



HBMIRT: A SAS macro for estimating uni- and multidimensional 1- and 2-parameter item response models in small (and large!) samples

Wolfgang Wagner¹ · Steffen Zitzmann¹ · Martin Hecht²

Accepted: 11 February 2024
© The Author(s) 2024

Abstract

Item response theory (IRT) has evolved as a standard psychometric approach in recent years, in particular for test construction based on dichotomous (i.e., true/false) items. Unfortunately, large samples are typically needed for item refinement in unidimensional models and even more so in the multidimensional case. However, Bayesian IRT approaches with hierarchical priors have recently been shown to be promising for estimating even complex models in small samples. Still, it may be challenging for applied researchers to set up such IRT models in general purpose or specialized statistical computer programs. Therefore, we developed a user-friendly tool – a SAS macro called HBMIRT – that allows to estimate uni- and multidimensional IRT models with dichotomous items. We explain the capabilities and features of the macro and demonstrate the particular advantages of the implemented hierarchical priors in rather small samples over weakly informative priors and traditional maximum likelihood estimation with the help of a simulation study. The macro can also be used with the online version of SAS OnDemand for Academics that is freely accessible for academic researchers.

Keywords Bayesian IRT · Multidimensional IRT · Hierarchical priors · Small sample · PROC MCMC

HBMIRT: A SAS macro for multidimensional item response models in small (and large!) samples

Psychometric assessment of categorical (in many cases dichotomous) test items is often based on item response theory (IRT), particularly in large scale studies such as the Programme for International Student Assessment (PISA; Organization for Economic Co-Operation and Development, 2016) or the Trends in International Mathematics and Science Study (TIMSS; Martin et al., 2020). IRT models can be considered as a special case of latent variable models with categorical indicators that load on one or more continuous latent variable(s) (Glockner-Rist & Hoijtink, 2003; Muthén, 2002). These models address a variety of different analysis goals regarding psychometric properties at the item- and test level such as the analysis of item discriminations,

within- and between-item multidimensionality (Adams et al., 1997), and test reliability (person separation reliability; Andrich, 1982). In addition, the models can address questions regarding individual persons parameter estimates such as their precision (i.e., standard errors or posterior standard deviations).

Despite the great potential of IRT analyses, in many cases, they cannot be applied to empirical data due to insufficient sample size. In fact, for a unidimensional two parameter logistic (2PL) model (i.e., difficulty and discrimination are estimated for each item), samples sizes of $N > 500$ are recommended, and even larger sample sizes for more complex (e.g., multidimensional) models (Liu & Yang, 2018).

Besides model complexity, the specific estimation method has been shown to play a major role for the required sample size (Garnier-Villarreal et al., 2021). Bayesian methods have been shown to be advantageous over frequentist methods in small samples when prior distributions are specified in an advantageous way (Garnier-Villarreal et al., 2021; König et al., 2020). However, the specification of such a prior distribution can be challenging: A prior that is advantageous in one case may not be so in another case. Often, so called uninformative (or diffuse, flat, vague) priors are specified when no information is a priori available about

✉ Wolfgang Wagner
wolfgang.wagner@uni-tuebingen.de

¹ Hector Research Institute of Education Sciences and Psychology, University of Tübingen, Europastraße 6, 72072 Tübingen, Germany

² Helmut Schmidt University Hamburg, Hamburg, Germany

the parameters to be estimated, which can lead to severe bias when samples are small (Smid et al., 2020; Zitzmann, Lüdtke, et al., 2021).

To mitigate this problem, the use of hierarchical prior distributions (also called adaptive informative priors) has specifically been suggested for IRT models when these models are used in small samples (Fujimoto & Neugebauer, 2020; Gilholm et al., 2021; König et al., 2020; Sheng, 2013). The idea behind this approach is that distributions for the parameters of a type of prior for model parameters (e.g., for a set of item discrimination parameters) are assumed. As a consequence, the prior distribution (e.g., for a specific item discrimination) is “adaptive” in such a way that it is adapted during the estimation process.

From this point of view, the question arises why such hierarchical Bayesian IRT models are not more routinely applied. One major reason for this might be that easy-to-use tools are not available in which users can specify such models without formulas as, for instance, in standard IRT tools (that do not allow for hierarchical Bayesian estimation) such as ConQuest (Wu et al., 2007), PROC IRT (SAS Institute Inc., 2018), the SPIRIT macro (DiTrapani et al., 2018) for SPSS (IBM Corp, 2019) or the many R packages (for an overview see Choi & Asilkalkan, 2019) such as the TAM package (Robitzsch et al., 2024) or the mirt package (Chalmers, 2012).

To provide users with such a tool, we developed a SAS macro based on PROC MCMC (SAS Institute Inc., 2018) that allows users to easily specify and estimate hierarchical Bayesian multidimensional IRT models (for user-specified IRT models with PROC MCMC see Ames & Samonte, 2015; Stone & Zhu, 2015): the HBMIRT¹ macro for dichotomous items, which supports hierarchical priors for item intercept and item slope (i.e., item discrimination or factor loading) parameters in logistic (logit link) and normal ogive (probit link) models. We choose SAS PROC MCMC as it shows fewer memory limitations compared to different R packages and is computationally very efficient (Ames & Samonte, 2015) due to multithreading (which is however not available in the online version of SAS OnDemand for Academics). In the following, we explain the capabilities and features of the macro, including an automated procedure for monitoring convergence. Moreover, we compare the performance of the implemented hierarchical priors with different constant hyperparameters and maximum likelihood estimation in a small simulation study with unidimensional two-parameter logistic (2PL) models.

The HBMIRT macro

In the following, we first give a short overview about the range of modeling options that are available within the

HBMIRT macro. We then explain how different models can be specified with the HBMIRT macro with concrete examples with illustrated listings and outputs. We begin with the specification of a standard unidimensional 2PL model and increase the complexity of the model and the applied (hierarchical) priors step by step and explain why such model extensions can be useful. In the subsequent section, we introduce the use of the remaining macro options, for instance, regarding the convergence criteria, the naming of output data sets, and the possibility of specifying priors with constant hyperparameters instead of hierarchical priors.

Modeling options

The HBMIRT macro allows users to specify a variety of uni- and multidimensional IRT models with binary outcomes. The general model and modeling options are shown in Fig. 1. It is essentially a multidimensional version of the 2PL model (M2PL; Reckase, 2009) – when the default logistic link function instead of the optional probit link function is used – with binary response y_{ij} for a person i on an item j . The responses y_{ij} are assumed to be a function of the person parameters θ_{if} for a person i on a factor (or dimension) f and the item parameters, namely the intercepts d_j and the discriminations or slopes a_{jf} (Chalmers, 2012). For both item intercept parameters and item slope parameters, normal prior distributions are specified. The parameters for at least one item per dimension are associated with a truncated normal prior $a_{jf} \sim N_+(\mu_a, \sigma_a^2)$, ensuring positive item slope parameters for identification purposes. The hyperparameters (μ_a and σ_a^2 or μ_d and σ_d^2 , respectively) of the prior distributions for the item parameters can be defined as prespecified constants (μ_{a^*} , $\sigma_{a^*}^2$, μ_{d^*} , $\sigma_{d^*}^2$) or – in the case of hierarchical priors – as parameters with associated hyperprior distributions ($\mu_{a(s)}$, $\sigma_{a(s)}^2$, μ_d , σ_d^2). If hierarchical priors are applied, the hyperparameters regarding the means of the prior distributions are uniformly distributed as $\mu_d \sim U(-6, 6)$ and $\mu_{a(s)} \sim U(-6, 6)$ or $\mu_{a(s)} \sim U(0, 6)$, respectively, and the hyperparameters regarding the variances are given inverse gamma distributions with shape and scale parameters both equal to 0.01: $\sigma_{a(s)}^2 \sim IG(0.1, 0.1)$ and $\sigma_d^2 \sim IG(0.1, 0.1)$ as default. Note that the hierarchical prior distributions including the hyperparameters can be changed by macro parameters. Further, in the case of the slope parameters, different sets (S) of hyperparameters with identical hierarchical prior distributions may be defined that are related to different sets of item slope parameters, for instance, a first set relating to slope parameters regarding the second dimension – $a_{j2} \sim N(\mu_{a(1)}, \sigma_{a(1)}^2)$ – and a second set relating to slope parameters regarding the first dimension – $a_{j1} \sim N(\mu_{a(2)}, \sigma_{a(2)}^2)$. It is also possible to use hierarchical priors only

¹ The %HBMIRT macro can be downloaded at: <https://doi.org/10.17605/OSF.IO/D9YBU>, accessed on 6 November 2023.

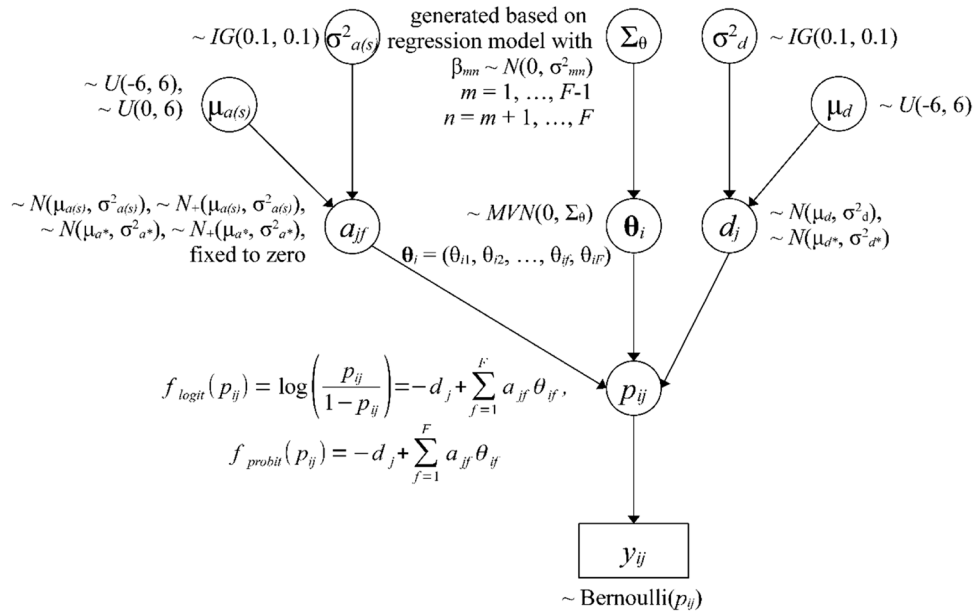


Fig. 1 A directed acyclic graph of the general model and options

for a subset of the item slope and intercept parameters and constant hyperparameters for the remaining priors – for instance, $d_j \sim N(\mu_{d^*}, \sigma^2_{d^*})$ for $j > 10$. In the case of (multidimensional) 1-parameter models, where all item slopes regarding a given dimension are assumed to be equal (i.e., a_{jf} reduces to a_f), constant hyperparameters $a_f \sim N_+(\mu_{a^*}, \sigma^2_{a^*})$ are used for the priors of the slope parameter(s). In the case of multidimensional models positive definite correlation matrices for the person parameters θ_{if} including the option to constrain selected correlations to zero are generated based on a regression approach (for details see Appendix A).

Specifying IRT models with the HBMIRT macro

Suppose we have assessed early numeracy (Dierendonck et al., 2021) with a standardized test in a sample consisting of 140 kindergarten children (the SAS listing to generate the data set and the listing for the analyses as well as the respective output are provided in Appendix B). The test encompasses three theoretical facets, each assessed by 10 items, namely counting, relations, and arithmetic. To illustrate the macro, we first estimate a unidimensional 2PL model (Fig. 2) with the hierarchical Bayesian approach (i.e., using hierarchical priors for the item parameters). Our data set *numeracy* in the SAS library *lib* comprises a unique numerical variable for each child (ID) named *idchild* and the variables *y1-y30* (counting *y1-y10*, relations *y11-y20*, and arithmetic *y21-y30*) containing the scored items (0 = false, 1 = correct).

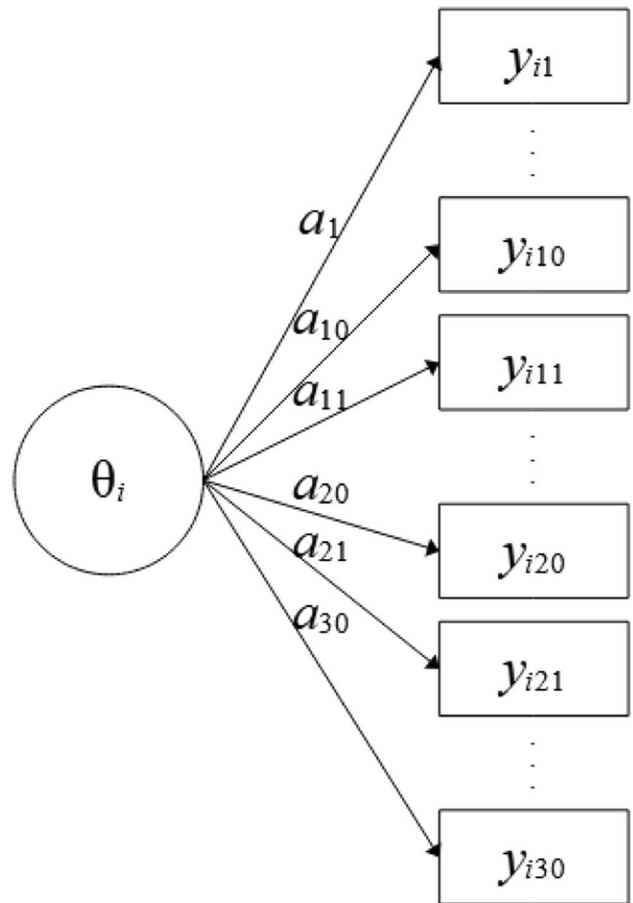


Fig. 2 Unidimensional 2PL model with 30 indicators. Note. Item slope parameters are denoted as a_1 - a_{30} . Item intercepts are not displayed.

Unidimensional 2PL model. To estimate our model, we use the following specification (Listing 1):

Listing 1
 “Standard” unidimensional 2PL model with hierarchical priors

```
* Load HBMIRT macro (saved in a folder called SAS-Macros on drive
c);

%INCLUDE "c:\SAS-Macros\HBMIRT-Macro.sas";

%HBMIRT(datset = lib.numeracy, id = idchild,

        factors = #1 y1 y2 y3 y4 y5 y6 y7 y8 y9 y10

                y11 y12 y13 y14 y15 y16 y17 y18 y19 y20

                y21 y22 y23 y24 y25 y26 y27 y28 y29 y30 [1]);
```

The 2PL model is the default choice. Therefore, what needs to be specified here are the name of the data set, the name of the ID variable, one factor (#1) with the respective items that load on that factor (y1-y30), and a label ([1]) that declares that the loadings (i.e., item slopes or a_j parameters with $j = 1, \dots, 30$) of the items a_j parameters share the same mean and variance hyperparameters. This way of modeling item slopes is consistent with the view that identical normal prior distributions would be specified in a non-hierarchical model. A similar assumption is made for the item intercepts (d_j parameters with $j = 1, \dots, 30$). It should be noted that

the model is parameterized as $p(y_j = 1) = \text{logistic}(-d_j + a_j \cdot \theta_j)$, meaning that higher intercept values indicate lower probabilities for correct answers for an item with a positive slope and a given person ability.

The results for this model are shown in Fig. 3. Each line – here denoted in SAS as *Obs* for “observation number” in the respective output data set – contains a parameter estimate. The name of the parameter can be found in the second column (Parameter) and the respective estimate and its posterior standard deviation in columns three (Estimate) and six (*StdDev*), respectively. The fourth column (*constr*) shows

Obs	Parameter	Estimate	constr	hprior	StdDev	Alpha	Credible Lower	Credible Upper	HPDLower	HPDUpper	PSR
1	mu1	1.0236			0.0979	0.05	0.84634	1.23438	0.83434	1.19590	1.02323
2	var1	0.0337			0.0278	0.05	0.00578	0.11989	0.00279	0.09313	1.05911
3	a_y1_dim1	0.9667	>	1	0.1646	0.05	0.62521	1.30693	0.59044	1.25061	1.00182
4	a_y2_dim1	0.9718		1	0.1652	0.05	0.60773	1.28561	0.59600	1.25742	1.00085
5	a_y3_dim1	0.9054		1	0.1571	0.05	0.58324	1.23106	0.61555	1.24917	1.00103
6	a_y4_dim1	0.9203		1	0.1586	0.05	0.62493	1.23546	0.60598	1.20184	1.00038
7	a_y5_dim1	0.8824		1	0.1619	0.05	0.52893	1.19045	0.58593	1.21884	1.00179
...											
31	a_y29_dim1	1.0723		1	0.1774	0.05	0.77275	1.44751	0.76721	1.41785	1.01154
32	a_y30_dim1	1.0543		1	0.1602	0.05	0.76810	1.40926	0.76257	1.38946	1.00338
33	mu2	0.2192			0.2082	0.05	-0.19671	0.65007	-0.21846	0.58778	1.00748
34	var2	1.1525			0.3378	0.05	0.64979	1.99215	0.58687	1.80416	1.00404
35	d_y1	-1.2577		y	0.2264	0.05	-1.72277	-0.82356	-1.74584	-0.85528	1.00888
36	d_y10	0.5757		y	0.1992	0.05	0.18773	0.93959	0.22264	0.97096	1.00988
37	d_y11	-0.6564		y	0.2193	0.05	-1.05835	-0.24194	-1.06193	-0.24571	1.00024
...											
59	d_y4	0.5445		y	0.1972	0.05	0.17691	0.93803	0.17311	0.92654	1.00216
60	d_y5	-1.5021		y	0.2348	0.05	-1.94185	-1.04346	-1.91802	-1.03901	1.00536
61	d_y6	0.2612		y	0.1959	0.05	-0.11388	0.66361	-0.10066	0.66361	1.01557
62	d_y7	1.5712		y	0.2277	0.05	1.13648	2.02675	1.13648	2.01999	1.00742
63	d_y8	0.2431		y	0.1983	0.05	-0.12801	0.65132	-0.15192	0.59978	1.01064
64	d_y9	0.8919		y	0.2107	0.05	0.50706	1.33006	0.50663	1.32328	1.00402

Fig. 3 Output for unidimensional 2PL model presented in Listing 1 (the five right-most columns and lines 36-64 are excluded)

the constraints applied to identify the model or to avoid label switching (see also below). Only one positivity constraint was applied to the slope parameter of item y_1 on dimension 1 (a_{y1_dim1}), which is the only assumed dimension here (therefore, all names of slope parameters have the suffix $dim1$). The slope parameters $a_{y1_dim1} \dots a_{y30_dim1}$ correspond to those denoted as a_1 - a_{30} in Fig. 2, where “ $dim1$ ” is denoted as θ . The fifth column (*hprior*) shows that hierarchical priors are used in the estimation. One set of hyperparameters (mean and variance) is used for all slope parameters and another set is used for all intercept parameters. The “ y ” in column *hprior* means that the item intercept (d_{y1}) belongs to the set of parameters with the same hierarchical prior (marked by “ y ” for “yes”, whereas unmarked intercepts would mean that they are not based on hierarchical priors), which are all intercept parameters, although they are not shown in Fig. 3. Columns eight and nine as well as columns 10 and 11 show credibility intervals (equal tail intervals and highest posterior density [HPD] intervals) at the specified alpha level (*alpha*, column seven, with default value .05). The right-most column in Fig. 3 (*PSR*) contains the potential scale reduction (PSR; Gelman & Rubin, 1992) for each parameter as described in Asparouhov and Muthén (2010) for the second half of the total chain (the first half of the chain is treated as a burn-in phase and always discarded for all calculations). If all PSR values fall below the cutoff (default $PSR_conv = 1.1$) then the column to the right of the PSR column (*converged*) – not shown in Fig. 3 – contains ones instead of zeros, indicating that the estimation has converged. If the expected sample sizes (ESS; Geyer, 1992; Kass et al., 1998) criterion is additionally used as a stop criterion

(default $ESS_conv = 0$ means that ESS is not computed), convergence depends on both criteria. It is also possible to switch off the PSR criterion ($PSR_conv=0$) and to use only the ESS criterion. Note that a large ESS can improve the accuracy of the estimates (Zitzmann & Hecht, 2019; see also Zitzmann, Weirich, et al., 2021a, 2021b). Recently, a SAS macro called *automcmc* (Wagner et al., 2023) has been introduced that can be used to apply the identical stopping criteria as those in HBMIRT to IRT models that require user-defined PROC MCMC code and are not yet covered by HBMIRT.

In the IRT literature, item difficulties are often reported. It is also possible to obtain these parameters (b parameters), which can, due to the model parametrization $p(y_j = 1) = \text{logistic}(-d_j + a_j \cdot \theta)$, be computed as $b_j = d_j / a_j$ (Stone & Zhu, 2015) in unidimensional models (for multidimensional models see Reckase, 2009) using the output data set containing the generated posterior samples (called *outpost*). Convergence regarding these parameter estimates can be checked by applying the SAS *ESS-autocall* macro (which is also used in the HBMIRT macro if ESS is specified to monitor convergence)².

Different sets of prior distributions. It might be reasonable to assume different hierarchical prior distributions (means, variances) for different item loadings; for example, depending on the specific facet these loadings belong to (counting y_1 - y_{10} , relations y_{11} - y_{20} , and arithmetic y_{21} - y_{30}). In this case, the model is specified as follows (Listing 2):

Listing 2

Unidimensional 2PL model with specific loading hierarchical priors for different sets of items

```
%HBMIRT(datset = lib.numeracy, id = idchild,
        factors = #1 y1 y2 y3 y4 y5 y6 y7 y8 y9 y10 [1]
                #1 y11 y12 y13 y14 y15 y16 y17 y18 y19 y20 [2]
                #1 y21 y22 y23 y24 y25 y26 y27 y28 y29 y30 [3]);
```

Here, three different means and three different variances (denoted as mua1 - mua3 and vara1 - vara3 , respectively, in the output shown in Fig. 4 lines 1-6) are estimated for three different sets of prior distributions (as shown in column 5, lines 7-36). This means that the hierarchical prior distributions for the loadings of each facet (denoted as a_1 - a_{10} , a_{11} - a_{20} and a_{21} - a_{30} , respectively, in Fig. 2) are allowed to have different means and variances (e.g., highest loadings on average for facet 1). Notice that it is still a unidimensional model because all item sets load on the same dimension (#1 for dimension 1).

Excluding items from estimation with hierarchical priors. It is also possible to exclude single items from the hierarchical specification. If, for instance, three items

² Note that the convergence and also the parameter estimates and credibility intervals from the HBMIRT macro are based on the second half of the chain, so the first half of generated samples in the *outpost* data set should be skipped in order to compare the results with those reported in the HBMIRT macro output. Advanced users may discard less than half of the samples after critical inspection of the chain to improve the estimation efficiency.

Obs	Parameter	Estimate	constr	hprior	StdDev	Alpha	Credible Lower	Credible Upper	HPDLower	HPDUpper	PSR
1	mu1	0.7980			0.1226	0.05	0.56441	1.02267	0.56674	1.02370	1.04686
2	var1	0.0326			0.0367	0.05	0.00435	0.14022	0.00367	0.10746	1.00034
3	mu2	1.2608			0.1391	0.05	1.00743	1.53544	0.99946	1.51338	1.00610
4	var2	0.0516			0.0660	0.05	0.00465	0.22385	0.00177	0.16611	1.00074
5	mu3	1.1743			0.1479	0.05	0.88026	1.47169	0.86721	1.43111	1.06624
6	var3	0.0369			0.0455	0.05	0.00473	0.14761	0.00252	0.10874	1.00206
7	a_y1_dim1	0.7929	>	1	0.1735	0.05	0.45489	1.14936	0.48760	1.16040	1.03041
8	a_y2_dim1	0.7950		1	0.1515	0.05	0.49720	1.09589	0.48688	1.07827	1.02792
9	a_y3_dim1	0.7355		1	0.1607	0.05	0.43521	1.04731	0.44372	1.04731	1.02381
10	a_y4_dim1	0.7672		1	0.1718	0.05	0.42255	1.10132	0.40047	1.05768	1.01925
11	a_y5_dim1	0.7324		1	0.1660	0.05	0.38079	1.04929	0.37718	1.02507	1.02875
...											
35	a_y29_dim1	1.2074		3	0.1968	0.05	0.85160	1.63960	0.85122	1.61952	1.05098
36	a_y30_dim1	1.1719		3	0.1941	0.05	0.80588	1.54304	0.80588	1.53363	1.05443
37	mud	0.2304			0.2084	0.05	-0.19179	0.63276	-0.19373	0.60923	1.03070
38	vard	1.2055			0.3719	0.05	0.67939	2.08791	0.59149	1.91338	1.00014
39	d_y1	-1.2053		y	0.2129	0.05	-1.62227	-0.79005	-1.59773	-0.78835	1.00119
40	d_y10	0.5437		y	0.2028	0.05	0.14482	0.92681	0.16865	0.93299	1.02702
41	d_y11	-0.6731		y	0.2244	0.05	-1.13348	-0.25243	-1.11562	-0.24931	1.01255
...											
63	d_y4	0.5166		y	0.1975	0.05	0.12522	0.88738	0.10548	0.86362	1.01671
64	d_y5	-1.4366		y	0.2143	0.05	-1.88566	-1.04217	-1.85371	-1.02621	1.00534
65	d_y6	0.2556		y	0.1809	0.05	-0.12584	0.62432	-0.12849	0.59955	1.00942
66	d_y7	1.5098		y	0.2320	0.05	1.06791	1.97003	1.02875	1.91992	1.02154
67	d_y8	0.2256		y	0.1831	0.05	-0.11194	0.58993	-0.09535	0.60288	1.01566
68	d_y9	0.8644		y	0.2123	0.05	0.45371	1.29377	0.42077	1.23809	1.01354

Fig. 4 Output for unidimensional 2PL model presented in Listing 2 (the five right-most columns and lines 41–68 are excluded)

(say y_{10} , y_{20} , and y_{30}) have been newly developed and, therefore, may have less desirable psychometric properties than the established items, these can be estimated with an individual (nonhierarchical) normal prior for each of these items (e.g., by default, $\text{prior_mean_a} = 0$, $\text{prior_var_a} = 4$) as shown in Listing 3. In the output, the

zeros in the *hprior* column would indicate that the respective item slopes do not fall under the umbrella of common hierarchical prior.

Listing 3

Exclusion of items from estimation with hierarchical priors

```
%HBMIRT(datset = lib.numeracy, id = idchild,
        factors = #1 y1 y2 y3 y4 y5 y6 y7 y8 y9 [1]
                #1 y11 y12 y13 y14 y15 y16 y17 y18 y19 [2]
                #1 y21 y22 y23 y24 y25 y26 y27 y28 y29 [3]
                #1 y10 y20 y30);
```

Regarding the intercepts, multiple sets of hierarchical priors are not allowed. However, as in the case of the loadings, single items can be excluded from the hierarchical prior by specifying the respective item names after the macro parameter *duninf* (e.g., $\text{duninf} = y_{10} y_{20} y_{30}$). The intercepts of these items are then estimated using the specified (un)informative normal prior (e.g., with the default values $\text{prior_mean_d} = 0$, $\text{prior_var_d} = 4$).

Hyperpriors. The default priors proposed by Stone and Zhu (2015) for the hyperparameters in the hierarchical

specification are uninformative with a uniform distribution ranging from -6 to 6 for the mean and an inverse gamma distribution with shape and scale parameters both equal to 0.01 for the variance. If the option $\text{muconstr} = \text{yes}$ is chosen, the mean is restricted to positive values. The priors for the hyperparameters can be modified by the macro parameters prior_mu and prior_mud for the means as well as prior_vara and prior_vard for the variances of the normal prior distributions of the item slope and intercept parameters. For instance, a more informative hyperprior (König et al.,

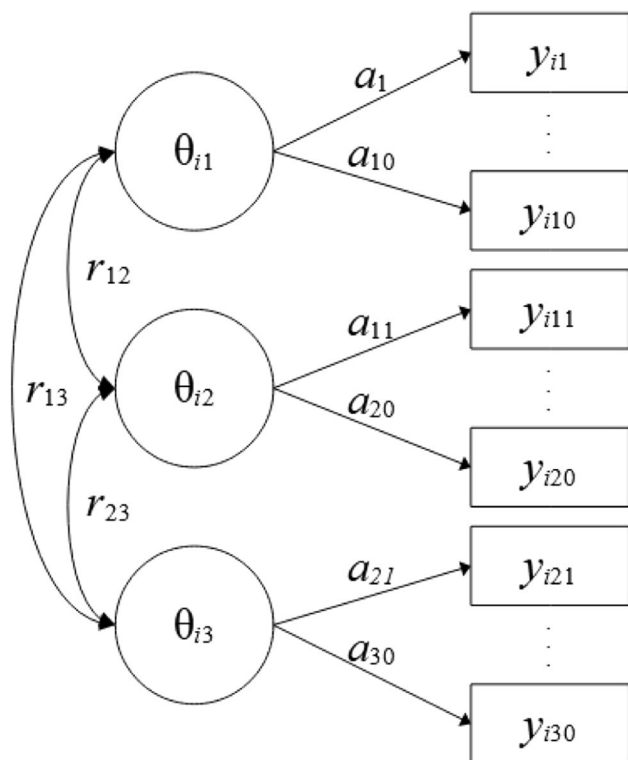


Fig. 5 Three-dimensional 2PL model with 30 indicators. Note. Item slope parameters are denoted as a_1 - a_{10} , a_{11} - a_{20} and a_{21} - a_{30} for dimensions 1 to 3 (denoted as θ_{i1} - θ_{i3}), respectively. Item intercepts are not displayed.

2022) for the variance of the slope parameter prior could be specified as `prior_vara = %STR(EXPON(ISCALE=0.4))` which would imply an exponential distribution with an inverse scale parameter equal to 0.4 or as a half-Cauchy distribution with location and scale parameters $\mu = 0$ and $\sigma = 2.5$ by specifying `prior_vara = %STR(CAUCHY(0, 2.5, lower=0))`. Note that the `%STR()` function is necessary to mask the parentheses enclosing the distribution parameter(s) (here “`iscale=0.4`”) during macro compilation. If at least one of the options `muaconstr = yes` or `aconstr = yes` (all slope parameters are constrained to be positive, see below) is used, the prior for the hyperparameter of the mean of the normal prior distributions for the item slope must exclude negative values. The default hyperprior here is specified as a uniform distribution ranging from 0 to 6 defined by the macro parameter `prior_mua_ge0=%STR(UNIFORM(0, 6))`.

Estimation without hierarchical priors. It is also possible to estimate a “traditional” Bayesian model with fixed prior means (as defined by `prior_mean_a` and `prior_mean_d`, respectively) and variances (as defined by `prior_var_a` and `prior_var_d`, respectively) for all a and d parameters by specifying the macro parameter `priors = user` instead of the default `priors = hierarchical`. It is important to note that the prior means and variances should be chosen with regard to

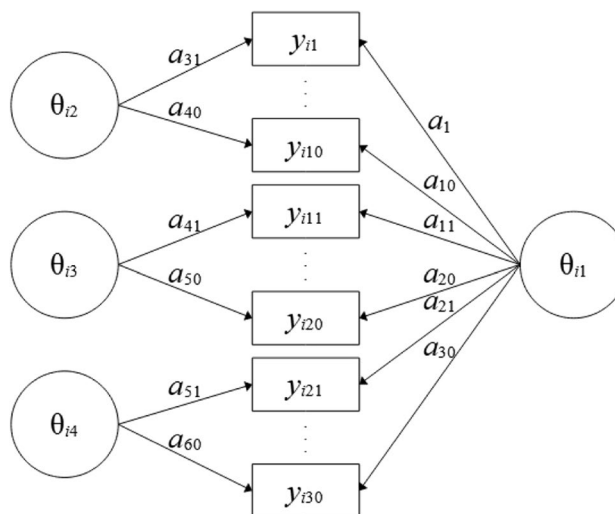


Fig. 6 Four-dimensional M2PL bifactor model with 30 indicators. Note. Item slope parameters are denoted as a_1 - a_{30} for the general dimension (θ_{i1}) and a_{31} - a_{40} , a_{41} - a_{50} and a_{51} - a_{60} for the specific dimensions 2 to 4 (denoted as θ_{i2} - θ_{i4}), respectively. Item intercepts are not displayed

the selected link function (link = logit or link = probit). The prior variance for a and d parameters with logit link refers to the logistic distribution with variance $\pi^2/3$, whereas the probit link refers to the normal distribution with unit variance. So, for example, if mean and variance for a parameters with a logit link are chosen as `prior_mean_a = 1` and `prior_var_a = 4`, the corresponding priors in a model with probit link should be approximately `prior_mean_a = 1 / (\pi^2/3)^{1/2} \approx 0.55` and `prior_var_a = 4 / (\pi^2/3) \approx 1.22`.

Model identification, label switching. To identify the model, by default (`aconstr = auto`), one loading for each dimension is constrained to be positive. In some cases (e.g., if this loading is close to zero or the model is quite complex) label switching can appear because, for instance, in a unidimensional model, the likelihood for a set of loadings and the same set of loadings multiplied by -1 is identical. To avoid such problems, individual loadings can be constrained to be positive by adding the “>” sign after the item (without a blank). For example, “`#1 y1 > y2 > y3 > y4`” means that y_1 - y_3 are constrained to have positive slope parameters, whereas this is not the case for y_4 . Alternatively, all loadings can be constrained to be positive by setting `aconstr = all`. The positivity constraint is realized by truncating the specific normal prior distribution(s) at zero (see also Gilholm et al., 2021). This can also be applied to the hyperparameters for the means of the slope parameters by setting `muaconstr = yes`.

Multidimensional models. A multidimensional 2PL model with the three facets represented as different (correlated) dimensions (Fig. 5) can be estimated as follows (Listing 4):

Listing 4*Three-dimensional model*

```
%HBMIRT(datset = lib.numeracy, id = idchild,
         factors = #1 y1 y2 y3 y4 y5 y6 y7 y8 y9 y10 [1]
                 #2 y11 y12 y13 y14 y15 y16 y17 y18 y19 y20 [1]
                 #3 y21 y22 y23 y24 y25 y26 y27 y28 y29 y30 [1]);
```

The factors are assumed to be intercorrelated by default (`covar = free`). If all correlations among factors should be constrained to zero, `covar = diagonal` can be specified. It is also possible to free correlations among factors, for example, by specifying `covar = 1#2 1#3`. Here, correlations between factors 1 and 2 (1#2) as well as between factors 1 and 3 (1#3) are estimated, whereas the correlation between factors 2 and 3 is fixed to zero (as 2#3 is not mentioned). If correlations among factors are estimated, the prior distributions of the correlations are given by default (`rdist = yes`). The prior distribution for the correlation matrix can be modified by choosing different values for `var_beta` (default: `var_beta = 1`) with smaller values implying distributions closer around zero.

In Listing 4, a global distribution of all item loadings is assumed. Factor-specific hierarchical prior distributions for the loadings can be specified by renaming [1] to [2] and [3] for the second and third factor (denoted as #2 and

#3, respectively) in Listing 4. This would be in line with the population model used to generate the data (with loadings on factors 1-3 sampled from normal distributions with means 1, 1.5, and 2, respectively).

Finally, a bifactor model (Fig. 6) with one general competence factor (with a specific hierarchical prior for the loadings) and three facet-specific factors (all factors are specified as uncorrelated by `covar = diagonal`) can be estimated. As each indicator is assumed to depend on two dimensions (i.e., loads on two factors) two slope parameters and one intercept parameter per indicator are estimated per indicator. Therefore, the probability of solving item 1, for instance, is modelled as $p(y_1 = 1) = \text{logistic}(-d_1 + a_1 \cdot \theta_{i1} + a_{31} \cdot \theta_{i2})$. Such models can be seen as multidimensional extensions of the 2PL (M2PL; Reckase, 2009) model. The specification of the respective bifactor model is shown in Listing 5.

Listing 5*Four-dimensional bifactor model*

```
%HBMIRT(datset = lib.numeracy, id = idchild,
         factors = #1 y1 y2 y3 y4 y5 y6 y7 y8 y9 y10
                 y11 y12 y13 y14 y15 y16 y17 y18 y19 y20
                 y21 y22 y23 y24 y25 y26 y27 y28 y29 y30 [1]
                 #2 y1 y2 y3 y4 y5 y6 y7 y8 y9 y10 [2]
                 #3 y11 y12 y13 y14 y15 y16 y17 y18 y19 y20 [2]
                 #4 y21 y22 y23 y24 y25 y26 y27 y28 y29 y30 [2],
         covar = diagonal);
```


Starting values. Starting values are given by default as $a_j = 1$ for slope parameters (loadings) and $d_j = 0$ for intercept parameters and $r = 0$ for correlations among factors that are not fixed to zero. It is, however, possible to customize the starting values, which can be helpful when factors correlate. Reasonable starting values for correlations can be assigned in squared brackets directly after the respective factor pair to accelerate the estimation process, for instance, `covar = 1#2[0.5] 1#3[0.4]` (in this case, the `svindat` option – see below – is skipped). The correlation matrix implied by the starting values (including assumed uncorrelated factors) has to be positive definite. The respective regression weights used to generate the multivariate normal distribution for the person parameters (see above) are estimated with PROC CALIS based on the specified correlations. Starting values for all parameter estimates can also be given by SAS data sets mentioned under `svindat` or `svlastitdat`. The `svlastitdat` option is particularly helpful if more iterations are needed to increase the precision of estimates (smaller potential scale reduction [PSR] or larger effective sample size [ESS]). In this case, the data set from a prior model estimation specified under `svlastitout` (`svlastitout = svlastitout` by default) containing all relevant parameter estimates from the last iteration are used as starting values for a next chain of iterations. The resulting iterations can be combined by stacking both `outpost` files (e.g., `outpost = outpost1` in first step, `outpost = outpost2` in second step) to one data set (e.g., `DATA outpost_combined; SET outpost1 outpost2;`). It is also possible to specify user-defined starting values in a specific SAS data set by the `svindat` option (e.g., `svindat = starting_values`). The `svindat` data set has to contain starting values for all parameters to be estimated (except the person parameters). A simple way to generate a data set with all necessary variables is to estimate a given model with only a few iterations and use the resulting `svoutdat` data set (`svoutdat = svoutdat` as default) after updating the starting values as intended. Whenever models with hierarchical priors are estimated (and not all starting values are given in a data set), starting values are generated by first automatically estimating a model with constants (defined under `prior_mean_a`, `prior_var_a`, `prior_mean_d`, and `prior_var_d`) as parameters for the prior distributions. Because these are only starting values that thus should not have an impact on the final results, the use of rather informative priors is recommended, in particular in small samples where uninformative priors may otherwise lead to extreme parameter estimates in some cases. Applying different sets of starting values can also be used to check convergence based on several chains. For instance, a fixed number of (burn-in) iterations (`nbi = 5E3`, `iterationsteps = 1E4`; for details see below) could be specified without applying stopping criteria (`PSR_conv = 0`, `ESS_conv =`

0), so that based on each set of starting values HBMIRT would generate 10,000 draws from the given chain. Note that different names for the `outpost` data sets (e.g., `outpost = chain1outpost`, `outpost = chain2outpost` etc.) must be specified. The convergence across the different chains can then be checked with the SAS GELMAN-autocall macro.

Output data sets. Besides the above-mentioned starting values-related data sets, the HBMIRT macro generates output data sets for posterior summaries and credible intervals that are printed in the SAS output window by default (`output = yes`). Further, a data set containing the posterior distributions of all (hyper)parameter estimates except the person parameters is available (`outpost = outpost`). The latter are stored in a data set at an aggregate level (`eap = eap`) as expected a posteriori (EAP) estimates and their posterior standard deviations (i.e., the means and the standard deviations of the posterior distributions) computed from the second half of the total chain. The estimated EAP reliability for each dimension is included in the output data set. If `ratioCPO` is set to a value larger than zero, an additional data set (`CPOdat = CPOdat`) is generated which contains item and test level information in terms of the natural logarithms of the conditional predictive ordinate (CPO). The calculation is done as described by Stone and Zhu (2015). This information can be used for model comparisons using a pseudo Bayes factor approach (Geisser & Eddy, 1979). It should be noted that this approach is a very reliable model selection approach for IRT models with hierarchical priors (Fujimoto & Neugebauer, 2020) and even more reliable than the deviance information criterion (DIC; Spiegelhalter et al., 2002), which is generated by default as $-2 \cdot M(\log \text{likelihood}) + 2 \cdot \text{Var}(\log \text{likelihood})$ from the second half of the chain³. Further, in their simulation study, Fujimoto and Falk (2024) found that CPO-based Log-Predicted Marginal Likelihoods (LPMLs) showed an acceptable performance in IRT model selection regarding dimensionality (unidimensional versus multidimensional models including bifactor and two-tier structures) that was superior to the DIC and comparable to the Watanabe–Akaike Information Criterion (WAIC; Watanabe, 2013), although being inferior to the Pareto-Smoothed Importance Sampling-Leave-One-Out Cross-Validation (PSIS-LOO; Vehtari et al., 2022) that was however also the most computationally demanding to calculate.

³ As the calculation of CPO is computational intensive and only values from the second half of the chain are used, it is reasonable to estimate a model in a first step, and then, use the resulting estimates from the last iteration (e.g. `svlastitout = svlastitout1`) as an input data set for a subsequent estimation with these estimates as starting values (`svlastitdat = svlastitout1`) and select, for instance, 10% (`ratioCPO = 0.1`) of the following second half of the `outpost` sample (the first half is always discarded for analyses – though available in the specified `outpost` data set) to compute the CPO.

Missing values. In empirical studies it is often the case that participants do not respond to every task or that several booklets were used with different subsets of the item pool (planned missingness). This means that the data set contains variables with missing values. As it may not be adequate to code missing values on items as incorrect (i.e., as zero) in the case of non-response (Pohl et al., 2014; Rose et al., 2016) – but see Robitzsch (2021) for arguments against treating non-response in terms of the latent ignorability assumption – and in the case of missingness by design, it is useful to rely on procedures that assume missingness at random (MAR; Rubin, 1976). This is the default in PROC MCMC (SAS Institute Inc., 2018), and the HBMIRT macro is designed to handle cases with this type of missingness.

Further macro parameters to control estimation and customize output

In addition to the automatic monitoring of convergence (by specifying the PSR and/or ESS as the convergence criterion), the maximum number of iterations (`maxnmc = 1E5 = 100,000` by default) after a number of burn-in iterations (`nbi = 5E3 = 5,000` by default) prior to the first block of iterations (see `iterationsteps` option below) can be specified. Also, thinning (i.e., using only every n^{th} iteration) can be specified (`thin = 1` by default, i.e., all iterations are used) in order to reduce the autocorrelation of the chain. However, thinning is only needed when there is not enough memory capacity to conduct the analysis (Link & Eaton, 2012). The check for convergence is applied after a specified number of iterations (`iterationsteps = 5E3 = 5,000` by default). Regarding the sampling algorithm, we relied on the PROC MCMC default which is a random walk Metropolis with normal proposal for all parameters in our case except for the variance of the d -parameters (conjugate sampling) when a hyperprior is applied. Proposal tuning should generally be applied (`maxtune = 100` loops – which is the maximum allowed number in PROC MCMC – for estimation with user-specified priors or `hmaxtune = 100` for estimation with hierarchical priors by default), particularly when multidimensional models are estimated. The maximum number of tuning iterations can also be specified (`ntu = 500` iterations – which is the maximum allowed number in PROC MCMC – for estimation with user-specified priors or `hntu = 500` for estimation with hierarchical priors by default). As the tuning step implemented in PROC MCMC can be time consuming, the number of iterations for the estimation of the model parameters (`iterationsteps`) for a given PROC MCMC run should not be chosen too small, because each “iteration step” starts with another tuning step. When a model needs many steps, it might be reasonable to abort the job and choose a larger number of iterations for each step. Note that oftentimes SAS has to be closed to stop PROC

MCMC (the “core” of the macro), because SAS does not respond to clicks on the break button. It is thus useful to start a new SAS instance for each job.

A simulation study

We tested the performance of the method applied by the HBMIRT macro in a small simulation study with a unidimensional 2PL model with three different sample sizes ($N = 50$, $N = 100$, and $N = 500$) and a common number of items ($k = 25$). Item and person parameters were randomly drawn from normal distributions: $a \sim N(1, 0.04)$, $d \sim N(0, 1)$, and $\theta \sim N(0, 1)$ for each data replicate. The distribution of the slopes in our study closely approximates the log-normal distribution with $\mu = 0$ and $\sigma^2 = 0.04$ (mean and variance: $E[a] = 1.02$, $\text{Var}[a] = 0.04$) used in a simulation study based on a 2PL model by Monroe (2021). It is also comparable to the log-normal distribution with $\mu = 0$ and $\sigma^2 = 0.06$ in König et al. (2020) regarding the mean ($E[a] = 1.03$) which, however, shows higher variance ($\text{Var}[a] = 0.07$). Zhang and Zhao (2019) applied a uniform distribution ranging from 0.7 to 1.5 to generate discrimination parameters in their simulation study, which implied a (slightly) higher mean and variance ($E[a] = 1.15$, $\text{Var}[a] = 0.05$) compared to our study. Item difficulties were based on normal distributions in all three simulation studies with $\mu = 0$ and $\sigma^2 = 1$ (König et al., 2020; Zhang & Zhao, 2019) or $\sigma^2 = 0.56$ (Monroe, 2021). The item difficulty distribution ($b = -d/a$) in our study based on uncorrelated item intercepts with $d \sim N(0, 1)$ and slopes $a \sim N(1, 0.04)$ has an identical mean ($\mu = 0$) but a (slightly) larger variance ($\sigma^2 = 1.15$).

The data sets were analyzed by a frequentist maximum likelihood approach (SAS PROC IRT with logistic link and option `RESFUNC = nominal` to get intercept estimates instead of difficulty estimates) and the HBMIRT macro with four different settings for the priors—uninformative: $a \sim N(1, 100)$, $d \sim N(0, 100)$; informative: $a \sim N(1, 4)$, $d \sim N(0, 4)$; hierarchical with hyperparameters with assigned hyperprior distributions ($\mu_a \sim U(-6, 6)$, $\sigma_a^2 \sim IG(0.01, 0.01)$, $\mu_d \sim U(-6, 6)$, $\sigma_d^2 \sim IG(0.01, 0.01)$; correct priors reflecting perfect prior knowledge of the population distributions: $a \sim N(1, 0.04)$, $d \sim N(0, 1)$ —and default settings for parameter constraints (one item with positivity constraint) and convergence (`PSR < 1.1`; `ESSconv = 0`, i.e., ESS criterion not applied). A total of 100 replicates were generated and then analyzed with each estimation approach and prior setting.

The results are presented in Table 1. With regard to the slope parameters, a rather large average bias ($\text{bias} \geq 0.215$) was observed for very small samples ($N = 50$) except for the hierarchical Bayesian approach ($\text{bias} = 0.050$, though still statistically significantly larger than zero, 95% CI [0.019, 0.079]) and, as expected, for the approach with correct priors

Table 1 Results from simulation study for maximum likelihood (ML) estimation and Bayesian estimation with uninformative priors, informative priors, hierarchical priors, and correct priors

Sample size	Estimation	Bias	M (SE^2 , posterior variance)	RMSE	Coverage (95% CI)	Length CI			
						M	Percentile		
							5	50	95
Item slope (a)									
$N = 50$	ML	0.215 [0.142, 0.307]	29.408 [0.522, 78.021]	2.048 [0.904, 3.006]	.966	2.886	1.362	1.885	3.980
	uninf.	0.968 [0.903, 1.031]	1.394 [1.284, 1.512]	1.730 [1.608, 1.859]	.906 (.846)	3.727 (3.893)	2.065 (2.095)	3.059 (3.148)	7.448 (8.180)
	inform.	0.439 [0.406, 0.470]	0.436 [0.430, 0.442]	0.790 [0.768, 0.811]	.937 (.911)	2.458 (2.526)	1.704 (1.736)	2.359 (2.411)	3.543 (3.681)
	hier.	0.050 [0.019, 0.079]	0.072 [0.067, 0.077]	0.249 [0.233, 0.265]	.948 (.947)	1.018 (1.051)	0.777 (0.796)	0.978 (1.006)	1.380 (1.426)
	correct	0.001 [-0.005, 0.008]	0.034 [0.033, 0.034]	0.182 [0.177, 0.186]	.949 (.947)	0.709 (0.719)	0.664 (0.673)	0.707 (0.717)	0.756 (0.768)
$N = 100$	ML	0.041 [0.021, 0.062]	0.140 [0.135, 0.147]	0.381 [0.365, 0.398]	.959	1.407	1.004	1.313	2.079
	uninf.	0.321 [0.293, 0.349]	0.265 [0.234, 0.314]	0.651 [0.597, 0.717]	.931 (.907)	1.765 (1.816)	1.202 (1.218)	1.606 (1.641)	2.732 (2.842)
	inform.	0.236 [0.213, 0.259]	0.179 [0.176, 0.182]	0.486 [0.466, 0.505]	.940 (.923)	1.583 (1.620)	1.146 (1.163)	1.514 (1.548)	2.243 (2.308)
	hier.	0.011 [-0.009, 0.031]	0.042 [0.039, 0.045]	0.199 [0.189, 0.211]	.936 (.941)	0.781 (0.803)	0.578 (0.589)	0.774 (0.790)	1.024 (1.053)
	correct	0.000 [-0.007, 0.007]	0.029 [0.029, 0.029]	0.168 [0.163, 0.172]	.949 (.952)	0.660 (0.670)	0.615 (0.623)	0.660 (0.670)	0.707 (0.718)
$N = 500$	ML	0.008 [0.000, 0.016]	0.023 [0.023, 0.024]	0.154 [0.148, 0.160]	.946	0.593	0.475	0.581	0.753
	uninf.	0.052 [0.043, 0.061]	0.025 [0.025, 0.025]	0.171 [0.164, 0.177]	.930 (.935)	0.598 (0.612)	0.468 (0.479)	0.586 (0.599)	0.774 (0.795)
	inform.	0.049 [0.041, 0.058]	0.025 [0.025, 0.025]	0.168 [0.162, 0.174]	.932 (.934)	0.595 (0.609)	0.467 (0.477)	0.580 (0.593)	0.766 (0.784)
	hier.	0.004 [-0.005, 0.012]	0.015 [0.015, 0.015]	0.128 [0.124, 0.131]	.922 (.930)	0.462 (0.476)	0.373 (0.384)	0.457 (0.470)	0.568 (0.585)
	correct	0.002 [-0.003, 0.008]	0.014 [0.014, 0.014]	0.121 [0.117, 0.125]	.933 (.944)	0.450 (0.462)	0.392 (0.401)	0.447 (0.459)	0.516 (0.596)
Item intercept (d)									
$N = 50$	ML	0.058 [-0.048, 0.196]	57.881 [0.321, 170.217]	2.945 [0.605, 4.676]	.969	2.548	1.178	1.520	3.065
	uninf.	-0.014 [-0.058, 0.031]	0.436 [0.391, 0.493]	0.726 [0.661, 0.797]	.965 (.949)	2.134 (2.190)	1.257 (1.266)	1.766 (1.791)	4.244 (4.483)
	inform.	0.021 [-0.007, 0.050]	0.185 [0.181, 0.190]	0.410 [0.395, 0.425]	.957 (.956)	1.624 (1.652)	1.197 (1.213)	1.533 (1.559)	2.381 (2.446)
	hier.	-0.005 [-0.035, 0.026]	0.133 [0.129, 0.136]	0.348 [0.335, 0.363]	.951 (.956)	1.391 (1.420)	1.178 (1.200)	1.360 (1.390)	1.709 (1.739)
	correct	0.022 [-0.002, 0.046]	0.115 [0.114, 0.116]	0.333 [0.323, 0.343]	.952 (.954)	1.309 (1.327)	1.165 (1.176)	1.285 (1.302)	1.547 (1.563)
$N = 100$	ML	-0.010 [-0.033, 0.012]	0.099 [0.090, 0.111]	0.315 [0.293, 0.343]	.960	1.147	0.859	1.051	1.727
	uninf.	-0.008 [-0.034, 0.017]	0.123 [0.109, 0.143]	0.382 [0.334, 0.444]	.954 (.947)	1.219 (1.244)	0.868 (0.879)	1.100 (1.115)	1.901 (1.950)
	inform.	0.003 [-0.016, 0.023]	0.089 [0.087, 0.092]	0.288 [0.277, 0.298]	.952 (.952)	1.125 (1.144)	0.854 (0.864)	1.064 (1.081)	1.613 (1.649)
	hier.	-0.003 [-0.023, 0.018]	0.068 [0.067, 0.069]	0.257 [0.248, 0.266]	.941 (.946)	0.995 (1.016)	0.854 (0.870)	0.967 (0.987)	1.221 (1.248)

Table 1 (continued)

Sample size	Estimation	Bias	M (SE^2 , posterior variance)	RMSE	Coverage (95% CI)	Length CI			
						M	Percentile		
							5	50	95
$N = 500$	correct	0.013 [-0.004, 0.030]	0.063 [0.062, 0.064]	0.249 [0.241, 0.257]	.946 (.951)	0.966 (0.980)	0.851 (0.862)	0.943 (0.957)	1.173 (1.189)
	ML	-0.002 [-0.012, 0.008]	0.016 [0.016, 0.017]	0.126 [0.121, 0.130]	.952	0.490	0.396	0.461	0.673
	uninf.	-0.004 [-0.014, 0.007]	0.016 [0.016, 0.017]	0.130 [0.124, 0.135]	.942 (.942)	0.478 (0.489)	0.375 (0.383)	0.452 (0.462)	0.664 (0.678)
	inform.	-0.004 [-0.015, 0.006]	0.016 [0.016, 0.017]	0.127 [0.122, 0.131]	.945 (.946)	0.476 (0.487)	0.373 (0.379)	0.452 (0.462)	0.654 (0.675)
	hier.	0.000 [-0.011, 0.010]	0.015 [0.014, 0.015]	0.122 [0.117, 0.127]	.940 (.944)	0.455 (0.468)	0.367 (0.377)	0.439 (0.453)	0.589 (0.608)
	correct	-0.001 [-0.011, 0.009]	0.014 [0.014, 0.014]	0.121 [0.117, 0.126]	.937 (.944)	0.449 (0.461)	0.372 (0.381)	0.434 (0.445)	0.582 (0.596)

In the conditions with samples sizes $N = 100$ and $N = 500$ all replications converged. In the condition with $N = 50$ one replicate was not estimable because of one item without variability. All other replications in this condition converged with Bayesian estimation and 94 replications converged with ML estimation. Coverage refers to 95% confidence intervals for ML estimation (ML estimate $\pm 1.96 \cdot SE$) and highest posterior density (HPD) or equal tail (reported in brackets) 95% credible intervals for Bayesian estimation. For bias, variance and RMSE 95% confidence limits are given in brackets based on 10,000 bootstrap samples of the average bias and squared error for each replicate (sampling with replacement across all replicates). Bias estimates with confidence limits that did not cover zero are printed in bold

Table 2 Linear associations of item slope bias and the size of the population parameter by sample size and estimation approach

	Model	Est.	SE	p	95% CI		R^2
					lower	upper	
$N = 50$	ML	0.156	0.256	.544	-0.346	0.657	.000
	uninf.	1.093	0.129	<.001	0.841	1.345	.023
	inform.	0.297	0.061	<.001	0.177	0.417	.008
	hier.	-0.695	0.022	<.001	-0.738	-0.652	.317
	correct	-0.842	0.007	<.001	-0.856	-0.827	.840
$N = 100$	ML	0.084	0.036	.023	0.013	0.155	.002
	uninf.	0.428	0.050	<.001	0.329	0.526	.022
	inform.	0.243	0.041	<.001	0.163	0.323	.013
	hier.	-0.640	0.025	<.001	-0.689	-0.591	.406
	correct	-0.726	0.009	<.001	-0.743	-0.708	.731
$N = 500$	ML	-0.015	0.016	.341	-0.047	0.016	.000
	uninf.	0.030	0.017	.081	-0.003	0.063	.001
	inform.	0.024	0.017	.153	-0.009	0.057	.001
	hier.	-0.357	0.018	<.001	-0.392	-0.321	.305
	correct	-0.369	0.011	<.001	-0.390	-0.348	.362

Statistically significant ($p < .05$) estimates are printed in bold. The regressions were based on cluster-robust regressions (PROC SURVEYREG) with replications as clusters

(both upper limits of the 95% CIs were below the lower limits of all other approaches in this condition). With $N = 100$, bias was negligible for the maximum likelihood (ML) approach and the Bayesian approaches with hierarchical and correct priors (bias ≤ 0.040 and overlapping 95% CIs) but large for the Bayesian approaches with uninformative and informative priors (bias ≥ 0.236 ; lower limits of the 95% CIs larger

than the respective upper limits of all other approaches). In the large sample condition ($N = 500$), bias was negligible for all estimation approaches (bias ≤ 0.052 ; but statistically significantly different from zero for the estimation with (un-)informative priors). The estimated variances of the parameter estimates (squared SE for ML, and posterior variance for Bayesian approaches) and the root mean squared errors

Table 3 Linear associations of item intercept bias and the size of the population parameter by sample size and estimation approach

	Model	Est.	SE	p	95% CI		R ²
					lower	upper	
N = 50	ML	0.381	0.168	.026	0.051	0.711	.017
	uninf.	0.275	0.020	<.001	0.235	0.314	.147
	inform.	0.061	0.008	<.001	0.046	0.077	.023
	hier.	-0.081	0.008	<.001	-0.097	-0.065	.055
	correct	-0.111	0.005	<.001	-0.122	-0.100	.115
N = 100	ML	0.051	0.008	<.001	0.034	0.067	.027
	uninf.	0.107	0.011	<.001	0.085	0.129	.081
	inform.	0.041	0.006	<.001	0.028	0.053	.021
	hier.	-0.045	0.006	<.001	-0.056	-0.033	.031
	correct	-0.062	0.005	<.001	-0.072	-0.053	.065
N = 500	ML	0.006	0.003	.050	0.000	0.012	.002
	uninf.	0.015	0.003	<.001	0.009	0.022	.015
	inform.	0.008	0.003	.006	0.003	0.014	.005
	hier.	-0.012	0.003	<.001	-0.017	-0.006	.010
	correct	-0.016	0.003	<.001	-0.021	-0.011	.018

All estimates were statistically significant ($p < .05$). The regressions were based on cluster-robust regressions (PROC SURVEYREG) with replications as clusters

Table 4 Coverage and reliabilities (estimated and true) of the expected a posteriori (EAP) estimates from the Bayesian estimation

Estimation	N = 50	N = 100	N = 500
Coverage (95 %)			
uninformative	0.767	0.879	0.935
informative	0.855	0.897	0.936
hierarchical	0.948	0.948	0.946
correct prior	0.950	0.950	0.947
Reliability (estimated)			
uninformative	0.433	0.613	0.775
informative	0.563	0.644	0.776
hierarchical	0.770	0.787	0.809
correct prior	0.810	0.800	0.811
Reliability (true)			
uninformative	0.772	0.794	0.813
informative	0.789	0.797	0.813
hierarchical	0.811	0.808	0.814
correct prior	0.811	0.810	0.815

Coverage refers to the relative amount of person parameters covered by the credible intervals defined as estimate $\pm 1.96 \cdot$ posterior SD . Estimated reliability was based on the variance of the EAP person parameter estimates. True reliability was computed as the squared correlation between the person parameters and the respective EAP estimates

(RMSE) were extremely large, in particular for ML in the $N = 50$ condition. A closer look at the results showed that this was partly due to a few very extreme ML estimates: The 99th percentile for the variances were 2.16 and 1.85 for the a and

Table 5 Average computation time by model prior specification and sample size

	Model (prior specification)			
	uninformative	informative	hierarchical	correct
N = 50	3 min 24 s	1 min 46 s	9 min 53 s	1 min 17 s
N = 100	2 min 16 s	2 min 03 s	9 min 37 s	2 min 32 s
N = 500	2 min 49 s	2 min 43 s	14 min 60 s	3 min 11 s

d parameters, respectively, which is far below the average variances of 29.41 and 57.88, respectively. Therefore, we additionally report the percentiles (5th, 50th, and 95th) for the length of the 95% confidence intervals (ML estimate $\pm 1.96 \cdot SE$) and credibility intervals (highest posterior density, HPD, and equal tail intervals). In all conditions the upper limits for the variances for both a and d parameters of the 95% CIs for the hierarchical and correct prior specification were below the respective lower limits of all other approaches. This was also the case regarding the accuracy of the estimation (RMSE) with the exception of the d parameters in the $N = 500$ condition. Regarding the credibility intervals, the results showed acceptable coverage rates for the HPD intervals which – as they are always smaller than the equal tail intervals (Congdon, 2006) – were preferable over the equal tail intervals here. Therefore, we refer only to the HPD intervals in the following. Although the coverage rate was mostly acceptable across the conditions and the estimation approaches (with the exception of the Bayesian approach with uninformative priors and $N = 50$), we found large differences regarding

the length of the intervals, which was on average markedly smaller for the hierarchical Bayesian approach compared with all other approaches with the exception of the correct prior specification and which is in line with the results for the variances. The same was true for the percentiles. This means that even in the case of $N = 500$, the hierarchical Bayesian approach outperformed ML estimation in this regard, with 3% compared to 31% larger average 95% CIs than those from the Bayesian approach with correct priors. Whereas in the $N = 50$ condition, the 95% CIs from the hierarchical Bayesian approach were 44% larger than those from the Bayesian approach with correct priors, in the $N = 100$ condition, they were only 18% larger than those from the Bayesian approach with correct priors.

Regarding the item intercepts, the results were overall very similar to those for the item slopes with two exceptions: (1) Only minor bias was observed across all conditions. (2) Although the hierarchical Bayesian approach showed the highest precision in terms of the smallest average length of the 95% CIs compared with the other estimation approaches (except the Bayesian approach with correct priors), this advantage was less pronounced than for the item slopes. Compared to the correct prior specification, the 95% CIs for the hierarchical Bayesian approach were only 6% larger on average across all sample sizes, whereas for ML estimation, this difference was 151%.

It should be noted that in Table 1 the term bias refers to average bias across replications for all items. Another important aspect is the dependence of bias on the size of the population parameter. It is a well-known fact that in Bayesian estimation with informative priors estimates are “pulled” towards the mean of the prior distribution (e.g., van de Schoot et al., 2017). In the case of a hierarchical Bayesian approach this effect is also expected as the variance hyperparameters of the priors will typically be rather small and thus quite informative. Therefore, we also investigated the linear association of bias and population parameters. The results for the bias of the item slope parameters are shown in Table 2. Regarding the association of bias and population parameters the results show statistically significant positive (ML—except for the $N = 50$ condition—, uninformative, informative prior) or negative (hierarchical and correct priors) linear associations for the $N = 50$ and the $N = 100$ condition. However, almost no statistically significant associations but for hierarchical and the correct priors were found in the $N = 500$ condition. The negative associations for the hierarchical and correct priors are in line with the assumption of a “shrinkage to the mean” of the prior distribution: In the $N = 100$ condition, for instance, applying the correct prior would be expected to lead to the bias $(\hat{a}_j - a_j) = 0.000 + (-0.726) \cdot (a_j - M(a_j))$ (the average bias was <0.001 as can be seen in Table 1). This means that the expected upward bias for a population

parameter one unit below the average would be 0.726, or, equivalently, the expected downward bias for a population parameter one unit above the average would be -0.726 .

With regard to the item intercepts (Table 3), the association between population parameter and bias was statistically significant for all approaches and all sample sizes with the same pattern as in the case of the item slopes (negative associations for the hierarchical and the correct priors, positive associations for all other approaches).

We also checked the coverage and (estimated) reliability of the EAP person parameter estimates from the Bayesian models (Table 4). As a reliability estimate (also computed by the HBMIRT macro by default), we used the variance of the EAP scores, which underestimates the true variance of the person parameters by $(1 - \text{reliability})$ percent (Mislavsky et al., 1992). The results show an excellent coverage for the CIs⁴ based on estimate $\pm 1.96 \cdot \text{posterior SD}$ from the Bayesian approaches with hierarchical and correct priors across all conditions, whereas for the Bayesian approaches with uninformative and informative priors, this was the case only in the $N = 500$ condition. A similar picture was found for the estimated reliabilities that were strongly underestimated (compared to the true reliabilities) when uninformative and informative priors were used, except for the $N = 500$ condition.

The simulation study was conducted using SAS 9.4 TS Level 1M6 on a Windows Version 1.0.19041 X64_10PRO platform notebook with an Intel Core i7-4600U CPU and 16 GB RAM. The average computation times for the estimation of the Bayesian models in the simulation study with the HBMIRT macro (that makes use of the multithreading capability of PROC MCMC) are given in Table 5. Further improvements regarding estimation time might be reached by specifying more appropriate starting values that should lead to faster convergence (i.e., less iterations on average). A very important aspect with regard to the computation time is a sufficient number of tuning loops for the proposal distributions (see, e.g., Hecht et al., 2021, who reported mixed results about the impact of the number of warmup iterations on the MCMC efficiency). On the one hand, a large number should lead to higher efficiency of the chain and, therefore, to

⁴ For the person parameters, only the means and standard deviations are exported by the HBMIRT macro to avoid memory limitations in cases with larger sample sizes (e.g. 1,000 persons). Here, smaller numbers for the iterationsteps option can be chosen (e.g., iterationsteps = 1E3), which means that for each “step”, the posterior distribution for all person parameters contains $1,000 \cdot 1,000 = 10^6$ estimates. After each step, for each person, the means and variances of the respective estimates are calculated for the two chain parts (first and second half of the chain) before the posterior distribution of the person parameters is deleted to save memory. Therefore, it is not possible to compute equal tail or HPD intervals for the person parameters based on the output of the HBMIRT macro.

a lower number of iterations needed to achieve a given ESS, for instance. On the other hand, the proposal tuning process might need a lot of computational resources. We are hesitant to give a general advice regarding the optimal settings for the proposal tuning. Based on a few experiments we skipped the tuning phase for non-hierarchical models ($\text{maxtune} = 0$) in our simulation study, but used proposal tuning for the hierarchical approach ($\text{hmaxtune} = 100$). If proposal tuning is needed, the number of iterations before the next check of the stopping criteria should not be chosen too small (e.g., $\text{iterationsteps} = 2500$), because the proposal tuning process starts again after each step. But if the proposal tuning phase can be skipped, (much) shorter “iteration steps” (e.g., $\text{iterationsteps} = 500$) can be chosen that may lead to a smaller number of total iterations given the stopping criteria. For instance, the first 10 replications of the model with the correct prior specification in our simulation study in the $N = 500$ condition with the applied setting ($\text{iterationsteps} = 2500$) all fulfilled the stopping criterion ($\text{PSRconv} = 1.1$) after the first “step” (average computation time: 3 min 3 s). With a smaller number of “iteration steps” ($\text{iterationsteps} = 500$), on average, the stopping criterion was fulfilled after 1,200 iterations (average computation time: 2 min 9 s). Another suggestion for reducing computational time in Bayesian estimation based on model reformulations was proposed by Hecht et al. (2020; see also Hecht & Zitzmann, 2020) and Merkle et al. (2021).

Discussion

During the last decades IRT has become the standard psychometric approach for scaling tests, in particular when dichotomously coded items (responses coded as correct or false) are used. The estimation of such models, however, typically requires rather large sample sizes which makes it difficult for applied researchers in many fields to make use of IRT. This drawback can be overcome by Bayesian IRT approaches with hierarchical priors that allow to estimate (multidimensional) IRT models in rather small samples as recent studies have demonstrated (Fujimoto & Neugebauer, 2020; Gilholm et al., 2021; König et al., 2020; Sheng, 2013). To date, such approaches might be under-used by applied researchers for two reasons: First, researchers may not be aware of the advantages of the Bayesian IRT framework with hierarchical priors. Second, it might be quite difficult for non-experts to set up such IRT models in general purpose (e.g. SAS; SAS Institute Inc., 2018) or specialized (e.g. Stan; Carpenter et al., 2017) statistical computer programs. For these reasons, we developed the HBMIRT macro for SAS with the central aim of user-friendliness. We tried to keep the model specification as simple as possible (comparable to other existing IRT tools such as SAS PROC IRT)—for instance, by adding many default settings—but still allowing

for setting up quite complex multidimensional models. Further, we added an automated convergence control by applying a stop criterion analog to that in Mplus as default (which can easily be “switched off” or modified by the user). Finally, we gauged the macro performance (convergence, parameter recovery) in a simulation study.

To evaluate the method employed by the HBMIRT macro, we simulated data according to unidimensional 2PL models each with 25 items and different sample sizes ($N = 50$, $N = 100$, and $N = 500$). For each condition 100 data sets were generated and item parameters as well as person parameters were estimated based on Bayesian IRT models with the HBMIRT macro (uninformative, informative, hierarchical, and correct priors—the latter exactly matched the distributions from which the item parameters were drawn) as well as an ML-IRT model (SAS PROC IRT). The results showed that the convergence criterion was reached in virtually all cases and that the coverage rates for the item parameters were mostly acceptable for all estimation approaches (i.e., the 95% CIs included the respective population parameters in approximately 95% of the cases). Slope parameter estimates from the Bayesian approaches with (un-)informative priors were biased, particularly in the $N = 50$ condition, whereas estimates based on hierarchical and correct priors were (largely) unbiased across all conditions. Moreover, regarding the precision of the slope parameter estimates in terms of the length of the 95% CIs, the results showed a clear advantage of the hierarchical approach over all other approaches—except, of course, the correct prior specification. Interestingly, this was even the case in the $N = 500$ condition, where the hierarchical Bayesian approach outperformed ML estimation with 3% compared to 31% larger average 95% CIs for the slope parameter estimates than those from the Bayesian approach with correct priors. This means that even in this condition, the prior still had a non-negligible impact on the posterior distribution (see Table 2) of the slope parameter estimates and a higher accuracy in terms of the RMSE for the hierarchical Bayesian compared to all other approaches—except the correct prior specification—by “borrowing” information from other slope parameter estimates in the model. The results for the item intercepts showed a comparable but less pronounced pattern as in the case of the slope parameters for the different estimation approaches with the exception that bias was generally very small. Further, with regard to the EAP person parameter estimates from the Bayesian approaches, we found almost perfect coverages (95% CIs) and unbiased reliability estimates only for the estimation based on hierarchical priors and the correct priors across all conditions. The reliability estimates may be biased in both uninformative and informative prior approaches when these estimates are compared to their true values (determined by the squared correlations of EAP estimates with population parameters). This could result from

a positive bias in slope parameters, which is “compensated” by a reduced variance of the EAP estimates, our chosen reliability index. Taken together, the main findings of our simulation study regarding the hierarchical Bayesian approach are in line with those from prior studies, which also found unbiased item parameter estimates even in small(er) samples (Fujimoto & Neugebauer, 2020; Sheng, 2013) and, additionally, highly accurate person parameter estimates (König et al., 2020, 2022) for hierarchical Bayesian IRT approaches.

Conclusion

In particular with small and medium sample sizes and/or more complex models, less biased and more accurate parameter estimates in terms of a smaller RMSE can be expected with the Bayesian IRT approach with hierarchical priors compared to (un-)informative priors or ML estimation. With the HBMIRT macro for SAS the benefits of this approach are no longer restricted to experts with a strong background in Bayesian modelling. Uni- and multidimensional Bayesian IRT models with hierarchical priors for dichotomous items can easily be specified and estimated with automatic control of convergence by a default stop criterion. For more advanced users, the macro defaults can be modified, for instance, to estimate models with probit-link instead of the default logit-link, to alter the stop criterion (e.g., ESS as an alternative or additional criterion) or the hierarchical prior distributions, and to apply positivity constraints to specific item slope parameters or zero constraints on specific intercorrelations of latent dimensions (factors).

Appendix A

Generation of positive definite (constrained) correlation matrices

The generation of positive definite correlation matrices for the person parameters θ_{ij} including the option to constrain selected correlations to zero is based on sampling (and constraining) regression coefficients assuming that a set of latent composite scores (e.g. C_1 – C_4 in Fig. 7) is a weighted aggregate of an uncorrelated set of component variables with unit variance ($F = 4$ dimensions: x_1 – x_4 in Fig. 7). The latent composite C_f is a weighted aggregate of x_f, x_{f+1}, \dots, x_F . The regression weights are fixed to 1 for all β_{ff} and generated by normal distributions with zero means for the remaining weights. The variance $\text{var}(\beta_{F-1, F})$ of the normal prior for the regression weight $\beta_{F-1, F}$

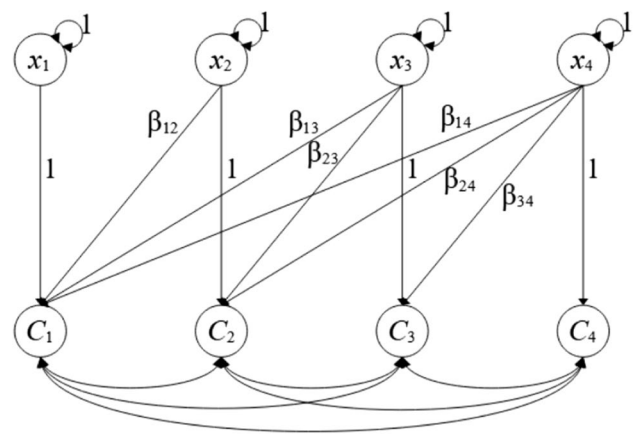


Figure 7 Model with latent composite scores (C_1 – C_4) and component variables (x_1 – x_4) for the generation of factor intercorrelations (example with four dimensions)

of the last component variable (x_F) on the second last composite score (C_{F-1}) is fixed to 1 by default. Therefore, the expected average variance of C_{F-1} (across several draws) is given by $\text{var}(C_{F-1}) = 1 + \text{var}(\beta_{F-1, F}) = 2$ (the variance of the product of two normally distributed variables with mean zero, here the component variable and the regression weight, is equal to the product of both variances, see Goodman, 1960), whereas the expected average variance of the last composite score, C_F , equals 1. To adjust the variance of the normal priors for the regression weights β_{mn} for $m < F-1, n = m + 2, m + 3, \dots, F$ to the larger expected average variances of the composite scores with more “predictors”, $\text{var}(\beta_{F-1, F})$ is multiplied by the ratio of $\text{var}(C_{m+1})$ and $\text{var}(C_n)$. In the example with four factors in Fig. 7 the variance of the prior for β_{24} is automatically fixed to $\text{var}(\beta_{24}) = \text{var}(\beta_{F-1, F}) \cdot \text{var}(C_{m+1})/\text{var}(C_n) = \text{var}(\beta_{34}) \cdot \text{var}(C_3)/\text{var}(C_4) = 1 \cdot 2/1 = 2$ – assuming that θ_{i3} and θ_{i4} are not specified as uncorrelated (otherwise the $\text{var}(\theta_3) = 1$ as β_{34} is fixed to zero). Correlations fixed to zero are realized by a constraint on the respective regression weight between the pair of composite scores to a value that neutralizes all impacts from other “predictors”. For instance, the covariance of C_2 and C_3 is given by $\text{cov}(C_2, C_3) = \text{var}(\beta_{24}) \cdot \text{var}(\beta_{34}) + \text{var}(\beta_{23}) \cdot 1$. If this covariance (and the corresponding correlation) is fixed to zero, the respective regression coefficient is defined as $\beta_{23} = -1 \cdot \beta_{24} \cdot \beta_{34}$ with $\text{var}(\beta_{23}) = \text{var}(\beta_{24}) \cdot \text{var}(\beta_{34})$. Finally, the correlations between the composite scores are computed as $r_{mn} = \text{cov}(C_m, C_n)/(\text{var}(C_m) \cdot \text{var}(C_n))^{0.5}$ and used to generate a multidimensional normal distribution with zero means and unit variances for the person parameters θ_i .

Appendix B

Analysis Example (SAS code and output)

The following SAS job was used to generate the data for the illustrative example and store the data set in the folder “c:\HBMIRT_example”:

```
LIBNAME lib "c:\HBMIRT_example\";

* Generate item parameters (a_diff as deviation from factor-specific average
  slope);
* Variances: 0.04 for a-parameters, 1.0 for d-parameters;
DATA itempar;
  DO k=1 TO 30;
    a_diff=SQRT(0.04)*NORMAL(123);
    d=NORMAL(234);
    OUTPUT;
  END;
RUN;
DATA itempar2; SET itempar(KEEP=k a_diff d);
  FORMAT label_a_diff $8. label_d $5.;
  label_a_diff="a_diff"||LEFT(k); label_d="d"||LEFT(k);
PROC TRANSPOSE DATA=itempar2 OUT=itempar_a_diff(DROP=_NAME_); VAR a_diff; ID label_a_diff;
PROC TRANSPOSE DATA=itempar2 OUT=itempar_d(DROP=_NAME_); VAR d; ID label_d;
RUN;

* Generate true scores for factors (thetas);
DATA test;
  DO idchild=1 TO 140;
    * r(theta1,theta2)=.8, r(theta2,theta3)=.5, r(theta1,theta3)=.4;
    theta1=NORMAL(1);
    theta2=.8*theta1+SQRT(1-.8**2)*NORMAL(1);
    theta3=.5*theta2+SQRT(1-.5**2)*NORMAL(1);
    OUTPUT;
  END;
RUN;
DATA test; SET test;
  IF _N_=1 THEN SET itempar_a_diff;
  IF _N_=1 THEN SET itempar_d;
RUN;

* Generate items (3-dimensional 2PL model);
DATA test; SET test;
  ARRAY a_diff(30) a_diff1-a_diff30;
  ARRAY d(30) d1-d30;
  ARRAY y(30) y1-y30;
  ARRAY theta(3) theta1-theta3;

  DO i=1 TO 3;
    DO j=1 TO 10;
      y((i-1)*10+j)=(d((i-1)*10+j)+(1+(i-1)/2+a_diff((i-1)*10+j))*
        theta(i)+QUANTILE("logistic", RANUNI(1)))>0;
      * Average population parameters for slope: M=1, 1.5, 2 for factors 1-3;
    END;
  END;
RUN;

DATA lib.numeracy; SET test(KEEP=idchild y1-y30);
RUN;
```

The following SAS job was used to analyze the data of the illustrative example (assuming that the data set was

stored in the folder “c:\HBMIRT_example” and the macro HBMIRT-Macro.sas in the folder “c:\SAS-Macros”):

```
LIBNAME lib "c:\HBMIRT_example\";

%INCLUDE "c:\SAS-Macros\HBMIRT-Macro.sas";
OPTIONS PAGESIZE=200;

* Listing 1;
%HBMIRT(datset = lib.numeracy, id = idchild,
  factors = #1 y1 y2 y3 y4 y5 y6 y7 y8 y9 y10 y11 y12 y13 y14 y15 y16 y17 y18 y19 y20 y21 y22
           y23 y24 y25 y26 y27 y28 y29 y30 [1]);

* Listing 2;
%HBMIRT(datset = lib.numeracy, id = idchild,
  factors = #1 y1 y2 y3 y4 y5 y6 y7 y8 y9 y10 [1]
           #1 y11 y12 y13 y14 y15 y16 y17 y18 y19 y20 [2]
           #1 y21 y22 y23 y24 y25 y26 y27 y28 y29 y30 [3]);

* Listing 3;
%HBMIRT(datset = lib.numeracy, id = idchild,
  factors = #1 y1 y2 y3 y4 y5 y6 y7 y8 y9 [1]
           #1 y11 y12 y13 y14 y15 y16 y17 y18 y19 [2]
           #1 y21 y22 y23 y24 y25 y26 y27 y28 y29 [3]
           #1 y10 y20 y30);

* Listing 4;
%HBMIRT(datset = lib.numeracy, id = idchild,
  factors = #1 y1 y2 y3 y4 y5 y6 y7 y8 y9 y10 [1]
           #2 y11 y12 y13 y14 y15 y16 y17 y18 y19 y20 [1]
           #3 y21 y22 y23 y24 y25 y26 y27 y28 y29 y30 [1]);

* Listing 4b: Same as Listing 4, but with factor-specific hyperparameters for the item
  slopes (as in population model);
%HBMIRT(datset = lib.numeracy, id = idchild,
  factors = #1 y1 y2 y3 y4 y5 y6 y7 y8 y9 y10 [1]
           #2 y11 y12 y13 y14 y15 y16 y17 y18 y19 y20 [2]
           #3 y21 y22 y23 y24 y25 y26 y27 y28 y29 y30 [3]);

* Listing 5;
%HBMIRT(datset = lib.numeracy, id = idchild,
  factors = #1 y1 y2 y3 y4 y5 y6 y7 y8 y9 y10 y11 y12 y13 y14 y15 y16 y17 y18 y19 y20 y21 y22
           y23 y24 y25 y26 y27 y28 y29 y30 [1]
           #2 y1 y2 y3 y4 y5 y6 y7 y8 y9 y10 [2]
           #3 y11 y12 y13 y14 y15 y16 y17 y18 y19 y20 [2]
           #4 y21 y22 y23 y24 y25 y26 y27 y28 y29 y30 [2],
  covar = diagonal);
```


The resulting outputs are presented in the following. Please note that information related to the estimated model – convergence status (1 = converged), time needed for estimation, EAP reliability, and DIC – instead of single

parameters are repeated across lines. Lines are denoted as “Obs” in the output of the results data set (default: postsumint=postsumint) based on PROC PRINT. Output for Listing 1

Obs	Parameter	Estimate	constr	hprior	StdDev	Alpha	Credible Lower	Credible Upper	HPDLower	HPDUpper	PSR	converged	iterations	time	rel_eap_dim1	DIC
1	mual	1.0236			0.0979	0.05	0.84634	1.23438	0.83434	1.19590	1.02323	1	5000	0:17:45	0.86423	4670.45
2	varal	0.0337			0.0278	0.05	0.00578	0.11989	0.00279	0.09313	1.05911	1	5000	0:17:45	0.86423	4670.45
3	a_y1_dim1	0.9667	>	1	0.1646	0.05	0.62521	1.30693	0.59044	1.25061	1.00182	1	5000	0:17:45	0.86423	4670.45
4	a_y2_dim1	0.9718		1	0.1652	0.05	0.60773	1.28561	0.59600	1.25742	1.00085	1	5000	0:17:45	0.86423	4670.45
5	a_y3_dim1	0.9054		1	0.1571	0.05	0.58324	1.23106	0.61555	1.24917	1.00103	1	5000	0:17:45	0.86423	4670.45
6	a_y4_dim1	0.9203		1	0.1586	0.05	0.62493	1.23546	0.60598	1.20184	1.00038	1	5000	0:17:45	0.86423	4670.45
7	a_y5_dim1	0.8824		1	0.1619	0.05	0.52893	1.19045	0.58593	1.21884	1.00179	1	5000	0:17:45	0.86423	4670.45
8	a_y6_dim1	0.9302		1	0.1658	0.05	0.61377	1.27222	0.61282	1.25657	1.00033	1	5000	0:17:45	0.86423	4670.45
9	a_y7_dim1	0.9893		1	0.1678	0.05	0.66642	1.34703	0.65162	1.32407	1.00283	1	5000	0:17:45	0.86423	4670.45
10	a_y8_dim1	1.0523		1	0.1650	0.05	0.74967	1.42735	0.71155	1.36956	1.03740	1	5000	0:17:45	0.86423	4670.45
11	a_y9_dim1	1.1011		1	0.1747	0.05	0.79897	1.48343	0.78964	1.44580	1.01121	1	5000	0:17:45	0.86423	4670.45
12	a_y10_dim1	0.9508		1	0.1614	0.05	0.64248	1.25879	0.64588	1.25879	1.00587	1	5000	0:17:45	0.86423	4670.45
13	a_y11_dim1	1.1722		1	0.1973	0.05	0.82728	1.61463	0.82142	1.53841	1.04931	1	5000	0:17:45	0.86423	4670.45
14	a_y12_dim1	0.9983		1	0.1646	0.05	0.67264	1.34128	0.63641	1.30378	1.00279	1	5000	0:17:45	0.86423	4670.45
15	a_y13_dim1	1.0010		1	0.1570	0.05	0.70724	1.35130	0.74109	1.37720	1.02011	1	5000	0:17:45	0.86423	4670.45
16	a_y14_dim1	1.0471		1	0.1746	0.05	0.72283	1.40411	0.71001	1.37415	1.01811	1	5000	0:17:45	0.86423	4670.45
17	a_y15_dim1	1.0949		1	0.1888	0.05	0.75452	1.49549	0.75316	1.48710	1.01033	1	5000	0:17:45	0.86423	4670.45
18	a_y16_dim1	1.0969		1	0.1759	0.05	0.77409	1.50738	0.75432	1.43881	1.02028	1	5000	0:17:45	0.86423	4670.45
19	a_y17_dim1	1.0643		1	0.1779	0.05	0.76245	1.46340	0.74604	1.39901	1.01180	1	5000	0:17:45	0.86423	4670.45
20	a_y18_dim1	1.2105		1	0.2210	0.05	0.87065	1.73946	0.81927	1.62316	1.05226	1	5000	0:17:45	0.86423	4670.45
21	a_y19_dim1	1.1244		1	0.1981	0.05	0.82881	1.62630	0.79190	1.56430	1.02632	1	5000	0:17:45	0.86423	4670.45
22	a_y20_dim1	0.9608		1	0.1643	0.05	0.64648	1.27834	0.63791	1.25544	1.00044	1	5000	0:17:45	0.86423	4670.45
23	a_y21_dim1	1.0681		1	0.1767	0.05	0.74717	1.43012	0.73930	1.41941	1.01122	1	5000	0:17:45	0.86423	4670.45
24	a_y22_dim1	0.9819		1	0.1573	0.05	0.64997	1.30818	0.70305	1.33306	1.00058	1	5000	0:17:45	0.86423	4670.45
25	a_y23_dim1	1.0808		1	0.1848	0.05	0.76111	1.48897	0.75958	1.46606	1.00002	1	5000	0:17:45	0.86423	4670.45
26	a_y24_dim1	1.0582		1	0.1731	0.05	0.73098	1.43610	0.72369	1.40260	1.00422	1	5000	0:17:45	0.86423	4670.45
27	a_y25_dim1	1.0259		1	0.1714	0.05	0.71450	1.38497	0.70141	1.35857	1.00925	1	5000	0:17:45	0.86423	4670.45
28	a_y26_dim1	1.0712		1	0.1665	0.05	0.78870	1.43318	0.78343	1.41349	1.00883	1	5000	0:17:45	0.86423	4670.45
29	a_y27_dim1	0.9030		1	0.1497	0.05	0.60214	1.19542	0.58603	1.17149	1.00124	1	5000	0:17:45	0.86423	4670.45
30	a_y28_dim1	1.0595		1	0.1891	0.05	0.73327	1.51215	0.69502	1.46061	1.00860	1	5000	0:17:45	0.86423	4670.45
31	a_y29_dim1	1.0723		1	0.1774	0.05	0.77275	1.44751	0.76721	1.41785	1.01154	1	5000	0:17:45	0.86423	4670.45
32	a_y30_dim1	1.0543		1	0.1602	0.05	0.76810	1.40926	0.76257	1.38946	1.00338	1	5000	0:17:45	0.86423	4670.45
33	mud	0.2192			0.2082	0.05	-0.19671	0.65007	-0.21846	0.58778	1.00748	1	5000	0:17:45	0.86423	4670.45
34	vard	1.1525			0.3378	0.05	0.64979	1.99215	0.58687	1.80416	1.00404	1	5000	0:17:45	0.86423	4670.45
35	d_y1	-1.2577	y		0.2264	0.05	-1.72277	-0.82356	-1.74584	-0.85528	1.00888	1	5000	0:17:45	0.86423	4670.45
36	d_y10	0.5757	y		0.1992	0.05	0.18773	0.93959	0.22264	0.97096	1.00988	1	5000	0:17:45	0.86423	4670.45
37	d_y11	-0.6564	y		0.2193	0.05	-1.05835	-0.24194	-1.06193	-0.24571	1.00024	1	5000	0:17:45	0.86423	4670.45
38	d_y12	0.4601	y		0.1826	0.05	0.12647	0.83975	0.11502	0.82755	1.00151	1	5000	0:17:45	0.86423	4670.45
39	d_y13	-0.5495	y		0.2122	0.05	-0.98381	-0.13661	-0.91239	-0.09959	1.00828	1	5000	0:17:45	0.86423	4670.45
40	d_y14	0.6580	y		0.1935	0.05	0.29354	1.04849	0.30338	1.04932	1.00000	1	5000	0:17:45	0.86423	4670.45
41	d_y15	-2.0807	y		0.2783	0.05	-2.67454	-1.59381	-2.62914	-1.58557	1.00052	1	5000	0:17:45	0.86423	4670.45
42	d_y16	-0.0354	y		0.1972	0.05	-0.42157	0.36694	-0.47247	0.31124	1.00021	1	5000	0:17:45	0.86423	4670.45
43	d_y17	0.0366	y		0.1898	0.05	-0.37332	0.41537	-0.40817	0.34357	1.00228	1	5000	0:17:45	0.86423	4670.45
44	d_y18	1.2859	y		0.2496	0.05	0.84291	1.82251	0.85516	1.82939	1.04189	1	5000	0:17:45	0.86423	4670.45
45	d_y19	1.6844	y		0.2452	0.05	1.20849	2.18134	1.24983	2.19267	1.01417	1	5000	0:17:45	0.86423	4670.45
46	d_y20	0.3630	y		0.2002	0.05	0.00516	0.73432	0.00516	0.73432	1.00078	1	5000	0:17:45	0.86423	4670.45
47	d_y21	-0.7245	y		0.1987	0.05	-1.11353	-0.33040	-1.12671	-0.36251	1.00229	1	5000	0:17:45	0.86423	4670.45
48	d_y22	-1.2066	y		0.2291	0.05	-1.71371	-0.79458	-1.62534	-0.76221	1.00222	1	5000	0:17:45	0.86423	4670.45
49	d_y23	1.2131	y		0.2212	0.05	0.76754	1.69179	0.73878	1.62398	1.01748	1	5000	0:17:45	0.86423	4670.45
50	d_y24	-0.4187	y		0.2169	0.05	-0.84268	-0.01619	-0.84685	-0.03823	1.00239	1	5000	0:17:45	0.86423	4670.45
51	d_y25	1.0835	y		0.2175	0.05	0.64685	1.47481	0.64685	1.47277	1.00832	1	5000	0:17:45	0.86423	4670.45
52	d_y26	0.9930	y		0.2127	0.05	0.58300	1.44383	0.57794	1.38793	1.01250	1	5000	0:17:45	0.86423	4670.45
53	d_y27	0.1019	y		0.1927	0.05	-0.27173	0.50482	-0.22700	0.52480	1.00659	1	5000	0:17:45	0.86423	4670.45
54	d_y28	0.0899	y		0.1909	0.05	-0.28616	0.46726	-0.30749	0.43183	1.00374	1	5000	0:17:45	0.86423	4670.45
55	d_y29	2.3396	y		0.2991	0.05	1.81448	2.95500	1.81448	2.95209	1.00907	1	5000	0:17:45	0.86423	4670.45
56	d_y29	0.8508	y		0.2199	0.05	0.41529	1.31850	0.40574	1.28487	1.00068	1	5000	0:17:45	0.86423	4670.45
57	d_y3	0.4846	y		0.2001	0.05	0.09794	0.85487	0.09439	0.84634	1.00116	1	5000	0:17:45	0.86423	4670.45
58	d_y30	-0.8814	y		0.1954	0.05	-1.25852	-0.44579	-1.27031	-0.50091	1.00125	1	5000	0:17:45	0.86423	4670.45
59	d_y4	0.5445	y		0.1972	0.05	0.17691	0.93803	0.17311	0.92654	1.00216	1	5000	0:17:45	0.86423	4670.45
60	d_y5	-1.5021	y		0.2348	0.05	-1.94185	-1.04346	-1.91802	-1.03901	1.00536	1	5000	0:17:45	0.86423	4670.45
61	d_y6	0.2612	y		0.1959	0.05	-0.11388	0.66361	-0.10066	0.66361	1.01557	1	5000	0:17:45	0.86423	4670.45
62	d_y7	1.5712	y		0.2277	0.05	1.13648	2.02675	1.13648	2.01999	1.00742	1	5000	0:17:45	0.86423	4670.45
63	d_y8	0.2431	y		0.1983	0.05	-0.12801	0.65132	-0.15192	0.59978	1.01064	1	5000	0:17:45	0.86423	4670.45
64	d_y9	0.8919	y		0.2107	0.05	0.50706	1.33006	0.50663	1.32328	1.00402	1	5000	0:17:45	0.86423	4670.45

Output for Listing 2

Obs	Parameter	Estimate	constr	hprior	StdDev	Alpha	Credible Lower	Credible Upper	HPDLower	HPDUpper	PSR	converged	iterations	time	rel_eap_dim1	DIC
1	muall	0.7980			0.1226	0.05	0.56441	1.02267	0.56674	1.02370	1.04686	1	5000	0:28:21	0.82280	4634.28
2	varal	0.0326			0.0367	0.05	0.00435	0.14022	0.00367	0.10746	1.00034	1	5000	0:28:21	0.82280	4634.28
3	muaz	1.2608			0.1391	0.05	1.00743	1.53544	0.99946	1.51338	1.00610	1	5000	0:28:21	0.82280	4634.28
4	vara2	0.0516			0.0660	0.05	0.00465	0.22385	0.00177	0.16611	1.00074	1	5000	0:28:21	0.82280	4634.28
5	muaz3	1.1743			0.1479	0.05	0.88026	1.47169	0.86721	1.43111	1.06624	1	5000	0:28:21	0.82280	4634.28
6	vara3	0.0369			0.0455	0.05	0.00473	0.14761	0.00252	0.10874	1.00206	1	5000	0:28:21	0.82280	4634.28
7	a_y1_dim1	0.7929	>	1	0.1735	0.05	0.45489	1.14936	0.48760	1.16040	1.03041	1	5000	0:28:21	0.82280	4634.28
8	a_y2_dim1	0.7950		1	0.1515	0.05	0.49720	1.09589	0.48688	1.07827	1.02792	1	5000	0:28:21	0.82280	4634.28
9	a_y3_dim1	0.7355		1	0.1607	0.05	0.43521	1.04731	0.44372	1.04731	1.02381	1	5000	0:28:21	0.82280	4634.28
10	a_y4_dim1	0.7672		1	0.1718	0.05	0.42255	1.10132	0.40047	1.05768	1.01925	1	5000	0:28:21	0.82280	4634.28
11	a_y5_dim1	0.7324		1	0.1660	0.05	0.38079	1.04929	0.37718	1.02507	1.02875	1	5000	0:28:21	0.82280	4634.28
12	a_y6_dim1	0.7781		1	0.1595	0.05	0.49401	1.14908	0.48540	1.11674	1.02656	1	5000	0:28:21	0.82280	4634.28
13	a_y7_dim1	0.8238		1	0.1876	0.05	0.49655	1.21718	0.48362	1.19086	1.00558	1	5000	0:28:21	0.82280	4634.28
14	a_y8_dim1	0.8740		1	0.1894	0.05	0.53223	1.27993	0.53223	1.25641	1.02600	1	5000	0:28:21	0.82280	4634.28
15	a_y9_dim1	0.9226		1	0.1983	0.05	0.60464	1.41845	0.58984	1.30083	1.01506	1	5000	0:28:21	0.82280	4634.28
16	a_y10_dim1	0.7819		1	0.1567	0.05	0.48568	1.09800	0.46605	1.07374	1.03284	1	5000	0:28:21	0.82280	4634.28
17	a_y11_dim1	1.3720		2	0.1996	0.05	1.06039	1.84831	1.02278	1.77269	1.01922	1	5000	0:28:21	0.82280	4634.28
18	a_y12_dim1	1.1662		2	0.2015	0.05	0.74696	1.62237	0.78256	1.63814	1.00560	1	5000	0:28:21	0.82280	4634.28
19	a_y13_dim1	1.1880		2	0.2060	0.05	0.77389	1.58835	0.79465	1.59536	1.01409	1	5000	0:28:21	0.82280	4634.28
20	a_y14_dim1	1.2202		2	0.2003	0.05	0.78713	1.60656	0.85626	1.63536	1.00926	1	5000	0:28:21	0.82280	4634.28
21	a_y15_dim1	1.2945		2	0.2051	0.05	0.90908	1.76645	0.89750	1.72063	1.00033	1	5000	0:28:21	0.82280	4634.28
22	a_y16_dim1	1.2678		2	0.1831	0.05	0.94327	1.66130	0.92679	1.62722	1.00522	1	5000	0:28:21	0.82280	4634.28
23	a_y17_dim1	1.2523		2	0.1850	0.05	0.90218	1.59846	0.91156	1.59846	1.02847	1	5000	0:28:21	0.82280	4634.28
24	a_y18_dim1	1.4282		2	0.2323	0.05	1.06848	1.93297	1.03512	1.89797	1.00135	1	5000	0:28:21	0.82280	4634.28
25	a_y19_dim1	1.3318		2	0.2123	0.05	0.92876	1.77874	0.91370	1.75027	1.00002	1	5000	0:28:21	0.82280	4634.28
26	a_y20_dim1	1.1363		2	0.2006	0.05	0.71712	1.49107	0.73111	1.49873	1.00438	1	5000	0:28:21	0.82280	4634.28
27	a_y21_dim1	1.1867		3	0.1964	0.05	0.80715	1.55887	0.81423	1.56009	1.02876	1	5000	0:28:21	0.82280	4634.28
28	a_y22_dim1	1.1270		3	0.1871	0.05	0.73646	1.48236	0.72143	1.46574	1.02461	1	5000	0:28:21	0.82280	4634.28
29	a_y23_dim1	1.2087		3	0.1986	0.05	0.86769	1.60858	0.83158	1.56500	1.02846	1	5000	0:28:21	0.82280	4634.28
30	a_y24_dim1	1.2153		3	0.2009	0.05	0.88708	1.62389	0.88133	1.60366	1.02029	1	5000	0:28:21	0.82280	4634.28
31	a_y25_dim1	1.1854		3	0.2031	0.05	0.77248	1.60903	0.72937	1.54365	1.02914	1	5000	0:28:21	0.82280	4634.28
32	a_y26_dim1	1.1913		3	0.2008	0.05	0.83993	1.59692	0.85038	1.59692	1.05373	1	5000	0:28:21	0.82280	4634.28
33	a_y27_dim1	1.0311		3	0.2031	0.05	0.64371	1.40871	0.64299	1.39787	1.03405	1	5000	0:28:21	0.82280	4634.28
34	a_y28_dim1	1.2137		3	0.2049	0.05	0.84771	1.68217	0.79544	1.62155	1.00490	1	5000	0:28:21	0.82280	4634.28
35	a_y29_dim1	1.2074		3	0.1968	0.05	0.85160	1.63960	0.85122	1.61952	1.05098	1	5000	0:28:21	0.82280	4634.28
36	a_y30_dim1	1.1719		3	0.1941	0.05	0.80588	1.54304	0.80588	1.53363	1.05443	1	5000	0:28:21	0.82280	4634.28
37	mucl	0.2304			0.2084	0.05	-0.19179	0.63276	-0.19373	0.60923	1.03070	1	5000	0:28:21	0.82280	4634.28
38	vard	1.2055			0.3719	0.05	0.67939	2.08791	0.59149	1.91338	1.00014	1	5000	0:28:21	0.82280	4634.28
39	d_y1	-1.2053	y		0.2129	0.05	-1.62227	-0.79005	-1.59773	-0.78835	1.00119	1	5000	0:28:21	0.82280	4634.28
40	d_y10	0.5437	y		0.2028	0.05	0.14482	0.92681	0.16865	0.93299	1.02702	1	5000	0:28:21	0.82280	4634.28
41	d_y11	-0.6731	y		0.2244	0.05	-1.13348	-0.25243	-1.11562	-0.24931	1.01255	1	5000	0:28:21	0.82280	4634.28
42	d_y12	0.5065	y		0.2053	0.05	0.11586	0.91389	0.09511	0.88341	1.02447	1	5000	0:28:21	0.82280	4634.28
43	d_y13	-0.5594	y		0.2324	0.05	-1.01253	-0.13105	-1.01253	-0.13200	1.01799	1	5000	0:28:21	0.82280	4634.28
44	d_y14	0.7059	y		0.2157	0.05	0.31487	1.13764	0.27999	1.06516	1.01895	1	5000	0:28:21	0.82280	4634.28
45	d_y15	-2.2059	y		0.3075	0.05	-2.78428	-1.61922	-2.74975	-1.61653	1.00315	1	5000	0:28:21	0.82280	4634.28
46	d_y16	-0.0258	y		0.2277	0.05	-0.44454	0.43604	-0.46424	0.40358	1.03323	1	5000	0:28:21	0.82280	4634.28
47	d_y17	0.0433	y		0.2175	0.05	-0.37694	0.47032	-0.39669	0.42893	1.02793	1	5000	0:28:21	0.82280	4634.28
48	d_y18	1.3789	y		0.2544	0.05	0.92103	1.91599	0.89506	1.83068	1.00072	1	5000	0:28:21	0.82280	4634.28
49	d_y19	1.7732	y		0.2574	0.05	1.27785	2.31006	1.26908	2.25592	1.00047	1	5000	0:28:21	0.82280	4634.28
50	d_y2	0.3517	y		0.1907	0.05	0.00528	0.72112	0.00670	0.72112	1.01136	1	5000	0:28:21	0.82280	4634.28
51	d_y20	-0.7345	y		0.2320	0.05	-1.21504	-0.30061	-1.23223	-0.33655	1.02803	1	5000	0:28:21	0.82280	4634.28
52	d_y21	-1.2435	y		0.2303	0.05	-1.72993	-0.79339	-1.67897	-0.76892	1.00322	1	5000	0:28:21	0.82280	4634.28
53	d_y22	1.2723	y		0.2380	0.05	0.84155	1.74184	0.82160	1.69905	1.01008	1	5000	0:28:21	0.82280	4634.28
54	d_y23	-0.4187	y		0.2202	0.05	-0.87995	-0.01071	-0.84092	-0.00042	1.01971	1	5000	0:28:21	0.82280	4634.28
55	d_y24	1.1376	y		0.2387	0.05	0.68201	1.63917	0.65407	1.53922	1.01756	1	5000	0:28:21	0.82280	4634.28
56	d_y25	1.0381	y		0.2456	0.05	0.55728	1.52241	0.58640	1.52864	1.01649	1	5000	0:28:21	0.82280	4634.28
57	d_y26	0.1170	y		0.2034	0.05	-0.28313	0.49440	-0.24403	0.52276	1.02690	1	5000	0:28:21	0.82280	4634.28
58	d_y27	0.1014	y		0.2091	0.05	-0.28256	0.49497	-0.28567	0.48634	1.01871	1	5000	0:28:21	0.82280	4634.28
59	d_y28	2.4367	y		0.3082	0.05	1.91215	3.06344	1.88877	3.02650	1.00443	1	5000	0:28:21	0.82280	4634.28
60	d_y29	0.8877	y		0.2216	0.05	0.45348	1.33231	0.41171	1.25753	1.04641	1	5000	0:28:21	0.82280	4634.28
61	d_y3	0.4947	y		0.1840	0.05	0.13255	0.87582	0.10492	0.82286	1.02337	1	5000	0:28:21	0.82280	4634.28
62	d_y30	-0.9032	y		0.2114	0.05	-1.33384	-0.51060	-1.35554	-0.55081	1.04134	1	5000	0:28:21	0.82280	4634.28
63	d_y4	0.5166	y		0.1975	0.05	0.12522	0.88738	0.10548	0.86362	1.01671	1	5000	0:28:21	0.82280	4634.28
64	d_y5	-1.4366	y		0.2143	0.05	-1.88566	-1.04217	-1.85371	-1.02621	1.00534	1	5000	0:28:21	0.82280	4634.28
65	d_y6	0.2556	y		0.1809	0.05	-0.12584	0.62432	-0.12849	0.59955	1.00942	1	5000	0:28:21	0.82280	4634.28
66	d_y7	1.5098	y		0.2320	0.05	1.06791	1.97003	1.02875	1.91992	1.02154	1	5000	0:28:21	0.82280	4634.28
67	d_y8	0.2256	y		0.1831	0.05	-0.11194	0.58993	-0.09535	0.60288	1.01566	1	5000	0:28:21	0.82280	4634.28
68	d_y9	0.8644	y		0.2123	0.05	0.45371	1.29377	0.42077	1.23809	1.01354	1	5000	0:28:21	0.82280	4634.28

Output for Listing 3

Obs	Parameter	Estimate	constr	hprior	StdDev	Alpha	Credible Lower	Credible Upper	HPDLower	HPDUpper	PSR	converged	iterations	time	rel_eap_diml	DIC
1	muall	0.8429			0.1378	0.05	0.56783	1.13120	0.60751	1.14478	1.01691	1	5000	0:22:55	0.78894	4668.35
2	varal	0.0482			0.0575	0.05	0.00531	0.21660	0.00276	0.15819	1.04771	1	5000	0:22:55	0.78894	4668.35
3	muaz	1.4047			0.1781	0.05	1.09796	1.78104	1.09037	1.74766	1.03034	1	5000	0:22:55	0.78894	4668.35
4	vara2	0.0609			0.0798	0.05	0.00452	0.25341	0.00198	0.19673	1.00056	1	5000	0:22:55	0.78894	4668.35
5	muaz3	1.1742			0.1768	0.05	0.79435	1.52532	0.77801	1.46736	1.01334	1	5000	0:22:55	0.78894	4668.35
6	vara3	0.0351			0.0416	0.05	0.00429	0.14082	0.00198	0.10220	1.00306	1	5000	0:22:55	0.78894	4668.35
7	a_y10_diml	0.7986		0	0.2526	0.05	0.32521	1.31775	0.31865	1.28942	1.00108	1	5000	0:22:55	0.78894	4668.35
8	a_y20_diml	0.9258		0	0.2643	0.05	0.40228	1.45065	0.40228	1.45065	1.00325	1	5000	0:22:55	0.78894	4668.35
9	a_y30_diml	1.2238		0	0.3446	0.05	0.56711	2.00660	0.65279	2.05040	1.01064	1	5000	0:22:55	0.78894	4668.35
10	a_y1_diml	0.8331	>	1	0.1807	0.05	0.49749	1.20828	0.55056	1.21236	1.00226	1	5000	0:22:55	0.78894	4668.35
11	a_y2_diml	0.8331		1	0.1730	0.05	0.47921	1.18429	0.45540	1.13928	1.00887	1	5000	0:22:55	0.78894	4668.35
12	a_y3_diml	0.7627		1	0.1838	0.05	0.40205	1.13288	0.42698	1.13288	1.02796	1	5000	0:22:55	0.78894	4668.35
13	a_y4_diml	0.8130		1	0.1924	0.05	0.44460	1.23242	0.39696	1.16148	1.01157	1	5000	0:22:55	0.78894	4668.35
14	a_y5_diml	0.7560		1	0.1871	0.05	0.42172	1.13319	0.42749	1.13319	1.01943	1	5000	0:22:55	0.78894	4668.35
15	a_y6_diml	0.8159		1	0.1745	0.05	0.47004	1.14165	0.4678	1.14641	1.00948	1	5000	0:22:55	0.78894	4668.35
16	a_y7_diml	0.8655		1	0.1927	0.05	0.52448	1.27070	0.54052	1.27205	1.00216	1	5000	0:22:55	0.78894	4668.35
17	a_y8_diml	0.9312		1	0.1882	0.05	0.61919	1.37375	0.58380	1.27554	1.00161	1	5000	0:22:55	0.78894	4668.35
18	a_y9_diml	0.9890		1	0.2025	0.05	0.64465	1.46027	0.58507	1.36370	1.00645	1	5000	0:22:55	0.78894	4668.35
19	a_y11_diml	1.5056		2	0.2531	0.05	1.09844	2.12501	1.05906	2.00748	1.00287	1	5000	0:22:55	0.78894	4668.35
20	a_y12_diml	1.2789		2	0.2310	0.05	0.85596	1.75714	0.87906	1.75958	1.01782	1	5000	0:22:55	0.78894	4668.35
21	a_y13_diml	1.2982		2	0.2191	0.05	0.89584	1.78676	0.88311	1.71491	1.00792	1	5000	0:22:55	0.78894	4668.35
22	a_y14_diml	1.3521		2	0.2045	0.05	0.95586	1.75297	0.97156	1.76300	1.01878	1	5000	0:22:55	0.78894	4668.35
23	a_y15_diml	1.4121		2	0.2354	0.05	0.96900	1.90173	1.00700	1.91551	1.02092	1	5000	0:22:55	0.78894	4668.35
24	a_y16_diml	1.3937		2	0.2168	0.05	0.97097	1.82964	0.93528	1.77308	1.01322	1	5000	0:22:55	0.78894	4668.35
25	a_y17_diml	1.3604		2	0.2250	0.05	0.90941	1.77041	0.91362	1.77041	1.02279	1	5000	0:22:55	0.78894	4668.35
26	a_y18_diml	1.5859		2	0.2781	0.05	1.16663	2.25143	1.13401	2.18458	1.02381	1	5000	0:22:55	0.78894	4668.35
27	a_y19_diml	1.4494		2	0.2305	0.05	1.06483	1.94396	1.06464	1.94119	1.00855	1	5000	0:22:55	0.78894	4668.35
28	a_y21_diml	1.2017		3	0.1989	0.05	0.76947	1.61648	0.82064	1.65600	1.00237	1	5000	0:22:55	0.78894	4668.35
29	a_y22_diml	1.1435		3	0.2243	0.05	0.69709	1.60210	0.69352	1.55003	1.00224	1	5000	0:22:55	0.78894	4668.35
30	a_y23_diml	1.2047		3	0.2041	0.05	0.79654	1.63272	0.79504	1.57590	1.02401	1	5000	0:22:55	0.78894	4668.35
31	a_y24_diml	1.1956		3	0.2267	0.05	0.76864	1.66022	0.76864	1.59453	1.01362	1	5000	0:22:55	0.78894	4668.35
32	a_y25_diml	1.1903		3	0.2158	0.05	0.77869	1.68966	0.72295	1.57819	1.00622	1	5000	0:22:55	0.78894	4668.35
33	a_y26_diml	1.1919		3	0.1994	0.05	0.82343	1.59072	0.81489	1.56168	1.00618	1	5000	0:22:55	0.78894	4668.35
34	a_y27_diml	1.0365		3	0.2245	0.05	0.57043	1.43797	0.60653	1.43926	1.00235	1	5000	0:22:55	0.78894	4668.35
35	a_y28_diml	1.2062		3	0.2186	0.05	0.78720	1.65369	0.78720	1.65369	1.00524	1	5000	0:22:55	0.78894	4668.35
36	a_y29_diml	1.2068		3	0.2146	0.05	0.81412	1.68981	0.77274	1.61888	1.01471	1	5000	0:22:55	0.78894	4668.35
37	mud	0.2310			0.2163	0.05	-0.14331	0.66937	-0.13851	0.66937	1.01110	1	5000	0:22:55	0.78894	4668.35
38	vard	1.2197			0.3683	0.05	0.69471	2.08392	0.63124	1.93859	1.00140	1	5000	0:22:55	0.78894	4668.35
39	d_y1	-1.2072	y		0.2030	0.05	-1.61926	-0.78988	-1.58387	-0.76384	1.00333	1	5000	0:22:55	0.78894	4668.35
40	d_y10	0.5447	y		0.1956	0.05	0.15117	0.94783	0.17382	0.94920	1.01081	1	5000	0:22:55	0.78894	4668.35
41	d_y11	-0.7030	y		0.2337	0.05	-1.13849	-0.24756	-1.15666	-0.27658	1.00519	1	5000	0:22:55	0.78894	4668.35
42	d_y12	0.5059	y		0.2128	0.05	0.09235	0.92892	0.15235	0.96837	1.00767	1	5000	0:22:55	0.78894	4668.35
43	d_y13	-0.5688	y		0.2120	0.05	-1.02825	-0.15136	-0.96451	-0.13432	1.00039	1	5000	0:22:55	0.78894	4668.35
44	d_y14	0.7179	y		0.2292	0.05	0.27043	1.15832	0.27043	1.15714	1.01041	1	5000	0:22:55	0.78894	4668.35
45	d_y15	-2.2401	y		0.3033	0.05	-2.85221	-1.66521	-2.81370	-1.66227	1.00904	1	5000	0:22:55	0.78894	4668.35
46	d_y16	-0.2225	y		0.2223	0.05	-0.45260	0.40726	-0.48900	0.35370	1.00578	1	5000	0:22:55	0.78894	4668.35
47	d_y17	0.0592	y		0.2231	0.05	-0.39203	0.45978	-0.39203	0.44560	1.00804	1	5000	0:22:55	0.78894	4668.35
48	d_y18	1.4259	y		0.2713	0.05	0.93676	1.99759	0.92763	1.96570	1.02538	1	5000	0:22:55	0.78894	4668.35
49	d_y19	1.8180	y		0.2710	0.05	1.29069	2.37255	1.28371	2.33576	1.01007	1	5000	0:22:55	0.78894	4668.35
50	d_y2	0.3522	y		0.1961	0.05	-0.03282	0.72056	-0.02847	0.72056	1.00737	1	5000	0:22:55	0.78894	4668.35
51	d_y20	-0.7077	y		0.2096	0.05	-1.15176	-0.32463	-1.13438	-0.32252	1.00001	1	5000	0:22:55	0.78894	4668.35
52	d_y21	-1.2452	y		0.2424	0.05	-1.71899	-0.77898	-1.72318	-0.81548	1.01184	1	5000	0:22:55	0.78894	4668.35
53	d_y22	1.2647	y		0.2378	0.05	0.79480	1.75383	0.85112	1.76506	1.00066	1	5000	0:22:55	0.78894	4668.35
54	d_y23	-0.4144	y		0.2170	0.05	-0.85338	-0.00840	-0.85338	-0.00840	1.00877	1	5000	0:22:55	0.78894	4668.35
55	d_y24	1.1099	y		0.2198	0.05	0.67091	1.53966	0.67091	1.52996	1.00022	1	5000	0:22:55	0.78894	4668.35
56	d_y25	1.0535	y		0.2274	0.05	0.59730	1.49672	0.66475	1.51335	1.00215	1	5000	0:22:55	0.78894	4668.35
57	d_y26	0.1219	y		0.1992	0.05	-0.29714	0.50181	-0.28160	0.51378	1.02075	1	5000	0:22:55	0.78894	4668.35
58	d_y27	0.1133	y		0.1930	0.05	-0.29185	0.49555	-0.25485	0.52510	1.00193	1	5000	0:22:55	0.78894	4668.35
59	d_y28	2.4272	y		0.2947	0.05	1.84773	3.04927	1.93012	3.10257	1.00271	1	5000	0:22:55	0.78894	4668.35
60	d_y29	0.8876	y		0.2100	0.05	0.46779	1.29959	0.50188	1.32127	1.00004	1	5000	0:22:55	0.78894	4668.35
61	d_y3	0.4807	y		0.1850	0.05	0.13096	0.85816	0.12793	0.84229	1.00509	1	5000	0:22:55	0.78894	4668.35
62	d_y30	-0.9268	y		0.2233	0.05	-1.37354	-0.50687	-1.32854	-0.49714	1.00749	1	5000	0:22:55	0.78894	4668.35
63	d_y4	0.5270	y		0.1955	0.05	0.11818	0.90358	0.14292	0.91046	1.00731	1	5000	0:22:55	0.78894	4668.35
64	d_y5	-1.4234	y		0.2266	0.05	-1.86812	-1.01233	-1.87749	-1.04844	1.00245	1	5000	0:22:55	0.78894	4668.35
65	d_y6	0.2650	y		0.1889	0.05	-0.10038	0.60967	-0.09474	0.61419	1.00152	1	5000	0:22:55	0.78894	4668.35
66	d_y7	1.5308	y		0.2361	0.05	1.09082	2.00278	1.09052	1.99505	1.00203	1	5000	0:22:55	0.78894	4668.35
67	d_y8	0.2515	y		0.1803	0.05	-0.11750	0.58735	-0.07458	0.59215	1.01331	1	5000	0:22:55	0.78894	4668.35
68	d_y9	0.8730	y		0.2274	0.05	0.42886	1.32334	0.47696	1.35570	1.00659	1	5000	0:22:55	0.78894	4668.35

Output for Listing 4, prior distributions for correlations

Prior distributions for correlations				
The MEANS Procedure				
Variable	Mean	Std Dev	Skewness	Kurtosis
r1_2	-0.000885414	0.5322223	0.000567655	-1.2200462
r1_3	-0.0016615	0.6088384	0.0037663	-1.4207755
r2_3	-0.000332376	0.5866269	0.0018756	-1.4095893

Prior distributions for correlations									
--------------------------------------	--	--	--	--	--	--	--	--	--

Output for Listing 4, parameter estimates

Obs	Parameter	Estimate	constr	hprior	StdDev	Alpha	Credible Credible				PSR	converged	iterations	time	rel_eap_dim1	rel_eap_dim2	rel_eap_dim3	DIC
							Lower	Upper	HPDLower	HPDUpper								
1	mu_a1	1.4792			0.1056	0.05	1.30392	1.68231	1.30392	1.68231	1.00917	1	5000	0:58:58	0.65433	0.77743	0.86540	4517.92
2	var_a1	0.0430			0.0316	0.05	0.00491	0.12527	0.00410	0.10752	1.04315	1	5000	0:58:58	0.65433	0.77743	0.86540	4517.92
3	a_y1_dim1	1.3437	>	1	0.2044	0.05	0.92852	1.73957	0.92975	1.73995	1.00001	1	5000	0:58:58	0.65433	0.77743	0.86540	4517.92
4	a_y2_dim1	1.4136			0.1828	0.05	1.07848	1.79184	1.05526	1.75538	1.02293	1	5000	0:58:58	0.65433	0.77743	0.86540	4517.92
5	a_y3_dim1	1.4234			0.2074	0.05	1.01086	1.81991	1.04504	1.84256	1.00018	1	5000	0:58:58	0.65433	0.77743	0.86540	4517.92
6	a_y4_dim1	1.3467			0.1933	0.05	0.95690	1.69898	0.99023	1.70545	1.00018	1	5000	0:58:58	0.65433	0.77743	0.86540	4517.92
7	a_y5_dim1	1.4114			0.1938	0.05	1.03504	1.83643	1.01625	1.78072	1.00022	1	5000	0:58:58	0.65433	0.77743	0.86540	4517.92
8	a_y6_dim1	1.3280			0.2192	0.05	0.85102	1.73469	0.83936	1.70400	1.00001	1	5000	0:58:58	0.65433	0.77743	0.86540	4517.92
9	a_y7_dim1	1.4323			0.2116	0.05	1.01282	1.86163	1.03202	1.86815	1.00423	1	5000	0:58:58	0.65433	0.77743	0.86540	4517.92
10	a_y8_dim1	1.5281			0.2137	0.05	1.15898	2.06388	1.06893	1.96934	1.04111	1	5000	0:58:58	0.65433	0.77743	0.86540	4517.92
11	a_y9_dim1	1.5112			0.2073	0.05	1.16042	1.97562	1.10014	1.88676	1.01373	1	5000	0:58:58	0.65433	0.77743	0.86540	4517.92
12	a_y10_dim1	1.4073			0.1978	0.05	0.99142	1.80438	1.04919	1.81640	1.00000	1	5000	0:58:58	0.65433	0.77743	0.86540	4517.92
13	a_y11_dim2	1.6254	>	1	0.2260	0.05	1.29191	2.13707	1.22326	2.01890	1.00337	1	5000	0:58:58	0.65433	0.77743	0.86540	4517.92
14	a_y12_dim2	1.4561			0.1876	0.05	1.13561	1.85051	1.14349	1.85166	1.00105	1	5000	0:58:58	0.65433	0.77743	0.86540	4517.92
15	a_y13_dim2	1.3539			0.1947	0.05	0.91080	1.71907	0.98374	1.77079	1.00585	1	5000	0:58:58	0.65433	0.77743	0.86540	4517.92
16	a_y14_dim2	1.4807			0.2031	0.05	1.11743	1.88950	1.09952	1.85442	1.00811	1	5000	0:58:58	0.65433	0.77743	0.86540	4517.92
17	a_y15_dim2	1.4746			0.1958	0.05	1.08025	1.86350	1.11040	1.87205	1.00015	1	5000	0:58:58	0.65433	0.77743	0.86540	4517.92
18	a_y16_dim2	1.5155			0.1955	0.05	1.14637	1.89283	1.13993	1.87163	1.00087	1	5000	0:58:58	0.65433	0.77743	0.86540	4517.92
19	a_y17_dim2	1.4516			0.1888	0.05	1.11641	1.86217	1.08929	1.79457	1.00897	1	5000	0:58:58	0.65433	0.77743	0.86540	4517.92
20	a_y18_dim2	1.6476			0.2326	0.05	1.25482	2.17390	1.25004	2.11260	1.03054	1	5000	0:58:58	0.65433	0.77743	0.86540	4517.92
21	a_y19_dim2	1.5682			0.1998	0.05	1.22455	1.98830	1.25307	2.01012	1.00017	1	5000	0:58:58	0.65433	0.77743	0.86540	4517.92
22	a_y20_dim2	1.3807			0.1862	0.05	0.98147	1.73720	1.02705	1.74200	1.00320	1	5000	0:58:58	0.65433	0.77743	0.86540	4517.92
23	a_y21_dim3	1.4972	>	1	0.1951	0.05	1.11503	1.91232	1.06183	1.85464	1.00300	1	5000	0:58:58	0.65433	0.77743	0.86540	4517.92
24	a_y22_dim3	1.4748			0.1992	0.05	1.13873	1.89733	1.15288	1.90404	1.00914	1	5000	0:58:58	0.65433	0.77743	0.86540	4517.92
25	a_y23_dim3	1.5608			0.2030	0.05	1.22428	2.04012	1.18879	1.95460	1.01966	1	5000	0:58:58	0.65433	0.77743	0.86540	4517.92
26	a_y24_dim3	1.5712			0.2068	0.05	1.26092	2.03867	1.23724	1.97398	1.00533	1	5000	0:58:58	0.65433	0.77743	0.86540	4517.92
27	a_y25_dim3	1.4998			0.1937	0.05	1.15810	1.87785	1.17309	1.87785	1.00019	1	5000	0:58:58	0.65433	0.77743	0.86540	4517.92
28	a_y26_dim3	1.6092			0.2091	0.05	1.26599	2.06381	1.23124	2.01344	1.00821	1	5000	0:58:58	0.65433	0.77743	0.86540	4517.92
29	a_y27_dim3	1.4613			0.1974	0.05	1.09101	1.88864	1.08958	1.87478	1.00062	1	5000	0:58:58	0.65433	0.77743	0.86540	4517.92
30	a_y28_dim3	1.5203			0.1913	0.05	1.12510	1.92839	1.11857	1.86550	1.01160	1	5000	0:58:58	0.65433	0.77743	0.86540	4517.92
31	a_y29_dim3	1.4286			0.2099	0.05	1.01048	1.89295	0.97299	1.82406	1.00025	1	5000	0:58:58	0.65433	0.77743	0.86540	4517.92
32	a_y30_dim3	1.6342			0.2285	0.05	1.27823	2.13932	1.28491	2.13956	1.03058	1	5000	0:58:58	0.65433	0.77743	0.86540	4517.92
33	mu_d	0.2760			0.2667	0.05	-0.27757	0.77671	-0.27757	0.77671	1.01927	1	5000	0:58:58	0.65433	0.77743	0.86540	4517.92
34	var_d	0.1597			0.4626	0.05	0.85371	2.61897	0.78364	2.47636	1.00246	1	5000	0:58:58	0.65433	0.77743	0.86540	4517.92
35	d_y1	-1.3489	y		0.2552	0.05	-1.85727	-0.86217	-1.86604	-0.89148	1.01047	1	5000	0:58:58	0.65433	0.77743	0.86540	4517.92
36	d_y10	0.6748	y		0.2391	0.05	0.22675	1.19240	0.29040	1.20830	1.00500	1	5000	0:58:58	0.65433	0.77743	0.86540	4517.92
37	d_y11	-0.6786	y		0.2519	0.05	-1.14653	-0.15288	-1.11522	-0.14727	1.01164	1	5000	0:58:58	0.65433	0.77743	0.86540	4517.92
38	d_y12	0.5725	y		0.2535	0.05	0.09441	1.07713	0.09441	1.04562	1.01859	1	5000	0:58:58	0.65433	0.77743	0.86540	4517.92
39	d_y13	-0.5578	y		0.2328	0.05	-1.01898	-0.11762	-0.98190	-0.10330	1.02225	1	5000	0:58:58	0.65433	0.77743	0.86540	4517.92
40	d_y14	0.7926	y		0.2586	0.05	0.29418	1.26689	0.33629	1.28576	1.00101	1	5000	0:58:58	0.65433	0.77743	0.86540	4517.92
41	d_y15	-2.2766	y		0.3048	0.05	-2.89711	-1.67753	-2.93299	-1.77763	1.00356	1	5000	0:58:58	0.65433	0.77743	0.86540	4517.92
42	d_y16	0.0108	y		0.2572	0.05	-0.44511	0.55978	-0.46172	0.49654	1.06305	1	5000	0:58:58	0.65433	0.77743	0.86540	4517.92
43	d_y17	0.0727	y		0.2342	0.05	-0.39155	0.54944	-0.35378	0.55645	1.01827	1	5000	0:58:58	0.65433	0.77743	0.86540	4517.92
44	d_y18	1.5333	y		0.3023	0.05	0.90700	2.13532	1.01777	2.19983	1.00005	1	5000	0:58:58	0.65433	0.77743	0.86540	4517.92
45	d_y19	1.9423	y		0.3100	0.05	1.39232	2.56068	1.37964	2.53697	1.00875	1	5000	0:58:58	0.65433	0.77743	0.86540	4517.92
46	d_y2	0.4432	y		0.2439	0.05	-0.02747	0.96410	-0.04505	0.90146	1.02941	1	5000	0:58:58	0.65433	0.77743	0.86540	4517.92
47	d_y20	-0.7523	y		0.2455	0.05	-1.28533	-0.29596	-1.29577	-0.32643	1.01003	1	5000	0:58:58	0.65433	0.77743	0.86540	4517.92
48	d_y21	-1.4098	y		0.2671	0.05	-1.96364	-0.90339	-1.86618	-0.84234	1.00097	1	5000	0:58:58	0.65433	0.77743	0.86540	4517.92
49	d_y22	1.4481	y		0.2593	0.05	0.95534	1.97836	0.95534	1.96230	1.00149	1	5000	0:58:58	0.65433	0.77743	0.86540	4517.92
50	d_y23	-0.5037	y		0.2579	0.05	-1.02760	0.00928	-1.03695	-0.03325	1.00004	1	5000	0:58:58	0.65433	0.77743	0.86540	4517.92
51	d_y24	1.3131	y		0.2789	0.05	0.79776	1.90778	0.76498	1.82641	1.01322	1	5000	0:58:58	0.65433	0.77743	0.86540	4517.92
52	d_y25	1.1753	y		0.2560	0.05	0.68581	1.66602	0.68101	1.65111	1.00000	1	5000	0:58:58	0.65433	0.77743	0.86540	4517.92
53	d_y26	0.1447	y		0.2431	0.05	-0.31558	0.64221	-0.31558	0.63971	1.00028	1	5000	0:58:58	0.65433	0.77743	0.86540	4517.92
54	d_y27	0.1311	y		0.2309	0.05	-0.30815	0.65334	-0.39661	0.54592	1.00877	1	5000	0:58:58	0.65433	0.77743	0.86540	4517.92
55	d_y28	2.7961	y		0.3355	0.05	2.14527	3.49306	2.20970	3.50730	1.00017	1	5000	0:58:58	0.65433	0.77743	0.86540	4517.92
56	d_y29	1.0013	y		0.2432	0.05	0.51872	1.47861	0.50076	1.45285	1.00097	1	5000	0:58:58	0.65433	0.77743	0.86540	4517.92
57	d_y3	0.6033	y		0.2462	0.05	0.14047	1.06247	0.15361	1.06942	1.01900	1	5000	0:58:58	0.65433	0.77743	0.86540	4517.92
58	d_y30	-1.0774	y		0.2861	0.05	-1.67379	-0.58900	-1.66928	-0.58900	1.00903	1	5000	0:58:58	0.65433	0.77743	0.86540	4517.92
59	d_y4	0.6341	y		0.2256	0.05	0.20952	1.09383	0.19482	1.05322	1.00463	1	5000	0:58:58	0.65433	0.77743	0.86540	4517.92
60	d_y5	-1.6533	y		0.2655	0.05	-2.18795	-1.15031	-2.17409	-1.14282	1.00110	1	5000	0:58:58	0.65433	0.77743	0.86540	4517.92
61	d_y6	0.3193	y		0.2318	0.05	-0.16619	0.74926	-0.13997	0.76466	1.00475	1	5000	0:58:58	0.65433	0.77743	0.86540	4517.92
62	d_y7	1.7742	y		0.2604	0.05	1.26447	2.32240	1.26447	2.30736	1.00396							

Output for Listing 4b, parameter estimates

Obs	Parameter	Estimate	constr	hprior	StdDev	Alpha	Credible		HPDLower	HPDUpper	PSR	converged	iterations	time	rel_eap_	rel_eap_	rel_eap_	DIC
							Lower	Upper							dim1	dim2	dim3	
1	mu _{a1}	1.1490			0.1340	0.05	0.91421	1.42531	0.93195	1.43635	1.02235	1	10000	3:15:11	0.70800	0.76898	0.76719	4489.69
2	var _{a1}	0.0370			0.0455	0.05	0.00318	0.14898	0.00187	0.11525	1.00006	1	10000	3:15:11	0.70800	0.76898	0.76719	4489.69
3	mu _{a2}	1.6282			0.2085	0.05	1.30177	2.04009	1.29353	2.02399	1.02658	1	10000	3:15:11	0.70800	0.76898	0.76719	4489.69
4	var _{a2}	0.0993			0.1307	0.05	0.00754	0.46432	0.00501	0.32394	1.00181	1	10000	3:15:11	0.70800	0.76898	0.76719	4489.69
5	mu _{a3}	1.8142			0.1725	0.05	1.47876	2.17591	1.47010	2.13789	1.00283	1	10000	3:15:11	0.70800	0.76898	0.76719	4489.69
6	var _{a3}	0.0573			0.0815	0.05	0.00580	0.26088	0.00459	0.19483	1.00204	1	10000	3:15:11	0.70800	0.76898	0.76719	4489.69
7	a_y1_dim1	1.0998	>	1	0.1846	0.05	0.73652	1.46268	0.74318	1.46609	1.03740	1	10000	3:15:11	0.70800	0.76898	0.76719	4489.69
8	a_y2_dim1	1.1452		1	0.1827	0.05	0.82282	1.52558	0.82282	1.52433	1.00144	1	10000	3:15:11	0.70800	0.76898	0.76719	4489.69
9	a_y3_dim1	1.1561		1	0.1829	0.05	0.81398	1.54610	0.79159	1.50959	1.00503	1	10000	3:15:11	0.70800	0.76898	0.76719	4489.69
10	a_y4_dim1	1.1099		1	0.1848	0.05	0.72603	1.46815	0.75643	1.47514	1.01752	1	10000	3:15:11	0.70800	0.76898	0.76719	4489.69
11	a_y5_dim1	1.1589		1	0.1925	0.05	0.81206	1.58430	0.83767	1.60042	1.01656	1	10000	3:15:11	0.70800	0.76898	0.76719	4489.69
12	a_y6_dim1	1.0868		1	0.1829	0.05	0.71659	1.46011	0.69962	1.42957	1.00356	1	10000	3:15:11	0.70800	0.76898	0.76719	4489.69
13	a_y7_dim1	1.1567		1	0.1933	0.05	0.80520	1.55957	0.77552	1.50834	1.00756	1	10000	3:15:11	0.70800	0.76898	0.76719	4489.69
14	a_y8_dim1	1.2094		1	0.1924	0.05	0.90795	1.62695	0.88926	1.58744	1.00764	1	10000	3:15:11	0.70800	0.76898	0.76719	4489.69
15	a_y9_dim1	1.2220		1	0.1904	0.05	0.90078	1.65433	0.88082	1.62129	1.00791	1	10000	3:15:11	0.70800	0.76898	0.76719	4489.69
16	a_y10_dim1	1.1517		1	0.1898	0.05	0.79503	1.52615	0.78683	1.51551	1.00511	1	10000	3:15:11	0.70800	0.76898	0.76719	4489.69
17	a_y11_dim2	1.7838	>	2	0.3300	0.05	1.29242	2.50390	1.25222	2.40861	1.00304	1	10000	3:15:11	0.70800	0.76898	0.76719	4489.69
18	a_y12_dim2	1.5722		2	0.2590	0.05	1.15949	2.12934	1.13456	2.09963	1.01474	1	10000	3:15:11	0.70800	0.76898	0.76719	4489.69
19	a_y13_dim2	1.4263		2	0.2708	0.05	0.88826	2.00955	0.91218	2.01707	1.01565	1	10000	3:15:11	0.70800	0.76898	0.76719	4489.69
20	a_y14_dim2	1.6070		2	0.2665	0.05	1.10109	2.17926	1.17014	2.20003	1.01873	1	10000	3:15:11	0.70800	0.76898	0.76719	4489.69
21	a_y15_dim2	1.5953		2	0.2773	0.05	1.09859	2.16762	1.13688	2.19757	1.01815	1	10000	3:15:11	0.70800	0.76898	0.76719	4489.69
22	a_y16_dim2	1.6548		2	0.2794	0.05	1.18005	2.22533	1.12716	2.14758	1.02656	1	10000	3:15:11	0.70800	0.76898	0.76719	4489.69
23	a_y17_dim2	1.5416		2	0.2533	0.05	1.08928	2.06121	1.07435	2.03559	1.00160	1	10000	3:15:11	0.70800	0.76898	0.76719	4489.69
24	a_y18_dim2	1.8235		2	0.3396	0.05	1.32176	2.61458	1.25650	2.49220	1.00464	1	10000	3:15:11	0.70800	0.76898	0.76719	4489.69
25	a_y19_dim2	1.7756		2	0.3496	0.05	1.23188	2.52720	1.12458	2.35947	1.00750	1	10000	3:15:11	0.70800	0.76898	0.76719	4489.69
26	a_y20_dim2	1.4624		2	0.2596	0.05	0.97299	1.94046	1.00159	1.95462	1.02307	1	10000	3:15:11	0.70800	0.76898	0.76719	4489.69
27	a_y21_dim3	1.8110	>	3	0.2544	0.05	1.33033	2.33191	1.30978	2.28123	1.00200	1	10000	3:15:11	0.70800	0.76898	0.76719	4489.69
28	a_y22_dim3	1.7724		3	0.2335	0.05	1.29013	2.24420	1.27735	2.20407	1.00396	1	10000	3:15:11	0.70800	0.76898	0.76719	4489.69
29	a_y23_dim3	1.8278		3	0.2387	0.05	1.41994	2.36767	1.34966	2.27763	1.00012	1	10000	3:15:11	0.70800	0.76898	0.76719	4489.69
30	a_y24_dim3	1.8660		3	0.2640	0.05	1.38742	2.47813	1.36652	2.44586	1.00287	1	10000	3:15:11	0.70800	0.76898	0.76719	4489.69
31	a_y25_dim3	1.7683		3	0.2260	0.05	1.31216	2.20452	1.30858	2.19806	1.00546	1	10000	3:15:11	0.70800	0.76898	0.76719	4489.69
32	a_y26_dim3	1.8837		3	0.2435	0.05	1.45425	2.46813	1.42358	2.38248	1.00227	1	10000	3:15:11	0.70800	0.76898	0.76719	4489.69
33	a_y27_dim3	1.7498		3	0.2213	0.05	1.30349	2.17896	1.29918	2.16268	1.00617	1	10000	3:15:11	0.70800	0.76898	0.76719	4489.69
34	a_y28_dim3	1.7989		3	0.2336	0.05	1.32697	2.24674	1.30665	2.21141	1.00277	1	10000	3:15:11	0.70800	0.76898	0.76719	4489.69
35	a_y29_dim3	1.7172		3	0.2332	0.05	1.22141	2.15919	1.25024	2.17260	1.00253	1	10000	3:15:11	0.70800	0.76898	0.76719	4489.69
36	a_y30_dim3	1.9436		3	0.2906	0.05	1.48740	2.58993	1.41326	2.48777	1.00089	1	10000	3:15:11	0.70800	0.76898	0.76719	4489.69
37	mu _d	0.2479			0.2650	0.05	-0.25478	0.80012	-0.25672	0.79437	1.03606	1	10000	3:15:11	0.70800	0.76898	0.76719	4489.69
38	var _d	1.5919			0.4780	0.05	0.90445	2.77964	0.80599	2.56240	1.00025	1	10000	3:15:11	0.70800	0.76898	0.76719	4489.69
39	d_y1	-1.3089	y		0.2314	0.05	-1.77978	-0.86922	-1.78275	-0.87556	1.00714	1	10000	3:15:11	0.70800	0.76898	0.76719	4489.69
40	d_y10	0.6204	y		0.2164	0.05	0.19254	1.06943	0.24427	1.09286	1.01447	1	10000	3:15:11	0.70800	0.76898	0.76719	4489.69
41	d_y11	-0.7603	y		0.2567	0.05	-1.27279	-0.26789	-1.20448	-0.22831	1.04024	1	10000	3:15:11	0.70800	0.76898	0.76719	4489.69
42	d_y12	0.5702	y		0.2423	0.05	0.13351	1.03996	0.13351	1.03257	1.06558	1	10000	3:15:11	0.70800	0.76898	0.76719	4489.69
43	d_y13	-0.6098	y		0.2431	0.05	-1.08146	-0.17547	-1.06814	-0.16670	1.05429	1	10000	3:15:11	0.70800	0.76898	0.76719	4489.69
44	d_y14	0.7783	y		0.2354	0.05	0.31734	1.22798	0.36032	1.24767	1.03000	1	10000	3:15:11	0.70800	0.76898	0.76719	4489.69
45	d_y15	-2.3831	y		0.3412	0.05	-3.07691	-1.78055	-3.03199	-1.75571	1.03099	1	10000	3:15:11	0.70800	0.76898	0.76719	4489.69
46	d_y16	-0.0273	y		0.2505	0.05	-0.53352	0.45780	-0.49507	0.47713	1.05447	1	10000	3:15:11	0.70800	0.76898	0.76719	4489.69
47	d_y17	0.0401	y		0.2476	0.05	-0.44306	0.52482	-0.44384	0.51474	1.05761	1	10000	3:15:11	0.70800	0.76898	0.76719	4489.69
48	d_y18	1.5486	y		0.3028	0.05	0.99617	2.18005	0.98815	2.15513	1.04035	1	10000	3:15:11	0.70800	0.76898	0.76719	4489.69
49	d_y19	2.0398	y		0.3337	0.05	1.43309	2.80364	1.39480	2.67828	1.00922	1	10000	3:15:11	0.70800	0.76898	0.76719	4489.69
50	d_y2	0.3995	y		0.2072	0.05	0.00575	0.81894	-0.02005	0.76742	1.01211	1	10000	3:15:11	0.70800	0.76898	0.76719	4489.69
51	d_y20	-0.8095	y		0.2561	0.05	-1.30955	-0.32988	-1.26175	-0.30799	1.05048	1	10000	3:15:11	0.70800	0.76898	0.76719	4489.69
52	d_y21	-1.5092	y		0.2965	0.05	-2.08671	-0.96689	-2.06185	-0.95152	1.02374	1	10000	3:15:11	0.70800	0.76898	0.76719	4489.69
53	d_y22	1.5213	y		0.2945	0.05	0.95753	2.12354	0.95753	2.11323	1.06551	1	10000	3:15:11	0.70800	0.76898	0.76719	4489.69
54	d_y23	-0.5167	y		0.2597	0.05	-1.07140	-0.02267	-0.99057	0.02295	1.03621	1	10000	3:15:11	0.70800	0.76898	0.76719	4489.69
55	d_y24	1.3600	y		0.3002	0.05	0.78351	1.94969	0.78510	1.94969	1.06467	1	10000	3:15:11	0.70800	0.76898	0.76719	4489.69
56	d_y25	1.2213	y		0.2848	0.05	0.69438	1.84257	0.66064	1.77713	1.03792	1	10000	3:15:11	0.70800	0.76898	0.76719	4489.69
57	d_y26	0.1373	y		0.2468	0.05	-0.37615	0.63037	-0.35027	0.63311	1.04929	1	10000	3:15:11	0.70800	0.76898	0.76719	4489.69
58	d_y27	0.1171	y		0.2590	0.05	-0.40278	0.62124	-0.37413	0.63644	1.02616	1	10000	3:15:11	0.70800	0.76898	0.76719	4489.69
59	d_y28	2.9051	y		0.3708	0.05	2.23790	3.65939	2.26338	3.65996	1.03317	1	10000	3:15:11	0.70800	0.76898	0.76719	4489.69
60	d_y29	1.0198	y		0.2713	0.05	0.49285	1.58017	0.46469	1.52118	1.05800	1	10000	3:15:11	0.70800	0.76898	0.76719	4489.69
61	d_y3	0.5640	y		0.2192	0.05	0.12451	1.01539	0.12393	1.01013	1.02283	1	10000	3:15:11	0.70			

Output for Listing 5

Obs	Parameter	Estimate	constr	hprior	StdDev	Alpha	Credible		HPDLower	HPDUpper	PSR	converged	iterations	time	rel_eap	rel_eap	rel_eap	rel_eap	DIC
							Lower	Upper							dim1	dim2	dim3	dim4	
1	muall	1.0718			0.0813	0.05	0.90402	1.23718	0.91921	1.24123	1.00128	1	5000	4:35:33	0.61797	0.37226	0.44080	0.63863	4567.45
2	varal	0.0262			0.0208	0.05	0.00800	0.08524	0.00716	0.07648	1.00056	1	5000	4:35:33	0.61797	0.37226	0.44080	0.63863	4567.45
3	muua2	1.0902			0.0930	0.05	0.91106	1.27821	0.92300	1.28216	1.00274	1	5000	4:35:33	0.61797	0.37226	0.44080	0.63863	4567.45
4	vara2	0.0745			0.0569	0.05	0.01859	0.20358	0.01355	0.17978	1.01075	1	5000	4:35:33	0.61797	0.37226	0.44080	0.63863	4567.45
5	a_y1_dim1	1.0426	>	1	0.1704	0.05	0.67555	1.34355	0.66279	1.32103	1.00180	1	5000	4:35:33	0.61797	0.37226	0.44080	0.63863	4567.45
6	a_y2_dim1	1.0420			0.1562	0.05	0.71374	1.33966	0.72482	1.33985	1.00009	1	5000	4:35:33	0.61797	0.37226	0.44080	0.63863	4567.45
7	a_y3_dim1	1.0040			0.1592	0.05	0.65049	1.29712	0.72118	1.34942	1.00981	1	5000	4:35:33	0.61797	0.37226	0.44080	0.63863	4567.45
8	a_y4_dim1	1.0306			0.1472	0.05	0.73487	1.34712	0.71535	1.32244	1.00067	1	5000	4:35:33	0.61797	0.37226	0.44080	0.63863	4567.45
9	a_y5_dim1	0.9007			0.1646	0.05	0.62769	1.29071	0.68918	1.30504	1.00053	1	5000	4:35:33	0.61797	0.37226	0.44080	0.63863	4567.45
10	a_y6_dim1	1.0037			0.1635	0.05	0.62543	1.27792	0.67950	1.31763	1.00067	1	5000	4:35:33	0.61797	0.37226	0.44080	0.63863	4567.45
11	a_y7_dim1	1.0538			0.1643	0.05	0.69625	1.37470	0.69547	1.35328	1.00119	1	5000	4:35:33	0.61797	0.37226	0.44080	0.63863	4567.45
12	a_y8_dim1	1.1319			0.1613	0.05	0.84872	1.46175	0.84777	1.44535	1.00029	1	5000	4:35:33	0.61797	0.37226	0.44080	0.63863	4567.45
13	a_y9_dim1	1.1565			0.1660	0.05	0.87443	1.56479	0.87223	1.55261	1.00057	1	5000	4:35:33	0.61797	0.37226	0.44080	0.63863	4567.45
14	a_y10_dim1	1.0293			0.1644	0.05	0.64145	1.34570	0.66903	1.34617	1.00016	1	5000	4:35:33	0.61797	0.37226	0.44080	0.63863	4567.45
15	a_y11_dim1	1.1769			0.1777	0.05	0.87485	1.58747	0.83912	1.53904	1.00187	1	5000	4:35:33	0.61797	0.37226	0.44080	0.63863	4567.45
16	a_y12_dim1	1.0405			0.1576	0.05	0.70373	1.34047	0.69981	1.33277	1.03101	1	5000	4:35:33	0.61797	0.37226	0.44080	0.63863	4567.45
17	a_y13_dim1	1.0353			0.1490	0.05	0.73766	1.32663	0.75789	1.33066	1.00016	1	5000	4:35:33	0.61797	0.37226	0.44080	0.63863	4567.45
18	a_y14_dim1	1.0526			0.1498	0.05	0.71029	1.34662	0.71911	1.34662	1.00084	1	5000	4:35:33	0.61797	0.37226	0.44080	0.63863	4567.45
19	a_y15_dim1	1.0901			0.1739	0.05	0.71545	1.42573	0.73931	1.42593	1.00226	1	5000	4:35:33	0.61797	0.37226	0.44080	0.63863	4567.45
20	a_y16_dim1	1.1044			0.1543	0.05	0.77379	1.41585	0.79184	1.42968	1.01142	1	5000	4:35:33	0.61797	0.37226	0.44080	0.63863	4567.45
21	a_y17_dim1	1.0796			0.1547	0.05	0.75288	1.40084	0.79228	1.42712	1.00026	1	5000	4:35:33	0.61797	0.37226	0.44080	0.63863	4567.45
22	a_y18_dim1	1.1997			0.1823	0.05	0.89997	1.60151	0.89997	1.58684	1.00708	1	5000	4:35:33	0.61797	0.37226	0.44080	0.63863	4567.45
23	a_y19_dim1	1.1262			0.1639	0.05	0.82020	1.47785	0.82020	1.46652	1.00207	1	5000	4:35:33	0.61797	0.37226	0.44080	0.63863	4567.45
24	a_y20_dim1	0.9912			0.1562	0.05	0.65901	1.25011	0.65901	1.23948	1.00020	1	5000	4:35:33	0.61797	0.37226	0.44080	0.63863	4567.45
25	a_y21_dim1	1.0965			0.1546	0.05	0.82213	1.40043	0.82213	1.40043	1.00530	1	5000	4:35:33	0.61797	0.37226	0.44080	0.63863	4567.45
26	a_y22_dim1	1.0247			0.1539	0.05	0.67211	1.30936	0.69517	1.31390	1.00190	1	5000	4:35:33	0.61797	0.37226	0.44080	0.63863	4567.45
27	a_y23_dim1	1.1109			0.1657	0.05	0.81641	1.45997	0.79748	1.43626	1.00486	1	5000	4:35:33	0.61797	0.37226	0.44080	0.63863	4567.45
28	a_y24_dim1	1.0894			0.1629	0.05	0.76677	1.44522	0.79256	1.44925	1.00024	1	5000	4:35:33	0.61797	0.37226	0.44080	0.63863	4567.45
29	a_y25_dim1	1.0695			0.1648	0.05	0.73882	1.39211	0.74505	1.39211	1.00070	1	5000	4:35:33	0.61797	0.37226	0.44080	0.63863	4567.45
30	a_y26_dim1	1.0955			0.1505	0.05	0.80666	1.38894	0.80518	1.37834	1.00005	1	5000	4:35:33	0.61797	0.37226	0.44080	0.63863	4567.45
31	a_y27_dim1	0.9686			0.1622	0.05	0.59578	1.24961	0.57862	1.22227	1.00132	1	5000	4:35:33	0.61797	0.37226	0.44080	0.63863	4567.45
32	a_y28_dim1	1.0913			0.1713	0.05	0.76636	1.49386	0.75692	1.45994	1.00055	1	5000	4:35:33	0.61797	0.37226	0.44080	0.63863	4567.45
33	a_y29_dim1	1.1297			0.1629	0.05	0.84575	1.46911	0.83755	1.45731	1.00671	1	5000	4:35:33	0.61797	0.37226	0.44080	0.63863	4567.45
34	a_y30_dim1	1.1185			0.1517	0.05	0.83882	1.45470	0.83882	1.44840	1.00007	1	5000	4:35:33	0.61797	0.37226	0.44080	0.63863	4567.45
35	a_y1_dim2	0.9127	>	2	0.2198	0.05	0.45197	1.30695	0.44705	1.28682	1.00984	1	5000	4:35:33	0.61797	0.37226	0.44080	0.63863	4567.45
36	a_y2_dim2	1.1324		2	0.2251	0.05	0.74141	1.65096	0.62569	1.51293	1.00045	1	5000	4:35:33	0.61797	0.37226	0.44080	0.63863	4567.45
37	a_y3_dim2	1.0984		2	0.2217	0.05	0.64702	1.51169	0.64702	1.51169	1.00174	1	5000	4:35:33	0.61797	0.37226	0.44080	0.63863	4567.45
38	a_y4_dim2	0.9531		2	0.2281	0.05	0.39000	1.37745	0.46046	1.39320	1.01620	1	5000	4:35:33	0.61797	0.37226	0.44080	0.63863	4567.45
39	a_y5_dim2	1.1792		2	0.2599	0.05	0.77835	1.74275	0.75388	1.69176	1.00000	1	5000	4:35:33	0.61797	0.37226	0.44080	0.63863	4567.45
40	a_y6_dim2	0.9370		2	0.2144	0.05	0.48041	1.35976	0.55831	1.39289	1.00068	1	5000	4:35:33	0.61797	0.37226	0.44080	0.63863	4567.45
41	a_y7_dim2	0.9807		2	0.2452	0.05	0.42605	1.44083	0.52636	1.45682	1.00325	1	5000	4:35:33	0.61797	0.37226	0.44080	0.63863	4567.45
42	a_y8_dim2	0.9786		2	0.2282	0.05	0.53274	1.46632	0.53274	1.44909	1.00031	1	5000	4:35:33	0.61797	0.37226	0.44080	0.63863	4567.45
43	a_y9_dim2	0.8734		2	0.2478	0.05	0.31291	1.31080	0.37842	1.32897	1.00535	1	5000	4:35:33	0.61797	0.37226	0.44080	0.63863	4567.45
44	a_y10_dim2	1.1240		2	0.2380	0.05	0.62990	1.65963	0.53950	1.51235	1.04117	1	5000	4:35:33	0.61797	0.37226	0.44080	0.63863	4567.45
45	a_y11_dim3	1.0348	>	2	0.2301	0.05	0.57798	1.47877	0.57751	1.47069	1.01130	1	5000	4:35:33	0.61797	0.37226	0.44080	0.63863	4567.45
46	a_y12_dim3	1.0994		2	0.2498	0.05	0.57520	1.57264	0.64389	1.61007	1.00024	1	5000	4:35:33	0.61797	0.37226	0.44080	0.63863	4567.45
47	a_y13_dim3	0.9404		2	0.2458	0.05	0.45097	1.39840	0.44707	1.34840	1.00245	1	5000	4:35:33	0.61797	0.37226	0.44080	0.63863	4567.45
48	a_y14_dim3	1.1146		2	0.2473	0.05	0.66556	1.65872	0.61943	1.56654	1.00092	1	5000	4:35:33	0.61797	0.37226	0.44080	0.63863	4567.45
49	a_y15_dim3	1.0196		2	0.2434	0.05	0.48844	1.50781	0.55285	1.51619	1.00645	1	5000	4:35:33	0.61797	0.37226	0.44080	0.63863	4567.45
50	a_y16_dim3	1.0889		2	0.2306	0.05	0.58454	1.56147	0.66151	1.61833	1.00564	1	5000	4:35:33	0.61797	0.37226	0.44080	0.63863	4567.45
51	a_y17_dim3	0.9689		2	0.2312	0.05	0.51995	1.37049	0.51995	1.36938	1.00326	1	5000	4:35:33	0.61797	0.37226	0.44080	0.63863	4567.45
52	a_y18_dim3	1.0706		2	0.2366	0.05	0.64760	1.64290	0.61875	1.55640	1.00061	1	5000	4:35:33	0.61797	0.37226	0.44080	0.63863	4567.45
53	a_y19_dim3	1.1850		2	0.2477	0.05	0.73690	1.71530	0.73690	1.69890	1.00862	1	5000	4:35:33	0.61797	0.37226	0.44080	0.63863	4567.45
54	a_y20_dim3	1.2061		2	0.2386	0.05	0.78511	1.73040	0.70289	1.59377	1.00434	1	5000	4:35:33	0.61797	0.37226	0.44080	0.63863	4567.45
55	a_y21_dim4	1.1457	>	2	0.2173	0.05	0.76783	1.65837	0.79296	1.66623	1.01331	1	5000	4:35:33	0.61797	0.37226	0.44080	0.63863	4567.45
56	a_y22_dim4	1.1842		2	0.2098	0.05	0.81763	1.64529	0.78599	1.58163	1.02399	1	5000	4:35:33	0.61797	0.37226	0.44080	0.63863	4567.45
57	a_y23_dim4	1.1810		2	0.2447	0.05	0.76917	1.70126	0.76417	1.65361	1.00412	1	5000	4:35:33	0.61797	0.37226	0.44080	0.63863	4567.45
58	a_y24_dim4	1.2148		2	0.2196	0.05	0.85735	1.70264	0.84447	1.65922	1.03373	1</							

Appendix C

Simulation study (SAS code)

The SAS code used for the simulation study is given below:

```

%INCLUDE "c:\SAS-Macros\HBMIRT-Macro.sas";
LIBNAME results "e:\";

%MACRO sim2plmd(n, k, dim, r, rep, Var_a=0.04, seed=12345, itemnum=1);

  DATA itempar;
    DO rep=1 TO &rep;
      DO k=1 TO &k;
        a=1+SQRT(&Var_a)*NORMAL(1);
        d=NORMAL(1);
        OUTPUT;
      END;
    END;
  RUN;
  DATA itempar2; SET itempar(KEEP=rep k a d);
  FORMAT label_a $5. label_d $5.;
  label_a="a"||LEFT(k); label_d="d"||LEFT(k);
  PROC TRANSPOSE DATA=itempar2 OUT=itempar_a(DROP=_NAME_); VAR a; ID label_a; BY rep;
  PROC TRANSPOSE DATA=itempar2 OUT=itempar_d(DROP=_NAME_); VAR d; ID label_d; BY rep;
  RUN;
  DATA IrtBinary;
  ARRAY _theta(&dim) _thetal-_theta&dim;
  DO rep=1 TO &rep;
    DO person=1 TO &n;
      _general_factor_=NORMAL(&seed);
      DO dim=1 TO &dim;
        _theta(dim)=SQRT(&r)*_general_factor_+SQRT(1-&r)*NORMAL(&seed);
      END;
      OUTPUT;
    END;
  END;
  RUN;
  DATA IrtBinary; MERGE IrtBinary itempar_a itempar_d; BY rep;
  ARRAY _theta(&dim) _thetal-_theta&dim;
  ARRAY a(&k) a1-a&k;
  ARRAY d(&k) d1-d&k;
  ARRAY y(&k) y&itemnum-y%EVAL(&itemnum+&k-1);
  DO j=1 TO &k;
    %DO i=1 %TO &dim;
      IF j>(&i-1)*&k/&dim AND j LE &k/&dim*%i THEN _theta=_theta(&i);
    %END;
    y(j)=EXP(-d(j)+a(j)*_theta_)/(1+EXP(-d(j)+a(j)*_theta_))>RANUNI(1);
  END;
  DROP j a1-a&k d1-d&k;
  RUN;
%MEND;

```

```

%sim2plmd(_n=&nobs_, _k=&kitems_, _dim=1, _r=0, rep=&replicates_, Var_a=&var_a, seed=12345, itemnum=1);

%MACRO MonteCarlo(_replicates_, _nobs_=100, _kitems_=25,
  _maxnmc=5E4, _nbi=5E3, _thin=1, _ESSconv=0, _PSRconv=1.1, _iterationsteps=1E3,
  _maxtune=0, _ntu=500, _hmaxtune=100, _hntu=500,);

OPTIONS LINESIZE=200 NOCENTER;

%LET _var_a=0.04;
%sim2plmd(_n=&nobs_, _k=&kitems_, _dim=1, _r=0, rep=&replicates_, Var_a=&var_a, seed=12345, itemnum=1);

DATA results0 results1 results2 results3 results_eap0 results_eap1 results_eap2 results_eap3; SET _NULL_;
RUN;

%MACRO itemlist(k);
  %DO i=1 %TO &k; %&i %END;
%MEND;

%DO _loop=1 %TO &replicates_;
  OPTIONS NONOTES;

  DATA eap0 eap1 eap2 eap3 mlrt postsumint1 postsumint2 postsumint3 _convstat _slopes _intercepts; SET _NULL_;
  DATA repdat; SET IrtBinary(WHERE=(rep=&_loop_));
  RUN;

  %PUT Replication %TRIM(&_loop_) (of %TRIM(&replicates_)), model 0;
  * ML estimation (PROC IRT);
  ODS GRAPHICS OFF;
  ODS EXCLUDE ALL;
  ODS NORESULTS;

  * use nominal model to obtain intercepts instead of difficulty parameters;
  PROC IRT DATA=repdat OUT=eap0(KEEP=person _Factor1) SCOREMETHOD=EAP;
    VAR y1-y25;
    MODEL y1-y25/RESFUNC=NOMINAL;
    ODS OUTPUT ParameterEstimates=_parest ConvergenceStatus=_convstat;
  RUN;

  ODS GRAPHICS ON;
  ODS EXCLUDE NONE;
  ODS RESULTS;

  DATA _convstat; SET _convstat;
    IF Status=0 THEN converged=1; ELSE converged=0;
  DATA _slopes; SET _parest(WHERE=(Parameter="Slope"));
    FORMAT _NAME_ $8. Par $5.;
    _NAME_="a"||SUBSTR(Item,2);
    Par="a";
  DATA _intercepts; SET _parest(WHERE=(Parameter="Intercept"));
    FORMAT _NAME_ $8. Par $5.;
    _NAME_="d"||SUBSTR(Item,2);
    Par="d";
    orig_Estimate=Estimate;

```

```

        Estimate=-1*orig_Estimate;

DATA eap0; SET eap0;

        RENAME _Factor1=eap_dim1;
        eap_sd_dim1=.;

DATA mlirt; SET _slopes _intercepts;

        DROP Item Parameter;

DATA mlirt; SET mlirt; IF _N=1 THEN SET _convstat(KEEP=converged);

RUN;

%PUT Replication %TRIM(&_loop_) (of %TRIM(&_replicates_)), model 1;
* 2PL, uninformative;
%HBMIRT(repdat, id=person,
        factors=
                #1 %itemlist(&_kitems_) [1]
        ,
        covar=free, model=twop, link=logit, priors=user,
        alpha=.05, output=no,
        maxnmc=&_maxnmc_, nbi=&_nbi_, thin=&_thin_, ESSconv=&_ESSconv_, PSRconv=&_PSRconv_,
iterationsteps=&_iterationsteps_,
        maxtune=&_maxtune_, ntu=&_ntu_, hmaxtune=&_hmaxtune_, hntu=&_hntu_,
        seed=123456,
        postsumint=postsumint1, outpost=outpost, eap=eap1, svindat=none, svoutdat=svuninf, svlastitdat=none,
svlastitout=svlastitout, CPOdat=CPOdat,
        var_beta=1, rdist=yes,
        prior_mean_a=1, prior_var_a=100, prior_mean_d=0, prior_var_d=100);

%PUT Replication %TRIM(&_loop_) (of %TRIM(&_replicates_)), model 2;
* 2PL, informative;
%HBMIRT(repdat, id=person,
        factors=
                #1 %itemlist(&_kitems_) [1]
        ,
        covar=free, model=twop, link=logit, priors=user,
        alpha=.05, output=no,
        maxnmc=&_maxnmc_, nbi=&_nbi_, thin=&_thin_, ESSconv=&_ESSconv_, PSRconv=&_PSRconv_,
iterationsteps=&_iterationsteps_,
        maxtune=&_maxtune_, ntu=&_ntu_, hmaxtune=&_hmaxtune_, hntu=&_hntu_,
        seed=123456,
        postsumint=postsumint2, outpost=outpost, eap=eap2, svindat=none, svoutdat=svinf, svlastitdat=none,
svlastitout=svlastitout, CPOdat=CPOdat,
        var_beta=1, rdist=yes,
        prior_mean_a=1, prior_var_a=4, prior_mean_d=0, prior_var_d=4);

%PUT Replication %TRIM(&_loop_) (of %TRIM(&_replicates_)), model 3;
%HBMIRT(repdat, id=person,
        factors=
                #1 %itemlist(&_kitems_) [1]
        ,
        covar=free, model=twop, link=logit, priors=hierarchical,
        alpha=.05, output=no,
        maxnmc=&_maxnmc_, nbi=&_nbi_, thin=&_thin_, ESSconv=&_ESSconv_, PSRconv=&_PSRconv_,
iterationsteps=&_iterationsteps_,
        maxtune=&_maxtune_, ntu=&_ntu_, hmaxtune=&_hmaxtune_, hntu=&_hntu_,
        seed=123456,
        postsumint=postsumint3, outpost=outpost, eap=eap3, svindat=none, svoutdat=svhier, svlastitdat=none,
svlastitout=svlastitout, CPOdat=CPOdat,

```

```

var_beta=1, rdist=yes,
prior_mean_a=1, prior_var_a=4, prior_mean_d=0, prior_var_d=4);

%PUT Replication %TRIM(&_loop_) (of %TRIM(&_replicates_)), model 4;
%HBMIRT(repdat, id=person,
factors=
    #1 %itemlist(&_kitems_) [1]
,
covar=free, model=twop, link=logit, priors=user,
alpha=.05, output=no,
maxnmc=&_maxnmc_, nbi=&_nbi_, thin=&_thin_, ratioCPO=0, ESSconv=&_ESSconv_, PSRconv=&_PSRconv_,
iterationsteps=&_iterationsteps_,
maxxtune=&_maxxtune_, ntu=&_ntu_, hmaxxtune=&_hmaxxtune_, hntu=&_hntu_,
seed=123456,
postsumint=postsumint4, outpost=outpost4, eap=eap4, svindat=none, svoutdat=svm4,
CPodat=CPodat2pl,
prior_mean_a=1, prior_var_a=0.04, prior_mean_d=0, prior_var_d=1);

OPTIONS NONOTES;
%MACRO eap(model);
    DATA _corr _cover_eap results_eap&model; SET _NULL_;
    DATA _tmp; MERGE repdat(KEEP=person _thetal) eap&model; BY person;
        IF eap_dim1-1.96*eap_sd_dim1>_thetal OR eap_dim1+1.96*eap_sd_dim1<_thetal THEN cover_eap=0; ELSE
cover_eap=1;
    PROC MEANS DATA=_tmp NOPRINT; OUTPUT OUT=_cover_eap MEAN(cover_eap)=;
    PROC CORR DATA=_tmp OUTP=_corr(WHERE=( _TYPE_="CORR")) NOPRINT; VAR eap_dim1; WITH _thetal;
    DATA results_eap&model; MERGE _corr _cover_eap(DROP=_TYPE_); rel_eap_true=eap_dim1**2; KEEP rel_eap_true cover_eap;
    RUN;
%MEND;
%eap(0); DATA results_eap0; SET results_eap0; rep=&_loop_; RUN; * no coverage, because PROC IRT does not give SDs for EAPs;
%eap(1); DATA results_eap1; SET results_eap1; rep=&_loop_; RUN;
%eap(2); DATA results_eap2; SET results_eap2; rep=&_loop_; RUN;
%eap(3); DATA results_eap3; SET results_eap3; rep=&_loop_; RUN;
%eap(4); DATA results_eap3; SET results_eap3; rep=&_loop_; RUN;

DATA mlirt; SET mlirt; model=0; rep=&_loop_; IF _N_=1 THEN SET results_eap0;
DATA postsumint1; SET postsumint1; model=1; rep=&_loop_; IF _N_=1 THEN SET results_eap1;
DATA postsumint2; SET postsumint2; model=2; rep=&_loop_; IF _N_=1 THEN SET results_eap2;
DATA postsumint3; SET postsumint3; model=3; rep=&_loop_; IF _N_=1 THEN SET results_eap3;
DATA postsumint4; SET postsumint4; model=4; rep=&_loop_; IF _N_=1 THEN SET results_eap4;

DATA results0; SET results0 mlirt;
DATA results1; SET results1 postsumint1;
DATA results2; SET results2 postsumint2;
DATA results3; SET results3 postsumint3;
DATA results4; SET results4 postsumint4;

RUN;

%END;

PROC TRANSPOSE DATA=Itempar_d OUT=Itempar_d_trans(RENAME=(COL1=poppar)); BY rep;
PROC TRANSPOSE DATA=Itempar_a OUT=Itempar_a_trans(RENAME=(COL1=poppar)); BY rep;
RUN;

DATA %LEFT(results.n%LEFT(&_nobs_)_k%LEFT(&_kitems_)_M0); SET results0;
DATA %LEFT(results.n%LEFT(&_nobs_)_k%LEFT(&_kitems_)_M1); SET results1;

FORMAT _NAME_ $8. Par $5.;

```



```

        IF SUBSTR(Parameter,1,1)="a" THEN DO; Par="a"; _NAME_="a"||SCAN(SCAN(Parameter, 2, "_"), 1, "y"); END;
        IF SUBSTR(Parameter,1,1)="d" THEN DO; Par="d"; _NAME_="d"||SCAN(SCAN(Parameter, 2, "_"), 1, "y"); END;
DATA %LEFT(results.n%LEFT(&_nobs_)_k%LEFT(&_kitems_)_M2); SET results2;
        FORMAT _NAME_ $8. Par $5.;
        IF SUBSTR(Parameter,1,1)="a" THEN DO; Par="a"; _NAME_="a"||SCAN(SCAN(Parameter, 2, "_"), 1, "y"); END;
        IF SUBSTR(Parameter,1,1)="d" THEN DO; Par="d"; _NAME_="d"||SCAN(SCAN(Parameter, 2, "_"), 1, "y"); END;
DATA %LEFT(results.n%LEFT(&_nobs_)_k%LEFT(&_kitems_)_M3); SET results3;
        FORMAT _NAME_ $8. Par $5.;
        IF Parameter="mual" THEN DO; Par="mual"; _NAME_=Parameter; poppar=1; END;
        IF Parameter="varal" THEN DO; Par="varal"; _NAME_=Parameter; poppar=&_var_a; END;
        IF Parameter="mud" THEN DO; Par="mud"; _NAME_=Parameter; poppar=0; END;
        IF Parameter="vard" THEN DO; Par="vard"; _NAME_=Parameter; poppar=1; END;
        IF SUBSTR(Parameter,1,1)="a" THEN DO; Par="a"; _NAME_="a"||SCAN(SCAN(Parameter, 2, "_"), 1, "y"); END;
        IF SUBSTR(Parameter,1,1)="d" THEN DO; Par="d"; _NAME_="d"||SCAN(SCAN(Parameter, 2, "_"), 1, "y"); END;
RUN;
DATA %LEFT(results.n%LEFT(&_nobs_)_k%LEFT(&_kitems_)_M4); SET results4;
        FORMAT _NAME_ $8. Par $5.;
        IF SUBSTR(Parameter,1,1)="a" THEN DO; Par="a"; _NAME_="a"||SCAN(SCAN(Parameter, 2, "_"), 1, "y"); END;
        IF SUBSTR(Parameter,1,1)="d" THEN DO; Par="d"; _NAME_="d"||SCAN(SCAN(Parameter, 2, "_"), 1, "y"); END;
RUN;

DATA Itempar; SET Itempar_a_trans Itempar_d_trans;
PROC SORT DATA=Itempar; BY rep _NAME_;
RUN;

*** RESULTS ML (PROC IRT);
DATA _tmp _tmp2; SET _NULL_;
PROC SORT DATA=results0; BY rep _NAME_;
DATA _tmp; MERGE results0 Itempar; BY rep _NAME_;
        IF Estimate-1.96*StdErr>poppar OR Estimate+1.96*StdErr<poppar THEN coverage=0; ELSE coverage=1;
        Var=StdErr**2;
        bias=Estimate-poppar;
        SqErr=bias**2;
RUN;
* only converged models;
PROC SORT DATA=_tmp(WHERE=(converged=1)) OUT=_tmp_sorted; BY Par;
PROC MEANS DATA=_tmp_sorted NOPRINT;
        OUTPUT OUT=_tmp2 N(converged)=nconv MEAN(var bias SqErr coverage rel_eap_true)=;
BY Par;
DATA %LEFT(results.n%LEFT(&_nobs_)_k%LEFT(&_kitems_)_M0aggr); SET _tmp2;
        SD=SQRT(var); RMSE=SQRT(SqErr);
        IF Par IN ("a", "d") THEN converged=nconv/(&_kitems_*&_replicates_);
        ELSE converged=nconv;
TITLE "%LEFT(results.n%LEFT(&_nobs_)_k%LEFT(&_kitems_)_M0)";
PROC PRINT DATA=%LEFT(results.n%LEFT(&_nobs_)_k%LEFT(&_kitems_)_M0aggr);
RUN;
TITLE;

%MACRO results(datset);
        DATA _tmp _tmp_sorted _tmp2 _tmp3; SET _NULL_;
        PROC SORT DATA=%datset; BY rep _NAME_;
        DATA _tmp; MERGE %datset Itempar; BY rep _NAME_;
        IF CredibleLower>poppar OR CredibleUpper<poppar THEN coverCredible=0; ELSE coverCredible=1;
        IF HPDLower>poppar OR HPDUpper<poppar THEN coverHPD=0; ELSE coverHPD=1;
        Var=StdDev**2;

```

```

        bias=Estimate-poppar;
        SqErr=bias**2;

RUN;

DATA &dataset.poppar; SET _tmp;
* only converged models;
PROC SORT DATA=_tmp (WHERE=(converged=1)) OUT=_tmp_sorted; BY Par;
PROC MEANS DATA=_tmp_sorted NOPRINT;
        OUTPUT OUT=_tmp2 N(converged)=nconv MEAN(var bias SqErr coverCredible coverHPD iterations time rel_eap_dim1
rel_eap_true cover_eap)=;
        BY Par;
DATA &dataset.aggr; SET _tmp2;
        SD=SQRT(var); RMSE=SQRT(SqErr);
        IF Par IN ("a", "d") THEN converged=nconv/(&_kitems_*&_replicates_);
        ELSE converged=nconv;
TITLE "%TRIM(&dataset)";
PROC PRINT DATA=&dataset.aggr;
RUN;
TITLE;

%MEND;

%results(%STR(%LEFT(results.n%LEFT(&_nobs_)_k%LEFT(&_kitems_)_M1)));
%results(%STR(%LEFT(results.n%LEFT(&_nobs_)_k%LEFT(&_kitems_)_M2)));
%results(%STR(%LEFT(results.n%LEFT(&_nobs_)_k%LEFT(&_kitems_)_M3)));
%results(%STR(%LEFT(results.n%LEFT(&_nobs_)_k%LEFT(&_kitems_)_M4)));

OPTIONS NOTES;

%MEND;
%MonteCarlo(_replicates_ =100, _nobs_ =500,
        _maxnmc_ =5E4, _nbi_ =1E3, _thin_ =1, _ESSconv_ =0, _PSRconv_ =1.1, _iterationsteps_ =2500,
        _maxtune_ =0, _ntu_ =500, _hmaxtune_ =100, _hntu_ =500);

* Note: For n = 100 and n = 50 _nbi_ =5E3, _iterationsteps_ =5E3;
%MonteCarlo(_replicates_ =100, _nobs_ =100,
        _maxnmc_ =5E4, _nbi_ =5E3, _thin_ =1, _ESSconv_ =0, _PSRconv_ =1.1, _iterationsteps_ =5E3,
        _maxtune_ =0, _ntu_ =500, _hmaxtune_ =100, _hntu_ =500);

%MonteCarlo(_replicates_ =100, _nobs_ =50,
        _maxnmc_ =5E4, _nbi_ =5E3, _thin_ =1, _ESSconv_ =0, _PSRconv_ =1.1, _iterationsteps_ =5E3,
        _maxtune_ =0, _ntu_ =500, _hmaxtune_ =100, _hntu_ =500);

```

Funding Open Access funding enabled and organized by Projekt DEAL.

Declarations

Conflicts of interest The authors have no conflicts of interest to declare that are relevant to the content of this article.

Open practice statement The SAS code used to generate and analyze the data for the simulation study are included in Appendix C.

Open Access This article is licensed under a Creative Commons Attribution 4.0 International License, which permits use, sharing, adaptation, distribution and reproduction in any medium or format, as long as you give appropriate credit to the original author(s) and the source, provide a link to the Creative Commons licence, and indicate if changes were made. The images or other third party material in this article are included in the article's Creative Commons licence, unless indicated otherwise in a credit line to the material. If material is not included in the article's Creative Commons licence and your intended use is not permitted by statutory regulation or exceeds the permitted use, you will need to obtain permission directly from the copyright holder. To view a copy of this licence, visit <http://creativecommons.org/licenses/by/4.0/>.

References

- Adams, R. J., Wilson, M., & Wu, M. (1997). Multilevel item response models: An approach to errors in variables regression. *Journal of Educational and Behavioral Statistics*, 22(1), 47–76. <https://doi.org/10.3102/10769986022001047>
- Ames, A. J., & Samonte, K. (2015). Using SAS PROC MCMC for item response theory models. *Educational and Psychological Measurement*, 75(4), 585–609. <https://doi.org/10.1177/0013164414551411>
- Andrich, D. (1982). An index of person separation in latent trait theory, the traditional KR-20 index, and the Guttman scale response pattern. *Educational Research and Perspectives*, 9(1), 95–104.
- Asparouhov, T., & Muthén, B. (2010). *Bayesian analysis using Mplus: Technical implementation* [Mplus Technical Report]. Retrieved September 17, 2021, from <http://statmodel.com/download/Bayes3.pdf>. Accessed 17 Sept 2021.
- Carpenter, B., Gelman, A., Hoffman, M. D., Lee, D., Goodrich, B., Betancourt, M., Brubaker, M., Guo, J., Li, P., & Riddell, A. (2017). Stan: A probabilistic programming language. *Journal of Statistical Software*, 76(1), 1–32. <https://doi.org/10.18637/jss.v076.i01>
- Chalmers, R. P. (2012). mirt: A multidimensional item response theory package for the R environment. *Journal of Statistical Software*, 48(6), 1–29. <https://doi.org/10.18637/jss.v048.i06>
- Choi, Y.-J., & Asilkalkan, A. (2019). R packages for item response theory analysis: Descriptions and features. *Measurement: Interdisciplinary Research and Perspectives*, 17(3), 168–175. <https://doi.org/10.1080/15366367.2019.1586404>
- Congdon, P. (2006). *Bayesian statistical modelling* (2nd ed.). John Wiley & Sons.
- Dierendonck, C., de Chambrier, A.-F., Fagnant, A., Luxembourger, C., Tinnes-Vigne, M., & Poncelet, D. (2021). Investigating the dimensionality of early numeracy using the bifactor exploratory structural equation modeling framework. *Frontiers in Psychology*, 12(2195). <https://doi.org/10.3389/fpsyg.2021.680124>
- DiTrapani, J., Rockwood, N., & Jeon, M. (2018). IRT in SPSS using the SPIRIT macro. *Applied Psychological Measurement*, 42(2), 173–174. <https://doi.org/10.1177/0146621617733956>
- Fujimoto, K. A., & Falk, C. F. (2024). The accuracy of Bayesian model fit indices in selecting among multidimensional item response theory models. *Educational and Psychological Measurement*, 0(0). <https://doi.org/10.1177/00131644231165520>
- Fujimoto, K. A., & Neugebauer, S. R. (2020). A general Bayesian multidimensional item response theory model for small and large samples. *Educational and Psychological Measurement*, 80(4), 665–694. <https://doi.org/10.1177/0013164419891205>
- Garnier-Villarreal, M., Merkle, E. C., & Magnus, B. E. (2021). Between-item multidimensional IRT: How far can the estimation methods go? *Psych*, 3(3), 404–421. <https://doi.org/10.3390/psych3030029>
- Geisser, S., & Eddy, W. F. (1979). A predictive approach to model selection. *Journal of the American Statistical Association*, 74(365), 153–160. <https://doi.org/10.1080/01621459.1979.10481632>
- Gelman, A., & Rubin, D. B. (1992). Inference from iterative simulation using multiple sequences. *Statistical Science*, 7(4), 457–472. <https://doi.org/10.1214/ss/1177011136>
- Geyer, C. J. (1992). Practical Markov chain Monte Carlo. *Statistical Science*, 7(4), 473–483.
- Gilholm, P., Mengersen, K., & Thompson, H. (2021). Bayesian hierarchical multidimensional item response modeling of small sample, sparse data for personalized developmental surveillance. *Educational and Psychological Measurement*, 81(5), 936–956. <https://doi.org/10.1177/0013164420987582>
- Glockner-Rist, A., & Hoijtink, H. (2003). The best of both worlds: Factor analysis of dichotomous data using item response theory and structural equation modeling. *Structural Equation Modeling: A Multidisciplinary Journal*, 10(4), 544–565. https://doi.org/10.1207/S15328007SEM1004_4
- Goodman, L. A. (1960). On the exact variance of products. *Journal of the American Statistical Association*, 55(292), 708–713. <https://doi.org/10.2307/2281592>
- Hecht, M., Gische, C., Vogel, D., & Zitzmann, S. (2020). Integrating out nuisance parameters for computationally more efficient Bayesian estimation – An illustration and tutorial. *Structural Equation Modeling: A Multidisciplinary Journal*, 27(3), 483–493. <https://doi.org/10.1080/10705511.2019.1647432>
- Hecht, M., Weirich, S., & Zitzmann, S. (2021). Comparing the MCMC efficiency of JAGS and Stan for the multi-level intercept-only model in the covariance- and mean-based and classic parametrization. *Psych*, 3(4), 751–779. <https://doi.org/10.3390/psych3040048>
- Hecht, M., & Zitzmann, S. (2020). A computationally more efficient Bayesian approach for estimating continuous-time models. *Structural Equation Modeling: A Multidisciplinary Journal*, 27(6), 829–840. <https://doi.org/10.1080/10705511.2020.1719107>
- IBM Corp. (2019). *IBM SPSS Statistics for Windows, Version 26*. IBM Corp.
- Kass, R. E., Carlin, B. P., Gelman, A., & Neal, R. M. (1998). Markov Chain Monte Carlo in practice: A roundtable discussion. *The American Statistician*, 52(2), 93–100. <https://doi.org/10.2307/2685466>
- König, C., Spoden, C., & Frey, A. (2020). An optimized Bayesian hierarchical two-parameter logistic model for small-sample item calibration. *Applied Psychological Measurement*, 44(4), 311–326. <https://doi.org/10.1177/0146621619893786>
- König, C., Spoden, C., & Frey, A. (2022). Robustness of the performance of the optimized hierarchical two-parameter logistic IRT model for small-sample item calibration. *Behavior Research Methods*. <https://doi.org/10.3758/s13428-022-02000-5>
- Link, W. A., & Eaton, M. J. (2012). On thinning of chains in MCMC. *Methods in Ecology and Evolution*, 3(1), 112–115. <https://doi.org/10.1111/j.2041-210X.2011.00131.x>
- Liu, Y., & Yang, J. S. (2018). Interval estimation of latent variable scores in item response theory. *Journal of Educational and*

- Behavioral Statistics*, 43(3), 259–285. <https://doi.org/10.3102/1076998617732764>
- Martin, M. O., von Davier, M., & Mullis, I. V. S. (Eds.). (2020). *Methods and Procedures: TIMSS 2019 Technical Report*. TIMSS & PIRLS International Study Center, Lynch School of Education and Human Development, Boston College and International Association for the Evaluation of Educational Achievement (IEA).
- Merkle, E. C., Fitzsimmons, E., Uanhoro, J., & Goodrich, B. (2021). Efficient Bayesian structural equation modeling in Stan. *Journal of Statistical Software*, 100(6), 1–22. <https://doi.org/10.18637/jss.v100.i06>
- Mislevy, R. J., Beaton, A. E., Kaplan, B., & Sheehan, K. M. (1992). Estimating population characteristics from sparse matrix samples of item responses. *Journal of Educational Measurement*, 29(2), 133–161. <https://doi.org/10.2307/1434599>
- Monroe, S. (2021). Testing latent variable distribution fit in IRT using posterior residuals. *Journal of Educational and Behavioral Statistics*, 46(3), 374–398. <https://doi.org/10.3102/1076998620953764>
- Muthén, B. O. (2002). Beyond SEM: General latent variable modeling. *Behaviormetrika*, 29(1), 81–117. <https://doi.org/10.2333/bhmk.29.81>
- Organization for Economic Co-Operation and Development. (2016). *PISA 2015 technical report*. OECD. Retrieved September 3, 2021, from <https://www.oecd.org/pisa/data/2015-technical-report/>. Accessed 3 Sept 2021.
- Pohl, S., Gräfe, L., & Rose, N. (2014). Dealing with omitted and not-reached items in competence tests: Evaluating approaches accounting for missing responses in item response theory models. *Educational and Psychological Measurement*, 74(3), 423–452. <https://doi.org/10.1177/0013164413504926>
- Reckase, M. D. (2009). *Multidimensional item response theory*. Springer.
- Robitzsch, A. (2021). On the treatment of missing item responses in educational large-scale assessment data: An illustrative simulation study and a case study using PISA 2018 mathematics data. *European Journal of Investigation in Health, Psychology and Education*, 11(4), 1653–1687. <https://doi.org/10.3390/ejihpe11040117>
- Robitzsch A, Kiefer T, Wu M (2024). *TAM: Test Analysis Modules. R package version 4.2-21*. <https://CRAN.Rproject.org/package=TAM>. Accessed 14 Mar 2024.
- Rose, N., von Davier, M., & Nagengast, B. (2016). Modeling omitted and not-reached items in IRT models. *Psychometrika*, 1–25. <https://doi.org/10.1007/s11336-016-9544-7>
- Rubin, D. B. (1976). Inference and missing data. *Biometrika*, 63(3), 581–592. <https://doi.org/10.1093/biomet/63.3.581>
- SAS Institute Inc. (2018). *SAS/STAT® 15.1 user's guide*. SAS Institute Inc.
- Sheng, Y. (2013). An empirical investigation of Bayesian hierarchical modeling with unidimensional IRT models. *Behaviormetrika*, 40(1), 19–40. <https://doi.org/10.2333/bhmk.40.19>
- Smid, S. C., McNeish, D., Miočević, M., & van de Schoot, R. (2020). Bayesian versus frequentist estimation for structural equation models in small sample contexts: A systematic review. *Structural Equation Modeling: A Multidisciplinary Journal*, 27(1), 131–161. <https://doi.org/10.1080/10705511.2019.1577140>
- Spiegelhalter, D. J., Best, N. G., Carlin, B. P., & Van Der Linde, A. (2002). Bayesian measures of model complexity and fit. *Journal of the Royal Statistical Society: Series B (Statistical Methodology)*, 64(4), 583–639. <https://doi.org/10.1111/1467-9868.00353>
- Stone, C. A., & Zhu, X. (2015). *Bayesian analysis of item response theory models using SAS*. SAS Institute Inc.
- van de Schoot, R., Winter, S. D., Ryan, O., Zondervan-Zwijnenburg, M., & Depaoli, S. (2017). A systematic review of Bayesian articles in psychology: The last 25 years. *Psychological Methods*, 22(2), 217–239. <https://doi.org/10.1037/met0000100>
- Vehtari, A., Simpson, D., Gelman, A., Yao, Y., & Gabry, J. (2022). Pareto smoothed importance sampling. *arXiv preprint arXiv:1507.02646v8*. <https://doi.org/10.48550/arXiv.1507.02646>
- Wagner, W., Hecht, M., & Zitzmann, S. (2023). A SAS macro for automated stopping of Markov chain Monte Carlo estimation in Bayesian modeling with PROC MCMC. *Psych*, 5(3), 966–982. <https://doi.org/10.3390/psych5030063>
- Watanabe, S. (2013). A widely applicable Bayesian information criterion. *Journal of Machine Learning Research*, 14(1), 867–897.
- Wu, M. L., Adams, R. J., Wilson, M. R., & Haldane, S. A. (2007). *ACER ConQuest version 2.0: Generalized item response modeling software*. ACER Press.
- Zhang, Z., & Zhao, M. (2019). Standard errors of IRT parameter scale transformation coefficients: comparison of bootstrap method, delta method, and multiple imputation method. *Journal of Educational Measurement*, 56(2), 302–330. <https://doi.org/10.1111/jedm.12210>
- Zitzmann, S., & Hecht, M. (2019). Going beyond convergence in Bayesian estimation: Why precision matters too and how to assess it. *Structural Equation Modeling*, 26(4), 646–661. <https://doi.org/10.1080/10705511.2018.1545232>
- Zitzmann, S., Lüdtke, O., Robitzsch, A., & Hecht, M. (2021). On the performance of Bayesian approaches in small samples: A comment on Smid, McNeish, Miočević, and van de Schoot (2020). *Structural Equation Modeling: A Multidisciplinary Journal*, 28(1), 40–50. <https://doi.org/10.1080/10705511.2020.1752216>
- Zitzmann, S., Weirich, S., & Hecht, M. (2021). Using the effective sample size as the stopping criterion in Markov chain Monte Carlo with the Bayes module in Mplus. *Psych*, 3(3), 336–347. <https://doi.org/10.3390/psych3030025>

Publisher's Note Springer Nature remains neutral with regard to jurisdictional claims in published maps and institutional affiliations.