

External fields for the fabrication of highly mineralized hierarchical architectures

Hortense Le Ferrand^{a)}

School of Materials Science and Engineering, Nanyang Technological University, Singapore 639977, Singapore

(Received 29 May 2018; accepted 8 August 2018)

Despite lower hardness, stiffness, and resistance to harsh environments, heavy metallic parts and soft polymer-based composites are often preferred to ceramics because they offer higher resilience. By contrast, highly mineralized biomaterials combine these properties through hierarchical and heterogeneous architecture. Reproducing these internal designs into synthetic highly mineralized materials would therefore widen their range of application. To this aim, external fields have been used to control the orientation and position of microparticles and build complex architectures. This approach is compatible with most manufacturing processes and provides large flexibility in design. Here, I present an overview of these processes and describe how they can augment the properties of the materials produced. Theoretical and experimental descriptions are detailed to determine the strengths and limitations of each technique. With this knowledge, potential areas of improvement and future research directions will lead to the creation of highly mineralized materials with unprecedented functionalities.



Hortense Le Ferrand

Dr. Hortense Le Ferrand received an Ingénieur Degree from the Ecole Supérieure de Physique et de Chimie Industrielles de la ville de Paris (ESPCI Paris, France) in 2012 and a Master Degree in Materials Science from ETH Zürich (Switzerland) in 2013. In January 2017, she graduated from ETH Zürich with a PhD in Materials Science on the magnetically driven assembly of bio-inspired multifunctional composites. Her research was awarded the ETH medal for outstanding research and the Chemistry prize from the Dimitri N. Chorafas foundation. In 2017, Dr. Le Ferrand stayed at the Department of Mechanical and Aerospace Engineering at Purdue University, Indiana, USA, to study morphing structures. Later that year, she moved to Nanyang Technological University in Singapore and joined the Center for Biomimetic Sensor Science at the Department of Materials Science and Engineering. There she studied new materials fabrication using biomolecules from squids. In January 2019, she joined the School of Mechanical and Aerospace Engineering and the School of Materials Science as an Assistant Professor at the same university. Her research focuses on the design and fabrication of materials and structures that achieve new combinations of structural and functional properties for biomedical, robotics, and aerospace applications.

I. INTRODUCTION

Ceramic materials are found in applications requiring high wear resistance, such as in the parts used for textile threads or hip joint implants, high strength and stiffness such as in knives or in the impact region of ballistic shields, or inert properties as in body implants and protective coatings in harsh and hot environments. However, ceramics are absent in most structures where resistance to multiple dynamic loadings is critical, for example, in vehicles, protection helmets, and construction materials with load-bearing capability and multiple shock resistance. Developing ceramic-based materials with superior properties could be used in vehicles

exposed to harsh environment such as for the exploration of space or deep water, as protective equipment or for new robotic applications.

In these applications, metal components are used instead of ceramics, as they can withstand deformation without catastrophically failing. In the past decades, metal parts have been replaced by carbon-reinforced composites. Replacing metal components by lightweight composites has been a long-standing focus of the automotive and aerospace industries due to the reduction in weight and thus in energy that results from this modification. However, composite materials are not yet able to fully display the properties that make metals so interesting for these applications. These properties are, among others, high mechanical strength and toughness, electrical conductivity, and resistance to high temperature. Comparison between estimated values of the

^{a)}Address all correspondence to this author.

e-mail: hortense@ntu.edu.sg

DOI: 10.1557/jmr.2018.304

maximum properties achieved by each class of materials is presented in Fig. 1(a). One approach currently explored to combine these characteristics within one material is to apply the rule of mixture and to create composites containing high amounts of ceramic reinforcements. However, the rule of mixture in particulate composites is not an adequate model for all properties. Indeed, mechanical properties such as Young's modulus or hardness follow the rule of mixtures only in dilute conditions¹ [Fig. 1(b)], whereas other properties like toughness need to be described by other physical models. Highly mineralized biomaterials, which are composite materials, exhibit enhanced mechanical properties surpassing their separated constituents by several orders of magnitude² [Fig. 1(c)].

Indeed, the endo- and exo-skeletons of most species have parts made of composite materials with inorganic

content well above 80% that display not only high mechanical performance but also multiple functions. Typically, these hard biomaterials provide the animals with either a protective shell, a structure, defense or attack appendices or grinding devices. What is unique in highly mineralized natural materials, and intrinsically correlated with their functions, is their internal hierarchical and heterogeneous microstructures. Indeed, at the microscopic scale, these materials have anisotropic crystals in the form of fibers or discs that are arranged into specific motifs, most of which are recurrent across species.³⁻⁵ These motifs, also called structural designs, are predominantly layered structures, uni- and bidirectional alignment and helicoidal arrangements. Figure 2 exemplifies some of these features from the four larger groups of highly mineralized biocomposites, namely, calcium phosphate-based as in bones and teeth,⁶ calcium

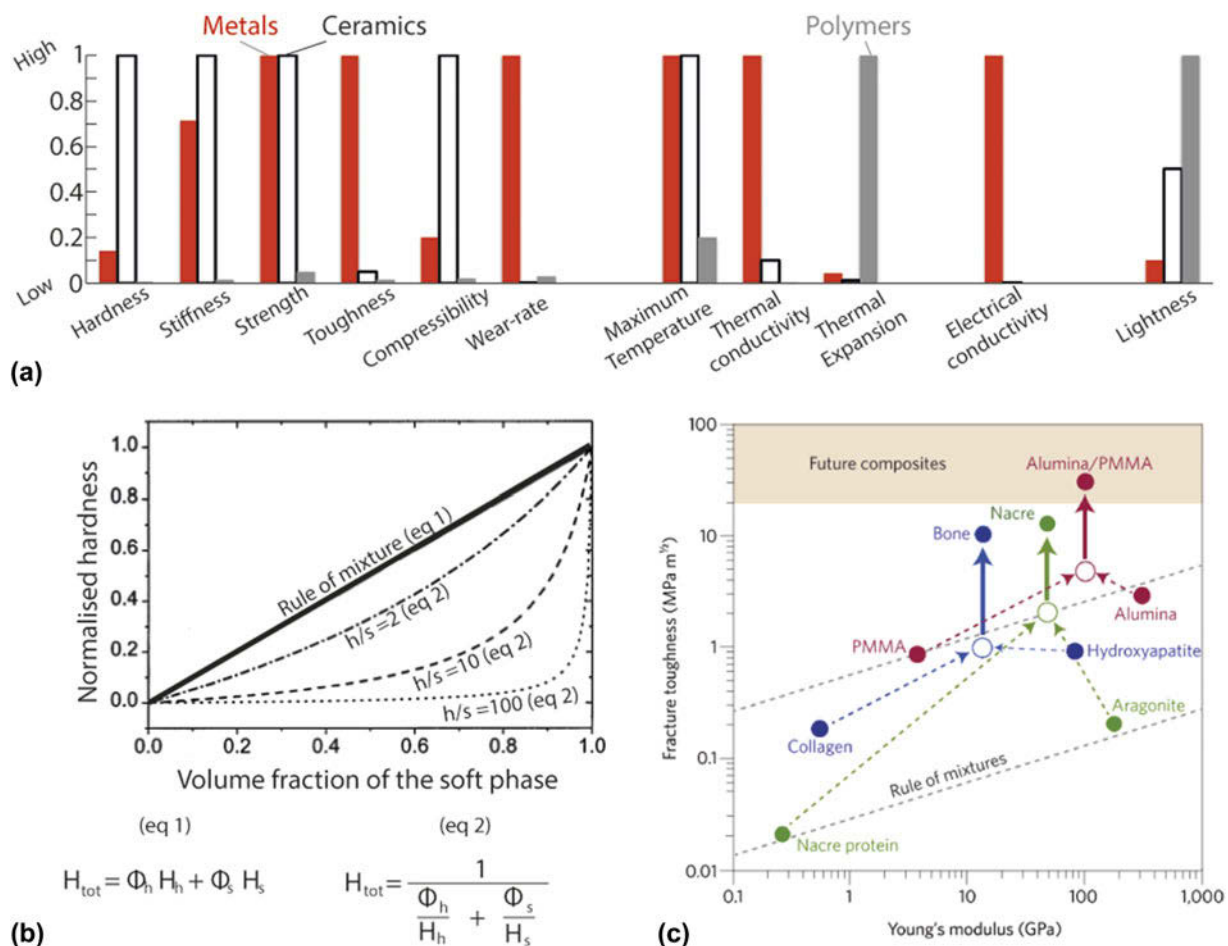


FIG. 1. Composite materials for combining properties. (a) Comparison of properties of homogeneous bulk metals, ceramics, and polymers on a scale of 0 to 1. (b) Evolution of the hardness in hard and soft composites as a function of the volume fraction ϕ_s of the soft phase. The subscripts h and s indicate the hard and soft phase, respectively. H_h/H_s is the ratio between the hardness of the two phases, written h/s in the figure. In (b) (eq 1) refers to the rule of mixture with iso-strain conditions, whereas (eq 2) refers to the isostress model¹ (copyright © 2000 Elsevier). (c) Ashby plot representing the fracture toughness as a function of the Young's modulus for biological and bio-inspired materials and their separate constituents, to emphasize the deviation from the rule of mixture in these composites² (copyright © 2014 Springer Nature).

carbonate-based as in seashells,⁷ calcium fluorapatite,^{8,9} sulfate,¹⁰ or magnetite as in some crustaceans—in particular the dactyl club of Mantis Shrimps¹⁰ and chiton teeth,¹¹ and silica-based as in the glass spicules of sponges and diatoms^{12,13} [Fig. 2(A)]. All these animals present a hard shell or structure composed of a layered arrangement of mineral crystals [Fig. 2(B)]. Along with the microscopic structure, these materials display a macroscopic geometry and a chemical composition that are not left to chance, but that also exhibit typical features

like chemical gradient or aerodynamic shape [Fig. 2(C)]. Structural properties resulting from these hierarchical structures usually combine high elastic modulus with high toughness [Fig. 2(D)]. These two properties are mutually exclusive in most synthetic ceramic–polymer composites due to the lack of microstructuring, as illustrated in Fig. 1(a).

Beyond pure mechanics, hierarchical structures also enable the implementation of multiple functions. First, due to their high strength and toughness, the overall

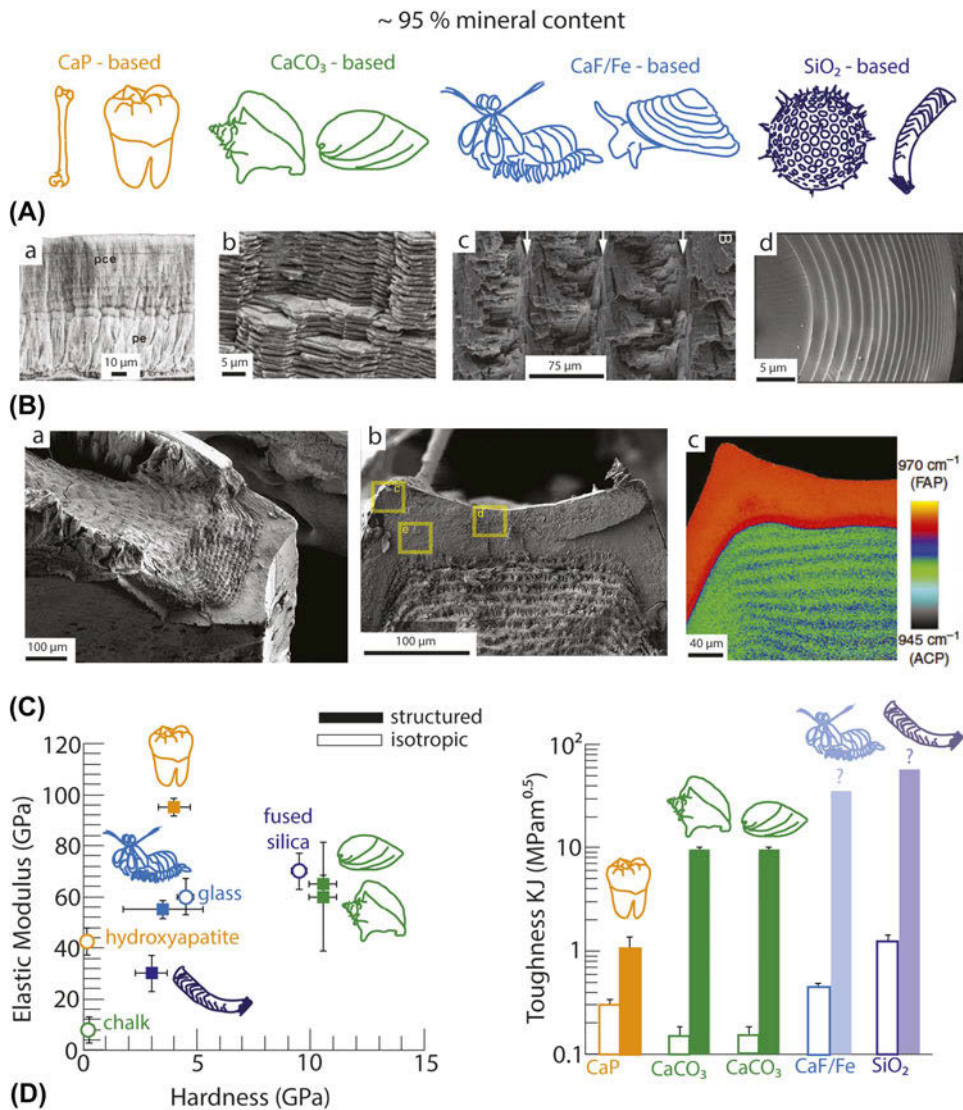


FIG. 2. The four main groups of highly mineralized biomaterials (A) and examples of recurrent microstructures (B): (a) layered organization of human teeth with hard outer enamel layer consisting of vertically aligned apatite rods and a softer dentin with horizontally aligned crystals⁶ (copyright © 1999 John Wiley and Sons); (b) brick-and-mortar arrangement of aragonite (CaCO₃) tablets in the nacreous layer of mussels²⁴ (copyright © 2012 Elsevier Ltd); (c) helicoidal orientations of mineral rods into a Bouligand structure with decreasing pitch from the dactyl club of stomatopods³¹ (copyright © 2015 Acta Materialia); (d) layered structure of silica sheets in the spicules of the silica sponge Venus flower basket.¹² (copyright © 2015 AAAS) (C) (a, b, and c) Electron micrographs revealing the spatial organization of the dactyl club of the mantis shrimp and Raman map highlighting the local composition, where FAP stands for crystalline fluorapatite and ACP for amorphous calcium phosphate.¹⁰ (copyright © 2014 Springer Nature) (D) Mechanical properties of these biological families in comparison with materials of similar composition without microstructural architecture. Data for enamel,^{26,27} hydroxyapatite,^{27–29} shell nacre,^{2,21,30} conch,^{32,33} chalk,^{34,35} dactyl club,^{10,25} fluorinated glass,^{36–38} glass sponge,^{39,40} and fused silica.^{40,41}

thickness of highly mineralized microstructured materials to achieve protection and support can be significantly reduced. Porous structures that have such microstructures in the wall of their pores combine high mechanics and low weight, decreasing the energy cost for mobility. Glass sponges and trabecular bones are typical examples of such materials.^{12,14} Second, optical properties sometimes also result from the structural arrangement. This phenomenon is present in hard biomaterials under the form of structural iridescence as in the nacreous layer of seashells¹⁵ or of the optical fiber-like channelling in glass sponges' spicules.¹⁶ Furthermore, specific properties like the magnetic response of the limpet teeth¹⁷ and in the beak of some birds¹⁸ or the piezoelectricity of bones^{19,20} are allowed. Thanks to the microstructuring, these additional functions do not impede the mechanical properties. Finally, biological materials interact actively with the living cells that produce them. The synergistic effect of organized porosity and soft domains permits the diffusion of ions, nutrients, and molecules and provides the cells with signals and tools to grow and repair.

To replace the heavy metallic parts in the transport industry and to expand the field of applications of stiff and hard composites and ceramics, a viable strategy is to implement hierarchy into their structure. Recent developments have shown the potential of this path for producing stiff and hard composites enhanced with multiple properties.^{21,22} However, despite these remarkable advances, synthetic hierarchical composites still lack the level of intricacy that is so unique to natural materials.²³ The difficulty in attaining such a level of control has long been a technical challenge due to the lack of fabrication tools. However, the past decade has witnessed a boom in the development of bottom-up manufacturing techniques that can address this issue. Bottom-up assembly techniques are well suited for hierarchically structuring composites as they imitate the role of living cells that locally synthesize and deposit materials during their growth. In synthetic fabrication paths, remote external fields have been used to manipulate colloidal particles during the fabrication. Combined with multiple processes and additive manufacturing, materials with control at several length-scales have been fabricated.

The ability to create stiff, strong, but also functional materials through the incorporation of bio-inspired architectures is attractive from a scientific point of view, but also for the industry and the general public. Indeed, having evolved over thousands of years for accomplishing their functions, it can be reasonably hypothesized that the natural structures are optimal structures for the specific constraints they are submitted to. Understanding the relation between external demands and internal structures could thus serve to adapt these natural model blueprints for the design of artificial composites

submitted to relevant constraints. Furthermore, one key strategy observed in biomaterials is the spatial organization of a limited amount of widely available elements such as C, N, H, O, Fe, Ca, Mg, and P. Therefore, by reducing the chemical diversity in man-made materials, this approach can be anticipated to facilitate recycling and limit the use of rare and costly ingredients. Finally, if the structures exhibit enhanced mechanical properties while maintaining a high level of performance in other functions, the life-time of these objects will be extended. Hierarchically structuring hard and stiff materials therefore not only addresses mechanical restriction but also is likely to impact other aspects of the material's utilization. In the long run, there is hope that the processes and materials developed for this goal will contribute to a more sustainable materials' industry.

The aim of this paper is to review the recent advances in the fabrication of hierarchically structured and highly mineralized materials and their properties. This will facilitate the identification of possible pitfalls or necessary improvements to achieve the structures and goals set in this introduction. First, the pathways for reaching high mineralization in materials will be described and the stages of the processes at which controlled hierarchical structuring can be implemented will be highlighted. Then, a theoretical description of anisotropic particle manipulation with external fields will be given at the single particle level, along with the typical practical setups used. In the context of highly mineralized materials, I will then tackle the experimental constraints that are faced in the controlled manipulation of particles in concentrated suspensions. Following, I will describe some of the main methods used to achieve hierarchical and heterogeneous architectures in highly mineralized composites. These fabrication strategies will be compared in terms of flexibility in particle orientation and position, but also chemical variation and macroscopic shaping. Scale-up in time and dimensions will also be discussed to evaluate their potential for industrial production. Finally, some of the properties of these architected materials will be reported. These examples will broaden or improve our view that these new materials with unprecedented functionalities can indeed pave the way for significant changes in the manner we design devices and structures. With this knowledge, it should be possible to determine the state of the art and find out the remaining challenges for new multifunctional highly mineralized materials, and/or new processes.

II. REACHING HIGHLY MINERALIZED STRUCTURES

To determine at which step microstructuring via the application of external fields can be implemented in

a process, it is important to first be familiar with the common paths for the fabrication of highly mineralized composites and ceramics (Fig. 3). To broaden the discussion, I will tackle materials containing a minimum of 50% in volume of inorganic matter, but I will consider only bulk materials, and not surface coatings and nanofabrication.

Four major pathways exist to obtain bulk and highly mineralized materials:

(i) Mineralization by ion precipitation and crystallization onto an organic template [Fig. 3(a)]. This process displays close similarity to natural biomineralization events.

(ii) Conversion of preceramic polymers into ceramics after pyrolysis. If the shrinkage is appropriately controlled, the organic material directly transforms into a dense ceramic [Fig. 3(b)].

(iii) Densification by following a ceramic processing path where intergranular necking occurs by thermal and/or pressure-enhanced diffusion of atoms and their re-deposition on neighboring particles [Fig. 3(c)].

(iv) Mixing and consolidation by polymer composite processing. The mineral content is determined at the

initial stage by the amount of inorganic particles introduced into a liquid organic matrix that is subsequently consolidated [Fig. 3(d)].

Mineralization is used to convert an organic template into a mineral while preserving the shape and structure of the template⁴⁵ [Fig. 3(a)]. Typically, the initial organic material consists of a synthetic organic polymer or a native biological material that already possesses a hierarchical structure. This template is then left to soak in a solution containing the ions that will deposit onto it to form the mineral. Often, mineralization is enhanced by a higher temperature and can be triggered by acidic organic groups, for example, from negatively charged polymers, peptides, proteins, or amino acids.^{46,47} These molecules have the role of adsorbing the metal cations and to dictate the crystalline orientation and the shape of the minerals in predetermined ways. In some cases, the organic template is used as a scaffold for living cells to further promote mineral deposition in *in vitro* and *in vivo* conditions.⁴⁸ Despite the long time needed to convert the entire template into a bulk mineral, from days to weeks and months, the strategy has the unique advantage of

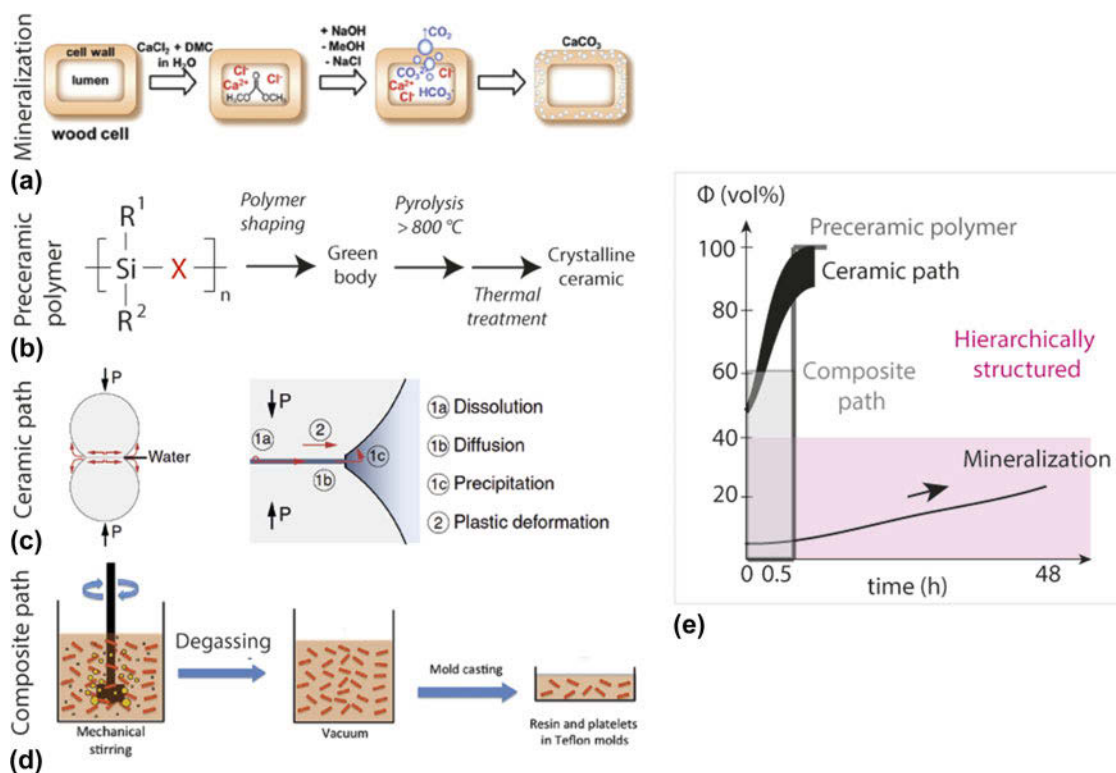


FIG. 3. Example pathways to reach high mineral content in bulk materials: mineralization on an organic template (a), preceramic polymer route (b), temperature or pressure-aided sintering (c) and composite mixing path (d). (a) Example of the mineralization of a wood cell by incubation in ionic solution⁴² (copyright © 2015 RSC). (b) Schematics of the preceramic polymer route. (c) Description of the principles of cold sintering process at ambient conditions of temperature under elevated pressure P ⁴³ (copyright © 2017 Nature Springer). (d) Fabrication of a particulate-reinforced resin by mixing, degassing, and casting⁴⁴ (Copyright © 2013, ACS). (e) Comparison of the three main routes in terms of time and mineral content. The pink area indicates where structuring through the use of external fields is possible.

preserving the microstructure initially built or encoded in the template.^{42,49} Since organic processing can be fast and highly diverse, intricate hierarchy can be already pre-designed within the matrix. In addition, slow and thermodynamically-controlled mineralization might allow for the obtention of mineral phases close to those found in natural materials.⁵⁰ Many studies show that some mineral phases, in particular, nonfavorable amorphous clusters, could play a non-negligible role in the outstanding properties of some highly mineralized biomaterials. The materials that result from this path therefore exploit the hierarchical structure from the template with the mechanical benefits from the mineralization and can combine multiple properties. One illustration is the fabrication of enhanced stiffness and fire retardancy in partially calcified wood.⁴² Finally, direct mineralization from ionic solutions is a low-energy process and a green strategy.

The use of preceramic polymers as precursors for the ceramic phase can be regarded as a faster path for the conversion of an organic template into a mineral [Fig. 3(b)]. The large majority of these precursors are silicon-based polymers with repetitive sequences of Si–C, Si–O, Si–N, or Si–N=C=N bonds.⁵¹ After pyrolysis at temperatures higher than 800 °C, these polymeric sequences convert to SiC, Si_xC_yO_z, and Si_xC_yN_z, respectively. Other matrix chemistries are obtainable by modifying the polymer precursor accordingly or by the addition of filler material or chemical additives.⁵¹ In addition, polymer degradation and mineral phase formation can lead to phase separation and chemical flux within the matrix. Despite being 100% organic at the initial stage, fully dense ceramics can be obtained by this route. This is achieved by overcoming the two major hurdles, namely, the shrinkage occurring from the degradation of the organics and the pressure built-up from gas release. Spark plasma sintering and addition of fillers are typically used to achieve 100% dense ceramics.^{52,53} Furthermore, this processing approach enables the use of polymer shaping technologies. Recent advances in 3D printing show that through this route, customized parts for micro-electromechanical systems, propulsion components, or thermal protective systems can be fabricated.⁵⁴

Densification via ceramic processing is the well-established and common pathway to reach high mineral content in bulk and controlled shapes [Fig. 3(c)]. All ceramic processing techniques start with inorganic powders that are either pressed to form a pellet ready for high temperature sintering or de-agglomerated and resuspended in an appropriate liquid to form a slurry. In this latter case, agents can be incorporated to increase or decrease the viscosity to facilitate casting into a mold, extrusion or lamination by tape-casting. All these methods are used for shaping while the powder from the slurry compacts in parallel by slow liquid removal. This

consolidation is achieved by pressing, air- or capillary-drying through the pores of a mold, coagulation by pH change or rising ionic strength, or the use of a gelling organic phase.⁵⁵ The body formed after consolidation, termed the green body, contains an assembly of powder particles with multiple contact points. These contacts are of primary importance for the necking and densification as they allow the diffusion of atoms from one particle to the other and the thickening of these necks into grains. This step, the sintering, is controlled by the heating rate and dwell temperature, typically above 1000 °C and below 2000 °C, and can be accelerated by the application of pressure and doping agents. Due to the high temperatures involved, no organic phase remains at the end of the process. To enable the infiltration of a soft phase, an interconnected porous network has to be originally programmed either by the formation of bubbles or by steric hindrance between the mineral grains restricting the compaction.^{56,57} Only recently, several studies have explored this densification process at ambient temperature in hydrated conditions and under high pressure, referred to as cold sintering. The presence of liquid under pressure enhances the dissolution and reprecipitation of ions at the neck between adjacent grains.^{43,58} In addition, depending on the degree of mineralization aimed at, care should be taken to determine the optimum conditions of sintering as internal expansion or compaction due to crystal lattice phase transformations may generate cracks. This is often observed in calcium phosphate-based ceramics.⁵⁹ Ceramic processes have been adapted to offer precise control over the macroscopic shape down to very fine details. However, the internal grain arrangement is usually random and isotropic, in the form of a homogeneous distribution of spherical grains of predictable dimensions.⁵⁹

The fourth path for obtaining highly mineralized composites is a traditional composite path where an organic matrix is reinforced by elongated fibers or particles [Fig. 3(d)]. Composites based on elongated fibers are widely used in the industry. These are prepreg composite laminates where glass fibers are embedded in a thermoset resin in the form of sheets. These sheets, or laminates, are then placed by hand into several layers with similar or varied directions of fiber orientations. Once the stack of sheets is ready, they are pressed at the temperature of curing of the polymer to consolidate the assembly. The structure obtained in these composite stacks is reminiscent of the layered bio-inspired structural design with single or multiple orientations. However, shaping and out-of-plane orientations are not permitted by this method. Therefore, the use of small size fiber or particulate reinforcements has been introduced in new formulations. Mineral oxides are particularly interesting due to their low cost, large abundance, and facile availability. In this case, the preparation of the composite

is very similar to the initial stage of the ceramic processing where particles are dispersed into a liquid phase that is subsequently casted and consolidated by other means. Finally, this describes also the initial stage of the preceramic precursor path where filling particles are added to reduce the shrinkage and the pressure build-up during the firing.

The four pathways for highly mineralized materials described here are able to offer controlled macroscopic shape [Fig. 3(e)]. Very high level of mineralization up to 100% can be obtained following the preceramic precursor and ceramic pathways, whereas the composite method has a degree of mineralization determined by the amount of particles placed into the liquid matrix at the initial stage of the process. Mineralization, on the other hand, can potentially lead to all ranges of mineralization depending on the time at which the material is removed from the ionic solution. Mixed pathways are potential solutions to combine high mineralization with short time fabrication. In this respect, a concrete example will be provided in the part 5 of this review. Furthermore, the processes described until here do not allow for microstructuring of the materials in neither directed nor programmable ways. Indeed, mineralization does provide hierarchical structures but these are commanded by the template. Preceramic polymers and fillers are homogeneously mixed to prevent anisotropic shrinkage and phase transformations during firing. Ceramic path may offer hierarchy through foaming formulations. However, the microstructures obtained strongly deviate from the examples provided in Fig. 2 as they will feature spherical pores with homogeneous distributions and orientations of grains.⁵⁶ Finally, the composite path involves mixing and casting, which are methods leading to isotropic structure of micron-sized particles unless specific phase separation occurs. However, all four high mineralization routes have a stage of low mineralization. At this stage, mineral particles are embedded in a fluid or a soft matrix and can potentially be manipulated via external fields to purposely control their orientation and position.

III. EXTERNAL FIELDS TO MANIPULATE SINGLE PARTICLES

Single particles suspended in a liquid can be manipulated in position and in orientation by the use of external fields. Spherical particles do not display orientation since they are isotropic (0-D), whereas rod-like particles can exhibit an orientation in one dimension (1-D). 2-D shaped particles, in the form of discs or obloids, have two perpendicular main axis orientations and therefore can display uniaxial or biaxial alignments. Since these 2-D particles have the largest degree of possible orientation, this case will be largely discussed in the remainder of the paper. The 1-D and 0-D particle cases can be

deduced by assuming symmetries in the system. 3-D shaped particles have infinite possibility of shapes, axis number, and orientations but are seldom available in large quantities and are less likely to be used to fabricate bulk and highly mineralized materials. Despite the evidence that such building blocks offer a large interest to yield new deformation mechanisms and properties,⁶⁰ their orientation in space will need to be considered for each individual geometry and is beyond the scope of this review.

The external fields that can be utilized to manipulate 2-D particles in space can be sorted into three families, namely, mechanical, electrical, and magnetic fields (Fig. 4). Particles can also be manipulated by optical means. In the context of highly mineralized composite processing, optical processes are hindered due to multiple scattering and opacity of suspensions at high solid loadings. The choice of field to apply will mostly be determined by the property mismatch between the particle and its medium. A difference in density would preferentially allow the use of mechanical fields, in polarization of electric fields and in magnetic susceptibility of magnetic fields. The theoretical description and setups presented in the following can be generalized to particles of all sizes. However, the description is limited here in terms of manipulation of 2-D colloidal particles that have two dimensions in the micrometer range and a third dimension in the submicrometer or nanometer range. This type of particles has the specificity of being not completely dominated by Brownian motion. This is primarily to justify that the thermal energy can be neglected in the energy balance at equilibrium.⁶² The expressions of the torques that these fields apply to anisotropic particles (Tables I and II) result from a thermodynamic argument: the particle's motion is driven by the necessity to place the particle in its minimum energy. On the other hand, the forces that the center of mass of the particle undergoes derive from the gradient of the external field. A particle exposed to a field with homogeneous strength distribution will thus only orient, while heterogeneities in the field's intensity will combine rotation with translation of the particle.⁶⁸

The experimental setups used to manipulate particles using external fields are schematized in Fig. 4. Mechanical or pressure fields are applied using gravitational forces, shear or acoustic waves [Fig. 4(a)]. 1-D vertical alignment of rods can occur during sedimentation by the combined effect of gravitational force and shear at the surface of the anisotropic particle. On the contrary, gravity leads to spontaneous 2-D horizontal alignment for disc-like particles due to their large surface area. The effect of gravity on anisotropic particles is accelerated and enhanced by increasing the density mismatch between the background fluid and the particle and for low viscosity fluids.⁷² Shear fields, spontaneously generated

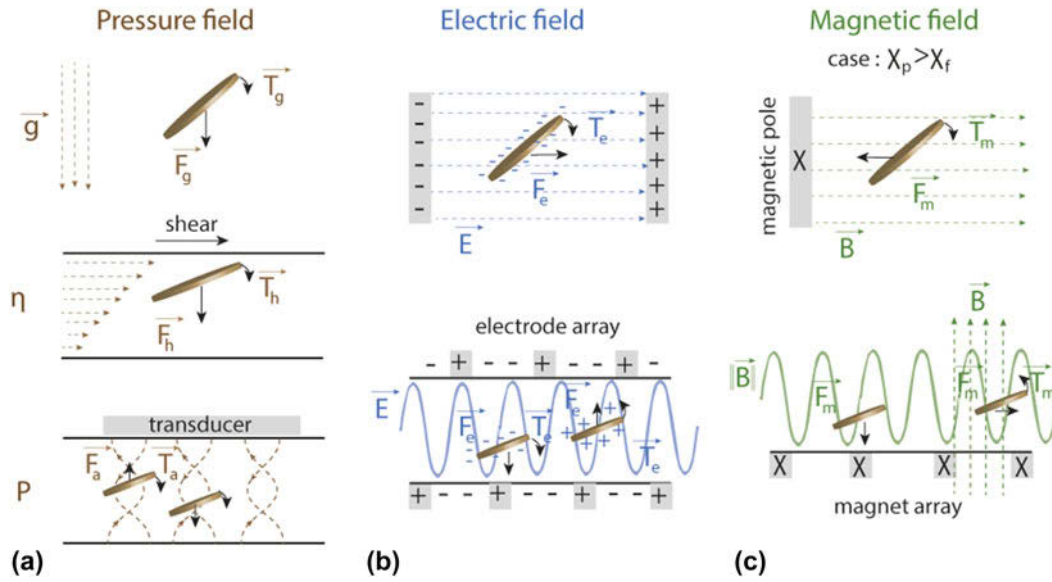


FIG. 4. Anisotropic particle manipulation by external fields: namely (a) pressure, (b) electric, and (c) magnetic fields. (a) Gravity, shear stresses, and acoustic standing waves can be used to rotate anisotropic 2-D particles via a torque T and to displace the center of mass of the particle via a force F . (b) Static electric fields can align and attract charged particles toward the electrode of other sign. Using electrode array, positively and negatively charged particles can be located selectively. (c) For particles with a magnetic susceptibility χ_p superior to that of the fluid χ_f , magnetic fields will align and orient them. Similar to the electrode array, an array of magnetic dipoles will locally align and orient particles.

TABLE I. Theoretical description of the forces and torques applied by pressure fields.

	Pressure field	
	Gravitational or shear	Acoustic
Potential energy	$U_g = V_p (\rho_p - \rho_f) g b \sin \theta$ (Refs. 61 and 62)	$U_a = 2\pi a^3 \rho_f \left(\frac{1}{3} \frac{p^2}{\rho_f^2 c_f^2} f_1 - \frac{1}{2} v^2 f_2 \right)$ (Ref. 64)
Alignment torque	$T_g = -6\eta V_p f \frac{d\theta}{dr}$ (Ref. 61) $T_h = \frac{8\pi a^3 f}{3 \ln(\frac{a}{b})} \eta \dot{\gamma} \cos^2 \theta$ (Ref. 63)	$T_a = \frac{4}{3} \rho_f a^3 v^2 \sin(2\theta)$, in the approximation $a \ll \lambda$ in a 1D standing wave (Ref. 65)
Positioning force	$F_g = V_p (\rho_p - \rho_f) g x$	$F_a = \frac{2}{3} \frac{a^3}{\lambda} \rho_f v_w^2 \frac{\delta}{\delta+1} \left(1 + \frac{\delta}{\delta+1} \frac{1}{5} \left(\frac{a}{\lambda} \right)^2 \right) \sin \frac{2x}{\lambda}$, in the approximation $a \ll \lambda$ in 1D (Ref. 65)
Ranges		10^{-12} to 10^{-11} N 10^{-18} to 10^{-16} Nm

TABLE II. Theoretical description of the forces and torques applied by electric and magnetic fields.

	Electric field	Magnetic field
Potential energy	$U_e = -\frac{V_p \epsilon_f \epsilon_0 E_0^2}{4} \text{Re} [K_{\parallel} + (K_{\perp} - K_{\parallel}) \cos^2 \theta]$ (Ref. 66)	$U_m = -\frac{V_p B_0^2}{2\mu_0} [\chi_{\parallel} - \chi_{\perp} + (\chi_{\perp} - \chi_{\parallel}) \cos^2 \theta]$ (Ref. 66)
Alignment torque	$T_e = -\frac{V_p \epsilon_f \epsilon_0 E_0^2}{4} \text{Re} [(K_{\parallel} - K_{\perp}) \sin 2\theta]$ (Ref. 66)	$T_m = \frac{V_p E_0^2}{2\mu_0} [(\chi_{\parallel} - \chi_{\perp}) \sin 2\theta]$ (Ref. 66)
Positioning force	$F_e = -\frac{V_p \epsilon_f \epsilon_0}{2} \nabla E ^2(r)$ (Ref. 70)	$F_m = -2\pi a^3 \mu_0 \frac{\chi_p - \chi_f}{\chi_p + 2\chi_f + 3} \nabla H ^2(r)$ (Ref. 68)
Ranges	10^{-14} to 10^{-11} N 10^{-20} to 10^{-18} Nm	10^{-13} to 10^{-9} N 10^{-22} to 10^{-14} Nm

during motion of particles by other pulling forces like sedimentation, can also be generated by fluid flow. At low Reynolds numbers in a small channel, i.e., for $\text{Re} = \frac{\rho_f v_f L}{\mu} \ll 1$, turbulence is negligible and streamlines parallel to the walls arise.⁷³ This type of flow will force

anisotropic micron-sized particles to align their longest dimensions in line with the flow. Couette rheological setups where a liquid is sandwiched between a static plate and a mobile plate give rise to this type of laminar flow. Extrusion through a pipe or the spreading of a liquid or

paste with a doctor-blade, method called tape-casting, generates laminar flows with horizontal and parallel streamlines as well.⁷⁴ Mechanical external fields by acoustic pressure waves are used to simultaneously

control particle position and orientation. This is realized by propagating a pressure wave generated by a piezoelectric actuator working at frequency from 1 to 50 MHz in a cavity of defined dimensions⁶⁴ [Fig. 5(A)]. When the

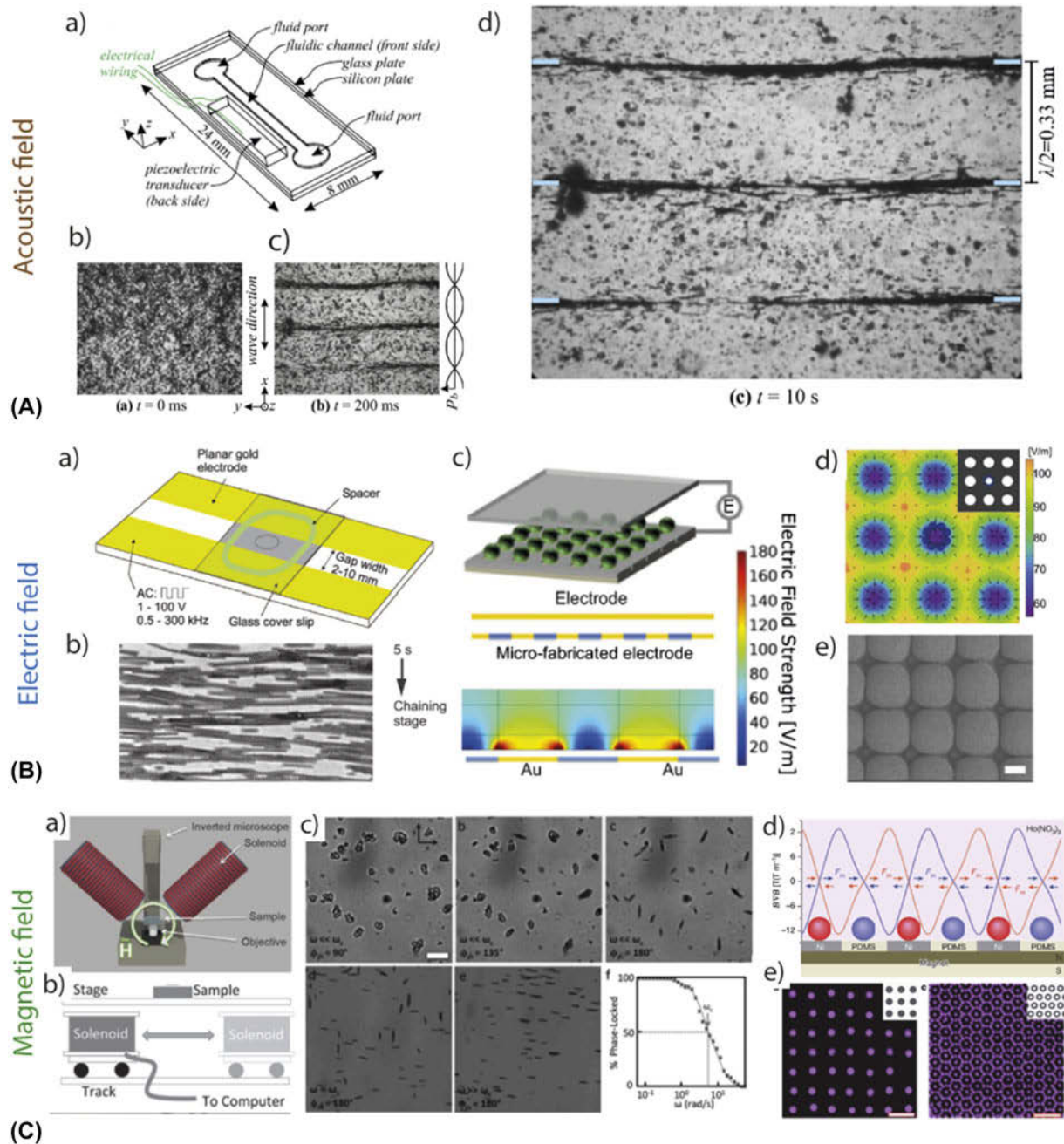


FIG. 5. Examples of experimental set-ups to manipulate particles in dilute suspensions via external fields. (A) (a) Acoustic waves generated by a piezoelectric actuator can create a standing pressure wave in a channel of finite dimensions; (b–d) Anisotropic particles suspended in the channel will orient and concentrate at the pressure nodes of the wave⁶⁴ (Copyright © 2015 ASA). (B) (a and b) AC electric fields generated by applying an AC voltage will orient anisotropic particles along the field lines⁶⁹ (copyright © 2009 RSC); (c–e) arrays of electrodes alternate the electric field strength in the plane and allows for the local concentration of particles in selected areas⁷⁰ (copyright © 2016 PNAS). Scale bars 20 μ m. (C) (a and b) two set-ups to create rotating magnetic fields and (c), platelets' response to rotating fields of increasing frequency of rotation showing the biaxial alignment at high frequency, scale bar 20 μ m^{61,71} (copyright © 2012 RSC, copyright © 2013 RSC); (d and e) arrays of magnetic dipoles in the form of virtual magnetic mold is used to concentrate magnetic and nonmagnetic particles at specific areas in the plane⁶⁸ (copyright © 2013, Springer Nature). Scale bars 10 μ m.

wave travels through the cavity, it is reflected at the wall on the other side and travels backwards, where it is reflected again at the other cavity wall. There is a specific frequency of the piezoelectric excitation at which the pressure waves traveling in the suspension in the channel will superimpose and cancel each other at distances proportional to the wave length. These points are the pressure nodes. By contrast, the waves will supplement each other at other distances, the pressure anti-nodes. In the channel, this will be equivalent to having a static single wave and this is therefore called a standing wave. When this arises, the particle's center of mass will be attracted to the pressure nodes and orient perpendicular to the waves [Fig. 5(B)]. Varying the cuvette geometry, the piezoelectric stimulator frequency and the amplitude allows for the generation of programmable patterns of pressure nodes and antinodes and therefore for controllable position and orientation of anisotropic particles in 3 dimensions.⁷⁵

Electric fields are generated by applying a voltage between two electrodes deposited at the edge of a dielectric material such as an organic soft matrix or a liquid. When polarized or polarizable particles are present in this dielectric, they will respond to the field by aligning along the streamlines and migrating towards the electrode of opposite polarity. A convenient way to polarize mineral particles is to suspend them in a water-based liquid where surface charges emerge. The surface charge of the particles will result from the exchange of ions and electrons with the surrounding water in the Debye layer. The surface charge can be controlled and modified by adjusting the pH of the solution, the ionic strength, or by employing charged surfactant molecules that will adsorb onto the surface of the particles. When applying a DC electric field to an aqueous solution, electro-osmotic effects will lead to the migration of the charged components dispersed in the liquid, meaning the particles and also the surrounding ionic constituents. To avoid this flow and maintain a homogeneous concentration of ions in the suspension, AC fields at frequencies between 50 kHz and 1 MHz are necessary.^{69,70} Under these conditions, anisotropic particles, with homogeneous charge, will align their long axis along the field direction [Fig. 5(C)]. In addition, the particles surface charge is likely to fluctuate to form an electrical dipole. When this occurs, particle chains parallel to the field lines form in the liquid.⁷⁶ To control the positioning of particles in complex patterns, arrays of positive and negative electrodes can be used to modulate the electric field strength in 2-D and in 3-D. In this case, positively charged components will be dragged toward the negative electrodes while the negatively charged components will be attracted to the positive ones⁷⁰ [Fig. 5(D)].

Magnetic fields can be produced by permanent magnets, with a range from 3 mT (fridge magnet) to 1 T for $10 \times 10 \times 10 \text{ cm}^3$ large rare-earth magnets, or from

electromagnets. Electromagnets are electric coils that can generate magnetic fields from 0.1 mT up to 45 T for super- and superconductive electromagnets with helium cooling. Without demanding cooling and intense electric fields, traditional electromagnets of diameter 9 cm and length 10 cm achieve 10–300 mT over an area of $10 \times 10 \text{ cm}^2$ under 10 mA. In addition, magnets have a south and a north pole. The field lines of each magnet, linking the two poles, are therefore highly dependent on the magnet's geometry. In the case of electromagnets, the field within the coil has the advantage to be highly homogeneous with parallel lines of similar magnetic strength at the core of the coil. When a particle has a magnetic susceptibility different from that of its surroundings, it will align along the field lines and be attracted to the opposite pole, similarly to what is observed in electric fields. Since every atom possesses electrons and thus a magnetic spin, all matter can align with a magnetic field.^{77,78} However, the strength required might be enormous and call for superconducting magnets. To be able to use standard magnets with mild field strength, it might be necessary to modify the chemistry of the particle. Inorganic materials with low magnetic susceptibility can be coated with a thin layer of ferromagnetic material such as iron oxide.⁷⁹ Another strategy commonly used is to physically adsorb superparamagnetic iron oxide nanoparticles (SPIONs) onto the surface.⁶² These nanoparticles, below 20 nm in diameter, are constituted of only one single magnetic domain and consequently respond ultra rapidly to magnetic fields. As commented earlier, 1-D microparticles can easily align their longest dimensions with the 1-D field lines. To align 2-D microparticles biaxially, it is necessary to apply a 2-D field. In the case of magnetic fields, this can be created by rotating the magnet or the sample above a critical frequency f_c .^{61,71} Indeed, for $f < f_c$, the 2-D particle will rotate along with the field at the same frequency f . However, at $f > f_c$, it is more energetically favorable for the particle to remain in the same position, aligned in the plane of rotation of the magnetic field, than to rotate and drag a lot of fluid at each rotation [Fig. 5(E)]. In the case of inorganic 2-D particles coated with SPIONs of diameter d , $f_c = \frac{\mu_0 \chi_p^2 H^2}{18f\eta(\chi_p+1)} \left[\frac{(a+d)(b+d)^2}{ab^2} - 1 \right]$.^{61,71} Furthermore, similar to electric fields, particles of high magnetic susceptibility will be attracted toward areas of high magnetic fields. The spatial modulation of the magnetic field strength can thus be controlled by fabricating arrays of magnets⁸⁰ or via the use of virtual magnets where a ferromagnetic pattern will serve to concentrate and localize the magnetic field^{68,81} [Fig. 5(F)]. Finally, magnetic dipoles can also form in particles with ferro- and ferrimagnetic properties, leading to the formation of unidirectional chains parallel to the magnetic field lines.⁸²

IV. MANIPULATION OF PARTICLES IN CONCENTRATED SUSPENSIONS FOR HIGH MINERALIZATION

External fields allow for the manipulation in orientation and position of particles in a liquid. In concentrated suspensions, however, interparticle interactions might hinder the manipulation (Fig. 6). First, I will comment on the design freedom enabled by these external fields at the single particle level and extend the discussion to highly loaded particle suspensions. Then, I will discuss the experimental requirements for achieving mineralized materials with organized microstructure.

From the above discussion, mechanical fields do not require functionalizing or chemically varying the particle composition if the strength applied is sufficiently high. However, it should be repeated that it is the mismatch between the properties of the particles and their surrounding fluid that enables the manipulation. Therefore, it is equally viable to modify the chemistry of the fluid or of the particle to manipulate any micron size object with an external field. To compare the potential of each external field to manipulate micron-sized inorganic particles, I compare the control in orientation and in position for 2-D disc-like particles. All fields are able to orient particles in the direction of the field. In the case of gravitation and shear, this alignment is primarily horizontal for 2-D particles, whereas it can be horizontal and vertical for 1-D electric and 1-D magnetic fields. Biaxial alignment is realized horizontally in gravitational and shear fields due to the 2-D geometry, and vertically in acoustic fields. In 2-D magnetic fields, generated by rotating magnets, the biaxial alignment can be in any direction. Similarly, perpendicular pairs of electrodes can create 2-D electric fields to orient sheet materials in space.⁸³ Furthermore, the control of the position of the center of mass of the particles is achieved in all strategies by spatially varying the strength of the field. To conclude, it is remarkable that this manipulation is determined only by the difference between the intrinsic properties of the particles and the

fluid. Therefore, it is also possible to manipulate mixtures of particles with different chemistry, shapes, and dimensions within the same external field.⁶⁸ In some particular cases, it might even be beneficial to couple different external fields to have access to an even greater range of design freedom.^{63,70,84} For example, 2D vertical alignment of discs can be realized by combining 1D electric field with a perpendicular 1D magnetic field.⁶⁶

To create composite materials with significant mineral content, the manipulation of the particles has to take place already in concentrated suspensions [Fig. 3(d)]. With the exception of magnetic fields with ultra high strength that are able to orient ceramic grains by providing the atoms with an energy higher than their thermal energy,^{77,78} for aligning particles, it is necessary for each individual particle to have the possibility to rotate and move. Therefore, at the stage where the external field is applied, the radii of gyration of the particles should not overlap. Fig. 6 shows the degree of freedom (DoF) enabled by the external fields as a function of the volume fraction of suspended particles. To draw a meaningful comparison, 2-D particles of aspect ratio around 40 that have been largely used in the literature are considered.^{64,67,71,85} It is expected that particles with larger aspect ratios exhibit similar trends at lower volume fractions. Indeed, the viscosity of the system, the major hurdle, increases drastically with the aspect ratio. The particles are also required to be well-dispersed and without attractive interactions that might destabilize the suspension. With this in mind, acoustic orientation and positioning is hindered above volume fractions of around 10 vol%.⁶⁴ Indeed, the increase in solid loading increases the number of liquid-particle interfaces that scatter the acoustic wave. The suspension therefore becomes “acoustically opaque” as the concentration of particles increases. Acoustic streaming or simply absence of ordering are manifestations of this phenomenon. Electric fields, pressure fields from gravity or shear, and magnetic fields of low strengths are limited by the increase in

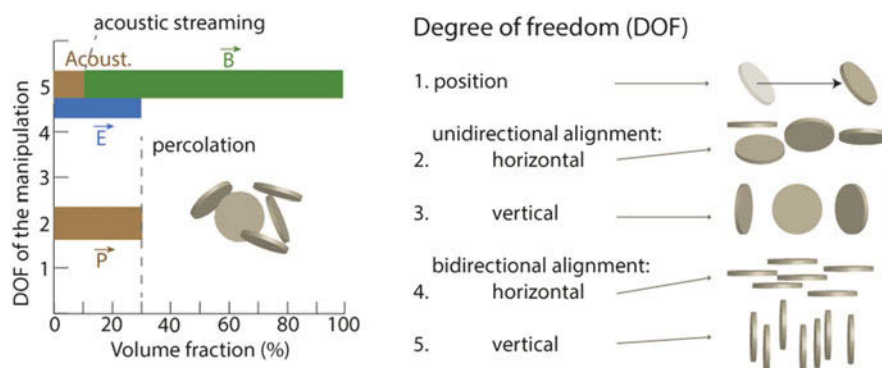


FIG. 6. Comparison of the DOF for each external field applied to a suspension of disc-like particles, namely pressure \vec{P} , electric \vec{E} , and magnetic \vec{B} , as a function of the volume fraction of particles to manipulate.

viscosity that accompanies the increase in volume fraction. The percolation of colloidal particles past a certain concentration threshold forms a jammed network where collision and short-range attraction prevent the motion of single particles. This threshold will depend on the aspect ratio of the particles and can be tuned by controlling the electrostatic repulsion between the particles. Unstable colloidal suspension and attraction between the particles would indeed lower drastically the threshold. To a certain extent, the system can be artificially unjammed by the application of another mechanical field via vibrations.⁴⁴ The case of shear-induced alignment also deserves more attention as shear is often more efficient in an optimal concentration range. If the concentration of particles is too low, the thick layer of liquid separating the plane of external shear and the particle will dissipate the energy. As a result, there will not be any transfer of stress and strain to the particle and no alignment will be seen. By contrast, too high concentration, yet below the jamming, might be driven to a jammed state upon application of a shear.⁸⁶ The suspension will thus exhibit a shear-thickening effect, probably caused by hard collisions of particles under motion.

Finally, one last requirement to obtain a highly mineralized material with orientation and position control is to maintain the microstructure as the material densifies. Indeed, the forces involved during densification, for example, from external pressure or capillary forces, might overcome the forces from the external fields and modify the microstructural arrangement. If the strategy adopted follows the composite path [Fig. 3(c)], the curing and setting of the matrix at the end of the manipulation will be sufficient to consolidate the structure without disturbing the alignment. The use of thermosetting polymers is particularly suited in this case as the solution of monomers is initially liquid, permitting the manipulation, and increases in viscosity as the curing occurs. Temperatures below 60 °C are compatible with electric, magnetic, and mechanical fields. Above 60 °C, electrodes might behave differently and the magnet might also lose its magnetization. UV-curing is another efficient way but is usually not compatible with magnetic manipulation in concentrated systems. Indeed, iron oxide and other ferromagnetic materials such as nickel or cobalt absorb in the UV. In high concentration, these elements will inhibit the polymerization. Gelling systems triggered by time through the addition of catalysts or via enzymatic reactions are also good methods to maintain the microstructure.⁹⁰ Finally, for systems where curing is triggered by the addition of chemicals and their diffusion through the matrix, the experimental set-up might require fine tuning so that the addition of the agents is slow enough and do not disturb the assembly, for example, due to turbulence. For highly mineralized materials fabricated along the ceramic path, the methods mentioned above can

be applicable for the obtention of the green body. In cases where the organic phase content is at a minimum, an optimum in concentration should be found so that the particles can be manipulated via the external fields and maintain their structure after removal of the liquid phase. To fight against capillary forces rising during drying or slip-casting, the particles should form already a dense and jammed structure once the field is removed.⁹³ This can be realized by adjusting the initial concentration to be close to the jamming threshold, or by the addition of nanoparticles that will jam quickly after removal of the field.⁸⁸ Finally, ceramic processing often uses pressure to push the mineral content to its maximum. When a ceramic green body contains a microstructure, uniaxial or isostatic pressing will lead to a denser horizontally oriented construct. To circumvent the need for external pressing, the suspension's composition can be modified to allow for grain growth and densification by temperature sintering only. This approach, called templated grain growth, relies on the preferential diffusion from small grain onto large grains.⁹² As such, mixtures of anisotropic micro-particles and spherical nanoparticles can be densified without pressure. In this scenario, the 2-D shaped particles are oriented via shear or magnetic field in a concentrated, yet liquid, suspension of nanoparticles of similar chemistry. By adding gelling agents or simply by drying, the nanoparticles will form a network that will maintain the microstructure.^{88,90} During the sintering step at a high temperature, the 2-D particles used for microstructuring will behave as a template for the nanoparticles to grow and merge with. The resulting ceramics are dense above 80% and display grain orientations in the same directions as the initial 2-D particles. In this particular case, texturation by orientation of the particles correlates with the crystallographic orientation. This occurs only when the templates display well-defined crystallographic orientation.

V. ACHIEVING HETEROGENEOUS ARCHITECTURES

External fields are powerful means to manipulate particles in liquid or in mildly concentrated suspensions. This manipulation can be coupled with established processes to achieve microstructuring, high concentrations with controllable chemistry, shape, and dimension. In the following, examples of such processes are given and their principles and some of the possible structures obtained are described. The methods discussed are tape-casting, freeze-casting, slip-casting, and 3D printing.

Layering material is a straightforward procedure to build a heterogeneous and hierarchical material (Fig. 7). Tape-casting is a method of choice as it allows control of the thickness and the application of a mechanical shear field to orient particles horizontally [Figs. 7(a) and 7(b)].

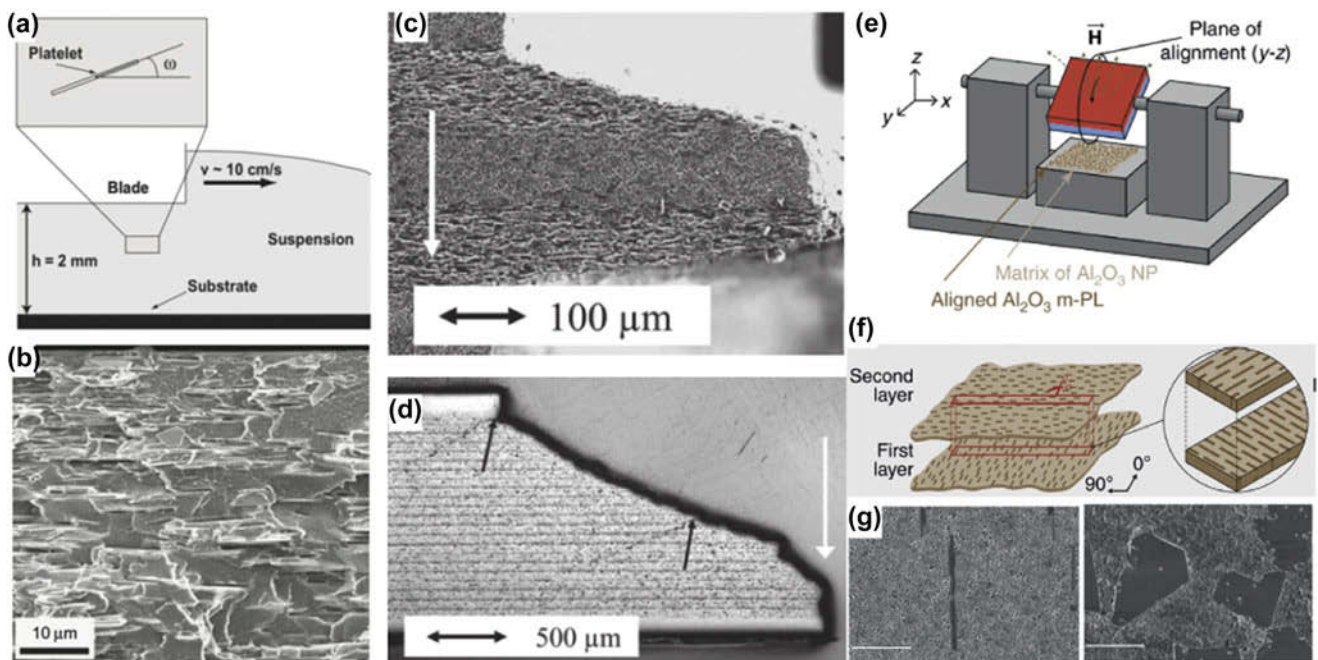


FIG. 7. External fields applied to tape-casting: (a) Schematics of the tape-casting method⁹¹ (copyright © 2009 Materials Research Society) and (b) electron micrograph of the cross section of a tape casted polymer–aluminum oxide platelet composite⁹¹ (copyright © 2009 Materials Research Society). (c and d) Polished cross sections of multilayered alumina ceramics with controlled layer thickness, density, and microstructure. The white arrow indicates the direction of the load applied and the black arrow highlight crack deflections⁹⁴ (copyright © 2016 Springer Nature). (e, f, and g) Set-up used to combine rotating magnetic field with tape-casting of ceramic bilayers with microstructure control as schematized in (f)⁹⁰ (copyright © 2016 Springer Nature). (g) Electron micrographs of cross section of the ceramic green bodies obtained with direction control of 2-D particles.⁹⁰ Scale bars are 5 μm (copyright © 2016 Springer Nature).

The method is highly flexible. Indeed the composition, structure, and density can be varied in each layer as well as the number, thickness, and sequence of layers. As such, alignment in thin layers can be achieved in composites up to 40% of 2-D particles⁹¹ [Fig. 7(b)] but also in dense ceramics.^{94,96,97} Figures 7(c) and 7(d) present polished cross section of layered alumina–aluminum oxide–ceramics with density above 90% in volume that was prepared by sequential layering of slurries containing alumina nanoparticles and alumina 2-D particles to serve as templates⁹⁴ (see part 4 for details about templating). Delamination is typically prevented by diffusion transport across the layers. This diffusion can be triggered thermally as in the case of ceramics or thermosetting matrices or via the use of solvents to locally dissolve and disentangle thermoplastic matrices. In addition to the mechanical field applied by shear during tape-casting, the method can also be combined with external fields such as magnetic fields.^{90,98} For example, by co-mixing alumina nanoparticles with alumina 2-D particles coated with SPIONs, out-of-plane alignment was successfully realized⁹⁰ [Figs. 7(e)–7(g)].

Freeze casting is a method traditionally used for the fabrication of porous materials due to the development of ice crystals in the slurry (Fig. 8). Typically, a slurry is poured into a mold that has one side in contact with a freezing temperature. Due to the temperature gradient

across the mold and with similarity to the Bridgman furnaces that leads to controlled dendrite formation in metallic alloys, elongated ice crystals form. These ice dendrites push the particles into selected areas where the high concentration and the shear from the growth generate local order^{85,95} [Fig. 8(A)]. The assembly of the particles during the growth of the ice crystals can be accurately simulated using discrete element models where polydisperse hard particles are placed in a box of finite size. Modeling the action of the shear from the growth of the crystals by reducing the distance between the two opposite walls of the box, the displacement and torques applied to the particles are calculated using the Lennard–Jones potential. In the case of anisotropic particles, their alignment, the kinetics of their assembly, and the final density match the experimental results well.⁸⁵ The freezing direction can be controlled by using several freezing reservoirs to create 2D temperature gradients and therefore modulated shearing fronts. In this case, diverse microstructures can arise within the final porous material^{99,100} [Fig. 8(B)]. Freeze-casting can also be coupled with external fields such as static or rotating magnetic fields to allow for the fabrication of highly oriented materials or highly heterogeneous yet controlled microstructures^{101,102} [Figs. 8(C) and 8(D)]. Finally, it can also be mixed with other processing routes such as

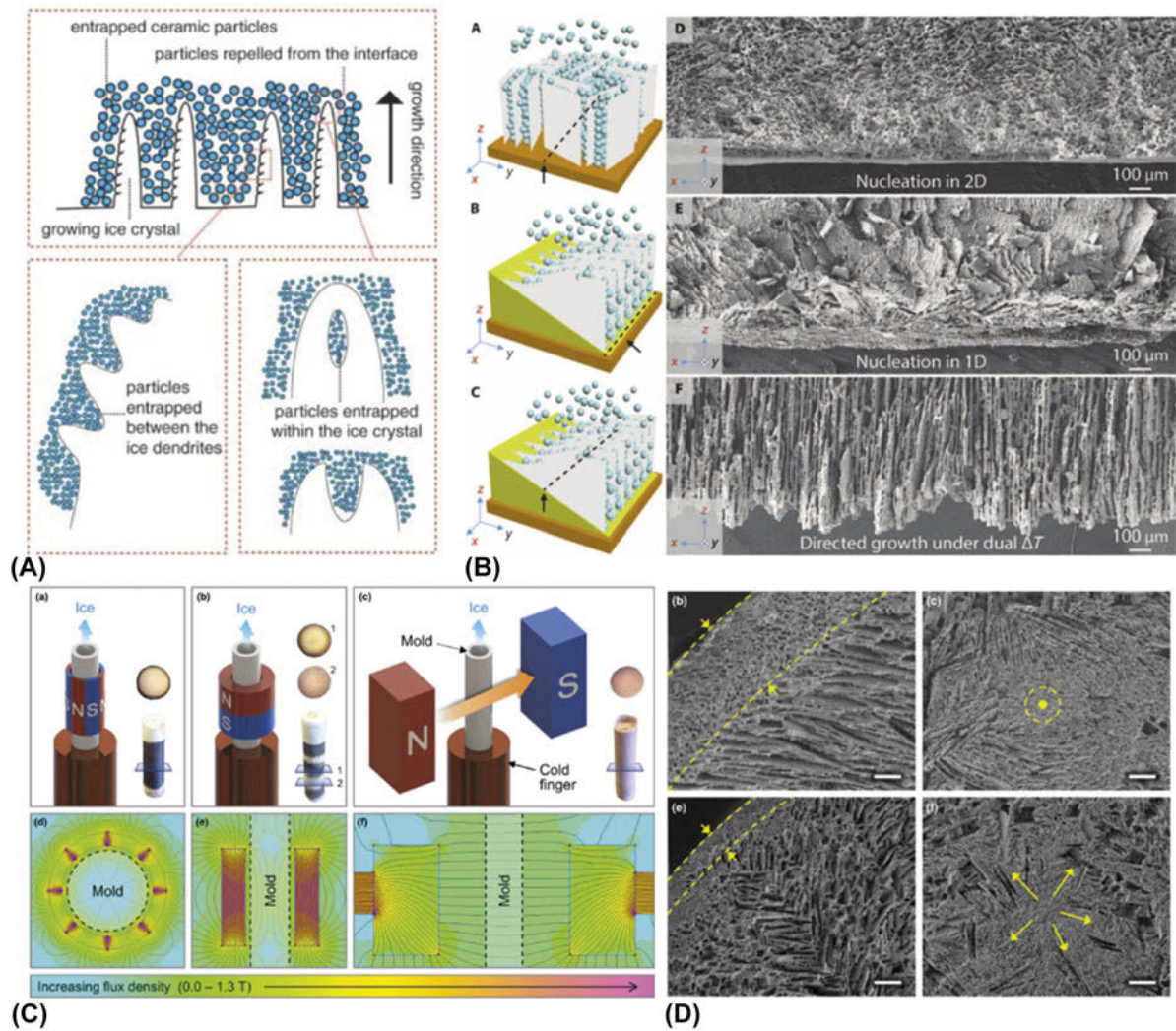


FIG. 8. External fields applied to freeze-casting. (A) Schematics of the principle of freeze-casting⁹⁵ (copyright © 2006 AAAS). (B) Schematics and electron micrographs of ordered ceramic materials under various temperature gradients⁹⁹ (copyright © 2015 AAAS). (C) Cartoons and finite element models of freeze casting with external magnetic fields in several designs and (D) the microstructures obtained¹⁰¹ (copyright © 2016 John Wiley and Sons). Scale bars are 200 μm .

tape-casting¹⁰³ and extrusion¹⁰⁴ to use mechanical fields to orient particles.

Slip-casting is a method that consists of pouring a particulate suspension onto a porous mold that concentrates the particles into a green body. This green body is then sintered to form a dense ceramic [Fig. 9(a)]. The porosity of the mold, through capillary forces, sucks in the liquid with a kinetic described by the equation

$$x = \sqrt{\frac{2J\Delta P}{\eta R}} t, \quad (1)$$

where x is the thickness of the deposited layer of the particle onto the mold, t is the time, J is the ratio between the volume of this layer and the extracted liquid, R is the hydrostatic resistance, ΔP is the difference in pressure

across the deposit, and η is the viscosity of the liquid. Typically, this method is used to cast complex shaped objects¹⁰⁷ and can be accommodated to fabricate controllable composition gradients by gradually mixing two slurries¹⁰⁶ [Fig. 9(b)]. Slip-casting can be coupled with rotating magnetic fields to generate complex orientations of anisotropic 2-D particles. Due to the well-defined kinetics of the fluid removal and of the deposit growth, temporal variation in magnetic field orientation transposes directly into spatial variation in particle orientation. Using this method, macroscopic assemblies with periodic arrangements of particles were fabricated and with layer thicknesses and orientations that could be predicted knowing the kinetics [Eq. (1)] and the time-variation of the magnetic field¹⁰⁵ [Fig. 9(c)]. These structures are layers of oriented particles with finite size and following the curves of the mold. The multilayering can thus be

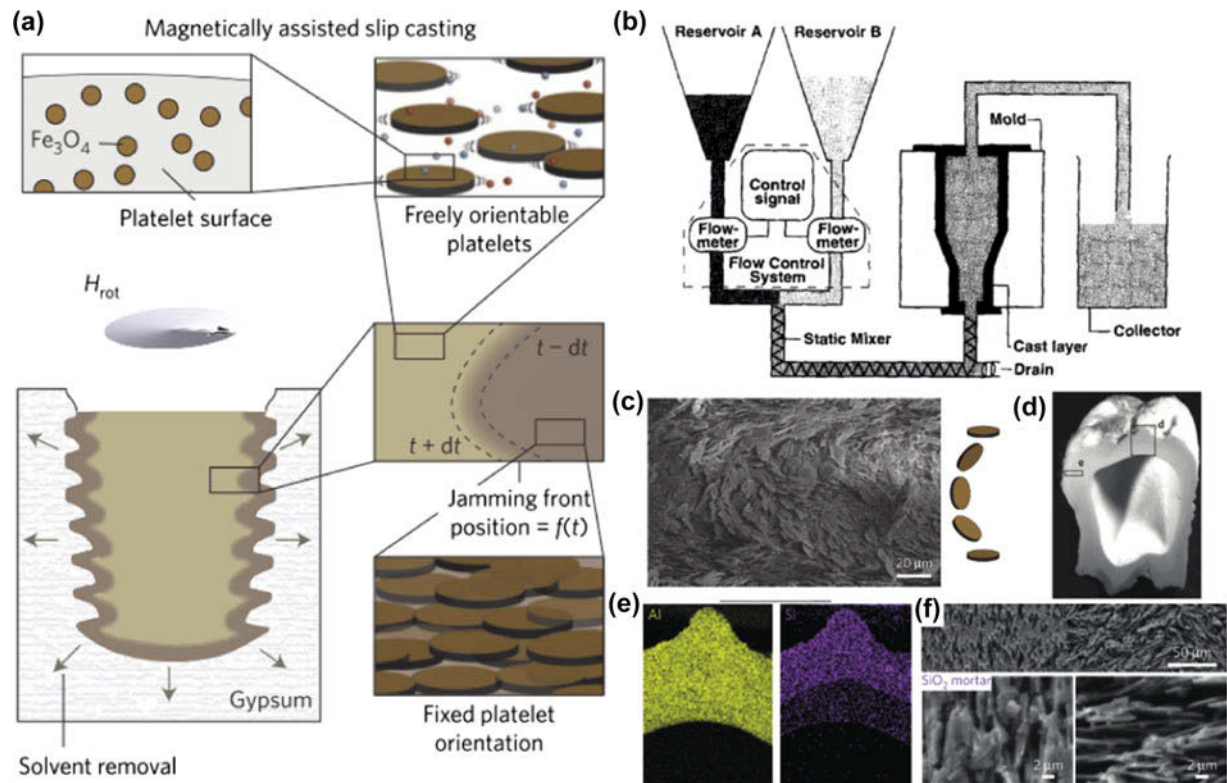


FIG. 9. External fields applied to slip-casting. (a) Schematics of the slip-casting with external magnetic field indicating the surface modification of the particles and the time-dependent growth of the deposited layer at the surface of the porous mold of gypsum¹⁰⁵ (copyright © 2015 Springer Nature). (b) Set-up used to create controlled composition gradients in slip-casting¹⁰⁶ (copyright © 1994 John Wiley and Sons). (c–f) Electron micrograph, optical image, X-ray elemental map, and micrographs, respectively, indicating the diversity in particle orientations, shape and chemical composition¹⁰⁵ (copyright © 2015 Springer Nature). Scale bars: (c) 20 μm , (f) from top to bottom and right to left: 50 μm , 2 μm , 2 μm .

obtained in complex-shaped objects and in a single casting event, in opposition to the sequential layering by tape-casting. Using this method, a bilayer ceramic tooth was created, replicating the actual shape of a human molar and its internal microstructure and properties, in a ceramic composite containing a mineral concentration above 60%¹⁰⁵ [Figs. 9(d)–9(f)].

Recent advances in 3D printing technologies bring along exciting capabilities such as variations of composition, shape, local structural design, and local density as the material is printed (Fig. 10). 3D printing of composites is performed by several methods:

(i) Laser printing, where the printer head is used to locally cure the matrix in a bulk solution [Fig. 10(a)].

(ii) Stereolithography, where the material deposited is cured by UV before depositing another layer [Fig. 10(b)].

(iii) Direct-ink writing where the material is extruded through a nozzle and keeps its shape thanks to a shear-thinning ink formulation [Fig. 10(c)]. In this latter case, the object is first entirely printed in 3D, then can be cured for consolidation.

3D printing techniques have been coupled with external fields to increase the degree of internal control of the

materials deposited. Acoustic fields have been used in laser printing to create oriented arrays of glass fibers in multiple directions¹⁰⁸ [Fig. 10(d)]. Magnetic alignment, due to its simplicity and compatibility with the printer, has been used to orient 1-D fibers in deposited filaments,⁶³ and to biaxially orient 2-D particles in localized and controlled directions in space^{88,109} [Figs. 10(e) and 10(f)]. Recent strategies rely on controlled shear at the nozzle. By rotating the tip of the nozzle during the extrusion, 1-D fibers can be oriented in ways non-trivially available by other means.¹¹¹ The examples provided so far have however limited mineral content. Since the extrusion through the nozzle or the acoustic manipulation requires the suspensions to have shear-thinning behavior and to allow for UV-curing, the amount of particles has been limited to 10%. Nevertheless, one example of direct writing of a dense ceramic is shown in Figs. 10(g) and 10(h).¹¹⁰ The authors exploited the shear properties of a suspension of anisotropic alumina platelets in concentrations exceeding 30 vol%. They determined the geometry of the nozzle required to obtain random or concentric alignment patterns in the printed filaments. This control of the shear profile at the nozzle level allows for concentric alignment over controllable thicknesses. Using

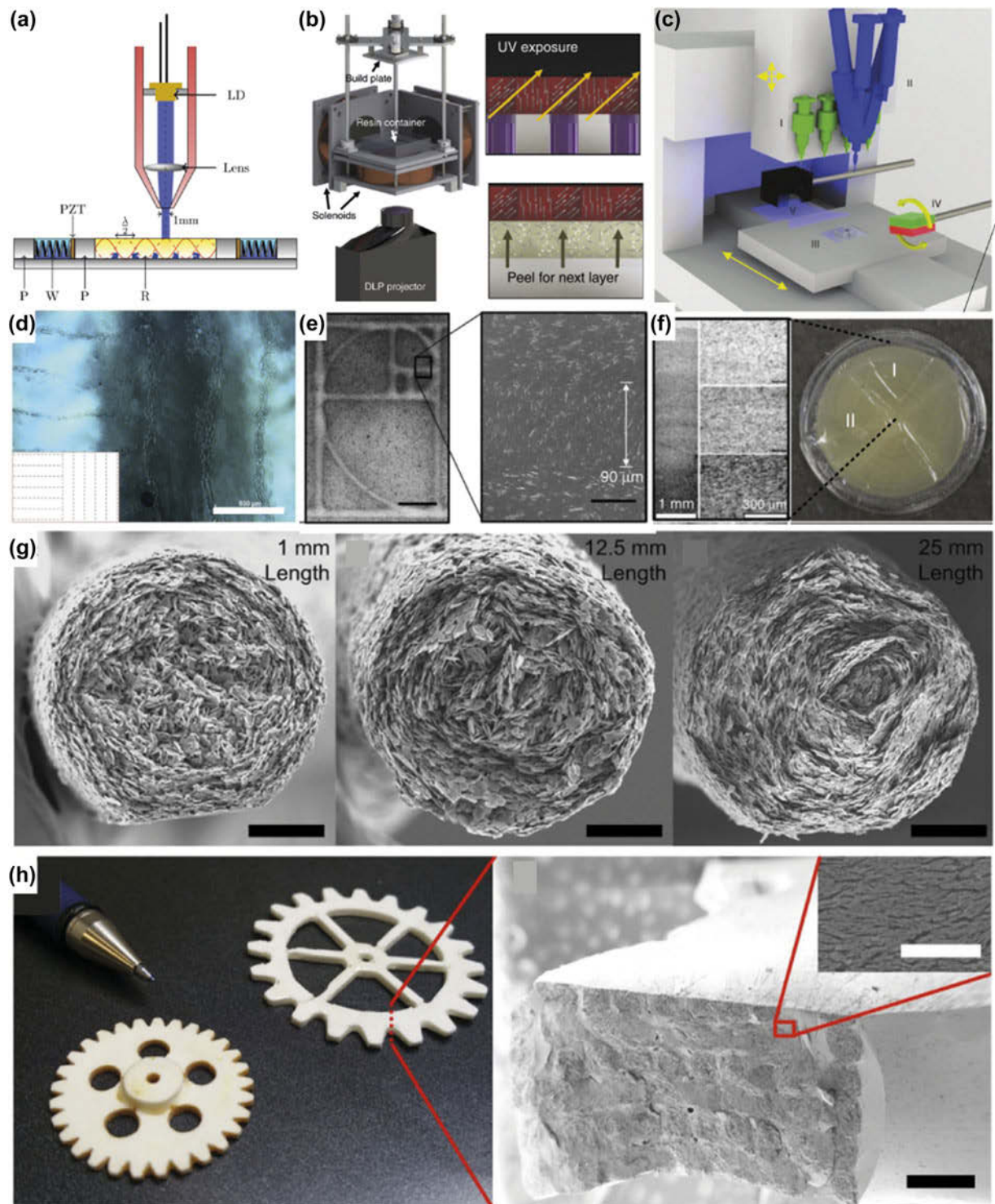


FIG. 10. External fields applied to 3D printing. (a) Schematics for laser printing in an acoustic field¹⁰⁸ (copyright © 2016 IOP Publishing), (b) stereolithography with magnetic field¹⁰⁷ (copyright © 2015 Springer Nature) and (c) direct-writing with magnetic field⁸⁸ (copyright © 2015 Springer Nature), and (d, e, and f) the optical micrographs of the structures obtained with these methods. Scale bars: (d) 100 μm , (e) 500 μm and 50 μm from left to right and (f) 1 mm and 300 μm . (g) Images of the cross sections of filaments printed using concentrated suspension of 2-D particles via direct-ink writing and (h) the macroscopic final objects and closer view on their microstructure¹¹⁰ (copyright © 2017, Springer Nature).

this method, dense assemblies with helicoidal patterns similar to that presented in Fig. 2(c), but at the filament level, could be realized.

VI. FLEXIBILITY, CONTROLLABILITY, AND SCALABILITY OF THE METHODS

The total degree of freedom (TDoF) of each of the techniques presented earlier is a relevant indicator to determine how much design freedom they allow for creating controlled and complex heterogeneous architectures (Fig. 11). The TDoF is the number of parameters that can be controlled independently, namely the possibility to:

- (i) Orient particles uniaxially or biaxially.
- (ii) Control their position.
- (iii) Tune the density and the volume fraction of particles.
- (iv) Control the chemical composition.
- (v) Control of the shape.

The TDoF is a simplified yet more complete parameter than the degree of freedom (DOF) defined in Fig. 6 and is described by the following equation:

$$\text{TDoF} = \delta_{\text{lg}} \cdot \Delta_{\text{local}} \cdot \text{DOF} + (1 - \delta_{\text{lg}}) \cdot (\Delta_{\text{global}} + \text{DOF}) \quad (2)$$

where Δ_{local} and Δ_{global} are the numbers of parameters from the slurry that vary locally and globally, respectively, and DOF is the degree of freedom from the manipulation of and δ_{lg} a factor such as $\delta_{\text{lg}} = 0$ if the method does not allow for local variations and $\delta_{\text{lg}} = 1$ if it does. Therefore, considering curing, $\delta_{\text{lg}} = 0$ and $\text{TDoF} = \Delta_{\text{global}} + \text{DOF}$. The parameters that can be tuned are the density, composition, and shape; therefore $\text{TDoF} = 3 + \text{DOF}$. In the case of tape-casting, the overall shape cannot be varied, so $\text{TDoF} = 2 + \text{DOF}$. For slip-casting and 3D printing, two additive manufacturing methods, $\delta_{\text{lg}} = 1$ and $\text{TDoF} = \Delta_{\text{local}} \cdot \text{DOF}$. The local parameters that can be varied are density and composition and therefore $\text{TDoF} = 2 \times \text{DOF}$. Shape is not a variable and is an inherent consequence from the capability for local variations. Figure 11(a) summarizes the TDoF attainable for these methods. As a result of the bottom-up assembly principle offered by additive manufacturing, the TDoF of electromagnetic manipulation of particles combined with these techniques is at its maximum for slip-casting and 3D printing methods.

Furthermore, to estimate the suitability of a technology for precise fabrication of controlled structures, it is important to characterize the alignment quality achieved. Optical observations of the reflection of light or of the appearance of birefringent colors are

qualitative means to determine particle orientation at the surface of a bulk sample. Typically, for large micrometric particles, light reflection at the edges will lead to less intensity of light reflection and therefore a darker color will be observed in comparison to the plane of the large surface area of the particles.^{93,105} In addition, if one dimension of the particles or the interparticle spacing lies within the spectral range of light, structural colors or birefringence may emerge, indicating nematic, smectic, or chiral arrangements. This phenomenon is observed, for example, in concentrated clay suspensions.¹¹² Quantitative information can be obtained by X-ray methods such as rocking curves,¹¹³ small angle X-ray scattering (SAXS),¹¹⁴ and image analysis.⁸⁸ In these methods, the quality of the alignment is measured as the inverse of the angle distribution of the particles. The full width at half maximum of the angle distribution is directly available with the rocking curves⁴⁴ or by plotting the intensity as a function of the azimuthal angle from SAXS diffraction patterns.¹¹⁵ In addition, an order parameter S can be extracted from the angle distribution using the following equations:

$$S = \frac{\int_{\theta=0}^{2\pi} I(\theta)M(\theta)d\theta}{\int_{\theta=0}^{2\pi} I(\theta)d\theta} \quad (3)$$

where $I(\theta)$ is the scattered intensity at the angle θ and M is the Legendre polynomial, or a simplified equation^{116,118}:

$$S = \frac{1}{2} (\cos^2\theta - 1) \quad (4)$$

Performing X-ray measurements in SAXS, in particular, is interesting to access bulk information without the need for cutting and polishing samples that might cause local defects and misorientation. To obtain localized information about the microstructure and the composition in complex heterogeneous structures, 3D small- and wide-angle scattering from synchrotron sources, allied with tomographic reconstruction, have been applied to successfully reconstruct in 3D, the local microstructure of trabecular bone.^{114,117} These methods are suitable for heterogeneous dense composite architectures since unconventional alignment is hard to decipher in cut slices. Using slices, measurement at several cutting angles would be required to retrieve local orientations of 2-D particles in 3-D. Finally, in situ set-ups using electric field¹¹⁸ or shear-induced manipulation of particles during the measurements can be performed using synchrotron X-rays to give a direct correlation between the forces and torques applied and the alignment obtained.^{115,116}

Figure 11(b) is a visual summary of the capacity of the fabrication methods to reach high design flexibility with high alignment quality. The first observation is that all

methods reach an alignment quality within 0.025–0.1. For comparison, a natural structure with aligned crystals and characterized with these techniques gives a misalignment of $\sim 2.5^\circ$ and therefore an alignment quality of 0.4.¹²¹ On the other side, a totally random structure would have a misorientation of 180° and an alignment quality of 0.0056. The highest alignment quality is obtained for tape-casted processes, while freeze-casting and electric fields have the lowest. Magnetic fields nevertheless present the advantage of being easily combined with all the processes, in particular with additive manufacturing, and therefore can couple high TDoF with good alignment. However, the effect of alignment on the properties is not clear. For example, in nacre-like structures with biaxially aligned arrangements, theoretical models and simulations seem to indicate that a perfect alignment is required to enable periodicity and damping of mechanical waves for extreme mechanics.¹²² Experimentally, dense nacre-like alumina-silica ceramics prepared by freeze-casting and pressing exhibit a toughness $K_{JC} \sim 12 \text{ MPa}\sqrt{m}$ after a crack length of $\Delta a = 0.2 \text{ mm}$.¹²³ Same ceramics composition prepared using slip-casting and magnetic alignment, hence lower degree of misalignment, exhibit a toughness of $K_{JC} \sim 14 \text{ MPa}\sqrt{m}$ after the same crack length.¹⁰⁵ However, the crack extension is doubled in the case with lower alignment. The influence of alignment therefore should be considered carefully, taking into account other factors. The interfacial strength, in particular, is an important variable that affects the mechanics of aligned structures depending on the angle between the incoming crack and the deflecting interface.¹²⁴

Up-scaling in fabrication time and in the size of the parts and the programmability of the local hierarchical architecture are important for the potential transfer of these technologies to industrial processes and for the

fabrication of customized parts specially adapted for their application. Multilayering easily allows customization, and the use of external fields in each layer could be automated, but is time consuming due to the lag time between the deposition and consolidation of each layer. Furthermore, the thickness of each layer obtained typically is of a few millimeters at most. Thus, the number of layers to stack for the fabrication of a macroscopic part of 1–10 cm in thickness is on the order of 10–1000.⁹⁴ One additional major constrain is the lack of shaping flexibility: the method inevitably leads to sheet-like pieces. Freeze-casting, on the other hand, is a method that has caught a lot of attention by the well-established descriptions of its principles⁹⁵ and the facility of the set-up for bulk pieces. The theoretical description of the method can be used effectively to program the final architecture as described in Sec. IV. Freeze-casting is a bulk method yielding macroscopic samples typically of 2–3 centimeters in thickness with no theoretical limitations on the lateral dimensions. Scale-up in size would simply result from scaling up the set-up. To the best of my knowledge, no study has yet tackled shaping of complex parts using this technology but no stringent restrictions are foreseeable. Control and localization of the microstructure have been implemented by the use of additional external fields. Compositional gradients have been scarcely explored using extrusion¹²⁵ and could also possibly be implemented using similar set-ups as for slip-casting [Fig. 9(b)]. Slip-casting is similarly scalable in shape and time, with the additional advantage of being originally an industrial process. Supplemented by external fields, the orientation of the particles, their localization, and their composition can be modified both globally or locally in complex shapes.¹⁰⁵ Finally, 3D printing based on extrusion technologies with external fields offers local control in composition and orientation, a large variability in shape

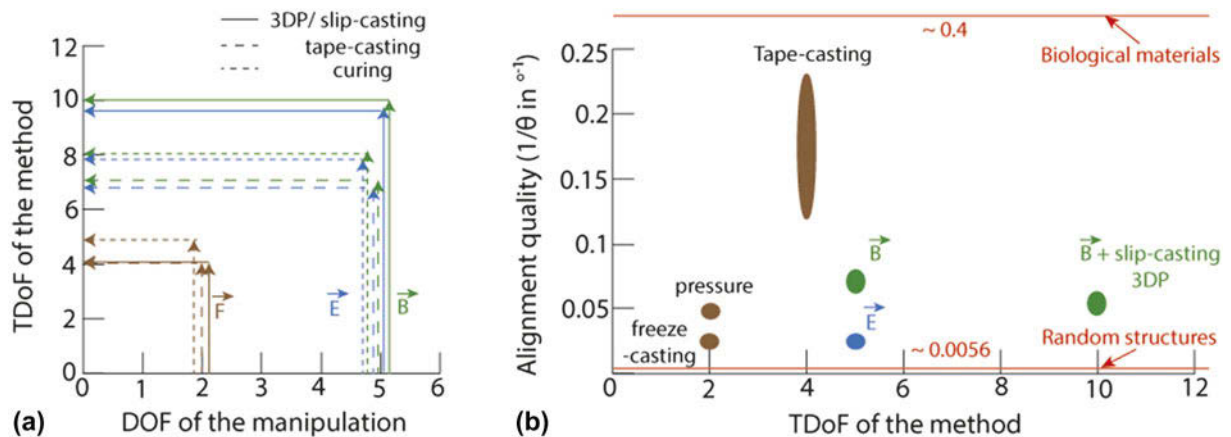


FIG. 11. Design space and alignment quality comparison. (a) TDoF of the method as a function of the DOF given by the external field. Continuous lines indicate additive manufacturing types of processes. (b) Alignment quality as a function of the TDoF of the method. Data from Ref. 85 for freeze-casting, Ref. 123 for pressure and Ref. 72 for sedimentation, Ref. 119 for electric field, Ref. 120 for magnetic alignment, Refs. 89 and 120 for tape-casting, Ref. 105 for slip-casting with magnetic field, and Ref. 88 for 3D printing and magnetic field. Bone structure is used as an example of the biological material.¹²¹

and the possibility of hierarchically structuring porous objects. 3D printing is also programmable by essence and can be scaled-up in time and dimensions. Programming and automation of the printing are controlled by computer aided design software that can also control the external fields. Another specificity of 3D printing that is not easily available in other methods is the possibility to change the design as the material is processed. This property could be useful in cases where the evolution of the materials with time is important.

Slip-casting and extrusion-based 3D printing supplemented with external fields are additive manufacturing techniques. Their bottom-up fabrication principle mimics the bottom-up synthesis of most natural materials by living cells and consequently offers extensive design flexibility. These methods therefore have huge potential in designing complex heterogeneous and microstructured dense composites.

Furthermore, sample pieces as large as 10 cm diameter and 1 cm in thickness could be produced reliably in the laboratory.¹⁰⁵ This is promising for larger pieces. However, theoretical scalability will demand further optimization to maintain reproducible and reliable results.¹²⁴ Indeed, antifoaming agents might be required during the slurry preparation and the mixing and deagglomeration of the powders. The slurry should also demonstrate long time colloidal stability. For good handling and storing characteristics, large green body might demand addition of organic binders. Finally, shape retention after solvent removal should not be affected by the microstructure and composition variation within the sample. Indeed, microstructuring has been found to shape ceramics into spectacular coil structures in bilayers of 200 μm thickness.⁹⁰ However, reducing the layer thickness and producing larger construct could maintain a homogeneous drying.¹²⁷

VII. PROPERTIES OF HIGHLY MINERALIZED COMPOSITES WITH BIO-INSPIRED MICROSTRUCTURES

The properties achieved by hierarchically structuring highly mineralized composites are diverse and can surpass those of the natural material they are inspired from, but further optimization and understanding are still required to implement natural strategies into synthetic dense composites (Fig. 12).

First, by reproducing biological structural elements in chemical systems close to the natural example, similar and enhanced properties could be obtained [Fig. 12(A)]. The nacre brick-and-mortar structure has been the source of numerous studies and provides excellent examples that will be discussed in the following. Using mineralization of ions to form calcium carbonate onto a porous organic template, subsequently followed by infiltration and

mechanical pressure, Mao et al. produced artificial nacre structures with mechanical properties close to that of natural nacre.¹³¹ The specimens combine specific strengths and toughness, a rising resistance to crack propagation due to crack deflection and interlamellar debonding at the interface between the mineral tablets.¹³¹ This artificial nacre is augmented with structural iridescence colors. Using gravitational field and evaporation-induced self-assembly, Gao et al. reproduced nacre structure from preformed calcium-based platelets in a faster and scalable manner.¹³² Mechanical properties are similar to that of the natural material and also feature multiple crack deflection, crack bridging, platelet pull-out, dissipation mechanisms that are responsible for the rising energy needed to propagate the crack throughout the structure.¹³²

Second, benefiting from the use of synthetic building blocks with superior performance than the natural ones, mechanical properties of bio-inspired and dense assemblies that largely surpass the natural ones can be constructed. This is the key advantage of synthetic means over natural fabrication, in addition to scaling and speed. Beyond purely mimicking biomaterials, bio-inspiration aims at applying the strategy found in nature to other constituents to enhance their properties. As such, researchers have been extensively using alumina microplatelets, available in bulk quantities, as the primary building block for nacre-like composites. Despite a very high mechanical strength, alumina remains a ceramic and therefore breaks catastrophically. The nacre-like structure applied to alumina is a strategy to obtain a temperature and chemically resistant material that also has high strength and toughness. Using freeze-casting or slip-casting with magnetic alignment and hot pressing, nacre-like alumina with toughness 6 times higher than the natural seashell was obtained.^{105,123,128} Synthetic processes also allow for further modification to generate multiple functions. Electrical conductivity, for example, can be harnessed via the incorporation of metallic particles. During hot pressing, the metallic particles locally melt and form a percolating network throughout the composite giving electrical conductivity, in addition, the mechanical strength and toughness.¹⁰⁵ Other examples include the use of piezoelectric filler polymers for piezoelectric, high strength, and transparent ceramic composites,¹³² or anisotropic swelling and shrinking upon immersion in a solvent or during high temperature sintering.^{87,88,90}

However, the higher the mineral content, the more challenging the processes. The method developed, involving high temperature or pressure, further deviate from biological processes. Then, the properties of the materials fabricated do not present the extraordinary properties found in the natural ones. For example, helicoidal arrangements and heterogeneous architectures

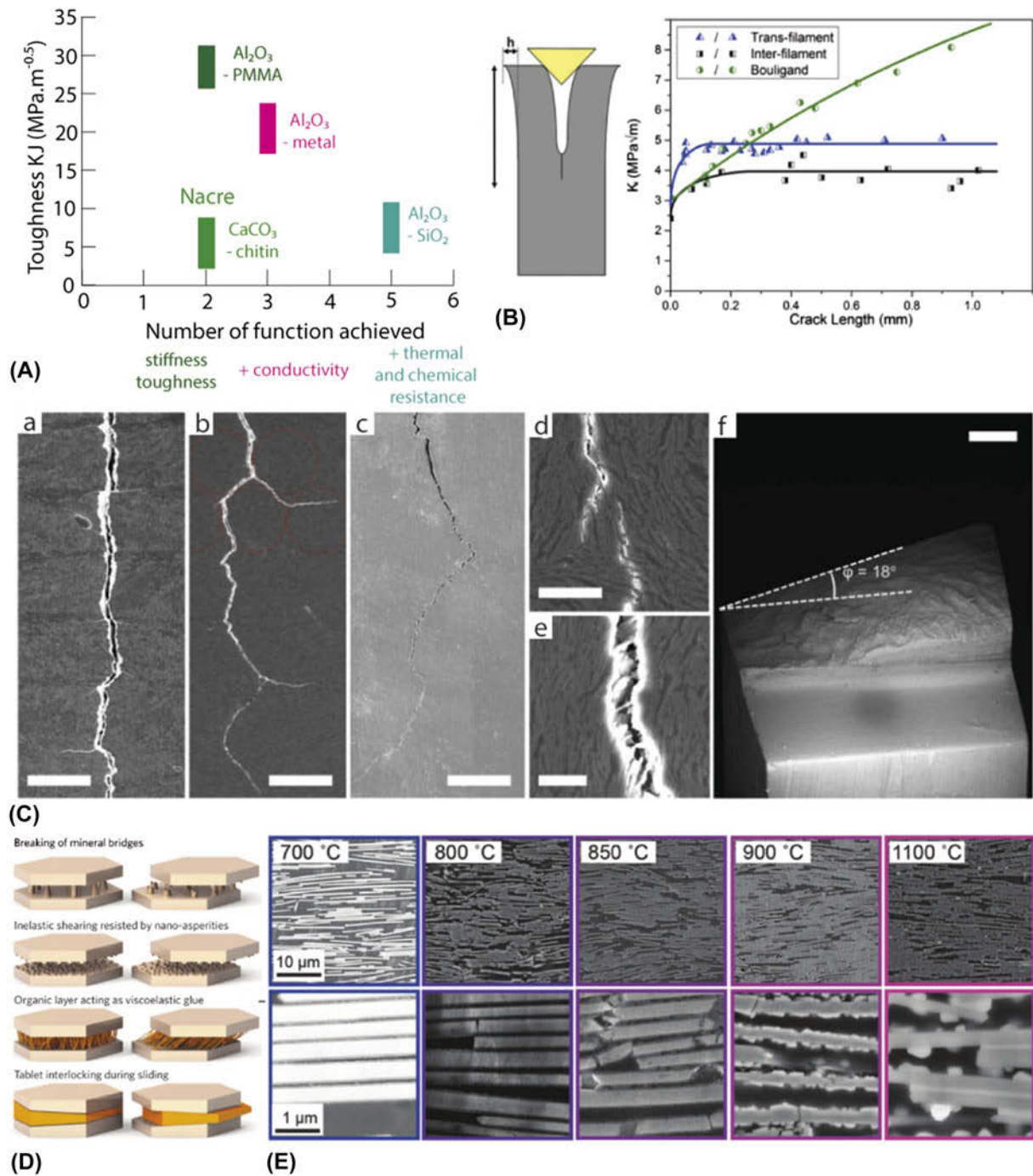


FIG. 12. Examples of properties of architected highly mineralized composites. (A) Maximum mechanical toughness achieved for natural nacre and bio-inspired nacre-like composites composed of Al₂O₃-PMMA (polymethacrylate),¹²⁸ Al₂O₃-Cu,¹⁰⁵ Al₂O₃-Ni,¹²⁹ and Al₂O₃-SiO₂^{105,123} to highlight the range of mechanical properties attainable and the multifunctionalities of the resulting materials. (B) Schematics of the mode of fracture imposed onto a hierarchical dense alumina composite produced by direct writing in dense concentrations of particles and the corresponding toughness¹¹⁰ (copyright © 2017 Springer Nature). (C) The electron and optical micrographs highlight the crack deflection occurring in the microstructured specimen.¹¹⁰ Scale bars: (a, b, and c) 300 μm, (d) 29 μm, (e) 10 μm, and (f) 0.5 mm (copyright © 2017 Springer Nature). (D) Schematics of energy dissipation mechanisms found in natural highly mineralized composites, in particular, seashells.² (copyright © 2014 Springer Nature) (E) Electron micrographs of polished cross section of highly mineralized composites with 60 vol% of alumina particles and with tunable interparticle roughness. The roughness is controlled by titanium oxide nanoclusters that form at the surface of the particles as the temperature increases¹³⁰ (copyright © 2017 John Wiley and sons).

in fully dense alumina composites do present improvement in their mechanical toughness but not at the extent found in natural materials. One probable reason for this is that the interfacial properties between the grains are too strong and stiff to promote the large panel of energy dissipation mechanisms found in natural composites [Figs. 12(B) and 12(D)]. To address this issue, efforts are being made to control the properties at the interface between the building blocks to allow for more stress transfer, interlocking, and friction.^{2,24,130} By exploiting the coalescence and cluster formation of titanium oxide at the surface of alumina platelets under high temperature treatment, the toughness of dense alumina nacre-like composites could be increased simply by tuning and optimizing the interfacial roughness [Fig. 12(E)].¹³⁰ Another factor preventing the direct comparison of artificial and natural composites is that despite progress in microstructuring, the materials achieved are still far from the complexity observed in natural materials where microstructure spans over multiple length scales.²⁻⁴

VIII. CONCLUSION

The current pathways for obtaining highly mineralized composites and ceramics have been reviewed and discussed to identify the stages where the application of external fields can be used to hierarchically structure synthetic materials. The theory of manipulation of particles using external fields and their set-ups have been described as well as how this manipulation can take place in concentrated suspensions. The current state-of-the-art methods for obtaining highly mineralized composites with complex heterogeneous microstructures have been explored and their strengths and limitations have been evaluated. Finally, the benefit of fabricating these structures in highly mineralized composites in terms of their material properties have been highlighted.

To conclude, employing external fields to produce these high value materials might appear to come at a great fabrication cost. But it could be expected that the value added in terms of life-time, customization, and adaptability of the processes can surpasses this detrimental cost. The use of additive manufacturing and specifically advanced manufacturing is a good strategy to reduce material waste and employing bio-inspired designs brings extra properties from only poor materials.

There is currently immense research in the domain of bio-mimetics and bio-inspiration that focus on the transposition of these principles to the industrial scale.^{126,133,134} The considerations to apply these concepts and these new materials go beyond the pure performance and take into account the public perception and need, the relevance of the product, and the sustainability of the manufacturing process from the fabrication of the materials' constituents to the end of life of the

parts. In parallel to industrial goals, the great progress that has been made to produce these intricate materials is also a unique tool to better understand the mechanisms that make natural materials diverse and at the same time unique. By varying the parameters, the orientations, the shape of the particles, the chemistry, etc., using experimental assessment and computer simulations, it is possible to explore, for example, the influence of the organic matrix in these highly mineralized composites,¹³⁵ of nacre-like mineral bridges on crack propagation.¹³⁰ The materials fabricated will thus allow to further explore current models, for example, related to wave propagation and the existence of band gaps in natural multilayered materials.¹³⁶

Finally, additive manufacturing technologies enable the design of on-demand local properties within a material. Alike in nature where the environmental constraints influence the structure of the biocomposites, synthetic applications require specific architectures. For instance, localized designs using external fields and high mineralization can be used to locally reinforce a hole in a soft matrix.^{62,137} Fabrication of unconventional shapes to produce patient-adapted teeth or wear-resistant textile threads is also feasible by additive manufacturing aided with external fields that aim highly mineralized bioinspired structures.^{90,105}

IX. NOMENCLATURE

H_{tot}	Hardness of the composite
ϕ_h	Volume fraction in hard phase
ϕ_s	Volume fraction in soft phase
H_h	Hardness of the hard phase
H_s	Hardness of the soft phase
P	Applied pressure
V_p	Volume of the particle
ϵ_0	Permittivity of free space
ϵ_f	Permittivity of the fluid
K_{\perp}	Complex effective polarization factor for the out-of-plane particle direction
K_{\parallel}	Complex effective polarization factor for the in-plane particle direction
E_0	Applied electric field
Θ	Angle between the particle long axis and the direction of the field
μ_0	Permeability of free space
χ_p	Magnetic susceptibility of the particle
χ_f	Magnetic susceptibility of the fluid
a	Radius of the particle
H	Magnetic field
b	Half the diameter of the particle
g	Gravitational constant
ρ_p	Density of the particle
ρ_f	Density of the fluid
η	Viscosity of the fluid
μ	Dynamic viscosity of the fluid
f	Geometrical factor called Perrin friction factor

(continued)

IX. (continued)

c_f	Speed of sound in the fluid
$\langle \rangle$	Average over time
$f_1 = 1 - \frac{K_p}{K_f}$	with K_p and K_f the compressibility of the particle and of the fluid, respectively
$f_2 = \frac{2(\rho_p - \rho_f)}{2\rho_p + \rho_f}$	
v	Average velocity of the particle
λ	Wavelength of the acoustic wave
x	Position of the center of mass of the particle
$\delta = \frac{3V_p \rho_p}{8\rho_f a^3}$	
v_w	Velocity of the standing wave
χ_{\perp}	Magnetic susceptibility for the out-of-plane particle direction
χ_{\parallel}	Magnetic susceptibility for the in-plane particle direction
B_0	Applied magnetic field
v_f	Velocity of the fluid with respect to the particles
L	Characteristic linear dimension
d	Diameter of the SPIONs adsorbed onto the particle
$\dot{\gamma}$	Shear rate
p	Acoustic pressure
E	Electric field
$U_g, U_a, U_e,$ U_m	Potential energies from the gravitational, acoustic, electric and magnetic field, respectively
$F_g, F_a, F_e,$ F_m	Torques induced by the gravitational, acoustic, electric and magnetic field, respectively
T_g, T_a, T_e, T_m	Forces induced by the gravitational, acoustic, electric and magnetic field, respectively
Re	Reynolds number
f_c	Critical frequency
J	Ratio deposited layer and extracted liquid
R	Hydrostatic resistance
DOF	Degree of freedom of the manipulation
TDOF	Total degree of freedom
Δ_{local} and Δ_{global}	Number of local and global variables, respectively
δ_{lg}	Factor equal to 0 when no local variables, equal to 1 when presence of local variables
S	Order parameter
I	Scattered intensity
M	Legendre polynomial

ACKNOWLEDGMENTS

The author acknowledges Ahmet Demirors for revising the manuscript and providing valuable inputs, and funding from Swiss National Science Foundation (grant_P2EZIP2_172169).

REFERENCES

1. H.S. Kim: On the rule of mixtures for the hardness of particle reinforced composites. *Mater. Sci. Eng., A* **289**, 30–33 (2000).
2. U.G.K. Wegst, H. Bai, E. Saiz, A.P. Tomsia, and R.O. Ritchie: Bioinspired structural materials. *Nat. Mater.* **14**, 23–36 (2015).
3. P. Fratzl and R. Weinkamer: Nature’s hierarchical materials. *Prog. Mater. Sci.* **52**, 1263–1334 (2007).
4. J.W.C. Dunlop and P. Fratzl: Biological composites. *Annu. Rev. Mater. Res.* **40**, 1–24 (2010).
5. S.E. Naleway, M.M. Porter, J. Mckittrick, and M.A. Meyers: Structural design elements in biological materials : Application to bioinspiration. *Adv. Mater.* **27**, 5455–5476 (2015).

6. M.C. Maas and E.R. Dumont: Built to last: The structure, function, and evolution of primate dental enamel. *Evol. Anthropol.* **8**, 133–153 (1999).
7. J. Sun and B. Bhushan: Hierarchical structure and mechanical properties of nacre: A review. *RSC Adv.* **2**, 7617 (2012).
8. S. Bentov, P. Zaslansky, A. Al-Sawalmih, A. Masic, P. Fratzl, A. Sagi, A. Berman, and B. Aichmayer: Enamel-like apatite crown covering amorphous mineral in a crayfish mandible. *Nat. Commun.* **3**, 839 (2012).
9. S. Bentov, E.D. Aflalo, J. Tynyakov, L. Glazer, and A. Sagi: Calcium phosphate mineralization is widely applied in crustacean mandibles. *Sci. Rep.* **6**, 1–10 (2016).
10. S. Amini, A. Masic, L. Bertinetti, J.S. Teguh, J.S. Herrin, X. Zhu, H. Su, and A. Miserez: Textured fluorapatite bonded to calcium sulphate strengthen stomatopod raptorial appendages. *Nat. Commun.* **5**, 1–12 (2014).
11. J.C. Weaver, Q. Wang, A. Miserez, A. Tantuuccio, R. Stromberg, K.N. Bozhilov, P. Maxwell, R. Nay, S.T. Heier, E. DiMasi, and D. Kisailus: Analysis of an ultra hard magnetic biomineral in chiton radular teeth. *Mater. Today* **13**, 13 (2010).
12. J. Aizenberg, J.C. Weaver, M.S. Thanawala, V.C. Sundar, D.E. Morse, and P. Fratzl: Skeleton of *Euplectella* sp.: Structural hierarchy from the nanoscale to the macroscale. *Science* **297**, 275–279 (2005).
13. X.H. Wang, X.H. Zhang, H.C. Schröder, and W.E.G. Müller: Giant basal spicule from the deep-sea glass sponge monorhaphis chuni: Synthesis of the largest bio-silica structure on Earth by silicatein. *Front. Mater. Sci. China* **3**, 226–240 (2009).
14. T.N. Sullivan, B. Wang, H.D. Espinosa, and M.A. Meyers: Extreme lightweight structures: Avian feathers and bones. *Mater. Today* **20**, 377–391 (2017).
15. D.J. Brink, N.G. van der Berg, and A.J. Botha: Iridescent colors on seashells: An optical and structural investigation of helcion pruinosus. *Appl. Opt.* **41**, 717–722 (2002).
16. J. Aizenberg, V.C. Sundar, A.D. Yablon, J.C. Weaver, and G. Chen: Biological glass fibers: Correlation between optical and structural properties. *Proc. Natl. Acad. Sci. U. S. A.* **101**, 3358–3363 (2004).
17. M.C. Deng, T.S. Chin, M.C. Deng, and T.S. Chin: Magnetic properties of goethite in radulae of limpets. *IEEE Trans. Magn.* **28**, 2409–2411 (1992).
18. G. Falkenberg, G. Fleissner, K. Schuchardt, M. Kuehbacher, P. Thalau, H. Mouritsen, D. Heyers, G. Wellenreuther, and G. Fleissner: Avian magnetoreception: Elaborate iron mineral containing dendrites in the upper beak seem to be a common feature of birds. *PLoS One* **5**, 1–9 (2010).
19. A. Marino and R.O. Becker: Piezoelectric effect and growth control in bone. *Nature* **228**, 473–477 (1970).
20. W.S. Williams and L. Bregger: Piezoelectricity in tendon and bone. *J. Biomech.* **8**, 407–413 (1975).
21. A.R. Studart: Bioinspired ceramics: Turning brittleness into toughness. *Nat. Mater.* **13**, 433–435 (2014).
22. R. Bermejo: Toward seashells under stress: Bioinspired concepts to design tough layered ceramic composites. *J. Eur. Ceram. Soc.* **37**, 3823–3839 (2017).
23. A.H. Heuer, D. Fink, V. Lariaia, J. Arias, P. Calvert, K. Kendall, G.L. Messing, P. Reike, D. Thompson, A. Wheeler, A. Veis, and A. Caplan: Innovative materials processing strategies: Biomimetic approach. *Science* **255**, 1098–1105 (1992).
24. A.K. Dastjerdi, R. Rabiei, and F. Barthelat: The weak interfaces within tough natural composites: Experiments on three types of nacre. *J. Mech. Behav. Biomed. Mater.* **19**, 50–60 (2013).
25. J.C. Weaver, G.W. Milliron, A. Miserez, K. Evans-lutterodt, S. Herrera, I. Gallana, W.J. Mershon, B. Swanson, P. Zavattieri,

- E. DiMasi, and D. Kisailus: The stomatopod dactyl club: A formidable damage-tolerant biological hammer. *Science* **336**, 1275–1280 (2012).
26. H. Chai, J.J. Lee, P.J. Constantino, P.W. Lucas, and B.R. Lawn: Remarkable resilience of teeth. *Proc. Natl. Acad. Sci. U. S. A.* **106**, 7289–7293 (2009).
 27. D.A. Devendra Bajaj, A. Nazari, and N. Eidelman: A comparison of fatigue crack growth in human enamel and hydroxyapatite. *Biomaterials* **29**, 4847–4854 (2009).
 28. W. Suchanek and M. Yoshimura: Processing and properties of hydroxyapatite-based biomaterials for use as hard tissue replacement implants. *J. Mater. Res.* **13**, 94–117 (1998).
 29. T.P. Hoepfner and E.D. Case: The influence of the microstructure on the hardness of sintered hydroxyapatite. *Ceram. Int.* **29**, 699–706 (2003).
 30. K.S. Katti, B. Mohanty, and D.R. Katti: Nanomechanical properties of nacre. *J. Mater. Res.* **21**, 1237–1242 (2006).
 31. N. Guarín-Zapata, J. Gomez, N. Yaraghi, D. Kisailus, and P.D. Zavattieri: Shear wave filtering in naturally-occurring Bouligand structures. *Acta Biomater.* **23**, 11–20 (2015).
 32. H. Kessler, E. Chateau, and A.H. Heuer: Fracture mechanisms of the *Strombus gigas* conch shell: Implications for the design of brittle laminates. *J. Mater. Sci.* **31**, 6583–6594 (1996).
 33. D.F. Hou, G.S. Zhou, and M. Zheng: Conch shell structure and its effect on mechanical behaviors. *Biomaterials* **25**, 751–756 (2004).
 34. J.B. Deleze: The mechanical properties of the semitendinosus muscle at lengths greater than its length in the body. *J. Physiol.* **158**, 154–164 (1961).
 35. N.Ø. Brevik: Experimental study of fracture toughness in sedimentary rocks. Master thesis NTNU, Norges Teknisk Naturvitenskapelige Universitet, Trondheim, Norway, 2016.
 36. J. Deubener, M. Höland, W. Höland, N. Janakiraman, and V.M. Rheinberger: Crack tip fracture toughness of base glasses for dental restoration glass-ceramics using crack opening displacements. *J. Mech. Behav. Biomed. Mater.* **4**, 1291–1298 (2011).
 37. S. Inaba, S. Fujino, and K. Morinaga: Young's modulus and compositional parameters of oxide glasses. *J. Am. Ceram. Soc.* **82**, 3501–3507 (2004).
 38. B. Kukiattrakoon, P. Junpoom, and C. Hengtrakool: Vicker's microhardness and energy dispersive X-ray analysis of fluorapatite-leucite and fluorapatite ceramics cyclically immersed in acidic agents. *J. Oral Sci.* **51**, 443–450 (2009).
 39. A. Woesz, J.C. Weaver, M. Kazanci, Y. Dauphin, J. Aizenberg, D.E. Morse, and P. Fratzl: Micromechanical properties of biological silica in skeletons of deep-sea sponges. *J. Mater. Res.* **21**, 2068–2078 (2006).
 40. A. Miserez, J.C. Weaver, P.J. Thurner, J. Aizenberg, Y. Dauphin, P. Fratzl, D.E. Morse, and F.W. Zok: Effects of laminate architecture on fracture resistance of sponge biosilica: Lessons from nature. *Adv. Funct. Mater.* **18**, 1241–1248 (2008).
 41. H.H.K. Xu, J.B. Quinn, D.T. Smith, J.M. Antonucci, G.E. Schumacher, and F.C. Eichmiller: Dental resin composites containing silica-fused whiskers—Effects of whisker-to-silica ratio on fracture toughness and indentation properties. *Biomaterials* **23**, 735–742 (2002).
 42. V. Merk, M. Chanana, T. Keplinger, S. Gaan, and I. Burgert: Hybrid wood materials with improved fire retardance by bio-inspired mineralisation on the nano- and submicron level. *Green Chem.* **17**, 1423–1428 (2015).
 43. F. Bouville and A.R. Studart: Geologically-inspired strong bulk ceramics made with water at room temperature. *Nat. Commun.* **8**, 1–8 (2017).
 44. R. Libanori, R.M. Erb, and A.R. Studart: Mechanics of platelet-reinforced composites assembled using mechanical and magnetic stimuli. *ACS Appl. Mater. Interfaces* **5**, 10794–10805 (2013).
 45. F. Nudelman and N.A. Sommerdijk: Biomineralization as an inspiration for materials chemistry. *Angew. Chem. Int. Ed.* **51**, 6582–6596 (2012).
 46. K.J.C. Van Bommel, A. Friggeri, and S. Shinkai: Organic templates for the generation of inorganic materials. *Angew. Chem. Int. Ed.* **42**, 980–999 (2003).
 47. N. Kröger and K.H. Sandhage: From diatom biomolecules to bioinspired syntheses of silica- and titania-based materials. *MRS Bull.* **35**, 122–126 (2010).
 48. A.L. Boskey and R. Roy: Cell culture systems for studies of bone and tooth mineralisation. *Chem. Rev.* **108**, 4716–4733 (2009).
 49. Y. Liu, Y.K. Kim, L. Dai, N. Li, S.O. Khan, D.H. Pashley, and F.R. Tay: Hierarchical and non-hierarchical mineralisation of collagen. *Biomaterials* **32**, 1291–1300 (2011).
 50. S.Y. Bahn, B.H. Jo, Y.S. Choi, and H.J. Cha: Control of nacre biomineralization by Pif80 in pearl oyster. *Sci. Adv.* **3**, 1–9 (2017).
 51. P. Colombo: Polymer-derived ceramics: 40 years of research and innovation in advanced ceramics. *J. Am. Ceram. Soc.* **93**, 1805–1837 (2010).
 52. M.A. Mazo, C. Palencia, A. Nistal, F. Rubio, J. Rubio, and J.L. Oteo: Dense bulk silicon oxycarbide glasses obtained by spark plasma sintering. *J. Eur. Ceram. Soc.* **32**, 3369–3378 (2012).
 53. O.T. Picot, V.G. Rocha, C. Ferraro, N. Ni, E. D'Elia, S. Meille, J. Chevalier, T. Saunders, T. Peijs, M.J. Reece, and E. Saiz: Using graphene networks to build bio-inspired self-monitoring ceramics. *Nat. Commun.* **8**, 14425–14426 (2017).
 54. Z.C. Eckel, C. Zhou, J.H. Martin, A.J. Jacobsen, W.B. Carter, and T.A. Schaedler: Additive manufacturing of polymer-derived ceramics. *Science* **6268**, 58–64 (2016).
 55. T.A. Ring: Green body formation—Mise-en forme. In *Fundamentals of Ceramic Powder Processing and Synthesis*, T.A. Ring, ed. (Academic Press, San Diego, 1996); pp. 537–539.
 56. C. Minas, D. Carnelli, E. Tervoort, and A.R. Studart: 3D printing of emulsions and foams into hierarchical porous ceramics. *Adv. Mater.* **28**, 9993–9999 (2016).
 57. A.R. Studart, U.T. Gonzenbach, E. Tervoort, and L.J. Gauckler: Processing routes to macroporous ceramics: A review. *J. Am. Ceram. Soc.* **89**, 1771–1789 (2006).
 58. J. Guo, H. Guo, A.L. Baker, M.T. Lanagan, E.R. Kupp, G.L. Messing, and C.A. Randall: Cold sintering: A paradigm shift for processing and integration of ceramics. *Angew. Chem.* **55**, 11457–11461 (2016).
 59. H.-Y. Lee and R. Freer: The mechanism of abnormal grain growth in $\text{Sr}_{0.6}\text{Ba}_{0.4}\text{Nb}_2\text{O}_6$ ceramics. *J. Appl. Phys.* **81**, 376 (1997).
 60. T. Siegmund, F. Barthelat, R. Cipra, E. Habtour, and J. Riddick: Interlocked material assemblies manufacture and mechanics of topologically interlocked material assemblies. *Appl. Mech. Rev.* **68**, 40803 (2016).
 61. R.M. Erb, J. Segmehl, M. Schaffner, and A.R. Studart: Temporal response of magnetically labeled platelets under dynamic magnetic fields. *Soft Matter* **9**, 498–505 (2013).
 62. R.M. Erb, R. Libanori, N. Rothfuchs, and A.R. Studart: Composites reinforced in three dimensions by using low magnetic fields. *Science* **335**, 199–204 (2012).
 63. J.J. Martin, M.S. Riederer, D. Krebs, and R.M. Erb: Understanding and overcoming shear alignment of fibers during extrusion. *Soft Matter* **11**, 400–405 (2014).
 64. A. Garbin, I. Leibacher, P. Hahn, H. Le Ferrand, A.R. Studart, and J. Dual: Acoustophoresis of disk-shaped microparticles:

- A numerical and experimental study of acoustic radiation forces and torques. *J. Acoust. Soc. Am.* **138**, 2759–2769 (2015).
65. T. Schwarz, G. Petit-Pierre, and J. Dual: Rotation of non-spherical micro-particles by amplitude modulation of superimposed orthogonal ultrasonic modes. *J. Acoust. Soc. Am.* **133**, 1260–1268 (2013).
 66. J. Nguyen, S.A. Contera, and I.L. Garc: Magneto-electrical orientation of lipid-coated graphitic micro-particles in solution. *RCS Adv.* **6**, 46643 (2016).
 67. A.F. Demirörs: Magnetophoretic assembly of anisotropic colloids magnetophoretic assembly of anisotropic colloids for spatial control of reinforcement in composites. *J. Phys. Chem. B* **120**, 9759–9765 (2016).
 68. A.F. Demirörs, P.P. Pillai, B. Kowalczyk, and B.A. Grzybowski: Colloidal assembly directed by virtual magnetic moulds. *Nature* **503**, 99–103 (2013).
 69. O.D. Velev, S. Gangwal, and D.N. Petsev: Particle-localized AC and DC manipulation and electrokinetics. *Annu. Rep. Prog. Chem., Sect. C: Phys. Chem.* **105**, 213 (2009).
 70. A.F. Demirörs, D. Courty, R. Libanori, and A.R. Studart: Periodically microstructured composite films made by electric- and magnetic-directed colloidal assembly. *Proc. Natl. Acad. Sci. U. S. A.* **113**, 4623–4628 (2016).
 71. R.M. Erb, J. Segmehl, M. Charilaou, J.F. Löffler, and A.R. Studart: Non-linear alignment dynamics in suspensions of platelets under rotating magnetic fields. *Soft Matter* **8**, 7604 (2012).
 72. S. Behr, U. Vainio, M. Müller, A. Schreyer, and G.A. Schneider: Large-scale parallel alignment of platelet-shaped particles through gravitational sedimentation. *Sci. Rep.* **5**, 1–11 (2015).
 73. S. Mueller, E.W. Llewellyn, and H.M. Mader: The rheology of suspensions of solid particles. *Proc. R. Soc. A* **466**, 1201–1228 (2009).
 74. H. Watanabe, T. Kimura, and T. Yamaguchi: Particle orientation during tape casting in the fabrication of grain-oriented bismuth titanate. *J. Am. Ceram. Soc.* **72**, 289–293 (1989).
 75. A. Haake, A. Neild, G. Radziwill, and J. Dual: Positioning, displacement, and localization of cells using ultrasonic forces. *Biotechnol. Bioeng.* **92**, 8–14 (2005).
 76. G. Belijar, Z. Valdez-Nava, S. Diahm, L. Laudebat, T.B. Jones, and T. Lebey: Dynamics of particle chain formation in a liquid polymer under AC electric field: Modeling and experiments. *J. Phys. D: Appl. Phys.* **50**, 1–8 (2017).
 77. T.S. Suzuki, T. Uchikoshi, and Y. Sakka: Control of texture in alumina by colloidal processing in a strong magnetic field. *Sci. Technol. Adv. Mater.* **7**, 356–364 (2006).
 78. Y. Sakka and T.S. Suzuki: Textured development of feeble magnetic ceramics by colloidal processing under high magnetic field. *J. Ceram. Soc. Jpn.* **113**, 26–36 (2005).
 79. T.P. Niebel, F.J. Heiligtag, J. Kind, M. Zanini, A. Lauria, M. Niederberger, and A.R. Studart: Multifunctional microparticles with uniform magnetic coatings and tunable surface chemistry. *RSC Adv.* **4**, 62483–62491 (2014).
 80. R. Bjørk, A. Smith, and C.R.H. Bahl: Analysis of the magnetic field, force, and torque for two-dimensional Halbach cylinders. *J. Magn. Mater.* **322**, 133–141 (2010).
 81. H. Le Ferrand, S. Bolisetty, A. Demirörs, R. Libanori, A. Studart, and R. Mezzenga: Magnetic assembly of transparent and conducting graphene-based functional composites. *Nat. Commun.* **7**, 12078 (2016).
 82. H. Li, X. Peng, and W. Chen: Simulation of the chain-formation process in magnetic fields. *J. Intell. Mater. Syst. Struct.* **16**, 653–658 (2005).
 83. M. Leunissen, H. Vutukuri, C.K. Hall, and A. Blaaderen: Direct colloidal self-assembly with biaxial electric fields. *Adv. Mater.* **21**, 3116–3120 (2009).
 84. B. Bharti, F. Kogler, C.K. Hall, S.H.L. Klapp, and O.D. Velev: Multidirectional colloidal assembly in concurrent electric and magnetic fields. *Soft Matter* **12**, 7747–7758 (2016).
 85. F. Bouville, E. Maire, and S. Deville: Self-assembly of faceted particles triggered by a moving ice front. *Langmuir* **30**, 8656–8663 (2014).
 86. I.R. Peters, S. Majumdar, and H.M. Jaeger: Direct observation of dynamic shear jamming in dense suspensions. *Nature* **532**, 214–217 (2016).
 87. R.M. Erb, J.S. Sander, R. Grisch, and A.R. Studart: Self-shaping composites with programmable bioinspired microstructures. *Nat. Commun.* **4**, 1712 (2013).
 88. D. Kokkinis, M. Schaffner, and A.R. Studart: Multimaterial magnetically assisted 3D printing of composite materials. *Nat. Commun.* **6**, 8643 (2015).
 89. R.J. Pavlacka and G.L. Messing: Processing and mechanical response of highly textured Al₂O₃. *J. Eur. Ceram. Soc.* **30**, 2917–2925 (2010).
 90. F.L. Bargaradi, H. Le Ferrand, R. Libanori, and A.R. Studart: Bio-inspired self-shaping ceramics. *Nat. Commun.* **7**, 13912 (2016).
 91. L.J. Bonderer, A.R. Studart, J. Woltersdorf, E. Pippel, and L.J. Gauckler: Strong and ductile platelet-reinforced polymer films inspired by nature: Microstructure and mechanical properties. *J. Mater. Res.* **24**, 741–754 (2009).
 92. G.L. Messing, S. Trolier-McLinstry, E.M. Sabolsky, C. Duran, S. Kwon, B. Brahmaroutu, P. Park, H. Yilmaz, P.W. Rehrig, K.B. Eitel, E. Suvaci, and M. Seabaugh: Templated grain growth of textured piezoelectric ceramics. *Crit. Rev. Solid State Mater. Sci.* **29**, 45–96 (2004).
 93. H. Le Ferrand, F. Bouville, and A.R. Studart: Design principles for textured multi-layered composites using magnetically assisted slip casting. arXiv preprint (2018), arXiv:1808.01327.
 94. R. Pavlacka, R. Bermejo, Y. Chang, D.J. Green, and G.L. Messing: Fracture behavior of layered alumina microstructural composites with highly textured layers. *J. Am. Ceram. Soc.* **9** (2013).
 95. S. Deville, E. Saiz, R.K. Nalla, and A.P. Tomsia: Freezing as a path to build complex composites. *Science* **311**, 515–518 (2006).
 96. G.L. Messing, S.F. Poterala, Y.F. Chang, T. Frueh, E.R. Kupp, B.H. Watson, R.L. Walton, M.J. Brova, A. Hofer, R. Bemejo, and R.J. Meyer: Texture-engineered ceramics—Property enhancements through crystallographic tailoring. *J. Mater. Res.* **32**, 3219–3241 (2017).
 97. Y. Chang, R. Bermejo, O. Sevecek, and G.L. Messing: Design of alumina-zirconia composites with spatially tailored strength and toughness. *J. Eur. Ceram. Soc.* **35**, 631–640 (2015).
 98. S.F. Poterala, R.J. Meyer, Jr., and G.L. Messing: Low-field dynamic magnetic alignment and templated grain growth of diamagnetic PMN-PT ceramics. *J. Mater. Res.* **28**, 2960–2969 (2013).
 99. H. Bai, Y. Chen, B. Delattre, A.P. Tomsia, and R.O. Ritchie: Bioinspired large-scale aligned porous materials assembled with dual temperature gradients. *Sci. Adv.* **11**, 1–9 (2015).
 100. M.W. Pot, K.A. Faraj, A. Adawy, W.J.P. van Enckevort, H.T.B. van Moerkerk, E. Vlieg, W.F. Daamen, and T.H. van Kuppevelt: Versatile wedge-based system for the construction of unidirectional collagen scaffolds by directional freezing: Practical and theoretical considerations. *ACS Appl. Mater. Interfaces* **7**, 8495–8505 (2015).

101. M.M. Porter, P. Niksiar, and J. Mckittrick: Microstructural control of colloidal-based ceramics by directional solidification under weak magnetic fields. *J. Am. Ceram. Soc.* **10**, 1–10 (2016).
102. M.M. Porter, M. Yeh, J. Strawson, T. Goehring, S. Lujan, P. Siripapasotorn, M.A. Meyers, and J. Mckittrick: Magnetic freeze casting inspired by nature. *Mater. Sci. Eng., A* **556**, 741–750 (2012).
103. Y. Chen, J. Bunch, Z. Mao, and F. Chen: Novel functionally graded acicular electrode for solid oxide cells fabricated by the freeze-tape-casting process. *J. Power Sources* **213**, 93–99 (2012).
104. Y-W. Moon, K-H. Shin, Y-H. Koh, H-D. Jung, and H-E. Kim: Three-dimensional ceramic/camphene-based coextrusion for unidirectionally macrochanneled alumina ceramics with controlled porous walls. *J. Am. Ceram. Soc.* **97**, 32–34 (2014).
105. H. Le Ferrand, F. Bouville, T.P. Niebel, and A.R. Studart: Magnetically assisted slip casting of bioinspired heterogeneous composites. *Nat. Mater.* **14**, 1172–1179 (2015).
106. B.R. Marple and J. Boulanger: Graded casting of materials with continuous gradients. *J. Am. Ceram. Soc.* **77**, 2747–2750 (1994).
107. J.A. Mangels: Fabrication of complex shaped ceramic articles by slip casting and injection molding. In *Progress in Nitrogen Ceramics*, F.L. Riley, ed.; Nato ASI Series, Vol. 65, (Springer, Dordrecht, the Netherlands, 1983); pp. 711–715.
108. T.M. Llewellyn-Jones, B.W. Drinkwater, and R.S. Trask: 3D printed components with ultrasonically arranged microscale structure. *Smart Mater. Struct.* **25**, 1–6 (2016).
109. J.J. Martin, B.E. Fiore, and R.M. Erb: Designing bioinspired composite reinforcement architectures via 3D magnetic printing. *Nat. Commun.* **6**, 1–7 (2015).
110. E. Feilden, C. Ferraro, Q. Zhang, E. García-Tuñón, E. D’Elia, F. Giuliani, L. Vandeperre, and E. Saiz: 3D printing bioinspired ceramic composites. *Sci. Rep.* **7**, 13759 (2017).
111. J.R. Raney, B.G. Compton, J. Mueller, T.J. Ober, K. Shea, and J.A. Lewis: Rotational 3D printing of damage-tolerant composites with programmable mechanics. *Proc. Natl. Acad. Sci. U. S. A.*, **116**, 1198–1203 (2018).
112. L.J. Michot, I. Bihannic, S. Maddi, S.S. Funari, C. Baravian, P. Levitz, and P. Davidson: Liquid-crystalline aqueous clay suspensions. *Proc. Natl. Acad. Sci. U. S. A.* **103**, 16101–16104 (2006).
113. M. Vaudin: Crystallographic textures in ceramics and metals. *J. Res. Natl. Inst. Stand. Technol.* **106**, 1063–1069 (2001).
114. M. Liebi, M. Georgiadis, A. Menzel, P. Schneider, J. Kohlbrecher, O. Bunk, and M. Guizar-Sicairos: Nanostructure surveys of macroscopic specimens by small-angle scattering tensor tomography. *Nature* **527**, 349–352 (2015).
115. J.P. De Silva, D. Petermann, B. Kasmi, M. Impéror-Clerc, P. Davidson, B. Pansu, F. Meneau, J. Perez, E. Paineau, I. Bihannic, L.J. Michot, and C. Baravian: RheoSAXS studies of anisotropic complex fluids under shear. *J. Phys.: Conf. Ser.* **247**, 012052 (2010).
116. S.J.S. Qazi, A.R. Rennie, J.P. Wright, and J.K. Cockcroft: Alignment of plate-like particles in a colloidal dispersion under flow in a uniform pipe studied by high-energy X-ray diffraction. *Langmuir* **26**, 18701–18709 (2010).
117. F. Schaff, M. Bech, P. Zaslansky, C. Jud, M. Liebi, M. Guizar-Sicairos, and F. Pfeiffer: Six-dimensional real and reciprocal space small-angle X-ray scattering tomography. *Nature* **527**, 353–356 (2015).
118. R.J. Greasty, R.M. Richardson, S. Klein, D. Cherns, M.R. Thomas, C. Pizzey, N. Terrill, and C. Rochas: Electro-induced orientational ordering of anisotropic pigment nanoparticles. *Philos. Trans. R. Soc., A* **371**, 20120257 (2013).
119. Z. Rozynek, R.C. Castberg, A. Mikkelsen, and J.O. Fossum: Electric field nematic alignment of fluorohectorite clay particles in oligomeric matrices. *J. Mater. Res.* **28**, 1349–1355 (2013).
120. L.J. Bonderer, A.R. Studart, and L.J. Gauckler: Bioinspired design and assembly of platelet reinforced polymer films. *Science* **319**, 1069–1073 (2008).
121. W. Wagermaier, A. Gourrier, and B. Aichmayer: Understanding hierarchy and functions of bone using scanning X-ray scattering methods. In *Materials Design Inspired by Nature*, P. Fratzl, J.W.C. Dunlop, and R. Weinkamer, eds.; Book Series Smart Materials No. 4 (RSC Publishing, Cambridge, U.K., 2013); pp. 46–73.
122. S. Nemat-Nasser, H. Sadeghi, A.V. Amirkhizi, and A. Srivastava: Phononic layered composites for stress-wave attenuation. *Mech. Res. Commun.* **68**, 65–69 (2015).
123. F. Bouville, E. Maire, S. Meille, B. van de Moortèle, A.J. Stevenson, and S. Deville: Strong, tough and stiff bioinspired ceramics from brittle constituents. *Nat. Mater.* **13**, 508–512 (2014).
124. M. Mirkhalaf, A.K. Dastjerdi, and F. Barthelat: Overcoming the brittleness of glass through bio-inspiration and micro-architecture. *Nat. Commun.* **5**, 3166–3177 (2013).
125. M-K. Ahn, Y-W. Moon, W-Y. Maeng, Y-H. Koh, and H-E. Kim: Calcium phosphate ceramics with continuously gradient macrochannels using three-dimensional extrusion of bilayered ceramic-camphene mixture/pure camphene feedrod. *Ceram. Int.* **42**, 15603–15609 (2016).
126. S. Leo, C. Tallon, N. Stone, and G.V. Franks: Near-net-shaping methods for ceramic elements of (body) armor systems. *J. Am. Ceram. Soc.* **97**, 3013–3033 (2014).
127. H. Le Ferrand, F. Bouville, and A.R. Studart: Processing of dense bio-inspired ceramics with deliberate microtexture. arXiv preprint, arXiv:1807.04378 (2018).
128. E. Munch, M.E. Launey, D.H. Alsem, E. Saiz, A.P. Tomsia, and R.O. Ritchie: Tough, bio-inspired hybrid materials. *Science* **322**, 1516–1520 (2008).
129. Z. Xu, J. Huang, C. Zhang, S. Daryadel, A. Behroozfar, B. Mcwilliams, B. Boesl, A. Agarwal, and M. Minary-Jolandan: Bioinspired nacre-like ceramic with nickel inclusions fabricated by electroless plating and spark plasma sintering. *Adv. Eng. Mater.* **20**, 1–9 (2018).
130. M. Grossman, F. Bouville, F. Ermi, K. Masania, R. Libanori, and A.R. Studart: Mineral nano-interconnectivity stiffens and toughens nacre-like composite materials. *Adv. Mater.* **29**, 1605039 (2017).
131. L. Mao, H. Gao, H. Yao, L. Liu, H. Cölfen, G. Liu, S. Chen, S. Li, Y. Yan, Y. Liu, and S. Yu: Synthetic nacre by pre-designed matrix-directed mineralization. *Science* **8991**, 1–10 (2016).
132. H.L. Gao, S.M. Chen, L.B. Mao, Z.Q. Song, H. Bin Yao, H. Cölfen, X.S. Luo, F. Zhang, Z. Pan, Y.F. Meng, Y. Ni, and S.H. Yu: Mass production of bulk artificial nacre with excellent mechanical properties. *Nat. Commun.* **8**, 287–295 (2017).
133. N.F. Lepora, P. Verschure, and T.J. Prescott: The state of the art in biomimetics. *Bioinspiration Biomimetics* **8**, 013001 (2013).
134. K. Waniecek, P-E. Fayemi, N. Maranzana, C. Zollfrank, and S. Jacobs: Biomimetics and its tools. *Bioinspired, Biomimetic Nanobiomater.* **6**, 53–66 (2017).
135. T.P. Niebel, F. Bouville, D. Kokkinis, and A.R. Studart: Role of the polymer phase in the mechanics of nacre-like composites. *J. Mech. Phys. Solids* **96**, 133–146 (2016).
136. J. Yin, J. Huang, S. Zhang, H.W. Zhang, and B.S. Chen: Ultrawide low frequency band gap of phononic crystal in nacreous composite material. *Phys. Lett. A* **378**, 2436–2442 (2014).
137. D. Kokkinis, F. Bouville, and A.R. Studart: 3D printing of materials with tunable failure via bioinspired mechanical gradients. *Adv. Mater.* **30**, 1–9 (2018).