

# C-Hf (Carbon-Hafnium)

H. Okamoto

The Hf-C phase diagram in [Massalski2] was redrawn from [1990Oka] and is based primarily on the work of [1965Rud]. Several other investigators reported data on Hf-C phase boundaries, but, as reviewed by [1990Oka], the data were quite inconsistent. Figure 1 shows the Hf-C phase diagram calculated by [1997Bit]. The calculated phase boundaries agree well with experimental data of [1965Rud]. The diagram of [1997Bit] is probably better than the original diagram of [1965Rud], because the [1997Bit] diagram is based on thermodynamic data as well as on the phase boundary data.

## References

- 1965Rud:** E. Rudy: Technical Report AFML-TR-65-2 Part 1, 4 (AD472697), Air Force Materials Lab., Air Force Systems Command, Wright-Paterson Air Force Base, OH, 1965.
- 1990Oka:** H. Okamoto: *Bull. Alloy Phase Diagrams*, 1990, vol. 11 (4), pp. 396-403.
- 1997Bit:** H. Bittermann and P. Rogl: *J. Phase Equilibrium*, 1997, vol. 18 (4), pp. 344-56.

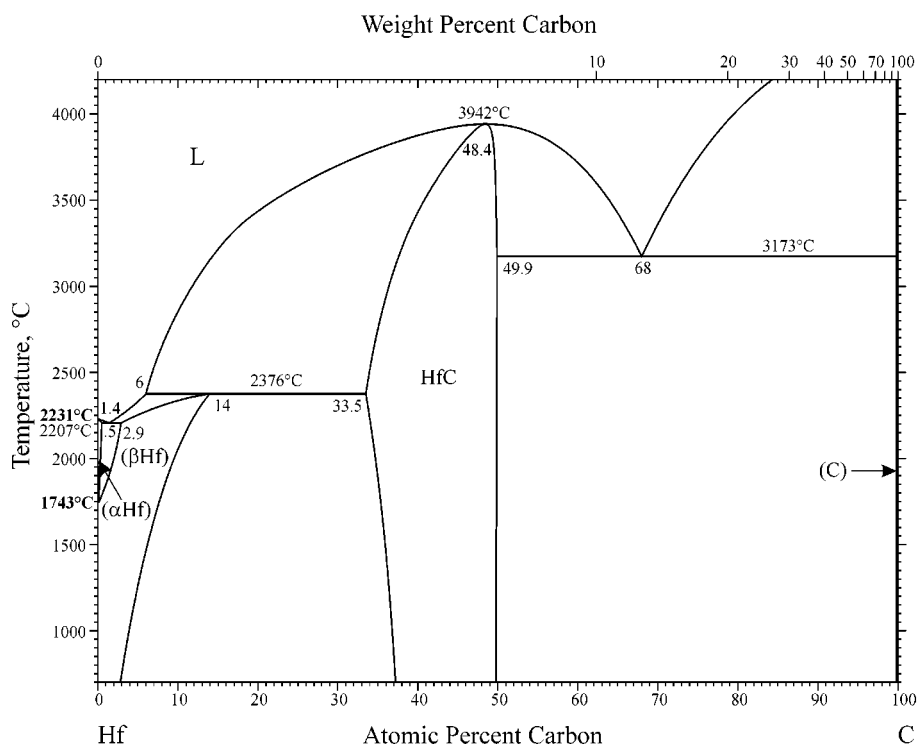


Fig. 1 C-Hf phase diagram