



ASO VISUAL ABSTRACT

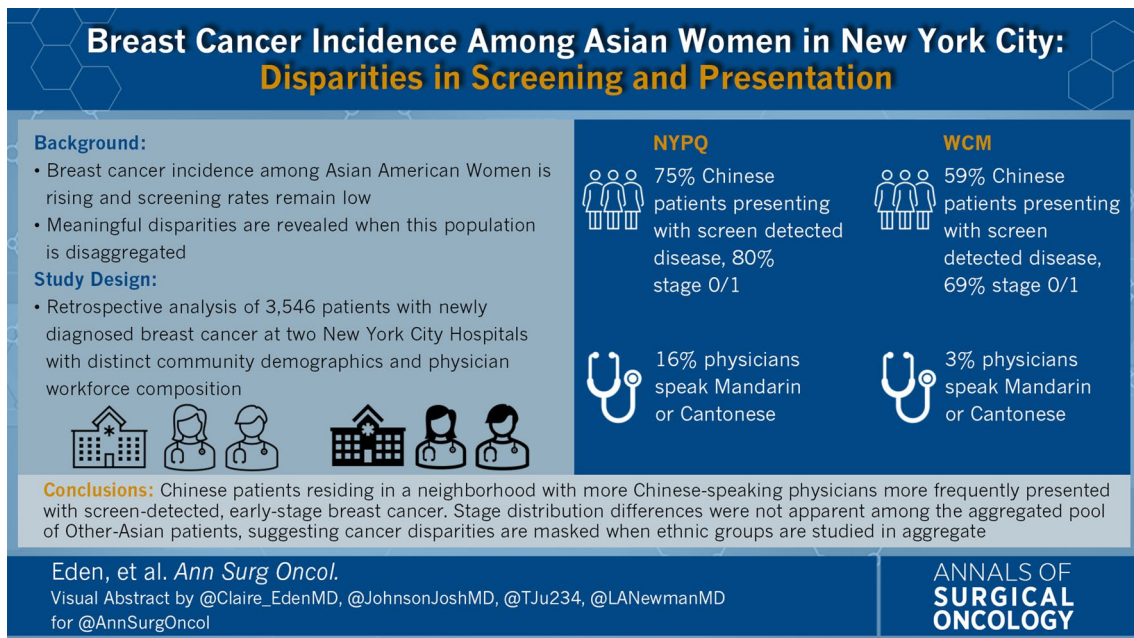
## ASO Visual Abstract: Breast Cancer Incidence Among Asian American Women in New York City—Disparities in Screening and Presentation

Claire M. Eden, MD<sup>1</sup>, Georgia Syrnioti, MD, MSc<sup>2</sup>, Josh Johnson, MD<sup>2</sup>, Genevieve Fasano, MD, MS<sup>2</sup>, Solange Bayard, MD, MS<sup>2</sup>, Chase Alston, MA<sup>2</sup>, Anni Liu, DMSc<sup>2</sup>, Xi Kathy Zhou, PhD, MS<sup>2</sup>, Tammy Ju, MD<sup>1</sup>, Lisa A. Newman, MD, MPH<sup>2</sup>, and Manmeet Malik, DO<sup>1</sup>

<sup>1</sup>Department of Surgery, New York Presbyterian Queens, Weill Cornell Medicine, Flushing, NY; <sup>2</sup>Department of Surgery, New York Presbyterian, Weill Cornell Medicine, New York, NY

We examined rates of mammographic-detected and early-stage breast cancer among patients at two hospital sites in New York City characterized by distinct communities (<https://doi.org/10.1245/s10434-023-14640-8>). More

Chinese patients presented with screen-detected and early-stage disease in a neighborhood with more Chinese-speaking physicians.



**Publisher's Note** Springer Nature remains neutral with regard to jurisdictional claims in published maps and institutional affiliations.