



ASO VISUAL ABSTRACT

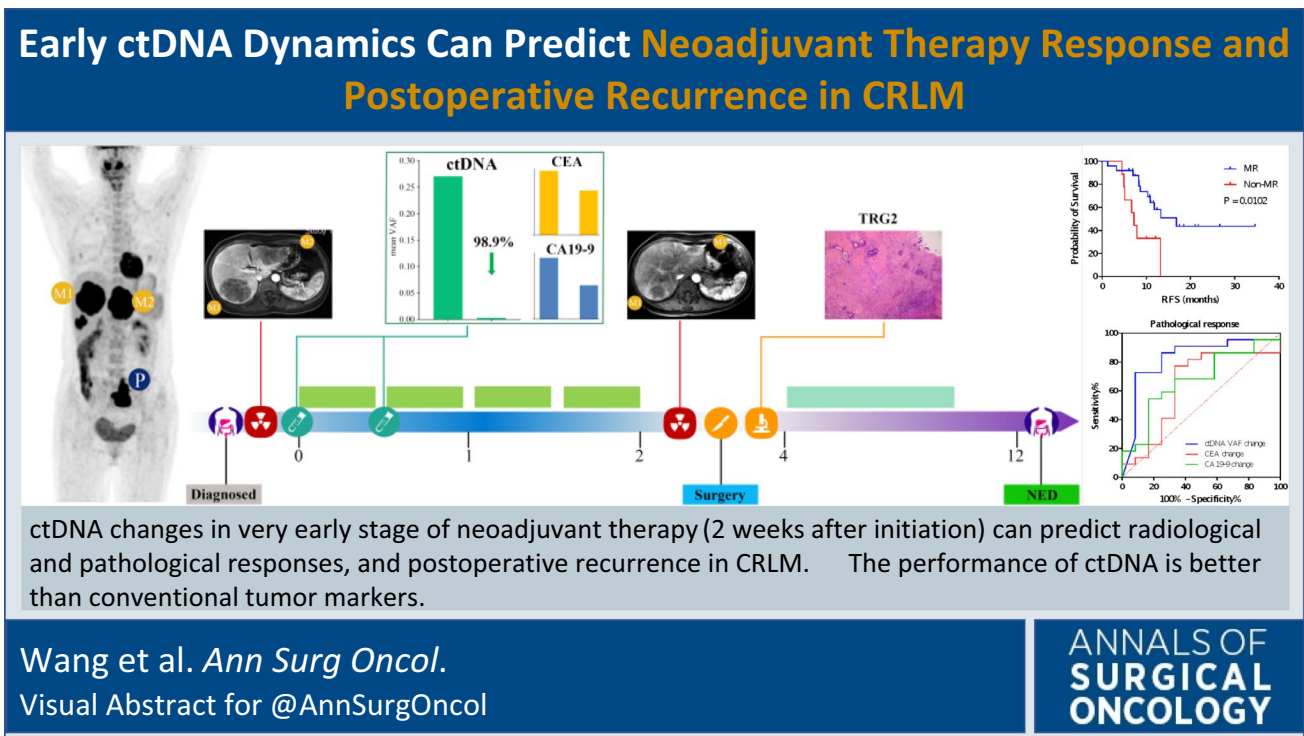
ASO Visual Abstract: Early Circulating Tumor DNA Dynamics Predict Neoadjuvant Therapy Response and Recurrence in Colorectal Liver Metastases—A Prospective Study

Xiang-Yu Wang, MD, PhD¹, Rui Zhang, MD¹, Jia-Hao Han, MD¹, Shi-Qing Chen, PhD², Fei-Long Zhao, PhD², Hui Chen, PhD², Jing Lin, MD¹, Jie Fan, MD, PhD³, Wen-Wei Zhu, MD, PhD¹, Lu Lu, MD, PhD¹, and Jin-Hong Chen, MD, PhD¹

¹Department of General Surgery, Huashan Hospital, Fudan University, Shanghai, China; ²Department of Medical Affairs, 3D Medicines Inc., Shanghai, China; ³Department of Pathology, Huashan Hospital, Fudan University, Shanghai, China

In this prospective study (<https://doi.org/10.1245/s10434-023-13604-2>), the authors revealed that ctDNA changes in the very early stage of neoadjuvant therapy (2 weeks

after initiation) can predict radiological and pathological responses as well as postoperative recurrence. The performance of ctDNA is better than conventional tumor markers.



Xiang-Yu Wang, Rui Zhang, Jia-Hao Han and Shi-Qing Chen have contributed equally to this work.

Publisher's Note Springer Nature remains neutral with regard to jurisdictional claims in published maps and institutional affiliations.

© Society of Surgical Oncology 2023

Published online: 20 May 2023
J.-H. Chen, MD, PhD
e-mail: jinhongch@hotmail.com