



ASO VISUAL ABSTRACT

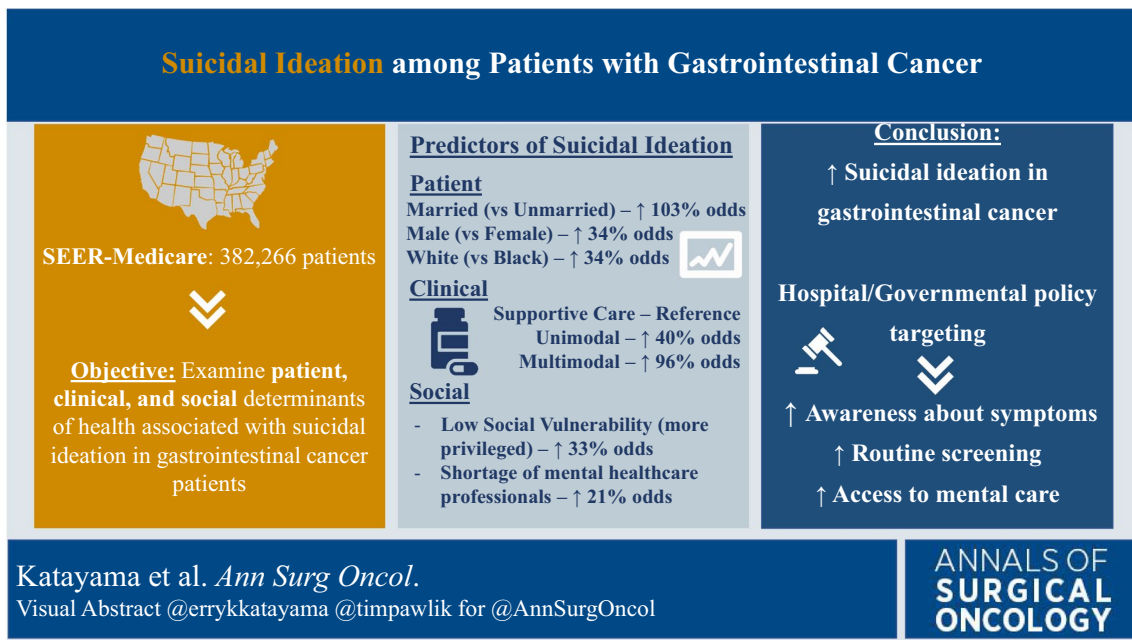
## ASO Visual Abstract: Suicidal Ideation Among Patients with Gastrointestinal Cancer

Erryk S. Katayama, BA, Zorays Moazzam, MD, Selamawit Woldesenbet, PhD, Henrique A. Lima, MD, Yutaka Endo, MD, PhD, Lovette Azap, BS, Jason Yang, BS, Mary Dillhoff, MD, Aslam Ejaz, MD, Jordan Cloyd, MD, and Timothy M. Pawlik, MD, PhD, MPH, MTS, MBA, FACS, FRACS (Hon.)<sup>ID</sup>

Department of Surgery, The Ohio State University Wexner Medical Center and James Comprehensive Cancer Center, Columbus, OH

This study (<https://doi.org/10.1245/s10434-023-13471-x>) highlights the burden of mental illness and suicidal ideation in patients with gastrointestinal cancer. Single, white males

living in privilege were at highest risk of suicidal ideation. Policies ensuring routine screening and equitable mental healthcare access must be prioritized.



**FUNDING** None.

**DISCLOSURE** None.

**Publisher's Note** Springer Nature remains neutral with regard to jurisdictional claims in published maps and institutional affiliations.