



ASO VISUAL ABSTRACT

ASO Visual Abstract: Changes in the Gustave Roussy Immune Score as a Powerful Prognostic Marker of the Therapeutic Sensitivity of Nivolumab in Advanced Gastric Cancer: A Multicenter, Retrospective Study

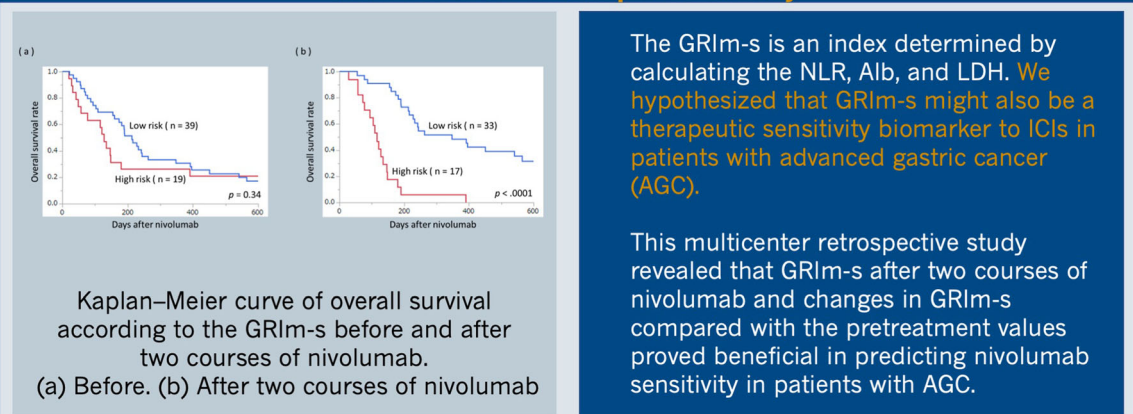
Nobuhiro Nakazawa, MD, PhD¹, Makoto Sohda, MD, PhD¹, Yasunari Ubukata, MD, PhD¹, Kengo Kuriyama, MD, PhD¹, Akiharu Kimura, MD, PhD¹, Norimichi Kogure, MD, PhD¹, Hisashi Hosaka, MD, PhD², Atsushi Naganuma, MD, PhD³, Masanori Sekiguchi, MD, PhD⁴, Kana Saito, MD, PhD⁵, Kyoichi Ogata, MD, PhD¹, Akihiko Sano, MD, PhD¹, Makoto Sakai, MD, PhD¹, Hiroomi Ogawa, MD, PhD¹, Ken Shirabe, MD, PhD, FACS¹, and Hiroshi Saeki, MD, PhD, FACS¹

¹Department of General Surgical Science, Graduate School of Medicine, Gunma University, Maebashi, Gunma, Japan; ²Department of Gastroenterology, Gunma Prefectural Cancer Center, Ohta, Gunma, Japan; ³Department of Gastroenterology, National Hospital Organization Takasaki General Medical Center, Takasaki, Gunma, Japan; ⁴Department of Gastroenterology, Isesaki Municipal Hospital, Isesaki, Gunma, Japan; ⁵Department of Surgery, Japan Community Healthcare Organization Gunma Central Hospital, Maebashi, Gunma, Japan

Our multicenter, retrospective study revealed that GRIm-s after two courses of nivolumab and changes in GRIm-s compared with the pretreatment values proved

beneficial in predicting nivolumab sensitivity in patients with advanced gastric cancer (<https://doi.org/10.1245/s10434-022-12226-4>).

Changes in the Gustave Roussy Immune Score as a Powerful Prognostic Marker of the Therapeutic Sensitivity of Nivolumab in Advanced Gastric Cancer: A Multicenter Retrospective Study



Nobuhiro Nakazawa, et al. *Ann Surg Oncol*.
Visual Abstract for @AnnSurgOncol

ANNALS OF
**SURGICAL
ONCOLOGY**