



ASO VISUAL ABSTRACT

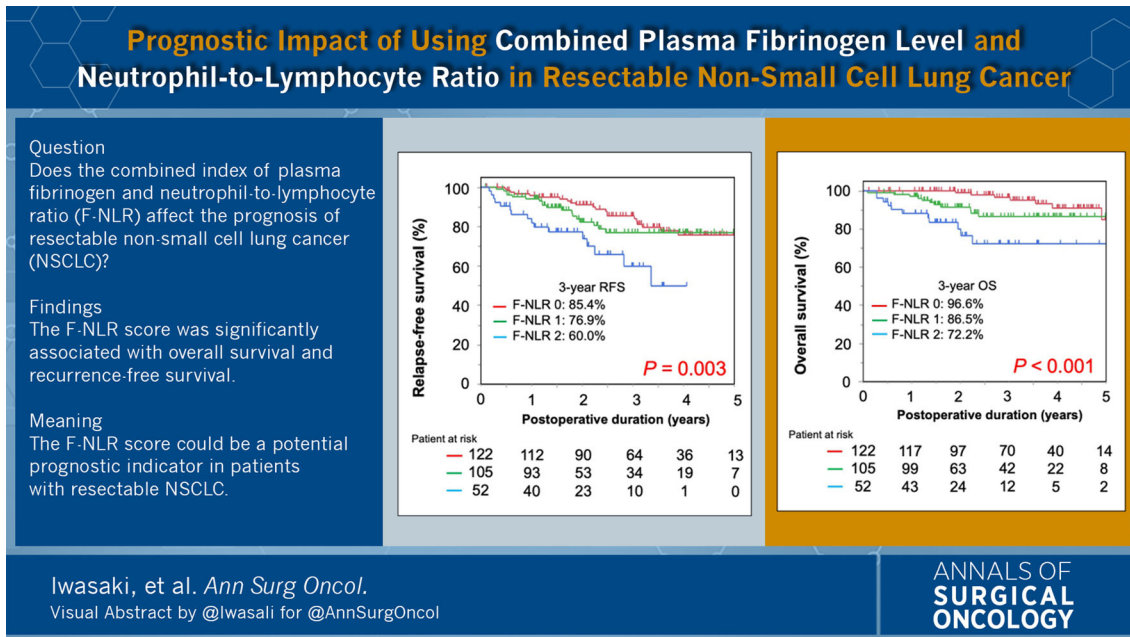
ASO Visual Abstract: Prognostic Impact of Using Combined Plasma Fibrinogen Level and Neutrophil-to-Lymphocyte Ratio in Resectable Non-small Cell Lung Cancer

Masashi Iwasaki, MD^{1,2}, Shunta Ishihara, MD, PhD¹, Satoru Okada, MD, PhD¹, Reona Shimegi, MD¹, Masanori Shimomura, MD, PhD¹, and Masayoshi Inoue, MD, PhD¹

¹Division of Thoracic Surgery, Department of Surgery, Graduate School of Medical Science, Kyoto Prefectural University of Medicine, Kyoto, Japan; ²Department of General Surgery, Kumihama Hospital, Kyoto, Japan

Combined plasma fibrinogen level and neutrophil-to-lymphocyte ratio is a convenient and useful prognostic

indicator in lung cancer treatment (<https://doi.org/10.1245/s10434-022-11835-3>).



Iwasaki, et al. *Ann Surg Oncol*.
Visual Abstract by @Iwasaki for @AnnSurgOncol

FUNDING None.

DISCLOSURE There are no conflict of interest.

© Society of Surgical Oncology 2022
Published Online: 3 June 2022

M. Inoue, MD, PhD
e-mail: mainoue@koto.kpu-m.ac.jp

Publisher's Note Springer Nature remains neutral with regard to jurisdictional claims in published maps and institutional affiliations.