



ASO VISUAL ABSTRACT

ASO Visual Abstract: Impact of Endocrine Therapy Adherence on Outcomes in Elderly Women With Early-Stage Breast Cancer Undergoing Lumpectomy Without Radiotherapy

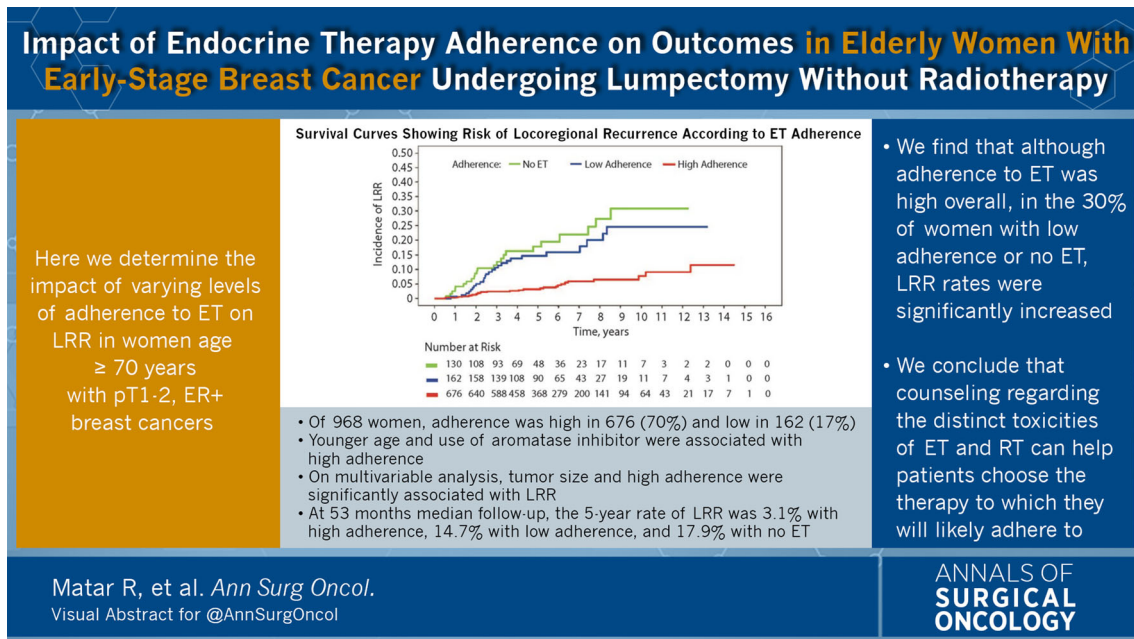
Regina Matar, MD¹, Varadan Sevilimedu, MBBS, DrPH², Mary L. Gemignani, MD¹, and Monica Morrow, MD¹

¹Breast Service, Department of Surgery, Memorial Sloan Kettering Cancer Center, New York, NY; ²Biostatistics Service, Department of Epidemiology and Biostatistics, Memorial Sloan Kettering Cancer Center, New York, NY

We evaluated the impact of endocrine therapy adherence on locoregional recurrence (LRR) in elderly women with pT1-2, estrogen receptor-positive breast cancers post-lumpectomy managed without radiotherapy (<https://doi.org/10.1245/s10434-022-11728-5>).

LRR rates were significantly elevated in women with no or low adherence, suggesting a potential role for radiotherapy.

DISCLOSURE The preparation of this study was supported in part



by NIH/NCI Cancer Center Support Grant No. P30CA008748 to Memorial Sloan Kettering Cancer Center. Monica Morrow has received speaking honoraria from Exact Sciences and Roche. Regina Matar, Varadan Sevilimedu, and Mary L. Gemignani have no conflicts of interest to disclose.

Publisher's Note Springer Nature remains neutral with regard to jurisdictional claims in published maps and institutional affiliations.