



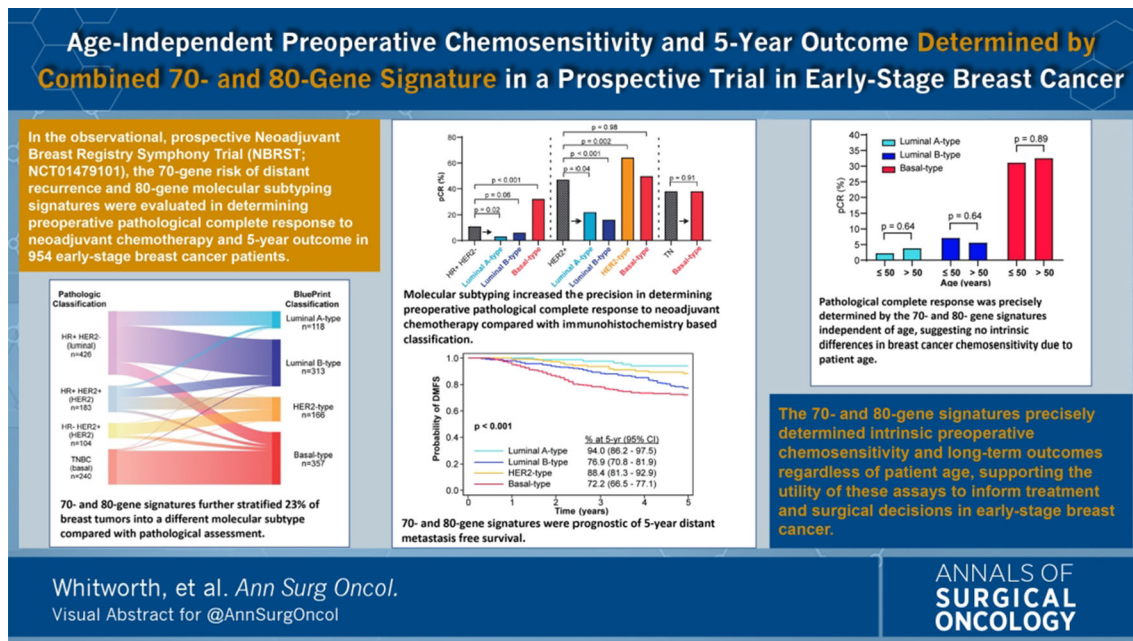
## ASO Visual Abstract: Age-Independent Preoperative Chemosensitivity and 5-Year Outcome Determined by Combined 70- and 80-Gene Signature in a Prospective Trial in Early-Stage Breast Cancer

Pat Whitworth, MD, FACS, FSSO<sup>1,2</sup>, Peter D. Beitsch, MD, FACS<sup>2,3</sup>, James V. Pellicane, MD<sup>4</sup>, Paul L. Baron, MD<sup>5,6</sup>, Laura A. Lee, MD<sup>7</sup>, Carrie L. Dul, MD<sup>8</sup>, Charles H. Nash III, MD<sup>9</sup>, Mary K. Murray, MD, FACS<sup>10,11</sup>, Paul D. Richards, MD, FACP<sup>12</sup>, Mark Gittleman, MD<sup>13</sup>, Raye Budway, MD<sup>14</sup>, Rakhshanda Layeequr Rahman, MD<sup>15</sup>, Pond Kelemen, MD<sup>16,17</sup>, William C. Dooley, MD, FACS<sup>18,19</sup>, David T. Rock, MD<sup>20,21</sup>, Ken H. Cowan, MD<sup>22</sup>, Beth-Ann Lesnikoski, MD, FACS<sup>23,24</sup>, Julie L. Barone, DO<sup>25,26</sup>, Andrew Y. Ashikari, MD, FACS<sup>16,27,28,29</sup>, Beth Dupree, MD<sup>30</sup>, Shiyu Wang, MS<sup>31</sup>, Andrea R. Menicucci, PhD<sup>31</sup>, Erin B. Yoder, MS<sup>31</sup>, Christine Finn, BS<sup>31</sup>, Kate Corcoran, MPH<sup>31</sup>, Lisa E. Blumencranz, PhD<sup>31</sup>, William Audeh, MD<sup>31</sup>, and NBRST Investigators Group

<sup>1</sup>Nashville Breast Center, Nashville, TN; <sup>2</sup>Targeted Medical Education, Cupertino, CA; <sup>3</sup>Dallas Surgical Group, Dallas, TX; <sup>4</sup>Bon Secours Cancer Institute, Richmond, VA; <sup>5</sup>Breast and Melanoma Specialist of Charleston, Charleston, SC; <sup>6</sup>Lenox Hill Hospital/Northwell Health, New York, NY; <sup>7</sup>Comprehensive Cancer Center, Palm Springs, CA; <sup>8</sup>Ascension St. John Hospital Great Lakes Cancer Management Specialists, Grosse Pointe Woods, MI; <sup>9</sup>Northeast Georgia Medical Center, Gainesville, GA; <sup>10</sup>Akron General Medical Center, Akron, OH; <sup>11</sup>Cleveland Clinic Akron General, Akron, OH; <sup>12</sup>Blue Ridge Cancer Center, Roanoke, VA; <sup>13</sup>Breast Care Specialists, Allentown, PA; <sup>14</sup>St. Clair Hospital, Pittsburgh, PA; <sup>15</sup>Texas Tech University, Lubbock, TX; <sup>16</sup>Ashikari Breast Center, Sleepy Hollow, NY; <sup>17</sup>Zucker School of Medicine, Hofstra University, Hempstead, NY; <sup>18</sup>BreastInstitute, University of Oklahoma Health Sciences, Oklahoma City, OK; <sup>19</sup>Stephenson Cancer Center, Oklahoma City, OK; <sup>20</sup>Regional Breast Care, Fort Myers, FL; <sup>21</sup>Genesis Care, Fort Myers, FL; <sup>22</sup>University of Nebraska Medical Center, Omaha, NE; <sup>23</sup>The Breast Institute at JFK Medical Center, Atlantis, FL; <sup>24</sup>Baptist MD Anderson Cancer Center, Jacksonville, FL; <sup>25</sup>Exempla Saint Joseph Hospital, Denver, CO; <sup>26</sup>Vail Health, Vail, CO; <sup>27</sup>New York Medical College, Valhalla, NY; <sup>28</sup>Northwell Health Physician Partners, Mount Kisco, NY; <sup>29</sup>Phelps and Northern Westchester Hospitals, Westchester, NY; <sup>30</sup>St. Mary Medical Alliance Cancer Specialists, Langhorne, PA; <sup>31</sup>Medical Affairs, Agendia Inc., Irvine, CA

In this observational, prospective cohort study (Neoadjuvant Breast Symphony Trial [NBRST]; <https://doi.org/10.1245/s10434-022-11666-2>), NBRST, the 70-gene risk of distant recurrence and 80-gene molecular subtyping signatures precisely determined preoperative pathological

complete response to neoadjuvant chemotherapy and 5-year overall survival and distant-metastasis free survival in 954 early-stage breast cancer patients, independent of age or menopausal status.



**DISCLOSURES** PW, WCD, KHC, CHN, PDR, and BL have contracted research with Agendia Inc. PW serves on the advisory board of Medtronic, Lumicell, ImpediMed, Cianna Medical, Prelude, and Bard Bard; has contracted research with Invitae, Intact, Prelude; has ownership interests in Targeted Medical Education, Reverse Medical, Rebound Medical, Lazarus, Cerebrotech, and Medneon; receives honoraria from Medtronic; and has received travel/accommodations from ImpediMed. JVP receives honoraria as part of Speaker's Bureau for Agendia Inc. WCD has ownership interests in Shaga Medical, LLC. SW, ARM, EBY, CF, KC, LEB, and WA are non-commercial employees of Agendia Inc. No other disclosures have been reported.

**OPEN ACCESS** This article is licensed under a Creative Commons Attribution 4.0 International License, which permits use, sharing,

adaptation, distribution and reproduction in any medium or format, as long as you give appropriate credit to the original author(s) and the source, provide a link to the Creative Commons licence, and indicate if changes were made. The images or other third party material in this article are included in the article's Creative Commons licence, unless indicated otherwise in a credit line to the material. If material is not included in the article's Creative Commons licence and your intended use is not permitted by statutory regulation or exceeds the permitted use, you will need to obtain permission directly from the copyright holder. To view a copy of this licence, visit <http://creativecommons.org/licenses/by/4.0/>.

**Publisher's Note** Springer Nature remains neutral with regard to jurisdictional claims in published maps and institutional affiliations.