



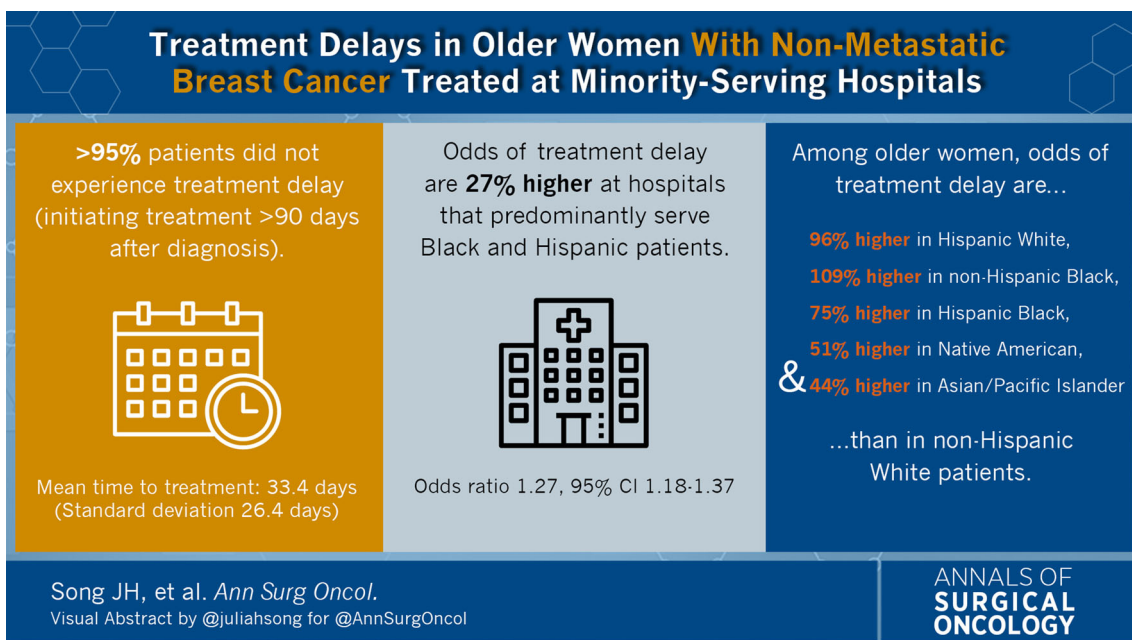
## ASO Visual Abstract: Race and Site of Care Impact Treatment Delays for Older Women with Non-Metastatic Breast Cancer

Julia H. Song, BA<sup>1,2</sup>, Olga Kantor, MD, MS<sup>3,4</sup>, Elizabeth A. Mittendorf, MD, PhD<sup>3,4</sup>, Tari A. King, MD<sup>3,4</sup>, and Christina A. Minami, MD, MS<sup>2,3,4</sup>

<sup>1</sup>Harvard Medical School, Boston, MA; <sup>2</sup>Center for Surgery and Public Health, Brigham and Women's Hospital, Boston, MA; <sup>3</sup>Division of Breast Surgery, Brigham and Women's Hospital, Boston, MA; <sup>4</sup>Breast Oncology Program, Dana-Farber/Brigham and Women's Cancer Center, Boston, MA

This article (<https://doi.org/10.1245/s10434-022-11543-y>) focuses on the association between race/ethnicity and breast cancer treatment delays among older women.

Although more than 95% of women received timely treatment, minorities and those treated at minority-serving hospitals were more likely to experience treatment delays.



**DISCLOSURE** Tari King is a speaker and advisory board member for Exact Sciences, formerly Genomic Health, and serves on the faculty of Precisca cancer information service. The remaining authors have no conflicts of interest.