



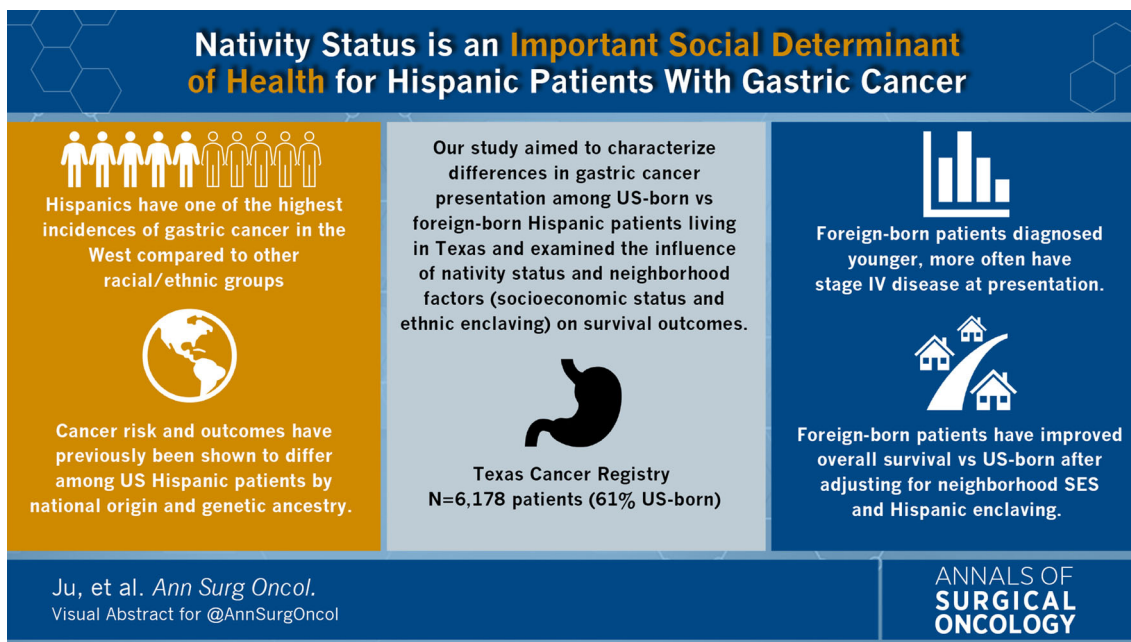
ASO VISUAL ABSTRACT

ASO Visual Abstract: Nativity Status is an Important Social Determinant of Health for Hispanic Patients with Gastric Cancer in Texas

Michelle R. Ju, MD¹, John D. Karalis, MD¹, Archana Bhat, MS³, Hong Zhu, Ph.D.², Timothy Hogan, Ph.D.², Courtney Balentine, MD³, Adam C. Yopp, MD¹, Patricio M. Polanco, MD¹, Sam C. Wang, MD¹, Herbert J. Zeh III, MD¹, and Matthew R. Porembka, MD¹

¹Division of Surgical Oncology, Department of Surgery, University of Texas Southwestern Medical Center, Dallas, TX; ²Department of Population and Data Sciences, University of Texas Southwestern Medical Center, Dallas, TX; ³Surgical Center for Outcomes, Implementation, and Novel Interventions (S-COIN), Department of Surgery, University of Texas Southwestern Medical Center, Dallas, TX

Gastric cancer presentation and survival differ significantly among Hispanic patients by nativity status. Foreign-born patients have improved survival versus patients born in the USA (HR 0.90, 95% CI 0.82–0.99) (<https://doi.org/10.1245/s10434-021-11188-3>).



DISCLOSURE None of the authors have conflicts of interest to disclose.

© Society of Surgical Oncology 2022

Published Online: 10 March 2022

M. R. Porembka, MD

e-mail: matthew.porembka@utsouthwestern.edu

Publisher's Note Springer Nature remains neutral with regard to jurisdictional claims in published maps and institutional affiliations.