



ASO VISUAL ABSTRACT

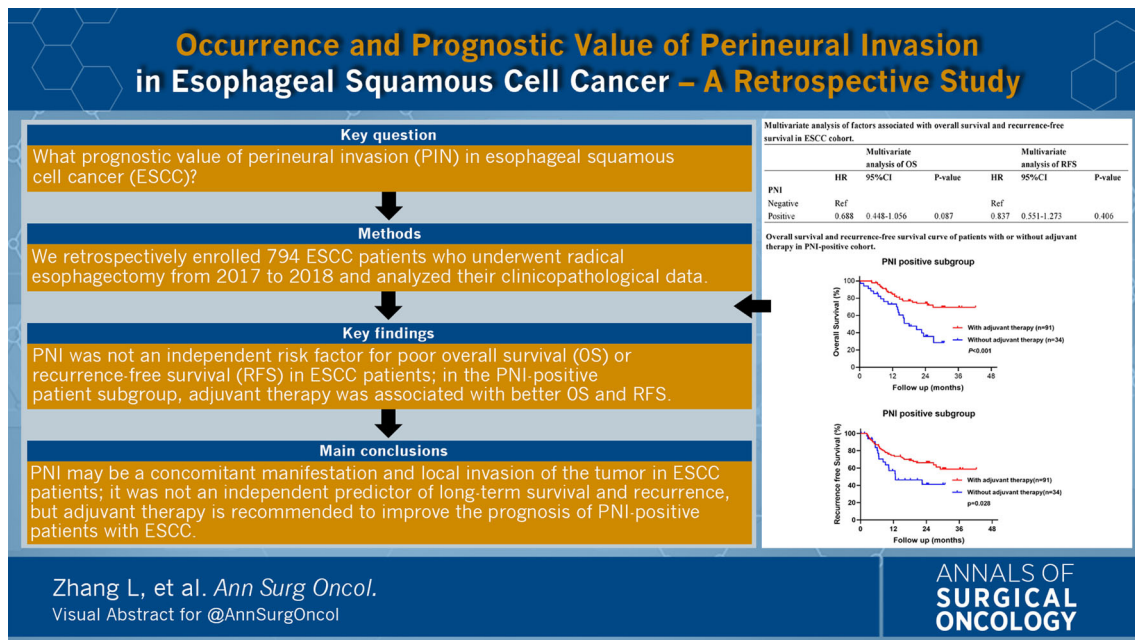
ASO Visual Abstract: Occurrence and Prognostic Value of Perineural Invasion in Esophageal Squamous Cell Cancer: A Retrospective Study

Long Zhang, MD¹, Jinchao Shao, PhD², Zhichao Liu, MD¹, Jie Pan, MD¹, Bin Li, PhD¹, Yang Yang, PhD¹, Yi He, PhD¹, Yuchen Han, PhD², and Zhigang Li, PhD¹

¹Department of Thoracic Surgery, Section of Esophageal Surgery, Shanghai Chest Hospital, Shanghai Jiao Tong University, Shanghai, China; ²Department of Pathology, Shanghai Chest Hospital, Shanghai Jiao Tong University, Shanghai, China

Our study investigated the prognostic value of perineural invasion in esophageal squamous cell carcinoma by reviewing and analyzing the clinicopatho-

logical data of patients treated with upfront esophagectomy (<https://doi.org/10.1245/s10434-021-10665-z>).



Long Zhang, Jinchao Shao, and Zhichao Liu contributed equally to this paper.

Publisher's Note Springer Nature remains neutral with regard to jurisdictional claims in published maps and institutional affiliations.

© Society of Surgical Oncology 2021

Published Online: 3 September 2021

Y. Han
e-mail: ychan@cmu.edu.cn

Z. Li
e-mail: zhigang.li@shchest.org