



ASO VISUAL ABSTRACT

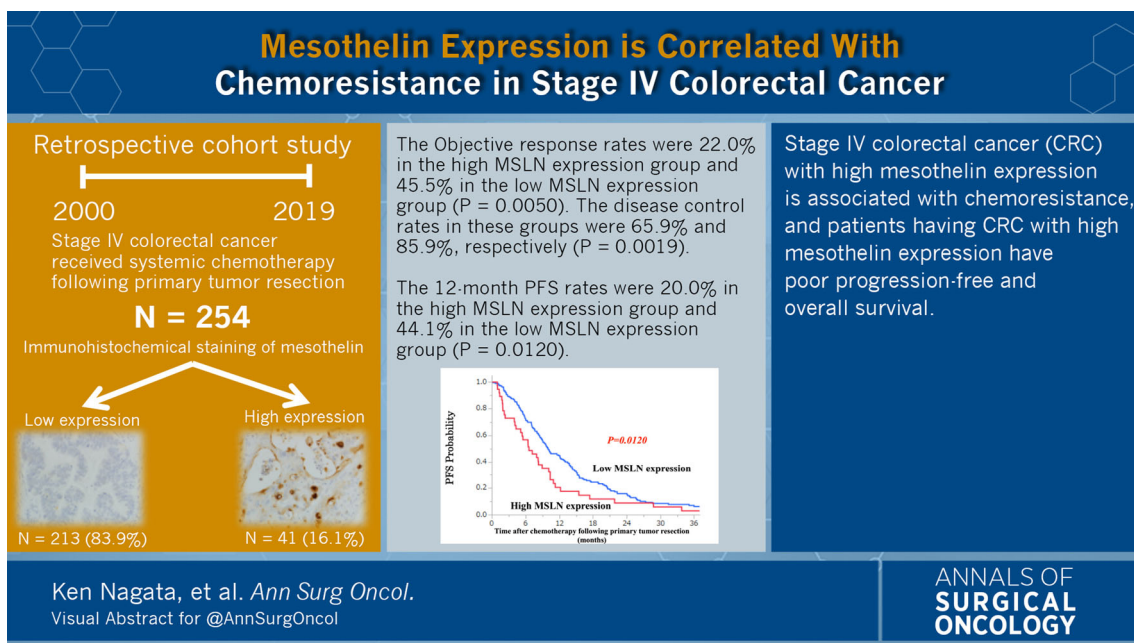
## ASO Visual Abstract: Mesothelin Expression is Correlated with Chemoresistance in Stage IV Colorectal Cancer

Ken Nagata, MD, Eiji Shinto, MD, PhD, Takehiro Shiraishi, MD, Masato Yamadera, MD, PhD, Yoshiki Kajiwara, MD, PhD, Satsuki Mochizuki, PhD, Koichi Okamoto, MD, PhD, Takahiro Einama, MD, PhD, Yoji Kishi, MD, PhD, and Hideki Ueno, MD, PhD

Department of Surgery, National Defense Medical College, Tokorozawa, Saitama, Japan

In our article (<https://doi.org/10.1245/s10434-021-10507-y>), we discuss that stage IV colorectal cancer (CRC) with high mesothelin expression is associated with chemore-

sistance, and patients having CRC with high mesothelin expression have poor progression-free and overall survival.



**DISCLOSURE** The authors disclose that they have no significant relationships with or financial interest in any commercial companies related to this article.

**Publisher's Note** Springer Nature remains neutral with regard to jurisdictional claims in published maps and institutional affiliations.