



ASO Visual Abstract: Blood Vessel Invasion Predicts Postoperative Survival Outcomes and Systemic Recurrence Regardless of Location or Blood Vessel Type in Patients with Lung Adenocarcinoma

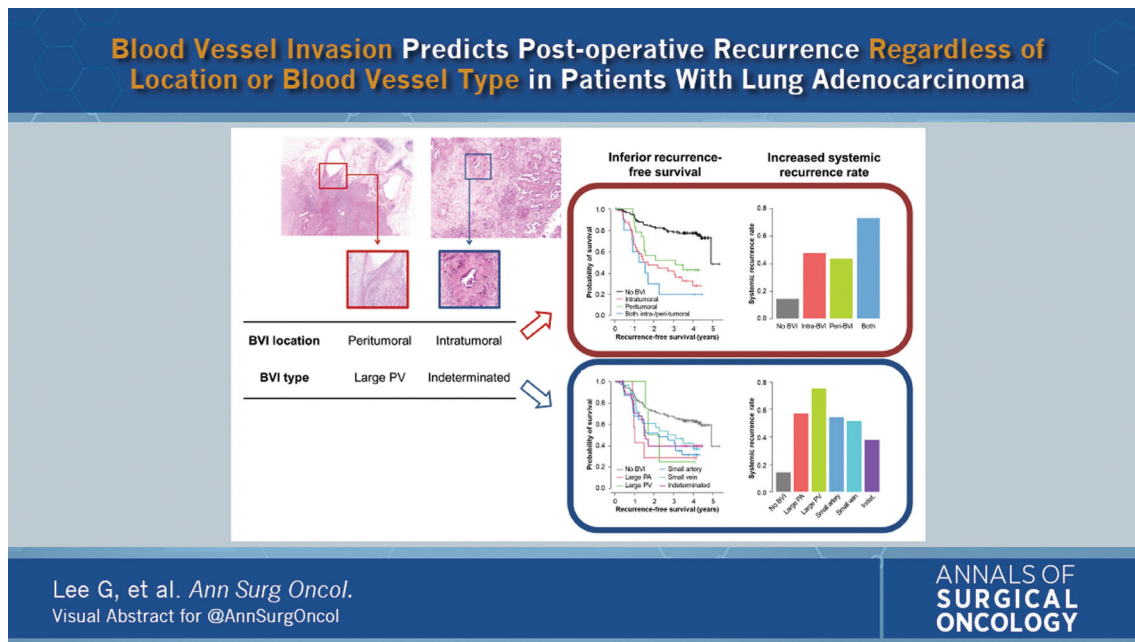
Goeun Lee, MD¹, Shinkyoo Yoon, MD², Bokyung Ahn, MD, PhD¹, Hyeong-Ryul Kim, MD, PhD³, Se Jin Jang, MD, PhD¹, and Hee Sang Hwang, MD, PhD¹

¹Department of Pathology, Asan Medical Center, University of Ulsan College of Medicine, Seoul, Republic of Korea;
²Department of Oncology, Asan Medical Center, University of Ulsan College of Medicine, Seoul, Republic of Korea;
³Department of Chest surgery, Asan Medical Center, University of Ulsan College of Medicine, Seoul, Republic of Korea

Regardless of the location or type of involved blood vessels, blood vessel invasion can predict systemic recurrence rate and survival outcomes in surgically resected lung adenocarcinoma (<https://doi.org/10.1245/s10434-021-10122-x>).

DISCLOSURE The authors declare no conflicts of interest.

Publisher's Note Springer Nature remains neutral with regard to jurisdictional claims in published maps and institutional affiliations.



Lee G, et al. *Ann Surg Oncol*.
Visual Abstract for @AnnSurgOncol

ANNALS OF
**SURGICAL
ONCOLOGY**