

Oxidative stress-induced Notch1 signaling promotes cardiogenic gene expression in mesenchymal stem cells

Boopathy *et al.*

RESEARCH

Open Access

Oxidative stress-induced Notch1 signaling promotes cardiogenic gene expression in mesenchymal stem cells

Archana V Boopathy^{1,2,3}, Karl D Pendergrass^{1,2,3}, Pao Lin Che^{1,2,3}, Young-Sup Yoon^{3,4} and Michael E Davis^{1,2,3,4*}

Abstract

Introduction: Administration of bone marrow-derived mesenchymal stem cells (MSCs) after myocardial infarction (MI) results in modest functional improvements. However; the effect of microenvironment changes after MI, such as elevated levels of oxidative stress on cardiogenic gene expression of MSCs, remains unclear.

Methods: MSCs were isolated from the bone marrow of adult rats and treated for 1 week with H₂O₂ (0.1 to 100 μ M) or 48 hours with glucose oxidase (GOX; 0 to 5 mU/ml) to mimic long-term pulsed or short-term continuous levels of H₂O₂, respectively.

Results: In 100 μ M H₂O₂ or 5 mU/ml GOX-treated MSCs, mRNA expression of selected endothelial genes (*Flt1*, *vWF*, *PECAM1*), and early cardiac marker (*nkx2-5*, *aMHC*) increased significantly, whereas early smooth muscle markers (*smooth muscle α -actin* and *sm22a*) and fibroblast marker *vimentin* decreased, as measured with real-time PCR. Interestingly, mRNA expression and activity of the cell-surface receptor Notch1 were significantly increased, as were its downstream targets, *Hes5* and *Hey1*. Co-treatment of MSCs with 100 μ M H₂O₂ and a γ -secretase inhibitor that prevents Notch signaling abrogated the increase in cardiac and endothelial genes, while augmenting the decrease in smooth muscle markers. Further, on GOX treatment, a significant increase in *Wnt11*, a downstream target of Notch1, was observed. Similar results were obtained with adult rat cardiac-derived progenitor cells.

Conclusions: These data suggest that H₂O₂- or GOX-mediated oxidative stress upregulates Notch1 signaling, which promotes cardiogenic gene expression in adult stem/progenitor cells, possibly involving *Wnt11*. Modulating the balance between Notch activation and H₂O₂-mediated oxidative stress may lead to improved adult stem cell-based therapies for cardiac repair and regeneration.

Keywords: Cardiac progenitor cells, Gene expression, Glucose oxidase, Hydrogen peroxide, Mesenchymal stem cells, Notch1

Introduction

Cardiovascular disease is the leading cause of global morbidity and mortality [1]. Among cardiovascular diseases, myocardial infarction (MI) leads to irreversible damage to the myocardium and progressive loss of function, eventually leading to heart failure. Although many therapies attempt to improve functionality of the heart, the only

cure for heart failure is cardiac transplantation. Owing to low availability of donor hearts, newer treatments that restore tissue and function are greatly needed. Although studies have shown functional improvement on injection of various stem cells, the precise molecular mechanism responsible for the improvement is unclear. Accumulating lines of evidence indicate beneficial effects of bone-marrow-derived mesenchymal stem cells (MSCs) for treating MI in small- and large-animal studies [2]. Whereas MSCs are capable of differentiating into multiple lineages [3], on delivery to the heart after acute MI, cardiogenic (all cell types in the myocardium) differentiation was noted [4]. Additionally, several studies have shown improvements

* Correspondence: michael.davis@bme.emory.edu

¹Wallace H. Coulter Department of Biomedical Engineering, Emory University and Georgia Institute of Technology, 101 Woodruff Circle, Suite 2001, Atlanta, GA 30322, USA

²Interdisciplinary BioEngineering Program, Georgia Institute of Technology, Atlanta, GA 30332, USA

Full list of author information is available at the end of the article

in cardiac function after MI either by endogenous bone marrow [5] or by augmenting this endogenous MSC response via injection of Granulocyte-macrophage colony-stimulating factor (GM-CSF) and other stem cell-mobilizing factors [6]. Finally, early human clinical trials demonstrated modest, yet significant, improvements in cardiac performance after MSC administration [7,8].

Extensive published studies demonstrate significant increases in reactive oxygen species (ROS) almost immediately after an acute MI. Elevated levels of ROS have deleterious effects on the cardiovascular system and are critical in the pathophysiology of heart failure. Potential sources of ROS in the myocardium include the NADPH oxidases of fibroblasts and infiltrating inflammatory cells, as well as the myocytes themselves [9]. Ischemic injury further elevates ROS production in these cells, which may influence differentiation of endogenous or implanted stem cells at the infarct site. Although effects of ROS on cardiac cell death, remodeling, and function are well studied, stem and progenitor cells that could be used for potential regeneration have both adaptive and maladaptive responses to oxidative stress. For example, acute bursts of ROS to embryonic stem cells (ESCs) in culture facilitate differentiation toward the cardiomyocyte phenotype, whereas prolonged exposure to H₂O₂ inhibits differentiation [10]. Although the effect of ROS on certain stem cell types is fairly established, the exact signaling pathways regulated by ROS, especially in the cardiogenic differentiation of stem cells, are under intensive investigation. Thus, pinpointing the exact signals modulated by ROS, leading to alterations in MSC differentiation, is of great therapeutic interest.

One of the major signaling pathways involved in stem cell differentiation is the Notch signaling pathway. Notch signaling is an evolutionarily conserved intercellular communication pathway that regulates diverse cellular processes, ranging from cell-fate decision, differentiation, and proliferation to apoptosis. Activation of the Notch receptor by adjacent cell surface-bound ligands of the Jagged and Delta family leads to proteolytic cleavage and nuclear translocation of the Notch intracellular domain (NICD) and subsequent transcriptional regulation of target genes, leading to maintenance of cells in an uncommitted state or induction of cell-type-specific differentiation [11]. Notch signaling promotes early cardiac development [12] and has also been identified to precede heart regeneration in zebrafish [13]. Further, certain mutations in Notch ligands or receptors are associated with embryonic lethality in mice [14]. Apart from regulating normal development and damage-induced repair, Notch signaling has also been found to promote cardiomyocyte survival [15]. Notch activation has been shown to promote cardiac gene expression in circulating endothelial progenitor cells [16], bone-marrow derived MSCs [17],

and cardiac progenitors [18], while attenuating cardiac differentiation of embryonic stem cells [19].

The effects of Notch signaling on different cell types are well studied, but its regulation by oxidative stress is unknown. We therefore sought to determine the role of oxidative stress on cardiogenic gene expression in MSCs and whether Notch signaling plays a role in directing differentiation of MSCs in the setting of elevated local H₂O₂ levels after MI. Our data suggest that H₂O₂ or glucose oxidase-mediated oxidative stress promotes cardiogenic differentiation in adult stem/progenitor cells through upregulation of Notch1 signaling, possibly involving Wnt11.

Materials and methods

Mesenchymal stem cell isolation

Mesenchymal stem cells were obtained from the femur and tibia of adult male Sprague–Dawley rats with Percoll density gradient centrifugation and adherence to tissue-culture flasks. MSCs were used from passages 2 to 4 cultured on Minimal Essential Media alpha (MEM α ; Hyclone, Logan, USA) supplemented with 20% fetal bovine serum (Hyclone), L-glutamine (Cellgro, Mediatech, USA), and 100 U penicillin-streptomycin (Invitrogen, Carlsbad, USA).

Trilineage differentiation of MSCs

To determine the trilineage differentiation capacity, the MSCs were cultured in adipogenic (SR811D250; Amsbio, Abingdon, UK), osteogenic (SR417D250; Amsbio), or chondrogenic (SC00B5-2; Vitro Biopharma, Golden, USA) media for 21 days with media replenishment every 3 days. The MSCs were also cultured for 1 week \pm 100 μ M H₂O₂. To demonstrate adipogenic differentiation, the cells were stained with 0.3% Oil Red O (O0625; Sigma, St. Louis, USA) in isopropanol for 30 minutes and rinsed with PBS. For osteogenic differentiation, the cells were stained with 1% alizarin red (500–4; RiccaChem, Arlington, USA) for 15 minutes. For chondrogenic differentiation, cells were stained with 0.5% toluidine blue O in PBS (198161-5G; Sigma). The stained cells were imaged under a phase-contrast microscope (Olympus, Pittsburgh, USA).

Cardiac progenitor cell isolation

Cardiac progenitor cells (CPCs) were isolated from the hearts of adult male Sprague–Dawley rats by selection of cKit⁺ cells with anti-cKit antibody (H-300; Santa Cruz, Dallas, USA)-coated magnetic beads (Dynal, Carlsbad, USA), as previously described [20].

Characterization of MSCs and CPCs

The surface expression of c-kit (H-300; Santa Cruz), CD45 (Invitrogen), CD34 (sc-7324; Santa Cruz), CD73 (551123; BD Pharmingen, San Jose, USA), CD90 (554898; BD Pharmingen, San Jose, USA), and CD105 (bs-0579R; Bioss,

Denver, USA) in MSCs and expression of c-kit and the transcription factors nkx2-5 (sc-14033; Santa Cruz), and gata4 (sc-9053; SantaCruz) in CPCs was determined with flow analysis by using an FACSCalibur (Becton Dickinson, New Jersey, USA). The isotypes of each antibody served as the negative control.

Induction of oxidative stress in MSCs and CPCs

To induce acute oxidative stress, MSCs or CPCs were cultured in serum-free media with Insulin/Transferrin/Selenium (ITS) containing H₂O₂ (0 to 100 μ M; Fisher Scientific, New Hampshire, USA) for 1 week, or glucose oxidase (0 to 5 mU/ml; Sigma) for 48 hours. Media was replenished every day with fresh media with or without H₂O₂. MSC and CPC growth media contain 5.5 mM and 10 mM glucose, respectively, and the addition of GOX results in continuous generation of H₂O₂.

Gene expression

Total RNA was isolated by using the QIA RNeasy kit (Qiagen, Valencia, USA) as per manufacturer's instructions. First-strand cDNA was synthesized as described [21]. Quantitative real-time PCR was performed on a StepOne Plus real-time PCR system (Applied Biosystems, Carlsbad, USA) by using specific primers for the cardiogenic and Notch1-related genes (see Additional file 1, Table S1). Gene-expression data were normalized to GAPDH in the H₂O₂-treated MSCs and to 18S in the GOX-treated MSCs. GAPDH is a gene involved in glucose metabolism and, as addition of glucose oxidase (GOX) alters the glucose levels in the media, 18S and not GAPDH was used as the housekeeping gene for studies involving GOX.

Protein expression

MSCs were treated with or without 5 mU/ml GOX for 48 hours. The protein expression of α -MHC (ab50967; Abcam, Cambridge, UK), Flt1 (ab32152; Abcam, Cambridge, UK), and smooth muscle α -actin (SAB250093; Sigma) was determined with flow analysis by using an FACSCalibur (Becton Dickinson). Primary antibodies were used at 1:300, and appropriate secondary antibodies were used at 1:500 with isotype controls.

Measurement of Notch intracellular domain

Total protein was isolated as described [21]. Equal amounts of protein were loaded on 4% to 15% SDS-PAGE gradient gel (Bio-Rad, Berkeley, USA). After transfer, the nitrocellulose membrane was probed with anti-Notch intracellular domain (Cell Signaling, Beverly, USA) antibody. A horseradish peroxidase-conjugated goat anti-rabbit secondary antibody was used (Bio-Rad), and chemiluminescent signals were obtained on a Kodak Imager Station 4000 MM Pro (Carestream Molecular

Imaging, Rochester, USA). NICD protein levels were normalized to GAPDH (Santa Cruz).

Chemical inhibition of Notch signaling

MSCs were treated with a γ -secretase inhibitor IX DAPT (*N*-[*N*-(3,5-difluorophenacetyl-L-alanyl)]-*S*-phenylglycine *t*-butyl ester; Calbiochem, Billerica, USA, 10 μ M) every day for 1 week to inhibit Notch1 activation in MSCs \pm H₂O₂. On day 7, RNA and protein were harvested for subsequent qRT-PCR and Western blotting, respectively.

siRNA-mediated knockdown of Notch1

To determine the optimal transfection reagent, MSCs were transfected with 100 nM mock siRNA labeled with Cy3 for 48 hours by using oligofectamine (Life Technologies, Carlsbad, USA), HiPerfect (Qiagen), or Lipofectamine RNAimax (Life Technologies), according to the manufacturer's instructions. The transfection efficiency was determined with flow analysis (FACSCalibur; Becton Dickinson) and fluorescent microscopy (Nikon). To knockdown Notch1 expression in MSCs, the cells were transfected with 25 nM either QIAgen Allstar Negative control siRNA (siNC) or QIA siNotch1 (S101920730) with oligofectamine (Life Technologies), according to the manufacturer's instructions. After 48 hours, RNA and protein were harvested for subsequent qRT-PCR and Western blotting, respectively.

Gene-expression analysis with PCR array

Based on the manufacturer's instructions, the Qiagen Rat Notch PCR Array PARN-059A was used to analyze gene expression in MSCs treated with or without 5 mU/ml GOX.

Statistical analysis

All data are expressed as mean \pm SEM. To determine significance, either an analysis of variance (ANOVA) was done followed by the appropriate *post hoc* test, or a Student *t* test was performed by using GraphPad Prism5. A *P* value <0.05 was considered significant.

Results

Characterization of mesenchymal stem cells

Mesenchymal stem cells (MSCs) had a spindle-shaped, fibroblast-like morphology and expressed common mesenchymal cell-surface markers, c-Kit, CD73, CD90, and CD105, with low expression of the hematopoietic markers CD45 and CD34 (Figure 1B). To determine the multipotent trilineage differentiation capacity, the MSCs were cultured for 21 days in media that promote differentiation into adipogenic, osteogenic, and chondrogenic lineages. As shown in Figure 1A, the MSCs differentiated into the three lineages, as demonstrated by staining for oil red O, alizarin red, and toluidine blue, respectively. Moreover, treatment with 100 μ M H₂O₂ for 1

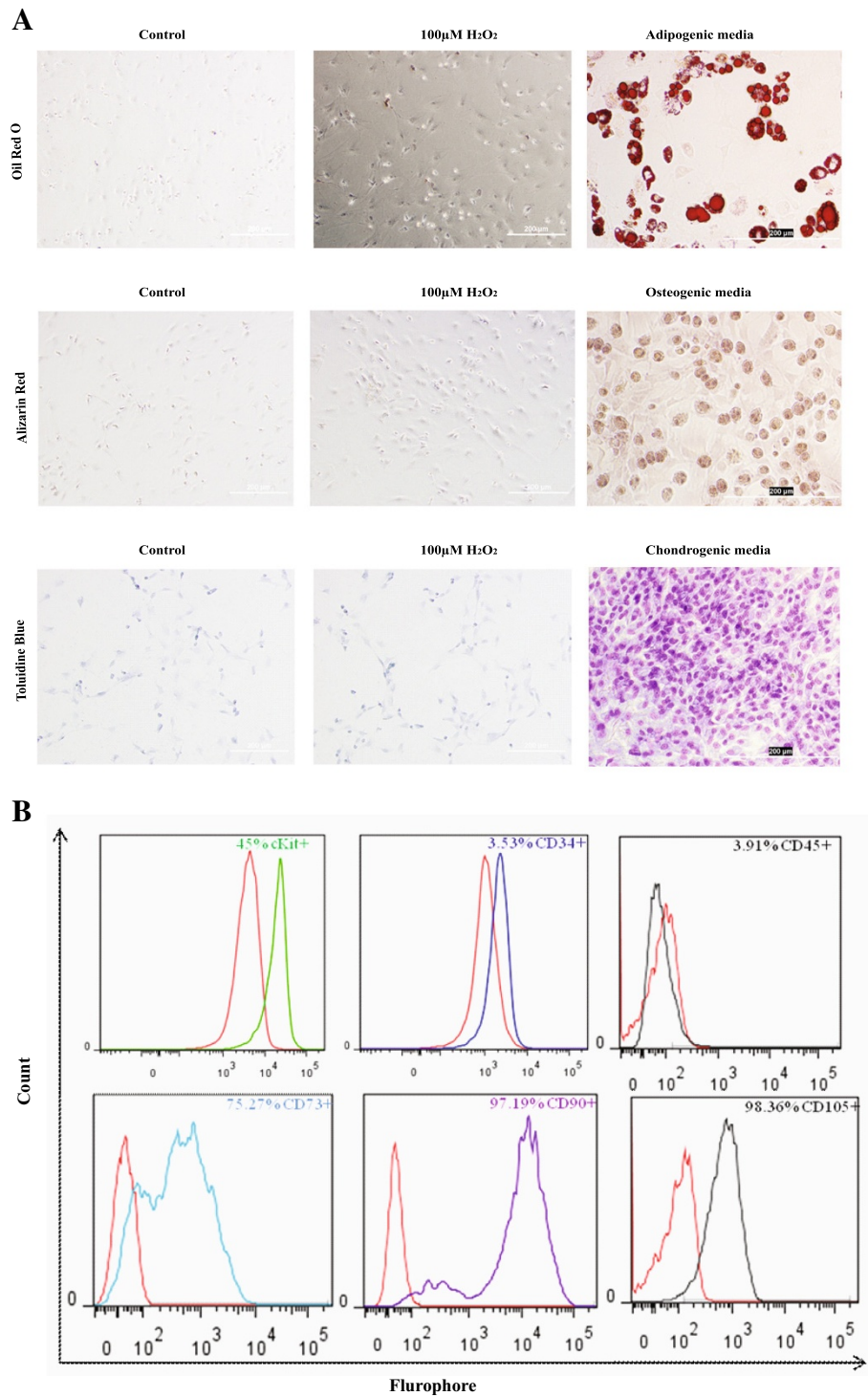


Figure 1 Characterization of mesenchymal stem cells. (A) The trilineage differentiation potential of the mesenchymal stem cells (MSCs) cultured on adipogenic, osteogenic, and chondrogenic media or $\pm 100 \mu\text{M}$ H₂O₂ was assessed with oil red O, alizarin red, and toluidine blue staining, respectively. (B) The MSCs isolated from rat bone marrow were culture expanded, and the percentage of positive cells expressing cKit, CD34, CD45, CD73, CD90, and CD105 was determined with flow analysis. Scale bar, 200 μm .

week did not induce trilineage differentiation, indicating that the MSCs are multipotent, but H₂O₂ treatment does not promote differentiation into adipogenic, osteogenic, or chondrogenic lineages.

H₂O₂ or glucose oxidase treatment increases early endothelial gene expression in MSCs

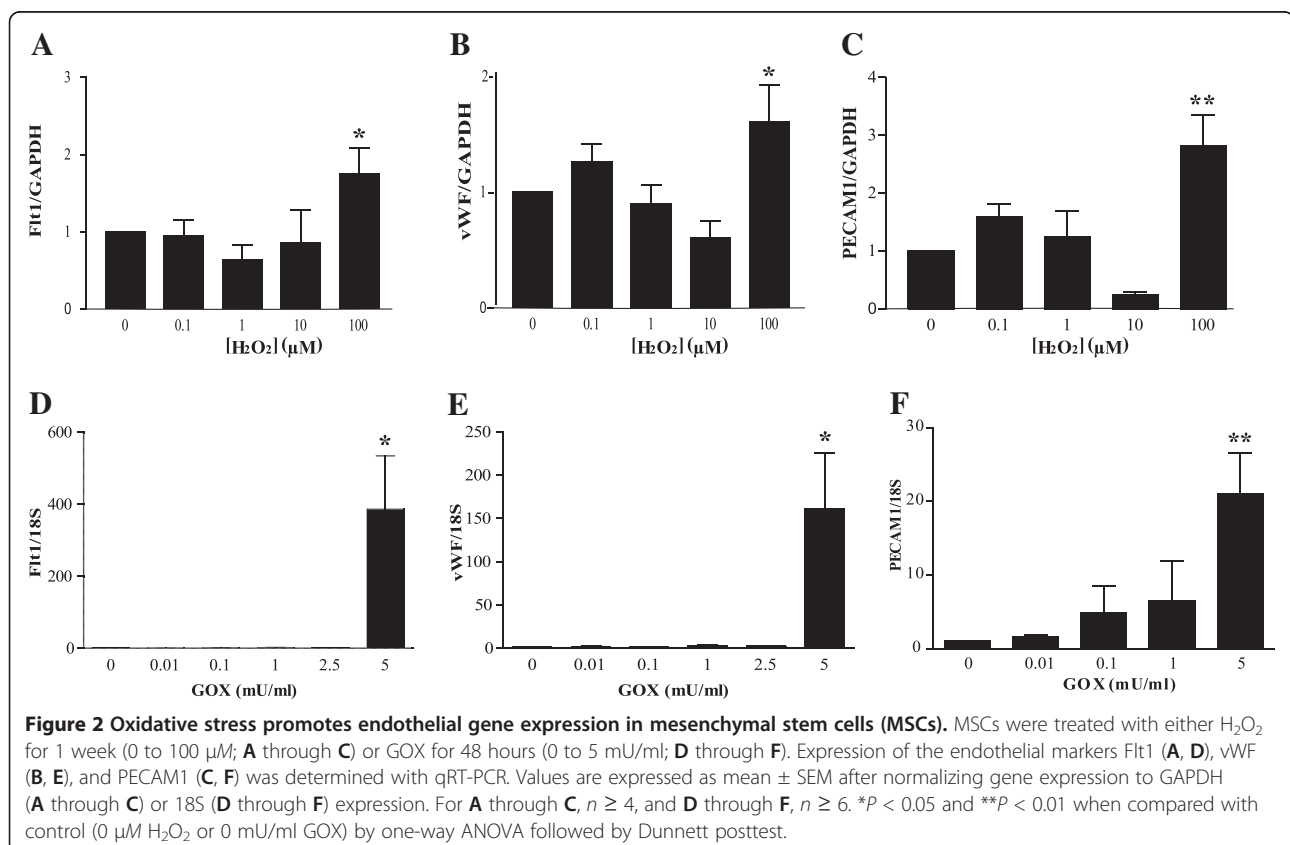
To determine whether H₂O₂ or glucose oxidase (GOX)-mediated oxidative stress regulates endothelial gene expression, bone marrow-derived MSCs were cultured in media containing hydrogen peroxide (H₂O₂; 0 to 100 μM) for 1 week or glucose oxidase (GOX; 0 to 5 mU/ml) for 48 hours. The mRNA expression of VEGF receptor *Flt1*, *vWF*, and *PECAM1* after exposure to H₂O₂ or GOX was quantified with qRT-PCR. Although no effect was due to lower levels of H₂O₂ (0.1 to 10 μM), high levels (100 μM) significantly increased the expression of *Flt1* by twofold ($P < 0.05$; Figure 2A), *vWF* by almost 2-fold ($P < 0.05$; Figure 2B), and *PECAM1* by 3-fold ($P < 0.01$; Figure 2C). In MSCs treated with GOX for 48 hours, no change in gene expression was seen at the lower doses (0.01 to 2.5 mU/ml). However, at 5 mU/ml, a significant increase in expression of *Flt1* by 400-fold ($P < 0.05$; Figure 2D), *vWF* by 150-fold ($P < 0.05$; Figure 2E), and *PECAM1* by 20-fold ($P < 0.01$; Figure 2F) was observed.

H₂O₂ or glucose oxidase treatment increases early cardiac gene expression in MSCs

To determine whether H₂O₂ or GOX-mediated oxidative stress regulates cardiac gene expression, we measured levels of early cardiac markers *nkx2-5* and α -myosin heavy chain (*α MHC*). Whereas treatment of MSCs with low levels of H₂O₂ (0.1 to 10 μM) had no effect on *α MHC* levels, treatment with 100 μM H₂O₂ significantly increased expression by 2-fold ($P < 0.05$; Figure 3A) compared with time-matched, untreated controls. To confirm with another early cardiac marker, *nkx2-5*, gene expression was measured. As shown in Figure 3B, the expression of *nkx2-5* increased by nearly 2-fold ($P < 0.05$) in 100 μM H₂O₂-treated MSCs. In MSCs treated with GOX for 48 hours, no change in gene expression was seen at the lower doses (0.01 to 2.5 mU/ml). In MSCs treated with 5 mU/ml GOX, a 30-fold increase in expression of *α MHC* ($P < 0.001$; Figure 3C) was observed, along with a 75-fold increase in *nkx2-5* expression ($P < 0.05$; Figure 3D).

H₂O₂ or glucose oxidase treatment negatively modulates smooth muscle and fibroblast gene expression in MSCs

To identify whether H₂O₂ regulated expression of smooth muscle markers, the levels of the early smooth muscle markers, smooth muscle α -actin (*sm α -actin*) and the



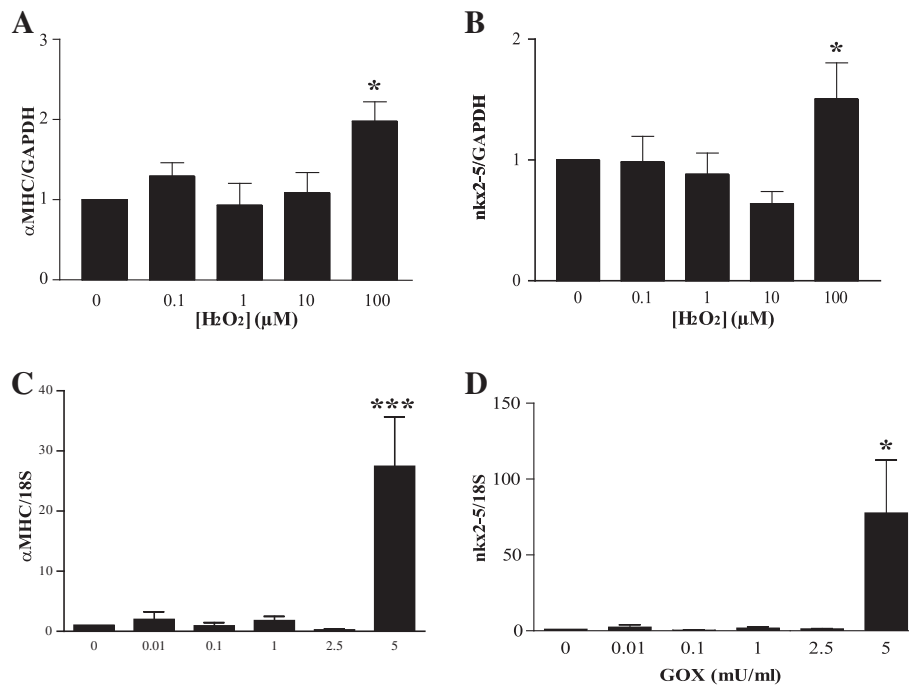


Figure 3 Oxidative stress regulates cardiac gene expression in mesenchymal stem cells (MSCs). MSCs were treated with either H_2O_2 for 1 week (0 to 100 μ M; **A, B**) or GOX for 48 hours (0 to 5 mU/ml; **C, D**). Expression of the cardiac markers α MHC (**A, C**) and nkx2-5 (**B, D**) was determined with qRT-PCR. Values are expressed as mean \pm SEM after normalizing gene expression to GAPDH (**A, B**) or 18S (**C, D**) expression. For **A** and **B**, $n \geq 4$; **C** and **D**, $n \geq 5$. * $P < 0.05$ and *** $P < 0.001$ when compared with control (0 μ M H_2O_2 or 0 mU/ml GOX) with one-way ANOVA followed by Dunnett posttest.

calponin-related protein *sm22 α* were examined. Treatment with 100 μ M H_2O_2 significantly decreased expression of *sm α -actin* by 3-fold ($P < 0.01$; Figure 4A) and *sm22 α* expression by 2-fold ($P < 0.01$; Figure 4B). Similarly, the expression of vimentin, an intermediate-filament protein characteristic of fibroblasts, was significantly decreased by 1.5-fold in both 1 μ M ($P < 0.05$) and 100 μ M H_2O_2 -treated MSCs ($P < 0.01$), as shown in Figure 4C. No change in expression of *sm α -actin*, *sm22 α* , and *vimentin* was observed in MSCs treated with GOX (0 to 5 mU/ml), as in Figure 4D through F.

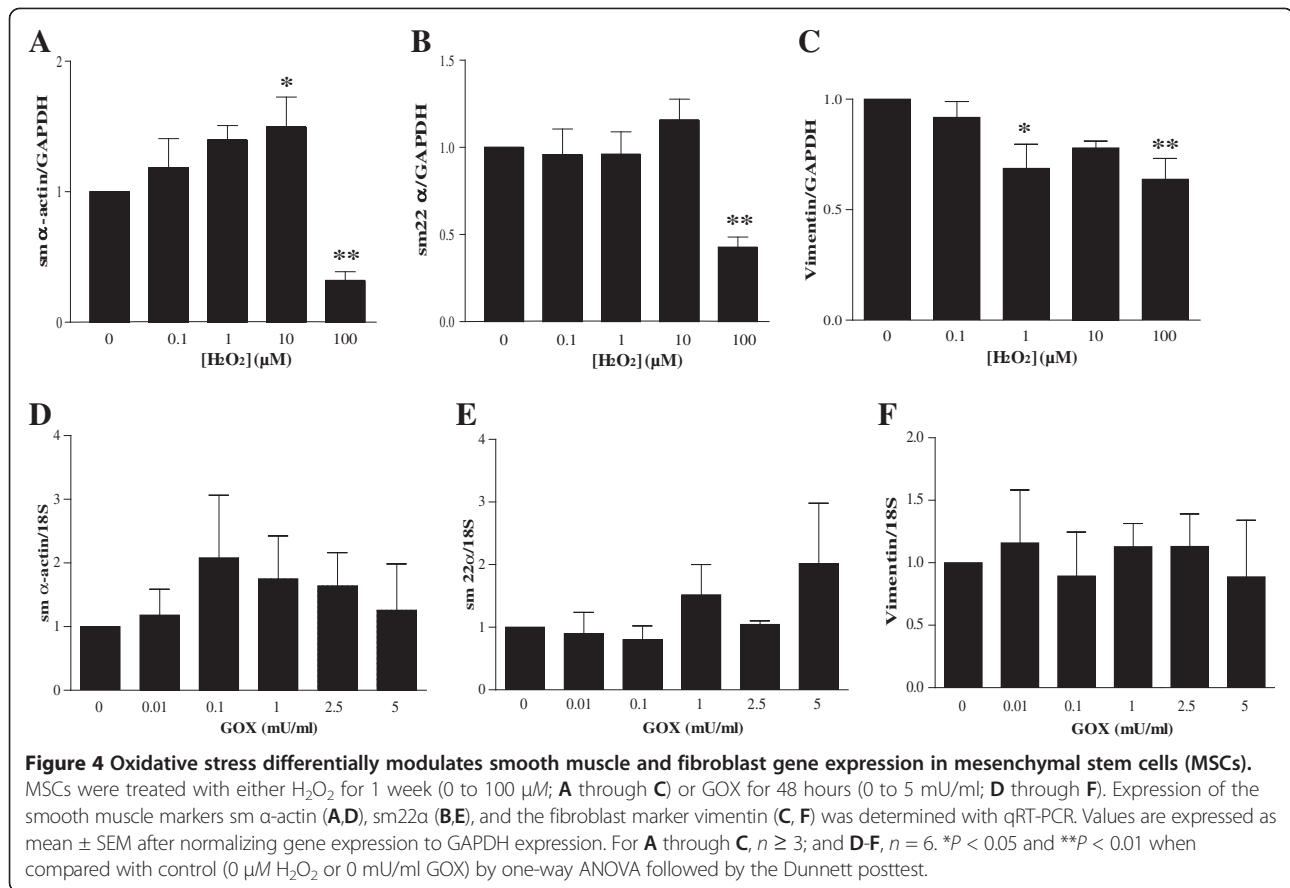
H_2O_2 or glucose oxidase treatment induces Notch1 signaling

As the Notch signaling pathway has been shown to be critical for cardiovascular development and differentiation, we analyzed the expression levels of the cell-surface receptor *Notch1* and its ligand *Jagged1* (*Jag1*) in H_2O_2 - and GOX-treated MSCs. High levels of H_2O_2 (100 μ M) augmented Notch1 gene expression by 1.5-fold after 1 week and significantly increased Notch intracellular domain (NICD) cleavage ($P < 0.05$ for gene, $P < 0.01$ for NICD cleavage, Figure 5A and B), while decreasing *Jagged1* (*Jag1*) expression by about 1.5-fold ($P < 0.05$, Figure 5F). Moreover, the expression of the downstream targets of

Notch1, *Hes5*, was increased by up to twofold in MSCs treated with 100 μ M H_2O_2 ($P < 0.05$, Figure 5D) and *Hey1* by 1.5-fold ($P < 0.01$; Figure 5E). Although no change in gene expression was observed in MSCs treated with 0 to 2.5 mU/ml GOX, a significant increase in expression of *Notch1* (15-fold; $P < 0.05$; Figure 5C), *Hes5* (150-fold; $P < 0.05$; Figure 5G), *Hey1* (150-fold; $P < 0.01$; Figure 5H), and a significant decrease in expression of *Jag1* ($P < 0.05$; Figure 5I) was observed in MSCs treated with 5 mU/ml GOX.

mRNA analysis of Notch1-related genes regulated by GOX

To determine the Notch1-related genes that were regulated in MSCs treated with 5 mU/ml of GOX, a PCR array was performed. The data were analyzed and grouped based on known associated function of the gene. As shown in Figure 6A, treatment of MSCs with 5 mU/ml of GOX resulted in an increase in expression of (a) *Wnt11* (fivefold) and its receptor *Fzd3* (3-fold), (b) genes involved in cell adhesion and proliferation (*Cd44*, *Ccnd1*, *Cflar*; about 3-fold), (c) ligands for Notch1 (*Dll1*, *Dll4*; 3-5 fold), (d) components of γ -secretase complex involved in Notch1 processing (*Psen1*, *Mfng*, *Lfng*, *hr*, *Neurl*; 3 to 15-fold); and (e) downstream target of Notch1 (*Hes5*; fivefold). As *Wnt11* is a known



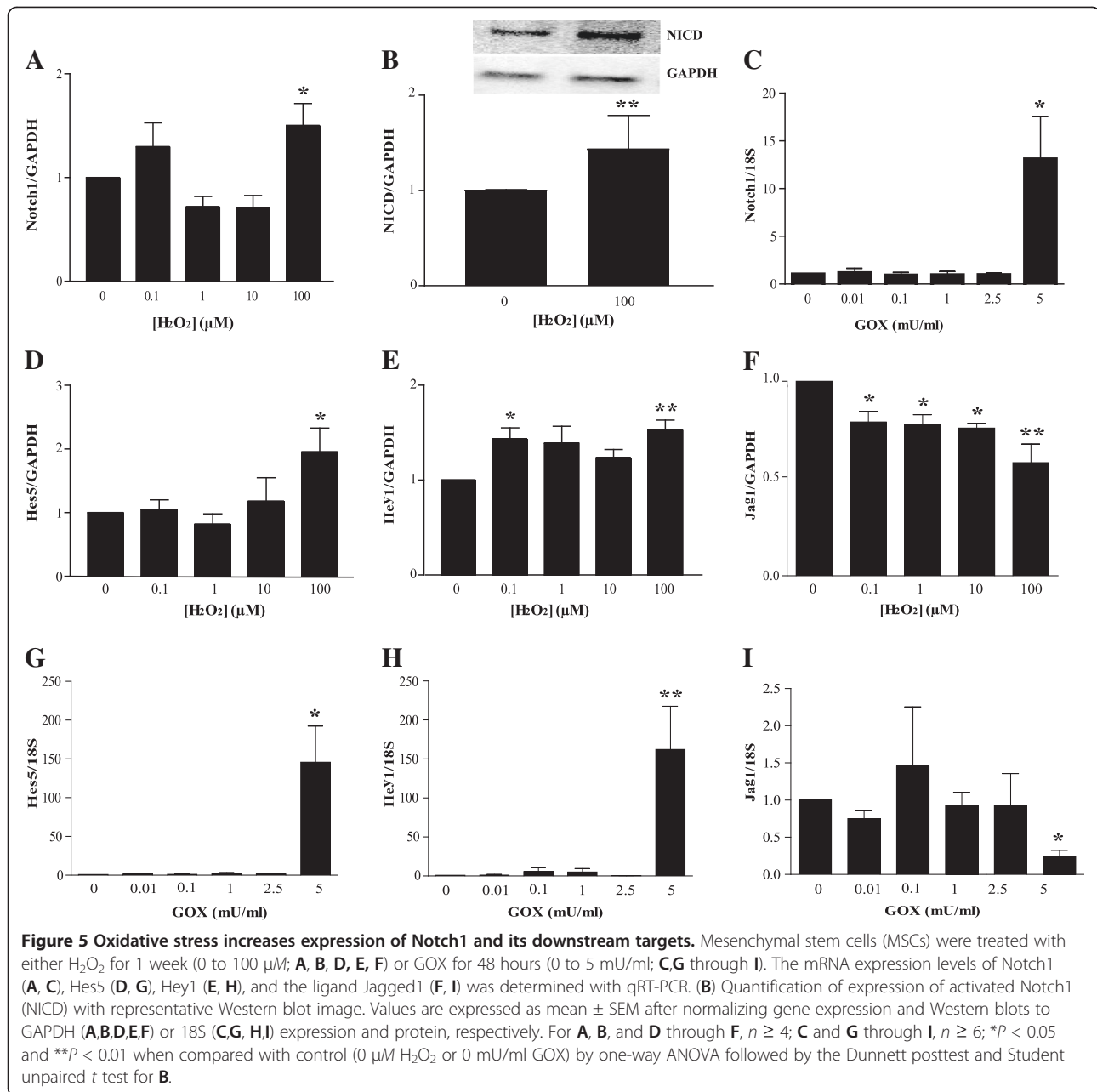
downstream target of Notch1, the expression of *Wnt11* was validated in MSCs treated with GOX (0 or 5 mU/ml). As shown in Figure 6B, a significant increase in *Wnt11* expression was observed in MSCs treated with 5 mU/ml GOX. The results were also validated by using cardiac progenitor cells, in which a similar significant increase was observed (Figure 6B, bottom).

H₂O₂ and glucose oxidase regulate cardiogenic gene expression in MSCs through Notch1

To determine the link between increased Notch1 gene expression and activity by H₂O₂ treatment and cardiogenic gene regulation, MSCs were treated with a γ -secretase inhibitor IX DAPT (10 μM) for 1 week with or without 100 μM H₂O₂. γ -Secretase is required for the release of the active Notch1 intracellular domain (NICD) [22], and thus its inhibition blocks Notch1 activation. To demonstrate that DAPT inhibits Notch1 activation, MSCs were treated with DAPT (10 μM) for 1 week with or without 100 μM H₂O₂, and protein levels of NICD were measured with Western blotting. As shown in Additional file 1, Figure S1, DAPT decreases NICD expression in the presence of 100 μM H₂O₂. Inhibition of Notch1 signaling by DAPT for 1 week showed a small but nonsignificant decrease

on basal α MHC expression, but prevented the increase seen in 100 μM H₂O₂-treated cells ($P < 0.05$ versus H₂O₂ alone; Figure 7A). A similar effect of DAPT was observed in the expression pattern of the endothelial marker *Flt1*, in which Notch1 inhibition prevented the increase in *Flt1* expression by 100 μM H₂O₂ ($P < 0.05$ versus H₂O₂ alone; Figure 7B). Interestingly, inhibition of basal Notch1 signaling by DAPT decreased expression of *sm α-actin* by 4-fold ($P < 0.001$, Figure 7C) and *sm22α* by 3-fold ($P < 0.001$, Figure 7D). This decrease was further augmented by the combined treatment with 100 μM H₂O₂ and DAPT with a 10-fold and 6-fold decrease in expression of *sm α-actin* and *sm22α*, respectively ($P < 0.001$ versus H₂O₂ alone, Figure 7C and D).

To determine whether GOX mediated changes in cardiogenic gene expression through Notch1 signaling, MSCs were treated with 5 mU/ml GOX in the presence of a negative control siRNA (siNC) or siNotch1 for 48 hours. MSCs were transfected with siRNA by using oligofectamine, as it resulted in the highest transfection efficiency when compared with other commercially available reagents (Additional file 1, Figure S2A). As shown in Additional file 1, Figure S2B, siNotch1 significantly decreased mRNA expression of Notch1 ($P < 0.05$)



when compared with untreated or siNC-treated MSCs. Further, siNotch1 decreased the GOX-induced increase in Notch1 expression comparable to untreated cells, whereas the siNC had no effect (Additional file 1, Figure S3A and B). As shown in Figure 7E and F, addition of siNotch1 showed a trend toward decreasing GOX-induced increase in expression of cardiac α MHC and *Flt1* with no significant effect of siNC. The expression of the smooth muscle markers (*sm α -actin* and *sm22 α*) was unaltered by addition of GOX in presence or absence of siNC or siNotch1 (Figure 7G, H).

H₂O₂ and glucose oxidase regulate cardiogenic protein expression

To verify whether the changes in cardiogenic gene expression translated to changes in protein expression, levels of the cardiac marker α MHC, endothelial marker *Flt1*, and smooth muscle α -actin were determined with flow analysis (Figure 8A). As shown in the grouped data in Figure 8B, GOX induced a 4-fold increase in cardiac α MHC-expressing cells (left; $P < 0.05$), a 1.4-fold increase in *Flt1*-expressing cells (middle; $P = 0.07$), and a 1.5-fold decrease in sm α -actin-expressing cells (right; $P < 0.05$).

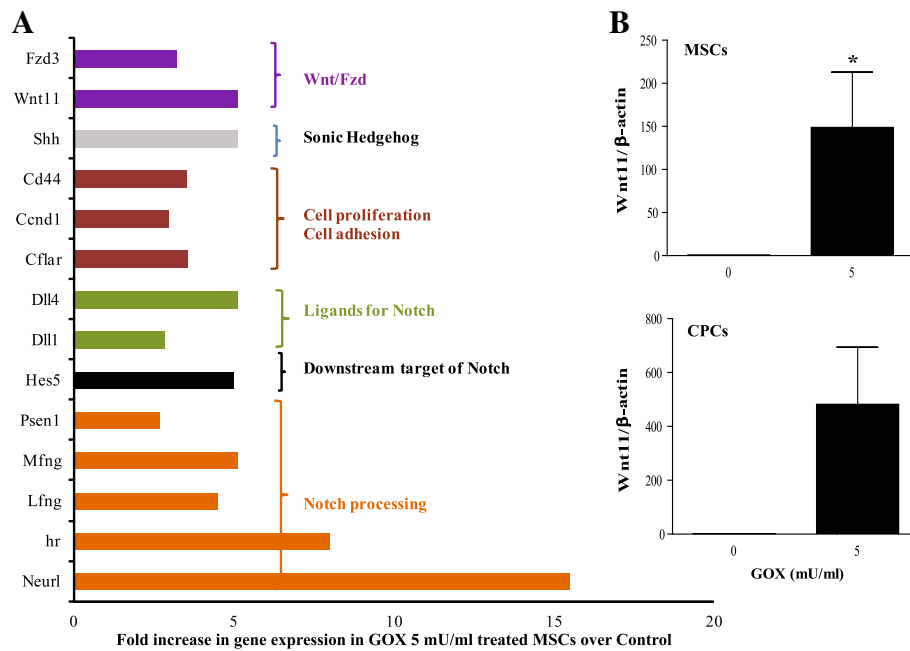


Figure 6 Polymerase chain reaction (PCR) array analysis of Notch1-related genes. Gene expression of Notch1-related genes in MSCs treated with GOX (0 or 5 μ M) was analyzed by using a PCR array. **(A)** Fold increase in gene expression in 5 μ M GOX-treated MSCs over control cells was normalized to β -actin. **(B)** Validation of increase in Wnt11 expression on 5 μ M GOX treatment in MSCs (top, $P < 0.05$) and CPCs (bottom, $P = 0.08$).

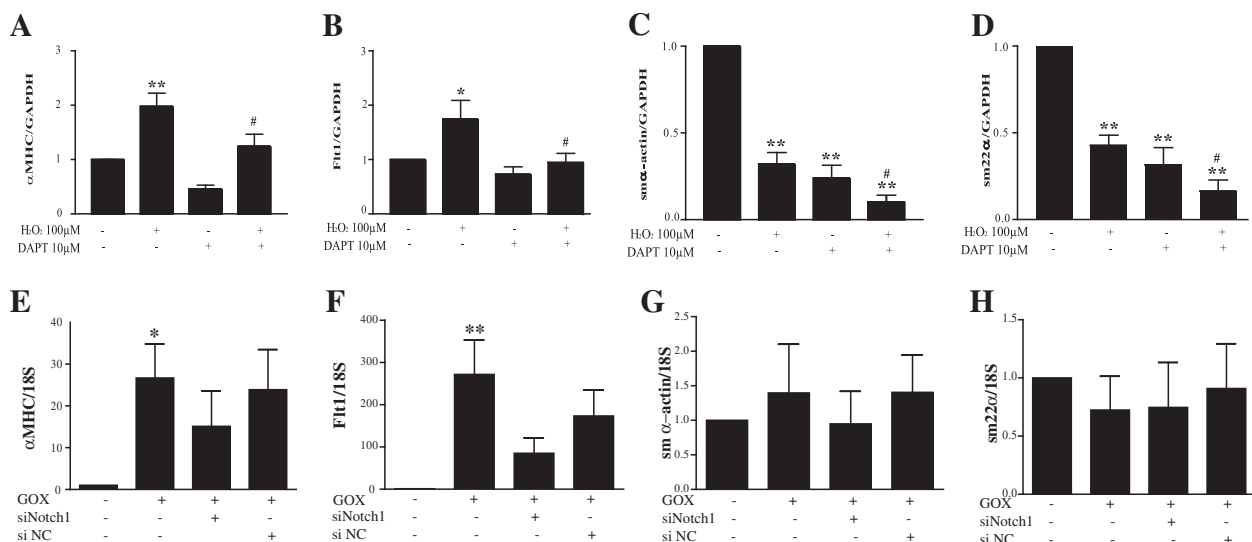
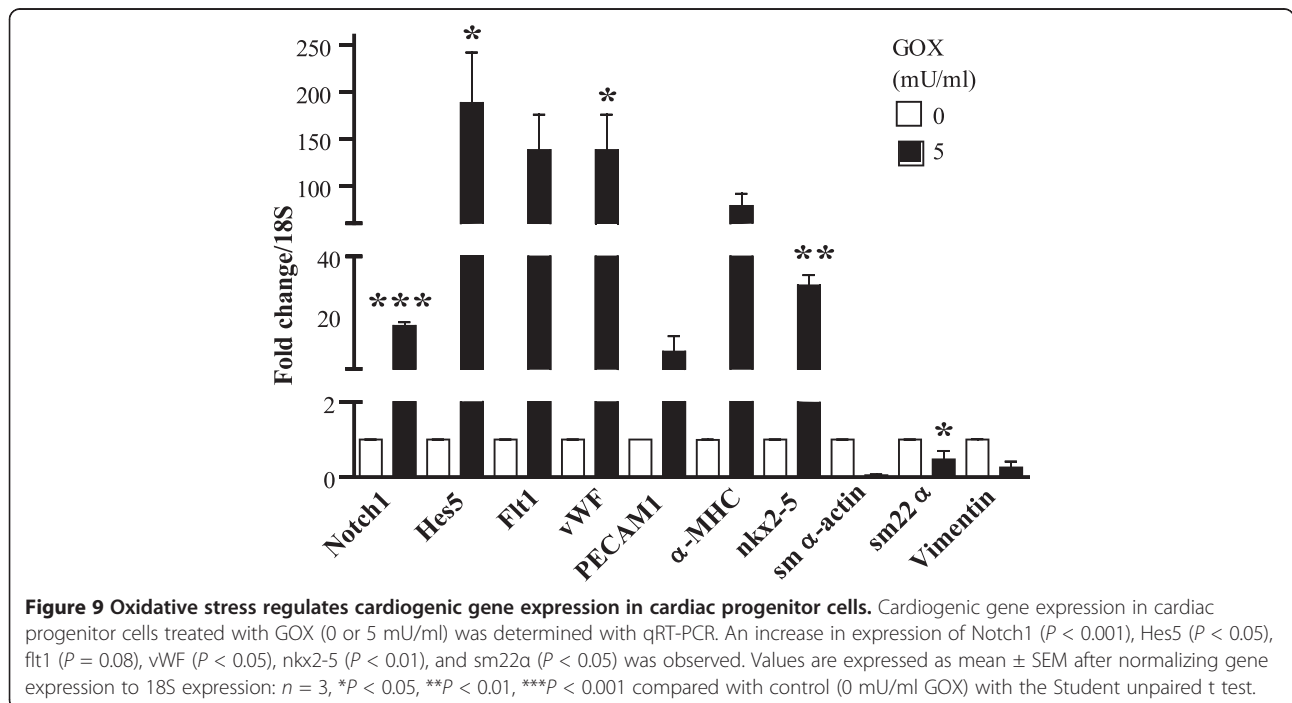
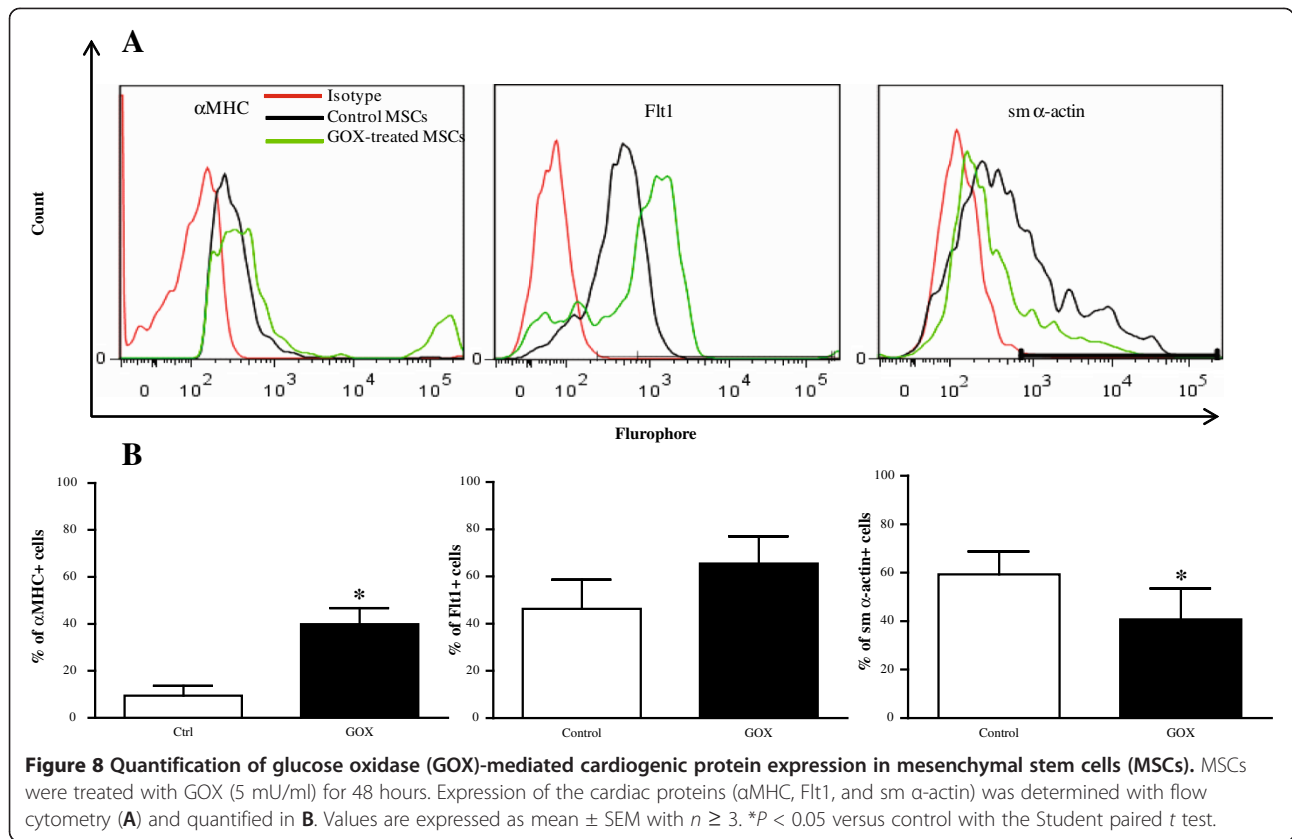


Figure 7 H₂O₂ and glucose oxidase (GOX) regulate cardiogenic gene expression in mesenchymal stem cells (MSCs) in both Notch1-dependent and -independent manners. MSCs were treated with 100 μ M H₂O₂ \pm Notch1 inhibitor DAPT (**A** through **D**) or with 5 μ M GOX \pm siNotch1 (**E** through **H**). Expression of the cardiac marker α MHC (**A**, **E**), endothelial marker Flt1 (**B**, **F**), and the smooth muscle markers sm α -actin (**C**, **G**) and sm22 α (**D**, **H**) were determined with qRT-PCR. Values are expressed as mean \pm SEM after normalizing gene expression to GAPDH (**A-D**) or 18S (**E-H**) expression. $n \geq 4$, * $P < 0.05$ and ** $P < 0.01$ compared with control (0 μ M H₂O₂), or # $P < 0.05$ compared with 100 μ M H₂O₂ by one-way ANOVA followed by Bonferroni posttest.



Oxidative stress promotes cardiogenic gene expression in cardiac progenitor cells

To determine whether the effects of oxidative stress mediated by H₂O₂ are specific for MSCs, we subjected adult cardiac progenitor cells to GOX treatment. Interestingly, an increase in expression of *Notch1* by 15-fold ($P < 0.001$) and *Hes5* by 175-fold ($P < 0.05$), along with changes in cardiogenic gene expression similar to the response of MSCs, was observed (Figure 9).

Discussion

Previous studies showed that transplantation of MSCs in the heart after MI leads to small but significant functional improvements [5]. Understanding the molecular mechanisms by which MSCs promote cardiac function, especially in the oxidative microenvironment after MI, will greatly aid in improving efficacy of stem cell-based therapies. After myocardial infarction, elevated levels of ROS have been found at the infarct site [10], suggesting that ROS such as H₂O₂ might influence the differentiation and function of implanted MSCs. As substantial amounts of ROS have been found in the area at risk after MI [23], and as ROS have been identified to play a critical role in the differentiation of other stem cell types [24,25], we chose to study the effect of H₂O₂ on MSC differentiation *in vitro*.

Here we showed that MSCs that were subjected to pulses of pathophysiologic levels of H₂O₂ for 1 week or continuous H₂O₂ produced by oxidation of glucose in the extracellular media by GOX for 48 hours increased the expression of early cardiac and endothelial genes with decreased expression of early smooth muscle genes.

Although only a twofold increase in cardiac markers is observed with H₂O₂ treatment, addition of GOX results in a more robust increase of 30-fold for *αMHC* and 75-fold for *nkx2-5*, which are comparable to neonatal rat ventricular cardiomyocytes, with 40-fold and 100-fold higher expression of *αMHC* and *nkx2-5*, respectively, when compared with untreated MSCs. These results were in agreement with those reported for human embryonic stem cells (ESCs) [25]. Similar results were obtained when adult heart-resident cardiac progenitor cells (CPCs) were treated with GOX. These data demonstrate redox-sensitive alteration in cardiogenic gene expression in MSCs and CPCs.

Our results also demonstrate that only high levels of exogenous H₂O₂ (100 μM) and high concentrations of GOX (5 mU/ml) were able to regulate expression of *Notch1* and cardiogenic genes. We believe this very narrow threshold effect may be due to a combination of factors, such as presence of basal H₂O₂ and constitutive expression of antioxidant enzymes by cells. Unpublished data from our laboratory demonstrate basal H₂O₂ levels of 1 μM in cultured stem cells, as measured with

electron paramagnetic spin resonance. Recent reports demonstrate that many stem cells, including MSCs, contain higher levels of antioxidants [26,27]. We measured H₂O₂ levels in stem cells after addition of 100 μM H₂O₂ and found that the concentration reduced to 12 μM, within an hour, indicating rapid scavenging of exogenous oxidants.

Finally, recent data from human MSCs determined higher levels of catalase and glutathione peroxidase, with no changes in superoxide dismutase compared with other stem cells and fully differentiated cells [27]. In that study, a threshold response with human MSCs demonstrated almost 80% survival at 4 mM H₂O₂, decreasing to <10% at 8 mM. Our studies indicate robust survival at 100 μM H₂O₂ and 5 mU/ml GOX with cellular responses, but showed higher concentrations to be potentially cytotoxic. Taken together, these data demonstrate that many cells, especially stem and progenitor, have threshold responses with small windows of dose-responses.

Next, we investigated whether H₂O₂ regulates any signaling pathway involved in stem cell differentiation. One of the signaling pathways that greatly influence stem cell differentiation is the Notch signaling pathway [28]. Therefore, we investigated whether interplay existed between H₂O₂ and *Notch1* signaling pathways. Interestingly, the mRNA level of *Notch1* as well as proteolytic cleavage of the *Notch1* intracellular domain (NICD) was upregulated by treatment with 100 μM either H₂O₂ or GOX, suggesting that high levels of H₂O₂ affect expression of both the mRNA and protein activity of *Notch1*. Although only a 1.5-fold increase in mRNA and twofold increase in NICD protein is observed, reports suggest that very small changes in *Notch1* activation are sufficient to induce *Notch1* signaling [11]. Furthermore, this increase in *Notch1* also significantly increased mRNA expression of downstream targets of *Notch1*. As MSCs were pulsed with H₂O₂ for 1 week, discontinuous oxidative stress resulted in small fold changes in cardiac gene expression. Although these changes may not represent true differentiation, they suggest that H₂O₂ levels influence cardiac gene expression in MSCs.

Although upregulation of cardiac and endothelial genes by *Notch1* signaling may appear to be counterintuitive, given the role of *Notch* signaling in suppressing cardiomyogenesis in ESCs [19], upregulation of *nkx2-5* and *vWF* is consistent with reports indicating involvement of *Notch1* signaling in regulating these genes in cardiac progenitor cells and bone marrow stromal cells, respectively [18,29]. Our observation that treatment with 100 μM H₂O₂ or 5 mU/ml GOX decreased expression of the *Notch1* ligand *Jagged1* in MSCs is consistent with previous reports of an inverse relation between expression levels of *Notch1* and *Jagged 1* in other cell types [30].

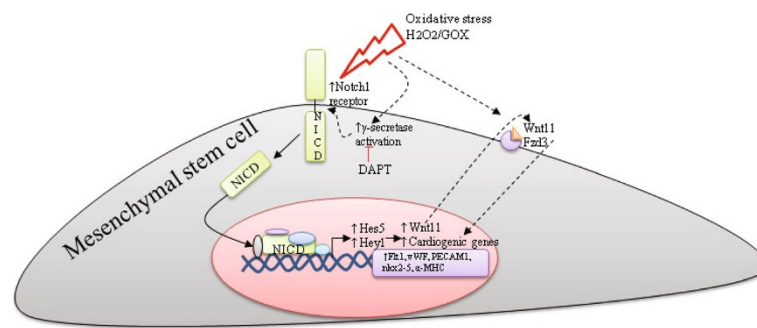


Figure 10 Proposed model of H₂O₂/GOX-mediated induction of cardiogenic gene expression in MSCs.

As we observed changes in cardiogenic gene expression at the mRNA level, we sought to determine whether these changes translated correspondingly at the protein level. Flow analysis of GOX-treated MSCs indicated that a small number of MSCs have high expression of α MHC, along with increased *Flt1* expression and decreased *sm α -actin* expression. These results suggest that GOX treatment increases the frequency α MHC- and *Flt1*-positive cells while decreasing *sm α -actin*-positive cells.

The mechanism of upregulation of Notch1 activation by H₂O₂ may be due to activation of enzymes involved in Notch1 cleavage and processing. It is possible that H₂O₂ may increase Notch1 activation via γ -secretase activation, as H₂O₂-mediated increase in γ -secretase activation has been demonstrated in the pathogenesis of Alzheimer disease [31]. Pharmacologic inhibition of γ -secretase activity by using DAPT inhibits Notch1 activation in different stem cells [29,32]. Therefore, to determine whether H₂O₂ regulates cardiogenic gene expression in MSCs through Notch1 signaling, we blocked Notch1 activation daily by using DAPT and analyzed expression of the different cardiogenic markers in the presence and absence of 100 μ M H₂O₂. Among the markers analyzed, the increase in expression of the high-affinity VEGF receptor *Flt1* and the cardiac marker α MHC observed with 100 μ M H₂O₂ was abrogated by co-treatment with DAPT, indicating that H₂O₂ regulates *Flt1* and α MHC expression through Notch1 signaling. We attempted knockdown of Notch1 by using siRNA; however, this was not successful, as siRNAs that significantly reduced Notch1 gene expression greatly reduced cell survival over the 1-week period of treatment.

To determine whether glucose oxidase (GOX) mediated acute changes in cardiogenic gene expression through Notch1 signaling, MSCs were transfected with siNotch1 along with GOX for 48 hours. Treatment with siNotch1 showed a strong trend toward decreasing the GOX-mediated increase in α MHC and *Flt1*, whereas no

effect was observed on smooth muscle gene expression by addition of GOX \pm siNotch1. As *ADAM17* is involved in Notch1 processing, MSCs were pretreated with an *ADAM17* inhibitor. No effect was observed on H₂O₂-induced gene expression, nor was the expression or activity of *ADAM17* altered by H₂O₂ treatment, suggesting the importance of the γ -secretase component of this pathway (Additional file 1, Figure S4). Further, treatment with GOX increased expression of enzymes involved in processing of Notch1 and Jagged1, such as *Mfng*, *Lfng*, and *Neurl*, indicating that H₂O₂ influences both notch1 cleavage and processing enzymes.

Expression of smooth muscle markers decreased significantly on treatment with 100 μ M H₂O₂. Inhibition of Notch1 also decreased basal expression of smooth muscle markers, in keeping with prior findings [33]. Interestingly, co-treatment of MSCs with H₂O₂ and DAPT resulted in a further decrease in smooth muscle markers. This indicates that H₂O₂ decreases smooth muscle gene expression through a parallel pathway, and that activation of Notch serves as a compensatory mechanism to stabilize smooth muscle gene expression.

Finally, expression of vimentin was also decreased by both H₂O₂ and GOX treatment. Although vimentin is expressed in many cell types, it is most prevalent in fibroblasts and is thought to be a partial marker of fibroblastic lineage [34]; lower expression could lead to decreased fibrosis.

To understand the mechanism by which oxidative stress mediated by GOX resulted in robust increases in cardiogenic gene expression, the expression of Notch1-related genes in GOX-treated MSCs was analyzed with a PCR array. Interestingly, Wnt11 expression was increased in GOX-treated MSCs. Wnt11 signaling has been shown to promote cardiomyogenic differentiation of human endothelial progenitor cells and mouse marrow mononuclear cells [35,36]. Moreover, Wnt signaling has been identified as a downstream target of Notch1 that regulates expression of cardiac transcription factors

during mouse cardiogenesis and is essential for cardiac development [37,38]. MSCs overexpressing Wnt11 have been shown to be cardioprotective after oxidative stress in rats through increased cardiac gene expression and release of paracrine factors [39,40].

Of note, MSCs used in this study were a heterogeneous mix of cells present in the adult rat bone marrow. It is unclear whether one particular lineage in the heterogeneous mix is most responsible for these changes or whether Notch1 is activated in all these cell types. Although published literature suggests that all these cells express Notch [18,41], the optimal cell type must be determined.

Conclusion

To our knowledge, this study demonstrates for the first time two important findings in the field of stem cell therapy. Oxidative stress in rat bone marrow-derived MSCs and heart-derived CPCs (a) regulates expression of selected cardiac, endothelial, and smooth muscle genes, and (b) promotes Notch1 signaling and downstream Wnt11 activation. Our current working model is depicted in Figure 10 and summarizes the findings of our study. Given that cardiogenic gene expression of two adult progenitor types (MSCs and CPCs) was induced by high levels of H₂O₂/GOX via Notch1 signaling, this may represent an important conserved response. As both of these cell types are in clinical trials, this study may have implications in developing adult stem/progenitor cell-based therapies.

Additional file

Additional file 1: Supplemental Data. Description: Supplemental table and figures.

Abbreviations

αMHC: α-myosin heavy chain; DAPT: N-[N-(3,5-difluorophenacetyl-L-alanyl)]-S-phenylglycine t-butyl ester; Flt1: Fms-related tyrosine kinase 1; GAPDH: glyceraldehyde 3-phosphate dehydrogenase; NICD: Notch1 intracellular domain; sm22α: smooth muscle 22 alpha.

Competing interests

The authors declare that they have no competing interests.

Authors' contributions

AB performed the acquisition, analysis, and interpretation of data, and drafting the manuscript; KP was involved in the acquisition and analysis of data. PC contributed acquisition of data; YY performed conception and design; MD was involved in conception and design, critical manuscript revision, and final approval. All authors read and approved the final manuscript.

Acknowledgements

This work was supported by grant HL094527 to M.E.D. from the National Heart, Lung, and Blood Institute, a Merck/United Negro College Fund Postdoctoral Fellowship to K.D.P., and an American Heart Association predoctoral fellowship 11PRE7840078 to A.V.B.

Author details

¹Wallace H. Coulter Department of Biomedical Engineering, Emory University and Georgia Institute of Technology, 101 Woodruff Circle, Suite 2001, Atlanta,

GA 30322, USA. ²Interdisciplinary BioEngineering Program, Georgia Institute of Technology, Atlanta, GA 30332, USA. ³Parker H. Petit Institute for Bioengineering and Bioscience, Atlanta, GA 30332, USA. ⁴Division of Cardiology, Emory University School of Medicine, Atlanta, GA 30332, USA.

Received: 31 October 2012 Revised: 22 March 2013

Accepted: 8 April 2013 Published: 18 April 2013

References

1. Roger VL, Go AS, Lloyd-Jones DM, Adams RJ, Berry JD, Brown TM, Carnethon MR, Dai S, de Simone G, Ford ES, Fox CS, Fullerton HJ, Gillespie C, Greenlund KJ, Hailpern SM, Heit JA, Ho PM, Howard VJ, Kissela BM, Kittner SJ, Lackland DT, Lichtman JH, Lisabeth LD, Makuc DM, Marcus GM, Marelli A, Matchar DB, McDermott MM, Meigs JB, Moy CS, Mozaffarian D, Mussolino ME, Nichol G, Paynter NP, Rosamond WD, Sorlie PD, Stafford RS, Turan TN, Turner MB, Wong ND, Wylie-Rosett J: **Heart disease and stroke statistics—2011 update: a report from the American Heart Association.** *Circulation* 2011, **123**:e18–e209.
2. Bui QT, Gertz ZM, Wilensky RL: **Intracoronary delivery of bone-marrow-derived stem cells.** *Stem Cell Res Ther* 2010, **1**:29.
3. Pittenger MF, Mackay AM, Beck SC, Jaiswal RK, Douglas R, Mosca JD, Moorman MA, Simonetti DW, Craig S, Marshak DR: **Multilineage potential of adult human mesenchymal stem cells.** *Science* 1999, **284**:143–147.
4. Rota M, Kajstura J, Hosoda T, Bearzi C, Vitale S, Esposito G, Iaffaldano G, Padin-Iruegas ME, Gonzalez A, Rizzi R, Small N, Muraski J, Alvarez R, Chen X, Urbaneck K, Bolli R, Houser SR, Leri A, Sussman MA, Anversa P: **Bone marrow cells adopt the cardiomyogenic fate in vivo.** *Proc Natl Acad Sci U S A* 2007, **104**:17783–17788.
5. Orlic D, Kajstura J, Chimenti S, Jakoniuk I, Anderson SM, Li B, Pickel J, McKay R, Nadal-Ginard B, Bodine DM, Leri A, Anversa P: **Bone marrow cells regenerate infarcted myocardium.** *Nature* 2001, **410**:701–705.
6. Deng Z, Yang C, Deng H, Yang A, Geng T, Chen X, Ma A, Liu Z: **Effects of GM-CSF on the stem cells mobilization and plasma C-reactive protein levels in patients with acute myocardial infarction.** *Int J Cardiol* 2006, **113**:92–96.
7. Wollert KC, Meyer GP, Lotz J, Ringes-Lichtenberg S, Lippolt P, Breidenbach C, Fichtner S, Korte T, Hornig B, Messinger D, Arseniev L, Hertenstein B, Ganser A, Drexler H: **Intracoronary autologous bone-marrow cell transfer after myocardial infarction: the BOOST randomised controlled clinical trial.** *Lancet* 2004, **364**:141–148.
8. Williams AR, Trachtenberg B, Velazquez DL, McNiece I, Altman P, Rouy D, Mendizabal AM, Pattany PM, Lopera GA, Fishman J, Zambrano JP, Heldman AW, Hare JM: **Intramyocardial stem cell injection in patients with ischemic cardiomyopathy: functional recovery and reverse remodeling.** *Circ Res* 2011, **108**:792–796.
9. Hori M, Nishida K: **Oxidative stress and left ventricular remodeling after myocardial infarction.** *Cardiovasc Res* 2009, **81**:457–464.
10. Sauer H, Rahimi G, Hescheler J, Wartenberg M: **Effects of electrical fields on cardiomyocyte differentiation of embryonic stem cells.** *J Cell Biochem* 1999, **75**:710–723.
11. Artavanis-Tsakonas S, Rand MD, Lake RJ: **Notch signaling: cell fate control and signal integration in development.** *Science* 1999, **284**:770–776.
12. Niessen K, Karsan A: **Notch signaling in cardiac development.** *Circ Res* 2008, **102**:1169–1181.
13. Raya A, Koth CM, Buscher D, Kawakami Y, Itoh T, Raya RM, Sternik G, Tsai HJ, Rodriguez-Esteban C, Izpisua-Belmonte JC: **Activation of Notch signaling pathway precedes heart regeneration in zebrafish.** *Proc Natl Acad Sci U S A* 2003, **100**(Suppl 1):11889–11895.
14. Xue Y, Gao X, Lindsell CE, Norton CR, Chang B, Hicks C, Gendron-Maguire M, Rand EB, Weinmaster G, Gridley T: **Embryonic lethality and vascular defects in mice lacking the Notch ligand Jagged1.** *Hum Mol Genet* 1999, **8**:723–730.
15. Gude NA, Emmanuel G, Wu W, Cottage CT, Fischer K, Quijada P, Muraski JA, Alvarez R, Rubio M, Schaefer E, Sussman MA: **Activation of Notch-mediated protective signaling in the myocardium.** *Circ Res* 2008, **102**:1025–1035.
16. Koyanagi M, Bushoven P, Iwasaki M, Urbich C, Zeiher AM, Dimmeler S: **Notch signaling contributes to the expression of cardiac markers in human circulating progenitor cells.** *Circ Res* 2007, **101**:1139–1145.
17. Li H, Yu B, Zhang Y, Pan Z, Xu W: **Jagged1 protein enhances the differentiation of mesenchymal stem cells into cardiomyocytes.** *Biochem Biophys Res Commun* 2006, **341**:320–325.

18. Boni A, Urbanek K, Nascimbene A, Hosoda T, Zheng H, Delucchi F, Amano K, Gonzalez A, Vitale S, Ojaimi C, Rizzi R, Bolli R, Yutzey KE, Rota M, Kajstura J, Anversa P, Leri A: **Notch1 regulates the fate of cardiac progenitor cells.** *Proc Natl Acad Sci U S A* 2008, **105**:15529–15534.
19. Nemir M, Croquelois A, Pedrazzini T, Radtke F: **Induction of cardiogenesis in embryonic stem cells via downregulation of Notch1 signaling.** *Circ Res* 2006, **98**:1471–1478.
20. Beltrami AP, Barlucchi L, Torella D, Baker M, Limana F, Chimenti S, Kasahara H, Rota M, Musso E, Urbanek K, Leri A, Kajstura J, Nadal-Ginard B, Anversa P: **Adult cardiac stem cells are multipotent and support myocardial regeneration.** *Cell* 2003, **114**:763–776.
21. French KM, Boopathy AV, Dequach JA, Chingozha L, Lu H, Christman KL, Davis ME: **A naturally derived cardiac extracellular matrix enhances cardiac progenitor cell behavior in vitro.** *Acta Biomater* 2012.
22. Bray SJ: **Notch signalling: a simple pathway becomes complex.** *Nat Rev Mol Cell Biol* 2006, **7**:678–689.
23. Song H, Cha MJ, Song BW, Kim IK, Chang W, Lim S, Choi EJ, Ham O, Lee SY, Chung N, Jang Y, Hwang KC: **Reactive oxygen species inhibit adhesion of mesenchymal stem cells implanted into ischemic myocardium via interference of focal adhesion complex.** *Stem Cells* 2010, **28**:555–563.
24. Le Belle JE, Orozco NM, Paucar AA, Saxe JP, Mottahedeh J, Pyle AD, Wu H, Kornblum HI: **Proliferative neural stem cells have high endogenous ROS levels that regulate self-renewal and neurogenesis in a PI3K/Akt-dependant manner.** *Cell Stem Cell* 2011, **8**:59–71.
25. Sauer H, Rahimi G, Hescheler J, Wartenberg M: **Role of reactive oxygen species and phosphatidylinositol 3-kinase in cardiomyocyte differentiation of embryonic stem cells.** *FEBS Lett* 2000, **476**:218–223.
26. Dermbach E, Urbich C, Brandes RP, Hofmann WK, Zeiher AM, Dimmeler S: **Antioxidative stress-associated genes in circulating progenitor cells: evidence for enhanced resistance against oxidative stress.** *Blood* 2004, **104**:3591–3597.
27. Valle-Prieto A, Conget PA: **Human mesenchymal stem cells efficiently manage oxidative stress.** *Stem Cells Dev* 2010, **19**:1885–1893.
28. Chiba S: **Notch signaling in stem cell systems.** *Stem Cells* 2006, **24**:2437–2447.
29. Xu J, Liu X, Chen J, Zacharek A, Cui X, Savant-Bhonsale S, Liu Z, Chopp M: **Simvastatin enhances bone marrow stromal cell differentiation into endothelial cells via notch signaling pathway.** *Am J Physiol Cell Physiol* 2009, **296**:C535–543.
30. Kohler C, Bell AW, Bowen WC, Monga SP, Fleig W, Michalopoulos GK: **Expression of Notch-1 and its ligand Jagged-1 in rat liver during liver regeneration.** *Hepatology* 2004, **39**:1056–1065.
31. Shen C, Chen Y, Liu H, Zhang K, Zhang T, Lin A, Jing N: **Hydrogen peroxide promotes Abeta production through JNK-dependent activation of gamma-secretase.** *J Biol Chem* 2008, **283**:17721–17730.
32. Borghese L, Dolezalova D, Opitz T, Haupt S, Leinhaus A, Steinfarz B, Koch P, Edenhofer F, Hampf A, Brustle O: **Inhibition of notch signaling in human embryonic stem cell-derived neural stem cells delays G1/S phase transition and accelerates neuronal differentiation in vitro and in vivo.** *Stem Cells* 2010, **28**:955–964.
33. Tang Y, Urs S, Liaw L: **Hairy-related transcription factors inhibit Notch-induced smooth muscle alpha-actin expression by interfering with Notch intracellular domain/CBF-1 complex interaction with the CBF-1-binding site.** *Circ Res* 2008, **102**:661–668.
34. Camelliti P, Borg TK, Kohl P: **Structural and functional characterisation of cardiac fibroblasts.** *Cardiovasc Res* 2005, **65**:40–51.
35. Koyanagi M, Haendeler J, Badorf C, Brandes RP, Hoffmann J, Pandur P, Zeiher AM, Kuhl M, Dimmeler S: **Non-canonical Wnt signaling enhances differentiation of human circulating progenitor cells to cardiomyogenic cells.** *J Biol Chem* 2005, **280**:16838–16842.
36. Flaherty MP, Abdel-Latif A, Li Q, Hunt G, Ranjan S, Ou Q, Tang XL, Johnson RK, Bolli R, Dawn B: **Noncanonical Wnt11 signaling is sufficient to induce cardiomyogenic differentiation in unfractionated bone marrow mononuclear cells.** *Circulation* 2008, **117**:2241–2252.
37. Klaus A, Muller M, Schulz H, Saga Y, Martin JF, Birchmeier W: **Wnt/beta-catenin and Bmp signals control distinct sets of transcription factors in cardiac progenitor cells.** *Proc Natl Acad Sci U S A* 2012, **109**:10921–10926.
38. Cohen ED, Miller MF, Wang Z, Moon RT, Morrisey EE: **Wnt5a and Wnt11 are essential for second heart field progenitor development.** *Development* 2012, **139**:1931–1940.
39. Zuo S, Jones WK, Li H, He Z, Pasha Z, Yang Y, Wang Y, Fan GC, Ashraf M, Xu M: **Paracrine effect of Wnt11-overexpressing mesenchymal stem cells on ischemic injury.** *Stem Cells Dev* 2012, **21**:598–608.
40. He Z, Li H, Zuo S, Pasha Z, Wang Y, Yang Y, Jiang W, Ashraf M, Xu M: **Transduction of Wnt11 promotes mesenchymal stem cell transdifferentiation into cardiac phenotypes.** *Stem Cells Dev* 2011, **20**:1771–1778.
41. Duncan AW, Rattis FM, DiMascio LN, Congdon KL, Pazianos G, Zhao C, Yoon K, Cook JM, Willert K, Gaiano N, Reya T: **Integration of Notch and Wnt signaling in hematopoietic stem cell maintenance.** *Nat Immunol* 2005, **6**:314–322.

doi:10.1186/scrt190

Cite this article as: Boopathy et al.: Oxidative stress-induced Notch1 signaling promotes cardiogenic gene expression in mesenchymal stem cells. *Stem Cell Research & Therapy* 2013 **4**:43.

Submit your next manuscript to BioMed Central and take full advantage of:

- Convenient online submission
- Thorough peer review
- No space constraints or color figure charges
- Immediate publication on acceptance
- Inclusion in PubMed, CAS, Scopus and Google Scholar
- Research which is freely available for redistribution

Submit your manuscript at
www.biomedcentral.com/submit

