


CORRECTION

Open Access



# Correction: Physiologically based radiopharmacokinetic (PBRPK) modeling to simulate and analyze radiopharmaceutical therapies: studies of non-linearities, multi-bolus injections, and albumin binding

Ali Fele-Paranj<sup>1,2</sup>, Babak Saboury<sup>3</sup>, Carlos Uribe<sup>2,4,5</sup> and Arman Rahmim<sup>1,2,5\*</sup> 

The original article can be found online at <https://doi.org/10.1186/s41181-023-00236-w>.

\*Correspondence:  
arman.rahmim@ubc.ca

<sup>1</sup> School of Biomedical Engineering, University of British Columbia, Vancouver, BC, Canada

<sup>2</sup> Department of Integrative Oncology, BC Cancer Research Institute, Vancouver, BC, Canada

<sup>3</sup> Department of Radiology and Imaging Sciences, Clinical Center, National Institutes of Health, Bethesda, MD, USA

<sup>4</sup> Department of Functional Imaging, BC Cancer, Vancouver, BC, Canada

<sup>5</sup> Department of Radiology, University of British Columbia, Vancouver, BC, Canada

**Correction: EJNMMI Radiopharmacy and Chemistry (2024) 9:6**  
<https://doi.org/10.1186/s41181-023-00236-w>

In the original publication of the article, inaccuracies were identified in Figures 3 and 7 due to an incorrect application of  $S$  values in the dose calculations. The  $S$  values, which should vary with tumor volume to accurately represent dose distribution, were mistakenly kept constant.

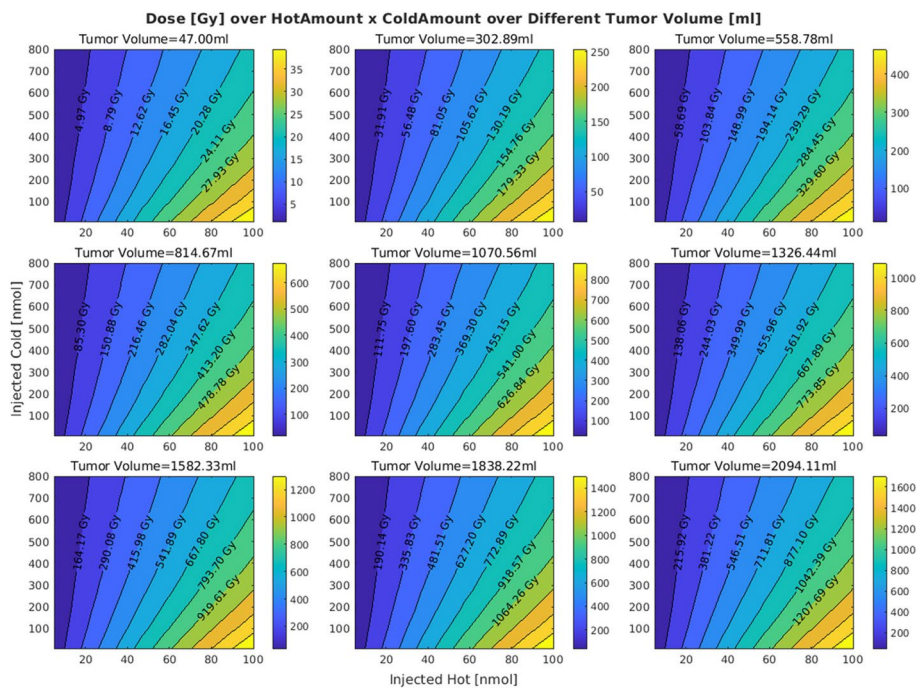
Upon review, the authors have corrected this error and recalculated the doses with varying  $1/s$  values as they should proportionally change with tumor sizes (volumes). Below is a Table 1 of the corrected  $S$  values and their corresponding tumor volumes:

These errors also affected figures 3 and 7. The incorrect and correct figures are shown in this correction article. The corrected figures show that with increasing volumes the distributions are minimally altered; all other figures and conclusions remain intact.

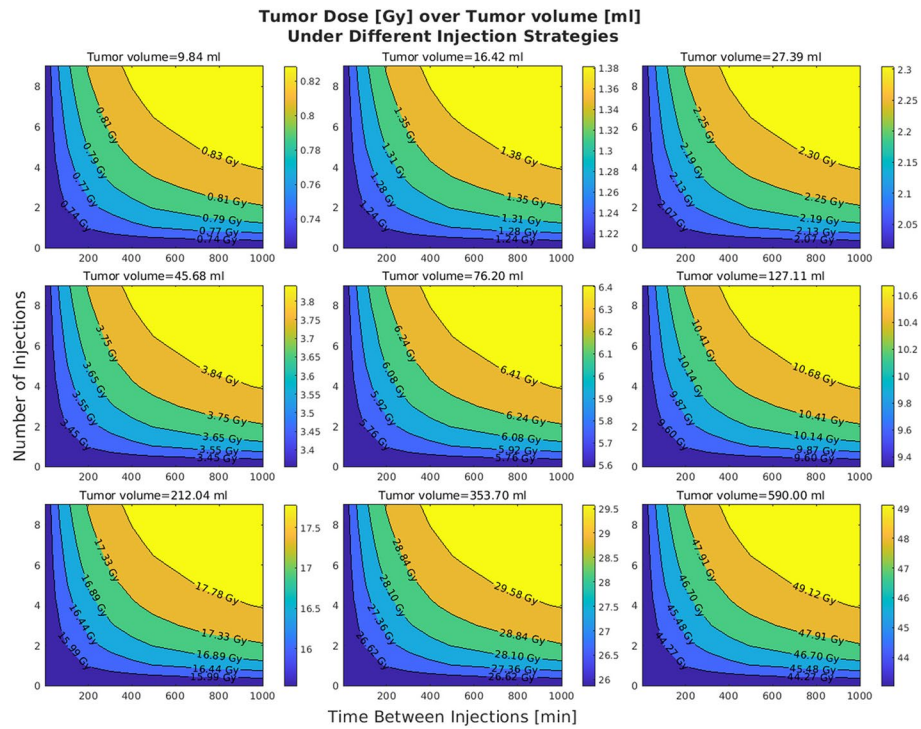
**Table 1** Corrected S values and corresponding tumor volumes

Tumor volume (ml)	S value (Gy * min <sup>-1</sup> * MBq <sup>-1</sup> )
47	3.01E-05
302	4.67E-06
558	2.53E-06
814	1.73E-06
1070	1.32E-06
1326	1.06E-06
1582	8.95E-07
1838	7.70E-07
2094	6.76E-07
2350	6.02E-07

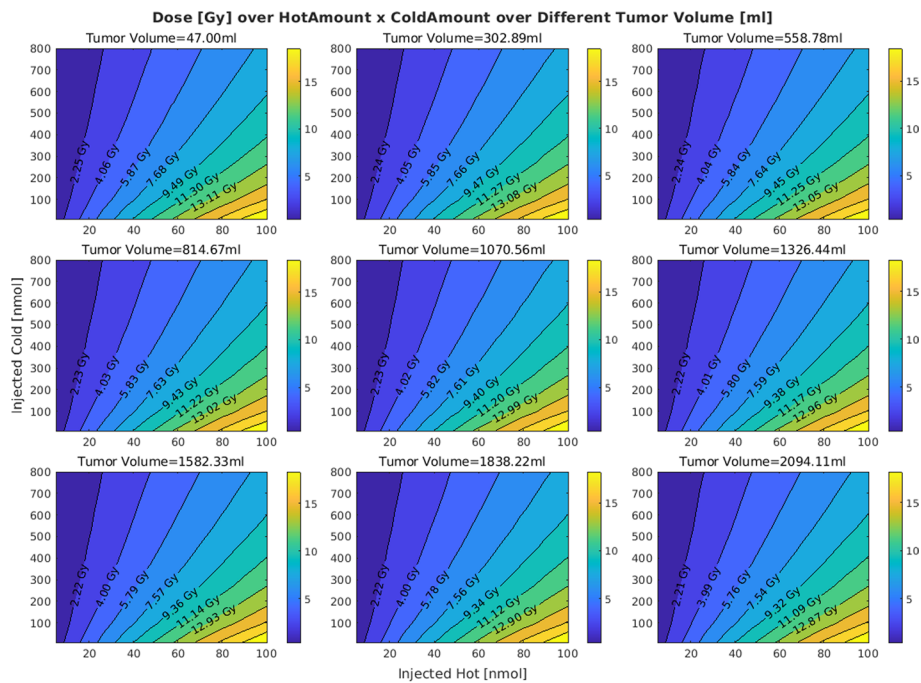
**Incorrect figure 3**



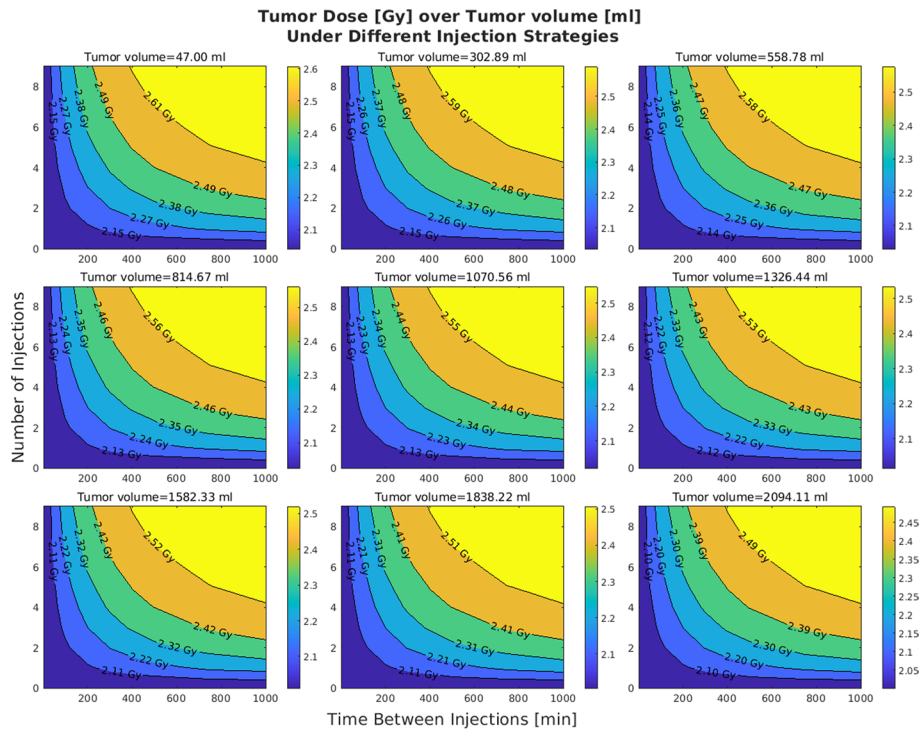
**Incorrect figure 7**



**Correct figure 3**



**Correct figure 7**



Published online: 19 March 2024

**Publisher's Note**

Springer Nature remains neutral with regard to jurisdictional claims in published maps and institutional affiliations.