


RAPID COMMUNICATION

Open Access



CCR7 as a novel therapeutic target in t-cell PROLYMPHOCYTIC leukemia

Carlos Cuesta-Mateos^{1,2*†} , Patricia Fuentes^{3†}, Alexandra Schrader^{4†}, Raquel Juárez-Sánchez^{1,2}, Javier Loscertales⁵, Tamara Mateu-Albero¹, Lorena Vega-Piris⁶, Marina Espartero-Santos¹, Ana Marcos-Jimenez¹, Blanca Andrea Sánchez-López¹, Yaiza Pérez-García¹, Dennis Jungherz⁴, Sebastian Oberbeck⁴, Linus Wahnschaffe⁴, Anna Kreutzman¹, Emma I. Andersson⁷, Satu Mustjoki^{7,8}, Edgar Faber⁹, Ana Urzainqui¹, Manuel Fresno¹⁰, Kostantino Stamatakis¹⁰, Arantazu Alfranca¹, Fernando Terrón², Marco Herling⁴, María Luisa Toribio³ and Cecilia Muñoz-Calleja^{1,11}

Abstract

T-cell prolymphocytic leukemia (T-PLL) is a poor prognostic disease with very limited options of efficient therapies. Most patients are refractory to chemotherapies and despite high response rates after alemtuzumab, virtually all patients relapse. Therefore, there is an unmet medical need for novel therapies in T-PLL. As the chemokine receptor CCR7 is a molecule expressed in a wide range of malignancies and relevant in many tumor processes, the present study addressed the biologic role of this receptor in T-PLL. Furthermore, we elucidated the mechanisms of action mediated by an anti-CCR7 monoclonal antibody (mAb) and evaluated whether its anti-tumor activity would warrant development towards clinical applications in T-PLL. Our results demonstrate that CCR7 is a prognostic biomarker for overall survival in T-PLL patients and a functional receptor involved in the migration, invasion, and survival of leukemic cells. Targeting CCR7 with a mAb inhibited ligand-mediated signaling pathways and induced tumor cell killing in primary samples. In addition, directing antibodies against CCR7 was highly effective in T-cell leukemia xenograft models. Together, these findings make CCR7 an attractive molecule for novel mAb-based therapeutic applications in T-PLL, a disease where recent drug screen efforts and studies addressing new compounds have focused on chemotherapy or small molecules.

Keywords: CCR7, T-PLL, mAb, T-cell lymphomas, Immunotherapy

Background

T-cell prolymphocytic leukemia (T-PLL) is a rare hematological malignancy, which represents ~2% of all mature lymphocytic leukemia in adults [1, 2]. T-PLL is characterized by a rapid proliferation of mature post-thymic prolymphocytes [1, 3, 4] and the presence of

cytogenetic abnormalities affecting the chromosomes 14q32 and Xq28 that lead to over-expression and activation of the *TCL1* and *MTCP1* oncogenes, respectively [5–7]. In addition, T-PLL is featured by an aggressive clinical course and by poor responses to alkylating chemotherapies [1, 4, 8, 9]. Therapeutic options for T-PLL have broadened with the advent of purine analogs [10], and particularly by the anti-CD52 monoclonal antibody (mAb) alemtuzumab [11, 12]. With these options, response rates exceed 90% and the median overall survival (OS) was extended from ~7.5 to ~20 months following alemtuzumab monotherapy or in combination with purine analogs [8,

* Correspondence: carlos.cuesta@salud.madrid.org

†Carlos Cuesta-Mateos, Patricia Fuentes and Alexandra Schrader contributed equally to this work.

¹Immunology Department, Hospital Universitario de La Princesa, IIS-IP, C/ Diego de León 62, 28006 Madrid, Spain

²IMMED S.L., Immunological and Medicinal Products, Madrid, Spain

Full list of author information is available at the end of the article



© The Author(s). 2020 **Open Access** This article is licensed under a Creative Commons Attribution 4.0 International License, which permits use, sharing, adaptation, distribution and reproduction in any medium or format, as long as you give appropriate credit to the original author(s) and the source, provide a link to the Creative Commons licence, and indicate if changes were made. The images or other third party material in this article are included in the article's Creative Commons licence, unless indicated otherwise in a credit line to the material. If material is not included in the article's Creative Commons licence and your intended use is not permitted by statutory regulation or exceeds the permitted use, you will need to obtain permission directly from the copyright holder. To view a copy of this licence, visit <http://creativecommons.org/licenses/by/4.0/>. The Creative Commons Public Domain Dedication waiver (<http://creativecommons.org/publicdomain/zero/1.0/>) applies to the data made available in this article, unless otherwise stated in a credit line to the data.

10, 13–15]. Nevertheless, the relapse rate after these agents is ~100% with a median duration of remissions of ~12 months. Only 10–15% of patients experience long-term (>5 years) survival [8, 13, 16, 17] after consolidation with allogeneic hematopoietic stem cell transplantation (allo-HSCT) [16, 18]. Given these unsustainable responses after induction and the limited eligibility for a consolidating allo-HSCT, there is an urgent clinical need for more efficient and profound tumor cell clearance in T-PLL.

To overcome the restricted availability of active therapies in T-PLL, we focused on the homeostatic chemokine receptor CCR7 as a targetable structure. CCR7 controls the entry of normal naïve (T_N) and central memory T-cells (T_{CM}) into the secondary lymphoid organs (SLO). CCR7 is expressed in mature T-cell malignancies, such as adult T-cell leukemia/lymphoma (ATLL) [19] and Sézary syndrome (SS) [20], and enables the entry of acute lymphoblastic leukemia (ALL) cells to the central nervous system (CNS) where CCR7 promotes survival and proliferation [21, 22]. In the present work, we studied the expression and functions of CCR7 in primary samples of T-PLL and evaluated *in vitro* and *in vivo* its potential as a therapeutic target for a mAb-based therapy.

Methods

Samples

T-PLL patients included in this study were diagnosed according to WHO and refined consensus criteria [2, 3]. Informed consent was obtained in each contributing center in accordance with the Declaration of Helsinki. Experimental procedures were approved by the Institutional Board of the Hospital de La Princesa. Cells isolation from freshly donated peripheral blood (PB) was done using Ficoll-paque plus density gradient centrifugation (Amersham Biosciences, Little Chalfont, UK). Cells were cultured in RPMI-1640 media supplemented with 10% heat-inactivated fetal bovine serum (FBS), 2 mM L-glutamine and 100 U/mL penicillin/100 µg/mL streptomycin at 37 °C in 5% CO₂. Peripheral blood mononuclear cells (PBMCs) from healthy donors (HD) were obtained from PB or blood buffy coats. Human umbilical vein endothelial cells (HUVEC) were isolated from freshly donated umbilical cords in accordance to the Declaration of Helsinki.

Cell lines

The human cell line SUP-T11 was purchased from the DSMZ German collection of microorganisms and cell cultures (Braunschweig, Germany). Identity was confirmed using multiplex PCR of minisatellite markers performed by DSMZ. Cells were cultured according to supplier's protocols. Absence of *Mycoplasma* contamination was routinely tested for with MYCOPLASMA Gel Form kit (Biotools, Madrid, Spain).

Reagents

The antibody alemtuzumab was provided by Genzyme (Cambridge, MA). Mouse anti-hCCR7 mAb (150503 clone, IgG2a) and the respective isotype control (IC) were obtained from R&D Systems (Minneapolis, MN). The anti-CCR7 mAb was selected owing to its reported ability to block CCR7-ligand interactions and killing target cells [22–25]. In a confirmatory assay, clone 150503 showed no agonistic effects in β -arrestin recruitment assays whereas CCL21 triggered a strong activation (Supplementary Figure 1-A). Similarly, we confirmed that the selected clone did not induce internalization processes upon binding to surface CCR7 (Supplementary Figure 1-B).

Flow cytometry

Expression levels of CCR7, CD52, and CCR4 on T-PLL cells were determined using PE (phycoerythrin)- or PE-cy5.5-conjugated anti-CCR7 (clone 150503, R&D Systems, Minneapolis, MN), PE-conjugated anti-CD52 or PE-conjugated anti-CCR4 (clones 4C8 and 1G1, respectively, BD Biosciences, San Jose, CA), with auxiliary CD5-FITC (clone UCHT2), CD7-APC (clone M-7 T01), and CD3-APC-H7 (clone SK7) (all from BD Biosciences). In all cases, an appropriate fluorochrome-conjugated IC was included and 10⁴ neoplastic T-cells were acquired. Immunofluorescence staining was analyzed on a FACS Canto II flow cytometer (BD Biosciences) using Infinicyt v.1.3.0 (Cytognos, Salamanca, Spain) and Diva v.2.4 (BD Biosciences) software. Results are presented as the percentage of CCR7 positive cells and the median fluorescence intensity (MFI) of CCR7, CD52, and CCR4 expression relative to the IC (RMFI). For determination of CCR7 expression on T_N or T_{CM} , we used a flow cytometry panel containing the following antibodies: CCR7 PE (R&D), and CD45RA-PerCP-Cy5.5, CD45RO-FITC, CD3-V500, CD4-V450, CD27-APC (all from BD Biosciences).

Western blot

Cells were serum-starved for 4 h, incubated with anti-CCR7 mAb (10 µg/mL) or the appropriate IC, treated with hCCL19 or hCCL21 (1 µg/mL, PeproTech, Rocky Hills, NJ) for the indicated times and then lysed in ice-cold modified-RIPA buffer. Equal amounts of protein were analyzed by SDS-PAGE and immunoblotting using phospho-ERK1/2 (Thr202/Tyr204), phospho-AKT (Ser473), phospho-MLC (Ser-19), anti-AKT, anti-ERK1/2 and anti-MLC specific antibodies, all of them purchased from Cell Signaling Technology (Danvers, MA). Membranes were first probed with antibodies against the phospho-proteins under study, and then re-probed with antibodies recognizing the total amount of each protein. Bands were visualized using enhanced chemiluminescence (Amersham Pharmacia Biotech, Buckinghamshire UK), and

quantified with a LAS1000 image analyzer (FujiFilm, Tokyo, Japan).

Migration

Chemotaxis of T-PLL cells was assayed in Transwell chambers (6.5 mm diameter, 10 μ m thickness and 5 μ m diameter pore size, Corning-Costar, Tewksbury, MA) as previously described [23]. Only samples from patients with > 95% of tumor cells were analyzed. Briefly, 5×10^5 cells suspended in RPMI-1640, 0.5% BSA were loaded in the upper chamber and chemokines (1 μ g/mL) were added to the lower compartment. Migration was allowed to proceed for 4 h at 37 °C and 5% CO₂. When required, cells were pre-incubated for 30 min with anti-CCR7 mAb (10 μ g/mL) or an IC, which were maintained throughout the chemotaxis assays. Cells that migrated to the lower chamber were stained with anti-CD3-PE mAb (clone SK7, BD Biosciences) and anti-CD7-APC (clone M-7 T01, BD Biosciences), enumerated by flow cytometry using a FACS Canto II flow cytometer and compared with the number of cells loaded in the upper chamber. The percentage of migrated cells (% of input) was calculated according to the following formula: $100 \times (\text{number of cells in the lower chamber} / \text{number of cells loaded in the upper chamber})$.

Invasion

Three million serum-starved T-PLL cells were harvested and included in 4 °C liquid Matrigel™ (BD Biosciences Pharmingen, San Diego, CA). Then, the Matrigel suspension containing cells was added to the Transwell chambers (Costar) and incubated at 37 °C for 30 min. Cells were incubated with anti-CCR7 mAb (10 μ g/mL) or IC prior to addition of Matrigel. Once Matrigel was solidified the chemokines were added to the lower chamber and cells were allowed to migrate in RPMI-1640 with 1% FBS for 24 h at 37 °C in 5% CO₂ atmosphere. Cells that had migrated to the lower chamber were quantified as described in migration assays.

Transendothelial migration (TEM)

Tumor cell transmigration through intact endothelium was examined using monolayers of cultured human umbilical vein endothelial cells (HUVEC) seeded in gelatine-coated Transwell chambers (Costar) at a density of 4×10^4 cells per well as previously reported [24]. The integrity of HUVEC monolayers was confirmed by toluidin blue staining and confluent monolayers were stimulated with 15 ng/mL recombinant TNF- α (R&D Systems), for 16 h prior to the assay. Before applying to upper chambers, T-PLL cells were incubated with anti-CCR7 mAb (10 μ g/mL) or an IC. Then, leukemic cells (5×10^5 per well) were suspended in medium with 1% FBS, and placed into upper chambers. Lower chambers

were filled with medium containing hCCL19 or hCCL21 (1 μ g/mL). After 4 h, cells in the lower chamber were recovered, stained and enumerated as described above.

Gelatin zymography

T-PLL cells (3×10^6) were placed in serum-free media for 1 h and then treated with either IC or anti-CCR7 mAb (10 μ g/mL) for 30 min. Cells were left untreated or stimulated with CCL19 or CCL21 (1 μ g/mL) for 24 h. Conditioned media were collected and centrifuged to remove cells or debris. Samples were concentrated using a Centricon (Millipore, Burlington, MA) to identical final volumes for all conditions. Zymography was performed on a 10% SDS-polyacrylamide gel incorporated with 0.1% gelatin (Sigma, San Luis, MO) [24]. FBS, containing MMP-2 and MMP-9, was used as a positive control. After electrophoresis, MMPs were allowed to re-nature by washing the gel twice in 50 mL of 2.5% Triton X-100 for 30 min, incubated for 24 h at 37 °C in developing buffer (50 mM Tris pH 7.5, 200 mM NaCl, 10 mM CaCl₂), and stained for 1 h with 0.5% Coomassie brilliant blue G250. After de-staining, gelatinolytic activity was visualized as a transparent band against a blue background. Analysis of proteolytic bands was performed using LAS1000 image analyzer (FujiFilm).

Proliferation

T-PLL cells (5×10^5) were stained with 5 mM CellTrace™ Violet reagent (Molecular Probes, Eugene, OR) prior to stimulation with CCL19 and CCL21 (1 μ g/mL). Cell labelling was performed according to the manufacturer's protocol. Cells suspended in 1% FBS RPMI-1640 complete medium were then seeded in 96-well plates, stimulated with chemokines and incubated for 7 days. Every 24 h a total of 5×10^4 cells were analyzed on a FACS CantoII BD with 405 nm excitation and a 450/40 band-pass emission filter in order to discriminate discrete peaks representing successive generations of live T-PLL cells. The growth rate was calculated according to the formula: $GR = [\text{CellTrace}^{\text{TM}}\text{-positive-cells}(t_0) - \text{CellTrace}^{\text{TM}}\text{-positive-cells}(t_X)] / \text{CellTrace}^{\text{TM}}\text{-positive-cells}(t_0)$.

Cell survival

To examine whether CCR7 is involved in survival of T-PLL, leukemic cells suspended in 1% FBS RPMI-1640 complete medium were seeded in 96-well plates at a density of 10^6 cells/mL. Cells were either left untreated or incubated for 30 min in the presence of anti-CCR7 mAb (10 μ g/mL) before the addition of the ligands (1 μ g/mL). Cell viability was determined every 24 h by staining with the Annexin-V and the DNA dye 7-aminoactinomycin-D (7-AAD) kit from BD Biosciences. The apoptosis assay was used according to the

manufacturer's instructions to determine the percentage of non-viable cells by flow cytometry.

Apoptosis

To assess whether anti-CCR7 mAb induces direct apoptosis, T-PLL cells were incubated with anti-CCR7 mAb in RPMI-1640 complete medium. The cells were incubated at 37 °C for a maximum of 72 h. Every 24 h cells were stained with the Annexin-V/7-AAD assay as described before. Then we carried out the quantitative determination of the percentage of viable and non-viable cells.

Complement-dependent cytotoxicity (CDC)

CDC assays were performed as previously described [25, 26]. Briefly, 2×10^5 T-PLL target cells were plated in a 96-well round-bottom plate together with the indicated concentrations of purified anti-CCR7, alemtuzumab (anti-CD52; Campath™, Genzyme, Cambridge, MA) or IC antibodies. After 30 min at 37 °C the cells were washed and complete RPMI-1640 medium containing 25% rabbit complement (Serotec-Bio-Rad, Hercules, CA), with or without prior heat inactivation (56 °C, 30 min), was added. After 1.5 h, 7-AAD was used as a viability exclusion dye and the percentage of non-viable cells was measured by flow cytometry. The proportion of specific lysis (% SL) was calculated with the formula: % SL = $100 \times (\% \text{ dead cells with activated complement} - \% \text{ dead cells with inactivated complement}) / (100 - \% \text{ dead cells with inactivated complement})$.

Antibody-dependent cell-mediated cytotoxicity (ADCC)

ADCC assays were performed as previously described [25, 26]. Cells were incubated with media alone or in the presence of IC, alemtuzumab, or anti-CCR7 antibodies (10 µg/mL) at 37 °C for 30 min. Unbound antibody was washed off and the cells plated at 10^4 cells/well. Isolated NK cells from healthy donors or wild-type mice were labeled with calcein-UV Cell Tracker (Invitrogen, Carlsbad, CA) and stimulated with IL-2 (R&D Systems). NK cells were used as effector cells at effector: target ratios (E:T) of 6:1. After 4 h, cells were stained with 7AAD, and analyzed by flow cytometry. The percentage of specific lysis was determined by: %SL = $100 \times (ER-SR)/(MR-SR)$. ER, SR, and MR represent experimental, spontaneous and maximum cell death. Data were normalized to the media control.

In vivo studies

In vivo procedures were carried out at CBM-SO (Madrid, Spain) in accordance with the guidelines approved by the Animal Experimentation Ethics Committee of the Spanish National Research Council. For the in vivo proof-of-concept analyses, a novel systemic

xenograft model was developed by engrafting the human t(14;14)-carrying T-cell leukemia line SUP-T11 into sub-lethally irradiated (1.5 Gy) immunodeficient mice. To this end, 5×10^5 cells/mouse were intravenously (*i.v.*) injected into 6–10 weeks-old RAG2^{-/-}γc^{-/-} [27] or NOD.Cγ-Prkdcscid-IL2rgtm1Wjl/SzJ mice (NSG; The Jackson Laboratory, Bar-Harbor, ME). Bioluminescent models were performed by transducing SUP-T11 cells with lentiviruses [28]. To measure luminescence, 150 mg/Kg of D-Luciferin was administered intraperitoneally and tumor burden was monitored using the Xenogen IVIS Lumina II imaging system (Caliper Life Sciences, Waltham, MA). The photon flux emitted by the luciferase-expressing cells is measured as an Average radiance (photons/sec/cm²/sr). Imaging analysis is performed using the Living Image™ Software 3.2 (Caliper Life Sciences). Mice showing local tumor growth at the injection site (and which developed no systemic disease therefore) were discarded from analyses and sacrificed for ethical reasons. Similarly, enrolled animals showing endpoint weight loss or clinical signs were euthanized. PB and organs [spleen, lymph node (LN), bone marrow (BM), brain, lungs, and liver] were harvested in every animal. From each organ collected, one half was mechanically disaggregated and conserved in PBS at 4 °C for flow cytometry analyses. The percentage of tumor cells was determined using specific (non cross-reacting with murine cells) anti-hCD45-PerCP (clone 2D1) and anti-hCD5-APC (clone L17F12) mAbs (all from BD Biosciences). In some cases, the viability of tumor cells was quantitatively determined by flow cytometry with the Annexin-V-FITC/7-AAD assay on SUP-T11 cells. Similarly, proliferation was determined by staining with anti-Ki67-PE (BD Pharmingen). The distribution of leukemic cells within the different organs was determined by immunohistochemistry (IHC) against hCD45. Briefly, halves of organs and tissues extracted from mice were fixed in 4% neutral buffered formaldehyde, paraffin-embedded, and sliced in 4 µm sections. For human CD45 immunohistochemistry, the antigen retrieval was performed with tris-EDTA pH 9. Slides were stained with 1:100 anti-hCD45 (clone 2B11&PD7/26, Cell Marque, Rocklin, CA) by using the Dako REAL EnVision Detection System (Dako, Glostrup, Denmark).

Statistics

Unless otherwise stated, quantitative variables are expressed as measures of central tendency (mean) and dispersion (SD, SEM). Quantitative variables with equal variances (Levene's test) were analyzed using t-test or ANOVA. Mann-Whitney-U or Kruskal-Wallis tests were used for heteroscedasticity. Survival curves were analyzed by the Kaplan-Meier method and log-rank test. A Cox regression model was used to estimate cumulative

risk for OS (hazard ratio, HR) vs proportion of CCR7⁺ T-PLL cells. Significance was set at values of < 0.05(*), < 0.01(**) or < 0.001(***)).

Results

CCR7 is a functional receptor highly expressed on T-PLL cells

B-cell malignancies with high levels of CCR7 show a widespread nodular dissemination [29]. As T-PLL displays such an infiltration pattern, we asked whether CCR7 levels were likewise augmented in this disease. CCR7 surface expression was analyzed, at diagnosis, by flow cytometry on malignant T-cells in peripheral blood (PB) from 109 T-PLL patients, and on T-cells from 14 healthy donors. We found that CCR7 expression in T-PLL lymphocytes was consistently higher than in normal PB pan-T-cells [median of fluorescence intensity relative to the control (RMFI) in T-PLL vs healthy T-cells: 5.591 ± 0.7163 vs 1.094 ± 0.3021 ; Fig. 1 a]. Since surface chemokine receptor expression is sensitive to several factors, we ruled out that CCR7 expression was not affected by antibody-induced internalization (Supplementary Figure 1), the anticoagulant used, time from sample extraction to flow cytometry tests, or isolation processes in fresh samples at diagnosis (data not shown). Also, a higher proportion of CCR7-expressing cells was found in T-PLL samples (T-PLL vs healthy T-cells: 75.95 ± 3.187 vs 39.76 ± 6.030 , Fig. 1 b), where CCR7 expression was found to be homogeneous whereas a bimodal distribution was seen in healthy PB pan-T-cells due to the presence of CCR7-positive (T_N , T_{CM}) and CCR7-negative subsets (effector cells) in a given sample (Fig. 1c). To further characterize CCR7 expression we also compared surface levels in our T-PLL cohort to the expression in different non-tumor T-cell subsets including CCR7-expressing T_N and T_{CM} cells (in both $CD3^+CD4^+$ and $CD3^+CD8^+$ subsets). Results shown in Fig. 1a,b,c reveal that there is no overall difference in RMFI or in the proportion of CCR7-expressing cells between T-PLL and normal $CD4^+$ T_{CM} cells. In addition, a remarkable proportion of T-PLL cases showed a CCR7 profile similar to a T_N cell profile. These results suggest that CCR7 expression in T-PLL comprises a spectrum of differentiation ranging from T_N to T_{CM} cell phenotypes. Accordingly, when we studied the flow-cytometry based expression pattern of CD45RO/CD45RA in our cohort, we could corroborate that most cases resembled a memory phenotype and that similar proportions of memory subsets were found in CCR7-negative and CCR7-positive groups (Table 1; RA^+RO^+ : 33% in CCR7⁻ vs 25% in CCR7⁺; RA^-RO^+ : 66% vs 67%).

Finally, CCR7 was functional in T-PLL cells and triggered migration towards its cognate ligands, the chemokines CCL19 and CCL21. CCR7 induced a bell-shaped dose-dependent migratory response with a maximum induction by 1 μ g/mL with both chemokines (Fig. 1d), a concentration within the range estimated to exist in T-zones of lymph nodes (LN) [30].

CCR7 expression is associated with shorter overall survival of T-PLL patients

CCR7 expression on malignant cells is associated with poor OS in solid tumors [31]. Nonetheless, such correlation has not been described before in blood cancers. To address this question, we dichotomized the uniformly treated T-PLL patients (backbone of alemtuzumab induction) of our cohort by setting a cut-off equal to the 20.5% of CCR7⁺ T-PLL cells as determined by ROC analysis (sensitivity of 84.55%; 95% CI: 76.93 to 90.44%). This cut-off agreed with those of various cell markers previously described [32].

Patients were then grouped into CCR7-positive (> 20% positive cells; 83/96 (86.5%) patients) or CCR7-negative ($\leq 20\%$; 13/96 (13.5%)). Accordingly, a density plot showing the distribution of CCR7 positivity across all cases clearly indicated that CCR7 expression was divided into these two groups (Supplementary Figure 2) and precluded the use of a continuous expression of CCR7 in survival analyses. With these settings, the median OS period was higher in CCR7-negative patients (Fig. 1e: 38.23 vs 22.33 months; log-rank $p = 0.0105$; HR = 0.4612; C.

I (95%) = 0.2549–0.8346). Four years after diagnosis, 44.8% of CCR7⁻ patients survived whereas this proportion decreased in the CCR7⁺ group to 26.65%; eight years after diagnosis the proportions were 33% in CCR7⁻ patients vs 0% in CCR7⁺ patients. Fifteen cases in the CCR7⁺ group and 4 in the CCR7⁻ subset received an allo-HSCT. To further study causality between expression of CCR7 and OS, Cox regression analyses were conducted (Table 2). No association with OS was found when we tested a continuous expression of CCR7, however, a HR of 2.426 ($p = 0.044$) was found for cases expressing CCR7 as compared to negative cases. Notably, when risk analyses took into account only patients with positivity for CCR7 (Table 2) no significant differences in risk were found, indicating that all patients with expression of CCR7 had similar poor outcomes regardless of the proportion of CCR7⁺ T-PLL cells at diagnosis.

CCR7 ligands trigger receptor signaling, a process effectively blocked by CCR7 mAbs

The expression and functionality of CCR7 in T-PLL suggested this molecule to be interrogated as a therapeutic target in T-PLL. Given the lack of knowledge on the role

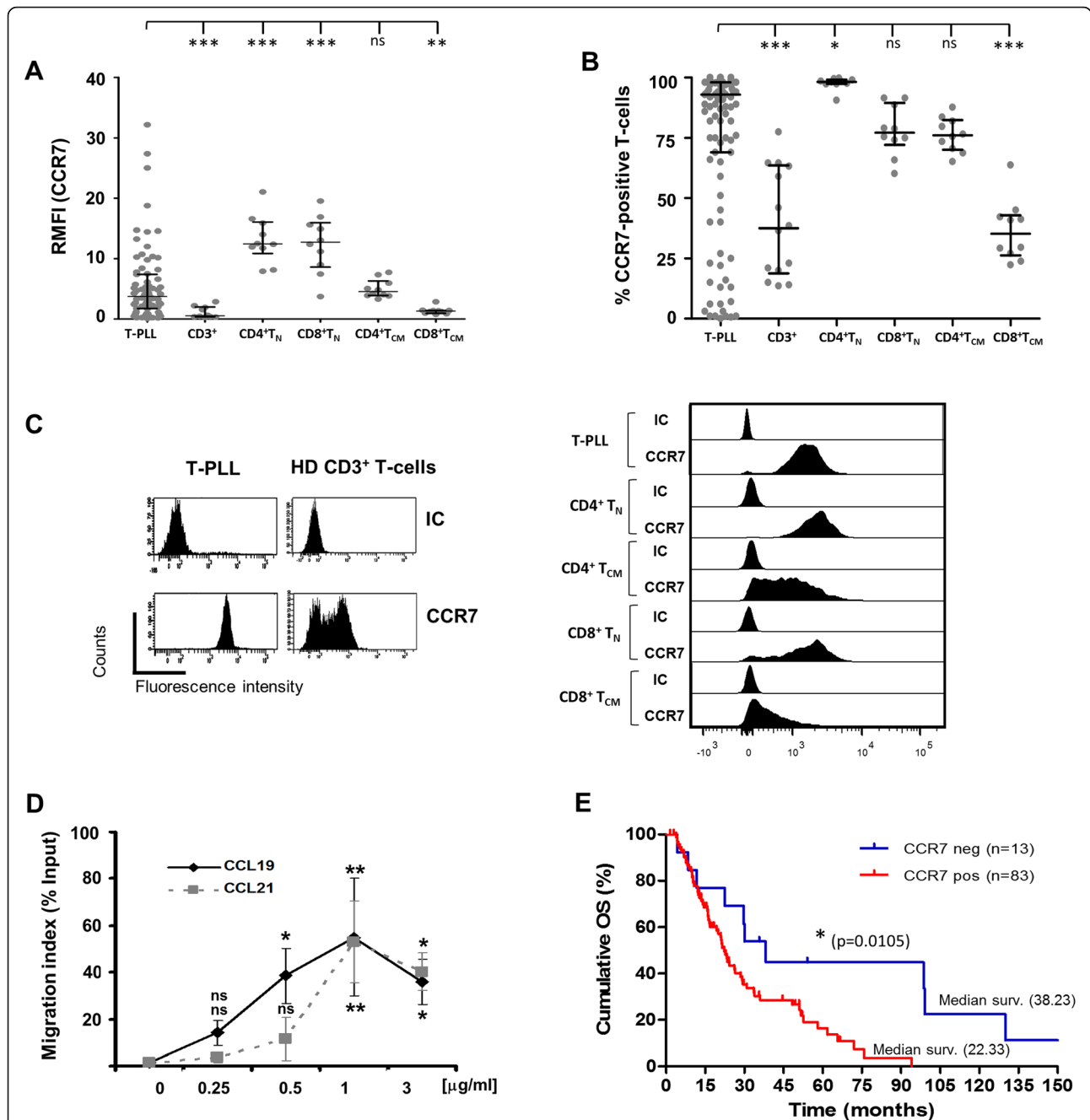


Fig. 1 T-PLL cells express high levels of functional CCR7 that is associated with shorter overall survival (OS). **a** CCR7 relative median fluorescence intensity (RMFI) in T-PLL cells compared to T-cells from healthy donors. T-cells obtained from PB samples of patients ($n = 75$) or healthy donors ($n = 10$) were analyzed by flow cytometry to determine CCR7 surface density measured as MFI relative to a corresponding IC. **b** Proportion of CCR7-positive T-cells is high in T-PLL. The percentage of CCR7-positive T-cells was determined in T-PLL patients ($n = 109$) and healthy donors ($n = 14$). In A-B the median \pm interquartile range is shown. **c** CCR7 expression in pan T-cells or specific CCR7-expressing T-cell subsets (T_N, T_{CM}) from a representative patient and a healthy donor. The expression pattern and intensity of CCR7 is shown. **d** T-PLL cells migrate towards CCR7 ligands. Chemotaxis assays with T-PLL cells ($n = 5$) were performed with different doses of CCL19 and CCL21 (x axis). Each symbol represents the percentage of migrated cells in each experimental condition relative to the number of cells loaded in the upper chamber (% input). The mean \pm SEM is shown. **e** CCR7 surface expression on T-PLL cells is associated with OS. The surface expression (% positive cells) of CCR7 was assessed by flow cytometry in T-PLL patients with clinical follow-up data ($n = 96$). At diagnosis, cases were classified as CCR7 positive ($> 20\%$ CCR7⁺ T-PLL cells) or negative ($< 20\%$ CCR7⁺ T-PLL cells). OS was estimated and compared by Kaplan–Meier curves and log-rank test, respectively. The p-value of the log-rank statistical test is given. *, $p < 0.05$; **, $p < 0.01$; ***, $p < 0.001$; ns, not significant

Table 1 CD45RO/RA pattern of CCR7-negative vs CCR7-positive T-PLL cases ($n = 82$ cases)

	CCR7 ⁻ (number of cases)	CCR7 ⁺ (number of cases)
Naïve CD45RO ⁻ CD45RA ⁺	0	3
Pan-memory CD45RO ⁻ CD45RA ⁻	0	2
Transition CD45RA ⁺ /RO ⁺	3	16
Central or effector memory CD45RA ⁻ /RO ⁺	6	43
Median age and range (years)	68 [32–81]	
	Fisher's exact test ($p = 0.86$) Pearson's Chi-squared test ($p = 0.82$).	

of chemokines receptors in T-PLL, we studied in more detail the operational CCR7-downstream pathways and the mechanisms of action (MOA) mediated by a blocking anti-CCR7 mAb on primary T-PLL cells. This characterization included analyses of the activity displayed by the Fab region (which can block the target/ligand interaction) and by the Fc region, which can engage the immune cells or proteins, thus promoting effector activities.

First, we explored MEK/ERK1/2, PI3K/AKT, and Rho/ROCK/MLC as the main CCR7 signaling cascades [23] to be inducible in primary T-PLL cells upon ligand binding. In 6 samples tested, both ligands induced ERK1/2, AKT, and MLC phosphorylation, which peaked after 1, 2, and 5 min, respectively (Fig. 2 a). Additionally, we confirmed that activation of these cascades was blocked by an anti-CCR7 mAb.

CCR7 mediates T-PLL cell migration and invasion, which are neutralized by CCR7 mAbs

As CCR7 mediated T-PLL cell chemotaxis (Fig. 1d), we postulated that neutralizing this process could prevent leukemic dissemination to CCL19/CCL21 producing locations (SLO and CNS). As a proof-of-concept, anti-CCR7 mAb blocked in vitro migration of primary T-PLL cells towards CCL19/CCL21 in uncoated transwell chambers (Fig. 2b). The mAb also abrogated cell processes necessary for the migratory response [33] such as actin-skeleton reorganization (Supplementary Figure 3-

A-B) or the development of uropods (Supplementary Figure 3-C-D). Furthermore, we performed chemokine-induced invasion assays in transwell chambers coated with Matrigel (Fig. 2c). Compared to basal invasion, both ligands increased the number of invading cells (albeit CCL19-mediated invasion seemed stronger) and such invasion was almost completely inhibited by the anti-CCR7 mAb.

Through TEM assays we also confirmed that T-PLL cells efficiently migrated across endothelium (HUVEC monolayers) in response to CCL19/CCL21 (Fig. 2d). In these experiments, CCL21 outperformed CCL19 probably due to the ability of CCL21 to bind endothelium through its C-terminal tail [34]. Again, the anti-CCR7 mAb completely blocked migration towards both chemokines (Fig. 2d). Release of the gelatinases MMP-2 and -9 by tumor cells degrades matrices and/or basement membrane, which is a key step in invasion/metastasis. To assess whether these enzymes are regulated by CCR7 ligation, T-PLL cells were incubated with/without chemokines and cell media were then analyzed by gelatin zymography. Figure 2e shows that tumor cells constitutively secreted activated MMP-9 with no traces of activated MMP-2. Although CCL19/CCL21 promoted differential invasion across Matrigel™ or HUVEC (Fig. 2c.d), both chemokines significantly increased the secretion of MMP-9 in zymographies to a similar extent, which was in turn blocked by exposure to anti-CCR7 mAbs (Fig. 2 e).

T-PLL cell survival, promoted by CCR7 ligands, is impaired by anti-CCR7 mAbs

CCR7 promotes cell survival and proliferation in different hematological malignancies [23, 35]. Here, exposure of T-PLL cells to either CCL19 or CCL21 induced a moderate but significant increase of viability in long-term suspension cultures (Fig. 2f) without affecting proliferation (Fig. 2 g). This proactive impact on cell viability was abrogated by the anti-CCR7 mAb, which likely promoted cell death by blocking these CCR7-mediated pro-survival signals because this antibody did not mediate direct cell death upon target binding in the absence of these chemokines (Fig. 2h).

Table 2 Cox regression analyses

	HR	p -value	95% CI	n° cases	LR Chi2	Prob > Chi2
% CCR7 (continuous)	1.004	0.235	0.997–1.013	92	1.52	0.217
% CCR7 (high/low)	2.426	0.044	1.026–5.739	93	5.08	0.024
% CCR7 within the CCR7-high group (continuous)	0.988	0.092	0.973–1.002	80	2.43	0.119

Abbreviations: CI Confidence interval, HR Hazard ratio, LR Likelihood ratio; high: $\geq 20\%$ positive T-PLL cells by flow cytometry; low: $< 20\%$ positive T-PLL cells by flow cytometry

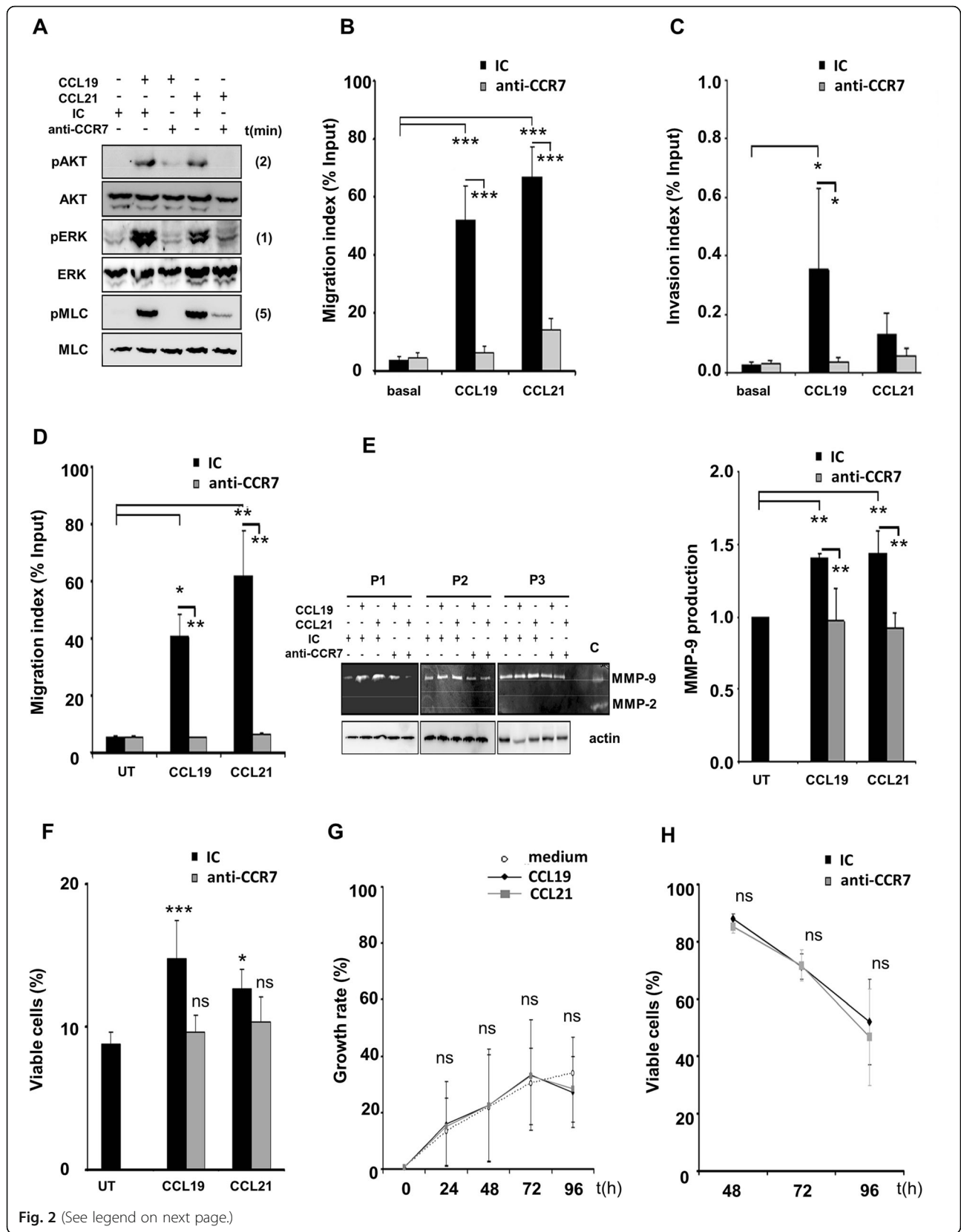


Fig. 2 (See legend on next page.)

(See figure on previous page.)

Fig. 2 Blocking CCR7 neutralizes target-mediated cell functions on T-PLL. **a** Anti-CCR7 mAb blocks CCR7 activation and signal transduction in T-PLL cells. Serum-starved T-PLL cells were pre-treated with 10 µg/mL of anti-CCR7 or the respective IC for 30 min and then treated with CCL19 or CCL21 for different time points. Cell extracts were analyzed by Western blot. The figure shows representative blots from 6 independent experiments. **b** Anti-CCR7 mAb neutralizes CCR7-mediated T-PLL cells migration in response to CCL19 and CCL21. Chemotaxis of T-PLL cells induced by CCL19 and CCL21 was assayed in uncoated transwell chambers for 4 h. When indicated, cells were pre-treated with 10 µg/mL of anti-CCR7 mAb or the respective IC ($n = 6$). **c** Blocking CCR7 abrogates T-PLL cells invasion driven by CCL19 and CCL21. T-PLL cells with or without previous incubation with anti-CCR7 mAb or the matching IC were embedded in Matrigel™ before exposure to chemokines for 24 h. Values represent the percentage of migrated cells referred to the total cells added ($n = 4$). **d** Anti-CCR7 mAb inhibits target-mediated T-PLL cells migration across endothelium. T-PLL cells were incubated on the upper chamber of transwell filters coated with TNF α -activated HUVEC, in the presence or absence of the indicated mAbs. Then chemokines were added and after 4 h, the cells were counted by flow cytometry. Values represent the percentage of migrated cells referred to the total cells added ($n = 4$). **e** Anti-CCR7 mAb reduces target-mediated MMP-9 secretion. CCR7 engagement up-regulates MMP-9 in T-PLL cells. Leukemic cells from 3 different patients (P1, P2 and P3) were pre-treated with anti-CCR7 mAb or an IC (10 µg/mL) and then incubated with/without CCL19 or CCL21 (1 µg/mL) for 24 h. The concentrated conditioned media were analyzed by gelatin zymography to detect MMP-2 and MMP-9 secretion. MMP-9 was identified as the 92-kDa proactive form. Cell pellets of each point were lysed and cell extracts were used to detect actin by Western blotting as loading control (C, fetal bovine serum (FBS) used as positive control showing the degradation bands of active MMP-9 and MMP2). The average quantification of MMP-9 secretion (arbitrary units) for the 3 samples studied is given; basal levels of MMP-9 on bovine serum albumin (BSA) and without chemokines were normalized to 1. **f** Anti-CCR7 mAb affects target-induced pro-survival signaling pathways. CCR7 ligands increase T-PLL cells survival, a process blocked by anti-CCR7 mAb. Cells from 4 patients were incubated in 1% FBS medium alone or with CCR7 ligands (1 µg/mL) for 72 h. Where indicated, cells were also incubated in the presence of 10 µg/mL of anti-CCR7 mAb or an IC. The percentage of viable 7-AAD⁻ Annexin-V⁻ cells at 72 h is shown. **g** CCR7 ligands do not induce proliferation of T-PLL cells. T-PLL cells ($n = 5$) were harvested and stained with CellTrace™ Violet reagent. Then, 5×10^5 cells were cultured with 1% FBS complete medium alone or supplemented with CCL19 or CCL21. Every 24 h the successive generations of live cells were analyzed. **h** Anti-CCR7 mAb does not induce direct apoptosis on T-PLL cells. Leukemic cells were incubated with anti-CCR7 (10 µg/ml) or the corresponding IC in complete medium with 10% FBS ($n = 5$). Every 24 h the effect of the antibody was studied by Annexin-V/7-AAD double staining. In B, C, D, E, F, G, H, bars (or symbols) represent mean \pm SEM. *, $p < 0.05$; **, $p < 0.01$; ***, $p < 0.001$; ns, not significant

Anti-CCR7 mAb triggers a strong CDC activity against T-PLL cells

Therapeutic mAbs can induce target cell death through Fc-mediated cytotoxicity, including CDC and ADCC. In this study, the anti-CCR7 mAb triggered a strong in vitro CDC activity against T-PLL cells obtained from 8 patients not treated before with alemtuzumab (Fig. 3 a). This was observed at concentrations as low as 0.125 µg/mL. Similarly, alemtuzumab mediated a significant CDC but was outperformed by anti-CCR7 mAb at dose ranges of 0.125–5 µg/mL. Anti-CCR7 exposure was also highly effective against cells from four alemtuzumab-relapsed/refractory (R/R) patients (Fig. 3 b) and against cells from SS patients (Supplementary Figure 4).

The differences in CDC observed between alemtuzumab and the anti-CCR7 mAb can be attributed to a different isotype (human IgG1 vs mouse IgG2a), but also to different target surface expression levels. Compared with CD52, which is highly expressed on T-prolymphocytes [36], CCR7 levels were slightly higher in T-PLL cells from treatment naïve patients (Fig. 3 c,d,e). Accordingly, significantly diminished levels of CD52 were seen in three out of four R/R patients while the other lacked the target (Fig. 3 c,d,e). In R/R patients a non-significant reduction of CCR7 expression was also observed. Despite this, CCR7 expression levels were enough to mediate CDC upon anti-CCR7 treatment, while alemtuzumab-mediated CDC was abolished (Fig. 3b).

Another receptor targeted in T-cell malignancies is CCR4. In both naïve and alemtuzumab-R/R patients,

expression of CCR4 was much lower than CD52 and CCR7 (Fig. 3 c,d,e) thus suggesting that anti-CCR4 antibodies, such as mogamulizumab, are not suitable for treating T-PLL. As seen with CCR7 and CD52, CCR4 expression was also decreased in R/R patients, thus indicating that down-regulation of surface markers is a common event in such population.

Finally, anti-CCR7 mAb did not trigger ADCC of T-PLL cells mediated by the recruitment of effector mononuclear myeloid cells (data not shown) or NK cells isolated from human PB (Fig. 3f) or from mouse spleens (Fig. 3 g), suggesting that anti-CCR7 mAb was ineffective in activating the Fc γ R on immune cells.

Antibody-based CCR7 targeting is effective in novel xenograft models of T-PLL

To further evaluate the utility of anti-CCR7 therapy in T-PLL we conducted in vivo proof-of-concept tests. Since the mAb did not recognize murine CCR7, we performed these studies in novel systemic xenogeneic models developed in host immunodeficient mice by intravenous injection of the SUP-T11 T-cell leukemia line [37], which, at the molecular level, resembles T-PLL as close as possible [38]. In these models, the tumor spread through PB, lymphoid organs (LN, spleen, and BM) and non-lymphoid tissues (liver, lung, and brain) (Supplementary Figure 5). Despite the fact that some characteristic surface markers of T-PLL were absent in SUP-T11 cells (e.g. CD4, CD8, CD25 and CD52), SUP-T11 was selected based on laboratory findings

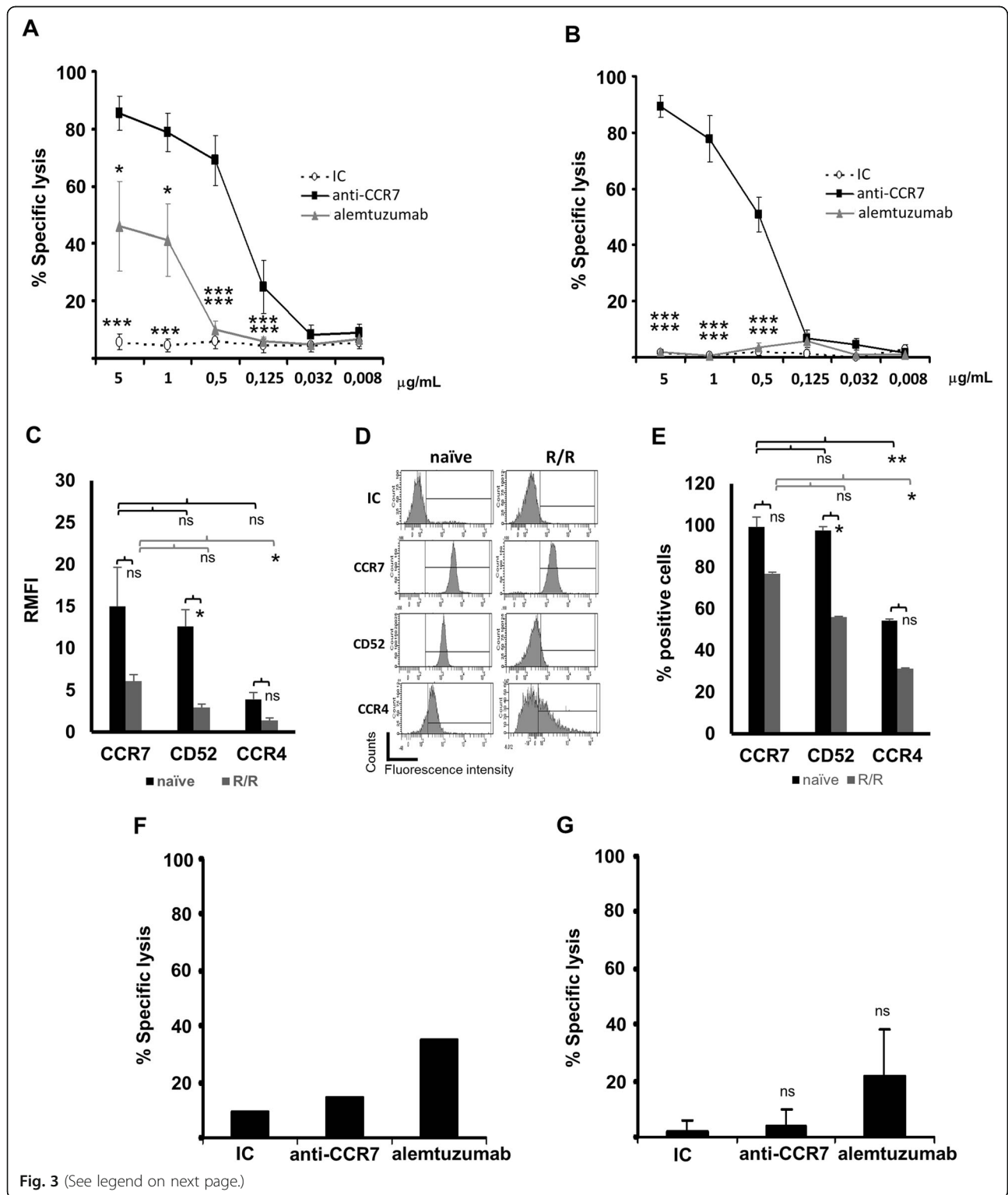


Fig. 3 (See legend on next page.)

(See figure on previous page.)

Fig. 3 Anti-CCR7 mAb mediates a strong CDC on T-PLL cells. **a** CDC on alemtuzumab-naïve patients. Leukemic cells from T-PLL patients ($n = 8$) were incubated with anti-CCR7, anti-CD52 (alemtuzumab), or an IC at the indicated concentrations and then exposed to rabbit complement for 1.5 h. The percentage of specific cell lysis was determined through quantification of 7-AAD incorporation by flow cytometry. **b** CDC on alemtuzumab-refractory patients. Specific lysis on T-PLL cells from 4 refractory patients was assayed as described in A. **c** Relative median fluorescence intensity (RMFI) of CCR7, CD52 and CCR4 in T-PLL cells from alemtuzumab-naïve or alemtuzumab-refractory patients (R/R). Cells obtained from PB samples of patients not treated with alemtuzumab ($n = 8$; black bars) or refractory to this mAb ($n = 4$; grey bars) were analyzed by flow cytometry to determine CCR7, CD52, and CCR4 surface density measured as MFI relative to a corresponding IC. **d** CCR7, CD52, and CCR4 surface expression in T-PLL cells from one representative alemtuzumab-naïve or -refractory patient. **e** Proportion of CCR7⁺, CD52⁺ and CCR4⁺ in T-PLL cells from alemtuzumab-naïve or alemtuzumab-refractory patients. The percentage of positive cells was determined in naïve ($n = 8$; black bars) and refractory patients ($n = 4$; grey bars). **f** and **g** Anti-CCR7 antibody does not mediate antibody-dependent cell-mediated cytotoxicity (ADCC). T-PLL cells were incubated with media alone or in the presence of an IC, anti-CD52 (alemtuzumab) or anti-CCR7 antibodies. **f** Isolated and IL-2-stimulated human NK cells from a healthy donor were used as effector cells at an effector to target (E:T) ratio of 6:1 ($n = 1$). **g** Isolated and IL-2-stimulated wild-type mouse NK cells from spleen ($n = 2$) were used as effector cells at an effector to target (E:T) ratio of 6:1. After 4 h, the percentage of T-PLL cells killed by ADCC was determined through 7-AAD staining by flow cytometry. In A, B, C, E, F, and G, bars (or symbols) represent mean \pm SEM. *, $p < 0.05$; **, $p < 0.01$; ***, $p < 0.001$; ns, not significant

demonstrating a close resemblance with T-PLL regarding CCR7 (Fig. 4 a) and based on the presence of the T-PLL signature lesion of t(14;14)(q11;q13.2), an alteration found in other mature T-cell leukemia [39, 40], but extremely rare in immature stages [1, 41]. Here, we confirmed this translocation (and the resulting TCL1 protein overexpression) and, in addition, the strong positivity for CD7 and CD26 (another characteristic markers of T-PLL) [1], and the post-thymic, mature TCR $\alpha\beta$ ⁺ naïve phenotype characterized by intense expression of CCR7 and CD45RA, and negativity for CD34, CD10, TdT, CD117, HLA-DR, and the cortical thymic marker CD1a (Supplementary Figure 6). Finally, we determined that SUP-T11 cells migrated towards CCR7 ligands in vitro (Fig. 4 b) and confirmed that the anti-CCR7 mAb was effective in blocking such migration and in inducing CDC on SUP-T11 cells (Fig. 4 b,c).

To evaluate the in vivo anti-tumor efficacy of the anti-CCR7 mAb, first we used as hosts the RAG2^{-/-} γ c^{-/-} strain, which lacks T, B, and functional NK cells, but has complement activity [42], thus allowing in vivo testing of the MOA characterized in vitro. To better represent a clinical scenario for an anti-CCR7 treatment, we used a post-implantation set-up in which tumor cells had migrated to their target organs and niches (Fig. 4d). Accordingly, treatment was initiated 3 weeks after intravenous inoculation of SUP-T11 cells, once they were found in the BM (data not shown). Then, two groups ($n = 4$) were treated with either 200 μ g/mouse (~10 mg/kg) of anti-CCR7 mAb or IC twice on weeks 3–5 and once on weeks 7–9. In this model, anti-CCR7 mAb significantly increased OS (Fig. 4e). While the survival rate in the IC group was 0% (median survival of 86.5 days), all mice treated with the anti-CCR7 mAb remained alive at the time when the last mouse in the control group had to be euthanized. Animals treated with the anti-CCR7 mAb did not develop clinical signs, gained weight and survived up to 127 days, the time when the animals were sacrificed which was considered

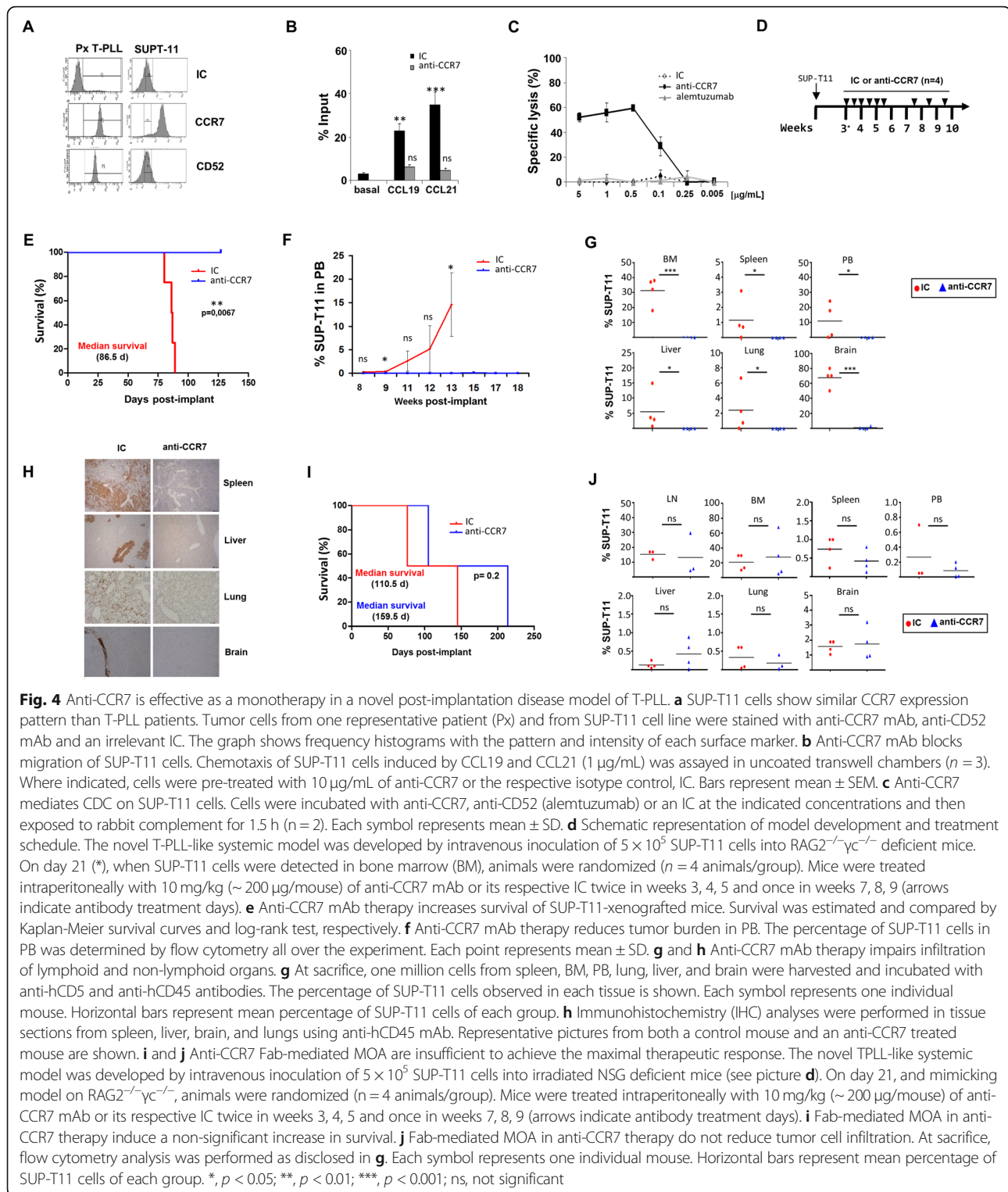
as a bona fide disease-free period. Accordingly, no presence of SUP-T11 cells was detected in PB (Fig. 4f) whereas PB infiltration of control animals increased over the time. At the time of sacrifice, no SUP-T11 cells were seen in lymphoid and non-lymphoid tissues from anti-CCR7 treated animals. Conversely, there was consistent infiltration of these tissues in the control group (Fig. 4 g, h).

In vivo anti-tumor activity of targeting CCR7 relies on both Fab- and Fc-mediated action

The potential of the anti-CCR7 antibody was further studied in irradiated NSG mice that besides lacking T, B, and NK cells, also lack complement activation [42]. These settings were used to examine the therapeutic benefit of blocking CCR7 by the Fab region, excluding Fc-mediated cytotoxicities. Of note, the anti-CCR7 mAb did not trigger in vitro Fc γ R-mediated activities on effector cells (Fig. 3 f,g) and irradiation provided a complementary way to abrogate activation of myeloid subsets. In this NSG model, we repeated the treatment schedule used in RAG2^{-/-} γ c^{-/-} mice (Fig. 4d). In the model the median OS in controls was 110.5 days, compared to 160 days in anti-CCR7 treated mice, and 50% of anti-CCR7 treated mice were alive when the last control mouse was euthanized (Fig. 4 i). Nonetheless, log-rank tests showed no statistical differences between the survival curves of both groups, and anti-CCR7 therapy did not significantly influence the presence of tumor cells in the tissues (Fig. 4j). Together, these results indicate that in anti-CCR7 mAb-based therapy both Fc- and Fab-mediated activities are necessary to achieve the maximum therapeutic benefit in T-PLL.

Preventive anti-CCR7 mAb treatment tends to delay tumor onset and to reduce tumor burden in the T-PLL model

CCR7 plays critical roles in enabling tumor cells accessing and establishing tumor microenvironments (TME),



e.g. shown in syngeneic models of Burkitt lymphoma [43] where genetic deletion of CCR7 delayed arrival at such milieu and niche formation, and impaired cross-talk between malignant and accessory cells [43]. Based on this, we aimed to study whether 'preventive'

administration of anti-CCR7 mAb could impact disease establishment. To trace engraftment of tumor cells, we developed a new bioluminescent model in which SUP-T11 cells, stably expressing luciferase, were intravenously injected into NSG mice. Expression of CCR7 on

these SUP-T11-luc⁺ cells was identical to their parental cells (data not shown). Two groups of 4 animals each were treated with either a single dose of 100 µg/mouse (~ 5 mg/kg) of the anti-CCR7 mAb or IC 2 h before intravenous inoculation of SUP-T11-luc⁺ cells (Fig. 5a). Bioluminescence images were obtained every 2 weeks until week 10. Notably, single-dose anti-CCR7 treatment seemed to delay disease onset to week 8 (as determined by the first appearance of bioluminescent signals) and also tended to modestly reduce tumor burden, although no statistical differences were found between groups (Fig. 5 b,c). Similarly, post-mortem analysis demonstrated that this 'preventive' treatment had a mild though non-significant impact on the cell viability (specifically in LN) and proliferation (in LN and other tumor niches like spleen or brain) of SUP-T11-luc⁺ cells (Fig. 5 d). Together, these results suggest that CCR7 might act as a key player in niche colonization and formation by SUP-T11 cells and advance a potential role of anti-CCR7 therapy in impairing the formation of pro-tumorous sanctuaries in T-PLL, such as LN or brain, by reducing migration to tumor niches, and, in addition, by affecting survival and proliferation of tumor cells within these locations.

Discussion

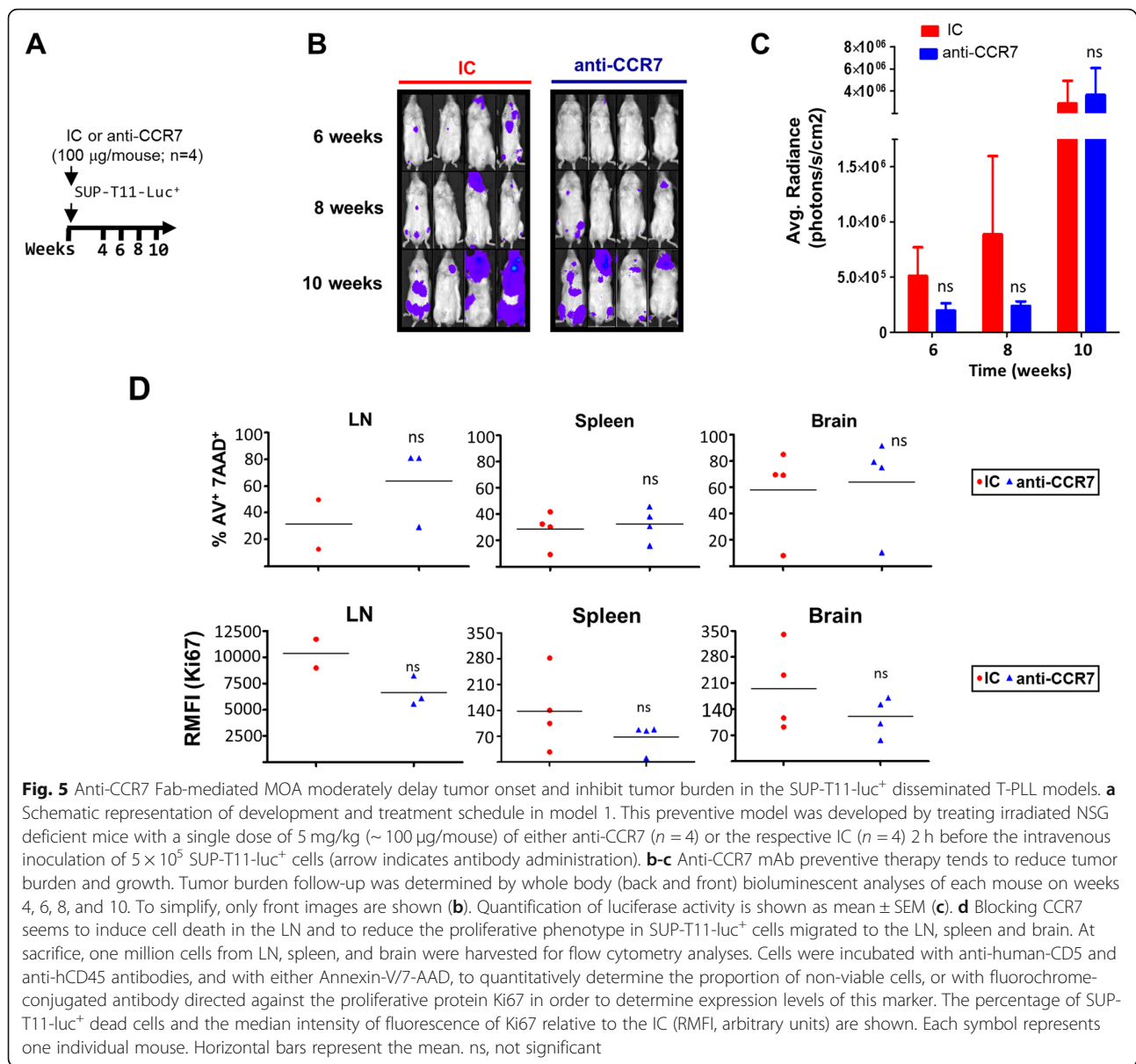
T-PLL is an aggressive disease with a poor prognosis. Despite allo-HSCT is given under curative intent, disease control for more than 5 years is documented in a minor fraction of patients [1, 17]. Therefore, curative therapies are not available for the majority of cases. In this work, we show that CCR7 is highly expressed on T-PLL cells and that this expression has a negative impact on patient survival. Indeed, in our cohort, CCR7 expression was found in 83 out of 96 cases (~ 86.5%) and patients lacking CCR7 (13.5%) tended to have a better overall prognosis. Nonetheless, our results on CCR7 expression also confirm that T-PLL is a very complex and heterogeneous disease, therefore, further confirmation of the impact of CCR7 in short T-PLL patient survival is needed with standardized flow cytometry protocols in larger cohorts. Even though, this is the first time that such a correlation is presented in blood cancers that makes CCR7 a reasonable therapeutic target in T-PLL.

Our results also suggest that CCR7 is overexpressed in T-PLL when compared to pan-T cells obtained from HD and that expression in T-PLL certainly resembles a transition in the differentiation stages of T-cells, with a vast majority of patients showing CCR7 expression similar to that found in T_N and T_{CM} phenotypes. When analyzing these data in the context of an anti-CCR7 therapeutic approach, we could show that (i) a relevant proportion of T-PLL patients would potentially be amenable to this treatment as they strongly express

CCR7 and (ii) that one could potentially expect a limited hematologic toxicity since not all normal T-cell subsets of the patient would be targeted (e.g. pathogen-specific CCR7⁻ effector cells).

In addition, we demonstrate CCR7 functionality in the spread of T-PLL. CCR7 is shown to trigger migration and invasion of T-PLL cells and to facilitate an invasive phenotype by promoting the secretion of MMP-9. Our data also suggest that CCR7 enables access of T-PLL T-cells to lymphoid and non-lymphoid organs thus confirming the role of CCR7 guiding hematogenous and lymphatic spread of malignant cells [19, 21, 29, 44–46]. In these localizations, and more specifically in the LN, CCR7 may mediate survival of T-PLL cells upon CCR7 ligand engagement, as suggested by our in vitro and in vivo studies. Accordingly, stromal cells in the LN may confer resistance to spontaneous apoptosis by secreting CCL19 and IL-7 [47]. In addition, CCR7 may mediate proliferative cues on T-PLL cells. Although we do not show a direct impact of CCR7 blockade on in vitro proliferation, we cannot exclude that leukemic cells guided via CCR7-ligand based chemotaxis to protective niches (e.g. brain, spleen and LN) could find other proliferative stimuli such as soluble factors or other cell types, including dendritic cells or stromal cells [21, 22, 43, 48]. Indeed, we show that targeting CCR7 has an impact on proliferating Ki67⁺ tumor cells in vivo.

In T-PLL, alemtuzumab responses are transient and disease progression and acquisition of resistance are inevitable [1]. Therefore, alternative treatment strategies are urgently needed. In this work we also evaluated mAb-based anti-CCR7 therapy as a novel tool of treatment in this disease. Our findings support a double mechanism of action of this type of antibodies consisting in the combination of cell killing and blocking of cell spread and niche homing (Supplementary Figure 7). Anti-CCR7 mAbs killed leukemic cells derived from both untreated and alemtuzumab-refractory patients through host effector mechanisms, specifically CDC. Also, the anti-CCR7 mAb used in this study has an additional mechanism to induce T-PLL cell death, namely by blocking the interaction of CCR7 with its ligands and thus disrupting pro-survival pathways. We did not specifically study which signaling molecules are involved in this process, however, blocking CCR7 abrogated PI3K and ERK activation, two important components of CCR7-mediated pro-survival pathways in hematological malignancies [23, 35] that have shown to be relevant in T-PLL pathogenesis [49, 50]. In T-PLL, disease distribution is an important factor determining outcome. For example, the proportion of cases that respond to alemtuzumab is low in patients with CNS disease [1] and/or bulky LN masses [8, 51]. In this regard, anti-CCR7 showed here to be effective in eradicating tumor cells



from several localizations, including LN and CNS. Anti-CCR7 therapy also inhibited secretion of MMP-9 and blocked T-PLL cell invasion in matrices and through endothelia. Targeting these processes is important to block lymphatic and distant dissemination of tumor cells as inferred from several clinical studies on T-cell lymphomas, chronic lymphocytic leukemia, or solid tumors [19, 24, 29, 46, 52]. Indeed, it is worth highlighting that multiple prominent high endothelial veins (HEV) are often infiltrated by neoplastic cells in T-PLL [53], which suggests CCL21 as a major route for homing into lymphoid tissues and mediating the dissemination of T-PLL cells to different organs. Accordingly, results obtained from our novel in vivo models of T-PLL confirm that blocking CCR7 might be a relevant way to impair

homing of leukemic T-cells to protective niches. Consistent with this action, anti-CCR7 mAbs tended to delay disease onset, most likely by the inhibition of CCR7-guided niche occupation. Similarly, Rhem et al demonstrated that engraftment of CCR7-deficient lymphoma B-cells was associated with a significant delay in the appearance of disease [43].

Overall, our results envision anti-CCR7 mAbs as a promising therapeutic application for T-PLL, a disease where antibodies were not included in recent searches for novel promising drugs. Particularly, anti-CCR7 mAbs could be beneficial in the context of alemtuzumab-relapsed/refractory disease or in patients with low-level CD52 expression [8, 36] or lack of CD52 [54, 55]. According to our data, anti-CCR7 therapy could also target

or avoid CNS infiltration, tackle bulky lymphadenopathies, or prevent T-PLL relapse in settings of minimal residual disease in lymphoid organs or other sites where alemtuzumab is ineffective in tumor cell clearance. To this end, anti-CCR7 mAbs could be used in monotherapy or combined with alemtuzumab, with purine analogs, or with novel small-molecule inhibitors that are under development and that target other, potentially synergistically acting pathways [56–59]. Finally, targeting CCR7 with mAbs may fulfill not only the urgent need for more rationally based therapies in T-PLL, but also in many other CCR7-expressing T-cell malignancies such as SS/MF [20, 60], T-ALL [21, 22], and ATLL [19, 61], in which particularly aggressive diseases characteristically express high levels of CCR7 [19, 61] and where few standard mAb-based treatment strategies have been developed so far.

Conclusions

In this report, we have described for the first time the role of CCR7 in T-PLL. The activity of this receptor associates to clinical outcome and contributes to a wide-spread dissemination of the disease to specific niches where leukemic cells find proliferative and survival cues. Moreover, our results on the activity of an anti-CCR7 mAb, both in vitro and in vivo confirm CCR7 as an attractive molecule for novel mAb-based therapeutic applications in T-PLL, a disease where recent drug screen efforts and studies addressing new compounds have focused on chemotherapy or small molecules.

Supplementary information

Supplementary information accompanies this paper at <https://doi.org/10.1186/s40364-020-00234-z>.

Additional file 1. this file provides additional information on the methods and supplementary figures.

Abbreviations

ADCC: Antibody-dependent cell-mediated cytotoxicity; Allo-HSCT: Allogeneic hematopoietic stem cell transplantation; ANOVA: Analysis of variance; ATLL: Adult T-cell leukemia/lymphoma; BM: Bone marrow; CCR7: C-C chemokine receptor 7; CCL19/21: C-C-chemokine ligand 19/21; CD: Cluster of differentiation; CDC: Complement-dependent cytotoxicity; CNS: Central nervous system; Fab: Fragment antigen-binding; Fc: Fragment crystallizable; FcγR: Fc gamma receptor; HD: Healthy donor; HEV: High endothelial veins; HR: Hazard ratio; HUVEC: Human umbilical vein endothelial cells; IC: Isotype control; IL-7: Interleukin 7; iv: Intravenously; LN: Lymph node; mAb: Monoclonal antibody; MEK/ERK1/2: Mitogen-activated protein kinase / extracellular signal-regulated kinase; MOA: Mechanism of action; MMP: Matrix metalloproteinase; MTCP1: Mature T Cell Proliferation 1; NK: Natural killer; NSG: NOD.Cγ-Prkdcscid-IL2rgtm1Wjl/SzJ mice; OS: Overall survival; PB: Peripheral blood; PBMCs: Peripheral blood mononuclear cells; PI3K: Phosphatidylinositol 3-kinase; RMFI: Relative median of fluorescence intensity; ROCK/MLC: Rho-associated protein kinase / myosin light chain; R/R: Relapsed/refractory; SD: Standard deviation; SEM: Standard error of the mean; SLO: Secondary lymphoid organs; SS/MF: Sézary syndrome / Mycosis Fungoides; T-ALL: T-cell acute lymphoblastic leukemia; TCL1: T-cell leukemia/lymphoma 1; T_{CM}: Central memory T-cells; T_N: Naïve T-cells; TEM: Trans-endothelial migration; TME: Tumor microenvironment; T-PLL: T-cell prolymphocytic leukemia

Acknowledgements

We thank Dr. Francisco Sánchez-Madrid for reagents and advices, Dr. Juan Ruiz for advices, and Lawrence Baron for linguistic and grammatical editing of the manuscript.

Authors' contributions

CCM, PF, AS, RJS, AMJ, TMA, BSL, YPG, AK, EIA, SM, and MH performed in vitro and ex vivo assays. CCM, JL, AS, DJ, SO, LW, SM, EF, MH did the follow-up of patients and created survival curves. CCM, PF, MES, RJS, AMJ, AU, MF, KS, AA, FT, MLT carried out in vivo procedures. CCM, PF, FT, MH, CMC designed the present study and discussed results. CCM, LVP, AS, LW, SO carried out the statistical design and analysis. CCM, FT, MH, CMC wrote the manuscript. The other authors reviewed the manuscript. The author(s) read and approved the final manuscript.

Funding

Funding for this work was by grant PI015/02085 and PI18/01163 from the Fondo de Investigaciones Sanitarias, Ministerio de Sanidad y Consumo, Spain to CMC who was also cofinanced by FEDER funds. CCM and FT were supported by RTC-2015-3318-1 (Ministerio de Economía y Competitividad, Spain). MH was funded by the German Research Foundation (DFG; HE3553/4–2) as part of the collaborative research group on mature T-cell lymphomas, “CONTROL-T” (FOR1961). The José Carreras Leukemia Foundation (03F/2016), the Köln Fortune Program, and the Fritz Thyssen foundation (10.15.2.034MN) supported MH and AS. The Köln Fortune Program also supported LW. SM was supported by the Finnish Cancer Organizations, the Finnish Cancer Institute, Academy of Finland and the Sigrid Juselius Foundation. SM and MH are supported by the ERAPerMed program ‘JAK- STAT-TARGET’. MLT was granted by SAF2016–75442-R (Agencia Estatal de Investigación/ European Regional Development Fund, European Union, Spain).

Availability of data and materials

The datasets used and/or analyzed during the current study are available from the corresponding author on reasonable request.

Ethics approval and consent to participate

The clinical study was performed in accordance with the principles of the Declaration of Helsinki and was approved and supervised by the Ethics Committee of Hospital Universitario de la Princesa (PI-352). Written informed consent was obtained from each patient before they entered the study. All animal procedures were carried out at CBM-SO (Madrid, Spain) in accordance with the guidelines approved by the Animal Experimentation Ethics Committee of the Spanish National Research Council.

Consent for publication

Not applicable.

Competing interests

CCM declares that he is an employee of Immunological and Medical Products (IMMED S.L.), Madrid, Spain. FT declares that he is CEO and a shareholder in the same company. CMC is consultant of IMMED S.L. and has a granted patent for the use of therapeutic antibodies targeting CCR7 in cancer and has received research funds from IMMED.S.L. SM has received honoraria and research funding from BMS, Novartis and Pfizer (not related to this study). EF has received honoraria and research funding from Angelini, BMS, Novartis and Terumo BCT (not related to this study). The other authors declare that they have no potential competing interests.

Author details

¹Immunology Department, Hospital Universitario de La Princesa, IIS-IP, C/ Diego de León 62, 28006 Madrid, Spain. ²IMMED S.L., Immunological and Medicinal Products, Madrid, Spain. ³Immune System Development and Function Unit, Centro de Biología Molecular Severo Ochoa, CSIC-UAM, Madrid, Spain. ⁴Department I of Internal Medicine, Center for Integrated Oncology (CIO) Aachen-Bonn-Cologne-Duesseldorf (ABCD), Cologne Cluster of Excellence in Cellular Stress Response and Aging-Associated Diseases (CECAD), and Center of Molecular Medicine Cologne (CMMC), The University of Cologne, Cologne, Germany. ⁵Hematology Department, Hospital Universitario de La Princesa, IIS-IP, Madrid, Spain. ⁶Methodology Unit, Hospital Universitario de La Princesa, IIS-IP, Madrid, Spain. ⁷Department of Hematology, Hematology Research Unit Helsinki, Helsinki University Hospital

Comprehensive Cancer Center, Helsinki, Finland. ⁸Translational Immunology Research Program and Department of Clinical Chemistry, University of Helsinki, Helsinki, Finland. ⁹Department of Hemato-Oncology, Faculty Hospital Olomouc, Faculty of Medicine and Dentistry Palacky University, Olomouc, Czech Republic. ¹⁰Department of Cell Biology and Immunology, Centro de Biología Molecular Severo Ochoa, CSIC-UAM, Madrid, Spain. ¹¹Universidad Autónoma de Madrid, Madrid, Spain.

Received: 5 September 2020 Accepted: 12 October 2020

Published online: 24 October 2020

References

1. Dearden C. How I treat prolymphocytic leukemia. *Blood*. 2012;120(3):538–51.
2. Staber PB, Herling M, Bellido M, Jacobsen ED, Davids MS, Kadia TM, et al. Consensus criteria for diagnosis, staging, and treatment response assessment of T-cell prolymphocytic leukemia. *Blood*. 2019;134(14):1132–43.
3. Herling M, Khoury JD, Washington LT, Duvic M, Keating MJ, Jones D. A systematic approach to diagnosis of mature T-cell leukemias reveals heterogeneity among WHO categories. *Blood*. 2004;104(2):328–35.
4. Matutes E, Brito-Babapulle V, Swansbury J, Ellis J, Morilla R, Dearden C, et al. Clinical and laboratory features of 78 cases of T-prolymphocytic leukemia. *Blood*. 1991;78(12):3269–74.
5. Maljaei SH, Brito-Babapulle V, Hiorns LR, Catovsky D. Abnormalities of chromosomes 8, 11, 14, and X in T-prolymphocytic leukemia studied by fluorescence in situ hybridization. *Cancer Genet Cytogenet*. 1998;103(2):110–6.
6. Durig J, Bug S, Klein-Hitpass L, Boes T, Jons T, Martin-Subero JI, et al. Combined single nucleotide polymorphism-based genomic mapping and global gene expression profiling identifies novel chromosomal imbalances, mechanisms and candidate genes important in the pathogenesis of T-cell prolymphocytic leukemia with inv (14)(q11q32). *Leukemia*. 2007;21(10):2153–63.
7. Nowak D, Le Toriell E, Stern MH, Kawamata N, Akagi T, Dyer MJ, et al. Molecular allelotyping of T-cell prolymphocytic leukemia cells with high density single nucleotide polymorphism arrays identifies novel common genomic lesions and acquired uniparental disomy. *Haematologica*. 2009;94(4):518–27.
8. Dearden CE, Matutes E, Cazin B, Tjonnfjord GE, Parreira A, Nomdedeu B, et al. High remission rate in T-cell prolymphocytic leukemia with CAMPATH-1H. *Blood*. 2001;98(6):1721–6.
9. Pawson R, Dyer MJ, Barge R, Matutes E, Thornton PD, Emmett E, et al. Treatment of T-cell prolymphocytic leukemia with human CD52 antibody. *J Clin Oncol*. 1997;15(7):2667–72.
10. Hopfinger G, Busch R, Pflug N, Weit N, Westermann A, Fink AM, et al. Sequential chemoimmunotherapy of fludarabine, mitoxantrone, and cyclophosphamide induction followed by alemtuzumab consolidation is effective in T-cell prolymphocytic leukemia. *Cancer*. 2013;119(12):2258–67.
11. Dearden C. B- and T-cell prolymphocytic leukemia: antibody approaches. *Hematology Am Soc Hematol Educ Program*. 2012;2012:645–51.
12. Dearden CE, Khot A, Else M, Hamblin M, Grand E, Roy A, et al. Alemtuzumab therapy in T-cell prolymphocytic leukemia: comparing efficacy in a series treated intravenously and a study piloting the subcutaneous route. *Blood*. 2011;118(22):5799–802.
13. Keating MJ, Cazin B, Coutre S, Birhiray R, Kovacsics T, Langer W, et al. Campath-1H treatment of T-cell prolymphocytic leukemia in patients for whom at least one prior chemotherapy regimen has failed. *J Clin Oncol*. 2002;20(1):205–13.
14. Ravandi F, Aribi A, O'Brien S, Faderl S, Jones D, Ferrajoli A, et al. Phase II study of alemtuzumab in combination with pentostatin in patients with T-cell neoplasms. *J Clin Oncol*. 2009;27(32):5425–30.
15. Yong HX, Linn YC, Ong KH, Tan D. Chemoimmunotherapy with bendamustine hydrochloride and alemtuzumab demonstrates synergism in T-prolymphocytic leukemia. *Leuk Res*. 2012;36(8):e163–5.
16. Krishnan B, Else M, Tjonnfjord GE, Cazin B, Carney D, Carter J, et al. Stem cell transplantation after alemtuzumab in T-cell prolymphocytic leukaemia results in longer survival than after alemtuzumab alone: a multicentre retrospective study. *Br J Haematol*. 2010;149(6):907–10.
17. Herling M. Are we improving the outcome for patients with T-cell prolymphocytic leukemia by allogeneic stem cell transplantation? *Eur J Haematol*. 2015;94(3):191–2.
18. Wiktor-Jedrzejczak W, Dearden C, de Wreede L, van Biezen A, Brinck L, Leblond V, et al. Hematopoietic stem cell transplantation in T-prolymphocytic leukemia: a retrospective study from the European Group for Blood and Marrow Transplantation and the Royal Marsden Consortium. *Leukemia*. 2012;26(5):972–6.
19. Hasegawa H, Nomura T, Kohno M, Tateishi N, Suzuki Y, Maeda N, et al. Increased chemokine receptor CCR7/EB1 expression enhances the infiltration of lymphoid organs by adult T-cell leukemia cells. *Blood*. 2000;95(1):30–8.
20. Sokolowska-Wojdylo M, Wenzel J, Gaffal E, Lenz J, Speuser P, Erdmann S, et al. Circulating clonal CLA(+) and CD4(+) T cells in Sezary syndrome express the skin-homing chemokine receptors CCR4 and CCR10 as well as the lymph node-homing chemokine receptor CCR7. *Br J Dermatol*. 2005;152(2):258–64.
21. Buonamici S, Trimarchi T, Ruocco MG, Reavie L, Cathelin S, Mar BG, et al. CCR7 signalling as an essential regulator of CNS infiltration in T-cell leukaemia. *Nature*. 2009;459(7249):1000–4.
22. Alsadeq A, Fedders H, Vokuhl C, Belau NM, Zimmermann M, Wirbelauer T, et al. The role of ZAP70 kinase in acute lymphoblastic leukemia infiltration into the central nervous system. *Haematologica*. 2017;102(2):346–55.
23. Cuesta-Mateos C, Lopez-Giral S, Alfonso-Perez M, de Soria VG, Loscertales J, Guasch-Vidal S, et al. Analysis of migratory and prosurvival pathways induced by the homeostatic chemokines CCL19 and CCL21 in B-cell chronic lymphocytic leukemia. *Exp Hematol*. 2010;38(9):756–64 e1–4.
24. Redondo-Munoz J, Jose Terol M, Garcia-Marco JA, Garcia-Pardo A. Matrix metalloproteinase-9 is up-regulated by CCL21/CCR7 interaction via extracellular signal-regulated kinase-1/2 signaling and is involved in CCL21-driven B-cell chronic lymphocytic leukemia cell invasion and migration. *Blood*. 2008;111(1):383–6.
25. Alfonso-Perez M, Lopez-Giral S, Quintana NE, Loscertales J, Martin-Jimenez P, Munoz C. Anti-CCR7 monoclonal antibodies as a novel tool for the treatment of chronic lymphocyte leukemia. *J Leukoc Biol*. 2006;79(6):1157–65.
26. Cuesta-Mateos C, Loscertales J, Kreutzman A, Colom-Fernandez B, Portero-Sainz I, Perez-Villar JJ, et al. Preclinical activity of anti-CCR7 immunotherapy in patients with high-risk chronic lymphocytic leukemia. *Cancer Immunol Immunother*. 2015;64(6):665–76.
27. van Rijn RS, Simonetti ER, Hagenbeek A, Hogenes MC, de Weger RA, Canninga-van Dijk MR, et al. A new xenograft model for graft-versus-host disease by intravenous transfer of human peripheral blood mononuclear cells in RAG2^{-/-} gammad^{-/-} double-mutant mice. *Blood*. 2003;102(7):2522–31.
28. Garaulet G, Alfranca A, Torrente M, Escolano A, Lopez-Fontal R, Hortelano S, et al. IL10 released by a new inflammation-regulated lentiviral system efficiently attenuates zymosan-induced arthritis. *Mol Ther*. 2013;21(1):119–30.
29. Lopez-Giral S, Quintana NE, Cabrerizo M, Alfonso-Perez M, Sala-Valdes M, De Soria VG, et al. Chemokine receptors that mediate B cell homing to secondary lymphoid tissues are highly expressed in B cell chronic lymphocytic leukemia and non-Hodgkin lymphomas with widespread nodular dissemination. *J Leukoc Biol*. 2004;76(2):462–71.
30. Luther SA, Bidgol A, Hargreaves DC, Schmidt A, Xu Y, Paniyadi J, et al. Differing activities of homeostatic chemokines CCL19, CCL21, and CXCL12 in lymphocyte and dendritic cell recruitment and lymphoid neogenesis. *J Immunol*. 2002;169(1):424–33.
31. Legler DF, Uetz-von Allmen E, Hauser MA. CCR7: roles in cancer cell dissemination, migration and metastasis formation. *Int J Biochem Cell Biol*. 2014;54:78–82.
32. Bain BJ, Barnett D, Linch D, Matutes E, Reilly JT. Revised guideline on immunophenotyping in acute leukaemias and chronic lymphoproliferative disorders. *Clin Lab Haematol*. 2002;24(1):1–13.
33. del Pozo MA, Nieto M, Serrador JM, Sancho D, Vicente-Manzanares M, Martinez C, et al. The two poles of the lymphocyte: specialized cell compartments for migration and recruitment. *Cell Adhes Commun*. 1998;6(2–3):125–33.
34. Stein JV, Soriano SF, M'Rini C, Nombela-Arrieta C, de Buitrago GG, Rodriguez-Frade JM, et al. CCR7-mediated physiological lymphocyte homing involves activation of a tyrosine kinase pathway. *Blood*. 2003;101(1):38–44.
35. Ticchioni M, Essafi M, Jeandel PY, Davi F, Cassuto JP, Deckert M, et al. Homeostatic chemokines increase survival of B-chronic lymphocytic leukemia cells through inactivation of transcription factor FOXO3a. *Oncogene*. 2007;26(50):7081–91.
36. Ginaldi L, De Martinis M, Matutes E, Farahat N, Morilla R, Dyer MJ, et al. Levels of expression of CD52 in normal and leukemic B and T cells:

- correlation with in vivo therapeutic responses to Campath-1H. *Leuk Res.* 1998;22(2):185–91.
37. Smith SD, McFall P, Morgan R, Link M, Hecht F, Cleary M, et al. Long-term growth of malignant thymocytes in vitro. *Blood.* 1989;73(8):2182–7.
 38. Patil P, Cieslak A, Bernhart SH, Toprak UH, Wagener R, Lopez C, et al. Reconstruction of rearranged T-cell receptor loci by whole genome and transcriptome sequencing gives insights into the initial steps of T-cell prolymphocytic leukemia. *Genes Chromosom Cancer.* 2020;59(4):261–7. <https://doi.org/10.1002/gcc.22821>.
 39. Pekarsky Y, Koval A, Hallas C, Bichi R, Tresini M, Malstrom S, et al. Tc11 enhances Akt kinase activity and mediates its nuclear translocation. *Proc Natl Acad Sci U S A.* 2000;97(7):3028–33.
 40. Virgilio L, Narducci MG, Isobe M, Billips LG, Cooper MD, Croce CM, et al. Identification of the TCL1 gene involved in T-cell malignancies. *Proc Natl Acad Sci U S A.* 1994;91(26):12530–4.
 41. Chiaretti S, Gianfelici V, O'Brien SM, Mullighan CG. Advances in the genetics and therapy of acute lymphoblastic leukemia. *Am Soc Clin Oncol Educ Book.* 2016;35:e314–22.
 42. Bertilaccio MT, Scielzo C, Simonetti G, Ten Hacken E, Apollonio B, Ghia P, et al. Xenograft models of chronic lymphocytic leukemia: problems, pitfalls and future directions. *Leukemia.* 2013;27(3):534–40.
 43. Rehm A, Mensen A, Schradi K, Gerlach K, Wittstock S, Winter S, et al. Cooperative function of CCR7 and lymphotoxin in the formation of a lymphoma-permissive niche within murine secondary lymphoid organs. *Blood.* 2011;118(4):1020–33.
 44. Till KJ, Lin K, Zuzel M, Cawley JC. The chemokine receptor CCR7 and alpha4 integrin are important for migration of chronic lymphocytic leukemia cells into lymph nodes. *Blood.* 2002;99(8):2977–84.
 45. Saeki H, Moore AM, Brown MJ, Hwang ST. Cutting edge: secondary lymphoid-tissue chemokine (SLC) and CC chemokine receptor 7 (CCR7) participate in the emigration pathway of mature dendritic cells from the skin to regional lymph nodes. *J Immunol.* 1999;162(5):2472–5.
 46. Yang J, Wang S, Zhao G, Sun B. Effect of chemokine receptors CCR7 on disseminated behavior of human T cell lymphoma: clinical and experimental study. *J Exp Clin Cancer Res.* 2011;30:51.
 47. Link A, Vogt TK, Favre S, Britschgi MR, Acha-Orbea H, Hinz B, et al. Fibroblastic reticular cells in lymph nodes regulate the homeostasis of naive T cells. *Nat Immunol.* 2007;8(11):1255–65.
 48. Ma S, Shi Y, Pang Y, Dong F, Cheng H, Hao S, et al. Notch1-induced T cell leukemia can be potentiated by microenvironmental cues in the spleen. *J Hematol Oncol.* 2014;7:71.
 49. Despouy G, Joiner M, Le Toriellec E, Weil R, Stern MH. The TCL1 oncoprotein inhibits activation-induced cell death by impairing PKCtheta and ERK pathways. *Blood.* 2007;110(13):4406–16.
 50. Herling M, Patel KA, Teitell MA, Konopleva M, Ravandi F, Kobayashi R, et al. High TCL1 expression and intact T-cell receptor signaling define a hyperproliferative subset of T-cell prolymphocytic leukemia. *Blood.* 2008; 111(1):328–37.
 51. Dyer MJ, Kelsey SM, Mackay HJ, Emmett E, Thornton P, Hale G, et al. In vivo 'purging' of residual disease in CLL with Campath-1H. *Br J Haematol.* 1997; 97(3):669–72.
 52. Muller A, Homey B, Soto H, Ge N, Catron D, Buchanan ME, et al. Involvement of chemokine receptors in breast cancer metastasis. *Nature.* 2001;410(6824):50–6.
 53. Graham RL, Cooper B, Krause JR. T-cell prolymphocytic leukemia. *Proc (Baylor Univ Med Cent).* 2013;26(1):19–21.
 54. Birhiray RE, Shaw G, Guldán S, Rudolf D, Delmastro D, Santabarbara P, et al. Phenotypic transformation of CD52(pos) to CD52(neg) leukemic T cells as a mechanism for resistance to CAMPATH-1H. *Leukemia.* 2002; 16(5):861–4.
 55. Tuset E, Matutes E, Brito-Babapulle V, Morilla R, Catovsky D. Immunophenotype changes and loss of CD52 expression in two patients with relapsed T-cell prolymphocytic leukaemia. *Leuk Lymphoma.* 2001;42(6): 1379–83.
 56. Andersson EI, Putzer S, Yadav B, Dufva O, Khan S, He L, et al. Discovery of novel drug sensitivities in T-PLL by high-throughput ex vivo drug testing and mutation profiling. *Leukemia.* 2017;2017(14):252.
 57. Boidol B, Kornauth C, van der Kouwe E, Prutsch N, Kazianka L, Gultekin S, et al. First-in-human response of BCL-2 inhibitor venetoclax in T-cell prolymphocytic leukemia. *Blood.* 2017;130(23):2499–503.
 58. He L, Tang J, Andersson EI, Timonen S, Koschmieder S, Wennerberg K, et al. Patient-customized drug combination prediction and testing for T-cell Prolymphocytic leukemia patients. *Cancer Res.* 2018;2018(26): 0008–5472.
 59. Schrader A, Crispatzu G, Oberbeck S, Mayer P, Putzer S, von Jan J, et al. Actionable perturbations of damage responses by TCL1/ATM and epigenetic lesions form the basis of T-PLL. *Nat Commun.* 2018;9(1):697.
 60. Kallinich T, Muche JM, Qin S, Sterry W, Audring H, Kroczeck RA. Chemokine receptor expression on neoplastic and reactive T cells in the skin at different stages of mycosis fungoides. *J Invest Dermatol.* 2003;121(5): 1045–52.
 61. Kagdi HH, Demontis MA, Fields PA, Ramos JC, Bangham CR, Taylor GP. Risk stratification of adult T-cell leukemia/lymphoma using immunophenotyping. *Cancer Med.* 2017;6(1):298–309.

Publisher's Note

Springer Nature remains neutral with regard to jurisdictional claims in published maps and institutional affiliations.

Ready to submit your research? Choose BMC and benefit from:

- fast, convenient online submission
- thorough peer review by experienced researchers in your field
- rapid publication on acceptance
- support for research data, including large and complex data types
- gold Open Access which fosters wider collaboration and increased citations
- maximum visibility for your research: over 100M website views per year

At BMC, research is always in progress.

Learn more biomedcentral.com/submissions

