


CORRECTION

Open Access



# Correction: Trends in clinical characteristics and outcomes of all critically ill COVID-19 adult patients hospitalized in France between March 2020 and June 2021: a national database study

Diane Naouri<sup>1\*</sup> , Albert Vuagnat<sup>1</sup>, Gaëtan Beduneau<sup>2</sup>, Martin Dres<sup>3</sup>, Tai Pham<sup>4</sup>, Alain Mercat<sup>5</sup>, Alain Combes<sup>6</sup>, Alexandre Demoule<sup>3</sup>, Antoine Kimmoun<sup>7</sup>, Matthieu Schmidt<sup>6</sup> and Matthieu Jamme<sup>8,9</sup>

**Correction: *Annals of Intensive Care* (2023) 13:2**  
<https://doi.org/10.1186/s13613-022-01097-3>

In the original publication [1] of the article, the Fig. 2 was incorrectly published where the line from Fig. 2B have been moved to Fig. 2A by mistake. The corrected Fig. 2

is given in this Correction article. The original article has been corrected.

Published online: 19 March 2023

The original article can be found online at <https://doi.org/10.1186/s13613-022-01097-3>.

\*Correspondence:

Diane Naouri  
[diane.naouri@sante.gouv.fr](mailto:diane.naouri@sante.gouv.fr)

<sup>1</sup> Department for Research, Studies, Assessment and Statistics (DREES), French Ministry of Health, 10 Place Des 5 Martyrs du Lycée Bufon, 75014 Paris, France

<sup>2</sup> UNIROUEN, EA 3830, Medical Intensive Care Unit, Rouen University Hospital, Normandie University, 76000 Rouen, France

<sup>3</sup> Service de Pneumologie et Réanimation Médicale, Hôpital Pitié Salpêtrière, Assistance Publique Hôpitaux de Paris, Paris, France

<sup>4</sup> Service de Médecine Intensive-Réanimation, Hôpital du Kremlin Bicêtre, Assistance Publique Hôpitaux de Paris, Le Kremlin Bicêtre, France

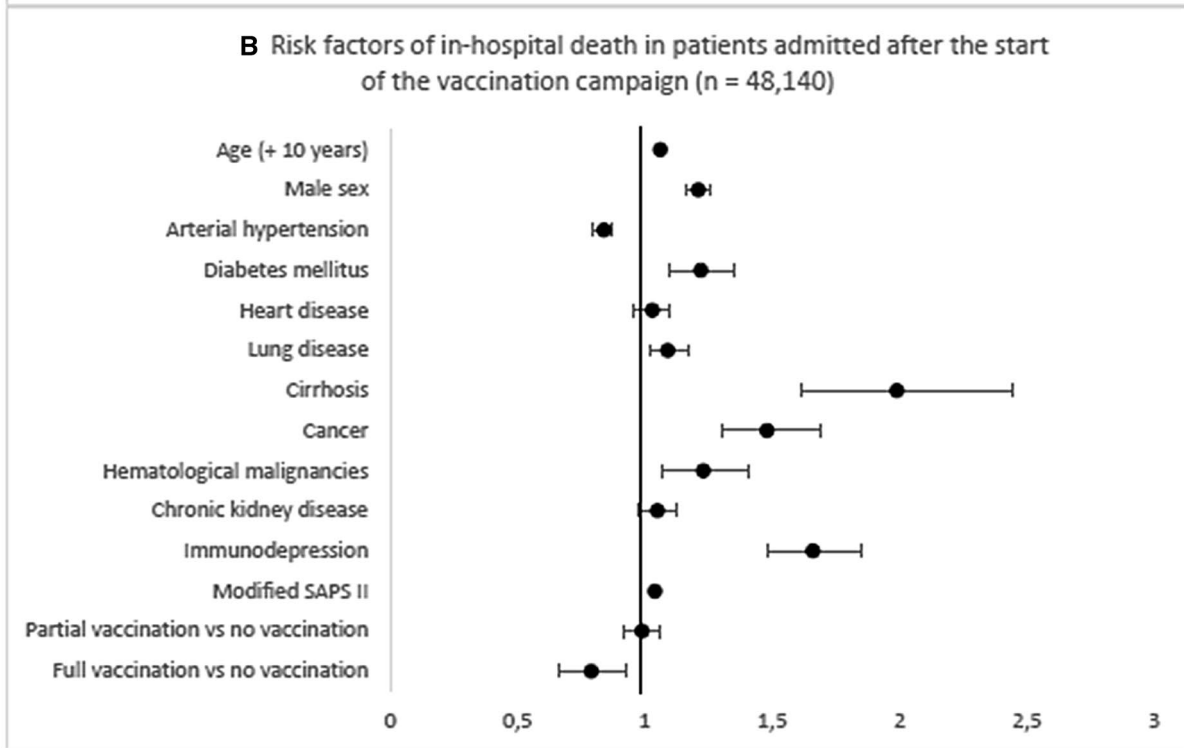
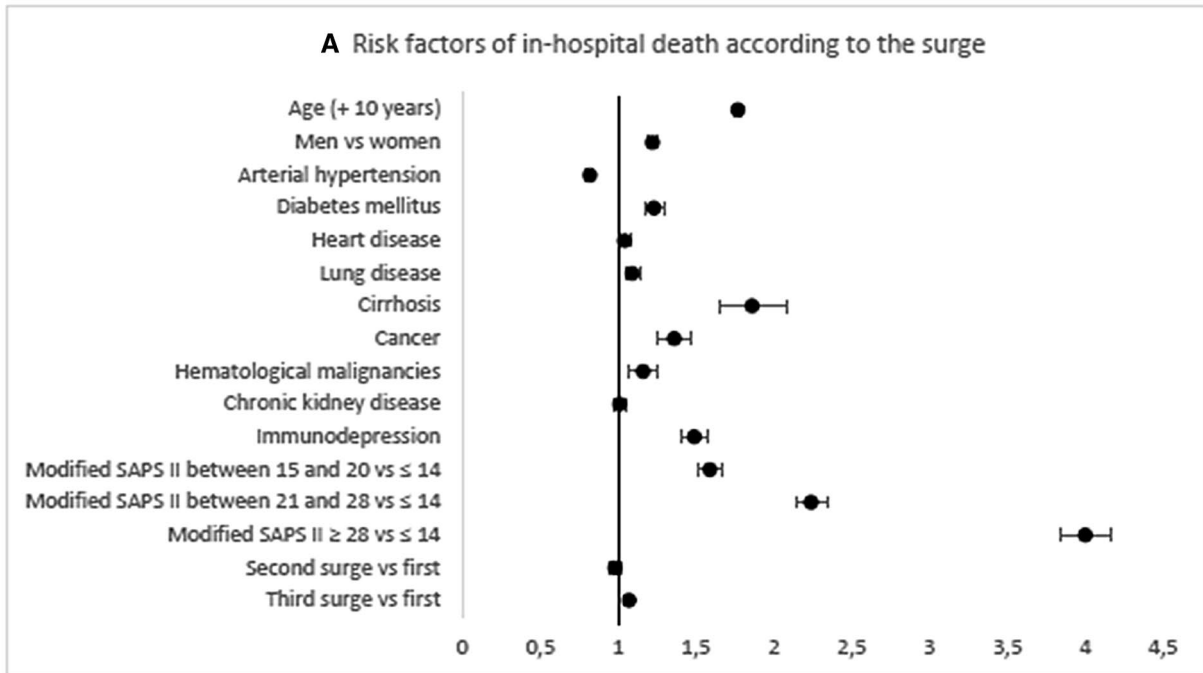
<sup>5</sup> Service de Réanimation Médicale et Médecine Hyperbare, CHU Angers, Angers, France

<sup>6</sup> Sorbonne Université, GRC 30, RESPIRE, UMRS\_1166-ICAN, Institute of Cardiometabolism and Nutrition, Service de Médecine Intensive-Réanimation, Assistance Publique-Hôpitaux de Paris (APHP) Hôpital Pitié-Salpêtrière, Paris, France

<sup>7</sup> Service de Médecine Intensive-Réanimation, CHRU Nancy, Nancy, France

<sup>8</sup> Service de Réanimation Polyvalente, Hôpital Privé de l'Ouest Parisien, Ramsay-Générale de Santé, Trappes, France

<sup>9</sup> CESP, INSERM U1018, Equipe Epidémiologie Clinique, Villejuif, France



● The round represents the strength of the association between the risk factor and in-hospital death in the Fine and Gray model (sub-hazard ratio)

— The black line represents the confidence intervals of the sub hazard ratio

**Fig. 2** Risk factors of in-hospital death

#### Reference

1. Naouri D, Vuagnat A, Beduneau G, Dres M, Pham T, Mercat A, Combes A, Demoule A, Kimmoun A, Schmidt M, Jamme M. Trends in clinical characteristics and outcomes of all critically ill COVID-19 adult patients hospitalized in France between March 2020 and June 2021: a national database study. *Ann Intensive Care*. 2023;13:2. <https://doi.org/10.1186/s13613-022-01097-3>.

#### Publisher's Note

Springer Nature remains neutral with regard to jurisdictional claims in published maps and institutional affiliations.