

RESEARCH

Open Access



# Tissue engineering of mouse uterus using menstrual blood stem cells (MenSCs) and decellularized uterine scaffold

Nouri Arezoo, Hajian Mohammad and Monsefi Malihezaman\*

## Abstract

**Background:** Uterine tissue engineering can provide the opportunity for curing female infertility. Natural scaffold is a good choice to recapitulate the architecture and functionality of the native tissue. In this study, we purposed the potential of uterine decellularized scaffolds as an adequate natural niche for MenSCs differentiation toward uterus-specific cell lineages.

**Methods:** Mouse's uterus was decellularized by immersion of hypo and hypertonic salts or freeze–thaw cycle followed by immersion in Triton X-100 and SDS solutions. MenSCs were isolated from the menstrual blood of 6 healthy women. The decellularized and recellularized samples were prepared for further in vitro and in vivo analyses.

**Results:** Histochemical studies and Raman spectroscopy revealed uterine ECM was preserved well, and the cells were completely removed after decellularization. Scanning electron microscopy (SEM) showed that the 3D ultrastructure of the uterus remained intact. Flowcytometric examination with CD34, CD44, CD105, CD106, CD144 markers revealed stem cell characters of cells that isolated from menstrual blood. MTT assay confirmed the bioavailability of MenSCs cultured scaffolds after 7 and 10 days.

**Conclusion:** Histochemical studies, SEM images, and Raman spectra showed MenSCs seeded and growth in uterine scaffolds. Immunostaining using anti-cytokeratin (CK), anti-desmin (Des), anti-vimentin (Vim), and anti-smooth muscle actin (SMA) antibodies showed MenSCs differentiation to epithelial and smooth muscle tissues. The Raman spectroscopy revealed the extracellular matrix (ECM) of decellularized uterine scaffolds was well preserved. The decellularized uterus can be considered a promising vehicle to support cell transplantation and differentiation. MenSCs are a good choice for uterine tissue engineering. The complete decellularization from mice uterine tissue was done by combining chemical agents

**Keywords:** Decellularization, Menstrual blood stem cells, Recellularization, Uterine scaffold

## Background

Many diseases cause damage to tissues or organs and destroyed their functions. Also, a total of 122,682 fatal traffic injury cases were registered during 2011–2017. The annual mortality rates for road traffic fatalities were 21.9 and 5 per 100,000 people [1]. Transplantation is the

only mode of therapy to replace organ failure affecting such as kidneys, liver, heart, lungs, and pancreas. High cost, low number of qualified donors, the risk of rejection, and side effects of immunosuppressive drugs are organ transplantation problems. Approximately 50% of all transplanted organs are rejected within 10–12 years. This rate is varied for different organs and the old of recipients. So, there is a great need for better ways to reduce or eliminate organ rejection.

\*Correspondence: monsefi@susc.ac.ir; monsefi.g@gmail.com  
Cellular-Developmental Biology Lab, Biology Department, College of Sciences, Shiraz University, Adabiata St., 71456-85464 Shiraz, Fars, Iran



© The Author(s) 2021. **Open Access** This article is licensed under a Creative Commons Attribution 4.0 International License, which permits use, sharing, adaptation, distribution and reproduction in any medium or format, as long as you give appropriate credit to the original author(s) and the source, provide a link to the Creative Commons licence, and indicate if changes were made. The images or other third party material in this article are included in the article's Creative Commons licence, unless indicated otherwise in a credit line to the material. If material is not included in the article's Creative Commons licence and your intended use is not permitted by statutory regulation or exceeds the permitted use, you will need to obtain permission directly from the copyright holder. To view a copy of this licence, visit <http://creativecommons.org/licenses/by/4.0/>. The Creative Commons Public Domain Dedication waiver (<http://creativecommons.org/publicdomain/zero/1.0/>) applies to the data made available in this article, unless otherwise stated in a credit line to the data.

Tissue engineering is an important field of regenerative medicine for tissue repair. In this method the use of stem cells such as mesenchymal stem cells (MSCs) deriving from a different source of body and scaffold improve or replace damaged tissues. Scaffolds used in tissue engineering are divided into two groups of natural and synthetic scaffolds. Natural scaffolds can provide an adequate environment similar to that of the extracellular subunit material for the cells, and due to the proper immunological response, angiogenicity, the ability to improve cell adhesion and homeostasis are very important [2].

A rich source of stem cells will be obtained from menstrual blood (Menstrual Blood Stem Cells: MenSCs). During the past decade the abundance, easy access, periodically and non-invasively collection, the ability to regularly donated, and autologous transplantation are the reasons that these cells are the ideal source for tissue engineering. So far, many cases of extraction and differentiation of MenSCs have been reported in various cell types. MenSCs have shown positive therapeutic potential for the treatment of various diseases. The ability to differentiate cells extracted from menstrual blood into skeletal muscle cells for the treatment of Duchenne muscular dystrophy has been reported in a mouse model [3]. MenSCs promote both regenerations of myocardial damage and the improvement of cardiac function [4]. Treatment for injuries caused by stroke was shown by the effective differentiation of MenSCs to functional neural cells [5]. MenSCs were differentiated into liver cells [6]. Menstrual-derived stem cells are differentiated into cartilage and replaced with nano-fibrous scaffolds [7]. To differentiate stem cells from menstrual blood to epidermal cells, a culture method of keratinocytes isolated from the foreskin of neonates of 2–10 months old boys was used. These cells were introduced as a usable and non-invasive source for differentiation into epidermal cells in the treatment of skin lesions [8].

The uterus is responsible for the main task of pregnancy and fetal development. Hysterectomy is caused by some diseases or injuries. In the present study, we attempted to construct a uterus using a natural remodeled scaffold of the mouse decellularized uterus and MenSCs.

## Materials and methods

### Animals

A total of eight mature female Balb/c mice weighing between 32 and 38 g were obtained from the Animal House of Shiraz University of Medical Sciences, Shiraz, Iran. The mice were adapted to the laboratory conditions for two weeks before the experiments. Animals were kept at a controlled temperature (22–25 °C) and under a 12 h light–dark cycle (lights on from 6:00 until 18:00)

with free access to food and tap water. The animal experiments were approved by the Institutional Animal Ethics and Health Committee of the Biology Department of Shiraz University (IR.SUSC.1397.S9431201) and were performed according to the principles of the care and use of laboratory animals established by the National Institute of Health.

### Preparation of decellularized scaffolds

Uterine tubes were removed and divided into 1 cm pieces. Decellularization was performed using three methods: (1) The samples were immersed into (SDS) Sodium Dodecyl Sulfate (Merck, Germany) and triton X-100 solutions (Merck, Germany) at concentrations of 0.1, 0.3, 0.6%, each for 24 h. (2) the samples were stored at 0 °C (freezing) for one week and then melted by transferring to room temperature (37 °C). The specimens were subsequently immersed into the 0.5% SDS and Triton X-100 0.1% each for 48 h. (3) The samples were immersed in NaCl solutions at concentrations of 1.5, 3 and 5 mol each for 24 h, and then immersed into SDS and triton-X100 similar to the second method.

### Collection of menstrual blood

The MenSCs were isolated from 6 healthy volunteers of fertile women aged between 20 and 40 years. The blood donation was approved by Ethics and Health Committee of the Biology Department of Shiraz University (IR.SUSC.1398.S943120-CONSENT FORM). The experimental procedures for menstrual blood samples and MenSC were carried out in accordance with the approved guidelines. We received informed consents from all of the donors, and all the donors provided consent for the use of their menstrual blood samples in scientific research. About 4 ml of menstrual blood (MB) was collected using two methods: (1) using Diva Cups (European Lady Cup) that were inserted into the vagina for a mean of 3 h (2–4 h) on the second day of the menstrual cycle (2) using sterile collection containers. MB was transferred into falcon tube containing 4 ml PBS/EDTA 0.5 mM, 40 µl Penicillin–Streptomycin (Shell max, Iran), and 8 µl Amphotericin B (Gibco, USA) 250 µg/ml.

### Isolation and culture of MenSCs

Mononuclear cells were separated using ficoll (Inno-train, Germany) density gradient centrifugation and washed out in PBS. Then, the cell pellet in the tube was suspended in DMEM-F12 (Bio-IDEA, Iran) medium supplemented with 10% FBS and cultured in tissue culture plates. The cells were kept in 37 °C incubator with 5% CO<sub>2</sub>. After removal of non-adherent cells on the second day of incubation, the culture of adherent cells continued until 70% confluency.

In direct culture, 5 ml MB were cultured in 25 ml flask with 10 ml DMEM-F12 containing 10% FBS, 1% Pen/Strep, and 0.1% Amphotericin B in 37 °C incubator with 5% CO<sub>2</sub> for 5 days. The red blood cells were washed and the culture of adherent cells was continued until up to 70% confluency. The stem cells were passaged 4–6 times.

#### Flowcytometry

The harvested cells were fixed with paraformaldehyde. The cells were washed and the non-specific binding sites were blocked by PBS containing goat serum. The monoclonal FITC conjugated anti CD144, CD34, CD44, CD106, and CD 105 antibodies (Sigma, USA) were added and incubated at 4 °C for an hour. The cells were centrifuged in cold PBS at 2100 rpm for 5 min. The supernatant was removed and the cells were measured in the FL1 channel of flowcytometer (BD Company, USA). The percentages of the cells that reacted to CD markers were analyzed by histogram using the WINmdi 2.9 software.

#### Recellularized scaffolds

The decellularized scaffolds were divided into 5 mm pieces. They were cut longitudinally by insulin needles and sterile pins. Samples were sterilized with 0.1% peracetic acid (Merck, Germany) for 10 min then washed with sterile PBS (Shell max, Iran) and exposed to UV radiation for 20 min under the laminar hood. The total number of  $2 \times 10^4$  MenSCs were added to each scaffold and incubated in a 96-well culture plate at 37 °C and 5% CO<sub>2</sub>. After 30–40 min, 200 µl DMEM/F12 containing FBS 10% and pen/strep 0.1% was added and cultured for 2 weeks. The media were changed every 24 h. The co-culture of scaffolds and MenSCs were checked daily. The photographs were taken by a digital camera (Nikon, Japan).

#### Histological studies

Decellularized scaffolds were fixed in a 10% buffered formalin solution for 1 week then paraffin blocks were prepared [9] and 5 µm thick sections stained with hematoxylin–eosin (H&E) and Masson's trichrome staining. The histological changes of scaffolds such as cell removal, normal arrangement and structure of collagen fibers were evaluated microscopically.

Recellularized scaffolds were fixed in 10% buffered formalin in a 96-well culture plate for 2 h. Scaffolds were prepared histologically and 4 µm thick sections stained with hematoxylin–eosin and hoechst (American Sigma) staining. Photomicrographs were prepared by a digital camera (Nikon, Japan).

#### MTT assay

To evaluate the MenSCs bio-viability and growth in the scaffolds after 7 and 10 days MTT colorimetric assay was applied. Briefly, the MTT solution was prepared at 1 mg/ml in PBS and was filtered through a 0.2 µm filter. Then scaffolds were washed with PBS and MTT solution at 1:10 of total volume was added to each scaffold in 96-well culture plate. Tissues were incubated for 4 h at 37 °C with 5% CO<sub>2</sub> and complete humidity. After 4 h, the MTT solution was removed and replaced with 200 µl of DMSO. The plate was further incubated for 2 h at room temperature, and the optical density (OD) of the wells was determined using an Eliza reader (Bmg Labtech, Germany) at a test wavelength of 570 and 630 nm. Percent of the cell viability was calculated using the equation: (mean OD of treated cells/mean OD of control cells) × 100.

#### Scanning electron microscopy

To evaluate the microarchitecture of the decellularized scaffolds and nesting cells after recellularization, scanning electron microscopy (SEM) was performed. The supernatant of each recellularized scaffold was removed and washed with PBS 2–3 times. Samples were fixed with glutaraldehyde 4% (Merck, Germany) for 1.5 h and washed 2–3 times with PBS. The specimens were dried with a freeze dryer (LD Plus Alpha 2–4, Christ, Germany) and were covered with gold using Sputter Coater (Q150R-ES: Quorum Technologies, England). The photomicrographs were imaged by TESCAN-Vega 3 microscope (TESCAN, Czech Republic). To analyze the structural or chemical properties of the sample, an Energy Dispersive X-Ray Spectrometer (EDS) spectrometer was used.

#### Immunohistochemical (IHC) studies

To evaluate the differentiation of MenSCs, the recellularized scaffolds were fixed in 4% paraformaldehyde for 24 h followed by immersing in 30% sucrose as a cryoprotectant for 72 h; at the end, they were transported to the liquid nitrogen. The tissues were then embedded in paraffin and sectioned at a thickness of 5 µm. Endogenous peroxidase was neutralized by 0.3% H<sub>2</sub>O<sub>2</sub> in methanol, and non-specific binding sites were blocked by 4% goat serum in PBS. The samples were incubated with anti-cytokeratin (AE1/AE3), anti-desmin (D33), anti-vimentin (SP20), and anti-smooth muscle actin (1A4) antibodies all from Biocare Medical Company and using Detection kit (Master Diagnostic) overnight at 4 °C. Then, they were washed with PBS three times for 15 min. Finally, the samples were treated with streptavidin–horseradish peroxidase

complex followed by incubation with diaminobenzidine (DAB, Dako) and counterstained with hematoxylin.

### **Confocal Raman spectroscopy**

To detect the extracellular matrix preservation of decellularized scaffolds, samples were placed on a 1 mm thick quartz window. Raman spectral mapping was recorded for tissue areas of  $4 \times 4$  mm. Raman spectra were collected using an inverted optical microscope (Lab Ram HR, Horiba, Japan) equipped with a  $50\times/0.50$  NA objective. A 785 nm excitation laser, with the power of 100 mW at the sample, was used for excitation. Raman maps were measured by raster-scanning the movable stage (Duo Scan) is equipped to allow spectral imaging. The integration time at each pixel was 1 s. Auto-fluorescence images of the tissue samples were recorded for the same areas using SWIFT Fast confocal imaging integrated into the Raman microscope. The excitation was based on a laser at 532 nm (10 mW), and detection in the range of 532–600 nm.

Spectra were recorded in the range of  $400\text{--}1800\text{ cm}^{-1}$ .

### **Statistical analysis**

Statistical analysis of the data was confirmed with SPSS software and normal data with Kolmogorov–Smirnov test confirmed with high confidence. Then, One-way ANOVA was performed at  $p < 0.05$ . The Tukey post hoc test was used to obtain the mean and standard deviation for each parameter. The graphs were plotted using EXCEL software.

## **Results**

The gross examination of the decellularized uterus with all methods revealed a whitish translucent appearance and confirmed decellularization efficacy (Fig. 1a, b). The usage of different concentrations of SDS and Triton X-100 solutions revealed cell removal along with the intact ECM architecture after H&E (Fig. 1d, e) and Masson's trichrome staining (Fig. 1f). The vasculature framework without endothelial cells and ECM around the endometrial gland were preserved in the decellularized samples. There were some remnant nuclei in the endometrium of the decellularized uterus after two other methods of hypertonic and hypotonic solutions and freeze and thaw. Therefore, natural scaffold preparation using SDS and Triton X-100 was selected for MenSCs recellularization.

Hoechst staining confirmed the uterine decellularization except for the presence of a very few nuclei residues in some areas of the microscopic field (Fig. 1c). The SEM photomicrograph confirmed the intact uterine three-dimensional ECM architecture without any cell or nucleus component (Fig. 1g, h).

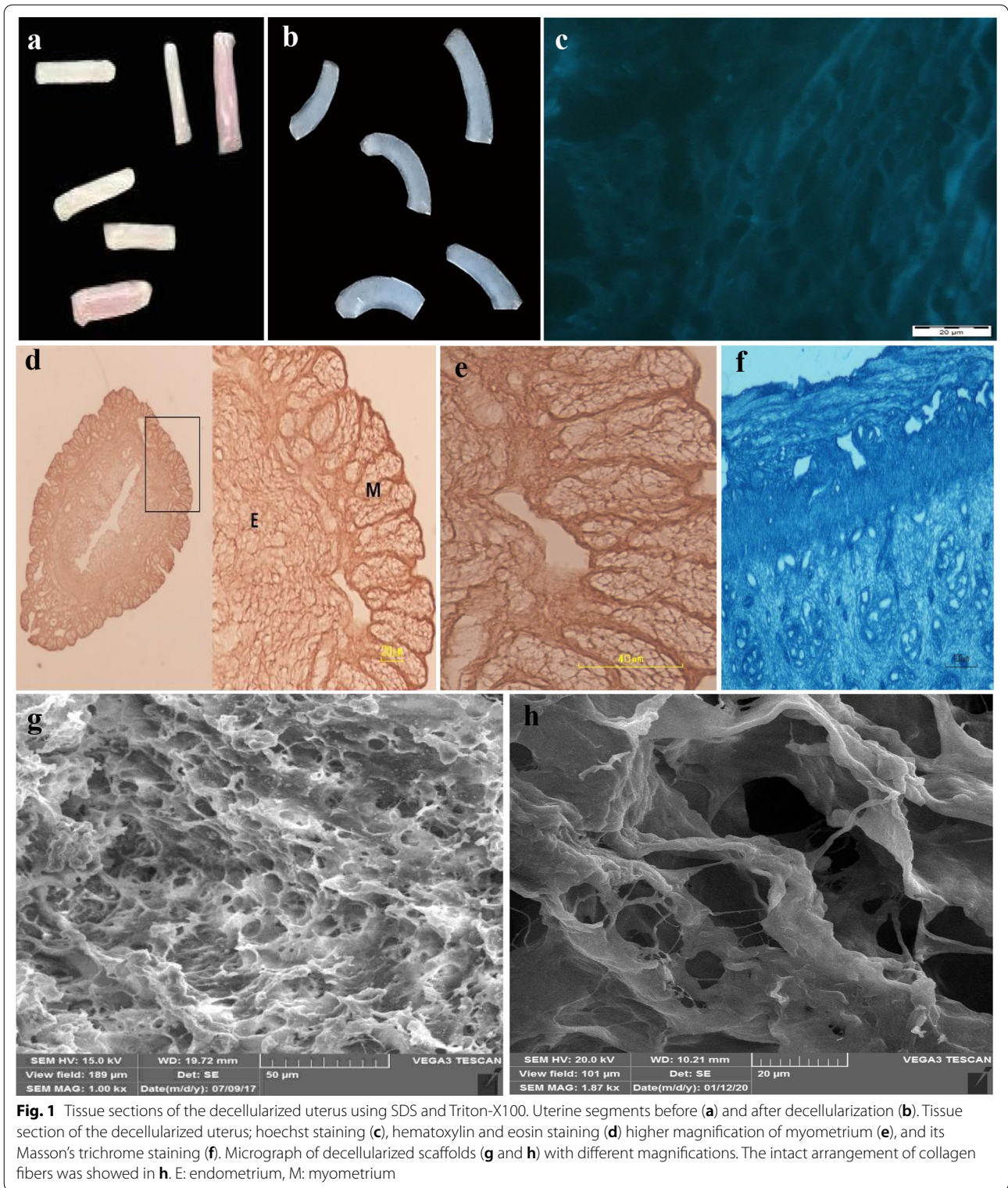
The isolated MenSCs were adherent to the culture plates after 24 h. The proliferation rate of MenSCs in the direct culture method was faster than the ficoll usage method. By reaching 80% confluency after 3 days, the cells exhibited spindle-shaped morphology like fibroblasts (Fig. 2a, b). Flowcytometric analysis revealed the expression of mesenchymal markers such as CD44, CD 106, and CD 105 (Fig. 2d–f). Further analysis showed the lack of hematopoietic stem cells (CD34) and endothelial cells (CD144) markers (Fig. 2g, h). The immunophenotypic analysis showed that MenSCs were positive for CD44 (92.3%), CD 106 (34.5%) and CD 105 (46.6%) and negative for CD144 (5.52%) and CD34 (7.03%).

In vitro study showed MenSCs migrated and entered the decellularized scaffold. The highest MenSCs migration into the decellularized scaffold was after 72 h. After one week, MenSCs penetrated the scaffold completely and there were a few numbers of adherent cells in the monolayer culture plate (Fig. 2c).

MTT assay revealed that the decellularized scaffold was non-toxic and MenSCs were seeded into the decellularized framework of each three layers of the uterus. The cell viability was compared with that in monolayer culture after 7 and 10 days. As time passed, proliferation and viability significantly increased. The MenSCs viability was significantly lower in the cells seeded on the scaffold after 7 days compared to those seeded in 10 days (Fig. 2i).

A microscopic study revealed the MenSCs in the recellularized scaffolds were distributed with different phenotypes in all layers of the uterus. The cells located in the myometrium had spherical with round or oval nuclei (Fig. 3a). The cells scattered within the glandular framework of the endometrium were fibroblast-like structures with oval pale nuclei. Therefore, it seems that the ECM architecture and content regulated the cell morphology. The attached cells to the surface of the perimetrium were squamous in shape (Fig. 3b–d). Hoechst staining also showed the presence of MenSCs nuclei as bright blue nuclei in the recellularized scaffold is due to specific binding of the dye in a small groove between the two strands of DNA (Fig. 3a). SEM photomicrographs confirmed the migration of different cell phenotypes according to the location within the scaffolds (Fig. 4a–d).

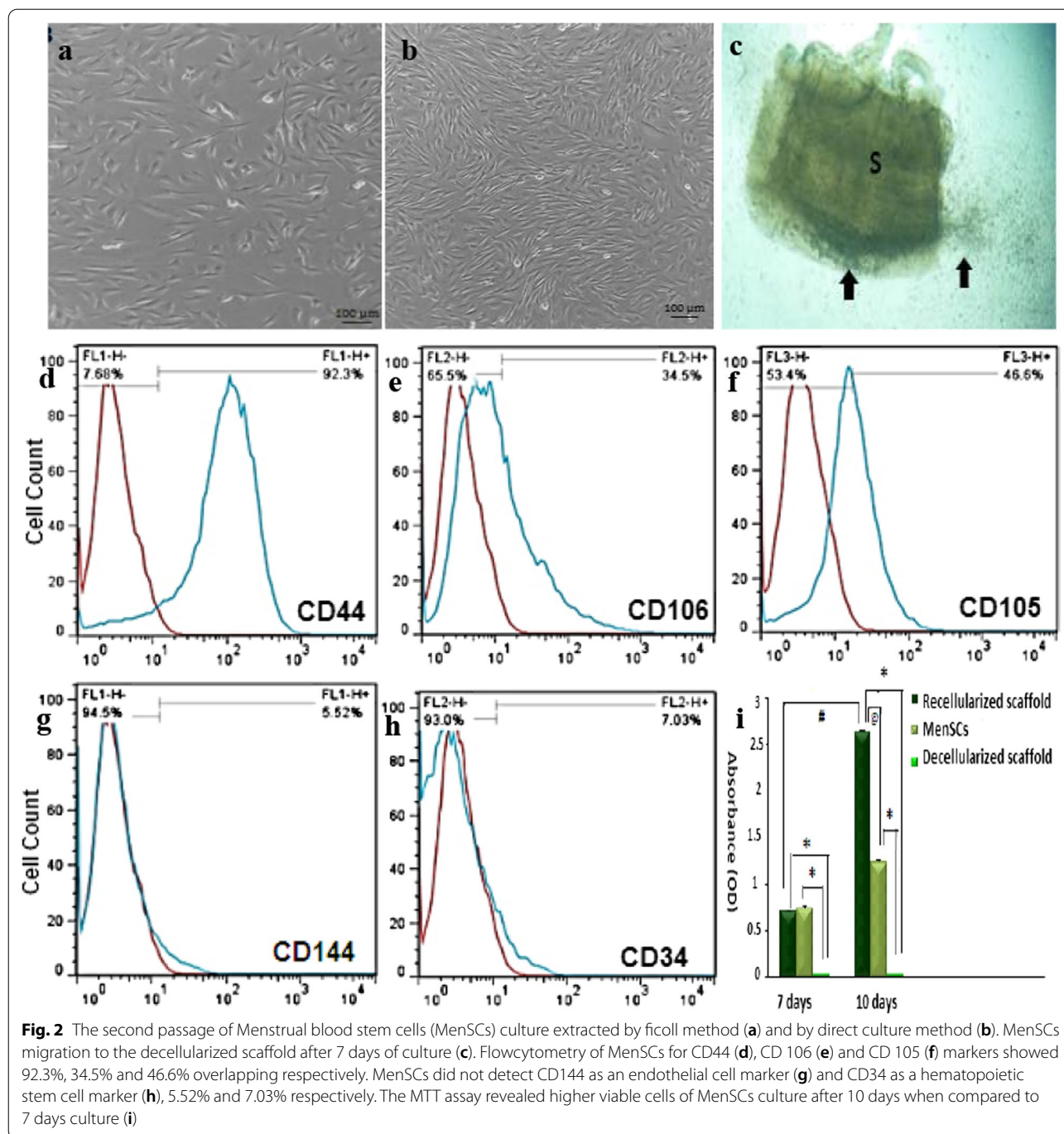
Immunostaining showed that seeded cells within the endometrium, myometrium, and perimetrium of the decellularized uterine scaffolds have the potential for differentiation to different cell types. Anti-cytokeratin (CK) antibody stain the acidic and basic (Type I and II) sub-families of cytokeratins in human epithelia, anti-smooth muscle actin (SMA) show the presence of smooth muscle cells in vessel walls and myometrium and anti-desmin and anti-vimentin antibodies detect intermediate filament of smooth muscle. Therefore, the positive reactions



with these antibodies revealed the differentiation of MenSCs to the epithelium and smooth muscle (Fig. 5a–d).

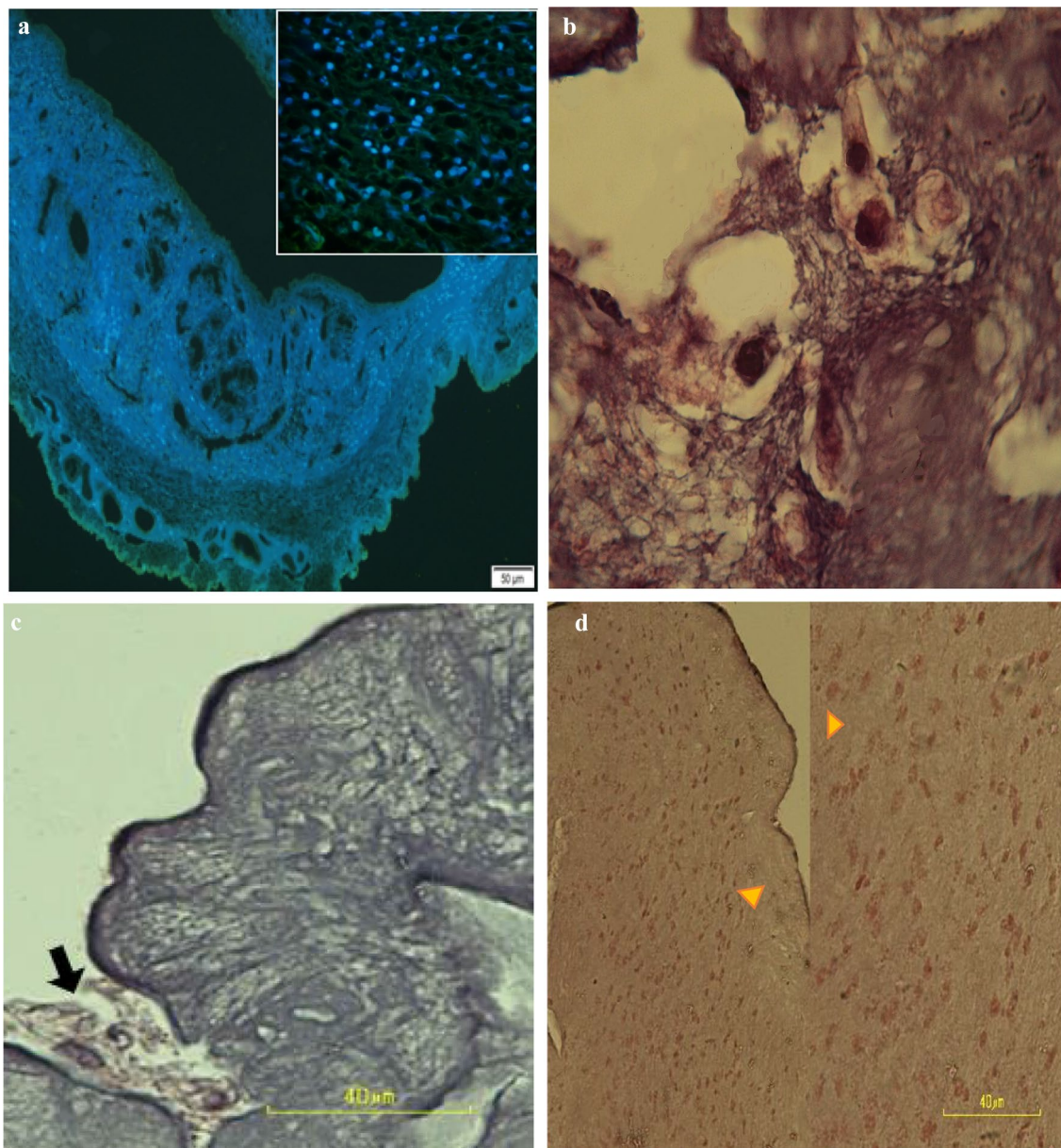
The Raman spectra in normal uterine scaffolds showed a pattern of intense bands for collagen type I or its

components at 1660–1680  $\text{cm}^{-1}$ . There are some small bands for collagen components such as tyrosine and phenylalanine or other amides at 1302, 1278, 1265, 1239, 1002 and 859  $\text{cm}^{-1}$ . The spectra of nucleic acid contents



including guanine and thymine DNA bases, ribose of RNA mode, and DNA showed intense bands at 666, 1315, 915 and 1094  $\text{cm}^{-1}$  respectively. Polysaccharides' skeletal mode showed a band at 942  $\text{cm}^{-1}$  [10]. The lipid components showed an intense band at 1449 and 1302  $\text{cm}^{-1}$  (Fig. 6a). The Raman spectra in decellularized uterine scaffold showed a sharp peak at 1661  $\text{cm}^{-1}$  for collagen components. There is an intense band at 1453  $\text{cm}^{-1}$  that

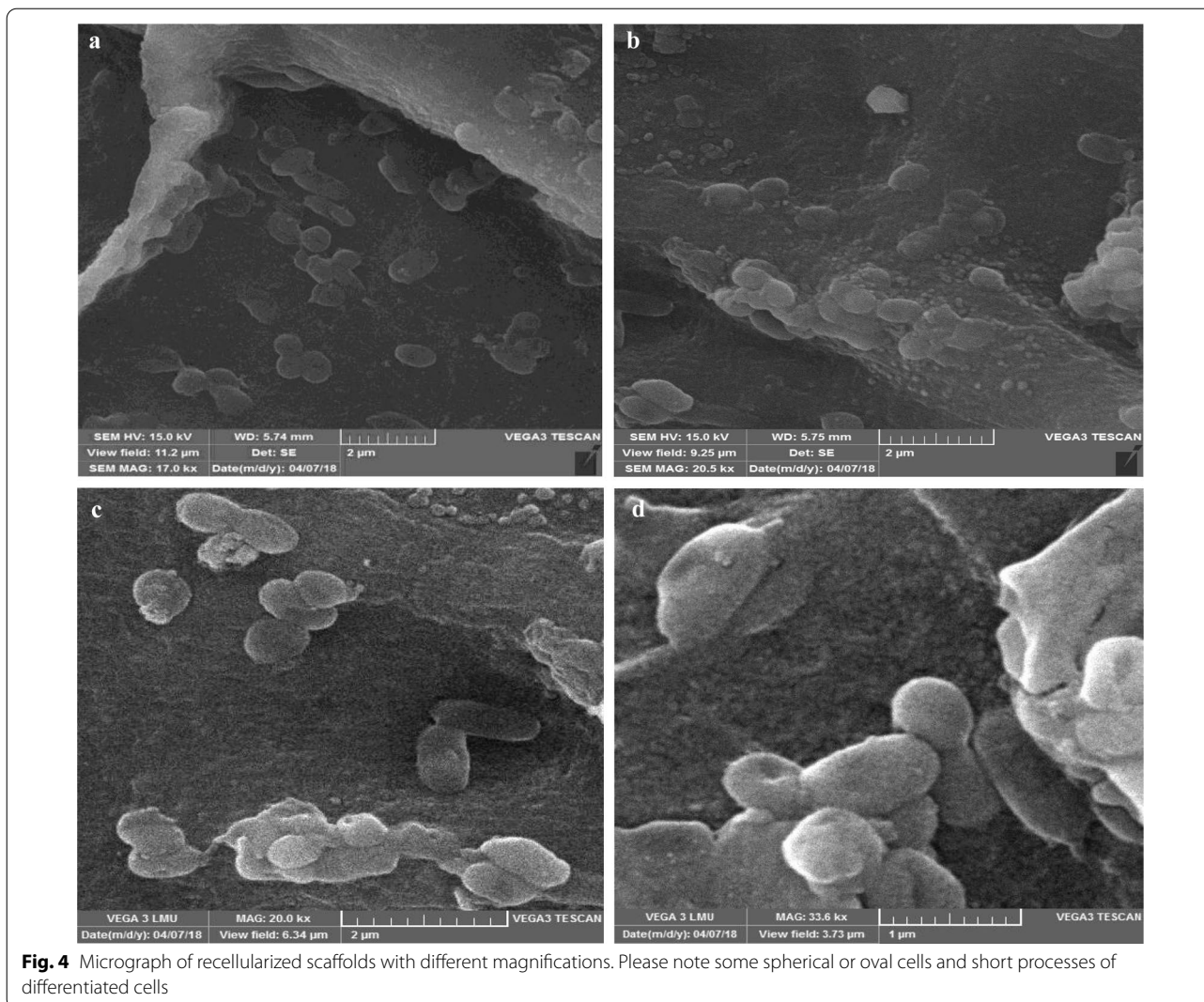
corresponding to  $\text{CH}_2/\text{CH}_3$  groups is associated with elastin and collagen. The amide III showed a band at 1247  $\text{cm}^{-1}$  assigned to collagen. Three bands at 937, 856 and 817  $\text{cm}^{-1}$  assigned to proline and hydroxyproline of collagen type I. There is no band to approve DNA residue in the decellularized uterine scaffold (Fig. 6b). The Raman spectra in the recellularization uterine scaffold showed intense bands for amide III at 1678 and 1665  $\text{cm}^{-1}$ .



**Fig. 3** Tissue sections of recellularized scaffolds (a) after Hoechst staining. The light blue spots showed the live cell nuclei. Tissue sections of the recellularized scaffold after 7 days (b, c) and 10 days (d) of MenSCs culture. Please note the cell migration between collagen fibers of the uterine scaffold in higher magnification (arrowheads). Hematoxylin and eosin staining

There is a sharp band for cholesterol saw at  $1444\text{ cm}^{-1}$ . The spectra showed some recorded bands between  $1120$  and  $1200\text{ cm}^{-1}$  and at  $1311\text{ cm}^{-1}$  that revealed DNA, RNA, phosphate groups, and phosphatidylinositol and guanine. Also, two bands at  $576$  and  $799\text{ cm}^{-1}$  referred to phosphatidylinositol and phosphate groups respectively (Fig. 6c). The comparison between Raman spectra of normal and decellularized uterine scaffolds confirmed the chemical similarity of the two samples. It showed a

similar band pattern of collagen type I including intense bands at  $1660\text{ cm}^{-1}$  and the other bands that assigned proline and hydroxyproline and phenylalanine or corresponding to amide I and III [10]. The analysis of decellularized uterine scaffolds confirmed the lack of Raman bands typical of cellular material (Fig. 6d). There are Raman bands typical of cellular material in recellularized uterine scaffolds compared to the decellularized uterine scaffolds (Fig. 6e).



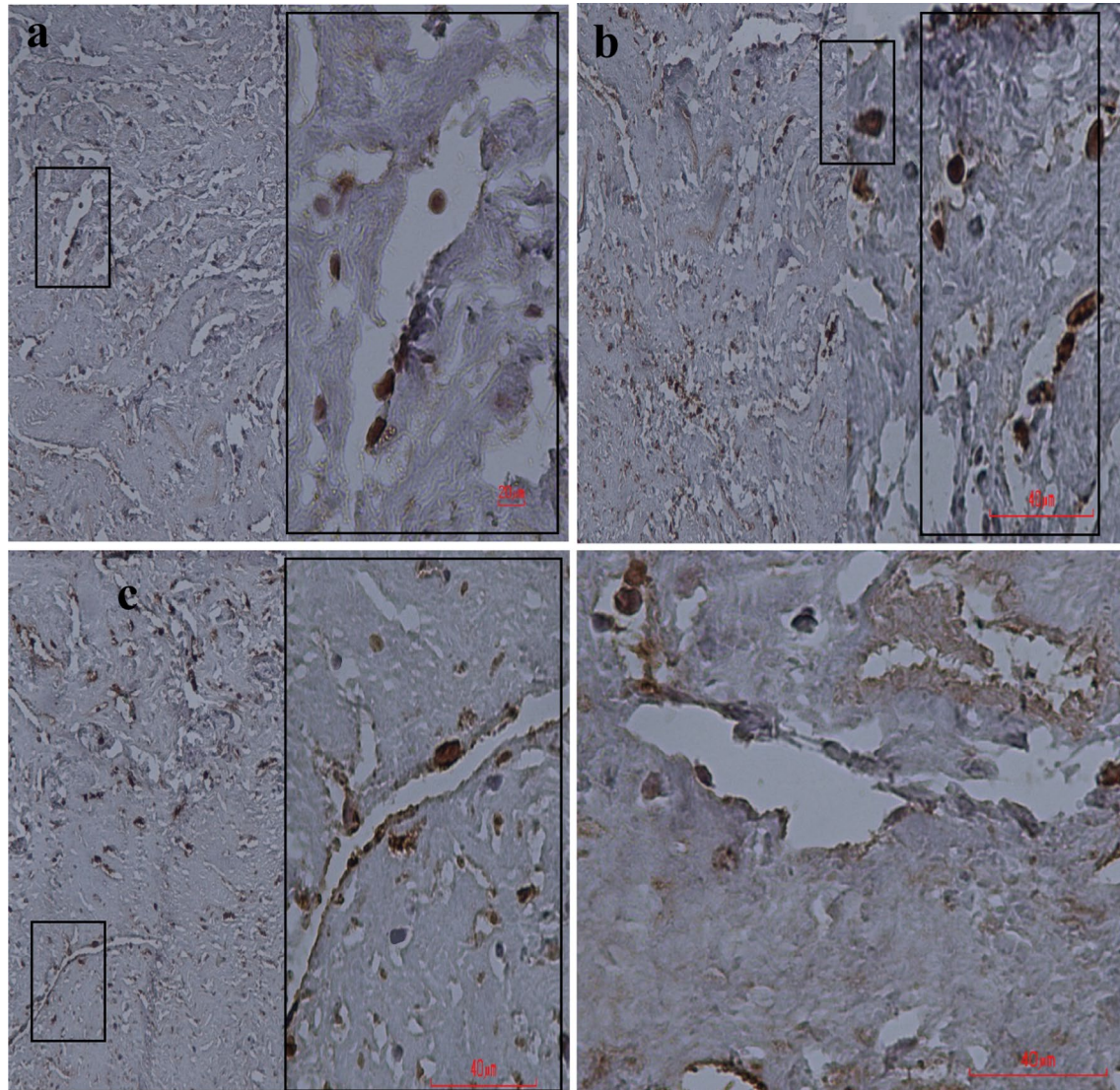
**Discussion**

Women’s menstrual blood as a new source of adult stem cells (MenSCs) is a good choice for cell therapy [5, 11, 12]. Decellularized organs provide an appropriate ECM for tissue-specific cell differentiation. The uterus, as a necessary organ for passing on the stages of embryonic development, is a special option for tissue engineering. Therefore, in this study, we tested the efficiency of cultured MenSCs in the uterine decellularized scaffold. SDS and Triton X-100 were selected for uterine decellularization. Detergents such as SDS have detrimental effects on the ECM constituents. SDS as an anionic detergent with a polar head at the end of the hydrocarbon chain is a hydrophobic (amphipathic) structure. It interacts with proteins and performs decellularization using the destruction of the cell membrane and nucleus. Triton X-100 as a nonionic detergent has a hydrophilic

polyethylene oxide chain and hydrophobic group. This detergent eliminates interaction between lipids and lipid-proteins but does not affect protein interaction, which is useful for maintaining extracellular matrix structure [13]. The data from the current study indicated SDS and Triton X-100 could decellularize the uterus completely. The hoechst staining of decellularized scaffold confirmed the absence of cells. This dye binds to adenine–thymine (A–T) regions of the minor groove of DNA and exhibits distinct fluorescence emission spectra that are dependent on dye-base pair ratios. The complete decellularization of rabbit lung [14], monkey kidneys [15] has been reported by SDS and Triton X-100. The introduced decellularization protocol could be employed in future in vitro and in vivo studies.

Adult stem cells are derived from various tissues such as bone marrow, adipose tissue, umbilical cord blood, and amniotic fluid, but due to difficult access, invasive





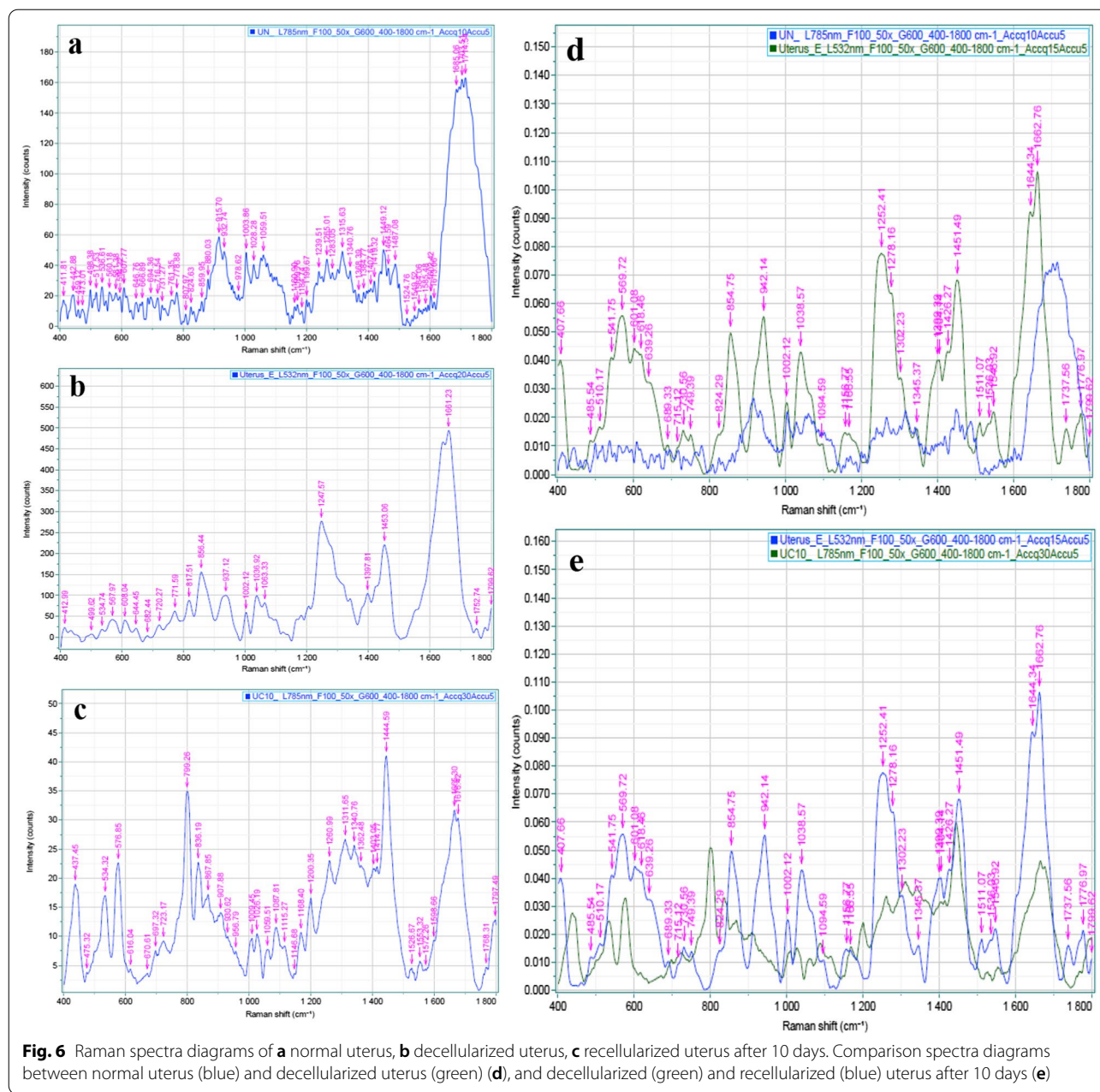
**Fig. 5** The immunohistochemical staining of the recellularized uterine scaffold. Please note the positive reaction of migrant cells as brown dark nuclei stained (**a**) by anti-cytokeratin (CK), **b** anti-smooth muscle actin (SMA), **c** anti-vimentin (Vim), and **d** anti-desmin (Des) antibodies against violet nuclei (arrowhead). Scale bar = 40  $\mu$ m

methods of isolation from individuals, and in some cases, the power of proliferation and low differentiation, the use of these cells also have been constrained. Based on therapies in regenerative medicine hundreds of clinical trials of various MSC have overall shown underwhelming results in regenerative medicine applications. Considerable research has been done on the extraction and differentiation of stem cells of menstrual blood into different cell types in tissue engineering research [5].

Partial toxicity of the ficoll in indirect culture method of MenSCs isolation caused the number of stem cells to be lesser than the direct culture method. Blood clots

rich in nutrients and fibrin, the absence of substances such as ficoll and antibiotics could increase the number of cells in the direct culture method. In direct culture, the number of stem cells obtained is three times as high as the ficoll separation method [7]. MenSCs were used to treat liver fibrosis in mice [16], improved skin ulcers by differentiation into keratinocytes [17] and treat and improve premature ovarian failure (POF) in the mouse model [18, 19].

Age of donor affects many of mesenchymal stem cells functions such as anti-apoptotic mechanisms and proliferation rate, all of which reduce with aging [20]. However,



the proliferative capacity of MenSCs does not appear donor dependent in individuals aged up to 40 years. Older donors (>40 years) showed a weaker proliferation rate of MenSCs [21]. Highly passaged cells revealed increasing in size, losing fibroblastic morphology, and appearing senescent. Pluripotency protein expression reduced during passaging of MenSCs, from 97.5% at the first passage to 19.4% at passage twelve [22].

MTT assay showed a significant difference in the viability of MenSCs seeded on the decellularized scaffolds after 10 days cultures compared to 7 days cultures and

the cells could survive properly within the uterine decellularized scaffolds. The ECM has chemical properties to trigger mitotic activity in the MenSCs which is critical for tissue reconstruction [23].

The results of the electron microscope of the scaffold showed that the three-dimensional structure of the ECM was well preserved. Immunohistochemical staining confirmed the MenSCs penetrated to the uterine scaffold and differentiated to the different cells of the normal uterus such as epithelial cells and smooth muscles. ECM is an essential factor for differentiation, cellular behavior,

and gene regulation [24]. The MenSCs nesting and proliferation have been reported in the presence of induction agents in the porous silicon scaffold matrix of cardiac cells [25]. The MenSCs differentiated to hepatocytes on a three-dimensional nanofiber scaffold [26]. MenSCs show considerable capacity to differentiate into numerous lineages in vitro, although have lesser ability for several MSC lineages. It would now be important to demonstrate the potential of MenSCs to undergo differentiation into these lineages in vivo in animal models. It was shown that MenSCs influence the humoral immune responses in a mouse model of heart transplantation by attenuating antibody responses [27].

The recovery properties of recellularized scaffolds are assessed by their structure and composition. Therefore, preserved GAGs, proteins, proline, and hydroxyproline affect the ability to regenerate and elasticity. Confocal Raman spectroscopy revealed general trends of spectra for collagen fiber in uterine decellularized and recellularized scaffolds that are closely similar. There are many bands at different spectra regions that are assigned for collagen or its components, for example, amide III, amino acids such as tyrosine, phenylalanine, proline, hydroxyproline, and CH<sub>2</sub>/CH<sub>3</sub> groups associated with elastin and collagen. Despite minor differences, Raman spectra obtained from cell-loaded scaffolds accommodate the spectra from the intact uterus. These spectra were attributed to the typical DNA and RNA bands and =C–H in phospholipids, amide III, cholesterol phosphate groups, and phosphatidylinositol and guanine. All of these components are present in the cells, which confirms the presence of cells in the scaffolds.

## Conclusions

The complete decellularization from mice uterine tissue was done by combining chemical agents (ionic and non-ionic detergents). In such a way that the structure of the extracellular matrix was well preserved and suitable natural and non-cellular scaffold was created for tissue engineering. MenSCs extraction was more successful with the direct culture method and more cellular population was obtained. Recellularized scaffold examinations confirmed the success of this method in the development of the uterus. The MenSCs after 10 days have nested in the natural pore of the scaffolds. Tissue engineering by this method provides a future vision for regeneration medicine. The outcomes of this study would bring us one step closer to the ultimate goal of whole human uterus bioengineering.

## Abbreviations

CK: Cytokeratin; DAB: Diaminobenzidine; Des: Desmin; DMEM: Dulbecco's modified Eagle's medium; ECM: Extracellular matrix; EDS: Energy dispersive X-ray spectrometer; FBS: Fetal bovine serum; H&E: Hematoxylin and Eosin; IHC: Immunohistochemistry; MB: Menstrual blood; MenSCs: Menstrual blood stem cells; MTT: 3-(4, 5-Dimethylthiazolyl)-2, 5-diphenyltetrazolium bromide; OCT: Optimal cutting temperature; OD: Optical density; PBS: Phosphate-buffered saline; SDS: Sodium dodecyl sulfate; SEM: Scanning electron microscopy; SMA: Smooth muscle actin; Vim: Vimentin.

## Acknowledgements

The present manuscript is the part of MSC thesis was written by Arezoo Nouri. The authors wish to thank Dr. Mohammad Javad Ashraf at the Pathological Lab of Shiraz University of Medical Sciences for his invaluable assistance in Immunohistochemical studies, Mr. Amin Safaei for his invaluable assistance in Confocal Raman spectroscopy, and Dr. Talaei for the editorial assistance.

## Authors' contributions

Arezoo Nouri performed the experiments and was involved in the collection, analysis, and interpretation of data and manuscript drafting and prepared figures and graphs. Mohammad Hajian performed the IHC and Raman analysis. Malihezaman Monsefi conceived the original idea and supervised the project and interpreted the data and revised the manuscript. All authors read and approved the final manuscript.

## Funding

This work was supported by the vice chancellor of the research deputy of Shiraz University.

## Availability of data and materials

All data generated and analyzed during this study are included in this published article.

## Declarations

### Ethics approval and consent to participate

The animal experiments were approved by the Institutional Animal Ethics and Health Committee of the Biology Department of Shiraz University (IR. SUSC.1397.59431201) and were performed according to the principles of the care and use of laboratory animals established by the National Institute of Health.

### Consent for publication

Not applicable.

### Competing interests

The authors declare that the research was conducted in the absence of any commercial or financial relationships and there are no competing interests.

Received: 26 April 2021 Accepted: 1 July 2021

Published online: 23 August 2021

## References

1. Barzegar A, et al. Epidemiologic study of traffic crash mortality among motorcycle users in Iran (2011–2017). *Chin J Traumatol*. 2020;23(4):219–23.
2. Yang Q, et al. A cartilage ECM-derived 3-D porous acellular matrix scaffold for in vivo cartilage tissue engineering with PKH26-labeled chondrogenic bone marrow-derived mesenchymal stem cells. *Biomaterials*. 2008;29(15):2378–87.
3. Cui C-H, et al. Menstrual blood-derived cells confer human dystrophin expression in the murine model of Duchenne muscular dystrophy via cell fusion and myogenic transdifferentiation. *Mol Biol Cell*. 2007;18(5):1586–94.
4. Liu Y, et al. Therapeutic potential of menstrual blood-derived endometrial stem cells in cardiac diseases. *Cell Mol Life Sci*. 2019;76(9):1681–95.

5. Borlongan CV, et al. Menstrual blood cells display stem cell-like phenotypic markers and exert neuroprotection following transplantation in experimental stroke. *Stem Cells Dev.* 2010;19(4):439–52.
6. Mou X-Z, et al. Menstrual blood-derived mesenchymal stem cells differentiate into functional hepatocyte-like cells. *J Zhejiang Univ Sci B.* 2013;14(11):961–72.
7. Kazemnejad S, et al. Chondrogenic differentiation of menstrual blood-derived stem cells on nanofibrous scaffolds. *Stem Cell Nanotechnol Methods Protoc* 2013; 149–169.
8. Faramarzi H, et al. The potential of menstrual blood-derived stem cells in differentiation to epidermal lineage: a preliminary report. *World J Plast Surg.* 2016;5(1):26.
9. Bancroft JD, Stevens A. *Theory and practice of histological techniques.* 1990.
10. Movasaghi Z, Rehman S, Rehman IU. Raman spectroscopy of biological tissues. *Appl Spectrosc Rev.* 2007;42(5):493–541.
11. Alllickson J, Xiang C. Human adult stem cells from menstrual blood and endometrial tissue. *J Zhejiang Univ.* 2012;13(5):419.
12. Patel AN, et al. Multipotent menstrual blood stromal stem cells: isolation, characterization, and differentiation. *Cell Transpl.* 2008;17(3):303–11.
13. Crapo PM, Gilbert TW, Badylak SF. An overview of tissue and whole organ decellularization processes. *Biomaterials.* 2011;32(12):3233–43.
14. Shahri NM, et al. In vitro decellularization of rabbit lung tissue. *Cell J (Yakhteh).* 2013;15(1):83.
15. Nakayama KH, et al. Decellularized rhesus monkey kidney as a three-dimensional scaffold for renal tissue engineering. *Tissue Eng Part A.* 2010;16(7):2207–16.
16. Chen L, et al. Human menstrual blood-derived stem cells ameliorate liver fibrosis in mice by targeting hepatic stellate cells via paracrine mediators. *Stem Cells Transl Med.* 2017;6(1):272–84.
17. Akhavan-Tavakoli M, et al. In vitro differentiation of menstrual blood stem cells into keratinocytes: a potential approach for management of wound healing. *Biologicals.* 2017;48:66–73.
18. Liu T, et al. Transplantation of human menstrual blood stem cells to treat premature ovarian failure in mouse model. *Stem Cells Dev.* 2014;23(13):1548–57.
19. Wang X-J, et al. Human menstrual blood-derived mesenchymal stem cells as a cellular vehicle for malignant glioma gene therapy. *Oncotarget.* 2017;8(35):58309.
20. Alt E, et al. Aging alters tissue resident mesenchymal stem cell properties. *Stem Cell Res.* 2012;8(2):215–25.
21. Chen J, et al. Effects of donors' age and passage number on the biological characteristics of menstrual blood-derived stem cells. *Int J Clin Exp Pathol.* 2015;8(11):14584.
22. Khanmohammadi M, et al. Modified protocol for improvement of differentiation potential of menstrual blood-derived stem cells into adipogenic lineage. *Cell Prolif.* 2014;47(6):615–23.
23. Reing JE, et al. Degradation products of extracellular matrix affect cell migration and proliferation. *Tissue Eng Part A.* 2009;15(3):605–14.
24. Everitt EA, Malik AB, Hendey B. Fibronectin enhances the migration rate of human neutrophils in vitro. *J Leukoc Biol.* 1996;60(2):199–206.
25. Rahimi M, et al. Evaluation of menstrual blood stem cells seeded in bio-compatible Bombyx mori silk fibroin scaffold for cardiac tissue engineering. *J Biomater Appl.* 2014;29(2):199–208.
26. Sani F, et al. Differentiation of menstrual blood derived stem cell (MensSCs) to hepatocyte-like cell on three dimensional nanofiberscaffold: poly caprolacton (PCL). *J Biomed Sci Eng.* 2016;9(04):216.
27. Xu X, et al. Prolongation of cardiac allograft survival by endometrial regenerative cells: focusing on B-cell responses. *Stem Cells Transl Med.* 2017;6(3):778–87.

### Publisher's Note

Springer Nature remains neutral with regard to jurisdictional claims in published maps and institutional affiliations.

Ready to submit your research? Choose BMC and benefit from:

- fast, convenient online submission
- thorough peer review by experienced researchers in your field
- rapid publication on acceptance
- support for research data, including large and complex data types
- gold Open Access which fosters wider collaboration and increased citations
- maximum visibility for your research: over 100M website views per year

At BMC, research is always in progress.

Learn more [biomedcentral.com/submissions](https://biomedcentral.com/submissions)

