

RESEARCH ARTICLE

Open Access



A five-year prospective study of spinal radiographic progression and its predictors in men and women with ankylosing spondylitis

Anna Deminger^{1*} , Eva Klingberg¹, Mats Geijer^{2,3}, Jan Göthlin⁴, Martin Hedberg⁵, Eva Rehnberg⁶, Hans Carlsten¹, Lennart T. Jacobsson¹ and Helena Forsblad-d'Elia^{1,7}

Abstract

Background: Knowledge about predictors of new spinal bone formation in patients with ankylosing spondylitis (AS) is limited. AS-related spinal alterations are more common in men; however, knowledge of whether predictors differ between sexes is lacking. Our objectives were to study spinal radiographic progression in patients with AS and investigate predictors of progression overall and by sex.

Methods: Swedish patients with AS, age (mean \pm SD) 50 ± 13 years, were included in a longitudinal study. At baseline and at 5-year follow up, spinal radiographs were graded according to the modified Stoke Ankylosing Spondylitis Spine Score (mSASSS). Predictors were assessed by questionnaires, spinal mobility tests and blood samples.

Results: Of 204 patients included, 166 (81%) were re-examined and 54% were men. Men had significantly higher mean mSASSS at baseline and higher mean increase in mSASSS than women (1.9 ± 2.8 vs. 1.2 ± 3.3 ; $p = 0.005$). More men than women developed new syndesmophytes (30% vs. 12%; $p = 0.007$). Multivariate logistic regression analyses with progression ≥ 2 mSASSS units over 5 years or development of new syndesmophytes as the dependent variable showed that presence of baseline AS-related spinal radiographic alterations and obesity (OR 3.78, 95% CI 1.3 to 11.2) were independent predictors of spinal radiographic progression in both sexes. High C-reactive protein (CRP) was a significant predictor in men, with only a trend seen in women. Smoking predicted progression in men whereas high Bath Ankylosing Spondylitis Metrology Index (BASMI) and exposure to bisphosphonates during follow up (OR 4.78, 95% CI 1.1 to 20.1) predicted progression in women.

Conclusion: This first report on sex-specific predictors of spinal radiographic progression shows that predictors may partly differ between the sexes. New predictors identified were obesity in both sexes and exposure to bisphosphonates in women. Among previously known predictors, baseline AS-related spinal radiographic alterations predicted radiographic progression in both sexes, high CRP was a predictor in men (with a trend in women) and smoking was a predictor only in men.

Trial registration: [ClinicalTrials.gov, NCT00858819](https://clinicaltrials.gov/ct2/show/study/NCT00858819). Registered on 9 March 2009. Last updated 28 May 2015.

Keywords: Ankylosing spondylitis, Outcomes research, Treatment, Inflammation, Longitudinal study, Radiography

* Correspondence: anna.deminger@vgregion.se

¹Department of Rheumatology and Inflammation Research, Sahlgrenska Academy at University of Gothenburg, Box 480, 405 30 Gothenburg, Sweden
Full list of author information is available at the end of the article



Background

Ankylosing spondylitis (AS) is a chronic, inflammatory disease mainly affecting the sacroiliac joints and the spine, where it is characterized by pathological new bone formation and development of syndesmophytes. The new bone formation and spinal inflammation can lead to spinal stiffness and loss of mobility [1]. The ratio of men to women with AS is estimated to be 2–3 to 1 [2].

Conventional x-ray is still considered the gold standard for assessing chronic spinal alterations in AS, with the modified Stoke Ankylosing Spondylitis Spine Score (mSASSS) considered as the most valid method for quantifying these changes [3]. AS-related spinal alterations evaluated by different methods have been shown to be more severe in men [4–6] and longitudinal studies have shown faster radiographic progression in men [6, 7].

There is still limited knowledge on predictors of spinal radiographic progression in AS. The strongest predictor is the presence of syndesmophytes at baseline [5, 8–10]. Higher disease activity measured by the Ankylosing Spondylitis Disease Activity Score (ASDAS) has been associated with more spinal radiographic progression in AS and early axial spondyloarthritis (SpA) [11, 12]. Inflammation measured by erythrocyte sedimentation rate (ESR) or C-reactive protein (CRP) and smoking has been shown to predict radiographic progression in early SpA [10]. Previous studies have largely been in men and knowledge about what predicts radiographic progression in women is scarce.

The objectives of this longitudinal study were to assess spinal radiographic progression in patients with AS and to investigate predictors for progression overall and by sex.

Methods

Patients

The patients were recruited at baseline in 2009 from the rheumatology clinics at Sahlgrenska University Hospital in Gothenburg and the hospitals at Borås and Alingsås, Sweden [13]. The inclusion criterion was AS according to the modified New York criteria [14]. Exclusion criteria were psoriasis, inflammatory bowel disease, dementia, pregnancy and difficulties in understanding the Swedish language. A total of 204 patients completed the baseline protocol and were invited to participate in the 5-year follow up. Written informed consent was obtained from the participants and approval by the regional ethics committee in Gothenburg was obtained both at baseline and at 5-year follow up.

Physical examination and questionnaires

The same questionnaires and physical examinations, including the Bath AS Metrology Index (BASMI) [15] were applied at baseline and at the 5-year follow up. Patients were examined by one physician at baseline (EK)

and one physician at follow up (AD). Questionnaires included medical history, medication, occupation and smoking and the Bath AS Disease Activity Index (BASDAI), the Bath AS Functional Index (BASFI) and the Bath AS Patient Global score (BAS-G) [16–18]. The ASDAS based on CRP (ASDAS_CRP) was calculated [19]. Type of occupation was divided into “blue-collar” work, generally involving manual labor and physical tasks, and “white-collar” work, usually requiring less physical activity and more formal education [20]. Body mass index (BMI) was grouped in categories: 1 = normal (BMI 18.5 to 24.9 kg/m²), 2 = overweight (BMI 25.0 to 29.9), 3 = obese (BMI ≥ 30) [21]. Data about non-steroidal anti-inflammatory drug (NSAID) consumption during follow up was collected according to the Assessment of SpondyloArthritis international Society (ASAS) recommendations [22]. All patients were invited to undergo transthoracic echocardiography at baseline as previously described [23].

Radiography

Conventional radiographs of the spine were obtained at baseline and at the 5-year follow up and scored according to the mSASSS. With mSASSS, each anterior corner of the cervical spine (from the lower corner of vertebra C2 to the upper corner of T1) and the lumbar spine (from the lower corner of T12 to the upper corner of S1) on lateral radiographs is evaluated with a score between 0 and 3 (0 = no abnormality, 1 = erosion, sclerosis or squaring, 2 = syndesmophyte, 3 = bridging syndesmophyte), with the total score ranging from 0 to 72 [24]. All radiographs were scored simultaneously by the same musculoskeletal radiologist (MG) blinded to the clinical data but with known chronological order. At baseline, 0.3% of the vertebral corners (VC) were not assessable and 0% were not assessable at follow up. Missing VC was handled according to Ramiro et al. [7] where missing baseline VC was replaced by the score from the next observation with the mean progression sum of the segment subtracted from that score. Missing follow-up VC was replaced by the score of the previous observation with the mean progression score of the segment added to that score. No patient had missing VC at both baseline and follow up. Definite radiographic progression was defined either as an increase in mSASSS over 5 years by ≥ 2 points [25] or as development of a new syndesmophyte, defined as mSASSS of at least 2 at a vertebral level with a score of 0 or 1 at baseline [5].

Laboratory tests

Blood samples were analyzed by standard laboratory techniques. The time-averaged ESR and CRP for the last 5 years before follow up were obtained from the medical records, and calculated using the first recorded test for each year unless the patient had a recorded infection at

that time point, in which case the ESR/CRP was replaced by the subsequent test.

Statistics

Statistical analyses were performed using IBM SPSS Statistics 22 (IBM, Armonk, NY, USA). Descriptive statistics are presented as means with standard deviations (SD) and frequencies with percentages. To compare measurements in men and women the *t* test for normally distributed data or the Mann-Whitney U test for not normally distributed data were used for continuous data, and the χ^2 test or Fisher's exact test, when appropriate, was used for categorical data. The Wilcoxon signed rank test was used to compare mSASSS at baseline and at follow up. Radiographs of 40 randomly selected patients were re-scored by the same reader for calculations of reliability data. Intra-reader agreement for status scores and change scores was evaluated with an intraclass correlation coefficient (ICC) two-way mixed-effect model, with single measurement and absolute agreement. Values < 0.5 indicate poor agreement, 0.5–0.75 moderate agreement, 0.75–0.90 good agreement and > 0.90 excellent agreement [26]. The smallest detectable change (SDC), the progression reliably detected above the measurement error, was calculated as proposed by Bruynesteyn et al. [27].

Univariate and multivariate (backward method) logistic regression analyses were performed to find predictors for progression of ≥ 2 mSASSS units over 5 years and the development of new syndesmophytes. Variables with *p* values ≤ 0.2 in the univariate analyses were entered into the multivariate logistic regression model for the total group. Because of fewer observations in the subgroups, a *p* value < 0.1 was used for sex-stratified analyses. Variables were entered manually into the multivariate model and if there was multicollinearity (BASMI and BASFI), the variable with the lowest *p* value in the univariate analyses was kept in the model. The same principle was used for highly correlated variables: age and duration of symptoms and BASMI and lateral spinal flexion (as lateral spinal flexion is a part of BASMI) but for CRP, time-averaged CRP, ESR and time-averaged ESR the baseline variable was prioritized. For mSASSS and BASMI and mSASSS and lateral flexion (highly correlated in the total group and in men), the mSASSS was chosen. Interactions between the main effect variables from the multiple logistic analyses were tested, and if a significant interaction ($p \leq 0.05$) was identified, the estimates for progression in the subgroups were analyzed. Goodness of fit was assessed with the Hosmer-Lemeshow test.

To consider covariates that affect receiving bisphosphonates or tumor necrosis factor inhibitor (TNFi), propensity scores (PS) for the probabilities of being

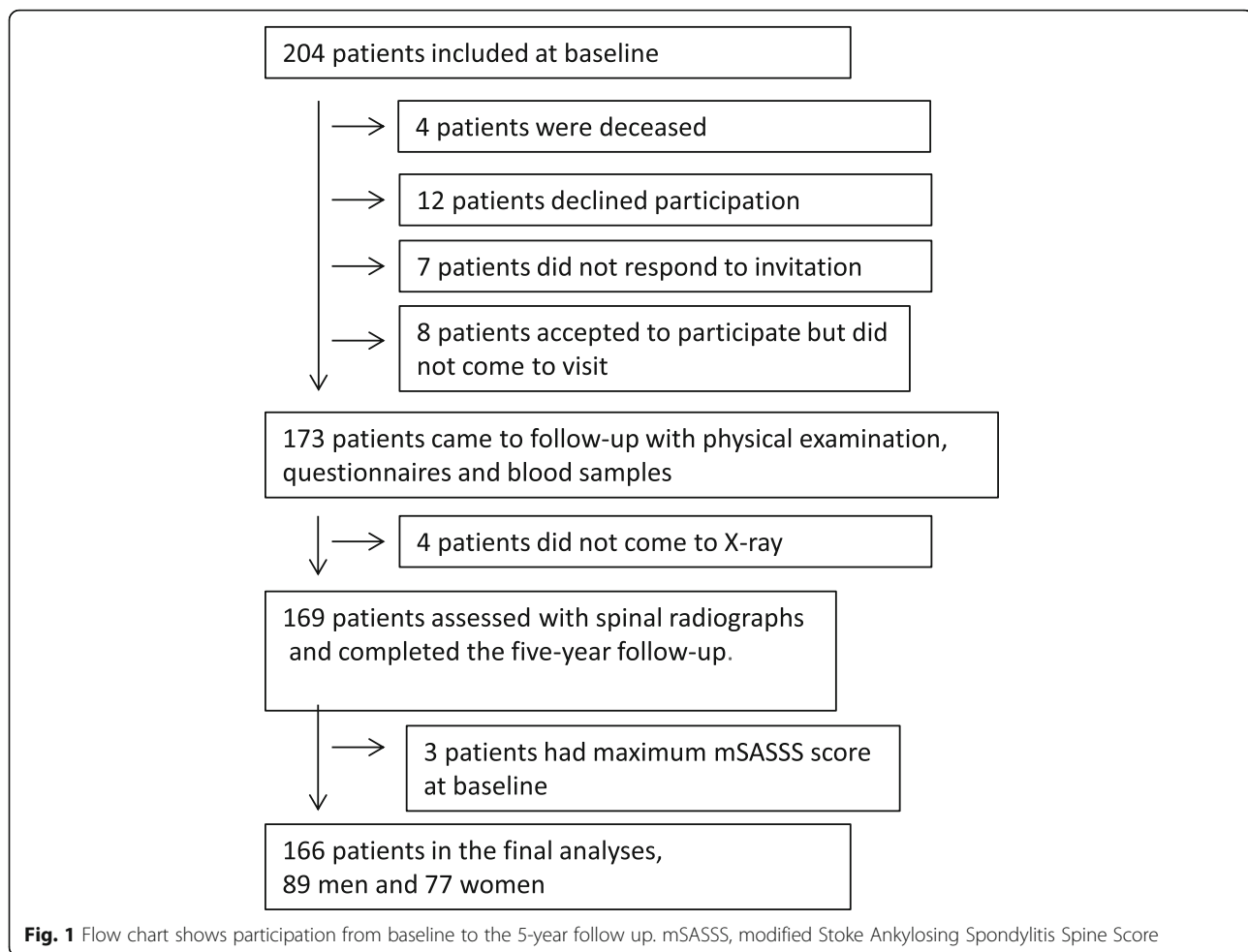
exposed to bisphosphonates, being exposed to TNFi or being treated with TNFi for ≥ 2 years during follow up, respectively, were calculated. Variables included in the PS were sex, HLA-B27, baseline CRP, BASDAI, mSASSS, smoking pack-years, BMI categories, use of NSAID, symptom duration and age of onset of symptoms. The PS and the treatment variable were used as covariates in standard binary logistic regression analyses with either definition of progression as the dependent variable. In order to evaluate any interaction between NSAID and TNFi-exposure, three categorical groups were formed: high NSAID (NSAID index ≥ 50) and TNFi+/-, low NSAID (NSAID index < 50) and TNFi+/- and no NSAID and TNFi+/- . Each group was used as a covariate either in univariate or together with the PS for exposure to TNFi in multivariate logistic regression analyses for radiographic progression, as aforementioned. All tests were two-tailed and $p \leq 0.05$ was considered statistically significant.

Results

Patients

Of the 204 patients included at baseline, 169 (83%) completed all examinations at the 5-year follow up: 4 patients died during follow up. Three men with maximum mSASSS at baseline were excluded from the analyses, resulting in 166 (81%) completers, including 89 men (54%) and 77 women (46%) (Fig. 1). The 166 completers did not differ in baseline age or mSASSS compared to the non-completers; the non-completers included patients coming to follow up with baseline mSASSS = 72 and those not coming to follow up (50 ± 13 vs. 50 ± 14 years). There was a trend towards more men in the non-completers vs. the completers (71% vs. 54%, $p = 0.078$), and there was no significant difference when analyzing only patients who were still alive at follow-up ($p = 0.19$).

Characteristics and medication use in the total group and a comparison between men and women at baseline are shown in Table 1. There were some significant differences between men and women; more men were HLA-B27-positive, men had lower ESR, higher time-averaged CRP during follow up, and a trend toward lower disease activity measured by the BASDAI. Men had higher mean (SD) mSASSS at baseline than women (20.3 (21.9) vs. 6.4 (9.6), $p < 0.001$) and 57% of the men had syndesmophytes compared with 33% of the women ($p = 0.002$). At baseline, 78% of the patients reported using NSAIDs and 20% had treatment with TNFi, with no significant differences between sexes. Bisphosphonates were used by a smaller proportion of men than women (1% vs. 8%, $p = 0.050$).



Spinal radiographic progression

In the total group, mSASSS progressed from mean (SD) 13.9 (18.6) units to 15.4 (19.6) units. The mean progression was 1.6 (3.3) mSASSS units over 5 years ($p < 0.001$), with more progression in men compared to women (1.9 (2.8) vs 1.2 (3.3), $p = 0.005$) (Fig. 2). The mSASSS ranged from 0 to 70 in men at baseline and from 0 to 72 at follow up. In women the range was 0–46 at baseline and 0–57 at follow up. Five of the completers had baseline mSASSS > 65 . One of these patients reached a maximum mSASSS of 72 at follow up. This patient fulfilled both definitions of progression. The ICC for status scores were 0.98 (95% CI 0.96 to 0.99) for both baseline and follow-up scores and 0.62 (95% CI 0.36 to 0.78) for change scores. The SDC was 2.65.

Progression ≥ 2 mSASSS units over 5 years was seen in 47 patients (28%), more frequently in men than in women, with 32 men (36%) vs. 15 women (20%) ($p = 0.029$). The development of new syndesmophytes was seen in 36 patients (22%), with 27 men (30%) and 9 women (12%) ($p = 0.007$).

Predictors of progression defined as increase of ≥ 2 mSASSS units or new syndesmophyte development over 5 years in univariate analyses (Tables 2 and 3)

Whole study population: several predictors were the same for both definitions of progression. Demographic variables that predicted progression were male sex, older age, and being overweight or obese. Disease-BRS81665 related variables and medication that predicted progression were history of anterior uveitis, high BASMI, reduced lateral spinal flexion, presence of syndesmophytes at baseline and exposure to bisphosphonates during follow up. Inflammation measured by CRP predicted progression of ≥ 2 mSASSS units over 5 years.

Sex-stratified analyses: obesity predicted progression in men according to both definitions. Ever-smoking and high CRP during follow up predicted progression of ≥ 2 mSASSS units over 5 years. Older age and being overweight predicted development of new syndesmophytes. In women exposure to bisphosphonates predicted progression according to both definitions. Shared predictors in both men and women were disease-related variables such as high BASMI, reduced lateral spinal flexion and

Table 1 Baseline characteristics and medication at baseline and during follow up in 166 patients with ankylosing spondylitis

	Total group	Men (n = 89)	Women (n = 77)	p value
Demographic variables				
Age, years	50 (13)	49 (12)	51 (13)	0.45
Current smokers	17 (10)	8 (9)	9 (12)	0.75
Ever-smokers	72 (43)	41 (46)	31 (40)	0.55
BMI category: normal/overweight/obese	85 (51)/ 56 (34)/ 25 (15)	41 (46)/ 33 (37)/ 15 (17)	44 (57)/ 23 (30)/ 10 (13)	0.36
Blue-collar worker ^a	40 (33)	21 (33)	19 (33)	1.00
Time between x-rays, months	66 (3)	65 (3)	67 (1)	0.003
Disease-related variables				
Duration of symptoms, years	24 (13)	23 (13)	24 (13)	0.58
History of anterior uveitis	85 (51)	50 (56)	35 (46)	0.22
History of peripheral arthritis	95 (57)	47 (53)	48 (62)	0.28
History of coxitis	13 (8)	7 (8)	6 (8)	1.00
BASMI, score	3.0 (1.5)	3.2 (1.8)	2.9 (1.2)	0.61
BASFI, score	2.5 (2.0)	2.3 (1.9)	2.7 (2.1)	0.25
BASDAI, score	3.4 (2.1)	3.1 (2.1)	3.7 (2.0)	0.056
ASDAS_CRP, score	2.1 (0.9)	2.1 (0.9)	2.1 (0.8)	0.53
CRP, mg/L	5.4 (8.5)	6.5 (10.5)	4.2 (5.1)	0.26
Time-averaged CRP during follow up, mg/L	5.8 (5.9)	6.5 (6.4)	4.9 (5.0)	0.043
ESR, mm/h	14.2 (11.2)	12.7 (11.5)	15.9 (10.6)	0.003
Time-averaged ESR during follow-up, mm/h	12.2 (8.4)	10.9 (7.8)	13.8 (8.9)	0.009
HLA-B27 positive	143 (86)	82 (92)	61 (79)	0.030
Aortic insufficiency ^b	25 (16)	13 (16)	12 (17)	0.98
mSASSS, score	13.9 (18.6)	20.3 (21.9)	6.4 (9.6)	< 0.001
Presence of syndesmophyte	76 (46)	51 (57)	25 (33)	0.002
Medications				
Patients on NSAIDs baseline	129 (78)	66 (74)	63 (82)	0.32
NSAID index during follow up, 0–100	34 (38)	39 (39)	29 (33)	0.31
Patients on TNFi at baseline	33 (20)	22 (25)	11 (14)	0.14
Patients exposed to TNFi during follow up	49 (30)	30 (34)	19 (25)	0.27
Patients on bisphosphonate at baseline	7 (4)	1 (1)	6 (8)	0.050
Patients exposed to bisphosphonate during follow-up	30 (18)	11 (12)	19 (25)	0.064

Values are means (SD) or numbers of patients (%)

ASDAS_CRP Ankylosing Spondylitis Disease Activity Score_C-reactive protein, BASDAI Bath Ankylosing Spondylitis Disease Activity Index, BASFI Bath Ankylosing Spondylitis Functional Index, BASMI Bath Ankylosing Spondylitis Metrology Index, BMI body mass index, CRP C-reactive protein, ESR erythrocyte sedimentation rate, HLA-B27 human leukocyte antigen B27, mSASSS modified Stoke Ankylosing Spondylitis Spine Score, NSAID non-steroidal anti-inflammatory drug, TNFi tumor necrosis factor inhibitor

^an = 120 for total group, 63 men and 57 women

^bn = 153 for total group, 83 men and 70 women

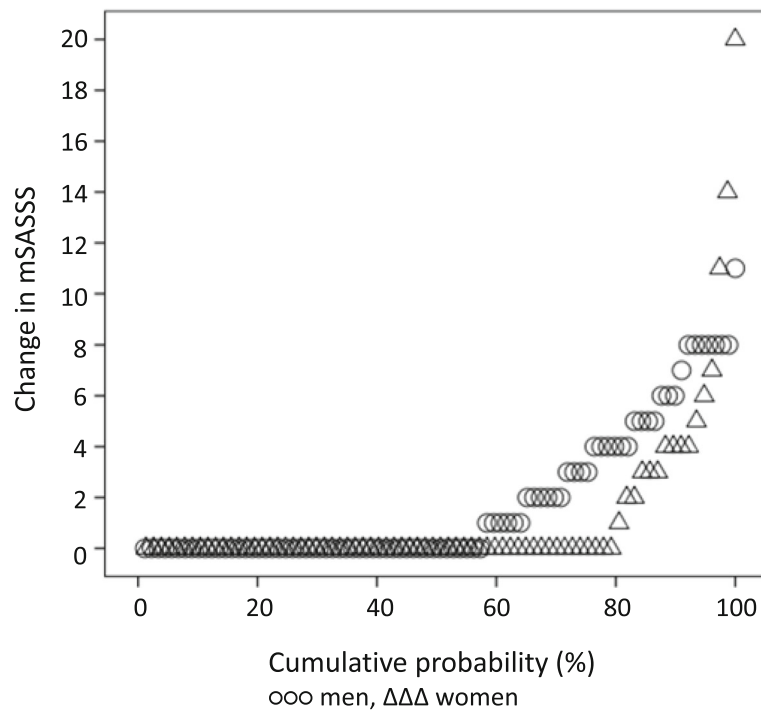


Fig. 2 Cumulative probability for the change in modified Stoke Ankylosing Spondylitis Spine Score (mSASSS) from baseline to follow up in 89 men and 77 women with ankylosing spondylitis

presence of syndesmophytes at baseline (according to both definitions for progression).

Predictors of progression defined as increase of ≥ 2 mSASSS units or new syndesmophyte development over 5 years in multivariate analyses (Figs. 3 and 4)

Whole study population: in multivariate analyses exposure to bisphosphonates during follow up was associated with progression according to both definitions. Obesity, high baseline CRP and male sex predicted progression of ≥ 2 mSASSS units over 5 years. Baseline syndesmophytes and older age predicted development of new syndesmophytes. For development of new syndesmophytes, the point estimates in the model were similar irrespective of whether baseline CRP or time-averaged CRP were included in the model.

Sex-stratified analyses: in men, ever-smoking, obesity and high baseline CRP predicted progression defined as ≥ 2 mSASSS units over 5 years. Current smoking and presence of baseline syndesmophytes predicted development of new syndesmophytes. In women, exposure to bisphosphonates was independently associated with progression according to both definitions. Baseline mSASSS predicted progression defined as ≥ 2 mSASSS over 5 years whereas there was only a trend for baseline CRP. Obesity and high BASMI predicted development of new syndesmophytes. BASMI also remained significant if the

model was corrected for baseline mSASSS instead of baseline syndesmophytes.

A significant interaction was identified for age and exposure to bisphosphonates on the development of new syndesmophytes. When stratifying by median age (≥ 50 vs. < 50 years), the estimates for exposure to bisphosphonates for the respective group was not significant (OR 1.34 95% CI 0.49 to 3.66 vs. OR 4.56 95% CI 0.72 to 28.95).

Effect of treatment with bisphosphonates in PS-adjusted analyses in the whole study population

Of the 30 patients exposed to bisphosphonates during follow up, 7 patients had used bisphosphonates at baseline. The remaining 23 patients started the medication soon after inclusion, at mean (SD) 7 (0.5) months. The PS for the probability of being exposed to bisphosphonates during follow up was calculated as described in "Methods". In the logistic regression model with the PS included, exposure to bisphosphonates was still a significant predictor for development of new syndesmophytes (OR 2.96, 95% CI 1.02 to 8.62), but was not statistically significant for progression of ≥ 2 mSASSS units over 5 years (Table 4).

Effect of treatment with TNFi in PS-adjusted analyses in the whole study population

Exposure to TNFi during follow up was not significant (p value >0.2) in the univariate analyses of association with radiographic progression (Tables 2 and 3) and was

Table 2 Univariate logistic regression analyses for progression of ≥ 2 mSASSS units over 5 years

	Total group, <i>n</i> = 166			Men, <i>n</i> = 89			Women, <i>n</i> = 77		
	OR	95% CI	<i>p</i> value	OR	95% CI	<i>p</i> value	OR	95% CI	<i>p</i> value
Demographic variables									
Male sex	2.32	1.14 to 4.72	0.020	NA			NA		
Age, years	1.03	1.01 to 1.06	0.021	1.03	1.00 to 1.07	0.078	1.05	1.00 to 1.10	0.075
BMI: overweight (reference, normal)	2.40	1.09 to 5.26	0.029	2.62	0.95 to 7.21	0.062	1.76	0.47 to 6.54	0.40
obese (reference, normal)	5.06	1.93 to 13.24	0.001	5.33	1.50 to 19.0	0.010	4.22	0.91 to 19.51	0.065
Ever-smoker	1.74	0.88 to 3.44	0.11	3.53	1.42 to 8.77	0.007	0.47	0.14 to 1.65	0.24
Current smoker	1.44	0.50 to 4.14	0.50	3.33	0.74 to 15.00	0.12	0.48	0.06 to 4.18	0.51
Blue-collar work ^a	1.31	0.55 to 3.12	0.55	1.00	0.31 to 3.19	1.00	1.91	0.50 to 7.29	0.35
Time between x-rays, months	0.92	0.81 to 1.05	0.21	0.96	0.83 to 1.11	0.57	1.15	0.66 to 2.00	0.63
Disease-related variables									
Duration of symptoms, years	1.02	0.99 to 1.04	0.24	1.01	0.98 to 1.05	0.57	1.03	0.99 to 1.08	0.17
HLA-B27 positive	1.50	0.52 to 4.30	0.45	1.44	0.26 to 7.90	0.67	1.06	0.26 to 4.33	0.93
History of coxitis	0.74	0.20 to 2.83	0.66	0.27	0.03 to 2.39	0.24	2.23	0.37 to 13.51	0.38
History of uveitis	2.33	1.16 to 4.71	0.018	2.28	0.92 to 5.66	0.076	2.08	0.66 to 6.56	0.21
BASMI, score	1.65	1.29 to 2.10	<0.001	1.43	1.10 to 1.86	0.008	2.58	1.42 to 4.69	0.002
Lateral spinal flexion, cm	0.89	0.84 to 0.96	0.001	0.91	0.84 to 0.98	0.014	0.83	0.71 to 0.96	0.012
BASFI, score	1.15	0.97 to 1.36	0.10	1.13	0.90 to 1.42	0.28	1.27	0.96 to 1.67	0.089
BASDAI, score	0.98	0.83 to 1.15	0.80	0.93	0.76 to 1.15	0.52	1.17	0.87 to 1.56	0.30
ASDAS_CRP, score	1.14	0.78 to 1.68	0.51	1.12	0.70 to 1.80	0.64	1.24	0.63 to 2.46	0.54
CRP, mg/L	1.06	1.02 to 1.11	0.008	1.05	1.00 to 1.10	0.051	1.09	0.99 to 1.21	0.083
Time-averaged CRP, mg/L	1.08	1.02 to 1.14	0.010	1.09	1.01 to 1.17	0.035	1.05	0.95 to 1.16	0.36
ESR, mm/h	1.02	0.99 to 1.05	0.19	1.02	0.98 to 1.06	0.39	1.04	0.99 to 1.09	0.10
Time-averaged ESR, mm/h	1.03	0.99 to 1.07	0.11	1.05	0.99 to 1.11	0.097	1.04	0.98 to 1.10	0.21
Syndesmophytes at baseline	6.46	2.98 to 14.03	<0.001	5.55	1.98 to 15.54	0.001	6.27	1.85 to 21.24	0.003
mSASSS baseline, units	1.04	1.02 to 1.05	<0.001	1.02	1.00 to 1.04	0.046	1.11	1.04 to 1.19	0.001
Aortic insufficiency ^b	1.20	0.48 to 3.03	0.70	1.20	0.35 to 4.06	0.77	1.28	0.30 to 5.46	0.74
Medication									
NSAID index, 0–100	1.01	1.00 to 1.01	0.26	1.00	0.99 to 1.02	0.52	1.00	0.99 to 1.02	0.62
Exposure to TNFi	1.17	0.56 to 2.43	0.67	0.84	0.33 to 2.12	0.71	1.71	0.50 to 5.85	0.39
Exposure to bisphosphonates	2.29	1.01 to 5.21	0.047	1.57	0.44 to 5.63	0.49	5.30	1.59 to 17.69	0.007

ORs reflect a change in one unit for continuous variables. All variables are baseline values except for time-averaged variables and medications. Significant *p* values are shown in bold typeface

ASDAS_CRP Ankylosing Spondylitis Disease Activity Score_C-reactive protein, BASDAI Bath Ankylosing Spondylitis Disease Activity Index, BASFI Bath Ankylosing Spondylitis Functional Index, BASMI Bath Ankylosing Spondylitis Metrology Index, BMI body mass index, CRP C-reactive protein, ESR erythrocyte sedimentation rate, HLA-B27 Human leukocyte antigen B27, mSASSS modified Stoke Ankylosing Spondylitis Spine Score, NSAID non-steroidal anti-inflammatory drug, TNFi tumor necrosis factor inhibitor

n = 120 for total group, *n* = 63 for men, *n* = 57 for women

[†]*n* = 153 for total group, *n* = 83 for men and *n* = 70 for women

thus not included in the multivariate models. To further study associations between TNFi and spinal radiographic progression, the PS for exposure to TNFi or use of TNFi for ≥ 2 years during follow up was calculated as described in “Methods”. In the logistic regression model with the PS included, exposure to TNFi (*n* = 49) or use of TNFi for ≥ 2 years during follow up (*n* = 38) was still not significantly associated with radiographic progression (Table 4).

To analyze if concomitant use of NSAID and TNFi could have an impact on spinal progression, the patients were grouped according to NSAID and TNFi use during follow up as described in “Methods”. There was no significant relationship between dose of NSAID and concomitant use of TNFi in these regression analyses (Table 5). However, only 10 patients had a combination of high-dose NSAID and exposure to TNFi.

Table 3 Univariate logistic regression analyses for development of new syndesmophytes over 5 years

	Total group, n = 166			Men, n = 89			Women, n = 77		
	OR	95% CI	p value	OR	95% CI	p value	OR	95% CI	p value
Demographic variables									
Male sex	3.29	1.44 to 7.54	0.005	NA			NA		
Age, years	1.05	1.02 to 1.09	0.003	1.06	1.02 to 1.10	0.007	1.06	0.99 to 1.13	0.082
BMI: overweight (reference, normal)	2.46	1.04 to 5.85	0.042	3.16	1.08 to 9.22	0.036	0.95	0.16 to 5.63	0.96
obese (reference, normal)	4.49	1.62 to 12.44	0.004	4.25	1.16 to 15.60	0.029	4.29	0.78 to 23.43	0.093
Ever-smoker	1.22	0.58 to 2.56	0.60	1.73	0.70 to 4.31	0.24	0.38	0.07 to 1.99	0.25
Current smoker	2.16	0.74 to 6.32	0.16	4.47	0.99 to 20.29	0.052	0.94	0.10 to 8.51	0.95
Blue-collar work ^a	1.18	0.45 to 3.10	0.74	1.47	0.44 to 4.87	0.53	0.78	0.14 to 4.43	0.78
Time between x-rays	0.82	0.71 to 0.94	0.004	0.88	0.75 to 1.02	0.083	0.75	0.36 to 1.56	0.44
Disease-related variables									
Duration of symptoms, years	1.02	0.99 to 1.05	0.13	1.02	0.99 to 1.06	0.26	1.04	0.98 to 1.09	0.18
HLA-B27 positive	1.00	0.34 to 2.90	1.00	0.55	0.12 to 2.65	0.46	0.91	0.17 to 4.86	0.91
History of coxitis	1.09	0.28 to 4.19	0.90	0.36	0.04 to 3.14	0.35	4.57	0.71 to 29.61	0.11
History of uveitis	2.26	1.04 to 4.91	0.039	1.88	0.73 to 4.81	0.19	2.69	0.62 to 11.66	0.19
BASMI, score	1.57	1.22 to 2.01	< 0.001	1.29	1.00 to 1.68	0.053	4.39	1.77 to 10.84	0.001
Lateral spinal flexion, cm	0.89	0.83 to 0.96	0.002	0.92	0.85 to 1.00	0.036	0.71	0.55 to 0.91	0.006
BASFI, score	1.14	0.95 to 1.36	0.16	1.11	0.88 to 1.40	0.40	1.35	0.97 to 1.87	0.072
BASDAI, score	1.01	0.85 to 1.21	0.91	1.01	0.82 to 1.26	0.90	1.14	0.81 to 1.61	0.45
ASDAS_CRP	1.23	0.81 to 1.86	0.34	1.19	0.73 to 1.95	0.48	1.44	0.63 to 3.32	0.39
CRP, mg/L	1.02	0.99 to 1.06	0.24	1.02	0.98 to 1.06	0.46	1.01	0.89 to 1.15	0.86
Time-averaged CRP, mg/L	1.06	1.00 to 1.12	0.060	1.05	0.98 to 1.13	0.15	1.03	0.91 to 1.16	0.65
ESR, mm/h	0.99	0.95 to 1.02	0.43	1.00	0.96 to 1.04	0.83	0.99	0.92 to 1.06	0.69
Time-averaged ESR, mm/h	0.99	0.94 to 1.03	0.60	1.00	0.94 to 1.06	0.94	1.00	0.93 to 1.09	0.93
Syndesmophytes at baseline	5.98	2.52 to 14.17	< 0.001	5.01	1.68 to 14.92	0.004	5.16	1.17 to 22.74	0.030
Aortic insufficiency ^b	1.53	0.58 to 4.04	0.40	1.11	0.31 to 4.02	0.87	2.89	0.61 to 13.69	0.18
Medication									
NSAID index, 0–100	1.01	1.00 to 1.02	0.11	1.01	1.00 to 1.02	0.11	1.00	0.97 to 1.02	0.72
Exposure to TNFi	1.07	0.48 to 2.38	0.88	0.59	0.22 to 1.62	0.31	2.83	0.67 to 11.86	0.16
Exposure to bisphosphonates	2.57	1.09 to 6.08	0.031	2.12	0.59 to 7.67	0.25	8.46	1.87 to 38.38	0.006

ORs reflect a change in one unit for continuous variables. All variables are baseline values except for time-averaged variables and medications. Significant *p* values are shown in bold typeface

ASDAS_CRP Ankylosing Spondylitis Disease Activity Score, C-reactive protein, BASDAI Bath Ankylosing Spondylitis Disease Activity Index, BASFI Bath Ankylosing Spondylitis Functional Index, BASMI Bath Ankylosing Spondylitis Metrology Index, BMI body mass index, CRP C-reactive protein, ESR erythrocyte sedimentation rate, HLA-B27 Human leukocyte antigen B27, mSASSS modified Stoke Ankylosing Spondylitis Spine Score, NSAID non-steroidal anti-inflammatory drug, TNFi tumor necrosis factor inhibitor

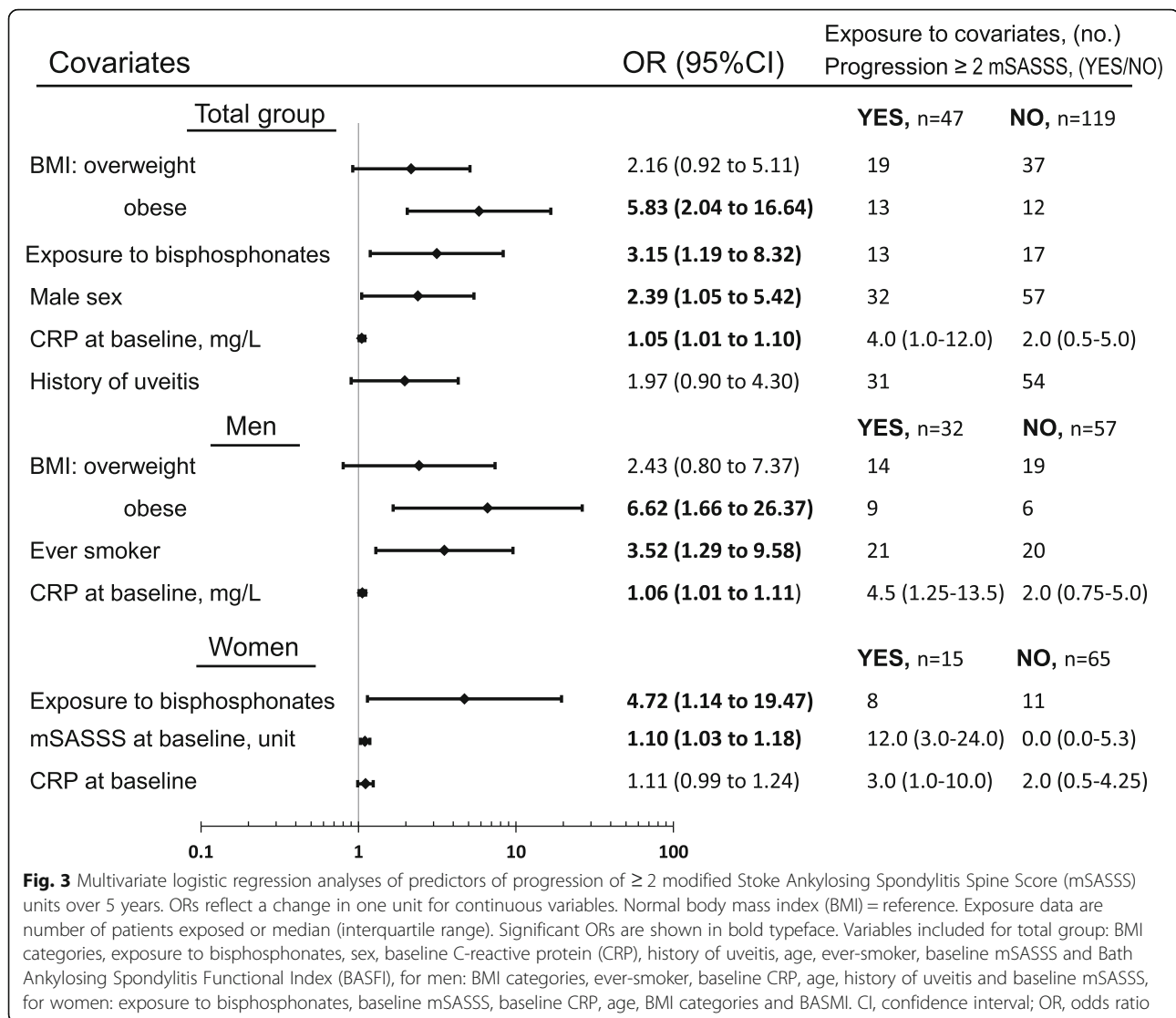
^a*n* = 120 for total group, *n* = 63 for men, *n* = 57 for women

^b*n* = 153 for total group, *n* = 83 for men and *n* = 70 for women

Discussion

In the present study, we investigated spinal radiographic progression and its predictors in men and women separately and demonstrated a higher occurrence and development of syndesmophytes in men. Shared predictors of progression in both sexes were the presence of baseline AS-related spinal radiographic alterations and obesity, whereas exposure to smoking may be a more important predictor in men and exposure to bisphosphonates may be more important in women.

The higher occurrence of AS-related spinal alterations in men has also been shown in other studies [4, 6]. Ramiro et al. also identified faster progression in men [7]. Since AS-related spinal radiological changes are more common in men, predictors should be studied separately for men and women in the same setting. To our knowledge, this has not been done previously. In one prior study in women with AS, older age, longer disease duration, severe sacroiliitis, elevated CRP and baseline syndesmophytes were predictors of the development of



new syndesmophytes in the lumbar spine over 2 years in univariate analyses. Multivariate analysis was not done due to the small sample size [28]. Several longitudinal studies on mixed gender cohorts have reported, similar to the current study, preexisting syndesmophytes as a predictor in both long-standing AS and early SpA [5, 9, 10, 25]. Elevated CRP or ESR, smoking and high disease activity over time measured by ASDAS_CRP have been independently associated with spinal radiographic progression [11, 29, 30]. Of these, high CRP and smoking were predictors of radiographic progression in men in the current Swedish cohort. The non-significant result for high CRP as a predictor in women might be due to the small sample size whereas the fact that the univariate ORs estimate indicates a negative effect of smoking on radiographic progression in men and a positive effect in women, may imply a real difference between sexes. Based on previous observations a larger sample size

would, however, have been required to have the statistical power to detect any significant difference between sexes in the effect of smoking [29]. Intriguingly, exposure to bisphosphonates during follow up was found to be a predictor of spinal radiographic progression in women. Bisphosphonates have been studied as disease-modifying drugs in AS [31–33]. One of these trials explored spinal radiographic progression and observed no difference in mSASSS progression over 2 years in patients randomized to alendronate compared with placebo [33]. However, in that study, few patients on alendronate were women and not all patients were radiographed. Our results are based on few observations and should be interpreted with caution, and our finding needs confirmation in a larger study with more women. Neither NSAID nor TNFi treatment was associated with spinal radiographic progression but the study was not designed to evaluate treatment effects. Few patients were

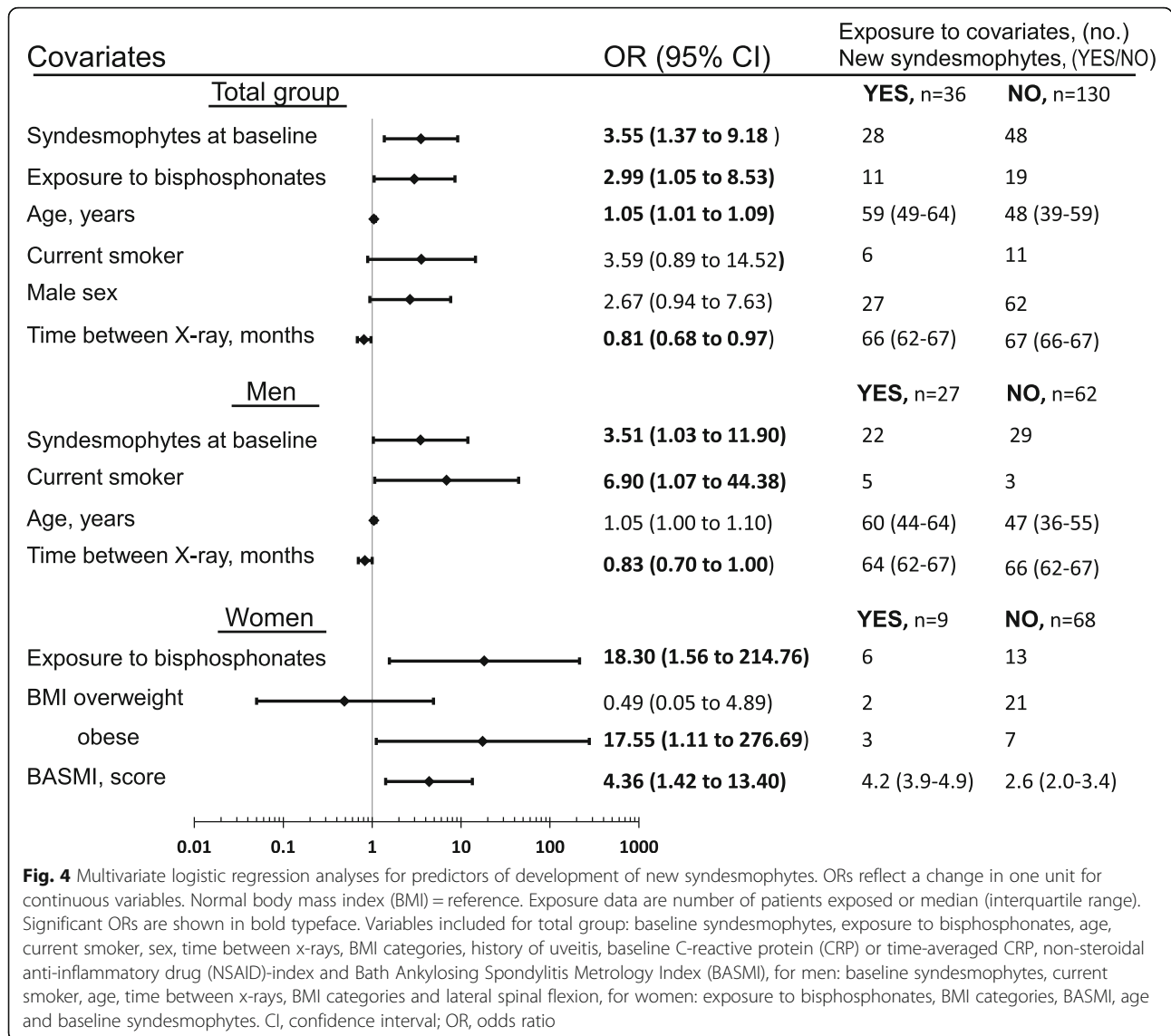


Table 4 Effect of bisphosphonates and TNFi, respectively, on spinal radiographic progression in propensity score-adjusted logistic regression analyses

	Progression ≥ 2 mSASSS units		New syndesmophytes	
	OR (95% CI)	p value	OR (95% CI)	p value
Exposure to bisphosphonates	2.47 (0.89 to 6.86)	0.083	2.96 (1.02 to 8.62)	0.046
Propensity score, 0–1	0.32 (0.03 to 3.65)	0.36	0.41 (0.03 to 5.59)	0.51
Exposure to TNFi	0.91 (0.40 to 2.08)	0.83	1.05 (0.43 to 2.52)	0.92
Propensity score, 0–1	6.26 (0.78 to 49.89)	0.084	1.18 (0.12 to 11.30)	0.89
TNFi for ≥ 2 years	0.86 (0.35 to 2.09)	0.73	0.81 (0.30 to 2.21)	0.68
Propensity score, 0–1	3.78 (0.41 to 34.593)	0.24	0.69 (0.06 to 8.46)	0.77

Significant p value is shown in bold typeface
 mSASSS modified Stoke Ankylosing Spondylitis Spinal Score, TNFi tumor necrosis factor inhibitor

Table 5 Effect of TNFi on spinal radiographic progression according to NSAID use, with and without propensity score adjustment

	Univariate OR (95% CI)	<i>p</i> value	OR (95% CI) with PS ^a	<i>p</i> value
Progression ≥ 2 mSASSS units				
TNFi vs. no TNFi and no NSAID	3.33 (0.46 to 24.05)	0.23	3.06 (0.27 to 34.70)	0.37
TNFi vs. no TNFi and low NSAID	1.24 (0.46 to 3.38)	0.67	1.16 (0.40 to 3.40)	0.79
TNFi vs. no TNFi and high NSAID	0.74 (0.17 to 3.31)	0.70	0.48 (0.09 to 2.48)	0.38
New syndesmophytes				
TNFi vs. no TNFi and no NSAID	1.25 (0.14 to 10.94)	0.84	2.51 (0.17 to 38.18)	0.51
TNFi vs. no TNFi and low NSAID	1.26 (0.42 to 3.81)	0.67	1.44 (0.44 to 4.70)	0.55
TNFi vs. no TNFi and high NSAID	1.04 (0.23 to 4.69)	0.96	0.84 (0.17 to 4.21)	0.83

BASDAI Bath Ankylosing Spondylitis Disease Activity Index, *BMI* body mass index, *CRP* C-reactive protein, *HLA-B27* Human leucocyte antigen B27, *mSASSS* modified Stoke Ankylosing Spondylitis Spine Score, *NSAID* non-steroidal anti-inflammatory drug, *PS* propensity score, *TNFi* tumor necrosis factor inhibitor

^aVariables included in PS are sex, HLA-B27, baseline CRP, BASDAI, mSASSS, smoking pack-years, BMI category, symptom duration and age of onset of symptoms

treated with TNFi, with substantial variation in treatment duration and different starting points. The PS for TNFi treatment was also based on baseline variables as variables at other starting points were not available.

Obesity was found to be a predictor of spinal radiographic progression in both sexes. A previous cross-sectional study identified higher BMI in patients with syndesmophytes, which is in line with our findings [34], whereas a recently published longitudinal study found no association with being overweight or obese and radiographic progression [35]. Obesity is associated with higher bone mineral density (BMD) in the general population, this being attributed to greater mechanical loading and hormones. Also, adipokines secreted by adipose tissue have an effect on BMD, although has not yet been fully elucidated [36]. Adipokines also have an effect on immune functions and inflammatory processes in the body [37] but the knowledge of the role of adipokines in AS is limited and conflicting. Two cross-sectional studies found elevated leptin to be associated with the presence of syndesmophytes [34, 38], whereas one longitudinal study demonstrated a protective effect of leptin against spinal radiographic progression [39] and another found elevated visfatin at baseline to predict spinal progression [40]. Mechanical loading has been shown to result in new bone formation in mice, an effect that is not yet proven in humans [41]. Ramiro et al. used a physically demanding occupation as a proxy for “life time mechanical stress” on the spine and found that blue-collar work amplified the effect of inflammation on radiographic progression [42]. Doran et al., on the other hand, found no association between AS-related radiological changes and occupational activity level in a retrospective study of patients with AS [43]. In the current study there was no association between occupation at baseline and radiographic progression.

High BASMI independently predicted the development of new syndesmophytes in women. The BASMI has to our knowledge not been studied as a predictor of

spinal radiographic progression before, but could be an interesting predictor as it is clinically more feasible than, for example, radiographic examinations. The BASMI is correlated with the mSASSS but the variables are not interchangeable [44]. Impaired spinal mobility is more influenced by inflammation in early AS and by spinal radiographic changes later in the disease [45]. We do not believe that high BASMI causes the progression but rather that it follows from a high mSASSS.

Progression of mSASSS varied considerably between patients. However, the mean progression of 1.6 mSASSS units over 5 years in the current study was lower than in previous reports on patients with long-standing AS. For instance, previous studies in three different AS cohorts with 100%, 20% and 0% of the patients treated with TNFi showed a progression of mean 1.3 mSASSS units per 2 years [46], 2.0 mSASSS units per 2 years [7, 11] and 1.3 mSASSS units per year [9], respectively. The reason for the modest mSASSS increase in the current study is not obvious, especially since the radiographic alterations at baseline were similar to those in the OASIS cohort [7, 11]. Possibly, it could be explained by differences in the selection of patients. Another factor could be the smaller proportion of men in this Swedish cohort, but not even the progression in men of 1.9 mSASSS units over 5 years was on a level with the previously reported progression rates. Osteo-proliferative changes in the present study were scored with knowledge of the serial order of acquisition of the radiographs, and reading in serial order is more sensitive to change, hence, progression should not have been underestimated [47].

The patients in the current study were recruited from rheumatology clinics and may have more severe disease. However, 70 patients (42%) among the completers had been referred to a general practitioner during follow up due to inactive disease and the percentage of patients using TNFi at baseline was similar to that in Swedish patients with AS in a nationwide register-based report from the same year (20% in our cohort vs 17% in all

Swedish patients with AS) [48]. At baseline, the patients with AS were somewhat older in the current study than the patients that declined participation, as reported previously [49]. At follow up, the completers did not differ in age or mSASSS compared with non-completers, but there was a trend toward there being more women among the completers. Even if we cannot exclude the possibility that there has been some selection bias towards older patients and women in this study, we believe that our patients are representative of patients with AS in our region.

In order to decrease radiographic progression in the spine we propose the supporting of weight loss in obese patients, counseling on the hazardous effect of smoking and treatment of active inflammation. In addition, further and larger studies on the effect of bisphosphonates on radiographic progression in the spine are needed.

One limitation of the present study is the relatively small number of patients in the subgroups, especially of women among whom few have spinal radiographic progression, and in particular the development of new syndesmophytes. This reduces the statistical power as displayed by the large confidence intervals in the results for women. Thus, the results for the subgroups, and in particular for women, need to be interpreted with caution and confirmed in a larger cohort with more women. Another limitation is the use of only one reader of the radiographs. Strengths of this study are the long follow-up time, the prospective longitudinal design with well-characterized patients and many variables identified and analyzed that have potential association with osteo-proliferation. It is also the first study reporting sex-specific predictors of spinal radiographic progression in AS.

Conclusion

Over 5 years, men had greater spinal radiographic progression than women and predictors of progression differed partly between sexes. New predictors identified were obesity in both sexes and exposure to bisphosphonates and impairment of spinal mobility in women. Among previously known predictors, baseline spinal radiographic alterations was a predictor in both sexes, high CRP was a predictor in men, with a trend in women too, whereas smoking predicted progression in men.

Abbreviations

AS: Ankylosing spondylitis; ASAS: Assessment of SpondyloArthritis international Society; ASDAS: Ankylosing Spondylitis Disease Activity Score; ASDAS_CRP: Ankylosing Spondylitis Disease Activity Score based on C-reactive protein; BASDAI: Bath Ankylosing Spondylitis Disease Activity Index; BASFI: Bath Ankylosing Spondylitis Functional Index; BAS-G: Bath Ankylosing Spondylitis Patient Global Score; BASMI: Bath Ankylosing Spondylitis Metrology Index; BMI: Body mass index; CI: Confidence interval; CRP: C-reactive protein; ESR: Erythrocyte sedimentation rate; HLA-B27: Human leukocyte antigen B27; ICC: Intraclass correlation coefficient; mSASSS: modified Stoke Ankylosing Spondylitis Spine Score;

NSAID: Non-steroid anti-inflammatory drug; OR: Odds ratio; PS: Propensity score; SD: Standard deviation; SDC: Smallest detectable change; SpA: Spondyloarthritis; TNFi: Tumor necrosis factor inhibitor

Acknowledgements

We wish to thank all the patients who participated in the study. We are grateful to the research nurses Vera Börjesson and Kerstin Larsson at Sahlgrenska University Hospital for their assistance with the patients. We also want to thank Tony Jurkiewicz and Berit Kluff at the radiology department for help with the radiographs.

Funding

This study was supported by grants from the Health and Medical Care Executive Board of the Västra Götaland, Rune and Ulla Amlövs foundation for Rheumatology Research, Göteborg's Association Against Rheumatism, The Swedish Rheumatism association, The Swedish Society of Medicine, The Göteborg Medical Society, the Region Västra Götaland (agreement concerning research and education of doctors), Controlling Chronic Inflammatory Diseases with Combined Efforts (COMBINE), and the Margareta Rheuma research foundation.

Availability of data and materials

The data sets analyzed during the current study are not publicly available due to Swedish legislation (the Personal Data Act), but a limited and fully anonymized data set that supports the main analyses is available from the corresponding author on request.

Authors' contributions

AD participated in acquisition, analysis and interpretation of data and drafting the manuscript. EK participated in the design of the study and acquisition, analysis and interpretation of data. MG and JG participated in acquisition and interpretation of data. MH and ER participated in acquisition of data. HC participated in the conception and design of the work. LTJ participated in drafting the manuscript and interpretation of data. HFd'E participated in the conception and design of the work, acquisition, analysis and interpretation of data and drafting the manuscript. All authors critically reviewed the manuscript and approved the final version to be published.

Ethics approval and consent to participate

The study was approved by the regional ethics committee in Gothenburg, Sweden (reference numbers Dnr 597-08 and Dnr 690-13) and was performed in accordance with the Helsinki declaration. All participants gave their written informed consent.

Consent for publication

Not applicable.

Competing interests

MG has received consultancy fees from Pfizer and Novartis, outside the submitted work. LTJ has received Advisory Board Fees from Novartis, Celgene and MSD, outside the submitted work. HFd'E has received Advisory Board Fees from Sandoz, Novartis and Abbvie and an unrestricted grant from Novartis, outside the submitted work. AD, EK, JG, MH, ER and HC report no competing interests.

Publisher's Note

Springer Nature remains neutral with regard to jurisdictional claims in published maps and institutional affiliations.

Author details

¹Department of Rheumatology and Inflammation Research, Sahlgrenska Academy at University of Gothenburg, Box 480, 405 30 Gothenburg, Sweden. ²Department of Radiology, Skåne University Hospital, 221 85 Lund, Sweden. ³Faculty of Medicine, Lund University, Box 117, 221 00 Lund, Sweden. ⁴Department of Radiology, Sahlgrenska University Hospital, Mölndal, 431 80 Mölndal, Sweden. ⁵Section of Rheumatology, Södra Älvsborg Hospital, 501 82 Borås, Sweden. ⁶Section of Rheumatology, Alingsås Hospital, 441 33 Alingsås, Sweden. ⁷Department of Public Health and Clinical Medicine, Rheumatology, 901 87 Umeå University, Umeå, Sweden.

Received: 23 February 2018 Accepted: 10 July 2018

Published online: 03 August 2018

References

- Braun J, Sieper J. Ankylosing spondylitis. *Lancet*. 2007;369(9570):1379–90.
- Lee W, Reveille JD, Weisman MH. Women with ankylosing spondylitis: a review. *Arthritis Care Res (Hoboken)*. 2008;59(3):449–54.
- Wanders AJ, Landewe RB, Spoorenberg A, Dougados M, van der Linden S, Mielants H, et al. What is the most appropriate radiologic scoring method for ankylosing spondylitis? A comparison of the available methods based on the Outcome Measures in Rheumatology Clinical Trials filter. *Arthritis Rheum*. 2004;50(8):2622–32.
- Lee W, Reveille JD, Davis JC Jr, Learch TJ, Ward MM, Weisman MH. Are there gender differences in severity of ankylosing spondylitis? Results from the PSOAS cohort. *Ann Rheum Dis*. 2007;66(5):633–8.
- van Tubergen A, Ramiro S, van der Heijde D, Dougados M, Mielants H, Landewe R. Development of new syndesmophytes and bridges in ankylosing spondylitis and their predictors: a longitudinal study. *Ann Rheum Dis*. 2012;71(4):518–23.
- Webers C, Essers I, Ramiro S, Stolwijk C, Landewe R, van der Heijde D, et al. Gender-attributable differences in outcome of ankylosing spondylitis: long-term results from the outcome in ankylosing spondylitis international study. *Rheumatology (Oxford)*. 2016;55(3):419–28.
- Ramiro S, Stolwijk C, van Tubergen A, van der Heijde D, Dougados M, van den Bosch F, et al. Evolution of radiographic damage in ankylosing spondylitis: a 12 year prospective follow-up of the OASIS study. *Ann Rheum Dis*. 2015;74(1):52–9.
- Baraliakos X, Listing J, Rudwaleit M, Haibel H, Brandt J, Sieper J, et al. Progression of radiographic damage in patients with ankylosing spondylitis: defining the central role of syndesmophytes. *Ann Rheum Dis*. 2007;66(7):910–5.
- Baraliakos X, Listing J, von der Recke A, Braun J. The natural course of radiographic progression in ankylosing spondylitis - evidence for major individual variations in a large proportion of patients. *J Rheumatol*. 2009;36(5):997–1002.
- Poddubnyy D, Haibel H, Listing J, Marker-Hermann E, Zeidler H, Braun J, et al. Baseline radiographic damage, elevated acute-phase reactant levels, and cigarette smoking status predict spinal radiographic progression in early axial spondylarthritis. *Arthritis Rheum*. 2012;64(5):1388–98.
- Ramiro S, van der Heijde D, van Tubergen A, Stolwijk C, Dougados M, van den Bosch F, et al. Higher disease activity leads to more structural damage in the spine in ankylosing spondylitis: 12-year longitudinal data from the OASIS cohort. *Ann Rheum Dis*. 2014;73(8):1455–61.
- Poddubnyy D, Protopopov M, Haibel H, Braun J, Rudwaleit M, Sieper J. High disease activity according to the ankylosing spondylitis disease activity score is associated with accelerated radiographic spinal progression in patients with early axial spondylarthritis: results from the German SPondylarthritis inception cohort. *Ann Rheum Dis*. 2016;75(12):2114–8.
- Klingberg E, Lorentzon M, Mellstrom D, Geijer M, Gothlin J, Hilme E, et al. Osteoporosis in ankylosing spondylitis - prevalence, risk factors and methods of assessment. *Arthritis Res Ther*. 2012;14(3):12.
- van der Linden S, Valkenburg HA, Cats A. Evaluation of diagnostic criteria for ankylosing spondylitis. A proposal for modification of the New York criteria. *Arthritis Rheum*. 1984;27(4):361–8.
- Jenkinson TR, Mallorie PA, Whitelock HC, Kennedy LG, Garrett SL, Calin A. Defining spinal mobility in ankylosing spondylitis (AS). The Bath AS Metrology Index. *J Rheumatol*. 1994;21(9):1694–8.
- Garrett S, Jenkinson T, Kennedy LG, Whitelock H, Gaisford P, Calin A. A new approach to defining disease status in ankylosing spondylitis: the bath ankylosing spondylitis disease activity index. *J Rheumatol*. 1994;21(12):2286–91.
- Calin A, Garrett S, Whitelock H, Kennedy LG, O'Hea J, Mallorie P, et al. A new approach to defining functional ability in ankylosing spondylitis: the development of the bath ankylosing spondylitis functional index. *J Rheumatol*. 1994;21(12):2281–5.
- Jones SD, Steiner A, Garrett SL, Calin A. The bath ankylosing spondylitis patient global score (BAS-G). *Br J Rheumatol*. 1996;35(1):66–71.
- Lukas C, Landewe R, Sieper J, Dougados M, Davis J, Braun J, et al. Development of an ASAS-endorsed disease activity score (ASDAS) in patients with ankylosing spondylitis. *Ann Rheum Dis*. 2009;68(1):18–24.
- Niknian M, A LL, Lasater TM, Carleton RA. Use of population-based data to assess risk factor profiles of blue and white collar workers. *J Occup Environ Med*. 1991;33(1):29–36.
- Seidell JC, Flegal KM. Assessing obesity: classification and epidemiology. *Br Med Bull*. 1997;53(2):238–52.
- Dougados M, Simon P, Braun J, Burgos-Vargas R, Maksymowych WP, Sieper J, et al. ASAS recommendations for collecting, analysing and reporting NSAID intake in clinical trials/epidemiological studies in axial spondylarthritis. *Ann Rheum Dis*. 2011;70(2):249–51.
- Klingberg E, Svealv BG, Tang MS, Bech-Hanssen O, Forsblad-d'Elia H, Bergfeldt L. Aortic regurgitation is common in ankylosing spondylitis: time for routine echocardiography evaluation? *Am J Med*. 2015;128(11):1244–1250.e1241.
- Creemers MC, Franssen MJ, van't Hof MA, Gribnau FW, van de Putte LB, van Riel PL. Assessment of outcome in ankylosing spondylitis: an extended radiographic scoring system. *Ann Rheum Dis*. 2005;64(1):127–9.
- Baraliakos X, Listing J, Rudwaleit M, Haibe H, Sieper J, Braun J. Progression of radiographic damage in patients with ankylosing spondylitis - defining the central role of syndesmophytes. *Ann Rheum Dis*. 2007;66:85.
- Koo TK, Li MY. A guideline of selecting and reporting Intraclass correlation coefficients for reliability research. *J Chiropr Med*. 2016;15(2):155–63.
- Bruynesteyn K, Boers M, Kostense P, van der Linden S, van der Heijde D. Deciding on progression of joint damage in paired films of individual patients: smallest detectable difference or change. *Ann Rheum Dis*. 2005;64(2):179–82.
- Kang KY, Kwok SK, Ju JH, Park KS, Park SH, Hong YS. The predictors of development of new syndesmophytes in female patients with ankylosing spondylitis. *Scand J Rheumatol*. 2015;44(2):125–8.
- Poddubnyy D, Haibel H, Listing J, Marker-Hermann E, Zeidler H, Braun J, et al. Cigarette smoking has a dose-dependent impact on progression of structural damage in the spine in patients with axial spondylarthritis: results from the German SPondylarthritis inception cohort (GESPIC). *Ann Rheum Dis*. 2013;72(8):1430–2.
- Poddubnyy D, Halibel H, Listing J, Märker-Hermann E, Zeidler H, Braun J, et al. Cigarette smoking has a dose-dependent impact on progression of structural damage in the spine in patients with axial spondylarthritis: results from the German SPondylarthritis Inception Cohort (GESPIC). *Ann Rheum Dis*. 2013;72(8):1430–2.
- Maksymowych WP, Jhangri GS, Fitzgerald AA, LeClercq S, Chiu P, Yan A, et al. A six-month randomized, controlled, double-blind, dose-response comparison of intravenous pamidronate (60 mg versus 10 mg) in the treatment of nonsteroidal antiinflammatory drug-refractory ankylosing spondylitis. *Arthritis Rheum*. 2002;46(3):766–73.
- Viapiana O, Gatti D, Idolazzi L, Fracassi E, Adami S, Troplini S, et al. Bisphosphonates vs infliximab in ankylosing spondylitis treatment. *Rheumatology (Oxford)*. 2014;53(1):90–4.
- Coates L, Packham JC, Creamer P, Hailwood S, Bhalla AS, Chakravarty K, et al. Clinical efficacy of oral alendronate in ankylosing spondylitis: a randomised placebo-controlled trial. *Clin Exp Rheumatol*. 2017;35(3):445–51.
- Kim KJ, Kim JY, Park SJ, Yoon H, Yoon CH, Kim WU, et al. Serum leptin levels are associated with the presence of syndesmophytes in male patients with ankylosing spondylitis. *Clin Rheumatol*. 2012;31(8):1231–8.
- Molnar C, Scherer A, Baraliakos X, de Hooge M, Micheroli R, Exer P, et al. TNF blockers inhibit spinal radiographic progression in ankylosing spondylitis by reducing disease activity: results from the Swiss clinical quality management cohort. *Ann Rheum Dis*. 2018;77(1):63–9.
- Shapses SA, Sukumar D. Bone metabolism in obesity and weight loss. *Annu Rev Nutr*. 2012;32:287–309.
- Tilg H, Moschen AR. Adipocytokines: mediators linking adipose tissue, inflammation and immunity. *Nat Rev Immunol*. 2006;6(10):772–83.
- Gonzalez-Lopez L, Fajardo-Robledo NS, Miriam Saldana-Cruz A, Moreno-Sandoval IV, Bonilla-Lara D, Zavaleta-Muniz S, et al. Association of adipokines, interleukin-6, and tumor necrosis factor- α concentrations with clinical characteristics and presence of spinal syndesmophytes in patients with ankylosing spondylitis: a cross-sectional study. *J Int Med Res*. 2017;45(3):1024–35.
- Hartl A, Sieper J, Syrbe U, Listing J, Hermann KG, Rudwaleit M, et al. Serum levels of leptin and high molecular weight adiponectin are inversely associated with radiographic spinal progression in patients with ankylosing spondylitis: results from the ENRADAS trial. *Arthritis Res Ther*. 2017;19(1):140.
- Syrbe U, Callhoff J, Conrad K, Poddubnyy D, Haibel H, Junker S, et al. Serum adipokine levels in patients with ankylosing spondylitis and their

- relationship to clinical parameters and radiographic spinal progression. *Arthritis & rheumatology* (Hoboken, NJ). 2015;67(3):678–85.
41. Jacques P, Lambrecht S, Verheugen E, Pauwels E, Kollias G, Armaka M, et al. Proof of concept: enthesitis and new bone formation in spondyloarthritis are driven by mechanical strain and stromal cells. *Ann Rheum Dis*. 2014; 73(2):437–45.
 42. Ramiro S, Landewé R, van Tubergen A, Boonen A, Stolwijk C, Dougados M et al. Lifestyle factors may modify the effect of disease activity on radiographic progression in patients with ankylosing spondylitis: a longitudinal analysis. *RMD Open*. 2015;1:e000153.
 43. Doran MF, Brophy S, MacKay K, Taylor G, Calin A. Predictors of longterm outcome in ankylosing spondylitis. *J Rheumatol*. 2003;30(2):316–20.
 44. Wanders A, Landewe R, Dougados M, Mielants H, van der Linden S, van der Heijde D. Association between radiographic damage of the spine and spinal mobility for individual patients with ankylosing spondylitis: can assessment of spinal mobility be a proxy for radiographic evaluation? *Ann Rheum Dis*. 2005;64(7):988–94.
 45. Machado P, Landewé R, Braun J, Hermann K-GA, Baker D, van der Heijde D. Both structural damage and inflammation of the spine contribute to impairment of spinal mobility in patients with ankylosing spondylitis. *Ann Rheum Dis*. 2010;69(8):1465–70.
 46. Maas F, Spoorenberg A, Brouwer E, Bos R, Efde M, Chaudhry RN, et al. Spinal radiographic progression in patients with ankylosing spondylitis treated with TNF-alpha blocking therapy: a prospective longitudinal observational cohort study. *PLoS One*. 2015;10(4):e0122693.
 47. Wanders A, Landewe R, Spoorenberg A, de Vlam K, Mielants H, Dougados M, et al. Scoring of radiographic progression in randomised clinical trials in ankylosing spondylitis: a preference for paired reading order. *Ann Rheum Dis*. 2004;63(12):1601–4.
 48. Exarchou S, Lindstrom U, Askling J, Eriksson JK, Forsblad-d'Elia H, Neovius M, et al. The prevalence of clinically diagnosed ankylosing spondylitis and its clinical manifestations: a nationwide register study. *Arthritis Res Ther*. 2015; 17:118.
 49. Klingberg E, Geijer M, Gothln J, Mellstrom D, Lorentzon M, Hilme E, et al. Vertebral fractures in ankylosing spondylitis are associated with lower bone mineral density in both central and peripheral skeleton. *J Rheumatol*. 2012; 39(10):1987–95.

Ready to submit your research? Choose BMC and benefit from:

- fast, convenient online submission
- thorough peer review by experienced researchers in your field
- rapid publication on acceptance
- support for research data, including large and complex data types
- gold Open Access which fosters wider collaboration and increased citations
- maximum visibility for your research: over 100M website views per year

At BMC, research is always in progress.

Learn more biomedcentral.com/submissions

