

CORRECTION

Open Access



# Correction to: A nurse-led health coaching intervention for stroke survivors and their family caregivers in hospital to home transition care in Chongqing, China: a study protocol for a randomized controlled trial

Shuanglan Lin, Lily Dongxia Xiao\* and Diane Chamberlain

**Correction to:** *Trials* 21, 240 (2020)

<https://doi.org/10.1186/s13063-020-4156-z>

After publication of our article [1] the authors have notified us of inconsistencies between figures and figure legends: Figure 1: the legend is correct; the figure should be current Figure 2. Figure 2: the legend is correct; the figure should be current Figure 3. Figure 3: the legend is correct; the figure should be current Figure 1. Correct Figures and Legends are presented below:

---

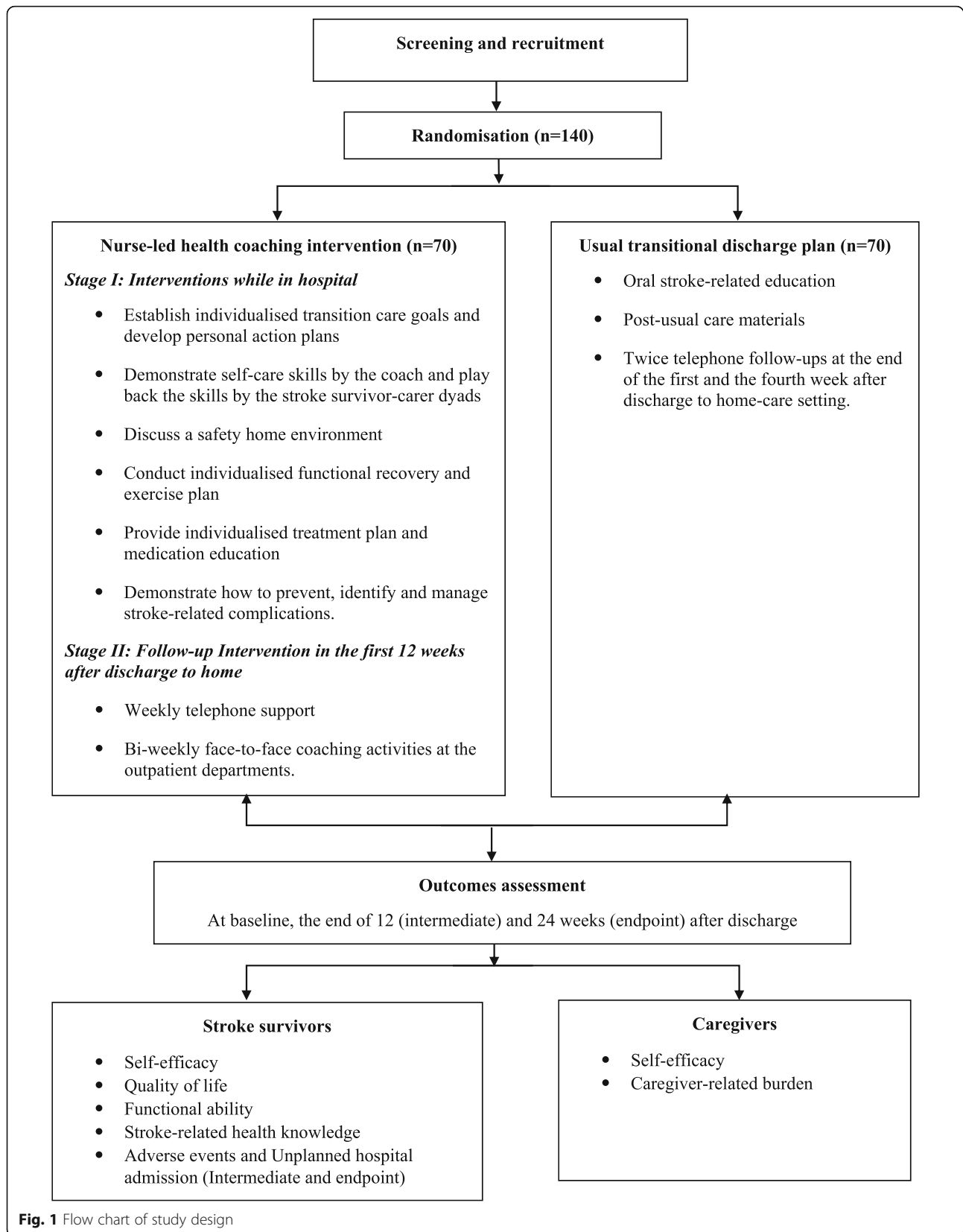
The original article can be found online at <https://doi.org/10.1186/s13063-020-4156-z>.

\* Correspondence: [lily.xiao@flinders.edu.au](mailto:lily.xiao@flinders.edu.au)

College of Nursing and Health Sciences, Flinders University, GPO Box 2100, Adelaide, SA 5001, Australia

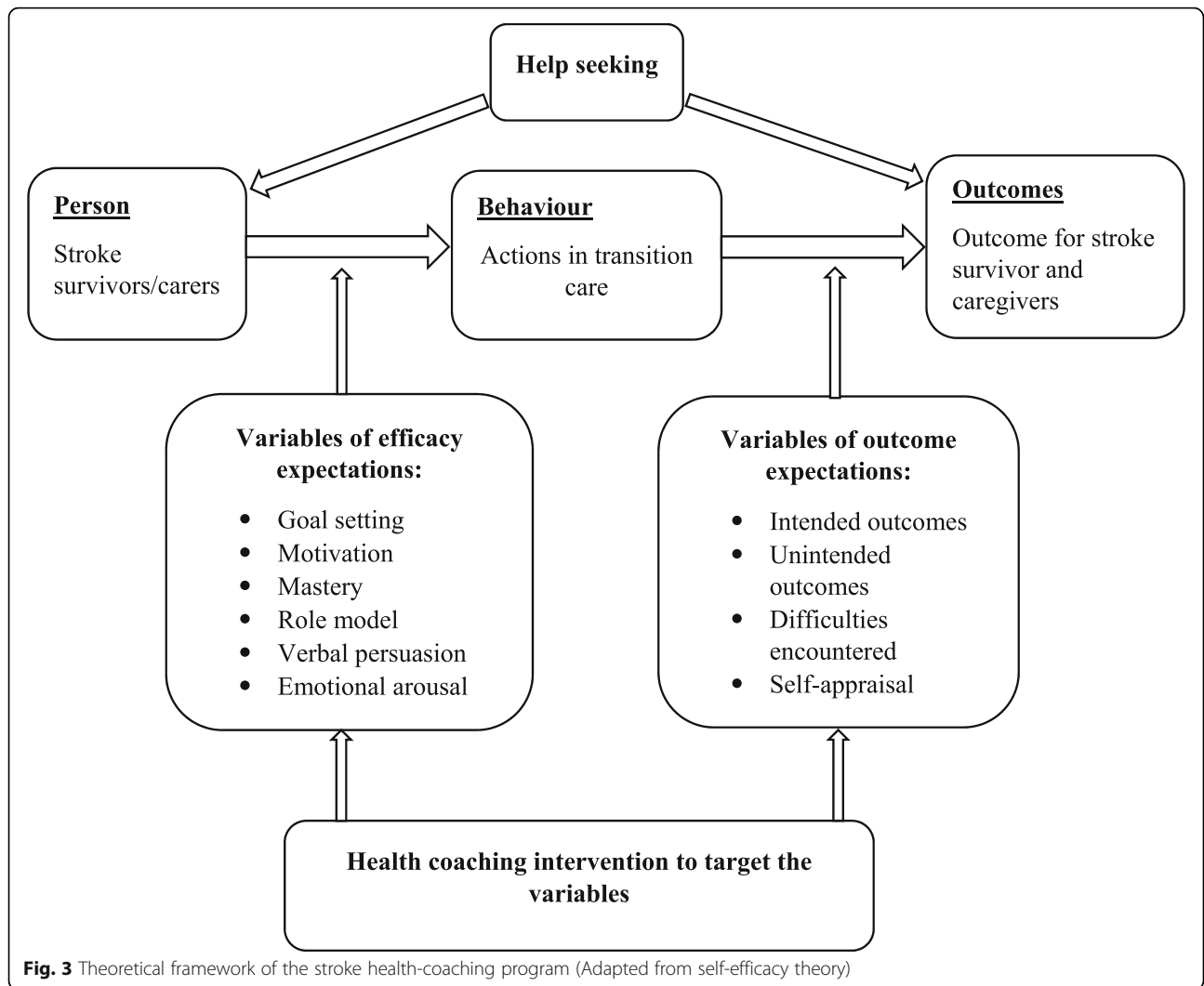


© The Author(s). 2020 **Open Access** This article is licensed under a Creative Commons Attribution 4.0 International License, which permits use, sharing, adaptation, distribution and reproduction in any medium or format, as long as you give appropriate credit to the original author(s) and the source, provide a link to the Creative Commons licence, and indicate if changes were made. The images or other third party material in this article are included in the article's Creative Commons licence, unless indicated otherwise in a credit line to the material. If material is not included in the article's Creative Commons licence and your intended use is not permitted by statutory regulation or exceeds the permitted use, you will need to obtain permission directly from the copyright holder. To view a copy of this licence, visit <http://creativecommons.org/licenses/by/4.0/>. The Creative Commons Public Domain Dedication waiver (<http://creativecommons.org/publicdomain/zero/1.0/>) applies to the data made available in this article, unless otherwise stated in a credit line to the data.



TIME POINT	Study period				
	Enrolment		Allocation	Post-allocation (Discharge to home-setting)	
	Before intervention	Baseline data collection	Start of intervention	12 weeks after discharge to home-setting	24 weeks after discharge to home-setting
<b>ENROLMENT</b>					
Eligibility screen	×				
Informed consent	×				
Allocation			×		
<b>INTERVENTION</b>					
Nurse-led health coaching intervention			×	×	×
Usual transitional discharge plan			×	×	×
<b>ASSESSMENT</b>					
<b>Stroke survivors</b>					
1. Self-efficacy		×		×	×
2. Quality of life		×		×	×
3. Functional ability		×		×	×
4. Stroke-related health knowledge		×		×	×
5. Adverse events					×
6. Unplanned hospital admission					×
<b>Caregivers</b>					
1. Self-efficacy		×		×	×
2. Caregiver-related burden		×		×	×

**Fig. 2** SPIRIT figure: general procedure of enrolment, intervention and assessment



Published online: 05 August 2020

**Reference**

1. Lin, et al. A nurse-led health coaching intervention for stroke survivors and their family caregivers in hospital to home transition care in Chongqing, China: a study protocol for a randomized controlled trial. *Trials*. 2020;21:240. <https://doi.org/10.1186/s13063-020-4156-z>.