

RESEARCH

Open Access



Host age structure reshapes parasite symbiosis: collaboration begets pathogens, competition begets virulent mutualists

Carsten O. S. Portner¹, Edward G. Rong¹, Jared A. Ramirez¹, Yuri I. Wolf², Angeliq P. Bosse¹, Eugene V. Koonin² and Nash D. Rochman^{2*}

Abstract

Background: Symbiotic relationships are ubiquitous in the biosphere. Inter-species symbiosis is impacted by intra-specific distinctions, in particular, those defined by the age structure of a population. Older individuals compete with younger individuals for resources despite being less likely to reproduce, diminishing the fitness of the population. Conversely, however, older individuals can support the reproduction of younger individuals, increasing the population fitness. Parasitic relationships are commonly age structured, typically, more adversely affecting older hosts.

Results: We employ mathematical modeling to explore the differential effects of collaborative or competitive host age structures on host-parasite relationships. A classical epidemiological compartment model is constructed with three disease states: susceptible, infected, and recovered. Each of these three states is partitioned into two compartments representing young, potentially reproductive, and old, post-reproductive, hosts, yielding 6 compartments in total. In order to describe competition and collaboration between old and young compartments, we model the reproductive success to depend on the fraction of young individuals in the population. Collaborative populations with relatively greater numbers of post-reproductive hosts enjoy greater reproductive success whereas in purely competitive populations, increasing the post-reproductive subpopulation reduces reproductive success.

Conclusions: We demonstrate that, in collaborative host populations, pathogens strictly impacting older, post-reproductive individuals can reduce population fitness even more than pathogens that directly impact younger, potentially reproductive individuals. In purely competitive populations, the reverse is observed, and we demonstrate that endemic, virulent pathogens can oxymoronically form a mutualistic relationship with the host, increasing the fitness of the host population. Applications to endangered species conservation and invasive species containment are discussed.

Keywords: Virulence, Mutualism, Age structure, Epidemic compartment model, Host–pathogen interactions

Background

Despite having acquired a positive connotation when used informally, the term “symbiosis” may refer to any sustained inter- (but not intra-) species relationship [1]. This relationship can be mutualistic (beneficial for all species involved), commensal (beneficial or neutral for all species), or parasitic (beneficial for some and deleterious for others) as well as obligate or facultative (beneficial but not required for survival). The diversity of inter-species

*Correspondence: nash.rochman@nih.gov

² National Center for Biotechnology Information, National Library of Medicine, Bethesda, MD 20894, USA
Full list of author information is available at the end of the article



© The Author(s) 2022. **Open Access** This article is licensed under a Creative Commons Attribution 4.0 International License, which permits use, sharing, adaptation, distribution and reproduction in any medium or format, as long as you give appropriate credit to the original author(s) and the source, provide a link to the Creative Commons licence, and indicate if changes were made. The images or other third party material in this article are included in the article's Creative Commons licence, unless indicated otherwise in a credit line to the material. If material is not included in the article's Creative Commons licence and your intended use is not permitted by statutory regulation or exceeds the permitted use, you will need to obtain permission directly from the copyright holder. To view a copy of this licence, visit <http://creativecommons.org/licenses/by/4.0/>. The Creative Commons Public Domain Dedication waiver (<http://creativecommons.org/publicdomain/zero/1.0/>) applies to the data made available in this article, unless otherwise stated in a credit line to the data.

symbioses is broadened still by intra-species diversity such that the nature of the symbiosis varies among individuals within each species. Pathogenic (that is, involved in strongly asymmetric, parasitic relationships [2]) human viruses provide well-characterized examples. For almost all pathogenic viruses, a period of host immunity follows infection, compartmentalizing the population into two groups, only one of which would engage in symbiosis with the virus [3]. For common viruses that confer lifelong immunity following initial infection (or vaccination), these two groups can often be well approximated by age whereby young individuals who have never been exposed are susceptible to infection and older individuals, who were most likely exposed when they were themselves younger, are immune.

Indeed, the age structure of human populations plays an important role in forecasting the impact of novel pathogens because, even among apparently susceptible hosts, increased age may be a predictor of increased [4, 5] or decreased [5, 6] morbidity and mortality. Senescence has been observed in all major branches of the tree of life, from animals [7, 8] and plants [9] to yeast [10] and bacteria [11]. Senescent members are inherently costly to the population as they consume shared resources but reproduce with reduced (down to zero) efficiency. However, senescent individuals also can increase the overall growth rate of populations if they increase the efficiency with which other members reproduce. In select animals, mainly mammals, individuals frequently live beyond their reproductive lifespans, with females living for many years post menopause [12]. Such collaborative populations foster selection for post-reproductive lifespans, commonly

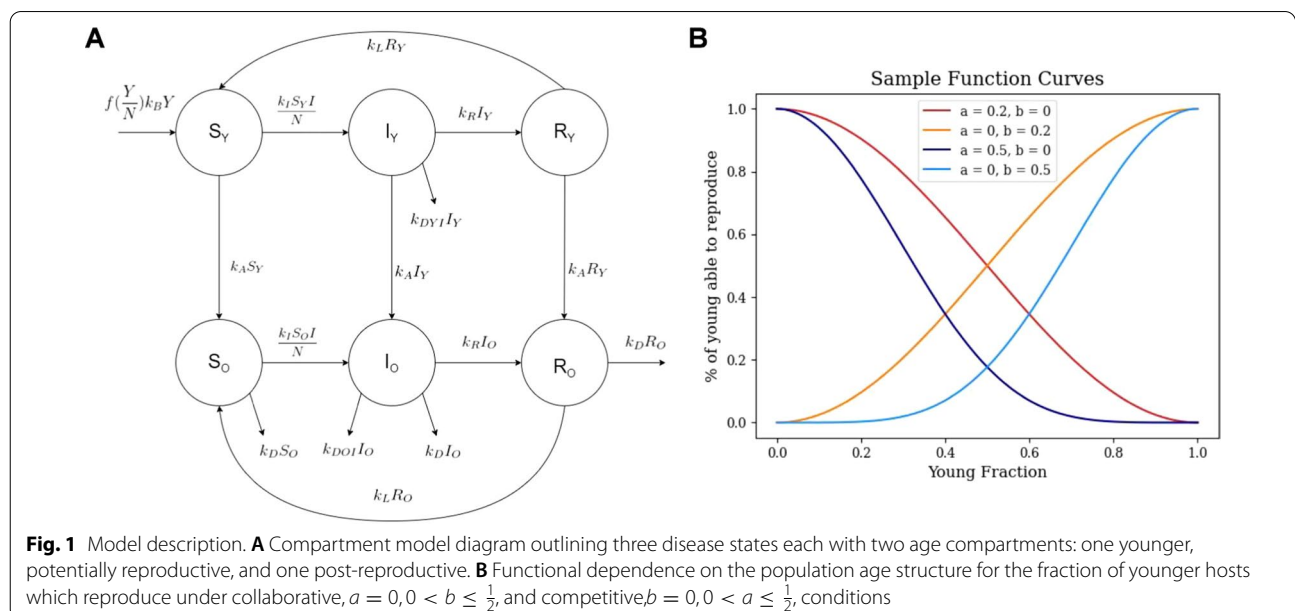
referred to as “the grandmother hypothesis,” best demonstrated among humans [13–15] and orca whales [16].

In this work, we sought to explore the impact of host age-structure dynamics on the introduction of a pathogen with age-dependent virulence. We consider two diverse host populations: a competitive population modelled after rotifers [17, 18] (as well as an additional case modelled after solitary bees [19, 20] with qualitatively similar behavior addressed in the supplement) and a collaborative population modelled after humans. We demonstrate that, in competitive populations, a virulent pathogen can paradoxically increase the population growth rate. Conversely, in collaborative populations, the loss of a single post-reproductive member due to infection can result in a growth rate drop exceeding that resulting from the loss of a single reproductive member.

Results

Model construction

A classical epidemiological compartment model (Fig. 1A) was constructed with three disease states: susceptible, infected, and recovered. Each of these three states is partitioned into two compartments representing young, potentially reproductive, and old, post-reproductive, hosts, yielding 6 compartments in total. All hosts are born susceptible (at rate k_B) to infection; age into the post-reproductive compartment (at rate k_A); and die from causes unrelated to infection (at rate k_D). Susceptible hosts may become infected (proportional to rate k_I) and recover or die due to infection (at rate k_R or the age-specific rates k_{DYI} or k_{DOI} respectively). Recovered hosts can lose immunity and return to a susceptible compartment



(at rate k_L). For each population, the birth rate, death rate, and rate of aging from young to old compartments were fixed across all simulations (for a complete list of all parameters, see Table 1).

In order to model competition and collaboration between old and young compartments, we sought to make the reproductive success (which may represent the fraction of young hosts which are fertile or the probability that a birth will result in viable offspring) dependent on the proportion of the young individuals in the population, $\frac{Y}{Y+O}$, where Y and O are the cumulative sizes of all young and old compartments, respectively. First let us consider a collaborative population. In the limiting case where all but a single host (or mating pair) is post-reproductive, and aiding in the reproduction of that single host, we assume 100% reproductive success. The more collaborative the population, or conversely the greater the degree to which young hosts depend on post-reproductive hosts, the more steeply the reproductive success declines with relatively fewer post-reproductive hosts. Under conditions without any post-reproductive hosts, we assume the limiting case where the reproductive success is zero. We further assume this behavior saturates with respect to either limit.

The converse argument applies to competitive populations: reproductive success is inversely proportional to the relative number of post-reproductive hosts. Although cooperation and competition are not necessarily strictly symmetrical, for formal convenience, we considered the family of functions:

$$f\left(\frac{Y}{Y+O}\right) = \cos^{10a}\left(\frac{\pi}{2}\frac{Y}{Y+O}\right)\sin^{10b}\left(\frac{\pi}{2}\frac{Y}{Y+O}\right)$$

where $a = 0, 0 < b \leq \frac{1}{2}$ and $b = 0, 0 < a \leq \frac{1}{2}$ represent competitive and collaborative populations, respectively (Fig. 1B), which possess the properties described above. One consequence of this symmetrical construction is that any competition among young hosts is implicitly neutral with respect to the average reproductive success of the entire young host population (see Discussion). We also

emphasize that competition between parameter regimes is not assessed in this work. Only the relative fitness of disease free and endemic equilibria are considered.

Each simulation was conducted as follows. Parameters a and b were selected and the equilibrium age distribution, $\frac{Y}{Y+O}$, as well as the exponential growth rate, $\frac{dN/dt}{N}$ where N is the cumulative size of all compartments, were computed (for details, see Extended Data A). Compartments are initialized to respect the equilibrium age distribution, with infected compartments initialized to be 0.1% of the total population. The solution is then propagated using Python scipy method `solve_ivp` until a state of endemic equilibrium is reached where the measured rate of change of compartment proportions is negligible. The new growth rate at endemic equilibrium is then computed. For details, see Extended Data B.

This construction, resulting in exponential growth in both disease-free and endemic equilibrium, assumes that the population is far from the carrying capacity of the environment. Under these conditions, competition between individuals for the resources necessary for survival can still occur when such resources are non-uniformly spatially distributed. We emphasize, however, that in the model presented, there is no competition among individuals for survival, only for the potential to reproduce. Even in well-mixed environments with abundant resources, competitive age-structures can impact reproductive success. For example, old hosts can cannibalize young hosts or, for sexually reproducing species, increasing the density of post-reproductive hosts results in increased time required to locate a mate.

Loss of post-reproductive hosts is costly for collaborative populations

A human population was modelled consistent with an average reproductive life span of 25 years; post-reproductive life span of 45 years; a birth rate of 0.14 births/year; and reproductive success determined by $a = \{0.1, 0.2, 0.3, 0.4, 0.5\}$. The pathogen was modelled with an infectivity (the product of the rate of host contact and the probability of

Table 1 Complete list of parameters

	Human	Rotifer	Sweat Bee
Rate of infection	2 week ⁻¹	4 days ⁻¹	1.9 weeks ⁻¹
Rate of recovery	0.5 week ⁻¹	0.059 days ⁻¹	0.06 weeks ⁻¹
Rate of loss of immunity	1 years ⁻¹	0.059 days ⁻¹	0.06 weeks ⁻¹
Birth rate	0.14 years ⁻¹	1.3 days ⁻¹	1.5 weeks ⁻¹
Aging rate	0.04 years ⁻¹	0.125 days ⁻¹	0.14 weeks ⁻¹
Post-reproductive death rate	0.022 years ⁻¹	0.11 days ⁻¹	0.14 weeks ⁻¹
Post-reproductive infection death rate	0.25 years ⁻¹	0.33 days ⁻¹	1.4 weeks ⁻¹

infection given contact) of 2/week, mean duration of infection 2 weeks, and mean duration of immunity 1 year for all hosts, but a probability of death roughly 1% for old hosts and zero for young hosts. These parameters well represent a range of human respiratory viruses [21] but we note this model does not account for the complex behavior associated with time varying contact rates [22, 23]. The epidemic trajectory for $a = 0.2$ is shown in Fig. 2A.

Due to the loss of old hosts as a result of infection, the young fraction of the population increases throughout the epidemic phase and into endemity (Fig. 2B). In every case, the growth rate substantially declines (and can become negative) during the epidemic phase before gradually increasing (subject to oscillations) to a value reduced relative to the pre-epidemic level (Fig. 2C). The cost to the population (decreased growth rate) as a result of endemic infection is greater for more collaborative populations (larger a , Fig. 2D).

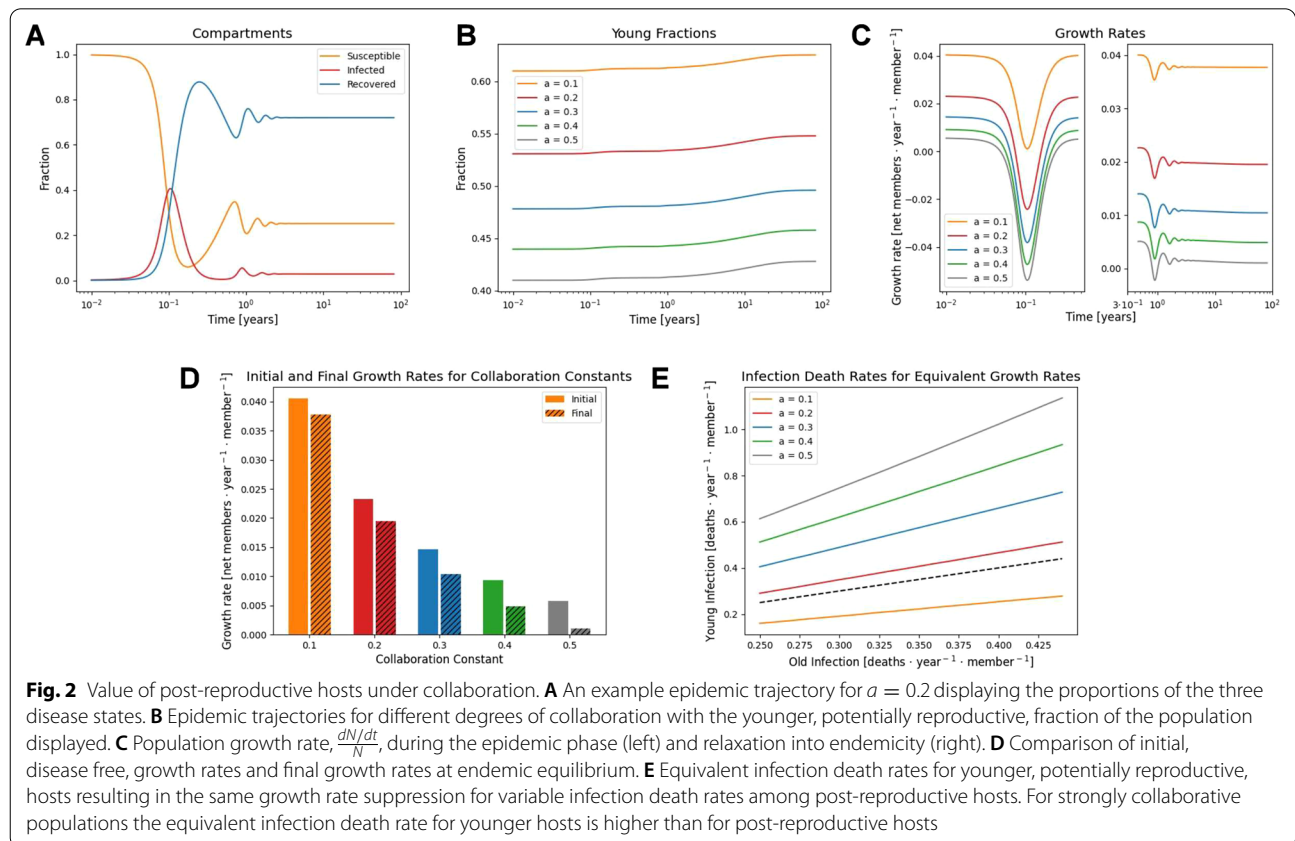
Death rate due to infection was then varied, ranging from 0.25/year to 0.45/year among old hosts, remaining at zero for young hosts. For each final growth rate, the equivalent death rate due to infection under conditions where only young hosts die as a result of infection was computed such that the final growth rate attained was

the same for both models. Under sufficiently collaborative conditions, $a \geq 0.2$, the equivalent death rate among young hosts resulting in the same growth rate reduction was greater than that among old hosts (Fig. 2E). In other words, in a highly collaborative population, the cost of the loss of a post-reproductive member due to infection is greater than the cost of the loss of a young, potentially reproductive member.

The relative cost of losing young vs. post-reproductive hosts depends on the reproductive success function, $f\left(\frac{Y}{Y+O}\right)$. When reproductive success remains near one until $\frac{Y}{Y+O}$ approaches one and then sharply declines, representing the case where the population is insensitive to the abundance of post-reproductive hosts, the loss of a young host always has a greater impact than the loss of a post-reproductive host (see Additional file 1: Fig. S1).

Virulent mutualism in competitive populations

A competitive population was modelled using the data available for rotifer populations, with an average reproductive life span of 8 days; post-reproductive life span of 9 days; a birth rate of 1.3/day [17]; and reproductive success determined by $b = \{0.1, 0.2, 0.3, 0.4, 0.5\}$. The



pathogen was modelled with an infectivity of 4/day, mean duration of infection 3 days, and mean duration of immunity 17 days for all hosts, but a probability of death near 100% for old hosts and zero for young hosts. These parameters, apart from age dependence, are modelled after a fungal pathogen of the genus *Rotiferophthora* [18]. The epidemic trajectory for $b = 0.2$ is shown in Fig. 3A. Note that the timescale of the epidemic is much shorter than that in the model of a collaborative population due to the major difference in member lifespans, and oscillations are not observed in these trajectories.

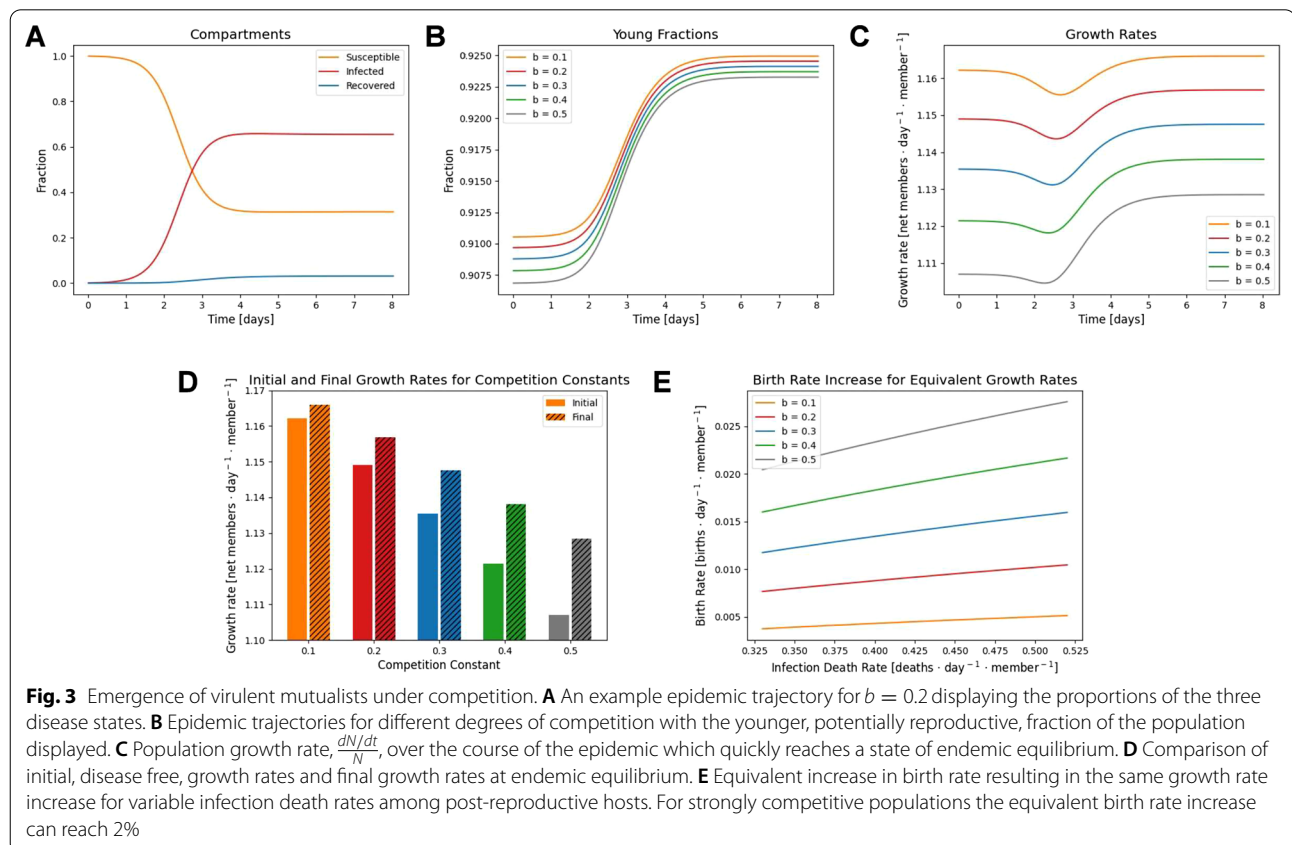
Due to the loss of old hosts as a result of infection, the young fraction of the population increases logarithmically over the epidemic phase and into endemicity (Fig. 3B). While the exponential growth rate ($\frac{dN}{dt}/N$, which is not the birth rate) still declines during the epidemic phase due to the loss of post-reproductive members, it remains positive and the endemic growth rate is elevated relative to the disease-free state (Fig. 3C). The increased growth rate as a result of endemic infection is greater for more competitive populations (larger b , Fig. 2D).

As for the collaborative case, the death rate due to infection was then varied, ranging from 0.33/day to 0.52/day among old hosts, remaining at zero for young hosts.

For each final growth rate, the equivalent birth rate for a disease-free state was computed such that the final growth rate attained was the same for both models. Note that even a 1% change in the exponential growth rate under these conditions results in a 50% larger population within the time span of 3 generations. The introduction of a virulent pathogen significantly increased the population growth rate, in some cases equivalent to increasing the birth rate by more than 2% (Fig. 3E). An additional competitive population was loosely modelled after sweat bees [19] introduced to a pathogen resembling acute bee paralysis virus [20], resulting in qualitatively similar behavior (see Additional file 1: Fig. S2).

Discussion

Parasites, by definition, decrease host fitness and the introduction of a parasite into one or more competing host species can substantially alter the ecological landscape resulting in or preventing the extinction of one competitor [24, 25]. Symbionts that are parasitic in the absence of inter-species host competition but which increase the competitiveness of infected hosts (for example, through allelopathy [26]) establish a seemingly surprising, mutualistic relationship. Similarly, host



competition can admit the persistence of a parasite under conditions where persistence within a single host population is not supported [25]. Furthermore, even within a single host species, symbionts that are parasitic in one environment can provide a fitness advantage due to specialized adaptations in another environment, for example, promoting resistance to drought [27].

Parasitic interactions can also substantially alter intra-species competition due to variability in tolerance or transmissibility influenced by genomic or nongenomic factors including host density [28] and age. In previous human epidemics, advanced age has been commonly associated with increased [4, 5] or occasionally decreased [5, 6] morbidity and mortality. More generally, species lifespans are likely influenced by pathogen interactions. Populations of species with short lifespans are able to clear pathogens faster, and being short-lived decreases the probability of crossing the species barrier, which typically requires major adaptations to emerge within the first infected novel host to mediate efficient transmission [29].

Age structure substantially alters transmission dynamics, and can reduce the likelihood of an epidemic while increasing the magnitude in the event of an outbreak [30]. The presence of immune post-reproductive hosts decreases the density of susceptible hosts and reduces the rate of infection; however, susceptible, and senescent, post-reproductive hosts can increase the cumulative number of mortalities. The disparity in predicted outcomes between homogenous (which may already lead to diverse results [31, 32]) and age-structured populations is exacerbated in the event of vaccination [33].

Here we demonstrate that host age structure, associated with differential susceptibility to a parasite, can determine whether a virulent pathogen, as defined by its relationship with individual hosts, is a parasite or a mutualist with respect to the population as a whole. In competitive populations where older, post-reproductive hosts share resources with younger, potentially reproductive hosts, virulent pathogens that disproportionately affect non-reproductive hosts increase the population growth rate. We emphasize that in the model presented, competition among young hosts is implicitly neutral with respect to the average reproductive success of the entire young host population. This is not universally true, and among some species, a high density of young hosts can result in excessively aggressive mating behavior resulting in a net loss. Furthermore, the predicted phenomenon of virulent mutualism is unlikely to substantially affect the population growth rate under conditions where the age-independent death rate is high.

Conversely, in collaborative populations, where older, post-reproductive hosts aid in the reproduction of

younger hosts, the cost of the loss of a non-reproductive host can be even greater than that of a young host. This limiting case is likely only biologically realistic for a small group of long-living mammals with complex social structures for which the informational advantage of old individuals is substantial, and even among such populations, post-reproductive individuals have been observed to engage in riskier behavior than young individuals, suggesting a reduced relative cost [34]. On the other hand, although post-reproductive lifespans appear to be rare, even among mammals [12], most if not all cellular life forms exhibit some form of senescence [7–11].

Therefore, although advanced social roles for post-reproductive members have not yet been identified outside of mammals, costs and potentially benefits associated with the presence of senescent hosts are likely widespread even for unicellular life. Among prokaryotes, horizontal gene transfer from dead, maximally senescent, cells can prevent irreversible genomic deterioration, Muller's ratchet [35]. In addition to chronological age, altering the stationary cell cycle phase distribution [36, 37] can modify the fitness landscape by altering phase-dependent gene expression [38] potentially delegating different functions to individuals in different phases. Thus, collaborative populations might be far more common across the diversity of life than is immediately obvious.

These, often complex, impacts of age structure have to be taken into account prior to formulating a strategy for intervention against a pathogen, mitigation of invasive species, or preservation of an endangered population [39]. For example, food provisioning both increases resource availability and host aggregation, potentially amplifying pathogen invasion [40]. Thus, in the context of competition, which may itself be magnified as a result of host aggregation, the effect of a pathogen likely enhances conservation efforts, whereas in the case of collaboration, this straightforward intervention could lead to population decline.

The model presented is simple and subject to the many limitations described above. Nonetheless, we believe that the central concept demonstrated by this model, namely, that the nature of a symbiotic relationship can change depending on the age-structure of the host population, is underappreciated and broadly relevant. This work suggests that evolutionary constraints on pathogen evolution among collaborative and competitive populations substantially differ. Future work evaluating these dynamics among competitive host populations near environmental carrying capacity should enable the inference of the frequency of virulent mutualists among species implicated in prior zoonoses.

Supplementary Information

The online version contains supplementary material available at <https://doi.org/10.1186/s13062-022-00343-9>.

Additional file 1. Fig. S1. Alternative model for collaboration among humans. **A.** Functional dependence on the population age structure for the fraction of younger hosts which reproduce under collaborative conditions. $a = 0$, $0 < b \leq \frac{1}{2}$, and competitive, $b = 0$, $0 < a \leq \frac{1}{2}$. **B.** An example epidemic trajectory for $a = 0.2$ displaying the proportions of the three disease states. **C.** Epidemic trajectories for different degrees of collaboration with the younger, potentially reproductive, fraction of the population displayed. **D.** Population growth rate, $\frac{dN}{dt}$, during the epidemic phase (left) and relaxation into endemicity (right). **E.** Comparison of initial, disease free, growth rates and final growth rates at endemic equilibrium. **F.** Equivalent infection death rates for younger, potentially reproductive, hosts resulting in the same growth rate suppression for variable infection death rates among post-reproductive hosts. **Fig. S2.** Competition among sweat bees. **A.** An example epidemic trajectory for $b = 0.2$ displaying the proportions of the three disease states. **B.** Epidemic trajectories for different degrees of competition with the younger, potentially reproductive, fraction of the population displayed. **C.** Population growth rate, $\frac{dN}{dt}$, over the course of the epidemic which quickly reaches a state of endemic equilibrium. **D.** Comparison of initial, disease free, growth rates and final growth rates at endemic equilibrium. **E.** Equivalent increase in birth rate resulting in the same growth rate increase for variable infection death rates among post-reproductive hosts.

Acknowledgements

The authors thank Koonin group members for helpful discussions.

Author contributions

YIW, APB, EVK, and NDR designed the study; COSP, EGR, and JAR programed the model; COSP, EGR, JAR, YIW, and NDR conducted the analysis; COSP, EVK, and NDR wrote the manuscript that was edited and approved by all authors. All authors read and approved the final manuscript.

Authors' information

COSP, EGR, and JAR are students in the Montgomery Blair High School Magnet Program supervised by APB. YIW, EVK, and NDR hold intramural positions at the NIH.

Funding

Open Access funding provided by the National Institutes of Health (NIH) YIW, NDR, and EVK are supported by the Intramural Research Program of the National Institutes of Health.

Availability of data and materials

Supplementary figures and extended data are available for download as a single pdf.

Declarations

Ethical approval and consent to participate

Not applicable.

Consent for publication

All authors have provided consent for publication.

Human ethics

Not applicable.

Competing interests

The authors have no competing interests to declare.

Author details

¹Montgomery Blair High School, Magnet Program, Silver Spring, MD 20901, USA. ²National Center for Biotechnology Information, National Library of Medicine, Bethesda, MD 20894, USA.

Received: 17 August 2022 Accepted: 14 October 2022

Published online: 12 November 2022

References

1. S Paracer V Ahmadjian 2000 Symbiosis: an introduction to biological associations Oxford University Press Oxford
2. A Casadevall L-a Pirofski 1999 Host-pathogen interactions: redefining the basic concepts of virulence and pathogenicity *Infect Immun* 67 8 3703 3713
3. IJ Amanna NE Carlson MK Slifka 2007 Duration of humoral immunity to common viral and vaccine antigens *N Engl J Med* 357 19 1903 1915
4. M Biswas S Rahaman TK Biswas Z Haque B Ibrahim 2021 Association of sex, age, and comorbidities with mortality in COVID-19 patients: a systematic review and meta-analysis *Intervirology* 64 1 36 47
5. L Simonsen 1998 Pandemic versus epidemic influenza mortality: a pattern of changing age distribution *J Infect Dis* 178 1 53 60
6. A Gagnon 2013 Age-specific mortality during the 1918 influenza pandemic: unravelling the mystery of high young adult mortality *PLoS ONE* 8 e69586
7. J-F Lemaître 2015 Early-late life trade-offs and the evolution of ageing in the wild *Proc R Soc B: Biol Sci* 282 1806 20150209
8. DH Nussey H Froy J-F Lemaître J-M Gaillard SN Austad 2013 Senescence in natural populations of animals: widespread evidence and its implications for bio-gerontology *Ageing Res Rev* 12 1 214 225
9. Noodén LD, Guiamét JJ, John I. Whole plant senescence. *Plant cell death processes*, p 227–44 (Elsevier, 2004).
10. M Kaeberlein CR Burtner BK Kennedy 2007 Recent developments in yeast aging *PLoS Genet* 3 5 e84
11. M Ackermann SC Stearns U Jenal 2003 Senescence in a bacterium with asymmetric division *Science* 300 5627 1920 1920
12. S Ellis 2018 Postreproductive lifespans are rare in mammals *Ecol Evol* 8 5 2482 2494
13. K Hawkes 2003 Grandmothers and the evolution of human longevity *Am J Hum Biol* 15 3 380 400
14. M Gurven H Kaplan 2007 Longevity among hunter-gatherers: a cross-cultural examination *Popul Dev Rev* 33 2 321 365
15. M Lahdenperä V Lummaa S Helle M Tremblay AF Russell 2004 Fitness benefits of prolonged post-reproductive lifespan in women *Nature* 428 6979 178 181
16. S Natrass 2019 Postreproductive killer whale grandmothers improve the survival of their grandoffspring *Proc Natl Acad Sci* 116 52 26669 26673
17. C Ricci 1983 Life histories of some species of Rotifera Bdelloidea *Hydrobiologia* 104 1 175 180
18. Barron GL. Fungal parasites and predators of rotifers, nematodes, and other invertebrates. *Biodiversity of fungi: inventory and monitoring methods*. 2004;435–450.
19. KA Stockhammer 1966 Nesting habits and life cycle of a sweat bee, *Augochlora pura* (Hymenoptera: Halictidae) *J Kansas Entomol Soc* 39 157 192
20. Eberl HJ, Frederick MR, Kevan PG. Importance of brood maintenance terms in simple models of the honeybee-Varroa destructor-acute bee paralysis virus complex. *Electron J Differ Equ (EJDE)[electronic only]*. 2010;19, 85–98.
21. Rochman N, Wolf YI, Koonin EV. Evolution of human respiratory virus epidemics. *F1000Research*. 2021;10.
22. AV Tkachenko 2021 Time-dependent heterogeneity leads to transient suppression of the COVID-19 epidemic, not herd immunity *Proc Natl Acad Sci* 118 17 e2015972118
23. AV Tkachenko 2021 Stochastic social behavior coupled to COVID-19 dynamics leads to waves, plateaus, and an endemic state *Elife* 10 e68341
24. EA Mordecai 2011 Pathogen impacts on plant communities: unifying theory, concepts, and empirical work *Ecol Monogr* 81 3 429 441

25. L Han A Pugliese 2009 Epidemics in two competing species *Nonlinear Anal Real World Appl* 10 2 723 744
26. Mattner SW. The impact of pathogens on plant interference and allelopathy. *Allelochemicals: Biological control of plant pathogens and diseases*. 2006;79–101.
27. R González 2021 Plant virus evolution under strong drought conditions results in a transition from parasitism to mutualism *Proc Natl Acad Sci* 118 6 e2020990118
28. HM Alexander RD Holt 1998 The interaction between plant competition and disease *Perspect Plant Ecol Evol System* 1 2 206 220
29. PV Lidsky R Andino 2020 Epidemics as an adaptive driving force determining lifespan setpoints *Proc Natl Acad Sci* 117 30 17937 17948
30. J Clark L McNally TJ Little 2021 Pathogen dynamics across the diversity of aging *Am Nat* 197 2 203 215
31. M Castro S Ares JA Cuesta S Manrubia 2020 The turning point and end of an expanding epidemic cannot be precisely forecast *Proc Natl Acad Sci* 117 42 26190 26196
32. CO Wilke CT Bergstrom 2020 Predicting an epidemic trajectory is difficult *Proc Natl Acad Sci* 117 46 28549 28551
33. F Magpantay A King P Rohani 2019 Age-structure and transient dynamics in epidemiological systems *J R Soc Interface* 16 156 20190151
34. PF Whitehead CJ Jolly 2000 *Old world monkeys* Cambridge University Press Cambridge
35. N Takeuchi K Kaneko EV Koonin 2014 Horizontal gene transfer can rescue prokaryotes from Muller's ratchet: benefit of DNA from dead cells and population subdivision *G3: Genes Genomes Genet* 4 2 325 339
36. ND Rochman DM Popescu SX Sun 2018 Ergodicity, hidden bias and the growth rate gain *Phys Biol* 15 3 036006
37. Barnum KJ, O'Connell MJ. Cell cycle regulation by checkpoints. *Cell cycle control* (Springer, 2014), pp 29–40.
38. Fischer M, Schade AE, Branigan TB, Müller GA, DeCaprio JA. Coordinating gene expression during the cell cycle. *Trends Biochem Sci*. 2022.
39. PJ Hudson 2002 Trophic interactions and population growth rates: describing patterns and identifying mechanisms *Philos Trans R Soc Lond Ser B: Biol Sci* 357 1425 1259 1271
40. DJ Becker DG Streicker S Altizer 2015 Linking anthropogenic resources to wildlife–pathogen dynamics: a review and meta-analysis *Ecol Lett* 18 5 483 495

Publisher's Note

Springer Nature remains neutral with regard to jurisdictional claims in published maps and institutional affiliations.

Ready to submit your research? Choose BMC and benefit from:

- fast, convenient online submission
- thorough peer review by experienced researchers in your field
- rapid publication on acceptance
- support for research data, including large and complex data types
- gold Open Access which fosters wider collaboration and increased citations
- maximum visibility for your research: over 100M website views per year

At BMC, research is always in progress.

Learn more biomedcentral.com/submissions

