

RESEARCH

Open Access



Strategies for lung- and diaphragm-protective ventilation in acute hypoxemic respiratory failure: a physiological trial

Jose Dianti^{1,2}, Samira Fard³, Jenna Wong², Timothy C. Y. Chan⁴, Lorenzo Del Sorbo^{1,2}, Eddy Fan^{1,2}, Marcelo B. Passos Amato⁵, John Granton^{1,2}, Lisa Burry^{1,6,7}, W. Darlene Reid^{1,8}, Binghao Zhang⁴, Damian Ratano¹, Shaf Keshavjee⁹, Arthur S. Slutsky^{1,10}, Laurent J. Brochard^{1,10}, Niall D. Ferguson^{1,2,11,12,13} and Ewan C. Goligher^{1,2,11,13*}

Abstract

Background: Insufficient or excessive respiratory effort during acute hypoxemic respiratory failure (AHRF) increases the risk of lung and diaphragm injury. We sought to establish whether respiratory effort can be optimized to achieve lung- and diaphragm-protective (LDP) targets (esophageal pressure swing -3 to -8 cm H₂O; dynamic transpulmonary driving pressure ≤ 15 cm H₂O) during AHRF.

Methods: In patients with early AHRF, spontaneous breathing was initiated as soon as passive ventilation was not deemed mandatory. Inspiratory pressure, sedation, positive end-expiratory pressure (PEEP), and sweep gas flow (in patients receiving veno-venous extracorporeal membrane oxygenation (VV-ECMO)) were systematically titrated to achieve LDP targets. Additionally, partial neuromuscular blockade (pNMBA) was administered in patients with refractory excessive respiratory effort.

Results: Of 30 patients enrolled, most had severe AHRF; 16 required VV-ECMO. Respiratory effort was absent in all at enrolment. After initiating spontaneous breathing, most exhibited high respiratory effort and only 6/30 met LDP targets. After titrating ventilation, sedation, and sweep gas flow, LDP targets were achieved in 20/30. LDP targets were more likely to be achieved in patients on VV-ECMO (median OR 10, 95% CrI 2, 81) and at the PEEP level associated with improved dynamic compliance (median OR 33, 95% CrI 5, 898). Administration of pNMBA to patients with refractory excessive effort was well-tolerated and effectively achieved LDP targets.

Conclusion: Respiratory effort is frequently absent under deep sedation but becomes excessive when spontaneous breathing is permitted in patients with moderate or severe AHRF. Systematically titrating ventilation and sedation can optimize respiratory effort for lung and diaphragm protection in most patients. VV-ECMO can greatly facilitate the delivery of a LDP strategy.

Trial registration: This trial was registered in Clinicaltrials.gov in August 2018 (NCT03612583).

*Correspondence: ewan.goligher@uhn.ca

¹ Interdepartmental Division of Critical Care Medicine, University of Toronto, Toronto, Canada

Full list of author information is available at the end of the article



© The Author(s) 2022. **Open Access** This article is licensed under a Creative Commons Attribution 4.0 International License, which permits use, sharing, adaptation, distribution and reproduction in any medium or format, as long as you give appropriate credit to the original author(s) and the source, provide a link to the Creative Commons licence, and indicate if changes were made. The images or other third party material in this article are included in the article's Creative Commons licence, unless indicated otherwise in a credit line to the material. If material is not included in the article's Creative Commons licence and your intended use is not permitted by statutory regulation or exceeds the permitted use, you will need to obtain permission directly from the copyright holder. To view a copy of this licence, visit <http://creativecommons.org/licenses/by/4.0/>. The Creative Commons Public Domain Dedication waiver (<http://creativecommons.org/publicdomain/zero/1.0/>) applies to the data made available in this article, unless otherwise stated in a credit line to the data.

Keywords: Hypoxemic respiratory failure, Lung-protective ventilation, Diaphragm-protective ventilation, Mechanical ventilation

Background

Patients with acute hypoxemic respiratory failure (AHRF) commonly require mechanical ventilation. Although potentially lifesaving, complications of mechanical ventilation such as ventilator-induced diaphragm dysfunction can adversely affect patient outcomes [1–3]. Excessive ventilatory support and heavy sedation can suppress respiratory effort and cause disuse atrophy of the diaphragm [4]. Restoring respiratory effort may prevent diaphragm atrophy and weakness and improve outcomes [5]. These patients, however, often have excessive respiratory efforts [6], which may result in injurious lung stress and strain (patient self-inflicted lung injury) and load-induced diaphragm injury (myotrauma) [5, 7].

To avoid these injuries, a lung- and diaphragm-protective (LDP) approach has been proposed. This approach specifies putatively protective ranges for both respiratory effort and lung-distending pressure during mechanical ventilation. A recent trial demonstrated that titrating inspiratory support to achieve diaphragm-protective targets for respiratory effort increased the probability of achieving appropriate effort levels in patients who were already on assisted ventilation for several days [8]. Early intervention is crucial, however, because the risk of injury to the lung and diaphragm is likely highest during the early course of ventilation. It remains unknown whether LDP targets can be achieved during AHRF prior to the weaning phase. Previous studies suggest that higher positive end-expiratory pressure (PEEP) [9], extracorporeal CO₂ removal, and partial neuromuscular blockade may be useful to control respiratory effort [10]. We conducted a physiological trial in patients with early AHRF to establish whether LDP targets could be achieved by systematically titrating inspiratory pressure, sedation, positive end-expiratory pressure and, in patients already on veno-venous extracorporeal membrane oxygenation (VV-ECMO), sweep gas flow. In patients refractory to these interventions, we evaluated whether LDP targets could be achieved by applying adjunctive partial neuromuscular blockade.

Methods

This was a physiological randomized cross-over clinical trial testing the effect of different interventions on lung-distending pressure (quantified by the dynamic transpulmonary driving pressure, $\Delta P_{L,dyn}$) and respiratory effort (quantified by the esophageal pressure swing, ΔP_{es}) to achieve LDP targets in patients with AHRF (Trial

registration: NCT03612583, University Health Network Research Ethics Board #18-5644). The trial was initially designed to ascertain whether LDP targets could be achieved and maintained over 24 h. Owing to the complexity of the trial intervention and the focus on physiological effects, this approach was modified to focus on whether LDP targets could be achieved by the end of trial intervention.

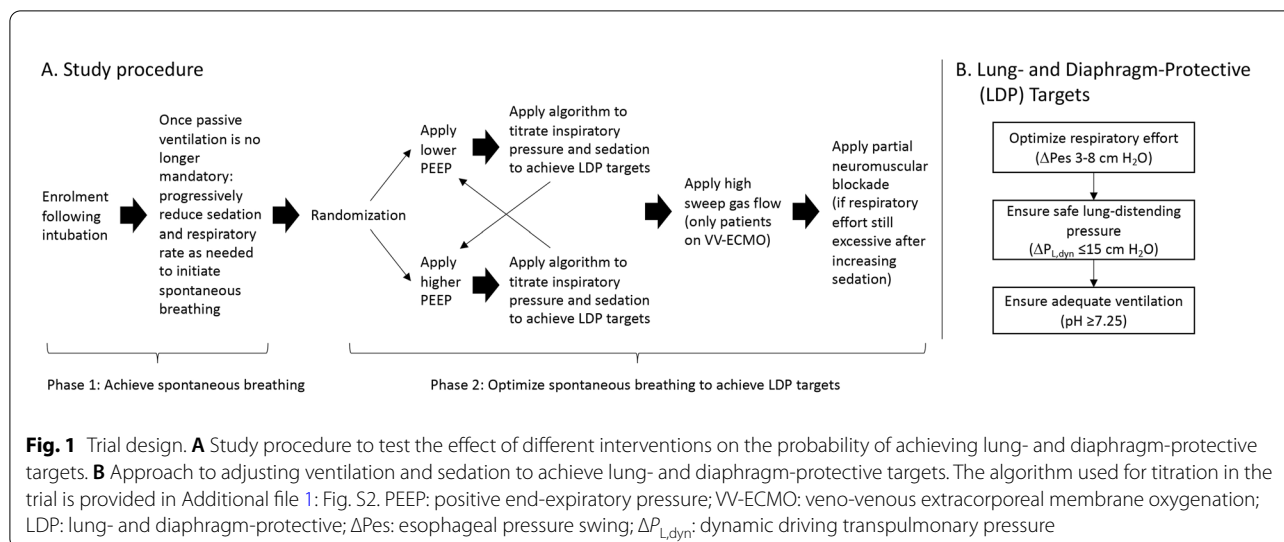
Study population and setting

This trial was conducted in the medical-surgical intensive care unit (ICU) at the Toronto General Hospital, a quaternary academic hospital serving as the major provincial referral centre for patients with severe acute hypoxemic respiratory failure. We enrolled invasively mechanically ventilated patients with AHRF (including patients receiving veno-venous extracorporeal membrane oxygenation, VV-ECMO), defined by $PaO_2:FiO_2 \leq 300$ mm Hg not attributable to cardiogenic pulmonary edema at enrolment or before cannulation for VV-ECMO. Patients were excluded if they had any contraindication to esophageal catheterization, acute brain injury or intracranial hypertension, or were expected to be liberated from mechanical ventilation within 24 h. Eligible patients were identified by daily screening and enrolled as early as possible following initiation of invasive ventilation.

Measurements

Airway pressure (P_{aw}), flow, and tidal volume (V_T) were measured by a pneumotachograph at the airway opening (FluxMed, MBMed, Buenos Aires, Argentina). An esophageal balloon catheter (NutriVent, Modena, Italy) was placed to measure ΔP_{es} and $\Delta P_{L,dyn}$. Diaphragm electrical activity (Edi) was measured by a specially fitted esophageal catheter connected to the Servo-U ventilator (Getinge, Solna, Sweden).

Transpulmonary pressure (P_L) was computed by real-time subtraction of P_{es} from P_{aw} . Static airway driving pressure (ΔP_{aw}) and transpulmonary driving pressure (ΔP_L) were measured by applying a transient end-inspiratory hold and a transient end-expiratory hold on the ventilator to measure plateau airway pressure (P_{plat}) plateau esophageal pressure ($P_{es,ei}$), total PEEP ($PEEP_{tot}$), and end-expiratory esophageal pressure ($P_{es,ee}$), respectively. ΔP_{es} was computed as the difference between end-expiratory P_{es} and the nadir of inspiratory P_{es} . $\Delta P_{L,dyn}$ was computed as the inspiratory swing in transpulmonary pressure (peak P_L – end-expiratory P_L).



Dynamic lung compliance ($C_{L,dyn}$) was computed as:

$$C_{L,dyn} = \frac{V_T}{\Delta P_{L,dyn}}$$

Study protocol

The protocol proceeded in two phases (Fig. 1A). The goal of the first phase was to initiate spontaneous breathing. This was accomplished by progressively reducing sedation, respiratory rate set on the ventilator, and sweep gas flow (in patients on VV-ECMO) according to a standardized procedure (Additional file 1: Fig. S1) until patients were continuously triggering the ventilator. During this phase, ventilator mode and settings were otherwise managed by the clinician in charge of the patient following usual clinical practice. Once spontaneous respiratory efforts were present, the ventilator mode was converted to pressure support ventilation mode and adjusted per standard clinical procedure to achieve respiratory frequency ≤ 35 breaths per minute and V_T of ≤ 8 cc/kg predicted body weight, or pressure assist-control mode with inspiratory pressure and time titrated to achieve ≤ 8 cc/kg predicted body weight and set rate adjusted to maintain patient triggered breaths and respiratory frequency ≤ 35 .

The goal of the second phase was to test whether spontaneous breathing could be modulated to achieved LDP targets (ΔP_{es} -3 to -8 cm H₂O and $\Delta P_{L,dyn} \leq 15$ cm H₂O (Fig. 1B). The rationale for these targets is detailed in Additional file 1: Study Protocol, and elsewhere [5]. To compare the effects of higher and lower PEEP levels on LDP targets, patients were randomly assigned to lower PEEP (PEEP of 8 cm H₂O or the lowest PEEP level required to maintain $FiO_2 \leq 90\%$ and $SpO_2 \geq 90\%$) or

higher PEEP (PEEP sufficient to maintain end-expiratory P_L between 2–3 cm H₂O). Inspiratory pressure and the propofol infusion rate were then adjusted according to a predefined stepwise algorithm (Additional file 1: Fig. S2) to attempt to achieve LDP targets. This titration procedure was then repeated after patients were crossed over to the alternate PEEP level. In patients on VV-ECMO, sweep gas flow was then increased to the maximum level that did not induce apnea and the titration procedure was repeated again. Finally, in patients whose respiratory effort remained excessive after all prior interventions including maximal sedation with propofol, partial neuromuscular blockade was applied using intermittent boluses (0.5–1 mg) of cisatracurium. The protocol is described in detail in Additional file 1: Study Protocol.

Outcomes and statistical analysis

The proportion of patients meeting LDP targets at the end of each step in the trial was computed with 95% confidence intervals. The effect of each studied intervention on the probability of meeting LDP targets was quantified using a Bayesian generalized mixed effects model with non-informative priors [11]. For this model, we report the median and 95% credible intervals (CrI) for the odds ratio (OR) and the posterior probability of OR > 1 for each intervention. Because VV-ECMO was found to significantly modify the effect of LDP titration, the results are also reported separately for patients receiving or not receiving VV-ECMO.

The effects of each study intervention on ΔP_{es} and $\Delta P_{L,dyn}$ were quantified by linear mixed effects models. Since PEEP is known to have highly variable effects on lung mechanics, the probability of meeting LDP targets was also compared between the two PEEP levels classified

by whether dynamic lung compliance was improved or worsened by that PEEP level in comparison to the alternate PEEP level. Physiological and clinical characteristics were compared between patients in whom LDP targets were achieved or not achieved using the standardized mean difference.

The original planned sample size for the trial was 40 patients. Owing to unexpectedly slow recruitment during the 27-month study period (partly due to interruptions from the COVID-19 pandemic), we reviewed the sample size calculation and decided that a sample size of 30 subjects was sufficient to estimate the proportion of patients in whom LDP targets were achieved after PEEP and sweep gas flow titrations were completed with acceptable precision (confidence intervals of $\pm 16\%$ with 30 patients vs. confidence intervals $\pm 12\%$ with 40 patients). This decision was made prior to any data analysis.

A detailed description of additional methods is provided in Additional file 1: Details on the Statistical Analysis. Statistical analyses were performed using R v4.2.0 (R Foundation for Statistical Computing, <https://www.R-project.org>). Bayesian models were built using the {rstanarm} package [12].

Results

Between January 2019 and March 2021, 134 patients were assessed for eligibility; 35 were consented and enrolled. Of these, 1 patient was excluded after self-extubation, 2 patients were transferred back to the referring hospital before starting the protocol, and 2 patients died before the LDP titration procedure could be initiated (Additional file 1: Fig. S3). Thirty patients underwent the LDP titration procedure and were included in the final analysis. Baseline clinical and physiological characteristics are reported in Table 1.

Phase 1—Initiating spontaneous breathing

At enrolment, 0/30 patients (0%, 95% CI 0, 11%) met LDP targets. In all cases this was due to absent or insufficient respiratory effort (Fig. 2). Median (IQR) static driving pressure at enrolment was 16 cm H₂O (12, 18 cm H₂O).

After reducing sedation, set respiratory rate on the ventilator, and sweep gas flow to initiate patient spontaneous breathing (and prior to applying the LDP titration algorithm), most patients exhibited excessive ΔP_{es} and $\Delta P_{L,dyn}$ (Fig. 2) and a minority (6/30, 20%, 95% CI 10, 37%) met LDP targets. Median time from enrolment to achieving spontaneous breathing was 1 day (IQR 1, 4 days).

Table 1 Patient characteristics and ventilation variables at enrolment

Age, median (IQR)	54 (49, 60)
Female sex, <i>n</i> (%)	10 (33)
APACHE II, median (IQR)	21 (18, 24)
SOFA, median (IQR)	11 (10, 12)
AHRF severity, median (IQR)	
Moderate: PaO ₂ :FiO ₂ 100-200 mm Hg	7 (23)
Severe: PaO ₂ :FiO ₂ <100 mm Hg	23 (77)
Comorbidities, <i>n</i> (%)	
COPD	5 (17)
Asthma	3 (10)
Diabetes	8 (27)
Chronic kidney disease	1 (3)
Interstitial lung disease	7 (23)
Etiology of respiratory failure	
Bacterial pneumonia	13 (43)
Fungal pneumonia	1 (3)
Viral pneumonia (non-COVID-19)	2 (7)
COVID-19 pneumonia	14 (47)
SAS, median (IQR)	1 (1, 2)
PaO ₂ :FiO ₂ (mm Hg)*, median (IQR)	109 (79, 167)
Ventilatory ratio†, median (IQR)	2 (1.6, 2.7)
Mode of ventilation, <i>n</i> (%)	
Assist-control volume ventilation	21 (70)
Assist-control pressure ventilation	9 (30)
V _T /PBW (ml/kg), median (IQR)	6 (5, 8)
PEEP (cm H ₂ O), median (IQR)	10 (9, 14)
Driving pressure (cm H ₂ O), median (IQR)	17 (12, 19)
Respiratory system compliance (ml/cm H ₂ O), median (IQR)	23 (16, 37)
Normalized respiratory system elastance (cm H ₂ O/ml/PBW), median (IQR)	2.6 (1.9, 5)
ECLS blood flow, (L/min) median (IQR)	5 (4, 5)
Sweep gas flow (L/min), median (IQR)	5 (4, 5)

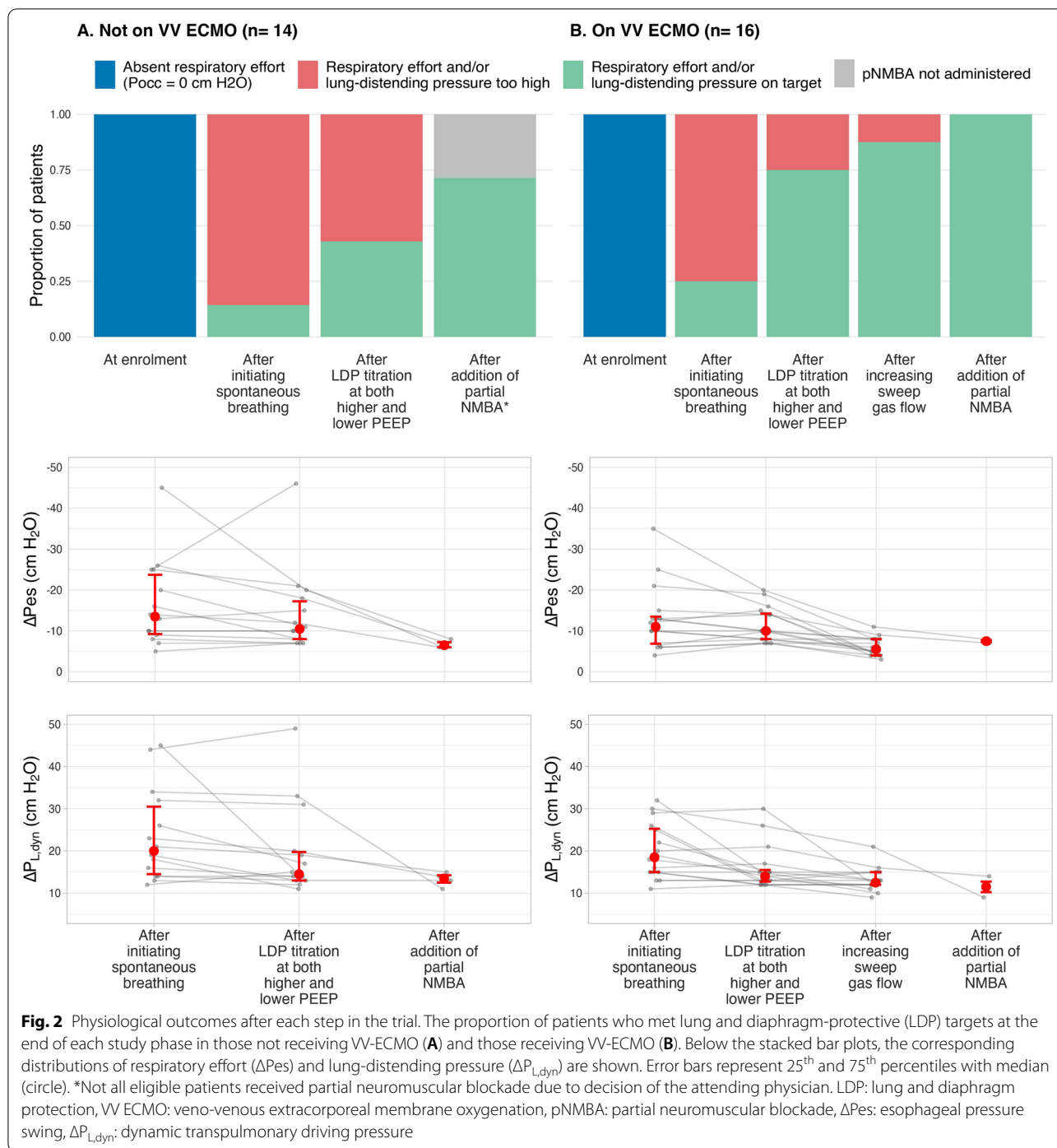
IQR interquartile range, COPD chronic obstructive pulmonary disease, SOFA sequential organ failure assessment, SAS sedation-agitation score, V_T tidal volume, PEEP positive end-expiratory pressure, PBW predicted body weight, ECLS extracorporeal life support

*Represents only patients not receiving VV-ECMO (*n* = 14). Values of PaO₂:FiO₂ may not be representative of lung function in patients receiving VV-ECMO at enrolment

† Represents only patients not receiving VV-ECMO (*n* = 14). Values of VR may not be representative of lung function in patients receiving VV-ECMO at enrolment

Phase 2—Optimizing spontaneous breathing: titrating ventilation and sedation

Respiratory mechanics, gas exchange, ΔP_{es} , and $\Delta P_{L,dyn}$ before and after LDP titration are reported in Fig. 2 and Additional file 1: Table S1. Changes in ventilation and sedation based on the algorithm are described in Additional file 1: Changes in Ventilation and Sedation During the LDP Titration Procedure and in Additional file 1: Fig. S4. Most patients (27/30) were ventilated in



pressure support ventilation mode. The remaining 3 patients were ventilated in assist-control pressure control mode.

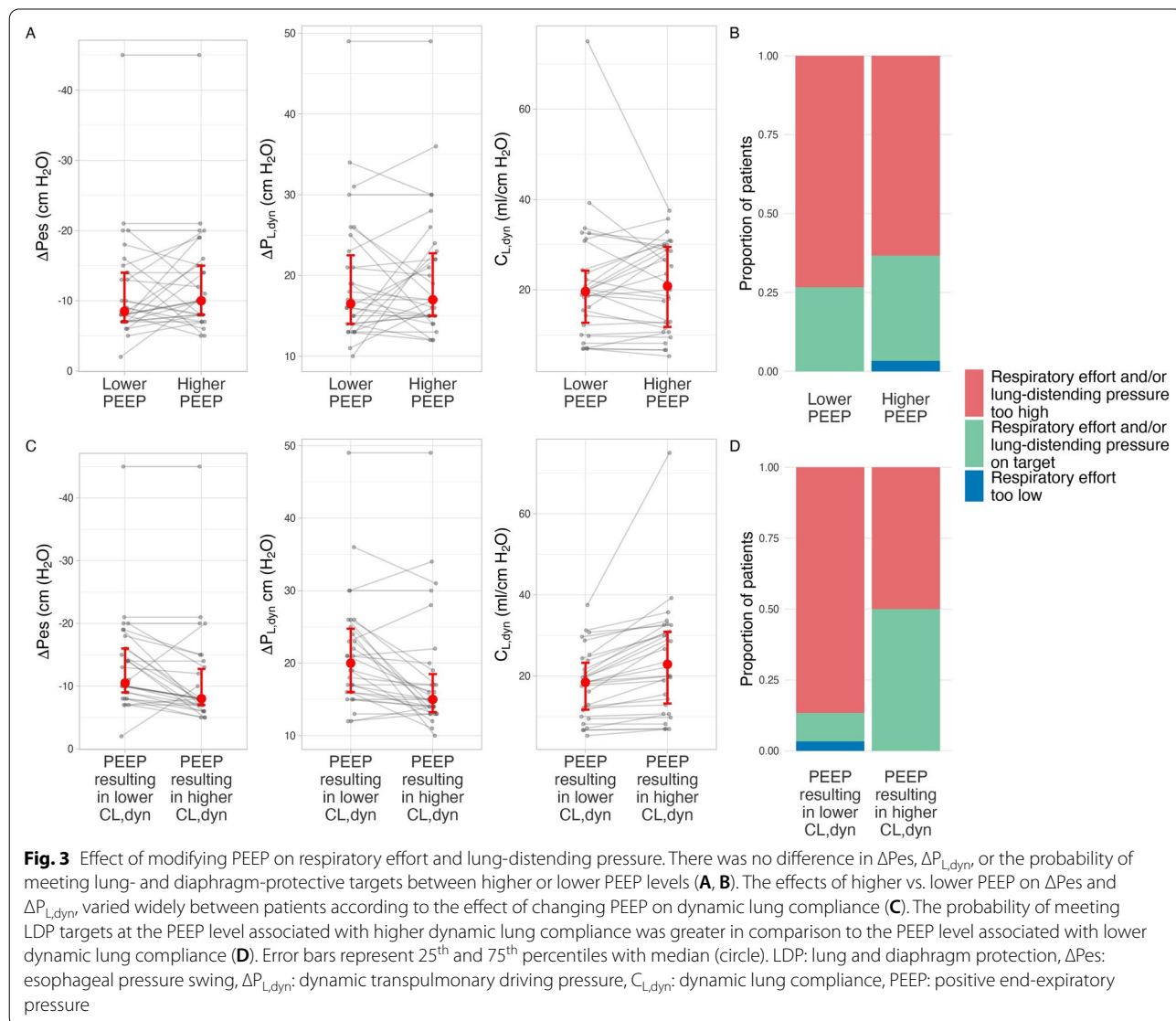
Overall, 18/30 patients met LDP targets after completing the titration procedure at both higher and lower PEEP levels (in comparison to end of phase 1: median OR 37, 95% CrI 4, 992). LDP targets were achieved in 6/14

patients not receiving VV-ECMO (in comparison to end of phase 1: median OR 12, 95% CrI 1, 545) and in 12/16 patients receiving VV-ECMO (in comparison to end of phase 1: median OR 33, 95% CrI 3, 1635) (Fig. 2). Among patients with excessive respiratory effort ($\Delta P_{es} < -8$ cm H₂O) at the end of phase 1, the LDP titration procedure attenuated ΔP_{es} (mean difference 3 cm H₂O, 95% CrI

-1, 7 cm H₂O) and $\Delta P_{L,dyn}$ (mean difference -4 cm H₂O, 95% CrI -7, 1 cm H₂O) (Fig. 2). Physiological and clinical characteristics of patients who did or did not meet LDP targets after completing the LDP titration procedure at both PEEP levels are shown in Additional file 1: Table S2. A higher fentanyl infusion rate was associated with successfully achieving LDP targets (Additional file 1: Fig. S4).

In a sensitivity analysis specifying more liberal LDP targets (ΔP_{es} -3 to -12 cm H₂O, $\Delta P_{L,dyn} \leq 20$ cm H₂O), 22/30 patients met LDP targets after LDP titration at both PEEP levels (73%, 95% CI 56, 86%), including 9/14 patients not receiving VV-ECMO (64%, 95% CI 46, 79%) and 13/16 patients receiving VV-ECMO (81%, 95% CI 64, 91%).

The LDP titration procedure was generally well tolerated. The most commonly observed adverse event associated with the intervention at any time point was respiratory acidosis in 5 (16%) patients. The protocol could not be completed in 1 patient due to a significant increase in the work of breathing following application of lower PEEP ($\Delta P_{es} < -25$ cm H₂O and signs of respiratory distress). Two (6%) patients developed transient hypotension requiring an increased vasopressor dose due to increases in sedation. No severe patient-ventilator dyssynchrony was observed.



Phase 2—Optimizing spontaneous breathing: specific effect of PEEP titration

Median (IQR) PEEP at the higher PEEP step was 14 cm H₂O (13, 16 cm H₂O); at the lower PEEP step it was 8 cm H₂O (8, 8 cm H₂O). Higher PEEP had, on average, minimal effect on ΔPes (mean difference -1 cm H₂O, 95% CrI -3, 1 cm H₂O) or ΔP_{L,dyn} (mean difference -1 cm H₂O, 95% CrI -3, 2 cm H₂O) (Fig. 3A). The probability of meeting LDP targets was similar at higher and lower PEEP levels (47% vs. 40%, median OR 1.5, 95% CrI 0.5, 5) (Fig. 3B).

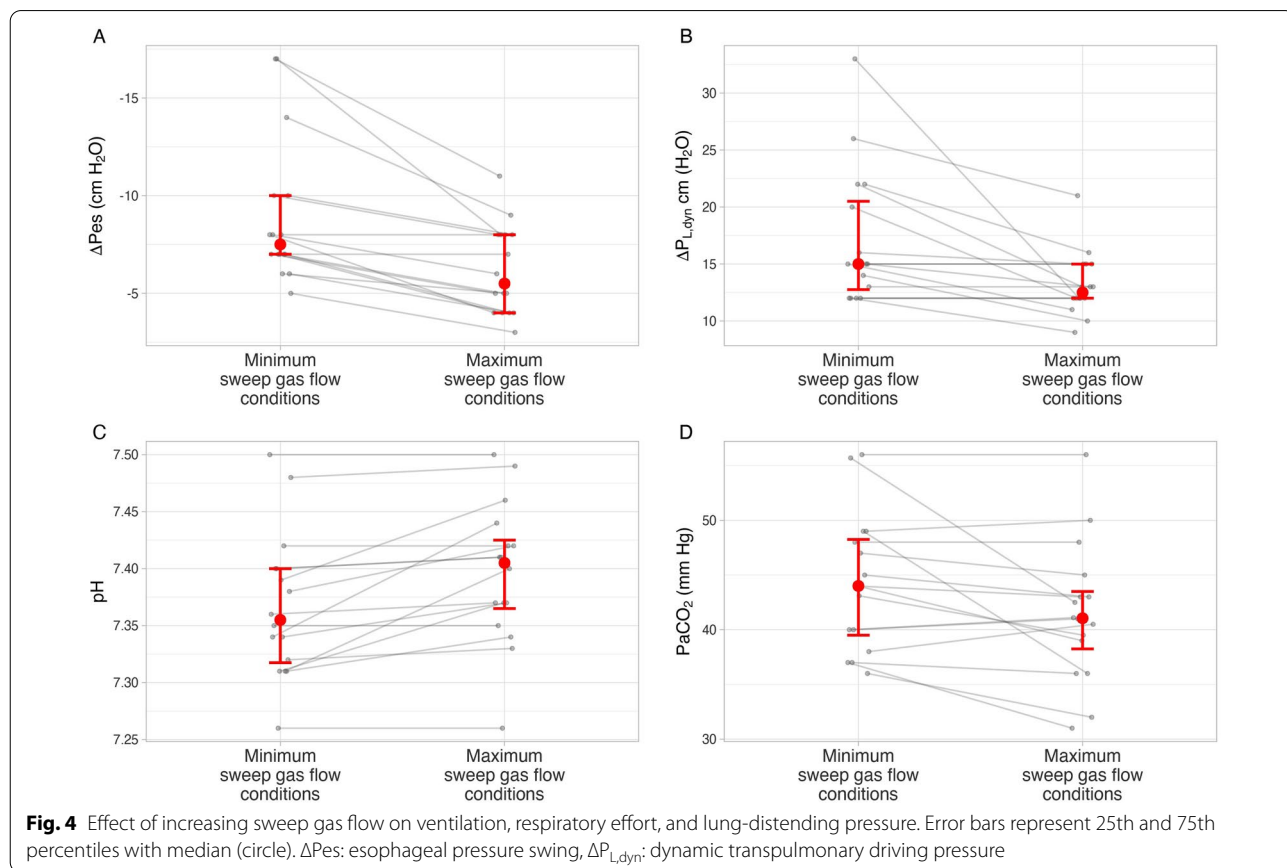
However, the effect of PEEP on ΔPes and ΔP_{L,dyn} varied substantially according to the effect of PEEP on dynamic lung compliance (Fig. 3C). Participants were more likely to meet targets at the PEEP level associated with higher dynamic lung compliance (50% vs. 10%, median OR 33, 95% CI 5, 898) (Fig. 3D). The PEEP level resulting in higher dynamic lung compliance attenuated ΔPes (mean difference 3 cm H₂O, 95% CrI 1, 4 cm H₂O) and ΔP_{L,dyn} (mean difference -3 cm H₂O, 95% CrI -5, -1 cm H₂O). Modifying PEEP did not affect Edi (Additional file 1: Fig. S5).

Phase 2—Optimizing spontaneous breathing: specific effect of extracorporeal CO₂ removal

After minimizing sweep gas flow in patients on VV-ECMO during phase 1, median (IQR) sweep gas flow was 5 (4, 5) L/min. After performing the LDP titration procedure at both PEEP levels, sweep gas flow was increased to median (IQR) 8 (7, 10) L/min. Increasing sweep gas flow attenuated ΔPes (mean difference 5 cm H₂O, 95% CrI 3, 7 cm H₂O) and ΔP_{L,dyn} (mean difference -3 cm H₂O, 95% CrI -5, 0 cm H₂O) (Fig. 4). Patients on VV-ECMO were much more likely to meet LDP targets in comparison to patients not on VV-ECMO (88% vs. 43%, median OR 10, 95% CrI 2, 81) (Fig. 2), despite more severe impairments in respiratory mechanics and gas exchange (Additional file 1: Table S2).

Phase 2—Optimizing spontaneous breathing: specific effect of partial neuromuscular blockade

Of the 10 patients who failed to meet LDP targets during the LDP titration procedure phase, 6 (2 receiving VV-ECMO and 4 not receiving VV-ECMO) received partial neuromuscular blockade with cisatracurium (median (IQR) dose 2.5 mg (2–4 mg)). Median (min–max) SAS during this phase was 1 (1–1). Partial neuromuscular



blockade attenuated ΔP_{es} (mean difference 6 cm H₂O, 95% CrI 3, 10 cm H₂O) and $\Delta P_{L,dyn}$ (mean difference -9 cm H₂O, 95% CrI -15, -4 cm H₂O). LDP targets were achieved in all 6 patients (Fig. 2). No respiratory acidosis, cardiopulmonary instability, hypertension, tachycardia, or distress was observed.

Overall results of intervention

After completing the full protocol, LDP targets were achieved in 26/30 patients, including 10/14 patients not on VV-ECMO and 16/16 patients on VV-ECMO. In the remaining 4 patients who did not achieve LDP targets, permission for administration of partial neuromuscular blockade was declined by the clinical team.

Discussion

In this physiological trial in patients with moderate to severe acute hypoxemic respiratory failure, LDP targets were safely and effectively achieved by systematically titrating ventilation and sedation, adjusting PEEP, increasing sweep gas flow (in patients on VV-ECMO), and (if needed) administering partial neuromuscular blockade. The effect of PEEP on respiratory effort varied markedly between patients, suggesting that PEEP has an important but unpredictable effect on respiratory effort in these patients and that, in order to optimize respiratory effort, the PEEP level must be individualized.

Our findings suggest that respiratory effort may often be either insufficient or excessive in patients with moderate or severe AHREF, putting them at high risk of lung or diaphragm injury. At enrolment, all patients were passively ventilated and apneic, signifying a risk of diaphragm disuse atrophy. When sedation and ventilation were initially reduced to restore respiratory drive and initiate spontaneous breathing, nearly all patients transitioned to exhibiting excessive respiratory effort and lung-distending pressure, suggesting a potential risk of patient self-inflicted lung injury or load-induced diaphragm myotrauma. The 'brittle' behaviour of respiratory drive and effort in these patients highlights the fundamental challenge of safe spontaneous breathing: respiratory effort must be optimized to avoid both extremes.

Role of sedation

Sedation represents a key component of the LDP strategy as it can improve patient-ventilator synchrony, reduce respiratory effort, and prevent lung overdistention. However, if sedation is excessive, it can suppress respiratory drive [13], increase the incidence of ineffective triggering [14], and lead to diaphragm disuse atrophy [15, 16]. Because sedation scores are poorly correlated to respiratory drive and effort [17] and are insensitive to the presence of dyssynchrony, a strategy that aims to control

respiratory effort must titrate sedation to the intensity of respiratory effort and not only according to traditional sedation scales, with close monitoring of patient-ventilator interaction. Further research is required to establish the optimum sedative strategy to maintain a safe spontaneous breathing pattern and to assess the trade-off with other complications of deep sedation such as prolonged immobility and delirium [18, 19].

Role of PEEP

Higher PEEP may theoretically facilitate safe spontaneous breathing by improving respiratory mechanics, ameliorating pendelluft, and attenuating respiratory effort [9, 20]. In this trial, when changes in PEEP (either decreases or increases) were associated with improved lung mechanics, respiratory effort and lung-distending pressure were effectively attenuated and the probability of achieving LDP targets was increased. We conclude that individualized PEEP titration is likely required to optimize spontaneous breathing.

Role of extracorporeal gas exchange

Extracorporeal CO₂ removal reduces ventilatory demands and hence can attenuate respiratory drive [21, 22]. In this trial, receipt of VV-ECMO was associated with a much higher probability of achieving LDP targets, despite more severe physiological derangement. Increasing sweep gas flow effectively and consistently reduced respiratory effort and lung-distending pressure. Extracorporeal CO₂ removal may therefore have an important role in facilitating safe spontaneous breathing while alleviating the need for increases in sedation to control respiratory effort.

Role of partial neuromuscular blockade

Partial neuromuscular blockade with low doses of cisatracurium were well-tolerated and effectively attenuated elevated respiratory effort when it was refractory to other interventions. This intervention was only administered for a short period of time until LDP targets were achieved, and the feasibility and safety of maintaining partial neuromuscular blockade over hours to days remains to be established.

Limitations

This study has several limitations. First, given the complexity of the LDP algorithm and the high acuity of the population studied in this centre, the feasibility of reproducing the results in other centres is uncertain. An experienced physician and respiratory therapist were in constant attendance at the bedside throughout

the procedure. The use of a predefined algorithm to titrate ventilator settings and sedation may facilitate the reproducible evaluation of our protocol by other researchers. Second, the optimal ranges for respiratory effort and lung-distending pressure for the LDP approach remain somewhat uncertain. We employed values proposed by an international consensus group [5], but less conservative limits may still be safe and could increase the proportion of patients in whom LDP targets are achieved, as suggested in the sensitivity analysis. Third, the importance of prioritizing dynamic vs. static lung-distending pressures to prevent VILI and P-SILI is uncertain; our protocol focused on dynamic lung-distending pressure which may reflect resistive pressures of uncertain pathophysiological significance. However, dynamic pressures may more accurately reflect regional lung distention [23]. Fourth, the durability of achieving LDP targets over a more prolonged period of time (days) remains unknown. Our present goal was to describe their short-term physiological effects, but respiratory effort may vary over time [24] and ultimately more prolonged monitoring and intervention will be needed to ensure patients remain within lung and diaphragm-protective targets over prolonged periods of time. Clinical trials testing the net clinical benefit of optimizing respiratory effort for lung and diaphragm protection using a systematic approach to integrate ventilatory support and sedation are needed.

Conclusions

Respiratory effort is frequently absent or excessive in patients with AHRF. A systematic approach to adjusting ventilation and sedation combined with partial neuromuscular blockade can achieve lung- and diaphragm-protective targets in most patients.

Abbreviations

AHRF: Acute hypoxemic respiratory failure; LDP: Lung- and diaphragm-protection; PEEP: Positive end-expiratory pressure; VV-ECMO: Veno-venous extracorporeal membrane; pNMBA: Partial neuromuscular blockade; $\Delta P_{L,dyn}$: Dynamic transpulmonary driving pressure; ΔP_{es} : Esophageal pressure; ICU: Intensive care unit; Edi: Diaphragm electrical activity; OR: Odds ratio; CrI: Credible interval; IQR: Interquartile range; COPD: Chronic obstructive pulmonary disease; SOFA: Sequential organ failure assessment; SAS: Sedation-agitation score; V_T : Tidal volume; PBW: Predicted body weight; ECLS: Extracorporeal life support.

Supplementary Information

The online version contains supplementary material available at <https://doi.org/10.1186/s13054-022-04123-9>.

Additional file 1. Supplemental description of methods and supplemental results.

Acknowledgements

Not applicable.

Author contributions

ECG conceived the study. ECG, LDS, EF, LB, SK, ASS, LJB, and NDF designed the study. JD, SF, JW, and ECG participated in the acquisition and interpretation of the data. JD and ECG conducted the analysis and drafted the manuscript. All authors read and approved the final manuscript.

Funding

ECG is supported by an Early Career Investigator Award from the Canadian Institutes of Health Research. The study was also supported by a grant from the PSI Foundation. The funding body had no role in the design of the study and collection, analysis, and interpretation of data and in writing the manuscript.

Availability of data and materials

The datasets used and/or analysed during the current study are available from the corresponding author on reasonable request.

Declarations

Ethical approval and consent to participate

The study was approved by the University Health Network Research Ethics Board (#18-5644). Informed consent to participate in the study was obtained for all patients enrolled in the study. The study was carried out following standard hospital regulations regarding mechanical ventilation strategies for patients with acute respiratory failure.

Consent for publication

Not applicable.

Competing interests

The authors declare that they have no competing interests.

Author details

¹Interdepartmental Division of Critical Care Medicine, University of Toronto, Toronto, Canada. ²Division of Respiriology, Department of Medicine, University Health Network, Toronto, Canada. ³Department of Respiratory Therapy, University Health Network, Toronto, Canada. ⁴Department of Mechanical and Industrial Engineering, University of Toronto, Toronto, Canada. ⁵Heart Institute (Incor), Hospital das Clínicas da Faculdade de Medicina da Universidade de São Paulo, São Paulo, Brazil. ⁶Department of Pharmacy, Mount Sinai Hospital, Toronto, Canada. ⁷Leslie Dan Faculty of Pharmacy, University of Toronto, Toronto, Canada. ⁸Department of Physical Therapy, University of Toronto, Toronto, Canada. ⁹Department of Surgery, University of Toronto, Toronto, Canada. ¹⁰Keenan Centre for Biomedical Research, Li Ka Shing Knowledge Institute, St. Michael's Hospital, Toronto, Canada. ¹¹Toronto General Hospital Research Institute, 9-MaRS-9024, 585 University Avenue, Toronto, ON M5G 2N2, Canada. ¹²Institute for Health Policy, Management, and Evaluation, University of Toronto, Toronto, Canada. ¹³Department of Physiology, University of Toronto, Toronto, Canada.

Received: 30 May 2022 Accepted: 8 August 2022

Published online: 29 August 2022

References

- Brower RG, Matthay MA, Morris A, Schoenfeld D, Thompson T. Ventilation with lower tidal volumes as compared with traditional tidal volumes for acute lung injury. *New Engl J Med*. 2000;343:812–4.
- Goligher EC, Brochard LJ, Reid WD, Fan E, Saarela O, Slutsky AS, et al. Diaphragmatic myotrauma: a mediator of prolonged ventilation and poor patient outcomes in acute respiratory failure. *Lancet Respir Med*. 2018;7:90–8.
- Goligher EC, Dres M, Fan E, Rubenfeld GD, Scales DC, Herridge MS, et al. Mechanical ventilation-induced diaphragm atrophy strongly impacts clinical outcomes. *Am J Resp Crit Care*. 2018;197:204–13.
- Goligher EC, Fan E, Herridge MS, Murray A, Vorona S, Brace D, et al. Evolution of diaphragm thickness during. Mechanical ventilation impact of inspiratory effort. *Am J Resp Crit Care*. 2015;192:1080–8.

5. Goligher EC, Dres M, Patel BK, Sahetya SK, Beitler JR, Telias I, et al. Lung and diaphragm-protective ventilation. *Am J Resp Crit Care*. 2020.
6. Vaporidi K, Akoumianaki E, Telias I, Goligher EC, Brochard L, Georgopoulos D. Respiratory drive in critically ill patients. Pathophysiology and clinical implications. *Am J Resp Crit Care*. 2020;201:20–32.
7. Brochard L, Slutsky A, Pesenti A. Mechanical ventilation to minimize progression of lung injury in acute respiratory failure. *Am J Resp Crit Care*. 2017;195:438–42.
8. Vries HJ de, Jonkman AH, Grooth HJ de, Duitman JWille, Girbes ARJ, Ottenheim CAC, et al. Lung- and diaphragm-protective ventilation by titrating inspiratory support to diaphragm effort: a randomized clinical trial. *Crit Care Med*. 2022;50:192–203.
9. Morais CCA, Koyama Y, Yoshida T, Plens GM, Gomes S, Lima CAS, et al. High positive end-expiratory pressure renders spontaneous effort noninjurious. *Am J Resp Crit Care*. 2018;197:1285–96.
10. Crotti S, Bottino N, Ruggeri GM, Spinelli E, Tubiolo D, Lissoni A, et al. Spontaneous breathing during extracorporeal membrane oxygenation in acute respiratory failure. *Anesthesiology*. 2017;126:678–87.
11. Zampieri FG, Casey JD, Shankar-Hari M, Harrell FE, Harhay MO. Using Bayesian methods to augment the interpretation of critical care trials: an overview of theory and example reanalysis of the alveolar recruitment for acute respiratory distress syndrome trial. *Am J Resp Crit Care*. 2021;203:543–52.
12. B G, J G, I A, S. B. rstanarm: Bayesian applied regression modeling via Stan. R package version 2.21.1 [Internet]. 2020. Available from: <https://mc-stan.org/rstanarm>
13. Goligher EC, Jonkman AH, Dianti J, Vaporidi K, Beitler JR, Patel BK, et al. Clinical strategies for implementing lung and diaphragm-protective ventilation: avoiding insufficient and excessive effort. *Intens Care Med*. 2020;1–13.
14. Vaschetto R, Cammarota G, Colombo D, Longhini F, Grossi F, Giovanniello A, et al. Effects of propofol on patient-ventilator synchrony and interaction during pressure support ventilation and neurally adjusted ventilatory assist. *Crit Care Med*. 2014;42:74–82.
15. Kress JP, Pohlman AS, O'Connor MF, Hall JB. Daily interruption of sedative infusions in critically ill patients undergoing mechanical ventilation. *New Engl J Med*. 2000;342:1471–7.
16. Mehta S, Burry L, Cook D, Fergusson D, Steinberg M, Granton J, et al. Daily sedation interruption in mechanically ventilated critically ill patients cared for with a sedation protocol: a randomized controlled trial. *JAMA*. 2012;308:1985–92.
17. Dzierba AL, Khalil AM, Derry KL, Madahar P, Beitler JR. Discordance between respiratory drive and sedation depth in critically ill patients receiving mechanical ventilation. *Crit Care Med*. 2021.
18. Jackson JC, Ely EW, Morey MC, Anderson VM, Denne LB, Clune J, et al. Cognitive and physical rehabilitation of intensive care unit survivors. *Crit Care Med*. 2012;40:1088–97.
19. Devlin J, Fraser G, Ely E, Kress J, Skrobik Y, Dasta J. Pharmacological management of sedation and delirium in mechanically ventilated ICU patients: remaining evidence gaps and controversies. *Semin Resp Crit Care*. 2013;34:201–15.
20. Pellegrini M, Hedenstierna G, Roneus A, Segelsjö M, Larsson A, Perchiizzi G. The diaphragm acts as a brake during expiration to prevent lung collapse. *Am J Resp Crit Care*. 2017;195:1608–16.
21. Langer T, Santini A, Bottino N, Crotti S, Batchinsky AI, Pesenti A, et al. "Awake" extracorporeal membrane oxygenation (ECMO): pathophysiology, technical considerations, and clinical pioneering. *Crit Care*. 2016;20:150.
22. Crotti S, Bottino N, Spinelli E. Spontaneous breathing during veno-venous extracorporeal membrane oxygenation. *J Thorac Dis*. 2018;10:5661–9.
23. Yoshida T, Amato MBP, Kavanagh BP. Understanding spontaneous vs. ventilator breaths: impact and monitoring. *Intens Care Med*. 2018;44:2235–8.
24. DiMussi R, Spadaro S, Volta CA, Bartolomeo N, Trerotoli P, Staffieri F, et al. Continuous assessment of neuro-ventilatory drive during 12 h of pressure support ventilation in critically ill patients. *Crit Care*. 2020;24:652.

Publisher's Note

Springer Nature remains neutral with regard to jurisdictional claims in published maps and institutional affiliations.

Ready to submit your research? Choose BMC and benefit from:

- fast, convenient online submission
- thorough peer review by experienced researchers in your field
- rapid publication on acceptance
- support for research data, including large and complex data types
- gold Open Access which fosters wider collaboration and increased citations
- maximum visibility for your research: over 100M website views per year

At BMC, research is always in progress.

Learn more biomedcentral.com/submissions

