

REVIEW

Open Access



Metabolic differences in women with premature ovarian insufficiency: a systematic review and meta-analysis

Wang-Yu Cai^{1†}, Xi Luo^{2†}, Wei Wu¹, Jianyuan Song³, Ning-Ning Xie¹, Cuicui Duan⁴, Xiao-Ke Wu^{5,6} and Jian Xu^{1,4*}

Abstract

Objective: This review aimed to investigate the metabolic profile of women with premature ovarian insufficiency (POI) compared relative to women with normal ovarian functioning.

Methods: A systematic search of PubMed, EMBASE, and the Web of Science for observational studies published up until the 6th of July 2021 that compared the metabolic profile of POI women with a healthy control group were assessed. Mean differences (MD) and 95% confidence interval (CI) were pooled using the fixed or random effect models.

Results: A total of 21 studies involving 1573 women with POI and 1762 control women were included. POI patients presented significantly higher waist circumference, total cholesterol, low-density lipoprotein, high-density lipoprotein, triglycerides, and fasting glucose. Additionally, POI patients had marginally higher insulin level. However, the differences in systolic, and diastolic blood pressure were non-significant relative to the control group.

Conclusions: POI is associated with alterations in certain metabolic parameters compared to control women. This finding highlights the importance of early screening and the lifelong management of metabolic health for women with POI.

Keywords: Premature ovarian insufficiency, Metabolic, Lipid, Glucose, Systematic review

Background

Premature ovarian insufficiency (POI) is described as amenorrhea due to loss of ovarian function before the age of 40 [1, 2]. Additionally, it is characterized by abnormally increased levels of gonadotrophins and decreased levels of estrogen [3]. Although the cause of POI is unclear, it is hypothesized that hormonal and metabolic abnormalities, infections, environmental exposures, medical treatments, endocrinology disorders, and autoimmune

diseases may all contribute to this condition [4]. Most women with POI develop symptoms of estrogen deficiency, including vasomotor flushes, vaginal dryness, sexual dysfunction, osteoporosis, and long-term cardiovascular disease [5, 6]. POI is also associated with lower health-related quality of life compared to normal ovarian controls. Further, these patients require additional emotional support from clinicians [7, 8].

It has been suggested that natural and surgical menopause are associated with a higher incidence of a composite of cardiovascular disease (CVD) [9]. Previous systematic reviews have also revealed that women with premature or early menopause exhibit an increased risk of developing and dying from ischaemic heart disease and total CVD [10]. Accumulating studies have shown that women with POI may also be at increased risk of

[†]Wang-Yu Cai and Xi Luo are share first authorship.

*Correspondence: xuj@zju.edu.cn

¹ Fourth Affiliated Hospital, Zhejiang University School of Medicine, No. 1 Shang Cheng Avenue, Yiwu 322000, Zhejiang, China
Full list of author information is available at the end of the article



© The Author(s) 2022. **Open Access** This article is licensed under a Creative Commons Attribution 4.0 International License, which permits use, sharing, adaptation, distribution and reproduction in any medium or format, as long as you give appropriate credit to the original author(s) and the source, provide a link to the Creative Commons licence, and indicate if changes were made. The images or other third party material in this article are included in the article's Creative Commons licence, unless indicated otherwise in a credit line to the material. If material is not included in the article's Creative Commons licence and your intended use is not permitted by statutory regulation or exceeds the permitted use, you will need to obtain permission directly from the copyright holder. To view a copy of this licence, visit <http://creativecommons.org/licenses/by/4.0/>. The Creative Commons Public Domain Dedication waiver (<http://creativecommons.org/publicdomain/zero/1.0/>) applies to the data made available in this article, unless otherwise stated in a credit line to the data.

cardiovascular disease, and the risk may be explained in part by metabolic and endothelial changes facilitated by estrogen deprivation [6]. However, the underlying mechanism between the elevated risk of CVD and women with POI still needs answers.

Thus far, some case–control studies have reported differences in certain metabolic parameters between women with POI and healthy controls; however, no comprehensive review exists on this topic. Within this context, this review aims to provide comprehensive guidance and assessment practices for POI through a systematic review and meta-analysis of the metabolic profiles of POI patients relative to healthy controls. Further, we also aim to discuss the metabolic functioning and its potential contribution to POI.

Methods

Search strategy

This systematic review was constructed according to the Preferred Reporting Items for Systematic Reviews and Meta-analyses (PRISMA) [11] (Supplementary table 1). A protocol was registered on INPLASY (INPLASY2021100091). Using the combination of keywords provided in Supplementary Table 2, major electronic databases including PubMed, Embase, and Web of Science were used to source relevant literature published up until the 6th of July 2021. Key search terms included: “premature ovarian insufficiency”, “metabolic”, and “case–control”. References from all included studies were also assessed to identify relevant articles not captured by the electronic searches.

Inclusion and exclusion criteria

Observational studies that compared at least one of the metabolic outcomes of interest in patients with POI to control women with normal ovarian function were included. Metabolic parameters included waist circumference (WC), systolic blood pressure (SBP), diastolic blood pressure (DBP), fasting glucose (FG), insulin (INS), total cholesterol (TC), high-density lipoprotein (HDL), low-density lipoprotein (LDL), and triglycerides (TG). Review articles, opinions, book chapters, letters, published abstracts, animal studies, case reports and studies with no suitable control group were excluded. Only articles with English language were included.

Study selection

Two authors (WYC and XL) independently scrutinized the titles and abstracts of all studies to identify relevant studies according to the inclusion and exclusion criteria. Full manuscripts of the relevant studies considered for inclusion were then carefully reviewed to include eligible

studies. Any disagreement between the two authors was resolved by a third author (JX).

Data extraction

Two authors (WYC and XL) independently extracted data using the following form: the first author, year of publication, geographic region, sample size, study design, age of case and control, body mass index (BMI) of case and control, follicle-stimulating hormone (FSH) level, estradiol (E2) level, outcome measures and confounding factors controlled for (including but not limited to hormone therapy) were recorded. Where a study with two or more publications was identified, only the most comprehensive or the most recent version was included. For continuous measures, mean and standard deviation was first recorded, for publications that only reported median and interquartile range, the mean and standard deviation was estimated [12].

Quality assessment

The quality of eligible observational studies was assessed using the Newcastle–Ottawa scale (NOS) [13]. The NOS assesses studies by scoring three aspects: viz selection, comparability, and exposure, The NOS total is scored out of 9 (the higher the score, the better). Each article was awarded a score out of four for selection bias (adequate definition of case, representativeness of the case, selection of control, definition of control), two for comparability (comparability between case and control), and four for bias in the exposure (ascertainment of exposure, consistency of the method of ascertainment for case and control, and non-response rate). The quality of studies was defined as high with NOS scores >6, medium 4–6, and low <4.

Statistical analyses

Review Manager version 5.4.1 and Stata version 8.0 were used to analyze the extracted data. Mean difference (MD) with 95% confidence interval (CI) was pooled to measure effect size. The heterogeneity of studies was measured using the I^2 index: below 40% indicated no heterogeneity; more than 40% indicated heterogeneity existed. The fixed-effects model was used when no heterogeneity was observed, and the random-effects model was used when heterogeneity existed. Publication bias was assessed using funnel plot asymmetry and Egger's line regression test. To measure the effect of confounders on the effect size of potential moderators, subgroup analysis and meta-regression were performed. To confirm the robustness of the results, sensitivity analysis was performed by excluding each one included study. A P-value less than 0.05 was considered statistically significant.

Results

According to the inclusion and exclusion criteria, a total of 21 studies including 1573 women with POI and 1762 control women were utilized in this review (Fig. 1). Following title and abstract screening of the literature search results, 11,483 total studies were assessed of which 653 were duplicates and 10,737 were considered irrelevant. Of the remaining 93 records, 73 records were excluded due to abstract ($n=16$), no control group ($n=14$), no metabolic parameters ($n=36$), the presence of review articles ($n=4$), replicates ($n=1$), not in the English language ($n=2$) (Fig. 1). An additional study was identified through the assessment of the article references. Therefore, a total of 21 studies were eligible for data extraction and were included in the present meta-analysis [14–34].

Characteristics of included studies

The characteristics of the reviewed studies are presented in Table 1. Among the studies assessed, 8 were conducted in the Middle East, 8 in Europe, 3 in East Asia, one in Africa, and one in Latin America. All studies had a case–control design. The participant’s mean age ranged from 26.4 to 49.9 years. Thirteen studies diagnosed POI by a cutoff of 40 IU/L for FSH [15–17, 19–22, 24, 25, 28, 29, 31, 32], four studies used a cutoff of 25 IU/L [23, 27, 30, 33] and 4 studies didn’t report [14, 18, 26, 34]. Nine studies reported that the POI women had normal

chromosomal constitutions [16, 21, 23, 24, 27, 30–33]. WC, SBP and DBP were assessed in 5 [16, 20, 21, 25, 28], 6 [16, 17, 20, 24, 29, 34], and 6 [16, 17, 20, 24, 29, 34] of the studies, respectively. TC, HDL, LDL, TG, FG and INS were measured in 17 [14–26, 29, 32–34], 14 [14, 16–26, 29, 34], 14 [14, 16–26, 29, 34], 15 [14–19, 21–26, 29, 32, 34], 14 [15–19, 21, 23, 24, 26, 29–32, 34], and 7 [16, 19, 26, 27, 29–31] of the studies, respectively. Quality assessment data of the reviewed studies are presented in Table 2, and all included studies had medium to high quality.

Waist circumference

WC was measured in 5 of the studies which included 449 POI patients and 779 healthy controls (Fig. 2). Meta-analysis showed higher levels of WC among POI women compared to the control group (MD=1.78 [0.74 to 2.83], $P=0.0008$; $I^2=31\%$). The funnel plot showed no obvious asymmetry, with no evidence of publication bias (Supplementary Fig. 1). The Egger’s line regression test did not indicate publication bias ($t=-0.87$, $P=0.447$). Additionally, sensitivity analysis did not identify any single study which altered the effect size.

Blood pressure

SBP and DBP were measured in 6 of the included studies which included 273 POI patients and 480 healthy women.

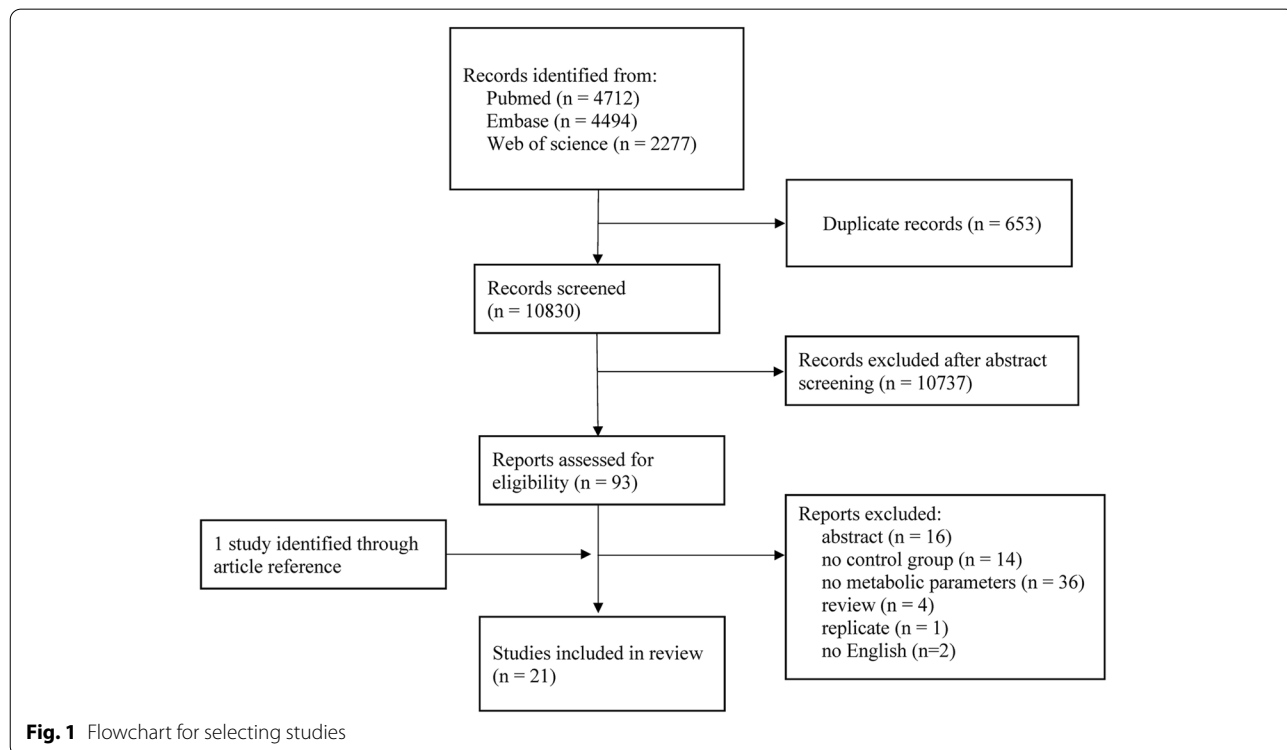


Table 1 Characteristics of included studies

Author/year published	Country	POI	Control			Outcome measurements			Matched variables		
			Number of cases	Age of cases	BMI	FSH	E2	Number of controls		Age	BMI
AbdulAzeez 2018 [14]	Nigeria	50	26.4 ± 5.2	Not reported	23.0 ± 15.0	101.8 ± 42.3	40	26.4 ± 5.4	Not reported	TC, TG, HDL, LDL	Age
Agaçayak 2016 [15]	Turkey	30	28.9 ± 6.8	24.1 ± 4.2	60 ± 20	17.0 ± 7.2	30	29.2 ± 5.0	23.2 ± 3.3	FG, TC, TG	Age, ethnic
Ates 2014 [16]	Turkey	56	35.23 ± 4.58	25.79 ± 4.10	75.33 ± 39.73	47.44 ± 49.48	59	35.47 ± 4.49	26.09 ± 3.80	WC, SBP, DBP, TC, TG, HDL, LDL, FG, INS	Age
Bozkaya 2020 [17]	Turkey	34	30.94 ± 5.58	25.90 ± 4.22	56.68 ± 28.84	32.32 ± 34.70	35	28.53 ± 5.09	24.47 ± 3.89	SBP, DBP, FG, TC, TG, HDL, LDL	Age, ethnic
Cekici 2021 [18]	Turkey	66	32.5 ± 4.7	23.6 ± 4.3	75.1 ± 34.9	5.4 ± 1.4	73	31.0 ± 4.9	22.7 ± 5.3	FG, TC, TG, HDL, LDL	Age
Czyzyk 2017 [19]	Poland	23	31 ± 7	24.37 ± 4.35	95.29 ± 48.36	29.26 ± 31.29	18	31 ± 3	24.44 ± 3.18	INS, FG, TC, TG, HDL, LDL	Age, BMI
Daan 2017 [20]	Netherlands	83	49.9 ± 4.7	25.1 ± 4.1	NA	5.01 [358.49]	267	50.9 ± 3.1	26.9 ± 4.9	WC, SBP, DBP, TC, HDL, LDL	Age, BMI
Goldmeier 2014 [21]	Brazil	17	37 ± 9	26 ± 5	53.9 ± 24.15	17.7 ± 14.9	15	38 ± 9	26 ± 3	WC, FG, TG, LDL, HDL, TC	Age
Gulhan 2012 [22]	Turkey	47	36.8 ± 1.8	25.9 ± 4.9	94.9 ± 36.4	27.9 ± 28.3	60	36.0 ± 2.3	24.8 ± 4.6	TC, TG, HDL, LDL	Age
Huang 2021 [23]	China	303	34.78 ± 5.42	21.44 ± 2.75	73.23 (51.19-92.85)	7.64 (5.00-28.10)	303	34.68 ± 4.80	21.25 ± 2.92	TC, TG, HDL, LDL, FG	Age
Kalantaridou 2004 [24]	Greece	18	35.4 ± 5.5	24.2 ± 3.1	78.9 ± 22.9	37 ± 24	20	35.0 ± 3.6	23.0 ± 2.6	SBP, DBP, FG, TC, TG, HDL, LDL	Age, BMI
Knauff 2008 [25]	Netherlands	90	33.8 ± 5.6	24.9 ± 4.3	79.5 ± 42.3	38.14 ± 41.41	198	30.3 ± 2.9	24.3 ± 4.8	WC, TC, TG, HDL, LDL	Age
Kulaksizoglu 2013 [26]	Turkey	43	36.83 ± 2.72	30.33 ± 5.59	48.55 ± 16.63	12.62 ± 9.13	33	37.15 ± 1.88	29.62 ± 3.48	FG, INS, TC, TG, HDL, LDL	Age, BMI
Kunicki 2018 [27]	Poland	98	31.48 ± 6.07	23.78 ± 3.563	69.71 ± 25.43	22.34 ± 31.69	78	27.78 ± 5.25	22.20 ± 2.94	INS	Age, BMI
Luo 2018 [28]	China	240	31.58 ± 6.83	21.11 ± 2.57	92.24 ± 33.76	20.46 ± 9.97	240	31.32 ± 6.62	20.90 ± 2.38	WC	Age, weight
Podfigurna 2018 [29]	Poland	56	30.7 ± 6.9	23.54 ± 4.55	97.57 ± 42.30	21.45 ± 43.07	68	27.3 ± 4.5	28.62 ± 5.30	SBP, DBP, FG, INS, TC, TG, HDL, LDL	Age, weight
Podfigurna 2020 [30]	Poland	132	31.86 ± 7.75	23.68 ± 4.42	100.14 ± 36.93	13.43 ± 18.91	17	23.21 ± 5.86	20.71 ± 5.15	FG, INS	Age, weight
Szlendak-Sauer 2016 [31]	Poland	98	30 ± 6.3	23.5 ± 2.8	73.9 ± 26.8	14.5 ± 8.4	75	29.4 ± 4	23.2 ± 2.5	INS, FG	Age, gravidity, BMI
Tunc 2017 [32]	Turkey	30	28.9 ± 6.8	25.9 ± 4.1	60.09 ± 20.01	33.75 ± 39.70	30	29.2 ± 5.0	24.1 ± 4.2	TC, TG, FG	Age, gravidity, BMI
Xu 2019 [33]	China	33	Not reported	Not reported	59.56 ± 32.67	Not reported	72	Not reported	Not reported	TC	Age
Yorgun 2012 [34]	Turkey	26	37.5 ± 10.1	26.0 ± 3.6	47.9 ± 17.5	25.0 ± 15.6	31	37.5 ± 9.0	23.3 ± 1.3	SBP, DBP, TC, TG, LDL, HDL, FG	Age

The data are presented as mean ± standard deviation, median (quartile 1, quartile 3) and median [range]

BMI Body mass index, FSH Follicle-stimulating hormone, E2 Estradiol, WC Waist circumference, FG Fasting blood glucose, INS Insulin, SBP Systolic blood pressure, DBP Diastolic blood pressure, TC Total cholesterol, HDL High-density lipoprotein, LDL Low-density lipoprotein and TG Triglycerides

Table 2 Quality of included studies

Author/year published	Selection			Comparability			Exposure			Total
	Adequate Case Definition	Representative of cases	Selection of controls	Definition of Controls	Age	Other factors	Ascertainment of exposure	Same ascertainment	Non-Response Rate	
AbdulAzeez 2018 [14]	*				*		*	*	*	4
Ağaçayak 2016 [15]	*				*	*	*	*	*	6
Ates 2014 [16]	*	*		*	*		*	*	*	7
Bozkaya 2020 [17]	*			*	*		*	*	*	5
Cekici 2021 [18]	*	*		*	*		*	*	*	6
Czyzyk 2017 [19]	*			*	*	*	*	*	*	7
Daan 2017 [20]	*			*	*		*	*	*	5
Goldmeier 2014 [21]	*			*	*		*	*	*	6
Gulhan 2012 [22]	*			*	*		*	*	*	6
Huang 2021 [23]	*			*	*		*	*	*	6
Kalantaridou 2004 [24]	*			*	*	*	*	*	*	7
Knauff 2008 [25]	*	*		*	*		*	*	*	5
Kulaksizoglu 2013 [26]	*			*	*		*	*	*	5
Kunički 2018 [27]	*			*	*		*	*	*	5
Luo 2018 [28]	*			*	*	*	*	*	*	6
Podfigurna 2020 [29]	*			*	*	*	*	*	*	7
Podfigurna 2018 [30]	*			*	*	*	*	*	*	7
Szlendak-Sauer 2016 [31]	*			*	*		*	*	*	5
Tunc 2017 [32]	*			*	*	*	*	*	*	7
Xu 2019 [33]	*			*	*		*	*	*	5
Yorgun 2012 [34]	*	*		*	*		*	*	*	6

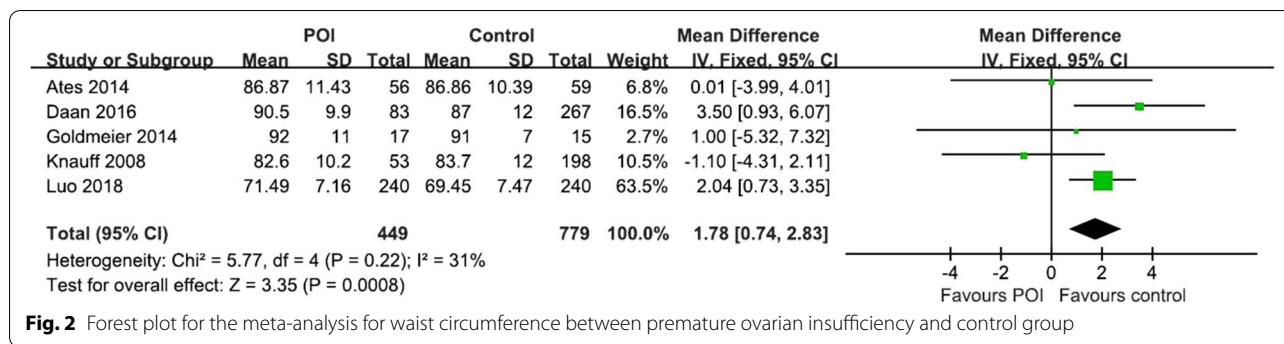


Fig. 2 Forest plot for the meta-analysis for waist circumference between premature ovarian insufficiency and control group

SBP (MD = -0.06 [-2.76 to 2.64], *P* = 0.96; I² = 49%) and DBP (MD = -0.43 [-3.13 to 2.27], *P* = 0.76; I² = 67%) were not statistically different between POI women and control women (Fig. 3). The funnel plots showed no obvious asymmetry, with no evidence of publication bias (Supplementary Figs. 2 and 3). The Egger’s line regression test did not indicate publication bias for SBP and DBP (*t* = 2.44, *P* = 0.092; *t* = -0.87, *P* = 0.446). Additionally, sensitivity analysis did not identify any single study which altered the effect size.

Glucose and insulin

Meta-analysis of 14 studies revealed a significantly higher level of FG (MD = 4.09 [2.13 to 6.04], *P* < 0.0001; I² = 73%) in patients with POI (*n* = 932)

compared to the controls (*n* = 807) (Fig. 4). INS (MD = 1.80 [-0.06 to 3.67], *P* = 0.06; I² = 89%) was measured in 7 of the studies and was marginally higher among patients with POI (*n* = 506) than controls (*n* = 348) (Fig. 4). The funnel plots showed no obvious asymmetry, with no evidence of publication bias (Supplementary Figs. 4 and 5). The Egger’s line regression test did not indicate publication bias for FG and INS (*t* = 2.44, *P* = 0.092; *t* = 1.85, *P* = 0.138). Furthermore, sensitivity analysis did not identify any single study which altered the effect size.

Serum lipid

Meta-analysis of 17 studies revealed a significantly higher level of TC (MD = 17.60 [10.83 to 24.38],

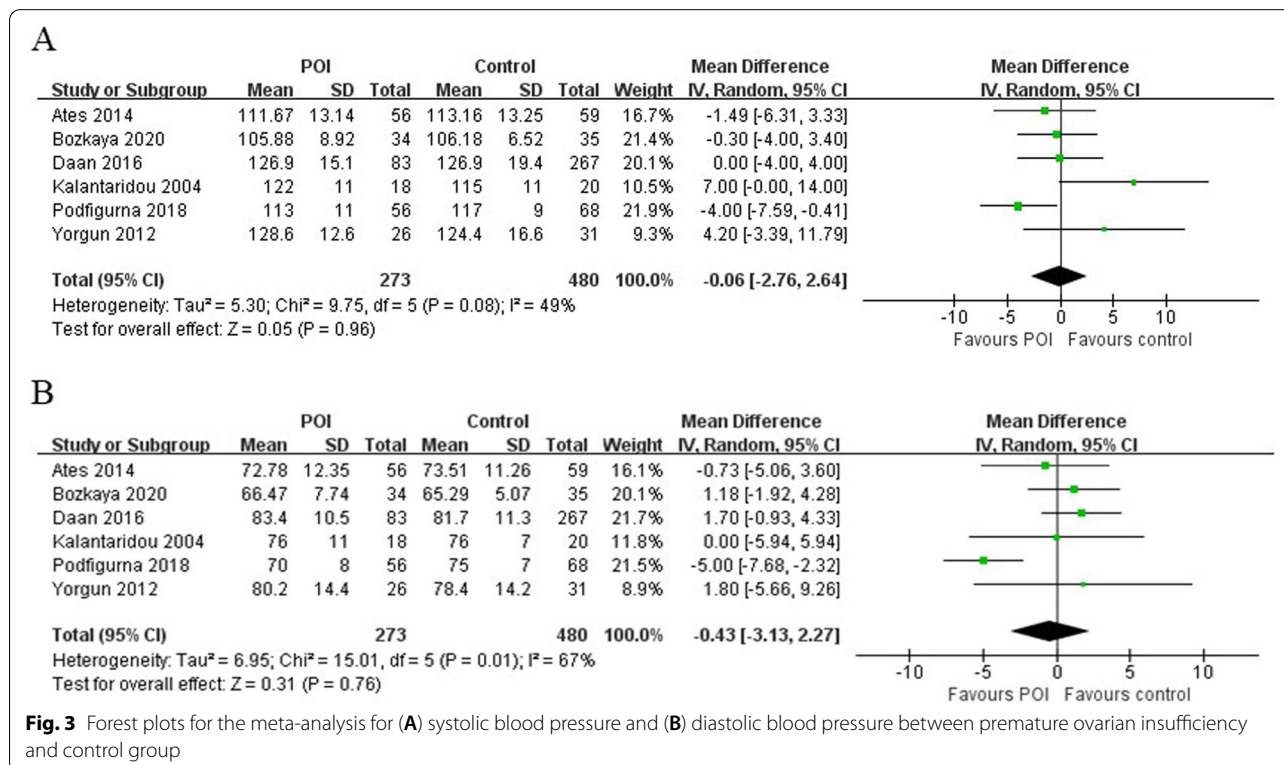
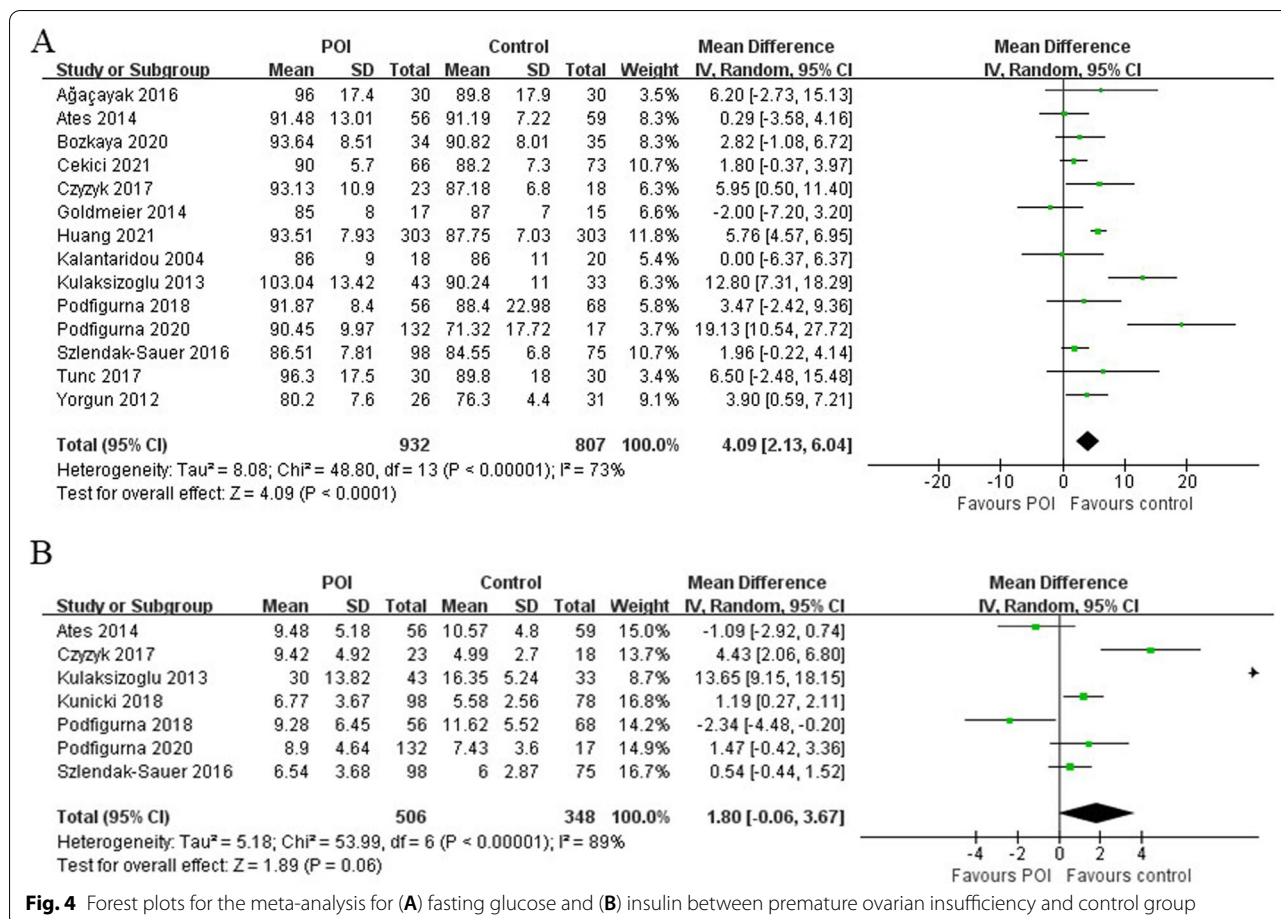


Fig. 3 Forest plots for the meta-analysis for (A) systolic blood pressure and (B) diastolic blood pressure between premature ovarian insufficiency and control group



$P = < 0.00001$; $I^2 = 80\%$) in patients with POI ($n = 1005$) compared to the controls ($n = 1352$) (Fig. 5). Meta-analysis of 14 studies revealed a significantly higher level of HDL (MD = 5.95 [1.19 to 10.71], $P = 0.01$; $I^2 = 92\%$) in patients with POI ($n = 912$) compared to the controls ($n = 1230$) (Fig. 5). Meta-analysis of 14 studies revealed a significantly higher level of LDL (MD = 9.32 [3.60 to 15.03], $P = 0.001$; $I^2 = 81\%$) in patients with POI ($n = 912$) compared to the controls ($n = 1230$) (Fig. 5). Meta-analysis of 15 studies revealed a significantly higher level of TG (MD = 11.82 [2.67 to 20.96], $P = 0.01$; $I^2 = 77\%$) in patients with POI ($n = 889$) compared to the controls ($n = 1013$) (Fig. 5). The funnel plots showed no obvious asymmetry, with no evidence of publication bias, except for HDL (Supplementary Figs. 6, 7, 8 and 9). The Egger's line regression test did not indicate publication bias for TC, LDL and TG ($t = 1.58$, $P = 0.134$; $t = 0.64$, $P = 0.537$; $t = 0.01$, $P = 0.991$); however, a potential publication bias for HDL ($t = 3.48$, $P = 0.005$) was noted. Sensitivity analysis did not identify any single study which altered the effect size.

Subgroup analysis and meta-regression

Subgroup analyses were performed in studies with POI women of normal mean BMI ($20 < \text{BMI} < 25$). Meta-analysis of 2 studies revealed WC in patients with POI ($n = 293$) were not different compared to the controls ($n = 438$) (MD = 0.83 [-2.17 to 3.82], $P = 0.59$; $I^2 = 68\%$). Meta-analysis of 7 studies revealed a significantly higher level of TC in patients with POI ($n = 586$) compared to the controls ($n = 710$) (MD = 17.81 [6.59 to 29.04], $P = 0.002$; $I^2 = 89\%$). Meta-analysis of 6 studies revealed a significantly altered level of LDL in patients with POI ($n = 556$) compared to the controls ($n = 680$) (MD = 9.65 [0.64 to 18.65], $P = 0.04$; $I^2 = 88\%$). Meta-analysis showed HDL (MD = 4.06 [-2.63 to 10.74], $P = 0.23$; $I^2 = 91\%$) and TG (MD = 5.66 [-2.80 to 14.12], $P = 0.19$; $I^2 = 66\%$) were not different in women with POI compared to control women. Meta-analysis of 8 studies revealed a significantly altered level of FG in patients with POI compared to the controls (MD = 4.42 [1.91 to 6.93], $P = 0.0005$; $I^2 = 76\%$). INS was measured in 5 of the studies and was not different among patients with POI than controls (MD = 0.99

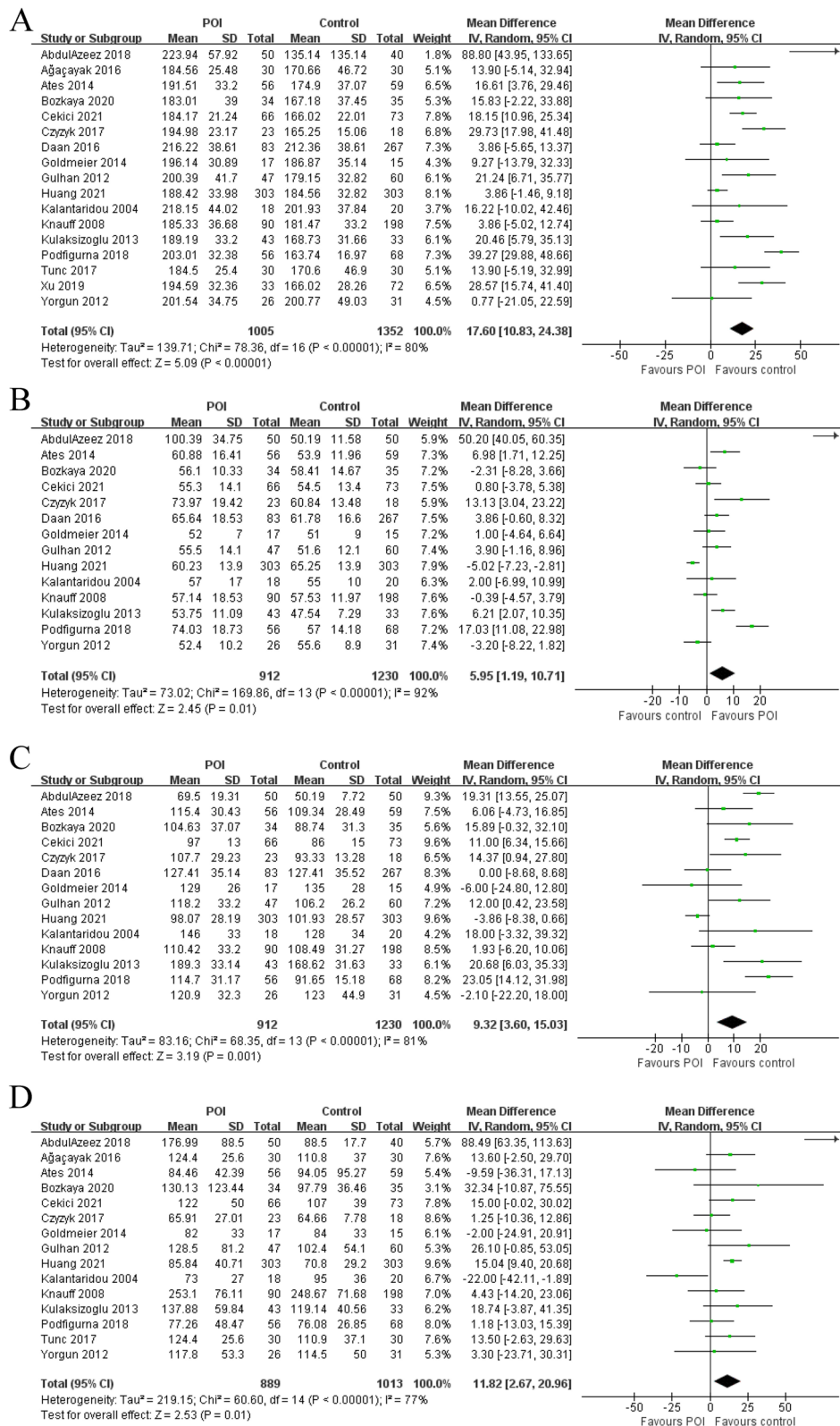


Fig. 5 Forest plots for the meta-analysis for (A) total cholesterol, (B) high-density lipoprotein, (C) low-density lipoprotein and (D) triglycerides between premature ovarian insufficiency and control group

[-0.43 to 2.41], $P=0.17$; $I^2=79\%$). These suggested that metabolic differences were significant independent of overweight or obesity.

Univariate meta-regression suggested that estradiol level was associated with the effect size of HDL (coefficient: 0.42 (0.20 to 0.65), $P=0.001$) and TG (coefficient: 0.60 (0.09 to 1.12), $P=0.026$), and FSH was associated with the effect size of TG (coefficient: -0.68 (-1.23 to -0.12), $P=0.021$) (Supplementary Table 3). These suggested that hormone levels had significant impact on the effect size.

Discussion

Together, the meta-analysis data described in this review highlights the unfavorable metabolic profile observed in POI patients relative to healthy control women including higher WC, FG, TC, LDL, and TG. Since these parameters are closely related to the long-term CVD risk, it is necessary to have early screening and management of metabolic health of women with POI.

First explanation of the association between metabolic abnormalities and POI was sex hormone. In agreement with this explanation, our meta-regression results indicated that hormone levels are associated with the metabolic parameters. Hormonal changes during the menopause transition may facilitate an unfavorable metabolic profile that is characterized by increased TC, LDL, TG, and decreased HDL [35]. Estrogen tends to have a protective role in insulin resistance and metabolic homeostasis [36, 37]. Prolonged estrogen deprivation is associated with an increased estimated risk of CVD in women with POI [38]. Estrogen deficiency promotes metabolic dysfunction predisposing patients to obesity, metabolic syndrome, and type 2 diabetes [37]. Mouse studies also demonstrated that ovariectomy impairs hepatic glucose and lipid metabolism and alters the gut microbiota [39]. Additionally, FSH and its receptors have been reported to have an association with metabolic health [40] and have been implicated in the induction of metabolic diseases through multiple pathways including adipose accumulation, and contribute to obesity, diabetes, and non-alcoholic fatty liver disease [41]. Together, POI may result in a similarly altered metabolic profile compared to women with normal ovarian function due to estrogen deficiency. Therefore, these results support the clinical strategy of prescribing additional hormone therapy to improve metabolic parameters in women with POI and improve health outcomes. However, analysis between POI women using and not using hormone therapy was not available because most included studies didn't mention whether the women used hormone therapy. Future studies should focus on the effect of hormone therapy on metabolic parameters of women with POI.

Second, steroidogenesis may also contribute to the metabolic abnormalities observed in women with POI. Steroidogenesis is a process in which ovary produces estrogen from cholesterol. The oocyte relies on serum lipids from the maternal circulation to provide cholesterol esters for granulosa cell steroidogenesis. Failure to produce estrogen at a physiological level may result in the accumulation of substrate lipids in circulation. Interestingly, we found that women with POI had significantly higher levels of HDL compared to control women, possibly because that HDL is the main transporter of cholesterol to granulosa cells during steroidogenesis [42]. We hypothesize that women with POI may have more lipid accumulation in circulation due to the decreased synthesis of estrogen.

There were also other confounders that might influence our results. First, not all confounders were fully adjusted in included studies. Previous studies reported that age and BMI are strongly associated with lipid level [43, 44]. However, age and BMI were not all statistically insignificant between POI and control women among included studies. Other confounders that may affect a person's metabolic profile, such as smoking [45], hormone therapy [46], lifestyle [47] were not evaluated in most studies. Future studies should focus on the effects of these possible confounders on metabolic parameters in women with POI.

Besides gynecological symptoms of estrogen deficiency, POI is also associated with CVD risk. Obesity is a major risk factor for cardiometabolic abnormalities. The mechanism between obesity and cardiovascular health might be explained by processes including chronic inflammation, insulin resistance, endothelial dysfunction, coronary calcification and so on [48]. The results of our study suggested that metabolic parameters including WC, FG, TC, LDL and TG were altered in women with POI independent of overweight and obesity, which are all risk factors for CVD [49–54]. Although exogenous hormone therapies including contraception pill and hormone replacement therapy are usually associated with cardiovascular events [55], they have potential benefit on metabolic parameters for women with POI [56].

In naturally postmenopausal women, hormone replacement therapy has been hypothesized to have long-term benefits on cardiovascular health [57]. Hormone replacement therapy might improve endothelial dysfunction [24], and reduce blood pressure, plasma angiotensin, and serum creatinine in women with POI [58]. However, in young women with POI undergoing hormone replacement therapy, no long-term data are available to substantiate cardiovascular outcomes. In the current review, we show that even young and lean women with POI were associated with an altered metabolic profile. The

screening and prevention of metabolic abnormalities may provide health benefits for women with POI. However, more prospective research is needed to assess if interventions to treat hyperglycemia, dyslipidemia, insulin resistance can bring long-term benefits on cardiovascular for women with POI.

The infertility of POI patients is mainly caused by the reduced quantity and quality of oocytes. Additionally, the chance for spontaneous pregnancy is estimated in 4–10% of women with POI [59]. Currently, there is no treatment for infertility in women with POI. Previous studies have suggested that metabolic abnormalities are associated with female reproductive health and that altered lipids may impair endometrial receptivity [60]. Furthermore, dyslipidemia and metabolic syndrome were associated with a lower live birth rate in infertile women undergoing assisted reproduction [61, 62]. These lines of evidence suggest that interventions designed for metabolic parameters might bring reproductive benefits for women with POI who seek infertility treatment.

Our study has several limitations. The sample size on some indices was relatively small. Most studies were case–control studies and we are unable to fully access the causality between metabolic parameters and POI. Additionally, the quality of included studies were not very high. Lastly, some covariates that may affect a person's metabolic profile, such as smoking, hormone therapy, lifestyle, were not evaluated in most studies.

Conclusion

In conclusion, women with POI exhibited increased waist circumference, higher serum lipids, and increased glucose levels. Our study provides improved insight into the understanding of the pathophysiology in women with POI. Future studies are warranted to further explore the underlying mechanism between metabolic abnormalities and POI.

Abbreviations

POI: Premature ovarian insufficiency; CVD: Cardiovascular disease; PRISMA: Preferred Reporting Items for Systematic Reviews and Meta-analyses; WC: Waist circumference; SBP: Systolic blood pressure; DBP: Diastolic blood pressure; FG: Fasting glucose; INS: Insulin; TC: Total cholesterol; HDL: High-density lipoprotein; LDL: Low-density lipoprotein; TG: Triglycerides; BMI: Body mass index; FSH: Follicle-stimulating hormone; E2: Estradiol; NOS: Newcastle–Ottawa scale; MD: Mean difference; CI: Confidence interval.

Supplementary Information

The online version contains supplementary material available at <https://doi.org/10.1186/s13048-022-01041-w>.

Additional file 1: Supplementary Figure 1. Funnel plot in the meta-analysis on the association of waist circumference between premature ovarian insufficiency and control group. **Supplementary Figure 2.** Funnel plot in the meta-analysis on the association of systolic blood pressure

between premature ovarian insufficiency and control group. **Supplementary Figure 3.** Funnel plot in the meta-analysis on the association of diastolic blood pressure between premature ovarian insufficiency and control group. **Supplementary Figure 4.** Funnel plot in the meta-analysis on the association of fasting glucose between premature ovarian insufficiency and control group. **Supplementary Figure 5.** Funnel plot in the meta-analysis on the association of insulin between premature ovarian insufficiency and control group. **Supplementary Figure 6.** Funnel plot in the meta-analysis on the association of total cholesterol between premature ovarian insufficiency and control group. **Supplementary Figure 7.** Funnel plot in the meta-analysis on the association of high-density lipoprotein between premature ovarian insufficiency and control group. **Supplementary Figure 8.** Funnel plot in the meta-analysis on the association of low-density lipoprotein between premature ovarian insufficiency and control group. **Supplementary Figure 9.** Funnel plot in the meta-analysis on the association of triglycerides between premature ovarian insufficiency and control group.

Additional file 2: Supplementary table 1. PRISMA 2022 checklist.

Additional file 3: Supplementary table 2. Search strategy.

Additional file 4: Supplementary table 3. Meta-regression results.

Authors' contributions

JX designed the study and critically revised the manuscript. WYC and XL performed data analysis. WYC, XL, JS, NNX, CD, WW and XKW collected data. WYC and XL drafted the manuscript. All authors reviewed the manuscript. The author(s) read and approved the final manuscript.

Funding

None.

Availability of data and materials

The datasets used and/or analysed during the current study are available from the corresponding author on reasonable request.

Declarations

Ethics approval and consent to participate

Not applicable.

Consent for publication

Not applicable.

Competing interests

The authors declare no conflict of interest.

Author details

¹Fourth Affiliated Hospital, Zhejiang University School of Medicine, No. 1 Shang Cheng Avenue, Yiwu 322000, Zhejiang, China. ²Department of Obstetrics and Gynecology, The Second Affiliated Hospital of Zhejiang Chinese Medical University, Hangzhou, China. ³Center of Reproductive Medicine, The First Affiliated Hospital of Zhengzhou University, Zhengzhou, China. ⁴Women's Hospital, Zhejiang University School of Medicine, Hangzhou, China. ⁵Department of Obstetrics and Gynecology, First Affiliated Hospital, Heilongjiang University of Chinese Medicine, Harbin, China. ⁶Heilongjiang Province Hospital, Harbin, China.

Received: 28 October 2021 Accepted: 17 September 2022

Published online: 30 September 2022

References

- Jiao X, Ke H, Qin Y, Chen Z-J. Molecular genetics of premature ovarian insufficiency. *Trends Endocrinol Metab.* 2018;29:795–807.
- Rebar RW. Premature ovarian failure. *Obstet Gynecol.* 2009;113:1355–63.
- Webber L, Davies M, Anderson R, Bartlett J, Braat D, Cartwright B, Cifkova R, de Muinck K-S, Hogervorst E, Janse F, et al. ESHRE Guideline:

- management of women with premature ovarian insufficiency. *Human reproduction* (Oxford, England). 2016;31:926–37.
4. Sharif K, Watad A, Bridgewood C, Kanduc D, Amital H, Shoenfeld Y. Insights into the autoimmune aspect of premature ovarian insufficiency. *Best Pract Res Clin Endocrinol Metab*. 2019;33: 101323.
 5. Schover LR. Premature ovarian failure and its consequences: vasomotor symptoms, sexuality, and fertility. *J Clin Oncol*. 2008;26:753–8.
 6. Podfigurna-Stopa A, Czyzyk A, Grymowicz M, Smolarczyk R, Katulski K, Czajkowski K, Meczekalski B. Premature ovarian insufficiency: the context of long-term effects. *J Endocrinol Invest*. 2016;39:983–90.
 7. Groff AA, Covington SN, Halverson LR, Fitzgerald OR, Vanderhoof V, Calis K, Nelson LM. Assessing the emotional needs of women with spontaneous premature ovarian failure. *Fertil Steril*. 2005;83:1734–41.
 8. Li XT, Li PY, Liu Y, Yang HS, He LY, Fang YG, Liu J, Liu BY, Chaplin JE. Health-related quality-of-life among patients with premature ovarian insufficiency: a systematic review and meta-analysis. *Qual Life Res*. 2020;29:19–36.
 9. Honigberg MC, Zekavat SM, Aragam K, Finneran P, Klarin D, Bhatt DL, Januzzi JL, Scott NS, Natarajan P. Association of premature natural and surgical menopause with incident cardiovascular disease. *JAMA*. 2019;322:2411–21.
 10. Roeters van Lennep JE, Heida KY, Bots ML, Hoek A. Cardiovascular disease risk in women with premature ovarian insufficiency: a systematic review and meta-analysis. *Eur J Prev Cardiol*. 2016;23:178–86.
 11. Page MJ, Moher D, Bossuyt PM, Boutron I, Hoffmann TC, Mulrow CD, Shamseer L, Tetzlaff JM, Akl EA, Brennan SE, et al. PRISMA 2020 explanation and elaboration: updated guidance and exemplars for reporting systematic reviews. *BMJ* (Clinical research ed). 2021;372: n160.
 12. Wan X, Wang W, Liu J, Tong T. Estimating the sample mean and standard deviation from the sample size, median, range and/or interquartile range. *BMC Med Res Methodol*. 2014;14:135.
 13. The Newcastle-Ottawa scale (NOS) for assessing the quality if nonrandomized studies in meta-analyses [http://www.ohri.ca/programs/clinical_epidemiology/oxford.asp]
 14. AbdulAzeez IM, Biliaminu SA, Okesina AB, Olatinwo AWO, Omokanye LO. Lipid profile in subfertile clients with premature ovarian failure: University of Ilorin teaching hospital experience. *J Krishna Inst Med Scie Uni*. 2018;7:62–7.
 15. Ağaçaayak E, Görük NY, Küsen H, Tunç SY, Başaranoğlu S, İçen MS, Yıldızbakan A, Yüksel H, Kalkanlı S, Gül T. Role of inflammation and oxidative stress in the etiology of primary ovarian insufficiency. *Turk J Obstet Gynecol*. 2016;13:109–15.
 16. Ates S, Yesil G, Sevkett O, Molla T, Yildiz S. Comparison of metabolic profile and abdominal fat distribution between karyotypically normal women with premature ovarian insufficiency and age matched controls. *Maturitas*. 2014;79:306–10.
 17. Bozkaya V, Yumusak OH, Ozaksit G, Tenekecioğlu E, Gül İbrişim E, Alkan M, Oskovi-Kaplan ZA, Erel Ö. The role of oxidative stress on subclinical atherosclerosis in premature ovarian insufficiency and relationship with carotid intima-media thickness. *Gynecol Endocrinol*. 2020;36:687–92.
 18. Cekici Y, Kilic S, Ovayolu A, Saracoglu E, Duzen İV, Yilmaz M, Kaya BC, Bozkurt D. Prediction of lipoprotein-associated phospholipase a2 and inflammatory markers in subclinical atherosclerosis in premature ovarian failure patients. *Acta Cardiologica Sinica*. 2021;37:30–7.
 19. Czyzyk A, Filipowicz D, Podfigurna A, Ptas P, Piestrzynska M, Smolarczyk R, Genazzani AR, Meczekalski B. Brain-derived neurotrophic factor (BDNF) plasma concentration in patients diagnosed with premature ovarian insufficiency (POI). *Gynecol Endocrinol*. 2017;33:413–7.
 20. Daan N, Muka T, Koster M, Van Lennep JR, Lambalk C, Laven J, Fauser C, Meun C, De Rijke Y, Boersma E, et al. Cardiovascular risk in women with premature ovarian insufficiency compared to premenopausal women at middle age. *Maturitas*. 2017;100:109.
 21. Goldmeier S, De Angelis K, Casali KR, Vilodre C, Consolim-Colombo F, Klein AB, Plentz R, Spritzer P, Irigoyen MC. Cardiovascular autonomic dysfunction in primary ovarian insufficiency: clinical and experimental evidence. *Am J Transl Res*. 2014;6:91–101.
 22. Gulhan I, Bozkaya G, Uyar I, Oztekin D, Pamuk BO, Dogan E. Serum lipid levels in women with premature ovarian failure. *Menopause*. 2012;19:1231–4.
 23. Huang Y, Lv Y, Qi T, Luo Z, Meng X, Ying Q, Li D, Li C, Lan Y, Chu K, et al. Metabolic profile of women with premature ovarian insufficiency compared with that of age-matched healthy controls. *Maturitas*. 2021;148:33–9.
 24. Kalantaridou SN, Naka KK, Papanikolaou E, Kazakos N, Kravariti M, Calis KA, Paraskevaidis EA, Sideris DA, Tsatsoulis A, Chrousos GP, Michalis LK. Impaired endothelial function in young women with premature ovarian failure: normalization with hormone therapy. *J Clin Endocrinol Metab*. 2004;89:3907–13.
 25. Knauff EA, Westerveld HE, Goverde AJ, Eijkemans MJ, Valkenburg O, van Santbrink EJ, Fauser BC, van der Schouw YT. Lipid profile of women with premature ovarian failure. *Menopause*. 2008;15:919–23.
 26. Kulaksizoglu M, Ipekci SH, Kebapcilar L, Kebapcilar AG, Korkmaz H, Akyurek F, Baldane S, Gonen MS. Risk factors for diabetes mellitus in women with primary ovarian insufficiency. *Biol Trace Elem Res*. 2013;154:313–20.
 27. Kunicki M, Rudnicka E, Skórska J, Calik-Ksepka AI, Smolarczyk R. Insulin resistance indexes in women with premature ovarian insufficiency - a pilot study. *Ginekol Pol*. 2018;89:364–9.
 28. Luo X, Cheng R, Zhang J, Ma Y, Zhang J, Luo Y, Xu L. Evaluation of body composition in POF and its association with bone mineral density and sex steroid levels. *Gynecol Endocrinol*. 2018;34:1027–30.
 29. Podfigurna A, Stellmach A, Szeliga A, Czyzyk A, Meczekalski B. Metabolic profile of patients with premature ovarian insufficiency. *J Clin Med*. 2018;7:374.
 30. Podfigurna A, Maciejewska-Jeske M, Nadolna M, Mikolajska-Ptas P, Szeliga A, Biliński P, Napierala P, Meczekalski B. Impact of hormonal replacement therapy on bone mineral density in premature ovarian insufficiency patients. *J Clin Med*. 2020;9:1–10.
 31. Szlendak-Sauer K, Jakubik D, Kunicki M, Skórska J, Smolarczyk R. Autoimmune polyglandular syndrome type 3 (APS-3) among patients with premature ovarian insufficiency (POI). *Eur J Obstet Gynecol Reprod Biol*. 2016;203:61–5.
 32. Tunc SY, Goruk NY, Agacayak E, Icen MS, Findik FM, Kusen H, Evsen MS, Yuksel H, Gul T. Significance of growth differentiation factor 15 in primary ovarian insufficiency: inflammatory, biochemical, and hormonal correlates. *Clin Exp Obstet Gynecol*. 2017;44:730–3.
 33. Xu Z, Wang Q, Zhu L, Ma L, Ye X, Li C, Lan Y, Huang Y, Liu J, Zhou J. Correlation of serum vitamin D levels with ovarian reserve markers in patients with primary ovarian insufficiency. *Int J Clin Exp Med*. 2019;12:4147.
 34. Yorgun H, Gürses KM, Canpolat U, Yapıcı Z, Bozdağ G, Kaya EB, Aytemir K, Oto A, Kabakçıl G, Tokgözoğlu L. Evaluation of cardiac autonomic function by various indices in patients with primary premature ovarian failure. *Clin Res Cardiol*. 2012;101:753–9.
 35. Ambikairajah A, Walsh E, Cherbuin N. Lipid profile differences during menopause: a review with meta-analysis. *Menopause* (New York, NY). 2019;26:1327–33.
 36. De Paoli M, Zakharia A, Werstuck GH. The role of estrogen in insulin resistance: a review of clinical and preclinical data. *Am J Pathol*. 2021;191:1490–8.
 37. Mauvais-Jarvis F, Clegg DJ, Hevener AL. The role of estrogens in control of energy balance and glucose homeostasis. *Endocr Rev*. 2013;34:309–38.
 38. Christ JP, Gunning MN, Palla G, Eijkemans MJC, Lambalk CB, Laven JSE, Fauser BCJM. Estrogen deprivation and cardiovascular disease risk in primary ovarian insufficiency. *Fertil Steril*. 2018;109:594.
 39. Lei Z, Wu H, Yang Y, Hu Q, Lei Y, Liu W, Nie Y, Yang L, Zhang X, Yang C, et al. Ovariectomy impaired hepatic glucose and lipid homeostasis and altered the gut microbiota in mice with different diets. *Front Endocrinol*. 2021;12: 708838.
 40. Taneja C, Gera S, Kim S-M, Iqbal J, Yuen T, Zaidi M. FSH-metabolic circuitry and menopause. *J Mol Endocrinol*. 2019;63:R73–80.
 41. Sun D, Bai M, Jiang Y, Hu M, Wu S, Zheng W, Zhang Z. Roles of follicle stimulating hormone and its receptor in human metabolic diseases and cancer. *Am J Transl Res*. 2020;12:3116–32.
 42. Azhar S, Tsai L, Medicherla S, Chandrasekher Y, Giudice L, Reaven E. Human granulosa cells use high density lipoprotein cholesterol for steroidogenesis. *J Clin Endocrinol Metab*. 1998;83:983–91.
 43. Feng L, Nian S, Tong Z, Zhu Y, Li Y, Zhang C, Bai X, Luo X, Wu M, Yan Z. Age-related trends in lipid levels: a large-scale cross-sectional study of the general Chinese population. *BMJ Open*. 2020;10: e034226.
 44. Shamaï L, Lurix E, Shen M, Novaro GM, Szomstein S, Rosenthal R, Hernandez AV, Asher CR. Association of body mass index and lipid profiles: evaluation of a broad spectrum of body mass index patients including the morbidly obese. *Obes Surg*. 2011;21:42–7.

45. Calcaterra V, Winickoff JP, Klersy C, Schiano LM, Bazzano R, Montalbano C, Musella V, Regalbutto C, Larizza D, Cena H. Smoke exposure and cardiometabolic profile in youth with type 1 diabetes. *Diabetol Metab Syndr*. 2018;10:53.
46. Sitruk-Ware R, Nath A. Metabolic effects of contraceptive steroids. *Rev Endocr Metab Disord*. 2011;12:63–75.
47. Guevara-Cruz M, Flores-López AG, Aguilar-López M, Sánchez-Tapia M, Medina-Vera I, Díaz D, Tovar AR, Torres N. Improvement of lipoprotein profile and metabolic Endotoxemia by a lifestyle intervention that modifies the gut microbiota in subjects with metabolic syndrome. *J Am Heart Assoc*. 2019;8: e012401.
48. Cercato C, Fonseca FA. Cardiovascular risk and obesity. *Diabetol Metab Syndr*. 2019;11:74.
49. Peters SAE, Singhateh Y, Mackay D, Huxley RR, Woodward M. Total cholesterol as a risk factor for coronary heart disease and stroke in women compared with men: a systematic review and meta-analysis. *Atherosclerosis*. 2016;248:123–31.
50. Domanski MJ, Tian X, Wu CO, Reis JP, Dey AK, Gu Y, Zhao L, Bae S, Liu K, Hasan AA, et al. Time course of LDL cholesterol exposure and cardiovascular disease event Risk. *J Am Coll Cardiol*. 2020;76:1507–16.
51. Sarwar N, Danesh J, Eiriksdottir G, Sigurdsson G, Wareham N, Bingham S, Boekholdt SM, Khaw K-T, Gudnason V. Triglycerides and the risk of coronary heart disease: 10,158 incident cases among 262,525 participants in 29 Western prospective studies. *Circulation*. 2007;115:450–8.
52. Navab M, Reddy ST, Van Lenten BJ, Fogelman AM. HDL and cardiovascular disease: atherogenic and atheroprotective mechanisms. *Nat Rev Cardiol*. 2011;8:222–32.
53. Bragg F, Li L, Bennett D, Guo Y, Lewington S, Bian Z, Yang L, Chen J, Chen Y, Collins R, et al. Association of random plasma glucose levels with the risk for cardiovascular disease among Chinese adults without known diabetes. *JAMA cardiology*. 2016;1:813–23.
54. Chirinos DA, Llabre MM, Goldberg R, Gellman M, Mendez A, Cai J, Sotres-Alvarez D, Daviglius M, Gallo LC, Schneiderman N. Defining abdominal obesity as a risk factor for coronary heart disease in the U.S.: results from the Hispanic community health study/study of Latinos (HCHS/SOL). *Diabetes care*. 2020;43:1774–80.
55. Skeith L, Le Gal G, Rodger MA. Oral contraceptives and hormone replacement therapy: How strong a risk factor for venous thromboembolism? *Thromb Res*. 2021;202:134–8.
56. Stevenson JC, Collins P, Hamoda H, Lambrinoudaki I, Maas AHEM, Maclaran K, Panay N. Cardiometabolic health in premature ovarian insufficiency. *Climacteric*. 2021;24:474–80.
57. Prentice RL, Aragaki AK, Chlebowski RT, Rossouw JE, Anderson GL, Stefanick ML, Wactawski-Wende J, Kuller LH, Wallace R, Johnson KC, et al. Randomized trial evaluation of the benefits and risks of menopausal hormone therapy among women 50–59 years of age. *Am J Epidemiol*. 2021;190:365–75.
58. Langrish JP, Mills NL, Bath LE, Warner P, Webb DJ, Kelnar CJ, Critchley HOD, Newby DE, Wallace WHB. Cardiovascular effects of physiological and standard sex steroid replacement regimens in premature ovarian failure. *Hypertension (Dallas, Tex : 1979)*. 2009;53:805–11.
59. Bidet M, Bachelot A, Bissauge E, Golmard JL, Gricourt S, Dulon J, Coussieu C, Badachi Y, Touraine P. Resumption of ovarian function and pregnancies in 358 patients with premature ovarian failure. *J Clin Endocrinol Metab*. 2011;96:3864–72.
60. Li J, Gao Y, Guan L, Zhang H, Chen P, Gong X, Li D, Liang X, Huang M, Bi H. Lipid profiling of peri-implantation endometrium in patients with premature progesterone rise in the late follicular phase. *J Clin Endocrinol Metab*. 2019;104:5555–65.
61. Cai W-Y, Luo X, Chen E, Lv H, Fu K, Wu X-K, Xu J. Serum lipid levels and treatment outcomes in women undergoing assisted reproduction: a retrospective cohort study. *Front Endocrinol*. 2021;12: 633766.
62. He Y, Lu Y, Zhu Q, Wang Y, Lindheim SR, Qi J, Li X, Ding Y, Shi Y, Wei D, et al. *Am J Obstet Gynecol*. 2019;221:138.e1.

Publisher's Note

Springer Nature remains neutral with regard to jurisdictional claims in published maps and institutional affiliations.

Ready to submit your research? Choose BMC and benefit from:

- fast, convenient online submission
- thorough peer review by experienced researchers in your field
- rapid publication on acceptance
- support for research data, including large and complex data types
- gold Open Access which fosters wider collaboration and increased citations
- maximum visibility for your research: over 100M website views per year

At BMC, research is always in progress.

Learn more biomedcentral.com/submissions

