

REVIEW

Open Access



Collagens and Cancer associated fibroblasts in the reactive stroma and its relation to Cancer biology

Neel I. Nissen^{1,2*} , Morten Karsdal¹ and Nicholas Willumsen¹

Abstract

The extracellular matrix (ECM) plays an important role in cancer progression. It can be divided into the basement membrane (BM) that supports epithelial/endothelial cell behavior and the interstitial matrix (IM) that supports the underlying stromal compartment. The major components of the ECM are the collagens. While breaching of the BM and turnover of e.g. type IV collagen, is a well described part of tumorigenesis, less is known regarding the impact on tumorigenesis from the collagens residing in the stroma. Here we give an introduction and overview to the link between tumorigenesis and stromal collagens, with focus on the fibrillar collagens type I, II, III, V, XI, XXIV and XXVII as well as type VI collagen. Moreover, we discuss the impact of the cells responsible for this altered stromal collagen remodeling, the cancer associated fibroblasts (CAFs), and how these cells are key players in orchestrating the tumor microenvironment composition and tissue microarchitecture, hence also driving tumorigenesis and affecting response to treatment. Lastly, we discuss how specific collagen-derived biomarkers reflecting the turnover of stromal collagens and CAF activity may be used as tools to non-invasively interrogate stromal reactivity in the tumor microenvironment and predict response to treatment.

Keywords: Oncology, Extracellular matrix (ECM), Collagens, Cancer-associated fibroblasts (CAFs), Desmoplasia, Biomarkers, Liquid biopsy

Introduction

The ECM is an extensive part of the microenvironment in all tissues. It consists of a non-cellular meshwork of proteins, glycoproteins, proteoglycans and polysaccharides. When structured in an orderly manner, the ECM provides a physical scaffold for its surrounding cells, bind growth factors and regulate cell behavior.

The ECM can be divided into two matrices: the basement membrane (BM) and the interstitial matrix (IM). Under healthy conditions, the BM is a well-structured membrane underlining epithelial and endothelial cells and separating them from the IM. When fully assembled the BM provides structural support to underlining cells and regulate cell behavior. The IM makes up the main

stroma and plays a major role in cell migration, cell adhesion, angiogenesis, tissue development and repair [1].

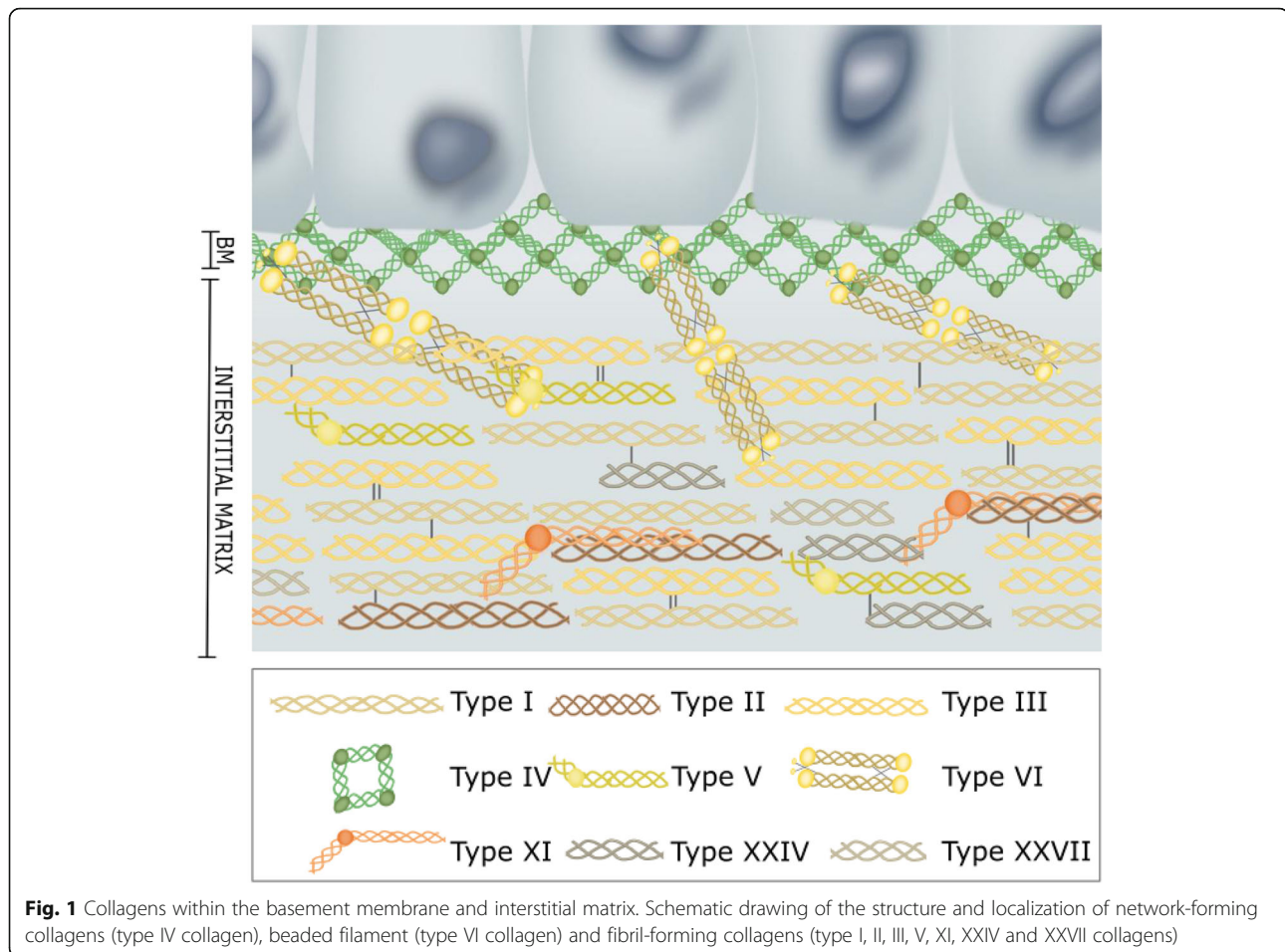
The major proteins in the ECM are collagens, which constitutes up to 30% of the total protein mass in the human body [2]. The collagens are organized in a relaxed meshwork surrounded by proteins such as elastin and glycoproteins causing a resilience to extensive tensile strength [2]. Of today, 28 different collagens have been identified creating a unique ECM composition in different tissues. The 28 collagens can be divided into several distinct subgroups, where the so-called fibrillar-forming collagens and the network-forming collagens have been most extensively characterized [3]. The major components of the BM are the network-forming collagens such as type IV and type VIII collagen whereas the IM is dominated by the fibrillar-forming collagens type I, II, III, V, XI, XXIV, XXVII and the beaded filament type VI collagen synthesized by the fibroblasts receding in the stroma [4–8]. These collagens are not just collagens but individual structures creating a complex

* Correspondence: nin@nordicbio.com

¹Biomarkers and Research, Nordic Bioscience A/S, Herlev Hovedgade 205-207, 2730 Herlev, Denmark

²Biotech Research & Innovation Centre (BRIC), University of Copenhagen, Ole Maaløes vej 5, 2200 Copenhagen N, Denmark





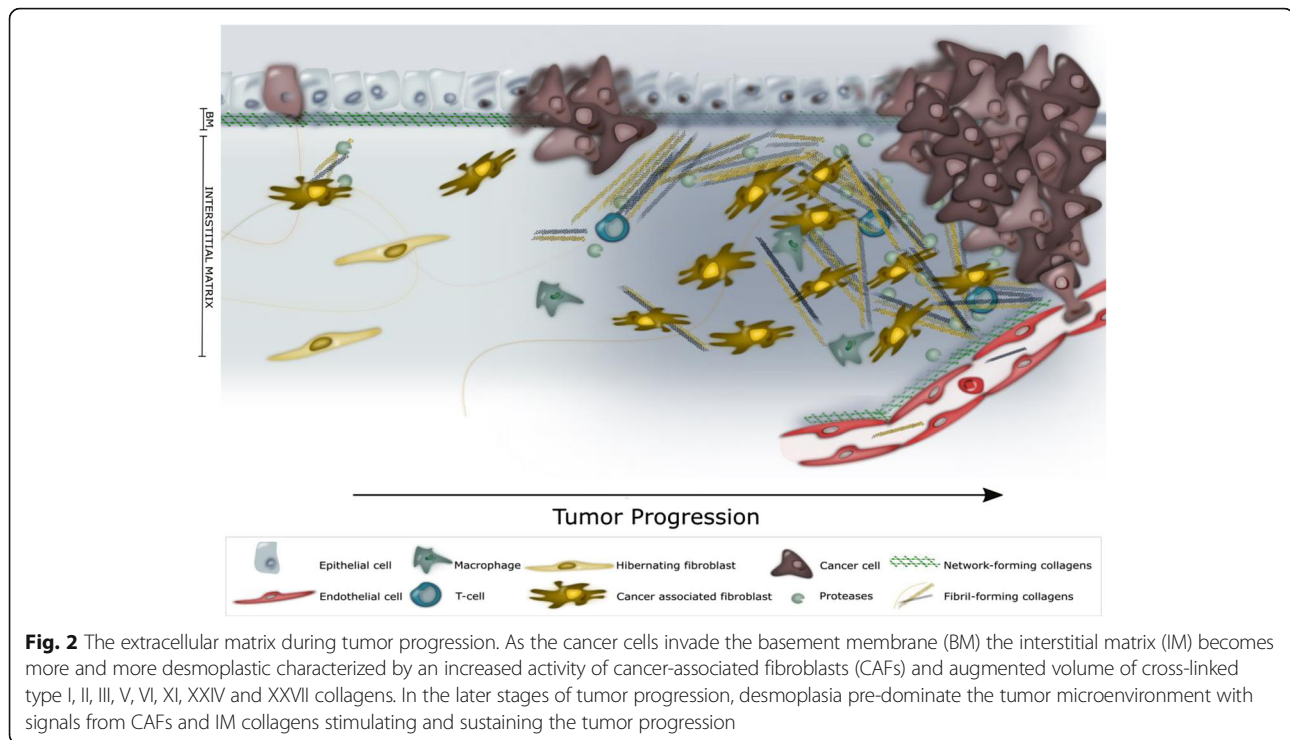
network that interact with each other and the surroundings (Fig. 1).

In the healthy tissue there is an ongoing ECM remodeling to maintain tissue integrity and function, e.g. new collagens synthesized that replaces older proteins that are degraded. The collagen production and assembly in healthy tissue is highly regulated by a perfect counterbalance of metalloproteinases (MMPs) and inhibitors of MMPs as well as a controlled activity of other enzymes such as lysyl oxidases (LOX) [9, 10].

During cancer, the ECM-dynamics are skewed. It is well established that cancer cells secrete high amounts of MMPs, which in turn remodel and degrade the BM. The remodeling of the BM leads to a complex chaos of pro- and antitumor signals from degradation products. The role of type IV collagen turnover, within the BM, has been extensively studied in relation to tumor biology. Several studies have shown that proteolytic cleavage of collagen IV can expose so-called cryptic domains, which are normally hidden when collagen IV is fully assembled [11–14]. Similar things have been seen with other BM collagens e.g. type XVIII collagen [15]. Depending on the context, these cryptic sites have both

pro- and anti-tumor effects; still the turnover and degradation of BM collagens are intrinsically associated with the invasive phenotype of malignant cells [11].

Tumor cell invasion through the BM expose malignant cells to the IM and the fibroblast derived collagens; type I, II, III, V, VI, XI, XXIV and XXVII collagens. Type I, II, III, V, XI, XXIV and XXVII collagens are all fibrillary collagens embedded in the IM, whereas type VI collagen is found in the interface between the BM and the IM. Emerging evidence indicate a high impact of fibroblast-derived collagens and so-called cancer associated fibroblasts (CAFs) in tumorigenesis [16, 17]. During tumor progression, CAFs are the major players in the dysregulated collagen turnover leading to tumor fibrosis (desmoplasia) characterized by excessive collagen depositions in the surroundings of the tumor [18, 19]. The collagens are often crosslinked and linearized leading to increased stiffening of the tissue (Fig. 2). This elicits behavioral effects on surrounding tumor cells, and regulate cell proliferation, differentiation, gene expression, migration, invasion, metastasis and survival and hereby the collagens are directly affecting the hallmarks of cancer [20]. In support, tumor tissue, containing a large amount of these fibroblast



derived stromal collagens is directly correlated with poorer outcome for the patient [21–25].

Here we give an introduction and overview to the link between tumorigenesis, fibroblasts derived collagens and CAFs.

CANCER ASSOCIATED FIBROBLASTS – Key players in cancer progression and desmoplasia

New insight into the role of CAFs have shown that these cells play a key-role in cancer progression. In the tumor microenvironment, transforming growth factor beta (TGF- β), platelet-derived growth factor and fibroblast growth factor-2, among others, secreted from malignant cells, attracts fibroblasts from neighboring tissue as well as aid in the transformation of normal fibroblast to CAFs within the tumor tissue [26–30]. Up to 80% of the normal fibroblasts in breast tissue acquire the CAF phenotype during cancer progression [17]. Interestingly, CAFs can also originate from epithelial cells [31], immune cells and endothelial cells [32] emphasizing the complexity of this cell type. The CAF phenotype is characterized by changes in morphology and increased expression of myofibroblast markers such as alpha-smooth muscle actin (α -SMA), Vimentin, type XI collagen, fibronectin, fibroblast specific protein 1 (FSP-1) and fibroblast activating protein (FAP) [33]. Furthermore, CAFs show increased production of IM collagens [34, 35]. It is an ongoing discussion whether distinctive features

between CAFs and myofibroblasts exist. The literature focusing on this topic is scarce and it seems that there is no consensus on what define quiescent fibroblasts, myofibroblasts and CAFs. Myofibroblasts (hepatic myofibroblasts) and CAFs (fibroblasts isolated from liver cancer patients) expressing α -SMA and Tenascin-C show similar apoptosis signaling compared to fibroblasts not expressing α -SMA and Tenascin-C (defined by the authors as quiescent fibroblasts) [29]. However, in another study performed by Öhlund and colleagues, it was shown that the transcriptional profiles between myofibroblasts (pancreatic stellate cells grown in monolayer) and CAFs (pancreatic stellate cells cocultured with tumor organoids) differs [36]. Thus, the difficulties in defining what a CAF is and compare these cells/cell states [37] to other cells is still an ongoing battle. To further complicate things, many studies have shown that different CAF subtypes exist based on differences in protein expression, paracrine signaling, tumorigenicity, invasion profile, ECM modifying capacities etc. [16, 19, 27, 33, 35, 36, 38–40].

Several studies indicate that CAFs modulate epithelial transformation and promote cancer progression. As one example, CAFs have shown to initiate malignant transformation in non-malignant cells through overexpression of estrogen, TGF- β and hepatocyte growth factor [41, 42]. As another example, a more mesenchymal phenotype has been observed for non-malignant prostate cells, when co-cultured with CAFs [43]. In addition

to these in vitro examples, the initiation of cancer, by CAFs, have also been shown in vivo, where the injection of non-tumorigenic prostate cells, co-cultured with CAFs, lead to the formation of large tumors. On the contrary, no formation was evident when cells were cultured with normal fibroblasts [41]. Other than initiating cancer, CAFs have also been shown to sustain cancer progression and induce angiogenesis. Breast tumor tissue, isolated from mice, containing abundant amounts of CAFs shows increased vascularity compared to tissue with normal fibroblast [44]. Glentis and colleagues, suggest that CAFs play a role in the invasion of cancer cells through the BM by pulling and stretching the BM resulting in small wholes which the cancer cells can squeeze through [39]. They also showed that especially invasive tumors from colon cancer patients are surrounded by a thick capsule of CAFs, which further suggests CAF involvement in invasion [39]. In line with this, CAFs also play a role in metastasis. Lung cancer cells treated with media from CAFs have increased migration potential compared to cells treated with media from normal fibroblasts [45]. This is further supported, by a study showing that cervical cancer cells co-transplanted with CAFs into mice leads to lymph node metastasis. In contrast, injections without CAFs do not lead to lymph node metastasis [46]. The association between CAFs and lymph node metastasis has also been shown in esophageal squamous cell carcinoma in humans [47]. Several studies have also shown that CAFs play a role in inflammation by modulation of inflammatory components which promote tumor growth and metastasis [36, 48–50] (reviewed by [51]). Thus, these examples show the important role CAFs play in initiating and sustaining epithelial transformation and cancer progression across many different solid tumor types.

Aside from directly affecting cancer cells, CAFs are also major contributors to desmoplasia and remodeling of the ECM. Recent evidence indicates that CAFs modulate the desmoplastic reaction by affecting a wide variety of ECM proteins during tumorigenesis. A study has shown that CAFs take part in the assembly of fibronectin, which is highly abundant in the ECM and strongly involved in metastasis [52]. CAFs also express high amounts of the major ECM component hyaluronic acid, which has shown to encompass many structural and biological functions in tumor progression [53]. The oncogenes YAP/TAZ are suggested as being part of the remodeling processes exerted by CAFs. When the ECM becomes stiff, YAP/TAZ gets transcriptionally active and promote CAF function which further stiffens the ECM (reviewed in [54]) [55]. The regulation of YAP/TAZ, resulting in CAF activity, is further regulated by the so called Rho family of small GTPases, which plays a role in CAF functioning and myofibroblast signaling [54, 56, 57].

Some of the major steps in desmoplasia are cross-linking of collagens, fiber elongation and fiber realignment, which are associated with poor survival in cancer patients [35, 58]. CAFs secrete increased amounts of MMPs and LOX-proteins, which catalyze these steps [19, 35]. CAF secreted MMPs also play a key role in neovascularization because of the release of VEGF from degraded matrix [11, 39, 59]. ECM proteins secreted and modulated by CAFs further recruit other cell types such as immune cells, which promote tumor progression [26, 27]. Finally, a key step in desmoplasia, is the increased expression of fibroblast-derived collagens within the stroma. The accumulation of collagens, accompanied by increased cross-linking and stiffening of the tissue increase interstitial fluid pressure [60]. This effect has been shown to reduce drug delivery of chemotherapy and immunotherapy [60]. The stiffened tissue also play a role in tumor cell invasion, as the cross-linked collagens can create paths for the tumor cells to travel on [61].

Although consensus is that desmoplasia is a pro-tumorigenic event, results have emerged from mouse studies that have raised debate in the field. In one study, it has been shown that when the stromal content was reduced by deleting the sonic hedgehog protein in a pancreas cancer mouse model, the mice had more aggressive tumors as compared to control mice [62]. This was supported by similar findings, showing that the depletion of CAFs in mice led to much more aggressive tumors [63]. These findings do not exclude that desmoplasia is pro-tumorigenic, but suggest that a homeostatic restoration of the desmoplastic stroma, rather than its ablation, may be the best approach for eliminating tumor progression, as also suggested by Froeling and Kocher [64]. To further complicate matters, it has been suggested that some CAF subsets promote cancer, while others inhibit cancer [16, 65]. Albeit CAF biology and desmoplasia is complex, tumor tissue containing high amounts of CAFs have been reported to correlate with poor patient outcome in many different cancer types including colorectal, breast, tongue and esophageal cancer [66–70].

Fibroblast derived stromal collagens and their contribution to tumorigenesis

While extensive research is currently going in the direction of CAF phenotype and their prognostic aspects, less is known regarding the collagens they produce. Are there functional differences in the collagen profile of tumors and does 'good' and 'bad' collagens exist in the tumor microenvironment as has been described for fibrosis [71], i.e. are collagen components originating from CAFs affecting tumor progression?

Collagens, and especially fibroblast-derived collagens (fibrillar collagens and the beaded filament type VI collagen), are extremely important in cancer. Most of these

collagens are upregulated in cancer on both gene and protein level. They all modulate crucial steps in tumorigenesis such as proliferation, apoptosis, angiogenesis, invasion and metastasis. For many of the fibroblast-derived collagens specific chains of the collagens and pro-collagens have shown to be the effectors. Some studies even suggest that few of these collagens can inhibit tumorigenesis, and that different levels of collagens have different effects [72–74]. This do suggest, that the turnover of fibroblast-collagens is important and relevant in the cancer setting and should be considered when exploring these collagens. Here we give an overview of these collagens and their contribution to tumorigenesis (Table 1).

Type I collagen

Type I collagen is the most abundant collagen throughout the body. It is the major component of the bone and is present in blood vessels, cornea, sclera, tendon, ligaments and skin. It is the most common collagen in the IM, where it has key structural roles. Apart from its structural role, type I collagen possess important growth factor binding potential, and via its binding to a variety of proteins regulate cell homeostasis [75].

A number of studies have shown that type I collagen play a significant role in bone related diseases, inclusive bone cancer and cancer-related bone metastasizes. Especially the turnover of type I collagen has shown to be important [76–79].

Type I collagen is also dysregulated in other solid tumor types (than bone cancer) and can affect tumor cell behavior. Compared to healthy tissue, the amount of type I collagen is augmented in pancreas, colorectal, ovarian, breast and lung cancer [21, 23, 24, 80].

Pancreas cancer cells exposed to type I collagen show increased proliferation, are less responsive to apoptosis, secrete higher amounts of TGF- β and show a strong reduction in E-cadherin expression [81–83]. Interestingly, Gao et al. found that tumor cells, in mouse breast tumor tissue, show high proliferative activity when located adjacent to type I collagen, whereas cells not in contact with type I collagen are quiescent [84].

Type I collagen has also been shown to affect metastasis, as exposure to type I collagen results in more invasive behavior in tumor cells [82]. In an in vivo breast cancer model, with accumulated type I collagen distribution, the amount of circulating tumor cells was increased compared to the amount in wild type mice. Moreover, the metastatic lesions were larger than in wild type [85].

Type II collagen

Type II collagen is the main collagen in cartilage, where it constitutes 80% of the total collagen content [86]. Within the joint, it provides stability and resiliency to

stress [86]. Forty percent of all bone cancers originates from cartilage, however bone cancers accounts for less than 0.2% of all cancers [87] and therefore very little is known about type II collagen and its relation to cancer. However, a few studies have shown that type II collagen can affect cell behavior and that the type II collagen fragment PIIBNP can inhibit osteoclast survival and induce cell death in tumor cells [88–90].

Type III collagen

Type III collagen is the second most abundant collagen and is often distributed close to type I collagen. It is primarily found in vascular systems, intestine, liver, skin and lung [86]. Like type I collagen, type III collagen distribution is augmented in many cancer diseases such as head and neck squamous cell cancer (HNSCC), breast, pancreas and colorectal cancer [21, 22, 34, 91–94]. In colon cancer, the distribution of type III collagen is especially augmented next to neovascular tissue [34, 91].

Pancreas cancer cells grown on type III collagen show increased proliferation, migration and decreased expression of E-cadherin [82]. Moreover, type III collagen is involved in invasion and metastasis of glioblastoma cells. These cells show high invasion and migration response when exposed to type III collagen and antibodies against type III collagen inhibit these processes [73]. Another study, report that collagen III is one of few genes that are modified, when invasive prostate cancer cells interact with bone marrow stromal cells, within the bone microenvironment. This interaction is crucial for the metastasis process, which further suggests an involvement of type III collagen in invasion and metastasis [74].

Type V collagen

Type V collagen is a minor fibrillary collagen expressed in same tissues as collagen I and III, and helps in the formation of tissue specific matrices [86, 95]. Especially, the $\alpha 3$ chain of type V collagen has shown to be involved in cancer biology. When injecting breast tumor cells into mice deficient of the $\alpha 3$ chain in collagen 5 (Col5a3^{-/-}) tumor growth is reduced and survival prolonged compared to wildtype littermates [96]. In addition, Col5a3^{-/-} cancer cells injected into Col5a3^{-/-} and Col5a3^{+/+} mice prolonged survival significantly in both genotypes compared to injection of cells containing the collagen V $\alpha 3$ chain [96]. Thus, these two examples suggest that the presence of the collagen V $\alpha 3$ chain promote tumor growth.

Type VI collagen

Type VI collagen is present in many tissues such as adipose, cartilage, skin, cornea, tendon, lung, skeletal muscle and dermis. It is located near the BM where it functions as a mediator between the BM and IM via its

Table 1 Overview of collagen type I, II, III, V, VI, XXIV and XXVII and their distribution in healthy tissue, cancer tissue, tumor promoting effects and liquid biomarker potential

Collagen type	Description	Reference
Collagen type I:		
• Tissue distribution	Main organic compound in bone. Also present in soft tissue.	[75]
• Tissue distribution in associated cancers	Major implications in bone cancer, and metastasis from bone to other solid tumors. Also described in breast, colorectal, ovarian, lung and pancreas cancer.	[21, 23, 24, 76–85]
• Tumor promoting effects	Associated with apoptosis, invasion, metastasis and proliferation.	[81–85]
• Liquid biomarker potential	Associated with bone metastasis in prostate and breast cancer patients. Increased in serum from colorectal, lung and pancreas cancer patients.	[21–25]
Collagen II		
• Tissue distribution	Main collagen in cartilage.	[86]
• Tissue distribution in associated cancers	Associated with chondrosarcoma	[88–90]
• Tumor promoting effects	Associated with cell death and survival	[88–90]
• Liquid biomarker potential	n/a	
Collagen type III		
• Tissue distribution	Primarily found in the vascular system, intestine, liver, skin and lung.	[86]
• Tissue distribution in associated cancers	Implications in breast, colorectal, HNSCC and pancreas cancer.	[21, 22, 34, 91–94]
• Tumor promoting effects	Associated with invasion, metastasis, migration and proliferation.	[73, 74, 82]
• Liquid biomarker potential	Augmented in serum from ovarian, breast, colorectal, melanoma and pancreas cancer patients. Able to predict pancreas cancer patients most likely to respond to treatment.	[21, 24, 94, 131]
Collagen type V		
• Tissue distribution	Primarily in same tissues as collagen type I and III.	[86, 95]
• Tissue distribution in associated cancers	Associated with breast cancer.	[96]
• Tumor promoting effects	Associated with tumor growth.	[96]
• Liquid biomarker potential	n/a	
Collagen type VI		
• Tissue distribution	Present in many tissues such as adipose, cartilage, skin, cornea, tendon, lung, skeletal muscle and dermis.	[97]
• Tissue distribution in associated cancers	Described in breast, colorectal, ovarian, gliomas, melanomas and pancreas cancer.	[98]
• Tumor promoting effects	Associated with apoptosis, drug resistance, inflammation, invasion, metastasis and proliferation.	[97–106]
• Liquid biomarker potential	Augmented in serum from melanoma and pancreas cancer patients.	[132, 133]
Collagen type XI		
• Tissue distribution	Distributed in low levels in skeletal muscle, trabecular bone, tendons, testis, trachea, articular cartilage, lung, placenta and brain.	[107–114]
• Tissue distribution in associated cancers	Extremely augmented in colorectal and HNSCC cancer. Also associated with breast, gastric, lung, ovarian and pancreas cancer.	[107–114]
• Tumor promoting effects	Highly implicated in CAF biology. Also associated with invasion, metastasis and proliferation.	[107–119]
• Liquid biomarker potential	n/a	
Collagen type XXIV		
• Tissue distribution	Distributed in ovaries, testis, liver, spleen, kidney, muscle and bone.	[120–122]
• Tissue distribution in associated cancers	Associated with HNSCC.	[123]
• Tumor promoting effects	Associated with cell differentiation.	[123]
• Liquid biomarker potential	n/a	
Collagen type XXVII		

Table 1 Overview of collagen type I, II, III, V, VI, XXIV and XXVII and their distribution in healthy tissue, cancer tissue, tumor promoting effects and liquid biomarker potential (*Continued*)

Collagen type	Description	Reference
• Tissue distribution	Expressed in the developing eyes, ears, lungs, heart and arteries.	[124–126]
• Tissue distribution in associated cancers	n/a	
• Tumor promoting effects	n/a	
• Liquid biomarker potential	n/a	

HNSCC Head and neck squamous cell carcinoma, n/a not available

many binding sites in both matrices. It can bind to a wide variety of proteins such as type I, II, IV, XIV collagen, integrin's, fibronectin, tenascin etc. Type VI collagen has many roles covering structural purposes to more cell-specific functions including regulation of apoptosis, proliferation, differentiation and maintenance of cell stemness [97]. Collagen VI expression is increased in many human tumors such as glioblastomas, melanomas, ovarian, pancreatic, breast and colon cancer [98]. In vitro and in vivo studies have shown that collagen VI increase proliferation and decrease apoptosis in breast, melanoma and glioblastoma cell lines [97, 98]. Apart from its direct stimulatory effects on tumor cells, collagen VI also affects the tumor microenvironment by promoting angiogenesis and inflammation [98, 99]. Collagen VI deficiency (*col6^{-/-}*) inhibit endothelial cell growth and sprouting of new vessels in a melanoma mouse model. Regarding inflammation, macrophages has been shown to produce type VI collagen, which in this context, modulate cell-to-matrix and cell-to-cell interactions [100]. Lastly, type VI collagen has shown to affect the invasion-profile of glioblastoma and lung-cancer cell [101, 102].

A number of studies have shown, that the $\alpha 3$ chain and the C5 domain of the $\alpha 3$ chain, also called endotrophin is involved in many hallmarks in cancer such as promoting proliferation, angiogenesis, metastasis and chemotherapy resistance. Type VI collagen $\alpha 3$ is distributed in high amounts in lung, ovarian, pancreatic, colon and breast cancer tissues [98]. Endotrophin has been found to promote metastasis in breast cancer and recruit endothelial cells to the tumor microenvironment [99]. This study also reported that endotrophin facilitate tumor cell proliferation and metastasis through TGF- β activation as well as promote inflammation in the tumor microenvironment by upregulating inflammatory markers such as interleukin-6 and TNF- α [99]. In the context of chemotherapy resistance collagen VI $\alpha 3$ is one of the most highly expressed genes in cisplatin and oxaliplatin resistant ovarian cancer cells [103, 104]. In addition, endotrophin is highly upregulated in cisplatin resistant breast tumor cells, and inhibition of endotrophin lead to cisplatin sensitivity in a breast tumor mouse model [105]. Metallothioneins,

which are associated with cisplatin resistance, are highly upregulated in breast cancer cells treated with collagen VI, which could be one of the explanations for the chemotherapy resistance, as suggested by Iangyar et al. [106].

Type XI collagen

Type XI collagen is present in low levels in skeletal muscle, trabecular bone, tendons, testis, trachea, articular cartilage, lung, placenta and in the brain. It is a minor fibrillar collagen, which co-polymerize with type II collagen and type IX collagen. In cartilage, it is extremely important for proper function, as absence of type XI collagen lead to abnormal thickening of the tissue. Collagen XI has long been suspected to be of high impact in cancer formation, and especially the $\alpha 1$ chain of collagen XI has shown to be an important player in various cancer diseases. The gene signature of type XI collagen is upregulated in breast, gastric, pancreatic, and non-small lung cancer. Interestingly, in both colon and HNSCC the expression is extremely increased with almost no expression in healthy controls [107–114]. Knock down of type XI $\alpha 1$ collagen in HNSCC and ovarian cancer cell lines, significantly decrease proliferation, invasion and migration compared to controls, which highlight type XI collagens importance in cancer [107, 115]. In breast and ovarian cancer collagen XI $\alpha 1$ has also been associated with resistant to chemotherapy [116, 117].

Type XI collagen is highly associated with CAFs. CAFs originating from HNSCC, lung cancer and pancreas cancer tissue express higher levels of collagen XI $\alpha 1$ than cells arrived from healthy tissue [107, 110, 118]. In ovarian and pancreatic cancer CAFs strongly stain for collagen XI $\alpha 1$, compared to no staining in epithelial cancer cells and healthy tissue [110, 119].

Type XXIV

Type XXIV collagen is expressed in ovaries, testis, liver, spleen, lung, kidney, muscle and bone and is located close to type I and V collagen [120–122].

As with type II collagen very little is known regarding type XXIV collagen in relation to cancer. Type XXIV collagen has been associated with osteoblast differentiation

with the expression increased in tumor tissue from patients suffering from HNSCC [123].

Type XXVII

Like type XXIV collagen, type XXVII is a relatively poorly characterized collagen. During embryogenesis in mice COL27A is expressed in the developing eyes, ears, lungs, heart and arteries [124, 125]. However, in adults it is primarily expressed in cartilage, and is therefore thought to play a role in the development phases [126]. Type XXVII collagens role in cancer is yet to be investigated.

Stromal derived biomarkers in clinical cancer research

A number of studies have investigated the possibility of using CAFs as prognostic markers in different cancer diseases. The most widely CAF biomarkers used for this are α -SMA, Vimentin, collagen XIa, fibronectin, FSP-1 and FAP. In esophageal cancer α -SMA and FSP-1 positive staining correlates with larger tumor size, advanced T-stage and shorter survival [127]. FAP is highly expressed in CAFs and present in many different cancer types, and has been associated with shorter survival in lung, esophageal and breast cancer [47, 128]. CAFs are very complex cells and the CAF markers used today display cellular overlaps, and have to be used in combinations [129]. Therefore, developing specific CAF biomarkers or biomarkers measuring CAF activity, i.e. disease progression, should be of high priority.

The existing CAF biomarkers are mainly based on immunohistochemistry, which rely on tissue biopsies. Although such tissue biomarkers are still the golden standard for tumor characterization, there are several benefits of developing biomarkers based on liquid biopsies (e.g. serum, plasma, urine). Besides being non-invasive, cost-effective and highly repeatable, liquid biopsies are also a real-time representative for the entire tumor heterogeneity, and not just a snapshot of the tumor tissue here and now [130].

The formation and degradation of fibroblast-derived collagens, during desmoplasia, are mediated by CAFs [33]. Thus, collagen fragments could be a measure of CAF activity. Interestingly, formation- and degradation products, in serum, from fibroblast-derived collagens show diagnostic and prognostic value. Degradation products from collagen I are significantly increased in colorectal cancer and able to differentiate stage IV colorectal cancer from stage I-III. [24]. The same trend is seen in ovarian, breast, lung and pancreas cancer patients, where degradation products from collagen I can distinguish cancer patients from healthy controls [21–23]. Moreover, a strong association between formation products from collagen I and the amount of bone metastasizes is seen in prostate and breast cancer [25].

Collagen III formation and degradation products are elevated in ovarian and breast cancer patients, and capable of distinguishing cancer patients from healthy controls [21]. This is also shown for colorectal cancer where collagen III products are significantly elevated and correlate with tumor stage [24]. Interestingly, the ratio of formation and degradation markers of collagen III has shown to be capable of predicting pancreas patients most likely to respond to the hyaluronan targeting drug PEGPH20 (pegvorhyaluronidase alfa) [131]. In addition, a high ratio predicts increased overall survival in melanoma patients [94]. Lastly, serum levels of collagen VI are increased in melanoma and pancreatic cancer patients [132, 133].

Another potential role of collagen biomarkers are related to anti-TGF- β therapies that are emerging as novel treatments options, in particular in the immuno-oncology setting. TGF- β is a complex molecule with many roles in cancer [103, 134] amongst others TGF- β stimulate CAFs to produce collagens [28, 135]. Hence collagen turnover fragments may be predictive of a TGF- β driven phenotype and hence be used to identify patients benefiting from such treatment. In addition, these collagen biomarkers may be used to monitor on target effects of TGF- β and reveal valued information on mode of action of the compound investigated. A recent study has shown that the assembly of collagens can trap T-cells preventing them to access the tumor, and induce T-cell dependent cell death [136]. This complicate the use of immune therapy and could be a reason to why only a subset of patients respond to therapy. In the last mentioned study, the occurrence of TGF- β producing fibroblasts was strongly associated with lack of therapy response [136]. In this respect, collagen levels have the potential to be used as precision medicine to select patients most likely to respond to treatment.

Conclusion

Alterations in tissue microarchitecture is a hallmark of cancer driven by CAFs and the associated deposition of collagens in the tumor stroma, which amongst other things leads to desmoplasia, poor prognosis and therapy resistance. In this review we have highlighted the link between CAFs, the fibrillar collagens produced by CAFs, and tumorigenesis. We provide a rationale for studying CAF-derived collagens in greater detail, to improve the understanding of tumor biology and patient characteristics. Lastly, we argue that a major biomarker potential lies in the fact that these collagen products can be measured in a liquid biopsy, providing a surrogate measure of desmoplasia and CAF activity. Future biomarker research should focus on implementing such biomarker tools in the clinical setting for phenotyping of cancer patients and potentially for predicting and monitoring response to treatment.

Abbreviations

BM: Basement membrane; CAF: Cancer associated fibroblast; ECM: Extracellular matrix; FAP: Fibroblast activating protein; FSP-1: Fibroblast specific protein 1; HNSCC: Head and neck squamous cell cancer; IM: Interstitial matrix; LOX: Lysyl oxidase; MMP: Metalloproteinases; n/a: Not available; TGF- β : Transforming growth factor beta; α -SMA: alpha-smooth muscle actin

Acknowledgements

Not applicable.

Funding

This review was supported by the Danish Research Foundation (Den Danske Forskningsfond).

Availability of data and materials

Not applicable.

Authors' contributions

Conception of the work: NIN, MK and NW. Drafting of the article: NIN and NW. Preparing figures: NIN. Critical revision of the article: MK and NW. Final approval: NIN, MK and NW.

Ethics approval and consent to participate

Not applicable.

Consent for publication

All authors of this paper have approved the final version of the manuscript.

Competing interests

All authors are employed at Nordic Bioscience involved in the discovery and development of serological biomarkers.

Publisher's Note

Springer Nature remains neutral with regard to jurisdictional claims in published maps and institutional affiliations.

Received: 31 October 2018 Accepted: 15 February 2019

Published online: 06 March 2019

References

- Theocharis AD, Skandalis SS, Gialeli C, Karamanos NK. Extracellular matrix structure. *Adv Drug Deliv Rev.* 2016;97:4–27. Available from: <https://doi.org/10.1016/j.addr.2015.11.001>.
- Frantz C, Stewart KM, Weaver VM. The extracellular matrix at a glance. *J Cell Sci.* 2010;123(24):4195–200. Available from: <https://doi.org/10.1242/jcs.023820>.
- Ricard-blum S. The collagen family. *Cold Spring Harb Perspect Biol.* 2011; 3(1):1–19.
- Ivarsson M, McWhirter a, Borg TK, Rubin K. Type I collagen synthesis in cultured human fibroblasts: regulation by cell spreading, platelet-derived growth factor and interactions with collagen fibers. *Matrix Biol.* 1998;
- Gay S, Martin GR, Müller PK, Timpl R, Kuhn K. Simultaneous synthesis of types I and III collagen by fibroblasts in culture. *Proc Natl Acad Sci U S A.* 1976;73(11):4037–40 Available from: <http://www.pubmedcentral.nih.gov/articlerender.fcgi?artid=431318&tool=pmcentrez&rendertype=abstract>.
- Sampath Narayanan A, Page RC. Synthesis of type V collagen by fibroblasts derived from Normal, inflamed and hyperplastic human connective tissues. *Top Catal* 1985;5(4):297–304. Available from: [https://doi.org/10.1016/S0174-173X\(85\)80019-4](https://doi.org/10.1016/S0174-173X(85)80019-4)
- Zou Y, Zhang RZ, Sabatelli P, Chu ML, Bönnemann CG. Muscle interstitial fibroblasts are the main source of collagen VI synthesis in skeletal muscle: implications for congenital muscular dystrophy types Ullrich and Bethlem. *J Neuropathol Exp Neurol.* 2008.
- Oxford JT, Doege KJ, Horton WE, Morris NP. Characterization of type II and type XI collagen synthesis by an immortalized rat chondrocyte cell line (IRC) having a low level of type II collagen mRNA expression. *Exp Cell Res.* 1994.
- Bonnans C, Chou J, Werb Z. Remodelling the extracellular matrix in development and disease. *Nat rev mol cell biol.* 2014;15(12):786–801.
- Mason SD, Joyce J. a. Proteolytic networks in Cancer. *Trends Cell Biol.* 2011; 21(4):1–18.
- Kalluri R. Basement membranes: structure, assembly and role in tumour angiogenesis. *Nat Rev Cancer.* 2003;3(6):422–33.
- Tanjore H, Kalluri R. The role of type IV collagen and basement membranes in cancer progression and metastasis. *Am J Pathol.* 2006;168(3):715–7.
- Xu J, Rodriguez D, Petitclerc E, Kim JJ, Hangai M, Moon Yuen S, et al. Proteolytic exposure of a cryptic site within collagen type IV is required for angiogenesis and tumor growth in vivo. *J Cell Biol.* 2001;154(5):1069–79.
- Xu J, Rodriguez D, Kim JJ, Brooks PC. Generation of monoclonal antibodies to cryptic collagen sites by using subtractive immunization. *Hybridoma.* 2000;19(5):375–85.
- O'Reilly MS, Boehm T, Shing Y, Fukai N, Vasios G, Lane WS, et al. Endostatin: an endogenous inhibitor of angiogenesis and tumor growth. *Cell.* 1997; 88(2):277–85.
- Kalluri R. The biology and function of fibroblasts in cancer. *Nat Rev Cancer.* 2016;16(9):582–98. Available from: <https://doi.org/10.1038/nrc.2016.73>.
- Kalluri R, Zeisberg M. Fibroblasts in cancer. *Nat Rev Cancer.* 2006;6(5):392–401.
- Sasser K, Hall B. Encyclopedia of Cancer, Desmoplasia [internet]; 2011. Available from: <https://doi.org/10.1007/978-3-662-46875-3>.
- Pankova D, Chen Y, Terajima M, Schliekelman MJ, Baird BN, Fahrenholtz M, et al. Cancer-associated fibroblasts induce a collagen cross-link switch in tumor stroma. *Mol Cancer Res.* 2016;14(3):287–95. Available from: <https://doi.org/10.1158/1541-7786.MCR-15-0307>.
- Pickup MW, Mouw JK, Weaver VM. The extracellular matrix modulates the hallmarks of cancer. *EMBO Rep.* 2014 Dec;15(12):1243–53.
- Bager CL, Willumsen N, Leeming DJ, Smith V, Karsdal MA, Dornan D, et al. Collagen degradation products measured in serum can separate ovarian and breast cancer patients from healthy controls: a preliminary study. *Cancer Biomarkers.* 2015;15(6):783–8.
- Willumsen N, Bager CL, Leeming DJ, Smith V, Karsdal M a, Dornan D, et al. Extracellular matrix specific protein fingerprints measured in serum can separate pancreatic cancer patients from healthy controls. *BMC Cancer [Internet].* 2013;13:554. Available from: <http://www.pubmedcentral.nih.gov/articlerender.fcgi?artid=4222497&tool=pmcentrez&rendertype=abstract%5Cnhttp://www.ncbi.nlm.nih.gov/pubmed/24261855>
- Willumsen N, Bager CL, Leeming DJ, Smith V, Christiansen C, Karsdal MA, et al. Serum biomarkers reflecting specific tumor tissue remodeling processes are valuable diagnostic tools for lung cancer. *Cancer Med.* 2014;3(5):1136–45.
- Kehlet SN, Sanz-Pamplona R, Brix S, Leeming DJ, Karsdal MA, Moreno V. Excessive collagen turnover products are released during colorectal cancer progression and elevated in serum from metastatic colorectal cancer patients. *Sci Rep [Internet]* 2016;6(July):1–7. Available from: <https://doi.org/10.1038/srep30599>
- Leeming DJ, Koizumi M, Qvist P, Barkholt V, Zhang C, Henriksen K, et al. Serum N-Terminal Propeptide of Collagen Type I is Associated with the Number of Bone Metastases in Breast and Prostate Cancer and Correlates to Other Bone Related Markers. *Biomark Cancer [Internet].* 2011;3:15–23. Available from: <https://www.ncbi.nlm.nih.gov/pubmed/24179387>
- Cirri P, Chiarugi P. Cancer associated fibroblasts: the dark side of the coin. *Am J Cancer Res [Internet]* 2011;1(4):482–497. Available from: <http://www.pubmedcentral.nih.gov/articlerender.fcgi?artid=3186047&tool=pmcentrez&rendertype=abstract>
- Öhlund D, Elyada E, Tuveson D. Fibroblast heterogeneity in the cancer wound. *J Exp Med [Internet]* 2014;211(8):1503–1523. Available from: <https://doi.org/10.1084/jem.20140692>
- Meng X, Nikolic-Petersen D, Lan H. TGF- β the master regulator of fibrosis. *Pdf. Nat Rev Nephrol.* 2016;12(6):325–38.
- Mertens JC, Fingas CD, Christensen JD, Smoot RL, Bronk SF, Werneburg NW, et al. Therapeutic effects of deleting cancer-associated fibroblasts in cholangiocarcinoma. *Cancer Res.* 2013.
- Cadamura M, Indraccolo S, Dall'olmo L, Sambado L, Moserle L, Franceschet I, Colledan M, Massani M, Stecca T, Bassi N, Morton S, Spirli C, Fiorotto R, Fabris L, Strazzabosco M. Platelet-derived growth factor-D and Rho GTPases regulate recruitment of cancer-associated fibroblasts in cholangiocarcinoma. *Hepatology* 2013;58(3):1042–1053, PMID: 23505219. doi: <https://doi.org/10.1002/hep.26384>, Available from: <https://www.ncbi.nlm.nih.gov/pubmed/23505219>
- Radisky DC, Kenny PA, Bissell MJ. Fibrosis and Cancer: do Myofibroblasts come also from epithelial cells via EMT. *NIH Public Access.* 2007;101(4):830–9.
- Zeisberg EM, Potenta S, Xie L, Zeisberg M, Kalluri R. Discovery of endothelial to mesenchymal transition as a source for carcinoma-associated fibroblasts. *Cancer Res.* 2007;67(21):10123–8.

33. Gascard P, Tlsty TD. Carcinoma-associated fibroblasts: orchestrating the composition of malignancy. *Genes Dev.* 2016;30(9):1002–19.
34. Kauppila S, Stenback F, Risteli J, Jukkola A, Risteli L. Aberrant type I and type III collagen gene expression in human breast cancer in vivo. *J Pathol.* 1998; 268(July):262–8.
35. Hanley CJ, Noble F, Ward M, Bullock M, Drifka C, Mellone M, et al. A subset of myofibroblastic cancer-associated fibroblasts regulate collagen fiber elongation, which is prognostic in multiple cancers. *Oncotarget* [Internet] 2016;7(5):6159–6174. Available from: <https://www.ncbi.nlm.nih.gov/pubmed/26716418>
36. Öhlund D, Handly-Santana A, Biffi G, Elyada E, Almeida AS, Ponz-Sarvise M, et al. Distinct populations of inflammatory fibroblasts and myofibroblasts in pancreatic cancer. *J Exp Med.* 2017.
37. Madar S, Goldstein I, Rotter V. "Cancer associated fibroblasts" - more than meets the eye. *Trends in Molecular Medicine.* 2013.
38. Wagner EF. Cancer: fibroblasts for all seasons. *Nature.* 2016.
39. Glentis A, Oertle P, Mariani P, Chikina A, El Marjou F, Attieh Y, et al. Cancer-associated fibroblasts induce metalloprotease-independent cancer cell invasion of the basement membrane. *Nat Commun* [Internet]. 2017;8(1):1–13. Available from: <https://doi.org/10.1038/s41467-017-00985-8>
40. Alkaskas T, Moyano-Galceran L, Arsenian-Henriksson M, Lehti K. Fibroblasts in the tumor microenvironment: shield or spear? *International journal of molecular sciences*; 2018.
41. Shekhar MP, Werdell J, Santner SJ, Pauley RJ, Tait L. Breast stroma plays a dominant regulatory role in breast epithelial growth and differentiation: implications for tumor development and progression. *Cancer res* [internet]. 2001;61(4):1320–1326. Available from: <http://www.ncbi.nlm.nih.gov/pubmed/11245428>.
42. Kuperwasser C, Chavarría T, Wu M, Magrane G, Gray JW, Carey L, et al. Reconstruction of functionally normal and malignant human breast tissues in mice. *Proc Natl Acad Sci U S A* [Internet] 2004;101(14):4966–4971. Available from: <https://www.ncbi.nlm.nih.gov/pubmed/15051869>
43. Olumi AF, Grossfeld GD, Hayward SW, Carroll PR, Tlsty TD, Cunha GR. Carcinoma-associated Fibroblasts Direct Tumor Progression of Initiated Human Prostatic Epithelium.pdf. *Ep Prostatic.* 1999;5002–5011.
44. Orimo A, Gupta PB, SgROI DC, Arenzana-Seisdedos F, Delaunay T, Naeem R, et al. Stromal fibroblasts present in invasive human breast carcinomas promote tumor growth and angiogenesis through elevated SDF-1/CXCL12 secretion. *Cell.* 2005;121(3):335–48.
45. Wang L, Cao L, Wang H, Liu B, Zhang Q, Meng Z, et al. Cancer-associated fibroblasts enhance metastatic potential of lung cancer cells through IL-6/STAT3 signaling pathway. *Oncotarget* [Internet]. 2017;8(44):76116–76128. Available from: <http://www.oncotarget.com/fulltext/18814>
46. Murata T, Mekada E, Hoffman RM. Reconstitution of a metastatic-resistant tumor microenvironment with cancer-associated fibroblasts enables metastasis. *Cell Cycle* [Internet] 2017;16(6):533–535. Available from: <https://doi.org/10.1080/15384101.2017.1281486>
47. Kashima H, Noma K, Ohara T, Kato T, Katsura Y, Komoto S, et al. Cancer-associated fibroblasts (CAFs) promote the lymph node metastasis of esophageal squamous cell carcinoma. *Int J Cancer.* 2018.
48. Cohen N, Shani O, Raz Y, Sharon Y, Hoffman D, Abramovitz L, et al. Fibroblasts drive an immunosuppressive and growth-promoting microenvironment in breast cancer via secretion of Chitinase 3-like 1. *Oncogene.* 2017.
49. Erez N, Glanz S, Raz Y, Avivi C, Barshack I. Cancer Associated Fibroblasts express pro-inflammatory factors in human breast and ovarian tumors. *Biochem Biophys Res Commun.* 2013.
50. Balachander GM, Talukdar PM, Debnath M, Rangarajan A, Chatterjee K. Inflammatory Role of Cancer-Associated Fibroblasts in Invasive Breast Tumors Revealed Using a Fibrous Polymer Scaffold. *ACS Appl Mater Interfaces.* 2018;
51. Lim H, Moon A. Inflammatory fibroblasts in cancer. *Arch Pharm Res.* 2016.
52. Attieh Y, Clark AG, Grass C, Richon S, Pocard M, Mariani P, et al. Cancer-associated fibroblasts lead tumor invasion through integrin-beta3-dependent fibronectin assembly. *J Cell Biol.* 2017;216(11):1–12.
53. McCarthy JB, El-Ashry D, Turley EA. Hyaluronan, Cancer-associated fibroblasts and the tumor microenvironment in malignant progression. *Front Cell Dev Biol* [Internet] 2018;6(May):1–13. Available from: <https://doi.org/10.3389/fcell.2018.00048/full>
54. Zanonato F, Cordenonsi M, Piccolo S. YAP/TAZ at the Roots of Cancer. *Cancer Cell.* 2016.
55. Calvo F, Ege N, Grande-García A, Hooper S, Jenkins RP, Chaudhry SI, et al. Mechanotransduction and YAP-dependent matrix remodelling is required for the generation and maintenance of cancer-associated fibroblasts. *Nat Cell Biol.* 2013.
56. Cadamuro M, Nardo G, Indraccolo S, Dall'Olmo L, Sambado L, Moserle L, et al. Platelet-derived growth factor-D and Rho GTPases regulate recruitment of cancer-associated fibroblasts in cholangiocarcinoma. *Hepatology.* 2013.
57. Ge J, Burnier L, Adamopoulou M, Kwa MQ, Schaks M, Rottner K, et al. RhoA, Rac1, and Cdc42 differentially regulate SMA and collagen I expression in mesenchymal stem cells. *J Biol Chem.* 2018.
58. Drifka CR, Loeffler AG, Mathewson K, Keikhosravi A, Eickhoff JC, Liu Y, et al. Highly aligned stromal collagen is a negative prognostic factor following pancreatic ductal adenocarcinoma resection. *Oncotarget* [Internet]. 2016; 7(46). Available from: <https://www.ncbi.nlm.nih.gov/pubmed/27776346>
59. Shiga K, Hara M, Nagasaki T, Sato T, Takahashi H, Takeyama H. Cancer-associated fibroblasts: their characteristics and their roles in tumor growth. *Cancers (Basel)* 2015;7(4):2443–2458.
60. Heldin CH, Rubin K, Pietras K, Östman A. High interstitial fluid pressure - an obstacle in cancer therapy. *Nat Rev Cancer.* 2004;4(10):806–13.
61. Fang M, Yuan J, Peng C, Li Y. Collagen as a double-edged sword in tumor progression. *Tumor Biol.* 2014;35(4):2871–82.
62. Rhim AD, Oberstein PE, Thomas DH, Mirek ET, Palermo CF, Sastra SA, et al. Stromal elements act to restrain, rather than support, pancreatic ductal adenocarcinoma. *Cancer Cell.* 2014;25(6):735–47.
63. Özdemir BC, Pentcheva-Hoang T, Carstens JL, Zheng X, Wu CC, Simpson TR, et al. Depletion of carcinoma-associated fibroblasts and fibrosis induces immunosuppression and accelerates pancreas cancer with reduced survival. *Cancer Cell.* 2014;25(6):719–34.
64. Froeling FEM, Kocher HM. Homeostatic restoration of desmoplastic stroma rather than its ablation slows pancreatic cancer progression. *Gastroenterology.* 2015 Apr;148(4):849–50.
65. Lo A, Wang L-CS, Scholler J, Monslow J, Avery D, Newick K, et al. Tumor-promoting Desmoplasia is disrupted by depleting FAP-expressing stromal cells. *Cancer Res.* 2018;75(14):2800–10.
66. Surowiak P, Murawa D, Materna V, Maciejczyk A, Pudelko M, Ciesla S, et al. Occurrence of stromal myofibroblasts in the invasive ductal breast cancer tissue is an unfavourable prognostic factor. *Anticancer Res.* 2007;27(4 C): 2917–24.
67. Marsh D, Suchak K, Moutasim KA, Vallath S, Hopper C, Jerjes W, et al. Stromal features are predictive of disease mortality in oral cancer patients. *J Pathol.* 2011;223(4):470–81.
68. Kellermann MG, Sobral LM, Silva SD da, Zecchin KG, Graner E, Lopes MA, et al. Myofibroblasts in the stroma of oral squamous cell carcinoma are associated with poor prognosis. *Histopathology* [Internet] 2007;51(6):849–853. Available from: <https://doi.org/10.1111/j.1365-2559.2007.02873.x>
69. Tsujino T, Seshimo I, Yamamoto H, Chew YN, Ezumi K, Takemasa I, et al. Stromal myofibroblasts predict disease recurrence for colorectal cancer. *Clin Cancer Res.* 2007;13(7):2082–90.
70. Saadi A, Shannon NB, Lao-Sirieix P, O'Donovan M, Walker E, Clemons NJ, et al. Stromal genes discriminate preinvasive from invasive disease, predict outcome, and highlight inflammatory pathways in digestive cancers. *Proc Natl Acad Sci* [Internet] 2010;107(5):2177–2182. Available from: <https://doi.org/10.1073/pnas.0909797107>
71. Karsdal MA, Nielsen SH, Leeming DJ, Langholm LL, Nielsen MJ, Manon-Jensen T, et al. The good and the bad collagens of fibrosis – their role in signaling and organ function. *Adv Drug Deliv Rev.* 2017;121:43–56.
72. Brisson BK, Mauldin EA, Lei W, Vogel LK, Power AM, Lo A, et al. Type III collagen directs stromal organization and limits metastasis in a murine model of breast cancer. *Am J Pathol* [Internet] 2015;185(5):1471–1486. Available from: <https://doi.org/10.1016/j.ajpath.2015.01.029>
73. Chintala S, Sawaya R, Gokaslan Z, Rao J. The effect of type III collagen on migration and invasion of human. *Cancer Lett.* 1996;102:57–63.
74. Hirai K, Shimada H, Ogawa T, Taji S. The spread of human lung cancer cells on collagens and its inhibition by type III collagen. *Clin Exp Metastasis.* 1991;9:517–27.
75. Kanematsu A, Marui A, Yamamoto S, Ozeki M, Hirano Y, Yamamoto M, et al. Type I collagen can function as a reservoir of basic fibroblast growth factor. *J Control Release.* 2004;99(2):281–92.
76. Zhao H, Han K-LL, Wang Z-YY, Chen Y, Li H-TT, Zeng J-LL, et al. Value of C-telopeptide-cross-linked type I collagen, osteocalcin, bone-specific alkaline phosphatase and procollagen type I N-terminal propeptide in the diagnosis

- and prognosis of bone metastasis in patients with malignant tumors. *Med Sci Monit* [Internet]. 2011;17(11):CR626-CR633. Available from: <http://www.ncbi.nlm.nih.gov/pubmed/22037741>.
77. Cloos PAC, Fedelius C, Christgau S, Christiansen C, Engsig M, Delmas P, et al. Calcif Tissue Int: Investigation of bone disease using isomerized and racemized fragments of type I collagen; 2003.
 78. Hall CL, Dai J, van Golen KL, Keller ET, Long MW. Type I collagen receptor (alpha 2 beta 1) signaling promotes the growth of human prostate cancer cells within the bone. *Cancer Res*. 2006.
 79. Ferreira AR, Alho I, Shan N, Matias M, Faria M, Casimiro S, et al. N-Telopeptide of type I collagen Long-term dynamics in breast Cancer patients with bone metastases: clinical outcomes and influence of Extraskelatal metastases. *Oncologist* [Internet] 2016;21(12):1418–1426. Available from: <https://doi.org/10.1634/theoncologist.2015-0527>
 80. Zou X, Feng B, Dong T, Yan G, Tan B, Shen H, et al. Up-regulation of type I collagen during tumorigenesis of colorectal cancer revealed by quantitative proteomic analysis. *J Proteomics* [Internet]. 2013;94:473–485. Available from: <https://doi.org/10.1016/j.jprot.2013.10.020>
 81. Armstrong T, Packham G, Murphy LB, Bateman AC, Conti JA, Fine DR, et al. Type I collagen promotes the malignant phenotype of pancreatic ductal adenocarcinoma. *ClinCancer Res* [Internet] 2004;10(21):7427–7437. Available from: <http://clincancerres.aacrjournals.org/cgi/content/abstract/10/21/7427>
 82. Menke A, Philippi C, Vogelmann R, Seidel B, Lutz MP, Adler G, et al. Down-regulation of E-cadherin gene expression by collagen type I and type III in pancreatic Cancer cell lines 1. *Biochemistry*. 2001;3508–17.
 83. Cheng JC, Leung PCK. Type I collagen down-regulates E-cadherin expression by increasing PI3KCA in cancer cells. *Cancer Lett*. 2011.
 84. Gao H, Chakraborty G, Zhang Z, Akalay I, Gadiya M, Gao Y, et al. Multi-organ site metastatic reactivation mediated by non-canonical Discoidin domain receptor 1 signaling. *Cell* [Internet] 2016;166(1):47–62. Available from: <https://doi.org/10.1016/j.cell.2016.06.009>
 85. Barcus CE, O'Leary KA, Brockman JL, Rugowski DE, Liu Y, Garcia N, et al. Elevated collagen-I augments tumor progressive signals, intravasation and metastasis of prolactin-induced estrogen receptor alpha positive mammary tumor cells. *Breast Cancer Res* [Internet] 2017;19(1):1–13. Available from: <https://doi.org/10.1186/s13058-017-0801-1>
 86. Gelse K, Pöschl E, Aigner T. Collagens - structure, function, and biosynthesis. *Adv Drug Deliv Rev*. 2003.
 87. Key Statistics About Bone Cancer [Internet]. American Cancer Society. 2018. Available from: <https://www.cancer.org/cancer/bone-cancer/about/key-statistics.html>
 88. Hayashi S, Zhepeng W, Bryan J, Kobayashi C, Faccio R, Sandell L. The type II collagen N-propeptide, PIIBNP, inhibits cell survival and bone resorption of osteoclasts via integrin-mediated signaling. *Bone*. 2011;49(4):644–52.
 89. Sipilä K, Haag S, Denessiouk K, Kapylä J, Peters EC, Denesyuk A, et al. Citrullination of collagen II affects integrin-mediated cell adhesion in a receptor-specific manner. *FASEB J*. 2014;
 90. Wang Z, Bryan J, Franz C, Havlioglu N, Sandell LJ. Type IIB procollagen NH2-propeptide induces death of tumor cells via interaction with integrins $\alpha\beta3$ and $\alpha\beta5$. *J Biol Chem*. 2010;285(27):20806–17.
 91. Hilska M, Peltonen J, Gullichsen R, Paajanen H, Laato M. The Distribution of Collagen Types I, III, and IV in Normal and Malignant Colorectal Mucosa. 1998;
 92. Nurmenniemi S, Koivula M, Nyberg P, Tervahartiala T, Sorsa T. Type I and III collagen degradation products in tumor predict patient survival in head and neck squamous cell carcinoma. *Oral Oncol* [Internet] 2012;48(2):136–140. Available from: <https://doi.org/10.1016/j.oraloncology.2011.09.002>
 93. Basso D, Belluco C, Mazza S, Greco E. Colorectal cancer metastatic phenotype stimulates production by fibroblasts of N-terminal peptide of type III collagen : clinical implications for prognosis. 2001;
 94. Jensen C, Madsen D, Hansen M, Schmidt H, Svane I, Karsdal M, et al. Altered type III collagen turnover measured in pre-treatment serum predicts outcome in metastatic melanoma patients treated with Ipilimumab. *Eur J Cancer*. 2018;92.
 95. Fichard A, Kleman JP, Ruggiero F. Another look at collagen V and XI molecules. *Matrix Biology*. 1995.
 96. Huang G, Ge G, Izzi V, Greenspan DS. $\alpha3$ chains of type v collagen regulate breast tumour growth via glypican-1. *Nat Commun* [Internet] 2017;8:1–17. Available from: <https://doi.org/10.1038/ncomms14351>
 97. Cescon M, Gattazzo F, Chen P, Bonaldo P. Collagen VI at a glance. *J Cell Sci* [Internet] 2015;128(19):3525–3531. Available from: <https://doi.org/10.1242/jcs.169748>
 98. Chen P, Cescon M, Bonaldo P. Collagen VI in cancer and its biological mechanisms. *Trends Mol Med* [Internet] 2013;19(7):410–417. Available from: <https://doi.org/10.1016/j.molmed.2013.04.001>
 99. Park J, Scherer PE. Endotrophin – linking obesity with aggressive tumor growth. *Oncotarget* [Internet] 2012;33(12):1487–1488. Available from: <https://www.ncbi.nlm.nih.gov/pmc/articles/PMC3681481/>
 100. Schnoor M, Cullen P, Lorkowski J, Stolle K, Robenek H, Troyer D, et al. Production of type VI collagen by human macrophages: a new dimension in macrophage functional heterogeneity. *J Immunol*. 2008.
 101. Wright A, Li Y-H, Zhu C, Woodruff W, Coulter H. The differential effect of endothelial cell factors on *in vitro* motility of malignant and non-malignant cells. *Ann Biomed Eng*. 2008;36(6):958–69.
 102. Han J, Daniel JC. Connect Tissue Res: Biosynthesis of type VI collagen by glioblastoma cells and possible function in cell invasion of three-dimensional matrices; 1995.
 103. Sherman-Baust CA, Weeraratna AT, Rangel LBA, Pizer ES, Cho KR, Schwartz DR, et al. Remodeling of the extracellular matrix through overexpression of collagen VI contributes to cisplatin resistance in ovarian cancer cells. *Cancer Cell*. 2003;3(4):377–86.
 104. Varma RR, Hector SM, Clark K, Greco WR, Hawthorn L, Pendyala L. Gene expression profiling of a clonal isolate of oxaliplatin-resistant ovarian carcinoma cell line A2780/C10. *Oncol Rep*. 2005.
 105. Park J, Morley TS, Scherer PE. Inhibition of endotrophin, a cleavage product of collagen VI, confers cisplatin sensitivity to tumours. *EMBO Mol Med*. 2013; 5(6):935–48.
 106. Iyengar P, Espina V, Williams TW, Lin Y, Berry D, Jelicks LA, et al. Adipocyte-derived collagen VI affects early mammary tumor progression in vivo, demonstrating a critical interaction in the tumor/stroma microenvironment. *J Clin Invest*. 2005;115(5):1163–76.
 107. Sok JC, Lee JA, Dasari S, Joyce S, Conrucci SC, Egloff AM, et al. Collagen type XI $\alpha1$ facilitates head and neck squamous cell cancer growth and invasion. *Br J Cancer* [Internet]. 2013;109(12):3049–56. Available from: <https://doi.org/10.1038/bjc.2013.624>.
 108. Ellsworth RE, Seebach J, Field L a, Heckman C, Kane J, Hooke J a, et al. A gene expression signature that defines breast cancer metastases. *Clin Exp Metastasis*. 2009;
 109. Zhao Y, Zhou T, Li A, Yao H, He F, Wang L, et al. A potential role of collagens expression in distinguishing between premalignant and malignant lesions in stomach. *Anat Rec*. 2009.
 110. García-Pravia C, Galván JA, Gutiérrez-Corral N, Solar-García L, García-Pérez E, García-Ocaña M, et al. Overexpression of COL11A1 by Cancer-associated fibroblasts: clinical relevance of a stromal marker in pancreatic Cancer. *PLoS One*. 2013;8(10):1–13.
 111. Chong IW, Chang MY, Chang HC, Yu YP, Sheu CC, Tsai JR, et al. Great potential of a panel of multiple hMTH1, SPD, ITGA11 and COL11A1 markers for diagnosis of patients with non-small cell lung cancer. *Oncol Rep*. 2006.
 112. Fischer H. Colorectal carcinogenesis is associated with stromal expression of COL11A1 and COL5A2. *Carcinogenesis*. 2001.
 113. Vecchi M, Nuciforo P, Romagnoli S, Confalonieri S, Pellegrini C, Serio G, et al. Gene expression analysis of early and advanced gastric cancers. *Oncogene*. 2007.
 114. Badea L, Herlea V, Dima SO, Dumitrascu T, Popescu I. Combined gene expression analysis of whole-tissue and microdissected pancreatic ductal adenocarcinoma identifies genes specifically overexpressed in tumor epithelia. *Hepatogastroenterology*. 2008.
 115. Wu Y-H, Chang T-H, Huang Y-F, Huang H-D, Chou C-Y. COL11A1 promotes tumor progression and predicts poor clinical outcome in ovarian cancer. *Oncogene*. 2013.
 116. Kim H, Watkinson J, Varadan V, Anastassiou D. Multi-cancer computational analysis reveals invasion-associated variant of desmoplastic reaction involving INHBA, THBS2 and COL11A1. *BMC Med Genet*. 2010.
 117. Teng PN, Wang G, Hood BL, Conrads KA, Hamilton CA, Maxwell GL, et al. Identification of candidate circulating cisplatin-resistant biomarkers from epithelial ovarian carcinoma cell secretomes. *Br J Cancer*. 2014.
 118. Navab R, Strumpf D, Bandarchi B, Zhu C, Pantiile M, Rohan V. Prognostic gene-expression signature of carcinoma-associated fibroblasts in non-small cell lung cancer. *Proc Natl Acad Sci U S A*. 2011;108(april 26th):7160–5.
 119. Cheon DJ, Tong Y, Sim MS, Dering J, Berel D, Cui X, et al. A collagen-remodeling gene signature regulated by TGF- β signaling is associated with metastasis and poor survival in serous ovarian cancer. *Clin Cancer Res*. 2014.
 120. Ricard-Blum S, Ruggiero F. The collagen superfamily: from the extracellular matrix to the cell membrane. *Pathol Biol*. 2005;53(7):430–42.

121. Koch M, Laub F, Zhou P, Hahn RA, Tanaka S, Burgeson RE, et al. Collagen XXIV, a Vertebrate Fibrillar Collagen with Structural Features of Invertebrate Collagens. *J Biol Chem* 2003;278(44):43236–44.
122. Wang W, Olson D, Liang G, Franceschi RT, Li C, Wang B, et al. Collagen XXIV (Col24a1) promotes osteoblastic differentiation and mineralization. *Int J Biol Sci*. 2012;8(10):1310–22.
123. Misawa K, Kabazawa T, Imai A, Endo S, Mochizuki D, Fukushima Hi, et al. *Mol Clin Oncol*: Prognostic value of type XXII and XXIV collagen mRNA expression in head and neck cancer patients; 2014.
124. Pace JM, Corrado M, Missero C, Byers PH. Identification, characterization and expression analysis of a new fibrillar collagen gene, COL27A1. *Matrix Biol*. 2003.
125. Plumb DA, Dhir V, Mironov A, Ferrara L, Poulsom R, Kadler KE, et al. Collagen XXVII is developmentally regulated and forms thin fibrillar structures distinct from those of classical vertebrate fibrillar collagens. *J Biol Chem*. 2007.
126. Hjorten R, Hansen U, Underwood RA, Telfer HE, Fernandes RJ, Krakow D, et al. Type XXVII collagen at the transition of cartilage to bone during skeletogenesis. *Bone*. 2007.
127. Ha SY, Yeo S-Y, Xuan Y, Kim S-H. The Prognostic Significance of Cancer-Associated Fibroblasts in Esophageal Squamous Cell Carcinoma. *PLoS One* [Internet]. 2014;9(6):e99955. Available from: <https://doi.org/10.1371/journal.pone.0099955>
128. Paulsson J, Micke P. Prognostic relevance of cancer-associated fibroblasts in human cancer. *Semin Cancer Biol* [Internet]. 2014;25:61–68. Available from: <https://doi.org/10.1016/j.semcancer.2014.02.006>
129. LeBleu VS, Kalluri R. A peek into cancer-associated fibroblasts: origins, functions and translational impact. *Dis Model Mech* [Internet]. 2018;11(4): dmm029447. Available from: <https://www.ncbi.nlm.nih.gov/pmc/articles/PMC5963854/>
130. Arancio W, Belmonte B, Castiglia M, Napoli A Di. Liquid Biopsy in Cancer Patients 2017;41–49. Available from: <https://doi.org/10.1007/978-3-319-55661-1>
131. Wang S, Willumsen N, Cecilie B, Karsdal M, Chondros D, Taverna D. Extracellular matrix (ECM) circulating peptide biomarkers as potential predictors of survival in patients (pts) with untreated metastatic pancreatic ductal adenocarcinoma (mPDA) receiving pegvorhialuronidase alfa (PEGPH20), nab-paclitaxel (a), and gemcita. *J Clin Oncol*. 2018;36(15):12030.
132. Burchardt ER, Hein R, Bosserhoff AK. Laminin, hyaluronan, tenascin-C and type VI collagen levels in sera from patients with malignant melanoma. *Clin Exp Dermatol*. 2003.
133. Kang CY, Wang J, Axell-House D, Soni P, Chu M-L, Chipitsyna G, et al. Clinical significance of serum COL6A3 in pancreatic ductal adenocarcinoma. *J Gastrointest Surg*. 2014.
134. Bierie B, Moses HL. TGFβ the molecular Jekyll and Hyde. *Nat Rev Cancer*. 2006;6.
135. Borthwick LA, Wynn TA, Fishera AJ. Cytokine mediated tissue fibrosis. *Biochim Biophys Acta*. 2013;1832(7):1049–60.
136. Mariathasan S, Turley S, Nickles D, Castiglioni A, Yuen K, Wang Y, et al. TGFβ attenuates tumour response to PD-L1 blockade by contributing to exclusion of T cells. *Nature*. 2018;22(554):544–8.

Ready to submit your research? Choose BMC and benefit from:

- fast, convenient online submission
- thorough peer review by experienced researchers in your field
- rapid publication on acceptance
- support for research data, including large and complex data types
- gold Open Access which fosters wider collaboration and increased citations
- maximum visibility for your research: over 100M website views per year

At BMC, research is always in progress.

Learn more biomedcentral.com/submissions

