

RESEARCH

Open Access

# DACH1 inhibits cyclin D1 expression, cellular proliferation and tumor growth of renal cancer cells

Qian Chu<sup>1</sup>, Na Han<sup>1</sup>, Xun Yuan<sup>1</sup>, Xin Nie<sup>1</sup>, Hua Wu<sup>1</sup>, Yu Chen<sup>1</sup>, Mingzhou Guo<sup>2</sup>, Shiyong Yu<sup>1</sup> and Kongming Wu<sup>1\*</sup>

## Abstract

**Background:** Renal cell carcinoma (RCC) is a complex with diverse biological characteristics and distinct molecular signature. New target therapies to molecules that drive RCC initiation and progression have achieved promising responses in some patients, but the total effective rate is still far from satisfaction. Dachshund (DACH1) network is a key signaling pathway for kidney development and has recently been identified as a tumor suppressor in several cancer types. However, its role in renal cell carcinoma has not been fully investigated.

**Methods:** Immunohistochemical staining for DACH1, PCNA and cyclin D1 was performed on human renal tissue microarrays and correlation with clinic-pathological characteristics was analyzed. *In vitro* proliferation, apoptosis and *in vivo* tumor growth were evaluated on human renal cancer cell lines with decitabine treatment or ectopic expression of DACH1. Downstream targets and potential molecular mechanism were investigated through western blot, immunoprecipitation and reporter gene assays.

**Results:** Expression of DACH1 was significantly decreased in human renal carcinoma tissue. DACH1 protein abundance was inversely correlated with the expression of PCNA and cyclin D1, tumor grade, and TNM stage. Restoration of DACH1 function in renal clear cell cancer cells inhibited *in vitro* cellular proliferation, S phase progression, clone formation, and *in vivo* tumor growth. In mechanism, DACH1 repressed cyclin D1 transcription through association with AP-1 protein.

**Conclusion:** Our results indicated that DACH1 was a novel molecular marker of RCC and it attributed to the malignant behavior of renal cancer cells. Re-activation of DACH1 may represent a potential therapeutic strategy.

**Keywords:** Renal carcinoma, DACH1, Tumor growth, Proliferation, Cell cycle, Cyclin D1

## Introduction

Renal cell carcinoma (RCC) is the most lethal type of genitourinary cancer and its incidence has been increased worldwide [1]. Lacking specific markers makes early diagnosis difficult. Prognosis for advanced RCC is poor because of highly metastatic and generally resistant to conventional chemotherapy and radiotherapy [2]. With the growing understanding of renal cancer biology, new agents targeting specific growth pathways have been developed. The mammalian target of rapamycin (mTOR), a serine/threonine protein kinase, regulates cell

growth, division, and survival. Clinically, mTOR inhibitors have clearly shown survival advantage than interferon-alpha [3]. Most renal clear cell carcinomas showed enhanced angiogenesis, and targeting vascular endothelial growth factor (VEGF) with either tyrosine kinases inhibitors or anti-VEGF monoclonal antibody also demonstrated superior activity in comparison to traditional chemotherapies [4]. However, even treated with the newest targeted therapeutic agents, metastatic RCC will progress in all patients due to primary or secondary resistance [5]. Obviously, RCC is a complex with diverse biological characteristics and distinct molecular signature. Many other biological factors may influence the therapeutic response of RCC. Accurate pathological characterization will guide the clinical management of RCC. Therefore, new molecular markers

\* Correspondence: kmwu@tjh.tjmu.edu.cn

<sup>1</sup>Department of Oncology, Tongji Hospital, Tongji Medical College of Huazhong University of Science and Technology, 1095 Jiefang Avenue, Wuhan, Hubei 430030, China

Full list of author information is available at the end of the article

to stratify patient risk and predict patient response to therapy for personalized medicine can further bring survival benefits [6,7].

The characterization of renal cell carcinoma based on gene expression patterns has the potential to supply significant biological and clinical insights. Kidney cancers show aberrant methylation and methylation profiles can be predictive of adverse prognosis [8]. DNA hypermethylation in CpG islands of promoter region usually results in transcriptional silencing, a common mechanism leading to the inactivation of tumor suppressor. In the search for novel epigenetic markers for clear cell renal cell carcinoma, Dr. Dalgin's group found DACH1 was among the 6 down-regulated genes with hypermethylation of promoter region [9].

DACH1, originally discovered in drosophila eye development, is an essential member of Retinal Determination Gene Network (RDGN) [10]. RDGN mainly consists of Dach, Eya and Six family members. Balanced functions of RDGN are essential for normal development of many organs, including kidney and ear [11]. Recently, altered expressions or activity of the RDGN has been documented in a variety of malignancies [12-14]. Generally, DACH1 behaves as a tumor suppressor, and its expression is reduced in several cancers. The ectopic expression of DACH1 inhibits cellular proliferation *in vitro* and tumor growth *in vivo* [15-23]. On the other hand, Six and Eya are frequently overexpressed and promote proliferation, invasion and tumorigenesis [24-28]. It is important that expression level of DACH1 can predict survival in breast cancer [15,29]. RNA protection assay and northern blot indicated that DACH1 was richly expressed in embryonal kidney cells and adult kidney tissues, but dramatically decreased in two renal cancer cells [30]. Epigenetic silencing of DACH1 mRNA was also observed in renal cancer tissues [9]. However, there were no experimental evidence and detailed clinic studies to examine the role of DACH1 in renal cancer initiation and progression. The biological function and downstream targets of DACH1 are cell context-dependent. For example, the paracrine signal repressed by DACH1 in glioma stem cells was FGF2 [19]; while DACH1 targets IL-8 in breast cancer cells [17]. The clinical significance and downstream signaling of DACH1 in RCC remain to be experimentally answered. The current study was conducted to analyze the DACH1 expression in relation to clinic-pathological characteristics and identify molecular targets of DACH1 in renal cancers.

## Results

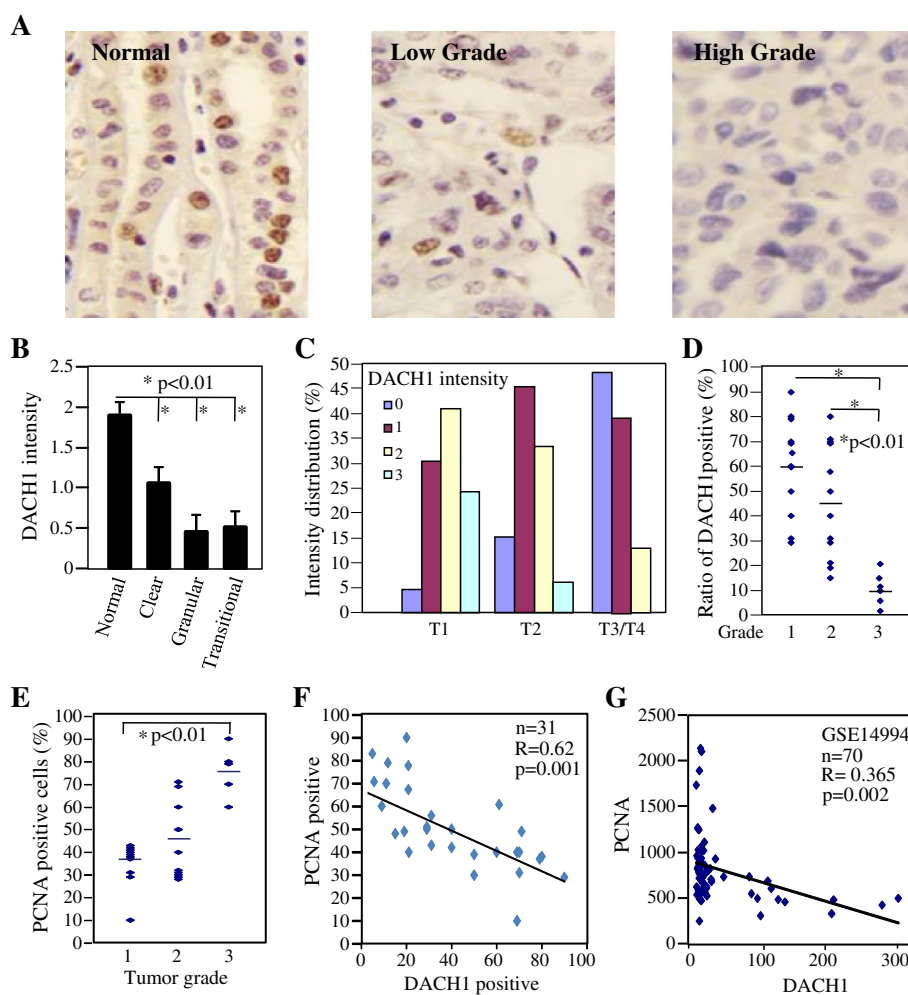
### Decreased expression of DACH1 correlates with tumor progression in renal cancer tissues

As a potential tumor suppressor, DACH1 promoted hypermethylation and correspondingly reduced expression of

DACH1 was observed in several kinds of cancers, including esophageal cancer, gastric cancer, colorectal cancer and hepatocellular carcinoma [20,22,31,32]. Epigenetics changes in 38 matched renal clear cell carcinoma and normal tissues demonstrated that DACH1 promoter region was hypermethylated in renal cell carcinoma [9]. To the best of our knowledge, there were no reports that comparing DACH1 protein abundance between renal normal and cancerous tissues. We used a well validated DACH1 polyclonal antibody to detect DACH1 expression in human renal tissue microarrays consisting of normal and different types of cancers by immunohistochemical staining. DACH1 was highly expressed in the nuclei of renal tubular cells. Although RCC originates from the tubule of kidney, DACH1 expression was markedly decreased in all 3 major types of renal cancers, including clear cell renal carcinoma and granular cell carcinoma (Figure 1A, B). Further analysis showed that DACH1 protein intensity was gradually reduced with the tumor progression. More than 85% tissues in T3/T4 tumors showed no or very weak expression (grade 0 or 1); while in early-stage tumors (T1), 65% tissues had medium or strong expression (grade 2 or 3) (Figure 1C). Moreover, on average 60% of cells in low grade cancers (grade I) expressed DACH1, less than 20% cells in grade III tumors had detectable DACH1 expression (Figure 1D). Thus the DACH1 expression was significantly reduced in cancer tissues, correlated inversely with the tumor grade and stage. Since the high proliferation is a hallmark of cancer cells and DACH1 was reported to inhibit tumor growth *in vivo* in a series of xenograft models [15,19,23], we examined PCNA expression, a surrogate marker of cellular proliferation, in a series of sections from the same sample. In consistence with previous reports, PCNA was positively related to the tumor grade (Figure 1E). Importantly, co-expression analysis demonstrated reverse relationship between protein expression of DACH1 and PCNA in renal cancer tissues (Figure 1F). In order to further investigate the relationship of DACH1 and PCNA at mRNA level, we examined Oncomine database. The mRNA profiles GSE14994 consisting of 70 patients with renal cancers showed that DACH1 and PCNA were inversely correlated (Figure 1G) ( $p < 0.002$ ). Therefore, we conclude that the lost expression of DACH1 led to higher cellular proliferation in renal cancer tissues.

### Reactivation of DACH1 expression by methylation inhibitor reduced renal cancer cellular proliferation

DACH1 mRNA was highly expressed in several adult tissues including kidney, heart, lung and brain, with the highest expression detected in adult kidney tissues [30]. Using the embryo kidney cell (HEK293) as positive control, we determined DACH1 abundance in two clear cell cancer lines ACHN and CAKI. Western blot showed that DACH1 was



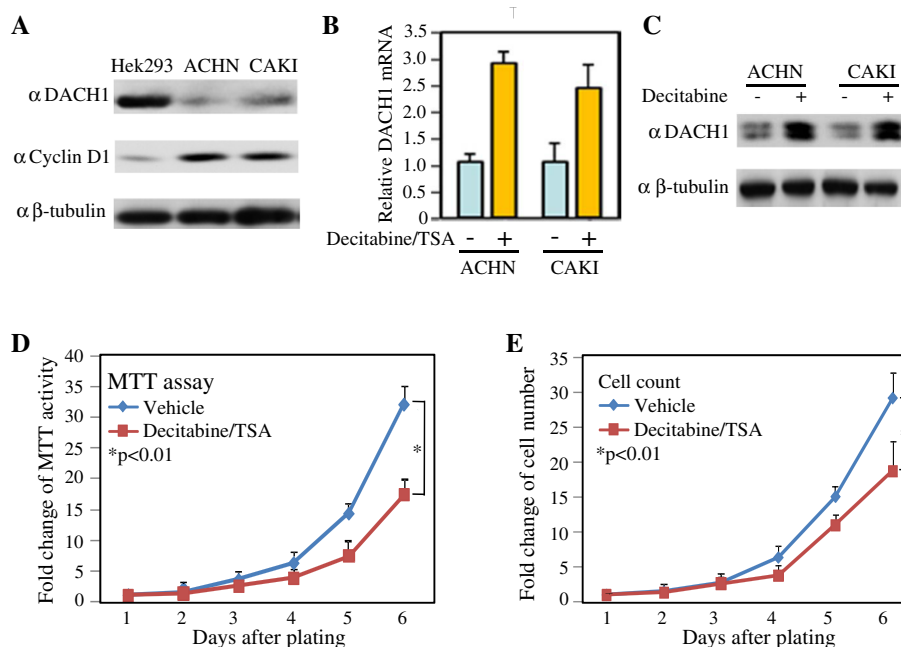
**Figure 1** DACH1 expression decreased in renal cell carcinoma and inversely correlated with PCNA. **A.** Representative expression of DACH1 in normal kidney tissues and renal clear cell carcinomas. Intensity of DACH1 protein in relation to tumor type (**B**) and tumor stage (**C**). **D.** The ratio of DACH1 positive cells with tumor grade. **E.** Ratio of PCNA positive cells with tumor grade. **F.** Relative protein abundance of DACH1 with PCNA. **G.** Reciprocal quantitative mRNA expression of DACH1 and PCNA in renal clear cell carcinoma tissues from Oncomine database GSE14994.

very weakly expressed in both cancer cell lines, in contrast DACH1 was abundantly expressed in HEK293 cells (Figure 2A). After sequentially treated with Decitabine in combination with Trichostatin A (TSA), DACH1 mRNA was induced about 3 folds increase (Figure 2B). Correspondingly, DACH1 protein was increased about 5 folds (Figure 2C). Cellular proliferation ability was evaluated in ACHN cells treated with Decitabine and TSA. Both MTT assay and cell counting demonstrated that combined treatment reduced the cancer growth rate (Figure 2D, E). Those results indicated that epigenetic silencing of endogenous DACH1 contributed to the enhanced growth of RCC cells.

#### Ectopic expression of DACH1 inhibited renal cancer cell in vitro proliferation and in vivo tumor growth

In order to directly define the function of DACH1, we established sublines through infecting ACHN and CAKI

cells with retrovirus expressing DACH1. Two weeks after antibiotic selection, more than 90% cells expressed Flag-tag DACH1 as shown by fluorescent staining (Figure 3A, B). Expression of DACH1 decreased the cell proliferation in both ACHN and CAKI cells (Figure 3C, D). Flow cytometry revealed that the decrease in S phase was corresponded to the increase in G1 (Figure 3E). However, there was no statistical difference in apoptotic cells with or without DACH1 expression (Figure 3F). The clone formation is a basic characteristic of transformed cells and represents the malignant potential and tumorigenicity. Engineering expression of wild type DACH1 inhibited the clone number in both ACHN and CAKI cells, in contrast, expressing a DACH1 with DS domain deleted mutant had no repressive function (Figure 4A, B, C). In order to further evaluate tumorigenicity *in vivo*, CAKI cells expressing DACH1 and the vector control were subcutaneously



**Figure 2 Epigenetic silencing of DACH1 enhanced cellular proliferation.** **A.** Western blot analysis of DACH1 and cyclin D in embryo kidney cells and clear cancer cells. **B.** Relative DACH1 mRNA expression normalized to GAPDH with or without treatment. **C.** Protein abundance with or without treatment.  $\beta$ -tubulin as loading control. Cellular proliferation analyzed by MTT assay (**D**) and cell counting (**E**).

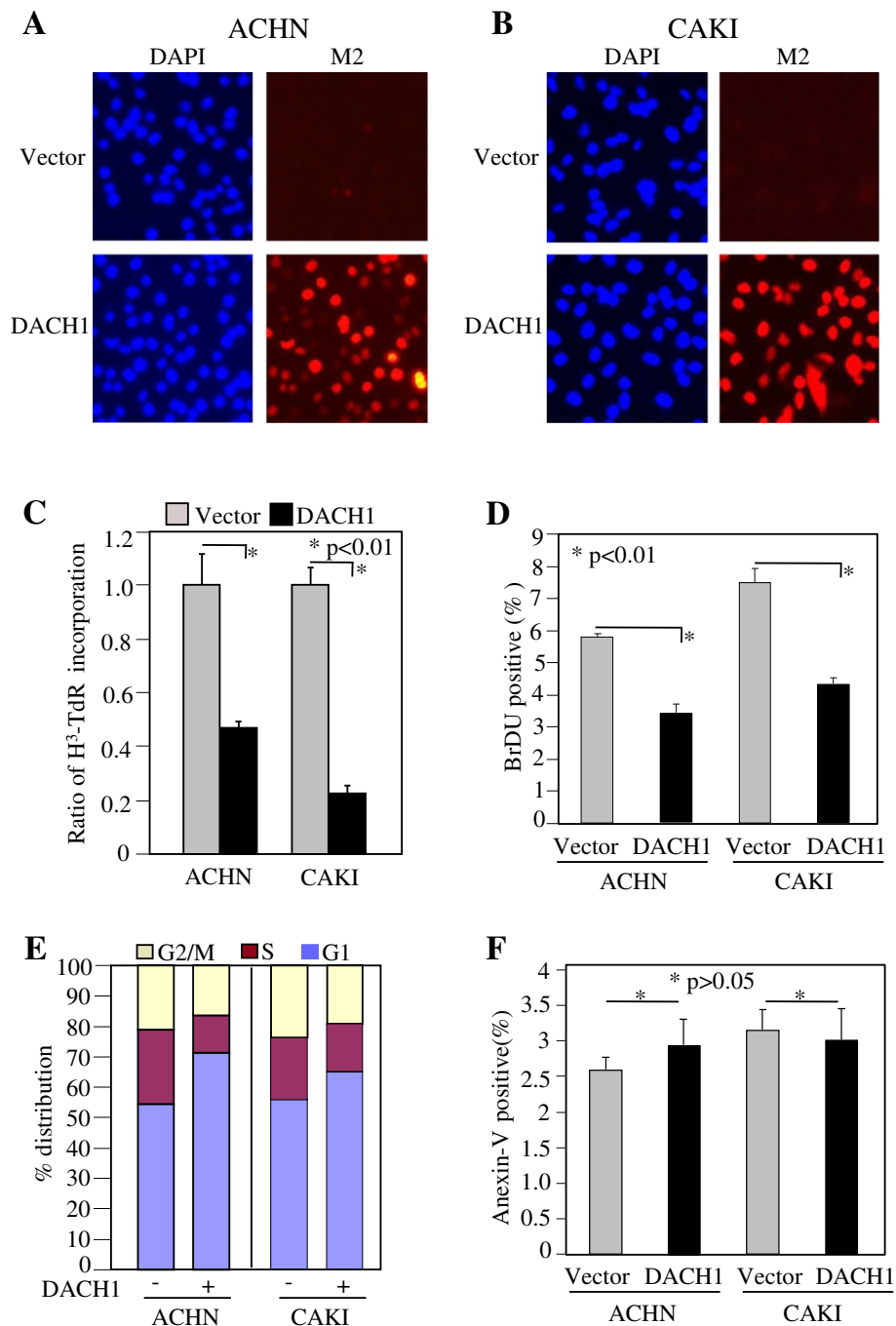
implanted to immunodeficient mice and the tumor growth was monitored twice a week. The growth curve revealed a dramatic decrease of tumor size in the CAKI group following DACH1 expression (Figure 4D). The average tumor weight decreased from 320 mg in the control group to 50 mg in the DACH1 group (Figure 4E, F). Moreover, gross observation indicated that cancer cells in vector group infiltrated into surrounding host tissues, while tumors in DACH1 group was not only smaller, but also clearly separated from surrounding host tissues.

#### DACH1 repressed cyclin D1 in vitro and in vivo

Previous studies proved that RDGN integrated with cell cycle regulatory machinery to modulate cellular proliferation and tumorigenicity in several types of cancers [15,24,33-35]. Specifically, Six1 and EYA1 upregulated cyclin D; In contrast, DACH1 acted as an antagonist of cyclin D1 in breast cancer. We searched in Oncomine database to find whether this reciprocal relation exists in renal cancer. Quantitative mRNA expression from 20 pairs of normal and cancerous tissues showed that higher DACH1 expression is accompanied with lower cyclin D1 expression in normal renal tissue. However, DACH1 was reduced more than 80% in cancerous tissues with up to 6 folds increase in cyclin D (Figure 5A). The reverse correlation was observed in each sample from two different databases (Figure 5B, C). To further explore their relationship in the protein level, human renal cancer

tissue microarrays were immunostained with antibodies for DACH1 and cyclin D1. Very few cells were positive for cyclin D1 in normal renal tissue, and cancer cells expressed cyclin D1 at different ratio (Figure 5D). The ratio of cyclin D1 positive cells statistically increased with the tumor grade (Figure 5E). Moreover, the higher expression of DACH1 usually accompanied with the lower expression of cyclin D1, with coefficient R value of  $-0.64$  ( $p < 0.01$ ) (Figure 5F).

The cyclin D1 and related cell cycle protein RB and CDK4 were measured in cultured renal cancer cell lines. Western blot results demonstrated that ectopic expression of wild type DACH1 dramatically repressed cyclin D1 and phosphorylated RB proteins, but it had no effect on CDK4 in both ACHN and CAKI cells (Figure 6A, B). RT-PCR demonstrated about 50% decrease of cyclin D1 mRNA in CAKI cells expressing DACH1 (Figure 6C). To measure the transcriptional regulation of cyclin D1, transient co-transfection assay was performed in ACHN and CAKI cells using DACH1 expressing vector and cyclin D1 promoter constructs linked with luciferase (Figure 6D). As a positive control, serum activated cyclin D1 promoter activity was increased about 5–6 folds; while DACH1 reduced cyclin D1 promoter activity to less than 50%. However, a DS domain with deleted mutants abrogated repressive function (Figure 6E, F). Immunoprecipitation with anti-flag antibody and western blot using a c-Jun antibody in the whole cell lysate demonstrated DACH1



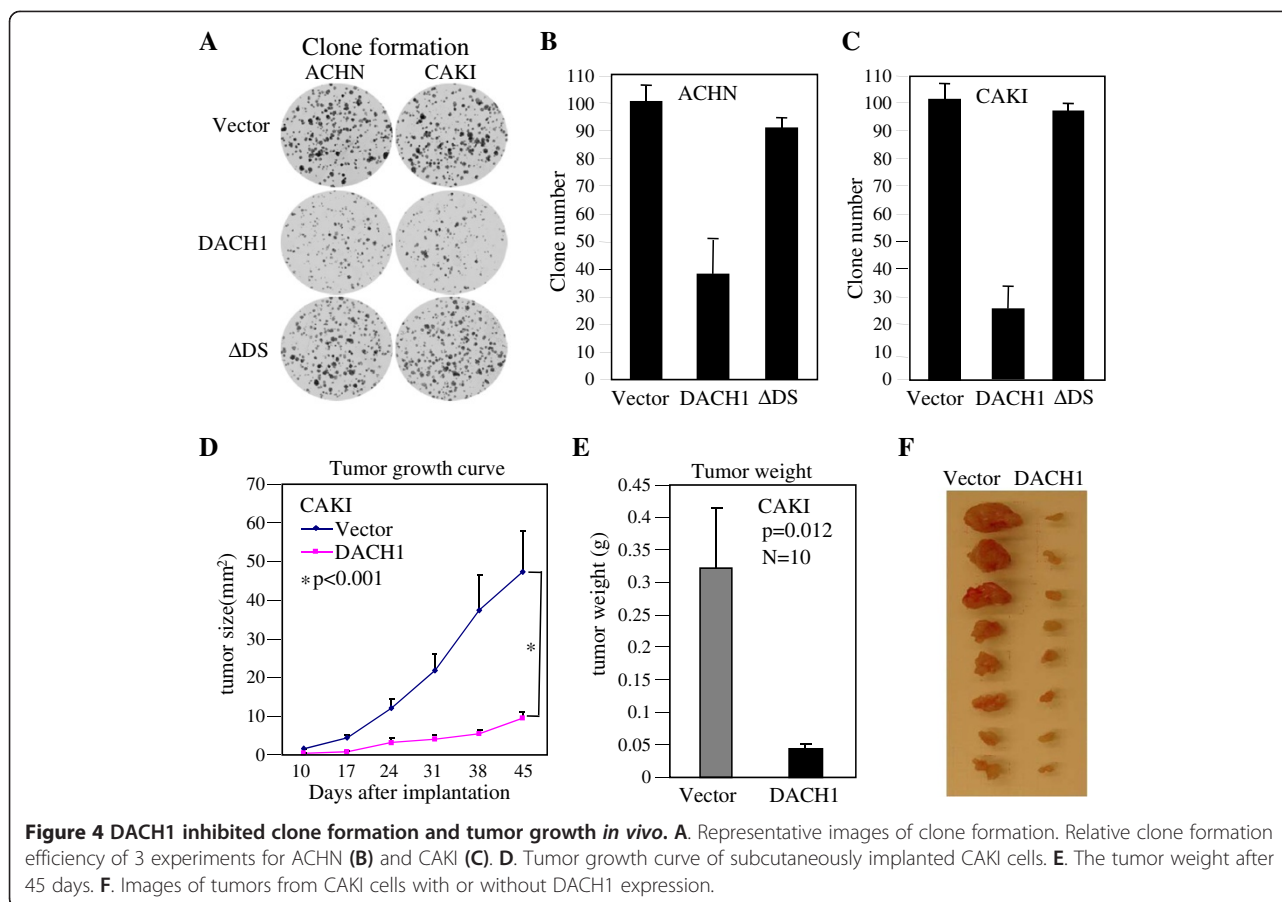
**Figure 3 Ectopic expression of DACH1 inhibited cellular proliferation.** Stable expression of Flag-tagged DACH1 in renal cancer cell lines ACHN (A) and CAKI (B). DNA synthesis evaluated by H<sup>3</sup>-TdR incorporation (C) and BrdU incorporation (D). Proliferation evaluated by S phase entry (E) and apoptosis evaluated by Annexin-V staining (F).

formed a complex with c-Jun in CAKI cells (Figure 6G). Chromatin immunoprecipitation with a flag antibody and PCR amplified human cyclin D1 promoter sequence supported a model that DACH1 was recruited into cyclin D1 promoter context at AP-1 site, as previously observed in human breast cancer (Figure 6H) [15].

## Discussion

The current studies intended to demonstrate DACH1 protein expression was significantly reduced in RCC tissues in comparison to normal kidney tissues. Moreover, the DACH1 protein level inversely correlated with tumor grade and TNM stage. This was in agreement





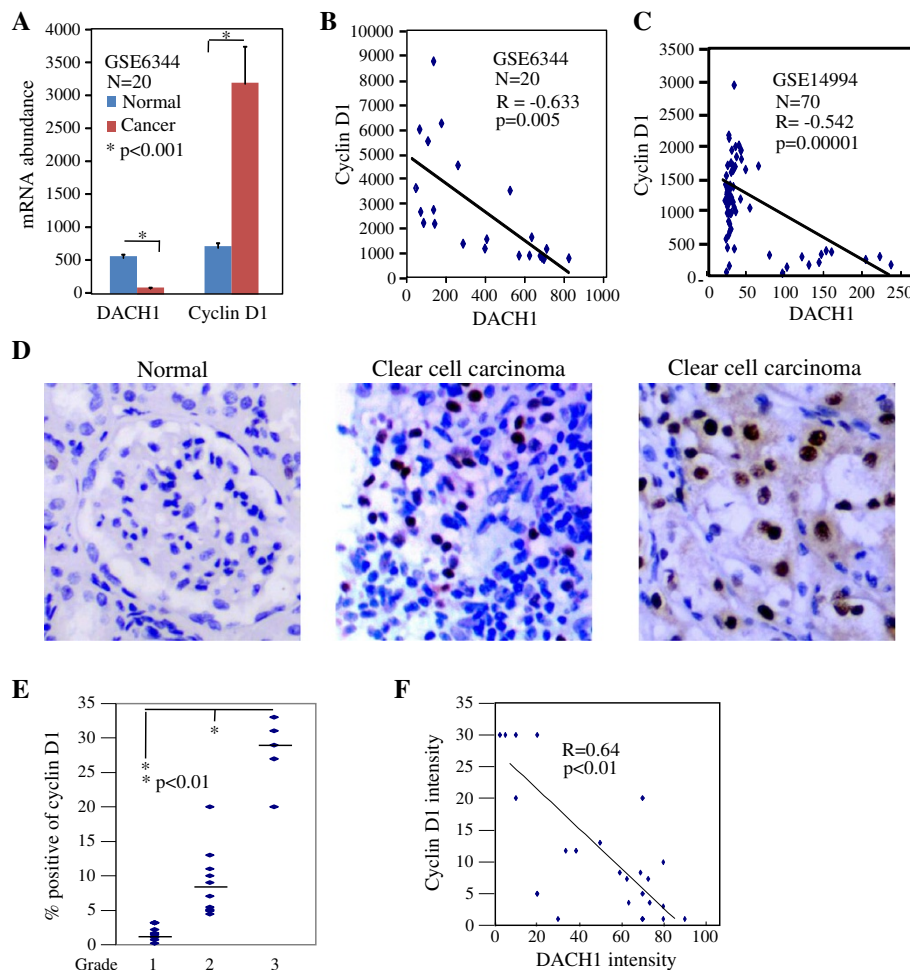
**Figure 4** DACH1 inhibited clone formation and tumor growth *in vivo*. **A**. Representative images of clone formation. Relative clone formation efficiency of 3 experiments for ACHN (**B**) and CAKI (**C**). **D**. Tumor growth curve of subcutaneously implanted CAKI cells. **E**. The tumor weight after 45 days. **F**. Images of tumors from CAKI cells with or without DACH1 expression.

with previous findings that DACH1 mRNA in RCC tissues was 80% less than the matched normal kidney tissues due to the hypermethylation of DACH1 promoter region [9]. This finding was also in accordance with most observations in solid tumors and further supported the concept that DACH1 represented a novel tumor suppressor [15,16,19-21]. Functional inactivation of tumor suppressors by promoter methylation is a common mechanism of tumorigenesis. Histone deacetylase inhibitors (HDACI) had great anti-cancer effect in a wide range of cancers in preclinic studies and exhibited promising responses in patients with various cancer types [36]. In this respect, CDF, a new synthetic analogue of curcumin, had been demonstrated as a novel demethylating agent for restoring the expression of hyper-methylated gene and caused a marked inhibition of cellular growth [37]. We showed that decitabine treatment induced the expression of DACH1 and inhibited cellular proliferation. However, whether DACH1 is the key target of decitabine for *in vivo* tumor growth needs to be further evaluated. In contrary to epigenetic changes and mRNA expression, previous studies failed to reveal the decreased protein abundance of DACH1 in cancer tissues [9]. DACH1 has 3 isoforms and its isoform expressions showed a tissue-specific

pattern [23]. Both antibody specification and isoform expression may account to this discrepancy.

Previously, we showed that DACH1 was lost in triple negative breast cancers associated with stem cell property, and high expression of DACH1 predicted a 40-month survival advantage in all types of breast cancer [15]. Recently, Dr. Powe's study demonstrated that high expression of DACH predicted a better survival in luminal breast cancers [29], further supporting our previous report. However, the prognostic value of DACH1 in RCC remains to be elucidated.

Our studies demonstrated that the expression of DACH1 inversely correlated with cyclin D1 and PCNA, the surrogated markers of proliferation. It suggested that the loss of DACH1 led to a growth advantage of tumor cells. The sequential epigenetic treatment with epigenetic modification agents decitabine/TSA induced DACH1 expression accompanied with decreased proliferation, providing a laboratory evidence to support the concept that inactivation of DACH1 contributed to tumor growth. Indeed, the engineering expression of DACH1 inhibited cell growth via the reduced DNA synthesis, not the altered apoptosis, depending on the DS domain. Our results were in agreement with previous findings in other cell lines that

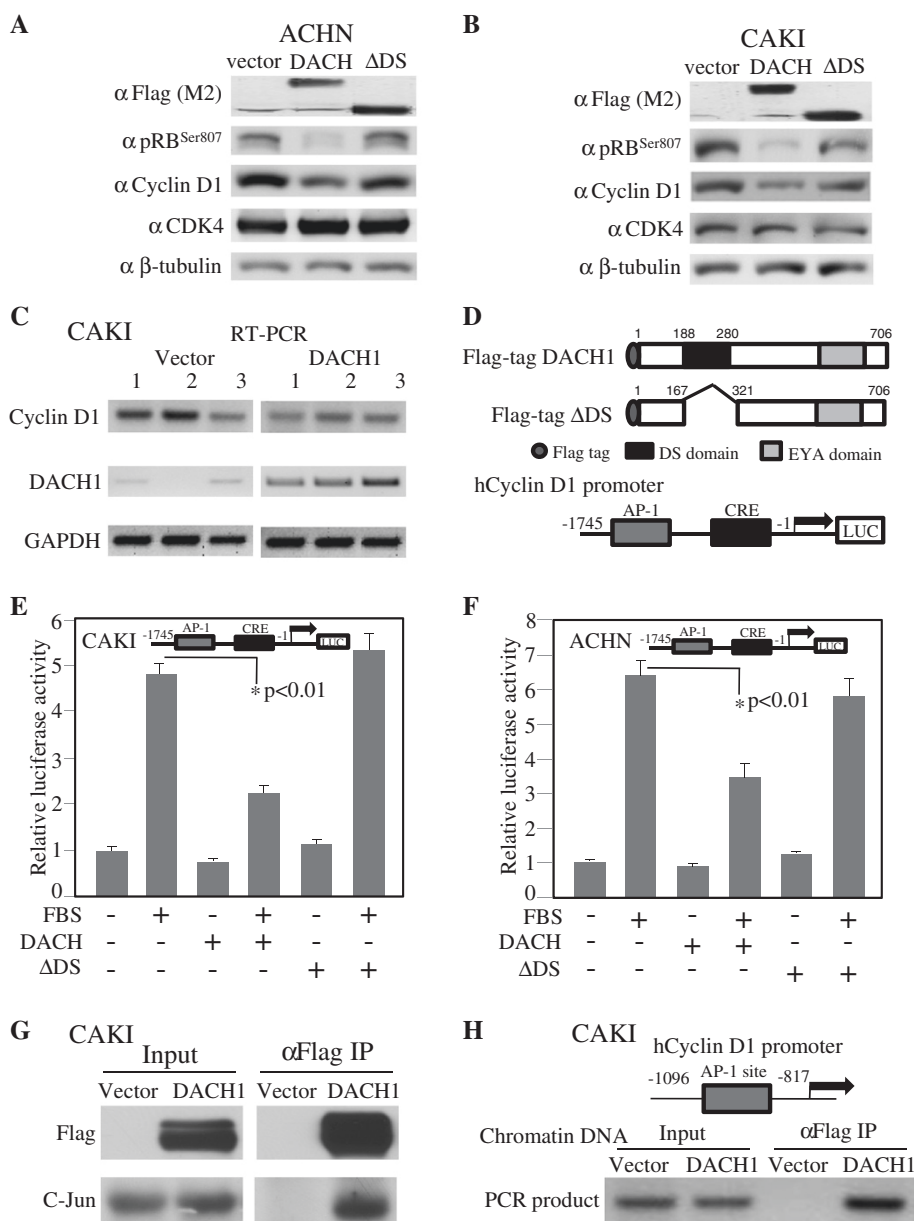


**Figure 5 DACH1 inversely correlated with cyclin D1 in renal cancer tissues.** **A.** Quantitative mRNA expression of DACH1 and cyclin D1 in normal renal tissues and renal carcinomas. Reciprocal expression of DACH1 and cyclin D1 from Oncomine database GSE6344 (**B**) and GSE14994 (**C**). **D.** Representative image of cyclin D1 in normal renal tissues and clear cell carcinoma tissues. **E.** Cyclin D1 expression with tumor grade. **F.** Reciprocal protein abundance of DACH1 and cyclin D1.

the inhibition of cellular proliferation by DACH1 required the key DS domain. The DS domain has been proved to be required for a series of important functions, including the regulation of cancer stem cell expansion [38], AR [16], IL-8 secretion and breast cancer cell invasion [17]. Transcriptional repression of AP-1 family members c-jun and c-fos by DACH1 also required the conserved N-terminal DS domain. The deletion of DS domain abolished the repression of Cyclin D1 in breast cancer and the overexpression of DS domain alone substituted DACH1 to repress S phase entry in breast cancer cells [15]. At the molecular level, the DS domain alone can be recruited to the cyclin D1 promoter AP site. In association with AP-1 and smads complex, DS domain possessed DNA binding property [18]. DACH1 antagonized FOXM1 signaling through competitively binding to the conserved forehead specific DNA sequence [18]. Together, those experiments demonstrated that DACH1 DS domain

and its associated proteins play key role in the DACH1-mediated function. Molecules or reagents targeting to this portion of DACH1 may have potential therapeutical applications.

The *cyclin D1* gene encoded the regulatory subunit of a holoenzyme that phosphorylated and inactivated the pRb protein, thereby promoting the DNA synthesis and the S phase entry. Aberrations in the G1/S transition of cell cycle were observed in many cancers. pVHL downregulated cyclinD1 through HIF-independent mechanisms [39], therefore, conventional RCC often expressed high cyclin D1 protein level [40]. Cyclin D1 was a key downstream target of mTOR. In RCC cell line CAKI and ACHN, dual inhibition of src kinase and receptor tyrosine kinase resulted in synergistic inhibition of proliferation and migration, accompanied with suppression of cyclin D1 [41]. Moreover, tyrosine kinase inhibitor, sorafenib, inhibited angiogenic downstream signaling p-AKT, p-ERK



**Figure 6 DACH1 in association with c-Jun to repress cyclin D1 transcription.** Western blot analysis of ACHN (A) and CAKI (B) cells expressing DACH1 wt, DS or vector control. C. RT-PCR detected cyclin D1 and DACH1 mRNA abundance. D. Schematic structure of DACH1 and cyclin D1 promoter. E. Luciferase activity of cyclin D1 promoter in renal cancer cell line CAKI (E) and ACHN (F). G. Immunoprecipitation and western blot of CAKI cells. H. ChIP of cyclin D1 promoter AP-1 site in CAKI cells.

and cyclin D1 [42]. Metformin inhibited the proliferation and tumor growth of RCC cell lines 786-O and OS-RC-2, also with down-regulating of cyclin D1 expression and cell cycle arrest [43]. Experimentally, exposure of human renal cells to recombinant erythropoietin induced cellular proliferation through stimulating the expression of cyclin D1 while inhibiting the expression of p21<sup>kip1</sup> and p27<sup>kip1</sup> [44]. Approximately 75% of the RCC tumors expressed higher level of cyclin D1 than the normal kidney context. Surprisingly, previous studies did not

find cyclin D1 expression correlated with proliferation, as determined by Ki-67 or s-phase analysis [45].

The abundance of cyclin D1 was regulated through distinct mechanisms, including post translational modification by phosphorylation and the induction of mRNA and/or gene transcription. Our data indicated DACH1 repressed cyclin D1 transcription, as determined by RT-PCR and promoter activity assays. Recent studies revealed multiple novel functions of cyclin D1, including cancer stem cell self-renewal [46], VEGF-stimulated vascularization [47]



and chromosomal instability [48]. Considering cyclin D1 as the common downstream target of multiple signaling in RCC target therapy, the current studies raised the possibility that expression level of DACH1 may determine targeting therapeutic sensitivity either directly or indirectly, therefore, affect the long term survival.

p53 is a powerful tumor suppressor and small molecules that activated p53 had shown promising anti-tumor effects in hematological malignancies [49]. Recent findings that DACH1 associated with and enhanced p53 function to induced apoptosis provided an alternative mechanism for DACH1 to inhibit tumorigenesis [21]. However, as a new tumor suppressor, detailed targets of DACH1 and its crosslinks with other oncogene/tumor suppressors remain to be further clarified.

### Materials and methods

The study protocol was approved by the ethics committee of Tongji Medical College of Huazhong University of Science and Technology.

#### Cell culture

Human renal clear cell carcinoma cell lines CAKI-1 were cultured in McCoy's 5A medium with 10% fetal bovine serum. ACHN cells were cultured in EMEM supplemented with 2 mM L-glutamine, 1% non-essential amino acids, 1 mM sodium pyruvate, and 10% fetal bovine serum. Human embryonic kidney 293 cells (HEK293) were maintained in DMEM containing 1% penicillin/streptomycin and supplemented with 10% FBS.

#### Plasmid construction, stable cells, reporter genes, DNA transfection and luciferase assay

Expression plasmids for DACH1 and DACH1 DS domain deleted mutation ( $\Delta$ DS) in pKW10 vector were a gift from Dr. Cvekl [50]. After digestion with ClaI/EcoRV, the insert was subcloned into a retrovirus expression vector. Stable sublines expressing DACH1,  $\Delta$ DS and empty vector control were established by transient co-transfection of DACH1-expressing vector with package plasmids in HEK293T cells. At 36 h and 48 h after transfection, the culture medium was collected and filtered through a 0.45  $\mu$ m filter for infecting renal cancer cells in the presence of 8 mg/ml polybrene. The pool of transduced cancer cells was further selected by treatment with Blastcidin at 5ug/ml for 2 weeks. Human cyclin D1 promoter constructs were a gift from Dr. Pestell [15]. Plasmid DNA transfection and luciferase assays were performed as previously described [15].

#### RNA isolation, RT-PCR and quantitative real-time PCR

Total RNA was isolated from CAKI cells stably expressing DACH1 and vector control using the TRIzol reagent (Invitrogen) following the manufacturer's instructions.

Five micrograms of total RNA was subjected to DNase treatment and purification following RNA miniprep kit (Qiagen). cDNA was synthesized using the SuperScript II Reverse Transcriptase Kit (Invitrogen). RT-PCR primers for cyclin D1 were: 5'-GTGCTGCGAAGTGAAACC -3' and 5'- ATCCAGGTGGCGACGATCT-3' [33]; primers for DACH1 were: 5'-CCA TGA GCA ACT ATC ATG CC-3'and 5'-TGT CCA TGC CCA GTT AGA GA-3' [16]. Internal control primers for GAPDH were 5'-ATCTTCCAGGAGCGAGACCCC-3' and 5'- TCCAC AATGCCAAAGTTGTCATGG-3'.

#### Immunohistochemistry and immunofluorescence

Human kidney cancer tissue arrays were purchased from Alenabio (Xi'an, China), including 13 cases of normal renal tissues, 5 cases of cancer adjacent normal renal tissue, 55 cases of clear cell carcinoma tissue, 31 cases of granular cell carcinoma tissue, and 19 cases of transitional cell carcinoma tissue. Tumor tissues were sub-grouped as grade I, well-differentiated; grade II, moderately differentiated; and grade III, poorly or undifferentiated. TNM status was as follows: 66 cases of T1N0M0, 33 cases of T2N0M0, 9 cases of T3N0M0 and 2 cases of T4N0M0. Tissue immunohistochemical stains were performed by core facility using a streptavidin-biotin technique and semi-quantated as described [51]. The antibodies were polyclonal antibody to DACH1(Proteintech, 10914-1), to PCNA (Santa Cruz, sc-7907) and monoclonal antibody to Cyclin D1 (Santa Cruz, sc-20044). The immune stain intensity and ratio of positive cells were analyzed. Immunofluorescence staining for DACH1 was modified from published method [52]. Cells were fixed in 4% formaldehyde for 10 minutes, permeable by 1% Triton X-100 for 5 minutes then blocked in 5% goat serum for 1 hour. Primary anti-Flag antibody (M2, Sigma, F3165) was used at 1:200 dilution, the goat anti-mouse secondary antibody (Alexa Fluor-568) was used at 1:500. Cell nuclei were count-stained with 4,6-diamidino-2-phenylindole(DAPI).

#### Western blot, immunoprecipitation and chromatin-immunoprecipitation study

Cultured cells at 90% confluence were pelleted and lysed in RIPA Buffer (150 M NaCl, 20 mM Tris-HCl, 1 mM EDTA, 1 mM EGTA, 1 mM Na<sub>3</sub>VO<sub>3</sub>, 2.5 mM sodium pyrophosphate, 1 mM  $\beta$ -glycerophosphate, 1% Triton x-100), supplemented with protease inhibitors. Protein was separated by a 10% SDS PAGE and antibodies used in Western blot included cyclin D1 (sc-20044), CDK4 (sc-601), c-Jun (sc-1694), pRB<sup>ser807</sup> (Sigma, R3903), and  $\beta$ -actin (sc-47778) as an internal loading control. Immunoprecipitation for protein complex of DACH1 and c-Jun and in renal cancer cells was performed as previously described [15]. Chromatin immunoprecipitation (ChIP) was performed using published method [24]. The

human cyclin D1 promoter-specific primers used were as follows: AP-1 site: 5'-GGCAGAGGGGACTAA TATTC CAGCA-3' and 5'-GAATGGAAAGCTGAGAAACAGT GATCTCC-3'. Immunoprecipitation with IgG was used as negative control.

#### Cell proliferation and apoptosis assay

Cells expressing DACH1,  $\Delta$ DS and vector control were seeded into 96-well plates in normal growth medium, and cell growth was measured by daily 3-(4,5-dimethylthiazol-2-yl)-2,5-diphenyltetrazolium (MTT) assay as previously described [53]. For measuring the growth curve, cells were seeded into 12-well plates and serially counted for 6 to 7 days. DNA synthesis was analyzed by  $^3\text{H}$ -TdR incorporation. Briefly,  $1 \times 10^5$  cells were plated into 24-well plate and cultured for 36 hours.  $^3\text{H}$ -TdR (1  $\mu\text{Ci}/\text{well}$ ) was added to each well and the culture was continued for another 2 hours. Cells were washed twice with cold PBS and proteins were precipitated by incubation with 10% trichloroacetic acid for 30 minutes at room temperature (100  $\mu\text{L}/\text{well}$ ). After additional washes, cells were treated with 0.2 N NaOH and collected in scintillation vials. For 5-Bromo-29-Deoxyuridine (BrdU) staining, cells were labeled with 100  $\mu\text{M}$  BrdU for 1 hour in regular culture medium, washed 3 times with PBS, fixed in 3.7% formaldehyde/PBS for 10 minutes, treated with 4 N HCl/1% Triton-X100 for 10 minutes, and finally washed 3 times with 0.1% NP-40/PBS. The cell suspension was incubated with mouse anti-BrdU (Sigma, B8434) at 1:1000 for 2 hours at room temperature and stained with goat anti-mouse antibody (AlexaFluor 568) at 1:1000 after washing. 10,000 cells were analyzed using a flow cytometer (BD Biosciences). Apoptotic cells were measured using a BD Pharmingen AnnexinV-PE Apoptosis Kit following the standard protocol.

#### Cell cycle

Cultured cells were processed by standard methods using propidium iodide staining of cellular DNA. Samples were conducted on a FACScan flow cytometer (BD Biosciences) equipped with a 488-nm laser. Histograms were analyzed for cell cycle compartments using ModFit version 2.0 (Verity Software House, Topsham, ME). A minimum of 20,000 events for each sample were collected for statistical analysis.

#### Colony formation assay

For contact-dependent growth,  $4 \times 10^3$  renal cancer cells were plated in triplicate into 6 cm dish and medium was changed every 3 days. The colonies after 2-week growth were visualized by staining with 0.04% crystal violet in methanol for 1 hour [16].

#### Tumor implantation study

A total of  $2 \times 10^5$  CAKI cells expressing either vector control or DACH1 were implanted subcutaneously to 6-week old ethymic male nude mice. The tumor growth was measured weekly for 4 to 5 weeks using a digital caliper. Tumor mass was weighted after mice were sacrificed. The study protocol was approved by the ethics committee of Tongji Medical College of Huazhong University of Science and Technology.

#### Statistical analysis

All data were expressed as the mean  $\pm$  standard error. Statistical analysis between groups was calculated by student's t-test. P value  $<0.05$  was considered statistically significant.

#### Conclusions

Expression of DACH1 was significantly decreased in human renal carcinoma tissue and was inversely correlated with proliferation, tumor grade, and TNM stage. Restoration of DACH1 function in renal clear cell cancer cells inhibited *in vitro* cellular proliferation and *in vivo* tumor growth. The repression of cyclin D1 transcription was a key target of DACH1 in regulating cancer cell proliferation. Our results indicated that DACH1 attributed to the malignant behavior of renal cancer cells. Re-activation of DACH1 may represent a potential therapeutic strategy.

#### Competing interests

The authors declare that they have no competing interests.

#### Authors' contributions

KW, MG and QC designed the study; GC, NH, XY, XN, HW and YC performed the study; KW and QC wrote the manuscript. All authors approved the final manuscript.

#### Acknowledgements

This work was supported by China NSFC No. 81072169, 81172422, 81261120395 and 81301929, National Basic Research Program No. 2010CB912802 and 2012CB934002, National Key Scientific Instrument Special Program of China No. 2013YQ030923, and The Natural Science Foundation of Hubei Province No. 2014CFB218. We thank Dr. Pestell for providing Cyclin D1 promoter constructs and Dr. Cvekl for providing DACH1 expression plasmids.

#### Author details

<sup>1</sup>Department of Oncology, Tongji Hospital, Tongji Medical College of Huazhong University of Science and Technology, 1095 Jiefang Avenue, Wuhan, Hubei 430030, China. <sup>2</sup>Department of Gastroenterology & Hepatology, Chinese PLA General Hospital, #28 Fuxing Road, Beijing 100853, China.

Received: 24 July 2014 Accepted: 22 September 2014

Published online: 17 October 2014

#### References

1. De P, Otterstatter MC, Semenciw R, Ellison LF, Marrett LD: Dryer D Trends in incidence, mortality, and survival for kidney cancer in Canada, 1986–2007. *Cancer Causes Control* 2014, [Epub ahead of print].
2. Santoni M, De Tursi M, Felici A, Lo Re G, Ricotta R, Ruggeri EM, Sabbatini R, Santini D, Vaccaro V, Milella M: Management of metastatic renal cell carcinoma patients with poor-risk features: current status and future perspectives. *Expert Rev Anticancer Ther* 2013, **13**(6):697–709.

3. Hudes G, Carducci M, Tomczak P, Dutcher J, Figlin R, Kapoor A, Staroslawska E, Sosman J, McDermott D, Bodrogi I, Kovacevic Z, Lesovoy V, Schmidt-Wolf IG, Barbarash O, Gokmen E, O'Toole T, Lustgarten S, Moore L, Motzer RJ: **Global ARCC Trial. temsirolimus, interferon alfa, or both for advanced renal-cell carcinoma.** *N Engl J Med* 2007, **356**(22):2271–2281.
4. Motzer RJ, Molina AM: **Targeting renal cell carcinoma.** *J Clin Oncol* 2009, **27**(20):3274–3276.
5. Iacovelli R, Alesini D, Palazzo A, Trenta P, Santoni M, De Marchis L, Cascinu S, Naso G, Cortesi E: **Targeted therapies and complete responses in first line treatment of metastatic renal cell carcinoma. a meta-analysis of published trials.** *Cancer Treat Rev* 2014, **40**(2):271–275.
6. Finley DS, Pantuck AJ, Belldegrin AS: **Tumor biology and prognostic factors in renal cell carcinoma.** *Oncologist* 2011, **16**(Suppl 2):4–13.
7. Koul H, Huh JS, Rove KO, Crompton L, Koul S, Meacham RB, Kim FJ: **Molecular aspects of renal cell carcinoma: a review.** *Am J Cancer Res* 2011, **1**(2):240–254.
8. Hu C, Mohtat D, Yu Y, Ko YA, Shenoy N, Bhattacharya S, Izquierdo MC, Park AS, Giricz O, Vallumsetla N, Gundabolu K, Ware K, Bhagat T, Suzuki M, Pullman J, Liu SX, Greally J, Suszkat K, Verma A: **Kidney cancer is characterized by aberrant methylation of tissue specific enhancers that are prognostic for overall survival.** *Clin Cancer Res* 2014, **20**(16):4349–4360.
9. Dalgin GS, Drever M, Williams T, King T, DeLisi C, Liou LS: **Identification of novel epigenetic markers for clear cell renal cell carcinoma.** *J Urol* 2008, **180**(3):1126–1130.
10. Atkins M, Jiang Y, Sansores-Garcia L, Jusiak B, Halder G, Mardon G: **Dynamic rewiring of the Drosophila retinal determination network switches its function from selector to differentiation.** *PLoS Genet* 2013, **9**(8):e1003731.
11. Li X, Oghi KA, Zhang J, Kronen A, Bush KT, Glass CK, Nigam SK, Aggarwal AK, Maas R, Rose DW, Rosenfeld MG: **Eya protein phosphatase activity regulates Six1-Dach-Eya transcriptional effects in mammalian organogenesis.** *Nature* 2003, **426**(6964):247–254.
12. Popov VM, Wu K, Zhou J, Powell MJ, Mardon G, Wang C, Pestell RG: **The Dachshund gene in development and hormone-responsive tumorigenesis.** *Trends Endocrinol Metab* 2010, **21**(1):41–49.
13. Wu W, Ren Z, Li P, Yu D, Chen J, Huang R, Liu H: **Six1: A critical transcription factor in tumorigenesis.** *Int J Cancer* 2014, doi: 10.1002/ijc.28755. [Epub ahead of print].
14. Tadjuidje E, Hegde RS: **The Eyes Absent proteins in development and disease.** *Cell Mol Life Sci* 2013, **70**(11):1897–1913.
15. Wu K, Li A, Rao M, Liu M, Dailey V, Yang Y, Di Vizio D, Wang C, Lisanti MP, Sauter G, Russell RG, Cvekl A, Pestell RG: **DACH1 is a cell fate determination factor that inhibits cyclin D1 and breast tumor growth.** *Mol Cell Biol* 2006, **26**(19):7116–7129.
16. Wu K, Katiyar S, Witkiewicz A, Li A, McCue P, Song LN, Tian L, Jin M, Pestell RG: **The cell fate determination factor dachshund inhibits androgen receptor signaling and prostate cancer cellular growth.** *Cancer Res* 2009, **69**(8):3347–3355.
17. Wu K, Katiyar S, Li A, Liu M, Ju X, Popov VM, Jiao X, Lisanti MP, Casola A, Pestell RG: **Dachshund inhibits oncogene-induced breast cancer cellular migration and invasion through suppression of interleukin-8.** *Proc Natl Acad Sci U S A* 2008, **105**(19):6924–6929.
18. Zhou J, Wang C, Wang Z, Dampier W, Wu K, Casimiro MC, Chepelev I, Popov VM, Quong A, Tozeren A, Zhao K, Lisanti MP, Pestell RG: **Attenuation of Forkhead signaling by the retinal determination factor DACH1.** *Proc Natl Acad Sci U S A* 2010, **107**(15):6864–6869.
19. Watanabe A, Ogiwara H, Ehata S, Mukasa A, Ishikawa S, Maeda D, Ueki K, Ino Y, Todo T, Yamada Y, Fukayama M, Saito N, Miyazono K, Aburatani H: **Homozygously deleted gene DACH1 regulates tumor-initiating activity of glioma cells.** *Proc Natl Acad Sci U S A* 2011, **108**(30):12384–12389.
20. Zhu H, Wu K, Yan W, Hu L, Yuan J, Dong Y, Li Y, Jing K, Yang Y, Guo M: **Epigenetic silencing of DACH1 induces loss of transforming growth factor-β1 antiproliferative response in human hepatocellular carcinoma.** *Hepatology* 2013, **58**(6):2012–2022.
21. Chen K, Wu K, Cai S, Zhang W, Zhou J, Wang J, Ertel A, Li Z, Rui H, Quong A, Lisanti MP, Tozeren A, Tanes C, Addya S, Gormley M, Wang C, McMahon SB, Pestell RG: **Dachshund binds p53 to block the growth of lung adenocarcinoma cells.** *Cancer Res* 2013, **73**(11):3262–3274.
22. Yan W, Wu K, Herman JG, Brock MV, Zhou Y, Lu Y, Zhang Z, Yang Y, Guo M: **Epigenetic silencing of DACH1 induces the invasion and metastasis of gastric cancer by activating TGF-β signalling.** *J Cell Mol Med* 2014, doi: 10.1111/jcmm.12325. [Epub ahead of print].
23. Wu K, Chen K, Wang C, Jiao X, Wang L, Zhou J, Wang J, Li Z, Addya S, Sorensen PH, Lisanti MP, Quong A, Ertel A, Pestell RG: **Cell fate factor DACH1 represses YB-1-mediated oncogenic transcription and translation.** *Cancer Res* 2014, **74**(3):829–839.
24. Wu K, Li Z, Cai S, Tian L, Chen K, Wang J, Hu J, Sun Y, Li X, Ertel A, Pestell RG: **EYA1 phosphatase function is essential to drive breast cancer cell proliferation through cyclin D1.** *Cancer Res* 2013, **73**(14):4488–4499.
25. Micalizzi DS, Christensen KL, Jedlicka P, Coletta RD, Barón AE, Harrell JC, Horwitz KB, Billheimer D, Heichman KA, Welm AL, Schiemann WP, Ford HL: **The Six1 homeoprotein induces human mammary carcinoma cells to undergo epithelial-mesenchymal transition and metastasis in mice through increasing TGF-β signaling.** *J Clin Invest* 2009, **119**(9):2678–2690.
26. Iwanaga R, Wang CA, Micalizzi DS, Harrell JC, Jedlicka P, Sartorius CA, Kabos P, Farabaugh SM, Bradford AP, Ford HL: **Expression of Six1 in luminal breast cancers predicts poor prognosis and promotes increases in tumor initiating cells by activation of extracellular signal-regulated kinase and transforming growth factor-β signaling pathways.** *Breast Cancer Res* 2012, **14**(4):R100.
27. McCoy EL, Iwanaga R, Jedlicka P, Abbey NS, Chodosh LA, Heichman KA, Welm AL, Ford HL: **Six1 expands the mouse mammary epithelial stem/progenitor cell pool and induces mammary tumors that undergo epithelial-mesenchymal transition.** *J Clin Invest* 2009, **119**(9):2663–2677.
28. Farabaugh SM, Micalizzi DS, Jedlicka P, Zhao R, Ford HL: **Eya2 is required to mediate the pro-metastatic functions of Six1 via the induction of TGF-β signaling, epithelial-mesenchymal transition, and cancer stem cell properties.** *Oncogene* 2012, **31**(5):552–562.
29. Powe DG, Dhondalay GK, Lemetre C, Allen T, Habashy HO, Ellis IO, Rees R, Ball GR: **DACH1: its role as a classifier of long term good prognosis in luminal breast cancer.** *PLoS One* 2014, **9**(1):e84428.
30. Kozmik Z, Pfeffer P, Kralova J, Paces J, Paces V, Kalousova A, Cvekl A: **Molecular cloning and expression of the human and mouse homologues of the Drosophila dachshund gene.** *Dev Genes Evol* 1999, **209**(9):537–545.
31. Yan W, Wu K, Herman JG, Brock MV, Fuks F, Yang L, Zhu H, Li Y, Yang Y, Guo M: **Epigenetic regulation of DACH1, a novel Wnt signaling component in colorectal cancer.** *Epigenetics* 2013, **8**(12):1373–1383.
32. Wu L, Herman JG, Brock MV, Wu K, Mao G, Yan W, Nie Y, Liang H, Zhan Q, Li W, Guo M: **Silencing DACH1 promotes esophageal cancer growth by inhibiting TGF-β signaling.** *PLoS One* 2014, **9**(4):e95509.
33. Wu K, Liu M, Li A, Donninger H, Rao M, Jiao X, Lisanti MP, Cvekl A, Birrer M, Pestell RG: **Cell fate determination factor DACH1 inhibits c-Jun-induced contact-independent growth.** *Mol Biol Cell* 2007, **18**(3):755–767.
34. Coletta RD, Christensen K, Reichenberger KJ, Lamb J, Micomonaco D, Huang L, Wolf DM, Müller-Tidow C, Golub TR, Kawakami K, Ford HL: **The Six1 homeoprotein stimulates tumorigenesis by reactivation of cyclin A1.** *Proc Natl Acad Sci U S A* 2004, **101**(17):6478–6483.
35. Yu Y, Davicioni E, Triche TJ, Merlino G: **The homeoprotein six1 transcriptionally activates multiple putromitogenic genes but requires ezrin to promote metastasis.** *Cancer Res* 2006, **66**(4):1982–1989.
36. Tan J, Cang S, Ma Y, Petrillo RL, Liu D: **Novel histone deacetylase inhibitors in clinical trials as anti-cancer agents.** *J Hematol Oncol* 2010, **3**:5.
37. Roy S, Levi E, Majumdar AP, Sarkar FH: **Expression of miR-34 is lost in colon cancer which can be re-expressed by a novel agent CDF.** *J Hematol Oncol* 2012, **5**:58.
38. Wu K, Jiao X, Li Z, Katiyar S, Casimiro MC, Yang W, Zhang Q, Willmarth NE, Chepelev I, Crosariol M, Wei Z, Hu J, Zhao K, Pestell RG: **Cell fate determination factor Dachshund reprograms breast cancer stem cell function.** *J Biol Chem* 2011, **286**(3):2132–2142.
39. Zatyka M, da Silva NF, Clifford SC, Morris MR, Wiesener MS, Eckardt KU, Houlston RS, Richards FM, Latif F, Maher ER: **Identification of cyclin D1 and other novel targets for the von Hippel-Lindau tumor suppressor gene by expression array analysis and investigation of cyclin D1 genotype as a modifier in von Hippel-Lindau disease.** *Cancer Res* 2002, **62**(13):3803–3811.
40. Hedberg Y, Ljungberg B, Roos G, Landberg G: **Expression of cyclin D1, D3, E, and p27 in human renal cell carcinoma analysed by tissue microarray.** *Br J Cancer* 2003, **88**(9):1417–1423.
41. Bai L, Yang JC, Ok JH, Mack PC, Kung HJ, Evans CP: **Simultaneous targeting of Src kinase and receptor tyrosine kinase results in synergistic inhibition of renal cell carcinoma proliferation and migration.** *Int J Cancer* 2012, **130**(11):2693–2702.

42. Yuen JS, Sim MY, Siml HG, Chong TW, Lau WK, Cheng CW, Huynh H: **Inhibition of angiogenic and non-angiogenic targets by sorafenib in renal cell carcinoma (RCC) in a RCC xenograft model.** *Br J Cancer* 2011, **104**(6):941–947.
43. Liu J, Li M, Song B, Jia C, Zhang L, Bai X, Hu W: **Metformin inhibits renal cell carcinoma in vitro and in vivo xenograft.** *Urol Oncol* 2013, **31**(2):264–270.
44. Miyake M, Goodison S, Lawton A, Zhang G, Gomes-Giacoaia E, Rosser CJ: **Erythropoietin is a JAK2 and ERK1/2 effector that can promote renal tumor cell proliferation under hypoxic conditions.** *J Hematol Oncol* 2013, **6**:65.
45. Hedberg Y, Davoodi E, Roos G, Ljungberg B, Landberg G: **Cyclin-D1 expression in human renal-cell carcinoma.** *Int J Cancer* 1999, **84**(3):268–272.
46. Jeselsohn R, Brown NE, Arendt L, Klebba I, Hu MG, Kuperwasser C, Hinds PW: **Cyclin D1 kinase activity is required for the self-renewal of mammary stem and progenitor cells that are targets of MMTV-ErbB2 tumorigenesis.** *Cancer Cell* 2010, **17**(1):65–76.
47. Pestell RG, Li Z: **Antisense to cyclin D1 inhibits VEGF-stimulated growth of vascular endothelial cells: implication of tumor vascularization.** *Clin Cancer Res* 2006, **12**(15):4459–4462.
48. Casimiro MC, Crosariol M, Loro E, Ertel A, Yu Z, Dampier W, Saria EA, Papanikolaou A, Stanek TJ, Li Z, Wang C, Fortina P, Addya S, Tozeren A, Knudsen ES, Arnold A, Pestell RG: **ChIP sequencing of cyclin D1 reveals a transcriptional role in chromosomal instability in mice.** *J Clin Invest* 2012, **122**(3):833–843.
49. Saha MN, Qiu L, Chang H: **Targeting p53 by small molecules in hematological malignancies.** *J Hematol Oncol* 2013, **6**:23.
50. Wu K, Yang Y, Wang C, Davoli MA, D'Amico M, Li A, Cveklova K, Kozmik Z, Lisanti MP, Russell RG, Cvekl A, Pestell RG: **DACH1 inhibits transforming growth factor-beta signaling through binding Smad4.** *J Biol Chem* 2003, **278**(51):51673–51684.
51. Chen DL, Zeng ZL, Yang J, Ren C, Wang DS, Wu WJ, Xu RH: **L1cam promotes tumor progression and metastasis and is an independent unfavorable prognostic factor in gastric cancer.** *J Hematol Oncol* 2013, **6**:43.
52. Shi K, Jiang Q, Li Z, Shan L, Li F, An J, Yang Y, Xu C: **Sodium selenite alters microtubule assembly and induces apoptosis in vitro and in vivo.** *J Hematol Oncol* 2013, **6**:7.
53. Dong LH, Cheng S, Zheng Z, Wang L, Shen Y, Shen ZX, Chen SJ, Zhao WL: **Histone deacetylase inhibitor potentiated the ability of MTOR inhibitor to induce autophagic cell death in Burkitt leukemia/lymphoma.** *J Hematol Oncol* 2013, **6**:53.

doi:10.1186/s13045-014-0073-5

**Cite this article as:** Chu *et al.*: DACH1 inhibits cyclin D1 expression, cellular proliferation and tumor growth of renal cancer cells. *Journal of Hematology & Oncology* 2014 **7**:73.

**Submit your next manuscript to BioMed Central and take full advantage of:**

- Convenient online submission
- Thorough peer review
- No space constraints or color figure charges
- Immediate publication on acceptance
- Inclusion in PubMed, CAS, Scopus and Google Scholar
- Research which is freely available for redistribution

Submit your manuscript at  
[www.biomedcentral.com/submit](http://www.biomedcentral.com/submit)

