

RESEARCH

Open Access



# Sex-dependent adaptive changes in serotonin-1A autoreceptor function and anxiety in Deaf1-deficient mice

Christine Luckhart<sup>1,2</sup>, Tristan J. Philippe<sup>1,2</sup>, Brice Le François<sup>1,2</sup>, Faranak Vahid-Ansari<sup>1,2</sup>, Sean D. Geddes<sup>2</sup>, Jean-Claude Béïque<sup>2</sup>, Diane C. Lagace<sup>2</sup>, Mireille Daigle<sup>1</sup> and Paul R. Albert<sup>1,2\*</sup>

## Abstract

The C (-1019) G rs6295 promoter polymorphism of the serotonin-1A (5-HT<sub>1A</sub>) receptor gene is associated with major depression in several but not all studies, suggesting that compensatory mechanisms mediate resilience. The rs6295 risk allele prevents binding of the repressor Deaf1 increasing 5-HT<sub>1A</sub> receptor gene transcription, and the Deaf1<sup>-/-</sup> mouse model shows an increase in 5-HT<sub>1A</sub> autoreceptor expression. In this study, Deaf1<sup>-/-</sup> mice bred on a mixed C57BL/6-BALB/c background were compared to wild-type littermates for 5-HT<sub>1A</sub> autoreceptor function and behavior in males and females. Despite a sustained increase in 5-HT<sub>1A</sub> autoreceptor binding levels, the amplitude of the 5-HT<sub>1A</sub> autoreceptor-mediated current in 5-HT neurons was unaltered in Deaf1<sup>-/-</sup> mice, suggesting compensatory changes in receptor function. Consistent with increased 5-HT<sub>1A</sub> autoreceptor function *in vivo*, hypothermia induced by the 5-HT<sub>1A</sub> agonist DPAT was augmented in early generation male but not female Deaf1<sup>-/-</sup> mice, but was reduced with succeeding generations. Loss of Deaf1 resulted in a mild anxiety phenotype that was sex- and test-dependent, with no change in depression-like behavior. Male Deaf1 knockout mice displayed anxiety-like behavior in the open field and light-dark tests, while female Deaf1<sup>-/-</sup> mice showed increased anxiety only in the elevated plus maze. These data show that altered 5-HT<sub>1A</sub> autoreceptor regulation in male Deaf1<sup>-/-</sup> mice can be compensated for by generational adaptation of receptor response that may help to normalize behavior. The sex dependence of Deaf1 function in mice is consistent with a greater role for 5-HT<sub>1A</sub> autoreceptors in sensitivity to depression in men.

**Keywords:** Major depression, Serotonin, Receptor signaling, Raphe, Anxiety, Transgenerational

## Introduction

The 5-HT<sub>1A</sub> receptor is the most abundant and widely expressed serotonin (5-HT) receptor in the brain [1, 2], and functions both as a presynaptic autoreceptor to inhibit firing of raphe 5-HT neurons, and as a postsynaptic receptor that mediates 5-HT actions on a variety of physiological and affective processes [3–6]. Both pre- and post-synaptic 5-HT<sub>1A</sub> receptors contribute to the anxiety phenotype in mouse models [7]. Global knockout of the 5-HT<sub>1A</sub> receptor or early postnatal knockdown of the pre-synaptic 5-HT<sub>1A</sub> autoreceptor results in an anxiety phenotype [8], which is rescued by expression of the post-synaptic forebrain 5-HT<sub>1A</sub>

receptor in the global 5-HT<sub>1A</sub><sup>-/-</sup> mice [9]. On the other hand, a 30 % knockdown of presynaptic 5-HT<sub>1A</sub> receptors in the adult results in resilience to stress and depression [10]. One possible explanation is that 5-HT hyperactivity during development leads to anxiety, while a mild increase in 5-HT activity in adult leads to resilience to depression. Conversely, an increase in 5-HT<sub>1A</sub> autoreceptors would lead to increased susceptibility to depression by reducing serotonergic activity [3–6]. Thus, subtle alterations in the expression of presynaptic 5-HT<sub>1A</sub> receptors at different stages of life can significantly influence behavior phenotypes.

In humans, altered activity of the serotonin system has long been implicated in major depression and anxiety disorders [11]. These illnesses are associated with alterations in cerebrospinal fluid levels of 5-HT and its metabolites, regional changes in 5-HT receptors, and

\* Correspondence: palbert@uottawa.ca

<sup>1</sup>Ottawa Hospital Research Institute (Neuroscience), Ottawa, Canada

<sup>2</sup>Department of Cellular and Molecular Medicine, University of Ottawa Brain and Mind Research Institute, 451 Smyth Road, Ottawa, ON K1H-8M5, Canada



functional polymorphisms that alter expression of 5-HT genes [12, 13], including the 5-HT1A C (-1019) G rs6295 [14]. The risk allele G (-1019) fails to bind to transcriptional repressors, including NUDR/Deaf1. Deaf1 is a transcription factor that has been shown to repress its own expression, as well as that of several target genes, including the 5-HT1A receptor [15, 16]. We have shown that the G (-1019) prevents Deaf1 repression of the 5-HT1A gene, resulting in increased transcription of the 5-HT1A autoreceptor [16]. Consistent with these findings, in human depressed subjects, the G (-1019) allele has been associated with increased raphe 5-HT1A binding potential [17]. However, these associations in human subjects are not always observed, suggesting that adaptive changes in 5-HT1A autoreceptor function may compensate for the risk alleles [18, 19]. Furthermore, these illnesses are treated with antidepressant drugs that enhance 5-HT neurotransmission, but chronic treatment is required despite their rapid entry in the brain, suggesting a role for adaptive changes in 5-HT1A autoreceptor function in antidepressant response [20].

In order to model the effect of the 5-HT1A G (-1019) allele and the role of Deaf1 *in vivo*, we have studied the Deaf1 knockout mouse. In Deaf1<sup>-/-</sup> mice on a C57BL6 background, raphe 5-HT1A RNA and 5-HT1A autoreceptor-labeled cells were markedly increased, with a small reduction in 5-HT1A RNA and cells labeled for post-synaptic 5-HT1A receptors in the prefrontal cortex [21]. However, the behavior of these mice could not be addressed due to lethality from partially penetrant exencephaly [22]. To avoid this lethality, Deaf1<sup>-/-</sup> mice were bred on a mixed C57BL6-BALB/c background. Consistent with our previous study [21], the knockout of Deaf1 led to an increased level of 5-HT1A autoreceptor binding in the raphe and to an exaggerated autoreceptor-mediated hypothermia response. However, the up-regulation of 5-HT1A autoreceptor function following Deaf1 gene deletion waned with successive generations, as determined by both 5-HT1A-mediated hypothermia and cellular electrophysiology from 5-HT neurons. Knockout of Deaf1 led to a sex-dependent effect with an initial increase in hypothermia response and anxiety in males that declined additional generations, while females had normal autoreceptor function and a partial anxiety effect. These studies suggest that adaptation in 5-HT1A receptor function in Deaf1<sup>-/-</sup> mice is sex-dependent, and the anxiety phenotype persists but differs in male and female Deaf1<sup>-/-</sup> mice.

## Results

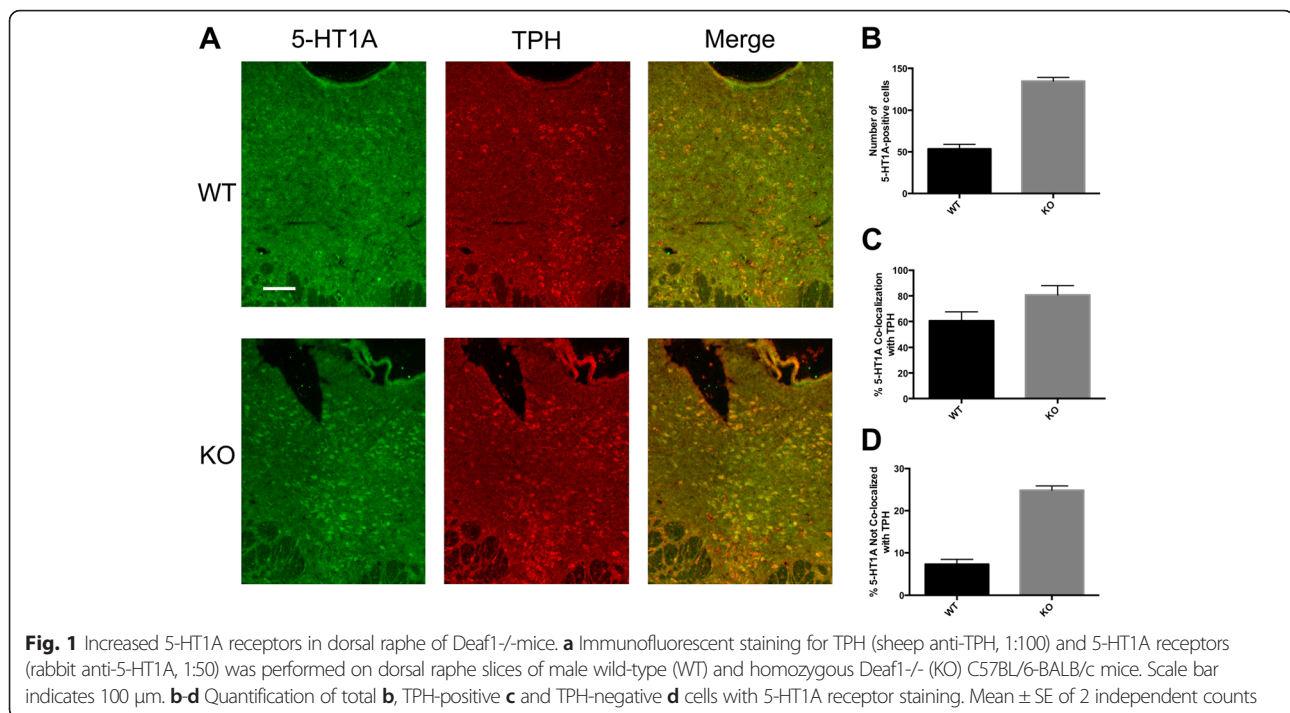
### Adaptive changes in 5-HT1A autoreceptor responses in Deaf1 knockout mice

We previously observed increased levels of 5-HT1A autoreceptors in Deaf1<sup>-/-</sup> mice on the C57BL6 background [21], and addressed whether this occurs in Deaf1<sup>-/-</sup> C57BL6

mice crossed to BALB/c mice and bred for several generations. Immunofluorescence staining of raphe sections from male mice was using antibodies to 5-HT1A receptor and TPH, a marker of 5-HT neurons (Fig. 1). There was a 2.5-fold increase in 5-HT1A and TPH co-labeled cells for the Deaf1<sup>-/-</sup> genotype and a 2-fold increase in the Deaf1<sup>+/-</sup> mice compared to wild-type, similar to the 3-fold increase observed on the C57BL6 background [21], confirming an increase in 5-HT1A autoreceptors in the Deaf1<sup>-/-</sup> mice. In order to quantify the levels of 5-HT1A receptors, we performed autoradiography using the selective 5-HT1A antagonist <sup>125</sup>I-MPPI [23] (Fig. 2). In both male and female Deaf1<sup>-/-</sup> mice, a significant increase in 5-HT1A receptor binding sites was observed in the dorsal (greater in females) and median raphe compared to wild-type mice, with no significant change in hippocampal 5-HT1A receptor levels. These results clarify that in both male and female mice, knockout of Deaf1 results in a specific up-regulation of 5-HT1A autoreceptors.

To examine whether the increased level of 5-HT1A receptors results in greater functional activity, the magnitude of hypothermia induced by acute administration of the 5-HT1A agonist DPAT was measured as an index of 5-HT1A autoreceptor responsiveness *in vivo* (Fig. 3) [8]. In first generation mixed background mice, we observed a significant 3-fold greater reduction in body temperature in the Deaf1 knockout males compared to wild-type males and a smaller enhancement in females, at 0.5 mg/kg DPAT (Fig. 3a, b) and 0.25 mg/kg DPAT (not shown). In heterozygotes, the DPAT response did not differ from wild-type mice (not shown). Unexpectedly, in later ( $\geq 3$ ) generations on the mixed background, despite the increase in 5-HT1A autoreceptor levels (Figs. 1, 2), the DPAT-induced hypothermia was no longer enhanced in Deaf1<sup>-/-</sup> females, and was actually attenuated in male Deaf1 knockout mice compared to wild-type mice at 0.5 mg/kg (Fig. 3c, d) and 0.25 mg/kg DPAT (not shown). These data suggest that an increase in 5-HT1A autoreceptor function observed in the first generation of Deaf1<sup>-/-</sup> C57BL6-BALB/c mice is compensated for by adaptation of 5-HT1A receptor responsiveness in succeeding generations.

To further investigate the mechanisms underlying a potential adaptation of the function of 5-HT1A autoreceptors with succeeding generations of Deaf1<sup>-/-</sup> mice, we performed whole-cell recordings ( $V_m = 55$  mV) of 5-HT neurons from late ( $\geq 3$ ) generation mixed background mice and monitored the effects of bath administration of the 5-HT1A agonist 5-CT (100 nM). Recordings from raphe 5-HT neurons revealed 5-HT1A receptor-mediated outward currents of similar magnitude in Deaf1 knockout and wild-type mice (Fig. 4). We further examined our data set for potential sex-specific alterations in the responsiveness of 5-HT1A receptors and found that the maximum 5-CT induced current was



reduced by 60 % in *Deaf1* KO compared to wild-type mice, with no difference observed in females (Additional file 1: Figure S1). These results are consistent with the hypothermia data (Fig. 3), and together indicate that the functional activity of 5-HT1A autoreceptors present in *Deaf1*<sup>-/-</sup> mice actually declines over generations, despite increased abundance of 5-HT1A autoreceptors.

#### Anxiety phenotypes in late generation male and female *Deaf1*<sup>-/-</sup> mice

In order to address the effects of *Deaf1* gene deletion on behavior, we performed pilot experiments testing locomotor activity, anxiety, and depression phenotypes in late generation mice and observed differences between males and females (Additional file 1: Figure S2). Therefore, the behavior of male and female *Deaf1* deficient mice was examined separately. Anxiety-like behavior was measured using three well-validated tests: the elevated plus maze (EPM), open field (OF), and light-dark tests (Fig. 5). In the EPM, time spent in open arms was not different in male *Deaf1*<sup>-/-</sup> mice compared to wild-type mice (Fig. 5a). However, in the open field test, there was a trend for male *Deaf1*<sup>-/-</sup> mice to avoid the centre (Fig. 5b). In the light-dark test, male *Deaf1*<sup>-/-</sup> mice showed reduced time in the light and had significantly increased latency to enter the dark chamber, indicating a freezing response when initially placed in the light, both consistent with an anxiety phenotype (Fig. 5c). Overall, two of three tests indicated that male *Deaf1*<sup>-/-</sup> mice tend to have higher anxiety. Female *Deaf1*<sup>-/-</sup> mice showed a

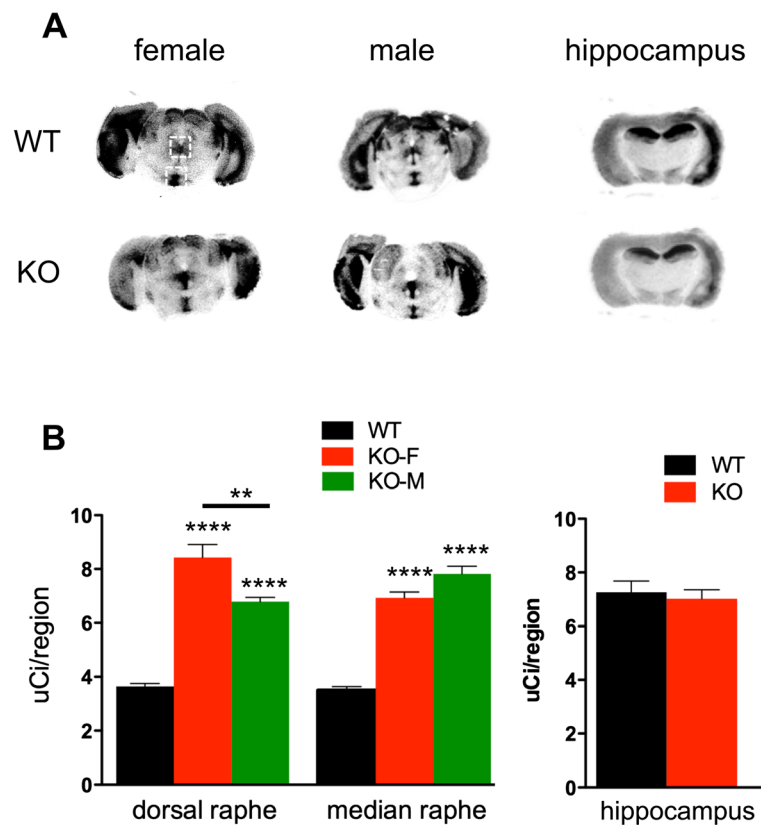
75 % reduction in time in open arms in the EPM compared to wild-type mice, suggesting an anxiety phenotype in this test (Fig. 5a). In contrast, no increase in anxiety was observed in female *Deaf1*<sup>-/-</sup> mice in the OF (Fig. 5b) or the light-dark-test (Fig. 5c). Specifically, in the light-dark test the female knockouts spent more time in the light, suggesting reduced anxiety (Fig. 5c). These differences seen in anxiety tests did not appear to be caused by any locomotor impairment since there were no differences between genotypes or sex in novel cage activity (Additional file 1: Figure S3). Taken together, the anxiety-like behavior in *Deaf1*<sup>-/-</sup> mice was sex-dependent: the most prominent anxiety phenotype occurred in light-dark test for males, while in the EPM for female *Deaf1*<sup>-/-</sup> mice.

When tested in two different assays for depression-like despair behavior, the tail suspension test (Fig. 6a) and forced swim test (Fig. 6b), *Deaf1*<sup>-/-</sup> male and female mice were indistinguishable from wild-type mice. These results indicate a lack of depression-like phenotype in *Deaf1* knockout mice. Similarly, in preliminary studies no significant difference between wild-type or *Deaf1* knockout mice was seen in the sucrose preference test (data not shown). These data suggest that the *Deaf1*<sup>-/-</sup> mice have sex-dependent changes in anxiety, but no detectable depression-like behavior.

#### Discussion

##### 5-HT1A autoreceptor adaptation in *Deaf1*<sup>-/-</sup> mice

*Deaf1* has been implicated in the regulation of 5-HT1A receptor expression *in vitro*, and indirectly in major

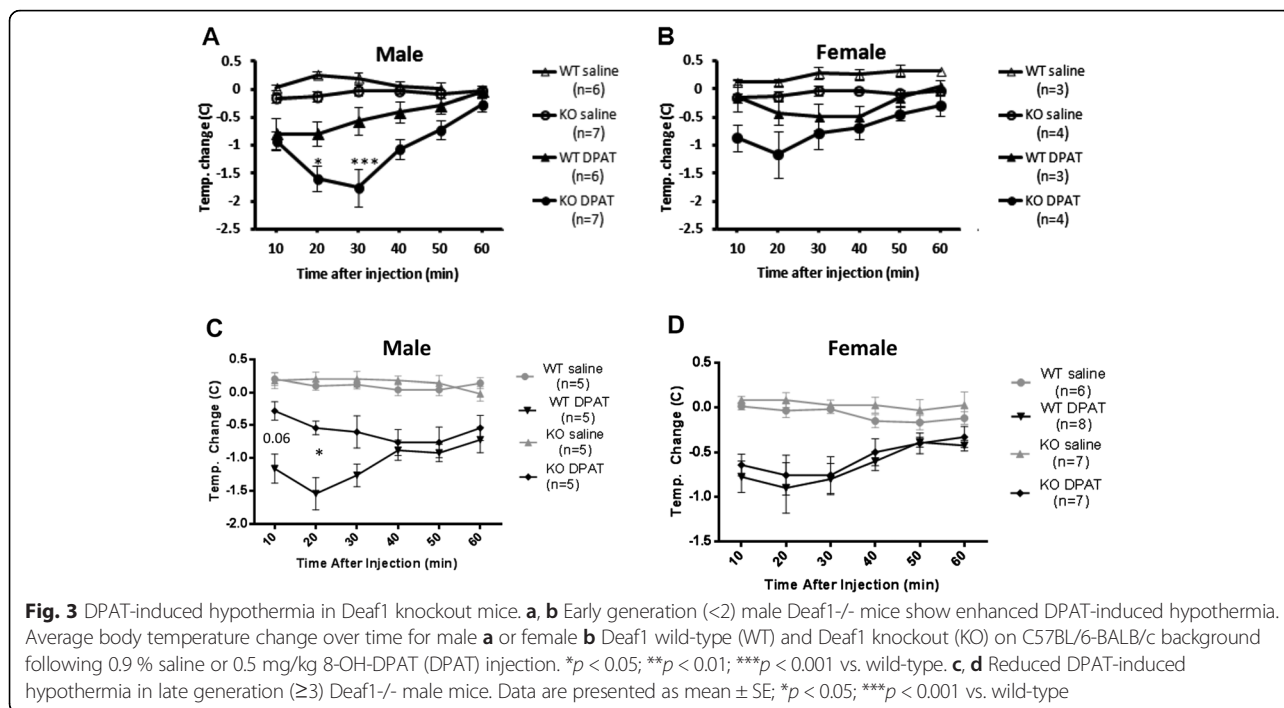


**Fig. 2** Increased 5-HT<sub>1A</sub> receptor binding in Deaf1<sup>-/-</sup> raphe. 5-HT<sub>1A</sub> receptor autoradiography of representative midbrain (male-M and female-F) and hippocampus (male) sections from Deaf1<sup>-/-</sup> (KO) and wild-type (WT) mice was done using <sup>125</sup>I-MPPI. **a** Representative sections of raphe, including dorsal and median raphe (in boxes), and of hippocampus are shown. **b** Average signal/region was quantified as described in Methods for dorsal and median raphe, and hippocampus. Since there was no sex difference in 5-HT<sub>1A</sub> binding in raphe (WT) and hippocampus (WT and KO), pooled values are shown. Data represent mean ± SEM ( $n = 4$ ), \*\* $p < 0.01$ ; \*\*\*\* $p < 0.0001$

depression in humans [16, 24]. Deaf1 binds to sites in the human and mouse 5-HT<sub>1A</sub> promoters to repress 5-HT<sub>1A</sub> transcription in raphe and non-neuronal cells. However, in the human HTR1A promoter, Deaf1 fails to bind to its site at the rs6295 G-allele, leading to increased 5-HT<sub>1A</sub> autoreceptor expression to reduce serotonergic activity and predispose to depression. The G-allele has been associated with major depression and suicide [16, 18, 25], and with increased 5-HT<sub>1A</sub> autoreceptor levels in depressed patients [26, 27]. Based on its repressor activity at the mouse 5-HT<sub>1A</sub> promoter, we found that knockout of Deaf1 in mice increases 5-HT<sub>1A</sub> autoreceptor expression [21], which we confirm and extend here in a mixed C57BL6-BALB/c background by quantifying 5-HT<sub>1A</sub> autoreceptor binding levels (Figs. 1, 2). We therefore addressed whether the increase in 5-HT<sub>1A</sub> autoreceptors in Deaf1 knockout mice leads to functional changes *in vivo*.

We first measured DPAT-induced hypothermia, which in mice provides a read-out of the activity of raphe 5-HT<sub>1A</sub> autoreceptors *in vivo* [8, 28]. Male, but not female Deaf1<sup>-/-</sup> mice displayed enhanced DPAT-induced

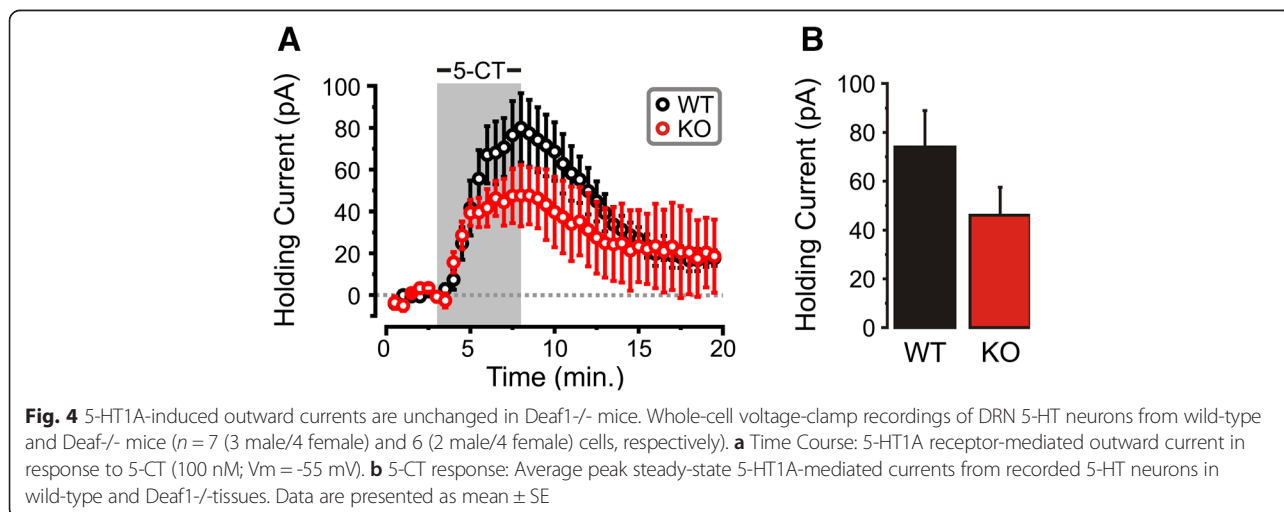
hypothermia in early generations, consistent with an increase in 5-HT<sub>1A</sub> autoreceptor function. However, this effect was lost in subsequent generations, with males showing a significantly blunted response to the agonist. This reversal of the DPAT response suggests that adaptations in 5-HT<sub>1A</sub> autoreceptor function occur over generations in the mixed background of male Deaf1<sup>-/-</sup> mice, but the mechanisms involved remain unclear. Whole-cell recordings from 5-HT neurons in raphe slices showed that the magnitude of the outward current induced by the 5-HT<sub>1A</sub> agonist 5-CT was similar or even slightly reduced in Deaf1<sup>-/-</sup> compared to wild-type slices. This result confirms that following the initial increase in 5-HT<sub>1A</sub> autoreceptor function detected in the hypothermia test, the receptor adapts its signaling to normalize effects on 5-HT neuron excitability. Multiple mechanisms could mediate the normalization of 5-HT<sub>1A</sub> autoreceptor signaling with passing generations. Compensatory reduction in coupling of 5-HT<sub>1A</sub> autoreceptors to G-proteins and GIRK channels could reduce 5-HT<sub>1A</sub> responses, as observed following chronic stress or corticosterone treatment [29–31]. Thus, homeostatic



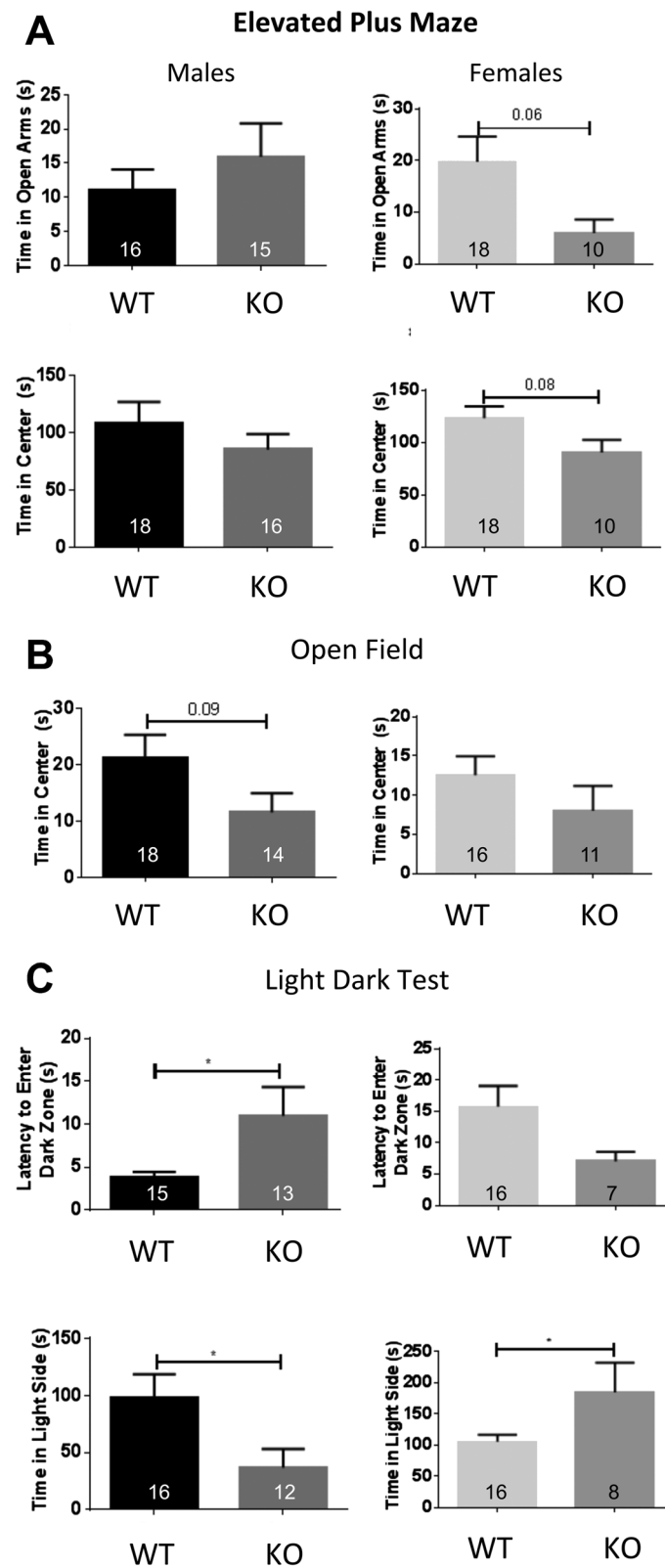
mechanisms appear to compensate for the up-regulation of 5-HT1A autoreceptors to normalize 5-HT1A receptor function, which could account for the relatively mild behavioral phenotype observed in the Deaf1<sup>-/-</sup> mice.

The mixed C57BL6-BALB/c background could enhance the normalization of 5-HT1A autoreceptor responses in Deaf1 null mice, since BALB/c mice have a mutation in the TPH2 gene that reduces 5-HT synthesis [32]. In C57BL6 mice carrying this TPH2 mutation, DPAT-induced hypothermia was significantly reduced, despite normal 5-HT1A autoreceptor binding and G-protein coupling, implying that reducing 5-HT levels

impairs the effect of DPAT or 5-HT1A responsiveness *in vivo* [33, 34]. In addition to reduced 5-HT due to the Balb/c background, the Deaf1<sup>-/-</sup> C57BL6 mice also have a 50 % reduction in 5-HT [21] which together may contribute to blunt 5-HT1A autoreceptor responsiveness on the mixed background over time. On the other hand, in 5-HTT<sup>-/-</sup> mice persistently enhanced 5-HT neurotransmission results in greater 5-HT1A receptor desensitization in females vs. males, which involves receptor down-regulation and the uncoupling of Gi proteins from GIRK channels [35–37]. Thus, in female 5-HTT<sup>-/-</sup> mice the 5-HT1A autoreceptor appears to desensitize with increased







**Fig. 5** (See legend on next page.)

(See figure on previous page.)

**Fig. 5** Anxiety-like behavior in *Deaf1* knockout mice. Anxiety phenotype was assessed using three tests in male (left panels) and female (right panels) wild-type (WT) vs. *Deaf1* knockout (KO) mice, N values indicated in panels. **a** Elevated Plus Maze test. Time spent in open arms, in the center and total distance travelled were averaged. **b** Open Field test. Time spent in the center and total distance traveled. **c** Light-Dark test. Time spent in the light side and latency to enter the dark zone for the first time was averaged. Data are presented as mean  $\pm$  SE; \* $p < 0.05$  or as indicated

5-HT signaling, while in male *Deaf1*<sup>-/-</sup> and TPH2 mutant mice, long-term reduction in 5-HT results in reduced 5-HT<sub>1A</sub> autoreceptor function.

The mixed C57BL6-BALB/c background may also contribute to the transgenerational change in 5-HT<sub>1A</sub> autoreceptor function in *Deaf1* knockout mice. Non-genetic transgenerational transmission of the anxiety phenotype of the 5-HT<sub>1A</sub> knockout has been shown in mice with an outbred Swiss-Webster background, but not for inbred C57BL6 mice [38]. Embryonic implantation of wild-type 5-HT<sub>1A</sub> embryos in 5-HT<sub>1A</sub><sup>-/-</sup> Swiss-Webster mothers transmitted the anxiety phenotype of the knockout mother to the adult offspring, and also influenced their hippocampal development. Like the 5-HT<sub>1A</sub> knockout and loss of *Deaf1* in mice, the C (-1019) G HTR1A polymorphism in humans dys-regulates the HTR1A gene globally [27]. Our results in the mixed C57BL6-Balb/c background suggest that altered signaling of 5-HT<sub>1A</sub> receptors could be one mechanism of adaptation of the anxiety phenotype to the loss of *Deaf1* across generations.

A transgenerational adaptation in 5-HT<sub>1A</sub> receptor function in humans could explain in part inconsistencies in the association of the 5-HT<sub>1A</sub> C (-1019) G polymorphism with major depression and anxiety in different studies [18]. The association of the 5-HT<sub>1A</sub> G (-1019) allele with major depression appears most robust in genetically homogeneous populations, such as in depressed families from Utah [39]. In females from the Utah cohort, carrying 5-HT<sub>1A</sub> risk allele strengthened association of depression with the LHPP gene, a gene also identified by genome-wide association in a depressed Chinese female population [40]. LHPP can dephosphorylate histidine residues, which could inactivate G-protein and potassium channel function to uncouple 5-HT<sub>1A</sub> receptors [41]. Greater adaptive changes in 5-HT<sub>1A</sub> function in male G (-1019) carriers could in part account for the lack of this association in male from the Utah cohort. On the other hand, increased raphe 5-HT<sub>1A</sub> binding potential was strongly associated with depression in men but not women [42], and could reflect inadequate normalization of 5-HT<sub>1A</sub> autoreceptor expression in depressed males. Thus, 5-HT<sub>1A</sub> autoreceptor regulation appears to be different in males and females and could result in differences in susceptibility to depression.

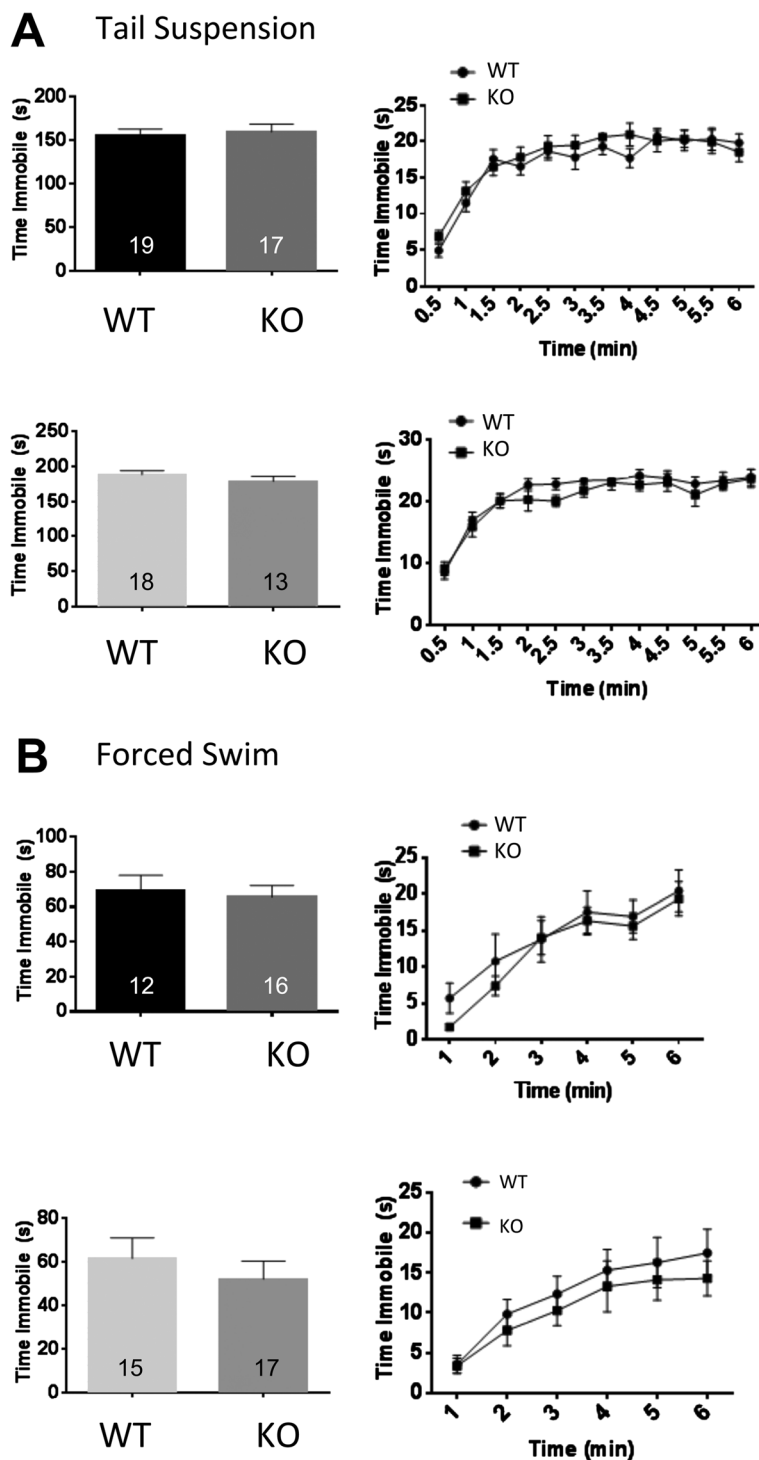
#### Different phenotypes in male and female *Deaf1*<sup>-/-</sup> mice

Consistent with altered 5-HT<sub>1A</sub> autoreceptor function in male *Deaf1*<sup>-/-</sup> mice, anxiety-like behaviors differed in

male and female *Deaf1*<sup>-/-</sup> mice. Male *Deaf1*<sup>-/-</sup> mice demonstrated greater anxiety-like behavior in two tests (light-dark and open field), but not in the elevated plus maze test. This is consistent with previous findings in brain-specific male *Deaf1* knockout C57BL6 mice, which showed a mild anxiety phenotype in this test with no change in open arm time [22]. The female *Deaf1*<sup>-/-</sup> mice displayed a mixed phenotype, mildly anxious in the elevated plus maze, but with apparently reduced anxiety in the light-dark test. The elevated plus maze test is more dependent on exploratory behavior and less sensitive to neophobia than the open field or light-dark tests [43]. Hence, the weak anxiety phenotype in females may reflect reduced exploration, while the greater latency of the *Deaf1*<sup>-/-</sup> males to escape to the dark side in the light-dark test could be interpreted as a light-dependent panic response. In contrast, *Deaf1*<sup>-/-</sup> females displayed apparently reduced anxiety in the light-dark test, reduced latency to enter the dark chamber suggesting that they are less sensitive to light than the males in this test, which has the brightest light intensity of the tests. The anxiety phenotype in *Deaf1*<sup>-/-</sup> males is consistent with the role in males of reduced 5-HT<sub>1A</sub> autoreceptor function during the early post-natal period in the anxiety phenotype [8], that remains to be addressed in females.

The *Deaf1*<sup>-/-</sup> mice did not display depression-like behavior in the forced swim or tail suspension tests. Importantly, the anxiety phenotype of our mixed background *Deaf1* null mice is consistent with the brain-specific knockout of *Deaf1*, which in male mice induced an anxiety phenotype in one test, and no depression-like effects [22]. Adaptive changes in 5-HT<sub>1A</sub> autoreceptor function in *Deaf1*<sup>-/-</sup> mice may blunt changes in depression-like behavior in these mice. In humans, analogous adaptive changes may explain why the association of the C (-1019) G HTR1A polymorphism with depression in humans is not always shown. Since this polymorphism affects multiple factors in addition to *Deaf1*, including *Hes1/5* [44], additional compensatory changes may occur in humans that are not seen in *Deaf1*<sup>-/-</sup> mice.

In summary, our data indicate that *Deaf1* regulates 5-HT<sub>1A</sub> autoreceptors *in vivo* and show that upon loss of *Deaf1* regulation, compensatory changes occur over generations leading to adaptation of receptor responsiveness that may underlie the mild anxiety phenotype. Interestingly, the sex differences we observe in 5-HT<sub>1A</sub> autoreceptor function suggest that different adaptive mechanisms are recruited in males and females to



**Fig. 6** Depression-like behavior in *Deaf1* knockout mice. Behavioral despair phenotype was assessed using tail suspension and forced swim tests in male (upper panels) and female (lower panels) wild-type (WT) and *Deaf1* knockout (KO) mice, N values as indicated. **a** Tail suspension test. Time spent immobile was averaged across the final four minutes of the test (left panels) and the time spent immobile shown in 30-second intervals across the full 6-min duration (right panels). **b** Forced Swim test. Time spent immobile averaged across the final four minutes of the FS test (left panels). Time spent immobile shown in 30-second intervals across the full 6-min FS test (right panels). Data are presented as mean  $\pm$  SE



regulate 5-HT activity and behavioral phenotype. Further studies comparing male and female gene regulatory mechanisms are needed to understand the generation of sex dependent differences in behavior.

## Methods

### Animals

Deaf1<sup>-/-</sup> mice on C57BL/6 background were mated to BALB/c (Charles River Laboratories, Montreal, Canada) and then propagated by crosses between heterozygous Deaf1 mice. Mice were pair-housed in standard Plexiglas cages on a 12/12 h light/dark cycle with ad libitum access to food and water.

### Deaf1 genotype

DNA was extracted (REDEExtract-N-Amp Tissue PCR kit, Sigma) from tissue samples and genotyped using Phusion DNA polymerase (Thermo-Fisher, Ottawa ON) and the primers: 5'-GGG CTT CCG GGT CAT TCT GT-3', 5'-ACT AAG AGG GTC ACA CAA AAG AAC AAA-3', and 5'-TGC ACC CAC CAC CAA GAT AAG AA-3'. The PCR conditions were: 98 °C, 30 s; 34 cycles: 98 °C, 10 s, 62 °C, 30 s, 72 °C, 20 s, 84 °C, 10s; then 72 °C, 10 min; 10 °C. This protocol results in 267-bp (wild-type) or 451-bp (knockout) products. Each mouse was genotyped both at weaning and at sacrifice.

### Immunofluorescence

Mice were anaesthetized (Euthanyl; 0.01 mL/g), perfused by cardiac infusion of PBS followed by 4 % paraformaldehyde. Whole brains were extracted and post-fixed overnight in 4 % paraformaldehyde. Brains were then kept in 20 % sucrose solution, changed daily, for five days and frozen. Coronal brain slices (12- $\mu$ m) were taken from the brainstem including the dorsal raphe nuclei (DRN, Bregma -4.2 to -4.96). Slices were thaw-mounted on Superfrost slides (Thermo-Fisher) and kept at -80 °C. Staining was done for 5-HT<sub>1A</sub> receptors (purified anti-5-HT<sub>1A</sub> 1:50 [21], donkey anti-rabbit 1:1000) colocalized with TPH (sheep anti-TPH 1:100, donkey anti-sheep 1:200). Images were acquired using an Axiovert S100 Zeiss microscope. Positively-labelled cells were manually counted using ImageJ software with counter blinded to genotype.

### 5-HT<sub>1A</sub> receptor autoradiography

Deaf1 KO and WT littermate mice (11 wks old,  $n = 4$ /genotype) were sacrificed by cervical dislocation and decapitation. Extracted brains were frozen immediately on dry ice (-75 °C) and maintained at -80 °C until sectioning. Brains were cryosectioned at a thickness of 25  $\mu$ m and mounted sections were maintained at -80 °C until processing. Mounted sections were processed for <sup>125</sup>I-MPPI (Perkin Elmer, Boston, MA) autoradiography as described

[23]. Sections were exposed to Kodak BioMax MR film (VWR) for 24 h. Films were digitized at 1200-dpi resolution using an Epson Perfection V500 Photo Scanner, and signal density was measured using the mean luminosity function in ImageJ (1.49). Levels of 5-HT<sub>1A</sub> binding ( $\mu$ Ci) were quantified by analyzing a standardized template outlining the region-of-interest, and adjacent background lacking specific binding subtracted. For raphe, data from sections at Bregma -4.36, -4.48, -4.60, -4.72 cm were averaged; for hippocampus, Bregma -1.82 cm was used. Signals were within the linear range of the film and quantified based on standard curve using ARC146-F <sup>14</sup>C standard (American Radiochemicals Inc, St. Louis, MO).

### DPAT-Induced Hypothermia

The procedure was performed between 11 am and 4 pm. Mice were transported to the testing room and weighed. Internal temperature was taken once every 10 min using a rectal thermometer for 40 min (4 baseline measurements) followed by intraperitoneal injection of the indicated dose of DPAT (8-hydroxy-N, N-dipropyl-2-aminotetralin; Sigma) or an equivalent volume of 0.9 % saline (vehicle). Saline injection was given to each mouse on Day 1, and DPAT injection on Day 3. For analysis purposes, the first baseline temperature was discarded. The remaining three baseline values were averaged and the difference between the average baseline and recorded temperature was graphed across time.

### Acute brain slice preparation

Brainstem slices (300- $\mu$ m) containing the DRN were prepared from 8–10 week old mice as previously described [45]. In brief, mice were anesthetized and sacrificed by decapitation. Once the brain was removed, coronal slices were made from a block of brain tissue while emerged in ice-cold choline chloride-based cutting solution of the following composition: (mM): 119 choline-Cl, 2.5 KCl, 1 CaCl<sub>2</sub>, 4.3 MgSO<sub>4</sub>·7H<sub>2</sub>O, 1 NaH<sub>2</sub>PO<sub>4</sub>, 1.30 sodium L-ascorbate, 26.20 NaHCO<sub>3</sub>, and 11 glucose, and equilibrated with 95 % O<sub>2</sub>, 5 % CO<sub>2</sub>. Slices were then recovered in a chamber with standard Ringer's solution (mM): 119 NaCl, 2.5 CaCl<sub>2</sub>, 1.3 MgSO<sub>4</sub>·7H<sub>2</sub>O, 1 NaH<sub>2</sub>PO<sub>4</sub>, 26.2 NaHCO<sub>3</sub>, and 11 glucose, and bubbled with 95/5 % O<sub>2</sub>/CO<sub>2</sub>.

### Whole-cell electrophysiology

DRN neurons were visualized using an upright microscope (Examiner D1; Zeiss, Oberkochen, Germany) equipped with Dodt-gradient-contrast (40 $\times$ /0.75NA objective). 5-HT neurons were identified by morphological and biophysical characteristics as previously established (Geddes, et al., 2015). Whole-cell recordings carried out at room temperature in standard Ringer's solution using borosilicate glass patch electrodes (3–6 M $\Omega$ ; World Precision Instruments). 5-HT<sub>1A</sub> receptor-mediated currents

were elicited by bath applying the 5-HT<sub>1A</sub> receptor agonist 5-carboxamidotryptamine (5-CT; 100 nM; Tocris) when recording from 5-HT neurons in the DRN. Holding current was monitored at 0.1 Hz while the cells were voltage-clamped at -55 mV. These recordings were carried out using an internal solution of the following composition (mM): 115 potassium gluconate, 20 KCl, 10 sodium phosphocreatine, 10 HEPES, 4 Mg<sup>2+</sup>-ATP, and 0.5 GTP, pH 7.25 (adjusted with KOH; osmolality, 280–290 mOsmol/L). Access resistance was continuously monitored by applying a 125 ms, 2 mV hyperpolarizing pulse every 10 s, and recordings were discarded if the access resistance changed by >30 %.

### Behavioral testing

All tests were performed in the University of Ottawa Behavioral Core Facility using 8–9 week old Deaf1<sup>-/-</sup> and WT littermate mice between 9 AM and 5 PM. The tests were performed in the following order: elevated plus maze, open field, light-dark paradigm, tail suspension, and forced swim test, with a minimum of 2 days between tests. The beam break test was performed after elevated plus maze and before the tail suspension test. Apparatus were cleaned after each trial.

### Elevated plus maze

Each mouse was placed in the center of an elevated, two-arm plus maze (Noldus, The Netherlands) measuring 6 cm wide and 75 cm long and 74 cm above ground for 10 min with illumination (100–110 Lux). The closed arm was enclosed by walls 20 cm tall while the open arms had no walls. Open and closed arm time was monitored by overhead camera, fed to a computer, and analyzed using Noldus Ethovision (version 10) software.

### Open field test

The mouse was placed in the corner of an opaque, illuminated (250–300 Lux) white box measuring 45 × 45 × 45-cm for 10 min and monitored using an overhead camera fed to a computer in a separate room and analyzed using Noldus Ethovision 10 software. The time spent outside of a 24 × 24-cm square in the center of the box was used to assess anxiety.

### Light-dark test

The mouse was placed in the corner of the light compartment (390 lux) of the light-dark box (Med Associates Inc., St. Albans, VT) that had an opening that allowed the mouse to freely move between light and dark compartments and monitored for 10 min. The dark compartment was of equal size and was covered by a black, opaque insert. Movement within the compartments was detected using infrared transmitters and receivers positioned around the chamber periphery.

### Tail suspension test

The mouse was taped by its tail to an aluminum bar attached to a transducer for 6 min and mobility measured as movement above a set threshold, as recommended (Med Associates Inc., St. Albans, VT).

### Forced swim test

The mouse was placed in a clear, plexiglass cylinder (diameter, 22 cm; height, 37 cm) filled to 5–10 cm from the top with 23–25 °C water for 6 min under red light. Movement was monitored using a camera placed in front of the cylinder and mobility/immobility time analyzed using Med Associates' software.

### Locomotor activity

Each mouse was placed in a novel cage within a metal frame equipped with infrared detectors (Micromax) and beam breaks were recorded over 2 h (Micromax, Omni-tech Electronics Inc., Columbus, OH).

### Statistical analyses

All analyses were done using the Statistical Package for the Social Sciences (GraphPad Prism version 6.00 for Windows, GraphPad Software, La Jolla, CA, www.graphpad.com). Data are expressed as mean ± standard error of the mean (SEM). For immunofluorescence quantification only sections falling between Bregma -4.36 to -4.96 were included in analysis. For behavior analyses, data points that lay outside ±2 standard deviations (SD) from the mean were excluded. Statistical analyses were performed using unpaired two-tailed t-test to compare data from wild-type to knockout. When comparing data across time or across gender, a 2-way repeated measures analysis of variance was used. Post hoc comparisons were made with Bonferroni multiple comparisons test.

### Additional file

**Additional file 1: Figure S1.** Sex Comparisons: Electrophysiological Recordings. Comparisons between the sex and Deaf1 genotype in whole-cell voltage-clamp recordings of DRN 5-HT neurons from wild-type (WT) and Deaf1<sup>-/-</sup> (KO). Time Course (left) and average peak steady-state outward current response (right) to 5-HT<sub>1A</sub> agonist 5-CT (100 nM; V<sub>m</sub> = -55 mV) are shown for WT and KO mice. a Females (n=4/genotype). b Male (n=3 or 2 for WT, KO). Data shown as mean ± SE. **Figure S2.** Sex Comparisons: Anxiety Assays. Comparisons between the sex and Deaf1 genotype (wild-type +/+ vs. knockout -/-) were made for each anxiety test to determine whether there were sex differences. Elevated Plus Maze. Time spent in the open arms or in the center, and total distance traveled were compared. Open Field Test. Time spent in the center and total distance traveled were compared. Light-Dark Test. Time spent in the light side and latency to first enter the dark zone and total distance traveled were compared. Data shown as mean ± SE; \*p<0.05; \*\*p<0.01; \*\*\*p<0.001. **Figure S3.** Locomotor Activity. Comparisons between the sex and Deaf1 genotype were made using the Locomotor Activity Test. In male and female mice the number of movements (beam breaks) is shown as a measure of locomotor activity for the Deaf1 wild-type (+/+) and knockout (-/-). Data shown as mean ± SE. (PDF 318 kb)

**Abbreviations**

<sup>125</sup>I-MPPI, 4-(2'-Methoxyphenyl)-1-[2'-(n-2"-pyridinyl)-p-[<sup>125</sup>I] iodobenzamido] ethylpiperazine); 5-CT, 5-carboxamidotryptamine; 5-HT, serotonin (5-hydroxytryptamine); DPAT, 8-hydroxy-N, N-dipropyl-2-aminotetralin; EPM, elevated plus maze test; KO, knockout; LD, light-dark test; OF, open field test; WT, wild-type

**Acknowledgements**

We thank Drs. Zoe Donaldson and Kate Nautiyal (Columbia University) for useful advice regarding autoradiography.

**Funding**

These studies were funded by CIHR grants to PRA and JCB (MOP 115061) and a grant to JCB from the Brain and Behavior Research Foundation. Funders did not contribute to the design of the study, collection, analysis, and interpretation of data or to writing the manuscript.

**Availability of data and material**

Data supporting the findings are included in the figures.

**Authors' contributions**

CL carried out the animal behavior studies, statistical analysis and drafted the manuscript. TP carried out the hypothermia studies. BLF participated in the initial backcross and hypothermia studies. SG carried out the electrophysiological studies. FVA carried out and analyzed autoradiography data. JCB participated in the design of the electrophysiological studies and their interpretation and performed the statistical analysis. DCL participated in the design of the animal behavioral studies and their interpretation. MD carried out animal husbandry and genotyping. PRA conceived of the study, and participated in its design and coordination and revised the manuscript. All authors read and approved the final manuscript.

**Competing interests**

The authors declare that they have no competing interests.

**Consent for publication**

Not applicable.

**Ethics approval and consent to participate**

The University of Ottawa Animal Care Committee approved all experimental procedures in accordance with guidelines established by the Canadian Council of Animal Care.

Received: 18 April 2016 Accepted: 23 July 2016

Published online: 03 August 2016

**References**

- Khawaja X. Quantitative autoradiographic characterisation of the binding of [<sup>3</sup>H] WAY-100635, a selective 5-HT<sub>1A</sub> receptor antagonist. *Brain Res.* 1995; 673:217–25.
- Hall H, Lundkvist C, Halldin C, Farde L, Pike VW, McCarron JA, Fletcher A, Cliffe IA, Barf T, Wikstrom H, et al. Autoradiographic localization of 5-HT<sub>1A</sub> receptors in the post-mortem human brain using [<sup>3</sup>H] WAY-100635 and [<sup>11</sup>C] way-100635. *Brain Res.* 1997;745:96–108.
- Albert PR. Transcriptional regulation of the 5-HT<sub>1A</sub> receptor: implications for mental illness. *Philos Trans R Soc Lond B Biol Sci.* 2012;367:2402–15.
- Popova NK, Naumenko VS. 5-HT<sub>1A</sub> receptor as a key player in the brain 5-HT system. *Rev Neurosci.* 2013;24:1–14.
- Donaldson ZR, Nautiyal KM, Ahmari SE, Hen R. Genetic approaches for understanding the role of serotonin receptors in mood and behavior. *Curr Opin Neurobiol.* 2013;23:399–406.
- Garcia-Garcia AL, Newman-Tancredi A, Leonardo ED. 5-HT (1A) receptors in mood and anxiety: recent insights into autoreceptor versus heteroreceptor function. *Psychopharmacology (Berl).* 2014;231:623–36.
- Albert PR, Vahid-Ansari F, Luckhart C. Serotonin-prefrontal cortical circuitry in anxiety and depression phenotypes: pivotal role of pre- and post-synaptic 5-HT<sub>1A</sub> receptor expression. *Front Behav Neurosci.* 2014;8:199.
- Richardson-Jones JW, Craige CP, Nguyen TH, Kung HF, Gardier AM, Dranovsky A, David DJ, Guiard BP, Beck SG, Hen R, et al. Serotonin-1A autoreceptors are necessary and sufficient for the normal formation of circuits underlying innate anxiety. *J Neurosci.* 2011;31:6008–18.
- Gross C, Zhuang X, Stark K, Ramboz S, Oosting R, Kirby L, Santarelli L, Beck S, Hen R. Serotonin<sub>1A</sub> receptor acts during development to establish normal anxiety-like behaviour in the adult. *Nature.* 2002;416:396–400.
- Richardson-Jones JW, Craige CP, Guiard BP, Stephen A, Metzger KL, Kung HF, Gardier AM, Dranovsky A, David DJ, Beck SG, et al. 5-HT (1A) Autoreceptor Levels Determine Vulnerability to Stress and Response to Antidepressants. *Neuron.* 2010;65:40–52.
- Jans LA, Riedel WJ, Markus CR, Blokland A. Serotonergic vulnerability and depression: assumptions, experimental evidence and implications. *Mol Psychiatry.* 2007;12:522–43.
- Jacobsen JP, Medvedev IO, Caron MG. The 5-HT deficiency theory of depression: perspectives from a naturalistic 5-HT deficiency model, the tryptophan hydroxylase 2Arg439His knockin mouse. *Philos Trans R Soc Lond B Biol Sci.* 2012;367:2444–59.
- Northoff G. Gene, brains, and environment-genetic neuroimaging of depression. *Curr Opin Neurobiol.* 2013;23:133–42.
- Albert PR, Fiori LM. Transcriptional dys-regulation in anxiety and major depression: 5-HT<sub>1A</sub> gene promoter architecture as a therapeutic opportunity. *Curr Pharm Des.* 2014;20:3738–50.
- Michelson RJ, Collard MW, Ziemba AJ, Persinger J, Bartholomew B, Huggenvik JI. Nuclear DEAF-1-related (NUDR) protein contains a novel DNA binding domain and represses transcription of the heterogeneous nuclear ribonucleoprotein A2/B1 promoter. *J Biol Chem.* 1999;274:30510–9.
- Lemondé S, Turecki G, Bakish D, Du LS, Hrdina PD, Bown CD, Sequeira A, Kushwaha N, Morris SJ, Basak A, et al. Impaired repression at a 5-hydroxytryptamine 1A receptor gene polymorphism associated with major depression and suicide. *J Neurosci.* 2003;23:8788–99.
- Parsey RV, Ogden RT, Miller JM, Tin A, Hesselgrave N, Goldstein E, Mikhno A, Milak M, Zanderigo F, Sullivan GM, et al. Higher serotonin 1A binding in a second major depression cohort: modeling and reference region considerations. *Biol Psychiatry.* 2010;68:170–8.
- Le François B, Czesak M, Steubl D, Albert PR. Transcriptional regulation at a HTR1A polymorphism associated with mental illness. *Neuropharmacology.* 2008;55:977–85.
- Savitz J, Lucki I, Drevets WC. 5-HT (1A) receptor function in major depressive disorder. *Prog Neurobiol.* 2009;88:17–31.
- Artigas F. Serotonin receptors involved in antidepressant effects. *Pharmacol Ther.* 2013;137:119–31.
- Czesak M, Le Francois B, Millar AM, Deria M, Daigle M, Visvader JE, Anisman H, Albert PR. Increased serotonin-1A (5-HT<sub>1A</sub>) autoreceptor expression and reduced raphe serotonin levels in Deformed Epidermal Autoregulatory Factor-1 (Deaf-1) gene knock-out mice. *J Biol Chem.* 2012;287:6615–27.
- Vulto-van Silfhout AT, Rajamanickam S, Jensik PJ, Vergult S, De Rocker N, Newhall KJ, Raghavan R, Reardon SN, Jarrett K, McIntyre T, et al. Mutations affecting the SAND domain of DEAF1 cause intellectual disability with severe speech impairment and behavioral problems. *Am J Hum Genet.* 2014;94:649–61.
- Donaldson ZR, Piel DA, Santos TL, Richardson-Jones J, Leonardo ED, Beck SG, Champagne FA, Hen R. Developmental effects of serotonin 1A autoreceptors on anxiety and social behavior. *Neuropsychopharmacology.* 2014;39:291–302.
- Czesak M, Lemondé S, Peterson EA, Rogava A, Albert PR. Cell-specific repressor or enhancer activities of Deaf-1 at a serotonin 1A receptor gene polymorphism. *J Neurosci.* 2006;26:1864–71.
- Kishi T, Yoshimura R, Fukuo Y, Okochi T, Matsunaga S, Umene-Nakano W, Nakamura J, Serretti A, Correll CU, Kane JM, et al. The serotonin 1A receptor gene confer susceptibility to mood disorders: results from an extended meta-analysis of patients with major depression and bipolar disorder. *Eur Arch Psychiatry Clin Neurosci.* 2013;263:105–18.
- Hesselgrave N, Parsey RV. Imaging the serotonin 1A receptor using [<sup>11</sup>C] WAY100635 in healthy controls and major depression. *Philos Trans R Soc Lond B Biol Sci.* 2013;368:20120004.
- Donaldson ZR, Le Francois B, Santos TL, Almlí LM, Boldrini M, Champagne FA, Arango V, Mann JJ, Stockmeier CA, Galfalvy H, et al. The functional serotonin 1a receptor promoter polymorphism, rs6295, is associated with psychiatric illness and differences in transcription. *Transl Psychiatry.* 2016;6, e746.
- Bert B, Fink H, Hortnagl H, Veh RW, Davies B, Theuring F, Kusserow H. Mice over-expressing the 5-HT (1A) receptor in cortex and dentate gyrus display exaggerated locomotor and hypothermic response to 8-OH-DPAT. *Behav Brain Res.* 2006;167:328–41.

29. Fairchild G, Leitch MM, Ingram CD. Acute and chronic effects of corticosterone on 5-HT1A receptor-mediated autoinhibition in the rat dorsal raphe nucleus. *Neuropharmacology*. 2003;45:925–34.
30. Cornelisse LN, van der Harst JE, Lodder JC, Baarendse PJ, Timmerman A, Mansvelde HD, Spruijt BM, Brussaard AB. Reduced 5-HT1A- and GABAB receptor function in dorsal raphe neurons upon chronic fluoxetine treatment of socially stressed rats. *J Neurophysiol*. 2007;98:196–204.
31. Llamas N, Bruzos-Cidon C, Rodríguez JJ, Ugedo L, Torrecilla M. Deletion of GIRK2 Subunit of GIRK Channels Alters the 5-HT1A Receptor-Mediated Signaling and Results in a Depression-Resistant Behavior. *Int J Neuropsychopharmacol*. 2015;18:pyv051.
32. Zhang X, Beaulieu JM, Sotnikova TD, Gainetdinov RR, Caron MG. Tryptophan hydroxylase-2 controls brain serotonin synthesis. *Science*. 2004;305:217.
33. Jacobsen JP, Siesser WB, Sachs BD, Peterson S, Cools MJ, Setola V, Folgering JH, Flik G, Caron MG. Deficient serotonin neurotransmission and depression-like serotonin biomarker alterations in tryptophan hydroxylase 2 (Tph2) loss-of-function mice. *Mol Psychiatry*. 2012;17:694–704.
34. Mosenko V, Matthes S, Hirth N, Beis D, Flinders M, Bader M, Hansson AC, Alenina N. Adaptive changes in serotonin metabolism preserve normal behavior in mice with reduced TPH2 activity. *Neuropharmacology*. 2014;85:73–80.
35. Li Q, Wichems C, Heils A, Lesch KP, Murphy DL. Reduction in the density and expression, but not G-protein coupling, of serotonin receptors (5-HT1A) in 5-HT transporter knock-out mice: gender and brain region differences. *J Neurosci*. 2000;20:7888–95.
36. Bouali S, Evrard A, Chastanet M, Lesch KP, Hamon M, Adrien J. Sex hormone-dependent desensitization of 5-HT1A autoreceptors in knockout mice deficient in the 5-HT transporter. *Eur J Neurosci*. 2003;18:2203–12.
37. Loucif AJ, Bonnavion P, Macri B, Golmard JL, Boni C, Melfort M, Leonard G, Lesch KP, Adrien J, Jacquin TD. Gender-dependent regulation of G-protein-gated inwardly rectifying potassium current in dorsal raphe neurons in knock-out mice devoid of the 5-hydroxytryptamine transporter. *J Neurobiol*. 2006;66:1475–88.
38. Gleason G, Liu B, Bruening S, Zupan B, Auerbach A, Mark W, Oh JE, Gal-Toth J, Lee F, Toth M. The serotonin1A receptor gene as a genetic and prenatal maternal environmental factor in anxiety. *Proc Natl Acad Sci U S A*. 2010;107:7592–7.
39. Neff CD, Abkevich V, Packer JC, Chen Y, Potter J, Riley R, Davenport C, DeGrado WJ, Jammulapati S, Bhatena A, et al. Evidence for HTR1A and LHPP as interacting genetic risk factors in major depression. *Mol Psychiatry*. 2009;14:621–30.
40. Converge-consortium. Sparse whole-genome sequencing identifies two loci for major depressive disorder. *Nature*. 2015;523:588–91.
41. Attwood PV, Wieland T. Nucleoside diphosphate kinase as protein histidine kinase. *Naunyn-Schmiedeberg Arch Pharmacol*. 2015;388:153–60.
42. Kaufman J, Sullivan GM, Yang J, Ogden RT, Miller JM, Oquendo MA, Mann JJ, Parsey RV, DeLorenzo C. Quantification of the Serotonin 1A Receptor Using PET: Identification of a Potential Biomarker of Major Depression in Males. *Neuropsychopharmacology*. 2015;40:1692–9.
43. Belzung C, Le Pape G. Comparison of different behavioral test situations used in psychopharmacology for measurement of anxiety. *Physiol Behav*. 1994;56:623–8.
44. Jacobsen KX, Vanderluit J, Slack RS, Albert PR. HES1 regulates 5-HT1A receptor gene transcription at a functional polymorphism: Essential role in developmental expression. *Mol Cell Neurosci*. 2008;38:349–58.
45. Geddes SD, Assadzada S, Sokolovski A, Bergeron R, Haj-Dahmane S, Béique JC. Time-dependent modulation of glutamate synapses onto 5-HT neurons by antidepressant treatment. *Neuropharmacology*. 2015;95:130–43.

Submit your next manuscript to BioMed Central and we will help you at every step:

- We accept pre-submission inquiries
- Our selector tool helps you to find the most relevant journal
- We provide round the clock customer support
- Convenient online submission
- Thorough peer review
- Inclusion in PubMed and all major indexing services
- Maximum visibility for your research

Submit your manuscript at  
[www.biomedcentral.com/submit](http://www.biomedcentral.com/submit)

