

SYSTEMATIC REVIEW

Open Access



Influence of the geometric and material properties of lumbar endplate on lumbar interbody fusion failure: a systematic review

Yihang Yu¹ , Dale L. Robinson¹, David C. Ackland¹, Yi Yang² and Peter Vee Sin Lee^{1*}

Abstract

Background: Lumbar interbody fusion (LIF) is an established surgical intervention for patients with leg and back pain secondary to disc herniation or degeneration. Interbody fusion involves removal of the herniated or degenerated disc and insertion of interbody devices with bone grafts into the remaining cavity. Extensive research has been conducted on operative complications such as a failure of fusion or non-union of the vertebral bodies. Multiple factors including surgical, implant, and patient factors influencing the rate of complications have been identified. Patient factors include age, sex, osteoporosis, and patient anatomy. Complications can also be influenced by the interbody cage design. The geometry of the bony endplates as well as their corresponding material properties guides the design of interbody cages, which vary considerably across patients with spinal disorders. However, studies on the effects of such variations on the rate of complications are limited. Therefore, this study aimed to perform a systematic review of lumbar endplate geometry and material property factors in LIF failure.

Methods: Search keywords included 'factor/cause for spinal fusion failure/cage subsidence/cage migration/non-union', 'lumbar', and 'interbody' in electronic databases PubMed and Scopus with no limits on year of publication.

Results: In total, 1341 articles were reviewed, and 29 articles were deemed suitable for inclusion. Adverse events after LIF, such as cage subsidence, cage migration, and non-union, resulted in fusion failure; hence, risk factors for adverse events after LIF, notably those associated with lumbar endplate geometry and material properties, were also associated with fusion failure. Those risk factors were associated with shape, concavity, bone mineral density and stiffness of endplate, segmental disc angle, and intervertebral disc height.

Conclusions: This review demonstrated that decreased contact areas between the cage and endplate, thin and weak bony endplate as well as spinal diseases such as spondylolisthesis and osteoporosis are important causes of adverse events after LIF. These findings will facilitate the selection and design of LIF cages, including customised implants based on patient endplate properties.

Keywords: Lumbar interbody fusion, Lumbar endplate, Interbody cage, Cage subsidence, Cage migration, Non-union

Background

Lumbar degenerative disc disease (DDD) is an intervertebral disc pathology characterised by the deterioration or breakdown of one or more discs between the lumbar vertebrae. It is strongly associated with lower back pain in the younger population (younger than 50 years) [1].

*Correspondence: pvlee@unimelb.edu.au

¹ Department of Biomedical Engineering, University of Melbourne, Parkville, VIC 3010, Australia

Full list of author information is available at the end of the article



© The Author(s) 2022. **Open Access** This article is licensed under a Creative Commons Attribution 4.0 International License, which permits use, sharing, adaptation, distribution and reproduction in any medium or format, as long as you give appropriate credit to the original author(s) and the source, provide a link to the Creative Commons licence, and indicate if changes were made. The images or other third party material in this article are included in the article's Creative Commons licence, unless indicated otherwise in a credit line to the material. If material is not included in the article's Creative Commons licence and your intended use is not permitted by statutory regulation or exceeds the permitted use, you will need to obtain permission directly from the copyright holder. To view a copy of this licence, visit <http://creativecommons.org/licenses/by/4.0/>. The Creative Commons Public Domain Dedication waiver (<http://creativecommons.org/publicdomain/zero/1.0/>) applies to the data made available in this article, unless otherwise stated in a credit line to the data.

In disc degeneration cases associated with leg and radicular pain, the 'gold standard' for surgical treatment of severe lower back pain caused by DDD is lumbar interbody fusion (LIF), wherein the disc is replaced by one or more interbody cages and bone grafts to support the intervertebral space and enable fusion between adjacent vertebrae [2].

Despite the widespread acceptance of LIF, fusion is not achieved in all patients. A systematic review has shown that non-fusion rates for LIF at L5/S1 level ranged from 0.2% to 21.0% in 22 years (from 1992 to 2014) [3]. Although symptomatic patients with failed fusion can undergo revision surgery [4, 5], the complication rates of revision surgeries are significantly higher [6, 7].

The interbody cage acts as a spacer between the affected vertebrae, and it plays a crucial role in LIF to restore disc height and promote bony ingrowth [8]. Titanium alloy and polyetheretherketone (PEEK) are the most common materials used in interbody cages, where titanium alloy can stimulate bony ingrowth and PEEK material can mimic the density and stiffness of vertebrae [9, 10]. Interbody cages are available in varying sizes and shapes to fit the intervertebral space, including cylindrical, rectangular, wedge-shaped, or banana-shaped [11, 12]. The cage position on the endplate is another LIF variable, and bilateral, unilateral, and anterior cage positioning are commonly used [13]. Multiple factors are considered in designing an intervertebral cage, such as geometry, material properties, ease and safety of intraoperative insertion. The material, shape, and size of interbody cages have been specifically developed to allow for an optimum fit between the vertebrae within the previous disc space and to promote bone growth across the disc space leading to fusion. The cages aim to conform to the geometry and material properties of the bony endplate for its insertion and fitting into different positions of the intervertebral space. Therefore, understanding variations in geometric and material properties across the endplates of the lumbar spine is essential for optimum spinal interbody cage design.

In the asymptomatic spine, the surfaces of lumbar endplates are generally concave, with the cranial endplate relative to the disc exhibiting greater concavity compared with the caudal endplate [14]. The endplate concavity increases from L1 to L5, and the greatest area of concavity of each endplate is located in the middle or posterior region of the vertebral body [15]. For each intervertebral disc, compared to the cranial endplate, the caudal endplate has a larger surface area, and the surface area is larger in males and mostly proportional to the intervertebral space [14, 16, 17]. The disc angle (lordotic angle) between two adjacent endplate surfaces for the standing posture increases toward the lower level of vertebrae

[15]. This can affect the inclination of the interbody cages used at the lumbar level.

The material properties of the lumbar endplate, specifically its bone mineral density (BMD), vary along the spine, wherein cranial endplates of intervertebral spaces usually have a higher BMD and are stronger and stiffer compared with the caudal endplates [18, 19]. These spatial differences in endplate properties have been attributed to the greater rates of vertebral fractures at the caudal endplates [20–22]. Furthermore, the peripheral regions of lumbar endplate surfaces are of greater strength compared with the central areas [19, 23], which is in accordance with the respective thickness between these areas [24]. Considerable variations in endplate geometry and material properties also exist in terms of individuals, sex, ageing, and degeneration [15, 16]. For example, endplate thickness and surface area correlate with age [15, 16]. Furthermore, severe intervertebral disc degeneration significantly decreases the endplate concavity and endplate area [16].

Previous research regarding LIF failure suggests that outcomes of fusion surgery are related to spinal segment properties, device properties, and surgeon experience [25]. However, to date, to the best of our knowledge, no study has reviewed the endplate-related risk factors for fusion failure. To bridge this gap in knowledge, this systematic review aimed to identify and compare the lumbar endplate geometric and material factors that contribute to LIF failure to help address implant-related complications in the development of customised spinal implants.

Methods

Search strategy

A systematic review was performed in the PubMed and Scopus databases to identify studies that describe influence of lumbar endplate-related factors on spinal fusion failures or complications. A search strategy was used to minimise possible missing of relevant studies:

(factor for) OR (cause for) AND (spinal fusion failure) OR (cage migration) OR (cage subsidence) OR (non-union) AND (lumbar) AND (interbody).

Only English language articles were searched, and there were no restrictions on the year of publication.

Selection strategy

The search and selection process ended on 14/09/2021, and the whole process was conducted in accordance with the Preferred Reporting Items for Systematic Reviews and Meta-Analyses (PRISMA) statement [26]. The Sample, Phenomenon of Interest, Design, Evaluation, and Research Type (SPIDER) tool was used to structure the research question, where sample (S) is the patients who underwent LIF, phenomenon of interest (PI) is fusion

failure, design (D) is observational studies or survey, evaluation (E) is the influence of the geometric and material properties of lumbar endplate, and research type (R) is qualitative or quantitative or mixed [27]. Selection process was done in the Covidence Systematic Review Software [28] to retain records for each step. Selection criteria were applied to the resultant articles after removing duplicates (Table 1). The inclusion criteria were based on surgery type, implant involvement, surgery outcome category, and relevance of factors. The exclusion criteria were also applied to the resultant articles and were based on the study type (e.g. animal studies and computational

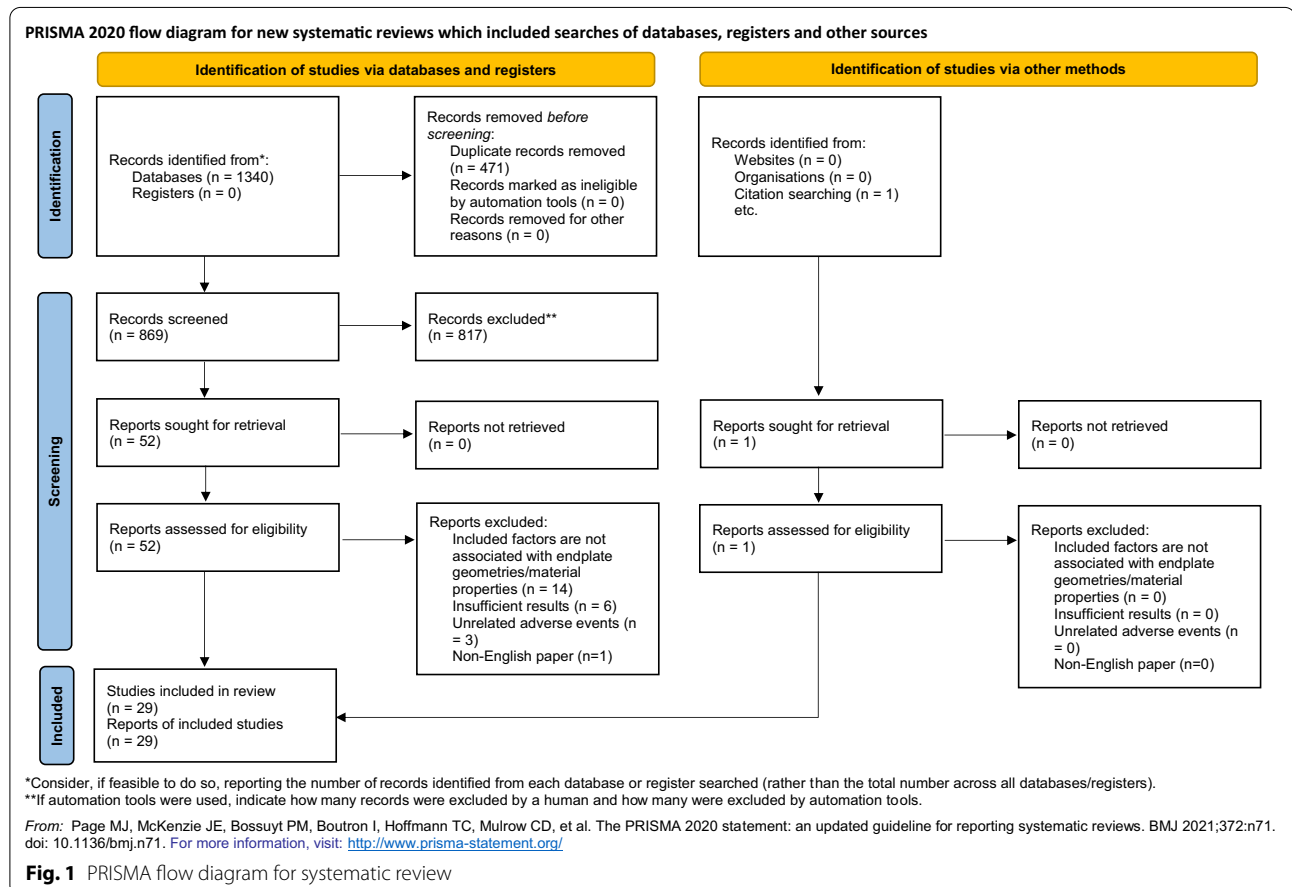
studies were excluded). Detailed reasons for setting up these exclusion criteria are provided in Additional file 1. The references of the selected articles were subsequently screened to include more articles in this systematic review. The PRISMA flow diagram is provided in Fig. 1, and the details of PRISMA checklist are provided in Additional file 2.

Quality assessment

Since most of the selected articles were observational studies and the results belonged to both randomised or non-randomised studies, two well-established quality

Table 1 Details of selection criteria

Inclusion criteria	Exclusion criteria
Lumbar interbody fusion	Animal studies
Interbody cage involved	Finite element (computational) studies
Adverse events after fusion	Rare case studies
Risk factors for fusion failure/adverse events	Previous systematic review/meta-analysis
Factors associated with endplate geometries/material properties	



assessment checklists appropriate for these study types were considered: the Strengthening the Reporting of Observational Studies in Epidemiology (STROBE) statement checklist [29] and the Downs and Black checklist [30]. Based on their principles, a customised checklist for assessing the quality of the included articles was created. There were 12 requirements in this checklist focusing on the background, aims, methodology, results, discussion, and limitations of the evaluated articles. Each requirement was graded as clearly reported, partially reported, or not reported, and was associated with a score of 2, 1, or 0, respectively, which was subsequently added to the total. The quality assessment was performed by two reviewers independently, and any disagreement of opinion was resolved by discussion. Articles with scores ≥ 20 were defined as high-quality studies, those with scores ranging from 14 to 20 were defined as moderate-quality studies, and those with scores less than 14 were defined as low-quality studies. The customised checklist is provided in Additional file 1: Table S2.

Data analysis

The included studies were divided into several groups based on the adverse events. Risk factors for adverse events in these studies were grouped based on demographics, diagnosis, anatomical and surgical factors, and cage specifications. Although the review aimed to identify risk factors related to endplate geometric and material properties, risk factors other than those included in the resultant studies were also analysed.

Results

Included articles

After removing duplicates, 869 articles were identified in the initial search. There were 52 articles deemed eligible after screening the title and abstract, of which 28 were included after full-text assessment based on the selection criteria [20, 25, 31–56]. The key reasons for excluding 24 articles [57–80] during the full-text screening were irrelevant risk factors, insufficient results, unrelated adverse events, and non-English paper. Reviewing citations in the 28 studies provided an additional article [81]. Twenty-nine studies were finally included in the current systematic review. The majority of the included articles were of moderate quality ($n=22$), whereas five of high quality, and two of low quality (Additional file 1: Figure S1). A summary of the information of the included studies, such as the authors with year of publication, sample size, surgery type, adverse event categories, risk factors associated with endplate geometry or material property, and quality scores for the included articles is provided in Table 2. Details of quality assessment and available

data of included articles were attached as additional files (Additional files 3, 4).

LIF failure

LIF failure involves loss of device fixation and non-union at the fusion site. Loss of fixation is associated with other adverse events such as implant subsidence and changes in implant position [82].

Adverse events after LIF were grouped into four general types—cage subsidence, cage migration, combined cage migration with subsidence, and non-union at the fusion level, and the incidence of these events reported by the included studies was recorded. The sample size and incidence rates for these adverse events are listed in Table 3.

Cage subsidence

There were 15 studies that discussed cage subsidence after LIF [20, 31, 32, 34, 36, 37, 40, 44, 45, 49–53, 55], with qualities of moderate ($n=11$) and high ($n=4$). For the 2,558 cages pooled across these studies, 705 cages had subsidence (27.6%). Thresholds for identification of subsidence varied between 2 and 4 mm across studies [20, 31, 34, 37, 40, 49, 51, 53, 55]. Three studies classified subsidence into four grades based on the loss of disc height after LIF (Grade 0: a loss of 0–24% in disc height; Grade I: 25–49%; Grade II: 50–74%; Grade III: 75–100%), with a loss in disc height of 24% indicative of considerable cage subsidence [36, 44, 52].

Cage migration

There were 12 articles that analysed posterior cage migration after LIF (qualities: low/moderate/high, 2/9/1) [25, 33, 35, 38, 41–43, 47, 48, 54, 56, 81]. Of the 4995 patients included in these studies, 156 were identified with posterior migration (3.1%). Two alternative methods were used to identify posterior cage migration: when the posterior cage migration exceeded a 2-mm or 3-mm threshold [35, 43, 48] or when the cage moved beyond the posterior wall of adjacent vertebrae, which is also termed cage retropulsion [25, 33, 38, 41, 42, 47, 56, 81].

Non-union at the fusion level

The third adverse event after LIF discussed in this review was non-union between the vertebra adjacent to the cage. Only two studies, both of moderate quality [39, 46], assessed non-union after LIF, wherein the average non-union rate was 10.0% for 130 patients postoperatively after more than 2 years [39, 46]. These studies considered at least one of the following criteria to identify non-union: (1) any relative movement at the fusion site in lateral (flexion and extension) radiographs, (2) any visible gap between the endplate and spinal cage, and (3) absence of trabecular bone bridging. However, to the best

Table 2 Details of included articles

Authors	Sample size (patient number)	Surgery type	Adverse event category	Risk factors (associated with endplate)	Quality score
Abbushi et al. [31]	40 (80 cages)	PLIF	Cage subsidence	Cage position, cage shape	14
Amorim-Barbosa et al. [32]	165 (208 cages)	PLIF/TLIF	Cage subsidence	BMD, cage position	19
Aoki et al. [33]	125 (144 levels)	TLIF	Cage migration	Cage shape, size, disc height	17
Beutler and Peppelman [20]	104 (140 levels)	ALIF	Cage subsidence	Fusion level, cage position	15
Cho et al. [34]	86	PLIF	Cage subsidence, screw loosening	Osteoporosis	19
Duncan and Bailey [81]	102	TLIF	Cage migration	Screw fixation	17
Hu et al. [25]	953 (1559 cages)	TLIF	Cage migration	Cage position, disc height, fusion level, multi-level fusion	19
Jin et al. [35]	75	TLIF	Cage migration	Advanced age	16
Jones et al. [36]	347 (567 levels)	LLIF	Cage subsidence	BMD	21
Kim et al. [37]	104 (122 cages)	MITLIF	Cage subsidence	Fusion level, cage position	15
Kimura et al. [38]	1070 (1433 cages)	PLIF	Cage retropulsion	Fusion level, multi-level fusion, disc height, endplate shape	14
Konomi et al. [39]	78 (88 levels)	PLIF	Non-union	Advanced age	14
Le et al. [40]	140 (238 levels)	XLIF	Cage subsidence	Cage size	16
Lee et al. [41]	744 (1229 levels)	PLIF/TLIF	Cage retropulsion	Endplate shape, loosening of fixation	16
Li et al. [42]	286	PLIF/TLIF	Cage migration	Cage size, spondylolisthesis	14
Liu et al. [43]	215	TLIF	Cage migration	Cage shape, screw fixation	18
Marchi et al. [44]	74 (98 levels)	LLIF	Cage subsidence	Cage size	18
Mi et al. [45]	242	TLIF	Cage subsidence	Hounsfield units (BMD)	16
Okuyama et al. [46]	52	PLIF	Non-union	BMD	14
Pan et al. [47]	8	PLIF/TLIF	Cage retropulsion	Cage shape, fusion level	13
Park et al. [48]	784 (881 levels)	TLIF	Cage migration, subsidence, retropulsion	Osteoporosis, endplate shape, cage position	20
Singhatanadgige et al. [49]	114 (135 levels)	MITLIF	Cage subsidence	Cage position	18
Tempel et al. [50]	80	LLIF	Cage subsidence	BMD	14
Tohmeh et al. [51]	140 (223 levels)	XLIF	Cage subsidence	Cage size	21
Xi et al. [52]	68	LLIF	Cage subsidence	Hounsfield units (BMD)	21
Yao et al. [53]	96 (126 levels)	MITLIF	Cage subsidence	BMD, disc height	20
Zhao et al. [54]	512	TLIF	Cage migration	Cage size, shape, multi-level fusion	11
Zhou et al. [55]	145	TLIF	Cage subsidence	Irregular endplate shape	19
Zhou et al. [56]	121 (176 levels)	TLIF	Cage retropulsion	Irregular endplate shape, cage position	19

Surgery types in this table including anterior lumbar interbody fusion (ALIF), posterior lumbar interbody fusion (PLIF), transforaminal lumbar interbody fusion (TLIF), minimally invasive transforaminal lumbar interbody fusion (MITLIF), lateral lumbar interbody fusion (LLIF), and extreme lateral lumbar interbody fusion (XLIF)

of our knowledge, there is no consensus on the definition of non-union in the literature. For movement on lateral radiographs, Konomi et al. [39] only considered cases with lateral movements larger than 3°, whereas Okuyama et al. [46] included cases with any lateral movement.

Combined cage subsidence and migration

The only study to evaluate multiple adverse events following LIF was reported by Park et al. [48], who considered cases of migration with subsidence. This high-quality

study evaluated 784 patients and found that this combined adverse event occurred in 36 patients (4.6%).

Demographics and diagnosis

All included studies provided the age distribution, sixteen of them recorded sex distribution [25, 32, 34, 38, 41, 42, 44, 47–50, 52, 53, 55, 56, 81], seven included body mass index (BMI) [32, 41, 44, 49, 53, 55, 56], and three accounted for patients with osteoporosis [34, 41, 48]. The details are listed in Table 4.

Table 3 Summary of general adverse events after LIF along with number of studies, sample size, and complication rates

Adverse event	Number of studies	Sample size (patients)	Incidence rate (%)
Cage subsidence	15	2558	27.6
Cage migration	12	4995	3.1
Combined cage subsidence and migration	1	784	4.6
Non-union	2	130	10.0

The incidence rate for cage subsidence was calculated from cage number because of the incomplete data for patient number involved with cage subsidence

Table 4 Patient demographics for included studies

Demographics	Patient number	Mean value/distribution
Age	7070	60.0 years (18.0–86.0 years)
Sex	4896	58.6%/41.4% (female/male)
BMI	1459	24.9 kg/m ² (20.8–32.0 kg/m ²)
Osteoporosis	1614	11.0%/89.0% (osteoporosis/non-osteoporosis)

There were 22 studies provided pre-operative diagnosis of involved patients, which included spondylolisthesis (degenerative, isthmic, or spondylolytic), disc herniation, DDD, kyphosis, scoliosis, spinal canal stenosis, discogenic low back pain, and other reasons such as revision

[20, 25, 31–35, 37–39, 42–44, 46, 48, 51–56, 81]. The corresponding patient distributions for these diagnoses are plotted in Fig. 2. The dominant condition associated with fusion surgery was degenerative spondylolisthesis (40.9%), followed by lumbar spinal canal stenosis (31.3%). More detailed demographics and diagnosis are summarised in Additional file 1.

Anatomical and surgical factors

Fusion level and multi-level fusion

Details of fusion levels were provided in 21 of the 29 included articles, describing 7,355 cages [20, 25, 31, 32, 34–39, 41–43, 45, 47, 49, 51–53, 55, 56]. Qualities ranged from low ($n=1$), moderate ($n=16$), and high ($n=4$). The distribution of fusion levels was as follows: L1/L2: 90 (1.2%); L2/L3, 426 (5.8%); L3/L4: 1,261 (17.1%); L4/L5: 3,852 (52.4%); and L5/S1: 1,681 (22.9%). Cage subsidence was identified in 620 cages, but the fusion level was only provided for 289 of them [20, 32, 45, 49, 52, 53, 55], with the following distribution: L1/L2, 2 (0.7%); L2/L3, 8 (2.8%); L3/L4, 35 (12.1%); L4/L5, 184 (63.7%); and L5/S1, 60 (20.8%). According to these seven studies, the subsidence rates for cages at distal levels (L4/L5 and L5/S1) ranged from 7.4 to 62.2%, and the total subsidence rate was 27.7%. Similarly, cage migration was noted in 116 cages, but the distribution of fusion levels was only provided for 103 of them: L2/L3, 2 (1.9%); L3/L4, 7 (6.8%); L4/L5, 56 (54.4%); and L5/S1, 38 (36.9%) [25, 38,

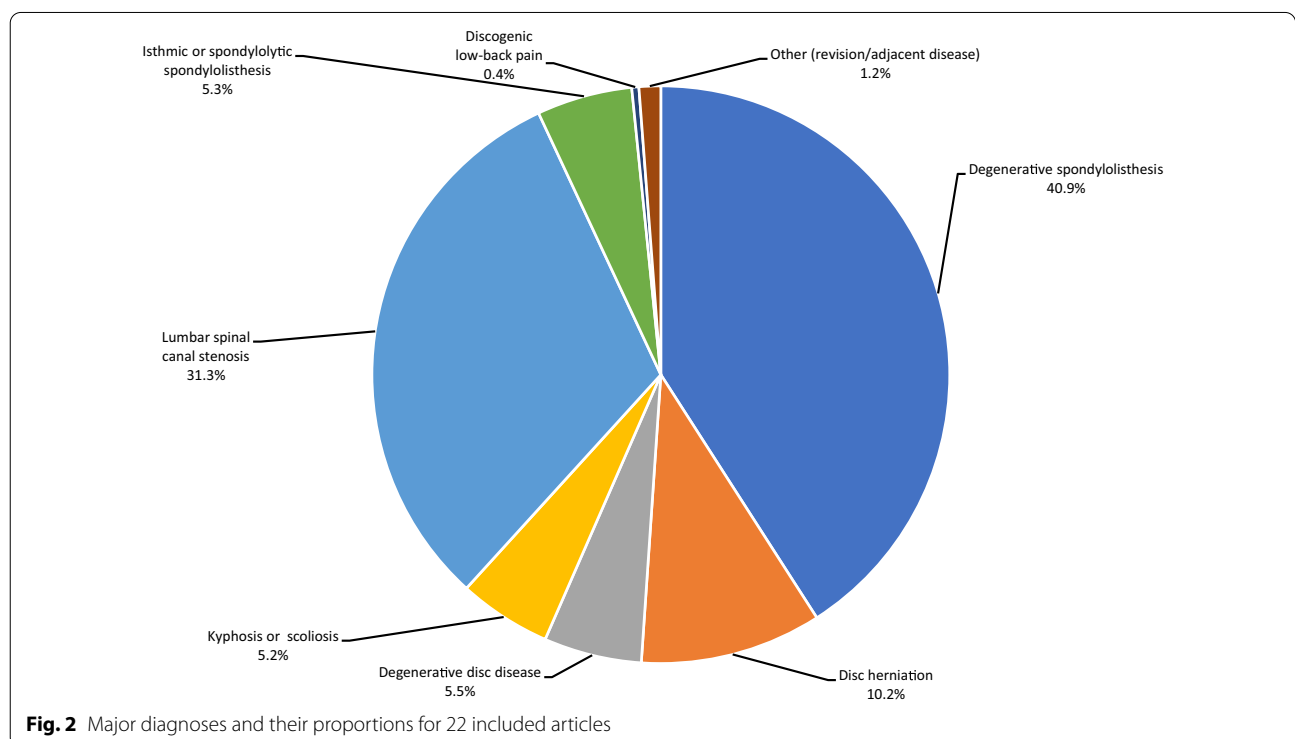


Fig. 2 Major diagnoses and their proportions for 22 included articles

41, 42, 47, 56]. For fusion at distal levels, cage migration rates from these five studies ranged from 0.7 to 18.2%, and the total migration rate was 2.4%. Three studies reported fusion surgery at distal levels as a risk factor for cage subsidence or migration after LIF [20, 37, 47] and found higher adverse event rates for fusion at distal levels ($p < 0.05$ or odds ratio > 1).

Thirteen studies provided information regarding single- and multi-level fusion (fusion level ≥ 2) for all patients and patients with adverse events [20, 31, 33, 34, 40–42, 47–49, 53, 54, 56]. Among the 3181 patients in these studies, 2311 had single-level fusion (72.7%) and 870 had multi-level fusion (27.3%). The cage subsidence rates for single-level fusion and multi-level fusion were 15.5% and 26.2%, respectively, and the posterior cage migration rates were 4.9% and 5.3%, respectively. Although the cage subsidence rate of multi-level fusion was higher than that of single-level fusion, to the best of our knowledge, no study has shown the significance of multi-level fusion on cage subsidence. Three studies mentioned multi-level fusion as a significant risk factor ($p < 0.05$) for posterior cage migration after LIF [25, 38, 54].

BMD

Six studies evaluated the magnitude of BMD in patients with and without adverse events [34, 46, 48–50, 53], of which four were of moderate quality, whereas the remaining studies were of high quality [48, 53]. Two of these studies also accounted for osteoporosis (T-score < -2.5) [34, 48]; Cho et al. [34] included 86 patients and reported that the cage subsidence rates after LIF were significantly higher for osteoporotic patients than for non-osteoporotic patients (65.4% and 17.6%, respectively; $p < 0.001$). Park et al. [48] found that the adverse event rates of cage migration cases and combined cage subsidence and migration cases were 9.7% and 18.1% for osteoporotic patients (72), respectively, whereas the rates were 2.6% and 4.6% for all patients ($n = 784$) in the study. Yao et al. [53] evaluated 126 cages used for LIF, the mean T-score for 43 cages with subsidence was -1.8 , whereas that for 83 cages without subsidence was -1.1 . Singhatanadgige et al. [49] included 135 cages used for TLIF, the mean T-score for 80 cages with subsidence was -1.3 , whereas that for 55 cages without subsidence was -1.1 . Tempel et al. [50] evaluated 80 patients with LIF, wherein 39 (48.8%) had decreased BMD (T-score < -1), and for 23 patients with cage subsidence, 18 (78.3%) had decreased BMD. Okuyama et al. [46] evaluated 52 patients with LIF, with a mean BMD of 0.879 g/cm^2 . For 12 patients with non-union or undetermined union, the mean BMD was 0.674 g/cm^2 and 0.710 g/cm^2 , respectively. The findings of these studies identified a trend of higher subsidence rates in patients with decreased BMD and osteoporosis.

In addition, one study with moderate quality mentioned patients with cage subsidence had significantly low Hounsfield unit (HU) of their CT scans (113.4 ± 10.5 , $p = 0.0075$) [45], and low HU of CT scans was associated with low BMD. Xi et al. [52] held the same point in their study because the mean HU of patients who experienced cage subsidence was 20.8% lower than the mean HU of patients without cage subsidence.

Pre-operative disc height

Six studies involving cage migration mentioned the disc height of the involved patients [25, 33, 38, 41, 42, 56], which were of moderate quality. Each study measured the disc height before and after fusion surgery, and some studies measured both anterior and posterior disc height. Patients with and without migration had similar average pre-operative disc height, whereas Yao et al. [53] found that shorter disc height was statistically significant for cage subsidence ($p = 0.002$).

Disc morphology

Five included studies evaluated pear-shaped/irregular disc as a risk factor for cage migration and cage subsidence after LIF [38, 41, 48, 55, 56] (Fig. 3), with qualities of moderate ($n = 4$) and high ($n = 1$). For 96 cages that underwent migration or subsidence in these studies, 26 (27.1%) were inserted into a pear-shaped/irregular disc, and 165 (6.6%) were inserted into pear-shaped/irregular disc for patients without cage subsidence or migration. Regarding the incidence of combined adverse events (cage migration + cage subsidence), the third study reported eight pear-shaped discs (22.2%) at all levels with combined adverse events, and the rate dropped to 6.2% for all levels without adverse events after LIF.

Lordosis

Five studies, all of moderate quality [32, 39, 44, 55, 56], reported pre-operative segmental lordosis in patients

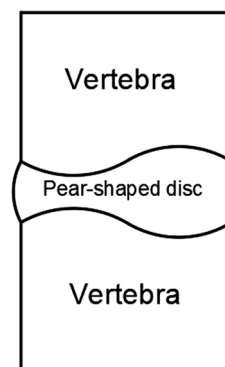


Fig. 3 Sketch of pear-shaped disc (left side is anterior direction)

who received LIF. Marchi et al. [44] recorded the pre-operative segmental lordosis of 74 patients who underwent LIF, wherein the mean lordosis for patients who experienced obvious cage subsidence and for patients experiencing only slight subsidence or no subsidence was 49.1° and 47.6°, respectively. Four studies reported small differences (maximum difference 0.6°) between pre-operative segmental lordosis in patients with and without adverse events after LIF [32, 39, 55, 56].

Range of motion

For the pre-operative range of motion (ROM) of the lumbar segments, two studies, one of moderate and high quality each, reported a larger average ROM for patients with adverse events than patients without adverse events (migration: 10.7° vs. 5.6°; 9.6° vs. 7.7°; migration + subsidence: 8.1° vs. 7.7°) [38, 48]. However, two other studies, both of moderate quality, recorded slightly lower average ROM for patients with cage migration than those without cage migration (7.3° vs. 8.8° and 7.6° vs. 8.1°, respectively) [33, 56].

Screw fixation

Two moderate-quality studies have evaluated the influence of unilateral and bilateral screw fixation on cage migration [43, 81]. In these studies, 155 patients underwent unilateral pedicle screw fixation and 162 patients underwent bilateral pedicle screw fixation, with migration rates of 12.3% and 3.7%, respectively. Both these studies found that unilateral screw fixation was a significant risk factor for cage migration ($p < 0.05$).

Cage specifications

Cage material

All articles except four [41, 42, 45, 50] mentioned the material details of the spinal cages involved in their

studies (qualities: low/moderate/high, 2/18/5). Of the 13 studies that evaluated cage subsidence, there were 2236 cages and the proportions of cage material were as follows: titanium, 174 (7.8%); porous titanium, 46 (2.1%); and PEEK, 2016 (90.2%) [20, 31, 32, 34, 36, 37, 40, 44, 49, 51–53, 55]. There were 678 subsided cages with the following materials: titanium, 18 (2.7%); porous titanium, 20 (2.9%); and PEEK, 640 (94.4%). Of the 10 studies focused on posterior cage migration after LIF, there were 5,244 cages and the proportions of cage material were as follows: titanium, 910 (17.4%); porous titanium, 5 (0.1%); PEEK, 4,312 (82.2%); and carbon, 17 (0.3%) [25, 33, 35, 38, 43, 47, 48, 54, 56, 81]. There were 130 cages that underwent migration, and the cage material proportions changed to titanium: 4 (3.1%) and PEEK: 126 (96.9%). There was no comparison between the different cage materials in the two studies that reported non-union after LIF.

Cage size

Four studies, three of moderate quality [33, 42, 49] and one of low quality [54], investigated the influence of cage size on posterior cage migration. Aoki et al. [33] evaluated the effect of cage size by calculating the difference between the cage height and pre-operative disc height. Migrated cages were 2.3 mm thinner (anterior) or 0.8 mm taller (posterior) compared with the disc, whereas for non-migrated cages, the cages were 2.5 mm taller (anterior) or 5 mm taller (posterior) than the disc. These distributions illustrated that undersized cages were a risk factor for cage migration (all $p < 0.01$). The details (sample size, grouping method, and complication rates) of the other three studies were compared (Table 5).

Three studies, two of moderate [40, 44] and one of high quality [51], evaluated the effect of cage width on cage subsidence. Upon pooling the data across these three studies, there were 313 and 242 cages with 18 mm and 22 mm width, respectively, and the incidence of cage

Table 5 Details of studies that evaluated effect of cage size on adverse events

Article	Li et al. [42]			Singhatanadgige et al. [49]			Zhao et al. [54]	
Number of total patients (adverse event rate)	286 (5.6%)			135 (59.3%)			512 (1.2%)	
Adverse event type	Migration			Subsidence			Migration	
Grouping method	Three levels of cage height			Three levels of cage height			Small cage (smaller than 28 mm × 14 mm × 9 mm) and large cage (larger than 31 mm × 18 mm × 11 mm)	
Group type	11 mm	12 mm	13 mm	8 mm	10 mm	12 mm	Small cage	Large cage
Number of patients with specific cage size (adverse event rate)	16 (50.0%)	60 (10.0%)	210 (1.9%)	24 (45.8%)	63 (54.0%)	48 (72.9%)	78 (5.1%)	434 (0.5%)

subsidence was as follows: 87 cases (27.8%) of 18-mm width cages, and 28 cases (11.6%) of 22-mm width cages.

Shape

Five studies mentioned the influence of cage shape on posterior cage migration after LIF and classified cages as either straight (either bullet-shaped or rectangular-shaped) or curved (either wedge-shaped or banana-shaped) [33, 43, 47, 54, 56]. Qualities ranged from low ($n=2$) and moderate ($n=3$). Of the 981 patients undergoing fusion surgery, 383 had straight cages and 646 had curved cages. There were 27 (7.0%) migrated cases for the straight cage and 20 (3.1%) migrated cases for the curved cage. Two studies further evaluated the effect of cage shape by dividing cages into open and closed box cages. One moderate-quality study involving 46 closed and 34 open box cages described an incidence of subsidence in 20 (43.5%) and 4 patients (11.8%), respectively [31]. Another study of moderate quality that incorporated open or closed box designs did not find that any of the five closed box cages migrated, whereas nine out of 1,433 open box cages did experience migration (0.6%) [38].

Position

Five articles, three of moderate [31, 32, 49] and two of high quality [48, 52], have reported cage positions in their studies. Of these studies, 388, 874, and 67 cages were located at the anterior, posterior, and medial position of the disc space, respectively. The incidence of cage subsidence or migration for these cage positions was anterior (26.0%), posterior (19.1%), and medial (50.7%). Four of these studies showed that cages located at the medial or posterior position had higher adverse event rates ($p < 0.05$) [32, 48, 49, 52]. One study of moderate quality found that more subsided cages were located at the posterior position of the disc space (10 of 14) [20]. Two other moderate-quality studies evaluated the influence of cage position by calculating a depth ratio, defined by the distance between the cage centre and disc centre divided by the lateral width of the endplate. A lower depth ratio indicated that the cage was located more posteriorly. Univariate analysis of these studies indicated that migrated cages had a significantly lower depth ratio ($p < 0.001$) [25, 56].

Summary of risk factors

The main risk factors of adverse events after LIF that are associated with the endplate were advanced age, distal fusion level, multi-level fusion, low BMD, spondylolisthesis, disc height, irregular endplate shape, undersized cages, straight cages, closed box cages, unilateral screw fixation, and medial/posterior cage position on the endplate. The number of articles focused on each risk factor for different adverse events after LIF and the

corresponding mean quality scores are summarised in Fig. 4.

Risk factors such as low BMD, medial/posterior cage position, irregular endplate shape, undersized cage, and distal fusion level were the most frequently reported factors. The mean quality score of a risk factor is the average quality score of all articles involving this risk factor. The mean quality scores of all included risk factors are ≥ 14 (moderate quality), which means the findings associated with each risk factor have at least modest reliability.

The incidence rates for cage subsidence and cage migration were only available for nine risk factors (Fig. 5).

Discussion

This systematic review aimed to identify how geometric and material property factors contribute to adverse outcomes following LIF. A total of 29 studies described four primary adverse events: cage subsidence, cage migration, combined cage subsidence and migration, and non-union. Interbody device subsidence was associated with an increased fusion failure rate [11], and screw loosening, as one of the causes of non-union, can lead to a higher fusion failure rate [34], while other risk factors may contribute to fusion failure, including demographics and cage specifications.

Among all the geometric features of the lumbar endplate, a pear-shaped disc was the most common risk factor for adverse events after LIF. The pear-shaped disc is described as having both endplates with convex surfaces in its anterior halves and concave surfaces in its posterior halves (Fig. 6). For a normal intervertebral disc, both endplates have a slightly concave surface, indicating that there would be at least four contact points between the interbody cage and endplates after inserting the common cage into the intervertebral space (Fig. 6a). However, the contact regions can be decreased to two if the same cage is inserted into the space of the pear-shaped disc (Fig. 6b), and the contact forces would ultimately act on one side of the interbody cage, which might cause movement of the cage. This phenomenon was a significant risk factor for negative events after LIF for pear-shaped discs [38, 41, 47, 48, 56].

Other factors can also reduce contact points between the cage and endplates, possibly leading to cage motion. For instance, a large disc height can result in the lack of superior contact forces on the interbody cage, which generated instability after LIF (Fig. 6c). Therefore, large disc height [25, 33] and undersized cage [33, 42, 54] were shown to be contributors for adverse events after LIF. However, this cannot explain why shorter disc heights were observed with cage subsidence in another study [53]. This may relate to intraoperative technique as larger discs might be relatively undersized. A large disc angle

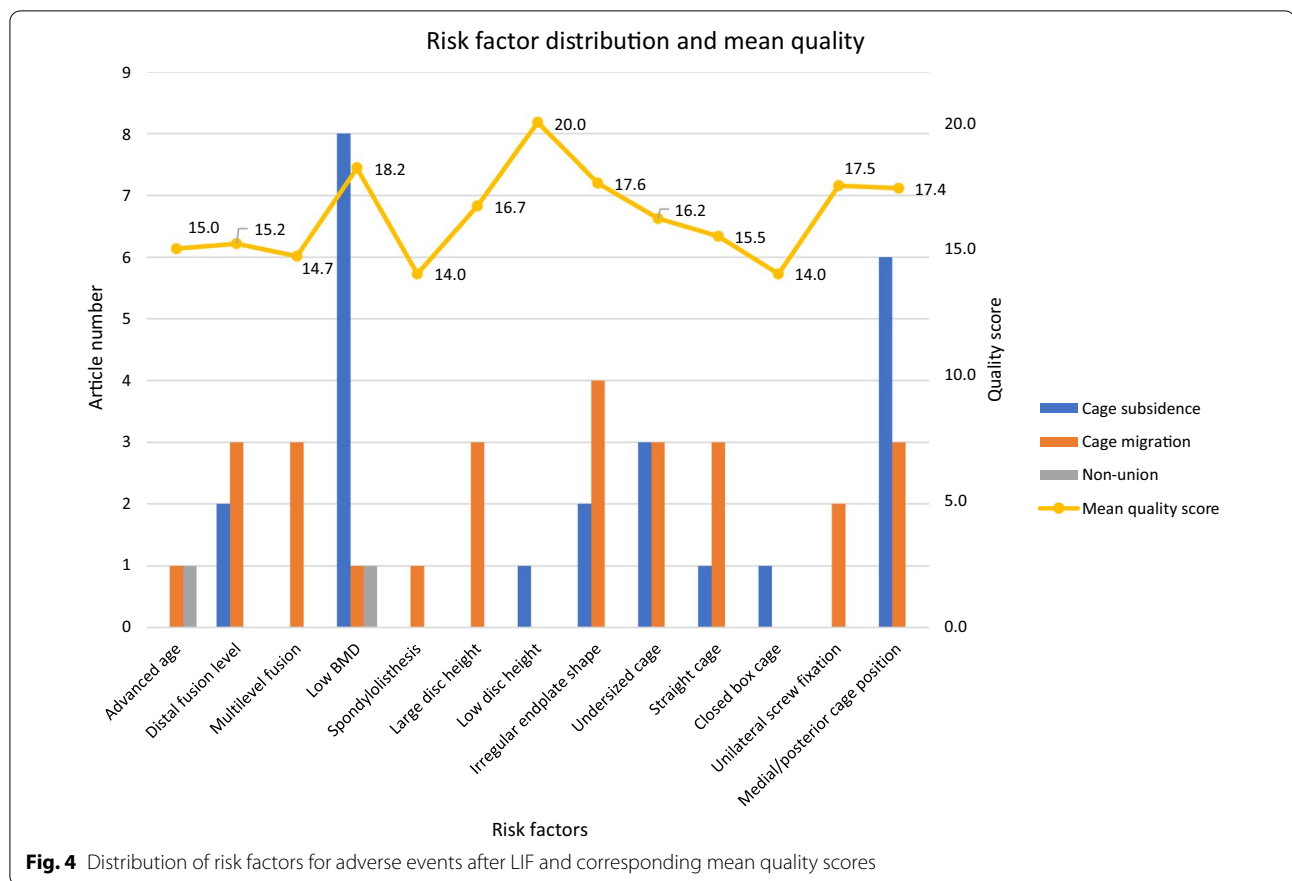


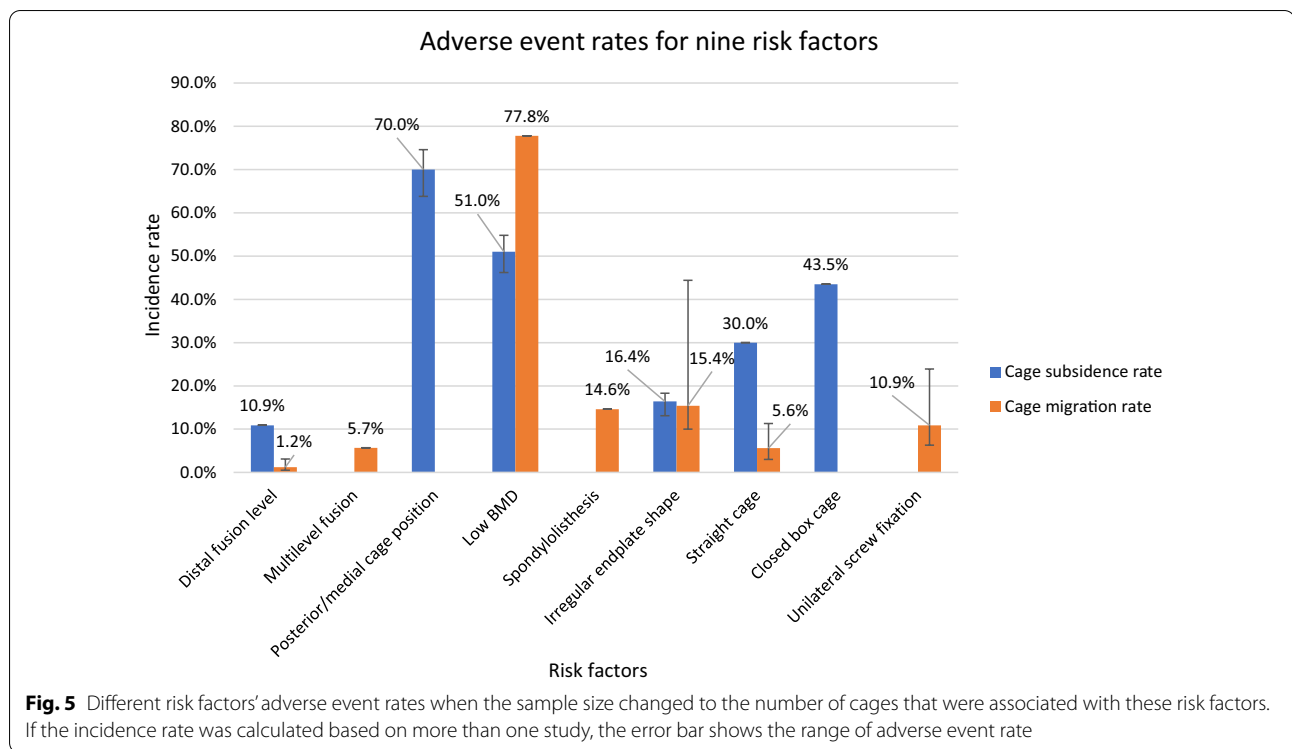
Fig. 4 Distribution of risk factors for adverse events after LIF and corresponding mean quality scores

(lordotic angle) may also cause instability after LIF due to decreased contact points, especially for a pear-shaped disc with a large disc angle as only one contact point may be preserved in this circumstance (Fig. 6d, e). In addition, a surgeon may have difficulty selecting an appropriate interbody cage for PLIF in this scenario because of the low posterior disc height [38]. Since the disc angle increases towards a lower level [15], LIF at distal levels may cause negative outcomes [20, 37, 38, 47, 83]. A similar unstable contact between cage and endplates was caused by spondylolisthesis, where one of the lower vertebrae generally slips anterior to the caudal vertebrae [84]. The contact interface between the cage and endplates is decreased due to slippage (Fig. 6f), leading to a higher rate of adverse events after LIF [42]. Because of the pre-existing slip, there are also generally higher abnormal shear forces presented at that level. Due to limited access to the original data associated with included studies, further analysis of the relationships between various patient pathologies and fusion failure was not feasible.

In addition to instability at the fusion site caused by insufficient contact between the cage and endplates, the relative movements of the endplates (vertebrae) can affect LIF outcomes. The interbody cage was more likely

to move with a rotatory motion within the intervertebral space [81]. Accordingly, the lack of posterior fixation and unilateral pedicle screw fixation may not effectively restrict the rotatory motion between endplates, leading to higher rates of adverse events after LIF [81, 85]. However, unilateral pedicle screw fixation can reduce intraoperative blood loss and shorten the operation time [86, 87]. Therefore, surgeons may choose a screw fixation method in LIF based on the constraints imposed by the specific case.

BMD, strength, and thickness are critical material properties of the lumbar endplate. Endplate regions with low BMD/strength/thickness are vulnerable areas particularly susceptible to fractures. As osteoporosis is associated with decreased BMD, osteoporosis is a vital risk factor related to adverse events after LIF [34, 47, 48]. Okuyama et al. [46] provided a specific BMD value range that could increase the risk of non-union after PLIF, which is useful for interbody cage design and selection for LIF. For LIF involving posterior fixation, osteoporosis can lead to screw loosening [34]. In addition, similar to the principle mentioned previously, screw loosening would affect the ability of posterior instruments to restrict motion between the vertebrae, indicating associations between screw loosening and



non-union [81]. Combined with the associations between cage retropulsion and screw loosening [41], the relationship between osteoporosis and adverse events after LIF is clear. As osteoporosis is more common in older people [88], advanced age is considered as a contributing factor for adverse events such as cage subsidence, cage migration, and non-union [35, 39, 49, 55].

Compared with the peripheral region of the endplate, the central area of the lumbar endplate is thinner and weaker [19, 23, 24]. Therefore, the influence of the contact area location between the interbody cage and the endplate should be considered. For example, a cage placed at a medio-medial position has been shown to lead to a high migration rate after LIF [31]. LIF using a unilateral single cage has also been shown to lead to a higher cage retropulsion rate than that of surgery with bilateral double cages because unilateral single cages tend to be located more centrally [48]. Similarly, because the peak of the concave surface of the endplate was the contact point between the bullet-shaped cage and adjacent endplate (Fig. 7a), this region is prone to endplate fractures because of the thinner and weaker central area of the endplate.

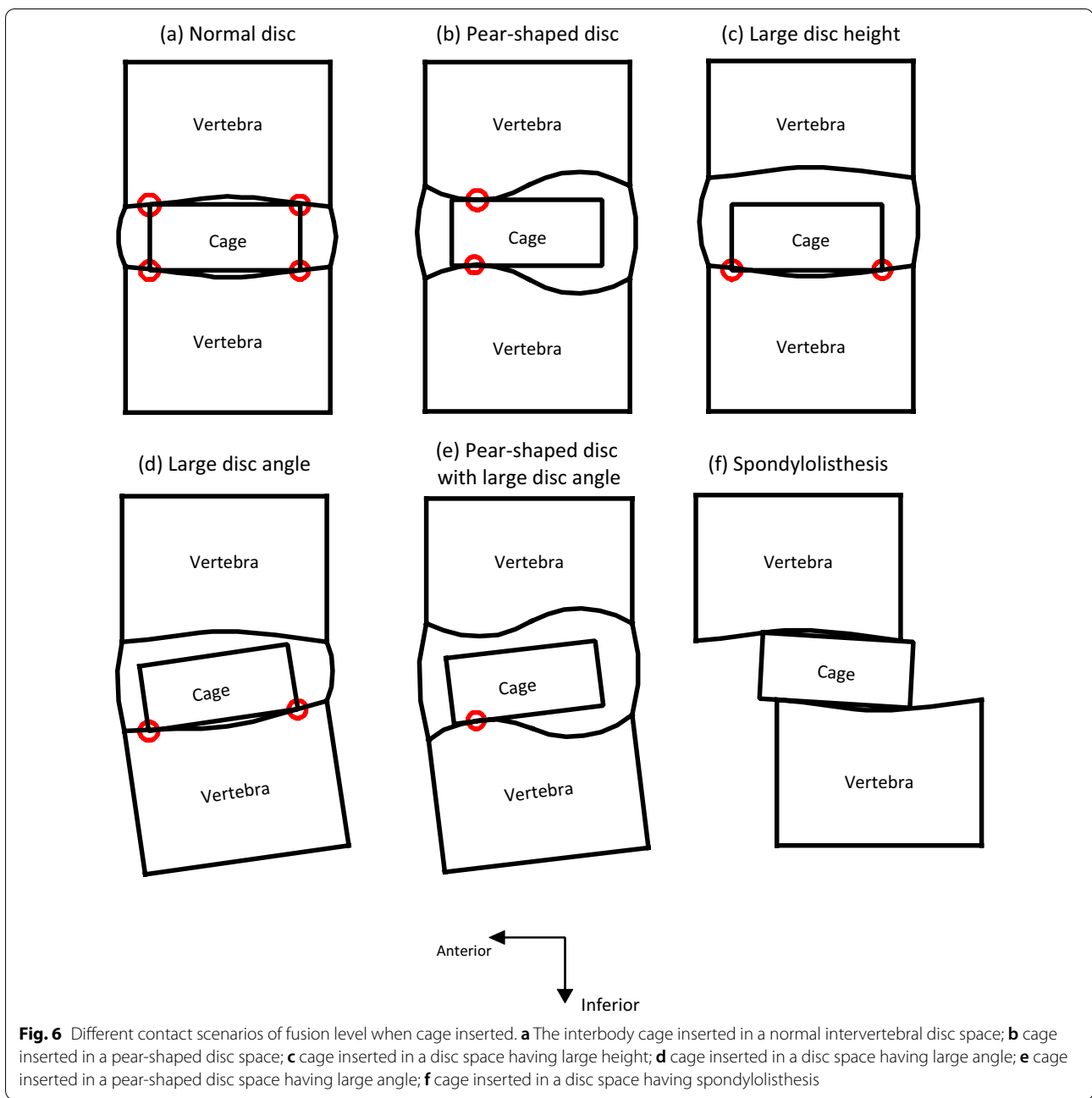
Use of straight cage (bullet-shaped cage and rectangular-shaped cage) was found to be a risk factor for adverse event after LIF [33, 47, 76, 89]. Except the material properties of the endplate region in contact with bullet-shaped cage, the contact points cannot generate offset forces to stabilise the fusion level (Fig. 7a) [33]. Although

the rectangular-shaped cage could have the ability to resist the mechanical forces to push the cage out, the small contact area between this type of cage and endplates could create high stress concentrations on the endplates (Fig. 7b), which was adverse for bony fusion [90].

Although the screw fixation method and cage specifications did not belong to geometric and material properties of the endplate, these factors were included because they could influence the interbody cage motion by changing cage-endplate contact area, angle, and site, which were associated with endplate geometric and material properties.

To prevent the postoperative adverse events of LIF, the following recommendations were drawn for cage design or selection based on the results of this review: (1) employ a cage with a relatively large contact area with endplates to eliminate stress concentrations on the endplates; (2) use a cage with a height or intervertebral angle that maximises contact area between the cage and endplates; (3) preferably, this contact area is concentrated in the periphery of the disc space to take advantage of the best quality bone; (4) select bilateral pedicle screw fixation if the surgeon aims to minimise inadvertent micro-motions inside the disc space; (5) carefully select interbody cage and counsel for patients who are elderly, have osteoporosis, and have certain spinal disorders.

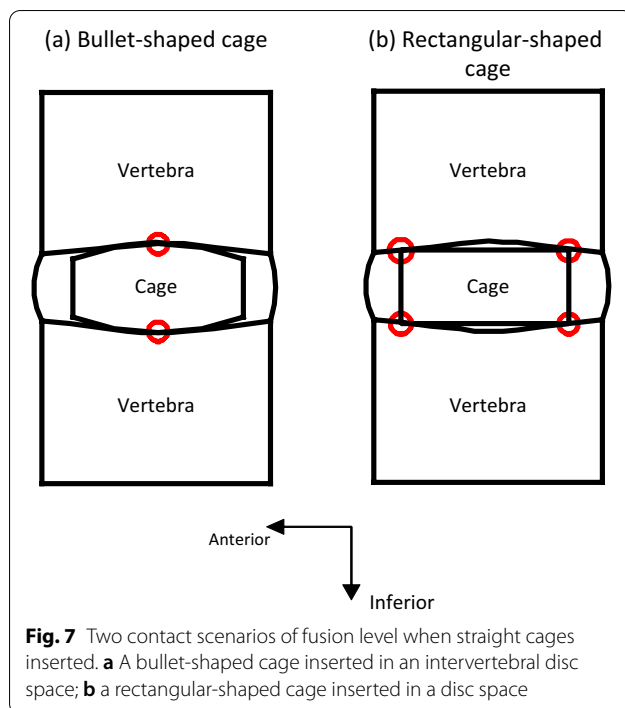
Several systematic reviews on LIF have focused on three aspects: comparison between different types of



LIF, influence of surgical factors on LIF, and effectiveness of different devices used in LIF [91–93]. However, only few review papers have directly investigated the risk factors for adverse events after LIF, and these studies were limited to only one or two types of postoperative adverse events. Therefore, the number of included articles was an inevitable limitation of the previous review on risk factors [89]. Based on similar reasons behind different adverse events after LIF (especially cage migration and cage subsidence), some risk factors for different

postoperative adverse events were grouped and analysed together in this systematic review. This provides a more comprehensive interpretation of the influence of different risk factors on adverse events after LIF.

Our systematic review has some limitations. First, the data reported in all included articles was heterogeneous, or limited in sample size or data output, which meant that a meta-analysis was not practical. Consequently, the risk factors for LIF in this review were not statistically analysed. Second, the number of articles



included was relatively small. Hence, there may be some risk factors that have not been covered in this systematic review, or some risk factors illustrated in this review were not fully evaluated. However, previous systematic reviews focusing on LIF results had similar numbers of included articles [89, 92, 94, 95]. Third, the validity of the customised checklist for quality assessment was not evaluated; however, the questions of the customised checklist were derived from the STROBE statement and Downs and Black checklists which were deemed suitable for judging methodological quality of observational, randomised, and non-randomised studies [29, 30]. Finally, computational works were excluded in this review because we specifically focused on available clinical data regarding post-operative LIF complications. There are, however, computational and 3D morphometric studies that have analysed geometric and bone density-related factors of the lumbar endplate [96–98]. These studies showed variations of endplate shape across lumbar levels and influence of cage positions on fusion outcomes and may be useful in informing the design of future interbody devices.

Conclusions

This systematic review provided a summary of published studies that focused on risk factors for cage subsidence, cage migration, combined cage subsidence and migration, and non-union after LIF. Of particular interest to us was to investigate fusion failure risk factors

associated with geometric and material properties of the endplate. This is an area which is relatively less explored in the literature, primary risk factors included advanced age, osteoporosis, spondylolisthesis, under-sized or straight cage, medial or posterior cage position, irregular endplate shape, distal fusion level, and multi-level fusion. These factors were associated with reduced cage and endplate contact interface, thin and weak bony endplates, and spinal diseases that weaken the endplate and vertebrae or decrease the contact surface between the cage and endplate. Further studies are required to analyse the significance of all the main risk factors for adverse events after LIF based on accurate data from the same group of patients. The results of this review study may help guide device selection and surgical decision making in LIF.

Abbreviations

ALIF: Anterior lumbar interbody fusion; BMD: Bone mineral density; BMI: Body mass index; DDD: Degenerative disc disease; HU: Hounsfield unit; LIF: Lumbar interbody fusion; LLIF: Lateral lumbar interbody fusion; MIFTLIF: Minimally invasive transforaminal lumbar interbody fusion; PEEK: Polyetheretherketone; PRISMA: Preferred Reporting Items for Systematic Reviews and Meta-Analyses; PLIF: Posterior lumbar interbody fusion; ROM: Range of motion; STROBE: Strengthening the Reporting of Observational Studies in Epidemiology; TLIF: Transforaminal lumbar interbody fusion; XLIF: Extreme lateral lumbar interbody fusion.

Supplementary Information

The online version contains supplementary material available at <https://doi.org/10.1186/s13018-022-03091-8>.

Additional file 1. Reasons for setting up exclusion criteria, quality assessment checklist, quality score distribution, and detailed demographics and diagnosis for included patients.

Additional file 2. The PRISMA 2020 checklist for this systematic review.

Additional file 3. Results of quality assessment on each included study.

Additional file 4. Available data of patients involved in included studies.

Acknowledgements

The authors would like to thank Mr. Praveen Krishna (University of Melbourne, Australia) for checking the grammar and language of the manuscript.

Author contributions

DA, DR, PL, YHY, and YY helped in conception or design of the work, critical revision of the article, and final approval of the manuscript; DA and YHY contributed to article search and data collection and data analysis and interpretation; YHY drafted the article. All authors read and approved the final manuscript.

Funding

This study was funded by the Australian Research Council Training Centre for Medical Implant Technologies (ARC CMIT).

Availability of data and materials

The data generated and/or analysed during the current study are available from the corresponding author on reasonable request.

Declarations

Ethics approval and consent to participate

Not applicable.

Consent for publication

Not applicable.

Competing interests

The authors declare that they have no competing interests.

Author details

¹Department of Biomedical Engineering, University of Melbourne, Parkville, VIC 3010, Australia. ²Department of Orthopaedics, Royal Melbourne Hospital, Parkville, VIC 3052, Australia.

Received: 15 November 2021 Accepted: 22 March 2022

Published online: 10 April 2022

References

- Hartvigsen J, Hancock MJ, Kongsted A, Louw Q, Ferreira ML, Genevay S, et al. What low back pain is and why we need to pay attention. *Lancet*. 2018;391(10137):2356–67.
- Resnick DK, Choudhri TF, Dailey AT, Groff MW, Khoo L, Matz PG, et al. Guidelines for the performance of fusion procedures for degenerative disease of the lumbar spine. Part 1: introduction and methodology. *J Neurosurg Spine*. 2005;2(6):637–8.
- Schroeder GD, Kepler CK, Millhouse PW, Fleischman AN, Maltenfort MG, Bateman DK, et al. L5/S1 fusion rates in degenerative spine surgery: a systematic review comparing ALIF, TLIF, and axial interbody arthrodesis. *Clin Spine Surg*. 2016;29(4):150–5.
- Kim SS, Michelsen CB. Revision surgery for failed back surgery syndrome. *Spine*. 1992;17(8):957–60.
- Orita S, Nakajima T, Konno K, Inage K, Sainoh T, Fujimoto K, et al. Salvage strategy for failed spinal fusion surgery using lumbar lateral interbody fusion technique: a technical note. *Spine Surg Relat Res*. 2018;2(1):86–92.
- Bassani R, Sinigaglia A, Lamartina C. Minimally invasive double approach (anterior and posterior) to the lumbar spine in revision surgery. *Eur Spine J*. 2012;21(9):1900.
- Papadakis M, Aggeliki L, Papadopoulos EC, Girardi FP. Common surgical complications in degenerative spinal surgery. *World J Orthop*. 2013;4(2):62.
- Mobbs RJ, Phan K, Malham G, Seex K, Rao PJ. Lumbar interbody fusion: techniques, indications and comparison of interbody fusion options including PLIF, TLIF, MI-TLIF, OLIF/ATP, LLIF and ALIF. *J Spine Surg*. 2015;1(1):2.
- McGilvray KC, Easley J, Seim HB, Regan D, Berven SH, Hsu WK, et al. Bony ingrowth potential of 3D-printed porous titanium alloy: a direct comparison of interbody cage materials in an in vivo ovine lumbar fusion model. *Spine J*. 2018;18(7):1250–60.
- Rao PJ, Pelletier MH, Walsh WR, Mobbs RJ. Spine interbody implants: material selection and modification, functionalization and bioactivation of surfaces to improve osseointegration. *Orthop Surg*. 2014;6(2):81–9.
- Lam FC, Alkalay R, Groff MW. The effects of design and positioning of carbon fiber lumbar interbody cages and their subsidence in vertebral bodies. *Clin Spine Surg*. 2012;25(2):116–22.
- Weiner BK, Fraser RD. Lumbar interbody cages. *Spine*. 1998;23(5):634–40.
- Alkalay RN, Adamson R, Groff MW. The effect of interbody fusion cage design on the stability of the instrumented spine in response to cyclic loading: an experimental study. *Spine J*. 2018;18(10):1867–76.
- Chen H, Jiang D, Ou Y, Zhong J, Lv F. Geometry of thoracolumbar vertebral endplates of the human spine. *Eur Spine J*. 2011;20(11):1814.
- Van der Houwen E, Baron P, Veldhuizen A, Burgerhof J, Van Ooijen P, Verkerke GJ. Geometry of the intervertebral volume and vertebral endplates of the human spine. *Ann Biomed Eng*. 2010;38(1):33–40.
- Louie PK, Orias AAE, Fogg LF, LaBelle M, An HS, Andersson GB, et al. Changes in lumbar endplate area and concavity associated with disc degeneration. *Spine*. 2018;43(19):E1127.
- Tang R, Gungor C, Sesek RF, Foreman KB, Gallagher S, Davis GA. Morphometry of the lower lumbar intervertebral discs and endplates: comparative analyses of new MRI data with previous findings. *Eur Spine J*. 2016;25(12):4116–31.
- Wang Y, Battié MC, Videman T. A morphological study of lumbar vertebral endplates: radiographic, visual and digital measurements. *Eur Spine J*. 2012;21(11):2316–23.
- Grant JP, Oxland TR, Dvorak MF. Mapping the structural properties of the lumbosacral vertebral endplates. *Spine*. 2001;26(8):889–96.
- Beutler WJ, Peppelman WC Jr. Anterior lumbar fusion with paired BAK standard and paired BAK proximity cages: subsidence incidence, subsidence factors, and clinical outcome. *Spine J*. 2003;3(4):289–93.
- Zhao F-D, Pollintine P, Hole B, Adams M, Dolan P. Vertebral fractures usually affect the cranial endplate because it is thinner and supported by less-dense trabecular bone. *Bone*. 2009;44(2):372–9.
- Roberts S, McCall I, Menage J, Haddaway M, Eisenstein S. Does the thickness of the vertebral subchondral bone reflect the composition of the intervertebral disc? *Eur Spine J*. 1997;6(6):385–9.
- Hou Y, Yuan W. Influences of disc degeneration and bone mineral density on the structural properties of lumbar end plates. *Spine J*. 2012;12(3):249–56.
- Adams MA, Dolan P. Biomechanics of vertebral compression fractures and clinical application. *Arch Orthop Trauma Surg*. 2011;131(12):1703–10.
- Hu Y-H, Niu C-C, Hsieh M-K, Tsai T-T, Chen W-J, Lai P-L. Cage positioning as a risk factor for posterior cage migration following transforaminal lumbar interbody fusion—an analysis of 953 cases. *BMC Musculoskelet Disord*. 2019;20(1):260.
- Moher D, Liberati A, Tetzlaff J, Altman DG, Group P. Preferred reporting items for systematic reviews and meta-analyses: the PRISMA statement. *PLoS Med*. 2009;6(7):e1000097.
- Cooke A, Smith D, Booth A. Beyond PICO: the SPIDER tool for qualitative evidence synthesis. *Qual Health Res*. 2012;22(10):1435–43.
- Babineau J. Product review: covidence (systematic review software). *J Can Health Libr Assoc/Journal de l'Association des bibliothèques de la santé du Canada*. 2014;35(2):68–71.
- Von Elm E, Altman DG, Egger M, Pocock SJ, Gøtzsche PC, Vandenbroucke JP. The Strengthening of Reporting of Observational Studies in Epidemiology (STROBE) statement: guidelines for reporting observational studies. *Ann Intern Med*. 2007;147(8):573–7.
- Downs SH, Black N. The feasibility of creating a checklist for the assessment of the methodological quality both of randomised and non-randomised studies of health care interventions. *J Epidemiol Community Health*. 1998;52(6):377–84.
- Abbushi A, Čabraja M, Thomale U-W, Woiciechowsky C, Kroppenstedt SN. The influence of cage positioning and cage type on cage migration and fusion rates in patients with monosegmental posterior lumbar interbody fusion and posterior fixation. *Eur Spine J*. 2009;18(11):1621.
- Amorim-Barbosa T, Pereira C, Catelas D, Rodrigues C, Costa P, Rodrigues-Pinto R, et al. Risk factors for cage subsidence and clinical outcomes after transforaminal and posterior lumbar interbody fusion. *Eur J Orthop Surg Traumatol*. 2021:1–9.
- Aoki Y, Yamagata M, Nakajima F, Ikeda Y, Shimizu K, Yoshihara M, et al. Examining risk factors for posterior migration of fusion cages following transforaminal lumbar interbody fusion: a possible limitation of unilateral pedicle screw fixation. *J Neurosurg Spine*. 2010;13(3):381–7.
- Cho JH, Hwang CJ, Kim H, Joo Y-S, Lee D-H, Lee CS. Effect of osteoporosis on the clinical and radiological outcomes following one-level posterior lumbar interbody fusion. *J Orthop Sci*. 2018;23(6):870–7.
- Jin L, Chen Z, Jiang C, Cao Y, Feng Z, Jiang X. Cage migration after unilateral instrumented transforaminal lumbar interbody fusion and associated risk factors: a modified measurement method. *J Int Med Res*. 2019;48(2):0300060519867828.
- Jones C, Okano I, Salzmann SN, Reisener MJ, Chiapparelli E, Shue J, et al. Endplate volumetric bone mineral density is a predictor for cage subsidence following lateral lumbar interbody fusion: a risk factor analysis. *Spine J*. 2021;21(10):1729–37.
- Kim M-C, Chung H-T, Cho J-L, Kim D-J, Chung N-S. Subsidence of polyetheretherketone cage after minimally invasive transforaminal lumbar interbody fusion. *Clin Spine Surg*. 2013;26(2):87–92.

38. Kimura H, Shikata J, Odate S, Soeda T, Yamamura S. Risk factors for cage retropulsion after posterior lumbar interbody fusion: analysis of 1070 cases. *Spine*. 2012;37(13):1164–9.
39. Konomi T, Yasuda A, Fujiyoshi K, Yato Y, Asazuma T. Incidences and risk factors for postoperative non-union after posterior lumbar interbody fusion with closed-box titanium spacers. *Asian Spine J*. 2020;14(1):106.
40. Le TV, Baaj AA, Dakwar E, Burkett CJ, Murray G, Smith DA, et al. Subsidence of polyetheretherketone intervertebral cages in minimally invasive lateral retroperitoneal transposoal lumbar interbody fusion. *Spine*. 2012;37(14):1268–73.
41. Lee D-Y, Park Y-J, Song S-Y, Jeong S-T, Kim D-H. Risk factors for posterior cage migration after lumbar interbody fusion surgery. *Asian Spine J*. 2018;12(1):59.
42. Li H, Wang H, Zhu Y, Ding W, Wang Q. Incidence and risk factors of posterior cage migration following decompression and instrumented fusion for degenerative lumbar disorders. *Medicine*. 2017;96(33):e7804.
43. Liu F, Feng Z, Zhou X, Liang Y, Jiang C, Li X, et al. Unilateral versus bilateral pedicle screw fixation in transforaminal lumbar interbody fusion. *Clin Spine Surg*. 2017;30(6):E776–83.
44. Marchi L, Abdala N, Oliveira L, Amaral R, Coutinho E, Pimenta L. Radiographic and clinical evaluation of cage subsidence after stand-alone lateral interbody fusion. *J Neurosurg Spine*. 2013;19(1):110–8.
45. Mi J, Li K, Zhao X, Zhao C-Q, Li H, Zhao J. Vertebral body Hounsfield units are associated with cage subsidence after transforaminal lumbar interbody fusion with unilateral pedicle screw fixation. *Clin Spine Surg*. 2017;30(8):E1130–6.
46. Okuyama K, Abe E, Suzuki T, Tamura Y, Chiba M, Sato K. Influence of bone mineral density on pedicle screw fixation: a study of pedicle screw fixation augmenting posterior lumbar interbody fusion in elderly patients. *Spine J*. 2001;11(6):402–7.
47. Pan FM, Wang SJ, Yong ZY, Liu XM, Huang YF, Wu DS. Risk factors for cage retropulsion after lumbar interbody fusion surgery: series of cases and literature review. *Int J Surg*. 2016;30:56–62.
48. Park MK, Kim KT, Bang WS, Cho DC, Sung JK, Lee YS, et al. Risk factors for cage migration and cage retropulsion following transforaminal lumbar interbody fusion. *Spine J*. 2019;19(3):437–47.
49. Singhatanadgige W, Sukthuyay A, Tanaviriyachai T, Kongtharvonskul J, Tanasansomboon T, Kerr SJ, et al. Risk factors for polyetheretherketone cage subsidence following minimally invasive transforaminal lumbar interbody fusion. *Acta Neurochir (Wien)*. 2021;163(9):2557–65.
50. Tempel ZJ, Gandhoke GS, Okonkwo DO, Kanter AS. Impaired bone mineral density as a predictor of graft subsidence following minimally invasive transposoal lateral lumbar interbody fusion. *Eur Spine J*. 2015;24(3):414–9.
51. Tohmeh AG, Khorsand D, Watson B, Zielinski X. Radiographical and clinical evaluation of extreme lateral interbody fusion: effects of cage size and instrumentation type with a minimum of 1-year follow-up. *Spine*. 2014;39(26):E1582–91.
52. Xi Z, Mummaneni PV, Wang M, Ruan H, Burch S, Deviren V, et al. The association between lower Hounsfield units on computed tomography and cage subsidence after lateral lumbar interbody fusion. *Neurosurg Focus*. 2020;49(2):E8.
53. Yao Y-C, Chou P-H, Lin H-H, Wang S-T, Liu C-L, Chang M-C. Risk factors of cage subsidence in patients received minimally invasive transforaminal lumbar interbody fusion. *Spine*. 2020;45(19):E1279–85.
54. Zhao F, Yang W, Shan Z, Wang J, Chen H, Hong Z, et al. Cage migration after transforaminal lumbar interbody fusion and factors related to it. *Orthop Surg*. 2012;4(4):227–32.
55. Zhou Q, Chen X, Xu L, Li S, Du C, Sun X, et al. Does vertebral end plate morphology affect cage subsidence after transforaminal lumbar interbody fusion? *World Neurosurg*. 2019;130:e694–701.
56. Zhou ZJ, Xia P, Zhao FD, Fang XQ, Fan SW, Zhang JF. Endplate injury as a risk factor for cage retropulsion following transforaminal lumbar interbody fusion: an analysis of 1052 cases. *Medicine (Baltimore)*. 2021;100(5):e24005.
57. Aleem IS, Rampersaud YR. Elderly patients have similar outcomes compared to younger patients after minimally invasive surgery for spinal stenosis. *Clin Orthop Relat Res*. 2014;472(6):1824–30.
58. Alimi M, Lang G, Navarro-Ramirez R, Perrech M, Berlin C, Hofstetter CP, et al. The impact of cage dimensions, positioning, and side of approach in extreme lateral interbody fusion. *Clin Spine Surg*. 2018;31(1):E42–9.
59. Badhiwala JH, Karmur BS, Hachem LD, Wilson JR, Jiang F, Jaja B, et al. The effect of older age on the perioperative outcomes of spinal fusion surgery in patients with lumbar degenerative disc disease with spondylolisthesis: a propensity score-matched analysis. *Neurosurgery*. 2020;87(4):672–8.
60. Campbell PG, Cavanaugh DA, Nunley P, Utter PA, Kerr E, Wadhwa R, et al. PEEK versus titanium cages in lateral lumbar interbody fusion: a comparative analysis of subsidence. *Neurosurg Focus*. 2020;49(3):E10.
61. Chen L, Yang H, Tang T. Cage migration in spondylolisthesis treated with posterior lumbar interbody fusion using BAK cages. *Spine*. 2005;30(19):2171–5.
62. Cho K-J, Suk S-I, Park S-R, Kim JH, Kang S-B, Kim H-S, et al. Risk factors of sagittal decompensation after long posterior instrumentation and fusion for degenerative lumbar scoliosis. *Spine*. 2010;35(17):1595–601.
63. Chrastil J, Patel AA. Complications associated with posterior and transforaminal lumbar interbody fusion. *JAAOS-J Am Acad Orthop Surg*. 2012;20(5):283–91.
64. Donnally CJ III, Sheu JI, Bondar KJ, Mouhanna JN, Li DJ, Butler AJ, et al. Is there a correlation between preoperative or postoperative vitamin D levels with pseudarthrosis, hardware failure, and revisions after lumbar spine fusion? *World Neurosurg*. 2019;130:e431–7.
65. Durand WM, Eltorai AE, Depasse JM, Yang J, Daniels AH. Risk factors for unplanned reoperation within 30 days following elective posterior lumbar spinal fusion. *Global Spine J*. 2018;8(4):388–95.
66. Fogel GR, Toohey JS, Neidre A, Brantigan JW. Is one cage enough in posterior lumbar interbody fusion: a comparison of unilateral single cage interbody fusion to bilateral cages. *Clin Spine Surg*. 2007;20(1):60–5.
67. Han S-H, Hyun S-J, Jahng T-A, Kim K-J. A comparative radiographic analysis of fusion rate between L4–5 and L5–S1 in a single level posterior lumbar interbody fusion. *Korean J Spine*. 2015;12(2):60.
68. Hu D, Wang J, Liu H, Cai L. Cage retropulsion after lumbar interbody fusion: a report of 16 cases. *Med J Wuhan Univ*. 2014;35:907–9.
69. Jaeger A, Gibler D, Bastard C, Thiebaud B, Roubineau F, Lachaniette CHF, et al. Risk factors of instrumentation failure and pseudarthrosis after stand-alone L5–S1 anterior lumbar interbody fusion: a retrospective cohort study. *J Neurosurg Spine*. 2019;31(3):338–46.
70. Kim Y. Bone density aspects in the biomechanical behavior of ALIF using cylindrical cages and PSF. *J Mech Sci Technol*. 2009;23(1):36–44.
71. Lee NJ, Kothari P, Phan K, Shin JI, Cutler HS, Lakomkin N, et al. Incidence and risk factors for 30-day unplanned readmissions after elective posterior lumbar fusion. *Spine*. 2018;43(1):41–8.
72. Li H, kuan Xu Z, Zhang N, Li F, Chen Q. Incidence and risk factors of lateral cage migration occurred after the first-stage lateral lumbar interbody fusion surgery. *Orthop Traumatol Surg Res*. 2021;107(7):1033.
73. Liu J, Ding W, Yang D, Wu H, Hao L, Hu Z, et al. Modic changes (MCs) associated with endplate sclerosis can prevent cage subsidence in oblique lumbar interbody fusion (OLIF) stand-alone. *World Neurosurg*. 2020;138:e160–8.
74. Nishimura Y, Hara M, Nakajima Y, Haimoto S, Yamamoto Y, Wakabayashi T. Outcomes and complications following posterior long lumbar fusions exceeding three levels. *Neurologia medico-chirurgica*. 2014;0a. 2014–0026.
75. Pisano AJ, Fredericks DR, Steelman T, Riccio C, Helgeson MD, Wagner SC. Lumbar disc height and vertebral Hounsfield units: association with interbody cage subsidence. *Neurosurg Focus*. 2020;49(2):E9.
76. Polikeit A, Ferguson SJ, Nolte LP, Orr TE. The importance of the endplate for interbody cages in the lumbar spine. *Eur Spine J*. 2003;12(6):556–61.
77. Rentenberger C, Okano I, Salzmann SN, Winter F, Plais N, Burkhard MD, et al. Perioperative risk factors for early revisions in stand-alone lateral lumbar interbody fusion. *World Neurosurg*. 2020;134:e657–63.
78. Tang F, Zhou J, Zhang Y, Zhong Y, Li Z, Mo Y. Risk factors associated with titanium cage subsidence after anterior single-level subtotal corpectomy and interbody fusion using titanium cage. *Chin J Tissue Eng Res*. 2019;23(12):1818.
79. Zeng ZY, Xu ZW, He DW, Zhao X, Ma WH, Ni WF, et al. Complications and prevention strategies of oblique lateral interbody fusion technique. *Orthop Surg*. 2018;10(2):98–106.
80. Zhao L, Zeng J, Xie T, Pu X, Lu Y. Advances in research on Cage subsidence following lumbar interbody fusion. *Zhongguo xiu fu Chong Jian wai ke za zhi= Zhongguo Xiufu Chongjian Waik Zazhi= Chin J Reparative Reconstr Surg*. 2021;35(8):1063–7.

81. Duncan JW, Bailey RA. An analysis of fusion cage migration in unilateral and bilateral fixation with transforaminal lumbar interbody fusion. *Eur Spine J*. 2013;22(2):439–45.
82. Williams AL, Gornet MF, Burkus JK. CT evaluation of lumbar interbody fusion: current concepts. *Am J Neuroradiol*. 2005;26(8):2057–66.
83. Choi KC, Ahn Y, Kang BU, Jang JH, Kim KK, Shin YH, et al. Failed anterior lumbar interbody fusion due to incomplete foraminal decompression. *Acta Neurochir (Wien)*. 2011;153(3):567–74.
84. Capener N. Spondylolisthesis. *Br J Surg*. 1932;19(75):374–86.
85. Corniola MV, Jägersberg M, Stienen MN, Gautschi OP. Complete cage migration/subsidence into the adjacent vertebral body after posterior lumbar interbody fusion. *J Clin Neurosci*. 2015;22(3):597–8.
86. Emará E, Morad S, Farghaly A, Ahmed O, Khalil M. Unilateral versus bilateral pedicle screw fixation associated with interbody fusion in degenerative lumbar spine diseases. *QJM Int J Med*. 2020;113(Supplement_1):hcaa055.
87. Suk KS, Lee HM, Kim NH, Ha JW. Unilateral versus bilateral pedicle screw fixation in lumbar spinal fusion. *Spine*. 2000;25(14):1843–7.
88. Srivastava M, Deal C. Osteoporosis in elderly: prevention and treatment. *Clin Geriatr Med*. 2002;18(3):529–55.
89. Liu K, Chang H, Wang L, Wang C, Chen T, Meng X. Risk factors for cage retropulsion after lumbar interbody fusion: systematic review and meta-analysis. *World Neurosurg*. 2019;132:273–81.
90. Kumar N, Judith MR, Kumar A, Mishra V, Robert MC. Analysis of stress distribution in lumbar interbody fusion. *Spine*. 2005;30(15):1731–5.
91. de Kunder SL, van Kuijk SM, Rijkers K, Caelers IJ, van Hemert WL, de Bie RA, et al. Transforaminal lumbar interbody fusion (TLIF) versus posterior lumbar interbody fusion (PLIF) in lumbar spondylolisthesis: a systematic review and meta-analysis. *Spine J*. 2017;17(11):1712–21.
92. Formica M, Vallerga D, Zanirato A, Cavagnaro L, Basso M, Divano S, et al. Fusion rate and influence of surgery-related factors in lumbar interbody arthrodesis for degenerative spine diseases: a meta-analysis and systematic review. *Musculoskelet Surg*. 2020;104(1):1–15.
93. Manzur MK, Steinhaus ME, Virk SS, Jivanelli B, Vaishnav A, McAnany S, et al. Fusion rate for stand-alone lateral lumbar interbody fusion: a systematic review. *Spine J*. 2020;10(2):98–106.
94. Phillips FM, Slosar PJ, Youssef JA, Andersson G, Papatheofanis F. Lumbar spine fusion for chronic low back pain due to degenerative disc disease: a systematic review. *Spine*. 2013;38(7):E409–22.
95. Giang G, Mobbs R, Phan S, Tran TM, Phan K. Evaluating outcomes of stand-alone anterior lumbar interbody fusion: a systematic review. *World Neurosurg*. 2017;104:259–71.
96. Singh T, Parr WCH, Choy WJ, Budiono GR, Maharaj M, Mathis X, et al. Three-dimensional morphometric analysis of lumbar vertebral end plate anatomy. *World Neurosurg*. 2020;135:e321–32.
97. Qin Y, Zhao B, Yuan J, Xu C, Su J, Hao J, et al. Does cage position affect the risk of cage subsidence after oblique lumbar interbody fusion in the osteoporotic lumbar spine: a finite element analysis. *World Neurosurg*. 2022. <https://doi.org/10.1016/j.wneu.2022.01.107>.
98. Zhang H, Hao D, Sun H, He S, Wang B, Hu H, et al. Biomechanical effects of direction-changeable cage positions on lumbar spine: a finite element study. *Am J Transl Res*. 2020;12(2):389.

Publisher's Note

Springer Nature remains neutral with regard to jurisdictional claims in published maps and institutional affiliations.

Ready to submit your research? Choose BMC and benefit from:

- fast, convenient online submission
- thorough peer review by experienced researchers in your field
- rapid publication on acceptance
- support for research data, including large and complex data types
- gold Open Access which fosters wider collaboration and increased citations
- maximum visibility for your research: over 100M website views per year

At BMC, research is always in progress.

Learn more biomedcentral.com/submissions

