

RESEARCH ARTICLE

Open Access

Identification of hub genes in rheumatoid arthritis through an integrated bioinformatics approach



Rui Wu^{1,2}, Li Long^{1,2}, Qiao Zhou^{1,2}, Jiang Su^{1,2}, Wei Su^{1,2} and Jing Zhu^{1,2*}

Abstract

Background: Rheumatoid arthritis (RA) is a common chronic autoimmune disease characterized by inflammation of the synovial membrane. However, the etiology and underlying molecular events of RA are unclear. Here, we applied bioinformatics analysis to identify the key genes involved in RA.

Methods: GSE77298 was downloaded from the Gene Expression Omnibus (GEO) database. We used the R software screen the differentially expressed genes (DEGs). Gene ontology enrichment analysis and Kyoto Encyclopedia of Genes and Genomes pathway were analyzed by using the DAVID online tool. The STRING database was used to analyze the interaction of differentially encoded proteins. PPI interaction network was divided into subnetworks using MCODE algorithm and was analyzed using Cytoscape. Gene set enrichment analysis (GSEA) was performed to identify relevant biological functions. qRT-PCR analysis was also performed to verify the expression of identified hub DEGs.

Results: A total of 4062 differentially expressed genes were selected, including 1847 upregulated genes and 2215 downregulated genes. In the biological process, DEGs were mainly concentrated in the fields of muscle filament sliding, muscle contraction, intracellular signal transduction, cardiac muscle contraction, signal transduction, and skeletal muscle tissue development. In the cellular components, DEGs were mainly concentrated in the parts of cytosol, Z disk, membrane, extracellular exosome, mitochondrion, and M band. In molecular functions, DEGs were mainly concentrated in protein binding, structural constituent of muscle, actin binding, and actin filament binding. KEGG pathway analysis shows that DEGs mainly focuses on pathways about lysosome, Wnt/ β -catenin signaling pathway, and NF- κ B signaling pathway. CXCR3, GNB4, and CXCL16 were identified as the core genes that involved in the progression of RA. By qRT-PCR analysis, we found that CXCR3, GNB4, and CXCL16 were significantly upregulated in RA tissue as compared to healthy controls.

Conclusion: In conclusion, DEGs and hub genes identified in the present study help us understand the molecular mechanisms underlying the progression of RA, and provide candidate targets for diagnosis and treatment of RA.

Keywords: Rheumatoid arthritis, Bioinformatics, Differentially expressed genes

* Correspondence: douwei19990715@126.com

¹Department of Rheumatology and Immunology, Sichuan Provincial People's Hospital, University of Electronic Science and Technology of China, 32 West of First Ring Road, Chengdu, Sichuan 610072, P.R. China

²Chinese Academy of Sciences Sichuan Translational Medicine Research Hospital, Chengdu 610072, China



© The Author(s). 2021 **Open Access** This article is licensed under a Creative Commons Attribution 4.0 International License, which permits use, sharing, adaptation, distribution and reproduction in any medium or format, as long as you give appropriate credit to the original author(s) and the source, provide a link to the Creative Commons licence, and indicate if changes were made. The images or other third party material in this article are included in the article's Creative Commons licence, unless indicated otherwise in a credit line to the material. If material is not included in the article's Creative Commons licence and your intended use is not permitted by statutory regulation or exceeds the permitted use, you will need to obtain permission directly from the copyright holder. To view a copy of this licence, visit <http://creativecommons.org/licenses/by/4.0/>. The Creative Commons Public Domain Dedication waiver (<http://creativecommons.org/publicdomain/zero/1.0/>) applies to the data made available in this article, unless otherwise stated in a credit line to the data.

Background

Rheumatoid arthritis (RA) is an autoimmune disease characterized by chronic inflammation, hyperproliferation of synovial tissue, and progressive destruction of multiple joints [1, 2]. RA mainly targets the synovium of diarthrodial joints [3, 4]. According to statistics, the prevalence of RA in China is about 0.5-1%, 0.5-5 new cases per 1000 people per year. RA has become one of the most common causes of disability in patients [5]. In RA, females are three times more affected than men [6]. RA manifests as osteoporosis around the joints, stenosis of the joint space of the knee joint, and bone cystic degeneration [7, 8]. The pathogenesis of RA mainly focuses on autoantibodies and immune complexes [9]. RA involves T cell-mediated antigen-specific response, T cell-independent cytokine network, and aggressive tumor-like behavior of rheumatoid synovium [10]. The initial characteristics of the membrane are abnormal growth, infiltration of inflammatory cells (macrophages, T and B lymphocytes, plasma cells, and neutrophils), and the formation of pannus [11]. Significant thickening of the synovium is the most typical pathological change of RA [12]. Studies have shown that synovial inflammation plays an important role in the pathogenesis of RA. But the exact pathogenesis of RA is unclear.

Chip technology has improved the ability to study disease pathogenesis and is an important technology for functional genomics research [13]. In recent years, with the commercialization of chips based on high-throughput platforms, this technology has gradually been used to explore disease epigenetics and screen effective biomarkers for disease diagnosis and prognosis [14]. In the expression monitoring of RA, the chip is mainly used to detect the gene expression profile of peripheral blood cells, miRNA expression, and circRNA expression.

With the development of next-generation sequencing technologies and the improvement of biological database, using bioinformatics methods to explore the relevant mechanisms is significant.

Methods

Microarray studies and datasets from Gene Expression Omnibus (GEO)

The microarray datasets including GSE77298 was downloaded from the GEO database (<https://www.ncbi.nlm.nih.gov/geo/>) using “rheumatoid arthritis” as the keyword. The microarray dataset GSE77298 from GPL570 platform contains 7 samples of RA (end-stage RA synovial biopsies) and 16 healthy controls (synovial biopsies from individuals without a joint disease). The expression micro-array datasets was Affymetrix Human Genome U133 Plus 2.0 Array.

Differential genes expression analysis

Statistical programming language R (version 4.0.2) was used for log₂ transformation of the data, and the two datasets were merged [15]. “SVA” package was used for batch correction. Differential expressed genes (DEGs) were defined as $\log |FC| > 0.5$, and the corrected $p < 0.05$. $\log |FC| > 0$ means that the DEG is upregulated in RA.

Functional annotation and pathway analysis of DEGs

DEGs were inputted into David 6.8 online tools (<https://david.ncifcrf.gov/>) to perform Gene Ontology (GO) analysis and Kyoto Encyclopedia of Genes and Genomes (KEGG) pathway enrichment [16, 17]. $P < 0.05$ and the gene counts > 3 were considered statistically significant.

Protein-protein interaction (PPI) network and key genes acquisition

Using the Search Tool for the Retrieval of Interacting Genes (STRING, version 11.0, <https://string-db.org/>) database to analyze the PPI of proteins encoded by DEGs (medium confidence = 0.04) [18]. Cytoscape software (version 3.8.0) was used to perform visualization of PPI network. We used cytohubba plug-in to analyze the nodes of the genes with topological analysis methods, filtering with degree and stress and obtaining the key genes from the intersection of the first 15 genes sorted out in degree and stress methods respectively [19].

Gene set enrichment analysis (GSEA)

Further GSEA was carried out for all genes that were detected by use of GSEA software (version 4.0.0), providing us another option to screen out significant differential biological functions derived after bariatric surgery [20]. The gene set arrangement was performed 1000 times per analysis. Gene sets was considered to be significantly enriched with an alpha or P value $< 5\%$ and a false discovery rate (FDR) $< 25\%$.

Quantitative real-time polymerase chain reaction (qRT-PCR)

RA was diagnosed based on the revised RA classification criteria by the American College of Rheumatology. For non-RA control, the synovial tissue samples were collected from 30 patients who underwent emergency trauma amputation. Synovial tissue was obtained and stored in liquid nitrogen and kept at $-80\text{ }^{\circ}\text{C}$. Extraction of total RNA from tissues and cell lines was used Trizol reagent (Thermo Fisher Scientific, Waltham, USA) [21, 22]. Reverse transcription of mRNA was performed using PrimeScript RT reagent kit (TaKara, Dalian, China). The qRT-PCR experiment accorded to instructions of a SYBR Premix Ex Taq Kit (TaKaRa, Dalian, China) and performed on an ABI 7500 (Applied

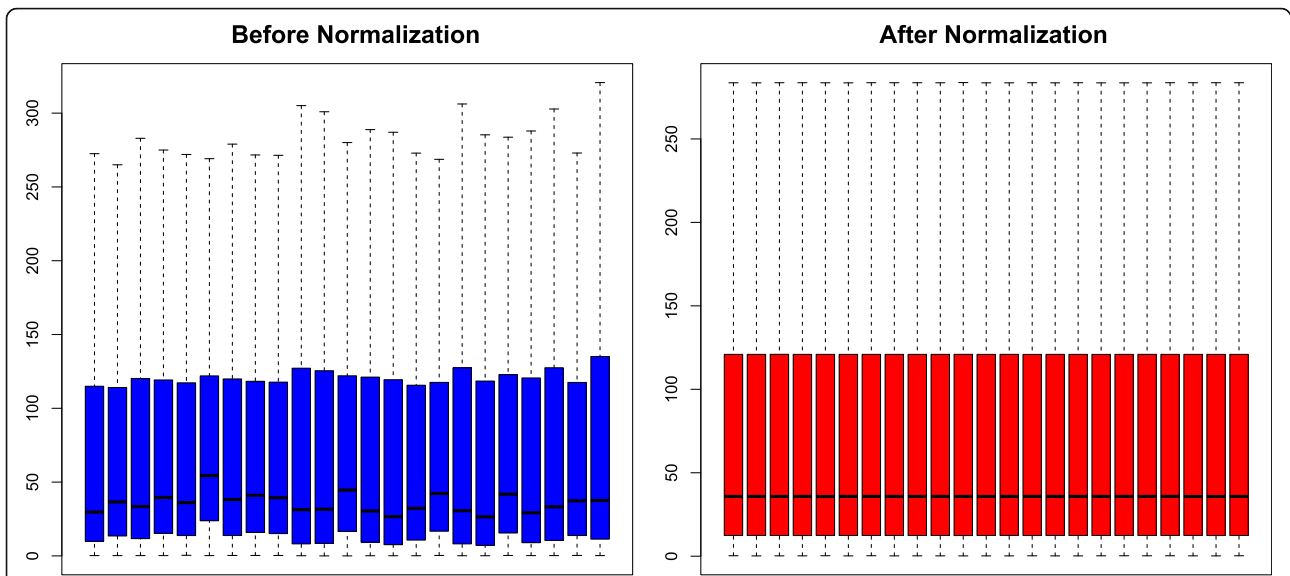


Fig. 1 Comparison of expression value between before normalization and after normalization

Biosystem). Primers used in the qRT-PCR analysis were as follows: CXCR3 forward: 5'-GAAGGTAGGCTGACAGGAAGATGAAGGG-3', CXCR3 reverse: 5'-GAAC TCGAGACCCATAAGGAACCCAAACT-3'; GNB4 forward: 5'-ATGCCTTGCACTGAAAGAAG-3', GNB4 reverse: 5'-ATACGGCTACGCCCTTCTTG-3'; GAPDH

Forward: 5'-CACGAATUATTCAACGGTCGAT CAAGG-3', GAPDH reverse: 5'-GTTACACCCATCA CAAACATGG-3'; CXCL16 forward: 5'-CTTTCA TCGATAGCGCA-3', CXCL16 reverse: 5'-AACGCTTC ACGAATTTGCGT-3'. A ratio relative to the GAPDH was used as internal control.

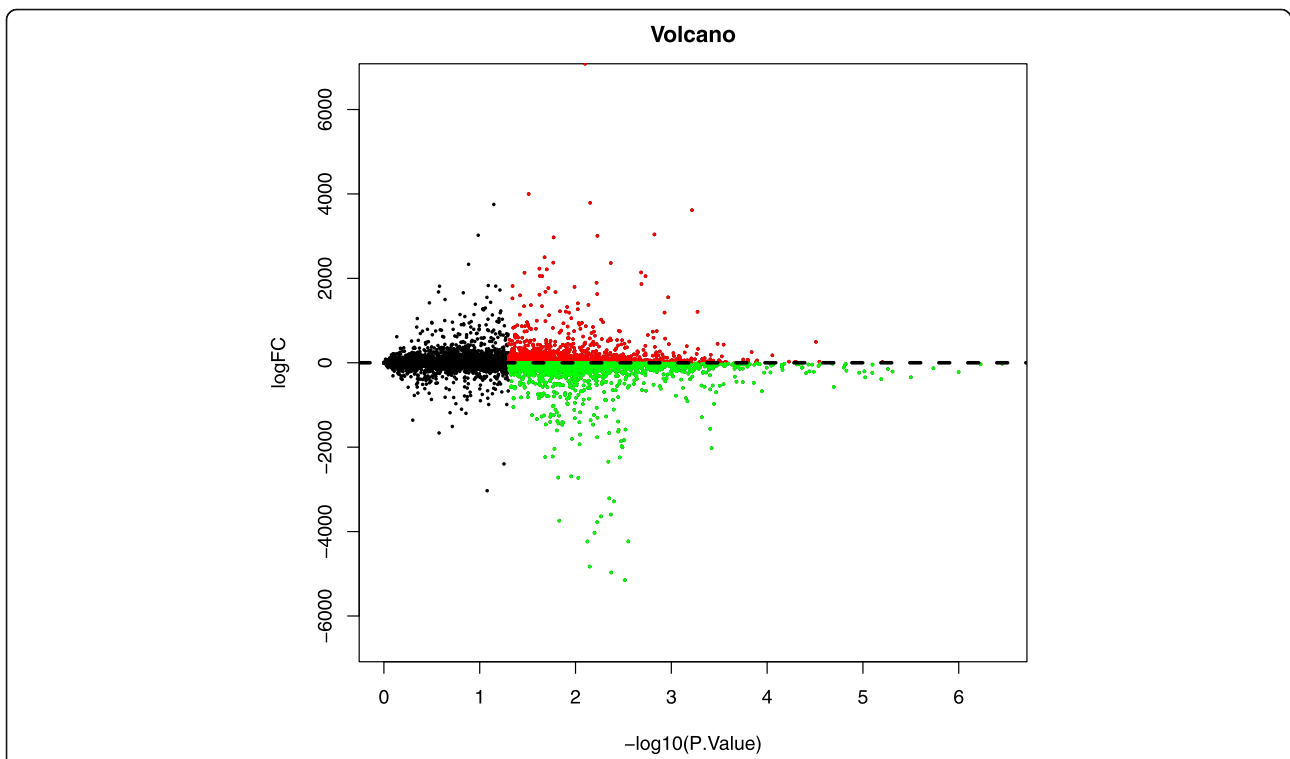
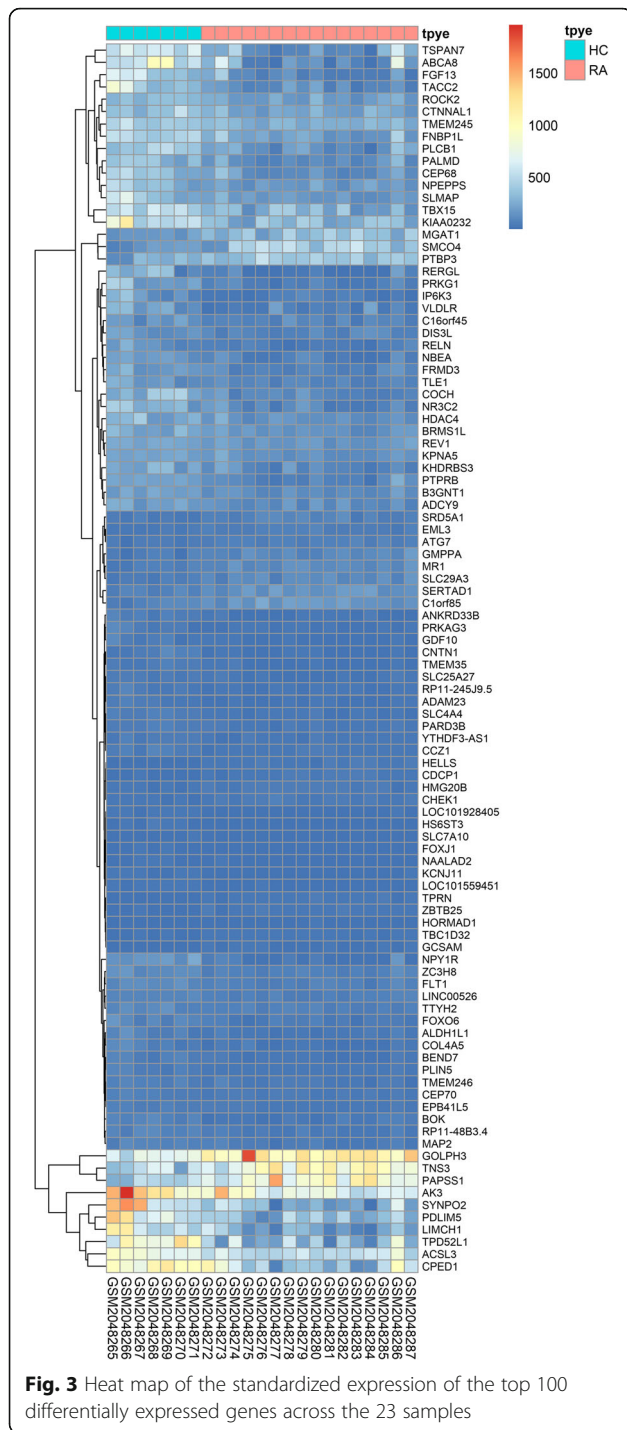


Fig. 2 Volcano plot of the differentially expressed genes; (red) upregulated genes; (green) downregulated genes; and (black) non-differentially expressed genes



Statistical analysis

Each experiment was performed at least three times. All data were expressed as mean ± standard deviation (SD). Statistical analyses were determined by Student’s t test, and the differences between two groups or more than two groups were detected using ANOVA. A *p* value of less than 0.05 was considered statistically significant.

Results

Hierarchical clustering for sample selection

The total samples were analyzed by hierarchical clustering, no samples were with high heterogeneity and eliminated. Finally, 23 samples were included for analysis.

Identification of DEGs

The blue bar represents the data before normalization, and the red bar represents the normalized data. After normalization, Fig. 1 depicts that the log2 ratios in the three pairs of samples are almost identical.

A total of 4062 DEGs were screened out, including 1847 high expression genes and 2215 low expression genes. R was used to make results visualization and draw volcano map (Fig. 2) and heat map (Fig. 3).

GO and KEGG enrichment analysis of DEGs

In GO analysis, DEGs were divided into three categories: biological process, cellular component, and molecular function. In the biological process, DEGs were mainly concentrated in the fields of muscle filament sliding, muscle contraction, intracellular signal transduction, cardiac muscle contraction, signal transduction, skeletal muscle tissue development, sarcomere organization, antigen processing and presentation of peptide antigen via MHC class I, tricarboxylic acid cycle, and regulation of release of sequestered calcium ion into cytosol by sarcoplasmic reticulum (Fig. 4).

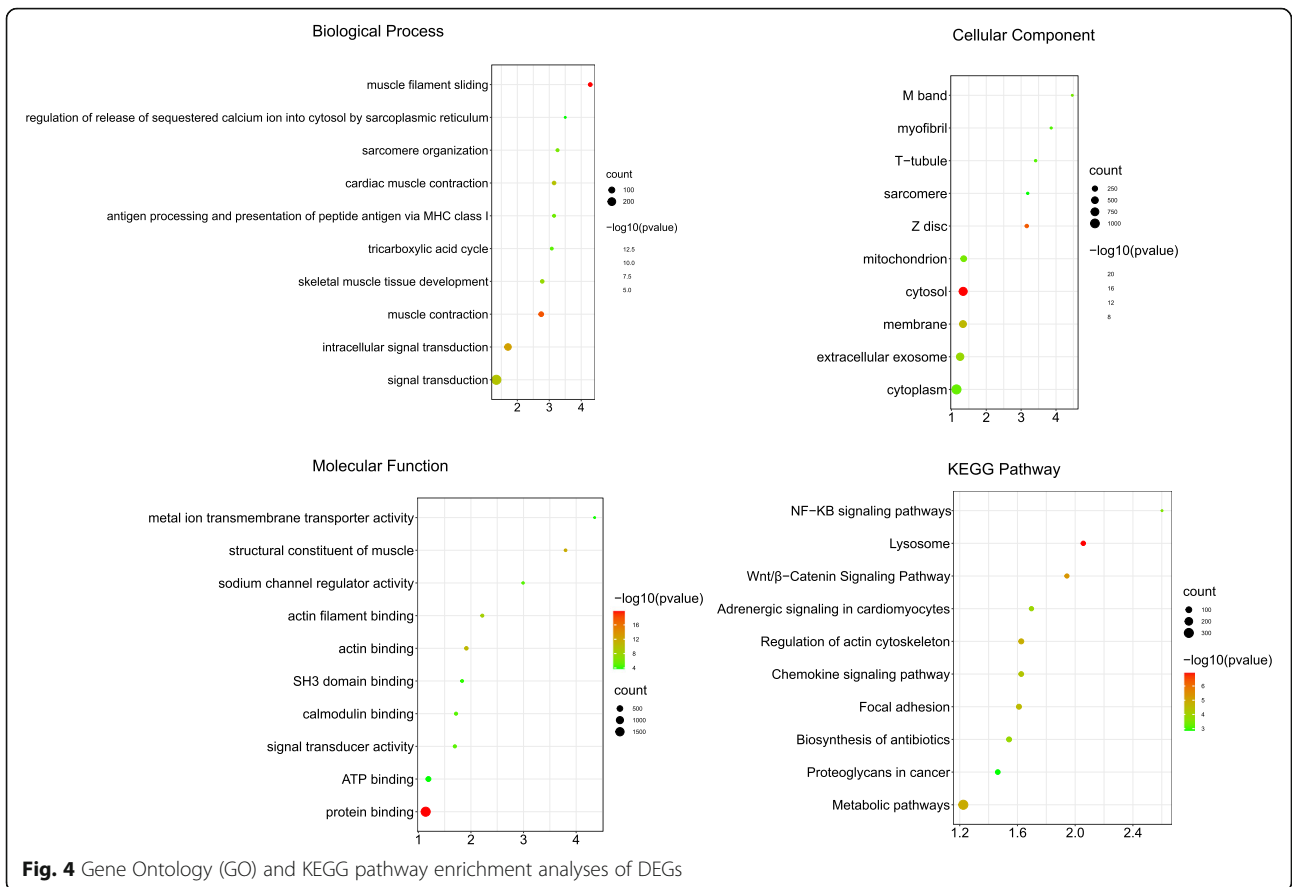
In the cellular components, DEGs were mainly concentrated in the parts of cytosol, Z disk, membrane, extracellular exosome, mitochondrion, M band, cytoplasm, T-tubule, myofibril, sarcomere and so on (Fig. 4).

In molecular functions, DEGs were mainly concentrated in protein binding, structural constituent of muscle, actin binding, actin filament binding, signal transducer activity, calmodulin binding, sodium channel regulator activity, SH3 domain binding, metal ion transmembrane transporter activity, and ATP binding (Fig. 4).

KEGG pathway analysis shows that DEGs mainly focuses on pathways about lysosome, Wnt/β-catenin signaling pathway, metabolic pathways, regulation of actin cytoskeleton, focal adhesion, chemokine signaling pathway, adrenergic signaling in cardiomyocytes, biosynthesis of antibiotics, NF-κB signaling pathway, and proteoglycans in cancer (Fig. 4).

PPI network analysis of DEGs

Protein-protein interaction network with a total of 198 nodes and 356 relationship pairs was obtained, and genes in protein-protein interaction, such as RNF4, CDC20, UBE2D4, and UBE2Q2, were recognized as key nodes in protein-protein interaction (Fig. 5).

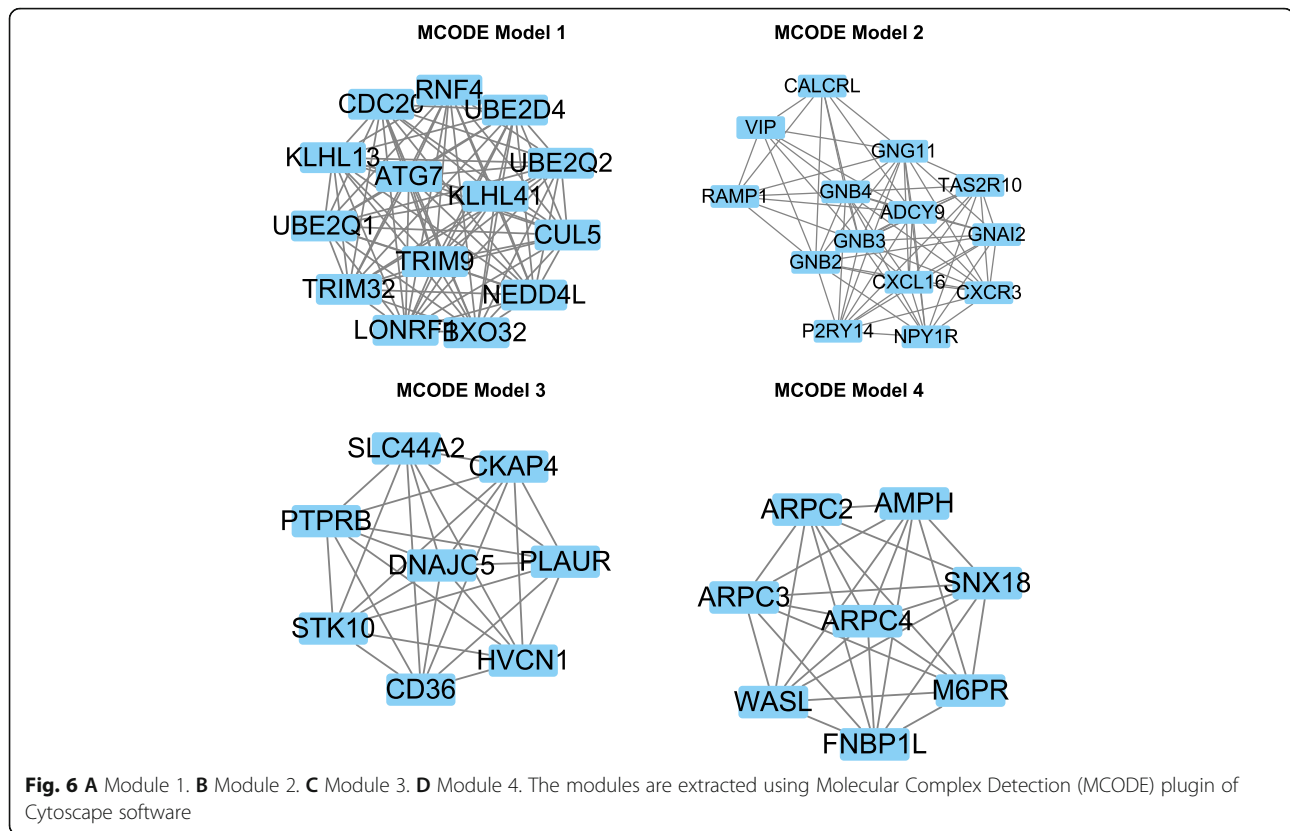


A total of 20 core genes with a degree ≥ 20 selected by MCODE were obtained from the protein-protein network, and they were considered to be candidate core genes. In MCODE model 1, key genes were as follows: RNF4, UBE2D4, UBE2Q2, CUL5, NEDD4L, BXO32, LONRF, TRIM32, UBE2Q1, KLHL13, CDC20, ATG7, KLH41, and TRIM9 (Fig. 6).

In MCODE model 2, key genes were as follows: CALC RL, GNG11, TAS2R10, GNAI2, CXCR3, NYP1R, P2RY14, GNB2, RAMP1, VIP, GNB4, GNB3, CXCL16, and ADCY9.

In MCODE model 3, key genes were as follows: SLC44A2, CKAP4, PLAUR, HVCN1, CD36, STK10, PTPRB, and DNAJC5 (Fig. 6).





In MCODE model 3, key genes were as follows: ARPC2, AMPH, SNX18, M6PR, NBP1L, WASL, APRC3, and APRC4 (Fig. 6).

GSEA

The analysis indicated that the most significant-enriched gene sets included the systemic lupus erythematosus, selenoamino acid metabolism, toll-like receptor signaling pathway, ubiquitin-mediated proteolysis, valine leucine and isoleucine degradation, and cholerae infection (Fig. 7).

PCR

The quantitative PCR (qPCR) results indicated that CXCR3 expression was significantly upregulated in RA synovial tissue compared with healthy control (Fig. 8).

Moreover, GNB4 was significantly upregulated in RA synovial tissue compared with healthy control (Fig. 8).

However, CXCL16 was significantly downregulated in RA synovial tissue compared with healthy control (Fig. 8).

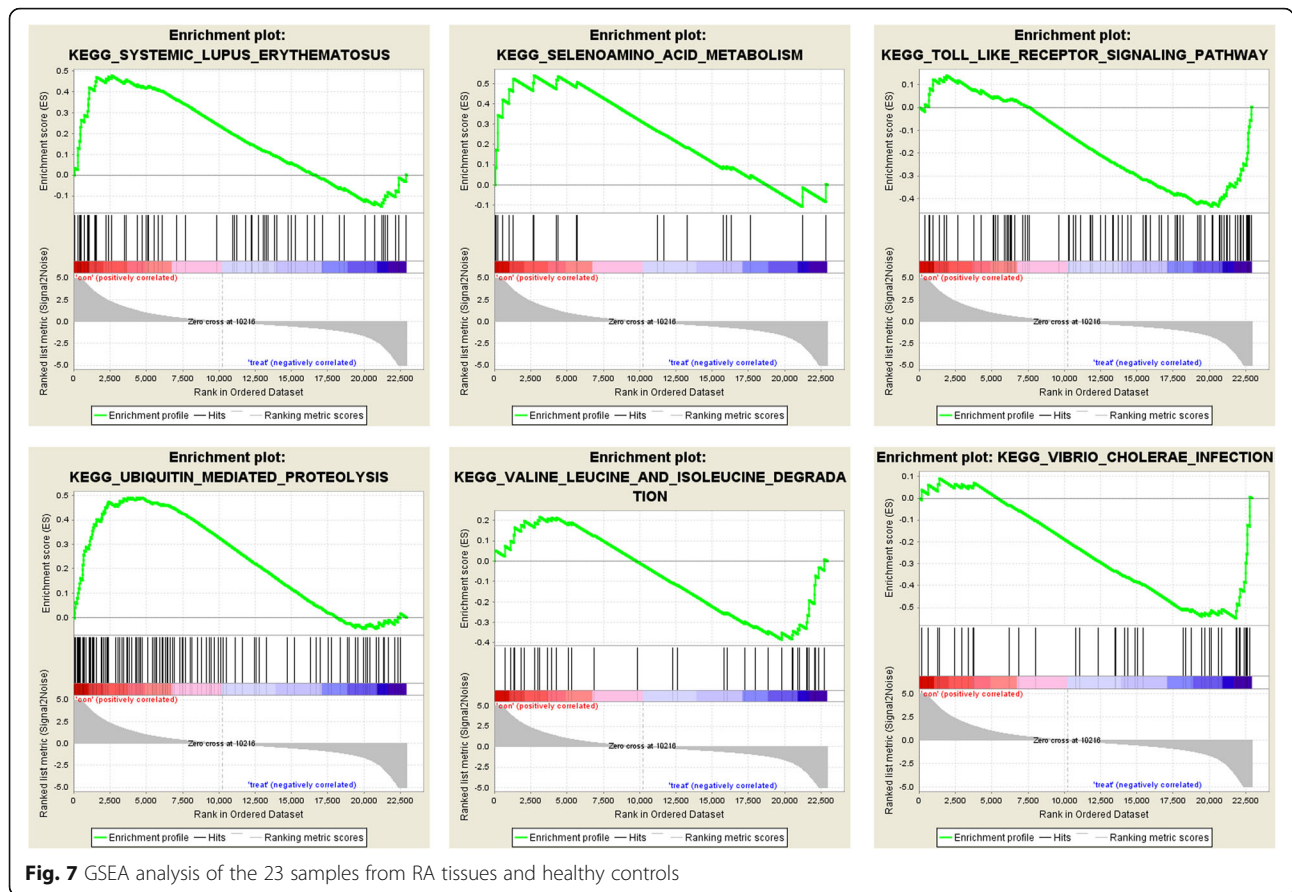
Discussion

In the present study, we analyzed GSE77298 microarray dataset to screen DEGs between end-stage RA synovial biopsies and 16 synovial biopsies from individuals without a joint disease.

GO and KEGG enrichment analyses were performed to explore interactions among the DEGs. CXCR3 was

identified as the core gene that involved into the progression of RA. Bakheet et al. [23] found that CXCR3 antagonist AMG487 suppresses RA pathogenesis and progression by shifting the Th17/Treg cell balance. Therefore, CXCR3 antagonists could be used as a novel strategy for the treatment of inflammatory and arthritic conditions. Another core gene should be noticed is the GNB4. Previous study found that GNB4 can be a candidate diagnostic biomarker in inflammatory bowel diseases [24]. As for CXCL16, we also found that CXCL16 can be as a candidate core gene of RA according to the MCODE analysis. Li et al. [25] revealed that CXCL16 is a modulator of RA disease progression. They performed in vitro study and found that CXCL16 upregulates RANKL expression in RA synovial fibroblasts through the JAK2/STAT3 and p38/MAPK signaling pathway.

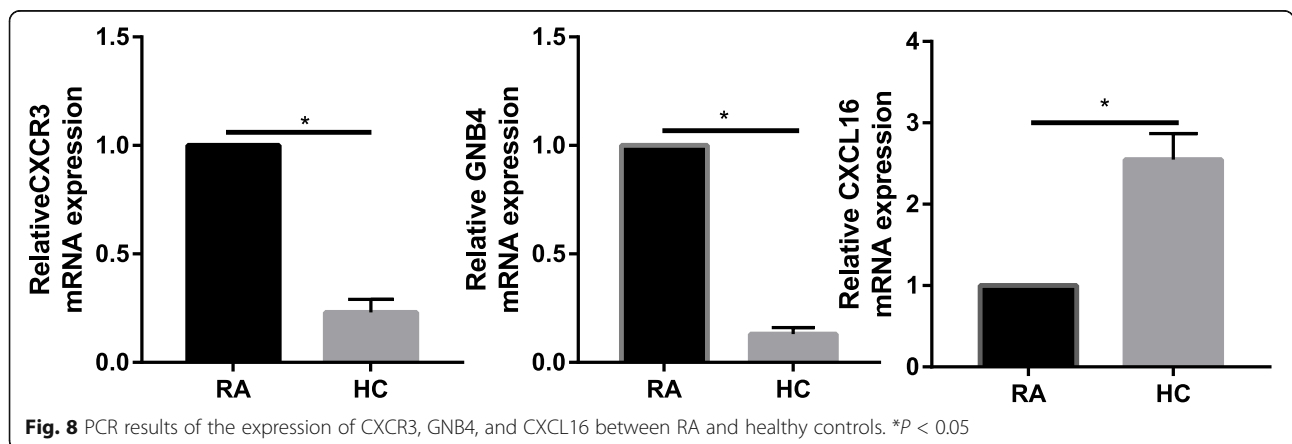
The main innate immune-related signaling pathways include NF- κ B signaling pathway and TRIM32 signaling pathway. Wang et al. [26] found that the TRIM3 expression was significantly downregulated in RA patients than that of the healthy controls. Overexpression of TRIM3 promoted the p53 and p21 expression, while inhibited cyclin D1 and PCNA expression. More importantly, knockdown of TRIM3 expression could partially reversed the inhibition effects of SB203580 (p38 inhibitor) on the inhibition of cell proliferation.



Rheumatoid arthritis is an autoimmune nature joint disease with irreversible cartilage destruction and bone erosion. The DEGs were mainly enriched in muscle filament sliding, muscle contraction, intracellular signal transduction, and cardiac muscle contraction. KEGG pathway analysis shows that DEGs mainly focuses on pathways about lysosome, Wnt/ β -catenin signaling pathway, metabolic pathways, regulation of actin cytoskeleton, focal adhesion, chemokine signaling pathway,

adrenergic signaling in cardiomyocytes, biosynthesis of antibiotics, NF- κ B signaling pathways, and proteoglycans in cancer.

Studies have shown that the development of RA may depend on the common changes in the expression of specific key genes. Xiong et al. [27] revealed that upregulated genes in RA were significantly enhanced in protein binding, the cell cytosol, organization of the extracellular matrix (ECM), regulation of RNA transcription, and cell



adhesion. Shchetynsky et al. [28] revealed that ERBB2, TP53, and THOP1 were new candidate genes in the pathogenesis of RA.

KEGG pathway analysis revealed that NF- κ B signaling pathway involved into the progression of OA. Xing et al. [29] revealed that miR-496/MMP10 is involved in the proliferation of IL-1 β -induced fibroblast-like synovio-cytes via mediating the NF- κ B signaling pathway. The NF- κ B signaling pathway may also have an important role in OA progression because NF- κ B molecule has key role in immune response regulation. In this study, we also found that DEGs mainly enriched into the NF- κ B signaling pathway.

Lysosomes are membrane-bound organelles with roles in processes involved in degrading and recycling cellular waste. In KEGG pathway enrichment analysis, we found that DEGs also enriched into the lysosomes pathway. Lysosomes can be as a therapeutic target for RA [30].

There were some limitations in our study. First, all patients had a pathological diagnosis of RA; however, correlation between DEGs and disease severity did not examine in depth. Second, though we examined the expression of the DEGs between RA and healthy controls, the potential pathway that involved into the RA was not examined. Future studies should be performed to identify the detailed pathway that participated into the progression of RA.

Conclusions

In conclusion, DEGs and hub genes identified in the present study help us understand the molecular mechanisms underlying the progression of RA, and provide candidate targets for diagnosis and treatment of RA.

Abbreviations

RA: Rheumatoid arthritis; GEO: Gene Expression Omnibus; DEGs: Differentially expressed genes; GSEA: Gene set enrichment analysis; GO: Gene Ontology; KEGG: Kyoto Encyclopedia of Genes and Genomes; PPI: Protein-protein interaction; STRING: Search Tool for the Retrieval of Interacting Genes; qRT-PCR: Quantitative real-time polymerase chain reaction; SD: Standard deviation; ECM: Extracellular matrix

Acknowledgements

Not applicable.

Authors' contributions

RW and LL conducted bioinformatic analysis. QZ and JS wrote the original manuscript. WS and JZ as the corresponding authors designed the study and analyzed the datasets. The authors read and approved the final manuscript.

Funding

Not applicable.

Availability of data and materials

The datasets used and/or analyzed during the current study are available from the corresponding author on reasonable request.

Declarations

Ethics approval and consent to participate

Not applicable.

Consent for publication

Not applicable.

Competing interests

The authors declare that they have no competing interests.

Received: 6 June 2021 Accepted: 27 June 2021

Published online: 16 July 2021

References

- Ngian GS. Rheumatoid arthritis. *Aust Fam Physician*. 2010;39(9):626–8.
- Wasserman AM. Diagnosis and management of rheumatoid arthritis. *Am Fam Physician*. 2011;84(11):1245–52.
- McInnes IB, Schett G. The pathogenesis of rheumatoid arthritis. *N Engl J Med*. 2011;365(23):2205–19. <https://doi.org/10.1056/NEJMra1004965>.
- Tufts MH. Rheumatoid arthritis. *Am J Nurs*. 2012;112(3):13. <https://doi.org/10.1097/01.naj.0000412619.42143.95>.
- Scott DL, Wolfe F, Huizinga TW. Rheumatoid arthritis. *Lancet*. 2010;376(9746):1094–108. [https://doi.org/10.1016/s0140-6736\(10\)60826-4](https://doi.org/10.1016/s0140-6736(10)60826-4).
- Kraaijaat FW, Van Dam-Baggen RM, Bijlsma JW. Association of social support and the spouse's reaction with psychological distress in male and female patients with rheumatoid arthritis. *J Rheumatol*. 1995;22(4):644–8.
- Smolen JS, Aletaha D, McInnes IB. Rheumatoid arthritis. *Lancet*. 2016;388(10055):2023–38. [https://doi.org/10.1016/s0140-6736\(16\)30173-8](https://doi.org/10.1016/s0140-6736(16)30173-8).
- Otón T, Carmona L. The epidemiology of established rheumatoid arthritis. *Best Pract Res Clin Rheumatol*. 2019;33(5):101477. <https://doi.org/10.1016/j.berh.2019.101477>.
- Alamanos Y, Voulgari PV, Drosos AA. Incidence and prevalence of rheumatoid arthritis, based on the 1987 American College of Rheumatology criteria: a systematic review. *Semin Arthritis Rheum*. 2006;36:182–8. <https://doi.org/10.1016/j.semarthrit.2006.08.006>.
- Minichiello E, Semerano L, Boissier MC. Time trends in the incidence, prevalence, and severity of rheumatoid arthritis: a systematic literature review. *Joint Bone Spine*. 2016;83(6):625–30. <https://doi.org/10.1016/j.jbspin.2016.07.007>.
- Cross M, Smith E, Hoy D, Carmona L, Wolfe F, Vos T, et al. The global burden of rheumatoid arthritis: estimates from the global burden of disease 2010 study. *Am Fam Physician*. 2014;73(7):1316–22. <https://doi.org/10.1136/aannrheumdis-2013-204627>.
- Alamanos Y, Drosos AA. Epidemiology of adult rheumatoid arthritis. *Autoimmun Rev*. 2005;4(3):130–6. <https://doi.org/10.1016/j.autrev.2004.09.002>.
- Pujades-Rodriguez M, Duyx B, Thomas SL, Stogiannos D, Rahman A, Smeeth L, et al. Rheumatoid arthritis and incidence of twelve initial presentations of cardiovascular disease: a population record-linkage cohort study in England. *PLoS One*. 2016;11(3):e0151245. <https://doi.org/10.1371/journal.pone.0151245>.
- Sato H, Takai C, Kondo N, Kurosawa Y, Hasegawa E, Wakamatsu A, et al. Cumulative incidence of femoral localized periosteal thickening (beaking) preceding atypical femoral fractures in patients with rheumatoid arthritis. *Osteoporos Int*. 2021;32(2):363–75. <https://doi.org/10.1007/s00198-020-05601-y>.
- Manfredi M, Brandi J, Di Carlo C, et al. Mining cancer biology through bioinformatic analysis of proteomic data. *Expert Rev Proteomics*. 2019;16(9):733–47. <https://doi.org/10.1080/14789450.2019.1654862>.
- Huang d W, Sherman BT, Lempicki RA. Systematic and integrative analysis of large gene lists using DAVID bioinformatics resources. *Nat Protoc*. 2009;4(1):44–57. <https://doi.org/10.1038/nprot.2008.211>.
- Feng H, Gu ZY, Li Q, Liu QH, Yang XY, Zhang JJ. Identification of significant genes with poor prognosis in ovarian cancer via bioinformatical analysis. *J Ovarian Res*. 2019;12(1):35. <https://doi.org/10.1186/s13048-019-0508-2>.
- Szklarczyk D, Morris JH, Cook H, Kuhn M, Wyder S, Simonovic M, et al. The STRING database in 2017: quality-controlled protein-protein association networks, made broadly accessible. *Nucleic Acids Res*. 2017;45(D1):D362–d368. <https://doi.org/10.1093/nar/gkw937>.

19. Szklarczyk D, Gable AL, Lyon D, et al. STRING v11: protein-protein association networks with increased coverage, supporting functional discovery in genome-wide experimental datasets. *Nucleic Acids Res.* 2019; 47(D1):D607–d613. <https://doi.org/10.1093/nar/gky1131>.
20. Subramanian A, Tamayo P, Mootha V K, et al. Gene set enrichment analysis: a knowledge-based approach for interpreting genome-wide expression profiles[J]. *Proc Natl Acad Sci U S A.* 2005;102(43):15545–50.
21. Zhao Z, Ma X, Ma J, Sun X, Li F, Lv J. Naringin enhances endothelial progenitor cell (EPC) proliferation and tube formation capacity through the CXCL12/CXCR4/PI3K/Akt signaling pathway. *Chem Biol Interact.* 2018;286: 45–51. <https://doi.org/10.1016/j.cbi.2018.03.002>.
22. Song N, Zhao Z, Ma X, Sun X, Ma J, Li F, et al. Naringin promotes fracture healing through stimulation of angiogenesis by regulating the VEGF/VEGFR-2 signaling pathway in osteoporotic rats. *Chem Biol Interact.* 2017;261:11–7. <https://doi.org/10.1016/j.cbi.2016.10.020>.
23. Bakheet SA, Ansari MA, Nadeem A, Attia SM, Alhoshani AR, Gul G, et al. CXCR3 antagonist AMG487 suppresses rheumatoid arthritis pathogenesis and progression by shifting the Th17/Treg cell balance. *Cell Signal.* 2019;64: 109395. <https://doi.org/10.1016/j.cellsig.2019.109395>.
24. Cheng C, Hua J, Tan J, Qian W, Zhang L, Hou X. Identification of differentially expressed genes, associated functional terms pathways, and candidate diagnostic biomarkers in inflammatory bowel diseases by bioinformatics analysis. *Exp Ther Med.* 2019;18:278–88. <https://doi.org/10.3892/etm.2019.7541>.
25. Li CH, Xu LL, Zhao JX, Sun L, Yao ZQ, Deng XL, et al. CXCL16 upregulates RANKL expression in rheumatoid arthritis synovial fibroblasts through the JAK2/STAT3 and p38/MAPK signaling pathway. *Inflamm Res.* 2016;65(3):193–202. <https://doi.org/10.1007/s00011-015-0905-y>.
26. Wang M, Wu J, Guo Y, Chang X, Cheng T. The tripartite motif-containing protein 3 on the proliferation and cytokine secretion of rheumatoid arthritis fibroblast-like synoviocytes. *Mol Med Rep.* 2017;15(4):1607–12. <https://doi.org/10.3892/mmr.2017.6164>.
27. Xiong Y, Mi BB, Liu MF, et al. Bioinformatics analysis and identification of genes and molecular pathways involved in synovial inflammation in rheumatoid arthritis. *Med Sci Monit.* 2019;25:2246–56. <https://doi.org/10.12659/msm.915451>.
28. Shchetynsky K, Diaz-Gallo LM, Folkersen L, Hensvold AH, Catrina AI, Berg L, et al. Discovery of new candidate genes for rheumatoid arthritis through integration of genetic association data with expression pathway analysis. *Arthritis Res Ther.* 2017;19(1):19. <https://doi.org/10.1186/s13075-017-1220-5>.
29. Xing XW, Shi HY, Liu S, et al. miR-496/MMP10 is involved in the proliferation of IL-1 β -induced fibroblast-like synoviocytes via mediating the NF- κ B signaling pathway. *Inflammation.* 2021. <https://doi.org/10.1007/s10753-021-01421-2>.
30. Bonam SR, Wang F, Muller S. Lysosomes as a therapeutic target. *Nat Rev Drug Discov.* 2019;18(12):923–48. <https://doi.org/10.1038/s41573-019-0036-1>.

Publisher's Note

Springer Nature remains neutral with regard to jurisdictional claims in published maps and institutional affiliations.

Ready to submit your research? Choose BMC and benefit from:

- fast, convenient online submission
- thorough peer review by experienced researchers in your field
- rapid publication on acceptance
- support for research data, including large and complex data types
- gold Open Access which fosters wider collaboration and increased citations
- maximum visibility for your research: over 100M website views per year

At BMC, research is always in progress.

Learn more biomedcentral.com/submissions

