



COMMENTARY

Open Access



Caustic ingestion management: world society of emergency surgery preliminary survey of expert opinion

Yoram Kluger^{1*}, Ofir Ben Ishay¹, Massimo Sartelli², Amit Katz¹, Luca Ansaloni³, Carlos Augusto Gomez⁴, Walter Biffi⁵, Fausto Catena⁶, Gustavo P. Fraga⁷, Salomone Di Saverio⁸, Augustin Goran⁹, Wagih Ghnam¹⁰, Jeffrey Kashuk¹¹, Ari Leppäniemi¹², Sanjay Marwah¹³, Ernest E. Moore¹⁴, Miklosh Bala¹⁵, Damien Massalou¹⁶, Chirica Mircea¹⁷ and Luigi Bonavina¹⁸

Abstract

Caustic material ingestion injuries (CMI) are uncommon. Only 5,000 cases are reported in the United States each year and most acute care healthcare facilities admit only a few cases annually. Accordingly, no single institution can claim extensive experience, and management protocols are most probably based on either expert opinion or literature reports.

In this study, we will attempt to review opinions and practices of representatives of the board members of the World Society of Emergency Surgery and compare them to the current literature.

Introduction/Background

Caustic ingestion may result in significant injury to the entire gastrointestinal tract, but most significantly the upper tract, including the oropharyngeal cavity, larynx, esophagus, and stomach.

The majority (68 %) of cases worldwide involve children as a result of unintentional, accidental ingestion of caustic substances. The remainder of cases reported are adults with psychiatric disturbances, some after suicide attempts, or alcoholics [1, 2].

As expected, the resultant severity of injury in caustic ingestion is determined by the type of ingested substance the amount and the time of tissue exposure.

Due to the substantial morbidity and mortality associated with these injuries, the medical community demanded legislative action. Through persistent efforts, the Federal Caustic Act of 1927 was enacted, requiring appropriate labeling of caustic substances, such as lye. Subsequently, the Poison Prevention Packaging Act of 1970 directed the US Consumer Product Safety Commission to require childproof containers and improved labeling of caustics and other potentially

harmful household products. These legislative acts caused dramatic decline in the occurrence of this type of injury in developed countries. However, in developing countries the incidence is still much higher [3].

While the injury pattern frequently seen in children is usually relatively minor due to smaller amounts ingested, in adults much larger quantities of the caustic substance frequently result in severe injury [3–5].

Injury caused by alkali or acid results in a different injury pattern. For example, alkali causes almost no irritation to the oral cavity, which usually results in larger ingested volumes entering the GI tract. Furthermore, because Alkali materials are thicker, they lead to longer exposure durations in the esophagus, causing progressive injury via liquefactive necrosis.

This process may take as long as two weeks to manifest itself, and is heralded by progressive thinning of the esophagus lining. The stomach and duodenum, on the other hand, are less prone to such injury, due to the neutralizing effect of gastric acids and avoidance of pyloric spasm. Accordingly, maintenance of gastric emptying results in limited exposure of the gastric mucosa to alkali.

In contrast to alkali, acids induce a burning sensation with subsequent pain immediately after contact with oral mucosa; accordingly, the volumes traditionally ingested

* Correspondence: Y_kluger@rambam.health.gov.il

¹Rambam Health Care Center, POB 9602, Haifa 31096, Israel

Full list of author information is available at the end of the article



tend to be small. In addition, since acids lack viscosity, their transit time through the esophagus is rapid.

Subsequently, the duration of exposure to the gastric mucosa is extended due to acid induced pyloric spasm, resulting in acid exposure for protracted periods of time leading to coagulative necrosis. Endogenous gastric secretion is not considered to influence this process [1, 6–8].

Acid ingestion may still cause substantial damage to the esophagus, including perforation [9].

The extent of injury that results from caustic ingestion is estimated by the depth of the resultant caustic burn. First degree burns tend to involve only the mucosa, with localized redness and edema noted at endoscopy. Second degree burns involve the mucosa and sub-mucosa with blister formation evident, while third degree burns are characterized by a transmural process that affects the entire lining with findings of extensive ulceration and necrosis appearing as gangrene [10, 11].

Of note, the clinical findings in caustic ingestion can be highly variable, and often do not correlate with the injury grade noted at endoscopy [12, 13].

Patients with minimal ingestion may be asymptomatic but others may experience oropharyngeal, retrosternal or epigastric pain. Findings of shortness of breath, hoarseness and stridor suggest laryngeal trauma and demand laryngoscopic evaluation. Dysphagia, odynophagia and excessive salivation are suggestive of esophageal damage, abdominal pain; vomiting and hematemesis may suggest gastric damage. Continued pain, peritonitis, tachycardia, persistent leukocytosis, acidosis and pleural effusion should raise the suspicion of perforation (Fig. 1) [14–20].

Ten percent of patients sustaining CMI will experience immediate complication [21, 22]. The most common serious immediate complications after caustic material ingestion therefore include: perforation, bleeding, but late findings include fistula formation (tracheobronchial, gastro colic or even entero-aortic). Reported mortality approaches 10–20 %. Among those sustaining caustic injury in a suicide attempt, mortality may approach 75 %

[6]. The delayed complications include stricture formation (Fig. 2) leading to malnutrition and long term risk of developing malignant transformation.

Although there are few published prospective studies on the management of CMI, the current review will attempt to collate all current reports and expert opinions. This work was done as a preliminary study for a consensus conference on the topic held in Milan, Italy in March 2015.

Method

An e-mail questionnaire was forwarded to all members of the WSES, World Society of Emergency Surgery, consisting of extensive questions pertaining to the diagnosis and treatment of caustic injuries. The question related to various aspects of diagnosis, initial management, surgical and medical treatments as well as questions on individual survey member and institutional experience with caustic ingestion injuries.

As a result of this questionnaire, a detailed literature search was performed in an effort to compare expert opinion with current available literature.

Literature search was designed in four levels and included:

1. Epidemiology, toxicology and pathophysiology of caustic injury.
2. Initial management and emergency interventions.
3. Evaluation of caustic injury – endoscopy, Computerized tomography.
4. Surgical management in the acute and late phase of caustic injury.
5. Early and late complications.

Results

Survey results

General information

Completed survey questionnaires were obtained from the following locations world-wide: Europe 9, Asia 9,

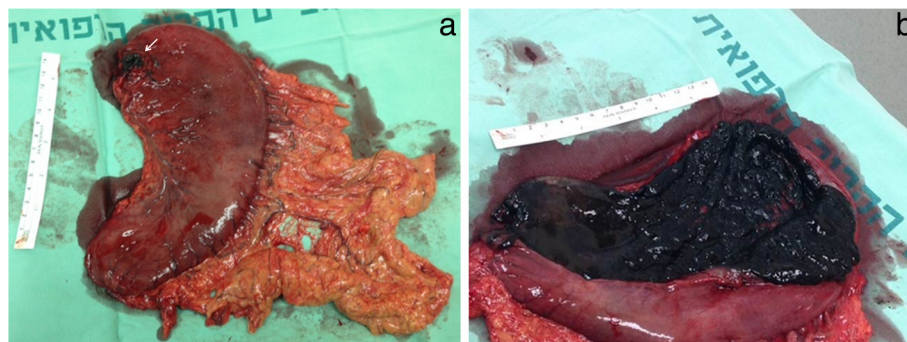


Fig. 1 a: Resected stomach due to perforation (arrow) after caustic material ingestion. Note diffuse thrombosis of gastro-epiolic veins. **b** Stomach opened longitudinally. Note necrosis of gastric mucosa

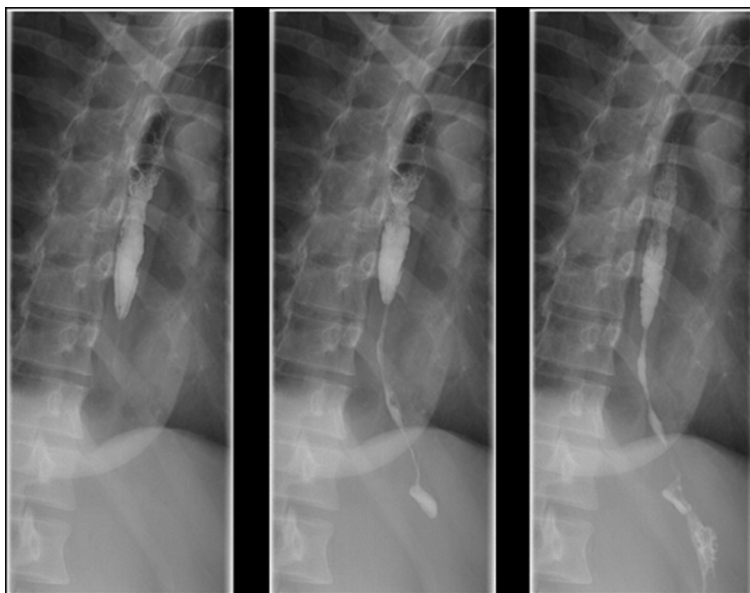


Fig. 2 Barium swallow four month after caustic ingestion injury. Note the long stricture of distal esophagus and gastric cardia. This patient was treated with colonic interposition

South America 4, 3 in North America, 3, and Middle East, 3.

Nineteen of the hospitals that participated in the survey reported treating 1–5 cases annually, while three facilities reported over 15 cases per year. Table 1 shows general background information about the respondents and their associated medical facilities.

Initial assessment and diagnostics

The preliminary treatment and imaging tests practiced by the survey participants is depicted in Table 2.

All survey participants initiated management via orotracheal or naso-tracheal intubation when patients were

Table 1 General information about the work environment of the respondents to the survey

Region	Europe	9	31 %
	Asia	10	34 %
	South America	4	14 %
	North America	3	10 %
	Middle East	3	10 %
Hospital size (beds)	<100	1	3 %
	101-500	9	31 %
	501-1000	10	34 %
	>1001	9	31 %
Cases of CMI encountered per year at hospital	1-5	19	66 %
	6-10	4	14 %
	11-15	3	10 %
	>15	3	10 %

noted to present with obvious signs of dyspnea, stridor or laryngeal edema occurred.

Of those patients who were intubated, 14 % will require ventilator support for over one week. Seventy two percent of respondents placed a nasogastric tube on initial evaluation. Twenty percent of respondents indicated that they would insert a nasogastric tube regardless of initial findings while interestingly, 6 % reported that they would avoid placement of an NG tube in these patients.

Of those placing an NG tube, 67 % suggested the importance of doing so under endoscopic guidance, 45 % reported removing the NG tube after 3 days, while the remainder (55 %) left the tube in place for over a week.

Half of survey participants were reluctant to perform esophagography, while 29 % performed the examination on all patients; 21 % performed the study only on intubated patients.

Eighty three percent performed initial esophagogastroscopy on all patients whereas the other performed the exam only according to clinical presentation or when evidence of oropharyngeal involvement was evident.

Ninety percent of survey participants performed routine chest X-ray regardless of the patient’s underlying respiratory condition. The remaining performed a CXR based upon clinical indications. Twenty nine percent of respondents routinely ordered CT scan on all patients, but the remaining group performed this test only when signs of peritoneal irritation or suspected perforation were noted.

Table 2 Means of initial assessment and diagnostics of CMI, according to the survey respondents

Initial assessment			
Intubation	Dyspnea, stridor, edema	29	100 %
Extubation	Based on respiratory condition	25	86 %
	>7 days	4	14 %
	Nasogastric tube	All patients	6
Nasogastric tube	No patients	2	7 %
	Based on endoscopy findings or evidence of oropharyngeal injury	21	72 %
	Insertion during endoscopy	20	67 %
	Insertion without endoscopy	9	33 %
	Nasogastric tube removal after >3 days	13	45 %
	Nasogastric tube removal after >7 days	16	55 %
	Imaging		
Esophagography	Not performed	14	50 %
	Performed on all patients	8	29 %
	Performed only on non-intubated patients	6	21 %
Esophagogastrosocopy	All patients	24	83 %
	Signs of oropharyngeal injury	3	10 %
	According to clinical development	2	7 %
	Within 12 h	19	66 %
	12-24 h	8	28 %
	Over 24 h	2	7 %
Thoracic radiology	Level of injury	17	59 %
	All patients	26	90 %
	Based on respiratory condition	3	10 %
CT	All patients	8	29 %
	Patients developing signs of peritoneal irritation or suspected perforation	20	71 %

Treatment

The treatment provided by survey participants is presented in Tables 3 4 and 5.

Twenty five percent of respondents administered steroids to all patients, while 29 % admistered those to patients noted to have associated second degree burns. Forty six percent of the respondents stated that they did not admister steroids in any case. Thirty four percent of respondents administered antibiotics to all patients, while 34 % suggested such a need for those patients suffering second degree burns and 32 % administered antibiotics to patients requiring surgical intervention.

All participants proceeded to urgent surgical intervention when there were signs of peritonitis, free air, or

Table 3 The use of medical treatment for CMI, according to survey respondents

Medical treatment			
Steroids	All patients	7	25 %
	No patients	13	46 %
	Depending on the depth of injury	8	29 %
Antibiotics	All patients	10	34 %
	Only patients requiring urgent surgery	9	32 %
	Depending on the depth of injury	10	34 %

esophageal perforation a small group (3 %) said they would suggest surgical intervention in the face of extensive third degree injury. Of those proceeding to surgical intervention, 52 % performed a traditional laparotomy, while 48 % consider a laparoscopic approach. The decision to perform restorative surgery was generally based upon patient stability: 31 % of respondents attempted restorative procedures at the initial operation, while the remaining majority deferred such extensive procedures until later time frames.

Twenty four percent of respondents performed initial endoscopic treatment of short or long stricture, deferring surgical intervention for treatment failures. The majority of respondents (76 %), attempted endoscopic management of short strictures, but felt that longer strictures would require surgical intervention.

Discussion

The diagnosis and treatment of caustic ingestion injuries has received only a modicum of attention in the literature. Furthermore, our review has identified only three randomized control trials addressing the effectiveness of steroid treatment [23–25]. Accordingly, the current relevant literature consists primarily of retrospective research and case studies.

The paucity of experience with this entity at any one center is evident from the finding that 80 % of our survey respondents treat fewer than 10 cases per year.

Table 4 The use of surgical intervention for CMI, according to survey respondents

Surgical intervention			
Surgery indication	Peritonitis, free air, peritoneal free fluid	29	100 %
	Depending on depth	3	10 %
Surgical approach	Laparotomy	15	52 %
	Possible laparoscopy	14	48 %
Reconstruction	Not perform urgent surgery	20	69 %
	If patient is stable, perform urgent surgery	9	31 %

Table 5 Treatment of strictures

Treatment of stricture	Endoscopy attempt if stricture is short	22	76 %
	Endoscopy attempt for short and long strictures	7	24 %

Based on these findings, we believe that patients should be enrolled in well designed, prospective data bases; furthermore, in order to establish evidence based guidelines, a current management algorithm should be constructed based upon available knowledge.

Diagnosis and initial treatment

The initial approach to management should involve careful assessment of the extent of injury. Hence, it is important to document the type of ingested material, quantity ingested, and an attempt to estimate the exposure duration in the various organs.

A careful assessment of symptoms is paramount. Complaints of dyspnea, dysphagia, excessive salivation, hematemesis or hoarseness suggest severe injury [27]. Although laboratory tests do not always correlate with severe injury, leukocytosis >20,000 wbc/ml, elevated CRP and pH <7.2 corroborate extent and severity of injury [1, 27–29]. Hypocalcemia may follow the ingestion of hydrogen fluoride.

Forty percent of patients suffer injury to the upper respiratory tract, and approximately 5–15 % suffers significant dyspnea, stridor or laryngeal edema, dictating immediate intubation due to imminent air way compromise [30, 31].

Initial chest X-ray may identify pneumoperitoneum, pleural effusion or pneumomediastinum. Such radiologic findings may also hint at the presence of perforation. Recent experience supports the accuracy of CT scan as a diagnostic tool with 75 % sensitivity and 90 % specificity in determining injury grade, need for surgical intervention and ability to predict complications such as stricture [32–35]. The CT injury grading system of Ryu HH et al. is based on the extent of esophageal lining edema, turbidity, paraesophageal tissue and fat hernia and presence of pleural fluid or pneumomediastinum [35].

A recent study by Lurie Y et al. demonstrated that the specificity of CT in predicting the need for operative intervention and even eventual mortality as high as was > 90 % but with sensitivity of only 30–40 %. On the basis of these facts, these authors concluded that early endoscopy may not be replaced by CT [36].

Early endoscopy (within 12–24 h following ingestion) permits careful assessment of anatomic derangements, serving as a valuable aide in decision making in order to guide the need for further interventions. Delayed endoscopy (>48 h) should be avoided due to increased risk of perforation as the resultant of tissue edema and

inflammation. The grade of injury based upon careful endoscopic assessment and physical examination appears to be closely correlated with the degree of urgency for surgical intervention, the development of subsequent complications and eventual mortality [11, 37–40]. In a series by Zarger SA et al., the authors noted that all patients who succumbed to their injury had grade III burns. Furthermore, those with grade IIb and III who survived developed late complications. Lastly, with the finding of an IIa or lesser grade burn portended a complication free clinical course [11]. While III degree burns generally suggest the need for urgent surgical intervention, it should be noted that, gastrectomy or esophagectomy based on endoscopy findings alone may lead to 10–15 % unnecessary surgical procedures [33, 34, 43]. Despite these findings and the correlation of the burn depth to outcome it is interesting to note that <60 % of our respondents stated that they consistently used the injury grading assessment.

When endoscopy under anesthesia is performed by a qualified team, the risk of perforation is low and the procedure can be completed even in the presence of second or third degree burns [40–42]. It is important to avoid over-inflation of the esophagus, and also important to note that it is not always possible to pass through the burn area, and may be difficult to assess the degree of burn beyond the furthest point of view of the endoscope [1].

While it is important to maintain a high degree of suspicion during workup, it should be emphasized that upwards of 10–30 % of patients may not have damage to the esophagus or stomach; accordingly, one could argue that routine endoscopy may be unnecessary [14, 44]. In a similar way, in the pediatric population, evidence suggests that the risk of significant damage to the esophagus or stomach in those children who are asymptomatic is <2 %. Accordingly, in the pediatric group, routine endoscopy should be avoided [26, 45].

Current contraindications for esophagoscopy are obvious, overt perforation, supraglottic or epiglottic burn with edema and third degree burns in the hypopharynx [14]. Under such conditions, CT should suffice. The result of our study suggested that half the respondents were in favor of contrast studies. In the acute stage of CMI water contrast medium should be used. Barium contrast studies may be of help in evaluating stricture formation and their length in a later stage.

Recently, Endoscopic Ultrasonography (EUS) has been suggested as a helpful adjunct to evaluate patients with MCI presented for the evaluation of patients. Such an evaluation, when performed by a skilled technician, allows for excellent assessment of the degree of burn and provides for precise assessment of the depth of esophageal injury. At the current time, however, the procedure has not demonstrated an advantage in predicting immediate complications, the need of surgery and subsequent

development of stricture [47–49]. Accordingly, at the current time, EUS is not being extensively used in these patients [45–50].

Regarding the use of NG tube in patients with suspected injury, our survey results suggest that 93 % inserted a nasogastric tube when evidence exists for oropharyngeal injury or when endoscopy suggests significant injury, while 7 % avoided placement of an NG tube in any scenario. Among those who supported this practice, 67 % preferred to do so while performing endoscopy. The theoretical advantage of this practice is to serve as a stent, to maintain luminal integrity, minimize stricture formation, and provide a continuous route for enteral nutrition. Of note, a number of studies have suggested that leaving the nasogastric tube for 1-2 weeks after a grade 2b or over burns reduces the need for late stricture dilatation [51–53]. Furthermore, a theoretical disadvantage, is that prolonged use of the tube could actually promote stricture formation due to fibrosis around the tube [14].

Our survey did not demonstrate any solid consensus regarding antibiotic use in this patient group. About one third of respondents indicated that they administered prophylactic antibiotics to all patients, while one third suggested using antibiotics only to those patients undergoing urgent surgery. The remaining group administered antibiotics based on the severity of the burn. Interestingly, an unproven “surgical myth” which originated in a manuscript over 60 years ago suggested that use of antibiotics in the acute phase of burn reduced stricture formation [55]. In sum, the most common current practice from our survey results appears to be administration of antibiotics only when active infection is suspected or when steroid treatment is contemplated [55–59].

There was no consensus among survey respondents regarding administration of steroids. 45 % of respondents did not administer steroids in any case, while 25 % routinely gave steroids to patients with caustic injuries. 30 % recommended administration selectively to those patients sustaining high-degree burns. Although unproven clinically, the theoretical basis for steroid administration in this group is to reduce collagen formation via alteration of fibronectin and m cytokine pathways leading to reduced stricture formation [60]. Of note, certain animal studies do suggest such an advantage, while clinical trials have failed to provide any convincing data [61–63]. One study in 1990 compared children who received prednisolone 2 mg/kg to a control group, and failed to demonstrate any reduction in stricture formation [64]. Of note, one study showed that the combined use of antibiotics, steroids and early dilation failed to reduce stricture formation and actually increased the risk of perforation [65].

This issue, however, remains far from settled. Two more recent randomized trials showed that dexamethasone (1 mg/Kg/day) as opposed to prednisolone (2 mg/Kg/day) reduced stricture formation, while another recent report showed that a combination of methylprednisolone (1 g/1.73 m² per day for 3 days), Ranitidine, Ceftriaxone, and total parenteral nutrition resulted in 10–15 % stricture formation, while a group receiving the same treatment, but without methylprednisolone, resulted in upwards of 30–45 % stricture formation. In sum, all of these studies are primarily in children and suffer from limited sample size [66, 67].

Based upon the results of several meta-analyses current clinical practice suggests limiting the use of steroids to those patients with established respiratory tract edema [68, 69].

There was general agreement by all respondents that signs of peritonitis and presence of pneumoperitoneum and/or perforation of the esophagus are indications for immediate surgical intervention. Similarly, most respondents suggested that any clinical or radiological evidence of perforation also dictated urgent operation. Another late indication for urgent surgical intervention that should be recognized is bleeding due to necrosis developing several days after the initial admission [70–72]. Other abnormalities which may accompany later clinical deterioration and suggest the need for surgical intervention include: persistent acidosis, renal failure, or extensive burns requiring endoscopic evaluation [72, 73]. While most respondents performed laparotomy, initial laparoscopy was also mentioned as a viable alternative in the more stable patient, but is clearly operator dependent based upon the skill set and experience of the surgeon, as thorough exploration of



Fig. 3 Pre-pyloric stricture explored during delayed reconstructive surgery after caustic ingestion injury

the stomach and duodenum may be quite difficult for the novice laparoscopist. With sufficient skill, however, laparoscopy can be a valuable adjunct for the assessment of grade 2 or higher gastric injuries [74, 75, 77] accordingly, avoidance of gastric resection may be possible in the absence of significant damage [76]. A large esophageal perforation (rare) may require emergency esophagectomy along with cervical esophagostomy and gastrostomy whereas gastric perforation is managed with gastric resection. The need for emergency esophago-gastrostomy is rare. An additional feeding jejunostomy might prove life-saving in such cases for the purpose enteral feeding since definitive reconstruction is possible only when injury is healed and patient is stabilized [54] (Fig. 3).

As is shown in our survey of expert opinion inconsistencies exist in regard to diagnosis and management of CIM injuries. Paradigm shifts in treatment strategies to conservative, non-operative approaches including percutaneous drainage of pleural effusions, collections or abscesses [78, 79] is perceived and indicate the need for further studies and evaluation of the current knowledge.

A further evidence based CIM management consensus initiative is indicated.

Competing interests

The authors declare that they have no competing interests

Authors' contributions

YK conceived of the study and participated in its design and coordination and helped to draft the manuscript, OBI, MS, participated in the design of the study and performed data collection, AK, JK helped to draft the manuscript, LA, CA, WB, FC, GPF, SDS, AG, WG, AL, SM, EEM, MB, DM, CM and LB critically reviewed the manuscript and participated in data acquisition. All authors read and approved the final manuscript.

Author details

¹Rambam Health Care Center, POB 9602, Haifa 31096, Israel. ²Department of Surgery, Macerata Hospital, Macerata, Italy. ³Papa Giovanni XXIII Hospital, Bergamo, Italy. ⁴Hospital Universitário Therezinha de Jesus, Faculdade de Ciências Médicas e da Saúde de Juiz de Fora (SUPREMA), Universidade Federal de Juiz de Fora (UFJF), Minas Gerais, Juiz de Fora, Brazil. ⁵Department of Surgery, University of Florida, Gainesville, Florida, USA. ⁶Parma University Hospital, Parma, Italy. ⁷Faculdade de Ciências Médicas (FCM), Unicamp Campinas, Juiz de Fora, Brazil. ⁸Ospedale Maggiore Carlo Albert, Bologna, Italy. ⁹Department of Surgery, University Hospital Center, Zagreb, Croatia. ¹⁰Mansoura Faculty of Medicine, Mansoura University Egypt, Mansoura, Egypt. ¹¹Assia Medical Group, Assuta Medical Centers, Tel Aviv, Israel. ¹²Meilahti Hospital, Helsinki, Finland. ¹³Department of Surgery, Post-graduate Institute of Medical Sciences, Rohtak, India. ¹⁴Department of Surgery, Denver Health Medical Center, Denver, USA. ¹⁵Hadassah - Hebrew University Medical Center, Jerusalem, Israel. ¹⁶Hôpital St Roch 5, Université Nice Sophia-Antipolis, Nice, France. ¹⁷Department of General, Endocrine and Digestive Surgery, Saint-Louis Hospital, Université Paris, Paris, France. ¹⁸Policlinico San Donato, University of Milan School of Medicine, Milan, Italy.

Received: 27 July 2015 Accepted: 9 October 2015

Published online: 16 October 2015

References

- Gumaste W, Dave PB. Ingestion of corrosive substances by adults. *Am J Gastroenterol.* 1992;87:1-5.
- Watson WA, Litovitz TL, Rodgers GC, Klein-Schwartz W, Reid N, Youniss J, et al. 2004 annual report of the american association of poison control centers toxic exposure surveillance system. *Am J Emerg Med.* 2005;23:589-666.
- Dantas RO, Mamede RC. Esophageal motility in patients with esophageal caustic injury. *Am J Gastroenterol.* 1996;91:1157-61.
- McAuley CE, Steed DL, Webster MW. Late sequelae of gastric acid injury. *Am J Surg.* 1985;149:412-5.
- Mamede RC, de Mello Filho FV. Ingestion of caustic substances and its complications. *Sao Paulo Med J.* 2001;119:10-5.
- Ertekin C, Alimoglu O, Akyildiz H, Guloglu R, Taviloglu K. The results of caustic ingestions. *Hepatogastroenterology.* 2004;51:1397-400.
- Estrera A, Taylor W, Mills LJ, Platt MR. Corrosive burns of the esophagus and stomach: a recommendation for an aggressive surgical approach. *Ann Thorac Surg.* 1986;41:276-83.
- Sugawa C, Lucas CE. Caustic injury of the upper gastrointestinal tract in adults: a clinical and endoscopic study. *Surgery.* 1989;106:802-6. discussion 806-807.
- Poley JW, Steyerberg EW, Kuipers EJ, Dees J, Hartmans R, Tilanus HW et al. Ingestion of acid and alkaline agents: outcome and prognostic value of early upper endoscopy. *Gastrointest Endosc.* 2004;60:372-7.
- Di Costanzo J, Noirclerc M, Jouglaud J, Escoffier JM, Cano N, Martin J, et al. New therapeutic approach to corrosive burns of the upper gastrointestinal tract. *Gut.* 1980;21:370-5.
- Zargar SA, Kochhar R, Mehta S, Mehta SK. The role of fiberoptic endoscopy in the management of corrosive ingestion and modified endoscopic classification of burns. *Gastrointest Endosc.* 1991;37:165-9.
- Haller JA, Andrews HG, White JJ, Tamer MA, Cleveland WW. Pathophysiology and management of acute corrosive burns of the esophagus: results of treatment in 285 children. *J Pediatr Surg.* 1971;6:578-84.
- Gaudreault P, Parent M, McGuigan MA, Chicoine L, Lovejoy FH. Jr. Predictability of esophageal injury from signs and symptoms: a study of caustic ingestion in 378 children. *Pediatrics.* 1983;71:767-70.
- Ramasamy K, Gumaste W. Corrosive ingestion in adults. *J Clin Gastroenterol.* 2003;37:119-24.
- Havanond C, Havanond P. Initial signs and symptoms as prognostic indicators of severe gastrointestinal tract injury due to corrosive ingestion. *J Emerg Med.* 2007;33:349-53.
- Zargar SA, Kochhar R, Nagi B, Mehta S, Mehta SK. Ingestion of strong corrosive alkalis: spectrum of injury to upper gastrointestinal tract and natural history. *Am J Gastroenterol.* 1992;87:337-41.
- Chaudhary A, Puri AS, Dhar P, Reddy P, Sachdev A, Lahoti D, et al. Elective surgery for corrosive-induced gastric injury. *World J Surg.* 1996;20:703-6. discussion 706.
- Ceylan H, Ozokutan BH, Gündüz F, Gözen A. Gastric perforation after corrosive ingestion. *Pediatr Surg Int.* 2011;27:649-53.
- Ananthkrishnan N, Parthasarathy G, Kate V. Acute corrosive injuries of the stomach: a single unit experience of thirty years. *ISRN Gastroenterol.* 2011;2011:914013.
- Tseng YL, Wu MH, Lin MY, Lai WW. Massive upper gastrointestinal bleeding after acid-corrosive injury. *World J Surg.* 2004;28:50-4.
- Sarfati E, Gossot D, Assens P, Celerier M. Management of caustic ingestion in adults. *Br J Surg.* 1987;74:146-8.
- Berthet B, Castellani P, Briocche MI, Assadourian R, Gauthier A. Early operation for severe corrosive injury of the upper gastrointestinal tract. *Eur J Surg.* 1996;162:951-5.
- Anderson KD, Rouse TM, Randolph JG. A controlled trial of corticosteroids in children with corrosive injury of the esophagus. *N Engl J Med.* 1990;323(10):637-40.
- Bautista A, Varela R, Villanueva A. Effects of prednisolone and dexamethasone in children with alkali burns of the oesophagus. *Eur J Pediatr Surg.* 1996;6(4):198-203.
- Usta M, Erkan T, Cokugras FC. High doses of methylprednisolone in the management of caustic esophageal burns. *Pediatrics.* 2014;133(6):E1518-24.
- Betalli P, Falchetti D, Giuliani S. Caustic ingestion in children: is endoscopy always indicated? The results of an Italian multicenter observational study. *Gastrointest Endosc.* 2008;68(3):434-9.
- Rigo GP, Camellini L, Azzolini F, Guazzetti S, Bedogni G, Merighi A, et al. What is the utility of selected clinical and endoscopic parameters in predicting the risk of death after caustic ingestion? *Endoscopy.* 2002;34:304-10.
- Cheng YJ, Kao EL. Arterial blood gas analysis in acute caustic ingestion injuries. *Surg Today.* 2003;33:483-5.
- Katzka DA. Caustic injury to the esophagus. *Curr Treat Options Gastroenterol.* 2001;4:59-66.

30. Turner A, Robinson P. Respiratory and gastrointestinal complications of caustic ingestion in children. *Emerg Med J*. 2005;22(5):359–61.
31. Adam O, Harvey JG, Holland AJA. Pediatric upper aero-digestive and respiratory tract burns. *Int J Burns Trauma*. 2013;3(4):209–13.
32. Ananthkrishnan N, Parthasarathy G, Kate V. Acute corrosive injuries of the stomach: a single unit experience of thirty years. *ISRN Gastroenterol*. 2011;2011:914013.
33. Keh SM, Onyekwelu N, McManus K, McGuigan J. Corrosive injury to upper gastrointestinal tract: Still a major surgical dilemma. *World J Gastroenterol*. 2006;12:5223–8.
34. Isbister GK, Page CB. Early endoscopy or CT in caustic injuries: a re-evaluation of clinical practice. *Clin Toxicol (Phila)*. 2011;49:641–2.
35. Ryu HH, Jeung KW, Lee BK, Uhm JH, Park YH, Shin MH, et al. Caustic injury: can CT grading system enable prediction of esophageal stricture? *Clin Toxicol (Phila)*. 2010;48:137–42.
36. Lurie Y, Slotky M, Fischer D, Shreter R, Bentur Y. The role of chest and abdominal computed tomography in assessing the severity of acute corrosive ingestion. *Clin Toxicol (Phila)*. 2013;51(9):834–7.
37. Poley JW, Steyerberg EW, Kuipers EJ, Dees J, Hartmans R, Tilanus HW, et al. Ingestion of acid and alkaline agents: outcome and prognostic value of early upper endoscopy. *Gastrointest Endosc*. 2004;60:372–7.
38. Previtera C, Giusti F, Guglielmi M. Predictive value of visible lesions (cheeks, lips, oropharynx) in suspected caustic ingestion: may endoscopy reasonably be omitted in completely negative pediatric patients? *Pediatr Emerg Care*. 1990;6:176–8.
39. Tekant G, Eroğlu E, Erdoğan E, Yeşildağ E, Emir H, Büyükcinal C, et al. Corrosive injury-induced gastric outlet obstruction: a changing spectrum of agents and treatment. *J Pediatr Surg*. 2001;36:1004–7.
40. Hawkins DB, Demeter MJ, Barnett TE. Caustic ingestion: controversies in management. A review of 214 cases. *Laryngoscope*. 1980;90:98–109.
41. Contini S, Tesfaye M, Picone P, Pacchione D, Kuppers B, Zambianchi C, et al. Corrosive esophageal injuries in children. A shortlived experience in Sierra Leone. *Int J Pediatr Otorhinolaryngol*. 2007;71:1597–604.
42. Baskin D, Urganci N, Abbasoğlu L, Alkim C, Yalçın M, Karadağ C, et al. A standardised protocol for the acute management of corrosive ingestion in children. *Pediatr Surg Int*. 2004;20:824–8.
43. Chirica M, Resche-Rigon M, Bongrand NM, Zohar S, Halimi B, Gornet JM, et al. Surgery for caustic injuries of the upper gastrointestinal tract. *Ann Surg*. 2012;256:994–1001.
44. Núñez O, González-Asanza C, de la Cruz G, Clemente G, Bañares R, Cos E, et al. Study of predictive factors of severe digestive lesions due to caustics ingestion. *Med Clin (Barc)*. 2004;123:611–4.
45. Aronow SP, Aronow HD, Blanchard T, Czinn S, Chelimsky G. Hair relaxers: a benign caustic ingestion? *J Pediatr Gastroenterol Nutr*. 2003;36:120–5.
46. Gupta SK, Croffie JM, Fitzgerald JF. Is esophagogastroduodenoscopy necessary in all caustic ingestions? *J Pediatr Gastroenterol Nutr*. 2001;32:50–3.
47. Chiu HM, Lin JT, Huang SP, Chen CH, Yang CS, Wang HP. Prediction of bleeding and stricture formation after corrosive ingestion by EUS concurrent with upper endoscopy. *Gastrointest Endosc*. 2004;60:827–33.
48. Kamijo Y, Kondo I, Kokuto M, Kataoka Y, Soma K. Miniprobe ultrasonography for determining prognosis in corrosive esophagitis. *Am J Gastroenterol*. 2004;99:851–4.
49. Rana SS, Bhasin DK, Nanda M, Siyad I, Gupta R, Kang M, et al. Endoscopic transpapillary drainage for external fistulas developing after surgical or radiological pancreatic interventions. *J Gastroenterol Hepatol*. 2010;25:1087–92.
50. Bonnici KS, Wood DM, Dargan PI. Should computerised tomography replace endoscopy in the evaluation of symptomatic ingestion of corrosive substances? *Clin Toxicol (Phila)*. 2014;16:1–15. Bonnici KS¹, Wood DM, Dargan PI.
51. Mamede RC, De Mello Filho FV. Treatment of caustic ingestion: an analysis of 239 cases. *Dis Esophagus*. 2002;15:210–3.
52. Wijburg FA, Beukers MM, Heymans HS, Bartelsman JF, den Hartog Jager FC. Nasogastric intubation as sole treatment of caustic esophageal lesions. *Ann Otol Rhinol Laryngol*. 1985;94:337–41.
53. Gün F, Abbasoğlu L, Celik A, Salman ET. Early and late term management in caustic ingestion in children: a 16-year experience. *Acta Chir Belg*. 2007;107(1):49–52.
54. Kochhar R, Poornachandra KS, Puri P, Dutta U, Sinha SK, Sethy PK, et al. Comparative evaluation of nasointestinal feeding and jejunostomy feeding in acute corrosive injury: a retrospective analysis. *Gastrointest Endosc*. 2009;70:874–80.
55. Krey H. On the treatment of corrosive lesions in the oesophagus; an experimental study. *Acta Otolaryngol Suppl*. 1952;102:1–49.
56. Salzman M, O'Malley RN. Updates on the evaluation and management of caustic exposures. *Emerg Med Clin North Am*. 2007;25:459–76.
57. Rao RB, Hoffman RS. Caustic and batteries in: Goldfrank LR, Flomenbaum NE, Lewin NA, Howland MA, Hoffman RS, Nelson LS, eds. *Goldfrank's Toxicologic Emergencies*. 7 edition, New-York, NY, McGraw- th Hill, 2002:1323-45.
58. Kay M, Wyllie R. Caustic ingestions in children. *Curr Opin Pediatr*. 2009;21:651–4.
59. Cheng HT, Cheng CL, Lin CH. Caustic ingestion in adults: the role of endoscopic classification in predicting outcome. *BMC Gastroenterol*. 2008;8:31.
60. Lew RJ, Kochman ML. A review of endoscopic methods of esophageal dilation. *J Clin Gastroenterol*. 2002;35:117–26.
61. Kirsh MM, Ritter F. Caustic ingestion and subsequent damage to the oropharyngeal and digestive passages. *Ann Thorac Surg*. 1976;21:74–82.
62. Bautista A, Tojo R, Varela R, Estevez E, Villanueva A, Cadranet S. Effects of prednisolone and dexamethasone on alkali burns of the esophagus in rabbit. *J Pediatr Gastroenterol Nutr*. 1996;22:275–83.
63. Nuutinen M, Uhari M, Karvali T, Kouvalainen K. Consequences of caustic ingestions in children. *Acta Paediatr*. 1994;83:1200–5.
64. Anderson KD, Rouse TM. Randolph JGA controlled trial of corticosteroids in children with corrosive injury of the esophagus. *N Engl J Med*. 1990;323(10):637–40.
65. Karnak I, Tanyel FC, Büyükcinal C, Hiçsönmez A. Combined use of steroid, antibiotics and early bougienage against stricture formation following caustic esophageal burns. *J Cardiovasc Surg (Torino)*. 1999;40(2):307–10.
66. Bautista A, Varela R, Villanueva A. Effects of prednisolone and dexamethasone in children with alkali burns of the oesophagus. *Eur J Pediatr Surg*. 1996;6(4):198–203.
67. Usta M, Erkan T, Cokugras FC, Urganci N. High doses of methylprednisolone in the management of caustic esophageal burns. *Pediatrics*. 2014;133(6):E1518–24.
68. Pelclová D, Navrátil T. Do corticosteroids prevent oesophageal stricture after corrosive ingestion? *Toxicol Rev*. 2005;24:125–9.
69. Fulton JA, Hoffman RS. Steroids in second degree caustic burns of the esophagus: a systematic pooled analysis of fifty years of human data: 1956–2006. *Clin Toxicol (Phila)*. 2007;45:402–8.
70. Andreoni B, Farina ML, Biffi R, Crosta C. Esophageal perforation and caustic injury: emergency management of caustic ingestion. *Dis Esophagus*. 1997;10:95–100.
71. Cattan P, Munoz-Bongrand N, Berney T, Halimi B, Sarfati E, Celerier M. Extensive abdominal surgery after caustic ingestion. *Ann Surg*. 2000;231:519–23.
72. Wu MH, Lai WW. Surgical management of extensive corrosive injuries of the alimentary tract. *Surg Gynecol Obstet*. 1993;177:12–6.
73. Brun JG, Celerier M, Koskas F, Dubost C. Blunt thorax oesophageal stripping: an emergency procedure for caustic ingestion. *Br J Surg*. 1984;71:698–700.
74. Huscher CG, Mingoli A, Mereu A, Sgarzini G. Laparoscopy can be very effective in reducing mortality rate for caustic ingestion in suicide attempt. *World J Surg*. 2011;35:2363–4.
75. Hugh TB, Kelly MD. Corrosive ingestion and the surgeon. *J Am Coll Surg*. 1999;189:508–22.
76. Zerbib P, Voisin B, Truant S, Saulnier F, Vinet A, Chambon JP, et al. The conservative management of severe caustic gastric injuries. *Ann Surg*. 2011;253:684–8.
77. Salomone Di Saverio, Andrea Biscardi, Alice Piccinini, Matteo Mandrioli, Gregorio Tugnoli. Different possible surgical managements of caustic ingestion: diagnostic laparoscopy for Zargar's grade 3a lesions and a new technique of "Duodenal Damage Control" with "4-tubes ostomy" and duodenal wash-out as an option for extensive 3b lesions in unstable patients. 2015; *Updates Surg*: doi:10.1007/s13304-015-0313-4.
78. Søreide JA, Viste A. Esophageal perforation: diagnostic work-up and clinical decision-making in the first 24 hours. *Scand J Trauma Resusc Emerg Med*. 2011;30:19–66.
79. Freeman RK, Van Woerkom JM, Vyverberg A, Ascoti AJ. Esophageal stent placement for the treatment of spontaneous esophageal perforations. *Ann Thorac Surg*. 2009;88:194–8.