

METHODOLOGY

Open Access



A protocol for *Chenopodium quinoa* pollen germination

S. Elizabeth Castillo, Jose C. Tovar, Anastasia Shamin, Jorge Gutierrez, Paige Pearson and Malia A. Gehan* 

Abstract

Background: Quinoa is an increasingly popular seed crop frequently studied for its tolerance to various abiotic stresses as well as its susceptibility to heat. Estimations of quinoa pollen viability through staining methods have resulted in conflicting results. A more effective alternative to stains is to estimate pollen viability through in vitro germination. Here we report a method for in vitro quinoa pollen germination that could be used to understand the impact of various stresses on quinoa fertility and therefore seed yield or to identify male-sterile lines for breeding.

Results: A semi-automated method to count germinating pollen was developed in PlantCV, which can be widely used by the community. Pollen collected on day 4 after first anthesis at zeitgeber time 5 was optimum for pollen germination with an average germination of 68% for accession QQ74 (PI 614886). The optimal length of pollen incubation was found to be 48 h, because it maximizes germination rates while minimizing contamination. The pollen germination medium's pH, boric acid, and sucrose concentrations were optimized. The highest germination rates were obtained with 16% sucrose, 0.03% boric acid, 0.007% calcium nitrate, and pH 5.5. This medium was tested on quinoa accessions QQ74, and cherry vanilla with 68%, and 64% germination efficiencies, respectively.

Conclusions: We provide an in vitro pollen germination method for quinoa with average germination rates of 64 and 68% on the two accessions tested. This method is a valuable tool to estimate pollen viability in quinoa, and to test how stress affects quinoa fertility. We also developed an image analysis tool to semi-automate the process of counting germinating pollen. Quinoa produces many new flowers during most of its panicle development period, leading to significant variation in pollen maturity and viability between different flowers of the same panicle. Therefore, collecting pollen at 4 days after first anthesis is very important to collect more uniformly developed pollen and to obtain high germination rates.

Keywords: Quinoa, Pollen germination, Protocol

Introduction

Quinoa (*Chenopodium quinoa* Willd) has grown in popularity due to its ability to produce highly nutritious grains in low quality soils [1–6]. To expand quinoa cultivation to new geographical areas and to develop new varieties, more research to understand quinoa responses to the environment is needed. Since quinoa is a seed crop, one key aspect of quinoa research is determining how

different environments and stresses affect pollen viability [7–10]. Pollen viability is also very helpful to establish male sterility, which greatly facilitates plant breeding and variety development [11, 12].

Pollen viability can be directly quantified through microscopy of pollen tubes forming in styles [7, 13], but this is a complicated and labor-intensive method. A common method of estimating pollen viability is through various pollen stains. However, pollen staining methods can overestimate the proportion of pollen that is physiologically viable [14, 15], and different staining methods can produce inaccurate results [14–16]. In quinoa,

*Correspondence: mgehan@danforthcenter.org

Donald Danforth Plant Science Center, St. Louis, MO 63132, USA



© The Author(s) 2022. **Open Access** This article is licensed under a Creative Commons Attribution 4.0 International License, which permits use, sharing, adaptation, distribution and reproduction in any medium or format, as long as you give appropriate credit to the original author(s) and the source, provide a link to the Creative Commons licence, and indicate if changes were made. The images or other third party material in this article are included in the article's Creative Commons licence, unless indicated otherwise in a credit line to the material. If material is not included in the article's Creative Commons licence and your intended use is not permitted by statutory regulation or exceeds the permitted use, you will need to obtain permission directly from the copyright holder. To view a copy of this licence, visit <http://creativecommons.org/licenses/by/4.0/>. The Creative Commons Public Domain Dedication waiver (<http://creativecommons.org/publicdomain/zero/1.0/>) applies to the data made available in this article, unless otherwise stated in a credit line to the data.

Alexander pollen staining showed no significant changes in pollen viability under heat stress [8], while tetrazolium pollen staining showed a significantly lower pollen viability under a similar heat stress treatment [9]. In vitro pollen germination assays are more accurate than staining methods and much simpler than direct quantification of pollen tubes forming inside styles [9, 13, 17].

Pollen germination assays determine the viability of a pollen grain by its ability to form a pollen tube in vitro. In vitro pollen germination media requires three essential components: sugar, boron, and calcium nitrate [16, 18]. Sucrose acts as an energy source and maintains osmotic balance [18]. Boric acid facilitates growth of the pollen tube, membrane permeability, structure and sugar transportation, while calcium controls the permeability of the pollen tube membrane and assists in ion balance [16, 18].

Here, we report a new method for in vitro pollen germination of quinoa. This protocol was tested on two quinoa accessions that were selected because they represent different geographic origins and are genome sequenced. QQ74 (PI 614886) is a coastal Chilean accession, and cherry vanilla is a variety developed in Oregon [19]. We modified a pre-established medium for in vitro pollen germination of the closely related sugarbeet (*Beta vulgaris* L) [16] to obtain an efficient quinoa pollen germination medium. We also study how flower development and pollen incubation time influence pollen germination in vitro to determine the optimum time for pollen collection and incubation in pollen germination media. We also developed a semi-automated python-based bioinformatics tool to count germinated pollen from image data in PlantCV [20, 21]. Together, this protocol and this image analysis tool represent an important protocol for the quinoa community and a generalizable tool that can speed the process of assessing pollen germination.

Results

Development of a semi-automated method in plantCV to count pollen

To reduce the time spent manually counting the pollen grains and germinating pollen tubes in image data (Fig. 1a), we developed a PlantCV workflow that semi-automates the process of detecting pollen grains. The workflow consists of two main steps, first segmenting the objects (pollen grains and tubes) from the background, and then identifying only the objects that are likely to be pollen grains. After these two automatic steps, the user is required to manually correct wrong detections and select missing grains (Fig. 1b).

In order to detect the pollen grains, we measured the eccentricity of each connected region in the segmentation. This was done using the new PlantCV function '*plantcv.detect_discs*' that was developed to help

automate pollen detection. Circular objects have values of eccentricity close to 0. Thus, the closer the eccentricity value is set to 0 in the PlantCV function '*plantcv.detect_discs*', there will be fewer false positives, but also less pollen grains will be automatically detected. Although this semi-automated tool relies on the user to perform visual inspection and manual correction of the automated detection within the tool, it is faster than alternative fully manual tools such as ImageJ. We identified pollen grains in the images by detecting any object with eccentricity under a value of 0.65.

We then imported the results in the new PlantCV tool '*plantcv.visualize.ClickCount*' where users can manually refine the detections. For example, users can add any pollen grains that were not automatically detected or remove any false positive pollen. We used this same tool to manually identify the germinated pollen (Fig. 1c). In the end we obtain the total number of pollen grains (Fig. 1b) and the number of germinated pollen grains (Fig. 1c). From these measurements we can determine the percent of germinating/total pollen grains. Although this open-source tool was developed for counting quinoa pollen, these image analysis tools and methods are likely generalizable to images of circular pollen from other species and for other applications. For example, automated detection of round seeds in image data.

Optimization of sucrose concentration in pollen germination media

Sucrose concentrations of 8%, 16%, 24%, and 32% (w/v) were evaluated for the reference genome quinoa accession QQ74 (PI 614886) to determine the optimal concentration of sucrose for in vitro pollen germination (Table 1). The highest germination was obtained with 16% sucrose with a median germination of 39.6%, which was significantly higher than 24% sucrose with a median germination of 6.6% (t-test p-value 1.7×10^{-5} , Fig. 2a). An increase to 32% or a decrease to 8% of sucrose in the medium results in lower germination with a median germination of 2.2% and 1.8% respectively (Fig. 2a).

Optimization of boric acid concentration in pollen germination media

Boric acid concentrations of 0%, 0.01%, 0.02%, 0.03%, and 0.04% were evaluated for the reference genome quinoa accession QQ74 (PI 614886) to identify the optimal concentration of boric acid in the germination medium (Table 2). No boric acid in the medium resulted in no pollen germination, indicating that boric acid is essential for quinoa pollen germination (Fig. 2b). There were no significant differences in germination using 0.01%, 0.02%, or 0.03% boric acid in the medium (Fig. 2b). At 0.04% boric acid in

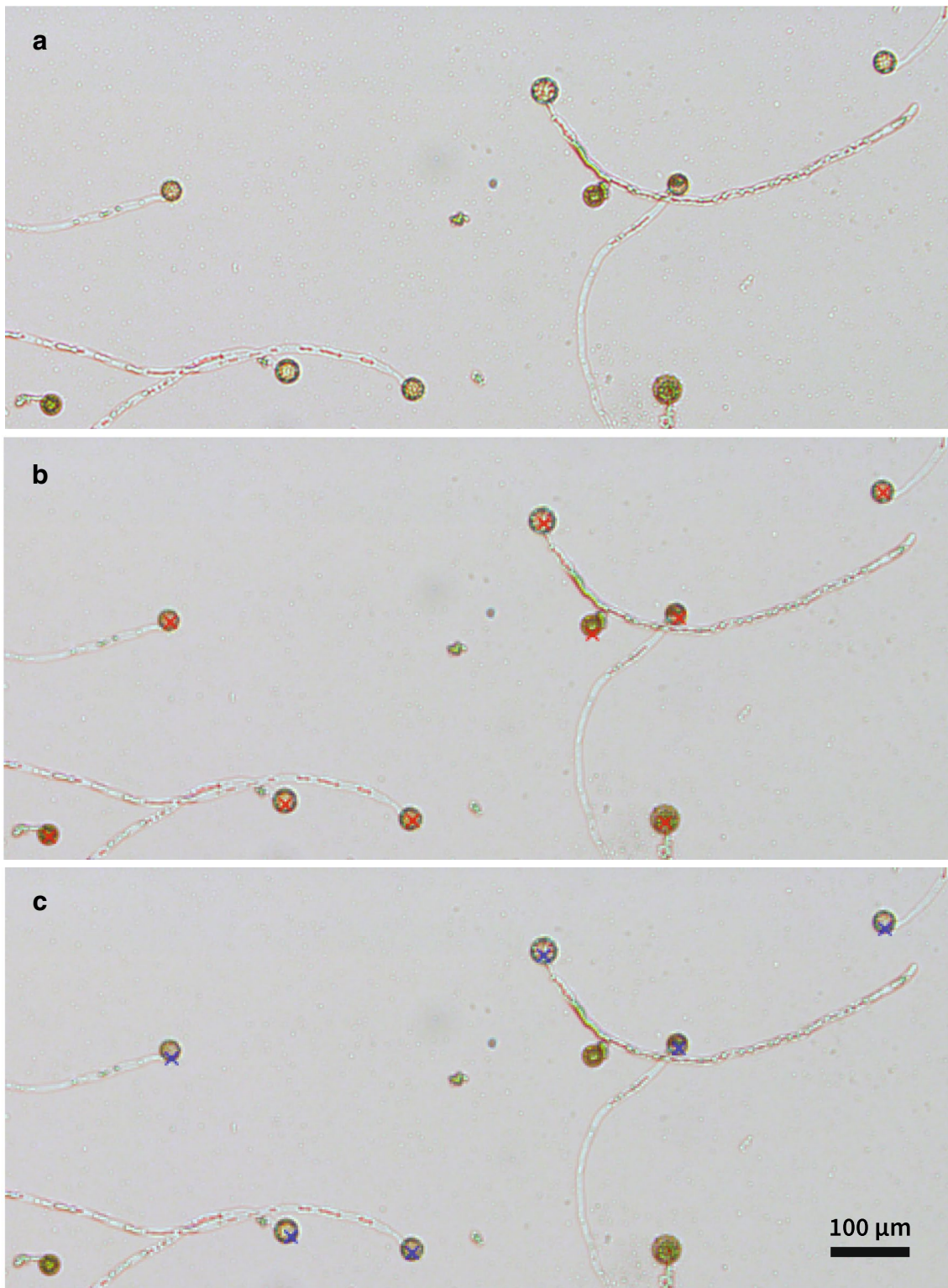


Fig. 1 **a** Close-up of a representative image of germinated and ungerminated pollen grains from quinoa QQ74. **b** The same close-up image showing all automatically and manually labeled pollen grains in PlantCV marked with red Xs. **c** The same close-up image showing only the manually labeled germinated pollen grains in PlantCV marked with blue Xs

Table 1 Media used for sucrose concentration test

	Sucrose medium 1	Sucrose medium 2	Sucrose medium 3	Sucrose medium 4
Sucrose	8%	16%	24%	32%
Boric acid	0.01%	0.01%	0.01%	0.01%
Calcium nitrate	0.007%	0.007%	0.007%	0.007%
pH	5.5	5.5	5.5	5.5
Median germination	1.8% ^a	39.6%	6.6% ^a	2.2% ^a

^a Indicates it was significantly different from the highest germination rate obtained (t-test p-value < 0.05)

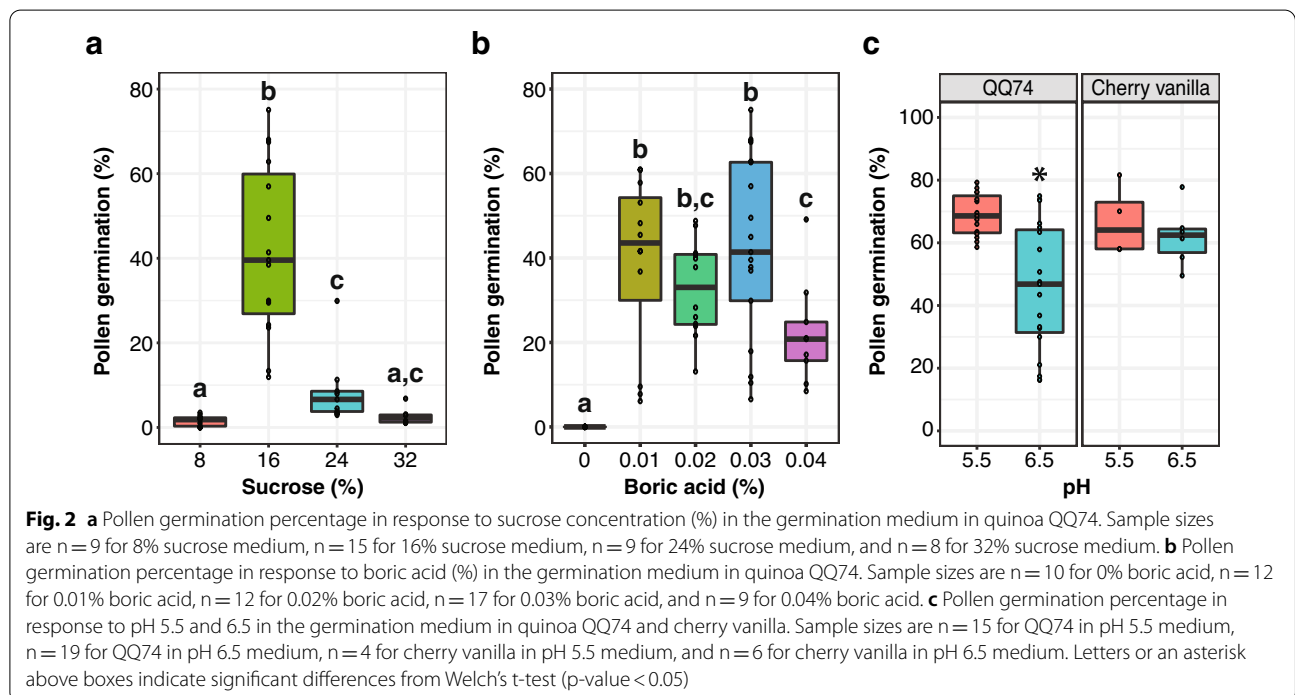


Table 2 Media used for boric acid concentration test

	Boron medium 0	Boron medium 1	Boron medium 2	Boron medium 3	Boron medium 4
Sucrose	16%	16%	16%	16%	16%
Boric acid	0	0.01%	0.02%	0.03%	0.04%
Calcium nitrate	0.007%	0.007%	0.007%	0.007%	0.007%
pH	5.5	5.5	5.5	5.5	5.5
Median germination	0% ^a	43.6%	33%	41.4%	20.8% ^a

^a Indicates it was significantly different from the highest germination rate obtained (t-test p-value < 0.05)

the medium the germination was reduced significantly to 20.8% from 41.4% median germination obtained at 0.03% boric acid (t-test p-value 0.006) and from 43.6% median germination obtained at 0.01% boric acid (t-test p-value 0.029, Fig. 2b). There were no significant

differences in germination comparing 0.02% to 0.04% boric acid (t-test p-value 0.06223). Therefore, boric acid at either 0.01% or 0.03% could be used for optimal germination. For this study, 0.03% boric acid was used in subsequent experiments.

Table 3 Media used for pH test

	pH medium 1	pH medium 2
Sucrose	16%	16%
Boric acid	0.03%	0.03%
Calcium nitrate	0.007%	0.007%
pH	5.5	6.5
Median germination for QQ74	68.6%	46.8% ^a
Median germination for cherry vanilla	64.1%	62.4%

^a Indicates it was significantly different from the highest germination rate obtained for that genotype (t-test p-value < 0.05)

Optimization of pollen germination media pH

Two pH levels (5.5 and 6.5) were evaluated in QQ74 (PI 614886) and cherry vanilla accessions (Table 3). Cherry vanilla was added to this experiment to test the efficiency of the germination medium in a different genotype. In QQ74 the highest germination was obtained at a pH of 5.5 with a median germination of 68.6% compared to 46.8% at a pH of 6.5 (t-test p-value 0.000107, Fig. 2c). Pollen germination in cherry vanilla has no significant differences between both pHs evaluated (t-test p-value 0.506), at pH 5.5 the median germination was 64.1% and 62.4% at pH 6.5 (Fig. 2c). Since for QQ74 germination at pH 5.5 was significantly higher than at pH 6.5, pH 5.5 was selected.

48 hours of incubation was selected to evaluate pollen germination

To determine the incubation time required for maximum germination under in vitro conditions, pollen germination was evaluated after 1, 18, 24, 48, and 72 h. Pollen germination was evaluated in a germination medium containing 16% sucrose, 0.03% boric acid, and 0.007% calcium nitrate at pH 5.5. There is a significant increase in germination up to 48 h of pollen incubation (Fig. 3). Pollen germination increased significantly from 8.2% median germination at 24 h to 46.9% median germination at 48 h of incubation (t-test p-value 0.00005, Fig. 3). Increasing the incubation time to 72 h did not result in significantly higher germination (t-test p-value 0.05953; Fig. 3), and resulted in visible contamination of the germination media, leading to sample loss. Therefore 48 h of incubation was selected.

Timing of pollen collection is critical for successful pollen germination

The flowering stage of quinoa panicles is critical for the success of the pollen germination assay. This is because quinoa produces many new flowers daily for several

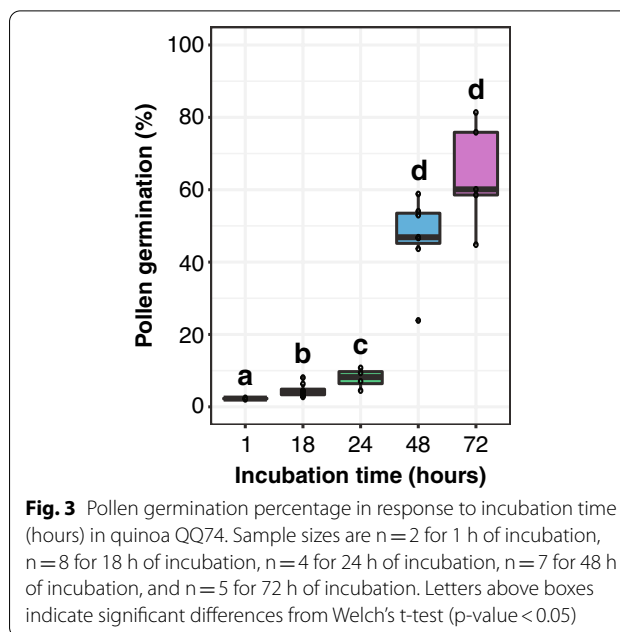
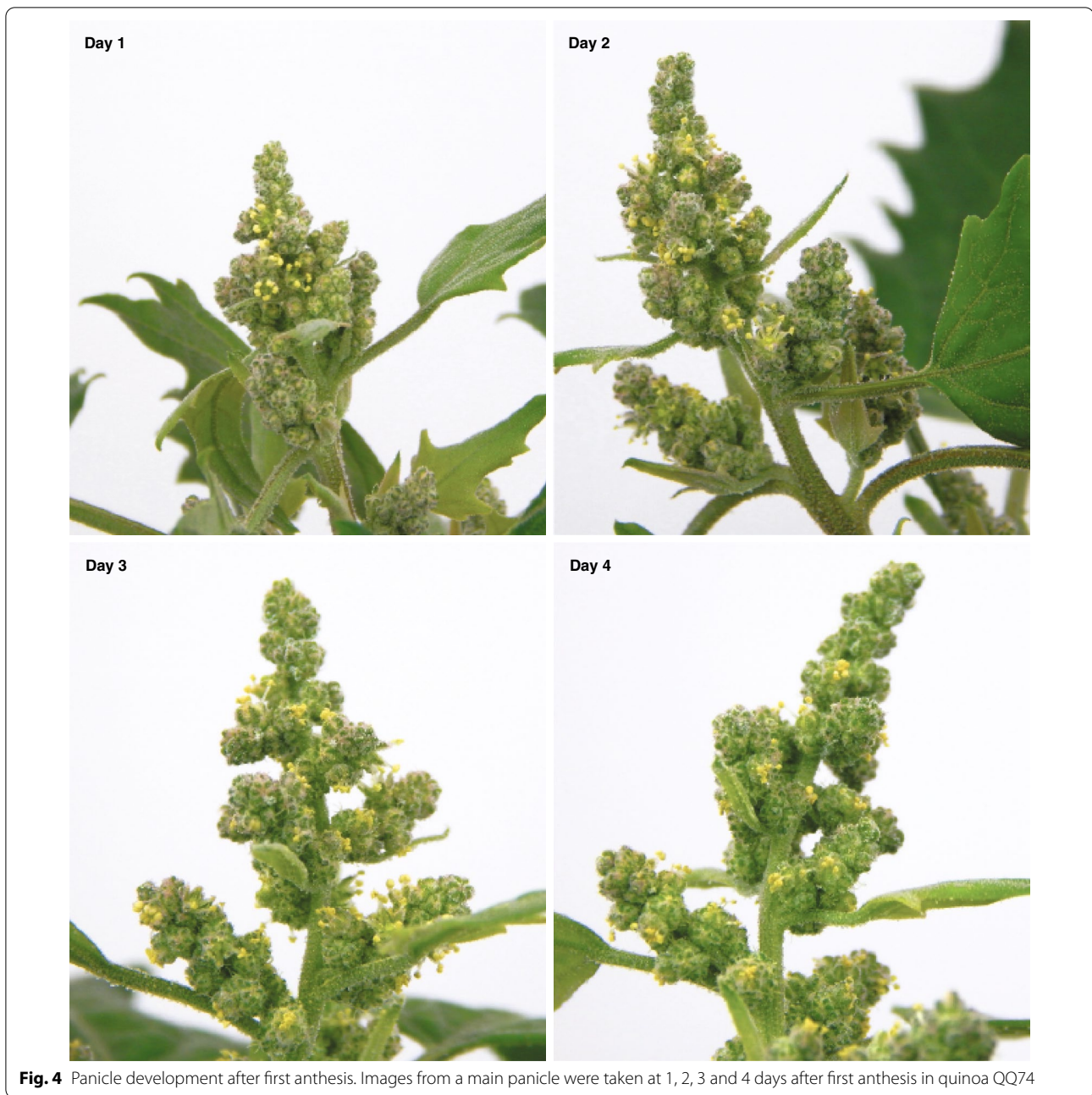


Fig. 3 Pollen germination percentage in response to incubation time (hours) in quinoa QQ74. Sample sizes are n = 2 for 1 h of incubation, n = 8 for 18 h of incubation, n = 4 for 24 h of incubation, n = 7 for 48 h of incubation, and n = 5 for 72 h of incubation. Letters above boxes indicate significant differences from Welch's t-test (p-value < 0.05)

weeks during panicle development, and pollen viability depends on the development of each individual flower. Therefore, collecting pollen too early or too late during the flower development has a significant impact on pollen germination. First anthesis is defined as the time point when flowers open with extruded anthers for the first time in the plant. Starting at first anthesis, the number of hermaphrodite flowers with extruded anthers changes daily (Fig. 4). In the main panicle the first few flowers open then several new flowers keep opening daily for approximately one week. After this short period of rapid development there will be only a few or no new flowers opening daily for a few more weeks.

Pollen collected 2 to 4 days after the first anthesis (AFA) was evaluated to determine the best time for pollen collection. Pollen from day 1 AFA was not collected because few flowers per panicle were open and the anthers were not dehiscent. Pollen from day 5 AFA was not evaluated because by that time a significant amount of pollen from the main panicle had already fallen out of the flowers, making it very difficult to collect. Pollen germination was evaluated after 48 h of incubation in a germination medium containing 16% sucrose, 0.03% boric acid, and 0.007% calcium nitrate at pH 5.5. The highest germination was obtained from pollen collected at day 4 AFA with a median germination of 67.8% (Fig. 5). This was significantly higher than the 45.5% median germination obtained from pollen collected at 3 days AFA (t-test p-value 0.006) and the



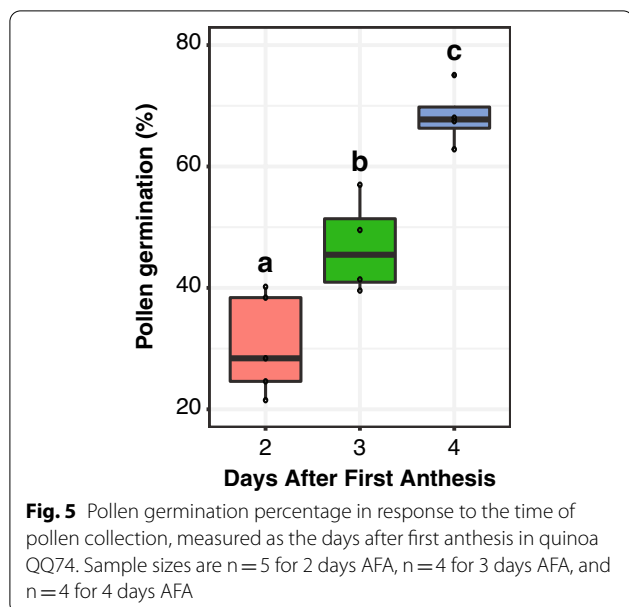
28.4% median germination obtained from pollen collected at 2 days AFA (t-test p-value 0.00009, Fig. 5).

Discussion

The quinoa pollen germination medium developed here showed an efficiency (~65%) comparable to media used to germinate pollen from grapes [22], wheat [13], and cotton [23], but slightly lower than the germination efficiency obtained in some of the most commonly studied plant species such as *Arabidopsis* (~90%) [24] and

soybeans (~90%) [25]. This could indicate that future studies on pollen germination in other quinoa accessions and testing of other medium components may still lead to higher pollen germination efficiencies in quinoa.

The optimal sucrose concentration found in this study (16%) is slightly higher than that used for most pollen germination media (~10%) [26]. This may be because quinoa pollen is reported to be trinucleate [9]. Trinucleate pollen typically requires slightly higher sucrose for germination than binucleate pollen [26], which is more



common in other species. For boric acid, we found two optimal concentrations: 0.01% and 0.03%. The concentration of 0.01% is equivalent to 1.6 mM boric acid, the median concentration used for most pollen germination media [26]. Although 0.03% boric acid is substantially higher than 0.01%, both concentrations yielded very similar germination efficiencies, indicating that quinoa may tolerate higher boric acid concentrations in pollen germination media than other species. However, from previous studies there is no indication that tolerance to a higher boric acid concentration in the germination media correlates to any particular pollen characteristics [26]. The optimal pH for quinoa accession QQ74 was 5.5, which is typically used for germination of starchy pollen [26]. This indicates that quinoa pollen may have higher starch content than most other species, which is typical of trinucleate pollen [26]. However, to our knowledge, the starch content of quinoa pollen has not been reported.

It is interesting that the optimal incubation time for quinoa pollen germination was 48 h. Reports in other species indicate that incubation periods longer than 24 h typically do not significantly increase germination efficiency [27–29]. This may indicate that quinoa pollen may be particularly resilient to loss of fertility over time after anther dehiscence.

A common problem for *in vitro* pollen germination is establishing a reproducible method [13, 30]. Working with quinoa pollen is particularly challenging, because quinoa can have many panicles in each plant, all at different developmental stages, and the flowers in each panicle also are at different developmental stages. Further, most quinoa flowers are female only, but pollen must

be collected from the hermaphrodite flowers, which can be spread along the panicle. Therefore, pollen collection must be done carefully, tapping the panicle at different angles and from different parts to collect viable pollen. We showed that the key step for a successful *in vitro* pollen germination experiment is the developmental time point when quinoa pollen is collected. It is difficult for even an experienced researcher to visually detect the optimal time for pollen collection. Because of this, we measured overall panicle development using days after first anthesis (AFA). We showed that at 4 days AFA pollen germination peaked at 68.4% on average. This approach was likely successful in part because during early panicle development, flower development is much more uniform along the panicle than at later days AFA. At later time points there is the technical challenge that most pollen has fallen out of the flowers in the main panicle and it is likely that too much senescent and dry pollen would be collected, which has much lower germination rates. Although tracking the individual age of each hermaphrodite flower would likely yield a more accurate estimation of the age at which the pollen is most viable, such a study is technically unfeasible in quinoa. This is both because an individual flower yields a very small amount of pollen and because tracking quinoa's very small flowers over time is extremely difficult. Overall, we showed that pollen collected from a relatively early time point in panicle development ensures more uniformly developed pollen, and a more accurate representation of peak pollen viability.

Conclusions

We report for the first time an *in vitro* pollen germination protocol for quinoa, which we tested on two genome sequenced quinoa accessions: PI 614886 and cherry vanilla from different geographical origins. This method is a valuable tool to study pollen viability in quinoa. Pollen viability is known to be affected under temperature stress in many plant species, but it is unclear what happens in quinoa [8, 9]. This pollen germination method will help understand pollen viability in quinoa under stress. This pollen germination method could also be used to identify male-sterile quinoa lines for breeding. A tool to semi-automate the process of counting germinating pollen was also developed in the open-source image analysis toolkit, PlantCV.

Tracking days after the first anthesis was an effective way to estimate flower and pollen maturity during early flowering. This is important in quinoa because quinoa continuously produces new flowers during most of the period of panicle development, leading to significant differences in flower and pollen maturity among the many flowers within a panicle. Tracking days AFA is a relatively

simple and reproducible way to collect optimal pollen for successful *in vitro* pollen germination studies.

Materials and methods

Plant material and pollen collection

Chenopodium quinoa seeds (accessions PI614886 and PI643079) were obtained from the USDA. Seeds were planted in Pro-Mix FPX (Premier Tech Horticulture, Quebec, Canada) soil and grown for 10 to 14 days at 22 °C, 12 h day photoperiod, 50% relative humidity, 400 $\mu\text{mol m}^{-2} \text{s}^{-1}$ light intensity. Plantlets with four leaves were transplanted to Berger BM7 (Berger, Quebec, Canada) soil in 4.5-inch pots, and then transferred to a growth chamber set to the same conditions (22 °C, 12 h day photoperiod, 50% relative humidity, 400 $\mu\text{mol m}^{-2} \text{s}^{-1}$ light intensity) until flowering. After the main inflorescence became visible, plants were observed daily to identify the first anthesis. First anthesis was defined as the first open flower with extruded anthers (Fig. 4). Plants were grouped according to the day of first anthesis to have similar maturity of flowers during pollen collection. Pollen was collected by tapping quinoa flowers from 3 to 5 plants into petri-dishes. Pollen from plants growing in growth chambers was collected 5 h after lights-on (zeitgeber time 5) and 2, 3, and 4 days after the first anthesis to determine the optimal day for maximum pollen germination. Immediately after pollen collection, pollen was added to germination media to avoid pollen desiccation.

Optimization of germination medium

The culture medium developed by Hecker & McClintock, 1988 [16] for pollen germination of sugar beet was used as the initial medium to develop the quinoa pollen germination medium. To optimize the germination medium varying concentrations of sucrose and boric acid were evaluated. Calcium nitrate was kept at a constant concentration in all test media: 0.007% (w/v). Sucrose concentrations of 8%, 16%, 24%, and 32% (w/v) were first evaluated. After an optimum sucrose concentration was identified, boric acid concentrations were evaluated at 0%, 0.01%, 0.02%, and 0.03% (w/v). The culture medium was evaluated at pH 5.5 and 6.5. Media was filter sterilized with a 0.22 μm pore size nylon filter.

Pollen tube germination conditions

Pollen germination media was added to pollen in a sterile flow hood to minimize contamination of the plates during incubation. To incubate the pollen and allow germination, a humidity chamber was used following the procedure described by Ordoñez [31]. A sterile 1000 μl micropipette tip was used to gently mix pollen and pollen germination media. A

concentration of approximately 75 μl of pollen germination medium/2.73 mg of pollen was used (Fig. 6a). This high density is important to obtain good germination [30]. The pollen and medium mix was then transferred to a deep petri dish lid (100 \times 25 mm) as four to six droplets (\sim 75 μl for each droplet, Fig. 6b). To maintain humidity inside the petri-dishes, each petri-dish had a sterile filter paper (Whatman grade 1 qualitative cellulose filter paper, Cytiva, Buckinghamshire, United Kingdom) wet with sterile distilled water (\sim 2500 μl) placed in the bottom of the deep petri dish. The filter paper was taped in 3 points to the bottom of the petri-dish to hold it in place during the incubation (Fig. 6c). Any air pockets trapped between the petri dish and the moistened filter paper were pushed out with a sterile micropipette tip or a sterile loop. The petri-dishes were placed upside down (Fig. 6d) and sealed with Parafilm for incubation. Pollen was incubated for 48 h at 22 °C in a growth chamber with 12 h day photoperiod, 50% relative humidity, 400 $\mu\text{mol m}^2/\text{s}$ light intensity. Each droplet was considered a sample for data analysis.

Imaging of pollen

Pollen germination was evaluated after 48 h of incubation. Samples were pipetted onto microscope slides using micropipette tips (1000 μl) that were clipped to make larger tip openings to minimize damage to the pollen tails. Pollen germination was observed using a Leica CTR6000 microscope, using 5X magnification. Images of approximately ten fields of view with an average of 50 pollen grains per view were captured per sample. Images are available here: <https://doi.org/10.5281/zenodo.5909573>.

Pollen can aggregate on the germination medium, making counting germinated and non-germinated pollen grains difficult. Pollen tubes can form a net and have many air sacs which help them float [32, 33], so they can aggregate at the top and center of the germination medium drop, while ungerminated pollen sinks. Since this can form a germination gradient in the drop, it is important to be consistent in the regions of the drop that are counted to calculate pollen germination. Pollen towards the center of the drop may have significantly higher germination rates, but will also overlap more frequently, making it harder to accurately count at the center of the drop. Counting pollen at the edges of the drop will be biased towards low germination rates. We counted pollen only in areas where the pollen was well spread over the microscopy slide with little or no overlap of the pollen grains (Fig. 1a), while avoiding the edges of the drop or areas where the rate of pollen germination was evidently very different from the rest of the drop.

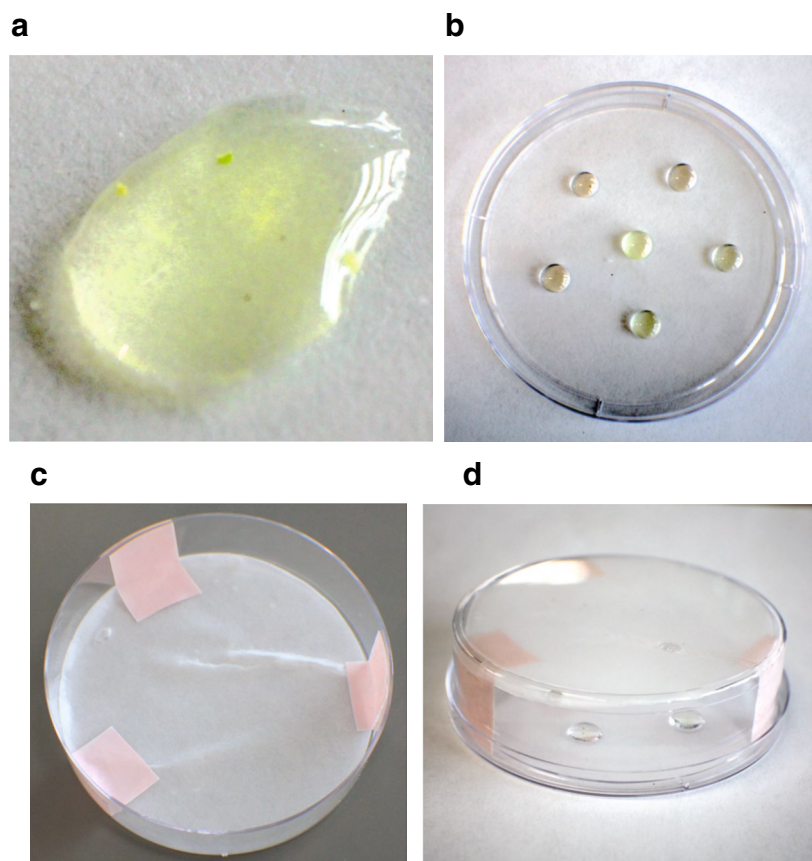


Fig. 6 **a** Close-up of a germination medium droplet with the ideal concentration of pollen for maximum germination. **b** Petri dish lid with germination medium droplets containing pollen. **c** Petri dish bottom with wet filter paper taped on 3 points. **d** Incubation setup for pollen germination, before sealing with Parafilm

Semi-automated pollen counting tool in plantCV

PlantCV is a Python-based, open-source image analysis toolkit [20, 21]. A PlantCV image analysis workflow and new PlantCV modules were developed to semi-automate the process of detecting pollen grains and pollen tubes. The workflow consists of two main steps, first segmenting the objects (pollen grains and tubes) from the background, and then identifying only the objects that are likely to be pollen grains. After these two automatic steps, the user manually corrects incorrect detections and selects missing grains.

Segmentation of target objects (pollen grains or pollen tubes) from the background using the PlantCV function '*plantcv.threshold.binary*' in the blue channel of the RGB image with a threshold of 150. To clean up the segmentation we used the morphological operations '*plantcv.fill_holes*' and '*plantcv.fill*'.

In order to detect the pollen grains, we measured the eccentricity of each connected region in the segmentation. Circular objects have values of eccentricity close to 0. Thus, we identified pollen grains in the images by

detecting any object with eccentricity under a value of 0.65. This was done using the new PlantCV function '*plantcv.detect_discs*'.

We then imported the results in the new PlantCV tool '*plantcv.visualize.ClickCount*' where we manually refined the detections. We used this same tool to manually identify the germinated grains. A pollen grain was counted as germinated only when the length of the tube was larger than the diameter of the grain. In the end we obtain the total number of grains and the number of germinated grains. From these measurements we can determine the number of non-germinated grains. This workflow is available at <https://github.com/danforthcenter/quinoa-pollen-germination> and a tutorial is available at <https://github.com/danforthcenter/plantcv-tutorial-interactive-pollent-count>.

Determination of pollen germination rates

The pollen germination percentage was calculated for each image by multiplying the number of germinated pollen grains by 100 and dividing by the total number of pollen

grains in the image. Then, the mean germination percent was calculated for each sample.

Analysis and statistics

Data was analyzed using R version 4.1.2 and RStudio version 2021.09.1. A Welch's t-test was used to establish statistically significant differences in germination rates between days after first anthesis, incubation periods, sucrose concentrations, pHs and boric acid concentrations.

Pollen germination protocol for the lab

A laboratory protocol for germinating quinoa pollen can be found in Additional file 1: Pollen germination protocol for the lab.

Supplementary Information

The online version contains supplementary material available at <https://doi.org/10.1186/s13007-022-00900-3>.

Additional file 1: Pollen germination protocol for the lab

Acknowledgements

We thank the Donald Danforth Plant Science Center's Integrated Plant Growth Facility, and in particular Kristina Haines, Tracy Minner, Kevin Reilly, Mary Lyon and Stephen Kraeuter for support with plant care in our growth chambers and greenhouse.

Author contributions

EC, JT, and MG conceived the research; EC, JT, and MG designed the experiments; JG, developed tools for the experiments; EC, PP, and AS performed the experiments; EC, JT, and AS analyzed pollen images and data; EC, JT, AS, JG, and MG wrote and edited the article. All authors read and approved the final manuscript.

Funding

This work was supported by USDA-NIFA 2019-67021-29926 and USDA-NIFA 2022-67021-36467 to MG and USDA-NIFA 2020-67012-31897 to JT, and by the Donald Danforth Plant Science Center.

Availability of data and materials

The image datasets generated and analyzed during the current study are available on Zenodo: <https://doi.org/10.5281/zenodo.5909573>. Scripts and extracted numerical data are available on GitHub: <https://github.com/danforthcenter/quinoa-pollen-germination>.

Declarations

Ethics approval and consent to participate

Not applicable.

Consent for publication

Not applicable.

Competing interests

The authors declare that they have no conflicts of interest.

Received: 31 January 2022 Accepted: 3 May 2022

Published online: 18 May 2022

References

1. Choukr-Allah R, Rao NK, Hirich A, Shahid M, Alshankiti A, Toderich K, et al. Quinoa for marginal environments: toward future food and nutritional security in mena and Central Asia Regions. *Front Plant Sci.* 2016;7:346.
2. Repo-Carrasco R, Espinoza C, Jacobsen S-E. Nutritional value and use of the andean crops quinoa (*Chenopodium quinoa*) and Kañiwa (*Chenopodium pallidicaule*). *Food Rev Int.* 2003;19:179–89.
3. Hinojosa L, González JA, Barrios-Masias FH, Fuentes F, Murphy KM. Quinoa abiotic stress responses: a review. *Plants.* 2018;7:E106.
4. Al-Naggar AMM, Abd El-Salam RM, Badran AEE, El-Moghazi MMA. Drought tolerance of five quinoa (*Chenopodium quinoa* Willd.) genotypes and its association with other traits under moderate and severe drought stress. *Asian J Adv Agric Res.* 2017;3:1–13.
5. Jacobsen S-E. The worldwide potential for quinoa (*Chenopodium quinoa* Willd.). *Food Rev Int.* 2003;19:167–77.
6. Maliro MFA, Guwela VF, Nyaika J, Murphy KM. Preliminary studies of the performance of quinoa (*Chenopodium quinoa* Willd.) genotypes under irrigated and rainfed conditions of Central Malawi. *Front Plant Sci.* 2017;8:227.
7. Isobe K, Sugiyama H, Tamamushi K, Shimizu T, Kobashi K, Higo M. Effects of day length on pollen tube elongation, embryo formation and seed development after flowering in quinoa (*Chenopodium quinoa* Willd.). *Seed Sci Res Camb Univ Press.* 2018;28:272–6.
8. Tovar JC, Quillatupa C, Callen ST, Castillo SE, Pearson P, Shamin A, et al. Heating quinoa shoots results in yield loss by inhibiting fruit production and delaying maturity. *Plant J.* 2020;102:1058–73.
9. Hinojosa L, Matanguihan JB, Murphy KM. Effect of high temperature on pollen morphology, plant growth and seed yield in quinoa (*Chenopodium quinoa* Willd.). *J Agro Crop Sci.* 2018;205:34–45.
10. Eustis A, Murphy KM, Barrios-Masias FH. Leaf gas exchange performance of ten quinoa genotypes under a simulated heat wave. *Plants.* 2020;9:81.
11. Peterson A, Jacobsen S-E, Bonifacio A, Murphy K. A crossing method for quinoa. *Sustainability.* 2015;7:3230–43.
12. Zurita-Silva A, Fuentes F, Zamora P, Jacobsen S-E, Schwember AR. Breeding quinoa (*Chenopodium quinoa* Willd.): potential and perspectives. *Mol Breed.* 2014;34:13–30.
13. Impe D, Reitz J, Köpnick C, Rolletschek H, Börner A, Senula A, et al. Assessment of pollen viability for wheat. *Front Plant Sci.* 2019;10:1588.
14. Melloni MLG, Scarpari MS, de Mendonça JR, Perecin D, de Andrade Landell MG, Pinto LR. Comparison of two staining methods for pollen viability studies in sugarcane. *Sugar Tech.* 2013;15:103–7.
15. Rathod V, Behera TK, Munshi AD, Durgesh K. Pollen viability and in vitro pollen germination studies in momordica species and their intra and interspecific hybrids. *Int J Chem Stud.* 2018;6:32–40.
16. Hecker RJ, McClintock M. Sugarbeet pollen germination in vitro. *J Sugar Beet Res.* 1988;25:42–54.
17. Shivanna KR, Linskens HF, Cresti M. Pollen viability and pollen vigor. *Theor Appl Genet.* 1991;81:38–42.
18. Patel RG, Mankad AU. In vitro pollen germination—a review. *Int J Sci Res.* 2012;3:358.
19. Jarvis DE, Ho YS, Lightfoot DJ, Schmöckel SM, Li B, Borm TJA, et al. The genome of *Chenopodium quinoa*. *Nature.* 2017;542:307–12.
20. Gehan MA, Fahlgren N, Abbasi A, Berry JC, Callen ST, Chavez L, et al. PlantCV v2: Image analysis software for high-throughput plant phenotyping. *PeerJ.* 2017;5: e4088.
21. Fahlgren N, Feldman M, Gehan MA, Wilson MS, Shyu C, Bryant DW, et al. A versatile phenotyping system and analytics platform reveals diverse temporal responses to water availability in setaria. *Mol Plant.* 2015;8:1520–35.
22. Sharafi Y, Bahmani A. Pollen germination, tube growth and longevity in some cultivars of *Vitis vinifera* L. *Afr J Microbiol Res.* 2011;5:1102–7.
23. Kakani VG, Reddy KR, Koti S, Wallace TP, Prasad PVV, Reddy VR, et al. Differences in in vitro pollen germination and pollen tube growth of cotton cultivars in response to high temperature. *Ann Bot.* 2005;96:59–67.
24. Rodriguez-Enriquez MJ, Mehdi S, Dickinson HG, Grant-Downton RT. A novel method for efficient in vitro germination and tube growth of *Arabidopsis thaliana* pollen. *New Phytol.* 2013;197:668–79.
25. Jumrani K, Bhatia VS, Pandey GP. Screening soybean genotypes for high temperature tolerance by in vitro pollen germination, pollen tube length, reproductive efficiency and seed yield. *Indian J Plant Physiol.* 2018;23:77–90.

26. Tushabe D, Rosbakh S. A compendium of in vitro germination media for pollen research. *Front Plant Sci.* 2021;12: 709945.
27. Fan LM, Wang YF, Wang H, Wu WH. In vitro Arabidopsis pollen germination and characterization of the inward potassium currents in Arabidopsis pollen grain protoplasts. *J Exp Bot.* 2001;52:1603–14.
28. Fragallah S, Lin S, Li N, Ligate E, Chen Y. Effects of sucrose, boric acid pH and incubation time on in vitro germination of pollen and tube growth of Chinese fir (*Cunninghamia lanceolata* L). *Forests.* 2019;10:102.
29. Sulusoglu M, Cavusoglu A. In vitro pollen viability and pollen germination in cherry laurel (*Prunus laurocerasus* L). *Sci World J.* 2014;2014:657123.
30. Boavida LC, McCormick S. Technical advance: temperature as a determinant factor for increased and reproducible in vitro pollen germination in *Arabidopsis thaliana*. *Plant J Wiley.* 2007;52:570–82.
31. Ordoñez B. Determinación de la viabilidad y fertilidad del polen 2014 Centro Internacional de la Papa 4 <http://cipotato.org/wp-content/uploads/2014/05/006140.pdf>
32. Ylstra B, Garrido D, Busscher J, van Tunen AJ. Hexose transport in growing petunia pollen tubes and characterization of a pollen-specific, putative monosaccharide transporter. *Plant Physiol.* 1998;118:297–304.
33. Breygina M, Klimentko E, Schekaleva O. Pollen germination and pollen tube growth in gymnosperms. *Plants.* 2021;10:1301.

Publisher's Note

Springer Nature remains neutral with regard to jurisdictional claims in published maps and institutional affiliations.

Ready to submit your research? Choose BMC and benefit from:

- fast, convenient online submission
- thorough peer review by experienced researchers in your field
- rapid publication on acceptance
- support for research data, including large and complex data types
- gold Open Access which fosters wider collaboration and increased citations
- maximum visibility for your research: over 100M website views per year

At BMC, research is always in progress.

Learn more biomedcentral.com/submissions

