


BRIEF REPORT

Open Access



Squamous cell carcinoma initially occurring on the tongue dorsum: a case series report with molecular analysis

Sawako Ono^{1†}, Katsutoshi Hirose^{2*†} , Shintaro Sukegawa³, Kyoichi Obata⁴, Masanori Masui⁵, Kazuaki Hasegawa⁵, Ai Fujimura⁵, Katsumitsu Shimada⁶, Satoko Nakamura⁷, Akari Teramoto², Yumiko Hori^{8,11}, Eiichi Morii⁸, Daisuke Motooka⁹, Takuro Igawa¹, Takehiro Tanaka¹, Hitoshi Nagatsuka¹⁰, Satoru Toyosawa² and Hidetaka Yamamoto¹

Abstract

Background Squamous cell carcinoma (SCC) of the dorsum of the tongue is extremely rare, and it clinically resembles various benign lesions. Somatic mutations in *TP53* and some driver genes were implicated in the development of SCC; however, the somatic genetic characteristics of dorsal tongue SCC remain unknown. With a detailed analysis of gene mutations in dorsal tongue SCC, we aimed to better understand its biology.

Methods Four cases of SCC initially occurring on the tongue dorsum were evaluated for clinical and histological findings and immunohistochemical expression of p53 and p16. Gene mutations were analyzed using next-generation sequencing with a custom panel of driver genes.

Results We retrospectively investigated 557 cases of tongue SCC, and only four cases of SCC initially occurred on the tongue dorsum. The four patients (cases 1–4) were one woman and three men with a mean age of 53.75 years (range: 15–74 years). Histological analysis revealed well-differentiated SCC. Through molecular analysis, we identified pathogenic somatic mutations, namely, *TP53* p.C176F (c.527G>T) in case 3 and *TP53* p.R282W (c.844 C>T) in case 4. No pathogenic variants were identified in the PI3K/AKT or RAS/RAF pathways. The p53 immunohistochemical examination revealed a wild-type expression pattern in cases 1–3 and strong expression in case 4. The results of p16 immunostaining were negative in all cases.

Conclusions We described four previously unreported genetic characteristics of dorsal tongue SCC. Somatic *TP53* mutations may contribute to the development of a subset of dorsal tongue SCC; however, more cases with genetic analysis need to be accumulated.

Keywords Squamous cell carcinoma, Oral squamous cell carcinoma, Dorsum of the tongue, *TP53*, p53, Next-generation sequencing

[†]Sawako Ono and Katsutoshi Hirose contributed equally to this work.

*Correspondence:
Katsutoshi Hirose
hirose.katsutoshi.dent@osaka-u.ac.jp

Full list of author information is available at the end of the article



Introduction

Squamous cell carcinoma (SCC) of the tongue is the most common oral cancer and usually occurs on the lateral border of the tongue [1–3]. SCC occurring on the dorsum of the tongue is extremely rare, accounting for 0–5% of all tongue SCC [2–5]. To the best of our knowledge, only 28 cases of dorsal tongue SCC, including the present four cases, have been described in the English literature [4–21]. These previous cases included only two case series: one with five cases [4] and one with three cases [5]. Other cases have been single-case reports [6–21]. In addition to its rarity, clinical diagnosis of dorsal tongue SCC is challenging as it may resemble various benign lesions; amyloidosis, squamous papilloma, granular cell tumor, lichen planus, median rhomboid glossitis, and chronic candidiasis [3–11, 14, 20]. Owing to the site characteristics, the resection range for dorsal tongue SCC tends to be wider than that for lateral border SCC [18, 20]. Delayed diagnosis of SCC can lead to tongue dysfunction, such as dysarthria and dysphagia [3, 4, 17, 18, 21]. Therefore, it is crucial to arrive at a definitive diagnosis by promptly performing a biopsy when there is a possibility of malignancy [3, 5, 14]. However, dorsal tongue SCC typically exhibits well-differentiated morphology and can be difficult to diagnose as a malignant lesion through small biopsy specimens [3, 20]. As a result, lesions on the dorsum of the tongue are often neglected as they are considered benign [8, 9, 11, 14, 18, 20].

In head and neck SCC (HNSCC), including oral SCC (OSCC), most genetic mutations are associated with tumor suppressor genes such as *TP53*, followed by the phosphatidylinositol 3-kinase (PI3K)/AKT and RAS/RAF pathways [1, 22–27]. Mutations in these genes are closely related to tumorigenesis and prognosis of various malignancies [22–29]. However, there are no reports identifying somatic gene mutations in patients with dorsal tongue SCC, and the genetic characteristics associated

with SCC initially occurring on the tongue dorsum remain unknown. Inherited mutations in *TP53* encoding transcription factor p53 increase the risk of various malignancies with early onset [30, 31]. Yamasaki et al. reported a case of dorsal tongue SCC with a germline *TP53* mutation (p.R280*, c.838 A>T) [19]: the patient had multiple cancers associated with germline *TP53* mutations, including esophageal, gastric, and renal cancers (Table 1). These results suggested that *TP53* mutations are involved in the development of dorsal tongue SCC.

A detailed analysis of gene mutations in dorsal tongue SCC could enhance our understanding of its biology. Here, we performed clinical, pathological, and genetic analyses of a case series of dorsal tongue SCC.

Methods

Patient selection

We retrospectively investigated 557 cases of tongue SCC obtained from the pathology files of Okayama University Hospital, Osaka University Dental Hospital, Kagawa University Hospital, and Kagawa Prefectural Central Hospital. Among SCC cases occurring on the tongue dorsum, we excluded cases of non-primary SCC and simultaneous SCC at the tongue dorsum and other sites. The final diagnosis of dorsal tongue SCC was made by two pathologists (SO and KH). Formalin-fixed, paraffin-embedded (FFPE) tissues were retrieved for four patients with dorsal tongue SCC (cases 1–4). This study was approved by the Ethical Review Board of the Graduate School of Dentistry, Osaka University (No. R5-E11).

Histological and immunohistochemical examination

Resected tissue samples were fixed with 10% formalin, embedded in paraffin, cut into 4- μ m-thick serial sections, and used for hematoxylin and eosin (H&E) and immunohistochemical staining. TNM classification was performed according to the 8th edition of the Union

Table 1 Summary of characteristics of dorsal tongue SCC in previous reported cases and the present series

	Age (y)/ Sex	Medical history	Tobacco history	Histology	TP53 mutations	p53 IHC
Yamasaki et al. [19]	69/M	Esophageal, gastric, and renal cancer	Former smoker	Well-differentiated SCC	Germline p.R280*	Null
Abe et al. [20]	69/F	No	No	Well-differentiated SCC	NA	Positive
Case 1	63/F	No	Former smoker 40 pack-years	Well-differentiated SCC	No	WT
Case 2	74/M	Urothelial cancer	Current smoker 5 pack-years or more	Well-differentiated SCC	No	WT
Case 3	63/M	MDS	No	Verrucous carcinoma with dysplasia or minimal invasion (well-differentiated SCC)	Somatic p.C176F	WT
Case 4	15/M	IBMF5	No	Well-differentiated SCC	Somatic p.R282W	Positive

SCC, squamous cell carcinoma; IHC, immunohistochemical staining; M, male; F, female; NA, not available; WT, wild-type; MDS, myelodysplastic syndrome; IBMF5, inherited bone marrow failure syndrome

for International Cancer Control. Immunohistochemical staining with a primary antibody against p53 (clone-DO7) and p16 (clone-E6H4) was performed using a Roche Ventana BenchMark GX autostainer (Ventana Medical Systems, Tucson, AZ, USA) according to the manufacturer's instructions.

Molecular analysis

To examine mutational status, we performed next-generation sequencing (NGS) with a custom panel, as previously described [32]. The gene panel was designed using SureDesign (<https://earray.chem.agilent.com/suredesign>) to cover the exons of *TP53* or genes associated with the PI3K/AKT and RAS/RAF signaling pathways (*PIK3CA*, *AKT1*, *PTEN*, *BRAF*, *MAP3K3*, *KRAS*, *NRAS*, *HRAS*, and *RASA1*) [32, 33]. Two pathologists (SO and KH) identified FFPE blocks with more than 15% abnormal tissue content. Genomic DNA was extracted from FFPE tissues using the QIAamp DNA FFPE Tissue Kit (Qiagen, Valencia, CA, USA) according to the manufacturer's instructions. On average, 70 ng of the extracted DNA was fragmented into 150–200 bp using SureSelect Fragmentation Enzyme (Agilent Technologies, Inc., Santa Clara, CA, USA). Sequence libraries were prepared using the custom SureSelect Low Input Target Enrichment System (Agilent Technologies, Inc., Santa Clara, CA, USA) according to the manufacturer's instructions and sequenced with Illumina MiSeq (Illumina, Santa Clara, CA, USA) according to the manufacturer's instructions. SureCall ver4.2 (<https://www.agilent.com/en/download-software-surecall>) was used for variant calling [34]. DNA from introns or noncoding DNA was excluded.

Results

Clinical findings

Case 1

A 63-year-old female patient complained of discomfort in the dorsum of the tongue. She had no history or family history of cancer. She was a smoker and did not consume alcohol. Intraoral examination revealed a well-circumscribed, elastic, soft mass measuring 13×9 mm in the midline to the right side of the tongue dorsum (Fig. 1a). The patient underwent surgical resection under general anesthesia. The tumor grade was T1N0M0 (stage I). No signs of recurrence or metastasis were observed at the final follow-up 72 months later.

Case 2

A 74-year-old male patient was followed up for dorsal tongue oral leukoplakia (OL) for 10 years. He had a history of bladder and ureteral cancer (urothelial carcinoma) but no family history of cancer. He was a smoker and did not consume alcohol. An intraoral examination revealed an irregular, white, flat lesion on the dorsal surface of the

tongue (Fig. 1c). The patient underwent surgical resection under general anesthesia. The tumor grade was T1N0M0 (stage I). No signs of recurrence or metastasis were observed at the final follow-up visit 60 months later.

Case 3

A 63-year-old male patient was followed-up for dorsal tongue OL for 2 years. He had a history of myelodysplastic syndrome (MDS). He had undergone hematopoietic stem cell transplantation (HSCT) for MDS 11 years prior and developed chronic graft-versus-host disease in the gastrointestinal tract one year after HSCT. He had no history of smoking or alcohol consumption. Intraoral examination revealed a white, slightly elevated lesion with an irregular surface measuring 17×9 mm at the midline of the dorsum of the tongue (Fig. 1e). The patient underwent surgical resection under general anesthesia. The tumor grade was T1N0M0 (stage I). No signs of recurrence or metastasis were observed at the last follow-up visit 13 months later.

Case 4

A 15-year-old boy was followed-up for dorsal tongue OL. The patient had a history of inherited bone marrow failure syndrome (IBMFS). He had no history of smoking or alcohol consumption. Intraoral examination revealed an erythematous, slightly elevated lesion measuring 30×15 mm in the midline to the left side of the tongue dorsum (Fig. 1g). The patient underwent surgical resection under general anesthesia. The tumor grade was T2N0M0 (stage II). SCC recurred 52 months after resection, and the patient died of immunodeficiency due to IBMFS 104 months after resection.

Histological findings

Histological examination revealed the proliferation of neoplastic squamous epithelial cells with various levels of cytological atypia (Fig. 1b, d, f, and h). The tumors exhibited irregular epithelial stratification and keratin pearl formation within the ridges. In cases 1, 2 & 4, tumors exhibiting nest or island structures infiltrated connective tissues, and we diagnosed well-differentiated SCC (Fig. 1b, d, and h). In case 3, the tumor showed a warty keratinized surface and pushing infiltration pattern with mild cytological atypia. The histological findings in case 3 were consistent with verrucous carcinoma (VC), which is a subtype of SCC (Fig. 1f). Moreover, coexistence of foci of well-differentiated conventional SCC with VC was observed in the deep area (Fig. 1f, black box). The conventional SCC components showed irregular nests of cells with higher nuclear to cytoplasmic ratios and increased size of nucleoli (Fig. 1f, black box). The distance from the deepest point of invasion of the conventional SCC component to the nearest focus of VC was

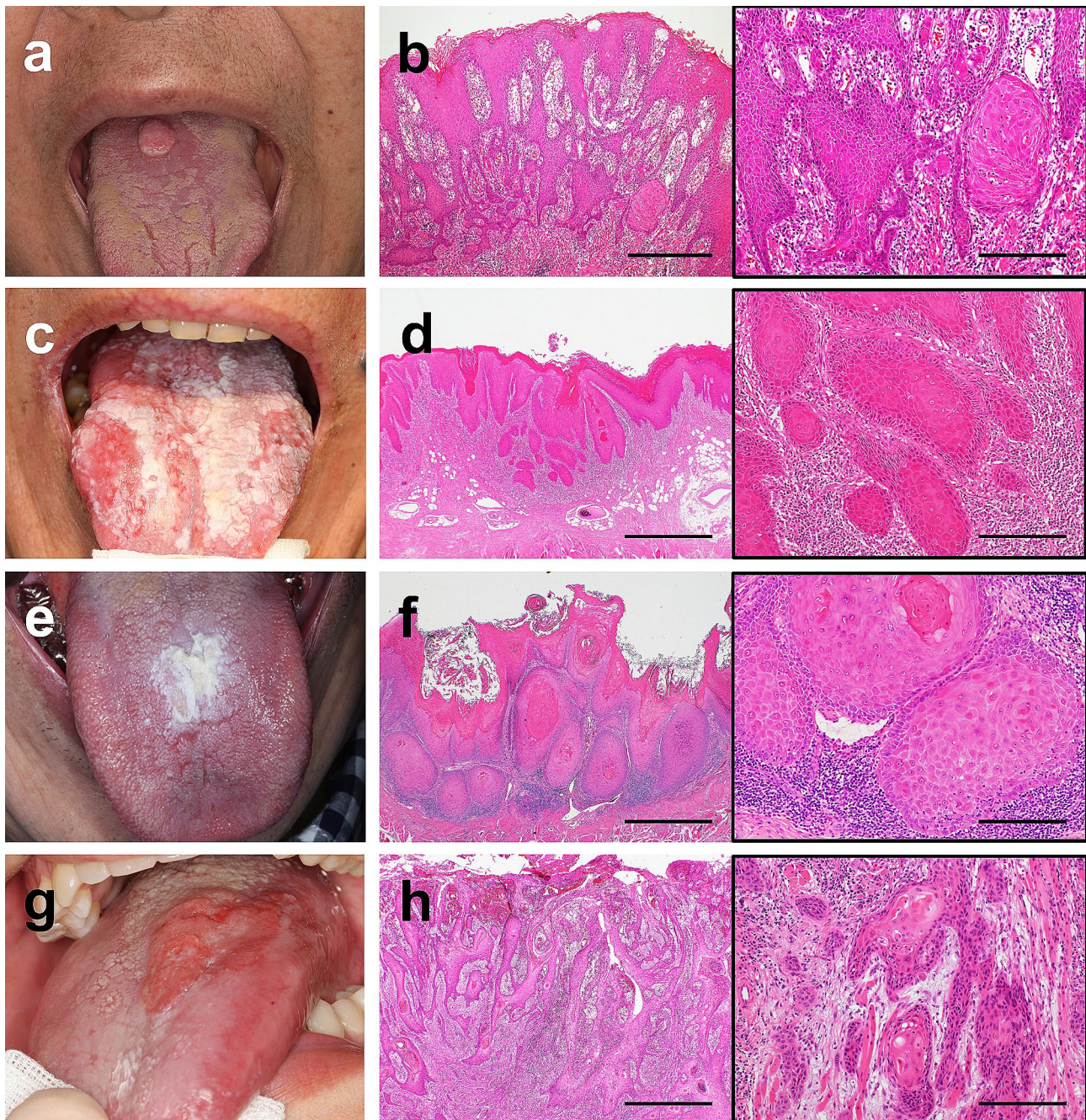


Fig. 1 Intraoral and histological findings of dorsal tongue SCC. Intraoral findings of cases 1 (a), 2 (c), 3 (e), and 4 (g). Representative histological findings for cases 1 (b), 2 (d), 3 (f), and 4 (h). Black boxes show higher magnifications of b, d, f, h. The tumors exhibited irregular epithelial stratification and keratin pearl formation within the ridges. The tumors also exhibited nests or islands and infiltrated connective tissues. SCC, squamous cell carcinoma. Scale bars: 500 μ m in Fig. b; 1000 μ m in Figs. d, f and h; 200 μ m in black boxes

approximately 1000 μ m. Thus, we finally diagnosed case 3 as VC with dysplasia or minimal invasion (VCDMI) [35].

There were no findings of vascular or perineural invasion in the specimens of either of the four cases. In addition, there were no findings suggestive of amyloidosis, granular cell tumors, lichen planus, or chronic

candidiasis. No SCC lesions were detected at locations other than the dorsum of the tongue.

Molecular genetic analysis and immunohistochemical findings

Genetic mutations were evaluated in all cases using NGS with a custom panel, as previously described [32]. NGS

identified a *TP53* p.C176F (c.527G>T) somatic mutation classified as pathogenic in case 3 and a *TP53* p.R282W (c.844 C>T) somatic mutation classified as pathogenic in case 4 (Table 1). No pathogenic variants of *PIK3CA*, *AKT1*, *PTEN*, *BRAF*, *MAP3K3*, *KRAS*, *NRAS*, *HRAS*, or *RASA1* were identified. Immunohistochemical examination of p53 revealed a wild-type staining pattern (negative to weakly positive) in cases 1–3 (Fig. 2a to c), and a strong staining pattern in basal and suprabasal layers in case 4 (Fig. 2d). The p16 immunostaining results were negative in all four cases. The results of the genetic and immunohistochemical analyses in previously reported cases and the present series are summarized in Table 1.

Discussion

We retrospectively investigated 557 cases of tongue SCC, and only four cases of SCC initially occurred on the tongue dorsum. Clinicopathological and genetic characteristics differ depending on the oral anatomical sites of OSCC [36], suggesting that dorsal tongue SCC may have

characteristics different from those of SCC occurring at other sites. To the best of our knowledge, this study is the first to report a case series involving the clinical, pathological, and genetic analyses of dorsal tongue SCC.

Several large-scale studies have reported that most tongue cancers occur on the lateral border; cancers occurring on the tongue dorsum are very rare, with an incidence of 2.9–5.1% [37–41]. These large-scale studies of tongue cancers included non-primary SCC cases, multiple SCC cases, cases with histological types other than SCC such as mucoepidermoid carcinoma, and cases without a pathological diagnosis [37–41]. In large-scale studies limited to tongue SCC, the incidence of dorsal tongue SCC was reported to be 0% (0/222 cases [2] and 0/302 cases [3]). In the three case series of dorsal tongue SCC, including the present study, the incidence of SCC initially occurring on the tongue dorsum was 5.1% (5/99 cases) [4], 0.82% (3/368 cases) [5], and 0.72% (4/557 cases), accounting for approximately 1% incidence. The country distribution of reported dorsal tongue SCC

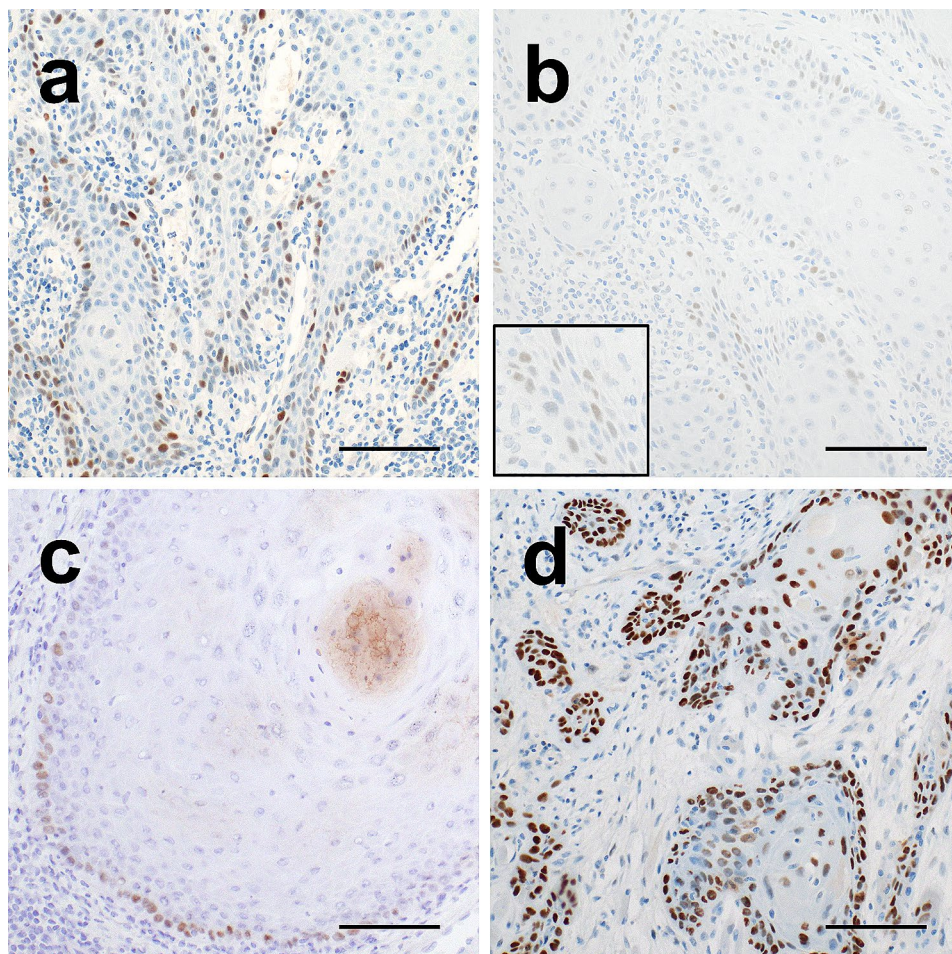


Fig. 2 Immunohistochemical analysis of dorsal tongue SCC. Representative immunohistochemical staining of p53 in case 1 (a), 2 (b), 3 (c), and 4 (d). Cases 1–3 showed normal wild-type expression pattern (negative to weakly positive), and case 4 showed strong expression. SCC, squamous cell carcinoma. Scale bars: 100 µm in Figs. a–d

was as follows: Japan had the most cases (39.3%, 11/28 cases), followed by Israel (25%, 7/28 cases), and the USA (17.9%, 5/28 cases). Although regional differences might affect the incidence of dorsal tongue SCC, its occurrence remains rare. To summarize the 28 cases of dorsal tongue SCC reported thus far, the mean age of patients was 57.96 years (range: 15–80 years), and the male-to-female ratio was 13:15 [4–21]. In general, most patients with tongue SCC are aged 50–70 years, with the occurrence slightly predominating in males [1, 37, 38, 41]. Histologically, dorsal tongue SCC has been reported to be well or moderately differentiated (75 and 12.5%, respectively), while most tongue SCCs are well or moderately differentiated [1, 41]. Although it is difficult to compare dorsal tongue SCC with tongue SCC, the clinical and pathological findings were not significantly different.

Verrucous carcinoma is a well differentiated non-metastatic SCC subtype that may progress to invasive conventional SCC [1]. Approximately 20% of VC cases of the oral cavity coexist with a conventional SCC component [42]. Patel et al. categorized VC into three types: pure VC, VCDMI, and SCC arising in VC (SCC-VC) [35]. Cases with a distance of less than 2 mm from the deepest point of invasion of the conventional SCC component to the nearest focus of VC are defined as VCDMI, and cases with a distance of 2 mm or more are defined as SCC-VC [35]. In case 3 of the present study, the distance from the deepest point of invasion of the conventional SCC component to the nearest focus of VC was approximately 1000 μm . Thus, we finally diagnosed case 3 as VCDMI. Compared to SCC-VC, VC and VCDMI show good prognosis with a low recurrence rate, either locally or in regional lymph nodes [35]. Consistently, case 3 showed no signs of recurrence or metastasis at the last follow-up visit 13 months later.

Somatic mutations in *TP53* and genes associated with the PI3K/AKT and RAS/RAF signaling pathways have potential roles as drivers of HNSCC and OSCC development [1, 22–27]. Kobayashi et al. reported that the most frequently mutated gene among 284 HNSCC cases was *TP53* (67%), followed by *PIK3CA* (8%), *AKT1* (4%), and *HRAS* (3%) [26]. Similarly, frequently mutated genes in OSCC were *TP53* (65–66%), *PIK3CA* (16.8–20%), *AKT1* (0–14%), and *HRAS* (9–9.3%) [23, 25]. Although no mutations in the PI3K/AKT and RAS/RAF signaling pathways were detected in the present study, we identified somatic *TP53* mutations in 50% of the cases (2/4 cases; Table 1). The results of the genetic analysis in the present study are consistent with the distribution of somatic mutations in HNSCC and OSCC [1, 23, 25, 26]. *TP53* is activated in response to DNA damage and is mutated in most common human malignancies, with various ranges depending on the stage and etiology of the tumors [43]. Both *TP53* p.C176F and p.R282W mutations are in the

DNA-binding domain of p53 (Table 1) and have been reported as pathogenic and hotspot mutations in HNSCC [44]. Two previous dorsal tongue SCC cases have been reported with p53 immunohistochemical staining; in one case, a germline *TP53* mutation was identified (Table 1) [19, 20]. Combining these cases with those reported in the present study, the frequency of occurrence of *TP53* mutations was 60% (3/5 cases) and the frequency of mutant p53 immunostaining pattern (null or positive) was 50% (3/6 cases; Table 1). These observations suggest that somatic *TP53* mutations are involved in the development of a subset of SCC of the tongue dorsum.

A limitation of this study is its small sample size owing to the rarity of dorsal tongue SCC. Further studies are required to determine the genetic characteristics of dorsal tongue SCC and the association between gene mutations and SCC biology in a larger cohort of cases.

Conclusions

In the present study, we describe four cases of previously unreported genetic characteristics of dorsal tongue SCC. Our results suggest that somatic *TP53* mutations may contribute to the development of a subset of dorsal tongue SCC; however, more cases with genetic analysis need to be accumulated.

Abbreviations

AKT1	AKT serine/threonine kinase 1
BRAF	B-RAF proto-oncogene, serine/threonine kinase
FFPE	Formalin-Fixed Paraffin-Embedded
HNSCC	Head and Neck Squamous Cell Carcinoma
HRAS	HRAS proto-oncogene, GTPase
HSCT	Hematopoietic Stem Cell Transplantation
IBMFS	Inherited Bone Marrow Failure Syndrome
KRAS	KRAS proto-oncogene, GTPase
MAP3K3	Mitogen-Activated Protein Kinase 3
NGS	Next-Generation Sequencing
NRAS	NRAS proto-oncogene, GTPase
OL	Oral Leukoplakia
OSCC	Oral Squamous Cell Carcinoma
PI3K	Phosphatidylinositol 3-Kinase
PIK3CA	Phosphatidylinositol-4, 5-Bisphosphate 3-Kinase Catalytic subunit Alpha
PTEN	Phosphatase and Tensin Homolog
RASA1	RAS P21 Protein Activator 1
SCC	Squamous Cell Carcinoma
VC	Verrucous Carcinoma
VCDMI	Verrucous Carcinoma with Dysplasia or Minimal Invasion

Acknowledgements

NGS analysis was performed by the Research Institute for Microbial Diseases (Osaka University), and the authors acknowledge the support of the staff.

Author contributions

All authors contributed to this work, and reviewed and approved the manuscript for submission. S.O. and K.H. contributed equally to this study. S.O.: Methodology, Validation, Investigation, Resources, Data Curation, Writing – Original Draft, Writing – Review & Editing, Visualization, Supervision, Project Administration, Funding Acquisition. K.H.: Methodology, Validation, Investigation, Resources, Data Curation, Writing the Original Draft, Writing the Review & Editing, Visualization, Supervision, Project Administration, Conceptualization. S.S.: Resources. K.O.: Resources. M.M.: Investigation. K.H.: Investigation. A.F.: Investigation. K.S.: Conceptualization. S.N.: Resources.

A.T.: Resources. S.T.: Resources, Supervision. Y.H.: Validation, Investigation. E.M.: Resources, Supervision. D.M.: Validation, Investigation. H.N.: Resources, Supervision. T.I.: Resources, Supervision. T.T.: Supervision. H.Y.: Writing the Review & Editing.

Funding

This study was supported by the Japan Society for the Promotion of Science (JSPS), KAKENHI Number: 21K17114).

Data availability

The surgical materials and datasets analyzed in this study are available from the corresponding author upon request.

Declarations

Ethical approval and consent to participate

This study was approved by the Ethics Review Board of the Graduate School of Dentistry at Osaka University (No. R5-E11) and performed in accordance with the committee guidelines and regulations.

Consent for publication

The requirement for informed consent was waived by the Ethics Review Board.

Competing interests

The authors declare no competing interests.

Author details

¹Department of Pathology and Oncology, Okayama University Graduate School of Medicine, Dentistry and Pharmaceutical Sciences, 2-5-1 Shikata-cho, Kita-ku, Okayama, Okayama 700-8558, Japan

²Department of Oral and Maxillofacial Pathology, Osaka University Graduate School of Dentistry, 1-8 Yamadaoka, Suita, Osaka 565-0871, Japan

³Department of Oral and Maxillofacial Surgery, Kagawa University Faculty of Medicine, 1750-1 Ikenobe, Miki-cho, Kita-gun, Kagawa 761-0793, Japan

⁴Department of Oral and Maxillofacial Surgery, Okayama University Graduate School of Medicine, Dentistry and Pharmaceutical Sciences, 2-5-1 Shikata-cho, Kita-ku, Okayama, Okayama 700-8558, Japan

⁵Department of Oral and Maxillofacial Surgery, Kagawa Prefectural Central Hospital, 1-2-1 Asahimachi, Takamatsu, Kagawa 760-8557, Japan

⁶Department of Clinical Pathophysiology, Matsumoto Dental University Graduate School of Oral Medicine, 1780 Gobara Hirooka, Shiojiri, Nagano 399-0781, Japan

⁷Department of Pathology, Kagawa Prefectural Central Hospital, 1-2-1 Asahimachi, Takamatsu, Kagawa 760-8557, Japan

⁸Department of Pathology, Osaka University Graduate School of Medicine, 2-2 Yamadaoka, Suita, Osaka 565-0871, Japan

⁹Genome Information Research Center, Research Institute for Microbial Diseases, Osaka University, 3-1 Yamadaoka, Suita, Osaka 565-0871, Japan

¹⁰Department of Oral Pathology and Medicine, Okayama University Graduate School of Medicine, Dentistry and Pharmaceutical Sciences, 2-5-1 Shikata-cho, Kita-ku, Okayama, Okayama 700-8558, Japan

¹¹Department of Central Laboratory and Surgical Pathology, NHO Osaka National Hospital, 2-1-14 Hoenzaka, Chuo-ku, Osaka, Osaka 540-0006, Japan

Received: 14 November 2023 / Accepted: 13 April 2024

Published online: 22 April 2024

References

1. El-Naggar AK, Chan JKC, Grandis JR, Takata T, Slootweg PJ. WHO classification head and neck tumours. 4th ed. International Agency for Research on Cancer; 2017.
2. Mashberg A, Meyers H. Anatomical site and size of 222 early asymptomatic oral squamous cell carcinomas: a continuing prospective study of oral cancer. *Int. J. Cancer*. 1976;37:2149–57. [https://doi.org/10.1002/1097-0142\(197605\)37:5%3C2149::aid-cnrc2820370502%3E3.0.co;2-g](https://doi.org/10.1002/1097-0142(197605)37:5%3C2149::aid-cnrc2820370502%3E3.0.co;2-g).
3. Ogus HD, Bennett MH. Carcinoma of the dorsum of the tongue: a rarity or misdiagnosis. *Br J Oral Surg*. 1978;16:115–24. [https://doi.org/10.1016/0007-117x\(78\)90021-5](https://doi.org/10.1016/0007-117x(78)90021-5).
4. Goldenberg D, Ardekian L, Rachmiel A, Peled M, Joachims HZ, Laufer D. Carcinoma of the dorsum of the tongue. *Head Neck*. 2000;22:190–4. [https://doi.org/10.1002/\(sici\)1097-0347\(200003\)22:2%3C190::aid-hed12%3E3.0.co;2-o](https://doi.org/10.1002/(sici)1097-0347(200003)22:2%3C190::aid-hed12%3E3.0.co;2-o).
5. Okubo M, Iwai T, Nakashima H, Koizumi T, Oguri S, Hirota M, et al. Squamous cell carcinoma of the tongue dorsum: incidence and treatment considerations. *Indian J Otolaryngol Head Neck Surg*. 2017;69:6–10. <https://doi.org/10.1007/s12070-016-0979-z>.
6. Sharp GS, Bullock WK. Carcinoma arising in glossitis rhombica mediana. *Cancer*. 1958;11:148–50. [https://doi.org/10.1002/1097-0142\(195801/02\)11:1%3C148::aid-cnrc2820110126%3E3.0.co;2-l](https://doi.org/10.1002/1097-0142(195801/02)11:1%3C148::aid-cnrc2820110126%3E3.0.co;2-l).
7. Burkes EJ, Lewis JR. Carcinoma arising in the area of median rhomboid glossitis. *Oral Surg Oral Med Oral Pathol*. 1976;41:649–52. [https://doi.org/10.1016/0030-4220\(76\)90318-2](https://doi.org/10.1016/0030-4220(76)90318-2).
8. Pogrel MA, Weldon LL. Carcinoma arising in erosive lichen planus in the midline of the dorsum of the tongue. *Oral Surg Oral Med Oral Pathol*. 1983;55:62–6. [https://doi.org/10.1016/0030-4220\(83\)90307-9](https://doi.org/10.1016/0030-4220(83)90307-9).
9. Fowler CB, Rees TD, Smith BR. Squamous cell carcinoma on the dorsum of the tongue arising in a long-standing lesion of erosive lichen planus. *J Am Dent Assoc*. 1987;115:707–10. <https://doi.org/10.14219/jada.archive.1987.0300>.
10. Katz RW, Brahim JS, Travis WD. Oral squamous cell carcinoma arising in a patient with long-standing lichen planus. A case report. *Oral Surg Oral Med Oral Pathol*. 1990;70:282–5. [https://doi.org/10.1016/0030-4220\(90\)90141-e](https://doi.org/10.1016/0030-4220(90)90141-e).
11. Gorsky M, Raviv M, Taicher S. Squamous cell carcinoma mimicking median rhomboid glossitis region: report of a case. *J Oral Maxillofac Surg*. 1993;51:798–800. [https://doi.org/10.1016/s0278-2391\(10\)80427-6](https://doi.org/10.1016/s0278-2391(10)80427-6).
12. Lustig JP, Lugassy G, Neder A, Sigler E. Head and neck carcinoma in Fanconi's anaemia—report of a case and review of the literature. *Eur J Cancer B Oral Oncol*. 1995;31B:68–72. [https://doi.org/10.1016/0964-1955\(94\)00044-5](https://doi.org/10.1016/0964-1955(94)00044-5).
13. Camisa C, Hamaty FG, Gay JD. Squamous cell carcinoma of the tongue arising in lichen planus: a case report and review of the literature. *Cutis*. 1998;62:175–8.
14. Coombes D, Cascarini L, Booth PW. Carcinoma of the midline dorsum of the tongue. *Br J Oral Maxillofac Surg*. 2008;46:485–6. <https://doi.org/10.1016/j.bjoms.2007.11.022>.
15. Pastore L, Fiorella ML, Fiorella R, Lo Muzio L. Multiple masses on the tongue of a patient with generalized mucocutaneous lesions. *PLOS Med*. 2008;5:e212. <https://doi.org/10.1371/journal.pmed.0050212>.
16. Irani S. Squamous cell carcinoma arising in oral Lichen Planus. *DJH*. 2010;1:49–52.
17. Ohta K, Yoshimura H. Squamous cell carcinoma of the dorsal tongue. *CMAJ*. 2019;191:E1310. <https://doi.org/10.1503/cmaj.190677>.
18. Toh T, Akita T, Saito M, Shigetomi T. Squamous cell carcinoma initially arising in the midline of the dorsum of the tongue in a young adult: a case report and review of the literature. *J Oral Maxillofac Surg Med Pathol*. 2019;31:185–8. <https://doi.org/10.1016/j.joms.2018.12.001>.
19. Yamasaki S, Tani R, Sakurai S, Toratani S, Okamoto T. Oral squamous cell carcinoma of the tongue dorsum with multiple cancer-associated mutations in the TP53 gene. *Oral Oncol*. 2020;109:104774. <https://doi.org/10.1016/j.oraloncology.2020.104774>.
20. Abe A, Kono T, Wakamatsu R, Kamate M, Kawano K. Usefulness of immunohistochemical diagnosis for squamous cell carcinoma of the dorsum of the tongue: a case report. *Oral Sci Int*. 2023;20:143–48. <https://doi.org/10.1002/osi2.1159>.
21. Ganganna V, Nandi S, Saini S, Arora A. Rare case of squamous cell carcinoma of midline dorsum of tongue: diagnostic and management dilemma. *Indian J Otolaryngol Head Neck Surg*. 2023;76:1121–2. <https://doi.org/10.1007/s12070-023-04149-7>.
22. Agrawal N, Frederick MJ, Pickering CR, Bettgeowda C, Chang K, Li RJ, et al. Exome sequencing of head and neck squamous cell carcinoma reveals inactivating mutations in NOTCH1. *Science*. 2011;333:1154–7. <https://doi.org/10.1126/science.1206923>.
23. Pickering CR, Zhang J, Yoo SY, Bengtsson L, Moorthy S, Neskey DM, et al. Integrative genomic characterization of oral squamous cell carcinoma identifies frequent somatic drivers. *Cancer Discov*. 2013;3:770–81. <https://doi.org/10.1158/2159-8290.CD-12-0537>.
24. Cancer Genome Atlas Network. Comprehensive genomic characterization of head and neck squamous cell carcinomas. *Nature*. 2015;517:576–82. <https://doi.org/10.1038/nature14129>.

25. Chen SJ, Liu H, Liao CT, Huang PJ, Huang Y, Hsu A, et al. Ultra-deep targeted sequencing of advanced oral squamous cell carcinoma identifies a mutation-based prognostic gene signature. *Oncotarget*. 2015;6:18066–80. <https://doi.org/10.18632/oncotarget.3768>.
26. Kobayashi K, Yoshimoto S, Matsumoto F, Ando M, Murakami N, Omura G, et al. All-exon TP53 sequencing and protein phenotype analysis accurately predict clinical outcome after surgical treatment of head and neck squamous cell carcinoma. *Ann Surg Oncol*. 2019;26:2294–303. <https://doi.org/10.1245/s10434-019-07287-x>.
27. Starzyńska A, Sejda A, Adamska P, Marvaso G, Sakowicz-Burkiewicz M, Adamski Ł, et al. Prognostic value of the PIK3CA, AKT, and PTEN mutations in oral squamous cell carcinoma: literature review. *Arch Med Sci*. 2021;17:207–17. <https://doi.org/10.5114/aoms.2020.100780>.
28. Samuels Y, Waldman T. Oncogenic mutations of PIK3CA in human cancers. *Curr Top Microbiol Immunol*. 2010;347:21–41. https://doi.org/10.1007/82_2010_68.
29. Peyssonnaud C, Eychène A. The Raf/MEK/ERK pathway: new concepts of activation. *Biol Cell*. 2001;93:53–62. [https://doi.org/10.1016/s0248-4900\(01\)01125-x](https://doi.org/10.1016/s0248-4900(01)01125-x).
30. Li FP, Fraumeni JF Jr, Mulvihill JJ, Blattner WA, Dreyfus MG, Tucker MA, et al. A cancer family syndrome in twenty-four kindreds. *Cancer Res*. 1988;48:5358–62.
31. Birch JM, Hartley AL, Tricker KJ, Prosser J, Condie A, Kelsey AM, et al. Prevalence and diversity of constitutional mutations in the p53 gene among 21 Li-Fraumeni families. *Cancer Res*. 1994;54:1298–304.
32. Hirose K, Shibahara T, Teramoto A, Usami Y, Ono S, Iwamoto Y, et al. Clear cell squamous cell carcinoma of the maxillary gingiva associated with PIK3CA and HRAS mutations: report of a case and literature review. *Head Neck Pathol*. 2023;17:1026–33. <https://doi.org/10.1007/s12105-023-01580-8>.
33. SureDesign. <https://earray.chem.agilent.com/suredesign>. Accessed 10 Nov 2023.
34. SureCall. 2023. <https://www.agilent.com/en/download-software-surecall>. Accessed 10 Nov 2023.
35. Patel KR, Chernock RD, Sinha P, Müller S, El-Mofty SK, Lewis JS Jr. Verrucous carcinoma with dysplasia or minimal invasion: a variant of verrucous carcinoma with extremely favorable prognosis. *Head Neck Pathol*. 2015;9:65–73. <https://doi.org/10.1007/s12105-014-0551-7>.
36. Al-Rawi NH, Hachim IY, Hachim MY, Salmeh A, Uthman AT, Marei H. Anatomical landscape of oral squamous cell carcinoma: a single cancer center study in UAE. *Heliyon*. 2023;9:e15884. <https://doi.org/10.1016/j.heliyon.2023.e15884>.
37. Frazell EL, Lucas JC Jr. Cancer of the tongue. Report of the management of 1,554 patients. *Cancer*. 1962;15:1085–99. [https://doi.org/10.1002/1097-0142\(196211/12\)15:6%3C1085::aid-cnrcr2820150602%3E3.0.co;2-r](https://doi.org/10.1002/1097-0142(196211/12)15:6%3C1085::aid-cnrcr2820150602%3E3.0.co;2-r).
38. Flamant R, Hayem M, Lazar P, Denoix P. Cancer of the tongue. A study of 904 cases. *Cancer*. 1964;17:377–85. [https://doi.org/10.1002/1097-0142\(196403\)17:3%3C377::aid-cnrcr2820170313%3E3.0.co;2-y](https://doi.org/10.1002/1097-0142(196403)17:3%3C377::aid-cnrcr2820170313%3E3.0.co;2-y).
39. Saxena VS. Cancer of the tongue: local control of the primary. *Cancer*. 1970;26:788–94. [https://doi.org/10.1002/1097-0142\(197010\)26:4%3C788::aid-cnrcr2820260407%3E3.0.co;2-6](https://doi.org/10.1002/1097-0142(197010)26:4%3C788::aid-cnrcr2820260407%3E3.0.co;2-6).
40. Mendelson BC, Woods JE, Beahrs OH. Neck dissection in the treatment of carcinoma of the anterior two-thirds of the tongue. *Surg Gynecol Obstet*. 1976;143:75–80.
41. Kari S, Alho OP, Jokinen K, Hyrynkanas K, Läärrä E. Carcinoma of the oral tongue in northern Finland: trends in overall incidence and patient and tumour characteristics. *J Oral Pathol Med*. 1997;26:480–3. <https://doi.org/10.1111/j.1600-0714.1997.tb00020.x>.
42. Medina JE, Dichtel W, Luna MA. Verrucous-squamous carcinomas of the oral cavity. A clinicopathologic study of 104 cases. *Arch Otolaryngol*. 1984;110:437–40. <https://doi.org/10.1001/archotol.1984.00800330019003>.
43. Hainaut P, Hollstein M. p53 and human cancer: the first ten thousand mutations. *Adv Cancer Res*. 2000;77:81–137. [https://doi.org/10.1016/s0065-230x\(08\)60785-x](https://doi.org/10.1016/s0065-230x(08)60785-x).
44. Petitjean A, Mathe E, Kato S, Ishioka C, Tavtigian SV, Hainaut P, et al. Impact of mutant p53 functional properties on TP53 mutation patterns and tumor phenotype: lessons from recent developments in the IARC TP53 database. *Hum Mutat*. 2007;28:622–9. <https://doi.org/10.1002/humu.20495>.

Publisher's Note

Springer Nature remains neutral with regard to jurisdictional claims in published maps and institutional affiliations.