

RESEARCH

Open Access



Generation and characterization of genome-modified chondrocyte-like cells from the zebra finch cell line immortalized by *c-MYC* expression

Kyung Min Jung, Young Min Kim, Eunhui Yoo and Jae Yong Han*

Abstract

Background: Due to their cost effectiveness, ease of use, and unlimited supply, immortalized cell lines are used in place of primary cells for a wide range of research purposes, including gene function studies, CRISPR-based gene editing, drug metabolism tests, and vaccine or therapeutic protein production. Although immortalized cell lines have been established for a range of animal species, there is still a need to develop such cell lines for wild species. The zebra finch, which is used widely as a model species to study the neurobiological basis of human speech disorders, has been employed in several functional studies involving gene knockdown or the introduction of exogenous transgenes *in vivo*; however, the lack of an immortalized zebra finch cell line has hampered precise genome editing studies.

Results: Here, we established an immortalized cell line by a single genetic event, expression of the *c-MYC* oncogene, in zebra finch embryonic fibroblasts and examined its potential suitability for gene targeting investigations. Retroviral vector-mediated transduction of *c-MYC* was used to immortalize zebra finch primary fibroblasts; the transformed cells proliferated stably over several passages, resulting in the expression of chondrocyte-specific genes. The transfection efficiency of the immortalized cells was much higher than that of the primary cells. Targeted knockout of the *SOX9* gene, which plays a role in the differentiation of mesenchymal progenitor cells into chondrocytes, was conducted *in vitro* and both apoptosis and decreased expression levels of chondrogenic marker genes were observed in edited cells.

Conclusions: The *c-MYC* induced immortalized chondrocyte-like cell line described here broadens the available options for establishing zebra finch cell lines, paves the way for in-depth biological researches, and provides convenient approaches for biotechnology studies, particularly genomic modification research.

Keywords: Zebra finch, Immortalized cell line, *c-MYC*, Chondrocyte-like cells, Gene editing

Background

Cellular senescence and stress caused by cell culture precludes the indefinite culture of primary cells *in vitro* [1]. Immortalized cell lines do not require extraction from live animals and can provide relatively consistent and reproducible results compared to primary cells [2]. Consequently, immortalized cell lines have become an important tool for various applications, including analyses of

*Correspondence: jaehan@snu.ac.kr

Department of Agricultural Biotechnology and Research Institute of Agriculture and Life Sciences, College of Agriculture and Life Sciences, Seoul National University, 1 Gwanak-ro, Gwanak-gu, Seoul 08826, Korea



© The Author(s) 2022. **Open Access** This article is licensed under a Creative Commons Attribution 4.0 International License, which permits use, sharing, adaptation, distribution and reproduction in any medium or format, as long as you give appropriate credit to the original author(s) and the source, provide a link to the Creative Commons licence, and indicate if changes were made. The images or other third party material in this article are included in the article's Creative Commons licence, unless indicated otherwise in a credit line to the material. If material is not included in the article's Creative Commons licence and your intended use is not permitted by statutory regulation or exceeds the permitted use, you will need to obtain permission directly from the copyright holder. To view a copy of this licence, visit <http://creativecommons.org/licenses/by/4.0/>. The Creative Commons Public Domain Dedication waiver (<http://creativecommons.org/publicdomain/zero/1.0/>) applies to the data made available in this article, unless otherwise stated in a credit line to the data.

drug efficacy and cytotoxicity, production of biopharmaceuticals or vaccines, and studies of gene function and genome editing [3]. Various immortalized cell lines have been established for numerous species [1] and modified cell lines with enhanced properties, such as improved transfection efficiency or protein yields, are being developed and used extensively [4, 5]. Several avian cell lines, particularly those from chickens, have been developed and commercialized; these cell lines have been immortalized using various methods, such as serial passaging, carcinogenic chemical treatment, and the introduction of oncogenes [6–9]. Given that numerous avian species are being used as experimental model animals, the number of endangered bird species is increasing, and cell resources are still limited, it is necessary to expand cell line development research into more diverse avian species.

The zebra finch (*Taeniopygia guttata*) is used as an experimental model animal for neurobiological research. In particular, zebra finches are useful for studies examining song development and auditory processing because they are able to learn vocalizations by imitating a singing adult, similar to humans who acquire spoken language [10]. Functional gene analyses of zebra finches are typically performed by transient knockdown or overexpression of genes of interest via *in vivo* electroporation or surgical injection of viruses into specific brain regions, both of which require a high level of technical skill [11–14]. Although some groups have generated transgenic zebra finches expressing a mutant foreign gene introduced by a viral system, precise genome-edited zebra finches have not yet been developed [15, 16]. In general, cell lines are used to analyze gene function and pre-validate the CRISPR editing system *in vitro*, but the zebra finch cell line is still lacking, and primary cells display rapid senescence and a low transfection efficiency [17]. Accordingly, a cell line with myogenic identity was generated recently by introducing SV40 large and small T antigens into zebra finch embryonic fibroblasts (ZEFs), and the utility of this cell line was demonstrated using the CRISPR/Cas9 knockout system [18].

Various methods of generating cell lines have been developed; the selection of an appropriate approach requires consideration of efficiency, applicability, and expected cell characteristics. Recently, several studies have demonstrated that primary cells from mammals can be immortalized by introducing a single reprogramming factor, *c-MYC* [19–21]. In 2007, the ability of *c-MYC* to immortalize human cells was demonstrated by its introduction into human primary foreskin fibroblasts via a retroviral system [20]. Subsequently, this method has been used to produce an immortalized mouse Kupffer cell line, providing a useful means to study the function of these cells *in vitro* [19]. In addition, porcine fibroblasts

have been successfully immortalized by *c-MYC* expression and showed chondrocyte-like cell (CLC) characteristics [21].

In this study, we used *c-MYC* expression to establish an immortalized zebra finch cell line exhibiting CLC characteristics and verified its use for targeted gene editing and gene function studies. This approach broadens the available options for establishing zebra finch cell lines, paves the way for in-depth biological studies, and provides a convenient approach to genomic modification studies.

Results

The zebra finch immortalized cell line avoided cellular senescence and exhibited telomerase activity

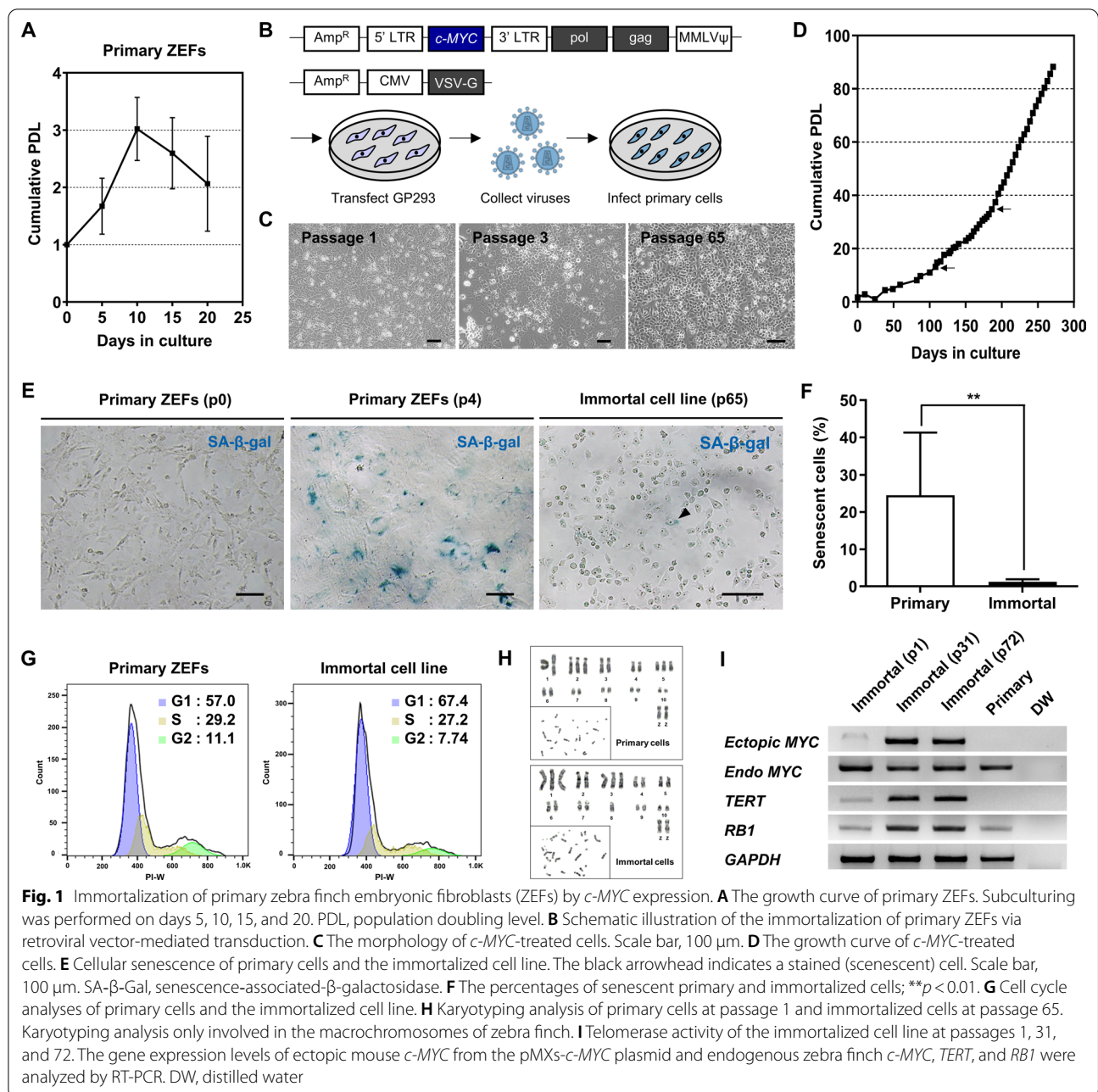
To investigate the proliferative ability of primary ZEFs, we assessed the population doubling level (PDL) and found that it decreased sharply after passage 2 (Fig. 1A). To generate an immortalized cell line, primary ZEFs at early passage numbers were transduced with retroviruses carrying the mouse *c-MYC* gene (Fig. 1B). Transduced cells underwent a morphological change at passage 3 (Fig. 1C), successfully bypassed cellular senescence, and continued to divide for more than 250 days (Fig. 1D). Only 1.24% of the immortalized cells displayed senescence at passage 65, whereas 24.5% of the primary ZEFs displayed senescence at passage 4 (Fig. 1E, F). Cell cycle analyses revealed similar profiles for the immortalized cells and the early passage primary ZEFs (Fig. 1G), and a karyotyping analysis revealed that both primary and immortalized cells showed aneuploidy on two or three different chromosomes (Fig. 1H and Additional file 1: Fig. S1). The number of karyotyped cells for each line was 20, and all karyotyped cells displayed the same karyotype. The telomerase activity of the immortalized cell line was confirmed by *TERT* and *RBI* gene expression levels, which became more robust with passage of the cell line (Fig. 1I).

The zebra finch immortalized cell line showed chondrocyte-like characteristics

The immortalized cells displayed chondrocyte-like morphology and were stained intensely with Alcian blue (Fig. 2A). In addition, the immortalized cells expressed higher levels of chondrocyte marker genes, including *ACAN*, *SOX5*, *SOX6*, *SOX9*, and *COL2A1*, than the primary ZEFs (Fig. 2B, C), supporting the proposal that they had developed into CLCs.

The immortalized cell line displayed enhanced transfection efficiency

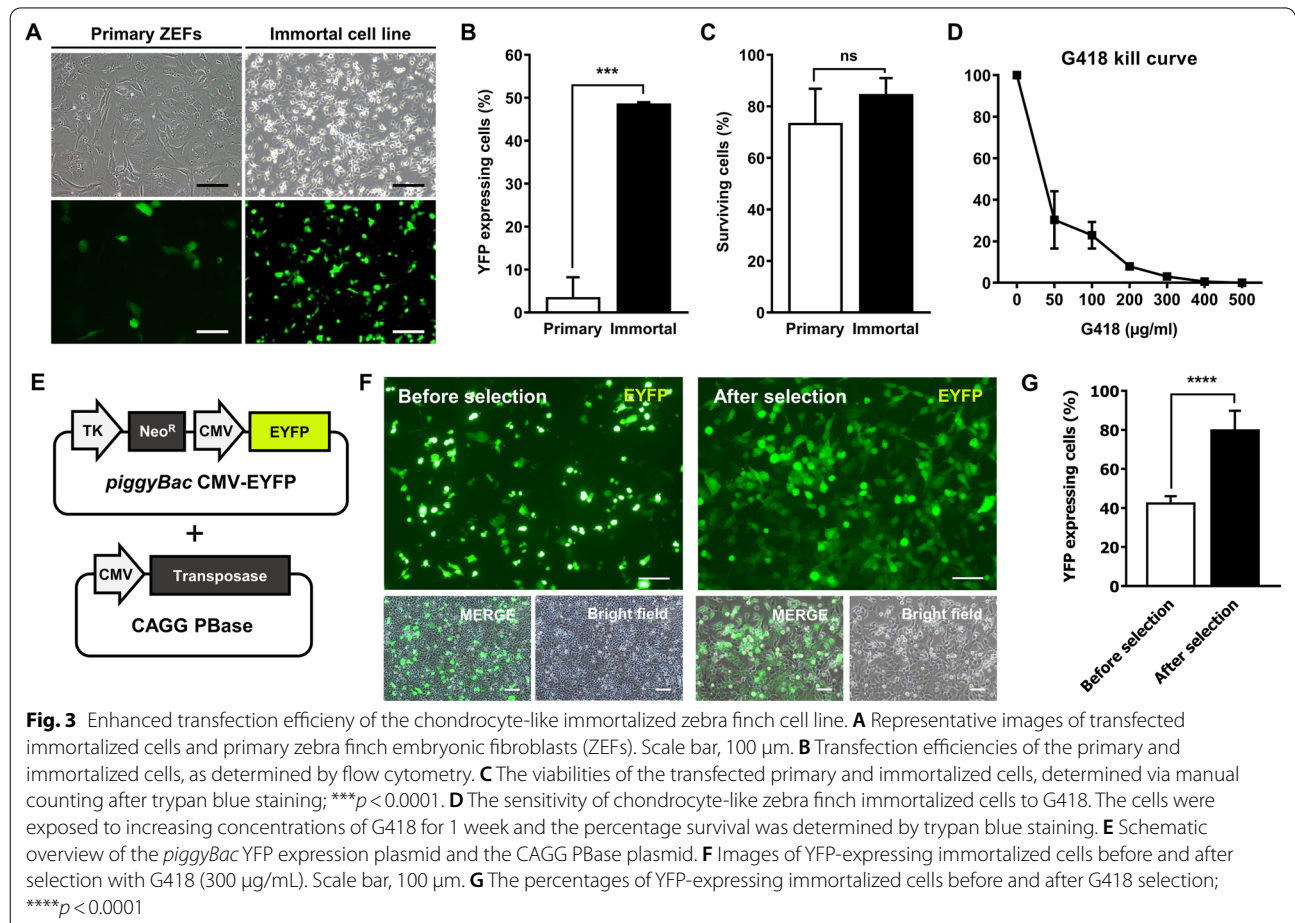
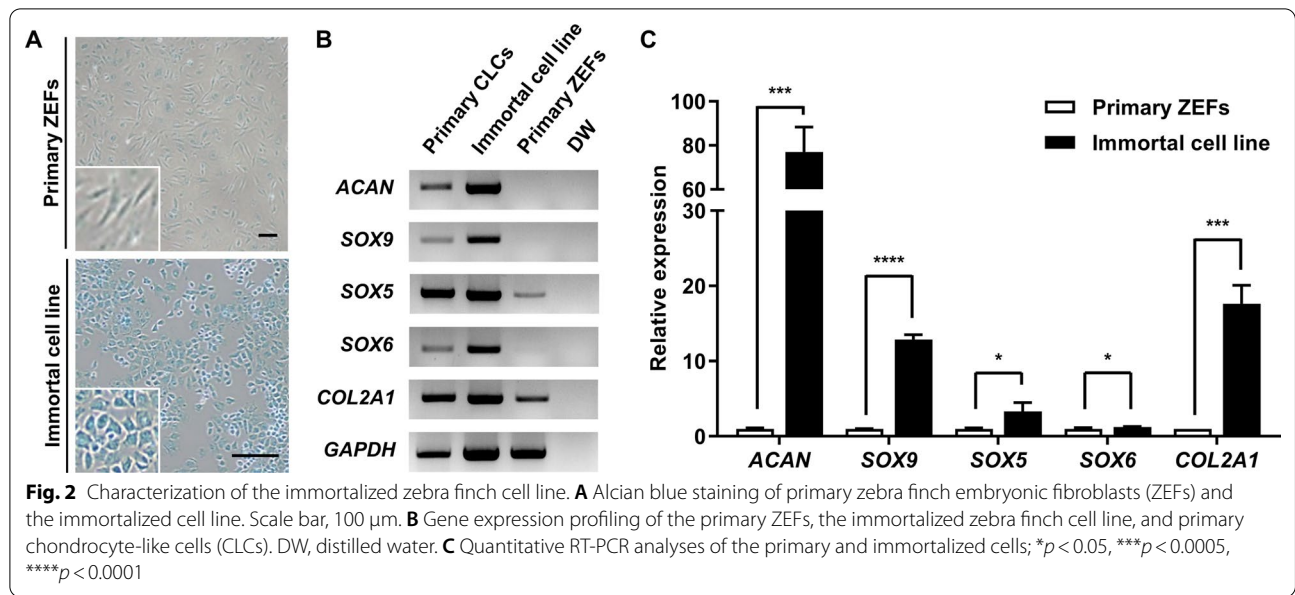
To investigate the transfection efficiency of the immortalized cell line, primary ZEFs and immortalized cells were transfected with a YFP-expressing vector via



lipofection (Fig. 3A). The immortalized cell line displayed a significantly higher proportion of YFP-positive cells ($48.67 \pm 0.31\%$) than the primary ZEFs ($3.60 \pm 4.60\%$) (Fig. 3B), whereas the viability rates of the two cell types were similar ($84.83 \pm 6.17\%$ and $73.59 \pm 13.25\%$, respectively) (Fig. 3C).

A G418 kill curve assessment was performed to determine the optimal concentration required to establish

a stable transfected cell line. The lowest concentration of G418 that killed all non-transfected immortalized cells after a 1 week exposure period was $300 \mu\text{g}/\text{mL}$ (Fig. 3D). Subsequently, transfected immortalized cells were enriched by selection with $300 \mu\text{g}/\text{mL}$ G418 (Fig. 3E–G). These findings indicate that the transfection efficiency of immortalized cell lines is enhanced in vitro and these cells have the potential to be utilized for gene editing experiments.



Targeted *SOX9* knockout in immortalized chondrocyte-like cells

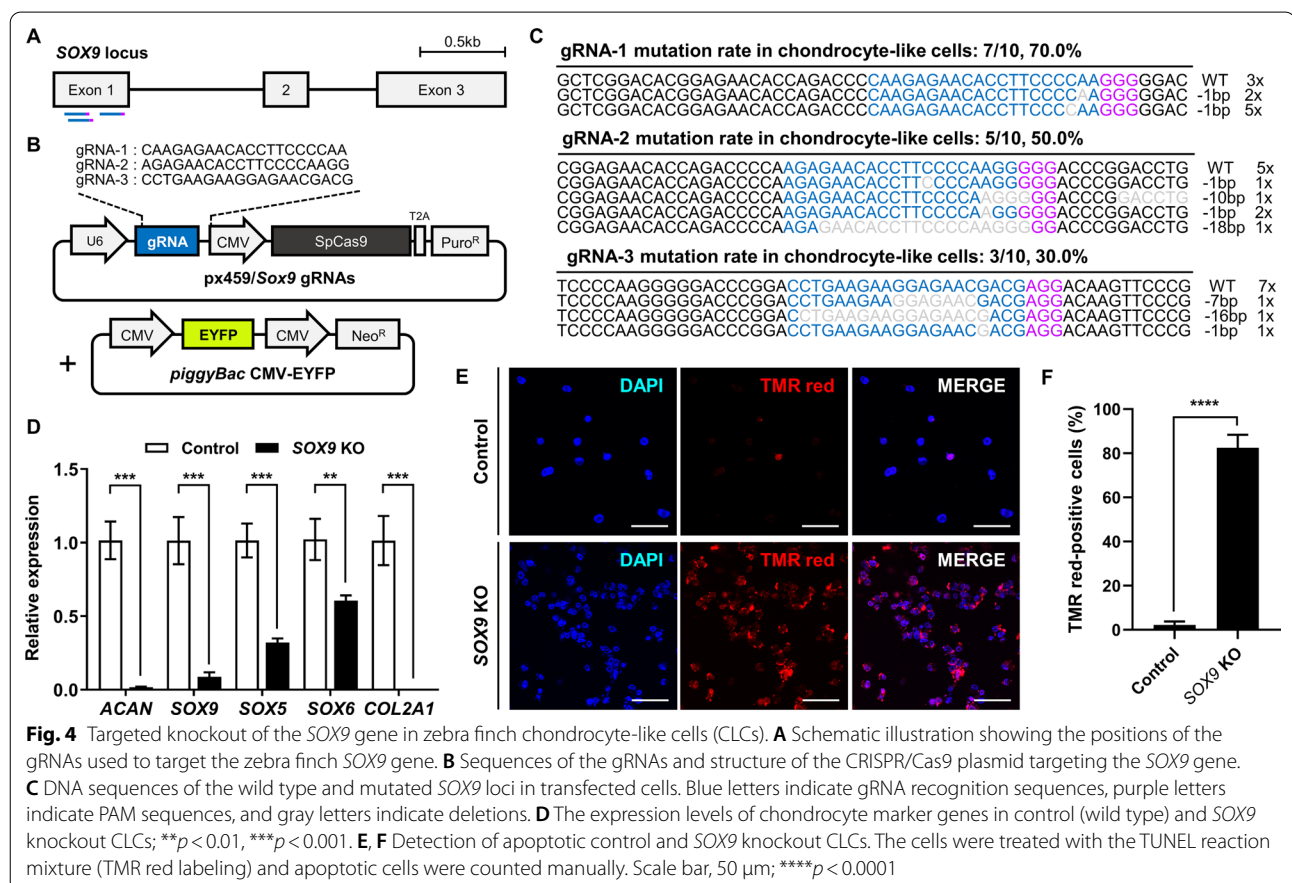
The *SOX9* gene plays an important role in the differentiation of mesenchymal progenitor cells into chondrocytes, and its deficiency causes apoptosis in chondrocytes [22]. Thus, we selected *SOX9* (located on chromosome 18) as the target gene to verify the gene editing potential of the zebra finch immortalized CLCs. Cells were transfected with CRISPR/Cas9 plasmids encoding specific gRNAs targeting exon 1 of the *SOX9* gene (Fig. 4A, B). To enable optimized G418 selection, the cells were also co-transfected with a *piggyBac* plasmid containing a neomycin resistance gene (Fig. 4B). Genomic DNA sequencing analysis confirmed that gRNA sequences 1, 2, and 3 induced nucleotide deletions at the targeted locus in immortalized zebra finch CLCs with efficiencies of 70%, 50%, and 30%, respectively (Fig. 4C). Therefore, we used zebra finch CLCs edited with gRNA-1 for subsequent experiments.

Quantitative RT-PCR analyses of control (wild type) and *SOX9* knockout immortalized zebra finch CLCs revealed decreased expression levels of most chondrocyte-related genes in the knockout cells, including

ACAN, *SOX5*, *SOX6*, and *COL2A1*, as well as *SOX9* (Fig. 4D). This result indicates that *SOX9* deficiency affects the expression of interacting genes in zebra finch CLCs. Furthermore, a TUNEL assay revealed that a high percentage of *SOX9* knockout CLCs were apoptotic ($82.54 \pm 5.86\%$), whereas only a few wild-type CLCs were apoptotic ($2.24 \pm 1.53\%$) (Fig. 4E, F), indicating that *SOX9* is required for the survival of chondrocyte lineage cells in zebra finch, as described previously for other species. These results demonstrate that immortalized zebra finch CLCs have the potential to be used for effective targeted gene editing and gene function analyses.

Discussion

Immortalized cell lines have several advantages over primary cells but are only abundantly developed for major laboratory animals and are still species-limited. Primary cells can be used as an alternative, but senescence occurs quickly in vitro and the transfection efficiency of these cells is low [23, 24]. In addition, the senescence time point during in vitro culture of primary cells is different for each species [3]; in our current study, senescence of primary cultured ZEFs occurred very early (Fig. 1A), making



it difficult to utilize these primary cells for research purposes. Therefore, we established an immortalized zebra finch cell line and characterized its usefulness.

A previous study generated immortalized cells with myoblast characteristics by introducing SV40 T antigen into ZEFs [18]. To expand the approaches for establishing immortalized cell lines in zebra finch, we introduced *c-MYC* into primary cells and generated a stably proliferating immortalized cell line displaying the characteristics of chondrocytes. The proto-oncogene *c-MYC* plays important roles in modulating cell cycle progression, proliferation, growth, self-renewal, differentiation, and apoptosis [21, 25]. In addition, *c-MYC* can extend the lifespan of fibroblasts and induce complete immortalization of normal human epithelial cells by activating telomerase [26]. The immortalized cell line described here went through a selection step, as shown by the inflection point of the growth curve (Fig. 1D), which might be considered a result of increased *c-MYC* expression, as seen for the human *c-MYC*-immortalized fibroblast cell line [20]. In addition, aneuploidy was observed in both the primary zebra finch cells and the immortalized cell line (chromosome 2, 5 in primary cells; chromosome 1, 3, 8 in immortal cells). Zebra finch *c-MYC* is located on chromosome 2, suggesting that overexpression of exogenous *c-MYC* is not directly related to the abnormal karyotype. Natural chromosomal abnormalities occur at a rate of approximately 5% in zebra finch, and these abnormalities cause mortality during embryo development and affect the hatching rate [27]. And the additional karyotyping of several primary cells revealed various chromosomal abnormalities (Additional file 1: Fig. S1). Therefore, we propose that, in the future, karyotyping should be prioritized when establishing a cell line derived from embryonic zebra finch cells.

The immortalized zebra finch cell line developed here showed chondrocyte-like characteristics. In previous studies, mouse and human dermal fibroblasts were transformed into CLCs by the introduction of defined factors such as the reprogramming factors *c-MYC* and *KLF4* and the chondrogenic factor *SOX9* [28, 29]. In addition, porcine CLCs were generated by transduction of *c-MYC* only into porcine embryonic fibroblasts [21]. In our current study, the embryonic tissues sampled for primary culture of fibroblasts consisted of a mixed population of several morphologically and functionally heterogeneous cells; thus the heterogeneity of the primary cells may have influenced the characteristics of the immortalized cell line [8, 30].

The electroporation-mediated transfection efficiency of primary ZEFs has been reported previously as 40%, with a cell viability of less than 50%, and the gene editing efficiency has been reported as up to 30% [31].

The immortalized cell line described here showed an improved lipofection-based transfection efficiency of approximately 50%, with high cell viability. Since immortalized cell lines can be cultured indefinitely, the transfection efficiency could be increased further by antibiotic selection (Fig. 4). Consequently, we were able to target knockout of the *SOX9* gene and thus confirmed the potential application of the immortalized cell line to study cell characteristics and related genes. In addition to its ability to establish stable genetically modified cell lines, the immortalized zebra finch cell line described here could also be used to validate precision genome editing systems such as targeted knock-in or base editing.

In conclusion, this study demonstrates that primary fibroblasts derived from zebra finch embryos can be successfully immortalized by retroviral transduction of *c-MYC* alone; these cells can undergo stable proliferation and achieve higher transfection efficiencies than primary cells. These characteristics support effective gene editing in vitro and will enable the use of the cells for future gene function studies or validation of CRISPR systems. We expect that the approach described here can also be applied to avian species other than zebra finch.

Methods

Experimental animals

All methods were performed in accordance with the ARRIVE (Animal Research: Reporting of In Vivo Experiments) guidelines and were approved by the Institutional Animal Care and Use Committee (IACUC, SNU-210217–5) of Seoul National University.

Primary culture of zebra finch fibroblasts and chondrocyte-like cells

Primary ZEFs were prepared from 6-day-old embryos. Collected tissues were dissociated with 0.05% trypsin-EDTA and resuspended in Dulbecco's Modified Eagle Medium (Hyclone, Logan, UT, USA) containing 10% fetal bovine serum (Hyclone) and $1 \times$ antibiotic-antimycotic (Thermo Fisher Scientific, Waltham, MA, USA). Cells were seeded at a density of 1×10^6 cells per 100 mm dish. When grown to confluent layers, cells were considered to be at population doubling level (PDL) zero and were passaged to calculate the PDL. The PDL test was carried out as described previously [3]. Primary CLCs were cultured as described previously and were used as a positive control in RT-PCR analyses [32].

Retroviral infection and culture of immortalized cells

Retroviral vector particles were produced by the calcium phosphate co-precipitation method, as described previously [33]. Briefly, the retroviral pMXs-*c-MYC* vector (Addgene, Cambridge, MA, USA) containing the mouse

c-MYC gene was introduced into GP293 cells along with the pVSV-G packaging plasmid (Invitrogen, Thermo Fisher Scientific Inc., Carlsbad, CA, USA). Target cells were exposed to retroviruses for 48 h. Transduced cells were maintained in the same growth medium as the primary cells. When grown to confluent layers, cells were considered to be at PDL zero and were passaged to calculate the cumulative PDL.

Senescence analysis

Primary ZEFs and immortalized cell lines were fixed and then stained using the Senescence β -Galactosidase Staining Kit (Cell Signaling Technology, Danvers, MA, USA).

Cell cycle analysis

Cells were treated with 10 $\mu\text{g}/\text{mL}$ RNase A (Invitrogen) for 30 min at 37 °C and 50 $\mu\text{g}/\text{mL}$ propidium iodide (Millipore Sigma, Burlington, MA, USA) for 30 min at 4 °C. The cell cycle status was determined using the FACSCalibur system (BD Biosciences, San Jose, CA, USA) and data were analyzed using FlowJo software (Tree Star, Ashland, OR, USA).

Karyotype analysis

Primary ZEFs and immortalized cell lines were collected and karyotype analysis was performed as described previously [33].

RT-PCR and quantitative RT-PCR

Total RNA samples were isolated with Trizol (Invitrogen) and cDNA was synthesized using the Superscript III First-Strand Synthesis System (Invitrogen). RT-PCR was done using specific primers with conditions as follows: 95 °C for 5 min, followed by 35 cycles at 95 °C for 30 s, 60 °C for 30 s, and 72 °C for 1 min. Gene expression levels were measured using EvaGreen dye (Biotium, Hayward, CA, USA) and a CFX96 Real-Time PCR Detection System (Bio-Rad, Hercules, CA, USA). All samples were normalized to internal controls and fold changes were calculated through relative quantification ($2^{-\Delta\Delta C_t}$). Primer set information is listed in Additional file 2: Table S1.

Alcian blue staining

Primary ZEFs and immortalized cell lines were stained with 1% Alcian blue (Millipore Sigma) in 3% glacial acetic acid solution and were visualized under a fluorescence microscope.

Transfection and selection of primary and immortalized cells

Primary ZEFs and immortalized cell lines were transfected in serum-free medium with 1–2 μg of a *piggyBac*

YFP-expressing vector and 1–2 μg of a transposase vector (CAGG PBase) using Lipofectamine 3000 reagent (Invitrogen). The transfection mixture was replaced with growth media 6 h after transfection. After culture for 2 more days, fluorescence levels were calculated using the FACSCalibur system and cell viability was measured by trypan blue staining (Millipore Sigma). To determine the most appropriate concentration for the selection of transfected cells, immortalized cells were treated with G418 at 0, 50, 100, 200, 300, 400, or 500 $\mu\text{g}/\text{mL}$, and the surviving cells were counted 1 week after treatment. Subsequently, transfected cells were treated with the selected concentration of G418 (300 $\mu\text{g}/\text{mL}$) for 1 week and the proportion of YFP-expressing cells was determined using the FACSCalibur system.

Gene targeting vector construction

Previously described all-in-one CRISPR/Cas9 plasmids [34] were used to target the zebra finch *SOX9* gene. Guide RNA (gRNA) sequences targeting the gene were designed using Geneious Prime software, considering the on-target score. For insertion of gRNAs into the CRISPR/Cas9 plasmids (pX459), sense and antisense oligonucleotides were designed (Additional file 3: Table S2) and synthesized by Bionics (Seoul, South Korea). Annealing of sense and antisense oligonucleotides was carried out under the following thermocycling conditions: 95 °C for 30 s, 72 °C for 2 min, 37 °C for 2 min, and 25 °C for 2 min. The annealed oligonucleotides were ligated into the pX459 vector using the Golden Gate assembly method, and the constructed CRISPR/Cas9 vectors were validated by Sanger sequencing (Bionics).

Transfection and genomic DNA sequencing analysis of the immortalized cell line

To validate the mutation efficiencies of the gRNAs, CRISPR/Cas9 plasmids containing gRNAs (2 μg) and the *piggyBac* YFP-expressing vector were co-introduced into cells using Lipofectamine 3000 reagent (Invitrogen), and then G418 selection was performed for 1 week. Genomic DNA was extracted from transfected cells and regions encompassing the CRISPR/Cas9 target sites were amplified using specific primer sets (Additional file 3: Table S2). For sequencing analysis, the PCR amplicons were annealed into the pGEM-T Easy vector and analyzed by Sanger sequencing. The sequencing results were analyzed using Geneious Prime software.

TUNEL assay

Apoptotic cells were detected by a TUNEL assay using a TMR red in situ cell death detection kit (Roche, Basel, Switzerland), following the manufacturer's instructions.

Statistical analysis

Comparisons of primary and immortal cells were done via Student's t-tests using GraphPad Prism software (GraphPad Software, La Jolla, CA, USA).

Supplementary Information

The online version contains supplementary material available at <https://doi.org/10.1186/s12983-022-00464-x>.

Additional file 1. Figure S1. Karyotyping analysis of zebra finch primary fibroblast cells. The karyotypes of zebra finch primary fibroblast cells (passage 1) from four different embryos were analyzed. The number of karyotyped cells for each line was 20, and all karyotyped cells displayed the same karyotype.

Additional file 2. Table S1. Primer sequences used for RT-PCR and quantitative RT-PCR.

Additional file 3. Table S2. Oligonucleotide sequences used for genome editing.

Acknowledgements

Not applicable.

Author contributions

KMJ contributed in the experiment design, data acquisition, analysis and interpretation of data, have drafted the work and substantively revised it. YMK contributed in the conception, revision of the manuscript. EY carried out experimnts. JYH contributed in the conception, overall coordination. All authors read and approved the final manuscript.

Funding

This work was supported by a National Research Foundation of Korea (NRF) Grant funded by the Korea Government (MSIP) [No. NRF-2015R1A3A2033826].

Availability of data and materials

The datasets generated during and/or analyzed during the current study can be found in the figures, tables, and supplementary information or are available upon request.

Declarations

Ethics approval and consent to participate

Not applicable.

Consent for publication

Not applicable.

Competing interests

The authors declare that they have no competing interests.

Received: 21 December 2021 Accepted: 3 June 2022

Published online: 11 June 2022

References

- Kaur G, Dufour JM. Cell lines. *Spermatogenesis*. 2012;2:1–5.
- Kirchhoff C, Araki Y, Huhtaniemi I, Matusik RJ, Osterhoff C, Poutanen M, Samalecos A, Sipila P, Suzuki K, Orgebin-Crist MC. Immortalization by large T-antigen of the adult epididymal duct epithelium. *Mol Cell Endocrinol*. 2004;216:83–94.
- Katayama M, Kiyono T, Ohmaki H, Eitsuka T, Endoh D, Inoue-Murayama M, Nakajima N, Onuma M, Fukuda T. Extended proliferation of chicken- and Okinawa rail-derived fibroblasts by expression of cell cycle regulators. *J Cell Physiol*. 2019;234:6709–20.
- Vazquez-Lombardi R, Nevoltris D, Luthra A, Schofield P, Zimmermann C, Christ D. Transient expression of human antibodies in mammalian cells. *Nat Protoc*. 2018;13:99–117.
- Marino-Puertas L, Del Amo-Maestro L, Taules M, Gomis-Ruth FX, Goulas T. Recombinant production of human alpha2-macroglobulin variants and interaction studies with recombinant G-related alpha2-macroglobulin binding protein and latent transforming growth factor-beta2. *Sci Rep*. 2019;9:9186.
- Himly M, Foster DN, Bottoli I, Iacovoni JS, Vogt P. The DF-1 chicken fibroblast cell line: transformation induced by diverse oncogenes and cell death resulting from infection by avian leukosis viruses. *Virology*. 1998;248:295–304.
- Lee J, Foster DN, Bottje WG, Jang HM, Chandra YG, Gentles LE, Kong BW. Establishment of an immortal chicken embryo liver-derived cell line. *Poult Sci*. 2013;92:1604–12.
- Antin PB, Ordahl CP. Isolation and characterization of an avian myogenic cell line. *Dev Biol*. 1991;143:111–21.
- Baba TW, Giroir BP, Humphries EH. Cell lines derived from avian lymphomas exhibit two distinct phenotypes. *Virology*. 1985;144:139–51.
- Mello CV. The zebra finch, *Taeniopygia guttata*: an avian model for investigating the neurobiological basis of vocal learning. *Cold Spring Harb Protoc*. 2014;2014:1237–42.
- Haesler S, Rochefort C, Georgi B, Licznernski P, Osten P, Scharff C. Incomplete and inaccurate vocal imitation after knockdown of FoxP2 in songbird basal ganglia nucleus Area X. *PLoS Biol*. 2007;5: e321.
- Heston JB, White SA. Behavior-linked FoxP2 regulation enables zebra finch vocal learning. *J Neurosci*. 2015;35:2885–94.
- Ahmadiantehrani S, London SE. A reliable and flexible gene manipulation strategy in posthatch zebra finch brain. *Sci Rep*. 2017;7:43244.
- Norton P, Barschke P, Scharff C, Mendoza E. Differential song deficits after lentivirus-mediated knockdown of FoxP1, FoxP2, or FoxP4 in area X of juvenile zebra finches. *J Neurosci*. 2019;39:9782–96.
- Liu WC, Kohn J, Szwed SK, Pariser E, Sepe S, Haripal B, Oshimori N, Marsala M, Miyanojara A, Lee R. Human mutant huntingtin disrupts vocal learning in transgenic songbirds. *Nat Neurosci*. 2015;18:1617–22.
- Abe K, Matsui S, Watanabe D. Transgenic songbirds with suppressed or enhanced activity of CREB transcription factor. *Proc Natl Acad Sci U S A*. 2015;112:7599–604.
- Itoh Y, Arnold AP. Zebra finch cell lines from naturally occurring tumors. *In Vitro Cell Dev Biol Anim*. 2011;47:280–2.
- Biegler MT, Fedrigo O, Collier P, Mountcastle J, Haase B, Tilgner HU, Jarvis ED. Induction of an immortalized songbird cell line allows for gene characterization and knockout by CRISPR-Cas9. *Sci Rep*. 2022;12:4369.
- Kitani H, Sakuma C, Takenouchi T, Sato M, Yoshioka M, Yamanaka N. Establishment of c-myc-immortalized Kupffer cell line from a C57BL/6 mouse strain. *Results Immunol*. 2014;4:68–74.
- Benanti JA, Wang ML, Myers HE, Robinson KL, Grandori C, Galloway DA. Epigenetic down-regulation of ARF expression is a selection step in immortalization of human fibroblasts by c-Myc. *Mol Cancer Res*. 2007;5:1181–9.
- Shi JW, Zhang TT, Liu W, Yang J, Lin XL, Jia JS, Shen HF, Wang SC, Li J, Zhao WT, et al. Direct conversion of pig fibroblasts to chondrocyte-like cells by c-Myc. *Cell Death Discov*. 2019;5:55.
- Ikegami D, Akiyama H, Suzuki A, Nakamura T, Nakano T, Yoshikawa H, Tsumaki N. Sox9 sustains chondrocyte survival and hypertrophy in part through Pik3ca-Akt pathways. *Development*. 2011;138:1507–19.
- Hamm A, Krott N, Breibach I, Blindt R, Bosserhoff AK. Efficient transfection method for primary cells. *Tissue Eng*. 2002;8:235–45.
- Wang Y, Chen S, Yan Z, Pei M. A prospect of cell immortalization combined with matrix microenvironmental optimization strategy for tissue engineering and regeneration. *Cell Biosci*. 2019;9:7.
- Schmeer C, Kretz A, Wengerodt D, Stojilkovic M, Witte OW. Dissecting aging and senescence—current concepts and open lessons. *Cells*. 2019;8:1446.
- Wang J, Xie LY, Allan S, Beach D, Hannon GJ. Myc activates telomerase. *Genes Dev*. 1998;12:1769–74.
- Forstmeier W, Ellegren H. Trisomy and triploidy are sources of embryo mortality in the zebra finch. *Proc Biol Sci*. 2010;277:2655–60.
- Outani H, Okada M, Yamashita A, Nakagawa K, Yoshikawa H, Tsumaki N. Direct induction of chondrogenic cells from human dermal fibroblast culture by defined factors. *PLoS ONE*. 2013;8:e77365.

29. Hiramatsu K, Sasagawa S, Outani H, Nakagawa K, Yoshikawa H, Tsumaki N. Generation of hyaline cartilaginous tissue from mouse adult dermal fibroblast culture by defined factors. *J Clin Investig*. 2011;121:640–57.
30. Griffin MF, desJardins-Park HE, Mascharak S, Borrelli MR, Longaker MT. Understanding the impact of fibroblast heterogeneity on skin fibrosis. *Dis Model Mech*. 2020;13:044164.
31. Jung KM, Kim YM, Kim JL, Han JY. Efficient gene transfer into zebra finch germline-competent stem cells using an adenoviral vector system. *Sci Rep*. 2021;11:14746.
32. Li L, Ma Y, Li X, Li X, Bai C, Ji M, Zhang S, Guan W, Li J. Isolation, culture, and characterization of chicken cartilage stem/progenitor cells. *Biomed Res Int*. 2015;2015: 586290.
33. Kim YM, Park YH, Lim JM, Jung H, Han JY. Technical note: induction of pluripotent stem cell-like cells from chicken feather follicle cells. *J Anim Sci*. 2017;95:3479–86.
34. Lee HJ, Yoon JW, Jung KM, Kim YM, Park JS, Lee KY, Park KJ, Hwang YS, Park YH, Rengaraj D, Han JY. Targeted gene insertion into Z chromosome of chicken primordial germ cells for avian sexing model development. *FASEB J*. 2019;33:8519–29.

Publisher's Note

Springer Nature remains neutral with regard to jurisdictional claims in published maps and institutional affiliations.

Ready to submit your research? Choose BMC and benefit from:

- fast, convenient online submission
- thorough peer review by experienced researchers in your field
- rapid publication on acceptance
- support for research data, including large and complex data types
- gold Open Access which fosters wider collaboration and increased citations
- maximum visibility for your research: over 100M website views per year

At BMC, research is always in progress.

Learn more biomedcentral.com/submissions

