

RESEARCH

Open Access



# A retrospective study of survival and risk factors for mortality among people living with HIV who received antiretroviral treatment in a resource-limited setting

Weerawat Manosuthi<sup>1\*</sup>, Lantharita Charoenpong<sup>1</sup> and Chalor Santiwarangkana<sup>2</sup>

## Abstract

**Background:** The availability and accessibility of effective antiretroviral therapy (ART) for people living with HIV (PLWH) has substantially improved in the past two decades in resource-limited settings. Therefore, evaluation of survival is needed in the current setting.

**Method:** We retrospectively analyzed secondary data of the national AIDS program database from national health security region number 4 among PLWH who were ART-naïve between January 2014 and December 2018. All PLWH were followed until December 2019 to evaluate their survival status and possible risk factors related to death.

**Results:** A total of 42,229 PLWH were identified, of which 14,053 were ART-naïve and thus enrolled in the study. Sixty-seven percent were male, the mean  $\pm$  SD age was  $35 \pm 12$  years, and the median (IQR) baseline CD4 count was 162 (44–353) cells/mm<sup>3</sup>. Regarding medical care benefits, 46% had a universal health coverage scheme, 34% had a national social security scheme, and 2% had a civil servants medical benefit scheme. A total of 2142 (15%) mortalities occurred during the total follow-up period of 28,254 patient-years. The mortality rate was 7.5 (95% CI 7.2–7.9) per 100 person-years. Survival rates at 1, 2, 3, 4 and 5 years after HIV registration were 88.2% (95% CI 87.6–88.7%), 85.3% (95% CI 84.6–85.9%), 82.9% (95% CI 81.9–83.4%), 81.3% (95% CI 80.5–82.0%) and 75.1% (95% CI 73.5–76.8%), respectively. The Cox proportional hazards model showed that all-cause mortality was associated with a history of ART switching (HR = 7.06, 95% CI 4.53–11.00), major opportunistic infections during ART (HR = 1.93, 95% CI 1.35–2.77), baseline CD4 count  $\leq 200$  vs.  $> 500$  cells/mm<sup>3</sup> (HR = 4.00, 95% CI 1.45–11.11), age  $\geq 50$  vs.  $< 30$  years (HR = 1.77, 95% CI 1.12–2.78), and receiving nevirapine-based regimens (HR = 1.43, 95% CI 1.04–1.97).

**Conclusions:** This study demonstrated the substantial mortality rate over the consecutive 5 years of the follow-up period among PLWH who received ART in a resource-limited setting. Early case finding and prompt initiation of ART as well as continuous HIV care are a cornerstone to improve survival.

**Keywords:** HIV, Survival, Thailand

## Introduction

Currently, there is an estimated 37.7 million people living with HIV (PLWH) globally [1]. In Thailand, there is an estimated 500,000 PLWH, and 12,000 people died of AIDS-related illnesses in 2020. As such, Thailand is considered to be one of the countries with a high HIV burden

\*Correspondence: drweerawat@hotmail.com

<sup>1</sup> Present Address: Bamrasnaradura Infectious Diseases Institute, Department of Diseases Control, Ministry of Public Health, Nonthaburi 11000, Thailand

Full list of author information is available at the end of the article



© The Author(s) 2021. **Open Access** This article is licensed under a Creative Commons Attribution 4.0 International License, which permits use, sharing, adaptation, distribution and reproduction in any medium or format, as long as you give appropriate credit to the original author(s) and the source, provide a link to the Creative Commons licence, and indicate if changes were made. The images or other third party material in this article are included in the article's Creative Commons licence, unless indicated otherwise in a credit line to the material. If material is not included in the article's Creative Commons licence and your intended use is not permitted by statutory regulation or exceeds the permitted use, you will need to obtain permission directly from the copyright holder. To view a copy of this licence, visit <http://creativecommons.org/licenses/by/4.0/>. The Creative Commons Public Domain Dedication waiver (<http://creativecommons.org/publicdomain/zero/1.0/>) applies to the data made available in this article, unless otherwise stated in a credit line to the data.

in Asia and the Pacific regions, accounting for 9% of the region's total number of PLWH [1]. The national strategy to end AIDS during 2017–2030 has set the targets of reducing new cases of HIV to below 1000 cases per year, reducing AIDS mortality to no greater than 4000 cases per year, and decreasing HIV stigma and discrimination by 90% [2]. In 2020, Joint United Nations Programme on HIV/AIDS (UNAIDS)' 90–90–90 targets in Thailand were 94% of PLWH diagnosed and knew their status, 83% received ART, and of those on treatment, 97% were virologically suppressed [1]. HIV suppression rates among PLWH have increased significantly, up to 77% in 2020, compared to only 53% in 2015 [3].

Access to ART in Thailand has continuously increased, resulting in enormous progress with virus suppression to achieve the third 90 target of UNAIDS in recent years, and the estimated number of AIDS-related deaths has gradually declined, but it is still more than 10,000 cases per year [2]. Studies on mortality and risk factors for PLWH in Thailand are lacking. In addition, real-world data regarding long-term survival and associated factors are needed to inform clinical care, guide policy, and help evaluate program effectiveness. Therefore, this study aimed to investigate the survival rate and possible risk factors related to death among PLWH in whom ART use is implemented nationwide.

## Materials and methods

A retrospective data review study was conducted among PLWH who were registered in the national AIDS program database at national health security office region 4, which comprised eight provinces, including the Nonthaburi, Lopburi, Singburi, Saraburi, Ayutthaya, Angthong, Nakhonnayok, and Pathumthani provinces. All 12 health districts in the country are responsible for the approximately 3–6 million people living in the provinces of each health district [4]. The study was reviewed and approved by the institutional review board of Bamrasnaradura Infectious Diseases Institute (S021 h/62). The institution's institutional review board waived the requirement to obtain informed consent. The confidentiality and privacy of the information were assured by removing the identity of the individual PLWH and replacing it with a new anonymous code given by the national health security office. The inclusion criteria of the study were as follows: (1) PLWH > 15 years of age, (2) registered in the national HIV program database region 4, (3) antiretroviral-naive treatment, and (4) initiated ART between January 2014 and December 2018. The exclusion criteria were as follows: (1) no data available after registration, and (2) no follow-up visit after registration. All patients were followed up for vital status until December 2019. Each PLWH was classified into the

following two groups based on their vital status during the follow-up period: (1) surviving group, and (2) non-surviving group.

The primary outcome of interest was time from HIV registration in the database to death, which was calculated by subtracting the date of death from the date on which the patient was registered. The patients were censored at the date of the last visit if they were lost to follow-up or censored at the date of referral. The patients' vital status in this national HIV database was checked to differentiate between those who lost to follow-up and those who had died. The secondary objectives were to determine the possible risk factors related to death. Possible risk factors along with other data collected were studied. These included patients' demographics, i.e., sex measured as male or female, baseline CD4 cell count upon registration, history of major opportunistic infections (OIs) prior registration measured as yes or no, major OIs during the follow-up period measured as yes or no, major opportunistic infection was classified according to WHO clinical stage IV [5], medical care benefit was classified as universal coverage (UC) or social security scheme (SS) or civil servant medical benefit scheme (CSMBS), ART regimen as measure as efavirenz-containing or nevirapine-containing or lopinavir/ritonavir-containing, time to achieving undetectable HIV-RNA viral load from registration, history of ART switching due to any reason measured as yes or no, and time since HIV registration in the database to start ART. Data cleaning and analysis were delegated to the Medical Research Network of the Consortium of Thai Medical Schools (MedResNet). The report of the present study followed the strengthening of the reporting of studies conducted using observational, routinely collected data (RECORD) guidelines, which is a reporting guideline for studies conducted using routinely collected health data, such as health administrative data, electronic medical record data, primary care surveillance data, and disease registries [6].

## Statistical analysis

The mean  $\pm$  standard deviation (SD) used when the numerical data were normally distributed while the median (interquartile range 25th and 75th, IQR) was used when skewed and frequencies (%) are used to describe PLWH characteristics in each group. The chi-squared test and Mann–Whitney *U* test were used to compare categorical and continuous variables between the two groups, respectively. The Kaplan–Meier method was used to estimate the overall survival and the median time to death after HIV registration in the national HIV program database. The log-rank test was used to compare the median time to death among groups. The present study applied Cox regression for all explanatory

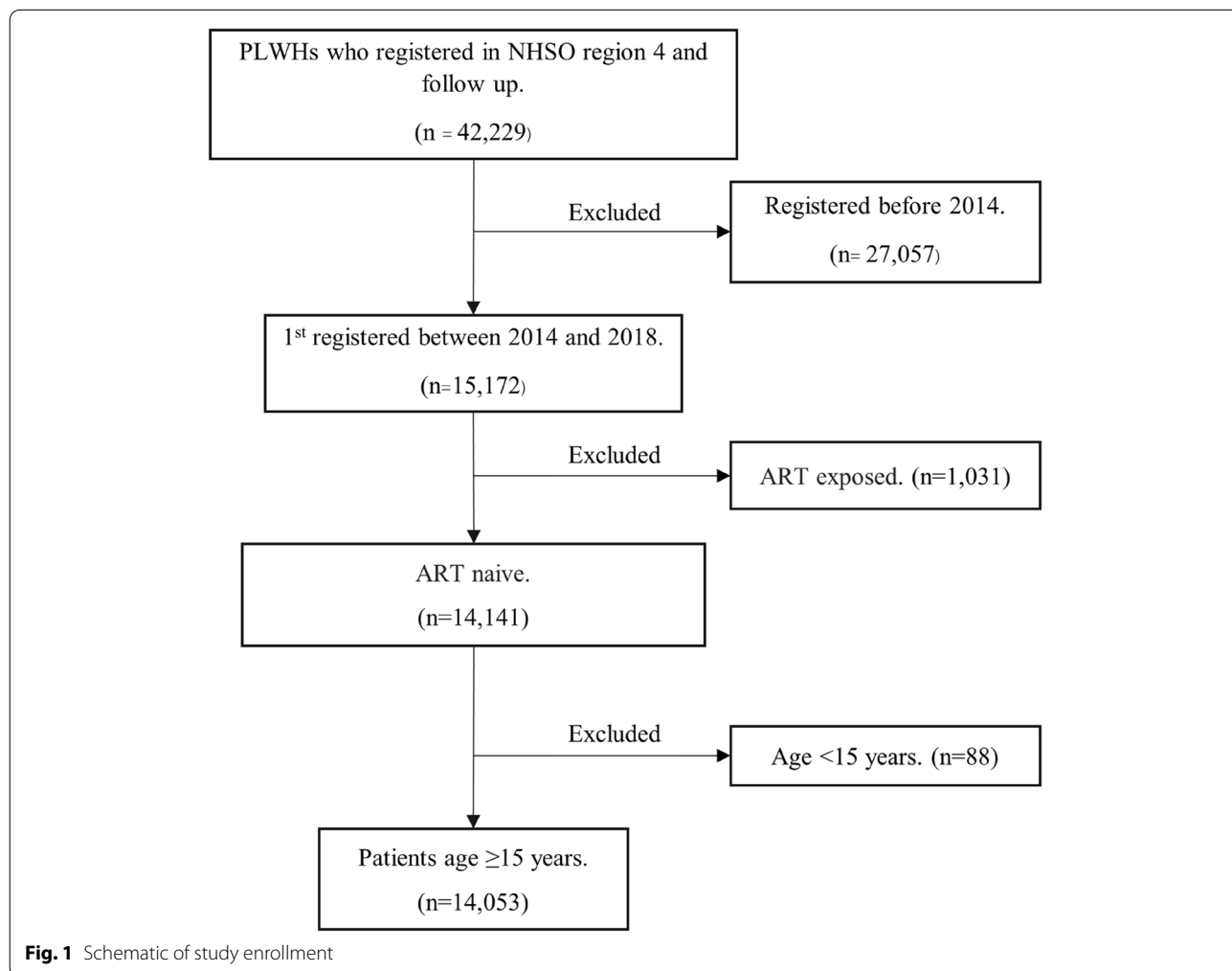
factors effecting and adjusted all factors affected on the survival rate. Cox proportional hazards model was used to determine the chance of death after HIV registration by adjusting for confounding factors, such as sex, previous OIs, baseline CD4 cell count, medical care benefit upon national AIDS program database registration, history of ART switching due to any reason and initial ART regimen. The hazard ratio (HR) and its 95% confidence interval (CI) were estimated. All analyses were performed using STATA version 15.1 (College Station, Texas 77845, USA). A *p* value less than 0.05 was considered statistically significant.

**Results**

Based upon data from the national AIDS program database, a total of 42,229 PLWH were identified of which 14,053 were ART naive and enrolled in the study. Figure 1 shows the schematic of study enrollment. The median (IQR) time of the follow-up period was 1.76 (0.66–3.23) years. The characteristics of PLWH were described and

compared between the two study groups, as shown in Table 1. Of 14,053 PLWH, 67% were male, and the mean ± SD age was 35 ± 12 years. In terms of medical care benefits, 64%, 34%, and 2% of PLWH were covered under a universal health coverage scheme, a national social security scheme, and a civil servants medical benefit scheme, respectively. The overall median (IQR) baseline CD4 count was 162 (44–353) cells/mm<sup>3</sup>. The patients in the nonsurviving group had a higher proportion of older age, history of OIs before HIV registration, OIs during the follow-up period, received nevirapine-based ART regimen, lower baseline CD4 cell count, switching ART regimen during follow-up period than the patients in the surviving group (*p* < 0.05).

A total of 11,911 (85%) PLWH were alive during the follow-up period, and 2142 (15%) mortalities occurred in a total follow-up period of 28,254 patient-years. The mortality rate accounted for 7.5 (95% CI 7.2–7.9) per 100 person-years. The probability of survival after HIV registration estimated by the Kaplan–Meier method



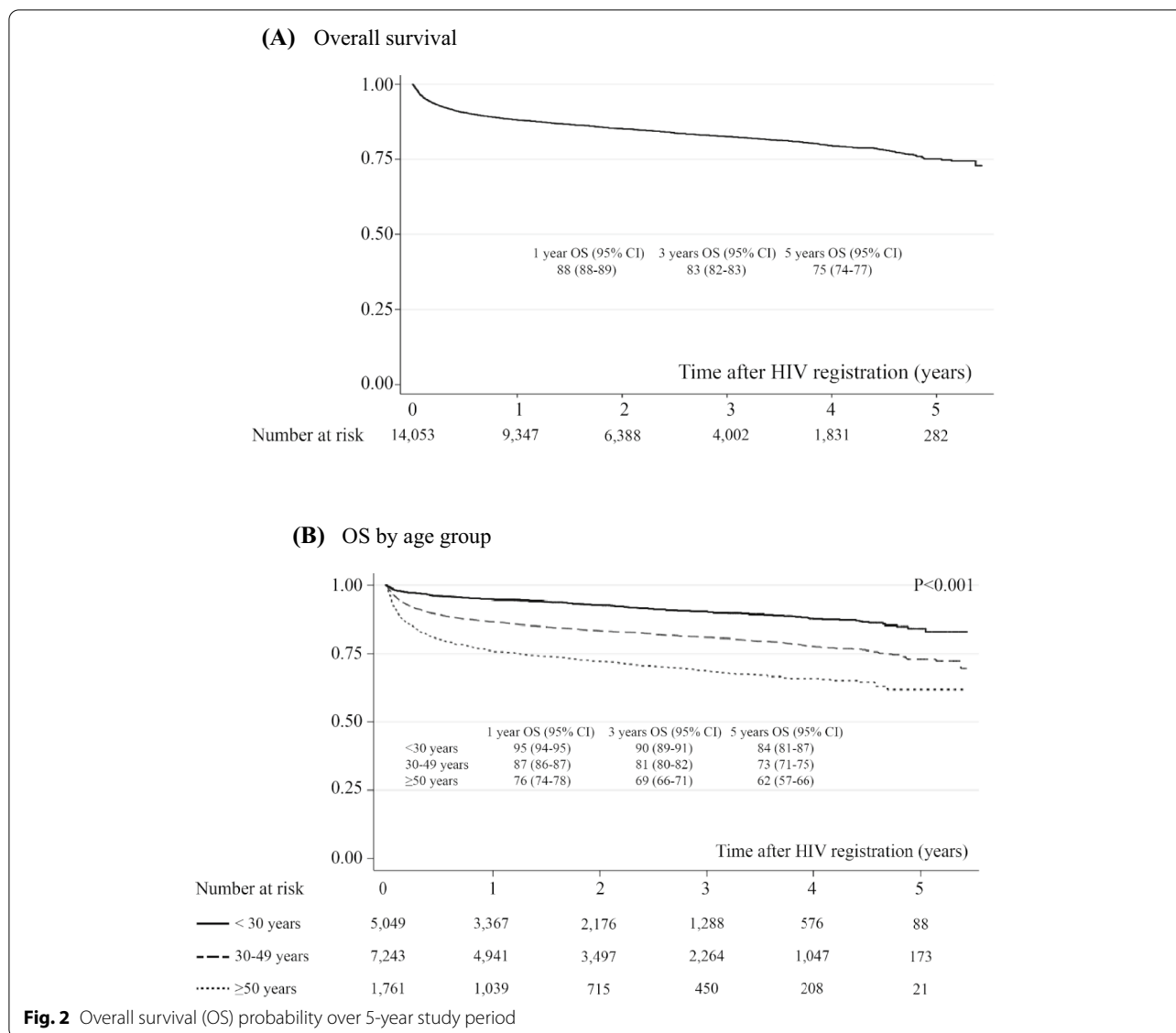
**Fig. 1** Schematic of study enrollment

**Table 1** Baseline demographic data between the two groups

Factors	Surviving group n = 11,911 Number (%)	Nonsurviving group n = 2142 Number (%)	Total n = 14,053 Number (%)	p value
Sex				0.385
Male	8060 (67.7%)	1429 (66.7%)	9489 (67.5%)	
Female	3851 (32.3%)	713 (33.3%)	4564 (32.5%)	
Age range, years				< 0.001
< 30	4671 (39.2%)	378 (17.6%)	5049 (35.9%)	
30–49	5976 (50.2%)	1267 (59.2%)	7243 (51.5%)	
≥ 50	1264 (10.6%)	497 (23.2%)	1761 (12.5%)	
Mean ± SD	34 ± 11	41 ± 12	35 ± 12	
Medical benefit schemes				< 0.001
UC	7321 (62.1%)	1543 (72.8%)	8864 (63.7%)	
SS	4199 (35.6%)	540 (25.5%)	4739 (34.1%)	
CSMBS	271 (2.3%)	36 (1.7%)	307 (2.2%)	
Total	11,791 (100%)	2119 (100%)	13,910 (100%)	
History of previous OIs prior to ART				< 0.001
No	10,957 (92.0%)	1801 (84.1%)	12,758 (90.8%)	
Yes	954 (8.0%)	341 (15.9%)	1295 (9.2%)	
OIs during ART				< 0.001
No	10,995 (92.3%)	1870 (87.3%)	12,865 (91.5%)	
Yes	916 (7.7%)	272 (12.7%)	1188 (8.5%)	
ART regimens				< 0.001
Efavirenz-containing	7438 (82.6%)	713 (76.9%)	8151 (82.1%)	
Nevirapine-containing	1238 (13.7%)	197 (21.3%)	1435 (14.4%)	
Lopinavir/ritonavir-containing	328 (3.6%)	17 (1.8%)	345 (3.5%)	
Total	9004 (100.0%)	927 (100.0%)	9931 (100.0%)	
Baseline CD4 count, cells/mm <sup>3</sup>				< 0.001
≤ 200	3514 (52.1%)	690 (80.5%)	4204 (55.3%)	
201–500	2385 (35.4%)	135 (15.7%)	2520 (33.2%)	
> 500	846 (12.5%)	32 (11.6%)	878 (11.5)	
Total	6745 (100%)	857 (100.0%)	7602 (100.0%)	
Median (IQR25th–75th)	186 (51–367)	50 (19–145)	162 (44–353)	
Time since registration to start ART, years				0.305
Median (IQR25th–75th)	0.06 (0.02–0.13)	0.08 (0.04–0.16)	0.06 (0.02–0.13)	
ART switch during follow-up period				< 0.001
No	6027 (64.4%)	34 (14.2%)	6061 (63.1%)	
Yes	3332 (35.6%)	206 (85.8%)	3538 (36.9%)	
Total	9359 (100.0%)	240 (100.0%)	9599 (100.0%)	
Reasons to switch ART				0.049
Complication	1733 (52.0%)	98 (47.6%)	1831 (51.8%)	
Treatment failure	214 (6.4%)	22 (10.7%)	236 (6.7%)	
Data not available	1385 (41.6%)	86 (41.7%)	1471 (41.6%)	
Total	3332 (100.0%)	206 (100.0%)	3538 (100.0%)	
Time to plasma HIV viral load < 40 copies/mL, years				0.811
Mean ± SD	1.4 ± 0.5	1.4 ± 0.6	1.4 ± 0.5	

is shown in Fig. 2. Overall survival rates at 1, 2, 3, 4 and 5 years after HIV registration were 88.2% (95% CI 87.6–88.7%), 85.3% (95% CI 84.6–85.9%), 82.9%

(95% CI 81.9–83.4%), 81.3% (95% CI 80.5–82.0%) and 75.1% (95% CI 73.5–76.8%), respectively. Forest plots of factors associated with the risk of death are shown

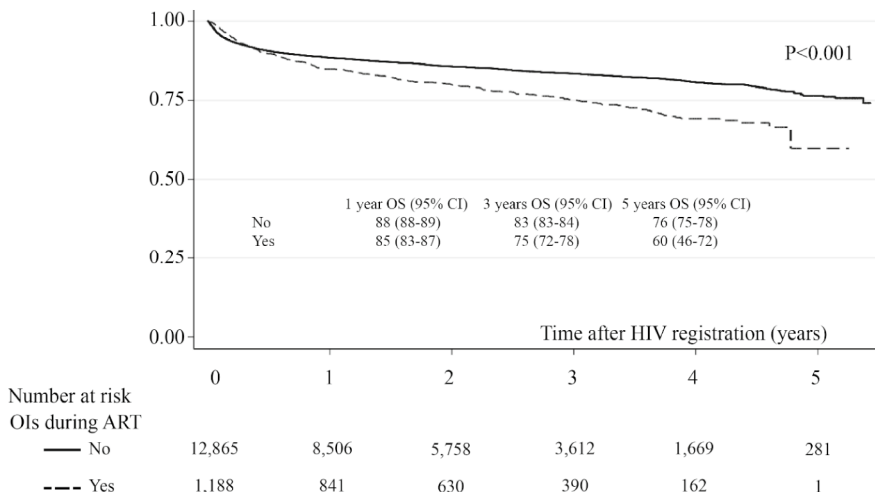


in Fig. 3. The Cox proportional hazards model showed that all-cause mortality was associated with a history of ART switching (HR=7.06, 95% CI 4.53–11.00), major opportunistic infections during ART (HR=1.93, 95% CI 1.35–2.77), baseline CD4 count ≤200 vs. >500 cells/mm<sup>3</sup> (HR=4.00, 95% CI 1.45–11.11), age ≥50 vs. <30 years (HR=1.77, 95%CI 1.12–2.78), and receiving nevirapine-based regimens (HR=1.43, 95% CI 1.04–1.97). Figure 2 showed survival probability over 5-year study period of all patients (Fig. 2A) and were stratified by significant factors (Fig. 2B–F). The other factors were not associated with all-cause mortality. The most frequent reasons for ART switching included ART-related complications (52%).

**Discussion**

This study estimated the survival rate of PLWH at a recent period of time and related risk factors associated with death based on the national AIDS program database. The overall survival rate is relatively low when compared to our previous report that was conducted over a decade ago in a tertiary HIV referral center among patients coinfecting with HIV and TB [7]. In contrast, several studies in Europe and America have reported substantially reduced mortality rates after the introduction of highly effective combined ART [8–14]. However, the magnitude of the decrease in mortality rate in these continents was higher than that in resource-limited countries and even changed sooner [15–17]. This finding may

**(C) OS by major opportunistic infections (OIs) during ART**



**(D) OS by ART regimens**

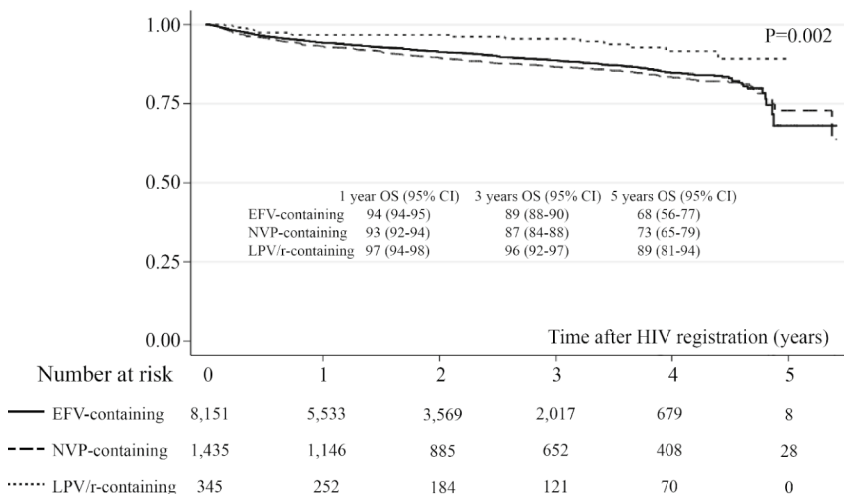


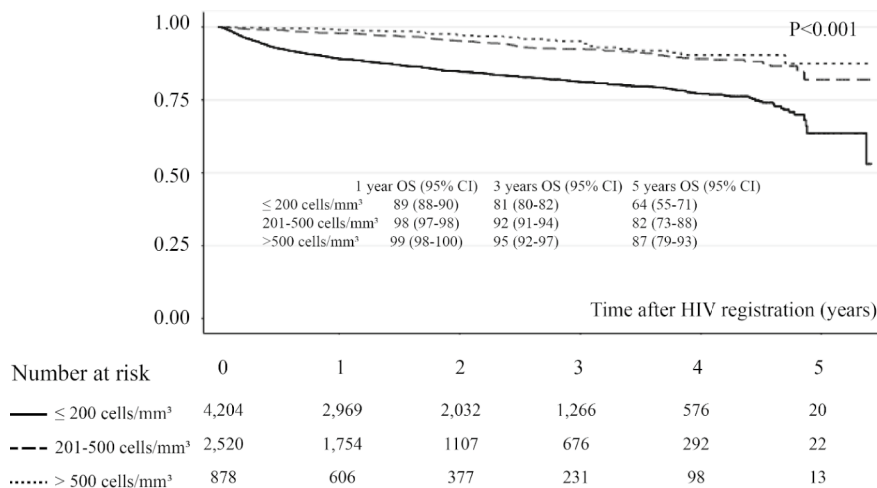
Fig. 2 continued

be explained by the majority of PLWH presenting relatively late with very low CD4 cell counts. Approximately 40% of all PLWH presented with CD4 counts <math>< 100</math> cells/mm<sup>3</sup> and 90% presented with CD4 counts <math>< 500</math> cells/mm<sup>3</sup>. Although HIV prevalence is significantly declining in Thailand due to successful HIV prevention programs, with the rate decreasing by approximately 60% between 2010 and 2018 [1], early identification of all PLWH and prompt initiation of ART in these individuals are essential for diligent HIV care [18, 19], which could lead to dramatic reductions in the death rate. Delays in linkage to medical care are associated with a greater likelihood of progression of the disease by immunologic deterioration.

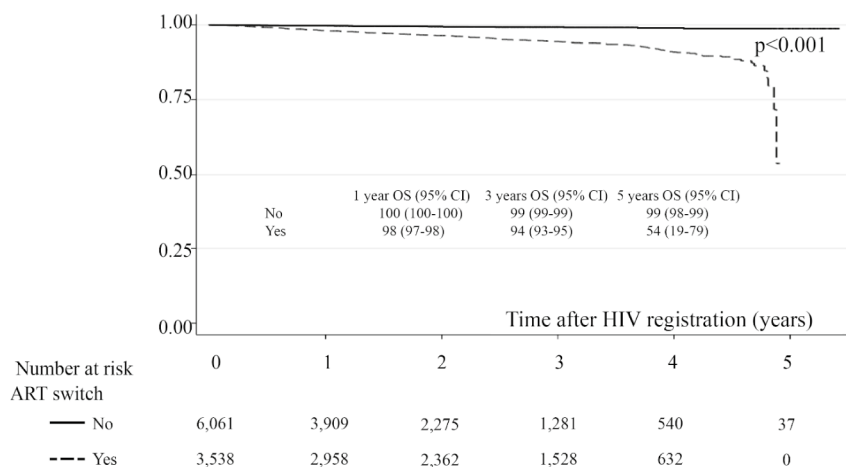
Our findings suggest that additional research and interventions on best practices for HIV testing and linkage to care is important. Such multifaceted approach to the problem of linkage to care remains vital.

The WHO estimated that of the 40 million people living with HIV/AIDS in the world, approximately 2.8 million are 50 years and older [20]. The present study demonstrated that elderly PLWH were 1.8 times more likely to die than younger PLWH. There are many challenges for the management of aging PLWH. These include chronic comorbidities, such as cardiovascular disease, osteoporosis and fractures, renal disease, chronic neurological disease, malignancies, liver disease, and metabolic

**(E) OS by baseline CD4 cell count stratum**



**(F) OS by history of ART switch during follow-up period**

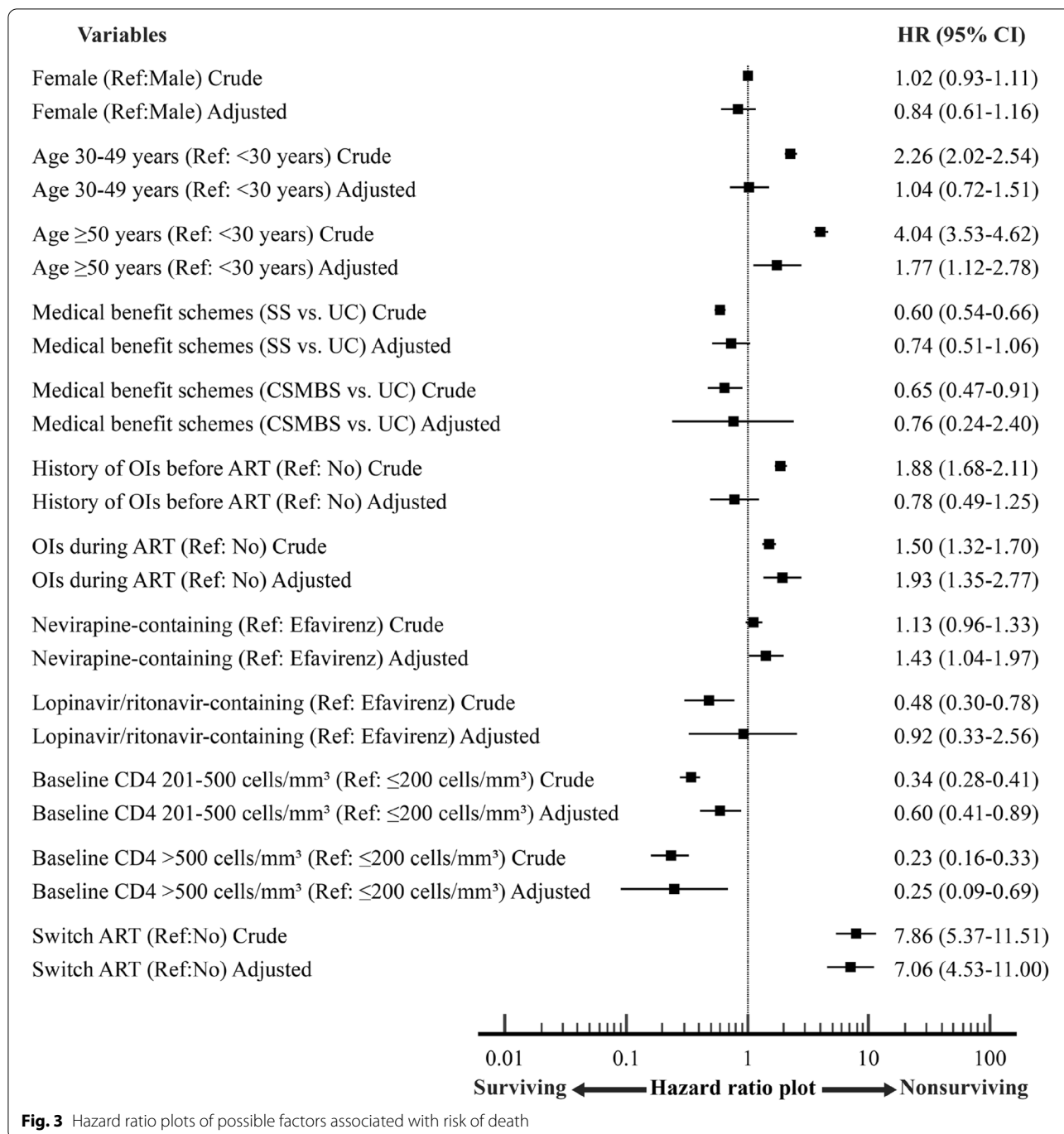


**Fig. 2** continued

syndrome, as well as geriatric syndromes and frailty [21–28]. In addition, elderly PLWH are more likely to experience lower status disclosure, social isolation, depression, and adverse clinical outcomes. The principles developed in geriatric medicine should be applied to a large portion of HIV patients. Particular management guidelines and recommendations for the optimal health care of elderly PLWH are essential.

In the present study, PLWH with major OIs after ART initiation were approximately twice as likely to die than those who did not have major OIs. Although the etiology of OIs cannot be retrieved from the database, tuberculosis is the leading cause of morbidity and mortality among PLWH worldwide, including Thailand [29]. One

major challenge in the reduction of opportunistic infections associated with HIV infection is the difficulty of diagnosing and treating a new HIV case early before immune deterioration. A significant proportion of newly diagnosed persons have already experienced substantial immune deterioration. Early ART has shown a reduction in morbidity and mortality, in addition to preventing the transmission of HIV infection. A second challenge is that not all newly diagnosed PLWH receive timely continuous HIV care and even start ART. A third challenge is that retention in care to achieve and maintain durable virologic suppression and to reduce the chance of HIV-related OIs remains challenging in the resource-limited setting. Not all persons treated for HIV achieve durable



viral suppression. Furthermore, immune reconstitution syndromes associated with new OIs might occur after ART initiation [30]. On the other hand, this is a reason why previous opportunistic infection were included in the multivariate analysis. Ultimately, durable virologic suppression eliminates most but not all major OIs. Tuberculosis remains at a higher prevalence in persons with HIV regardless of immune status, particularly in high TB

endemic regions. The implementation of effective HIV and TB collaboration service programs is needed. ART regimen factor which stratified as efavirenz-containing or nevirapine-containing or lopinavir/ritonavir-containing regimen was followed the guidelines for antiretroviral therapy in HIV-1 infected adults and adolescents 2014, Thailand [31]. Non-nucleoside reverse transcriptase inhibitor (NNRTI) is potent, proven long-term efficacy,



less drug–drug interactions and low cost. Thai HIV treatment guideline recommended NNRTI-based ART as the first-line recommended regimen for treatment-naive HIV-infected patients in the country during this study period. Efavirenz-based ART has shown durability, good virologic response, once daily used and is co-formulated with tenofovir and emtricitabines. Thus, efavirenz is recommended as the third drug combined with NRTI backbone. Nevirapine is more toxic during the first three months of therapy [32].

There were a number of limitations in the present study. First, it is a retrospective study reviewing secondary data; hence, some details of patients' clinical condition may be underestimated and missed, such as, details of ART complications, characteristics of major opportunistic infections, nutritional status, baseline and follow-up weights, and baseline and follow-up WHO clinical stage. Furthermore, data regarding adherence to ART is lacking. Almost all of the PLWH in this study were initiated with NNRTI-based ART, which is less durable than the current recommended ART with integrase inhibitor-based regimen, and better treatment outcomes can be achieved despite lower adherence [33]. Integrase inhibitor-based ART regimens replacing PI- and NNRTI-based regimens have been implemented in Thailand since early 2021. In addition, the route of HIV transmission was omitted, though it is known to have an impact on morbidity and mortality [34]. Ultimately, the definite causes of death could not be identified owing to unavailable information in the database. However, the real-world evidence from the present study represents substantial all-cause mortality in Thai PLWH, even if the availability and accessibility of ART has improved in the past two decades. The present finding would support policy-makers and health care providers in further managing treatment for PLWH.

## Conclusion

In summary, this study demonstrated the substantial mortality rate over 5 consecutive years of the follow-up period. Patients who had a history of ART switching, major opportunistic infections, a lower baseline CD4 count, an older age, and received nevirapine-based regimens had an increased risk of death. Further prospective interventional studies with the aim of decreasing morbidity and mortality are needed in Thai PLWH. Active early case finding and prompt initiation of ART, which durable and less long-term side effect regimens, as well as continuous HIV care are a cornerstone to improve survival.

## Acknowledgements

We thank all PLWH in the national HIV database, Nintita Sripaiboonkij Thokanit, Dr. PH for statistical analysis, Channarong Chokbumrungsuk for data management, staff at National Health Security office region 4 and Janssen Pharmaceutical Company (Thailand) for financial support.

## Authors' contributions

WM participated in the design of the study and statistical analysis and drafted the manuscript. LC and CS participated in the design of the study and drafted the manuscript. All authors read and approved the final manuscript.

## Funding

This study was funded by Janssen Pharmaceutical Company (Thailand).

## Availability of data and materials

The datasets used and/or analyzed during the present study are available from the corresponding author upon reasonable request.

## Declarations

### Ethical approval and consent to participate

The study was reviewed and approved by the institutional review board of Bamrasnaradura Infectious Diseases Institute (S021 h/62). This study required the institution's institutional review board to approve a waiver of the informed consent process.

### Consent for publication

Not applicable.

### Competing interests

The authors declare that they have no competing interests.

### Author details

<sup>1</sup>Present Address: Bamrasnaradura Infectious Diseases Institute, Department of Diseases Control, Ministry of Public Health, Nonthaburi 11000, Thailand.

<sup>2</sup>National Health Security Office Region 4, Saraburi 18000, Thailand.

Received: 16 April 2021 Accepted: 30 September 2021

Published online: 12 October 2021

## References

1. AIDSinfo. Global AIDS response progress reporting. People living with HIV receiving ART. 2020. <http://aidsinfo.unaids.org/>. Accessed 20 Mar 2021.
2. Thailand national strategy to end AIDS 2017–2030. [https://hivhub.dcc.moph.go.th/Download/Strategy/EN\\_3Thailand%20National%20Strategy%20to%20End%20AIDS.pdf](https://hivhub.dcc.moph.go.th/Download/Strategy/EN_3Thailand%20National%20Strategy%20to%20End%20AIDS.pdf). Accessed 20 Aug 2021.
3. HIV and AIDS in Thailand. Global information and education on HIV and AIDS. 2021. <https://www.avert.org/professionals/hiv-around-world/asia-pacific/thailand>. Accessed 20 Mar 2021.
4. Wibulpolprasert S, Wattanamano N, Ekachampaka P. Thailand Health Profile Report 2008–2010. Bureau of Policy and Strategy, Ministry of Public Health. <http://www.moph.go.th/ops.thp>. Accessed 20 Mar 2021.
5. World Health Organization. WHO case definitions of HIV for surveillance and revised clinical staging and immunological classification of HIV-related disease in adults and children. World Health Organization. 2007. <https://apps.who.int/iris/handle/10665/43699>. Accessed 20 Aug 2021.
6. Benchimol El, Smeeth L, Guttman A, Harron K, Moher D, Petersen I, et al. The reporting of studies conducted using observational routinely-collected health data (RECORD) statement. *PLoS Med*. 2015;12(10):e1001885.
7. Manosuthi W, Chottanapand S, Thongyen S, Chaovavanich A, Sungkanuparph S. Survival rate and risk factors of mortality among HIV/tuberculosis-coinfected patients with and without antiretroviral therapy. *J Acquir Immune Defic Syndr*. 2006;43(1):42–6.
8. Lima VD, Hogg RS, Harrigan PR, Moore D, Yip B, Wood E, et al. Continued improvement in survival among HIV-infected individuals with newer forms of highly active antiretroviral therapy. *AIDS*. 2007;21(6):685–92.
9. Mouton Y, Alfandari S, Valette M, Cartier F, Dellamonica P, Humbert G, et al. Impact of protease inhibitors on AIDS-defining events and hospitalizations in 10 French AIDS reference centres. *AIDS*. 1997;11(12):101–5.
10. Egger M, Hirschel B, Francioli P, Sudre P, Wirz M, Flepp M, et al. Impact of new antiretroviral combination therapies in HIV infected patients in Switzerland: prospective multicentre study. *BMJ*. 1997;315(7117):1194–9.

11. Walensky RP, Paltiel AD, Losina E, Mercincavage LM, Schackman BR, Sax PE, et al. The survival benefits of AIDS treatment in the United States. *J Infect Dis.* 2006;194(1):11–9.
12. GBD 2017 Hiv collaborators. Global, regional, and national incidence, prevalence, and mortality of HIV, 1980–2017, and forecasts to 2030, for 195 countries and territories: a systematic analysis for the global burden of diseases, injuries, and risk factors study 2017. *Lancet HIV.* 2019;6:e831–59.
13. The Antiretroviral Therapy Cohort Collaboration. Survival of HIV-positive patients starting antiretroviral therapy between 1996 and 2013: a collaborative analysis of cohort studies. *Lancet HIV.* 2017;4:e349–356.
14. The IeDEA and COHERE in EuroCoord Cohort Collaboration. All-cause mortality after antiretroviral therapy initiation in HIV-positive women from Europe, Sub-Saharan Africa and the Americas. *AIDS.* 2020;34:277–89.
15. Hogg RS. Improved survival among HIV-infected individuals following initiation of antiretroviral therapy. *JAMA.* 1998;279(6):450.
16. Cornell M, Grimsrud A, Fairall L, Fox MP, van Cutsem G, Giddy J, et al. Temporal changes in programme outcomes among adult patients initiating antiretroviral therapy across South Africa, 2002–2007. *AIDS.* 2010;24(14):2263–70.
17. Boulle A, Cutsem GV, Hilderbrand K, Cragg C, Abrahams M, Mathee S, et al. Seven-year experience of a primary care antiretroviral treatment programme in Khayelitsha, South Africa. *AIDS.* 2010;24:563–72.
18. Gardner EM, McLees MP, Steiner JF, Rio CD, Burman WJ. The spectrum of engagement in HIV care and its relevance to test-and-treat strategies for prevention of HIV infection. *Clin Infect Dis.* 2011;52(6):793–800.
19. Frieden TR, Jaffe HW, Stephens JW, Thacker SB, Zaza S, Moolenaar RL, et al. Vital signs: HIV prevention through care and treatment—United States. *MMWR.* 2011;60(47):36.
20. World Health Organization. Global HIV programme: HIV data and statistics. 2021. <https://www.who.int/teams/global-hiv-hepatitis-and-stis-programmes/hiv/strategic-information/hiv-data-and-statistics>. Accessed 20 Mar 2021.
21. Emler CA. A comparison of HIV stigma and disclosure patterns between older and younger adults living with HIV/AIDS. *AIDS Patient Care STDs.* 2006;20(5):350–8.
22. Bogart LM, Cowgill BO, Kennedy D, Ryan G, Murphy DA, Elijah J, et al. HIV-related stigma among people with HIV and their families: a qualitative analysis. *AIDS Behav.* 2008;12(2):244–54.
23. Logie C, Gadalla TM. Meta-analysis of health and demographic correlates of stigma towards people living with HIV. *AIDS Care.* 2009;21(6):742–53.
24. Emler CA, Fredriksen-Goldsen KI, Kim H-J. Risk and protective factors associated with health-related quality of life among older gay and bisexual men living with HIV disease. *Gerontologist.* 2013;53(6):963–72.
25. Wing EJ. HIV and aging. *Int J Infect Dis.* 2016;53:61–8.
26. Mpondo BCT. HIV Infection in the elderly: arising challenges. *J Aging Res.* 2016;2016: 2404857.
27. Dawood H, Hassan-Moosa R, Zuma NY, Naidoo K. Mortality and treatment response amongst HIV-infected patients 50 years and older accessing antiretroviral services in South Africa. *BMC Infect Dis.* 2018;18:168.
28. Rucker SCM, Tayea A, Bitilinyu-Bangoh J, Bermúdez-Aza EH, Salumu L, Quiles IA, et al. High rates of hypertension, diabetes, elevated low-density lipoprotein cholesterol, and cardiovascular disease risk factors in HIV-infected patients in Malawi. *AIDS.* 2018;32(2):253–60.
29. WHO. Global tuberculosis report 2020. 2020. <https://apps.who.int/iris/bitstream/handle/10665/336069/9789240013131-eng.pdf>. Accessed 20 Mar 2021.
30. Müller M, Wandel S, Colebunders R, Attia S, Furrer H, Egger M. Incidence and lethality of immune reconstitution disease in HIV-infected patients starting antiretroviral therapy: systematic review and meta-analysis. *Lancet Infect Dis.* 2010;10(4):251–61.
31. Adults and Adolescents Committee of the Thai National HIV Guidelines Working Group, Manosuthi W, Ongwandee S, Bhaakeecheep S, Leechawengwongs M, Ruxrungtham K, Phanuphak P, et al. Guidelines for antiretroviral therapy in HIV-1 infected adults and adolescents 2014, Thailand. *AIDS Res Ther.* 2015;24(12):12.
32. van Leth F, Phanuphak P, Ruxrungtham K, Baraldi E, Miller S, Gazzard B, et al. Comparison of first-line antiretroviral therapy with regimens including nevirapine, efavirenz, or both drugs, plus stavudine and lamivudine: a randomised open-label trial, the 2NN study. *Lancet.* 2004;363(9417):1253–63.
33. Messiaen P, Wensing AMJ, Fun A, Nijhuis M, Brusselsaers N, Vandekerckhove L. Clinical use of HIV integrase inhibitors: a systematic review and meta-analysis. *PLoS ONE.* 2013;8(1): e52562.
34. Chen Q, Zeng D, She Y, Lyu Y, Gong X, Feinstein MJ, et al. Different transmission routes and the risk of advanced HIV disease: a systematic review and network meta-analysis of observational studies. *E Clin Med.* 2019;16:121–8.

## Publisher's Note

Springer Nature remains neutral with regard to jurisdictional claims in published maps and institutional affiliations.

Ready to submit your research? Choose BMC and benefit from:

- fast, convenient online submission
- thorough peer review by experienced researchers in your field
- rapid publication on acceptance
- support for research data, including large and complex data types
- gold Open Access which fosters wider collaboration and increased citations
- maximum visibility for your research: over 100M website views per year

At BMC, research is always in progress.

Learn more [biomedcentral.com/submissions](https://biomedcentral.com/submissions)

