


RESEARCH

Open Access



# Clinical benefits of adjuvant chemotherapy with carboplatin and gemcitabine in patients with non-small cell lung cancer: a single-center retrospective study

Shinogu Takashima<sup>1</sup>, Kazuhiro Imai<sup>1\*</sup> , Maiko Atari<sup>1</sup>, Tsubasa Matsuo<sup>1</sup>, Katsutoshi Nakayama<sup>2</sup>, Yusuke Sato<sup>1</sup>, Satoru Motoyama<sup>1</sup>, Hiroyuki Shibata<sup>3</sup>, Kyoko Nomura<sup>4</sup> and Yoshihiro Minamiya<sup>1</sup>

## Abstract

**Purpose:** In cases of non-small cell lung cancer (NSCLC), surgery remains the best option for cure, but surgery is of benefit only when the disease is localized. Although adjuvant chemotherapy reportedly has a significant beneficial effect on survival, the benefit of a carboplatin (CBDCA) regimen is unclear. We therefore investigated the efficacy and tolerability of CBDCA (area under the curve 5) plus gemcitabine (GEM, 1000 mg/m<sup>2</sup>) as adjuvant chemotherapy.

**Methods:** A total of 82 pStage IB–IIIA NSCLC patients who had undergone complete resection and received adjuvant chemotherapy were analyzed retrospectively. Among them, 65 patients received CBDCA + GEM and 17 received CDDP + VNR. Propensity score analysis generated 17 matched pairs of both groups.

**Results:** Sixty-five patients received CBDCA + GEM. Their 5-year relapse-free survival (RFS) and overall survival were 47.8% (median, 52.5 months) and 76.9% (median, 90.1 months), respectively. Toxicities, which included neutropenia, nausea/anorexia, fatigue, and vasculitis, were significantly milder than with CDDP + VNR. There were no significant differences in RFS between CBDCA + GEM and CDDP + VNR ( $p = 0.079$ ) after matching for age, performance status, and pStage.

**Conclusion:** CBDCA + GEM was effective and well tolerated as adjuvant chemotherapy, with a manageable toxicity profile.

**Keywords:** Carboplatin, Gemcitabine, Adjuvant chemotherapy, Lung cancer

## Introduction

Lung cancer is the most common cause of cancer-related death globally. In cases of non-small cell lung cancer (NSCLC), surgery remains the best option for a potential cure. However, surgery is only of benefit to patients with localized disease and no evidence of mediastinal lymph node involvement or distant metastasis. Following surgical resection, patients with stage II–III advanced NSCLC face a high risk of relapse, and the

treatment strategy for perioperative advanced NSCLC patients remains unsatisfactory [1, 2].

Adjuvant chemotherapy is now standard treatment for patients with completely resected advanced NSCLC. Randomized controlled trials (RCTs) and meta-analyses have shown that adjuvant chemotherapy improves survival over surgery alone [3–7]. The Lung Adjuvant Cisplatin Evaluation (LACE) meta-analysis reported that cisplatin-based adjuvant chemotherapy had a 5-year survival benefit of 5.4% with an overall hazard ratio for death of 0.89 (95% confidence interval [CI] 0.82–0.96) [5], which represents a significant survival benefit for the patients with stage II or stage III NSCLC [6]. In 2017,

\* Correspondence: [i-karo@mui.biglobe.ne.jp](mailto:i-karo@mui.biglobe.ne.jp)

<sup>1</sup>Department of Thoracic Surgery, Akita University Graduate School of Medicine, 1-1-1 Hondo, Akita 010-8543, Japan

Full list of author information is available at the end of the article



© The Author(s). 2020 **Open Access** This article is licensed under a Creative Commons Attribution 4.0 International License, which permits use, sharing, adaptation, distribution and reproduction in any medium or format, as long as you give appropriate credit to the original author(s) and the source, provide a link to the Creative Commons licence, and indicate if changes were made. The images or other third party material in this article are included in the article's Creative Commons licence, unless indicated otherwise in a credit line to the material. If material is not included in the article's Creative Commons licence and your intended use is not permitted by statutory regulation or exceeds the permitted use, you will need to obtain permission directly from the copyright holder. To view a copy of this licence, visit <http://creativecommons.org/licenses/by/4.0/>. The Creative Commons Public Domain Dedication waiver (<http://creativecommons.org/publicdomain/zero/1.0/>) applies to the data made available in this article, unless otherwise stated in a credit line to the data.

the Japanese Guidelines for the Diagnosis and Treatment of Lung Cancer changed and now recommend cisplatin (CDDP)-based adjuvant chemotherapy, most often administered as CDDP + vinorelbine (VNR), with strength of recommendation 1 (high)/evidence quality A (high) based on RCTs and systematic reviews [3, 5–7]. Likewise, the National Comprehensive Cancer Network (NCCN) guideline and Society of Clinical Oncology (ASCO)/Cancer Care Ontario (CCO) clinical practice guideline were updated with the same strength of recommendation [7, 8]. CDDP-based adjuvant chemotherapy was recommended for routine use in patients with stage II or IIIA disease and recommended for consideration in patients with stage IB NSCLCs [7]. This is despite the low CDDP completion rate due to severe toxicities that include nausea, vomiting, and nephrotoxicity.

In its 2018 update, however, the NCCN Guideline added two preoperative and postoperative therapy regimens for patients with comorbidities or those not able to tolerate CDDP: (1) carboplatin (CBDCA)/gemcitabine (GEM) and (2) CBDCA/pemetrexed (non-squamous only) [8]. Although most recent evidence indicates that cisplatin-based regimen is standard as adjuvant chemotherapy for R0 resected pStage II-III NSCLC patients, CBDCA has been found to be an acceptable alternative to cisplatin in doublet chemotherapy [9]. Moreover, evidence suggests the platinum combination agents GEM, paclitaxel (PTX), and docetaxel also have activity as adjuvant chemotherapy agents [5, 10–12].

GEM (pyrimidine antimetabolite, 2',2'-difluorodeoxycytidine) [13] exhibits wide-spectrum of antitumor activity. The combination of platinum with GEM is used clinically for advanced NSCLC [14], and the superiority of GEM-containing regimens in terms of efficacy and toxicity over other cytotoxic chemotherapy regimens has been shown in several studies [15, 16]. Among now-existing cytotoxic regimens for advanced NSCLC, CBDCA with GEM has proven to be one of the best, with definite anticancer efficacy and a manageable toxicity profile without thrombocytopenia [17]. In addition, three phase II trials of CBDCA + GEM have reported that the regimen is effective for disease control and is well tolerated by patients after surgery [18–20]. This regimen is thus one of the adjuvant chemotherapy options suitable for outpatients with completely resected NSCLC.

Although CBDCA + GEM is a feasible and promising regimen for adjuvant chemotherapy with lower levels of toxicity, most of the phase II studies did not compare it with CDDP + VNR, the current standard adjuvant chemotherapy regimen. We hypothesized that given the higher patient tolerance, CBDCA + GEM has the potential to increase the completion rate while decreasing adverse events such as nausea, vomiting, hair loss, febrile neutropenia, and nephrotoxicity. The aim of the present

retrospective study was to compare the efficacy and tolerability of the CBDCA + GEM regimen with the standard CDDP + VNR regimen as adjuvant chemotherapy for patients with pathological stage II–III NSCLC who underwent complete surgical resection at a single center.

## Methods

### Study population

This was a single-center, retrospective study of treatment with CBDCA + GEM for patients who had undergone complete surgical resection (R0 resection) for pStage IB–III NSCLC (UICC TNM Classification of Malignant Tumors 8th edition) [21]. This study was performed in accordance with the principles of the Declaration of Helsinki and Good Clinical Practice guidelines. The retrospective study was approved by the institutional review board (IRB) at Akita University Hospital (Approval number/ID 2336), and all data were collected under this IRB Protocol No. 2426, which allows collection of tissue and medical record with consent or waiver of consent when no personalized health information is required, as was the case for this study. We analyzed 82 of 347 pStage IB–III patients who underwent thoracic surgery at Akita University Hospital between January 2009 and August 2019. All 82 patients received adjuvant chemotherapy that did not include tegafur-uracil (UFT). Among that group, 65 patients received CBDCA + GEM and 17 received CDDP + VNR. All patients underwent segmentectomy, lobectomy, or pneumonectomy along with systematic lymph node dissection. The patients' characteristics are listed in Table 1.

### Adjuvant chemotherapy

Patients receiving CBDCA + GEM were administered GEM at 1000 mg/m<sup>2</sup> intravenously over 3 h on day 1 and/or day 8. CBDCA at a dose based on an area under the curve (AUC) of 5 was given intravenously over 30 min after GEM on day 1. Patients receiving CDDP + VNR were administered VNR at 25 mg/m<sup>2</sup> intravenously over 5 min on day 1 and/or day 8). CDDP at 80 mg/m<sup>2</sup> was given intravenously over 30 min after the VNR on day 1. Chemotherapy was repeated every 4 weeks for up to 4 cycles unless there was evidence of disease progression or unacceptable toxicity. Toxicities were graded using the National Cancer Institute Common Toxicity Criteria (NCI-CTC), version 5.0. Chemotherapy was modified for toxicity and adverse effects as necessary. Patients were then followed up within 2 months after the final chemotherapy cycle and evaluated based on a physical examination, chest X-ray, CT, and laboratory tests. Although the follow-up schedule after surgery varied, it usually entailed a chest CT every 3–6 months and brain MRI, bone scintigraphy, or PET/CT every 6–12 months. After 2 years, the frequency of chest CTs was reduced to once every 6–12 months. If recurrence was

**Table 1** Patient characteristics. \* $P < 0.05$ 

Patient characteristics	CBDCA + GEM (n = 65)	CDDP + VNR (n = 17)	P
Median age, years (range)	66 (43–79)	59 (33–70)	0.004*
Gender (%)			0.239
Male	51 (78.4)	11 (64.7)	
Female	14 (21.5)	6 (35.2)	
Surgical procedure (%)			0.874
Lobectomy	61 (93.8)	16 (94.1)	
Pneumonectomy	4 (6.1)	1 (5.8)	
ECOG performance status (%)			0.002*
0	36 (55.3)	17 (100)	
1	27 (41.5)	0	
2	2 (3.0)	0	
Pathological stage (%)			0.532
IB	3 (4.6)	0	
IIA	3 (4.6)	1 (5.8)	
IIB	27 (41.5)	4 (23.5)	
IIIA	22 (33.8)	8 (47.0)	
IIIB	10 (15.3)	4 (23.5)	
Histology (%)			0.185
Adenocarcinoma	44 (67.6)	16 (94.1)	
Squamous cell carcinoma	19 (29.2)	1 (5.8)	
Large cell carcinoma	1 (1.5)	0	
Others	1 (1.5)	0	
Lymph nodal status (%)			0.271
N0	15 (23.0)	2 (11.7)	
N1	22 (33.8)	4 (23.5)	
N2	28 (43.0)	11 (64.7)	
Number of course			0.119
1/2/3/4	2/9/5/49	2/0/3/12	
EGFR mutation (%)			0.626
Negative/unknown	53 (81.5)	13 (76.4)	
Positive	12 (18.4)	4 (23.5)	
ALK fusion (%)			0.301
Negative/unknown	64 (98.4)	16 (94.1)	
Positive	1 (1.5)	1 (5.8)	

suspected, the follow-up schedule was tightened. Radiographic responses were assessed using RECIST ver. 1.1 [22]. Treatment for recurrence was not restricted in the present study.

We established relapse free survival (RFS) as the primary endpoint. It was defined as the time from surgery to recurrence (locoregional and/or distant metastasis or death as a result of any cause). The secondary end-points were to evaluate the overall survival (OS), and clinical safety compared with another regimen.

#### Evaluation and statistical analysis

Group data are expressed as means  $\pm$  standard deviation. Continuous data were compared using unpaired *t* tests or the Wilcoxon/Kruskal-Wallis test, while categorical data were compared using the chi-squared test with continuity correction or Fisher's exact test when applicable. The Kaplan-Meier method was used to estimate RFS and OS and log-rank test was used to assess the impact of surgery on RFS and OS. *P* values were 2-sided and considered significant if less than 0.05. To control for potential differences in the preoperative characteristics

of the patients in the two groups, propensity score matching was used. The propensity scores were generated using logistic regression based on clinically relevant variables such as age, performance status (PS), and pStage, and were considered as possible confounders due to their potential association with the outcome of interest based on clinical knowledge. Patients were matched 1:1 through nearest neighbor matching (caliper width: 0.2) without replacement. To measure covariate balance, we used the standardized difference, whereby an absolute standardized difference above 0.1 represents meaningful imbalance. Statistical analysis was performed using JMP IN 14.2.0 software (SAS Institute, Cary, NC, USA).

## Results

Between January 2009 and August 2019, 82 pStage IB-III A NSCLC patients were deemed eligible for inclusion in this study. A diagram of the selection process is shown in Fig. 1, and the patients' clinical characteristics are summarized in Table 1. The median follow-up period was 3.19 years (range per trial, 0.48 to 8.28 years). As adjuvant chemotherapy, 65 of these patients received CBDCA + GEM, while the remaining 17 received CDDP + VNR.

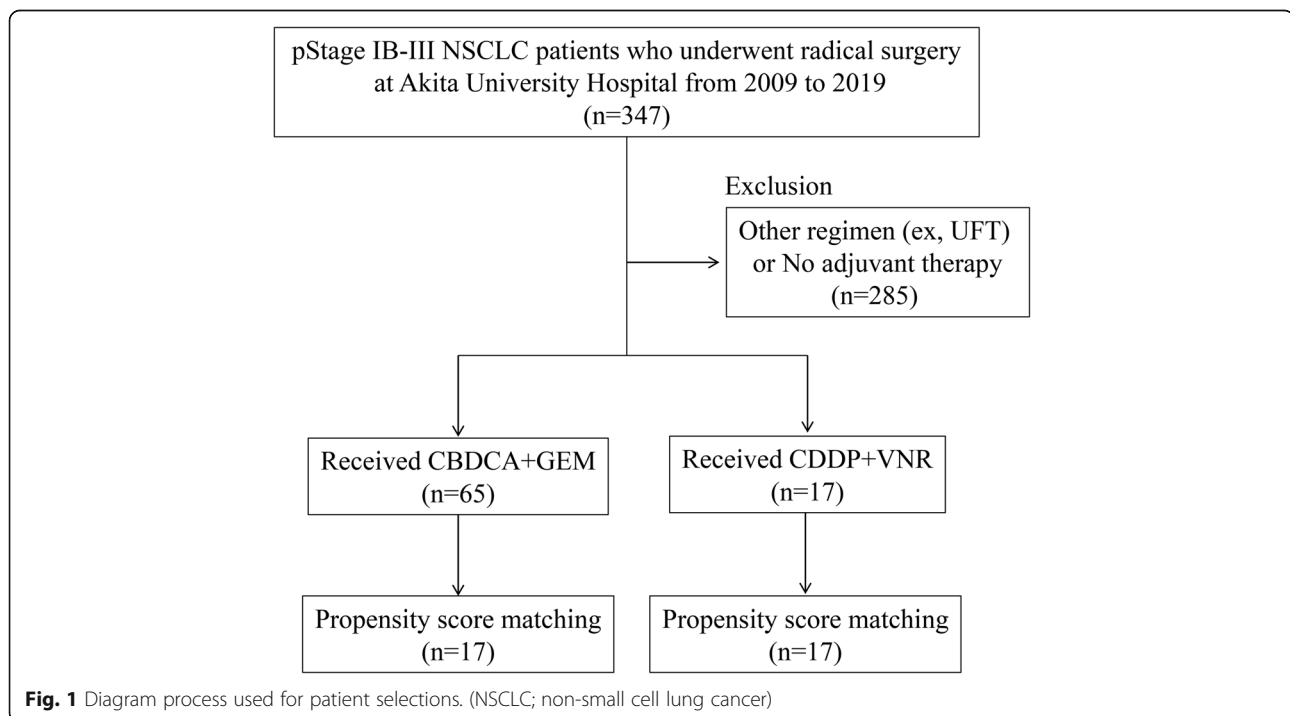
The 5-year RFS and OS among patients receiving the CBDCA + GEM regimen were 47.8% and 76.9%, respectively. The median RFS and OS time in the CBDCA + GEM group was 52.5 months (range, 4.2 to 85.6 months, 95% CI 16.9–85.6) and 90.1 months (range, 11.5 to 99.3 months, 95% CI 65.2–99.3) (Fig. 2a, d). Among them, the 5-year RFS in patients with adenocarcinoma and

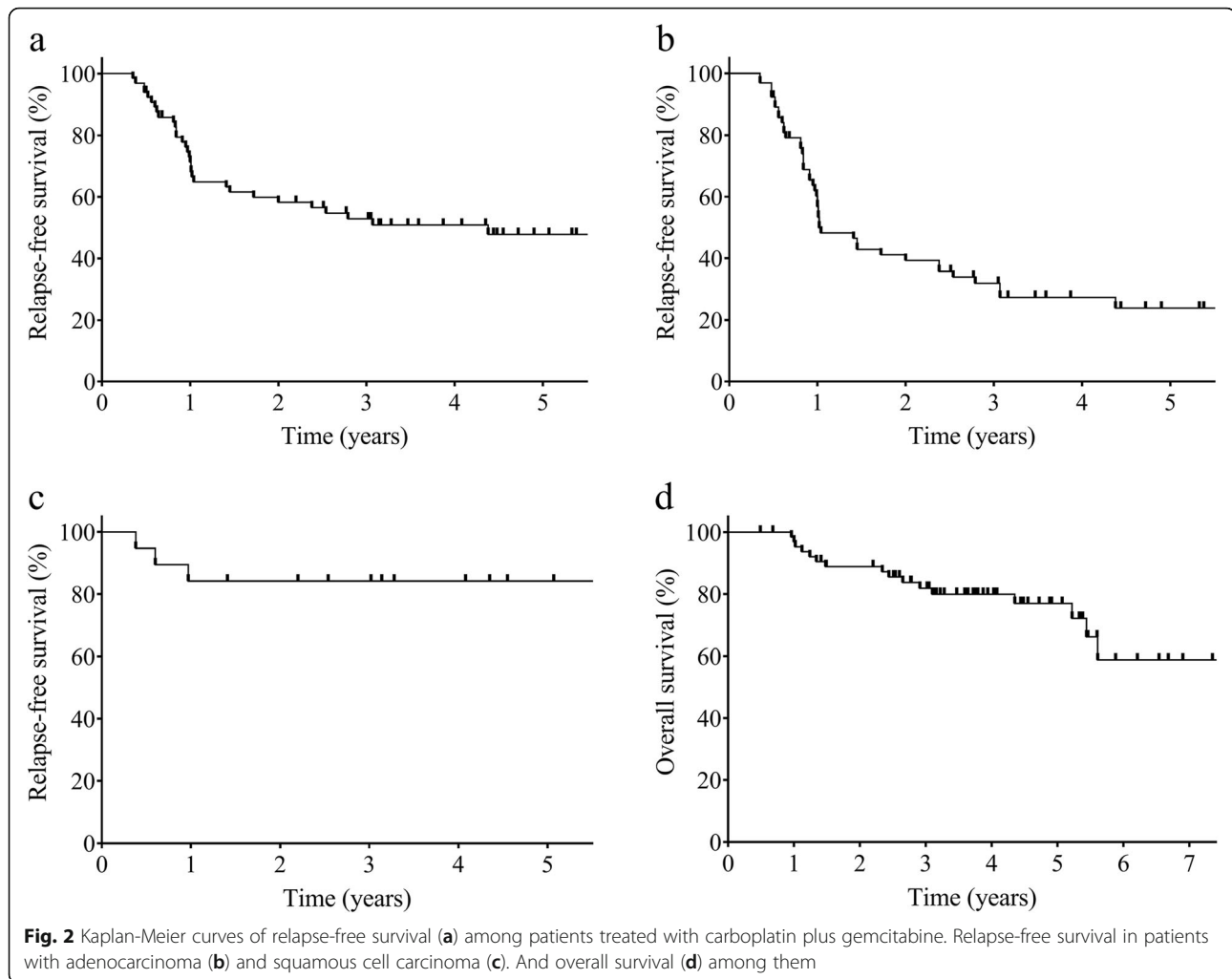
squamous cell carcinoma were 31.5% and 84.2%, respectively, and the median RFS time were 20.6 months (range, 4.2 to 85.6 months, 95% CI 11.8–52.5) and 84.9 months (range, 4.5 to 88.2 months, 95% CI not calculated) (Fig. 2b, c). The 5-year OS in patients with adenocarcinoma and squamous cell carcinoma were 62.6% and 94.4%, respectively, and the median OS time were 98.4 months (range, 5.8 to 99.3 months, 95% CI 62.4–99.3) and 90.0 months (range, 16.9 to 90.0 months, 95% CI 67.3–90.0).

The 5-year RFS and OS among patients receiving the CDDP + VNR regimen were 0% and 100%, respectively. The median RFS time in the CDDP + VNR group was 10.4 months (range, 4.9 to 24.1 months, 95% CI 6.2–11.1) and the median OS time was not reached.

All patients were evaluated for toxicities (Table 2). The observed toxicities were milder in the CBDCA + GEM group, and the patients showed better compliance than in the CDDP + VNR group. Grade 3/4 hematological adverse effects of CBDCA + GEM included neutropenia (15.3%) and thrombocytopenia (4.6%). The non-hematological adverse effects of both regimens consisted mainly of nausea/vomiting. No grade 3/4 non-hematological adverse effects occurred in the CBDCA + GEM group. In addition, the incidences of other mild adverse effects, such as fatigue and vasculitis, were lower in the CBDCA + GEM than CDDP + VNR group.

Propensity scores were generated using logistic regression based on clinically relevant variables such as age and PS, which significantly differed between the two groups, as well as pStage. Propensity score analysis yielded 17 well-





matched patient pairs (Table 3). Briefly, 26.1% (17 of 65 patients) in the CBDCA + GEM group and 100.0% (17 of 17 patients) of the CDDP + VNR group were matched. Among them, 88.2% of patients in the CBDCA + GEM group completed 4 chemotherapy cycles, while 70.5% patients in the CDDP + VNR group completed 4 cycles. There were no significant differences in age, PS or pStage between the two groups after matching, and RFS also did not differ between the CBDCA + GEM and CDDP + VNR groups ( $p = 0.079$ ) (Fig. 3).

## Discussion

In the present study, we found the CBDCA + GEM regimen to be equally effective with less toxicity than the CDDP + VNR regimen currently adopted as standard adjuvant chemotherapy. CDDP-based regimens sometimes induce unacceptable toxicity and require hydration to prevent renal toxicity [23]. Consequently, CDDP-based regimens often have low patient compliance in the outpatient setting. On the other hand, the CBDCA + GEM regimen

was well-tolerated and available to outpatients for short duration treatment as adjuvant chemotherapy.

Previously, CALGB 9633 (CBDCA AUC6 + PTX 200 mg/m<sup>2</sup>) was proposed as a CBDCA-based adjuvant chemotherapy regimen for use on an outpatient basis. However, mature results from the only RCT designed specifically for completely resected T2N0 pStage IB NSCLC patients suggested adjuvant chemotherapy with CALGB 9633 provides no significant OS advantage across the entire cohort [24]. Nonetheless, exploratory analysis demonstrated a significant improvement in both OS and disease-free survival (DFS) for patients with tumors  $\geq 4$  cm in diameter (HR, 0.69; 90% CI 0.48–0.99), and OS analysis indicated a 31% reduction in risk of death. In general, CDDP-based regimens had a higher response rate than CBDCA-based regimens in advanced and metastatic NSCLCs, but according to three meta-analyses there was no significant difference in the OS rate between the two platinum regimens [9, 25, 26]. Regarding toxicity, CBDCA-based regimens frequently lead to thrombocytopenia, while CDDP-based regimens

**Table 2** Adverse events

NCI-CTC grade (ver.5)	CBDCA + GEM (n = 65)			CDDP + VNR (n = 17)			P
	G1/2 (%)	G3/4 (%)	total	G1/G2 (%)	G3/4 (%)	total	
Hematological event							
White blood cell decreased	21 (32.3)	0	21 (32.3)	6 (35.2)	0	6 (35.2)	0.925
Neutropenia	18 (27.6)	10 (15.3)	28 (43.0)	3 (17.6)	8(47.0)	11 (64.7)	0.002*
Thrombocytopenia	21 (32.2)	3 (4.6)	24 (36.9)	2 (11.7)	0	2 (11.7)	0.377
Anemia	5 (7.6)	0	5 (7.6)	1 (5.8)	0	1 (5.8)	0.076
Febrile neutropenia	0	0	0	0	0	0	
Non-hematological event							
Nausea	5 (7.6)	0	5 (7.6)	10 (58.8)	2(11.7)	12(70.5)	< 0.001*
Anorexia	5 (7.6)	0	5 (7.6)	6 (35.2)	3(17.6)	9 (52.9)	< 0.001*
Mucositis oral	2 (3.0)	0	2 (3.0)	0	0	0	0.464
Fatigue	7 (10.7)	0	7 (10.7)	7 (41.1)	0	7 (41.1)	0.045*
AST increased	5 (7.6)	0	5 (7.6)	1 (5.8)	0	1 (5.8)	0.798
ALT increased	10 (15.3)	0	10 (15.3)	3 (17.6)	0	3 (17.6)	0.272
Creatinine increased	2 (3.0)	0	2 (3.0)	2 (11.7)	0	2 (11.7)	0.121
Constipation	14 (21.5)	0	14 (21.5)	2 (11.7)	0	2 (11.7)	0.631
Diarrhea	1 (1.5)	0	1 (1.5)	0	0	0	0.606
Pneumonitis	1 (1.5)	0	1 (1.5)	0	1(5.8)	1 (5.8)	0.128
Infection	1 (1.5)	0	1 (1.5)	0	0	0	0.606
Rash	3 (4.6)	0	3 (4.6)	0	0	0	0.665
Hypophosphatemia	1 (1.5)	0	1 (1.5)	0	0	0	0.606
Vertigo	2 (3.0)	0	2 (3.0)	1 (5.8)	0	1 (5.8)	0.583
Insomnia	1 (1.5)	0	1 (1.5)	0	0	0	0.606
Alopecia	1 (1.5)	0	1 (1.5)	0	0	0	0.606
Peripheral nerve disorder	1 (1.5)	0	1 (1.5)	0	0	0	0.606
Supraventricular tachycardia	0	1 (1.5)	1 (1.5)	0	0	0	0.606
Vasculitis	0	0	0	5 (29.4)	0	5 (29.4)	< 0.001*

\*P &lt; 0.05

frequently lead to nausea and vomiting. Given the CALBG 9633 result, the CDDP-based regimen is currently recommended as the standard adjuvant chemotherapy for patients with stage II–III NSCLC. However, the CDDP regimen is associated with a low completion rate and relatively severe toxicities in patients with resected NSCLC who have lost respiratory function due to lobectomy or pneumonectomy.

Three studies have reported on the use of CBDCA + GEM in patients with completely resected NSCLC as adjuvant chemotherapy [18–20]. Their findings indicate that the CBDCA + GEM regimen has a high chemotherapy completion rate and an acceptably low level of toxicity that includes neutropenia and thrombocytopenia. In our study, the grade 3/4 neutropenia rate was 15.3% and grade 3/4 thrombocytopenia was 4.6%, but both were easily manageable. Moreover, 88.2% of patients

completed the planned 4 cycles of therapy. By contrast, the completion rate for the CDDP + VNR regimen rate was only 70.5%. The present study was retrospective study of only a small number of resected NSCLC patients, but its advantage was that of the comparison of the efficacy and tolerability of the CBDCA + GEM with the standard CDDP + VNR by propensity score matching. Especially, the 5-year RFS in squamous cell carcinoma patients treated with CBDCA + GEM was 84.2%. The CBDCA + GEM regimen might be most effective for squamous cell lung cancer. Although it may be difficult to draw a conclusion regarding the survival benefit of CBDCA + GEM from our study, we believe that CBDCA + GEM is a feasible and promising adjuvant chemotherapy option for those reasons.

Currently, the role of molecularly targeted therapies such as epidermal growth factor receptor (EGFR)

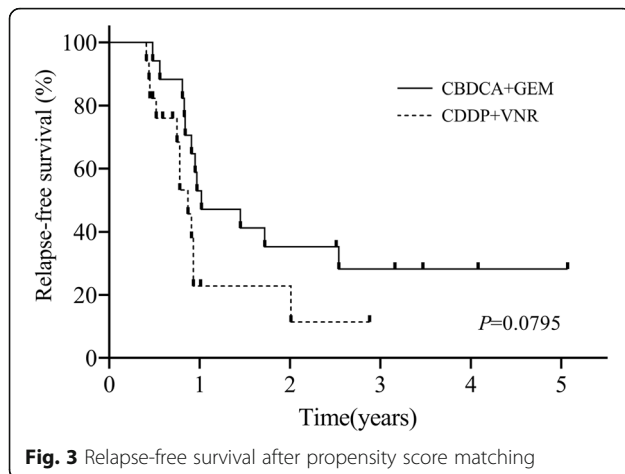
**Table 3** Matched patient characteristics

Matched characteristics	CBDCA + GEM (n = 17)	CDDP + VNR (n = 17)	P
Median age, years (range)	62 (47–70)	59 (33–70)	0.458
Gender (%)			0.243
Male	14 (82.3)	11 (64.7)	
Female	3 (17.6)	6 (35.2)	
Surgical procedure (%)			0.367
Lobectomy	17 (100.0)	16 (94.1)	
Pneumonectomy	0	1 (5.8)	
ECOG performance status (%)			1
0	17 (100)	17 (100)	
Pathological stage (%)			0.922
IIA	2 (11.7)	1 (5.8)	
IIB	3 (17.6)	4 (23.5)	
IIIA	8 (47.0)	8 (47.0)	
IIIB	4 (23.5)	4 (23.5)	
Histology (%)			0.871
Adenocarcinoma	14 (82.3)	16 (94.1)	
Squamous cell carcinoma	3 (17.6)	1 (5.8)	
Lymph nodal status (%)			0.513
N0	4 (23.5)	2 (11.7)	
N1	2 (11.7)	4 (23.5)	
N2	11 (64.7)	11 (64.7)	
Number of course			0.434
1/2/3/4	1/0/1/15	2/0/3/12	
EGFR mutation (%)			0.831
Negative/unknown	14 (82.3)	13 (76.4)	
Positive	3(17.6)	4 (23.5)	
ALK fusion (%)			0.310
Negative/unknown	17(100.0)	16(94.1)	
Positive	0	1(5.8)	

\**P* < 0.05

tyrosine kinase inhibitors and immune checkpoint inhibitors as adjuvant therapy for early-stage NSCLC after complete surgical resection remains unclear. These included trials of the EGFR-TKIs gefitinib [27], alone and with addition of bevacizumab [11], and a trial of immunotherapy [28]. Despite the observed benefit from EGFR-TKIs for metastatic EGFR mutation-positive NSCLC, adjuvant therapy with an EGFR-TKI for 2 years did not lead to improved OS [27]. The aim of adjuvant therapy is to eradicate residual tumor cells. One of the concerns with adjuvant TKI therapy is that it can only suppress, not eliminate, the growth of residual tumor cells. Immunotherapies inhibiting programmed cell death-1 or programmed cell death-ligand 1 are now being evaluated in the adjuvant setting [12]. Based on relevant studies, including RCTs and systematic reviews [3,

5–7, 12, 27, 28], the data do not support the use of adjuvant novel chemotherapies, including TKIs, bevacizumab, or immunotherapies, either as an addition to or instead of the CDDP-based regimen. Although multiple biomarkers, including EGFR, KRAS, p53, ERCC1, b-tubulin, PARP1, p27, p16, cyclin E, and BAX, have been evaluated retrospectively, no biomarkers are currently available that are predictive of the effects of adjuvant chemotherapy. Thus, CDDP + VNR remains the standard adjuvant therapy for patients with completely resected stage II–IIIA NSCLCs. Adjuvant osimertinib showed clinically meaningful improvement in DFS in the patients with stage IB–IIIA EGFR mutation-positive NSCLC after complete tumor resection and adjuvant chemotherapy (2-year DFS rate was 89% with osimertinib vs 53% with placebo in the overall population) in the



ADAURA (NCT02511106) study [29]. Further investigation will be needed to evaluate targeted agents in molecularly defined subgroups before new agents can be recommended in the adjuvant setting [12].

The TREAT trial was a randomized phase II trial in patients with resected early stage NSCLC, which tested the hypothesis that a CDDP + pemetrexed (PEM) protocol with reduced toxicity would improve adjuvant chemotherapy drug delivery, compliance, and survival [30]. Although adjuvant chemotherapy with CDDP + PEM is safe and less toxic than the standard CDDP + VNR, OS was not influenced in the treatment arm whether the histologic diagnosis was squamous cell carcinoma or adenocarcinoma. A randomized phase III trial of CDDP + PEM vs. CDDP + VNR as adjuvant chemotherapy for non-squamous pStage II-IIIa NSCLC is ongoing. Although the survival results have yet to be published, it is anticipated that a better cure rate with a new regimen with lower toxicity, such as CDDP + PEM, will be achieved in the near future. However, we believe that CBDCA + GEM as adjuvant chemotherapy may lead to avoid the ineffective use of CDDP/CBDCA + PEM protocol, which have the most effective benefit with less toxicity as cytotoxic chemotherapy for the patients with recurrence/advanced adenocarcinoma, if each overall survival is not influenced.

This study has several limitations. First, it was retrospective in nature and included only a small number of patients followed up for a short period in the CDDP + VNR group, which may have led to suboptimal results. Second, the OS data in the CDDP + VNR group are premature. However, RFS after adjuvant chemotherapy in the present study is a valid surrogate endpoint for OS that is not confounded by crossover of subsequent chemotherapy for recurrence. Third, physicians decided on whether or not to administer adjuvant chemotherapy, and this selection bias could lead to insignificant results of treatment. Fourth, we could not analyze some factors

in the propensity score matching because there were not a sufficient number of analytic cases. Fifth, we did not analyze patients receiving adjuvant UFT. The Japan Lung Cancer Research Group (JLCRG) study of adjuvant UFT is a well-known RCT, in which patients with pStage I lung adenocarcinoma were randomly assigned to 2 years of adjuvant chemotherapy with oral UFT or observation [31]. Adjuvant UFT improved survival among patients with completely resected pT2N0 adenocarcinoma. Although UFT is a commonly used oral chemotherapy in Japan, we excluded it from our analysis because it is not available for lung cancer everywhere in the world.

In summary, we found adjuvant chemotherapy with CBDCA + GEM to be effective for disease control and to be well tolerated by patients with completely resected NSCLC. The CBDCA regimen represents a potential treatment option suitable for use on an outpatient basis in clinical practice.

#### Acknowledgements

The authors are grateful to Prof. Hajime Saito (Department of Chest Surgery, Iwate Medical University) for suggesting data analysis.

#### Authors' contributions

ST collected and analyzed the data and wrote the manuscript. KI analyzed the data and helped to write the manuscript. MA, TM, KN, YS, SM, and HS helped to collect the data. KN suggested the statistical analysis. YM designed and supervised the research. All authors read and approved the final manuscript.

#### Funding

Not applicable.

#### Availability of data and materials

The datasets used and/or analyzed during the current study are available from the corresponding author on reasonable request.

#### Ethics approval and consent to participate

This study was performed in accordance with the principles of the Declaration of Helsinki and Good Clinical Practice guidelines. The institutional review board in Akita University School of Medicine approved this retrospective study (Approval number/ID 2336).

#### Consent for publication

This study was obtained informed consent from all patients.

#### Competing interests

The authors declare that they have no competing interests.

#### Author details

<sup>1</sup>Department of Thoracic Surgery, Akita University Graduate School of Medicine, 1-1-1 Hondo, Akita 010-8543, Japan. <sup>2</sup>Department of Respiratory Medicine, Akita University Graduate School of Medicine, 1-1-1 Hondo, Akita 010-8543, Japan. <sup>3</sup>Department of Clinical Oncology, Akita University Graduate School of Medicine, 1-1-1 Hondo, Akita 010-8543, Japan. <sup>4</sup>Department of Health Environmental Science and Public Health, Akita University Graduate School of Medicine, 1-1-1 Hondo, Akita 010-8543, Japan.

Received: 27 April 2020 Accepted: 29 September 2020

Published online: 08 October 2020

#### References

- Goldstraw P, Chansky K, Crowley J, Rami-Porta R, Asamura H, Eberhardt WE, et al. The IASLC Lung Cancer Staging Project: Proposals for Revision of the TNM Stage Groupings in the Forthcoming (Eighth) Edition of the TNM Classification for Lung Cancer. *J Thorac Oncol*. 2016;11:39–51.



2. Nagai K, Tsuchiya R, Mori T, Tada H, Ichinose Y, Koike T, et al. A randomized trial comparing induction chemotherapy followed by surgery with surgery alone for patients with stage IIIA N2 non-small cell lung cancer (JCOG 9209). *J Thorac Cardiovasc Surg.* 2003;125:254–60.
3. Arriagada R, Auquier A, Burdett S, Higgins JP, Johnson DH, Le Chevalier T, et al. Adjuvant chemotherapy, with or without postoperative radiotherapy, in operable non-small-cell lung cancer: two meta-analyses of individual patient data. *Lancet.* 2010;375:1267–77.
4. NSCLC Meta-analysis Collaborative Group. Preoperative chemotherapy for non-small-cell lung cancer: a systematic review and meta-analysis of individual participant data. *Lancet.* 2014;383:1561–71.
5. Pignon JP, Tribodet H, Scagliotti GV, Douillard JY, Shepherd FA, Stephens RJ, et al. Lung adjuvant cisplatin evaluation: a pooled analysis by the LACE Collaborative Group. *J Clin Oncol.* 2008;26(2):3552–9.
6. Douillard JY, Tribodet H, Aubert D, Shepherd FA, Rosell R, Ding K, et al. Adjuvant cisplatin and vinorelbine for completely resected non-small cell lung cancer: subgroup analysis of the Lung Adjuvant Cisplatin Evaluation. *J Thorac Oncol.* 2010;5(2):220–8.
7. Kris MG, Gaspar LE, Chaft JE, Kennedy EB, Azzoli CG, Ellis PM, et al. Adjuvant systemic therapy and adjuvant radiation therapy for stage I to IIIA completely resected non-small-cell lung cancers: American Society of Clinical Oncology/Cancer Care Ontario Clinical Practice Guideline Update. *J Clin Oncol.* 2017;35(25):2960–74.
8. Ettinger DS, Wood DE, Aisner DL, Akerley W, Bauman J, Chirieac LR, et al. Non-small cell lung cancer, Version 5.2017, NCCN Clinical Practice Guidelines in Oncology. *J Natl Compr Cancer Netw.* 2017;15(4):504–35.
9. Hotta K, Matsuo K, Ueoka H, Kiura K, Tabata M, Tanimoto M. Meta-analysis of randomized clinical trial comparing Cisplatin to Carboplatin in patients with advanced non-small-cell lung cancer. *J Clin Oncol.* 2004;22:3852–9.
10. Molina JR, Adjei AA, Jett JR. Advances in chemotherapy of non-small cell lung cancer. *Chest.* 2006;130(4):1211–9.
11. Wakelee HA, Dahlberg SE, Keller SM, Tester WJ, Gandara DR, Graziano SL, et al. Adjuvant chemotherapy with or without bevacizumab in patients with resected non-small-cell lung cancer (E1505): an open-label, multicentre, randomised, phase 3 trial. *Lancet Oncol.* 2017;18(12):1610–23.
12. Bradbury P, Sivajohanathan D, Chan A, Kulkarni S, Ung Y, Ellis PM. Postoperative adjuvant systemic therapy in completely resected non-small-cell lung cancer: a systematic review. *Clin Lung Cancer.* 2017;18(3):259–273. e8.
13. Hertel LW, Boder GB, Kroin JS, Rinzel SM, Poore GA, Todd GC, et al. Evaluation of the antitumor activity of gemcitabine (2',2'-difluoro-2'-deoxycytidine). *Cancer Res.* 1990;50(14):4417–22.
14. Ohe Y, Ohashi Y, Kubota K, Tamura T, Nakagawa K, Negoro S, et al. Randomized phase III study of cisplatin plus irinotecan versus carboplatin plus paclitaxel, cisplatin plus gemcitabine, and cisplatin plus vinorelbine for advanced non-small-cell lung cancer: Four-arm cooperative study in Japan. *Ann Oncol.* 2007;18(2):317–23.
15. Schiller JH, Harrington D, Belani CP, Langer C, Sandler A, Krook J, et al. Comparison of four chemotherapy regimens for advanced non-small-cell lung cancer. *N Engl J Med.* 2002;346:92–8.
16. Le Chevalier T, Scagliotti G, Natale R, Danson S, Rosell R, Stahel R, et al. Efficacy of gemcitabine plus platinum chemotherapy compared with other platinum containing regimens in advanced non-small-cell lung cancer: A meta-analysis of survival outcomes. *Lung Cancer.* 2005;47:69–80.
17. Rudd RM, Gower NH, Spiro SG, Eisen TG, Harper PG, Littler JA, et al. Gemcitabine plus carboplatin versus mitomycin, ifosfamide, and cisplatin in patients with stage IIIB or IV non-small-cell lung cancer: a phase III randomized study of the London Lung Cancer Group. *J Clin Oncol.* 2005;23:142–53.
18. Sakurai R, Tomizawa Y, Yoshii A, Miura Y, Tsurumaki H, Kaira K, et al. A phase II study of biweekly gemcitabine and carboplatin in completely resected stage IB-IIIa non-small cell lung cancer. *Cancer Chemother Pharmacol.* 2018; 81(1):103–9.
19. Uramoto H, Nakanishi R, Nagashima A, Uchiyama A, Inoue M, Osaki T, et al. A randomized phase II trial of adjuvant chemotherapy with bi-weekly carboplatin plus paclitaxel versus carboplatin plus gemcitabine in patients with completely resected non-small cell lung cancer. *Anticancer Res.* 2010; 30(11):4695–9.
20. Usami N, Yokoi K, Hasegawa Y, Taniguchi H, Shindo J, Yamamoto M, et al. Central Japan Lung Study Group. Phase II study of carboplatin and gemcitabine as adjuvant chemotherapy in patients with completely resected non-small cell lung cancer: a report from the Central Japan Lung Study Group, CJLSG 0503 trial. *Int J Clin Oncol.* 2010;15(6):583–7.
21. Brierley JD, Gospodarowicz MK, Wittekind C. UICC TNM Classification of malignant tumours. 8th ed. New York: Wiley Blackwell; 2017.
22. Eisenhauer EA, Therasse P, Bogaerts J, Schwartz LH, Sargent D, Ford R, et al. New response evaluation criteria in solid tumours: revised RECIST guideline (version 1.1). *Eur J Cancer.* 2009;45:228–47.
23. Douillard JY, Rosell R, De Lena M, Carpagnano F, Ramlau R, Gonz ales-Larriba JL, et al. Adjuvant vinorelbine plus cisplatin versus observation in patients with completely resected stage IB-IIA non-small cell lung cancer (Adjuvant Navelbine International Trialist Association [ANITA]): randomized controlled trial. *Lancet Oncol.* 2006;7:719–27.
24. Strauss GM, Herndon JE 2nd, Maddaus MA, Johnstone DW, Johnson EA, Harpole DH, et al. Adjuvant paclitaxel plus carboplatin compared with observation in stage IB non-small-cell lung cancer: CALGB 9633 with the Cancer and Leukemia Group B, Radiation Therapy Oncology Group, and North Central Cancer Treatment Group Study Groups. *J Clin Oncol.* 2008;26: 5043–51.
25. Ardizzone A, Boni L, Tiseo M, Fossella FV, Schiller JH, Paesmans M, et al. Cisplatin- versus carboplatin-based chemotherapy in first-line treatment of advanced non-small-cell lung cancer: an individual patient data meta-analysis. *J Natl Cancer Inst.* 2007;99(11):847–57.
26. Jiang J, Liang X, Zhou X, Huang R, Chu Z. A meta-analysis of randomized controlled trials comparing carboplatin-based to cisplatin-based chemotherapy in advanced non-small cell lung cancer. *Lung Cancer.* 2007; 57(3):348–58.
27. Goss GD, O'Callaghan C, Lorimer I, Tsao MS, Masters GA, Jett J, et al. Gefitinib versus placebo in completely resected non-small-cell lung cancer: Results of the NCIC CTG BR19 study. *J Clin Oncol.* 2013;31:3320–6.
28. Kimura H, Matsui Y, Ishikawa A, Nakajima T, Yoshino M, Sakairi Y. Randomized controlled phase III trial of adjuvant chemo-immunotherapy with activated killer T cells and dendritic cells in patients with resected primary lung cancer. *Cancer Immunol Immunother.* 2015;64:51–9.
29. Herbst RS, Tsuboi M, John T, Grohe C, Majem M, Goldman JW, et al. Osimertinib as adjuvant therapy in patients (pts) with stage IB–IIIA EGFR mutation positive (EGFRm) NSCLC after complete tumor resection: ADAURA. *J Clin Oncol.* 2020;38 (suppl; abstr LBA5).
30. Kreuter M, Vansteenkiste J, Fischer JR, Eberhardt WE, Zabeck H, Kollmeier J, et al. TREAT investigators. Three-Year Follow-Up of a Randomized Phase II Trial on Refinement of Early-Stage NSCLC Adjuvant Chemotherapy with Cisplatin and Pemetrexed versus Cisplatin and Vinorelbine (the TREAT Study). *J Thorac Oncol.* 2016;11(1):85–93.
31. Kato H, Ichinose Y, Ohta M, Hata E, Tsubota N, Tada H, et al. A randomized trial of adjuvant chemotherapy with uracil-tegafur for adenocarcinoma of the lung. *N Engl J Med.* 2004;350(17):1713–21.

## Publisher's Note

Springer Nature remains neutral with regard to jurisdictional claims in published maps and institutional affiliations.

**Ready to submit your research? Choose BMC and benefit from:**

- fast, convenient online submission
- thorough peer review by experienced researchers in your field
- rapid publication on acceptance
- support for research data, including large and complex data types
- gold Open Access which fosters wider collaboration and increased citations
- maximum visibility for your research: over 100M website views per year

**At BMC, research is always in progress.**

Learn more [biomedcentral.com/submissions](https://biomedcentral.com/submissions)

