

CORRECTION

Open Access



Correction: lncRNA-PLACT1 sustains activation of NF- κ B pathway through a positive feedback loop with I κ B α /E2F1 axis in pancreatic cancer

Xiaofan Ren^{1,2†}, Changhao Chen^{2,3*†}, Yuming Luo^{4†}, Mingyang Liu⁵, Yuting Li^{1,2}, Shangyou Zheng⁴, Huilin Ye⁴, Zhiqiang Fu⁴, Min Li^{5*}, Zhihua Li^{1,2*} and Rufu Chen^{6*}

Correction: Mol Cancer 19, 35 (2020)
<https://doi.org/10.1186/s12943-020-01153-1>

Following publication of the original article [1], errors were identified in the images presented in Figs. 2 and 6; specifically:

Fig. 2K: overlap was found between the Transwell migration assay and invasion assay in si-PLACT1#1

group of AsPC-1 cells; the representative image of the invasion assay in si-PLACT1#1 group of AsPC-1 cells has been replaced with the correct image

The original article can be found online at <https://doi.org/10.1186/s12943-020-01153-1>.

[†]Xiaofan Ren, Changhao Chen and Yuming Luo contributed equally to this work.

*Correspondence: chenchh53@mail.sysu.edu.cn; Min-Li@ouhsc.edu; lzhdoct@163.com; chenrf63@163.com

² Guangdong Provincial Key Laboratory of Malignant Tumor Epigenetics and Gene Regulation, Sun Yat-sen Memorial Hospital, State Key Laboratory of Oncology in South China, 107th Yanjiangxi Road, Yuexiu District, Guangzhou 510120, Guangdong province, People's Republic of China

³ Department of Urology, Sun Yat-sen Memorial Hospital, State Key Laboratory of Oncology in South China, 107th Yanjiangxi Road, Yuexiu District, Guangzhou, Guangdong province 510120, People's Republic of China

⁵ Department of Medicine, Department of Surgery, the University of Oklahoma Health Sciences Center, 975 NE 10th Street, BRC 1262A, Oklahoma City, OK 73104, USA

⁶ Department of General Surgery, Guangdong Provincial People's Hospital, Guangdong Academy of Medical Sciences, 106th of 2nd Zhongshan Road, Yuexiu District, Guangzhou, Guangdong Province 510080, People's Republic of China

Full list of author information is available at the end of the article



© The Author(s) 2022. **Open Access** This article is licensed under a Creative Commons Attribution 4.0 International License, which permits use, sharing, adaptation, distribution and reproduction in any medium or format, as long as you give appropriate credit to the original author(s) and the source, provide a link to the Creative Commons licence, and indicate if changes were made. The images or other third party material in this article are included in the article's Creative Commons licence, unless indicated otherwise in a credit line to the material. If material is not included in the article's Creative Commons licence and your intended use is not permitted by statutory regulation or exceeds the permitted use, you will need to obtain permission directly from the copyright holder. To view a copy of this licence, visit <http://creativecommons.org/licenses/by/4.0/>. The Creative Commons Public Domain Dedication waiver (<http://creativecommons.org/publicdomain/zero/1.0/>) applies to the data made available in this article, unless otherwise stated in a credit line to the data.

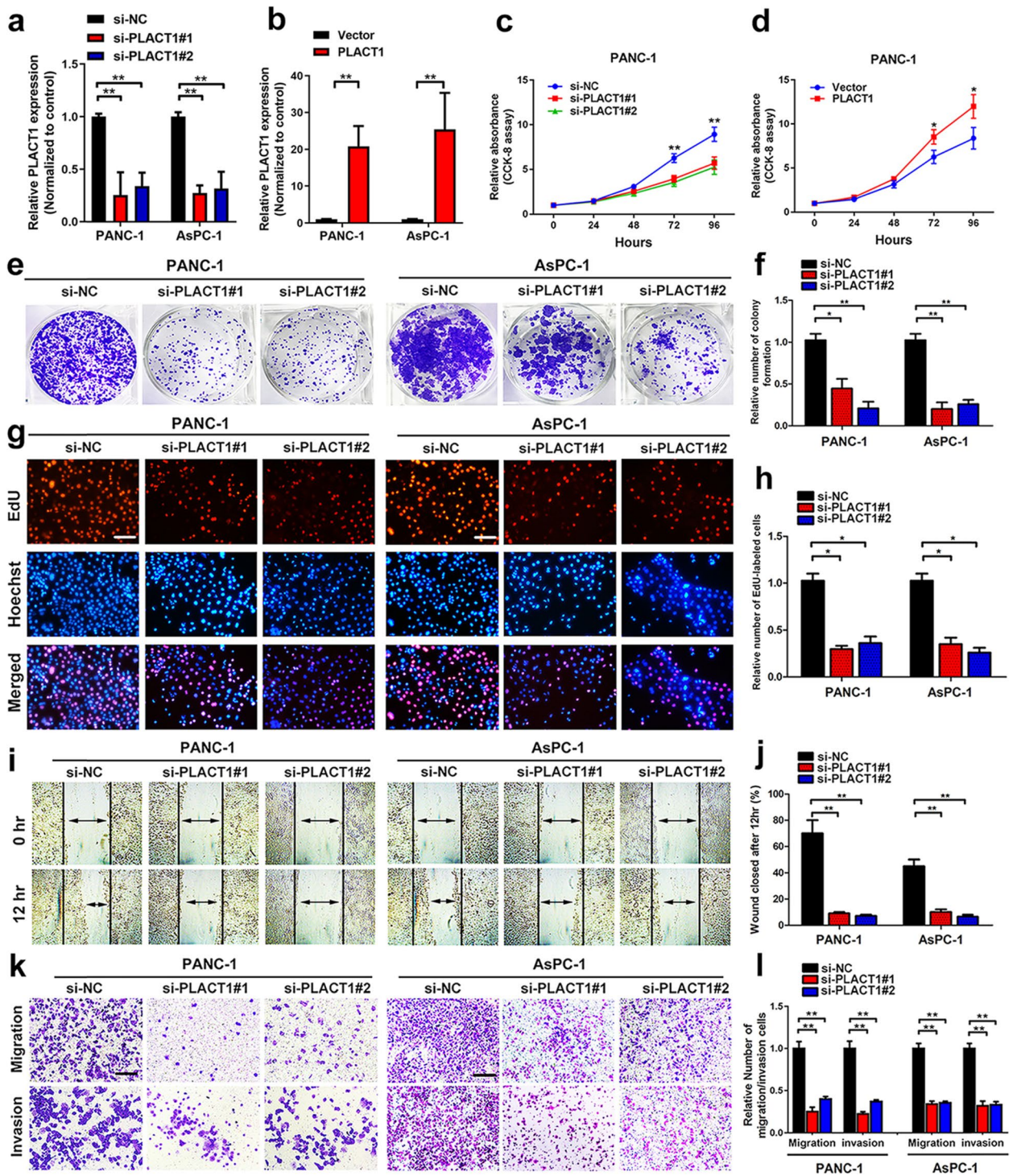
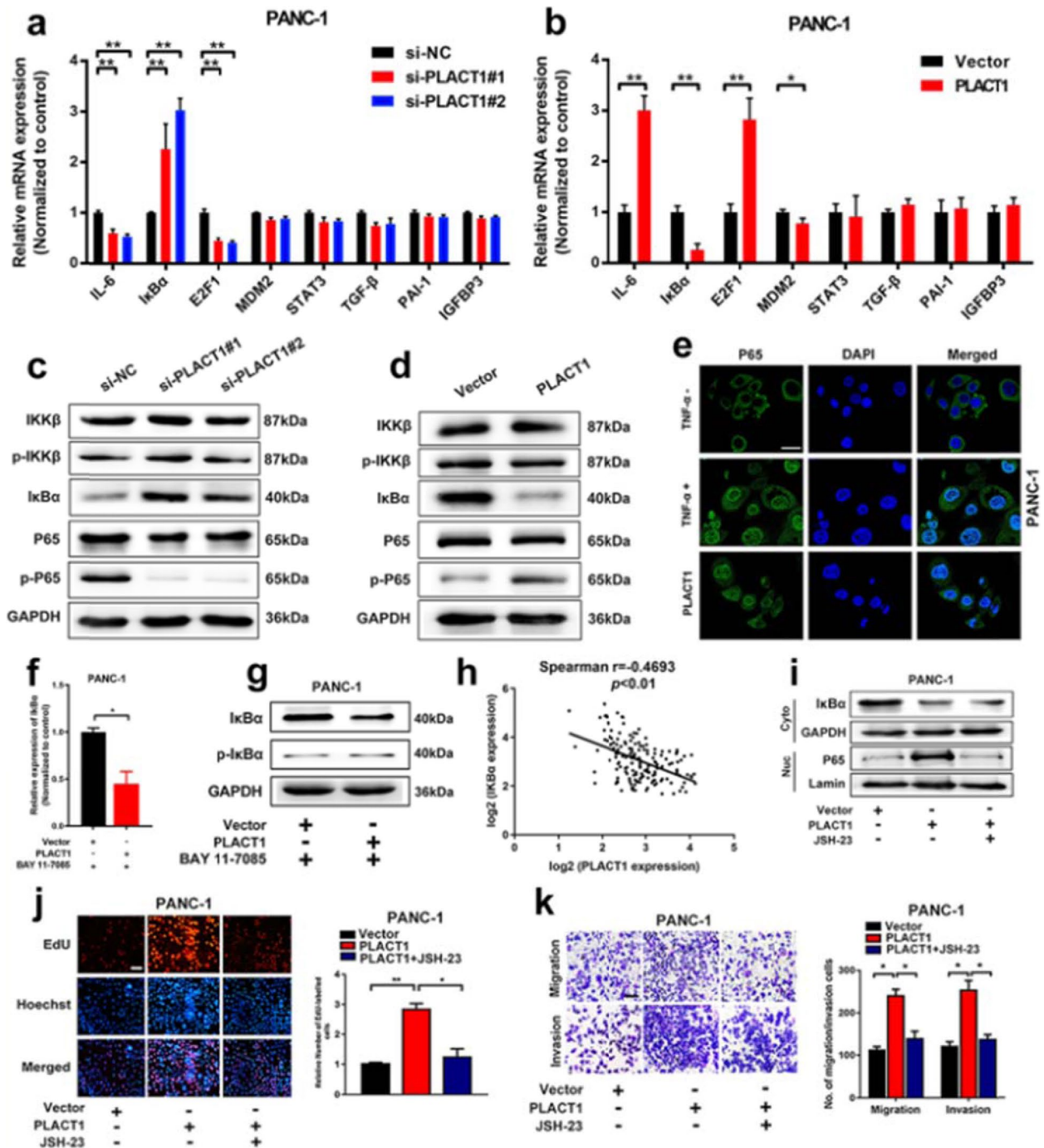


Fig. 6K: overlap was found between the Transwell invasion assay Vector group and PLACT1+JSH-23 group; the correct image is now used (column 1, row 2)



The corrected figures are provided here. The correction does not have any effect on the results or conclusions of the paper. The original article has been corrected.

Author details

¹Department of Medical Oncology, Sun Yat-sen Memorial Hospital, State Key Laboratory of Oncology in South China, 107th Yanjiangxi Road, Yuexiu District, Guangzhou, Guangdong province 510120, People's Republic of China.

²Guangdong Provincial Key Laboratory of Malignant Tumor Epigenetics and Gene Regulation, Sun Yat-sen Memorial Hospital, State Key Laboratory of Oncology in South China, 107th Yanjiangxi Road, Yuexiu District, Guangzhou 510120, Guangdong province, People's Republic of China. ³Department of Urology, Sun Yat-sen Memorial Hospital, State Key Laboratory of Oncology in South China, 107th Yanjiangxi Road, Yuexiu District, Guangzhou, Guangdong province 510120, People's Republic of China. ⁴Department of Hepatopancreatobiliary Surgery, Sun Yat-sen Memorial Hospital, 107th Yanjiangxi Road, Yuexiu District, Guangzhou 510120, Guangdong province, People's Republic of China. ⁵Department of Medicine, Department of Surgery, the University of Oklahoma Health Sciences Center, 975 NE 10th Street, BRC 1262A, Oklahoma City, OK 73104, USA. ⁶Department of General Surgery, Guangdong Provincial People's Hospital, Guangdong Academy of Medical Sciences, 106th of 2nd Zhongshan Road, Yuexiu District, Guangzhou, Guangdong Province 510080, People's Republic of China.

Published online: 10 June 2022

Reference

1. Ren X, Chen C, Luo Y, et al. lncRNA-*PLACT1* sustains activation of NF- κ B pathway through a positive feedback loop with I κ B α /E2F1 axis in pancreatic cancer. *Mol Cancer*. 2020;19:35. <https://doi.org/10.1186/s12943-020-01153-1>.

Ready to submit your research? Choose BMC and benefit from:

- fast, convenient online submission
- thorough peer review by experienced researchers in your field
- rapid publication on acceptance
- support for research data, including large and complex data types
- gold Open Access which fosters wider collaboration and increased citations
- maximum visibility for your research: over 100M website views per year

At BMC, research is always in progress.

Learn more biomedcentral.com/submissions

