

RESEARCH

Open Access

Selection of suitable hand gestures for reliable myoelectric human computer interface

Maria Claudia F Castro^{1*}, Sridhar P Arjunan² and Dinesh K Kumar²

* Correspondence:

mclaudia@fei.edu.br

¹Electrical Engineering Department,
Centro Universitário da FEI, Av.
Humberto de A. C. Branco, 3.972,
São Bernardo do Campo, SP
09850-901, Brazil

Full list of author information is
available at the end of the article

Abstract

Background: Myoelectric controlled prosthetic hand requires machine based identification of hand gestures using surface electromyogram (sEMG) recorded from the forearm muscles. This study has observed that a sub-set of the hand gestures have to be selected for an accurate automated hand gesture recognition, and reports a method to select these gestures to maximize the sensitivity and specificity.

Methods: Experiments were conducted where sEMG was recorded from the muscles of the forearm while subjects performed hand gestures and then was classified off-line. The performances of ten gestures were ranked using the proposed Positive–Negative Performance Measurement Index (PNM), generated by a series of confusion matrices.

Results: When using all the ten gestures, the sensitivity and specificity was 80.0% and 97.8%. After ranking the gestures using the PNM, six gestures were selected and these gave sensitivity and specificity greater than 95% (96.5% and 99.3%); Hand open, Hand close, Little finger flexion, Ring finger flexion, Middle finger flexion and Thumb flexion.

Conclusion: This work has shown that reliable myoelectric based human computer interface systems require careful selection of the gestures that have to be recognized and without such selection, the reliability is poor.

Keywords: Hand gesture, Finger flexion, Myoelectric signal, Frequency domain, Pattern recognition

Introduction

Powered prosthetic hands are used by trans-radial amputee and may also find applications for the elderly and frail people. Prosthetic hand control requires automatic recognition of the user commands for flexion/extension of the fingers and hand. Myoelectric based proportional control of the prosthetic hands provides the user with the natural and intuitive control of the device and is the desired option. These systems record surface electromyogram (sEMG) from the residual muscles of the forearm and classify the signals to identify the user command. It is important that such a system is reliable, non-invasive, and simple with small number of electrodes that can be used without requiring an expert to mount the system [1-3].

Many hand gestures require simultaneous contraction of multiple overlapping muscles and this makes it difficult to directly map the surface electromyogram (sEMG) to different hand and finger gestures. Thus, systems that have been reported in literature estimate the hand and finger commands by training the system for the user with a limited number of commands such as individual finger gestures [4-11] or some functional

hand gestures [12-19]. Number of studies have analyzed the recordings to obtain the most suitable signal features and classification techniques. In general, the recordings are obtained from the forearm of the healthy subjects, and the technology so developed is translated for the amputee patients. After the signal classification technique is evaluated, the systems are customized for the individual users because of the large differences between people. However, in none of these studies, the selection of the various gestures have been examined and justified. Earlier works appear to select the gestures based on user requirements [28] but without any consideration to reducing error or improving the sensitivity and specificity. This limits the overall functionality of the prosthetic device and may also compromise on the overall reliability.

This work has investigated the relationship between the set of hand-gestures and the sensitivity and specificity of automated hand-gesture recognition, has observed that it is essential to carefully select these gestures for an accurate system and reports a method to select the most suitable gestures. From literature, there appear to be ten commonly used hand gestures for prosthetic hand and other similar applications; five individual finger gestures and five functional hand gestures. This study analyzed the sensitivity, specificity and accuracy for the recognition of these gestures, and developed an iterative technique to identify those set of gestures that give suitable sensitivity and specificity. A standard myoelectric classification system was developed based on commonly used signal recording, analysis and classification methods and used to conduct the experiments. Confusion matrix based index was developed to identify the suitable set of gestures by ranking these gestures based on the misclassification caused due to them.

The main outcome of this work is the demonstration of the method for selecting the suitable gestures for ensuring high sensitivity and selectivity, which are essential for controlling the prosthetic hand device. The significance of this study is the development of new technique to obtain the subset of most suitable hand-gestures from the larger set by ranking based on the confusion matrix. This would provide the suitable performance for classifying the hand-gestures. The paper uses existing signal processing, feature selection and classification methods of sEMG that have been reported in literature.

Materials and methods

Subjects

Experiments were conducted after receiving ethics approval from research ethics committee of São Judas Tadeu University (COEP - USJT - No.088/2011), and in accordance with the Helsinki accord (modified 2004). Four volunteers (average age 19), with no neurological or muscular disease or injury, participated in this study. They were given the plain language statement that explained the experiment and possible risk and the protocol was also explained to them orally. Verbal and written consent was obtained prior to conducting experiments.

Equipment and recording procedures

Surface EMG signals were recorded using the PowerLab 16/30 (AdInstruments), with 1000 Hz sampling rate and 20–500 Hz filtering range, using eighth-order, switched-capacitance, Bessel type filter. Disposable adhesive electrodes from Medtrace in bipolar

configuration with 20 mm inter-electrode distance were used. Five pairs of electrodes were placed based on the commonly accepted low density electrode placement for hand based myoelectric systems [20]. The preparation and placement of the electrodes was based on SENIAM recommendation [21] and were placed to record from forearm muscles: *flexor digitorum superficialis*, *palmaris longus*, *abductor pollicis longus*, *extensor digiti minimi* and *extensor communis digitorum*. A common ground electrode was placed on the radial styloid process (Figure 1).

Experiment protocol

The participants were seated with their forearms rested and arms flexed with elbow at 90°. A total of ten gestures were considered, which can be broadly considered as five finger and five hand grip flexion gestures, and these are shown in Figures 2 and 3. The five functional grips were; (i) Neutral position, (ii) Pinch, (iii) Tripod pinch with index, middle finger and thumb, (iv) Hand close and (v) Hand open.

Verbal and visual cue were given to the participants for them to perform the different gestures. The duration of each gesture was more than 1 second, and the movements were repeated thirty times, with the order of the movements being random. Participants were requested to perform the gestures at their comfortable pace and to rest between each trial.

Data analysis

Power Spectral Density Average (PSD-Av) was selected as the signal feature because this has been considered to be robust and suitable for easy implementation [22]. This was computed for each gesture with a window of 1 second and for all the five sEMG channels. This resulted in a vector with five PSD-Av values for each gesture example. Data analysis was performed for each subject individually and averaged for the four

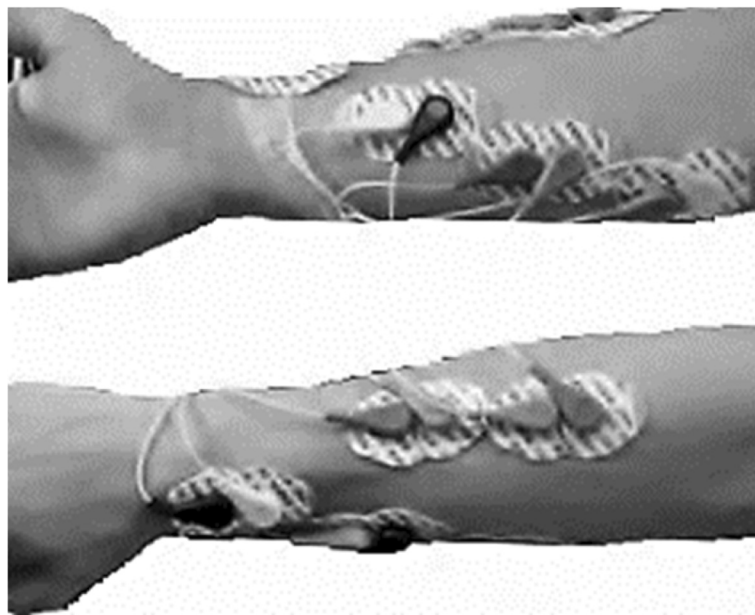
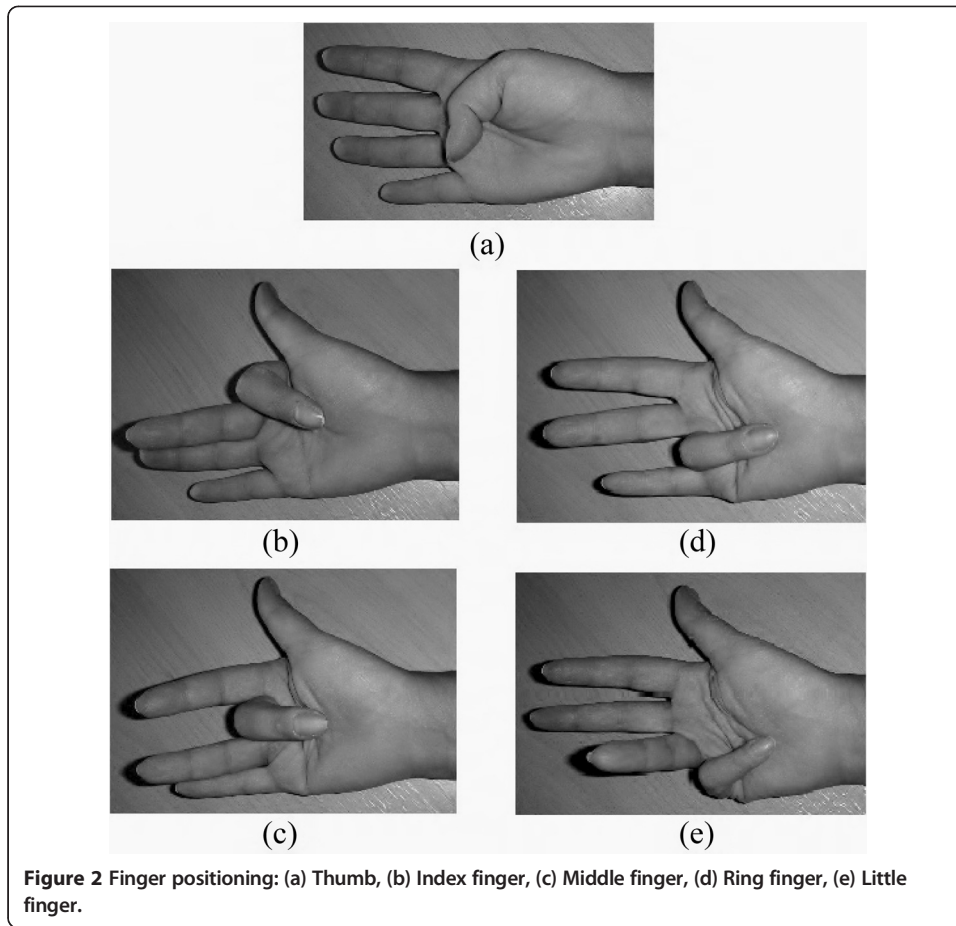


Figure 1 Electrode positioning.

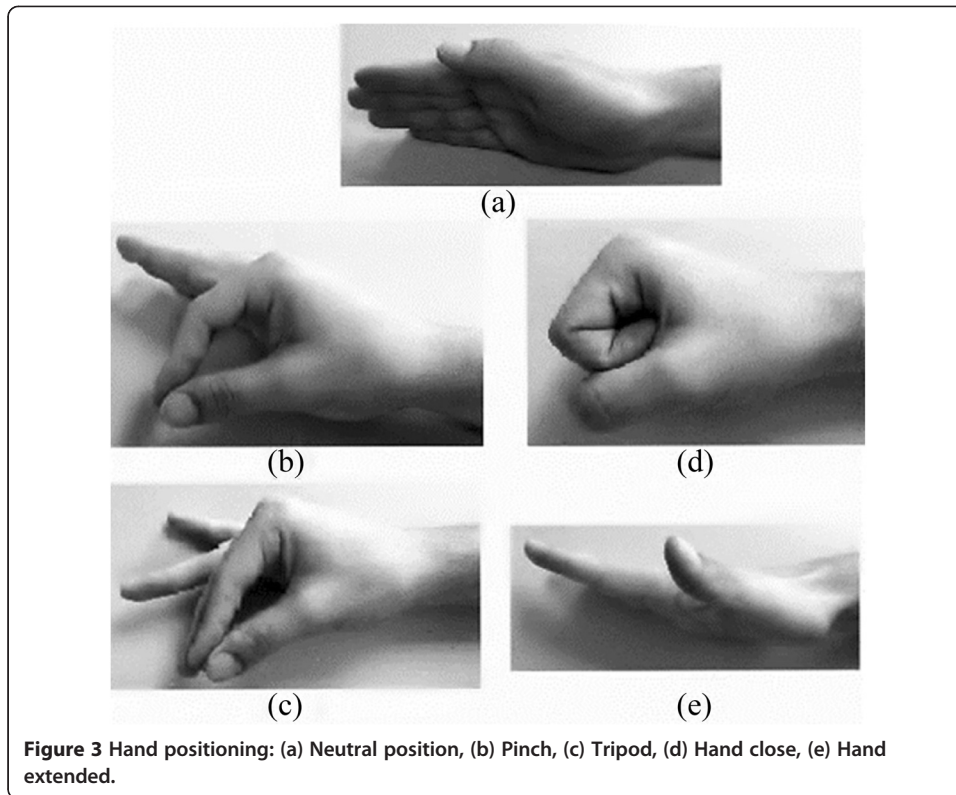


subjects. This was in line with the standard protocol used for myoelectric prosthetic control, where the system is custom trained for each user.

Leave one our cross-validation technique has been well accepted for stable algorithms and databases. The advantage of using leave one out cross validation method is that it is suitable for generalization of the results by using different sets of training and testing datasets. This validation method tests the training and testing relationship for each possible set combination and thus overcomes any possible bias in the classification [23]. Using leave one out approach, the thirty examples were divided in two sets; training and test datasets. The PSD-Av for the five channels was the input to a Fisher’s Linear Discriminant Classifier [24,25]. This was trained for each person separately and for the 10 classes. Using leave one out approach, this was repeated thirty times for each subject. Average accuracy, sensitivity and specificity were calculated and the confusion matrix was generated. The rows correspond to the priori, the columns are the predictions and the diagonal corresponds to the correct predictions [26,27].

The average accuracy is A_{CC} , and is the proportion of correct prediction:

$$A_{CC} = \frac{\sum_{i=1}^g C_{ii}}{\sum_{i=1}^g \sum_{j=1}^g C_{ij}} \tag{1}$$



where, $C_{i,j}$ corresponds to the Confusion Matrix element in row i and column j while g is the total number of classes.

Measurement of the error or accuracy is not sufficient to determine the suitable class because these do not consider the misclassifications, and there can be systematic error bias [26] and hence an approach that considered the false negatives and false positives was proposed. A new method has been developed that identifies the least suitable hand-gestures based on the ranking obtained from the confusion matrix using a combination of false-negatives and false positives.

The Sensitivity refers to the ability of the test to correctly identify the condition. Thus, in the current example:

$$Se = \frac{True\ Positive}{True\ Positive + False\ Negative} \tag{2}$$

The Specificity corresponds to the test ability to exclude a condition correctly. In the present example, it can be defined by:

$$Sp = \frac{True\ Negatives}{True\ Negatives + False\ Positives} \tag{3}$$

The gestures that are most suitable are the ones that have high authentic correct and least false identification. For this aim, the results were used to populate the confusion matrix. In this proposed technique, the confusion matrix was multiplied with a diagonal matrix where all the diagonal elements were unity, and the other elements were

Table 2 Positive–Negative Performance Measurement Index ranking each class based on the Confusion Matrix of the 10-classes

Classes		PNM
1	Hand Open	0.97
2	Ring	0.83
3	Little	0.83
4	Hand Close	0.68
5	Index	0.57
6	Thumb	0.56
7	Pinch	0.50
8	Middle	0.49
9	Tripod	0.41
10	Neutral	0.19

diagonal matrix elements show the number of times the class was correctly identified. The last column lists the percentage accuracy for each class.

Table 1 shows the confusion matrix for the ten gestures, along with the number of FPP and FNP as defined before. Table 2 shows the PNM (equation 4) of all the classes where the classes have been ranked according these values.

From Table 1, it is observed that the average accuracy is 80.0%, making such a system unsuitable for most prosthetic applications. After ranking the gestures in term of the PNM (Table 2), the ‘Neutral’ gesture was removed and the analysis repeated. After removing this class, the average accuracy of balance 9-classes improved to 84.8% and the new ranking shown in Table 3.

In Table 3, the Tripod has the lowest rank. Removing this and repeating the analysis improved the accuracy to 89.1% and the new ranking is shown in Table 4. The lowest ranked gesture in this table was the pinch, and removing this improved the accuracy to 93.7%. The resultant confusion matrix is shown in Table 5, while the PNM values and the ranking of the gestures shown in Table 6. Repeating the process once again resulted in the list of best 6 gestures (Table 7); Hand open, Ring finger flexion, Hand closed, Thumb flexion, Little finger flexion, and Middle finger flexion. The average accuracy of the best six hand gestures is 96.5% (Table 8).

Table 3 Positive–Negative Performance Measurement Index ranking each class based on the Confusion Matrix of the 9-classes

Classes		PNM
1	Hand Open	0.97
2	Ring	0.85
3	Thumb	0.83
4	Little	0.79
5	Middle	0.68
6	Hand Close	0.64
7	Index	0.61
8	Pinch	0.55
9	Tripod	0.36

Table 6 Positive–Negative Performance Measurement Index ranking each class based on the Confusion Matrix of the 7-classes

Classes		PNM
1	Hand Open	0.98
2	Ring	0.93
3	Thumb	0.92
4	Little	0.87
5	Middle	0.83
6	Hand Close	0.80
7	Index	0.78

the desired gestures between applications, this work has highlighted the need for selecting the gestures based on the required system sensitivity and specificity.

Conclusion

The work has found that when a set of 10 hand gestures; five individual finger flexion and five functional hand grips, were considered, the accuracy, sensitivity and specificity were 80.0%, 80.0% and 97.8% respectively (Table 1). With the same set of signal features and classification techniques, and an appropriate selection of gestures using PNM iterative method, the accuracy, sensitivity and specificity improved to 96.5%, 96.5% and 99.3%.

The novelty of this work is the development of a method to select the most suitable hand gestures that improve the sensitivity and specificity of the myoelectric hand gesture recognition system for safer prosthetic hand control. The work has used well established sEMG analysis and classification techniques, which was chosen as an example, and based on favorable literature review, and the authors do not take any credit for this.

This work has shown that it is important to select the set of hand-gestures that will be accurately recognized for a reliable myoelectric based prosthetic hand or other human computer interface systems. While the selection of the gestures is based on the specific application and may be different for different sEMG analysis and classification techniques, the outcome of this work shows that the selection should be performed based on the ranking of the sensitivity and specificity. This would identify those gestures that would lead to high error and thus should be discarded. In this study from an initial set of ten hand gestures, which included five finger flexion and five functional hand gestures, a set of six gestures were identified which gave the sensitivity and specificity greater than 95%.

Table 7 Positive–Negative Performance Measurement Index ranking each class based on the Confusion Matrix of the 6-classes

Classes		PNM
1	Hand Open	0.97
2	Ring	0.95
3	Hand Close	0.93
4	Thumb	0.93
5	Little	0.91
6	Middle	0.88

Table 8 Confusion Matrix for the most feasible 6-classes

Classes		1	2	3	4	5	6	Acc %
1	Thumb	116	1	0	0	3	0	97
2	Middle	1	115	1	2	1	0	96
3	Ring	0	2	118	0	0	0	98
4	Little	1	5	2	112	0	0	93
5	Hand Close	1	1	1	0	117	0	98
6	Hand Open	2	1	0	0	1	116	97
	Average Accuracy							96.5
	Average Sensitivity							96.5
	Average Specificity							99.3

This work has demonstrated the principle for selecting appropriate gestures based on the accuracy, sensitivity and specificity of myoelectric based hand gesture recognition. While the hypothesis has been tested using Power Spectral Density Average (PSD-Av) and linear classifier, for generalizing this principle, this hypothesis has to be tested for other features and classifiers. This may result in different number of gestures that provide the suitable sensitivity and specificity.

Abbreviations

sEMG: Surface electromyography; PSD: Power spectral density; PSD-Av: Power spectral density average; PNM: Positive – Negative Performance Measure Index; FNP: False negative predictions; FPP: False positive predictions; SENIAM: Surface ElectroMyoGraphy for the non-invasive assessment of muscle.

Competing interests

The authors declare that they have no competing interests.

Authors' contributions

MCFC conducted the experiments and data analysis. DKK planned and wrote the draft of the paper. SPA reviewed the work. All authors read and approved the final manuscript.

Acknowledgment

The authors would like to thank FEI, FAPESP, and RMIT University for the support.

Author details

¹Electrical Engineering Department, Centro Universitário da FEI, Av. Humberto de A. C. Branco, 3.972, São Bernardo do Campo, SP 09850-901, Brazil. ²Biosignal Lab., School of Electrical and Computer Engineering, RMIT University, GPO Box 2476, Melbourne, VIC 3001, Australia.

Received: 25 November 2014 Accepted: 23 March 2015

Published online: 09 April 2015

References

- Li, G. Electromyography Pattern-Recognition-Based Control of Powered Multifunctional Upper-Limb Prostheses. In: Mizrah, J. (Ed.). *Advances in Applied Electromyography*, InTech (2011). <http://www.intechopen.com/books/advances-in-applied-electromyography/electromyography-pattern-recognition-based-control-of-powered-multifunctional-upper-limb-prostheses>
- Scheme E, Englehart K. Electromyogram pattern recognition for control of powered upper-limb prostheses: State of the art and challenges for clinical use. *J Rehabil Res Dev.* 2011;48(6):643–60.
- Muceli S, Farina D. Simultaneous and proportional estimation of hand kinematics from emg during mirrored movements at multiple degrees-of-freedom. *IEEE Transaction on Neural Systems and Rehabilitation Engineering.* 2012;20(3):371–8.
- Zhao Z, Chen X, Zhang X, Yang J, Tu Y. Study on Online Gesture sEMG Recognition," in *Advanced Intelligent Computing Theories and Applications*. In: *Proceedings of the Third International Conference on Intelligent Computing*. 2007. p. 1257–65.
- Khezri M, Jahed M. Real-time intelligent pattern recognition algorithm for surface EMG signals. *Biomed Eng Online.* 2007;6(45):1–12. [Online]. Available: <http://www.pubmedcentral.nih.gov/articlerender.fcgi?artid=2222669&tool=pmcentrez&rendertype=abstract>.
- Singh, VP, Kumar, DK. Classification of low-level finger contraction from single channel surface emg. In: *Proceedings of the 30th Annual International Conference of the IEEE EMBS, Vancouver, British Columbia, Canada, 2900 – 2903 (2008)*.

7. Andrews, A, Morin, E, McLean, L. Optimal electrode configurations for finger movement classification using EMG. In: Proceedings 31st Annual International Conference of the IEEE EMBS, Minneapolis, Minnesota, USA, 2987–2990 (2009).
8. Tenore FVG, Ramos A, Fahmy A, Acharya S, Etienne-Cummings R, Thakor NV. Decoding of individuated finger movements using surface electromyography. *IEEE Trans Biomed Eng.* 2009;56(5):427–1434.
9. Ishikawa, K, Toda, M, Sakurazawa, S, Akita, J, Kondo, K, Nakamura, Y. Finger motion classification using surface-electromyogram signals. In: Proceedings of the 9th IEEE/ACIS International Conference on Computer Information Science, Kaminoyama, Japan, 37 – 42 (2010).
10. Khushaba RN, Kodagoda S, Takruri M, Dissanayake G. Toward improved control of prosthetic fingers using surface electromyogram (EMG) signals. *Expert Systems with Applications.* 2012;39(12):10 731–8.
11. Kumar DK, Arjunan SP, Singh VP. Towards identification of finger flexions using single channel surface electromyography able bodied and amputee subjects. *J Neuroeng Rehabil.* 2013;10:50:1–7. [Online]. Available: <http://www.jneuroengrehab.com/content/10/1/50>.
12. Ferguson S, Dunlop, GR. Grasp Recognition from Myoelectric Signals. In: Australasian Conference on Robotics and Automation, Auckland, New Zealand, Nov., 27 – 29 (2002).
13. Chu J, Lee Y. Conjugate-prior-penalized learning of Gaussian mixture models for multifunction myoelectric hand control. *IEEE Transactions on Neural Systems and Rehabilitation Engineering.* 2009;17(3):287–97.
14. Li G, Schultz AE, Kuiken TA. Quantifying pattern recognition based myoelectric control of multifunctional transradial prostheses. *IEEE Transactions on Neural Systems and Rehabilitation Engineering.* 2010;18(2):185–92.
15. Khushaba RN, Al-Ani A, Al-Jumaily A. Orthogonal fuzzy neighborhood discriminant analysis for multifunction myoelectric hand control. *IEEE Trans Biomed Eng.* 2010;57(6):1410–9.
16. Lorrain T, Jiang N, Farina D. Influence of the training set on the accuracy of surface EMG classification in dynamic contractions for the control of multifunction prostheses. *J Neuroeng Rehabil.* 2011;8(25):1–8. [Online]. Available: <http://www.jneuroengrehab.com/content/8/1/25>.
17. Wang N, Chen Y, Zhang X. The recognition of multi-finger prehensile postures using LDA. *Biomed Signal Process Control.* 2013;8:706–12.
18. Chen X, Wang ZJ. Pattern recognition of number gestures based on a wireless surface EMG system. *Biomed Signal Process Control.* 2013;8:184–92.
19. Phinyomark A, Quaine F, Charbonnier S, Serviere C, Tarpin-Bernard F, Laurillau Y. EMG feature evaluation for improving myoelectric pattern recognition robustness. *Expert Systems with Applications.* 2013;40:4832–40.
20. Zipp P. Recommendations for the Standardization of Lead Positions in Surface Electromyography. *Eur J Appl Physiol.* 1982;50:41–54.
21. Seniam. Seniam recommendations, [Online]. Available: <http://www.seniam.org>, (1996).
22. Rojas-Martínez M, Mañanas, MA, Alonso, JF. High-density surface EMG maps from upper-arm and forearm muscles. *J Neuroeng Rehabil.* 2012;9:85 [Online]. Available: <http://www.jneuroengrehab.com/content/9/1/85>.
23. Kearns M, Ron D. Algorithm Stability and Sanity Check for Leave One-Out Cross Validation. *Neural Comput.* 1999;11(6):1427–53.
24. Castro, MCF. Hand Gesture Recognition for the Control of an Exoskeleton. In: Proceedings of the 4th ISSNIP – IEEE Biosignals and Biorobotics Conference (BRC 2013), Rio de Janeiro, Brazil, 1–5 (2013).
25. Du, S, Vuskovic, M. Temporal vs. Spectral Approach to Feature Extraction from Prehensile EMG Signals, In: IEEE International Conference on Information Reuse and Integration, Las Vegas, EUA, 344–350 (2004).
26. Makhtar M, Neagu DC, Ridley MJ. Comparing Multi-class Classifiers: On the Similarity of Confusion Matrices for Predictive Toxicology Applications. In: Yin H, Wang W, Rayward-Smith V, editors. *Intelligent Data Engineering and Automated Learning - Lecture Notes in Computer Science*, vol. 6936. 2011. p. 252–61.
27. Lalkhen AG, McCluskey A. Clinical Tests: Sensitivity and Specificity. *Continuing Education in Anesthesia, Critical Care and Pain.* 2008;8(6):221–3.

**Submit your next manuscript to BioMed Central
and take full advantage of:**

- Convenient online submission
- Thorough peer review
- No space constraints or color figure charges
- Immediate publication on acceptance
- Inclusion in PubMed, CAS, Scopus and Google Scholar
- Research which is freely available for redistribution

Submit your manuscript at
www.biomedcentral.com/submit

