


ORIGINAL INVESTIGATION

Open Access



The opposing trends of body mass index and blood pressure during 1977–2020; nationwide registry of 2.8 million male and female adolescents

Boris Fishman^{1,2,3,4}, Yair Zloof^{1,3}, Omri Orr^{1,5}, Avishai M. Tsur^{1,3,6}, Ariel Furer^{1,2,3}, Ma'ayan Omer Gilon^{1,3}, Gabriel Chodick^{3,7}, Adi Leiba^{8,9}, Estela Derazne³, Dorit Tzur¹, Arnon Afek^{3,10}, Ehud Grossman^{3,11} and Gilad Twig^{1,3,12*} 

Abstract

Background: Elevated blood pressure among adolescents has been shown to be associated with future adverse cardiovascular outcomes and early onset diabetes. Most data regarding systolic and diastolic blood pressure trends are based on surveys of selected populations within 10–20-year periods. The goal of this study was to characterize the secular trend of blood pressure given the rising prevalence of adolescent obesity.

Methods: This nationwide population-based study included 2,785,515 Israeli adolescents (41.6% females, mean age 17.4 years) who were medically evaluated and whose weight, height and blood pressure were measured, prior to mandatory military service between 1977 and 2020. The study period was divided into 5-year intervals. Linear regression models were used to describe the P for trend along the time intervals. Analysis of covariance was used to calculate means of blood pressure adjusted for body mass index.

Results: During the study period, the mean body mass index increased by 2.1 and 1.6 kg/m² in males and females, respectively (P for trend < 0.001 in both sexes). The mean diastolic blood pressure decreased by 3.6 mmHg in males and by 2.9 mmHg in females (P < 0.001 in both sexes). The mean systolic blood pressure increased by 1.6 mmHg in males and decreased by 1.9 mmHg in females. These trends were also consistent when blood pressure values were adjusted to body mass index.

Conclusion: Despite the increase in body mass index over the last four decades, diastolic blood pressure decreased in both sexes while systolic blood pressure increased slightly in males and decreased in females.

Keywords: Systolic blood pressure, Diastolic blood pressure, Hypertension, Body Mass Index, Obesity, Adolescents

Background

Elevated blood pressure (BP) among the general population is a leading contributor to cardiovascular morbidity and mortality [1, 2]. A number of studies have reported associations of adolescent elevated BP with adult hypertension and with renal and cardiovascular morbidity and mortality later in life [3–6]. Furthermore, adolescent

*Correspondence: Gilad.Twig@gmail.com

¹² Institute of Endocrinology, Sheba Medical Center, Tel Hashomer, Ramat Gan, Israel

Full list of author information is available at the end of the article



© The Author(s) 2021. **Open Access** This article is licensed under a Creative Commons Attribution 4.0 International License, which permits use, sharing, adaptation, distribution and reproduction in any medium or format, as long as you give appropriate credit to the original author(s) and the source, provide a link to the Creative Commons licence, and indicate if changes were made. The images or other third party material in this article are included in the article's Creative Commons licence, unless indicated otherwise in a credit line to the material. If material is not included in the article's Creative Commons licence and your intended use is not permitted by statutory regulation or exceeds the permitted use, you will need to obtain permission directly from the copyright holder. To view a copy of this licence, visit <http://creativecommons.org/licenses/by/4.0/>. The Creative Commons Public Domain Dedication waiver (<http://creativecommons.org/publicdomain/zero/1.0/>) applies to the data made available in this article, unless otherwise stated in a credit line to the data.

elevated BP was found to promote early onset type 2 diabetes mellitus [5].

Weight status is a key determinant of BP in adolescents [7]. Consistent increases have been shown in childhood and adolescent obesity in most Western countries [8, 9], including Israel and the US, where adolescent obesity has nearly tripled over the last decades [10, 11]. Most relevant studies in Western countries reported decreases over the years in diastolic BP (DBP), and to a lesser extent, in systolic BP (SBP) [12–18]. Those studies were based on relatively small samples of wide age range, including both pediatric and adolescent populations. The aim of this study was to describe secular trends during 44 years, of measured SBP and DBP, while accounting for the trend in body mass index (BMI), among 2.78 million adolescents screened at age 17 years.

Methods

Databases and study population

One year prior to mandatory military service, usually at age 16–19 years, male and female Israeli adolescents are called to regional conscription centers for medical evaluation. The current study comprised adolescents examined during 1977–2020, regardless of their fitness for military service. Orthodox and ultra-orthodox Jewish women are not obligated to serve, and therefore are under-represented [19]. We excluded adolescents with missing values of BP or BMI data (0.2% in total). Figure 1 presents the study design. The Institutional Review

Board of the Israel Defense Forces Medical Corps approved the study.

Data collection at regional military recruitment centers

The medical assessment included review of the examinee’s medical history, an interview with a physician, physical examination and further medical tests as appropriate [20, 21]. Height and weight were measured (bare-foot and in underwear) by trained medics, and BMI was calculated (weight in kilograms divided by height squared in meters) [22]. We used the BMI classification of the US Centers for Disease Control and Prevention, which was validated and selected by the Israeli Ministry of Health as the routine reference for anthropometric data for Israeli children and adolescents [23]. Separately for males and females [24], the study population was divided into four BMI-for-age percentile groups [25]: underweight (<5th percentile), normal weight (5–84th), overweight (85–94th) and obese (≥ 95th). SBP and DBP were routinely recorded, based on the measurement on the right arm acquired while sitting quietly for at least 5 min. Until 2005, manual sphygmomanometers were used (1977–1985, mercury sphygmomanometers; 1986–2005, aneroid sphygmomanometers). From 2006, digital oscillometric devices gradually replaced manual ones.

Data regarding years of schooling were obtained from the Ministry of Education and were dichotomized at 11 years (<11/≥ 11 years) [10]. Data regarding immigration history and place of residence were received from

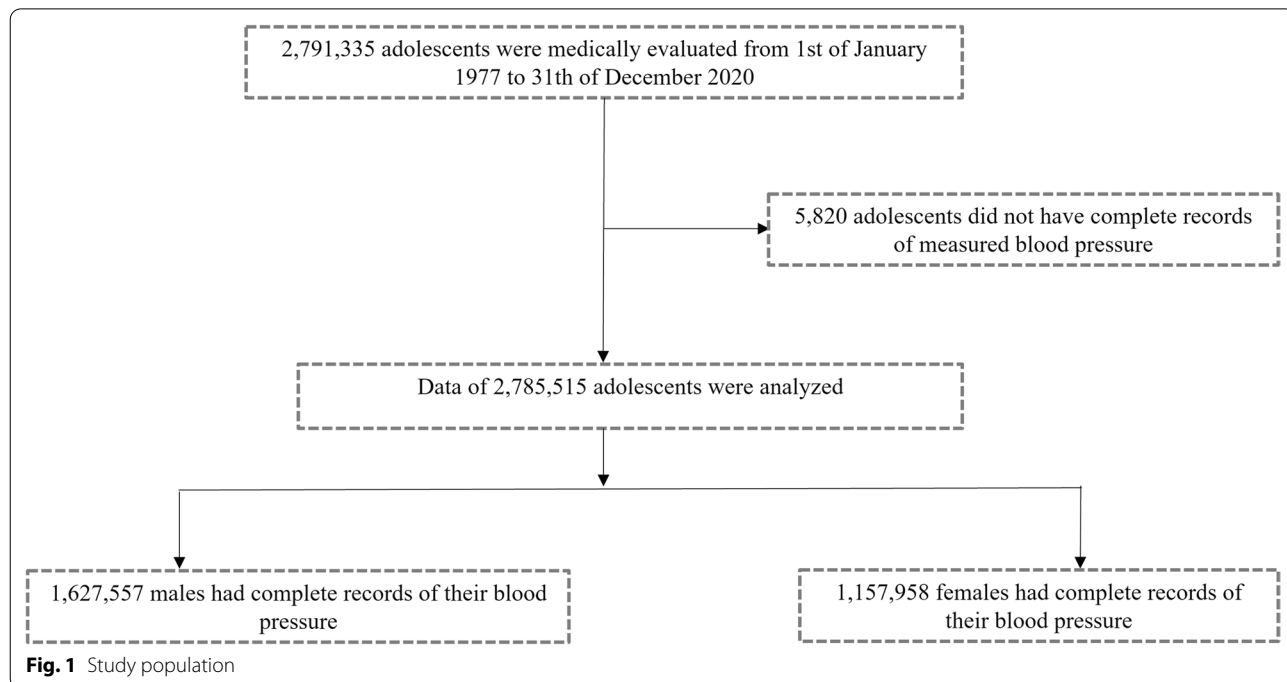


Table 1 Characteristics of males by time intervals (n = 1,627,557)

	1977–1980 (n = 97,483)	1981–1985 (n = 1,35,678)	1986–1990 (n = 1,57,008)	1991–1995 (n = 2,05,252)	1996–2000 (n = 2,07,875)	2001–2005 (n = 2,05,692)	2006–2010 (n = 1,93,699)	2011–2015 (n = 2,18,790)	2016–2020 (n = 2,06,080)	Total (n = 16,27,557)	P for trend
Age (mean ± SD)	17.4 ± 0.5	17.4 ± 0.5	17.4 ± 0.5	17.5 ± 0.8	17.5 ± 0.8	17.3 ± 0.6	17.3 ± 0.6	17.4 ± 0.8	17.4 ± 0.7	17.4 ± 0.7	0.12
Height (cm ± SD)	172.9 ± 6.6	173.3 ± 6.7	173.9 ± 6.7	174.3 ± 6.8	174.2 ± 6.9	173.9 ± 6.8	174.2 ± 6.7	173.8 ± 6.8	174.2 ± 6.8	174 ± 6.8	0.046
BMI (mean ± SD)	20.7 ± 2.8	20.6 ± 2.9	21.1 ± 3.1	21.1 ± 3.3	21.1 ± 3.5	21.6 ± 3.8	21.9 ± 4.0	22.4 ± 4.35	22.8 ± 4.4	21.5 ± 3.7	< 0.001
CDC BMI groups (% of each BMI percentile category)											
Underweight	8058 (8.3)	12,513 (9.3)	13,828 (8.9)	17,000 (8.6)	18,334 (9.1)	15,578 (7.7)	13,081 (6.8)	13,472 (6.3)	13,556 (6.7)	1,24,420 (7.8)	
Normal weight	81,228 (84.2)	1,11,594 (82.9)	1,25,690 (80.7)	1,57,596 (79.5)	1,57,312 (77.8)	1,53,480 (75.9)	1,41,329 (73.8)	1,52,355 (70.9)	1,42,770 (70.7)	12,23,354 (76.6)	
Overweight	5326 (5.4)	7429 (5.5)	11,223 (7.2)	15,606 (7.9)	16,508 (8.2)	19,816 (9.8)	21,381 (11.2)	27,084 (12.6)	24,796 (12.3)	1,49,079 (9.3)	
Obese	1986 (2.1)	3050 (2.3)	5030 (3.2)	7950 (4.0)	10,052 (5.0)	13,375 (6.6)	15,893 (8.2)	22,114 (10.3)	20,776 (10.3)	1,00,026 (6.3)	
Immigrants (% of time interval)	18,842 (19.3)	15,576 (11.5)	13,872 (8.8)	37,962 (18.5)	47,970 (23.1)	46,705 (22.7)	34,773 (18.0)	24,944 (11.4)	19,012 (9.2)	2,59,656 (16.0)	0.97
Years of education ≥ 11 (% of time interval)	61,361 (63.2)	99,202 (73.4)	12,968 (82.8)	1,85,590 (90.6)	1,91,457 (92.1)	1,93,326 (94.0)	1,81,861 (94.0)	2,00,850 (92.1)	1,73,019 (94.5)	1,416,346 (88.4)	0.004
Socioeconomic status (% of each category)											
Low	29,456 (30.7)	41,462 (30.9)	45,283 (29.1)	58,851 (29.0)	58,187 (28.1)	58,214 (28.4)	57,367 (29.7)	71,381 (32.8)	58,985 (28.9)	4,79,195 (29.7)	
Medium	45,714 (47.6)	64,026 (47.7)	76,167 (49.0)	1,02,573 (50.5)	1,09,380 (52.9)	1,06,996 (52.2)	98,301 (51.0)	1,04,099 (47.9)	1,01,908 (50.0)	8,09,164 (50.1)	
High	20,807 (21.7)	28,628 (21.3)	34,051 (21.9)	41,798 (20.6)	39,138 (18.9)	39,689 (19.4)	37,255 (19.3)	41,987 (19.3)	43,061 (21.1)	3,26,414 (20.2)	

CDC US Center of Disease Control; BMI body mass index (calculated as weight in kilograms divided by height in meters squared); SD standard deviations; cm centimeters; kg kilograms

Table 2 Characteristics of females by time intervals (n = 1,157,958)

	1977–1980 (n = 58,181)	1981–1985 (n = 90,198)	1986–1990 (n = 1,09,192)	1991–1995 (n = 1,43,745)	1996–2000 (n = 1,50,368)	2001–2005 (n = 1,53,276)	2006–2010 (n = 1,45,457)	2011–2015 (n = 1,53,623)	2016–2020 (n = 1,53,908)	Total (n = 1,157,958)	P value for trend
Age (mean ± SD)	17.5 ± 0.4	17.4 ± 0.4	17.4 ± 0.3	17.3 ± 0.3	17.3 ± 0.4	17.2 ± 0.4	17.1 ± 0.4	17 ± 0.6	17.0 ± 0.5	17.2 ± 2.7	0.48
Height (cm ± SD)	161.9 ± 5.9	162.1 ± 5.9	162.5 ± 6.0	162.1 ± 6.2	162.0 ± 6.2	162.1 ± 6.3	161.8 ± 6.2	162.2 ± 6.3	162.2 ± 6.2	162.2 ± 6.2	0.51
BMI (mean ± SD)	21.0 ± 2.9	20.9 ± 3.0	21.1 ± 3.2	21.1 ± 3.4	21.2 ± 3.5	21.2 ± 3.7	21.5 ± 3.9	22 ± 4.2	22.6 ± 4.3	21.5 ± 3.7	0.002
CDC BMI groups (% of each BMI percentile category)											
Underweight	2229 (3.8)	3927 (4.4)	4581 (4.2)	6741 (4.7)	7127 (4.7)	7502 (4.9)	7045 (4.9)	6213 (4.1)	5806 (3.8)	51,171 (4.4)	0.001
Normal weight	50,633 (87.3)	77,811 (86.5)	92,536 (84.9)	1,19,379 (83.1)	1,23,537 (82.3)	1,23,963 (81.1)	1,14,648 (79.0)	1,17,181 (76.8)	1,14,940 (75.2)	9,34,628 (81.0)	
Overweight	4438 (7.7)	6917 (7.7)	9590 (8.8)	13,536 (9.4)	14,506 (9.7)	15,387 (10.1)	16,294 (11.2)	19,879 (13.0)	21,142 (13.8)	1,21,689 (10.5)	
Obese	704 (1.2)	1249 (1.4)	2327 (2.1)	3934 (2.7)	4891 (3.3)	6051 (4.0)	7049 (4.9)	9377 (6.1)	10,918 (7.1)	46,500 (4.0)	
Immigrants (% of time interval)	8548 (14.7)	8206 (9.1)	7327 (6.7)	16,307 (11.3)	27,728 (18.4)	33,836 (22.1)	26,814 (18.4)	18,207 (11.9)	14,063 (9.1)	1,61,036 (13.9)	0.61
Years of education ≥ 11 (% of time interval)	48,412 (85.3)	80,902 (91.0)	1,04,099 (96.6)	1,39,508 (97.6)	1,45,783 (97.0)	1,49,065 (97.3)	1,42,693 (98.1)	1,50,279 (98.1)	1,33,567 (97.8)	1,094,308 (96.4)	0.02
Socioeconomic status (% of each category)											
Low	11,500 (20.7)	19,582 (22.2)	21,518 (20.1)	28,739 (20.2)	33,465 (22.3)	33,790 (22.1)	32,358 (22.3)	32,031 (20.9)	31,633 (20.7)	2,44,616 (21.3)	0.19
Medium	28,350 (51.1)	45,566 (51.6)	58,008 (54.1)	78,144 (55.0)	82,946 (55.3)	85,663 (56.0)	79,580 (54.8)	83,523 (54.6)	83,251 (54.4)	6,25,031 (54.5)	
High	15,622 (28.2)	23,099 (26.2)	27,757 (25.9)	35,140 (24.7)	33,483 (22.3)	33,524 (21.9)	33,350 (23.0)	37,504 (24.5)	38,052 (24.9)	2,77,531 (24.2)	

CDC US Center of Disease Control; BMI body mass index (calculated as weight in kilograms divided by height in meters squared); SD standard deviations; cm centimeters; kg kilograms

Table 3 Recorded BMI, crude systolic and diastolic blood pressure values, and BMI adjusted levels, separately for males (a) and females (b)

Years	BMI		Recorded SBP		BMI adjusted SBP	Recorded DBP		BMI adjusted DBP
	Mean	SD	Mean	SD	Mean	Mean	SD	Mean
A. Males (n = 1,627,557)								
1977–1980	20.66	2.83	120.00	12.19	120.90	73.29	8.10	73.67
1981–1985	20.57	2.88	118.91	11.94	119.87	72.97	8.02	73.43
1986–1990	20.91	3.13	121.13	11.95	121.66	74.12	8.17	74.37
1991–1995	21.13	3.29	120.43	11.69	120.76	73.76	7.99	73.92
1996–2000	21.18	3.50	117.48	11.11	117.74	73.29	7.96	73.42
2001–2005	21.55	3.77	117.37	11.15	117.39	71.62	7.90	71.63
2006–2010	21.92	4.05	121.56	11.87	121.31	70.03	8.48	69.93
2011–2015	22.45	4.35	123.85	12.29	123.23	69.51	9.00	69.25
2016–2020	22.78	4.41	121.60	12.09	120.80	69.73	8.86	69.38
B. Females (n = 1,157,958)								
1977–1980	20.99	2.91	115.12	11.7	115.49	72.49	8.03	72.70
1981–1985	20.88	2.98	113.07	11.49	113.53	71.12	8.00	71.38
1986–1990	21.1	3.18	114.36	11.89	114.62	71.99	8.37	72.14
1991–1995	21.14	3.36	114.25	12.09	114.48	71.68	7.94	71.81
1996–2000	21.19	3.50	110.38	11.31	110.58	70.29	8.02	70.40
2001–2005	21.25	3.70	109.46	11.02	109.62	69.31	7.95	69.40
2006–2010	21.53	3.92	112.60	11.79	112.57	68.98	8.23	69.97
2011–2015	22.04	4.18	114.51	11.94	114.11	69.47	8.55	69.28
2016–2020	22.6	4.35	113.21	11.32	112.41	69.60	8.39	69.26

The recorded blood pressure values were retrieved directly from the Israeli Defense Forces Registry. BMI adjusted values of SBP and DBP were calculated by analysis of covariance (ANCOVA) using a general linear model

BMI body mass index (weight in kilograms divided by height squared in meters); SBP systolic blood pressure (mm/Hg); DBP diastolic blood pressure; SD standard deviation

the Ministry of Interior [26]. Residential socioeconomic status was classified into three groups (low/medium/high) based on criteria of the Israeli Bureau of Statistics [26, 27].

Statistical analysis

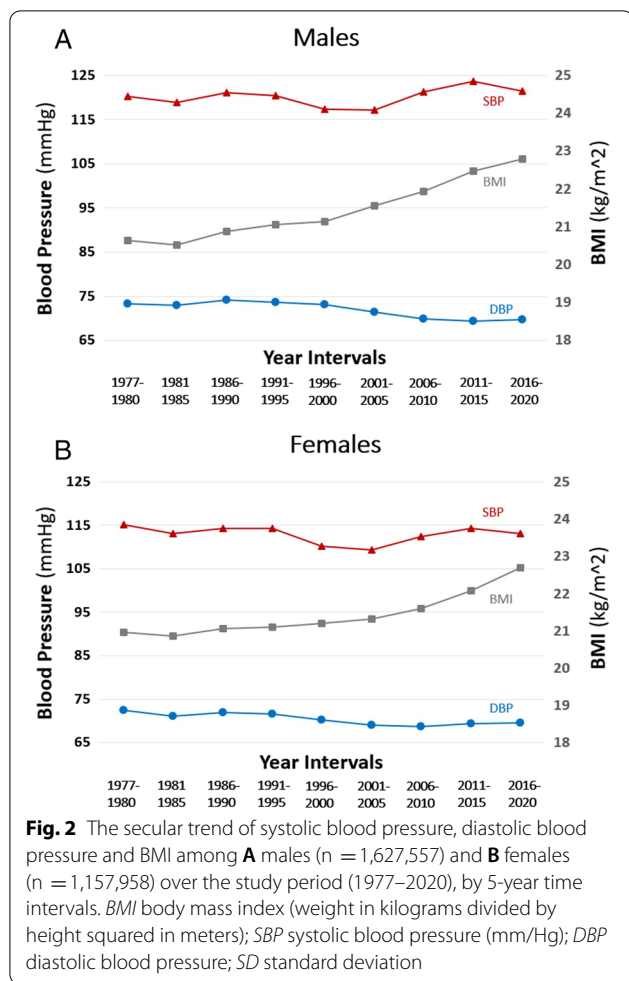
We a priori stratified analyses by sex and divided the study period into 5-year time intervals (1977–1980, 1981–1985, 1986–1990, 1991–1995, 1996–2000, 2001–2005, 2006–2010, 2011–2015 and 2016–2020). We calculated the P for trend for all the study variables including SBP, DBP and BMI using linear regression models. We plotted mean SBP, DBP and BMI values for the time intervals.

Two analytical approaches were taken to address the potential effect of the rise in adolescent BMI throughout the study period [10], in light of its tight relationship with BP levels [10]. (i) Mean SBP and DBP values were adjusted for BMI in each time interval using analysis of covariance (ANCOVA). We calculated the regression

coefficients of the trends in SBP and DBP in unadjusted ($\beta_{\text{unadjusted}}$) and BMI-adjusted ($\beta_{\text{BMI-adjusted}}$) models, which reflected the predicted mean change in mmHg per 5-year interval. (ii) We stratified the secular trend of mean SBP and DBP by BMI categories (underweight/normal BMI/overweight/obese). Additional sensitivity analyses included the following: (1) limiting the study sample to persons with unimpaired health (apart from hypertension, a lack of chronic medical treatment, or a history of major surgery or cancer) in order to minimize confounding by coexisting comorbidities. (2) We included only Israeli-born adolescents to reduce health effects related to immigration [26]. The IBM SPSS software program version 25 was used for statistical analysis.

Results

The final study population comprised 2,785,515 adolescents; 1,157,958 (41.6%) were females. The characteristics at assessment are shown separately for males and females in Tables 1, 2, respectively. The overall mean



age at assessment was 17.4 (SD; 0.6) years in both sexes. During the study period, the mean height increased by approximately 1 cm in males, and remained stable in females. There was a trend of increasing mean BMI: from 20.7 (SD; 2.8) kg/m² for males and 21.0 (2.9) kg/m² for females in the earliest time interval, to 22.8 (4.4) kg/m² and 22.6 (4.4) kg/m², respectively (P for trend <0.001 in both sexes; Tables 1, 2). This increase was accompanied by increased prevalences of adolescent overweight and obesity (P for trend <0.001 in both sexes; Tables 1, 2).

Mean DBP decreased in both sexes during the study period (P for trend <0.001; Table 3; Fig. 2). The overall mean decrease was 3.6 mmHg ($\beta_{unadjusted} = -0.65$ mmHg/5-year, $\beta_{BMI-adjusted} = -0.74$ mmHg/5-year) in males and 2.9 mmHg ($\beta_{unadjusted} = -0.41$ mmHg/5-year, $\beta_{BMI-adjusted} = -0.48$ mmHg/5-year) in females. The SBP trend was not consistent between the sexes. In males, we recorded a small increase in mean SBP during the study period, of 1.6 mmHg (P for trend <0.001; ($\beta_{unadjusted}$

= 0.39 mmHg/5-year, $\beta_{BMI-adjusted} = 0.17$ mmHg/5-year). In females we observed a decrease of 1.9 mmHg (P for trend <0.001 $\beta_{unadjusted} = -0.10$, $\beta_{BMI-adjusted} = -0.25$).

The trends of SBP and DBP levels remained stable throughout the study period, across all BMI categories (Fig. 3). For both sexes, mean SBP and DBP values in every time interval were highest in the obese group, followed by the overweight group, compared to the other BMI groups. The secular trends of BMI-adjusted DBP (Additional file 1: Figure S1) followed trends of the crude BP values in both sexes (P for trend for both sexes <0.001, Table 3). The results persisted when the study population was limited to those with unimpaired health (Additional file 1: Figure S2), and to those born in Israel only (Additional file 1: Figure S3).

Discussion

In this nationwide study we demonstrated a trend of a slight increase in SBP, of 1.6 mmHg, among males; and a small decrease, of 1.9 mmHg, among females, over the course of four decades. Meanwhile, DBP exhibited mean decreases of 3.6 and 2.9 mmHg among males and females, respectively. These trends remained after accounting for increases in BMI throughout the study period, and in all strata of BMI categories.

A pooled analysis of 19 million adults in Western countries showed a trend of decreasing SBP and DBP [28]. Among the adolescent population, several studies from the US reported minimal decreases in SBP, of up to 0.8 mm/Hg, during 13–20 years (1974–1994 [14], 1999–2012 [17] and 1998–2018 [12]). Reports from other Western countries such as Northern Ireland (during the years 1999–2009) [18], Japan (1994–2010) [15] and Korea (1998–2008) [29] reported much larger SBP decrements, of 7–10 mmHg. DBP decrements of 2–4 mmHg were reported among American and Korean adolescents [12, 14, 17, 29], and up to 11 mmHg in the Northern Ireland population [18]. Our results concur with most reports that were based on surveys originated from the United States.

For a time interval of 44 years, we report overall increases in mean BMI of 2.1 and 1.6 kg/m² among male and female adolescents, respectively. This concurs with studies that reported increases over recent decades in BMI in developed countries; and following the industrial process, in developing countries as well. Globally, mean BMI increases were estimated as about 0.5 kg/m² per decade [30, 31]. As expected, throughout the period of the current study, mean BP values were significantly higher among those with overweight and obesity than normal weight, emphasizing the effect of BMI on BP [32, 33]. Yet, the trends of SBP and DBP were consistent

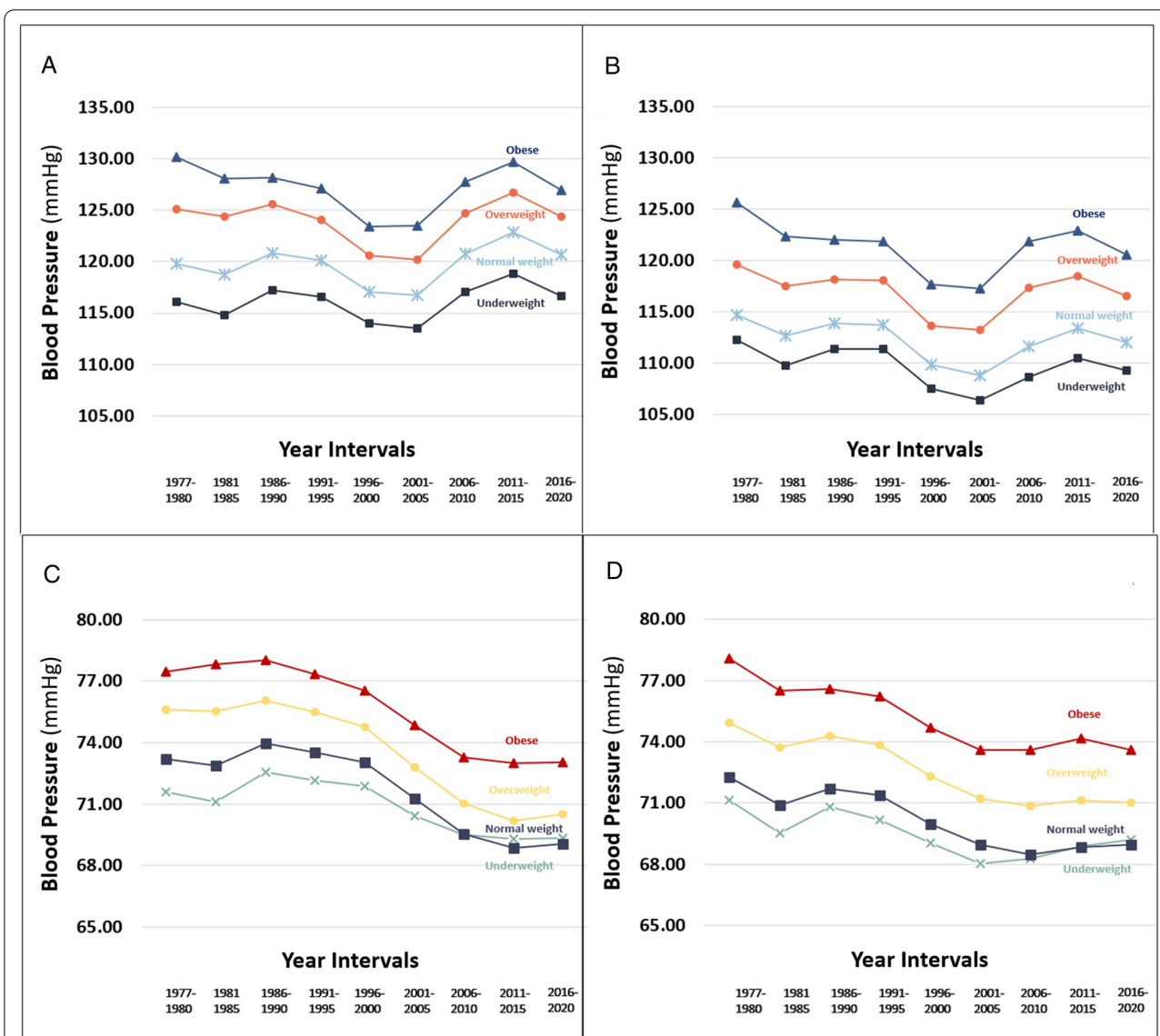


Fig. 3 The secular trends of systolic blood pressure and diastolic blood pressure by BMI group, separately for males (A, C) and females (B, D) by 5-year time intervals. The BMI groups are defined by the US Center of Disease Control: underweight (< 5th percentile), normal weight (5–84th), overweight (85–94th) and obese (\geq 95th)

regardless of BMI category, and most BMI-adjusted analyses demonstrated similar trends to those of the crude BP values. Therefore, it is unlikely that BMI solely accounts for the BP trends described in this study. Notably, the impact of increased BMI (overweight and obesity compared to normal weight) in regard to SBP and DBP was more pronounced in females than in males, despite a similar increase in the proportion of overweight and obesity in both sexes during the study period. This observation may be explained by the occurrence of increased BMI that represents increased muscle among a higher proportion of males than females [34, 35].

Alternatively, our results may stem from changes in demographic composition, mostly due to immigration [36]. Starting from the 1990s and continuing until 2010, the proportion of immigrants from the entire examinees' population increased to 23% (compared to approximately 10% in the 1980s). This mostly comprised Ashkenazi Jews immigrating from the countries of the former Union of Soviet Socialist Republics. Moreover, immigration status [26] and Ashkenazi ethnicity [37] in particular, were associated with increased risk for adolescent elevated BP. This explanation is less probable since we analyzed separately Israeli-born adolescents

and observed similar trends to that of the entire study population.

Our study lacks data of behavioral factors that are associated with hypertension. While dietary changes are associated with hypertension, multinational long-term cross-sectional studies have indicated stable rates of salt consumption across recent decades [38, 39]. Similarly, fruit and vegetable consumption, which are recommended to reduce blood pressure, remained stable over the last four decades in Israel [40]. Furthermore, previous reports from adolescent populations concluded that salt intake and fruit consumption could not explain BP trends [29] among adolescents. Smoking prevalence among adolescents in Western countries is decreasing [41]; however, its role was shown to be minor regarding SBP and DBP trends among adolescents [29]. Similarly, changes in physical activity [16, 29] or in daily alcohol drinking among adolescents are unlikely to explain the BP trends. Notably, alcohol abuse is more than five-fold less frequent in Israel than in other Western countries such as the US. The effects of other factors on BP are more controversial; for example, the possibility of associations of birth weight and breastfeeding with adult and adolescent hypertension [16, 18, 42].

The results of our study are of public health significance since elevated blood pressure among adolescents plays a substantial role in future cardiovascular morbidity and mortality [3, 43]. This effect is mediated through the increased risk for adulthood hypertension as well as via induction of additional cardiovascular risk factors such as chronic kidney disease and diabetes [4, 5]. Recently, adolescent hypertension has been shown to promote early onset type 2 diabetes [5] which has even more deleterious cardiovascular sequelae compared to later onset diabetes [44]. Moreover, elevated blood pressure is a central factor of the metabolic syndrome [45] representing insulin resistance which is induced by obesity [46]. Nevertheless, we observed opposite trends of the BMI and the BP among adolescents throughout the study period, while other traditional environmental and behavioral risk factors are considered to remain stable throughout the years. This suggests that additional factors, that are not traditionally addressed [47], play role in the pathogenesis of elevated blood pressure among adolescents.

This study has limitations. First, throughout the study period the devices used for BP measurements changed. This, however, cannot be the sole explanation for the results as the decreasing trend in DBP started before the digital oscillometric devices were applied and continued after they were routinely implemented in the medical examination. Second, we lacked lifestyle data. Finally, our study did not include some ethnicities, such as East Asians. Yet, the genetic ancestry of the population was

heterogeneous, and was shown to be related by genotyping to contemporary Middle East, North African, European and other Western populations [48, 49]. The strengths of this study include a nationwide screening setting that applied to both sexes, measured BP, weight and height within a narrow age range during a period of over four decades.

In conclusion, we report a trend of a decrement in DBP values during the last four decades in both sexes, which occurred despite significant increases in BMI and in obesity prevalence, but in the presence of more modest changes in SBP.

Abbreviations

BP: Blood pressure; SBP: Systolic blood pressure; DBP: Diastolic blood pressure; BMI: Body mass index.

Supplementary Information

The online version contains supplementary material available at <https://doi.org/10.1186/s12933-021-01433-0>.

Additional file 1: Figure S1. The secular trends of BMI-adjusted systolic blood pressure and diastolic blood pressure among **A** males (n = 16,27,557) and **B** females (n = 11,57,958), by 5-year time intervals. **Figure S2.** The secular trends of systolic blood pressure, diastolic blood pressure and BMI among **A** males (n = 11,47,611) and **B** females (n = 8,17,085) with unimpaired health, by 5-year time intervals. **Figure S3.** The secular trends of systolic blood pressure, diastolic blood pressure and BMI among **A** males (n = 13,67,901) and **B** females (n = 9,96,922) born in Israel, by 5-year time intervals.

Acknowledgements

Not applicable.

Authors' contributions

Concept and design: BF, EG, GT. Acquisition and analysis of data: BF, YZ, ED, DT, GT. Interpretation of the data: All authors. Drafting of the manuscript and critical revision: All authors. Statistical analysis: BF, YZ, ED, GT. Supervision: GT. All authors read and approved the final manuscript.

Funding

No funding sources.

Availability of data and materials

The databases used in our study were based on Israeli Defense Forces registries and are stored on Israeli Defense Forces computers. These computers are connected solely to the military network. These databases cannot be transferred to other computers or shared on the web, due to Israeli Defense Forces data security restrictions.

Declarations

Ethics approval and consent to participate

The study was approved by the IDF's ethics committee, who waived the requirement for informed consent since data were obtained from medical records without the participation of patients.

Consent for publication

Not applicable.

Competing interests

The authors declare that they have no competing interests.

Author details

¹Department of Military Medicine, Hebrew University, Jerusalem and the Israel Defense Forces Medical Corps, Ramat Gan, Israel. ²Division of Cardiology, The Leviev Heart Center, The Chaim Sheba Medical Center, Tel Hashomer, Ramat Gan, Israel. ³Sackler Faculty of Medicine, Tel Aviv University, Tel Aviv, Israel. ⁴The Talpiot Sheba Medical Leadership Program, Ramat Gan, Israel. ⁵Orthopedic Surgery, Rambam Health Care Campus, Haifa, Israel. ⁶Department of Medicine 'B', Zabłudowicz Center for Autoimmune Diseases, Sheba Medical Center, Tel-Hashomer, Ramat Gan, Israel. ⁷Maccabitech, Maccabi Healthcare Services, Tel Aviv, Israel. ⁸Division of Nephrology and Hypertension, Assuta Ashdod Academic Medical Center affiliated to Ben Gurion University, Beer Sheva, Israel. ⁹Harvard Medical School, Boston, MA, USA. ¹⁰Central Management, The Chaim Sheba Medical Center, Tel Hashomer, Ramat Gan, Israel. ¹¹The Hypertension Unit and the Internal Division, The Chaim Sheba Medical Center, Tel Hashomer, Ramat Gan, Israel. ¹²Institute of Endocrinology, Sheba Medical Center, Tel Hashomer, Ramat Gan, Israel.

Received: 25 October 2021 Accepted: 10 December 2021

Published online: 28 December 2021

References

- Gan L, Langenickel T, Petruck J, Kode K, Rajman I, Chandra P, et al. Effects of age and sex on the pharmacokinetics of LCZ696, an angiotensin receptor neprilysin inhibitor. *J Clin Pharmacol*. 2016;56(1):78–86.
- Teng H, Hu J, Ge W, Dai Q, Liu J, Xiao C, et al. Body mass index trajectories during 6–18 years old and the risk of hypertension in young adult: a longitudinal study in Chinese population. *Int J Hypertens*. 2021. <https://doi.org/10.1155/2021/6646868>.
- Gray L, Lee IM, Sesso HD, Batty GD. Blood pressure in early adulthood, hypertension in middle age, and future cardiovascular disease mortality: HAHS (Harvard Alumni Health Study). *J Am Coll Cardiol*. 2011;58(23):2396–403. <https://doi.org/10.1016/j.jacc.2011.07.045>.
- Leiba A, Fishman B, Twig G, Gilad D, Derazne E, Shamiss A, et al. Association of adolescent hypertension with future end-stage renal disease. *JAMA Intern Med*. 2019. <https://doi.org/10.1001/jamainternmed.2018.7632>.
- Fishman B, Grossman E, Zucker I, Orr O, Lutski M, Bardugo A, et al. Adolescent hypertension and risk for early-onset type 2 diabetes: a nationwide study of 1.9 million Israeli adolescents. *Diabetes Care*. 2020. <https://doi.org/10.2337/dc20-1752>.
- Kelly RK, Thomson R, Smith KJ, Dwyer T, Venn A, Magnussen CG. Factors affecting tracking of blood pressure from childhood to adulthood: the childhood determinants of adult health study. *J Pediatr*. 2017;167(6):1422–1428.e2. <https://doi.org/10.1016/j.jpeds.2015.07.055>.
- Song P, Zhang Y, Yu J, Zha M, Zhu Y, Rahimi K, et al. Global prevalence of hypertension in children: a systematic review and meta-analysis. *JAMA Pediatr*. 2019. <https://doi.org/10.1001/jamapediatrics.2019.3310>.
- Roulet C, Bovet P, Brauchli T, Simeoni U, Xi B, Santschi V, et al. Secular trends in blood pressure in children: a systematic review. *J Clin Hypertens*. 2017;19(5):488–97.
- Bendor CD, Bardugo A, Pinhas-Hamiel O, Afek A, Twig G. Cardiovascular morbidity, diabetes and cancer risk among children and adolescents with severe obesity. *Cardiovasc Diabetol*. 2020;19(1):1–14. <https://doi.org/10.1186/s12933-020-01052-1>.
- Twig G, Reichman B, Afek A, Derazne E, Hamiel U, Furer A, et al. Severe obesity and cardio-metabolic comorbidities: a nationwide study of 2.8 million adolescents. *Int J Obes*. 2019;43(7):1391–9. <https://doi.org/10.1038/s41366-018-0213-z>.
- Ogden CL, Carroll MD, Lawman HG, Fryar CD, Kruszon-Moran D, Kit BK, et al. Trends in obesity prevalence among children and adolescents in the United States, 1988–1994 through 2013–2014. *JAMA J Am Med Assoc*. 2016;315(21):2292–9.
- Hardy ST, Sakhuja S, Jaeger BC, Urbina EM, Suglia SF, Feig DL, et al. Trends in blood pressure and hypertension among US children and adolescents, 1999–2018. *JAMA Netw Open*. 2021;4(4):1–14.
- Xi B, Bovet P, Hong YM, Zong X, Chiolerio A, Kim HS, et al. Recent blood pressure trends in adolescents from China, Korea, Seychelles and the United States of America, 1997–2012. *J Hypertens*. 2016;34(10):1948–58.
- Freedman DS, Goodman A, Contreras OA, DasMahapatra P, Srinivasan SR, Berenson GS. Secular trends in BMI and blood pressure among children and adolescents: The Bogalusa Heart Study. *Pediatrics*. 2012. <https://doi.org/10.1542/peds.2011-3302>.
- Shirasawa T, Ochiai H, Nishimura R, Morimoto A, Shimada N, Ohtsu T, et al. Secular trends in blood pressure among Japanese schoolchildren: a population-based annual survey from 1994 to 2010. *J Epidemiol*. 2012;22(5):448–53.
- Smpokos EA, Linardakis M, Papadaki A, Kafatos A. Secular changes in anthropometric measurements and blood pressure in children of Crete, Greece, during 1992/93 and 2006/07. *Prev Med*. 2011;52(3–4):213–7. <https://doi.org/10.1016/j.ypmed.2011.02.006>.
- Xi B, Zhang T, Zhang M, Liu F, Zong X, Zhao M, et al. Trends in elevated blood pressure among US children and adolescents: 1999–2012. *Am J Hypertens*. 2016;29(2):217–25.
- Watkins D, Savage M, Mccarron P, Murray L, Cran G, Boreham C, et al. Trends in blood pressure over 10 years in adolescents: analyses of cross sectional surveys in the Northern Ireland Young Hearts project. *BMJ*. 2004;329(7458):139.
- Bardugo A, Bendor CD, Zucker I, Lutski M, Cukierman-Yaffe T, Derazne E, et al. Adolescent nonalcoholic fatty liver disease and type 2 diabetes in young adulthood. *J Clin Endocrinol Metab*. 2021;106(1):e34–44.
- Fishman B, Shlomain G, Twig G, Derazne E, Tenenbaum A, Fisman EZ, et al. Renal glucosuria is associated with lower body weight and lower rates of elevated systolic blood pressure: results of a nationwide cross-sectional study of 2.5 million adolescents. *Cardiovasc Diabetol*. 2019;18(1):1–8. <https://doi.org/10.1186/s12933-019-0929-7>.
- Tsur AM, Hershkovich S, Zucker I, Lutski M, Pinhas-Hamiel O, Vivante A, et al. Stuttering and incident type 2 diabetes: a population-based study of 2.2 million adolescents. *J Clin Endocrinol Metab*. 2021;106(4):978–87.
- Simchoni M, Hamiel U, Pinhas-Hamiel O, Zucker I, Cukierman-Yaffe T, Lutski M, et al. Adolescent BMI and early-onset type 2 diabetes among Ethiopian immigrants and their descendants: a nationwide study. *Cardiovasc Diabetol*. 2020;19(1):168. <https://doi.org/10.1186/s12933-020-01143-z>.
- Goldstein A, Haelyon U, Krolik E, Sack J. Comparison of body weight and height of Israeli schoolchildren with the Tanner and Centers for Disease Control and Prevention growth charts. *Pediatrics*. 2001. <https://doi.org/10.1542/peds.108.6.e108>.
- Furer A, Afek A, Orr O, Gershovitz L, Landau Rabbi M, Derazne E, et al. Sex-specific associations between adolescent categories of BMI with cardiovascular and non-cardiovascular mortality in midlife. *Cardiovasc Diabetol*. 2018;17(1):80. <https://doi.org/10.1186/s12933-018-0727-7>.
- Kuczmariski RJ, Ogden CL, Guo SS, Grummer-Strawn LM, Flegal KM, Mei Z, et al. 2000 CDC growth charts for the United States: methods and development. *Vital and health statistics, series 11, vol. 11*. Maryland: Data from the National Health Survey, the National Health and Nutrition Examination Surveys, and the Hispanic Health and Nutrition Examination Survey; 2002.
- Hamiel U, Pinhas-Hamiel O, Vivante A, Bendor C, Bardugo A, Afek A, et al. Impact of immigration on body mass index and blood pressure among adolescent males and females a nationwide study. *Hypertension*. 2019;74(6):1316–23.
- Bardugo A, Derazne E, Zucker I, Bendor CD, Puris G, Lutski M, et al. Adolescent thyroid disorders and risk for type 2 diabetes in young adulthood. *J Clin Endocrinol Metab*. 2021;106(9):e3426–35.
- Zhou B, Bentham J, Di Cesare M, Bixby H, Danaei G, Cowan MJ, et al. Worldwide trends in blood pressure from 1975 to 2015: a pooled analysis of 1479 population-based measurement studies with 19.1 million participants. *Lancet*. 2017;389(10064):37–55.
- Khang YH, Lynch JW. Exploring determinants of secular decreases in childhood blood pressure and hypertension. *Circulation*. 2011;124(4):397–405.
- Di Cesare M, Bentham J, Stevens GA, Zhou B, Danaei G, Lu Y, et al. Trends in adult body-mass index in 200 countries from 1975 to 2014: a pooled analysis of 1698 population-based measurement studies with 19.2 million participants. *Lancet*. 2016;387(10026):1377–96. [https://doi.org/10.1016/S0140-6736\(16\)30054-X](https://doi.org/10.1016/S0140-6736(16)30054-X).
- Finucane MM, Stevens GA, Cowan MJ, Danaei G, Lin JK, Paciorek CJ, et al. National, regional, and global trends in body-mass index since 1980: systematic analysis of health examination surveys and epidemiological

- studies with 960 country-years and 9.1 million participants. *Lancet*. 2011;377(9765):557–67. [https://doi.org/10.1016/S0140-6736\(10\)62037-5](https://doi.org/10.1016/S0140-6736(10)62037-5).
32. Skinner AC, Perrin EM, Moss LA, Skelton JA. Cardiometabolic risks and severity of obesity in children and young adults. *N Engl J Med*. 2015;373(14):1307–17. <https://doi.org/10.1056/NEJMoa1502821>.
 33. Naguib YM, Samaka RM, Rizk MS, Ameen O, Motawea SM. Countering adipose tissue dysfunction could underlie the superiority of telmisartan in the treatment of obesity-related hypertension. *Cardiovasc Diabetol*. 2021;20(1):1–19. <https://doi.org/10.1186/s12933-021-01259-w>.
 34. Lindsay RS, Hanson RL, Roumain J, Ravussin E, Knowler WC, Tataranni PA. Body mass index as a measure of adiposity in children and adolescents: relationship to adiposity by dual energy X-Ray absorptiometry and to cardiovascular risk factors. *J Clin Endocrinol Metab*. 2001;86(9):4061–7.
 35. Hwang YC, Jeon WS, Park CY, Youn BS. The ratio of skeletal muscle mass to visceral fat area is a main determinant linking circulating irisin to metabolic phenotype. *Cardiovasc Diabetol*. 2016;15(1):1–6.
 36. Reuven Y, Dreiherr J, Shvartzman P. The prevalence of diabetes, hypertension and obesity among immigrants from East Africa and the former Soviet Union: a retrospective comparative 30-year cohort study. *Cardiovasc Diabetol*. 2016;15(1):8–14.
 37. Fishman B, Leiba A, Twig G, Shlomain G, Orr O, Landau R, et al. Ethnic variability among Jews is associated with hypertension: results of a nationwide study of 1.44 million adolescents. *Am J Hypertens*. 2020;33(2):175–81.
 38. Powles J, Fahimi S, Micha R, Khatibzadeh S, Shi P, Ezzati M, et al. Global, regional and national sodium intakes in 1990 and 2010: a systematic analysis of 24 h urinary sodium excretion and dietary surveys worldwide. *BMJ Open*. 2013. <https://doi.org/10.1136/bmjopen-2013-003733>.
 39. Bernstein AM, Willett WC. Trends in 24-h urinary sodium excretion in the United States, 1957–2003: a systematic review. *Am J Clin Nutr*. 2010;92(5):1172–80.
 40. Lev B, Elliot Rosenberg TS. Health behaviors—healthful nutrition. Jerusalem: Israeli Ministry of Health; 2011.
 41. Meza R, Jimenez-Mendoza E, Levy DT. Trends in tobacco use among adolescents by grade, sex, and race, 1991–2019. *JAMA Netw Open*. 2020;3(12):1–14.
 42. Jornayvaz FR, Vollenweider P, Bochud M, Mooser V, Waeber G, Marques-Vidal P. Low birth weight leads to obesity, diabetes and increased leptin levels in adults: the CoLaus study. *Cardiovasc Diabetol*. 2016;15(1):73. <https://doi.org/10.1186/s12933-016-0389-2>.
 43. Liu Y, Yan Y, Jiang T, Li S, Guo Y, Fernandez C, et al. Impact of long-term burden of body mass index and blood pressure from childhood on adult left ventricular structure and function. *J Am Heart Assoc*. 2020. <https://doi.org/10.1161/JAHA.120.016405>.
 44. Wu H, Lau ESH, Yang A, Ma RCW, Kong APS, Chow E, et al. Trends in diabetes-related complications in Hong Kong, 2001–2016: a retrospective cohort study. *Cardiovasc Diabetol*. 2020;19(1):1–11. <https://doi.org/10.1186/s12933-020-01039-y>.
 45. Lopez-Lopez JP, Cohen DD, Ney-Salazar D, Martinez D, Otero J, Gomez-Arbelaiz D, et al. The prediction of metabolic syndrome alterations is improved by combining waist circumference and handgrip strength measurements compared to either alone. *Cardiovasc Diabetol*. 2021;20(1):1–11. <https://doi.org/10.1186/s12933-021-01256-z>.
 46. Aguilar A. Hypertension: global blood pressure trends. *Nat Rev Nephrol*. 2017;13(1):2.
 47. Kim S, Kyung C, Park JS, Lee SP, Kim HK, Ahn CW, et al. Normal-weight obesity is associated with increased risk of subclinical atherosclerosis. *Cardiovasc Diabetol*. 2015;14(1):1–9.
 48. Ostrer H, Skorecki K. The population genetics of the Jewish people. *Hum Genet*. 2013;132(2):119–27.
 49. Behar DM, Yunusbayev B, Metspalu M, Metspalu E, Rosset S, Parik J, et al. The genome-wide structure of the Jewish people. *Nature*. 2010;466(7303):238–42.

Publisher's Note

Springer Nature remains neutral with regard to jurisdictional claims in published maps and institutional affiliations.

Ready to submit your research? Choose BMC and benefit from:

- fast, convenient online submission
- thorough peer review by experienced researchers in your field
- rapid publication on acceptance
- support for research data, including large and complex data types
- gold Open Access which fosters wider collaboration and increased citations
- maximum visibility for your research: over 100M website views per year

At BMC, research is always in progress.

Learn more biomedcentral.com/submissions

