

RESEARCH ARTICLE

Open Access



Association between thyroid dysfunction and type 2 diabetes: a meta-analysis of prospective observational studies

Fen Rong^{1†}, Hongji Dai^{2†}, Yuwan Wu^{3†}, Jibin Li⁴, Guoping Liu^{5*}, Hanbei Chen^{6*} and Xi Zhang^{7*}

Abstract

Background: Diabetes mellitus and thyroid disease are two areas of broad interest in the field of endocrinology and metabolism. Variation of thyroid hormone concentration, even within the normal range, may portend the onset of type 2 diabetes mellitus (T2DM), especially among those with prediabetes. However, current evidence is mixed.

Methods: Prospective studies which assessed diabetes incidence were identified using a database search of MEDLINE and Embase through May 1, 2021. The Sidik-Jonkman random-effects model and cubic spline model were used to evaluate the associations and dose-response relationships between thyroid function/hormone levels and risk of T2DM and cardiovascular disease (CVD) risk among T2DM patients.

Results: A total of 12 prospective studies were included. We found that high baseline TSH levels were related to a 17% higher risk of T2DM (RR 1.17, 95% CI 1.01, 1.36; $I^2=78%$, $P<0.01$), compared with normal TSH levels. Low FT3 (RR 1.40, 95% CI 1.09, 1.80; $I^2=59%$, $P=0.03$) and low FT4 (RR 1.33, 95% CI 1.04, 1.71; $I^2=62%$, $P=0.02$) levels were significantly associated with risk of T2DM. The cubic spline model indicated a J-shaped relationship with TSH, but inverted-J-shaped relationships with FT3 and FT4. CVD events and all-cause deaths were prospectively evaluated in four studies, but were not associated with abnormal thyroid function.

Conclusions: Our meta-analysis determined that abnormal thyroid hormone level is associated with an increased risk of T2DM, showing a J-shaped relationship with TSH and inverted-J-shaped relationships with FT3 and FT4.

Trial registration: Registered number in PROSPERO: [CRD42021225695](https://www.crd42021225695).

Keywords: Thyroid dysfunction, Type 2 diabetes, Meta-analysis, Prospective study

* Correspondence: 13564133728@163.com; chenhanbei@xinhumed.com.cn; zhangxi@xinhumed.com.cn

[†]Fen Rong, Hongji Dai and Yuwan Wu contributed equally to this work.

⁵School of Basic Medical Sciences, Shanghai University of Traditional Chinese Medicine, 201203 Shanghai, China

⁶Department of Endocrinology, Xin Hua Hospital, Shanghai Jiao Tong University School of Medicine, No. 1665 Kongjiang Road, Shanghai 200092, China

⁷Clinical Research Unit, Xin Hua Hospital, Shanghai Jiao Tong University School of Medicine, No. 1665 Kongjiang Road, Shanghai 200092, China

Full list of author information is available at the end of the article



© The Author(s). 2021 **Open Access** This article is licensed under a Creative Commons Attribution 4.0 International License, which permits use, sharing, adaptation, distribution and reproduction in any medium or format, as long as you give appropriate credit to the original author(s) and the source, provide a link to the Creative Commons licence, and indicate if changes were made. The images or other third party material in this article are included in the article's Creative Commons licence, unless indicated otherwise in a credit line to the material. If material is not included in the article's Creative Commons licence and your intended use is not permitted by statutory regulation or exceeds the permitted use, you will need to obtain permission directly from the copyright holder. To view a copy of this licence, visit <http://creativecommons.org/licenses/by/4.0/>. The Creative Commons Public Domain Dedication waiver (<http://creativecommons.org/publicdomain/zero/1.0/>) applies to the data made available in this article, unless otherwise stated in a credit line to the data.

Background

Type 2 diabetes mellitus (T2DM) is a chronic metabolic disease that results from pancreatic beta-cell dysfunction and peripheral insulin resistance. The worldwide prevalence is 9.1%, equating to 415 million adults suffering from the disease [1]. T2DM is a complex disease arising from a combination of genetic and lifestyle factors. Recently, evidence has suggested that low circulating levels of thyroid hormone, even within the normal reference concentrations, may be related to an elevated risk of developing T2DM, especially within the prediabetes population [2].

Like diabetes, thyroid dysfunction results from dysregulated hormone secretion. Recent data from the Colorado Thyroid Disease Prevalence study showed that 9.5% of 25,862 participants had an elevated thyroid-stimulating hormone (TSH); conversely, 2.2% had low TSH [3]. The thyroid hormone axis includes TSH, thyroxine (T4), and triiodothyronine (T3), all of which are required to maintain the normal functioning of the thyroid. The imbalance of these hormones may lead to metabolic overactivity (hyperthyroidism; excess thyroid hormone) or underactivity (hypothyroidism; inadequate thyroid hormone). Based on the severity of the imbalance, hyperthyroidism and hypothyroidism can be diagnosed as either clinical or subclinical, of which the latter is the more prevalent [4]. Subclinical thyroid dysfunction is commonly defined as having an abnormal TSH but normal T4 concentration. The presence or absence of symptoms may be independent of T4 levels [5, 6]. Despite being mild, subclinical thyroid dysfunction has been linked to several complications, including cardiovascular disease (CVD) [7], chronic kidney disease [8], and type 1 diabetes in children [9].

Thyroid dysfunction has been reported to be associated with T2DM in a number of studies [10–12]. Some studies have suggested a bidirectional influence of diabetes and thyroid disorders upon each other [10, 13]. The Third National Health and Nutrition Examination Survey (NHANES III), a large cross-sectional survey study which included 17,353 participants in the USA, revealed that hypothyroidism was present in 4.6% of the study population and hyperthyroidism in 1.3% of subjects [14]. In addition, NHANES III found an increased frequency of thyroid dysfunction in subjects with diabetes compared to those without diabetes.

Thyroid hormone has been demonstrated to regulate carbohydrate metabolism and pancreatic function [15]. Conversely, diabetes can variably influence thyroid function. For example, the response of TSH to thyrotropin-releasing hormone has been shown to be impaired in diabetes, leading to hypothyroidism and concomitant lower T3 levels [16]. It has been suggested that lower T3 levels may also be explained by a lower level of

conversion of T3 from T4 in diabetes based on studies of hyperglycemia-induced reversible reduction to deiodinase activity and hepatic concentration of thyroxine [17]. Other studies have suggested that short-term T3 excess may induce insulin resistance; hence leading to T2DM [18, 19].

However, the relationship between thyroid hormone levels and T2DM risk remains highly contested and human studies have demonstrated conflicting findings. Several reports have suggested a positive effect of high TSH and low free thyroxine levels on hyperglycemia and insulin resistance [20–23], but some claimed no relationship found in their researches [24]. Therefore, it has become apparent that a comprehensive evaluation of the association between TSH, free thyroxine, and T2DM is needed. Moreover, virtually all previous analyses have focused on examining the influence of baseline levels of TSH and free thyroxine on the risk of developing T2DM [25–27], but few studies have investigated the dose-response influence of thyroid hormone levels on T2DM risk, so this analysis was conducted here.

Methods

Data sources and searches

All data sources were obtained from the EMBASE and MEDLINE libraries. A systematic search was performed for publications before May 1, 2021, including prospective studies on the association between thyroid function (hormone levels), risk of T2DM, and prospective studies of linkage between thyroid function, CVD, and CVD-related outcomes among T2DM subjects. Keywords included “diabetes,” “type 2 diabetes,” or “T2DM” for T2DM and “subclinical thyroid dysfunction,” “thyroid function,” “hyperthyroidism,” “hypothyroidism” “thyroid-stimulating hormone,” “free thyroxine,” “T3,” or “T4.” The Boolean logical operator AND was used to combine the diabetes and thyroid function terms, and operator OR between terms within those categories. All searches were limited to English language and adults. Additionally, bibliographies of related articles and current review articles were manually screened for potentially relevant articles. The detailed electronic search strategy is shown in the [supplementary file](#).

Study selection

The Preferred Reporting Items for Systematic Reviews and Meta-Analyses (PRISMA) statement was used to report systematic reviews included in this analysis [28]. Prospective observational studies that evaluated the associations between thyroid function (or thyroid hormone) and risk of T2DM were included. Studies that assessed the influence of thyroid function (or hormone levels) on CVD and CVD-related outcomes among T2DM subjects were also included. In order to exclude

publications, the following exclusion criteria were used: (1) not original studies (reviews, meta-analysis, meeting abstracts, editorials, letters, or commentaries); (2) studies which included populations aged less than 18 years or pregnant women; (3) non-prospective study design, including cross-sectional, case-control, or retrospective cohort studies; and (4) studies including the patients with malignancy, severe infectious disease, studies without reporting the odds ratio (OR) or hazard ratio (HR) of the baseline thyroid function or thyroid hormone levels for the risks of T2DM or CVD/CVD-related events among T2DM patients.

For all search results, duplicated articles were removed and a title and abstract review was conducted to exclude obviously irrelevant articles. The remaining articles were screened using a full-text review based on the above inclusion and exclusion criteria to identify eligible articles. Two independent investigators (Y.W. and X.Z.) examined each eligible article and were responsible for determining which publications were included in the final analysis. Any discrepancies would be discussed with a third investigator (F.R.).

Data extraction and quality assessment

Y.W. extracted data along with relevant information from all selected articles and entered it into a standard form. The content included general information of the articles (first author’s name, year published, and country), participants (number of participants and T2DM/CVD/CVD-related cases, sex percentage, race percentage, age range, mean/median/range of BMI, and thyroid medication use), study design (follow-up years, outcomes, adjusted variables, and comparisons). If two articles derived from the same study population both reported HRs/ORs, the one with a larger sample size was selected. The accuracy of the data and information was confirmed by another researcher (F.R.).

The Newcastle-Ottawa Scale (NOS) was applied to assess the quality of identified prospective studies [29]. Three components of the NOS scale, selection, comparability, and outcome were used to rate the studies as low quality (≤ 6 stars) or high quality (> 6 stars).

Data synthesis and analysis

We analyzed the studies for thyroid function/hormone levels and risk of T2DM and the studies relating to the CVD risk with thyroid function among T2DM patients. We estimated the pooled relative risk (RRs) and their corresponding 95% confidence interval (CIs) using the Sidik-Jonkman random-effects model [30]. The between-study heterogeneity was assessed by Cochran’s Q statistic with values of $P < 0.10$ used as the indicator of a statistically significant result. The proportion of heterogeneity was evaluated by the I^2 index ($I^2 > 25\%$ indicates medium or high heterogeneity).

In order to identify the major source of heterogeneity and evaluate the robustness of pooled results, a prespecified subgroup analysis was performed. The subgroup factors included characteristics of study participants including the age of participants (< 60 years, ≥ 60 years, not reported), sex (women $< 50\%$, women $\geq 50\%$, not reported), BMI (normal weight, overweight or obese, not reported), and thyroid medication (thyroid replacement or antithyroid medication) use (no, mixed, not reported); characteristics of study design: study location (Asia, Europe, & the USA, not reported), sample size (\leq median, $>$ median, not reported), and follow-up years (≤ 5 years, > 5 years, not reported); and quality of studies according to the NOS (6, 7, and 8 stars). Publication bias of the included studies was visually explored by funnel plots and examined by Begger’s adjusted rank correlation tests [31].

Additionally, a dose-response meta-analysis was performed in order to evaluate whether there was a dose-response relationship between thyroid function levels,

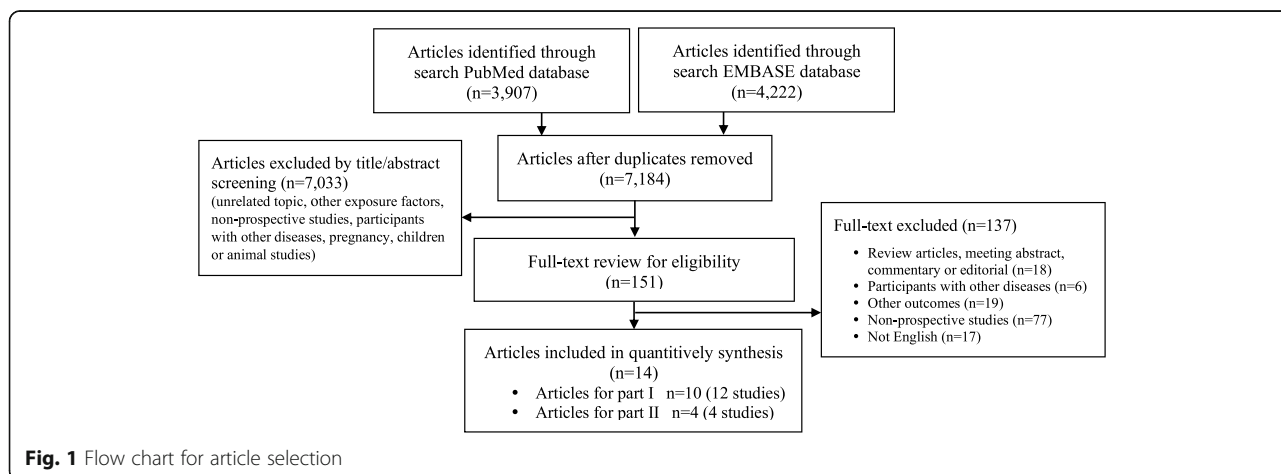


Fig. 1 Flow chart for article selection

Table 1 Study characteristics of 16 prospective observational studies included in the meta-analysis

Author, publication year	Cohort, country	Design, follow-up years	Population, cases/total no. of subjects	Age (years), female (%), and ethnicity	BMI (kg/m ²), thyroid medicine users (%)	Outcomes	Covariates adjusted in models
M Thvilum, 2013 [32]	Official Danish health registers study, Denmark	Prospective cohort study, mean: 6 years	Danish national patient registry population, 1020/14,480	Mean: 58, 84% of women, NR	NR, no	T2DM	Age and sex.
N Gronich, 2015 [2]	NR, Israel	Prospective cohort study, 5–7 years	Statin non-users 3666/20,334	40–80, 62.11% of women, NR	Obesity (43.63%), mixed	DM	Age, sex, race, obesity, smoking, glucose, LDL, HDL, TG, history of hypertension, and drug use.
N Gronich, 2015 [2]	NR, Israel	Prospective cohort study, 5–7 years	Statin users, 4410/39,263	40–80, 62.24% of women, NR	Obesity (44.3%), mixed	DM	Age, sex, race, obesity, smoking, glucose, LDL, HDL, TG, history of hypertension, and drug use.
J-E Jun, 2016 [33]	NR, Korea	Prospective cohort study, 7 years	Population-based, 229/6235	≥ 18, 41.96% of women, NR	Mean (SD): 23.7 (2.56), no	T2DM	Age, sex, BMI, HbA1c, HDL, TG, LDL, smoking, lipid drug use, hypertension, BMI change.
L Mehran, 2016 [34]	Tehran Thyroid Study, Iran	Prospective cohort study, median: 9.73 years	Population-based, NR/2316	≥ 20, NR, NR	Mean (SD): 25.3 (4.3), no	High-fasting blood glucose	Age, sex, smoking, BMI, and HOMA-IR.
L Chaker, 2016 [35]	The Rotterdam Study, Netherlands	Prospective cohort study, mean: 7.9 years	Healthy population-based, 757/8107	Mean: 64.6, 58% of women, NR	Mean (SD): 26.5 (4.05), mixed	DM	Sex, age, smoking, cohort, FSG levels, insulin, SBP, DBP, antihypertensive drugs, HDL cholesterol, and BMI.
C-H Chang, 2017 [27]	NR, China	Prospective cohort study, median: 2.6 years	Population-based, 1551/68,846	Mean: 41.2, 52.5% of women, NR	Obesity (3.2%), no	Dysglycemia, prediabetes, and T2DM	Sex, age, education level, smoking, drinking, and obesity.
N M.Y. Journy, 2017 [36]	U.S. radiologic technologist cohort, USA	Prospective cohort study, median: 28 years	Women, 163/75,076	20–89, 100% of women, multiple	NR, mixed	T2DM deaths	Baseline year, age, race, BMI, family history of breast cancer, lifestyle, reproductive factors.
T. Ittermann, 2017 ^a [37]	Study of Health in Pomerania, Germany	Prospective cohort study, median: 5 years	Population-based, 116/2689	20–79, 51.2% of women, NR	Mean (SD): 27.2 (4.7), mixed	T2DM	Age and sex.
T. Ittermann, 2017 ^a [37]	INTER99, Denmark	Secondary analysis of RCT, 5 years	Population-based, 142/3815	30–60, 49.9% of women, NR	Mean (SD): 26.3 (4.6), NR	T2DM	Age and sex.
T. I. de Vries, 2018 [38]	SMART study, Netherlands	Prospective cohort study, 2.9–8.3 years	With high cardiovascular risk, 289/5542	Mean: 56, 35.24% of women, NR	Mean (SD): 26.72 (4), no	T2DM	Age, sex, current smoking, total and HDL cholesterol, and triglycerides
R-H Chen, 2019 [39]	NR, China	Prospective cohort study, 10 years	Population-based, 5485/91,120	≥ 18, 77.4% of women, NR	Obesity (0.7%), NR	T2DM	Age, sex, and comorbidities.
H-S Chen, 2007 [40]	NR, China	Prospective cohort study, 3–4.3	T2DM patients, CVD: 61, CVD deaths: 12, deaths: 31/556	≥ 30, 35.07% of women,	Mean (SD): 26.11 (9.8), mixed	CVD events, CVD deaths, and all-cause	Age, sex, HbA1c, TC, HDL, BP, BMI, smoking, medication, urinary albumin, creatinine

Table 1 Study characteristics of 16 prospective observational studies included in the meta-analysis (*Continued*)

Author, publication year	Cohort, country	Design, follow-up years	Population, cases/total no. of subjects	Age (years), female (%), and ethnicity	BMI (kg/m ²), thyroid medicine users (%)	Outcomes	Covariates adjusted in models
C Drechsler, 2014 [41]	NR, China	Prospective study, 4 years	Diabetic hemodialysis patients, sudden death: 120 MI: 156, stroke: 70, CV events: 345, deaths: 441/ 934	18-80, 46.26% of women, NR	Mean (SD): 27.6 (4.98), NR	deaths Sudden death, MI, stroke, combined CV events, all-cause death	Age, sex, atorvastatin, SBP, BMI, left ventricular hypertrophy, albumin, creatinine, N-terminal pro2B-type natriuretic peptide, ultrafiltration volume.
J Geng, 2014 [42]	NR, China	Prospective cohort study, 2–3 years	T2DM patients, CHD: 32, new AF: 14, deaths: 10/ 694	Mean: 56.1, 32.75% of women, NR	Mean (SD): 25.13 (3.63), NR	CHD events, new-AF, and all-cause deaths	Age, sex, hypertension, total cholesterol, LDL-cholesterol, smoking, SBP, DBP, and BMI.
T I. de Vries, 2019 [26]	SMART study, Netherlands	Prospective cohort study, 3.3–9.6 years	T2DM patients, CVD: 191, deaths: 204/1265	Mean 61, 26.64% of women, NR	Mean (SD): 29.22 (5), NR	CVD, all-cause deaths	Age, sex, smoking, history of vascular disease, eGFR, SBP, TC, and HDL-C.

Abbreviations: NR not reported, BMI body mass index, DM diabetes mellitus, T2DM type 2 diabetes mellitus, LDL low-density lipoprotein, HDL high-density lipoprotein, TG triacylglycerol, TC cholesterol, AF atrial fibrillation, BP blood pressure, SBP systolic blood pressure, DBP diastolic blood pressure, CVD cardiovascular disease, MI myocardial infarction, CHD coronary heart disease, FSG fasting serum glucose, eGFR estimated glomerular filtration rate

^aThese two studies were extracted from one article

including TSH, FT3, and FT4 concentration, in relation to T2DM. Cubic spline regression models were applied to fit the relation-shapes of thyroid function levels and T2DM using 3 fixed knots at 10%, 50%, and 90% percentiles.

A sensitivity analysis was conducted to evaluate whether results from the individual study could substantially influence the pooled results of thyroid function levels and T2DM.

All analyses were conducted using the R software package (version 3.6.0, R Foundation for Statistical Computing, Vienna, Austria) and Stata (version 14; Stata-Corp, College Station, TX). A two-tailed $P < 0.05$ was considered statistically significant.

Results

Using both electronic and manual searches, a total of 7184 articles were identified after the removal of 945 duplicates. After title/abstract screening, 151 articles were included for further full-text review. Of those, a total of 14 articles were identified for inclusion, among them, 10 articles (12 studies) for analyzing the association between thyroid status and T2DM risk, and an additional 4 articles (4 studies) for evaluating the association between thyroid status and CVD prognosis among T2DM patients (Fig. 1).

Characteristics of included prospective studies

We identified a total of 12 prospective studies from 8 countries in the final analysis of the association between thyroid function levels and risk of T2DM, which comprised 17,828 T2DM cases among 337,823 participants

during a median follow-up of 6 years. All these identified studies were large-scale studies with a sample size ranging from 2316 to 91,120 and were high-quality studies with a NOS quality scale range of 6–8 stars. Most of the studies ($n=10$) focused on the incidence of DM or T2DM, whereas one study evaluated diabetic mortality, and one study measured fasting blood glucose levels. A summary of the included studies is presented in Table 1.

Additionally, 4 studies which prospectively evaluated for CVD were identified, 3 studies from China, and another 1 from the Netherlands. These studies included a total of 3449 T2DM patients with a follow-up of 2.0–9.6 years. The sample sizes ranged from 556 to 1265 and the NOS scale of all studies was 6 stars.

Thyroid function levels and risk of T2DM

Meta-analysis of 12 studies demonstrated that a high baseline TSH level was associated with a 17% higher risk of T2DM (RR 1.17, 95% CI 1.01, 1.36; $I^2=78%$, $P < 0.01$) after a median of 6 years follow-up, when compared with a normal TSH (Fig. 2A). A significant association of low serum FT3 concentrations (RR 1.40, 95% CI 1.09, 1.8; $I^2=59%$, $P = 0.03$) and low FT4 (RR 1.33, 95% CI 1.04, 1.71; $I^2=62%$, $P = 0.02$) with incidence of T2DM were also found (Figs. 3B and 4B). However, low TSH levels (RR 1.00, 95% CI 0.80, 1.25; $I^2=71%$), high FT3 (RR 1.17, 95% CI 0.85, 1.60; $I^2=0%$), and high FT4 (RR 1.08, 95% CI 0.97, 1.19; $I^2=87%$) were found to not be significantly related with T2DM risk (Figs. 2B, 3A, and 4A). Additionally, as continuous variables, TSH (RR 1.02, 95% CI 0.96, 1.09; $I^2=61%$), FT3 (RR 1.16, 95% CI 0.55, 2.44; $I^2=65%$), or FT4 (RR 1.02, 95% CI 0.95, 1.10;

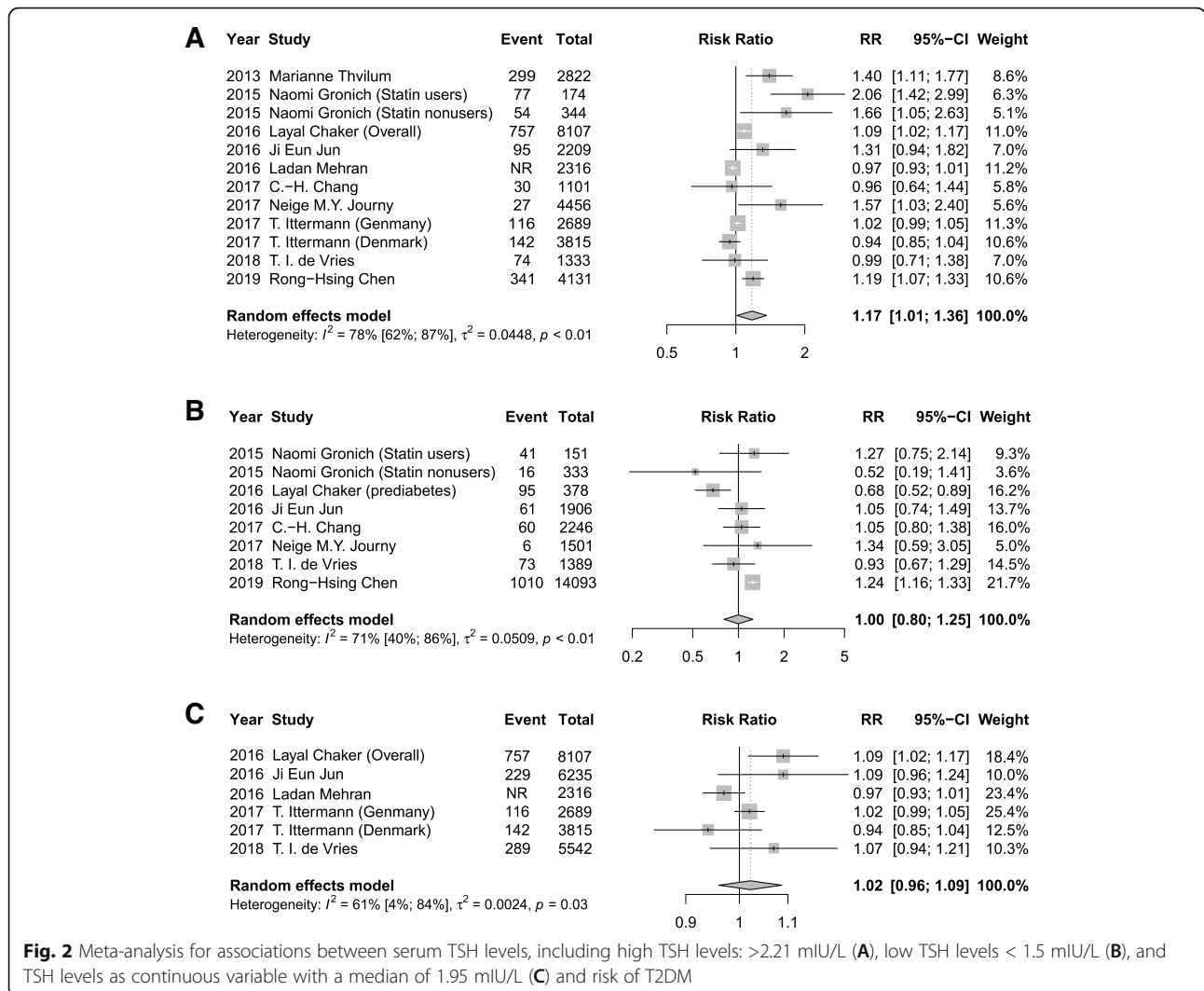


Fig. 2 Meta-analysis for associations between serum TSH levels, including high TSH levels: >2.21 mIU/L (A), low TSH levels < 1.5 mIU/L (B), and TSH levels as continuous variable with a median of 1.95 mIU/L (C) and risk of T2DM

$I^2=88%$) did not significantly correlate with the risk of T2DM (Figs. 2C, 3C, and 4C). No substantial publication bias was detected for any of the above analyses using Begger’s tests.

Dose-response association between thyroid function levels and T2DM risk

In order to further evaluate the dose-response relationship between thyroid function levels and risk of T2DM, 9 studies were analyzed with a regression model. A positive linear relationship between TSH levels and T2DM risk was found. Serum TSH levels above 5.0 mIU/L, the upper limit of normal, conferred a higher risk of T2DM, while each 1 mIU/L increase in serum TSH corresponded to an 11.4% elevation of the risk for T2DM (95% CI 1.052, 1.178) (Fig. 5A, B). A negative linear relationship was found between both FT3 and FT4 levels at T2DM risk. Lower serum FT3/FT4 levels than 2.8/10.75 pmol/L, the lowest concentrations of FT3 and FT4,

respectively, were associated with a high risk of T2DM, and each 1 pmol/L decrease in serum FT3/FT4 related with 23.0% (95% CI 1.149, 1.316) or 16.8% (95% CI 1.099, 1.242) elevation of the T2DM risk, respectively (Fig. 5C-F). After adjustment for variables related to thyroid function, the associations remained consistent and significant.

Subgroup and sensitivity analyses

Due to the limited number of studies included, subgroup analyses on the TSH-T2DM association stratified by age (age < 60 years and ≥ 60 years), sex (women ≥ 50% and women < 50%), study location (Asia and Europe/USA), BMI (normal and overweight/obese), follow-up years (≤ 5 years and > 5 years), thyroid medication users (no, mixed, and not reported), sample size (≤ median and > median), and quality score (6, 7, and 8 stars) were applied. A significant association between high levels of TSH and T2DM was found among studies of

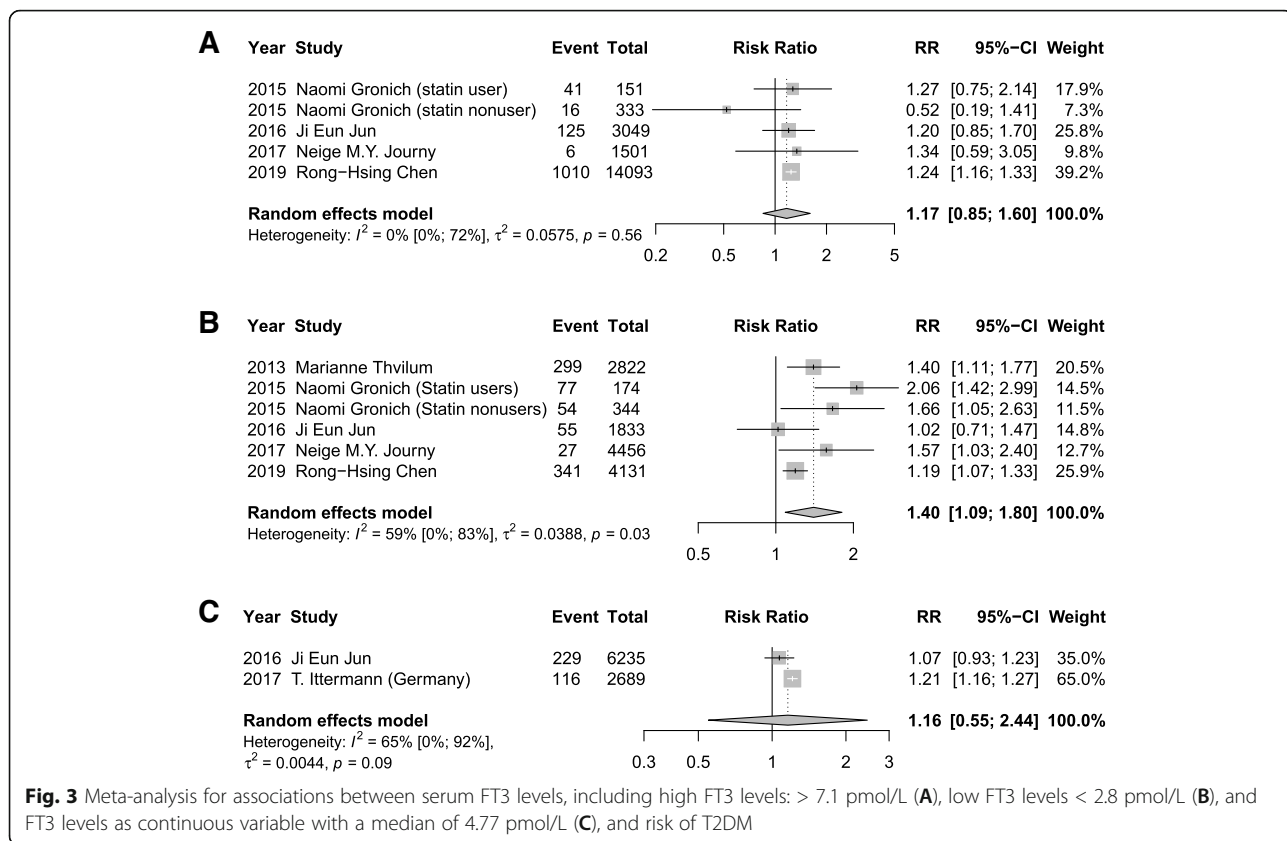


Fig. 3 Meta-analysis for associations between serum FT3 levels, including high FT3 levels: > 7.1 pmol/L (A), low FT3 levels < 2.8 pmol/L (B), and FT3 levels as continuous variable with a median of 4.77 pmol/L (C), and risk of T2DM

participants with normal weight and follow-up years longer than 5 years, but not in those who were overweight or obese or with follow-up years less or equal to 5 years (all *P* values for interaction < 0.05) (Table 2). Additionally, studies which did not report the information on thyroid medication use tended to have a significant association between low levels of TSH and high risk of T2DM, but not in those including both users and non-users [27, 36] (*P* value for interaction = 0.007).

Thyroid function levels and CVD and all-cause death risks among T2DM patients

Meta-analysis of 4 studies which reported CVD outcomes revealed that neither high nor low TSH levels were associated with either CVD risk or all-cause mortality risk (Fig. 6). A relatively high heterogeneity between the 2 studies included for low TSH and CVD risk was detected ($I^2=84\%$, *P* = 0.01). No substantial publication bias was detected for any of the above analyses using Begger's tests ($P_{\text{Begger}} > 0.05$).

Discussion

The goal of our meta-analysis was to evaluate the relationship between thyroid function and T2DM. We found that high TSH and low FT3/FT4 are associated with a higher risk of developing T2DM and that the risk of

T2DM rises in a dose-dependent manner as TSH rises and thyroid hormones decrease. Investigations determined that for each 1 mIU/L elevation in TSH, 1 pmol/L reduction in FT3 or FT4 was associated with either an 11%, 23%, and 16.8% higher risk for T2DM among the normal population, respectively. Thyroid function tests were not associated with CVD or all-cause mortality among T2DM patients; this may be due to the limited number of studies, and additional studies in this area are warranted.

Our results confirmed that hypothyroidism seems to be associated with an elevated risk T2DM. A previous review examined the association between subclinical hypothyroidism and diabetic complications [43] in T2DM. This meta-analysis on 36 case-control and cross-sectional studies found that T2DM patients were more likely to have subclinical hypothyroidism when compared to the general population, and T2DM patients with subclinical hypothyroidism were more likely to have complications (such as diabetic nephropathy, retinopathy, and peripheral neuropathy). Numerous studies have suggested that the diabetes-thyroid relationship might be bidirectional [44]. High insulin levels found in prediabetes and early type 2 diabetes can stimulate thyroid tissue hyperplasia, leading to thyroid enlargement and nodule formation [45, 46]. Thyroid dysfunction may

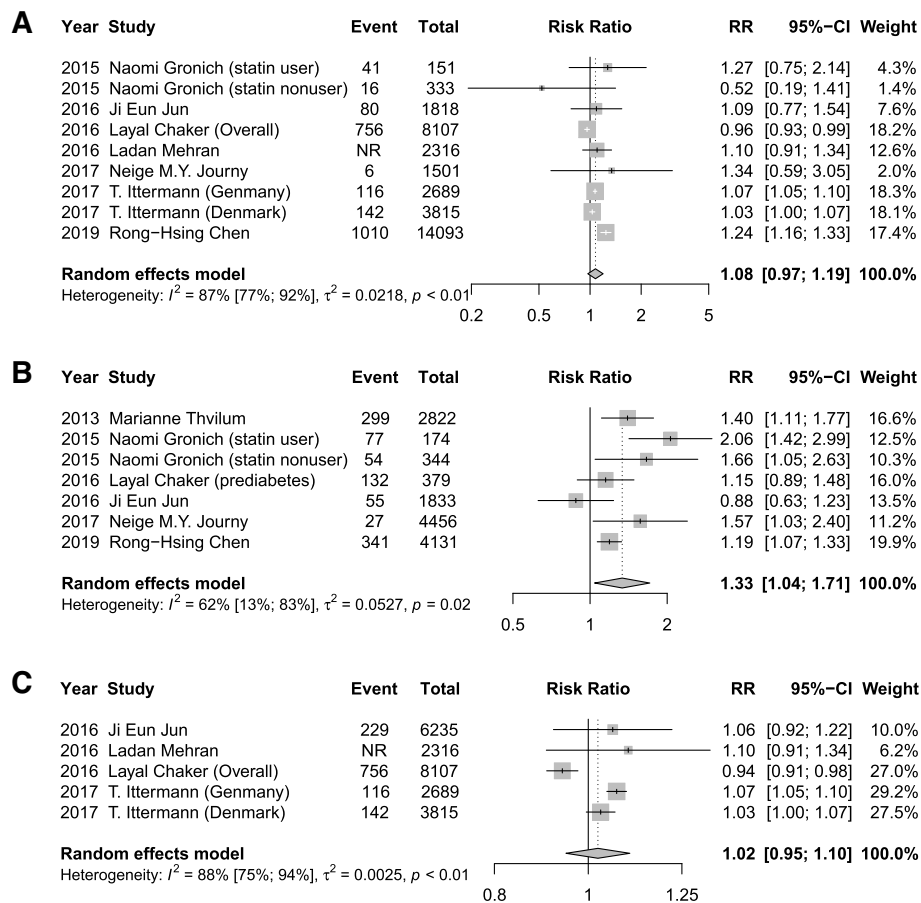


Fig. 4 Meta-analysis for associations between serum FT4 levels, including high FT4 levels: > 27.65 pmol/L (A), low FT4 levels < 15.32 pmol/L (B), and FT4 levels as continuous variable with a median of 17.18 pmol/L (C) and risk of T2DM

in turn affect the glucose metabolism in diabetes. Changes in serum TSH were found to be correlated with changes in glycosylated hemoglobin (HbA1c) [47]. It is reported that improvement of glycemic control was significantly related with a reduction of major cardiovascular events [48]. Since hyperthyroidism may worsen the glucose control in diabetic patients, while hypothyroidism can increase the risk of hypoglycaemia, and therefore, both may increase the risk of cardiovascular disease [49–51]. Nevertheless, we did not observe significant associations of low TSH, high FT3, or high FT4 with risk of T2DM. This could be partially explained by their “J-shaped” or “inverted J-shaped” relationship, indicating a weaker association with low TSH, high FT3, and high FT4, compared with high TSH, low FT3, and low FT4, respectively. Hyper- and hypothyroidism have different underlying mechanisms to impact the glucose homeostasis. Hyperthyroidism could promote hyperglycaemia [52] and reduce the half-life of insulin, leading to an increased rate of degradation and an enhanced release of biologically inactive insulin precursors [18, 53]. As for hypothyroidism, glucose metabolism is affected via a

reduced rate of liver glucose production [54] and the decrease in insulin requirement. The cross-sectional study observed a much higher prevalence of hypothyroidism (~30%) than hyperthyroidism (12%) in diabetes [55]. However, limited directly prospective evidence on which one, hypothyroidism vs. hyperthyroidism, is more likely to develop diabetes, which warrants further evidence from a well-designed prospective study.

A significant body of evidence among T2DM patients suggests that increased age, gender (female), obesity, and thyroid peroxidase antibody positivity are associated with an increased risk of developing hypothyroidism [49, 56–58]. The prevalence of subclinical hypothyroidism is known to increase with age [10–12, 16–19]. Males and females have different propensities for thyroid dysfunction [59], and obesity has been found to be significantly related to hypothyroidism [60]. A meta-analysis of 36 studies confirmed a higher prevalence of subclinical hypothyroidism in females and T2DM patients over age 60 [43]. Furthermore, a cross-sectional observational study among 1508 adult T2DM patients in India found a significant increased risk of hypothyroidism in elderly

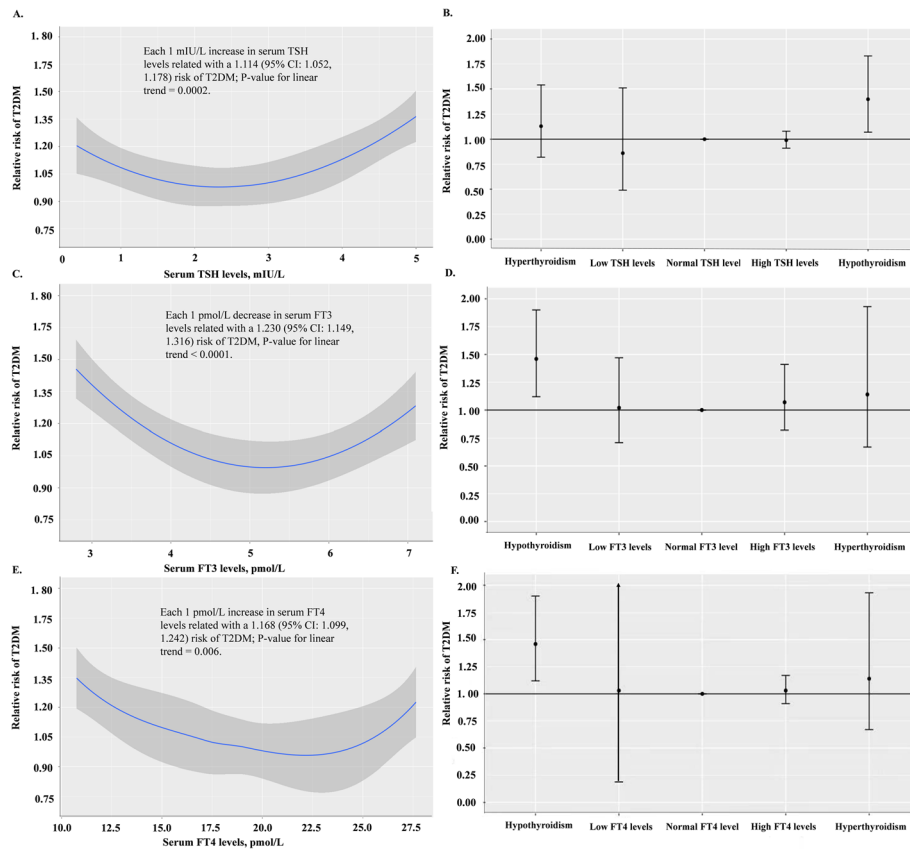


Fig. 5 Dose-response relationship between serum TSH levels and T2DM risk (A, B), serum FT3 levels and T2DM risk (C, D), and serum FT4 levels and T2DM risk (E, F). The nonlinear relation was fitted using a restricted cubic spline regression curve among 9 pr prospective studies

patients with T2DM (> 65 years) with an OR of 4.2, and an overt difference between males and females (OR 4.82 vs. 2.60), and patients with obesity and without obesity (OR 2.56 vs. 3.11) [61]. However, our subgroup analyses found a consistent and positive association between hypothyroidism and risk T2DM regardless of sex (women \geq 50% vs. women < 50%), age (< 60 years vs. \geq 60 years) of participants in the studies, and outcomes (T2DM vs. T2DM & T1DM). The hypothyroidism causes a decrease in basal metabolic rate and thermogenesis and leading a weight increase [62]. As we have known, overweight/obesity is an overt risk of T2DM [63]. It is reasonable to deduce that the association between TSH and T2DM would be stronger among those with overweight or obesity. However, our study showed a conflict result that the association between high TSH and T2DM risk was non-significant among those with overweight/obesity. This might be caused by our BMI subgroups which were only according to the mean BMI levels of all participants since no identified study reported the results for the BMI subgroup and do not represent the exact overweight/obesity population. Similarly, a significant subgroup of medication use was

found; however, the difference between those non-users and mixed users was non-significant. Few studies have explored the sex and age difference in association between thyroid function and T2DM, and those that have did not find any statistical significance [39]. Sex hormones, influenced by age, sex, and BMI status, may further play a complicated role in the T2DM and thyroid function [64]. The mixture of participants with different proportions of age, gender, and BMI groups and a limited number of relevant studies precluded us from evaluating the interaction of these factors.

Both hypothyroidism and hyperthyroidism are able to influence the metabolism of insulin and thus induce insulin resistance [39], suggesting a non-linear, possible U-shaped, relationship between thyroid function and diabetes. An L-shaped relationship between FT4 levels and metabolic syndrome incidence was observed in the prospective population-based Tehran Thyroid Study [65]. Our dose-response analysis of 9 studies depicted a J-shaped relationship with TSH and inverted-J shaped relationship with both FT3 and FT4 levels with T2DM, showing a relatively high risk of T2DM among those with elevated TSH levels and reduced FT3 and FT4

Table 2 Stratified meta-analysis of associations between high TSH and low TSH levels with T2DM risk

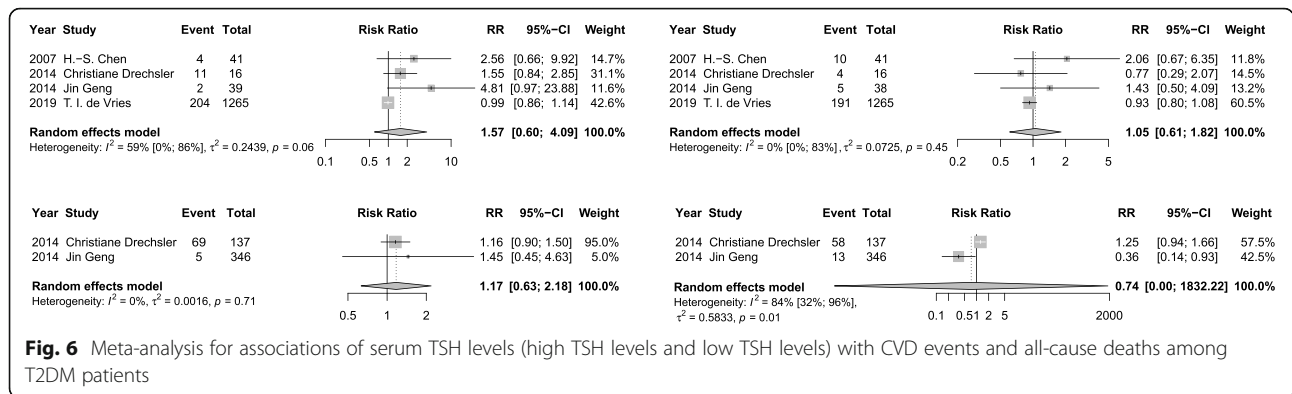
Subgroups	High TSH levels (> 2.21 mIU/L)			Low TSH levels (< 1.5 mIU/L)		
	No. of studies	RR (95% CI)	P value	No. of studies	RR (95% CI)	P value
Age, years^a						
< 60	9	1.104 (0.965; 1.263)	0.182	5	1.113 (0.945; 1.309)	0.299
≥ 60	4	1.376 (1.025; 1.847)		4	0.897 (0.618; 1.302)	
Sex						
Women (≥ 50%)	9	1.252 (1.058; 1.483)	0.065	6	1.003 (0.752; 1.337)	0.521
Women (< 50%)	4	0.978 (0.799; 1.197)		3	1.120 (0.938; 1.337)	
Study location						
Asia	6	1.264 (0.997; 1.604)	0.377	5	1.099 (0.852; 1.417)	0.251
Europe & the USA	6	1.113 (0.955; 1.298)		3	0.851 (0.596; 1.215)	
BMI, kg/m^{2a}						
Normal	2	1.404 (1.072; 1.840)	0.005	2	1.093 (0.780; 1.533)	0.238
Overweight/obese	5	1.009 (0.945; 1.077)		2	0.784 (0.579; 1.062)	
Not Reported	5	1.381 (1.074; 1.777)		4	1.096 (0.785; 1.530)	
Follow-up years						
≤ 5 years	4	1.004 (0.912; 1.105)	0.024	2	1.141 (0.955; 1.363)	0.251
> 5 years	9	1.263 (1.060; 1.505)		7	0.959 (0.757; 1.216)	
Thyroid medicine users						
No	9	1.204 (1.002; 1.447)	0.617	4	0.899 (0.773; 1.045)	0.007
Mixed (yes & no)	4	1.084 (0.900; 1.306)		2	1.076 (0.828; 1.398)	
Not Reported	2	1.057 (0.846; 1.321)		3	1.236 (1.155; 1.322)	
Sample size						
≤ median	6	1.234 (0.953; 1.599)	0.587	3	0.844 (0.592; 1.202)	0.071
> median	6	1.138 (0.989; 1.309)		5	1.190 (1.058; 1.340)	
Quality score						
6 stars	4	1.127 (0.940; 1.350)	0.240	3	1.156 (0.942; 1.419)	0.405
7 stars	5	1.075 (0.908; 1.272)		2	1.050 (0.845; 1.304)	
8 stars	3	1.502 (1.057; 2.134)		3	0.806 (0.490; 1.326)	
Outcomes						
T2DM	5	1.059 (0.944; 1.188)	0.127	4	0.970 (0.750; 1.256)	0.722
T2DM & T1DM	7	1.297 (1.048; 1.606)		4	1.057 (0.711; 1.574)	

^aAge and BMI categories were divided according to the means of age and BMI levels reported by studies

levels. The range of the thyroid function levels in most of the included studies was a semi-closed interval, with values only on one side of the reference range. We hypothesize that this might be a reason why we did not detect a U-shaped relationship. There appears to be a positive linear relationship between TSH and risk of T2DM even within the normal reference range according to a 7-year longitudinal study on 6235 euthyroid subjects without pre-existing T2DM [25]. These results suggest that lower levels of thyroid hormone might contribute to a higher risk of insulin resistance and diabetes [66, 67]. We assessed the influence of thyroid function

on CVD among T2DM patients and did not find an association, though this was based on only 4 studies.

In this study, we conducted a comprehensive meta-analysis of prospective studies in order to evaluate the association between thyroid function and T2DM and CVD prognosis of T2DM patients. All studies included were sufficiently high-quality with an NOS score of ≥ 6 points and had large sample sizes (range: 556–91,120). In addition, a subgroup analysis stratified by prespecified factors and a sensitivity analysis was conducted to explore and evaluate the potential heterogeneity. Several limitations merit consideration. First, most of the studies



included for evaluating the progress of T2DM were from China and more well-designed, large-scale, and long follow-up studies should be included in any future analyses. Second, only a few studies reported the glucose levels and evaluated the relations between thyroid function and glucose levels. Third, most studies did not distinguish between type 1 and type 2 diabetes. Additionally, only one study [35] evaluated thyroid peroxidase antibody titers. Finally, publication bias and residual confounders inherent in observational studies also merit further consideration.

Conclusion

In summary, our meta-analysis demonstrated that thyroid dysfunction is associated with an increased risk of T2DM. There was no evidence that thyroid dysfunction was associated with CVD events and all-cause mortality in T2DM, though limited studies were available. Therefore, measuring TSH in patients with risk factors for diabetes may help further assess the risk for the development of T2DM.

Abbreviations

CI: Confidence interval; CVD: Cardiovascular disease; HbA1c: Glycated hemoglobin; HR: Hazard ratio; NHANES III: Third National Health and Nutrition Examination Survey; NOS: Newcastle-Ottawa Scale; OR: Odds ratio; PRISMA: Preferred Reporting Items for Systematic Reviews and Meta-Analyses; RR: Relative risk; T2DM: Type 2 diabetes mellitus (T2DM); T3: Triiodothyronine; T4: Thyroxine; TSH: Thyroid-stimulating hormone

Supplementary Information

The online version contains supplementary material available at <https://doi.org/10.1186/s12916-021-02121-2>.

Additional file 1.

Acknowledgements

We would like to thank Dr. Qin Gao (Department of Traditional Chinese Medicine, Shanghai Tongji Hospital, Tongji University School of Medicine) and Dr. Zhaoxi Wang (Beth Israel Deaconess Medical Centre/Harvard Medical School) for their helpful comments that improved this manuscript.

Authors' contributions

XZ and FR designed and conducted the research; YWW and FR extract and validate the data. XZ and HJD analyzed the data and had primary responsibility for the final content of the manuscript, XZ, FR, HJD, HBC, GPL, YWW, and JBL wrote the paper. The authors read and approved the final manuscript.

Funding

None.

Availability of data and materials

All data generated or analyzed during this study are included in this published article.

Declarations

Ethics approval and consent to participate

Not applicable.

Consent for publication

Not applicable.

Competing interests

The authors declare that they have no competing interests.

Author details

¹School of Public Health, Shanghai University of Traditional Chinese Medicine, Shanghai, China. ²Department of Epidemiology and Biostatistics, National Clinical Research Center for Cancer, Key Laboratory of Molecular Cancer Epidemiology of Tianjin, Tianjin Medical University Cancer Institute and Hospital, Tianjin Medical University, Tianjin, China. ³Department of Pediatrics, Xin Hua Hospital, Shanghai Jiao Tong University School of Medicine, Shanghai, China. ⁴Department of Clinical Research, Sun Yat-sen University Cancer Center, State Key Laboratory of Oncology in Southern China, Collaborative Innovation Center for Cancer Medicine, Guangzhou, China. ⁵School of Basic Medical Sciences, Shanghai University of Traditional Chinese Medicine, 201203 Shanghai, China. ⁶Department of Endocrinology, Xin Hua Hospital, Shanghai Jiao Tong University School of Medicine, No. 1665 Kongjiang Road, Shanghai 200092, China. ⁷Clinical Research Unit, Xin Hua Hospital, Shanghai Jiao Tong University School of Medicine, No. 1665 Kongjiang Road, Shanghai 200092, China.

Received: 12 May 2021 Accepted: 9 September 2021

Published online: 21 October 2021

References

- Hu C, Jia W. Diabetes in China: epidemiology and genetic risk factors and their clinical utility in personalized medication. *Diabetes*. 2018;67(1):3–11.
- Gronich N, Deftereos SN, Lavi I, Persidis AS, Abernethy DR, Rennert G. Hypothyroidism is a risk factor for new-onset diabetes: a cohort study. *Diabetes Care*. 2015;38(9):1657–64.
- Canaris GJ, Manowitz NR, Mayor G, Ridgway EC. The Colorado thyroid disease prevalence study. *Arch Intern Med*. 2000;160(4):526–34.

4. Cooper DS, Biondi B. Subclinical thyroid disease. *Lancet*. 2012;379(9821):1142–54.
5. Surks MI, Ortiz E, Daniels GH, Sawin CT, Col NF, Cobin RH, et al. Subclinical thyroid disease: scientific review and guidelines for diagnosis and management. *JAMA*. 2004;291(2):228–38.
6. Razi S, Weaver JU, Pearce SH. Subclinical thyroid disorders: significance and clinical impact. *J Clin Pathol*. 2010;63(5):379–86.
7. Collet TH, Gussekloo J, Bauer DC, den Elzen WP, Cappola AR, Balmer P, et al. Subclinical hyperthyroidism and the risk of coronary heart disease and mortality. *Arch Intern Med*. 2012;172(10):799–809.
8. Chuang MH, Liao KM, Hung YM, Wang PY, Chou YC, Chou P. Abnormal thyroid-stimulating hormone and chronic kidney disease in elderly adults in Taipei City. *J Am Geriatr Soc*. 2016;64(6):1267–73.
9. Bellastella G, Maiorino MI, Scappaticcio L, Casciano O, Petrizzo M, Caputo M, et al. TSH oscillations in young patients with type 1 diabetes may be due to glycemic variability. *J Endocrinol Invest*. 2018;41(4):389–93.
10. Feely J, Isles TE. Screening for thyroid dysfunction in diabetics. *Br Med J*. 1979;1(6179):1678.
11. Ghazali SM, Abbiyesuku FM. Thyroid dysfunction in type 2 diabetics seen at the University College Hospital, Ibadan, Nigeria. *Niger J Physiol Sci*. 2010;25(2):173–9.
12. Blanc E, Ponce C, Brodschi D, Nepote A, Barreto A, Schnitman M, et al. Association between worse metabolic control and increased thyroid volume and nodular disease in elderly adults with metabolic syndrome. *Metab Syndr Relat Disord*. 2015;13(5):221–6.
13. Gray RS, Irvine WJ, Clarke BF. Screening for thyroid dysfunction in diabetics. *Br Med J*. 1979;2(6202):1439.
14. Hollowell JG, Staehling NW, Flanders WD, Hannon WH, Gunter EW, Spencer CA, et al. Serum TSH, T(4), and thyroid antibodies in the United States population (1988 to 1994): National Health and Nutrition Examination Survey (NHANES III). *J Clin Endocrinol Metab*. 2002;87(2):489–99.
15. Mullur R, Liu YY, Brent GA. Thyroid hormone regulation of metabolism. *Physiol Rev*. 2014;94(2):355–82.
16. TE Gursoy NT. The relationship between the glycaemic control and hypothalamus-pituitary-thyroid axis in diabetic patients. *Turkish J Endocrinol Metab*. 1999;12:163–8.
17. Hage M, Zantout MS, Azar ST. Thyroid disorders and diabetes mellitus. *J Thyroid Res*. 2011;2011:439463.
18. Dimitriadis G, Baker B, Marsh H, Mandarino L, Rizza R, Bergman R, et al. Effect of thyroid hormone excess on action, secretion, and metabolism of insulin in humans. *Am J Physiol*. 1985;248(5 Pt 1):E593–601.
19. Solá E, Morillas C, Garzón S, Gómez-Balaguer M, Hernández-Mijares A. Association between diabetic ketoacidosis and thyrotoxicosis. *Acta Diabetol*. 2002;39(4):235–7.
20. Roos A, Bakker SJ, Links TP, Gans RO, Wolffenbuttel BH. Thyroid function is associated with components of the metabolic syndrome in euthyroid subjects. *J Clin Endocrinol Metab*. 2007;92(2):491–6.
21. Mehran L, Amouzegar A, Tohidi M, Moayedi M, Azizi F. Serum free thyroxine concentration is associated with metabolic syndrome in euthyroid subjects. *Thyroid*. 2014;24(11):1566–74.
22. Luna-Vazquez F, Cruz-Lumbreras R, Rodríguez-Castelán J, Cervantes-Rodríguez M, Rodríguez-Antolín J, Arroyo-Helguera O, et al. Association between the serum concentration of triiodothyronine with components of metabolic syndrome, cardiovascular risk, and diet in euthyroid post-menopausal women without and with metabolic syndrome. *Springerplus*. 2014;3:266.
23. De Pergola G, Ciampolillo A, Alò D, Sciaraffia M, Guida P. Free triiodothyronine is associated with smoking habit, independently of obesity, body fat distribution, insulin, and metabolic parameters. *J Endocrinol Invest*. 2010;33(11):815–8.
24. Bakiner O, Bozkirli E, Cavlak G, Ozsahin K, Ertoer E. Are plasma thyroid-stimulating hormone levels associated with degree of obesity and metabolic syndrome in euthyroid obese patients? A Turkish cohort study. *ISRN Endocrinol*. 2014;2014:803028.
25. Jun JE, Jee JH, Bae JC, Jin SM, Hur KY, Lee MK, et al. Association between changes in thyroid hormones and incident type 2 diabetes: a seven-year longitudinal study. *Thyroid*. 2017;27(1):29–38.
26. de Vries TI, Kappelle LJ, van der Graaf Y, de Valk HW, de Borst GJ, Nathoe HM, et al. Thyroid-stimulating hormone levels in the normal range and incident type 2 diabetes mellitus. *Acta Diabetol*. 2019;56(4):431–40.
27. Chang CH, Yeh YC, Shih SR, Lin JW, Chuang LM, Caffrey JL, et al. Association between thyroid dysfunction and dysglycaemia: a prospective cohort study. *Diabet Med*. 2017;34(11):1584–90.
28. Liberati A, Altman DG, Tetzlaff J, Mulrow C, Gøtzsche PC, Ioannidis JP, et al. The PRISMA statement for reporting systematic reviews and meta-analyses of studies that evaluate health care interventions: explanation and elaboration. *PLoS Med*. 2009;6(7):e1000100.
29. Coding Manual for Cohort Studies. https://www.ohri.ca/programs/clinical_epidemiology/nos_manual.pdf. Accessed 21 Mar 2021.
30. Kurex Sidik JNJ. Simple heterogeneity variance estimation for meta-analysis. *Appl Stat*. 2005;54(2):367–84.
31. Begg CB, Mazumdar M. Operating characteristics of a rank correlation test for publication bias. *Biometrics*. 1994;50(4):1088–101.
32. Thvilum M, Brandt F, Almind D, Christensen K, Brix TH, Hegedüs L. Type and extent of somatic morbidity before and after the diagnosis of hypothyroidism: a nationwide register study. *PLoS One*. 2013;8(9):e75789.
33. Jun JE, Jee JH, Bae JC, Jin SM, Hur KY, Lee MK et al. Association Between Changes in Thyroid Hormones and Incident Type 2 Diabetes: A Seven-Year Longitudinal Study. *Thyroid*. 2017;27(1):29–38.
34. Mehran L, Amouzegar A, Bakhtiyari M, Mansournia MA, Rahimabad PK, Tohidi M et al. Variations in Serum Free Thyroxine Concentration Within the Reference Range Predicts the Incidence of Metabolic Syndrome in Non-Obese Adults: A Cohort Study. *Thyroid*. 2017;27(7):886–93.
35. Chaker L, Ligthart S, Korevaar TI, Hofman A, Franco OH, Peeters RP, et al. Thyroid function and risk of type 2 diabetes: a population-based prospective cohort study. *BMC Med*. 2016;14(1):150.
36. Journy NMY, Bernier MO, Doody MM, Alexander BH, Linet MS, Kitahara CM. Hyperthyroidism, hypothyroidism, and cause-specific mortality in a large cohort of women. *Thyroid*. 2017;27(8):1001–10.
37. Ittermann T, Schipf S, Dörr M, Thuesen BH, Jørgensen T, Völzke H et al. Hyperthyroxinemia is positively associated with prevalent and incident type 2 diabetes mellitus in two population-based samples from Northeast Germany and Denmark. *Nutr Metab Cardiovasc Dis*. 2018;28(2):173–9.
38. de Vries TI, Kappelle LJ, van der Graaf Y, de Valk HW, de Borst GJ, Nathoe HM et al. Thyroid-stimulating hormone levels in the normal range and incident type 2 diabetes mellitus. *Acta Diabetol*. 2019;56(4):431–40.
39. Chen RH, Chen HY, Man KM, Chen SJ, Chen W, Liu PL, et al. Thyroid diseases increased the risk of type 2 diabetes mellitus: a nation-wide cohort study. *Medicine (Baltimore)*. 2019;98(20):e15631.
40. Chen HS, Wu TE, Jap TS, Lu RA, Wang ML, Chen RL et al. Subclinical hypothyroidism is a risk factor for nephropathy and cardiovascular diseases in Type 2 diabetic patients. *Diabet Med*. 2007;24(12):1336–44.
41. Drechsler C, Schneider A, Gutjahr-Lengsfeld L, Kroiss M, Carrero JJ, Krane V, et al. Thyroid function, cardiovascular events, and mortality in diabetic hemodialysis patients. *Am J Kidney Dis*. 2014;63(6):988–96.
42. Geng J, Hu T, Wang B, Lu W, Ma S. Thyroid stimulating hormone levels and risk of coronary heart disease in patients with type 2 diabetes mellitus. *Int J Cardiol*. 2014;174(3):851–3.
43. Han C, He X, Xia X, Li Y, Shi X, Shan Z, et al. Subclinical hypothyroidism and type 2 diabetes: a systematic review and meta-analysis. *PLoS One*. 2015;10(8):e0135233.
44. Teixeira P, Dos Santos PB, Pazos-Moura CC. The role of thyroid hormone in metabolism and metabolic syndrome. *Ther Adv Endocrinol Metab*. 2020;11:2042018820917869.
45. Zhang HM, Feng QW, Niu YX, Su Q, Wang X. Thyroid nodules in type 2 diabetes mellitus. *Curr Med Sci*. 2019;39(4):576–81.
46. Tang Y, Yan T, Wang G, Chen Y, Zhu Y, Jiang Z, et al. Correlation between insulin resistance and thyroid nodule in type 2 diabetes mellitus. *Int J Endocrinol*. 2017;2017:1617458.
47. Jun JE, Jin SM, Jee JH, Bae JC, Hur KY, Lee MK, et al. TSH increment and the risk of incident type 2 diabetes mellitus in euthyroid subjects. *Endocrine*. 2017;55(3):944–53.
48. Giugliano D, Bellastella G, Longo M, Scappaticcio L, Maiorino MI, Chiodini P, et al. Relationship between improvement of glycaemic control and reduction of major cardiovascular events in 15 cardiovascular outcome trials: a meta-analysis with meta-regression. *Diabetes Obes Metab*. 2020;22(8):1397–405.
49. Chen G, Wu J, Lin Y, Huang B, Yao J, Jiang Q, et al. Associations between cardiovascular risk, insulin resistance, beta-cell function and thyroid dysfunction: a cross-sectional study in the ethnic minority group of Fujian Province in China. *Eur J Endocrinol*. 2010;163(5):775–82.
50. Lillevang-Johansen M, Abrahamsen B, Jørgensen HL, Brix TH, Hegedüs L. Duration of hyperthyroidism and lack of sufficient treatment are associated with increased cardiovascular risk. *Thyroid*. 2019;29(3):332–40.

51. Dekkers OM, Horváth-Puhó E, Cannegieter SC, Vandenbroucke JP, Sørensen HT, Jørgensen JO. Acute cardiovascular events and all-cause mortality in patients with hyperthyroidism: a population-based cohort study. *Eur J Endocrinol*. 2017;176(1):1–9.
52. Maxon HR, Kreines KW, Goldsmith RE, Knowles HC Jr. Long-term observations of glucose tolerance in thyrotoxic patients. *Arch Intern Med*. 1975;135(11):1477–80.
53. O'Meara NM, Blackman JD, Sturis J, Polonsky KS. Alterations in the kinetics of C-peptide and insulin secretion in hyperthyroidism. *J Clin Endocrinol Metab*. 1993;76(1):79–84.
54. Okajima F, Ui M. Metabolism of glucose in hyper- and hypo-thyroid rats in vivo. Glucose-turnover values and futile-cycle activities obtained with ¹⁴C- and ³H-labelled glucose. *Biochem J*. 1979;182(2): 565–75.
55. Wu P. Thyroid Disease and Diabetes. *Clin Diabetes*. 2000;18(1):38–9.
56. Chubb SA, Davis WA, Inman Z, Davis TM. Prevalence and progression of subclinical hypothyroidism in women with type 2 diabetes: the Fremantle Diabetes Study. *Clin Endocrinol (Oxf)*. 2005;62(4):480–6.
57. Al-Geffari M, Ahmad NA, Al-Sharqawi AH, Youssef AM, Alnaqeb D, Al-Rubeaan K. Risk factors for thyroid dysfunction among type 2 diabetic patients in a highly diabetes mellitus prevalent society. *Int J Endocrinol*. 2013;2013:417920.
58. Díez JJ, Iglesias P. An analysis of the relative risk for hypothyroidism in patients with type 2 diabetes. *Diabet Med*. 2012;29(12):1510–4.
59. Vanderpump MP, Tunbridge WM, French JM, Appleton D, Bates D, Clark F, et al. The incidence of thyroid disorders in the community: a twenty-year follow-up of the Wickham Survey. *Clin Endocrinol (Oxf)*. 1995;43(1):55–68.
60. Song RH, Wang B, Yao QM, Li Q, Jia X, Zhang JA. The impact of obesity on thyroid autoimmunity and dysfunction: a systematic review and meta-analysis. *Front Immunol*. 2019;10:2349.
61. Song F, Bao C, Deng M, Xu H, Fan M, Paillard-Borg S, et al. The prevalence and determinants of hypothyroidism in hospitalized patients with type 2 diabetes mellitus. *Endocrine*. 2017;55(1):179–85.
62. Rotondi M, Leporati P, La Manna A, Pirali B, Mondello T, Fonte R, et al. Raised serum TSH levels in patients with morbid obesity: is it enough to diagnose subclinical hypothyroidism? *Eur J Endocrinol*. 2009;160(3):403–8.
63. Igel LI, Saunders KH, Fins JJ. Why weight? An analytic review of obesity management, diabetes prevention, and cardiovascular risk reduction. *Curr Atheroscler Rep*. 2018;20(8):39.
64. Garduño-García Jde J, Alvirde-García U, López-Carrasco G, Padilla Mendoza ME, Mehta R, Arellano-Campos O, et al. TSH and free thyroxine concentrations are associated with differing metabolic markers in euthyroid subjects. *Eur J Endocrinol*. 2010;163(2):273–8.
65. Mehran L, Amouzegar A, Bakhtiyari M, Mansournia MA, Rahimabad PK, Tohidi M, et al. Variations in serum free thyroxine concentration within the reference range predicts the incidence of metabolic syndrome in non-obese adults: a cohort study. *Thyroid*. 2017;27(7):886–93.
66. Kim SR, Tull ES, Talbott EO, Vogt MT, Kuller LH. A hypothesis of synergism: the interrelationship of T3 and insulin to disturbances in metabolic homeostasis. *Med Hypotheses*. 2002;59(6):660–6.
67. Yavuz DG, Yüksel M, Deyneli O, Ozen Y, Aydin H, Akalin S. Association of serum paraoxonase activity with insulin sensitivity and oxidative stress in hyperthyroid and TSH-suppressed nodular goitre patients. *Clin Endocrinol (Oxf)*. 2004;61(4):515–21.

Publisher's Note

Springer Nature remains neutral with regard to jurisdictional claims in published maps and institutional affiliations.

Ready to submit your research? Choose BMC and benefit from:

- fast, convenient online submission
- thorough peer review by experienced researchers in your field
- rapid publication on acceptance
- support for research data, including large and complex data types
- gold Open Access which fosters wider collaboration and increased citations
- maximum visibility for your research: over 100M website views per year

At BMC, research is always in progress.

Learn more biomedcentral.com/submissions

