

RESEARCH ARTICLE

Open Access



# Access to personal protective equipment in healthcare workers during the COVID-19 pandemic in the United Kingdom: results from a nationwide cohort study (UK-REACH)

Christopher A. Martin<sup>1,2†</sup>, Daniel Pan<sup>1,2†</sup>, Joshua Nazareth<sup>1,2†</sup>, Avinash Aujayeb<sup>3</sup>, Luke Bryant<sup>1</sup>, Sue Carr<sup>4,5</sup>, Laura J. Gray<sup>6</sup>, Bindu Gregory<sup>7</sup>, Amit Gupta<sup>8</sup>, Anna L. Guyatt<sup>6</sup>, Alan Gopal<sup>9</sup>, Thomas Hine<sup>8</sup>, Catherine John<sup>6</sup>, I Chris McManus<sup>10</sup>, Carl Melbourne<sup>6</sup>, Laura B. Nellums<sup>11</sup>, Rubina Reza<sup>12</sup>, Sandra Simpson<sup>13</sup>, Martin D. Tobin<sup>6</sup>, Katherine Woolf<sup>10</sup>, Stephen Zingwe<sup>14</sup>, Kamlesh Khunti<sup>15</sup>, Manish Pareek<sup>1,2\*</sup> and On behalf of the UK-REACH Study Collaborative Group

## Abstract

**Background:** Healthcare workers (HCWs) are at high risk of SARS-CoV-2 infection. Effective use of personal protective equipment (PPE) reduces this risk. We sought to determine the prevalence and predictors of self-reported access to appropriate PPE (aPPE) for HCWs in the UK during the COVID-19 pandemic.

**Methods:** We conducted cross sectional analyses using data from a nationwide questionnaire-based cohort study administered between December 2020–February 2021. The outcome was a binary measure of self-reported aPPE (access all of the time vs access most of the time or less frequently) at two timepoints: the first national lockdown in the UK in March 2020 (primary analysis) and at the time of questionnaire response (secondary analysis).

**Results:** Ten thousand five hundred eight HCWs were included in the primary analysis, and 12,252 in the secondary analysis. 35.2% of HCWs reported aPPE at all times in the primary analysis; 83.9% reported aPPE at all times in the secondary analysis. In the primary analysis, after adjustment (for age, sex, ethnicity, migration status, occupation, aerosol generating procedure exposure, work sector and region, working hours, night shift frequency and trust in employing organisation), older HCWs and those working in Intensive Care Units were more likely to report aPPE at all times. Asian HCWs (aOR:0.77, 95%CI 0.67–0.89 [vs White]), those in allied health professional and dental roles (vs those in medical roles), and those who saw a higher number of COVID-19 patients compared to those who saw none ( $\geq 21$  patients/week 0.74, 0.61–0.90) were less likely to report aPPE at all times. Those who trusted their employing organisation to deal with concerns about unsafe clinical practice, compared to those who did not, were twice as likely to report aPPE at all times. Significant predictors were largely unchanged in the secondary analysis.

<sup>†</sup>Christopher A. Martin, Daniel Pan and Joshua Nazareth are joint first authors.

\*Correspondence: mp426@le.ac.uk

<sup>1</sup> Department of Respiratory Sciences, University of Leicester, Leicester, UK  
Full list of author information is available at the end of the article



**Conclusions:** Only a third of HCWs in the UK reported aPPE at all times during the first lockdown and that aPPE had improved later in the pandemic. We also identified key determinants of aPPE during the first UK lockdown, which have mostly persisted since lockdown was eased. These findings have important implications for the safe delivery of healthcare during the pandemic.

**Keywords:** Healthcare worker, Personal protective equipment, PPE, COVID-19, Ethnicity

## Introduction

As of August 2021, over 6 million people in the United Kingdom (UK) have been infected with Severe Acute Respiratory Syndrome Coronavirus-2 (SARS-CoV-2) leading to substantial morbidity, mortality and demands on health services [1]. Healthcare workers (HCWs) are at significantly higher risk of infection than the general population [2].

Effective use of personal protective equipment (PPE) might prevent SARS-CoV-2 transmission [3], however, large numbers of HCWs in the UK have become infected with SARS-CoV-2 whilst working on the frontline. Public Health England estimated that 73% of infections in UK HCWs during the first wave of the COVID-19 pandemic were due to nosocomial transmission [4]; Amnesty International reported in December 2020 that the UK had the second highest rate of COVID-19 related deaths in HCWs in the world [5]. Anecdotal reports exist of limited access to PPE by HCWs and a survey of UK doctors conducted by the British Medical Association during the first wave of the pandemic found that there were self-reported shortages of PPE in both primary and secondary care, however to date, no large studies have examined the issue of PPE availability in detail [6].

Accordingly, using data from the United Kingdom Research study into Ethnicity And COVID-19 outcomes in Healthcare workers (UK-REACH), we conducted cross sectional analyses of self-reported access to appropriate PPE in a cohort of HCWs at two timepoints during the COVID-19 pandemic in the UK. We sought to determine the occupational and demographic predictors of PPE access, hypothesising that PPE access was not equivalent across HCWs working in the UK and that some HCW groups had more limited access to PPE than others.

## Methods

### Overview

The United Kingdom Research study into Ethnicity And COVID-19 Outcomes in Healthcare workers (UK-REACH), incorporates six studies which aim to establish the impact of the COVID-19 pandemic on UK HCWs, particularly those from ethnic minority groups. This analysis utilises data generated by the baseline questionnaire of the UK-REACH prospective nationwide cohort

study. The cohort study has been described in the published study protocol as well as in previous work using the same dataset [7, 8]. Details of the measures included in the questionnaire can be found in the data dictionary (<https://www.uk-reach.org/data-dictionary>).

### Study population

We included National Health Service (NHS) and non-NHS HCWs (including ancillary workers in a healthcare setting) aged 16 years or older and/or registered with one of seven UK professional healthcare regulatory bodies (see [supplementary information](#) for a list of participating regulators).

### Recruitment

We have previously described recruitment into the cohort study [7, 8]. Briefly, between 4<sup>th</sup> December 2020 and 8<sup>th</sup> March 2021, emails with a link to the study website were distributed to HCWs by professional regulators and recruited NHS sites. To take part, eligible HCWs had to visit the website, create a user profile and provide informed consent. The sample was supplemented by recruitment of participants directly through healthcare trusts and advertising on social media / newsletters. We report participation rates as recommended by the Checklist for Reporting Results of Internet E-Surveys (CHERRIES) [9, 10].

### Outcome measures

The main outcome measure was access to PPE at two timepoints (see below). We derived a binary measure from a questionnaire item concerning how often a HCW reported access to appropriate PPE with answers on a five point scale (“not at all” through to “all the time”).

For the main analyses we categorised HCWs as either reporting access to appropriate PPE at all times or lacking access to appropriate PPE at least some of the time. We derived a separate binary measure from a different threshold (most of the time or more often vs some of the time or less often) and used this in sensitivity analyses (see [Supplementary Table 1](#) for the derivation of both measures). We asked participants about PPE access at two timepoints:

1. At the start of the first national lockdown in the UK (23<sup>rd</sup> March 2020) – used as an outcome measure in the primary analysis
2. At the time of answering the questionnaire (December 2020 – March 2021) – used as an outcome measure in the secondary analysis

### Covariates

We selected predictor variables that might be associated with the outcome a priori, based on existing literature and expert opinion. These are detailed below:

- Demographic characteristics (age, sex, ethnicity [5 categories used by the Office for National Statistics], migration status) [11].
- Occupational factors (job role, area of work, number of confirmed/suspected COVID-19 patients seen per week, exposure to aerosol generating procedures [AGPs], hours worked per week and night shift frequency).
- UK region of workplace.
- Trust in employer to address a concern about unsafe clinical practice – a binary measure derived from a question adapted from the NHS staff survey [12].

Occupational variables used in the analyses reflect the participants' occupational circumstances during the first national lockdown in the UK for the primary analysis or at the time they answered the questionnaire for the secondary analysis. Participants could select multiple, non-mutually exclusive areas in which they work, and therefore the work areas variables are coded as 'dummy' variables (i.e. all those that selected that area vs all those that did not).

A description of each variable and how it was derived from questionnaire responses can be found in Supplementary Table 2.

### Statistical analysis

Participants with missing outcome data, and those who answered 'not applicable' to the question around PPE access were excluded. This was because these HCWs were not likely to require PPE as part of their healthcare role and therefore should not be included in the present analyses. Participants not working during lockdown or at the time of questionnaire response were excluded from the primary and secondary analyses respectively, so that the relevant occupational predictors could be included in the models.

Categorical variables were summarised as count and percentage, and non-normally distributed continuous variables as median and interquartile range (IQR).

Logistic regression was used to derive unadjusted and adjusted odds ratios (ORs and aOR) describing the relation between covariates and PPE access.

Multiple imputation was used to replace missing data in all logistic regression models. Rubin's Rules were used to combine the parameter estimates and standard errors from 10 imputations into a single set of results [13]. To ensure the use of multiple imputation did not significantly affect our results we performed a sensitivity analysis using only complete cases. All analyses were conducted using Stata 17.

### Ethical approval

The study was approved by the Health Research Authority (Brighton and Sussex Research Ethics Committee; ethics reference: 20/HRA/4718). All participants gave informed consent.

### Involvement and engagement

We worked closely with a Professional Expert Panel of HCWs from a range of ethnic backgrounds and occupations as well as with national and local organisations (see study protocol) [7].

### Role of the funding source

The funders had no role in study design, data collection, data analysis, interpretation or writing of the report.

### Trial registration

The UK-REACH study is registered with ISRCTN. Reference ISRCTN 11811602.

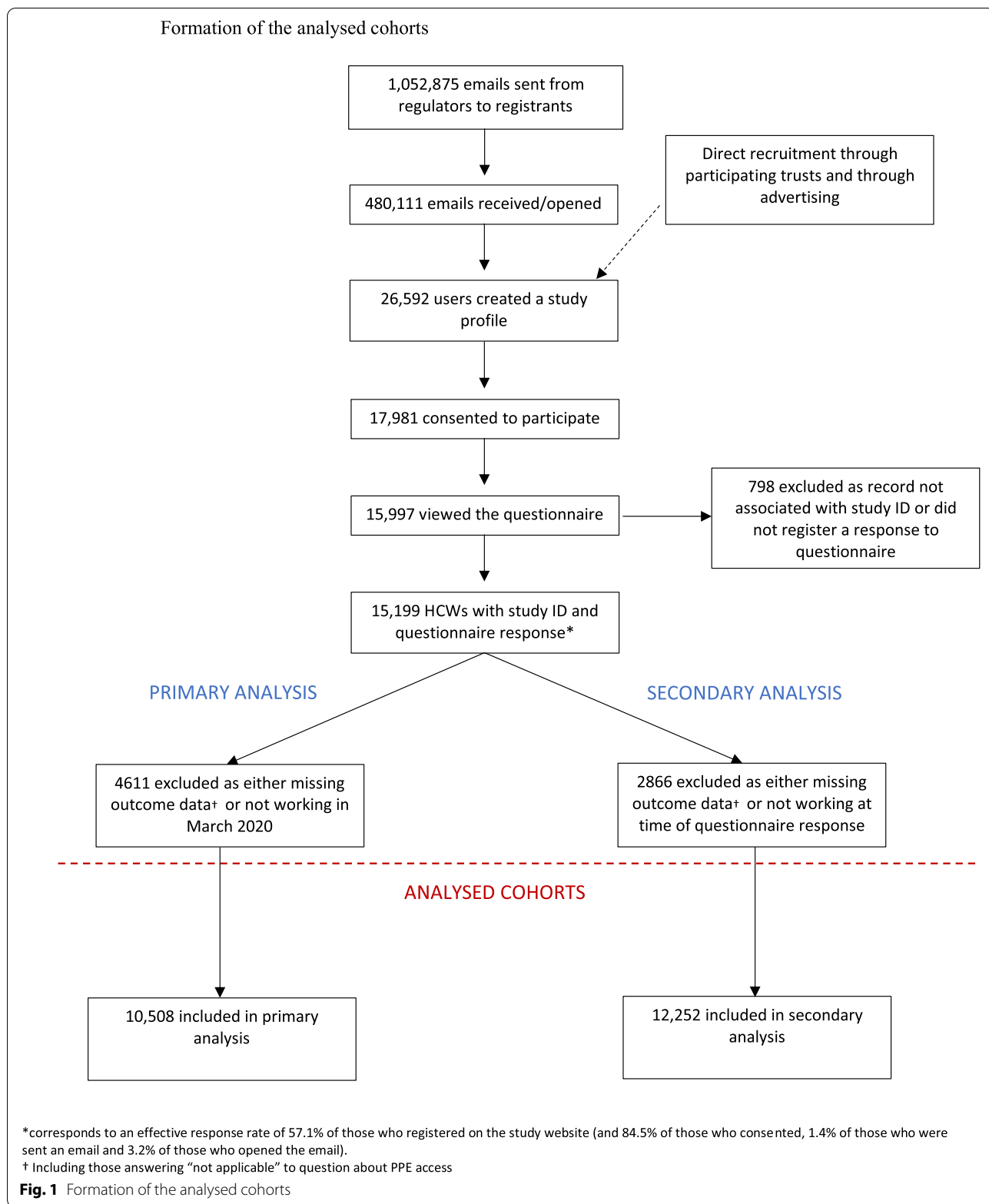
## Results

### Recruitment and formation of the cohort

Formation of the cohorts is shown in Fig. 1. Cohort recruitment has been described in a previous publication [8]. In brief, between 4<sup>th</sup> December 2020 and 8<sup>th</sup> March 2021, 1,052,875 emails were sent from regulators. 46% of the emails were received/opened; 26,592 users created a study profile and 17,981 consented to participate. 15,199 HCWs started the questionnaire; 10,508 HCWs were included in the primary analysis (PPE access during lockdown) and 12,252 in the secondary analysis (PPE access at the time of questionnaire response). A summary of missing data for each variable of interest is shown in Supplementary Table 3.

### Description of the analysed cohort

Table 1 shows the demographic and occupational characteristics of the 10,508 HCWs who were working during lockdown in the first wave. The median age was 45 (IQR 34 – 54); most respondents were female (74.7%). 30% of participants were from ethnic minority groups (19.9%



**Table 1** Description of cohort

Variable	Working during lockdown (primary analysis) N = 10,508	Working at the time of questionnaire response (secondary analysis) N = 12,252
<b>Age</b> , med(IQR)	45 (34 – 54)	44 (34 – 54)
<b>Sex</b>		
Male	2653 (25.3%)	2939 (24.1%)
Female	7829 (74.7%)	9281 (76.0%)
<b>Ethnicity</b>		
White	7066 (69.5%)	8261 (69.7%)
Asian	2026 (19.9%)	2327 (19.6%)
Black	444 (4.4%)	511 (4.3%)
Mixed	412 (4.1%)	491 (4.4%)
Other	218 (2.1%)	258 (2.2%)
<b>Migration status</b>		
Born in UK	7517 (72.9%)	8800 (73.2%)
Born abroad	2801 (27.2%)	3225 (26.8%)
<b>Occupation</b>		
Doctor or medical support	2632 (26.0%)	2788 (23.7%)
Nurse, NA or Midwife	2416 (23.9%)	2546 (21.6%)
Allied Health Professional <sup>a</sup>	4232 (41.9%)	5158 (43.8%)
Dental	382 (3.8%)	765 (6.5%)
Admin, estates or other	450 (4.5%)	525 (4.5%)
<b>Work sector</b>		
Non NHS	1093 (10.9%)	1849 (15.3%)
NHS	8981 (89.2%)	10,274 (84.8%)
<b>Work areas</b>		
Ambulance	427 (4.1%)	485 (4.0%)
Emergency Department	1052 (10.0%)	1046 (8.6%)
Intensive Care Unit	1014 (9.7%)	843 (6.9%)
Hospital Inpatient	2960 (28.3%)	3088 (25.3%)
Psychiatric hospital	325 (3.1%)	327 (2.7%)
Nursing or Care Home	255 (2.4%)	299 (2.5%)
<b>Aerosol generating procedure exposure</b>		
Less than weekly exposure	7777 (76.5%)	9259 (75.8%)
At least weekly exposure	2396 (23.6%)	2953 (24.2%)
<b>Night shift pattern</b>		
Never works nights	6990 (67.3%)	8629 (73.3%)
Works nights less than weekly	1948 (18.8%)	1966 (16.7%)
Works nights weekly or always	1445 (13.9%)	1179 (10.0%)
<b>Number of SARS-CoV-2 positive patients attended to per week (with physical contact)</b>		
None	5601 (53.9%)	8051 (66.7%)
1 – 5	2386 (23.0%)	2362 (19.5%)
6 – 20	1645 (15.8%)	1180 (9.8%)
≥ 21	765 (7.4%)	485 (4.0%)
<b>Work region</b>		
London	1344 (14.5%)	1575 (14.5%)
South East England	1219 (13.1%)	1433 (13.2%)
South West England	826 (8.9%)	975 (9.0%)
East of England	752 (8.1%)	919 (8.5%)
East Midlands	1022 (11.0%)	1176 (10.9%)

**Table 1** (continued)

Variable	Working during lockdown (primary analysis) N = 10,508	Working at the time of questionnaire response (secondary analysis) N = 12,252
West Midlands	804 (8.7%)	947 (8.7%)
North East England	440 (4.7%)	482 (4.5%)
North West England	1070 (11.5%)	1218 (11.2%)
Yorkshire and the Humber	753 (8.1%)	897 (8.3%)
Wales	318 (3.4%)	371 (3.4%)
Scotland	609 (6.5%)	694 (6.4%)
Northern Ireland	134 (1.4%)	151 (1.4%)
<b>Trust in employer (to address a concern about unsafe clinical practice)</b>		
Does not trust employer	3071 (30.7%)	3530 (29.5%)
Trusts employer	6945 (69.3%)	8439 (70.5%)

<sup>a</sup> Also includes pharmacists, healthcare scientists, ambulance workers and those in optical roles

Occupational factors other than region of workplace relate to work circumstances during the weeks following the first UK national lockdown on March 23<sup>rd</sup> 2020 in the primary analysis and at the time of questionnaire response in the secondary analysis

IQR Interquartile range, NHS National health service, PPE Personal protective equipment, SARS-CoV-2 Severe acute respiratory syndrome coronavirus-2

Asian, 4.4% Black, 4.1% Mixed, 2.1% Other). Description of the 12,252 HCWs working at the time of questionnaire response is also shown in Table 1.

#### Univariable analysis

Table 2 shows demographic and occupational characteristics of HCWs included in the primary analysis, stratified by PPE access and unadjusted odds ratios for the association of these characteristics with reported PPE access. Just over a third (35.2%) of HCWs working during lockdown reported access to appropriate PPE at all times. A significantly smaller proportion of those reporting access to PPE were from Asian ethnic groups than those not reporting access to PPE (16.3% vs 21.9%, OR 0.68, 95%CI 0.61 – 0.76 [reference White]. At the time of questionnaire response (secondary analysis) 83.9% of HCWs reported access to PPE at all times. A description of those included in the secondary analysis stratified by PPE access and unadjusted odds ratios are shown in Supplementary Table 4.

#### Multivariable analysis

##### Primary analysis: PPE access during lockdown

Table 3 shows adjusted odds ratios for PPE access during the first UK lockdown. On multivariable logistic regression analysis, younger HCWs, as well as those from Asian ethnic groups (compared to those of White ethnicity), allied health professionals and dentists (compared to those in medical roles) were all less likely to report access to PPE at all times during the first lockdown (Fig. 2a). Those who had regular physical contact with confirmed or suspected COVID-19 patients were less likely to

report access to appropriate PPE at all times compared to those who did not (aOR for PPE access in those who saw 21 or more COVID-19 patients a week compared to those who saw none: 0.74, 95% CI 0.61–0.90). HCWs working in London were less likely to report PPE access at all times compared to South West or North East England, and those who indicated trust in their employer to address concerns about unsafe clinical practice were twice as likely to report PPE access at all times, compared to those who reported the opposite (aOR 2.18, 95% CI 1.97–2.40).

##### Secondary analysis: PPE access at time of questionnaire response

Table 3 shows adjusted odds ratios for PPE access at the time of questionnaire response (secondary analysis). Commensurate with findings from the primary analysis, younger HCWs and those from Asian ethnic groups (compared to White groups) were less likely to have access to PPE at all times, with odds ratios similar to those reported in the primary analysis.

By contrast with the primary analysis, HCWs in allied health professional roles and those working in dental roles were more likely to report access to PPE at all times than those in medical roles. The effect of increasing exposure to COVID-19 patients on PPE access was more marked in the secondary analysis, with those attending to  $\geq 21$  COVID-19 patients per week being almost half as likely to report access to PPE at all times compared to those that did not attend to any of these patients (Fig. 2b).

Access to PPE at all times was more likely for those working in South-East England, East and West Midlands,

**Table 2** Description of those included in the primary analysis by access to personal protective equipment with unadjusted odds ratio

Variable	Excluding those not working during lockdown (primary analysis)			
	Had access to PPE 3702 (35.2%)	Did not have access to PPE 6806 (64.8%)	Unadjusted OR (95%CI) for access to PPE	P value
<b>Age</b> , med(IQR)	47 (38 – 55)	43 (33 – 53)	1.25 (1.21 – 1.30)	< 0.001
<b>Sex</b>				
Male	915 (24.8%)	1738 (25.6%)	Ref	-
Female	2782 (75.3%)	5047 (74.4%)	1.05 (0.95 – 1.19)	0.33
<b>Ethnicity</b>				
White	2649 (73.8%)	4417 (67.2%)	Ref	-
Asian	586 (16.3%)	1440 (21.9%)	0.68 (0.61 – 0.76)	< 0.001
Black	145 (4.0%)	299 (4.6%)	0.81 (0.66 – 0.99)	0.04
Mixed	141 (3.9%)	271 (4.1%)	0.88 (0.71 – 1.08)	0.23
Other	71 (2.0%)	147 (2.2%)	0.80 (0.60 – 1.07)	0.13
<b>Migration status</b>				
Born in UK	2756 (75.6%)	4761 (71.4%)	Ref	-
Born abroad	892 (24.5%)	1909 (68.2%)	0.81 (0.74 – 0.88)	< 0.001
<b>Occupation</b>				
Doctor or medical support	934 (26.2%)	1698 (25.9%)	Ref	-
Nurse, NA or Midwife	913 (25.6%)	1503 (23.0%)	1.12 (1.00 – 1.25)	0.05
Allied Health Professional <sup>a</sup>	1419 (39.8%)	2813 (43.0%)	0.93 (0.84 – 1.03)	0.15
Dental	118 (3.3%)	264 (4.0%)	0.83 (0.66 – 1.04)	0.11
Admin, estates or other	181 (5.1%)	269 (4.1%)	1.23 (1.00 – 1.51)	0.05
<b>Work sector</b>				
Non NHS	432 (12.3%)	661 (10.1%)	Ref	-
NHS	3108 (87.7%)	5873 (89.9%)	0.82 (0.72 – 0.93)	0.002
<b>Work areas</b>				
Ambulance	119 (3.2%)	308 (4.5%)	0.70 (0.56 – 0.87)	0.001
Emergency Department	311 (8.4%)	741 (10.9%)	0.75 (0.65 – 0.86)	< 0.001
Intensive Care Unit	406 (11.0%)	608 (9.0%)	1.25 (1.10 – 1.43)	0.001
Hospital Inpatient	980 (26.5%)	1980 (29.2%)	0.88 (0.80 – 0.96)	0.004
Psychiatric hospital	92 (2.5%)	233 (3.4%)	0.72 (0.56 – 0.92)	0.008
Nursing or Care Home	96 (2.6%)	159 (2.3%)	1.12 (0.86 – 1.44)	0.40
<b>Aerosol generating procedure exposure</b>				
Less than weekly exposure	2822 (76.5%)	5114 (75.4%)	Ref	-
At least weekly exposure	868 (23.5%)	1665 (24.6%)	0.94 (0.86 – 1.04)	0.23
<b>Night shift pattern</b>				
Never works nights	2520 (68.9%)	4470 (66.5%)	Ref	-
Works nights less than weekly	685 (18.7%)	1263 (18.8%)	0.96 (0.86 – 1.06)	0.42
Works nights weekly or always	455 (12.4%)	990 (14.7%)	0.82 (0.72 – 0.92)	0.001
<b>Hours worked per week</b> , med(IQR)	37 (30 – 40)	38 (30 – 40)	0.99 (0.99 – 1.00)	< 0.001
<b>Number of SARS-CoV-2 positive patients attended to per week (with physical contact)</b>				
None	2135 (58.3%)	3466 (51.5%)	Ref	-
1 – 5	788 (21.5%)	1598 (23.7%)	0.80 (0.72 – 0.88)	< 0.001
6 – 20	523 (14.3%)	1122 (16.7%)	0.75 (0.67 – 0.85)	< 0.001
≥ 21	219 (6.0%)	546 (8.1%)	0.65 (0.55 – 0.77)	< 0.001
<b>Work region</b>				
London	421 (12.7%)	923 (15.4%)	Ref	-
South East England	421 (12.7%)	798 (13.3%)	1.16 (0.98 – 1.38)	0.27
South West England	337 (10.2%)	489 (8.2%)	1.48 (1.24 – 1.78)	< 0.001
East of England	243 (7.4%)	509 (8.5%)	1.06 (0.88 – 1.28)	0.56

**Table 2** (continued)

Variable	Excluding those not working during lockdown (primary analysis)			
	Had access to PPE 3702 (35.2%)	Did not have access to PPE 6806 (64.8%)	Unadjusted OR (95%CI) for access to PPE	P value
East Midlands	376 (11.4%)	646 (10.8%)	1.25 (1.05 – 1.49)	0.10
West Midlands	285 (8.6%)	519 (8.7%)	1.19 (0.99 – 1.42)	0.02
North East England	183 (5.5%)	257 (4.3%)	1.52 (1.22 – 1.89)	0.02
North West England	359 (10.9%)	711 (11.9%)	1.10 (0.93 – 1.30)	0.49
Yorkshire and the Humber	282 (8.5%)	471 (7.9%)	1.32 (1.10 – 1.59)	0.10
Wales	112 (3.4%)	206 (3.4%)	1.20 (0.92 – 1.57)	0.37
Scotland	229 (6.9%)	380 (6.4%)	1.27 (1.04 – 1.55)	0.02
Northern Ireland	59 (1.8%)	75 (1.3%)	1.66 (1.16 – 2.38)	0.006
<b>Trust in employer (to address a concern about unsafe clinical practice)</b>				
Does not trust employer	689 (19.6%)	2382 (36.6%)	Ref	-
Trusts employer	2820 (80.4%)	4125 (63.4%)	2.27 (2.06 – 2.50)	< 0.001

<sup>a</sup> Also includes pharmacists, healthcare scientists, ambulance workers and those in optical roles

Occupational factors other than region of workplace relate to work circumstances during the weeks following the first UK national lockdown on March 23.<sup>rd</sup> 2020

IQR Interquartile range, NHS National health service, OR Odds ratio, PPE Personal protective equipment, SARS-CoV-2 Severe acute respiratory syndrome coronavirus-2

Yorkshire and the Humber and Scotland in addition to South-West and North-East England as compared to those working in London. Trust in employer to address concerns about unsafe clinical practise was a more pronounced independent predictor of PPE access at all times compared to the primary analysis (aOR 2.90, 95%CI 2.61 – 3.21).

### Sensitivity analyses

Changing the threshold of the outcome measure (to access to PPE most of the time or more frequently vs some of the time or less frequently—see Supplementary Table 1), did not significantly alter interpretation of the results of the primary analysis (i.e. the majority of significant predictors remain the same). However, differences can be found in the effect of COVID-19 patient exposure (attenuated in the sensitivity analysis compared to the main analysis). Additionally, AGP exposure and working in the NHS increased likelihood of PPE access and all other occupational groups were less likely to report access to PPE than medical staff (see Supplementary Table 5). Changing the threshold in the secondary analysis led to only 303 HCWs reporting a lack of access to PPE and thus we considered that the number of events was too low for a multivariable analysis. Repeating the primary analysis using complete cases only did not significantly alter the interpretation of the results (see Supplementary Table 6).

### Discussion

In this analysis of over 12,000 HCWs across the UK, we found that reported access to appropriate PPE was particularly limited during the first UK lockdown and improved over the course of pandemic. Younger HCWs, Asian ethnic groups (compared to White groups), HCWs who worked in London (compared to multiple regions outside of London), those caring for COVID-19 patients as well as those who reported lack of trust in their employer were less likely to report access to appropriate PPE. HCWs in allied health professional roles were less likely to report access to PPE compared to those in medical roles during lockdown – but this effect reversed by the end of the study period.

Access to appropriate PPE is crucial to preventing HCW infection. When effective PPE is properly donned, removed and discarded, it protects both the HCW who wears it and those with whom the HCW comes into contact. Early in the pandemic, a study in China of 420 doctors and nurses who were deployed to Wuhan for 6 – 8 weeks to care for patients with COVID-19 demonstrated no HCW infection, by both PCR on nasopharyngeal swab and antibody on days 1, 7 and 14 after they had returned; all were fully trained and had access to PPE at all times [3]. Furthermore, a lack of access to PPE for HCWs caring for those with other high-consequence infectious diseases has been shown to be a significant source of physical and mental stress on HCWs as well as their close contacts [14–16]. and fear of becoming infected with SARS-CoV-2 and transmitting infection



**Table 3** Multivariable analysis of factors associated with PPE access at the start of the first UK national lockdown and at the time of answering the questionnaire

Variable	Access to PPE during first national lockdown (n = 10,508)		Access to PPE at the time of response (n = 12,252)	
	aOR (95% CI)	p value	aOR (95% CI)	p value
<b>Age<sup>a</sup></b>	1.21 (1.16 – 1.26)	<0.001	1.18 (1.13 – 1.24)	<0.001
<b>Sex</b>				
Male	Ref	-	Ref	-
Female	1.05 (0.94 – 1.17)	0.37	1.10 (0.97 – 1.25)	0.14
<b>Ethnicity</b>				
White	Ref	-	Ref	-
Asian	0.77 (0.67 – 0.89)	<0.001	0.79 (0.68 – 0.92)	0.002
Black	0.91 (0.73 – 1.14)	0.41	0.83 (0.65 – 1.06)	0.66
Mixed	0.96 (0.77 – 1.19)	0.69	0.91 (0.70 – 1.17)	0.17
Other	0.86 (0.63 – 1.18)	0.36	0.74 (0.54 – 1.01)	0.27
<b>Migration status</b>				
Born in UK	Ref	-	Ref	-
Born abroad	0.92 (0.82 – 1.04)	0.18	0.71 (0.62 – 0.81)	<0.001
<b>Occupation</b>				
Doctor or medical support	Ref	-	Ref	-
Nurse, nursing associate or Midwife	0.89 (0.77 – 1.02)	0.08	1.10 (0.93 – 1.31)	0.26
Allied health professional <sup>†</sup>	0.77 (0.68 – 0.87)	<0.001	1.27 (1.09 – 1.49)	0.002
Dental	0.63 (0.49 – 0.81)	<0.001	2.20 (1.57 – 3.08)	<0.001
Admin, estates or other	0.94 (0.75 – 1.17)	0.56	1.03 (0.77 – 1.38)	0.86
<b>Work sector</b>				
Non NHS	Ref	-	Ref	-
NHS	0.90 (0.78 – 1.03)	0.13	1.04 (0.87 – 1.23)	0.69
<b>Work areas</b>				
Ambulance	0.96 (0.75 – 1.24)	0.77	0.92 (0.70 – 1.21)	0.56
Emergency Department	0.88 (0.76 – 1.03)	0.12	0.84 (0.71 – 1.00)	0.05
Intensive Care Unit	1.61 (1.38 – 1.89)	<0.001	1.39 (1.12 – 1.71)	0.002
Hospital Inpatient	0.99 (0.90 – 1.10)	0.90	0.81 (0.71 – 0.91)	0.001
Psychiatric hospital	0.74 (0.57 – 0.95)	0.02	0.77 (0.58 – 1.03)	0.08
Nursing or Care Home	1.09 (0.97 – 1.23)	0.53	1.07 (0.74 – 1.53)	1.07
<b>Aerosol generating procedure exposure</b>				
Less than weekly exposure	Ref	-	Ref	-
At least weekly exposure	1.09 (0.97 – 1.23)	0.14	1.14 (0.99 – 1.31)	0.07
<b>Night shift pattern</b>				
Never works nights	Ref	-	Ref	-
Works nights less than weekly	1.19 (1.05 – 1.35)	0.006	0.88 (0.76 – 1.03)	0.10
Works nights weekly or always	1.06 (0.91 – 1.23)	0.42	0.81 (0.67 – 0.97)	0.02
<b>Hours worked per week</b>	0.99 (0.99 – 1.00)	0.005	1.00 (1.00 – 1.01)	0.56
<b>Number of SARS-CoV-2 positive patients attended to per week (with physical contact)</b>				
None	Ref	-	Ref	-
1 – 5	0.81 (0.73 – 0.91)	<0.001	0.76 (0.66 – 0.87)	<0.001
6 – 20	0.82 (0.72 – 0.95)	0.009	0.69 (0.58 – 0.82)	<0.001
≥ 21	0.74 (0.61 – 0.90)	0.003	0.52 (0.41 – 0.66)	<0.001
<b>Region of workplace</b>				
London	Ref	-	Ref	-
South East England	1.06 (0.89 – 1.27)	0.51	1.27 (1.04 – 1.55)	0.02
South West England or Channel Islands	1.31 (1.09 – 1.59)	0.005	1.38 (1.10 – 1.74)	0.006

**Table 3** (continued)

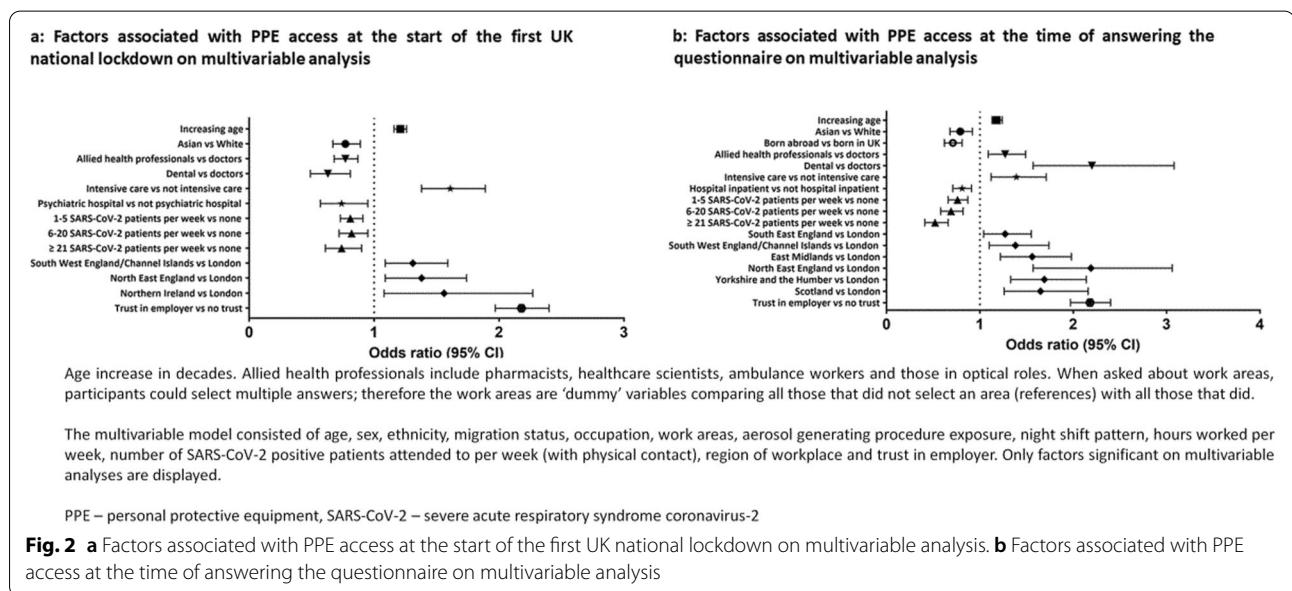
Variable	Access to PPE during first national lockdown (n = 10,508)		Access to PPE at the time of response (n = 12,252)	
	aOR (95% CI)	p value	aOR (95% CI)	p value
East of England	1.00 (0.82 – 1.21)	0.98	1.07 (0.86 – 1.32)	0.55
East Midlands	1.15 (0.96 – 1.38)	0.12	1.56 (1.22 – 1.98)	<0.001
West Midlands	1.17 (0.97 – 1.41)	0.10	1.20 (0.97 – 1.50)	0.10
North East England	1.38 (1.09 – 1.74)	0.006	2.19 (1.57 – 3.06)	<0.001
North West England or Isle of Man	1.04 (0.87 – 1.25)	0.63	1.19 (0.98 – 1.45)	0.09
Yorkshire and the Humber	1.19 (0.98 – 1.45)	0.07	1.69 (1.33 – 2.14)	<0.001
Wales	1.16 (0.88 – 1.53)	0.29	1.30 (0.94 – 1.80)	0.11
Scotland	1.21 (0.98 – 1.49)	0.08	1.65 (1.26 – 2.16)	<0.001
Northern Ireland	1.56 (1.08 – 2.27)	0.02	1.54 (0.92 – 2.59)	0.10
<b>Trust in employer</b> (to deal with a concern about unsafe clinical practice)				
Does not trust employer	Ref	-	Ref	-
Trusts employer	2.18 (1.97 – 2.40)	<0.001	2.90 (2.61 – 3.21)	<0.001

<sup>a</sup> For each decade increase in age. <sup>†</sup> Also includes pharmacists, healthcare scientists, ambulance workers and those in optical roles

Analyses adjusted for all other variables in the table

When asked about work areas participants could select multiple answers, therefore the work areas variables are 'dummy' variables comparing all those that did not select an area (reference) with all those that did

aOR Adjusted odds ratio, NHS National health service, PPE Personal protective equipment, Ref Reference category for categorical variables, SARS-CoV-2 Severe acute respiratory syndrome coronavirus-2



to their contacts has been shown to adversely affect the mental health of HCWs [17].

Our study provides the first large quantitative summary of reported PPE access amongst UK HCWs during the COVID-19 pandemic in the literature. We found that only 35% of HCWs in the UK reported having access to adequate PPE at all times during the period of the first

lockdown, when at its worst, over 1,000 COVID-19 patients were admitted to hospital a day [18]. Clearly, this finding has implications for HCW infection and SARS-CoV-2 transmission. Our findings are in accordance with a smaller Latin American study which found 70% of HCWs reported a lack of access to PPE and with qualitative studies that investigated HCWs experiences

with PPE during the first wave in the UK [19]. In the UK studies, HCWs report a major PPE shortage, which in itself was a significant source of anxiety and distress, having a tangible impact on the workforce, resorting to reuse and improvisation of PPE to continue caring for patients when necessary [20, 21]. Concern for inadequate PPE stocks may also explain why a higher proportion of allied health professionals and dentists reported lack of PPE access only during the first wave, where they may have been reserved for those looking after hospitalised COVID-19 patients.

We found that the groups which reported limited PPE access were also those that in other studies have been shown to be at highest risk of infection. Indeed, the number of COVID-19 patients seen was an independent negative predictor of PPE access. In a previous study, we found that junior members of staff were more likely to be seropositive for antibodies against SARS-CoV-2 in one UK hospital trust [22]. Junior members of staff are usually younger, and more likely to have more frequent patient contact and fewer administrative and managerial responsibilities, factors that may draw their more senior colleagues away from direct patient care. Furthermore, much of the outpatient work (often undertaken by more senior clinicians) was adapted to include more remote telephone or video consultations during the height of the pandemic, to reduce exposure and therefore the need for PPE. Similarly, HCWs who worked in London hospitals were more likely to have seen a higher number of COVID-19 cases compared to those working in other parts of the country [23]. The more often a HCW sees a patient with COVID-19, the more times one would have had to 'don' and 'doff' PPE, perpetuating their lack of access if resources during this time were limited. Taken together, these findings add weight to the possibility that lack of PPE access was directly associated with COVID-19 patient contact – which may in part explain the reportedly high number of HCW-associated infections in the UK. It should also be noted that although severe acute COVID-19 might be an unlikely result of SARS-CoV-2 infection amongst younger HCWs, this group may suffer debilitating, prolonged symptoms as a result of 'long COVID'. Therefore, there may be severe implications both for the individual HCW and the healthcare workforce as a whole (due to absences from work necessitated by the illness).

Of concern, we observed that those from Asian ethnic groups, as well as those who report lack of trust in their employers were less likely to report adequate PPE access compared to White groups or those who reported trust in their employers respectively. Our findings relating to ethnicity align with a smaller UK survey study which found

HCW from ethnic minority groups were more likely to report a lack of access to PPE than their White colleagues [24]. Should lack of PPE access be directly related to risk of infection, it may partially explain why HCWs from ethnic minority groups are disproportionately affected by COVID-19 [25–28]. Our findings suggest that disparities continue to exist within UK healthcare organisations, the reasons which may be complex [27]. Within the context of HCWs, this could be due to inequities in accessing the right equipment for the tasks required – which in turn can only lead to a further downward spiral of mistrust. It is important that healthcare organisations recognise that such disparities continue to exist and open dialogues with their staff, so that barriers to accessing adequate PPE can be identified and addressed. Furthermore, in light of these findings, it is even more vital that detailed occupational risk assessments that take account of ethnicity are undertaken for UK HCWs [29].

Our study has limitations. As with any consented observational study, there is potential for self-selection bias. We may be reporting only HCWs' perspectives regarding what is 'adequate' PPE rather than lack of access, since significant variation across a range of different clinical procedures exists for PPE between the UK, other countries and the World Health Organisation [30]. However, the large difference in the proportion of HCWs reporting access to PPE in the primary and secondary analyses provides evidence against this, given that UK PPE guidelines did not change in the intervening time. Our findings relating to trust in employer might indicate reporting bias (i.e. those that did not trust their employer to deal with a concern about unsafe clinical practice might be more likely to report a lack of PPE access in their workplace than those that did). Additionally, given the cross sectional nature of the analyses we cannot determine the direction of causality in this association. Finally, we are asking HCWs to recall their experiences of the last year and thus responses may be prone to recall bias. However, UK-REACH is one of the largest and most comprehensive HCW databases in the world to date, and if only a third of 12,000 HCWs report adequate PPE access, this is difficult for policymakers to ignore. Furthermore, risk factors for lack of PPE access were still present in the secondary analysis, which is less prone to recall bias.

## Conclusions

In summary, we have demonstrated that significant proportions of HCWs in the UK reported a lack of access to appropriate PPE over the course of the COVID-19 pandemic and that PPE access was particularly limited during the first national lockdown compared to later in the

pandemic. We have also determined key predictors of PPE access. Importantly we show that the demographic and occupational groups who were less likely to report access to PPE overlap with those facing a disproportionate risk of infection. Our study provides evidence of the extraordinary occupational hazard faced by UK frontline HCWs over the course of the pandemic, which has major implications for their physical and mental health as well as that of their friends and families. Healthcare organisations should urgently implement strategies to understand and address loss of trust from their employees and combat institutional and structural discrimination.

### Abbreviations

aOR: Adjusted odds ratio; AGPs: Aerosol generating procedures; aPPE: Access to appropriate PPE; CHERRIES: Checklist for Reporting Results of Internet E-Surveys; COVID-19: Coronavirus diseases 2019; HCW: Healthcare worker; IQR: Interquartile range; NHS: National Health Service; OR: Odds ratio; PPE: Personal protective equipment; SARS-CoV-2: Severe acute respiratory syndrome coronavirus-2; UK: United Kingdom; UK-REACH: The United Kingdom Research study into Ethnicity And COVID-19 Outcomes in Healthcare workers.

### Supplementary Information

The online version contains supplementary material available at <https://doi.org/10.1186/s12913-022-08202-z>.

**Additional file 1: Supplementary Table 1.** Derivation of binary outcome variables. **Supplementary Table 2.** Derivation of covariates from questionnaire data. **Supplementary Table 3.** Summary of missing data for primary and secondary analyses. **Supplementary Table 4.** Description of those included in the secondary analysis by access to personal protective equipment. **Supplementary Table 5.** Multivariable analysis of factors associated with PPE access during the first UK national lockdown with altered outcome threshold (sensitivity analysis). **Supplementary Table 6.** Multivariable analysis of factors associated with PPE access during the first UK national lockdown and at the time of questionnaire response including only complete cases (sensitivity analysis).

### Acknowledgements

We would like to thank all the healthcare workers who took part in this study when the NHS was under immense pressure. We wish to acknowledge the members of the UK-REACH Professional Expert Panel (Amir Burney, Association of Pakistani Physicians of Northern Europe; Tiffanie Harrison; London North West University Healthcare NHS Trust; Ahmed Hashim, Sudanese Doctors Association; Sandra Kazembe, University Hospitals Leicester NHS Trust; Susie M. Lagrata (Co-chair), Filipino Nurses Association-UK & University College London Hospitals NHS Foundation Trust; Sathheesh Mathew, British Association of Physicians of Indian Origin; Juliette Mutuyimana, Kingston Hospitals NHS Trust; Padmasayee Papineni (Co-chair), London North West University Healthcare NHS Trust), and the Steering and Advisory Group, and SERCO, as well as the following people for their support in setting up the study from the regulatory bodies: Kerrin Clapton and Andrew Ledgard (General Medical Council), Caroline Kenny (Nursing and Midwifery Council), David Teeman and Lisa Bainbridge (General Dental Council), My Phan and John Tse (General Pharmaceutical Council), Angharad Jones and Marcus Dye (General Optical Council), Charlotte Rogers (The Health and Care Professions Council) and Mark Neale (Pharmaceutical Society of Northern Ireland).

We would also like to acknowledge the following trusts and sites who recruited participants to the study: Nottinghamshire Healthcare NHS Foundation Trust, University Hospitals Leicester, Lancashire Teaching Hospitals NHS Foundation Trust, Northumbria Healthcare, Berkshire Healthcare, Derbyshire Healthcare NHS Foundation Trust, South Tees NHS Foundation Trust, Birmingham and Solihull NHS Foundation Trust, Affinity Care, Royal Brompton and

Harefield, Sheffield Teaching Hospitals, St George's Hospital, Yeovil District Hospital, Lewisham and Greenwich NHS Trust, Black Country Community Healthcare NHS Foundation Trust, Sussex Community NHS Foundation Trust, South Central Ambulance Service, University Hospitals Coventry and Warwickshire, University Hospitals Southampton NHS Foundation Trust, London Ambulance Trust, Royal Free, Birmingham Community Healthcare NHS Foundation Trust, Central London Community Healthcare, Chesterfield Royal Hospital, Bridgewater Community Healthcare, Northern Borders, County Durham and Darlington Foundation Trust, Walsall Healthcare NHS Trust.

### Authors' contributions

MP conceived of the idea and led the application for funding with input from MT, KK, KW, LN, SC, LG, ALG and CJ. The questionnaire was designed by KW, MP, ICM, CMeI, CJ, ALG, LN, AG1 and CAM. Online consent and questionnaire tools were developed by LB. CAM, DP and JN wrote the first draft of the manuscript with input from MP, AA, LB, SC, LJG, BG, AG1, ALG, AG2, TH, CJ, ICM, LBN, RR, SS, MDT, KW, SZ and KK contributed to and approved the submitted manuscript.

### Funding

UK-REACH is supported by a grant from the MRC-UK Research and Innovation (MR/V027549/1) and the Department of Health and Social Care through the National Institute for Health Research (NIHR) rapid response panel to tackle COVID-19. Core funding was also provided by NIHR Biomedical Research Centres. CAM is an NIHR Academic Clinical Fellow (ACF-2018-11-004). KW is funded through an NIHR Career Development Fellowship (CDF-2017-10-008). LBN is supported by an Academy of Medical Sciences Springboard Award (SBF005/1047). ALG was funded by internal fellowships at the University of Leicester from the Wellcome Trust Institutional Strategic Support Fund (204801/Z/16/Z) and the BHF Accelerator Award (AA/18/3/34220). MDT holds a Wellcome Trust Investigator Award (WT 202849/Z/16/Z) and an NIHR Senior Investigator Award. KK is supported by the National Institute for Health Research (NIHR) Applied Research Collaboration East Midlands (ARC EM). KK and MP are supported by the NIHR Leicester Biomedical Research Centre (BRC). MP is supported by a NIHR Development and Skills Enhancement Award. This work is carried out with the support of BREATHE -The Health Data Research Hub for Respiratory Health [MC\_PC\_19004] in partnership with SAIL Databank. BREATHE is funded through the UK Research and Innovation Industrial Strategy Challenge Fund and delivered through Health Data Research UK.

### Availability of data and materials

To access data or samples produced by the UK-REACH study, the working group representative must first submit a request to the Core Management Group by contacting the UK-REACH Project Manager in the first instance. For ancillary studies outside of the core deliverables, the Steering Committee will make final decisions once they have been approved by the Core Management Group. Decisions on granting the access to data/materials will be made within eight weeks.

Third party requests from outside the Project will require explicit approval of the Steering Committee once approved by the Core Management Group. Note that should there be significant numbers of requests to access data and/or samples then a separate Data Access Committee will be convened to appraise requests in the first instance.

### Declarations

#### Ethics approval and consent to participate

No additional ethical approval, beyond approvals that are in place for the UK-REACH study (see [methods](#)), were required for this analysis. No administrative approvals were required to access the datasets used in this study.

#### Consent for publication

Not applicable.

#### Competing interests

KK is Director of the University of Leicester Centre for Black Minority Ethnic Health, Trustee of the South Asian Health Foundation, Chair of the Ethnicity Subgroup of the UK Government Scientific Advisory Group for Emergencies (SAGE) and Member of Independent SAGE. SC is Deputy Medical Director of the General Medical Council, UK Honorary Professor, University of Leicester. MP

reports grants from Sanofi, grants and personal fees from Gilead Sciences and personal fees from QIAGEN, outside the submitted work.

#### Author details

<sup>1</sup>Department of Respiratory Sciences, University of Leicester, Leicester, UK. <sup>2</sup>Department of Infection and HIV Medicine, University Hospitals of Leicester NHS Trust, Leicester, UK. <sup>3</sup>Respiratory Department, Northumbria Specialist Emergency Care Hospital, Cramlington, UK. <sup>4</sup>University Hospitals Leicester NHS Trust, Leicester Royal Infirmary, Leicester, UK. <sup>5</sup>General Medical Council, London, UK. <sup>6</sup>Department of Health Sciences, University of Leicester, Leicester, UK. <sup>7</sup>Lancashire Clinical Research Facility, Royal Preston Hospital, Fulwood, UK. <sup>8</sup>Oxford University Hospitals NHS Foundation Trust, Oxford, UK. <sup>9</sup>Hull University Teaching Hospitals NHS Trust, Hull, UK. <sup>10</sup>University College London Medical School, London, UK. <sup>11</sup>Population and Lifespan Sciences, School of Medicine, University of Nottingham, Nottingham, UK. <sup>12</sup>Centre for Research & Development, Derbyshire Healthcare NHS Foundation Trust, Derby, UK. <sup>13</sup>Nottinghamshire Healthcare NHS Foundation Trust, Nottingham, UK. <sup>14</sup>Research and Development Department, Berkshire Healthcare NHS Foundation Trust, Bracknell, UK. <sup>15</sup>Diabetes Research Centre, University of Leicester, Leicester, UK.

Received: 18 November 2021 Accepted: 15 June 2022

Published online: 05 July 2022

#### References

- Center for Systems Science and Engineering at Johns Hopkins University. COVID-19 Dashboard. 2021. <https://coronavirus.jhu.edu/map.html>. Accessed 16 Aug 2021.
- Nguyen LH, Drew DA, Graham MS, et al. Risk of COVID-19 among frontline health-care workers and the general community: a prospective cohort study. *Lancet Public Health*. 2020;5(9):e475–83. [https://doi.org/10.1016/s2468-2667\(20\)30164-x](https://doi.org/10.1016/s2468-2667(20)30164-x).
- Liu M, Cheng SZ, Xu KW, et al. Use of personal protective equipment against coronavirus disease 2019 by healthcare professionals in Wuhan, China: Cross sectional study. *BMJ*. 2020;369:6–11. <https://doi.org/10.1136/bmj.m2195>.
- Evans S, Agnew E, Wynnycky E, et al. The impact of testing and infection prevention and control strategies on within-hospital transmission dynamics of COVID-19 in English hospitals. *Philos Trans R Soc B Biol Sci*. 2021;376(1829):20200268. <https://doi.org/10.1098/rstb.2020.0268>.
- Amnesty International UK. UK among highest COVID-19 health worker deaths in the world. 2020. <https://www.amnesty.org.uk/press-releases/uk-among-highest-covid-19-health-worker-deaths-world>. Accessed 16 Aug 2021.
- Cooper K. Most doctors still lack protective equipment, finds survey. 2020. <https://www.bma.org.uk/news-and-opinion/most-doctors-still-lack-protective-equipment-finds-survey>. Accessed 8 Sep 2021.
- Teece L, Gray LJ, Melbourne C, et al. United Kingdom Research study into Ethnicity and COVID-19 outcomes in Healthcare workers (UK-REACH): a retrospective cohort study using linked routinely collected data, study protocol. *BMJ Open*. 2021;11(9):e050647. <https://doi.org/10.1136/bmjopen-2020-046392>.
- Woolf K, McManus IC, Martin CA, et al. Ethnic differences in SARS-CoV-2 vaccine hesitancy in United Kingdom healthcare workers: Results from the UK-REACH prospective nationwide cohort study. *Lancet Reg Heal - Eur*. 2021;000:100180. <https://doi.org/10.1016/j.lanep.2021.100180>.
- Equator Network. Improving the quality of Web surveys: the Checklist for Reporting Results of Internet E-Surveys (CHERRIES) 2013. 2021. <https://www.equator-network.org/reporting-guidelines/improving-the-quality-of-web-surveys-the-checklist-for-reporting-results-of-internet-e-surveys-cherries/>. Accessed 21 Jun 2021.
- Eysenbach G. Improving the quality of web surveys: The Checklist for Reporting Results of Internet E-Surveys (CHERRIES). *J Med Internet Res*. 2004;6:1–6. <https://doi.org/10.2196/jmir.6.3.e34>.
- Office for National Statistics United Kingdom Government. Ethnic group, national identity and religion. 2021. <https://www.ons.gov.uk/methodology/classificationsandstandards/measuringequality/ethnicgroupnationalidentityandreligion>.
- NHS care quality commission. National NHS Staff Survey 2020. 2020. [https://www.nhsstaffsurveys.com/static/a23cecca5b39abd82ad03bcdf0167e5b/P101197\\_ST20\\_Core-questionnaire\\_FINAL\\_03082020.pdf](https://www.nhsstaffsurveys.com/static/a23cecca5b39abd82ad03bcdf0167e5b/P101197_ST20_Core-questionnaire_FINAL_03082020.pdf). Accessed 27 June 2022.
- Mertens BJA, Banzato E, de Wreede LC. Construction and assessment of prediction rules for binary outcome in the presence of missing predictor data using multiple imputation and cross-validation: Methodological approach and data-based evaluation. *Biometrical J*. 2020;62:724–41. <https://doi.org/10.1002/bimj.201800289>.
- Delamou A, Beavogui AH, Kondé MK, et al. Ebola: Better protection needed for Guinean health-care workers. *Lancet*. 2015;385:503–4. [https://doi.org/10.1016/S0140-6736\(15\)60193-3](https://doi.org/10.1016/S0140-6736(15)60193-3).
- Pathmanathan I, O'Connor KA, Adams ML, et al. Rapid assessment of Ebola infection prevention and control needs—six districts, Sierra Leone, October 2014. *MMWR Morb Mortal Wkly Rep* 2014;63:1172–4. *Lancet* T. Ebola: Protection of health-care workers. *Lancet*. 2014;384:2174. [https://doi.org/10.1016/S0140-6736\(14\)62413-2](https://doi.org/10.1016/S0140-6736(14)62413-2).
- Mira JJ, Cobos-Vargas Á, Astier-Peña MP, et al. Addressing acute stress among professionals caring for COVID-19 patients: lessons learned during the first outbreak in Spain (March–April 2020). *Int J Environ Res Public Health*. 2021;18(22):12010. <https://doi.org/10.3390/ijerph182212010>.
- UK Government. Healthcare in the UK - Coronavirus in the UK. 2021. <https://coronavirus.data.gov.uk/details/healthcare>. Accessed 16 Aug 2021.
- Martin-Delgado J, Viteri E, Mula A, et al. Availability of personal protective equipment and diagnostic and treatment facilities for healthcare workers involved in COVID-19 care: A cross-sectional study in Brazil, Colombia, and Ecuador. *PLoS ONE*. 2020;15:1–13. <https://doi.org/10.1371/journal.pone.0242185>.
- Hoerke K, Djellouli N, Andrews L, et al. Frontline healthcare workers' experiences with personal protective equipment during the COVID-19 pandemic in the UK: a rapid qualitative appraisal. *BMJ Open*. 2021;11(1):e046199. <https://doi.org/10.1136/bmjopen-2020-046199>.
- Vindrola-Padros C, Andrews L, Dowrick A, et al. Perceptions and experiences of healthcare workers during the COVID-19 pandemic in the UK. *BMJ Open*. 2020;10:1–8. <https://doi.org/10.1136/bmjopen-2020-040503>.
- Martin CA, Patel P, Goss C, et al. Demographic and occupational determinants of anti-SARS-CoV-2 IgG seropositivity in hospital staff. *J Public Health* 2020. <https://doi.org/10.1093/pubmed/fdaa199>.
- Treibel TA, Manisty C, Burton M, et al. COVID-19: PCR screening of asymptomatic health-care workers at London hospital. *Lancet*. 2020;395:1608–10. [https://doi.org/10.1016/S0140-6736\(20\)31100-4](https://doi.org/10.1016/S0140-6736(20)31100-4).
- Robbins T, Kyrou I, Vankad M, et al. Differential perceptions regarding personal protective equipment use during the COVID-19 pandemic by NHS healthcare professionals based on ethnicity, sex and professional experience. *Infect Prev Pract*. 2021;3(3):100141. <https://doi.org/10.1016/j.infpip.2021.100141>.
- Pareek M, Bangash M, Pareek N, et al. Ethnicity and COVID-19: an urgent public health research priority. *Lancet*. 2020;395(10234):1421–2.
- Pan D, Martin C, Nazareth J, et al. Ethnic disparities in COVID-19: increased risk of infection or severe disease? *Lancet*. 2021;398(10298):389–90 (Accepted).
- Pan D, Sze S, Minhas JS, et al. The impact of ethnicity on clinical outcomes in COVID-19: a systematic review. *EclinicalMedicine*. 2020;23:100404. <https://doi.org/10.1016/j.eclinm.2020.100404>.
- Martin CA, Jenkins DR, Minhas JS, et al. Socio-demographic heterogeneity in the prevalence of COVID-19 during lockdown is associated with ethnicity and household size: Results from an observational cohort study. *EclinicalMedicine*. 2020;25: 100466. <https://doi.org/10.1016/j.eclinm.2020.100466>.
- Khunti K, Griffiths A, Majeed A, et al. Assessing risk for healthcare workers during the covid-19 pandemic. *BMJ*. 2021;372:1–4. <https://doi.org/10.1136/bmj.n602>.
- Mudalige NL, Sze S, Oyefeso O, et al. To PPE or not to PPE? Making sense of conflicting international recommendations for PPE during chest compressions in patients with COVID-19. *Resuscitation*. 2020;156:146–8. <https://doi.org/10.1016/j.resuscitation.2020.09.019>.

#### Publisher's Note

Springer Nature remains neutral with regard to jurisdictional claims in published maps and institutional affiliations.