

RESEARCH

Open Access



Development and validation of a predictive model of abnormal uterine bleeding associated with ovulatory dysfunction: a case-control study

Yue Zhang^{1,2}, Zhou Luo^{1,2}, Yingxian Jia³, Yunxiu Zhao^{1,2}, Yizhou Huang^{1,2}, Fei Ruan^{1,2}, Qian Ying⁴, Linjuan Ma^{1,2}, Jie Luo^{1,2*} and Jianhong Zhou^{1,2*}

Abstract

Background Abnormal uterine bleeding associated with ovulatory dysfunction (AUB-O) is a typical gynecological disease that can affect women of various ages. Being able to identify women at risk of AUB-O could allow physicians to take timely action. This study aimed to identify the influencing factors of AUB-O in Chinese women, and then develop and validate a predictive model.

Methods In this multicenter case-control study, 391 women with AUB-O and 838 controls who came from nine hospitals in Zhejiang province were recruited between April 2019 and January 2022. All the participants completed a structured questionnaire including general characteristics, lifestyle and habits, menstrual and reproductive history, and previous diseases. The predictive model was developed on a group of 822 women and validated on a group of 407 women. Logistic regression was adopted to investigate the influencing factors and develop the model, and validation was then performed.

Results The independent predictive factors of AUB-O were age (OR 1.073, 95% CI 1.046—1.102, $P < 0.001$), body mass index (OR 1.081, 95% CI 1.016—1.151, $P = 0.015$), systolic blood pressure (OR 1.016, 95% CI 1.002—1.029, $P = 0.023$), residence (OR 2.451, 95% CI 1.727—3.478, $P < 0.001$), plant-based diet (OR 2.306, 95% CI 1.415—3.759, $P < 0.001$), fruits eating (OR 1.887, 95% CI 1.282—2.776, $P = 0.001$), daily sleep duration (OR 0.819; 95% CI 0.708—0.946, $P = 0.007$), multiparous (parity = 1, OR 0.424, 95% CI 0.239—0.752, $P = 0.003$; parity > 1, OR 0.450, 95% CI 0.247—0.822, $P = 0.009$), and history of ovarian cyst (OR 1.880, 95% CI 1.305—2.710, $P < 0.001$). The predictive ability (area under the curve) in the development group was 0.77 (95% CI 0.74—0.81), while in the validation group it was 0.73 (95% CI 0.67—0.79). The calibration curve was in high coincidence with the standard curve in the development group, and similar to the validation group. A tool for AUB-O risk calculation was created.

Conclusions Nine influencing factors and a predictive model were proposed in this study, which could identify women who are at high risk of developing AUB-O. This finding highlights the importance of early screening and the lifelong management of ovulatory disorders for women.

Keywords Abnormal uterine bleeding associated with ovulatory dysfunction, Heavy menstrual bleeding, Influencing factors, Predictive model

*Correspondence:

Jie Luo
sunnyluo@zju.edu.cn
Jianhong Zhou
zhoujh1117@zju.edu.cn

Full list of author information is available at the end of the article



© The Author(s) 2023. **Open Access** This article is licensed under a Creative Commons Attribution 4.0 International License, which permits use, sharing, adaptation, distribution and reproduction in any medium or format, as long as you give appropriate credit to the original author(s) and the source, provide a link to the Creative Commons licence, and indicate if changes were made. The images or other third party material in this article are included in the article's Creative Commons licence, unless indicated otherwise in a credit line to the material. If material is not included in the article's Creative Commons licence and your intended use is not permitted by statutory regulation or exceeds the permitted use, you will need to obtain permission directly from the copyright holder. To view a copy of this licence, visit <http://creativecommons.org/licenses/by/4.0/>. The Creative Commons Public Domain Dedication waiver (<http://creativecommons.org/publicdomain/zero/1.0/>) applies to the data made available in this article, unless otherwise stated in a credit line to the data.

Introduction

Abnormal uterine bleeding (AUB) is a widespread gynecological disease among women all over the world. The prevalence of AUB among women of reproductive age ranges from 20 to 35%, and it is considerably higher in adolescents and perimenopausal women, affecting their life quality and work efficiency to various degrees [1, 2]. Among the classification of causes of AUB (PALM-COEIN, which includes polyp, adenomyosis, leiomyoma, malignancy and hyperplasia, coagulopathy, ovulatory dysfunction, endometrial, iatrogenic, and not yet classified) [3], abnormal uterine bleeding associated with ovulatory dysfunction (AUB-O) is the most common, with a prevalence of approximately 50% in Chinese women [4]. AUB-O is typically characterized by unpredictable timing of menstruation and variable volume, which can sometimes cause heavy menstrual bleeding (HMB) or amenorrhea [5].

Ovulatory dysfunction can result from both physiological and pathological conditions that affect any section of the hypothalamic-pituitary-ovarian axis such as polycystic ovary syndrome (PCOS), premature ovarian failure (POI) and hyperprolactinemia [6]. Most ovulatory disorders are accompanied by AUB symptoms, ranging from occasionally changeable cycle and period to anovulatory [7]. A detailed medical history and physical examination, along with the proper laboratory and imaging studies, will assist with the diagnosis of AUB-O [6].

For a long time, the confusing concept of AUB, as well as challenges in diagnosing ovulatory disorders, hampered the advancement of AUB-O research. There has been relatively little research into the influencing factors for AUB-O. Rezende et al. reported that the prevalence rate of AUB was related to socioeconomic conditions [8]. According to a sub-research of Korea Nurses' Health Study, irregular menstrual cycles are attached to reproductive, lifestyle, and occupational factors [9]. Increasing age was found to be a risk factor for HMB, which is a distressing manifestation of AUB-O with a prevalence of 30% [10–13]. BMI was discovered to be related to menstrual disorders in a Mendelian randomization study [10], and the same finding was observed in a population-based cross-sectional investigation [14]. However, the risk factors of AUB-O are still unclear, and few studies have been performed to construct a predictive model for AUB-O.

To our best knowledge, this was the first study aimed to investigate the influencing factors and develop a predictive model of AUB-O based on a multicenter case-control study among Chinese women. This study may assist more patients and physicians in identifying AUB-O risk factors and taking appropriate preventative and therapeutic measures to promote female reproductive health

while lowering the occurrence of AUB-O and its associated invasive operations.

Methods

Design and participants

This multicenter case-control study was initiated by Women's Hospital, Zhejiang University School of Medicine, and completed collaboratively by 8 other hospitals from across Zhejiang Province. A total of 1789 women who presented to the outpatient clinics of the nine hospitals between April 2019 and January 2022 were recruited. To precisely screen individuals with AUB-O and rule out other causes of AUB, a systematic protocol was used to examine the participants, which comprised of a standardized questionnaire, anthropometric evaluations, physical examination, a transvaginal or transabdominal ultrasound, as well as a battery of laboratory tests such as blood/urine human chorionic gonadotropin, routine blood tests, and blood coagulation indexes. The study was approved by the Human Ethics Committee of Women's Hospital, Zhejiang University School of Medicine (No. 20180200). All participants provided written informed consent.

The definition of AUB-O is abnormal bleeding from the uterine cavity caused by an ovulatory dysfunction (including anovulation, oligo-ovulation, luteal phase defect, etc.) that is inconsistent with normal menstrual frequency (≥ 24 to ≤ 38 days), regularity (shortest to longest cycle variation: ≤ 7 days), duration (≤ 8 days), and volume (patient determined) [1, 4, 5]. The selection criteria of the AUB-O group were non-pregnant females of reproductive age who lived in Zhejiang Province and suffered from menstrual abnormalities. Women who experienced vaginal bleeding due to other causes of AUB (PALM-CEIN) [3] or caused by other organic diseases such as genital tract trauma were excluded. Controls were chosen from women of reproductive age with normal menstrual cycles, including normal regularity and frequency of menses, duration of flow, and amount of blood loss. Women with any of the following conditions were withdrawn from both the AUB-O and control groups: pregnant, lactating, or postmenopausal; history of malignant tumor; acute and chronic liver diseases; autoimmune diseases; neurological or psychiatric disorders; thyroid diseases; taking hormone therapy or anti-coagulants within 3 months. Finally, 391 women with AUB-O and 838 controls were enrolled in this research. To develop the predictive model, the total sample of women was randomly divided into two groups: 2/3 of the study population (development group, $n=822$) was used for predictive model design, and 1/3 of the study population (validation group, $n=407$) was used for validation (Supplemental Fig. 1 Flowchart).

Data collection

The study data was mainly collected by having participants fill out a standardized questionnaire with the assistance of trained medical personnel, comprising sociodemographic information, lifestyle and habits, reproductive history, menstruation, previous diseases, physical examination, assistant examination, and diagnoses and treatment. Body weight, height, and blood pressure were also recorded. BMI was calculated as weight (kg) divided by the square of height (m²). The main outcome variable was: the occurrence of AUB-O (Yes/No). From the total set of data, we selected the 49 independent variables listed below for this study:

General characteristics: age, BMI, systolic blood pressure (SBP), diastolic blood pressure, residence, marriage, education, occupational classification [15], working environment pollutants, and average monthly income.

Lifestyle and habits: Smoking, alcohol drinking, coffee drinking, tea drinking, diet, fatty food eating, pickled food eating, vegetables eating, fruits eating, physical exercise, dyed hair within 1 year, permed hair within 1 year, used hair gel within 6 months, used nail polish within 6 months, used cosmetics within 6 months, daily sleep duration, sleep quality, experienced mood swings within 6 months.

Menstrual and reproductive history: age of menarche, dysmenorrhea, sexual experience, age of first pregnancy, age of first birth, gravidity, parity, times of abortion, ectopic pregnancy, lactation, take contraception within 6 months.

Previous diseases: allergy, ovarian cyst, infertility, hyperprolactinemia, hypertension, diabetes, hyperlipidemia, tuberculosis, asthma, breast diseases.

Statistical analysis

Statistical analyses were performed using SPSS 27.0 for Windows (IBM, Armonk, NY, USA). Kolmogorov–Smirnov tests were used to determine the normality of the distributions. Data for continuous variables are presented as mean ± SD for normally distributed variables and median (25th percentile–75th percentile) for non-normally distributed variables. Continuous variable comparisons between two groups were evaluated using the t-test for equal variances or the Mann–Whitney U test for unequal variances. Categorical variables were presented as n (%) and compared using Pearson chi-square tests. All variables contained a maximum of 2.77% missing values. For all analyses, a *P*-value of < 0.05 was considered statistically significant.

In the development group, a univariate analysis was adopted to compare the 49 potential influencing factors of AUB-O between the two groups. Variables with *P*-values < 0.20 were included in the multivariate binary logistic regression model (forward LR, PIN = 0.05, POUT = 0.10) to identify predictors of AUB-O. A univariate analysis was then used to compare the homogeneity of the final predictors between the development and validation groups. The receiver operating characteristic curves (ROC) were designed to test the discrimination of the model in the development and validation groups. Area under curves (AUC) were calculated and assessed according to the Swet's criteria [16], whose values range from 0.5–0.6 (bad), 0.6–0.7 (poor), 0.7–0.8 (satisfactory), 0.8–0.9 (good), and 0.9–1.0 (excellent). The maximum Youden index, the optimal cutoff value, sensitivity and specificity were calculated. The Hosmer–Lemeshow Goodness-of-Fit Test and calibration curves were performed to assess the consistency of the predicted risk and actual risk, with a *P*-value > 0.05 indicating satisfactory discrimination. Finally, a tool for AUB-O risk calculation was designed by Excel for the purpose of clinical use.

Results

Univariate analysis of potential influencing factors associated with AUB-O

A total of 1229 women participated in the study, including 822 women in the development group and 407 women in the validation group. Women with AUB-O accounted for 32.00% of the development group and 31.45% of the validation group. In the development group, the average ages of the AUB-O group and control group were 41.31 ± 9.50 years and 35.95 ± 8.17 years (*P* < 0.001), and the median hemoglobin of the two groups was 115 (90–131) g/L and 128 (119–135) g/L (*P* < 0.001) (Supplemental Table 1).

The results of the univariate analysis were displayed in Supplemental Table 1. We identified 27 variables (*P* < 0.20) potentially associated with AUB-O among 49 variables to develop the predictive model by logistic regression analysis: age, BMI, SBP, residence, education, occupational classification, working environment pollutants, average monthly income, smoking, alcohol drinking, coffee drinking, tea drinking, diet, fruits eating, permed hair within 1 year, used hair gel within 6 months, used nail polish within 6 months, used cosmetics within 6 months, daily sleep duration, sleep quality, experienced mood swings within 6 months, age of menarche, parity, lactation, history of ovarian cyst, hypertension, history of breast diseases.

The influencing factors and final predictive model of AUB-O

As shown in Table 1, nine variables were found to be the independent influencing factors of AUB-O in the final predictive model: age, BMI, SBP, residence, diet, fruits eating, daily sleep duration, parity and history of ovarian cyst. There was no significant difference in any of the nine predictors between the development and validation groups (Table 2).

Logistic regression analysis found a higher risk of AUB-O in women with older age (OR 1.073, 95% CI 1.046–1.102), a higher BMI (OR 1.081, 95% CI 1.016–1.151) and SBP (OR 1.016, 95% CI 1.002–1.029), living in rural areas (OR 2.451, 95% CI 1.727–3.478), having a plant-based diet (OR 2.306, 95% CI 1.415–3.759), eating fruits < 4 times per week (OR 1.887, 95% CI 1.282–2.776) and having a history of ovarian history (OR 1.880, 95% CI 1.305–2.710). On the contrary, women who were multiparous (parity = 1, OR 0.424, 95% CI 0.239 – 0.752; parity > 1, OR 0.450, 95% CI 0.247 – 0.822) and had a longer daily sleep duration (OR 0.819; 95% CI 0.708 – 0.946) were at a decreased risk of AUB-O (Table 1).

The maximum Youden index of the model is 0.42, and the optimal cutoff value is 30.15%, with a sensitivity valued at 0.72 and a specificity valued at 0.71. A tool for AUB-O risk calculation was shown in Additional file 2.

Table 1 Risk predictive model for AUB-O

Predictor	β	OR (95%CI)	P-value
Age	0.071	1.073 (1.046–1.102)	< 0.001
BMI	0.078	1.081 (1.016–1.151)	0.015
SBP	0.016	1.016 (1.002–1.029)	0.023
Residence			
Urban		1 (Ref)	
Rural	0.896	2.451 (1.727–3.478)	< 0.001
Diet			0.003
With meat and vegetables		1 (Ref)	
Meat-based diet	-0.002	0.998 (0.495–2.010)	0.995
Plant-based diet	0.836	2.306 (1.415–3.759)	< 0.001
Fruits eating			
≥ 4 times per week		1 (Ref)	
< 4 times per week	0.635	1.887 (1.282–2.776)	0.001
Daily sleep duration	-0.200	0.819 (0.708–0.946)	0.007
Parity			0.012
0		1 (Ref)	
1	-0.858	0.424 (0.239–0.752)	0.003
> 1	-0.798	0.450 (0.247–0.822)	0.009
History of ovarian cyst			
No		1 (Ref)	
Yes	0.631	1.880 (1.305–2.710)	< 0.001

Abbreviations: BMI body mass index, SBP systolic blood pressure

Validation of the predictive model of AUB-O: discrimination and calibration

In the development group, the AUC of ROC was 0.77 (95% CI 0.74 – 0.81), indicating satisfactory discrimination and predictive ability of the model. The AUC of ROC in the validation group obtained 0.73 (95% CI 0.67 – 0.79), which was also satisfactory (Fig. 1).

The calibration curve was in high coincidence with the standard curve in the development group, suggesting the predicted risk of the model is highly consistent with the actual AUB-O risk. Meanwhile, the calibration curve and the standard curve were close to each other in the validation group (Fig. 2).

Discussion

A predictive model was developed based on our case-control study, with satisfactory predictive ability and calibration. The predictors involved in the model are age, BMI, SBP, residence, diet, fruits eating, daily sleep duration, parity, and history of ovarian cyst.

Due to the imprecise terminologies and definitions and the lack of a standardized etiologic classification system in the past, the investigation and management of AUB were hampered for a long time [1–4, 8]. To our knowledge, there are only a few studies focused on the prediction of AUB and no predictive model for AUB-O. Xu et al. proposed the combination of vaginal ultrasonography and bleeding pattern had a good predictive value for AUB. They discovered that BMI, dysmenorrhea, endometrial thickness, diabetes, hypertension, and polycystic ovarian syndrome were related factors of AUB [17]. An analysis of medication-induced heavy bleeding in women with severe mental illnesses conducted in China revealed that some metabolic profiles and antipsychotic therapies were risk factors for heavy bleeding [18]. Four cross-sectional studies [9, 10, 19, 20] conducted in different countries investigated the local prevalence of AUB and associated factors, but with controversial conclusions, suggesting racial differences in AUB prevalence and risk factors might exist.

In our findings, older age was a risk factor of AUB-O. Kazemijalish et al. investigated 1393 Iranian women aged 15–45 years to explore the prevalence of AUB and its associated factors, and they observed an increasing prevalence of AUB in older women [10], which agreed with our findings. The Israel researchers carried out an online national questionnaire survey to evaluate menstrual disorders among COVID-19 vaccinated and infected women, and they identified increasing age might be a contributor of AUB after COVID-19 vaccination [13]. However, a Chinese study discovered an inverse relationship between age and HMB in 2356 women aged

Table 2 Comparison of predictors between development and validation groups

Predictor	Development Group (n=822)	Validation Group (n=407)	P-value
Age (year) ^a	37.67 ± 8.97	37.67 ± 9.29	0.994
BMI (kg / m ²) ^a	21.98 ± 2.85	21.88 ± 2.99	0.570
SBP (mmHg) ^b	116 (108 124)	116(108 126)	0.944
Residence ^c			0.586
Urban	564 (68.61)	273 (67.08)	
Rural	258 (31.39)	134 (32.92)	
Diet ^c			0.325
With meat and vegetables	674 (82.00)	321 (78.87)	
Meat-based diet	50 (6.08)	33 (8.11)	
Plant-based diet	98 (11.92)	53 (13.02)	
Fruits eating ^c			0.989
≥ 4 times per week	646 (78.59)	320 (78.62)	
< 4 times per week	176 (21.41)	87 (21.38)	
Daily sleep duration (hour) ^b	8.00 (7.00 8.00)	7.50 (7.00 8.00)	0.379
Parity ^c			0.697
0	170 (20.68)	90 (22.11)	
1	375 (45.62)	189 (46.44)	
> 1	277 (33.70)	128 (31.45)	
History of ovarian cyst ^c			0.543
No	613 (74.57)	310 (76.17)	
Yes	209 (25.43)	97 (23.83)	

Abbreviations: BMI body mass index, SBP systolic blood pressure

^a Mean ± SD; t test

^b Median (P25 P75); Mann–Whitney U test

^c n (%); Pearson chi-square test

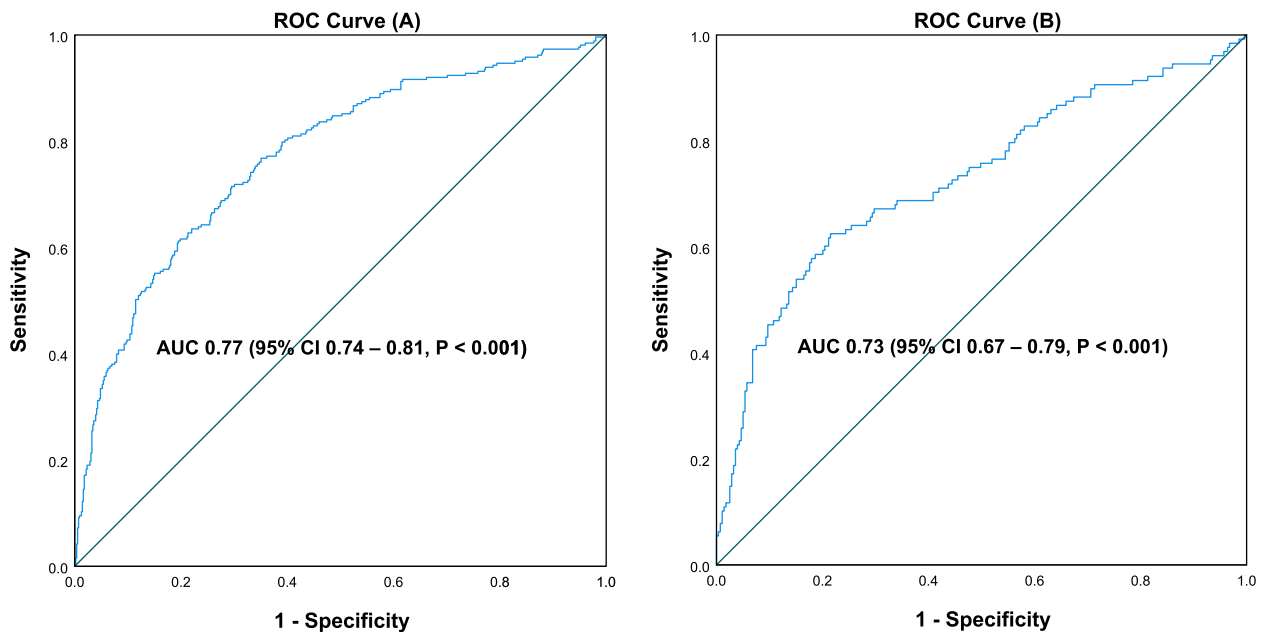


Fig. 1 ROC curve of the predictive model for the development group (A) and the validation group (B)

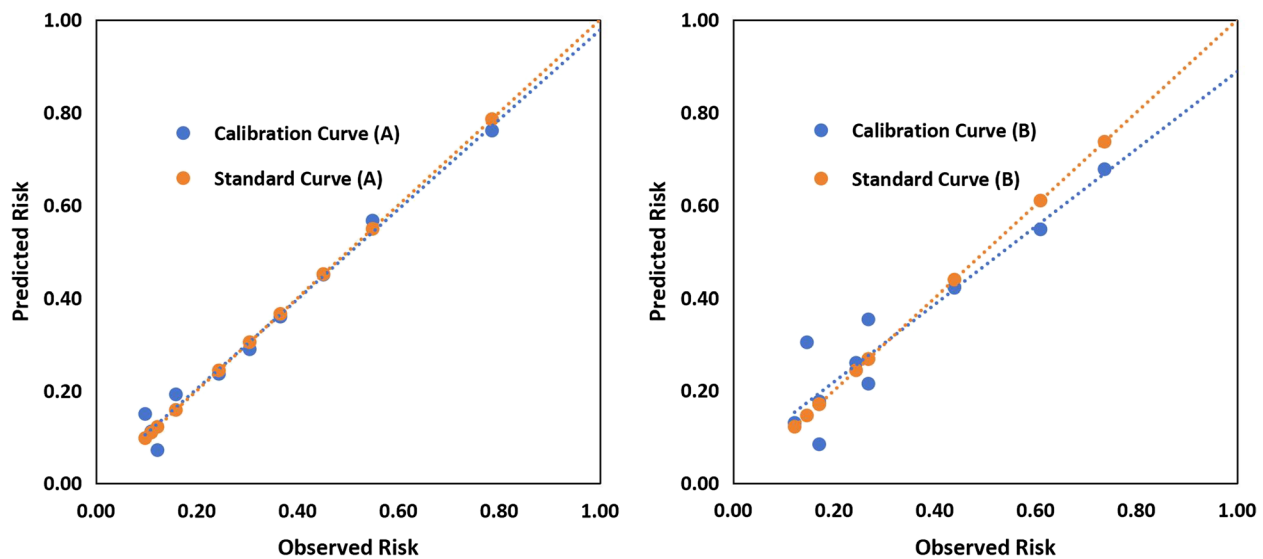


Fig. 2 Calibration curve of the predictive model for the development group (A) and the validation group (B)

18–50 years [20]. The consensus seems to be that ovulatory disorders are more prevalent in females during adolescence and the menopausal transition [7], while more research is still needed to determine the exact mechanisms underlying how menstruation changes as people age.

BMI was another risk factor of AUB-O in our research. Besides aging, the Iranian research also found higher BMI was related to AUB [10]. A Mendelian randomization study [14] investigated 257,193 women of European ancestry in UK Biobank and publicly available genome-wide association studies (GWASs) and revealed that numerous female reproductive disorders are correlated with obesity. Higher BMI was observationally associated with HMB in their study, and leptin and insulin resistance were potential mediators between obesity and female reproductive health [14]. Mena et al. conducted a prospective cohort study based on the Australian Longitudinal Study of Women's Health (ALSWH) and found that overweight and obese women had a higher risk of irregular periods and HMB, but this effect could be weakened by high levels of physical activity [21]. As estrogen is converted from androstenedione in adipose tissue by aromatase, obese individuals typically have high estrogen levels. In addition, obese women's sex hormone-binding globulin (SHBG) dropped while their insulin levels rose, promoting the production of androgens. Ovulation and menstrual disorders, including irregular bleeding, oligomenorrhoea, and amenorrhoea, are caused by these changes in gonadal steroid concentrations connected to obesity [22].

In Korean female adolescents, sleep duration and irregular menstrual cycles were found to be

significantly inversely correlated [23], which was in coincidence with our findings. Hall et al. recruited 11 healthy females to receive a 40-h simultaneous polysomnographic sleep monitoring and luteinizing hormone (LH) measurement, women in the early follicular phase experienced a nocturnal decrease in mean LH and LH pulse frequency due to the inhibited LH and gonadotropin-releasing hormone secretion by sleep [24]. Women's reproductive function such as folliculogenesis, ovulation, menstruation, hormone synthesis, and secretion can be hampered by sleep deprivation, disruption, dysrhythmia, and disorders, and the complex molecular-genetic and hormonal pathways play a major role in mediating these relationships [25].

Multiparity was found to be a beneficial factor for AUB-O in our study. He et al. reported a lower chance of gravidity and parity in women with oligomenorrhoea [26]. Grimes et al. examined anti-mullerian hormone levels in a subset of premenopausal women in the Nurses' Health Study II. They discovered positive correlations between parity and both the level of anti-mullerian hormone and the timing of menopause, but these relations vanished after further parity adjustment [27]. Meanwhile, a cross-sectional study found a significant correlation between parity and higher levels of ovarian reserve markers [28]. A population-based cohort study included premenopausal participants aged 25 to 42 years at baseline in the Nurses' Health Study II cohort proposed that parity had an inverse relationship with the risk of early menopause [29]. Similar outcomes were observed in a pooled study carried out by Mishra et al. [30]. Pregnancy inhibits ovulation and may slow the loss of ovarian follicles, which delays menopause

[29]. In summary, we speculate that multiparity may have beneficial effects on ovarian function.

Balanced diet is a critical component for the normal functioning of the hypothalamic-ovarian axis, which has considerable promise for improving many chronic gynecologic illnesses and reproductive health [31, 32]. A diet rich in fruits and vegetables has a protective impact that lowers the risk of uterine fibroids and endometriosis [33, 34]. The Mediterranean diet and Dietary Approaches to Stop Hypertension (DASH) diet are two internationally recognized healthy dietary patterns. They have auxiliary therapeutic effects on weight control, prevention and control of cardiovascular diseases, diabetes and many other diseases. Recently, a study reported that these two healthy diets also has the ability to promote the ovarian morphology and function [35]. Compared to the age- and BMI-matched healthy non-vegetarians, women with PCOS who followed an Indian vegetarian diet had greater levels of pro-inflammatory and lower levels of anti-inflammatory markers [36].

Rural Chinese women appeared to be at a higher risk of developing AUB-O than urban residents. There are currently few research focusing on the differences in female reproductive health between urban and rural locations. Rural women, according to Wang et al., have a higher proportion of osteoporosis than women lived in urban areas [37]. A study on Chinese all-cause mortality rate found that the health status of rural residents in China is generally worse than that of urban and suburban residents [38]. In general, the majority of rural Chinese women have lower income and education levels, and poorer health perceptions and medical resources than urban women. The lifestyle disparities between urban and rural women are significant, which may result in physical variations [37].

Despite of the insignificant difference in hypertension between the AUB-O and control groups (Supplemental Table 1), we identified that SBP was a risk factor for AUB-O. In contrast to controls, women with PCOS had significantly higher blood pressure [39]; however, this difference was not seen in women with POI [40]. Estrogen plays a protective effect on the cardiovascular system, ovarian dysfunction could probably interfere with its secretion. Generally, benign ovarian cysts have little effect on ovarian function. However, we found that a history of ovarian cyst was another risk factor of AUB-O. We did not perform any additional pathological classification of ovarian cysts in our study, some of which may impair ovarian ovulation and endocrine function. In the recent Delphi consensus process [7], there was now broad agreement that ovarian tumors, both benign and malignant, may play a role in ovulatory disorders.

These findings may prompt more people to consider the impact of an ovarian cyst on ovarian function.

Our study has some limitations. Firstly, recall bias might exist in the data collection process. However, participants completed the questionnaires with the help of trained medical personnel, ensuring the reliability of data. Secondly, limited by the retrospective observational method, our study can only illustrate the association between exposure factors and AUB-O, but cannot prove a causation between them. In addition, the data used to develop and validate the model was completely from China, which might limit the generalizability of the model in other countries. Further research is required in a broader range of ethnicities. Regarding the strength of the study, our predictive model presented a satisfactory prediction and calibration capability with a large sample. Our study proposes the prediction model of AUB-O for the first time, which provides a new tool for public-health workers to assess the risk of AUB-O.

Conclusion

A predictive model for AUB-O with moderate diagnostic accuracy has been developed. This simple and straightforward tool can assist medical personnel in identifying high-risk groups and taking interventions whenever possible. However, further research is needed to verify and expand our model in the future.

Abbreviations

AUB	Abnormal uterine bleeding
AUB-O	Abnormal uterine bleeding associated with ovulatory dysfunction
HMB	Heavy menstrual bleeding
PCOS	Polycystic ovary syndrome
POI	Premature ovarian failure
BMI	Body mass index
SBP	Systolic blood pressure
ROC	The receiver operating characteristic curve
AUC	Area under curves
LH	Luteinizing hormone

Supplementary Information

The online version contains supplementary material available at <https://doi.org/10.1186/s12905-023-02589-5>.

Additional file 1: Supplemental Fig. 1. Flowchart. **Supplemental Table 1.** Comparison of potential influencing factors associated with AUB-O between the two groups. **Supplemental Table 2.** Assignment of predictive factors of AUB-O.

Additional file 2.

Acknowledgements

We thank all the women who participated in this study. Also, we thank all the technologists coming from the following nine hospitals in Zhejiang Province for their cooperation and contribution to this study: Women's Hospital, Zhejiang University School of Medicine; Tongde Hospital of Zhejiang Province; the first Affiliated Hospital of Wenzhou Medical University; the Second Affiliated Hospital and Yuying Children's Hospital of Wenzhou Medical University; the

First Hospital of Jiaxing; Quzhou Maternal and Child Health Hospital; the Second Hospital of Shaoxing; Ningbo Jiangbei District Maternal and Child Health Hospital; Pujiang Maternal and Child Health Hospital.

Authors' contributions

Conceptualization, study design and methodology: YZ, YXJ, YZH, FR, QY, LJM, JL and JHZ; Data curation: YZ, ZL, YXJ and YXZ; Data analysis: YZ and YZH; Writing—Original Draft, YZ; Writing—Review & Editing: ZL and YZH; Funding acquisition: JL and JHZ; Project administration: JL and JHZ. All authors read and approved the final manuscript.

Funding

This work was supported by the Key Research and Development Projects in Zhejiang Province (2019C03026); Zhejiang Provincial Natural Science Foundation of China (LGF20H040009).

Availability of data and materials

The datasets used and/or analysed during the current study are available from the corresponding author on reasonable request.

Declarations

Ethics approval and consent to participate

This study was conducted according to the Declaration of Helsinki. All participants provided written informed consent. The ethics committee of Women's Hospital, Zhejiang University School of Medicine has approved the study (No. 20180200).

Consent for publication

Not applicable.

Competing interests

The authors declare no competing interests.

Author details

¹Women's Hospital, Zhejiang University School of Medicine, Hangzhou 310006, Zhejiang, China. ²Zhejiang Provincial Clinical Research Center for Obstetrics and Gynecology, Zhejiang, China. ³Guizhou Provincial People's Hospital, Guiyang 550001, Guizhou, China. ⁴Zhejiang Cancer Hospital, Hangzhou 310022, Zhejiang, China.

Received: 2 December 2022 Accepted: 4 August 2023

Published online: 12 October 2023

References

- Munro MG, Critchley HOD, Fraser IS, the FIGO Menstrual Disorders Committee. The two FIGO systems for normal and abnormal uterine bleeding symptoms and classification of causes of abnormal uterine bleeding in the reproductive years: 2018 revisions. *Int J Gynecol Obstet*. 2018;143:393–408.
- MacGregor R, Jain V, Hillman S, Lumsden MA. Investigating abnormal uterine bleeding in reproductive aged women. *BMJ*. 2022;378:e070906.
- Munro MG, Critchley HOD, Broder MS, Fraser IS, for the FIGO Working Group on Menstrual Disorders. FIGO classification system (PALM-COEN) for causes of abnormal uterine bleeding in nongravid women of reproductive age. *Int J Gynecol Obstet*. 2011;113:3–13.
- Subgroup GE, Gynecology CS of O and, Association CM. Chinese guideline for diagnosis and management of abnormal uterine bleeding caused by ovulatory dysfunction. *Chin J Obstet Gynecol*. 2018;53:801–7.
- Munro MG, Critchley HOD, Fraser IS. The FIGO classification of causes of abnormal uterine bleeding in the reproductive years. *Fertil Steril*. 2011;95:2204–2208.e3.
- The American College of Obstetricians and Gynecologists. Management of Abnormal Uterine Bleeding Associated With Ovulatory Dysfunction. *Obstet Gynecol*. 2013;102:203–13.
- Munro MG, Balen AH, Cho S, Critchley HOD, Diaz I, Ferriani R, et al. The FIGO ovulatory disorders classification system. *Hum Reprod Oxford University Press*. 2022;37:2446–64.
- Rezende GP, Gomes DAY, Benetti-Pinto CL. Prevalence of abnormal uterine bleeding in Brazilian women: Association between self-perception and objective parameters. *PLoS One*. 2023;18:e0282605.
- Song S, Choi H, Pang Y, Kim O, Park H-Y. Factors associated with regularity and length of menstrual cycle: Korea Nurses' Health Study. *BMC Womens Health BioMed Central*. 2022;22:1–12.
- Kazemijaliseh H, Tehrani FR, Behboudi-Gandevani S, Khalili D, Hosseinpahanih F, Azizi F. A population-based study of the prevalence of abnormal uterine bleeding and its related factors among Iranian reproductive-age women: an updated data. *Arch Iran Med*. 2017;20:558–63.
- La D, Am D. Assessment and Management of Heavy Menstrual Bleeding. *JAMA*. 2020;323:270–1.
- Vannuccini S, Jain V, Critchley H, Petraglia F. From menarche to menopause, heavy menstrual bleeding is the underrated compass in reproductive health. *Fertil Steril*. 2022;118:625–36.
- Issakov G, Tzur Y, Friedman T, Tzur T. Abnormal uterine bleeding among COVID-19 vaccinated and recovered women: a national survey. *Reprod Sci*. 2023;30(2):713–21.
- Venkatesh SS, Ferreira T, Benonisdottir S, Rahmioglu N, Becker CM, Granne I, et al. Obesity and risk of female reproductive conditions: A Mendelian randomisation study. *PLoS Med*. 2022;19:e1003679.
- Ministry of Human Resources and Social Security of the People's Republic of China. The new edition of occupational classification code determined 1481 occupations. Available from: http://www.mohrss.gov.cn/SYrlzyhshbzb/dongtaixinwen/buneyiaowen/rsxw/202207/t20220714_457800.html. [Cited 2022 Oct 26].
- Ja S. Measuring the accuracy of diagnostic systems. *Science*. 1988;240:1285–93.
- Xu Y, Xie D. Prediction of factors associated with abnormal uterine bleeding by transvaginal ultrasound combined with bleeding pattern. Hussein AF, editor. *Comput Math Methods Med*. 2022;2022:1–8.
- Shan J, Tian H, Zhou C, Wang H, Ma X, Li R, et al. Prevalence of heavy menstrual bleeding and its associated cognitive risks and predictive factors in women with severe mental disorders. *Front Pharmacol*. 2022;13:904908.
- Gerema U, Kene K, Abera D, Adugna T, Nigussie M, Dereje D, et al. Abnormal uterine bleeding and associated factors among reproductive age women in Jimma town, Oromia Region, Southwest Ethiopia. *Womens Health SAGE Publications Ltd STM*. 2022;18:1–7.
- Ding C, Wang J, Cao Y, Pan Y, Lu X, Wang W, et al. Heavy menstrual bleeding among women aged 18–50 years living in Beijing, China: prevalence, risk factors, and impact on daily life. *BMC Womens Health*. 2019;19:27.
- Mena GP, Mielke GI, Brown WJ. Prospective associations between physical activity and BMI with irregular periods and heavy menstrual bleeding in a large cohort of Australian women. *Hum Reprod Oxford Academic*. 2021;36:1481–91.
- Seif MW, Diamond K, Nickkho-Amiry M. Obesity and menstrual disorders. *Best Pract Res Clin Obstet Gynaecol*. 2015;29:516–27.
- Nam GE, Han K, Lee G. Association between sleep duration and menstrual cycle irregularity in Korean female adolescents. *Sleep Med*. 2017;35:62–6.
- Hall JE, Sullivan JP, Richardson GS. Brief Wake Episodes Modulate Sleep-Inhibited Luteinizing Hormone Secretion in the Early Follicular Phase. *J Clin Endocrinol Metab Oxford Academic*. 2005;90:2050–5.
- Beroukhim G, Esencan E, Seifer DB. Impact of sleep patterns upon female neuroendocrinology and reproductive outcomes: a comprehensive review. *Reprod Biol Endocrinol*. 2022;20:16.
- He Y, Zheng D, Shang W, Wang X, Zhao S, Wei Z, et al. Prevalence of oligomenorrhea among women of childbearing age in China: A large community-based study. *Womens Health*. London, England: SAGE Publications Sage UK; 2020;16:1–9.
- Grimes NP, Whitcomb BW, Reeves KW, Sievert LL, Purdue-Smithe A, Manson JE, et al. The association of parity and breastfeeding with anti-Müllerian hormone levels at two time points. *Maturitas*. 2022;155:1–7.
- Moini A, Hedayatshodeh M, Hosseini R, Rastad H. Association between parity and ovarian reserve in reproductive age women. *Eur J Obstet Gynecol Reprod Biol*. 2016;207:184–7.
- Langton CR, Whitcomb BW, Purdue-Smithe AC, Sievert LL, Hankinson SE, Manson JE, et al. Association of parity and breastfeeding with risk of early natural menopause. *JAMA Netw Open*. 2020;3:e1919615.

30. Mishra GD, Pandeya N, Dobson AJ, Chung H-F, Anderson D, Kuh D, et al. Early menarche, nulliparity and the risk for premature and early natural menopause. *Hum Reprod Oxford Academic*. 2017;32:679–86.
31. Kudesia R, Alexander M, Gulati M, Kennard A, Tollefson M. Dietary Approaches to Women's Sexual and Reproductive Health. *Am J Lifestyle Med*. 2021;15:414–24.
32. Huhmann K. Menses requires energy: a review of how disordered eating, excessive exercise, and high stress lead to menstrual irregularities. *Clin Ther Clin Ther*. 2020;42:401–7.
33. Szydłowska I, Nawrocka-Rutkowska J, Brodowska A, Marciniak A, Starczewski A, Szczuko M. Dietary Natural Compounds and Vitamins as Potential Cofactors in Uterine Fibroids Growth and Development. *Nutrients*. 2022;14:734.
34. Halpern G, Schor E, Kopelman A. Nutritional aspects related to endometriosis. *Rev Assoc Médica Bras*. 2015;61:519–23.
35. Kazemi M, Jarrett BY, Vanden Brink H, Lin AW, Hoeger KM, Spandorfer SD, et al. Obesity, insulin resistance, and hyperandrogenism mediate the link between poor diet quality and ovarian dysmorphology in reproductive-aged women. *Nutrients*. 2020;12:1953.
36. Ganie MA, Sahar T, Rashid A, Wani IA, Nisar S, Sathyapalan T, et al. Comparative evaluation of biomarkers of inflammation among indian women with polycystic ovary syndrome (PCOS) Consuming Vegetarian vs. Non-vegetarian Diet *Front Endocrinol*. 2019;10:699.
37. Wang J, Zhang W, Wang X, Li C, Li J, Zhao Y, et al. Urban-rural differences in bone mineral density and its association with reproductive and menstrual factors among older women. *Calcif Tissue Int*. 2020;106:637–45.
38. Yu X, Zhang W. All-cause mortality rate in China: do residents in economically developed regions have better health? *Int J Equity Health BioMed Central*. 2020;19:1–10.
39. Tiwari R, Bajpai M, Tiwari S, Agrawal S. Comparison of frequency domain parameters of heart rate variability between women with polycystic ovarian disease and apparently healthy women. *J Fam Med Prim Care*. 2022;11:3245–50.
40. Cai W-Y, Luo X, Wu W, Song J, Xie N-N, Duan C, et al. Metabolic differences in women with premature ovarian insufficiency: a systematic review and meta-analysis. *J Ovarian Res BioMed Central*. 2022;15:1–12.

Publisher's Note

Springer Nature remains neutral with regard to jurisdictional claims in published maps and institutional affiliations.

Ready to submit your research? Choose BMC and benefit from:

- fast, convenient online submission
- thorough peer review by experienced researchers in your field
- rapid publication on acceptance
- support for research data, including large and complex data types
- gold Open Access which fosters wider collaboration and increased citations
- maximum visibility for your research: over 100M website views per year

At BMC, research is always in progress.

Learn more biomedcentral.com/submissions

