

RESEARCH ARTICLE

Open Access



# Novel anti-CD38 humanized mAb SG003 possessed enhanced cytotoxicity in lymphoma than Daratumumab via antibody-dependent cell-mediated cytotoxicity

Tao Yu<sup>1†</sup>, Chunxia Qiao<sup>2†</sup>, Ming Lv<sup>3</sup> and Luqun Tang<sup>4\*</sup>

## Abstract

**Background:** In vivo use of monoclonal antibodies has become routine clinical practice in the treatment of human cancer. CD38 is an attractive target, because it has double roles, as a receptor and an ectoenzyme. Daratumumab, an anti-CD38 antibody, is currently in the clinical trials for multiple myeloma.

**Results:** Here we obtained a humanized anti-CD38 antibody, SG003, using SDR-grafting method. SG003 possessed stronger antigen binding activity than Daratumumab, and its epitope was far from that of Daratumumab, an anti-CD38 antibody currently in the clinical trials for multiple myeloma; besides, SG003 showed enhanced antibody-dependent cell-mediated cytotoxicity function and in vivo inhibitory efficacy of tumor growth in xenograft mice model.

**Conclusion:** SG003 seemed to be a good option to improve the curative effect of CD38-related cancers.

**Keywords:** CD38, Daratumumab, Monoclonal antibody, SDR-grafted humanization

## Background

The majority of therapeutic strategies for cancer treatment targets surface molecules expressed by solid tumors or leukemic cells, e.g. *erbB2*, and *CD20*, etc., one of which is human CD38. CD38 is a 46-kDa type II trans-membrane glycoprotein with a long 256AA extracellular domain and a short 20AA N-terminal cytoplasmic tail. Functions of CD38 include receptor-mediated activation and ectoenzymatic activities that contribute to intracellular calcium mobilization. CD38 is defined originally as a T-cell activation molecule. Under normal conditions, it's expressed highly in committed progenitor bone marrow (early BM cells are CD38 negative), and B lymphocytes in germinal centers. It is also expressed at low levels on lymphoid and myeloid cells and in some tissues of non-hematopoietic origin [1]; besides, many studies reported that myeloma

cells express CD38 in the overwhelming majority of patients, although at varying surface densities. CD38 signals may operate on a myeloma background by modulating miRNAs. For example, among the miRNAs downregulated by CD38 ligation, miR-193b functions as a tumor suppressor miRNA [2]. In a word, its high expression on the cells in multiple myeloma (MM) [3] suggest it a potential therapeutic monoclonal antibody (mAb) target in MM.

By now, several effective anti-human CD38 mAbs have been generated against several forms of human CD38+ cancers such as MM [4–6]. Daratumumab, a human mAb, is a first-class anti-CD38 therapeutic antibody approved by FDA for the treatment of relapsed multiple myeloma in 2015 that represents unique cytotoxic activities [7]. In SCID mouse xenograft tumor model, Daratumumab was active even at low concentrations [7]. CDC function was an important feature of Daratumumab, while less of other anti-CD38 antibodies could kill tumor cells by CDC function. In addition to CDC, Daratumumab induced ADCC function only in some kinds of cancer cells,

\* Correspondence: [tangluqun@aliyun.com](mailto:tangluqun@aliyun.com)

<sup>†</sup>Tao Yu and Chunxia Qiao contributed equally to this work.

<sup>4</sup>Department of Radiation Oncology, the Second Affiliated Hospital of Nanjing Medical University, Nanjing 210011, China

Full list of author information is available at the end of the article



e.g. leukemia cells, or patient MM tumor cells. Nijhof et al. [8] reported that in bone marrow samples, Daratumumab induced both CDC and ADCC in vitro effectively, and there is a significant association between Daratumumab-induced CDC/ADCC and the expression level of CD38 in MM patients. Recently, Schutze et al. have generated a CD38-specific biparatopic heavy chain antibodies, which elicited CDC toward CD38-expressing myeloma cells more effectively than daratumumab [9].

The satisfactory function of Daratumumab in pre-clinical research led to its clinical trials. In the first phase 1/2 clinical trial, Daratumumab was administered as a single agent in relapsed/refractory myeloma patients. In the group of 16 mg/kg, the ORR (overall response rate) was 36%, and the DOR (median duration of response) was not reached; besides, the rate of PFS (progression-free survival) over 12-month reached up to 65% [10, 11]; then, in the phase II trial (SIRIUS), the median PFS of MM patients was 3.7 months, and 12-month OS (overall survival) rate was 64.8% [12]; In SIRIUS and GEN501 studies [13], the ORR was 31%, and the OS was about 19.9 months, demonstrating that Daratumumab monotherapy was beneficial in patients with pre-treated and/or relapsed/refractory myeloma [14, 15]; meanwhile, Daratumumab is also under investigation in combination with other MM regimens [16]; Besides, two additional anti-CD38 antibodies have also entered clinical trials for MM and other CD38+ hematologic malignancies, MOR202 [17, 18] and isatuximab (SAR650984) [19], that are being tested alone and in combination with standard therapy.

In chronic lymphocytic leukemia (CLL), CD38 is also one of the surface molecular markers for clinical use [20]. It is now generally accepted that CD38+ leukemia patients have a shorter progression-free interval, require earlier and more frequent treatments, and ultimately lower survival rate. Daratumumab was tested to have anti-tumor activity in leukemia [21, 22]. Recently, our team screened a mouse-anti-CD38 mAb, 3G3, by hybridoma technology, which showed good anti-leukemia activity in vitro. Here we humanized 3G3 to have a SDR-grafted antibody, SG003, whose affinity to bind to CD38 was higher than Daratumumab, and the epitope of SG003 was different from that of Daratumumab; moreover, SG003 showed stronger ADCC function and in vivo inhibitory efficacy of tumor growth in xenograft mice model, suggesting its potential to achieve improved curative effect in patients with leukemia.

## Results

### 3G3 can kill the lymphocytes by ADCC function

3G3 was screened out using classical hybridoma technology. It bound to the antigen CD38 on a dose-dependent manner both by ELISA (Fig. 1a) and flow cytometry in

Raji cells (Fig. 1b and c); meanwhile, 3G3 showed satisfactory cytotoxicity function on a dose-dependent manner. According to the ADCC results in Raji cells, the  $EC_{50}$  value of 3G3 was about 0.005  $\mu\text{g}/\text{mL}$  (Fig. 1d).

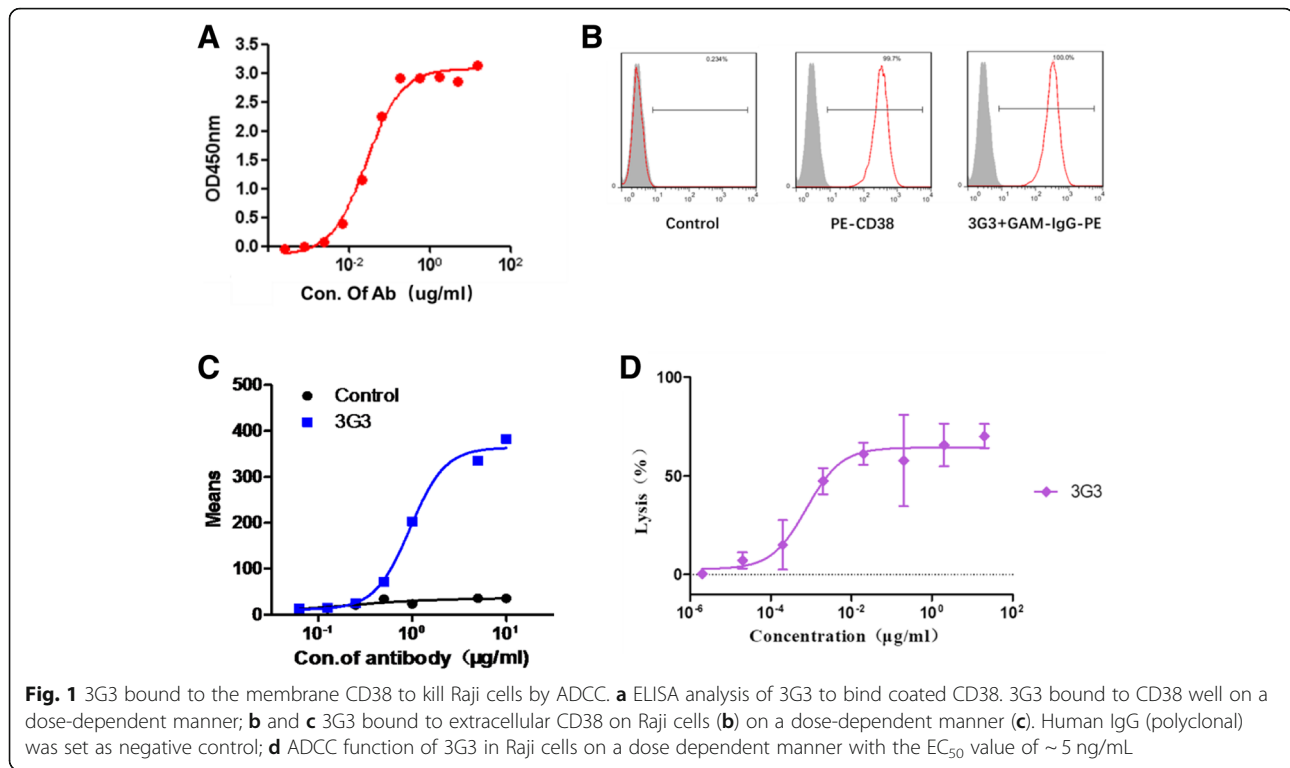
### SG003 possessed stronger antigen binding activity than Daratumumab

3G3 was humanized using CDR- or SDR-grafting method, and SG003, which was obtained from SDR-grafting, was identified similar to 3G3 in CD38 binding. As shown in Fig. 2a, ELISA assay displayed satisfactory bio-function of both CDR-grafted 3G3 (anti-CD38-CDR) and SDR-grafted 3G3 (anti-CD38-SDR, also named SG003) to bind the soluble CD38 on a dose-dependent manner, which was similar to 3G3; furthermore, according to the BiAcCore analysis data, SG003 possessed similar affinity to 3G3 (Fig. 2b), with the  $K_a$  and  $K_d$  value of  $2.86 \times 10^6$  1/Ms. and  $9.18 \times 10^{-4}$  1/s, respectively (Table 1).

Meanwhile, we compared SG003 with the first-in-class anti-CD38 therapeutic antibody Daratumumab. Dosage ELISA showed the  $EC_{50}$  value of SG003 as 0.0498  $\mu\text{g}/\text{mL}$  to bind the coated sCD38, which is  $\sim 6$  times stronger than Daratumumab ( $EC_{50} = 0.3005 \mu\text{g}/\text{mL}$ ); moreover, the maximum OD value of SG003 was obviously higher than Daratumumab (Fig. 3a, 2.4 of SG003 V.S. 1.5 of Daratumumab); Similarly, flow cytometry assays also showed that SG003 had stronger cell surface CD38-binding activity than Daratumumab in either Raji (Fig. 3b) or Daudi (Fig. 3c) cells. More importantly, the mean value of SG003 group was much higher, suggesting that SG003 might bound to the extracellular domain of CD38 in vivo, thus possibly induce stronger cytotoxicity. More importantly, SG003 had no/weak cross-reactivity to bind CD38- tumor cells (e.g. 293 T) by flow cytometry detection (Fig. 4a), or a series of extracellular domain of many receptors/glycol-proteins (e.g. CD47, CD19, AXL, TROP2, GAS6, etc.) by ELISA detection (Fig. 4b).

### The epitope of SG003 was different from that of Daratumumab

Using antibody homological modeling, molecular docking, and dynamic simulation methods, we constructed the theoretical structure of CD38 and SG003 complex (Fig. 5a), according to which the potential epitope of SG003 located in  ${}^{76}\text{E}{}^{78}\text{R}{}^{79}\text{H}{}^{107}\text{Q}{}^{111}\text{K}{}^{114}\text{T}{}^{115}\text{Q}{}^{116}\text{T}{}^{117}\text{V}{}^{194}\text{R}{}^{195}\text{R}{}^{198}\text{E}{}^{233}\text{E}{}^{234}\text{K}$  of CD38. Then, a series of CD38 mutants were designed using alanine replacement (Fig. 5b) and displayed on 293 T cell surface method. As shown in Fig. 5c, SG003 couldn't bind to these mutants, confirming the importance of residues 76–79, 107–117, 194–198 and 233–234 to recognize SG003. Meanwhile, the epitope of Daratumumab was 233–246 and 267–280 of CD38 [7], which was far



from that of SG003; Moreover, in ADCC assays, the EC<sub>50</sub> value of SG003 was 0.0146 µg/mL in Raji (Fig. 6a), and 0.00056 µg/mL in Daudi cells (Fig. 6b), both of which were lower than that of Daratumumab (0.0262 and 0.0033 µg/mL, respectively). We inferred SG003's epitope might contribute to its stronger ADCC function, even though the mechanism was unknown to need further study.

#### SG003 inhibits the growth of xenograft tumor in SCID mice

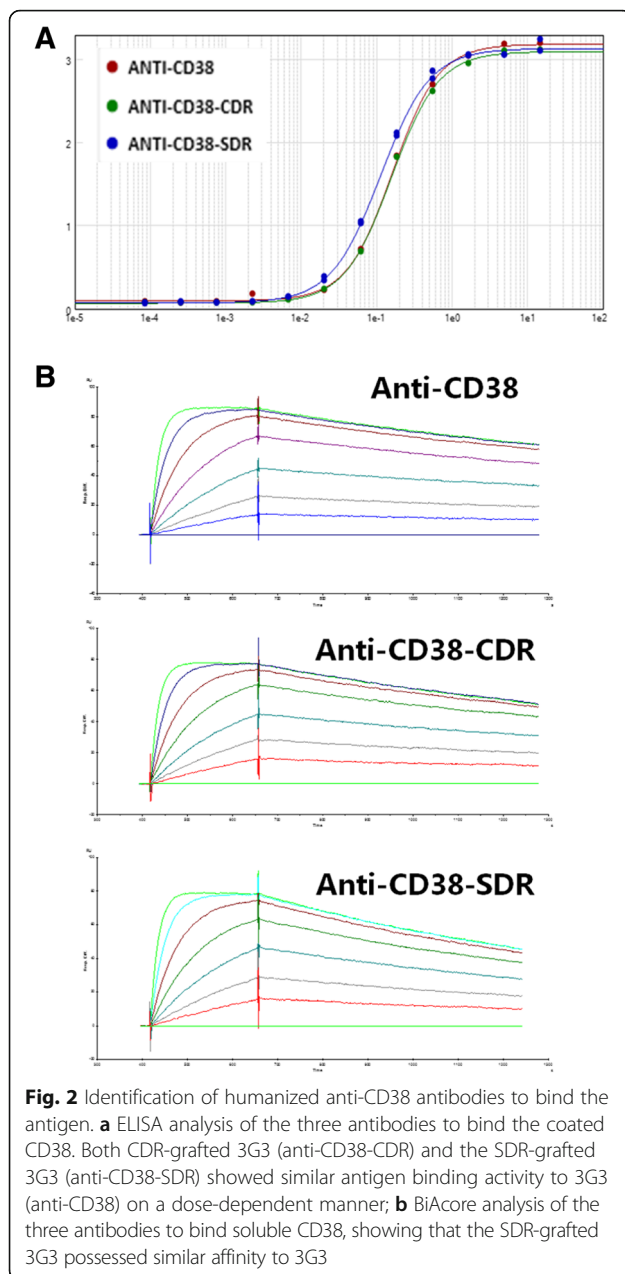
Prior to cell injection, SCID mice were healthy with the body weight of 17~18 g/mouse. Mice were injected subcutaneously with CD38+ Raji cells. After ~7 days, SG003 were divided into 3 groups ( $n = 6$ ) and inoculated *i.v.* with Daratumumab, SG003 or isotype control. Figure 7a showed the light emission of mice from the back side. The two groups of antibody-treated mice carried much smaller lump than the control group; more interestingly, SG003 seemed to inhibit the growth of Raji xenografts similar to Daratumumab. We were pleased to see that 2/6 mice had relapsed tumor in SG003 group (mice number 32170 and 32,223); besides, the survival rate also testified SG003's stronger anti-tumor activity in vivo (G3 group) ---- 3/6 mice survived at the endpoint, which was higher ---- than the control group (G1, all mice were dead) and even the Daratumumab-treated mice (G2, 5/6 mice dead) (Fig. 7b), suggesting SG003 might have better potential in in vivo cancer therapy.

#### Discussion

CD38 is a type 2 transmembrane protein, and its molecular weight (MW) is approximately 45 kDa. CD38 is a single chain protein, however, its functional structure is a dimer or a multimer [23–25]. CD38 can help synthesize the ADP-ribose from NAD to increase the cytoplasmic Ca<sup>2+</sup> concentration. CD38 does not bind to the BCR complex, and it tends to aggregate in discrete membrane lipid micro domains to BCR in CLL cells [21]. CD38 also exert the same membrane distribution for TCR on T lymphocytes and CD16 on NK cells [26, 27]. Besides, CD38 can induce the phosphorylation of the intracellular substrate cascades to trigger the cytokine secretion and/or T lymphocyte proliferation [28].

CD38 is used as a disease marker for leukemia and myeloma and it is considered a negative prognostic marker for CLL. In most of MM patients, CD38 was found positive and several anti-CD38 mAbs have been screened out to enter the clinical trials; in CLL cells, CD38 was also considered to form a complex network delivering survival signals, which made CD38 an attractive target for CLL therapy.

Daratumumab that specifically binds to CD38 was the first therapeutic anti-CD38 drug approved by FDA for patients with MM [10, 12]. Daratumumab was shown to facilitate cell killing in various hematological tumors mainly via CDC, ADCC [7], and/or apoptosis upon



secondary cross-linking [29]. It also induced the cytotoxicity of MM tumor cells in patient via CDC and ADCC to suggest its high anti-tumor activity *in vivo*.

In mouse model with the CD38+ CLL MEC2 cells and patient-derived xenografts (CLL-PDX), Daratumumab improved the overall survival rate of MEC2 mice significantly [22]. Besides, Homing of CLL cells to lymphoid organs is mainly coordinated by the CXCL12/CXCR4 axis. The effect of Daratumumab on CLL cells was demonstrated by inhibiting CXCL12-induced migration *in vitro* and interfering patient-derived CLL cells' homing to spleen in NSG mice *in vivo*. Vaisitti et al. demonstrated CD38 together with CXCR4 controls homing of CLL cells because of CD38-CXCR4 interaction both in CLL primary cells and a xenograft mouse model [30]. Daratumumab also reduced CD49d mediated CLL cell adhesion by reducing MMP9 levels [22]. These unique and substantial effects of Daratumumab supported the possibility of anti-CD38 antibodies in clinical use of CLL patients.

Ghose et al. [31] have demonstrated that Daratumumab impairs multiple myeloma cell adhesion, which leads to an increased sensitivity of multiple myeloma to proteasome inhibition. Daratumumab was also shown to induce CDC in cancer cells from MM patients, similar to alemtuzumab (CD52 mAb), which has been found to kill B cell tumor cells mainly via CDC [32]. Interestingly, Daratumumab was demonstrated efficient to kill patient-derived CLL cells by ADCC *in vitro*, while exhibited negligible CDC in these cells [22], however, the reason why Daratumumab showed limited CDC activity in both primary CLL cells and CLL cell lines kept unknown. Here we screened a novel anti-CD38 antibody 3G3, which possessed enhanced cytotoxicity in B lymphocytes than Daratumumab via ADCC (Fig. 1). Then we humanized it to obtain SG003, a SDR-grafted mAb, whose affinity was similar to 3G3 (Fig. 2 & Table 1). We also noticed the predominant ADCC function triggered by SG003, which was much stronger than Daratumumab (Fig. 6), while its CDC function was too weak to be detected (data not shown).

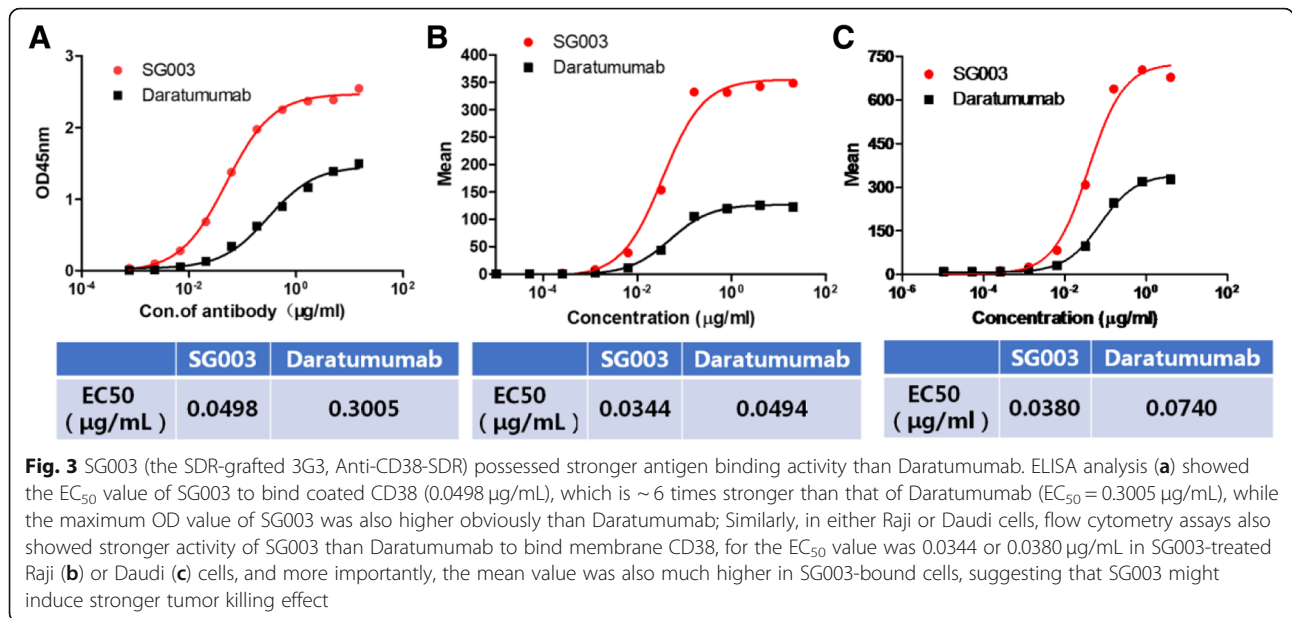
Evidence suggest that the positioning of mAbs after binding to its antigen may be ideal for complement

**Table 1** Affinity constant of anti-CD38 antibodies. The SDR-grafted 3G3 (Anti-CD38-SDR) had similar/a little bit higher  $K_a$  and  $K_d$  value to 3G3, therefore its affinity constant is similar to 3G3

Affinity constant to CD38-ECD-His	$k_a$ ( $10^6$ 1/Ms)	$k_d$ ( $10^{-4}$ 1/s)	$KD$ ( $10^{-10}$ M)	$\chi^2$
Anti-CD38	$2.36 \pm 0.13$	$5.30 \pm 0.08$	$2.25 \pm 0.09$	$0.49 \pm 0.14$
Anti-CD38-CDR	$2.66 \pm 0.01$	$6.36 \pm 0.05$	$2.39 \pm 0.03$	$0.26 \pm 0.06$
Anti-CD38-SDR	$2.86 \pm 0.00$	$9.18 \pm 0.01$	$3.21 \pm 0.01$	$0.22 \pm 0.02$

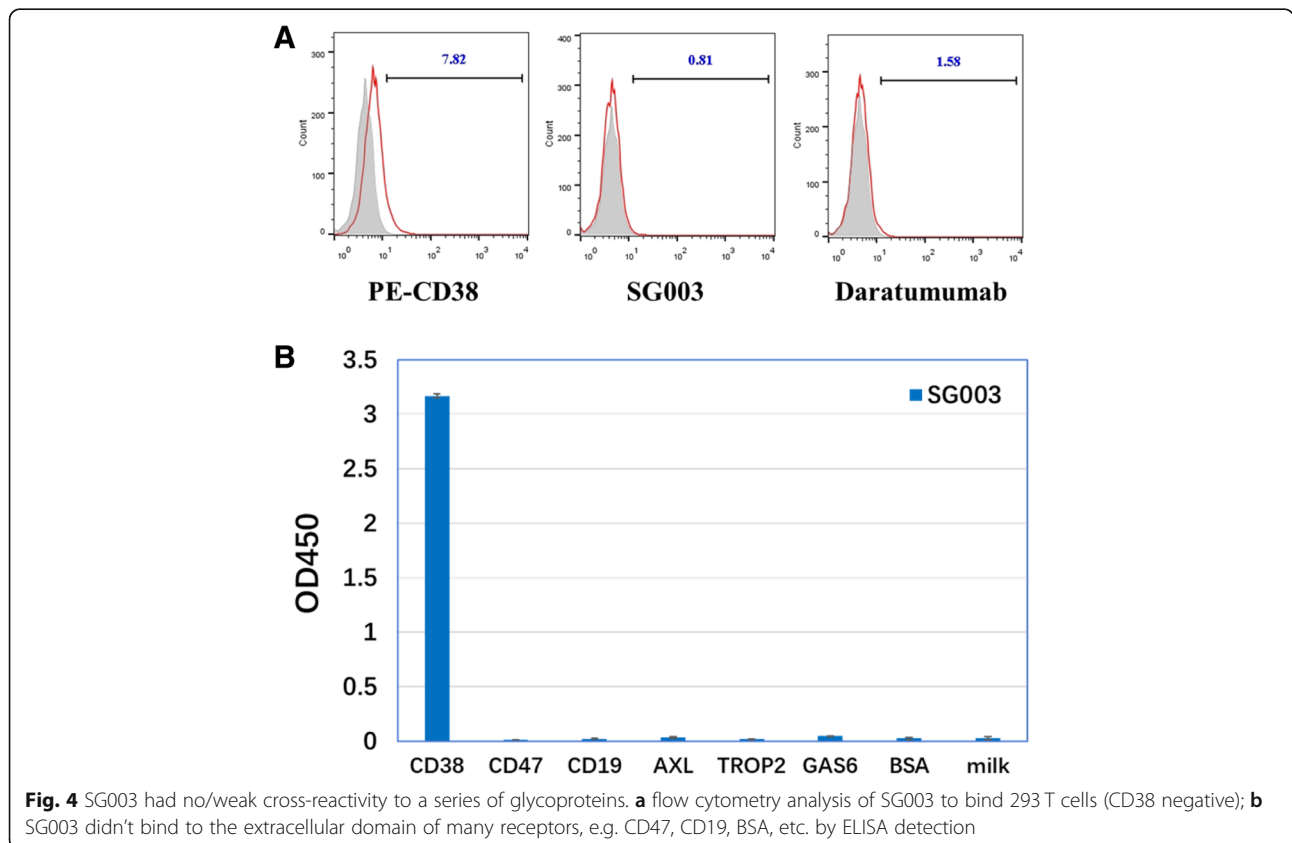
\* The values represent mean  $\pm$  standard error.

<sup>†</sup>The values represent mean  $\pm$  standard error

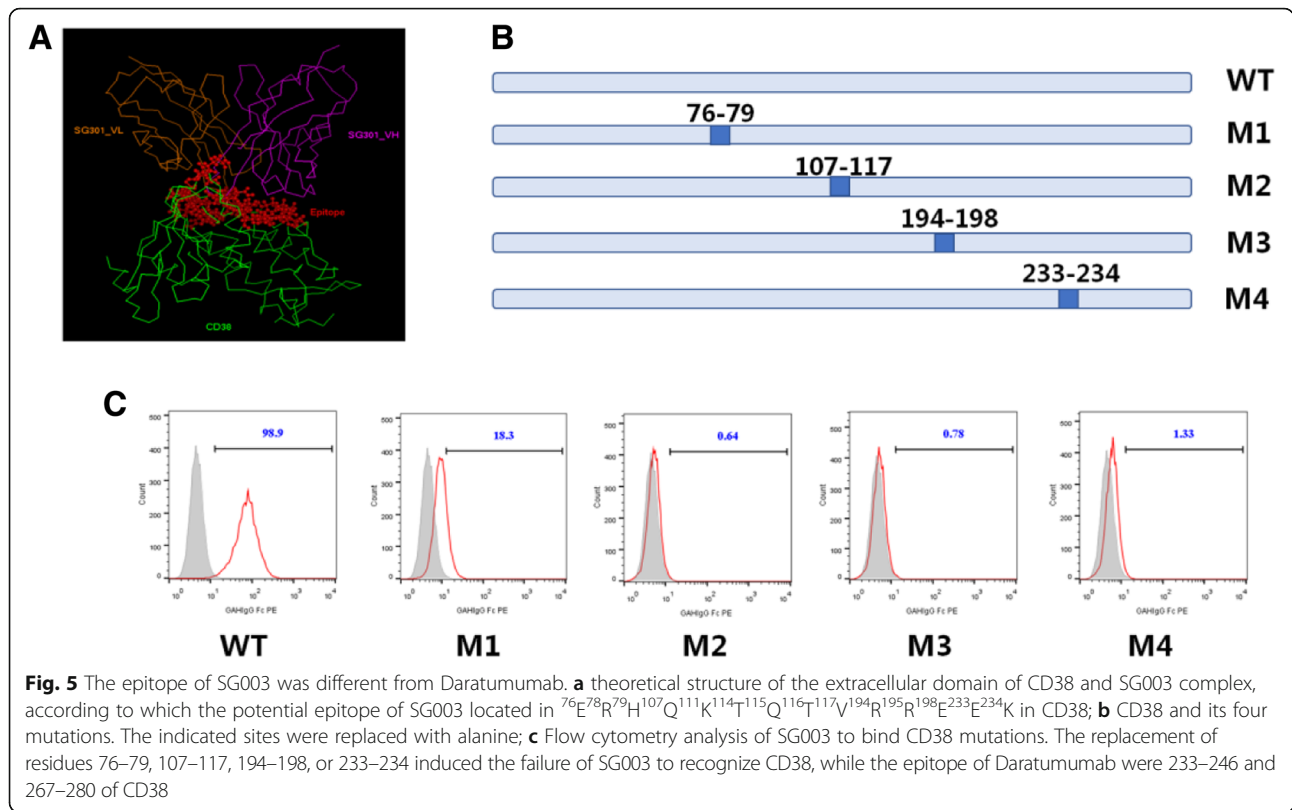


activation [33], and this may also exist in Daratumumab. In fact, induction of CDC was a very specific character of Daratumumab contrasting to other CD38 mAbs. Epitope mapping and site directed mutagenesis assays revealed its unique epitope, which might cluster and

position its Fc region in a fine situation that permitted more optimal activation of complements. Here the affinity of SG003 was stronger than Daratumumab (Fig. 3), and its epitope was distinct (Fig. 5). We assumed that the distinct epitope of SG003 might contribute to its







stronger ADCC but weaker CDC function in B lymphocytes as well as the stronger activity to inhibit the growth of xenografts *in vivo* and improve the survival rate of SCID mice (Fig. 7), although further studies should be done to confirm it.

**Conclusion**

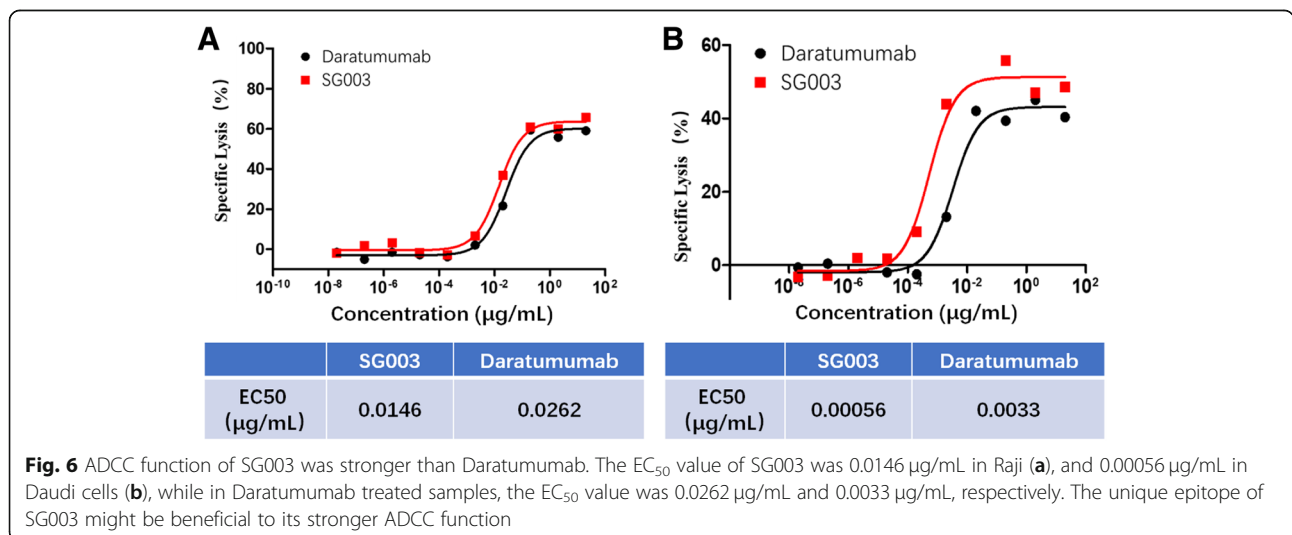
Contrasting to the first therapeutic anti-CD38 antibody Daratumumab, 3G3 possessed higher affinity, unique

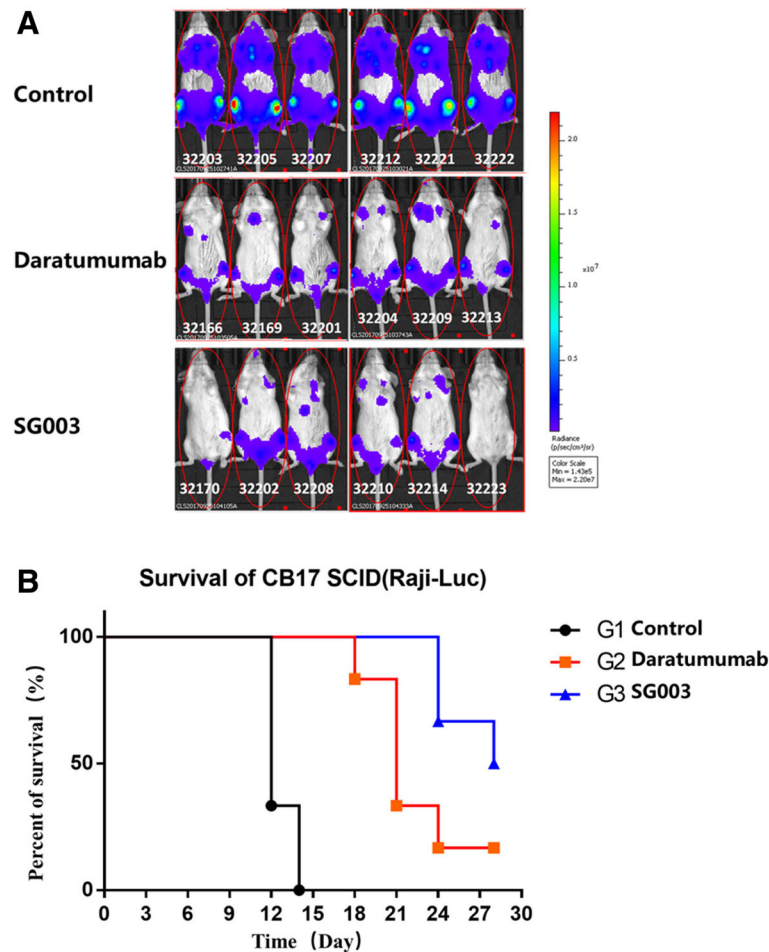
epitope, stronger ADCC function, as well as better *in vivo* curative effect. 3G3 seemed to be a good candidate with the potential to offer better therapeutic efficacy, especially in CD38+ leukemia patients.

**Methods**

**Reagents**

CD38 protein was purchased from Sino biological (Cat. No: 10818-H08H); Darzalex (Daratumumab) was purchased





**Fig. 7** SG003 inhibits outgrowth of CD38-expressing Raji xenografts in SCID mice model. **a** Light emission of mice from the back side. SCID mice were inoculated with luciferase-expressing Raji cells, and 100 µg/mouse SG003 was injected to inhibit the tumor growth. Mice infused with Daratumumab or human IgG (100 µg/mouse) were set as positive or negative controls. **b** Survival Rate of Raji xenograft mice (n = 6). The experiments were done twice SG003 had satisfactory anti-tumor activity in vivo. 3 mice in SG003 group were alive at the endpoint, which was obviously higher than control group (G1, all dead), and even the Daratumumab-treated group (G2, 1 mouse alive)

from Janssen Biotech; Human IgG Isotype control (Cat. No.: 02–7102) and HRP conjugated Goat anti-Human IgG (H + L) Secondary Antibody (Cat. No.: # A18805, dilution for ELISA: 1:2000) FROM Invitrogen; PE conjugated Goat anti-human polyclonal antibody (PE\_GAH) were from eBiosciences (Cat. No.: 12–4998-82, Dilution for flow cytometry: 1:50); Dulbecco’s modified Eagle medium (DMEM) (Cat. No. 11965–092), RPMI 1640 (Cat. No. 11875–093), and fetal bovine serum (FBS) (Cat. No. 10438–034) were purchased from Thermo Fisher; DELFIA EuTDA Cytotoxicity Reagents was purchased from Perkin Elmer (Cat. No. AD0116); All other chemicals were obtained from commercial source of analytical grade.

**Cell lines**

Human embryonic kidney epithelial cells 293 T (ATCC® CRL-3216™), B Lymphocyte Raji (ATCC® CCL-86™) and B Lymphoblast Daudi (ATCC® CCL-213™) were obtained

from American Type Culture Collection (ATCC); Raji-luc lymphoma cells were generated as described previously to let Raji cells express luciferase [34, 35]; Human peripheral blood mononuclear cells (PBMC) were extracted from the whole blood using Ficoll-Paque Plus (GE Healthcare, Cat. No. 17–1440-02); 293 T were cultured in DMEM, while Raji and Daudi were cultured in RPMI-1640 (Gibco, Cat. No. 11875–093). Media was supplemented with 10% heat-inactivated FBS (Gibco, Cat. No. 26010–074) and 100 units/mL penicillin & streptomycin (Gibco, Cat. No. 15140–122). Cells were tested without mycoplasma contamination (LookOut Mycoplasma PCR detection kit, Cat. No. MP0035, Sigma-Aldrich, MO, USA) and cultured at 37 °C in 5% CO2.

**Antibody generation**

Anti-CD38 Antibody 3G3 were generated by immunization of mice with recombinant CD38 protein. After isolation of

mouse splenocytes and fusion, the hybridomas were tested for binding to CD38 by indirect ELISA, from which 3G3 was selected based on its high affinity and then its unique cytotoxicity ability of Raji cells. In all experiments, human IgG polyclonal antibody (pAb) was used as negative control.

According to the theoretical analysis, simulation and design, the VH/VL genes of CDR- or SDR- grafted 3G3 antibodies were obtained, then the humanized antibodies were prepared using our Flp-FRT mammalian system [36].

#### ELISA

ELISA plates were coated with antigen (e.g. 2 µg/mL CD38 protein) at 4 °C overnight and then blocked with 1% BSA in PBS containing 0.05% Tween-20 for an hour at 37 °C. Diluted antibodies were added as first antibody and incubated for 2 hours at 37 °C. After washing, horseradish peroxidase conjugated goat anti-human IgG was added for an hour's incubation at room temperature. Binding signals were visualized using TMB substrate and the light absorbance was measured with an ELISA reader at 450 nm.

#### Cytotoxicity assay (ADCC)

ADCC activities of the antibodies were measured by DELFIA EuTDA Cytotoxicity Reagents (Perkin Elmer) according to the manufacturer's instructions. Briefly, the tumor cells (target cells) were incubated with fluorescence-enhancing ligand, then incubated with the anti-CD38 antibodies for 1 h at 37 °C, followed by the addition of the effector cells, human peripheral blood mononuclear cells (PBMC) (effector:target = 50:1). After an additional incubation for 4 h at 37 °C, the fluorescence of the supernatant was measured in a time-resolved fluorometer. Maximum release was determined by cell lysis in 0.2% Triton X-100. Percentage of lysis in each mAb-treated sample was calculated according to the following formula:

$$\% \text{Inhibition} = \frac{[\text{experimental release} - \text{minimum release}]}{[\text{maximum release} - \text{minimum release}]} \times 100.$$

#### Computer-aided humanization and epitope prediction

The 3-D structure of CD38 or 3G3 were constructed by computer-guided homology modeling method using InsightII version 2005 (Molecular Simulations, San Diego, CA). According to the potential epitope of CD38, the 3-D complex structure of CD38 and 3G3 was modeled with molecular docking method and optimized using the modules Discover and CHARMM in InsightII. The

non-bonded cutoff was 10 Å, non-bonded parameters and atomic charges were taken as defaults. A distance dependent dielectric constant was used as in vacuo calculations. The model was minimized using steepest descent (2000 steps) and conjugate gradient (5000 steps) methods, respectively.

Based on the complex structure, the six CDRs of 3G3 were kept while the FR regions were replaced to human sites, which offered CDR-grafted 3G3; meanwhile, the core sites of 3G3-CDRs were kept, and the FR regions as well as both ends of six CDRs were replaced to human residues, giving birth to SDR-grafted 3G3.

According to the theoretical structure of extracellular regions of human CD38 (CD38\_ECD) and antibody (e.g. 3G3) complex, the potential epitopes were predicted, by which a series of CD38 mutants were designed.

#### BIAcore

The antigen, commercial CD38 recombinant protein, was set as fluid phase. The parent antibody 3G3 was set as positive control, and the solvent (sample buffer) was set as negative control. The background was deducted according to the V-baseline in order to obtain the kinetic curves and calculate the dissociation constant ( $K_D$  value).

#### Flow cytometry

Raji or Daudi cells were washed and then incubated with serial dilutions of mAbs or isotype IgG control. After washing and incubation with PE\_GAH, samples were determined using BD FACS Calibur and the fluorescence density was analyzed with BD CellQuest Pro software. Experiments were performed on ice.

In epitope identification assay, using alanine replacement, a series of CD38 mutants were expressed on 293 T cell surface. Then cells were incubated with SG003 and then PE\_GAH for detection.

#### In vivo assays in mice

Eighteen female, 8- to 10-wk-old C.B-17 SCID mice (C.B-17/IcrCrl-scid-BR) were purchased from Beijing Vital River Laboratory Animal Technology Co., Ltd. and housed in filter-top cages (3 mice per cage) in SPF-level Facility fed with Sterilized food and water. During the animal assays, we followed the ARRIVE guidelines for the use of mice (<https://www.nc3rs.org.uk/arrive-guidelines>). We noticed animal ethics during the research with 3R principles (Replacement, Reduction and Refinement), and use or treatment of mice were in strict agreement with the guidelines for the care and use of research animals and approved by the Animal Ethics Committee of Beijing Institute of Pharmacology and Toxicology (Ethic permission number: PTAE2017010). Mice were checked at least three times a week for signs of discomfort and for general appearance. After the study, the mice were



sacrificed using anesthesia by *i.p.* injection of 80 mg/kg ketamine, 20 mg/kg xylazine and 0.6 mg/kg atropine, and then the cervical dislocation method, and we used deep-freezing to confirm the death.

For the xenograft model,  $2.5 \times 10^6$  Raji-luc cells per mouse were injected *s.c.* In a week, mice were randomly divided into three groups, administered *i.v.* with 5 mg/kg of anti-CD38 mAb or human IgG isotype control, and observed twice a week for 4 weeks after administration of antibody ( $n = 6$ ). On day 28, mice were injected *i.p.* with synthetic D-luciferin (acid form) and luminescence was measured. For imaging, mice were anesthetized by *i.p.* injection of 80 mg/kg ketamine, 20 mg/kg xylazine, and 0.6 mg/kg atropine mixture before D-luciferin was given in 2.5 mg/200  $\mu$ l 10 mM Tris base/mouse. Imaging of each mouse was done using a VersArray 1300B device detector (Roper Scientific, Vianen, Netherlands) and photons emitted from the luciferase system were counted after an exposure period of 5 min. The experiments were done twice. MetaVue software (purchased from Molecular Devices) was used for data collection and analysis.

### Statistical analysis

All experiments were done at least two times. Data are expressed as mean  $\pm$  SD. Pair wise differences between several groups were compared. Statistical analysis was performed by Student test or by repeated measures one-way ANOVA. Treatments were taken as statistically significant when *P*-values of less than 0.05.

### Abbreviations

ADCC: Antibody-dependent cell cytotoxicity; ATCC: American Type Culture Collection; BCR: B cell receptor; BM: Bone marrow; CDC: Complement-dependent cytotoxicity; DMEM: Dulbecco's modified Eagle medium; DOR: Median duration of response; FBS: Fetal bovine serum; mAb: Monoclonal antibody; MM: Multiple myeloma; MW: Molecular weight; ORR: Overall response rate; OS: Overall survival; pAb: Polyclonal antibody; PBMC: Peripheral blood mononuclear cells; PFS: Progression-free survival

### Acknowledgements

We thank Prof. Jiannan Feng for giving valuable suggestion in antibody modeling and humanization.

### Funding

This work was supported by grants from National Sciences Fund (No. 31370938, No. 81272528). The Fund (No. 31370938) helped design the study and collected the data for analysis. The Fund (No. 81272528) offered experiment material and was helpful in writing the manuscript.

### Availability of data and materials

The datasets used and/or analyzed during the current study is available from the authors upon a reasonable request.

### Authors' contributions

YT did antigen binding and ADCC assays; QC did the modeling and humanization of antibody, in vivo assays in mice and wrote the manuscript; LM did gene cloning and antibody purification; TL designed experiments and supervised the study, and revise the manuscript. All authors have read and approved the manuscript.

### Ethics approval and consent to participate

The use or treatment of mice were in strict agreement with the guidelines for the care and use of research animals and approved by the Animal Ethics Committee of Beijing Institute of Pharmacology and Toxicology. Consent to participate: Not Applicable.

### Consent for publication

Not Applicable.

### Competing interests

The authors declare that they have no competing interests.

### Publisher's Note

Springer Nature remains neutral with regard to jurisdictional claims in published maps and institutional affiliations.

### Author details

<sup>1</sup>Department of Oncology, the First Affiliated Hospital of Nanjing Medical University, Nanjing 210029, China. <sup>2</sup>State key Laboratory of Toxicology and Medical Countermeasures, Beijing Institute of Pharmacology and Toxicology, 27 Taiping Road, Beijing 100850, China. <sup>3</sup>Sumgen Biotech co., Ltd., Hangzhou 310000, China. <sup>4</sup>Department of Radiation Oncology, the Second Affiliated Hospital of Nanjing Medical University, Nanjing 210011, China.

Received: 15 November 2018 Accepted: 7 May 2019

Published online: 22 May 2019

### References

- Malavasi F, Deaglio S, Funaro A, Ferrero E, Horenstein AL, Ortolan E, Vaisitti T, Aydin S. Evolution and function of the ADP ribosyl cyclase/CD38 gene family in physiology and pathology. *Physiol Rev.* 2008;88(3):841–86.
- Chen J, Feilotter HE, Pare GC, Zhang X, Pemberton JG, Garady C, Lai D, Yang X, Tron VA. MicroRNA-193b represses cell proliferation and regulates cyclin D1 in melanoma. *Am J Pathol.* 2010;176(5):2520–9.
- Lin P, Owens R, Tricot G, Wilson CS. Flow cytometric immunophenotypic analysis of 306 cases of multiple myeloma. *Am J Clin Pathol.* 2004;121(4):482–8.
- Magarotto V, Salvini M, Bonello F, Bringhen S, Palumbo A. Strategy for the treatment of multiple myeloma utilizing monoclonal antibodies: a new era begins. *Leuk lymphoma.* 2016;57(3):537–56.
- Sondergeld P, van de Donk NW, Richardson PG, Plesner T. Monoclonal antibodies in myeloma. *Clin Adv Hematol Oncol.* 2015;13(9):599–609.
- Jiang H, Acharya C, An G, Zhong M, Feng X, Wang L, Dasilva N, Song Z, Yang G, Adrian F, Qiu L, Richardson P, Munshi NC, Tai YT, Anderson KC. SAR650984 directly induces multiple myeloma cell death via lysosomal-associated and apoptotic pathways, which is further enhanced by pomalidomide. *Leukemia.* 2016;30(2):399–408.
- de Weers M, Tai YT, van der Veer MS, Bakker JM, Vink T, Jacobs DC, Oomen LA, Peipp M, Valerius T, Slootstra JW, Mutis T, Bleeker WK, Anderson KC, Lokhorst HM, van de Winkel JG, Parren PW. Daratumumab, a novel therapeutic human CD38 monoclonal antibody, induces killing of multiple myeloma and other hematological tumors. *J Immunol.* 2011;186(3):1840–8.
- Nijhof IS, Groen RW, Lokhorst HM, van Kessel B, Bloem AC, van Velzen J, de Jong-Korlaar R, Yuan H, Noort WA, Klein SK, Martens AC, Doshi P, Sasser K, Mutis T, van de Donk NW. Upregulation of CD38 expression on multiple myeloma cells by all-trans retinoic acid improves the efficacy of daratumumab. *Leukemia.* 2015;29(10):2039–49.
- Schutze K, Petry K, Hambach J, Schuster N, Fumey W, Schriewer L, Rockendorf J, Menzel S, Albrecht B, Haag F, Stortelers C, Bannas P, Koch-Nolte F. CD38-specific Biparatopic heavy chain antibodies display potent complement-dependent cytotoxicity against multiple myeloma cells. *Front Immunol.* 2018;9:2553.
- Lokhorst HM, Plesner T, Laubach JP, Nahi H, Gimsing P, Hansson M, Minnema MC, Lassen U, Krejci J, Palumbo A, van de Donk NW, Ahmadi T, Khan I, Uhlir CM, Wang J, Sasser AK, Losic N, Lisby S, Basse L, Brun N, Richardson PG. Targeting CD38 with Daratumumab monotherapy in multiple myeloma. *N Engl J Med.* 2015;373(13):1207–19.
- Nijhof IS, Groen RW, Noort WA, van Kessel B, de Jong-Korlaar R, Bakker J, van Bueren JJ, Parren PW, Lokhorst HM, van de Donk NW, Martens AC, Mutis T. Preclinical evidence for the therapeutic potential of CD38-targeted Immuno-chemotherapy in multiple myeloma patients refractory to Lenalidomide and Bortezomib. *Clin Cancer Res.* 2015;21(12):2802–10.

12. Lonial S, Weiss BM, Usmani SZ, Singhal S, Chari A, Bahlis NJ, Belch A, Krishnan A, Vescio RA, Mateos MV, Mazumder A, Orlowski RZ, Sutherland HJ, Blade J, Scott EC, Oriol A, Berdeja J, Gharibo M, Stevens DA, LeBlanc R, Sebag M, Callander N, Jakubowiak A, White D, de la Rubia J, Richardson PG, Lisby S, Feng H, Uhlir CM, Khan I, Ahmadi T, Voorhees PM. Daratumumab monotherapy in patients with treatment-refractory multiple myeloma (SIRIUS): an open-label, randomised, phase 2 trial. *Lancet*. 2016;387(10027):1551–60.
13. Nijhof IS, Casneuf T, van Velzen J, van Kessel B, Axel AE, Syed K, Groen RW, van Duin M, Sonneveld P, Minnema MC, Zweegman S, Chiu C, Bloem AC, Mutis T, Lokhorst HM, Sasser AK, van de Donk NW. CD38 expression and complement inhibitors affect response and resistance to daratumumab therapy in myeloma. *Blood*. 2016;128(7):959–70.
14. Richardson PG, Siegel DS, Vij R, Hofmeister CC, Baz R, Jagannath S, Chen C, Lonial S, Jakubowiak A, Bahlis N, Song K, Belch A, Raje N, Shustik C, Lentzsch S, Lacy M, Mikhael J, Matous J, Vesole D, Chen M, Zaki MH, Jacques C, Yu Z, Anderson KC. Pomalidomide alone or in combination with low-dose dexamethasone in relapsed and refractory multiple myeloma: a randomized phase 2 study. *Blood*. 2014;123(12):1826–32.
15. Siegel DS, Martin T, Wang M, Vij R, Jakubowiak AJ, Lonial S, Trudel S, Kukreti V, Bahlis N, Alsina M, Chanan-Khan A, Buadi F, Reu FJ, Somlo G, Zonder J, Song K, Stewart AK, Stadtmauer E, Kunkel L, Wear S, Wong AF, Orlowski RZ, Jagannath S. A phase 2 study of single-agent carfilzomib (PX-171-003-A1) in patients with relapsed and refractory multiple myeloma. *Blood*. 2012;120(14):2817–25.
16. McGirt LY, Jia P, Baerenwald DA, Duszynski RJ, Dahlman KB, Zic JA, Zwerger JP, Hucks D, Dave U, Zhao Z, Eischen CM. Whole-genome sequencing reveals oncogenic mutations in mycosis fungoides. *Blood*. 2015;126(4):508–19.
17. Chim CS, Kumar SK, Orlowski RZ, Cook G, Richardson PG, Gertz MA, Giralt S, Mateos MV, Leleu X, Anderson KC. Management of relapsed and refractory multiple myeloma: novel agents, antibodies, immunotherapies and beyond. *Leukemia*. 2018;32(2):252–62.
18. van de Donk N, Richardson PG, Malavasi F. CD38 antibodies in multiple myeloma: back to the future. *Blood*. 2018;131(1):13–29.
19. Deckert J, Wetzel MC, Bartle LM, Skalaetskaya A, Goldmacher VS, Vallee F, Zhou-Liu Q, Ferrari P, Pouzieux S, Lahoute C, Dumontet C, Plesa A, Chiron M, Lejeune P, Chittenden T, Park PU, Blanc V. SAR650984, a novel humanized CD38-targeting antibody, demonstrates potent antitumor activity in models of multiple myeloma and other CD38+ hematologic malignancies. *Clin Cancer Res*. 2014;20(17):4574–83.
20. Chiorazzi N. Implications of new prognostic markers in chronic lymphocytic leukemia. *Hematology Am Soc Hematol Educ Program*. 2012;2012:76–87.
21. Malavasi F, Deaglio S, Damle R, Cutrona G, Ferrarini M, Chiorazzi N. CD38 and chronic lymphocytic leukemia: a decade later. *Blood*. 2011;118(13):3470–8.
22. Matas-Céspedes A, Vidal-Crespo A, Rodriguez V, Villamor N, Delgado J, Gine E, Roca-Ho H, Menendez P, Campo E, Lopez-Guillermo A, Colomer D, Roue G, Wiestner A, Parren PW, Doshi P, van Bueren JL, Perez-Galan P. The human CD38 monoclonal antibody Daratumumab shows antitumor activity and hampers leukemia-microenvironment interactions in chronic lymphocytic leukemia. *Clin Cancer Res*. 2017;23(6):1493–505.
23. Mallone R, Ferrua S, Morra M, Zocchi E, Mehta K, Notarangelo LD, Malavasi F. Characterization of a CD38-like 78-kilodalton soluble protein released from B cell lines derived from patients with X-linked agammaglobulinemia. *J Clin Invest*. 1998;101(12):2821–30.
24. Hara-Yokoyama M, Kukimoto-Niino M, Terasawa K, Harumiya S, Podyma-Inoue KA, Hino N, Sakamoto K, Itoh S, Hashii N, Hiruta Y, Kawasaki N, Mishima-Tsumagari C, Kaitsu Y, Matsumoto T, Wakiyama M, Shirouzu M, Kasama T, Takayanagi H, Utsunomiya-Tate N, Takatsu K, Katada T, Hirabayashi Y, Yokoyama S, Yanagishita M. Tetrameric interaction of the ectoenzyme CD38 on the cell surface enables its catalytic and raft-association activities. *Structure*. 2012;20(9):1585–95.
25. Zhao YJ, Lam CM, Lee HC. The membrane-bound enzyme CD38 exists in two opposing orientations. *Sci Signal*. 2012;5(241):ra67.
26. Liu Q, Krikunov IA, Graeff R, Munshi C, Lee HC, Hao Q. Crystal structure of human CD38 extracellular domain. *Structure*. 2005;13(9):1331–9.
27. van de Donk NW, Moreau P, Plesner T, Palumbo A, Gay F, Laubach JP, Malavasi F, Avet-Loiseau H, Mateos MV, Sonneveld P, Lokhorst HM, Richardson PG. Clinical efficacy and management of monoclonal antibodies targeting CD38 and SLAMF7 in multiple myeloma. *Blood*. 2016;127(6):681–95.
28. Funaro A, Spagnoli GC, Ausiello CM, Alessio M, Roggero S, Delia D, Zaccolo M, Malavasi F. Involvement of the multilineage CD38 molecule in a unique pathway of cell activation and proliferation. *J Immunol*. 1990;145(8):2390–6.
29. Overdijk MB, Jansen JH, Nederend M, Lammerts van Bueren JJ, Groen RW, Parren PW, Leusen JH, Boross P. The therapeutic CD38 monoclonal antibody Daratumumab induces programmed cell death via Fcγ receptor-mediated cross-linking. *J Immunol*. 2016;197(3):807–13.
30. Vaisitti T, Aydin S, Rossi D, Cottino F, Bergui L, D'Arena G, Bonello L, Horenstein AL, Brennan P, Pepper C, Gaidano G, Malavasi F, Deaglio S. CD38 increases CXCL12-mediated signals and homing of chronic lymphocytic leukemia cells. *Leukemia*. 2010;24(5):958–69.
31. Ghose J, Viola D, Terrazas C, Caserta E, Troadec E, Khalife J, Gunes EG, Sanchez J, McDonald T, Marcucci G, Kaur B, Rosenzweig M, Keats J, Rosen S, Krishnan A, Satoskar AR, Hofmeister CC, Pichiorri F. Daratumumab induces CD38 internalization and impairs myeloma cell adhesion. *Oncoimmunology*. 2018;7(10):e1486948.
32. Zent CS, Secreto CR, LaPlant BR, Bone ND, Call TG, Shanafelt TD, Jelinek DF, Tschumper RC, Kay NE. Direct and complement dependent cytotoxicity in CLL cells from patients with high-risk early-intermediate stage chronic lymphocytic leukemia (CLL) treated with alemtuzumab and rituximab. *Leuk Res*. 2008;32(12):1849–56.
33. Pawluczko AW, Beurskens FJ, Beum PV, Lindorfer MA, van de Winkel JG, Parren PW, Taylor RP. Binding of submaximal C1q promotes complement-dependent cytotoxicity (CDC) of B cells opsonized with anti-CD20 mAbs ofatumumab (OFA) or rituximab (RTX): considerably higher levels of CDC are induced by OFA than by RTX. *J Immunol*. 2009;183(1):749–58.
34. Rozemuller H, van der Spek E, Bogers-Boer LH, Zwart MC, Verweij V, Emmelot M, Groen RW, Spaapen R, Bloem AC, Lokhorst HM, Mutis T, Martens AC. A bioluminescence imaging based in vivo model for preclinical testing of novel cellular immunotherapy strategies to improve the graft-versus-myeloma effect. *Haematologica*. 2008;93(7):1049–57.
35. Kuipers J, Vaandrager JW, Weghuis DO, Pearson PL, Scheres J, Lokhorst HM, Clevers H, Bast BJ. Fluorescence in situ hybridization analysis shows the frequent occurrence of 14q32.3 rearrangements with involvement of immunoglobulin switch regions in myeloma cell lines. *Cancer Genet Cytogenet*. 1999;109(2):99–107.
36. Luo L, Wang S, Lang X, Zhou T, Geng J, Li X, Qiao C, Feng J, Shen B, Lv M, Li Y. Selection and characterization of the novel anti-human PD-1 FV78 antibody from a targeted epitope mammalian cell-displayed antibody library. *Cell Mol Immunol*. 2018;15(2):146–57.

**Ready to submit your research? Choose BMC and benefit from:**

- fast, convenient online submission
- thorough peer review by experienced researchers in your field
- rapid publication on acceptance
- support for research data, including large and complex data types
- gold Open Access which fosters wider collaboration and increased citations
- maximum visibility for your research: over 100M website views per year

**At BMC, research is always in progress.**

Learn more [biomedcentral.com/submissions](https://biomedcentral.com/submissions)

