

RESEARCH ARTICLE

Open Access



Favourable long-term survival of patients with esophageal cancer treated with extended transhiatal esophagectomy combined with en bloc lymphadenectomy: results from a retrospective observational cohort study

Dino Kröll^{1,2*}, Yves Michael Borbély², Bastian Dislich³, Tobias Haltmeier², Thomas Malinka¹, Matthias Biebl¹, Rupert Langer³, Daniel Candinas² and Christian Seiler²

Abstract

Background: Although considered complex and challenging, esophagectomy remains the best potentially curable treatment option for resectable esophageal and esophagogastric junction (AEG) carcinomas. The optimal surgical approach and technique as well as the extent of lymphadenectomy, particularly regarding quality of life and short- and long-term outcomes, are still a matter of debate. To lower perioperative morbidity, we combined the advantages of a one-cavity approach with extended lymph node dissection (usually achieved by only a two-cavity approach) and developed a modified single-cavity transhiatal approach for esophagectomy.

Methods: The aim of this study was to evaluate the outcome of an extended transhiatal esophageal resection with radical bilateral mediastinal en bloc lymphadenectomy (eTHE). A prospective database of 166 patients with resectable cancers of the esophagus (including adenocarcinomas of the AEG types I and II) were analyzed. Patients were treated between 2001 and 2017 with eTHE at a tertiary care university center. Relevant patient characteristics and outcome parameters were collected and analyzed. The primary endpoint was 5-year overall survival. Secondary outcomes included short-term morbidity, mortality, radicalness of en bloc resection and oncologic efficacy.

(Continued on next page)

* Correspondence: dino.kroell@charite.de

¹Department of Surgery, Campus Charité Mitte and Campus Virchow-Klinikum, Charité-Universitätsmedizin Berlin, Augustenburger Platz 1, 13353 Berlin, Germany

²Department of Visceral Surgery and Medicine, Inselspital Bern, Bern University Hospital and University of Bern, 3010 Bern, Switzerland

Full list of author information is available at the end of the article



© The Author(s). 2020 **Open Access** This article is licensed under a Creative Commons Attribution 4.0 International License, which permits use, sharing, adaptation, distribution and reproduction in any medium or format, as long as you give appropriate credit to the original author(s) and the source, provide a link to the Creative Commons licence, and indicate if changes were made. The images or other third party material in this article are included in the article's Creative Commons licence, unless indicated otherwise in a credit line to the material. If material is not included in the article's Creative Commons licence and your intended use is not permitted by statutory regulation or exceeds the permitted use, you will need to obtain permission directly from the copyright holder. To view a copy of this licence, visit <http://creativecommons.org/licenses/by/4.0/>. The Creative Commons Public Domain Dedication waiver (<http://creativecommons.org/publicdomain/zero/1.0/>) applies to the data made available in this article, unless otherwise stated in a credit line to the data.

(Continued from previous page)

Results: The overall survival rates at 1, 3 and 5 years were 84, 70, and 61.0%, respectively. The in-hospital mortality rate after eTHE was 1.2%. Complications with a Clavien-Dindo score of III/IV occurred in 31 cases (18.6%). A total of 25 patients (15.1%) had a major pulmonary complication. The median hospital stay was 17 days (interquartile range (IQR) 12). Most patients ($n = 144$; 86.7%) received neoadjuvant treatment. The median number of lymph nodes resected was 25 (IQR 17). The R0 resection rate was 97%.

Conclusion: In patients with esophageal cancer, eTHE without thoracotomy resulted in excellent long-term survival, an above average number of resected lymph nodes and an acceptable postoperative morbidity and mortality.

Keywords: Esophageal cancer, Extended transhiatal esophagectomy, Long-term survival, En bloc lymphadenectomy, Short-term outcome

Background

Esophageal cancer is one of the most common malignant tumors of the digestive system and has an unfavorable prognosis [1]. In recent decades, careful patient selection, multimodal treatment concepts, and modified surgical strategies have led to better outcomes for patients with locally advanced cancers of the esophagus and the gastroesophageal junction (GEJ); nevertheless, further treatment improvements are needed.

Surgery remains the best curative treatment option for resectable esophageal cancer [2]; however, the optimal surgical technique is not yet defined and remains the topic of an ongoing debate with regard to surgical approaches and techniques (e.g., open vs. minimally invasive vs. robotic and hybrid surgery) and the extent of lymphadenectomy and its influence on short- and long-term outcomes.

Minimally invasive esophagectomy approaches (MIE) and hybrid resections are increasingly used in oncologic surgery for esophageal carcinoma, showing advantages regarding postoperative convalescence. However, a real benefit regarding oncologic safety and long-term survival is still lacking [3–5].

Two large meta-analyses comparing transhiatal (single-cavity approach) and transthoracic (two-cavity approach) routes have attempted to address the debate regarding the best surgical approach [6, 7]. Transthoracic esophagectomy (Ivor Lewis) is believed to benefit long-term survival. Due to better tumor exposure and control, the radicalness of resection and the extent of lymphadenectomy seem to favor a transthoracic approach (TTE) as opposed to the transhiatal approach (THE), which is more focused on decreasing postoperative morbidity (i.e., fewer respiratory complications) and mortality by preventing formal thoracic access and avoiding one-lung ventilation [8–10]. However, most previous studies were retrospective and did not include neoadjuvant treatment options. Although experienced groups have developed many different techniques and approaches, an improvement in the disease-free period

or a significant overall survival benefit of these techniques has not yet been demonstrated.

To combine the advantages of TTE and THE, an extended transhiatal esophageal resection through a one-cavity approach including extended transhiatal en bloc-lymphadenectomy (eTHE) and a cervical esophago-gastric anastomosis, but not thoracotomy, was introduced. In this descriptive and exploratory retrospective study, we aimed to evaluate patients who were treated in a tertiary care center regarding the benefits and potential limitations of the eTHE technique.

Methods

Patients undergoing a planned esophageal resection between December 2001 and May 2017 at the Bern University Hospital and University of Bern, Inselspital were reviewed. All patients were consecutively registered in a prospective database, which was then evaluated retrospectively. Patients 18 to 80 years old with resectable esophageal cancer (cT1–3, N0–4, and M0) of the intrathoracic esophagus or GEJ (Siewert type I and Siewert type I-II) treated with eTHE and a cervical anastomosis were eligible for inclusion. Adenocarcinomas, squamous cell carcinomas, and other carcinomas (e.g., mixed adeno-neuroendocrine carcinoma) were included. Patients with benign diseases and those who underwent partial resections of the distal esophagus ($n = 125$) and patients who underwent TTE ($n = 9$) were excluded. The independent cantonal ethics committee approved this study.

Operative approach

eTHE was performed with a small upper midline laparotomy. The lower mediastinal and paraesophageal dissection was accomplished through opening the diaphragmatic hiatus approximately 7 cm anteriorly. Lymphadenectomy of the celiac trunk (including its branches) along the pancreas, splenic region and perigastric tissue was performed. Continuing the en bloc lymphadenectomy towards the mediastinum and neck,

paraesophageal and mediastinal tissue (including pleura, pericardial and paraaortic lymph and fatty tissues) and lymph nodes were removed carefully, avoiding lesions of the thoracic duct via a “transmediastinal shift technique”. To achieve this, a long retractor was used to alternatively elevate/rotate the right and left lungs anteriorly to give free sight and access to the mediastinum and thoracic cavity up to the apex/first rib on both sides (Supp. Figure S2). Rotating the entire mediastinum, anteriorly alternating the lungs on the right and left sides provides an open view and access to all mediastinal structures and paraesophageal tissues, comparable to that achieved with open thoracotomy (Supp. Figure S3) [11]. It was, however, of utmost importance to team up with an experienced anesthesiologist to carefully monitor the blood pressure during this phase of the surgical procedure and to avoid/treat potential iatrogenic hypotension. An additional cardio-respiratory status monitor was placed in the surgeon’s field of view. The aim was to resect an en bloc specimen of the esophagus following the anatomical planes to the mediastinum, comparable to the total mesorectal specimen technique in advanced colorectal surgery. All tissue between the pericardium and the aorta, including the pleura laterally and the tracheal bifurcation, was removed, preferably in one noninjured piece (Supp. Figure S4). The neck was opened through a small left cervical incision, similar to that used for a formal neck dissection, allowing us to perform a lymphadenectomy of levels 3 to 7 while visualizing and sparing the recurrent laryngeal nerve (RLN) and the parathyroid glands [12]. A combined dissection of the remaining short cervical esophagus was performed from the neck and the abdomen. The gastric conduit was dissected via a fundus rotation gastropasty with successive firings of endoscopic linear staplers on the distal lesser curvature of the stomach [13]. The gastric tube was routed through the hiatus into the neck. Then, a high esophagogastric anastomosis was performed in the neck, preferably with an end-to-side circular stapler (25 mm). A nasogastric tube was placed through the anastomosis under direct vision, and a feeding jejunostomy tube was placed at the end of the procedure. Two-Jackson Pratt drain were placed into both pleura cavities. Finally, the diaphragm was reconstructed.

Outcomes

A retrospective chart review was performed using a standardized outcome protocol. Patient demographics, details regarding the surgical procedure, use of neoadjuvant chemoradiotherapy (nCRT), tumor-specific variables and survival outcomes were recorded. A routine pathology work-up was performed as recommended [14]. Tumors were classified according to the World Health Organization classification [15], and staging was

performed according to the UICC/American Joint Committee on Cancer (eighth edition) criteria [16].

The primary outcome of this study was 5 year overall survival. Secondary outcomes included perioperative morbidity, reoperations, postoperative all-cause mortality (in-hospital, 30 days, and 90 days) and oncologic efficacy.

The Clavien-Dindo classification was used for the classification of perioperative complications [17]. Postoperative complications included anastomotic leakage (identified clinically or radiographically), respiratory complications (pneumonia or bronchopneumonia confirmed by a computed tomographic scan of the thorax), cardiovascular complications (defined as persistent arrhythmia requiring medical treatment and myocardial infarction), wound infections and other complications (i.e., recurrent nerve injury). Lack of vocal cord function recovery within 6 months after surgery was defined as permanent laryngeal nerve palsy (diagnosed by laryngeal electromyography). Postoperative mortality was defined as death from any cause. All patients were regularly evaluated at the outpatient department. In the first year, follow-up consisted of evaluations every 3 months and every 6 to 12 months in the second, third, fourth, and fifth year postoperatively. Long-term follow-up data were collected by chart review and, in case of missing data, by contacting the general practitioner or the patient directly.

Statistical analysis

The normality of continuous variable distribution was assessed using histograms, skewness, and the Shapiro–Wilk test. Categorical variables are reported as numbers and percentages, and continuous variables are reported as medians and interquartile ranges (IQRs). Survival was assessed with Kaplan–Meier curves and life table analyses. Analyses were performed using SPSS Statistics version 24 (IBM, Armonk, NY, USA) and STAT Version 16 (StataCorp, College Station, TX, USA).

Results

Patients characteristics

Between December 2001 and May 2017, 166 patients were included in the present study. Baseline demographics and clinical characteristics, including age, sex, American Society of Anesthesiologists (ASA) classification, and comorbidities (e.g., heart disease and pulmonary diseases), are displayed in Table 1. Most patients were male (78.3%), and cT3 was the most frequently observed clinical tumor stage (63.9%). A total of 144 patients underwent nCRT (86.7%). Radiation was performed with mainly 45 Gy ($n = 84$) or 50.5 Gy ($n = 22$). Chemotherapy was 5-Fluoruracil and Cisplatin/

Table 1 Patient characteristics and clinical characteristics

	eTHE (n = 166)
Age (years)	67.0 (13.0)
Gender (male/female) ^a	130/36 (78.3/21.7)
ASA score 2 ^a	53 (31.9)
ASA score 3 ^a	103 (62.0)
ASA score 4 ^a	10 (6.0)
Pulmonary disease ^a	49 (29.5)
Cardiovascular disease ^a	87 (52.4)
Neoadjuvant treatment ^a	144 (86.7)
cT-stage, n (%)	
cT1	14 (8.4)
cT2	44 (26.5)
cT3	106 (63.9)
cT4	2 (1.2)
cN-stage, n (%)	
cNo	38 (22.9)
cN1	97 (58.4)
cN2	30 (18.1)
cN3	1 (0.6)

Values are medians (interquartile ranges) unless indicated otherwise
eTHE extended transhiatal esophageal resection with radical bilateral mediastinal en bloc lymphadenectomy, *BMI* body mass index, *ASA* American Society of Anesthesiologists Physical Status Classification System
^aValues are numbers (percentages)

Carboplatin based with additional Paclitaxel or Doxetaxel. Median follow-up was 29 months (IQR 52).

Morbidity and mortality

There were no intraoperative deaths. The in-hospital mortality rate was 1.2% ($n = 2$), and the 30- and 90-day mortality rates were 1.8 and 4.2%, respectively ($n = 3$). The postoperative morbidity is summarized in Table 2. A total of 25 patients (15.1%) had a major pulmonary complication.

Pathological findings

Adenocarcinoma was the most frequently observed type of tumor ($n = 114$; 68.7%). The remaining cases were squamous cell carcinomas ($n = 46$; 27.7%) and other cancers ($n = 6$; 3.6%). Carcinomas were mainly located in the distal esophagus or the GEJ (82.5%). The median number of resected lymph nodes was 25 (IQR 17). The R0 resection rate with negative margins on final pathologic review was 97% (Table 3). Complete regression of the primary tumor after neoadjuvant therapy corresponding to tumor regression grade Becker 1a was observed in 49 of 144 patients (34%) undergoing multimodal treatment. Eight patients (16.3%) with complete regression of the primary tumor had viable lymph node metastases.

Table 2 Operative data and postoperative adverse outcomes after eTHE

	eTHE (n = 166)
Operating time (min)	380 (88)
Blood loss (ml)	500 (238)
Clavien-Dindo ^a	
I	32 (19.3)
II	60 (36.1)
III	19 (11.4)
IV	12 (7.2)
V	3 (1.8)
Vocal cord paresis/paralysis ^a	
Transient	18 (10.8)
Permanent	1 (0.6)
Anastomotic leak ^a	19 (11.4)
Reoperation overall ^a	9 (5.4)
Revision for leakage ^a	3 (1.8)
SSI ^a	16 (9.6)
Cardiovascular complications ^a	51 (30.7)
Hospital-acquired pneumonia ^a	21 (12.7)
ARDS ^a	4 (2.4)
In-hospital mortality ^a	2 (1.2)
30-day mortality ^a	3 (1.8)
90-day mortality ^a	7 (4.2)
Total hospital LOS	17 (12.0)

Values are medians (interquartile ranges) unless indicated otherwise
eTHE extended transhiatal esophageal resection with radical bilateral mediastinal en bloc lymphadenectomy, *ARDS* acute respiratory distress syndrome, *SSI* surgical site infection, *LOS* length of stay

^a Values are numbers (percentages)

Overall survival

The 1-year survival rate was 84%, the 3-year survival rate was 70%, and the 5-year survival rate was 61%. The overall survival curves taking into account all tumor stages are presented in Fig. 1. Figure 2 shows the Kaplan-Meier survival curves stratified by pathology stage. The best 5-year survival was observed in pathology stage I patients and in patients with a complete response to neoadjuvant treatment (Fig. 3). Supplemental Fig. S1 shows the Kaplan-Meier survival curves stratified by tumor type (adenocarcinoma vs. squamous cell carcinomas).

Discussion

The optimal approach to esophagectomy, regardless of whether an open or minimally invasive (hybrid/robotic) technique is used, is challenging and controversial. Debates regarding postoperative morbidity and long-term oncological outcomes are ongoing.

Table 3 Histological features after eTHE

	eTHE (n = 166)
Tumor localization, n (%)	
Upper third	1 (0.6)
Middle third	28 (16.9)
Distal third	137 (82.5)
AEG Typ I	101 (73.7)
AEG Typ II	29 (21.2)
Tumor entity, n (%)	
Squamous carcinoma, n (%)	46 (27.7)
Adenocarcinoma, n (%)	114 (68.7)
Others	6 (3.6)
(y) pT-Stage ^a	
ypT0	42 (25.3)
(y) pT1	46 (27.7)
(y) pT2	22 (13.3)
(y) pT3	56 (33.7)
N-Stage ^a	
pN0	111 (66.9)
pN1	32 (19.3)
pN2	16 (9.6)
pN3	7 (4.2)
TNM 8-Stage ^a	
I	89 (53.6)
II	19 (11.4)
IIIA	15 (9.0)
IIIB	30 (18.1)
IVA	7 (4.2)
IVB	6 (3.6)
RO resection	161 (97.0)
No. of resected lymph nodes	25 (17.0)
Complete response (Becker 1a) ^a	49 (34.0)

Values are medians (interquartile ranges) unless indicated otherwise
eTHE extended transhiatal esophageal resection with radical bilateral mediastinal en bloc lymphadenectomy

^a Values are numbers (percentages)

This single-institution review of the open eTHE technique for esophageal cancer demonstrates the low perioperative morbidity and mortality of this approach with above-average overall long-term survival.

The transhiatal technique was introduced in the 1970s by Orringer et al., and its efficacy was demonstrated shortly after its introduction [18]. The advantage of the transhiatal technique is the avoidance of a two-cavity approach, omitting thoracotomy. The aim was a) to reduce surgical trauma and minimize pulmonary complications, b) to establish a cervical esophageal anastomosis in a position where a postoperative leak can be treated easily,

and c) to avoid a mediastinal anastomosis with the risk of mediastinitis and sepsis.

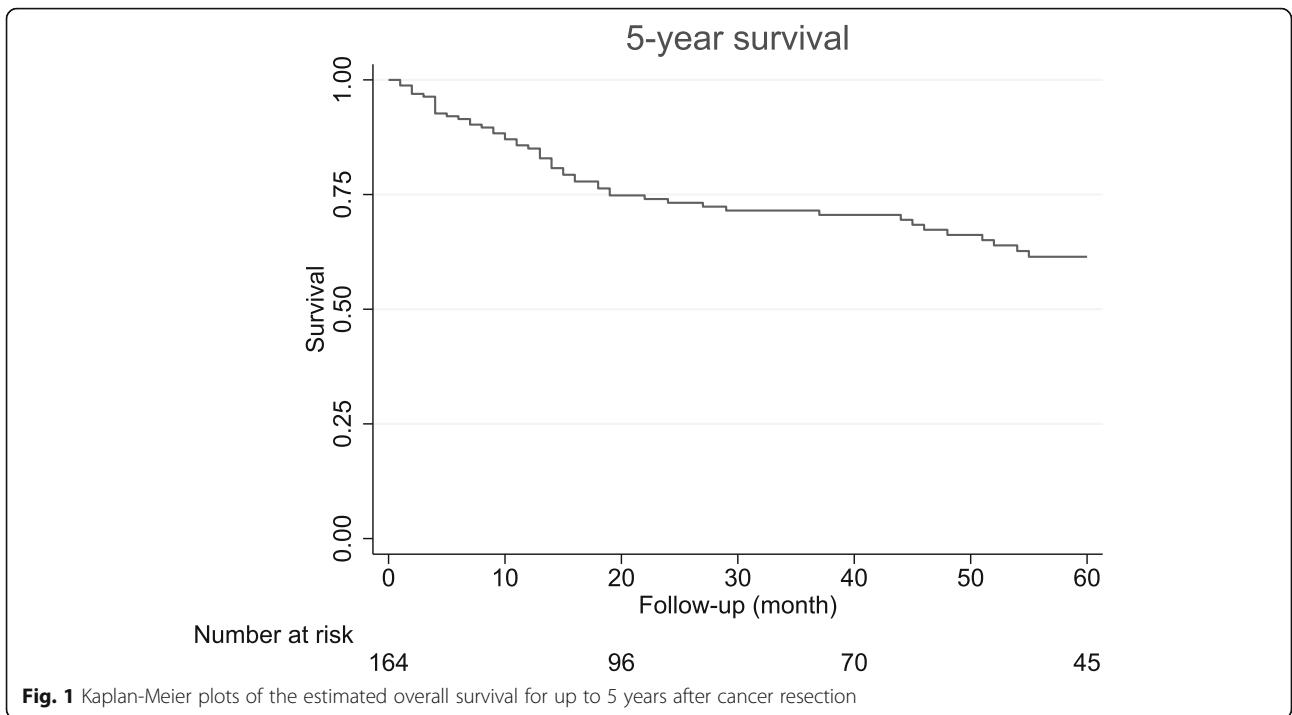
Anastomotic leaks occur in 9–14% of cases, and some small studies have reported an incidence as low as 1.8% [18, 19]. In our study, the leak rate was 11.4%, with 1.8% of cases requiring surgery and drainage, and the incidence of temporary RLN injury was 10.8%. One patient suffered from permanent RLN (0.6%), which is comparable to the frequency reported in a meta-analysis of more than 5000 patients [6]. The pulmonary complication rate was acceptable (12.4%) and comparable to results from the Esophagectomy Complications Consensus Group with pneumonia rates of 11.4% [20].

The overall postoperative 30-day mortality rate was 1.8%, which was similar to that in other MIE studies [21]. The 90-day mortality rate was 4.2%, which was less than half of the rate reported in the National Cancer Database (8.9%) [22].

The conclusion of a subsequent analysis in the HIVEX trial [23] was that TTE was the preferred technique, whereas THE should be considered only in patients with a carcinoma located at the GEJ or in patients with a poor performance status. This conclusion could not be confirmed in the present study. The baseline characteristics of patients in our cohort (e.g., patient population age, gender, comorbidities, neoadjuvant therapy, tumor histology, site, and stage) are comparable to those of other single-center esophagectomy research groups at major academic medical centers and multi-institution studies of esophagectomy [10, 24, 25]. Although the ASA classification might be a subjective parameter, the number of patients with ASA III and ASA IV was significantly higher in our cohort than in other studies [26].

Most importantly, with eTHE, the factors regarding oncologic efficacy, such as lymph node harvest, complete resection rate (RO of 97%), and long-term survival outcomes, were not compromised compared to those of other open or laparoscopic approaches. A recent study comparing open TTE to minimally invasive TTE showed no significant difference in long-term survival for up to 3 years (40.2% (± 6.9) vs. 35.9% ($\pm 6.8\%$)) [25]. Our long-term outcomes are superior with overall survival rates at 3 and 5 years of 70 and 61%, respectively [9, 25–27]. There are probably various reasons for this discrepancy, which will be discussed in the following section.

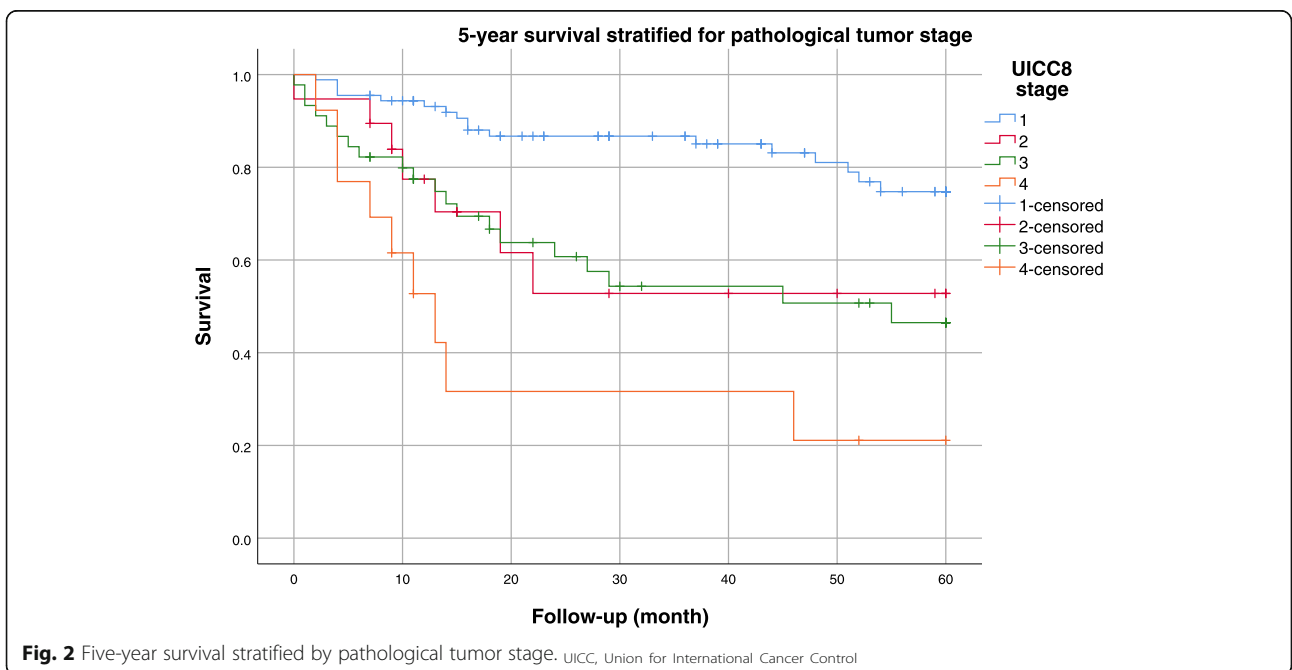
The oncologic appropriateness of the THE has been questioned because critics argue that a thoracic mediastinal lymphadenectomy cannot be performed adequately with the transhiatal approach. A population-based cohort study in the Netherlands demonstrated a survival advantage was achieved with an increasing number of removed lymph nodes (HR 0.84; 0.78–0.90 per 10 more lymph nodes removed). In the transthoracic resection approach, a median of 19 (range 14–25) lymph nodes

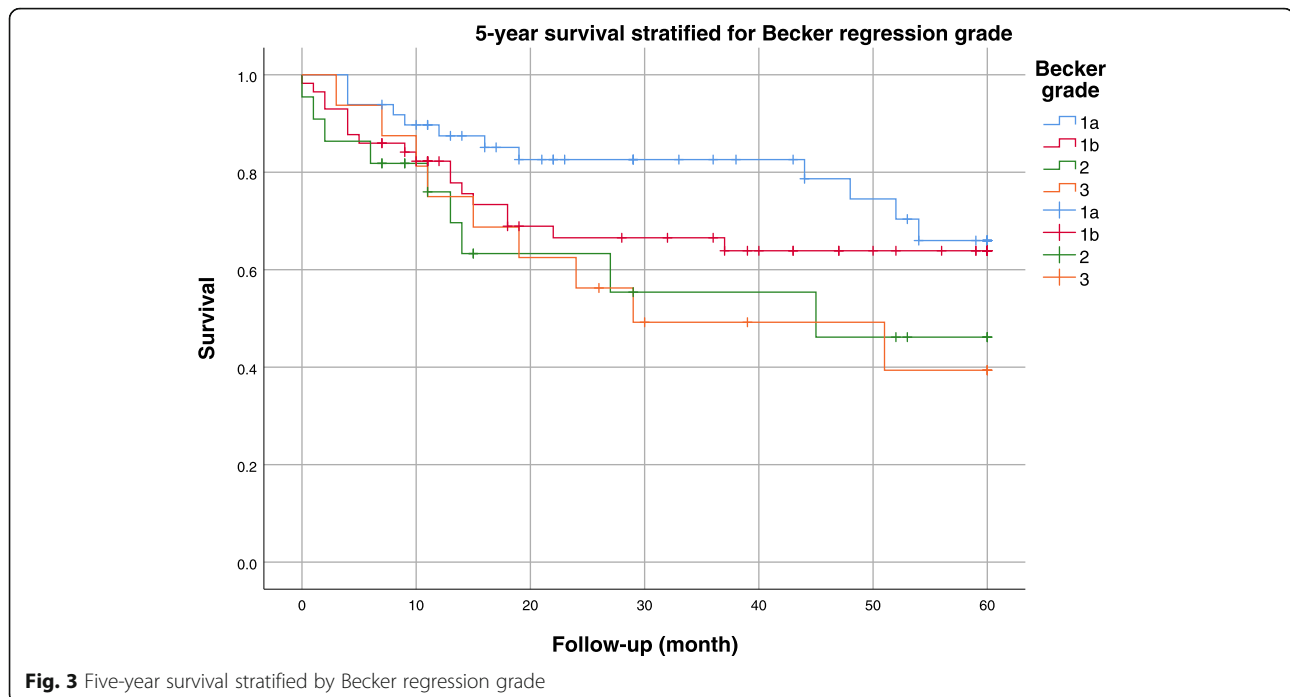


was removed, whereas considerably fewer lymph nodes were removed during transhiatal resection (median 12, range 8–17). The median overall number of lymph nodes resected in our study cohort, including patients who underwent nCRT (86.7%), was 25, which is higher than the average number reported [27] and disproves the statement that a transhiatal approach allows lymph

node dissection to only a limited extent. Peyre et al. even suggested that the optimal threshold for this survival benefit was the removal of at least 23 nodes, and the surgical procedure to achieve this number with a high likelihood was en bloc resection [28].

By opening the diaphragm anteriorly and thus having full visibility of all essential structures in the





mediastinum, the advantages of TTE (radicalness) and THE (low morbidity, one-cavity approach and no need for one-lung ventilation) were combined by the eTHE.

A complete en bloc total mesorectal excision, the emerged standard of care in colorectal surgery, has been defined as the “complete removal of the lymph node-bearing mesorectum along with its intact enveloping fascia” [29]. The same authors have also shown that an incomplete total mesorectal excision is associated with an increased risk of recurrence and a decreased overall survival [30]. Preparation along embryonic layers of the upper gastrointestinal tract is also attracting increasing attention among oncologists, although its scientific basis and superiority have not yet been proven. Following the principles of total mesorectal resection, Cuesta et al. described the “meso-esophagus” for the first time [31]. This principle of respecting the planes surrounding the specimen being transferred to esophageal cancer surgery might be crucial and may have contributed to the excellent long-term results in our eTHE series with en bloc resection and high numbers of resected lymph nodes. The use of long laparoscopic instruments was precious and enabled a save and radical dissection and resection in the mid and upper mediastinum along with the landmarks also for tumours in the middle third of the esophagus. However, there are certain limitations for tumours (bulky tumours, metastatic lymph nodes) in the middle third for the eTHE technique, and a classic open IVOR Lewis approach is also a good option. However, the number of carcinomas in the upper third ($n = 1$, 0.6%) of the esophagus was low in our study. High cervical

esophagus carcinoma, non-responding to radiochemotherapy were sporadic and could be treated with total laryngo-esophagectomy, but no patient underwent such a procedure during the period. We usually performed a 2-field lymphadenectomy up to the level of the vena azygos, but in single cases, lymphadenectomy of the supraaortal lymph nodes via deep cervical access is also possible.

The eTHE technique in our study was pursued in order to reduce the pulmonary complication rate of an open transthoracic esophageal resection by avoiding thoracotomy and single lung ventilation. Open transthoracic esophagectomy is burdened by a postoperative pneumonia rate of 12–55% even in recent randomized trials [25, 32, 33]. Besides the surgical trauma of the resection itself, the surgical access trauma seems crucial for the pulmonary function, as all randomized trials comparing open and minimally invasive esophagectomy display a substantial reduction of the pulmonary complication rate in the minimally invasive cohort. Very interestingly, this holds for all types of minimally invasive access, i.e., a combination of intrathoracic or cervical anastomoses like in the TIME trial [25], fully robotic access like in the Dutch ROBOT trial published by van der Sluis et al. [32], and even for the hybrid access as published by French FREGAT group in the MIRO trial [33]. Comparing the results of our study to the outcome of the MIRO trial, short-term results were comparable about rates of major postoperative complications according to Clavien-Dindo classification. In our series, postoperative pneumonia and ARDS rate was 12.7 and 2.4%,

respectively, as compared to 12.8 and 7.8%, respectively, in the hybrid-procedure group of the MIRO trial [33]. Both results compare at least similar to the 28% pneumonia rate of the ROBOT trial [32] and the 12% pneumonia rate of the TIME trial [25]. Therefore, the inherent pulmonary complication rate of an esophageal resection seems to be significantly aggravated by the destruction of the primary and auxiliary respiratory musculature at the chest and abdominal level through an open two-cavity Ivor-Lewis resection. Even avoiding one of these resections by using either a minimally invasive approach or – in our case – a transhiatal access, prevents the body from the “double hit” of the open esophagectomy and reduces postoperative pulmonary failure.

Our data, together with the studies mentioned above, seem to indicate that in the setting of esophagectomy, firstly, it seems irrelevant which side of the diaphragm remains without a long incision. Secondly, the surgical trauma and postoperative morbidity of the removal of the esophagus itself seems to transfer a “baseline” morbidity, which overlays the presumed additional benefit of a total minimally invasive procedure, resulting in favorable postoperative complication rates in both our and the MIRO hybrid cohort compared to the Dutch ROBOT and the TIME total minimally invasive patient cohort. In conclusion, the presented modified eTHE technique resulted in limited surgical trauma avoiding thoracotomy with consecutive pulmonary morbidity and without jeopardizing the radicality of the procedure since extensive lymphadenectomy was still feasible.

In the current era of MIE, the advantage of an open eTHE with a small supraumbilical incision may become more significant if long-term oncological outcomes of MIE are similar to those of open techniques. Furthermore, robotic and mediastinoscope assisted-transhiatal esophagectomy has found its place among minimally invasive techniques and is becoming more popular [34, 35]. Mori et al. developed a new robotic technique, “nontransthoracic esophagectomy”, with promising results. The authors described the performance of an improved transhiatal nodal dissection without the disadvantages of a thoracic approach. While this technique potentially represents an interesting alternative to current surgical procedures, it needs to be further evaluated, even for advanced stages of cancer.

Beyond the selection of the surgical technique, the implementation of multimodal therapy, the extent of surgical resection, the experience of the surgeon, and the operative volume as well as improvements in critical care management in the hospital may also play important roles in both short-term and long-term efficacy and outcomes [18, 36, 37].

The limitations of this study are those commonly associated with retrospective studies. There following

confounding factors were present: differences in patient characteristics, increasing surgical experience, expertise in postoperative management and critical care and evolution over this long study period. Other limitations of the present study are the relatively small number of patients analyzed and the single-center approach.

Conclusions

In conclusion, this single-center cohort study demonstrates that extended transhiatal esophageal resection without thoracotomy is associated with low peri- and postoperative morbidity and mortality. With eTHE, radical resection including extensive mediastinal lymphadenectomy is feasible, and this oncologically sound procedure resulted in above-average long-term survival rates compared to those achieved with other techniques described in the literature.

Supplementary information

Supplementary information accompanies this paper at <https://doi.org/10.1186/s12893-020-00855-z>.

Additional file 1: Supp. Fig. S1. Five-year survival stratified by tumor type.

Additional file 2: Supp. Fig. S2. En bloc resection of the esophagus and periesophageal tissue, including all tissue between the aorta and pericardium (and the pleura, bilaterally).

Additional file 3: Supp. Fig. S3. View of pulmonary arteries completely cleared from periesophageal tissue by elevating the pulmonary hilus anteriorly to gain access to the hilar structures, esophagus, and left lung.

Additional file 4: Supp. Fig. S4. View of the tracheal bifurcation/aortopulmonary window.

Abbreviations

AEG: Esophagogastric junction; ASA: American Society of Anesthesiologists; eTHE: Extended Transhiatal esophageal resection with radical bilateral mediastinal en bloc lymphadenectomy; GEJ: Gastroesophageal junction; IQR: Interquartile range; MIE: Minimally invasive esophagectomy approach; nCRT: Neoadjuvant chemoradiotherapy; RLN: Recurrent laryngeal nerve; THE: Transhiatal approach; TTE: Transthoracic approach; UICC: Union internationale contre le cancer

Acknowledgements

Not applicable.

Authors' contributions

Study design: DK, YMB, TM, MB, RL, DC, CS. Data acquisition: BD, RL, CS. Data analysis and interpretation: DK, YMB, TH, BD, TM, MB, RL, CS. Manuscript writing, review and final approval: all authors.

Funding

Open access funding provided by Projekt DEAL.

Availability of data and materials

The datasets generated and analyzed during the current study are not publicly available as the data also forms part of an ongoing study but are available from the corresponding author on reasonable request.

Ethics approval and consent to participate

Approval by the local Ethics Committee of Bern was obtained (2020–01365). Patient's consent and consent for publication were not required for this retrospective study.

Consent for publication

Not applicable.

Competing interests

The authors declare that they have no competing interests.

Author details

¹Department of Surgery, Campus Charité Mitte and Campus Virchow-Klinikum, Charité-Universitätsmedizin Berlin, Augustenburger Platz 1, 13353 Berlin, Germany. ²Department of Visceral Surgery and Medicine, Inselspital Bern, Bern University Hospital and University of Bern, 3010 Bern, Switzerland. ³Institute of Pathology, Department of Clinical Pathology, Inselspital Bern, Bern University Hospital and University of Bern, 3010 Bern, Switzerland.

Received: 20 March 2020 Accepted: 26 August 2020

Published online: 11 September 2020

References

- Torre LA, Bray F, Siegel RL, Ferlay J, Lortet-Tieulent J, Jemal A. Global cancer statistics, 2012. *CA Cancer J Clin*. 2015;65(2):87–108 PubMed PMID: 25651787.
- Stahl M, Budach W, Meyer HJ, Cervantes A, Group EGW. Esophageal cancer: clinical practice guidelines for diagnosis, treatment and follow-up. *Ann Oncol*. 2010;21(Suppl 5):v46–9 PubMed PMID: 20555101.
- Lv L, Hu W, Ren Y, Wei X. Minimally invasive esophagectomy versus open esophagectomy for esophageal cancer: a meta-analysis. *Onco Targets Ther*. 2016;9:6751–62 PubMed PMID: 27826201. Pubmed Central PMCID: PMC5096744.
- Nagpal K, Ahmed K, Vats A, Yakoub D, James D, Ashrafian H, et al. Is minimally invasive surgery beneficial in the management of esophageal cancer? A Meta-Analy *Surg Endosc*. 2010;24(7):1621–9 PubMed PMID: 20108155.
- Biere SS, van Berge Henegouwen MI, Maas KW, Bonavina L, Rosman C, Garcia JR, et al. Minimally invasive versus open oesophagectomy for patients with oesophageal cancer: a multicentre, open-label, randomised controlled trial. *Lancet*. 2012;379(9829):1887–92 PubMed PMID: 22552194.
- Rindani R, Martin CJ, Cox MR. Transhiatal versus Ivor-Lewis oesophagectomy: is there a difference? *Aust N Z J Surg*. 1999;69(3):187–94 PubMed PMID: 10075357.
- Hulscher JB, Tijssen JG, Obertop H, van Lanschot JJ. Transthoracic versus transhiatal resection for carcinoma of the esophagus: a meta-analysis. *Ann Thorac Surg*. 2001;72(1):306–13 PubMed PMID: 11465217.
- Orringer MB. Transhiatal esophagectomy without thoracotomy for carcinoma of the thoracic esophagus. *Ann Surg*. 1984;200(3):282–8 PubMed PMID: 6465981. Pubmed Central PMCID: PMC1250471.
- Boshier PR, Anderson O, Hanna GB. Transthoracic versus transhiatal esophagectomy for the treatment of esophagogastric cancer: a meta-analysis. *Ann Surg*. 2011;254(6):894–906 PubMed PMID: 21785341.
- Hulscher JB, van Sandick JW, de Boer AG, Wijnhoven BP, Tijssen JG, Fockens P, et al. Extended transthoracic resection compared with limited transhiatal resection for adenocarcinoma of the esophagus. *N Engl J Med*. 2002;347(21):1662–9 PubMed PMID: 12444180.
- Schnuriger B, Studer P, Candinas D, Seiler CA. Transdiaphragmatic resuscitative open cardiac massage: description of the technique and a first case-series of an alternative approach to the heart. *World J Surg*. 2014;38(7):1726–9 PubMed PMID: 24390285.
- Runge T, Inglin R, Riss P, Selberherr A, Kaderli RM, Candinas D, et al. The advantages of extended subplatysmal dissection in thyroid surgery—the “mobile window” technique. *Langenbeck's Arch Surg*. 2017;402(2):257–63 PubMed PMID: 28050728.
- Uhl W, Strobel O, Friess H, Schilling M, Buchler MW. Fundus rotation gastroplasty: rationale, technique and results. *Dis Esophagus*. 2002;15(2):101–5 PubMed PMID: 12220414.
- Langer R, Becker K. Tumor regression grading of gastrointestinal cancers after neoadjuvant therapy. *Virchows Arch*. 2018;472(2):175–86 PubMed PMID: 28918544.
- Bosman FT, Carneiro F, Hruban RH, Theise ND. WHO classification of tumours of the digestive system, vol. 3; 2010.
- Brierley JD, Gospodarowicz MK, Wittekind C, editors. The TNM classification of malignant tumours. Oxford: Wiley Blackwell; 2017.
- Dindo D, Demartines N, Clavien PA. Classification of surgical complications: a new proposal with evaluation in a cohort of 6336 patients and results of a survey. *Ann Surg*. 2004;240(2):205–13 PubMed PMID: 15273542. Pubmed Central PMCID: 1360123.
- Orringer MB, Marshall B, Chang AC, Lee J, Pickens A, Lau CL. Two thousand transhiatal esophagectomies: changing trends, lessons learned. *Ann Surg*. 2007;246(3):363–72 discussion 72–4. PubMed PMID: 17717440. Pubmed Central PMCID: 1959358.
- Walther B, Johansson J, Johnsson F, Von Holstein CS, Zilling T. Cervical or thoracic anastomosis after esophageal resection and gastric tube reconstruction: a prospective randomized trial comparing sutured neck anastomosis with stapled intrathoracic anastomosis. *Ann Surg*. 2003;238(6):803–12 discussion 12–4. PubMed PMID: 14631217. Pubmed Central PMCID: 1356162.
- Low DE, Kuppusamy MK, Alderson D, Ceccanello I, Chang AC, Darling G, et al. Benchmarking complications associated with Esophagectomy. *Ann Surg*. 2019;269(2):291–8 PubMed PMID: 29206677.
- Luketich JD, Pennathur A, Awais O, Levy RM, Keeley S, Shende M, et al. Outcomes after minimally invasive esophagectomy: review of over 1000 patients. *Ann Surg*. 2012;256(1):95–103 PubMed PMID: 22668811. Pubmed Central PMCID: 4103614.
- In H, Palis BE, Merkow RP, Posner MC, Ferguson MK, Winchester DP, et al. Doubling of 30-day mortality by 90 days after Esophagectomy: a critical measure of outcomes for quality improvement. *Ann Surg*. 2016;263(2):286–91 PubMed PMID: 25915912.
- Omloo JM, Lagarde SM, Hulscher JB, Reitsma JB, Fockens P, van Dekken H, et al. Extended transthoracic resection compared with limited transhiatal resection for adenocarcinoma of the mid/distal esophagus: five-year survival of a randomized clinical trial. *Ann Surg*. 2007;246(6):992–1000 discussion –1. PubMed PMID: 18043101.
- Sihag S, Kosinski AS, Gaissert HA, Wright CD, Schipper PH. Minimally invasive versus open Esophagectomy for esophageal Cancer: a comparison of early surgical outcomes from the Society of Thoracic Surgeons National Database. *Ann Thorac Surg*. 2016;101(4):1281–8 discussion 8-9. PubMed PMID: 26704412.
- Straatman J, van der Wielen N, Cuesta MA, Daams F, Roig Garcia J, Bonavina L, et al. Minimally invasive versus open esophageal resection: three-year follow-up of the previously reported randomized controlled trial: the TIME trial. *Ann Surg*. 2017;266(2):232–6 PubMed PMID: 28187044.
- Noordman BJ, van Klaveren D, van Berge Henegouwen MI, Wijnhoven BPL, Gisbertz SS, Lagarde SM, et al. Impact of surgical approach on long-term survival in esophageal adenocarcinoma patients with or without neoadjuvant chemoradiotherapy. *Ann Surg*. 2018;267(5):892–7 PubMed PMID: 28350565.
- van Hagen P, Hulshof MC, van Lanschot JJ, Steyerberg EW, van Berge Henegouwen MI, Wijnhoven BP, et al. Preoperative chemoradiotherapy for esophageal or junctional cancer. *N Engl J Med*. 2012;366(22):2074–84 PubMed PMID: 22646630.
- Peyre CG, Hagen JA, DeMeester SR, Altorki NK, Ancona E, Griffin SM, et al. The number of lymph nodes removed predicts survival in esophageal cancer: an international study on the impact of extent of surgical resection. *Ann Surg*. 2008;248(4):549–56 PubMed PMID: 18936567.
- Trastulli S, Farinella E, Cirocchi R, Cavaliere D, Avenia N, Sciannameo F, et al. Robotic resection compared with laparoscopic rectal resection for cancer: systematic review and meta-analysis of short-term outcome. *Color Dis*. 2012;14(4):e134–56 PubMed PMID: 22151033.
- Abbas MA, Chang GJ, Read TE, Rothenberger DA, Garcia-Aguilar J, Peters W, et al. Optimizing rectal cancer management: analysis of current evidence. *Dis Colon Rectum*. 2014;57(2):252–9 PubMed PMID: 24401889.
- Cuesta MA, Weijts TJ, Bleys RL, van Hillegersberg R, van Berge Henegouwen MI, Gisbertz SS, et al. A new concept of the anatomy of the thoracic oesophagus: the meso-oesophagus. Observational study during thoracoscopic esophagectomy. *Surg Endosc*. 2015;29(9):2576–82 PubMed PMID: 25480608.
- van der Sluis PC, Ruarda JP, van der Horst S, Verhage RJ, Besselink MG, Prins MJ, et al. Robot-assisted minimally invasive thoraco-laparoscopic esophagectomy versus open transthoracic esophagectomy for resectable esophageal cancer, a randomized controlled trial (ROBOT trial). *Trials*. 2012;13:230 PubMed PMID: 23199187. Pubmed Central PMCID: 3564860.
- Mariette C, Markar SR, Dabakuyo-Yonli TS, Meunier B, Pezet D, Collet D, et al. Hybrid minimally invasive Esophagectomy for esophageal Cancer. *N Engl J Med*. 2019;380(2):152–62 PubMed PMID: 30625052.

34. Dunn DH, Johnson EM, Morpew JA, Dilworth HP, Krueger JL, Banerji N. Robot-assisted transhiatal esophagectomy: a 3-year single-center experience. *Dis Esophagus*. 2013;26(2):159–66 PubMed PMID: 22394116.
35. Fujiwara H, Shiozaki A, Konishi H, Kosuga T, Komatsu S, Ichikawa D, et al. Perioperative outcomes of single-port mediastinoscope-assisted transhiatal esophagectomy for thoracic esophageal cancer. *Dis Esophagus*. 2017;30(10): 1–8 PubMed PMID: 28859387.
36. Birkmeyer JD, Sun Y, Wong SL, Stukel TA. Hospital volume and late survival after cancer surgery. *Ann Surg*. 2007;245(5):777–83 PubMed PMID: 17457171. Pubmed Central PMCID: 1877074.
37. Dimick JB, Pronovost PJ, Heitmiller RF, Lipsett PA. Intensive care unit physician staffing is associated with decreased length of stay, hospital cost, and complications after esophageal resection. *Crit Care Med*. 2001;29(4): 753–8 PubMed PMID: 11373463.

Publisher's Note

Springer Nature remains neutral with regard to jurisdictional claims in published maps and institutional affiliations.

Ready to submit your research? Choose BMC and benefit from:

- fast, convenient online submission
- thorough peer review by experienced researchers in your field
- rapid publication on acceptance
- support for research data, including large and complex data types
- gold Open Access which fosters wider collaboration and increased citations
- maximum visibility for your research: over 100M website views per year

At BMC, research is always in progress.

Learn more biomedcentral.com/submissions

