

RESEARCH

Open Access



Recurrence and prognosis in intrahepatic cholangiocarcinoma patients with different etiology after radical resection: a multi-institutional study

Qi Li¹, Chen Chen¹, Jingbo Su¹, Yinghe Qiu², Hong Wu³, Tianqiang Song⁴, Xianhai Mao⁵, Yu He⁶, Zhangjun Cheng⁷, Jingdong Li⁸, Wenlong Zhai⁹, Dong Zhang¹, Zhimin Geng^{1*} and Zhaohui Tang^{10*}

Abstract

Objective: We aimed to evaluate the prognosis and adjuvant chemotherapy (ACT) in intrahepatic cholangiocarcinoma (ICC) patients with different etiology after radical resection.

Methods: A total of 448 patients with ICC who underwent radical resection between 2010 and 2018 at ten Chinese tertiary hospitals were analyzed in the study. These patients were divided into conventional ICC (Con-ICC, $n = 261$, 58.2%), hepatitis B virus ICC (HBV-ICC, $n = 102$, 22.8%) and hepatolithiasis (Stone-ICC, $n = 85$, 19.0%) subtypes according to different etiology. Propensity score matching (PSM) was conducted to mitigate the baseline differences between Con-ICC and HBV-ICC, Con-ICC and Stone-ICC, HBV-ICC and Stone-ICC subtypes.

Results: Univariate and multivariate analysis showed that different etiology was a prognostic factor for overall survival and relapse-free survival, and different etiology was an independent risk factor for overall survival in ICC patients, respectively ($P < 0.05$). In addition, there was a statistical difference for overall survival in early recurrence patients among the three etiological subtypes ($P < 0.05$). After PSM, the overall survival of patients with Stone-ICC was worse than those of Con-ICC and HBV-ICC subtypes ($P < 0.05$), while the relapse-free survival of patients with Stone-ICC was equivalent to patients with Con-ICC and HBV-ICC ($P > 0.05$). In Stone-ICC patients, the median overall survival was 16.0 months and 29.7 months, and the median relapse-free survival was 9.0 months and 20.0 months for non-ACT and ACT patients, respectively ($P < 0.05$).

Conclusion: The prognosis of Stone-ICC patients was significantly worse than those of Con-ICC and HBV-ICC patients. Interestingly, postoperative adjuvant chemotherapy can improve the prognosis of Stone-ICC patients effectively.

Keywords: Intrahepatic cholangiocarcinoma, Hepatitis B virus, Hepatolithiasis, Recurrence, Prognosis

Introduction

Intrahepatic cholangiocarcinoma (ICC), originating above the secondary branches of the bile duct, is the second most common biliary malignancy and accounts for about 10% to 15% of primary liver carcinoma [1, 2]. In recent years, the incidence of ICC has shown a significant upward trend worldwide [3, 4]. Surgical resection

*Correspondence: gengzhimin@mail.xjtu.edu.cn; tangzhaohui@yahoo.com

¹ Department of Hepatobiliary Surgery, The First Affiliated Hospital of Xi'an Jiaotong University, Xi'an 710061, Shaanxi, China

¹⁰ Department of General Surgery, Xinhua Hospital Affiliated to Shanghai Jiaotong University School of Medicine, Shanghai 200092, China

Full list of author information is available at the end of the article



is the only potentially curative treatment option for ICC patients, but only 20% of the first-diagnosed patients are eligible for radical resection [5]. In addition, the prognosis of ICC patients is very poor, and the median overall survival (OS) and relapse-free survival (RFS) are about 30 months and 20 months, and the 5-year survival rate is approximately 30%, respectively [6, 7]. Besides, the benefits of postoperative adjuvant chemotherapy (ACT) are still unclear for ICC patients and need further research [8, 9].

Currently, the pathogenic factors of ICC are geographically different, mainly including primary sclerosing cholangitis (PSC), Caroli disease, cirrhosis, non-alcoholic fatty liver disease (NLFLD), hepatitis B virus (HBV) infection, intrahepatic bile duct stones (hepatolithiasis), and liver flukes [10–13]. According to the epidemiological data from China, hepatolithiasis and HBV infection are the most important risk factors for the occurrence of ICC, account for 15~30% of ICC patients with hepatolithiasis and 30~50% with HBV infection, respectively [14–17]. Different etiological subtypes have variable pathological characteristics, leading to the differences on prognosis of ICC patients. However, the differences on OS and RFS, as well as the benefits of ACT on prognosis of the three etiological subtypes for ICC patients are still unclear. The study aimed to evaluate the prognosis and the benefits of ACT in ICC patients with different etiology after radical resection.

Methods

Patients and design

All patients undergoing curative resection for histologically confirmed ICC between 2010 and 2018 at ten tertiary hospitals in China (Oriental Hepatobiliary Hospital Affiliated to Naval Medical University; West China Hospital of Sichuan University; Tianjin Medical University Cancer Institute and Hospital; Hunan Provincial People's Hospital; The First Hospital Affiliated to Army Medical University; Zhongda Hospital of Southeast University; The First Affiliated Hospital of Xi'an Jiaotong University; Affiliated Hospital of North Sichuan Medical College; Xinhua Hospital Affiliated to Shanghai Jiaotong University School of Medicine; The First Affiliated Hospital of Zhengzhou University) were considered for inclusion.

The inclusion criteria were as follows: (1) patients underwent radical resection and margin status recorded microscopically negative (R0); (2) patients with HBV infection (HBsAg (+) and /or HBeAb (+)); (3) patients with bile duct stones in histology; (4) the data of clinicopathological characteristics and follow-up data were all available. The exclusion criteria were as follows: (1) the history of HBV infection and hepatolithiasis was not recorded in detail; (2) patients combined with HCV

infection or HCV+HBV infection or HBV+hepatolithiasis or HCV+hepatolithiasis before surgery; (3) patients combined with PSC or Caroli disease in histology; (4) patients died within 30 days after surgery. In this study, ICC only with HBV infection (HBsAg (+) and /or HBeAb (+)) was defined as HBV-ICC, ICC only with hepatolithiasis was defined as Stone-ICC, and ICC with no identifiable cause (such as HBV, HCV, hepatolithiasis, PSC, Caroli disease, NLFLD, etc.) was defined as Con-ICC. Finally, a total of 448 patients were included in the study after the strict inclusion and exclusion criteria. All included patients were evaluated according to the 8th edition AJCC staging system and were followed up through December 2020.

The regimens of postoperative ACT

Patients with postoperative ACT were strictly performed as follows. The regimens of included gemcitabine (1000 mg/m² on days 1 and 8)+capecitabine (1250 mg/m² twice daily on days 1–14) of a three-week cycle; gemcitabine (1000 mg/m² on days 1 and 8)+cisplatin (30 mg/m² on days 1 and 8) of a three-week cycle; gemcitabine (1000 mg/m² on days 1 and 8)+oxaliplatin (100 mg/m² on day 1) of a three-week cycle; gemcitabine (1000 mg/m² on days 1 and 8)+tegafur (40~60 mg twice daily on days 1–14) of a three-week cycle.

In this study, the inclusion criteria for ACT included T₂₋₄ stage, N1 stage, combined with major vascular invasion, or microvascular invasion, or perineural invasion, which was associated with high postoperative recurrence risk, and the selection of the chemotherapy regimen was mainly based on the ASCO clinical practice guideline [18], and whether the patient was tolerant to the drug. There were 166 patients with ICC who received ACT. Among the 90 Con-ICC patients, 25 (27.8%) patients received gemcitabine+capecitabine, 27 (30.0%) patients received gemcitabine+cisplatin, 30 (33.3%) patients received gemcitabine+oxaliplatin, and 8 (8.9%) patients received gemcitabine+tegafur, respectively. Among the 45 HBV-ICC patients, 12 (26.7%) patients received gemcitabine+capecitabine, 16 (35.5%) patients received gemcitabine+cisplatin, 14 (31.1%) patients received gemcitabine+oxaliplatin, and 3 (6.7%) patients received gemcitabine+tegafur, respectively. Among the 31 Stone-ICC patients, 6 (19.4%) patients received gemcitabine+capecitabine, 14 (45.2%) patients received gemcitabine+cisplatin, and 11 (35.4%) patients received gemcitabine+oxaliplatin, respectively.

Follow-up

All patients included in the study were followed up after surgery. Routine follow-up was performed in outpatient and telephone. Liver function, tumor biomarkers (CEA,

CA19-9, CA125), and ultrasound, contrast-enhanced CT or MRI examination were reviewed every 2 to 3 months within 1 year after surgery, and follow-up was conducted once every 3–6 months for more than 1 year after surgery. Recurrence referred to the discovery of new lesions by two or more imaging examinations. OS and RFS were calculated from the date of radical resection until the date of the most recent follow-up or death of the patients, and clinical evidence of tumor recurrence, respectively.

Propensity score matching

Propensity score matching (PSM), as a very practical, novel, and creative statistical method for evaluating intervention effects using non-randomized controlled data, was conducted to mitigate the baseline differences affecting long-term outcomes between Con-ICC and HBV-ICC, Con-ICC and Stone-ICC, HBV-ICC and Stone-ICC subtypes [19], which was conducted by SPSS version 25 (IBM Corp., Armonk, NY, USA). Propensity score analysis with 1:1 matching was performed within a range of 0.02 of standard deviation.

Statistical analysis

All statistical analyses were performed using SPSS version 25. Categorical variables were examined using χ^2 test. The Kaplan–Meier method and Log-rank test were conducted for univariate analysis, and Cox proportional hazard regression model was conducted for multivariate analysis. The Kaplan–Meier curves and histograms were conducted by GraphPad Prism (version 8.0, San Diego, California, USA). Variables with $P < 0.05$ were considered as statistically significant.

Results

Comparison of clinicopathological characteristic for different etiological subtypes in ICC Patients

A total of 448 patients undergoing radical resection for histologically confirmed ICC between 2010 and 2018 were considered for inclusion. The comparison of clinicopathological characteristic of Con-ICC (no identifiable cause, $n = 261$, 58.2%), HBV-ICC ($n = 102$, 22.8%) and Stone-ICC ($n = 85$, 19.0%) was summarized in Table 1. The three etiological subtypes in ICC patients had a certain correlation with clinicopathological characteristics of sex, age (year), obstructive jaundice, CA19-9, Child–Pugh grade, tumor location, morphologic grape, perineural invasion, liver capsule involvement, and AJCC 8th edition N stage ($P < 0.05$). In addition, Stone-ICC had a higher proportion of CA19-9 > 39.0 U/ml, presence of perineural invasion, and morphologic grape with periductal infiltrating and intraductal growth compared with HBV-ICC ($P < 0.05$).

Survival analysis on OS and RFS in the whole cohort

The 1-, 3-, and 5-year OS rates of ICC patients were 84.9%, 42.4%, and 20.0%, and 1-, 3-, and 5-year RFS rates of ICC patients were 56.5%, 20.6%, and 10.3%, respectively. Median OS and RFS were 28.0 and 14.9 months, respectively. Univariate analysis showed that different etiology was a prognostic factor for OS and RFS of patients with ICC after radical resection, respectively (Supplemental Fig. 1, $P < 0.05$). Multivariate analysis showed that different etiology was an independent risk factor for OS. Detailed results of the univariate and multivariate analysis are shown in Table 2.

To eliminate the differences and be comparable of baseline clinicopathological characteristics between related two subtypes, a 1:1 PSM was utilized to identify 102 pairs of patients with Con-ICC and HBV-ICC, 70 pairs of patients with Con-ICC and Stone-ICC, 37 pairs of patients with HBV-ICC and Stone-ICC. The baseline characteristics of three groups before and after PSM are showed in Supplemental Tables 1–3. Before and after PSM, the OS and RFS of patients with Con-ICC and HBV-ICC were not statistically significant (Fig. 1, 2-A and B, $P > 0.05$); however, the OS of patients with Stone-ICC was worse than those of Con-ICC and HBV-ICC subtypes (Fig. 1, 2-C and E, $P < 0.05$), while the RFS of patients with Stone-ICC was equivalent to patients with Con-ICC and HBV-ICC (Fig. 2- D and F, $P > 0.05$). Therefore, the results showed that the prognosis of Stone-ICC subtype was significantly worse than those of Con-ICC and HBV-ICC subtypes.

Comparison of recurrence and survival

By comparing overall recurrence, early recurrence (RFS ≤ 1 year after surgery), and OS for the different etiological subtypes in a proportion of ICC patients, the results showed that there was no statistical difference in the proportion of patients with overall recurrence and early recurrence (Fig. 3-A and B, $P > 0.05$). By further comparing the difference of OS in early recurrence and non-early recurrence patients, there was a statistical difference with the three etiological subtypes in early recurrence patients, and Stone-ICC tended to have a worse prognosis (Fig. 3-C, $P < 0.05$), while there was no statistical difference in non-early recurrence patients (Fig. 3-D, $P > 0.05$). Therefore, the survival difference of the three etiological subtypes was mainly for OS in patients with early recurrence.

Comparison of OS and RFS in ACT

To determine whether the ACT regimens affected the prognosis of patients, we first analyzed the prognosis differences among the four regimens for patients

Table 1 Comparison of clinicopathological characteristic for ICC with different etiological subtypes after radical resection

	ICC with different etiological subtypes			χ^2	P value
	Con-ICC (%)	HBV-ICC (%)	Stone-ICC (%)		
Sex					
Male	127(48.7)	63(61.8)	33(38.8)	10.073	0.006
Female	134(51.3)	39(38.2)	52(61.2)		
Age (year)					
≤ 55	110(42.1)	51(50.0)	26(30.6)	7.226	0.027
> 55	151(57.9)	51(50.0)	59(69.4)		
Obstructive jaundice					
No	246(94.3)	100(98.0)	69(81.2)	21.723	< 0.001
Yes	15(5.7)	2(2.0)	16(18.8)		
AFP (ng/ml)					
≤ 7.0	203(78.8)	77(75.5)	63(74.1)	0.563	0.755
> 7.0	58(22.2)	25(24.5)	22(25.9)		
CEA (ng/ml)					
≤ 5.0	200(76.6)	77(75.5)	60(70.6)	1.260	0.533
> 5.0	61(23.4)	25(24.5)	25(29.4)		
CA19-9(U/ml)					
≤ 39.0	121(46.1)	48(47.1)	25(29.4)	8.260	0.016
> 39.0	140(53.6)	54(52.9)	60(70.6)		
CA125(U/ml)					
≤ 35.0	161(61.7)	59(57.8)	51(60.0)	0.464	0.793
> 35.0	100(38.3)	43(42.2)	34(40.0)		
Child-Pugh Grade					
Grade A	247(94.6)	99(97.1)	74(87.1)	8.750	0.013
Grade B	14(5.4)	3(2.9)	11(12.9)		
Type of resection					
Wedge resection	108(41.4)	49(48.0)	28(32.9)	8.722	0.068
Minor hepatectomy	109(41.8)	43(42.2)	36(42.4)		
Major hepatectomy	44(16.9)	10(9.8)	21(24.7)		
Tumor differentiation					
Well	17(6.5)	4(3.9)	7(8.2)	3.227	0.521
Moderate	164(62.8)	59(57.8)	49(57.6)		
Poor	80(30.7)	39(38.2)	29(34.1)		
Tumor location					
Left	128(49.0)	36(35.3)	56(65.9)	18.423	0.001
Right	99(37.9)	53(52.0)	23(27.1)		
Left and right	34(13.0)	13(12.7)	6(7.1)		
Morphologic grape					
Mass-forming	221(84.7)	88(86.3)	51(60.0)	28.811	< 0.001
Periductal infiltrating	24(9.2)	8(7.8)	17(20.0)		
Intraductal growth	16(6.1)	6(5.9)	17(20.0)		
Tumor size (cm)					
≤ 5.0	135(51.7)	52(51.0)	50(58.8)	1.493	0.474
> 5.0	126(48.3)	50(49.0)	35(41.2)		
Major vascular invasion					
No	217(83.1)	91(89.2)	69(81.2)	2.725	0.256
Yes	44(16.9)	11(10.8)	16(18.8)		

Table 1 (continued)

	ICC with different etiological subtypes			χ^2	P value
	Con-ICC (%)	HBV-ICC (%)	Stone-ICC (%)		
Microvascular invasion					
No	235(90.0)	87(85.3)	71(83.5)	3.246	0.197
Yes	26(10.0)	15(14.7)	14(16.5)		
Perineural invasion					
No	223(85.4)	96(94.1)	66(77.6)	10.535	0.005
Yes	38(14.6)	6(5.9)	19(22.4)		
Liver capsule involvement					
No	180(69.0)	64(62.7)	69(81.2)	7.722	0.021
Yes	81(31.0)	38(37.3)	16(18.8)		
AJCC 8th edition T stage					
T _{1a} /T _{1b}	63(24.1)	27(26.5)	26(30.6)	3.817	0.431
T ₂	132(50.6)	45(44.1)	43(50.6)		
T ₃ /T ₄	66(25.3)	30(29.4)	16(18.8)		
AJCC 8th edition N stage					
N0	193(73.9)	82(80.4)	61(71.8)	2.211	0.031
N1	68(26.1)	20(19.6)	24(28.2)		
AJCC 8th edition TNM stage					
IA/IB	119(45.6)	42(41.2)	45(52.9)	3.540	0.472
II	40(15.3)	20(19.6)	10(11.8)		
IIIA/IIIB/IV	102(39.1)	40(39.2)	30(35.3)		

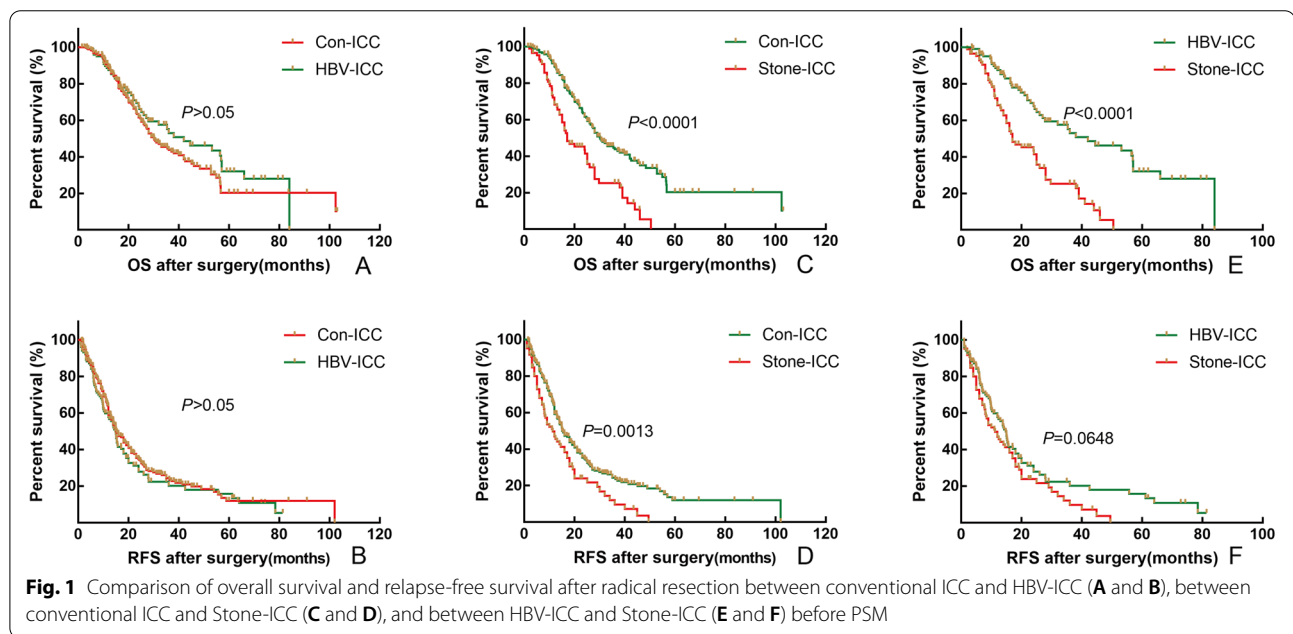


Fig. 1 Comparison of overall survival and relapse-free survival after radical resection between conventional ICC and HBV-ICC (A and B), between conventional ICC and Stone-ICC (C and D), and between HBV-ICC and Stone-ICC (E and F) before PSM

with postoperative ACT, and the results showed that there was no difference in OS and RFS among different chemotherapy regimens ($P > 0.05$). By analyzing the prognostic improvement value of ACT for different etiological subtypes in ICC patients, the results showed that in

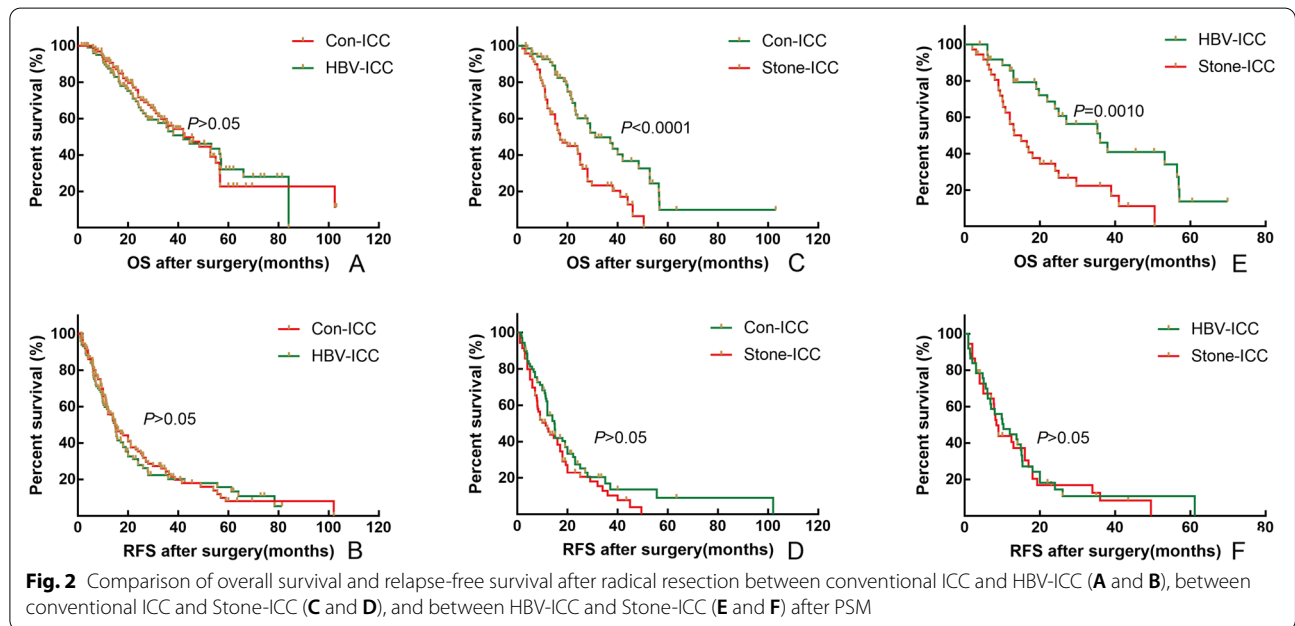
Con-ICC patients, the median OS was 30.2 months and 30.2 months, and the median RFS was 14.9 months and 19.0 months for non-ACT and ACT patients, respectively (Fig. 4-A and B, $P > 0.05$); in HBV-ICC patients, the median OS was 38.0 months and 44.5 months, and

Table 2 Univariate and multivariate analysis of prognosis for ICC after radical resection

	OS				RFS			
	Univariate analysis		Multivariate analysis		Univariate analysis		Multivariate analysis	
	HR (95%CI)	P	HR (95%CI)	P	HR (95%CI)	P	HR (95%CI)	P
Sex								
Female vs Male	0.935(0.721 ~ 1.212)	0.610			0.891(0.717 ~ 1.109)	0.302		
Age (year)								
> 55 vs ≤ 55	1.242(0.955 ~ 1.615)	0.105			1.046(0.838 ~ 1.305)	0.693		
Obstructive jaundice								
Yes vs No	1.172(0.872 ~ 2.150)	0.175			1.090(0.729 ~ 1.628)	0.675		
Etiology								
HBV-ICC vs Con-ICC	0.801(0.567 ~ 1.130)	0.206	0.862(0.608 ~ 1.223)	0.405	1.143(0.873 ~ 1.498)	0.331		
Stone-ICC vs Con-ICC	2.185(1.597 ~ 2.989)	< 0.001	2.009(1.447 ~ 2.789)	< 0.001	1.563(1.181 ~ 2.068)	0.002		
AFP (ng/ml)								
> 7.0 vs ≤ 7.0	1.137(0.834 ~ 1.550)	0.416			1.041(0.804 ~ 1.348)	0.761		
CEA (ng/ml)								
> 5.0 vs ≤ 5.0	1.439(1.076 ~ 1.923)	0.014			1.348(1.054 ~ 1.725)	0.017		
CA19-9(U/ml)								
> 39.0 vs ≤ 39.0	1.378(1.056 ~ 1.798)	0.018			1.370(1.097 ~ 1.711)	0.006	1.252(1.010 ~ 1.568)	0.030
CA125(U/ml)								
> 35.0 vs ≤ 35.0	1.604(1.218 ~ 2.111)	0.001			1.308(1.046 ~ 1.635)	0.019		
Child-Pugh Grade								
Grade B vs A	1.150(0.709 ~ 1.866)	0.570			1.006(0.662 ~ 1.526)	0.979		
Type of resection								
Minor hepatectomy vs Wedge resection	1.718(1.284 ~ 2.297)	< 0.001	1.157(1.127 ~ 2.043)	0.006	1.684(1.318 ~ 2.151)	< 0.001	1.515(1.183 ~ 1.941)	0.001
Major hepatectomy vs Wedge resection	1.962(1.344 ~ 2.864)	< 0.001	1.405(1.149 ~ 2.080)	0.019	1.829(1.324 ~ 2.528)	< 0.001	1.733(1.245 ~ 2.411)	0.001
Lymphadenectomy								
Yes vs No	0.909(0.697 ~ 1.185)	0.479			1.048(0.837 ~ 1.312)	0.683		
Tumor differentiation								
Moderate vs Well	1.318(0.739 ~ 2.352)	0.350			1.002(0.644 ~ 1.560)	0.993		
Poor vs Well	2.243(1.228 ~ 4.095)	0.009			1.597(1.108 ~ 2.302)	0.012		
Tumor location								
Right vs Left	0.689(0.518 ~ 1.129)	0.069			0.890(0.704 ~ 1.127)	0.334		
Left and right vs Left	0.857(0.556 ~ 1.321)	0.485			0.976(0.685 ~ 1.391)	0.895		
Morphologic grape								
Periductal infiltrating vs Mass-forming	0.871(0.559 ~ 1.358)	0.543			0.997(0.700 ~ 1.420)	0.986		
Intraductal growth vs Mass-forming	0.825(0.502 ~ 1.357)	0.448			0.789(0.530 ~ 1.174)	0.789		
Tumor size (cm)								
> 5.0 vs ≤ 5.0	1.517(1.148 ~ 2.003)	0.003	1.352(1.034 ~ 1.797)	0.028	1.164(0.936 ~ 1.149)	0.173		
Major vascular invasion								
Yes vs No	1.716(1.249 ~ 2.357)	0.001			1.606(1.217 ~ 2.121)	0.001		
Microvascular invasion								
Yes vs No	1.506(1.009 ~ 2.248)	0.045			1.748(1.388 ~ 2.202)	< 0.001	1.788(1.400 ~ 2.257)	< 0.001
Perineural invasion								
Yes vs No	2.068(1.421 ~ 3.008)	< 0.001			1.331(0.964 ~ 1.838)	0.083		
Liver capsule involvement								
Yes vs No	1.136(0.857 ~ 1.507)	0.375			1.262(0.894 ~ 1.783)	0.186		

Table 2 (continued)

	OS				RFS				
	Univariate analysis		Multivariate analysis		Univariate analysis		Multivariate analysis		
	HR (95%CI)	P	HR (95%CI)	P	HR (95%CI)	P	HR (95%CI)	P	
AJCC 8th edition T stage									
T ₂ vs T _{1a} /T _{1b}	1.317(0.947~1.831)	0.101			1.164(0.885~1.532)	0.277			
T ₃ /T ₄ vs T _{1a} /T _{1b}	1.559(1.080~2.250)	0.018			1.713(1.273~2.305)	<0.001			
AJCC 8th edition N stage									
N1 vs N0	1.949(1.459~2.603)	<0.001	1.791(1.334~2.406)	<0.001	1.648(1.289~2.106)	<0.001	1.378(1.070~1.776)	0.013	
AJCC 8th edition TNM stage									
II vs IA/IB	1.362(0.947~1.961)	0.096			1.258(0.907~1.746)	0.170			
IIIA/IIIB/IV vs IA/IB	1.521(1.138~2.033)	0.005			1.732(1.365~2.198)	<0.001			
Adjuvant chemotherapy									
Yes vs No	0.685(0.520~0.902)	0.007	0.632(0.469~0.851)	0.003	0.715(0.568~0.901)	0.005	0.655(0.517~0.831)	<0.001	

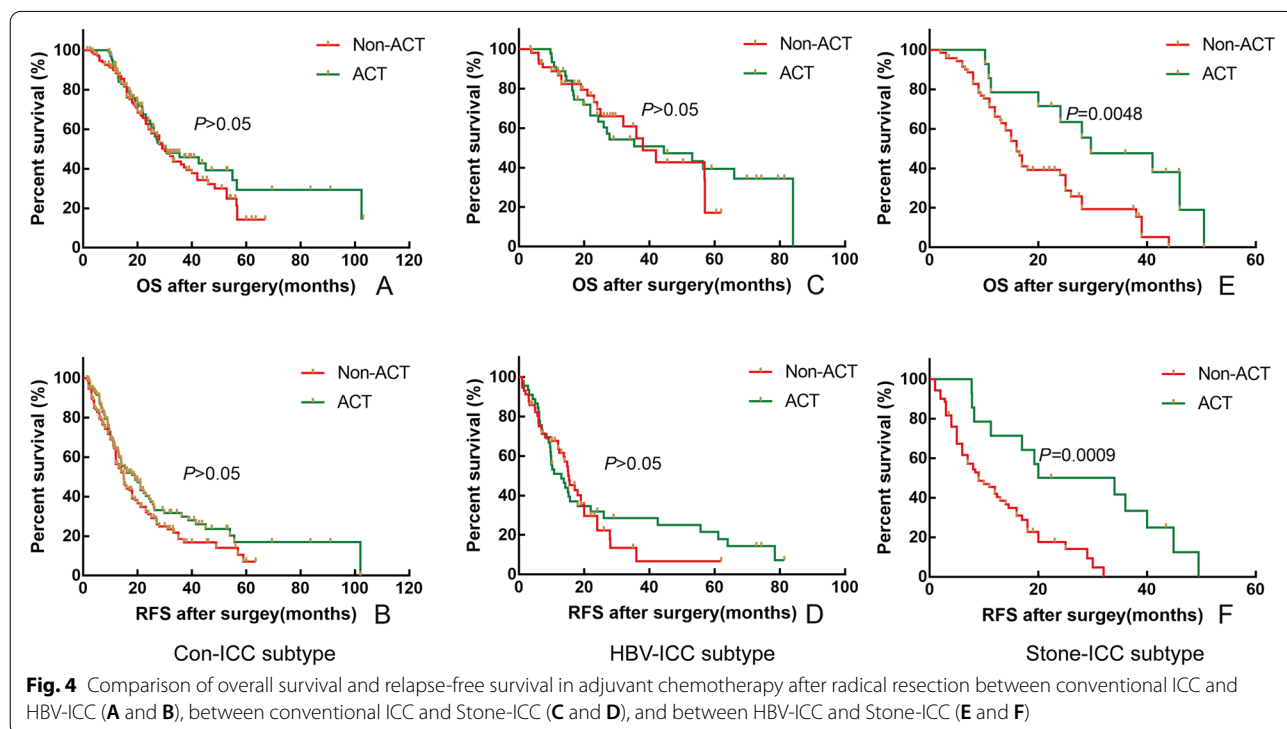
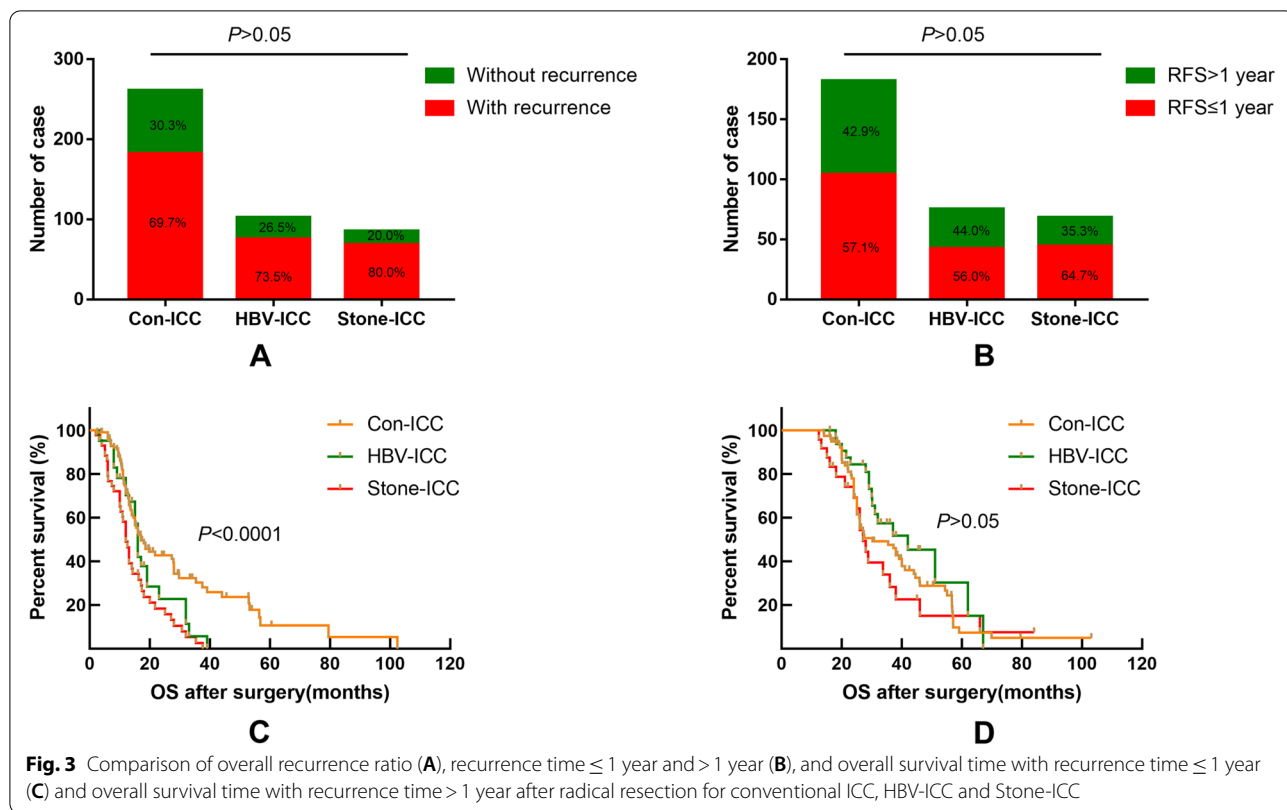


the median RFS was 13.0 months and 15.3 months for non-ACT and ACT patients, respectively (Fig. 4-C and D, $P>0.05$); in Stone-ICC patients, the median OS was 16.0 months and 29.7 months, and the median RFS was 9.0 months and 20.0 months for non-ACT and ACT patients, respectively (Fig. 4-E and F, $P<0.05$). Therefore, postoperative ACT can improve the OS and RFS of Stone-ICC patients effectively.

Discussion

Hepatolithiasis and HBV infection as the two most common risk factors for ICC in China, and ICC without a clear cause (conventional-ICC) were the mainly specific

pathogenic factors in present studies [14–17, 20]. Therefore, we divided the etiology of ICC patients into three subtypes, Con-ICC (no identifiable cause), HBV-ICC, and Stone-ICC. Survival analysis showed that the OS and RFS were statistically significant among the three etiological subtypes, and the etiology of ICC was identified as an independent risk factor for OS. To further compare the survival differences between related two etiological subtypes, PSM was conducted to eliminate differences in baseline clinicopathological characteristics. After PSM, the OS of patients with Stone-ICC was worse than those of Con-ICC and HBV-ICC subtypes, while the RFS of patients with Stone-ICC was equivalent to patients with



Con-ICC and HBV-ICC. Wang et al. [21] conducted a single institutional study and found that Stone-ICC had a worse prognosis compared to HBV-ICC after PSM. Similarly, Zhang et al. [20] conducted an international multi-institutional study and also found that Stone-ICC had a worse prognosis than Con-ICC and HBV-ICC subtypes, and they further found that Stone-ICC and Con-ICC had statistical differences in OS and RFS, while Stone-ICC and HBV-ICC had no difference on prognosis after PSM. In this study, we also found that there was no statistical difference in the proportion of patients with overall recurrence, early recurrence and OS in non-early recurrence patients with the three etiological subtypes, while there was a statistical difference of $OS \leq 1$ year, OS with 1~3 year and $OS > 3$ years in early recurrence patients. So, the survival difference of ICC with the different etiological subtypes was mainly in OS, especially in patients with early recurrence.

To further explore the reasons for the differences in the prognosis of ICC with different etiology, we analyzed the differences in clinicopathological characteristics of ICC with the three etiological subtypes. Based on the above results, we considered that the prognostic differences of ICC with different etiology had a strong correlation with its clinicopathological characteristics. Widespread epidemics with HBV infection in China increase integration of HBV gene fragments into liver cells, which contributes to ICC and also causes the HBV-ICC of China with highest distribution in the world [22–24]. In this study, the results showed that the prognosis of patients with HBV-ICC was better than those of Con-ICC and Stone-ICC subtypes. Ding et al. [25] have found that the patients with HBV-ICC can activate the immune memory produced by HBV infection previously, thereby enhancing anti-tumor immunity, and Iida et al. [26] have also revealed that HBV-ICC conferred a low risk of lymph node metastasis for postoperative recurrence, which may be the reason that HBV-ICC has a relatively better prognosis than the other two etiological subtypes. Many studies [21, 27, 28] also found that HBV infection was a favorable prognostic factor for ICC after surgery, which was consistent with our results.

Unfortunately, patients with Stone-ICC had the worst prognosis in the study. Wang et al. [21] revealed that patients with Stone-ICC were often difficult to differentiate with benign biliary strictures, resulting in patients who were mostly diagnosed in the advanced stage. Due to the presence of hepatolithiasis, it can lead to long-term chronic inflammation, followed by dysplasia and multiple tumors. In addition, the proportion of Stone-ICC with elevated CA19-9, multiple tumors, and lymph node metastasis was significantly higher than the other two etiological types [21, 29, 30]. In this study, Stone-ICC had

a higher proportion of $CA19-9 > 39.0$ U/ml, presence of perineural invasion, morphologic grape with periductal infiltrating and intraductal growth, and N1 stage compared with HBV-ICC and Con-ICC, which could explain the reason why Stone-ICC had a poor prognosis. Thus, we suggest a more aggressive preventive surgery for those patients with a long-term history of hepatolithiasis to avoid the presence of ICC.

At present, due to limited prospective data on the benefits of systemic ACT for ICC patients after radical resection [9], whether postoperative ACT could improve the prognosis of ICC patients is still controversial [31, 32]. In this study, we found that postoperative ACT could improve the OS and RFS effectively, and non-ACT was identified as an independent risk factor for ICC patients (Table 2). Recently, some studies [33, 34] proved that postoperative ACT was beneficial to the prognosis for ICC after surgery. By analyzing the prognostic improvement value of ACT for different etiological subtypes in ICC patients, the results showed that postoperative ACT was a benefit to Stone-ICC patients on OS and RFS. However, ACT did not significantly improve the prognosis for Con-ICC and HBV-ICC patients. Altman et al. [35] and Ke et al. [36] reported that ACT improving OS was related to more patients with lymph node-positive or T3/T4 stage. We considered that ACT improving the prognosis of Stone-ICC was related to its high proportion of elevated CA19-9, perineural invasion, N1 stage patients. Of course, whether ACT can improve the prognosis of Con-ICC and HBV-ICC patients still needs further research.

However, there were several limitations in our study. The study included 448 ICC patients after radical resection from 10 medical centers in China, which effectively increased the universality of the study, while the sample size was still relatively small. Besides, the study did not include ICC patients from Western countries, because the role of hepatolithiasis and HBV infection was not as important as those patients in China. In addition, the preoperative inflammatory indicators were not available, so the differences of the three etiological subtypes of inflammatory response were not further compared. Accordingly, we should clarify the molecular mechanisms and prognostic monitoring indicators for ICC with different etiology in the future, so as to provide references and decision support for the individualized diagnosis, treatment and prevention for ICC patients.

Conclusion

In conclusion, this study retrospectively analyzed 448 ICC patients with different etiology after radical resection, the survival difference of ICC with different etiological subtypes was mainly in OS, especially in patients

with early recurrence, but there was no difference in RFS. Importantly, different etiology was identified as an independent risk factor for OS in patients with ICC after radical resection. The prognosis of Stone-ICC patients was significantly worse than those of Con-ICC and HBV-ICC patients. Interestingly, postoperative ACT can improve the prognosis of Stone-ICC patients.

Abbreviations

ICC: Intrahepatic cholangiocarcinoma; ACT: Adjuvant chemotherapy; PSM: Propensity score matching; PSC: Primary sclerosing cholangitis; NLFLD: Non-alcoholic fatty liver disease; HBV: Hepatitis B virus; OS: Overall survival; RFS: Relapse-free survival.

Supplementary Information

The online version contains supplementary material available at <https://doi.org/10.1186/s12885-022-09448-w>.

Additional file 1.

Additional file 2: Supplement Fig 1. Comparison of overall survival and relapse-free survival after radical resection for conventional ICC, HBV-ICC and Stone-ICC (A and B).

Acknowledgements

No further acknowledgments.

Statement

All methods were carried out in accordance with relevant guidelines and regulations in the study.

Authors' contributions

Z. Geng, and Z. Tang conceived and designed the experiments. Q. Li and J. Su performed the experiments. Y. Qiu, H. Wu, T. Song, X. Mao, Y. He, Z. Cheng, J. Li, and W. Zhai collected and offered the data. Q. Li, C. Chen, and D. Zhang conducted statistical analysis. Q. Li wrote the paper. Z. Geng and Z. Tang reviewed the manuscript. All authors read and approved the final manuscript.

Funding

Supported by the National Natural Science Foundation of China (No. 62076194, No. 81772521); Multicenter Clinical Research Project of Shanghai Jiaotong University, School of Medicine (DLY201807); Clinical Training Program of Shanghai Xinhua Hospital Affiliated to Shanghai Jiaotong University, School of Medicine(17CSK06).

Availability of data and materials

This manuscript contains all associated data.

Declarations

Ethics approval and consent to participate

The study was approved by the ethics committee of Xinhua Hospital Affiliated to Shanghai Jiaotong University School of Medicine (No: XHEC-JDYXY-2018-002), Shanghai, China, as well as from the ethics committees of the other study centers. Written informed consent was obtained from all included patients and their families before study enrollment.

Consent for publication

Not applicable.

Competing interests

The authors declare that they have no competing interests.

Author details

¹Department of Hepatobiliary Surgery, The First Affiliated Hospital of Xi'an Jiaotong University, Xi'an 710061, Shaanxi, China. ²Department of Biliary Surgery, Oriental Hepatobiliary Hospital Affiliated to Naval Medical University, Shanghai 200433, China. ³Department of Hepatobiliary and Pancreatic Surgery, West China Hospital of Sichuan University, Chengdu 610041, China. ⁴Department of Hepatobiliary Oncology, Tianjin Medical University Cancer Hospital, Tianjin 300060, China. ⁵Department of Hepatobiliary Surgery, Hunan Provincial People's Hospital, Changsha 410005, China. ⁶Department of Hepatobiliary Surgery, The First Hospital Affiliated to Army Medical University, Chongqing 400038, China. ⁷Department of Hepatobiliary Surgery, Zhongda Hospital of Southeast University, Nanjing 210009, China. ⁸Department of Hepatobiliary Surgery, Affiliated Hospital of North Sichuan Medical College, Nanchong 637000, China. ⁹Hepatobiliary Pancreas and Liver Transplantation Surgery, The First Affiliated Hospital of Zhengzhou University, Zhengzhou 450052, China. ¹⁰Department of General Surgery, Xinhua Hospital Affiliated to Shanghai Jiaotong University School of Medicine, Shanghai 200092, China.

Received: 26 November 2021 Accepted: 24 March 2022

Published online: 26 March 2022

References

- Massarweh NN, El-Serag HB. Epidemiology of hepatocellular carcinoma and intrahepatic cholangiocarcinoma. *Cancer Control*. 2017;24(3):1145164509.
- Moieni A, Sia D, Bardeesy N, et al. Molecular pathogenesis and targeted therapies for intrahepatic cholangiocarcinoma. *Clin Cancer Res*. 2016;22(2):291–300.
- Razumilava N, Gores GJ. Cholangiocarcinoma. *Lancet*. 2014;383(9935):2168–79.
- Sirica AE, Gores GJ, Groopman JD, et al. Intrahepatic cholangiocarcinoma: continuing challenges and translational advances. *Hepatology*. 2019;69(4):1803–15.
- Amini N, Ejaz A, Spolverato G, et al. Temporal trends in liver-directed therapy of patients with intrahepatic cholangiocarcinoma in the United States: a population-based analysis. *J Surg Oncol*. 2014;110(2):163–70.
- Groot KB, Fong Y. Outcomes in biliary malignancy. *J Surg Oncol*. 2014;110(5):585–91.
- Cillo U, Fondevila C, Donadon M, et al. Surgery for cholangiocarcinoma. *Liver Int*. 2019;39(Suppl 1):143–55.
- Luvira V, Satitkarnmanee E, Pugkhem A, et al. Postoperative adjuvant chemotherapy for resectable cholangiocarcinoma. *Cochrane Database Syst Rev*. 2021;9(9):D12814.
- Doherty MK, Knox JJ. Adjuvant therapy for resected biliary tract cancer: a review. *Chin Clin Oncol*. 2016;5(5):64.
- Khan SA, Tavalari S, Brandi G. Cholangiocarcinoma: epidemiology and risk factors. *Liver Int*. 2019;39(Suppl 1):19–31.
- Clements O, Eliahoo J, Kim JU, et al. Risk factors for intrahepatic and extrahepatic cholangiocarcinoma: a systematic review and meta-analysis. *J Hepatol*. 2020;72(1):95–103.
- Petrick JL, Yang B, Altekruse SF, et al. Risk factors for intrahepatic and extrahepatic cholangiocarcinoma in the United States: A population-based study in SEER-Medicare. *PLoS ONE*. 2017;12(10):e186643.
- Brindley PJ, Bachini M, Ilyas SI, et al. Cholangiocarcinoma. *Nat Rev Dis Primers*. 2021;7(1):65.
- Zhang H, Yang T, Wu M, Shen F. Intrahepatic cholangiocarcinoma: epidemiology, risk factors, diagnosis and surgical management. *Cancer Lett*. 2016;379(2):198–205.
- Peng NF, Li LQ, Qin X, et al. Evaluation of risk factors and clinicopathologic features for intrahepatic cholangiocarcinoma in Southern China: a possible role of hepatitis B virus. *Ann Surg Oncol*. 2011;18(5):1258–66.
- Zhou H, Wang H, Zhou D, et al. Hepatitis B virus-associated intrahepatic cholangiocarcinoma and hepatocellular carcinoma may hold common disease process for carcinogenesis. *Eur J Cancer*. 2010;46(6):1056–61.
- Tao LY, He XD, Qu Q, et al. Risk factors for intrahepatic and extrahepatic cholangiocarcinoma: a case-control study in China. *Liver Int*. 2010;30(2):215–21.

18. Shroff RT, Kennedy EB, Bachini M, et al. Adjuvant therapy for resected biliary tract cancer: ASCO clinical practice guideline. *J Clin Oncol*. 2019;37(12):1015–27.
19. Brada L, Daamen LA, Magermans LG, et al. Survival benefit associated with resection of locally advanced pancreatic cancer after upfront FOLFIRINOX versus FOLFIRINOX only: multicenter propensity score-matched analysis. *Ann Surg*. 2021;274(5):729–35.
20. Zhang XF, Chakedis J, Bagante F, et al. Implications of intrahepatic cholangiocarcinoma etiology on recurrence and prognosis after curative-intent resection: a multi-institutional study. *World J Surg*. 2018;42(3):849–57.
21. Wang Q, Li J, Lei Z, et al. Prognosis of intrahepatic cholangiocarcinomas with HBV infection is better than those with hepatolithiasis after R0 liver resection: a propensity score matching analysis. *Ann Surg Oncol*. 2017;24:1579–87.
22. Jeong S, Tong Y, Sha M, et al. Hepatitis B virus-associated intrahepatic cholangiocarcinoma: a malignancy of distinctive characteristics between hepatocellular carcinoma and intrahepatic cholangiocarcinoma. *Oncotarget*. 2017;8(10):17292–300.
23. Li M, Du M, Cong H, et al. Characterization of hepatitis B virus DNA integration patterns in intrahepatic cholangiocarcinoma. *Hepatol Res*. 2021;51(1):102–15.
24. Tian T, Song C, Jiang L, et al. Hepatitis B virus infection and the risk of cancer among the Chinese population. *Int J Cancer*. 2020;147(11):3075–84.
25. Ding FX, Wang F, Lu YM, et al. Multi-epitope peptide-loaded virus-like particles as a vaccine against hepatitis B virus-related hepatocellular carcinoma. *Hepatology*. 2009;49(5):1492–502.
26. Iida H, Kaibori M, Tanaka S, et al. Low Incidence of lymph node metastasis after resection of Hepatitis virus-related intrahepatic cholangiocarcinoma. *World J Surg*. 2017;41(4):1082–8.
27. Zhou HB, Wang H, Li YQ, et al. Hepatitis B virus infection: a favorable prognostic factor for intrahepatic cholangiocarcinoma after resection. *World J Gastroenterol*. 2011;17(10):1292–303.
28. Kim KM, Na JE, Shim SG, Sinn DH. Comparison of ICC patients with hepatitis B infection to those with no major risk factors for HCC. *HPB (Oxford)*. 2021;23(6):945–53.
29. Bridgewater J, Galle PR, Khan SA, et al. Guidelines for the diagnosis and management of intrahepatic cholangiocarcinoma. *J Hepatol*. 2014;60(6):1268–89.
30. Komuta M, Govaere O, Vandecaveye V, et al. Histological diversity in cholangiocellular carcinoma reflects the different cholangiocyte phenotypes. *Hepatology*. 2012;55(6):1876–88.
31. Williams TM, Majithia L, Wang SJ, Thomas CJ. Defining the role of adjuvant therapy: cholangiocarcinoma and gallbladder cancer. *Semin Radiat Oncol*. 2014;24(2):94–104.
32. Messina C, Merz V, Frisinghelli M, et al. Adjuvant chemotherapy in resected bile duct cancer: a systematic review and meta-analysis of randomized trials. *Crit Rev Oncol Hematol*. 2019;143:124–9.
33. Chang WW, Hsiao PK, Qin L, et al. Treatment outcomes for unresectable intrahepatic cholangiocarcinoma: nationwide, population-based, cohort study based on propensity score matching with the Mahalanobis metric. *Radiother Oncol*. 2018;129(2):284–92.
34. Wang L, Deng M, Ke Q, et al. Postoperative adjuvant therapy following radical resection for intrahepatic cholangiocarcinoma: a multicenter retrospective study. *Cancer Med*. 2020;9(8):2674–85.
35. Altman AM, Kizy S, Marmor S, et al. Adjuvant chemotherapy for intrahepatic cholangiocarcinoma: approaching clinical practice consensus? *Hepatobiliary Surg Nutr*. 2020;9(5):577–86.
36. Ke Q, Lin N, Deng M, et al. The effect of adjuvant therapy for patients with intrahepatic cholangiocarcinoma after surgical resection: a systematic review and meta-analysis. *PLoS One*. 2020;15(2):e229292.

Publisher's Note

Springer Nature remains neutral with regard to jurisdictional claims in published maps and institutional affiliations.

Ready to submit your research? Choose BMC and benefit from:

- fast, convenient online submission
- thorough peer review by experienced researchers in your field
- rapid publication on acceptance
- support for research data, including large and complex data types
- gold Open Access which fosters wider collaboration and increased citations
- maximum visibility for your research: over 100M website views per year

At BMC, research is always in progress.

Learn more biomedcentral.com/submissions

