

RESEARCH

Open Access



Grip strength from midlife as an indicator of later-life brain health and cognition: evidence from a British birth cohort

Quentin Dercon^{1*}, Jennifer M. Nicholas², Sarah-Naomi James³, Jonathan M. Schott⁴ and Marcus Richards³

Abstract

Background: Grip strength is an indicator of physical function with potential predictive value for health in ageing populations. We assessed whether trends in grip strength from midlife predicted later-life brain health and cognition.

Methods: 446 participants in an ongoing British birth cohort study, the National Survey of Health and Development (NSHD), had their maximum grip strength measured at ages 53, 60–64, and 69, and subsequently underwent neuroimaging as part of a neuroscience sub-study, referred to as “Insight 46”, at age 69–71. A group-based trajectory model identified latent groups of individuals in the whole NSHD cohort with below- or above-average grip strength over time, plus a reference group. Group assignment, plus standardised grip strength levels and change from midlife were each related to measures of whole-brain volume (WBV) and white matter hyperintensity volume (WMHV), plus several cognitive tests. Models were adjusted for sex, body size, head size (where appropriate), sociodemographics, and behavioural and vascular risk factors.

Results: Lower grip strength from midlife was associated with smaller WBV and lower matrix reasoning scores at age 69–71, with findings consistent between analysis of individual time points and analysis of trajectory groups. There was little evidence of an association between grip strength and other cognitive test scores. Although greater declines in grip strength showed a weak association with higher WMHV at age 69–71, trends in the opposite direction were seen at individual time points with higher grip strength at ages 60–64, and 69 associated with higher WMHV.

Conclusions: This study provides preliminary evidence that maximum grip strength may have value in predicting brain health. Future work should assess to what extent age-related declines in grip strength from midlife reflect concurrent changes in brain structure.

Keywords: Grip strength, Physical function, Brain volume, White matter hyperintensity volume, Nonverbal reasoning, Cognitive ageing

* Correspondence: quentin.dercon@mrc-cbu.cam.ac.uk

¹MRC Cognition and Brain Sciences Unit, University of Cambridge, Cambridge, United Kingdom

Full list of author information is available at the end of the article



© The Author(s). 2021, corrected publication 2021. **Open Access** This article is licensed under a Creative Commons Attribution 4.0 International License, which permits use, sharing, adaptation, distribution and reproduction in any medium or format, as long as you give appropriate credit to the original author(s) and the source, provide a link to the Creative Commons licence, and indicate if changes were made. The images or other third party material in this article are included in the article's Creative Commons licence, unless indicated otherwise in a credit line to the material. If material is not included in the article's Creative Commons licence and your intended use is not permitted by statutory regulation or exceeds the permitted use, you will need to obtain permission directly from the copyright holder. To view a copy of this licence, visit <http://creativecommons.org/licenses/by/4.0/>. The Creative Commons Public Domain Dedication waiver (<http://creativecommons.org/publicdomain/zero/1.0/>) applies to the data made available in this article, unless otherwise stated in a credit line to the data.

Background

Grip strength is an objective measure of upper limb strength and an indicator of overall physical function [1]. It changes with age, reaching a plateau around age thirty before beginning to decline after age fifty [2]. Men generally have higher maximum grip strength than women after controlling for body size [3], with a delayed but steeper decline later in life [2]. Growing evidence suggests that levels and changes in grip strength with age may reflect the capacity to specify and coordinate motor commands, and may be sensitive to subtle changes in brain health [4], leading some to argue that grip strength may have prognostic value in ageing populations [5, 6]. For example, grip strength has been linked to multiple negative outcomes including lower later-life physical capability [1], higher rates of later-life disability [7] and mortality [8, 9], and cognitive impairment [10], even when measured decades earlier in midlife [7, 8] (around 45 to 65 years of age [11]).

Studies investigating the extent to which grip strength is associated with cognitive function have mixed results. Systematic reviews have indicated some evidence for positive cross-sectional associations between grip strength and cognitive function, and for longitudinal associations between their rates of change [12], but only limited evidence for associations between grip strength and subsequent cognitive decline [13]. Although these discrepancies are partly due to heterogeneity in cohorts and measures, cognitive tests may be insensitive to subtle changes in neurological function. To overcome this issue, recent studies have examined neuroimaging-derived indices, such as whole-brain atrophy and white matter hyperintensity volume (WMHV), an index of presumed small vessel disease [14]. While declines in whole-brain volume (WBV) and increases in WMHV occur in healthy ageing [15, 16], both have been linked to negative health outcomes including dementia and cognitive decline [17, 18]. There is some cross-sectional evidence linking lower grip strength to increased WMHV [19] and lower WBV [20], though other studies have reported null findings [21].

This study builds on these findings using the National Survey of Health and Development (NSHD; the British 1946 birth cohort). Following an original sample of 5,362 men and women born in a single week in March 1946, the NSHD contains a wealth of life-course data including physical and cognitive measures [22]. In addition, 502 participants were selected for its neuroscience sub-study, Insight 46, which incorporated cognitive testing with MRI and PET neuroimaging at age 69–71 [23]. The present study assessed relationships between grip strength from midlife, and brain health and cognition at 69–71. We speculated that physical performance is influenced by concurrent neurological health, and

hypothesised that below-average trends in grip strength from midlife predict lower WBV and increased global WMHV, and below-average cognitive performance.

Methods

Participants

A total of 502 individuals from the NSHD were recruited for the Insight 46 neuroscience sub-study at age 69–71 [24]. Of these, 446 participants ($n = 218$ females; 48.9 %) had complete MRI data (WBV and global WMHV) plus complete data for at least one of the whole-cohort nurse visits at age 53 [25], 60–64 [26] or 69 [22] (see Figure S1 for an inclusion flow-chart).

Measures

Grip strength at 53, 60–64, and 69

Maximal grip strength was measured at each of the three nurse visits using a calibrated handgrip dynamometer, and defined as the maximum of four measures (two for each hand) [27]. Given known sex differences, including in this cohort [3], raw maximum grip strength (in kg) was converted to a within-sex z-score (mean subtracted and divided by the standard deviation (SD)), based on the measures from the whole study sample ($n = 2,850$ at 53; $n = 2,069$ at 60–64; $n = 2,103$ at 69).

Cognitive & neuroimaging outcomes at 69–71

Cognitive tests were administered as part of Insight 46 [23]. These included tests of associative memory (FNAME-12 [28]), episodic memory (Logical Memory IIa delayed recall [29]), psychomotor speed and executive function (DSST [30]), and cognitive impairment (MMSE [31]). Scores for each test were converted to z-scores based on all 502 Insight 46 participants [32], and the z-scores for each participant averaged to give a version of the Preclinical Alzheimer Cognitive Composite (PACC [33]). A test of matrix reasoning was also administered, which assesses nonverbal reasoning ability [34].

The neuroimaging metrics of interest, global WMHV (mL) and WBV (cm^3), were obtained from a single 60 min scan using a Biograph mMR 3T MRI/PET scanner (Siemens Healthcare, Erlangen, Germany). Scans were completed during the same visit as the cognitive tests for all but 58 of the 446 participants. WBV was derived from 3D T1-weighted MRI using an automated segmentation procedure [35] followed by manual checks and edits. Global WMHV, including subcortical grey matter but not infratentorial regions, was derived from multimodal MRI using an automated segmentation algorithm, BaMoS [36].

Covariates

Covariates were sex; age, height (in cm) and weight (in kg) at each nurse visit; adult Registrar General's socioeconomic

position (SEP) at 53 grouped into non-manual and manual; and education level defined as the highest educational qualification achieved by 26, categorised into no formal qualifications, secondary school leavers exams, or any degree.

Given known links between the neuroimaging metrics in this study and vascular risk factors [37], cardiovascular risk measures were included by deriving office-based Framingham Heart Survey cardiovascular disease (FHS-CVD) risk scores at each nurse visit [38]. Physical activity at each nurse visit was defined as the number of times participants reported taking part in activities requiring physical exertion in the prior four weeks, categorised into inactive (none), moderately active (1–4 times), or highly active (5+ times) [39]. This measure has been shown to be strongly associated with grip strength in this cohort [40]. In addition, a binary variable was derived to indicate whether participants showed evidence of a cognitive or neurological condition at age 69–71, as assessed by a structured clinical interview [23].

Additional covariates specific to neuroimaging were age at the scan and total intracranial volume (TIV) derived using an automated procedure from the SPM12 package for MatLab [41]. Additional covariates specific to cognitive outcomes were age at the Insight 46 visit, and childhood cognition measured as general cognitive ability at age 15 ($n = 414$), or at 11 ($n = 21$) or 8 ($n = 11$) if missing [42].

Statistical Analyses

Prior to statistical analyses, continuous variables not already z-scored (age, height, weight, and FHS-CVD risk score at each nurse visit) were mean-centred on the analytical sample. For height and weight, this was done separately in males and females. All statistical analyses were conducted using Stata 16.1 (StataCorp, College Station, TX).

Associations between grip strength levels and changes from age 53, with neuroimaging and cognition at age 69–71

Multivariable linear regression models were used to quantify associations between grip strength at 53, 60–64, and 69 and PACC, matrix reasoning, and WBV. Due to distributional skew, bias-corrected and accelerated (BCa) bootstrapping with 2,000 replications was used to obtain valid 95% confidence intervals (CIs) for associations with matrix reasoning, while gamma family generalised linear models (GLMs) with log link function were used to quantify corresponding associations with WMHV, in line with previous work in this cohort [32, 43]. The same approaches were used to relate each outcome to grip strength score change between 53 and 69. Since the z-scores were calculated at each study wave, a change of 0 between age 53 and 69 indicates an average level of decline, and positive values indicate above-average decline.

All models were adjusted for sex, age at the nurse visit(s) and the Insight 46 scan or visit, height, weight, sociodemographic factors, vascular and health risk factors, and presence of cognitive or neurological impairment at 69–71. In the models for change in grip strength, life-course covariates were from the baseline measure (age 53). All models with cognitive tests as the outcome also adjusted for childhood cognition; models for neuroimaging metrics also adjusted for TIV; and models for WMHV also adjusted for weight squared (in addition to weight) given evidence for a quadratic effect of weight from residual plots. A sex by grip strength interaction was also tested, with this term included if there was evidence for such an effect at $p < 0.1$; coefficients and CIs were then presented for each sex. Model fit was assessed for all models via residual plots.

Group-based trajectory modelling

Group-based trajectory modelling (GBTM) was used in an exploratory manner to identify groups of individuals following similar grip strength trajectories over time. GBTM identifies latent groups of individuals based on their patterns of responses, and models each group separately [44]. Notably, as GBTM can handle missing data, all individuals in the whole NSHD sample with at least one grip strength measure at age 53, 60–64 or 69 ($n = 3078$) were included in the model. Posterior probabilities of group membership were calculated for each individual for each group; the maximum of these was used to classify each participant into their most likely group. Models with increasing numbers of groups were fitted, and in line with recommendations [45], the optimal number of groups was identified using the Bayesian Information Criterion (BIC) and the mean posterior probability of membership in each group among those assigned that group (a metric of classification ambiguity [46]). Group assignment was then related to each of the outcomes, with the largest group taken as the reference. These models adjusted for the same covariates as those relating change in grip strength from midlife to the outcomes, except that they excluded age at the time of the nurse visits (as this was included in the GBTM). See Supplementary Data Sec. 1 for further details.

Results

In the 446 participants, maximum grip strength fell from an average of 47.2 kg (SD = 12.7; $n = 211$) at age 53, to an average of 41.2 kg (SD = 8.3; $n = 217$) at age 69 in men, and from an average of 29.5 kg (SD = 7.9; $n = 205$) at age 53 to an average of 24.7 kg (SD = 5.5; $n = 205$) at age 69 in women (Fig. 1A). The average decline from age 53 to 69 was 5.6 kg (SD = 11.8; $n = 200$) in men, and 5.0 kg (SD = 7.6; $n = 193$) in women. Summary statistics for grip strength and all covariates are presented in

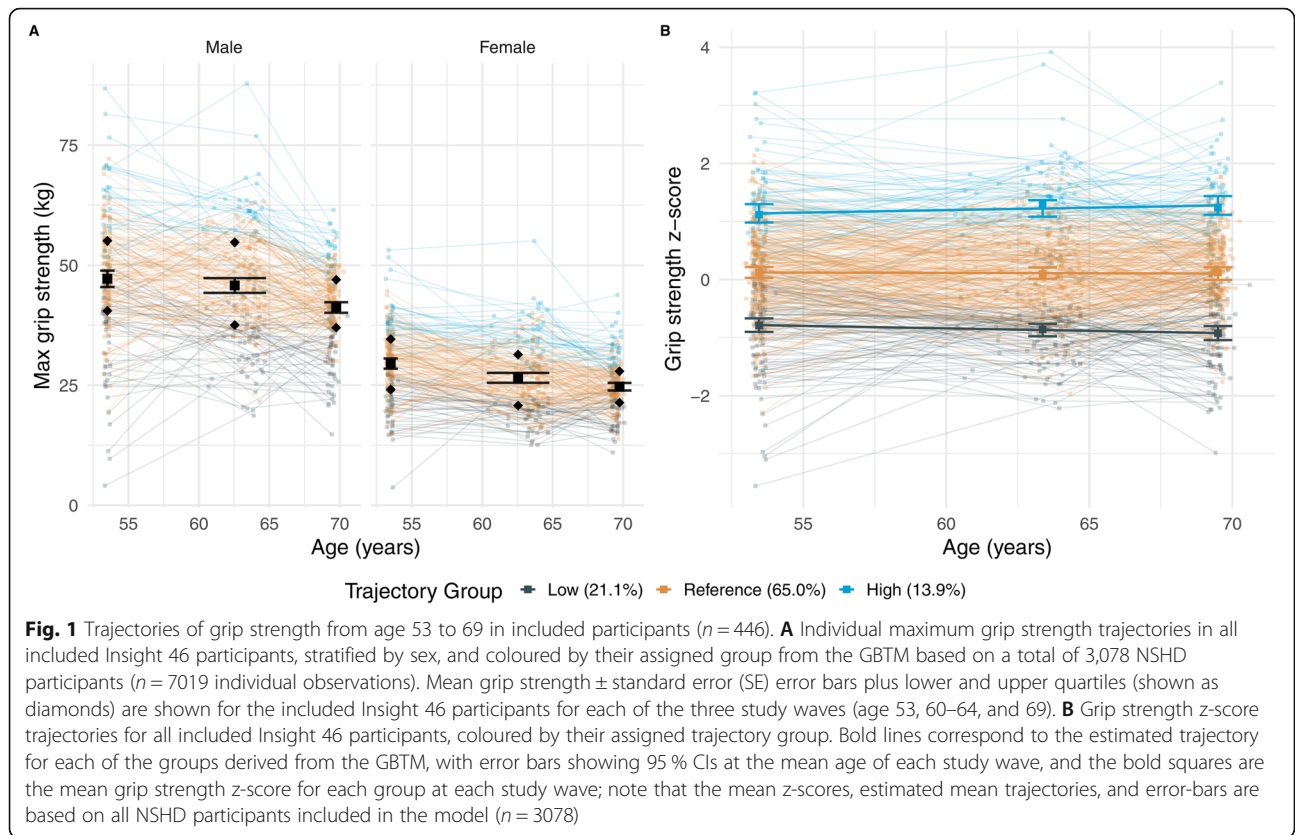


Table 1 (by sex where relevant), alongside those for all others in the whole NSHD sample with complete records at each time point. As the raw grip strength measures were converted to within-sex z-scores, all results are given as the effect of a 1 SD increase in maximum grip strength on each of the outcomes.

Associations between grip strength levels and changes from age 53, and neuroimaging and cognition at age 69–71

Higher grip strength at age 53, 60–64, and 69 was associated with increased WBV adjusting for sex, body size, TIV, sociodemographics, and behavioural and health risk factors (Table 2; Fig. 2A). At age 53, there was weak evidence for a sex by grip strength interaction ($p = 0.075$): a 1 standard deviation (SD) increase in maximum grip strength in females was associated with 7.95cm^3 increased WBV up to 17 years later (95% CI=(1.61, 14.30)) but little effect was seen in males (0.10cm^3 increase, 95% CI=(-5.91, 6.10)).

At later study waves, there was limited evidence for a sex difference, with 1 SD increases in maximum grip strength at age 60–64 and 69 predicting an estimated 5.89cm^3 (95% CI=(1.56, 10.82)) and 5.59cm^3 (95% CI=(0.90, 10.29)) higher WBV at age 69–71 respectively. In line with these results, there was also a trend suggesting that faster decline in grip strength between 53 and 69

was associated with lower WBV in males ($p = 0.029$ for sex by grip strength interaction) but the trend was in the opposite direction for females, albeit even weaker (Table 2).

The associations of grip strength with WMHV were less consistent (Fig. 2B). Unexpectedly, there was some evidence that increased grip strength at age 53 and 60–64 (but not 69) was associated with 10–12% higher WMHV at age 69–71 (GLM coefficients 1.10 and 1.12 respectively) in adjusted models. In contrast, 1 SD greater decline in maximum grip strength between 53 and 69 was associated with an 10% increase in WMHV at age 69–71 (coefficient = 1.10; 95% CI=(1.00, 1.22)) after adjustment. However, the statistical evidence for these effects was fairly weak (Table 2).

For cognitive outcomes, there was a consistent trend that higher grip strength was associated with higher scores in matrix reasoning at 69–71 adjusting for sex, body size, childhood cognition, sociodemographics, and behavioural and health risk factors (Fig. 2D). The strongest evidence for this was at age 60–64 where a 1 SD increase in maximum grip strength was associated with a 0.12 increase in matrix reasoning score (BCa bootstrapped 95% CI=(0.04, 0.21)); the evidence for effects at age 53 (coefficient = 0.07, 95% CI=(-0.01, 0.16)) and age 69 (coefficient = 0.06, 95% CI=(-0.05, 0.15)) was weaker. There was limited evidence of associations between grip

Table 1 Participant characteristics comparing included Insight 46 participants and all other NSHD participants with complete records

	Age 53 (omitted)	Age 53 (included)	p-value	Age 60-64 (omitted)	Age 60-64 (included)	p-value	Age 69 (omitted)	Age 69 (included)	p-value
No. with complete records									
	M: 962 (49.0)	211 (50.7)	0.53	599 (48.0)	208 (51.2)	0.25	681 (48.5)	217 (51.4)	0.30
	F: 1000 (51.0)	205 (49.3)		649 (52.0)	198 (48.8)		722 (51.5)	205 (48.6)	
Age, years									
	M: 53.5 (0.2)	53.4 (0.2)	0.12	63.2 (1.2)	63.4 (1.0)	0.10	69.5 (0.2)	69.5 (0.2)	0.02
	F: 53.5 (0.2)	53.4 (0.2)	0.01	63.4 (1.1)	63.3 (1.1)	0.54	69.5 (0.2)	69.5 (0.2)	0.09
Physical performance									
Max grip strength (kg)									
	M: 47.8 (12.0)	47.2 (12.7)	0.62	44.5 (11.7)	45.8 (11.3)	0.15	39.9 (8.6)	41.2 (8.3)	0.04
	F: 27.5 (7.9)	29.5 (7.7)	<0.001	26.2 (7.4)	26.5 (7.4)	0.60	24.0 (5.9)	24.7 (5.5)	0.12
Body size									
Height (cm)									
	M: 174.6 (6.5)	175.1 (6.1)	0.25	174.7 (6.6)	175.5 (5.9)	0.13	173.8 (6.4)	174.1 (6.2)	0.56
	F: 161.6 (5.9)	162.2 (5.6)	0.14	161.7 (5.9)	162.2 (5.4)	0.37	160.4 (5.9)	161.1 (5.5)	0.12
Weight (kg)									
	M: 83.4 (13.8)	83.1 (11.3)	0.77	85.6 (13.7)	84.7 (11.9)	0.42	83.8 (12.0)	83.8 (12.0)	0.12
	F: 71.4 (14.2)	69.9 (12.2)	0.17	73.5 (15.4)	71.7 (12.8)	0.14	70.3 (13.1)	70.3 (13.1)	0.02
Sociodemographics; N (%)									
Adult SEP									
	Manual	64 (15.4)	<0.001	398 (31.9)	67 (16.5)	<0.001	451 (31.1)	62 (14.7)	<0.001
	Non-manual	352 (84.6)		850 (68.1)	339 (83.5)		952 (67.9)	360 (85.3)	
Education level (at 26)									
	No formal	135 (32.4)	<0.001	668 (53.5)	127 (31.3)	<0.001	782 (55.7)	133 (31.5)	<0.001
	School exams	671 (34.2)		474 (38.0)	207 (51.0)		513 (36.6)	218 (51.7)	
	Degree+	139 (7.1)		106 (8.5)	72 (17.7)		108 (7.7)	71 (16.8)	
Behavioural and health risk factors									
Physical activity (last 4 weeks); N (%)									
	None	130 (31.2)	<0.001	827 (66.3)	208 (51.2)	<0.001	863 (61.5)	185 (43.8)	<0.001
	1-4 times	93 (22.4)		156 (12.5)	79 (19.5)		183 (13.0)	62 (14.7)	
	5+ times	193 (46.4)		265 (21.2)	119 (29.3)		357 (25.5)	175 (41.5)	
FHS-CVD risk score									
	11.1 (3.2)	9.8 (2.7)	<0.001	14.3 (3.2)	13.5 (2.9)	<0.001	15.7 (3.2)	15.1 (3.0)	<0.001
Baseline cognition									
Childhood cognitive ability (z-score)									
	0.1 (0.9)	0.6 (0.8)	<0.001	0.1 (0.9)	0.6 (0.8)	<0.001	0.1 (0.9)	0.6 (0.8)	<0.001

* Occupation at age 53 or imputed from earlier in life if missing

† Office-based FHS-CVD risk scores were calculated for each participant as per the supplementary tables in D'Agostino et al. (2008) based on their age, sex, body mass index (BMI), systolic blood pressure (SBP), medicated or unmedicated, diabetes status, and smoking status

‡ General cognitive ability was tested at age 15, age 11, and/or age 8, and standardised based on all study participants at each age

§ 'Omitted' refers to those in the whole NSHD with complete records at each study wave who were not included in the analysis of cognitive and neuroimaging outcomes; 'included' refers to those in the present study (total n = 446). Continuous measures are given as mean (SD) to 1 decimal place (d.p.), and categorical variables are given as number (%). P-values are from chi-squared tests for categorical variables, and two-tailed t-tests for continuous variables

Table 2 Associations between grip strength levels/changes from midlife and brain health and cognitive measures at 69–71

		Max grip at 53 (n = 416)	Max grip at 60-64 (n = 406)	Max grip at 69 (n = 422)	Change in grip from 53 to 69 (n = 393)
Brain health measures					
WBV (cm ³)	M:	0.10 (-5.91, 6.10)	5.89* (1.22, 10.56)	5.59* (0.90, 10.29)	-5.72 (-11.76, 0.32)
	F:	7.95* (1.61, 14.30)			3.15 (-2.84, 9.14)
Global WMHV (mL)		1.10 (1.00, 1.21)	1.12 (1.00, 1.25)	1.04 (0.93, 1.16)	1.10 (1.00, 1.22)
Cognitive measures					
PACC (z-score)		0.02 (-0.04, 0.08)	-0.02 (-0.09, 0.04)	-0.06 (-0.13, 0.00)	0.05 (-0.01, 0.11)
Matrix reasoning (z-score)†		0.07 (-0.01, 0.16)	0.12† (0.04, 0.21)	0.06 (-0.05, 0.15)	-0.02 (-0.07, 0.10)

* p < 0.05

† BCa bootstrap 95% CI does not contain 0

‡ 95% CIs obtained from BCa bootstrap with 2,000 replicates

Coefficients (95% CIs) are derived from multivariable linear regression models or GLMs and represent the effect of a one z-score increase in grip strength on mean WBV (cm³), mean z-score (cognitive measures) or the multiplicative effect for WMHV (as this is the exponentiated coefficient from the GLM). Z-scores for maximum grip strength were calculated based on the whole NSHD cohort at each nurse visit; z-scores for cognitive tests were calculated based on all 502 Insight 46 participants. Models for levels included those with complete records at that age, models for changes included those with complete records at both age 53 and 69; all 446 participants were hence included in analyses for at least one time point. Decline was calculated as initial grip strength minus final z-score, so coefficients represent the estimated change in the outcome measure (or multiplier for WMHV) for a unit decline in z-score. All models were adjusted for sex, age at scan/visit and nurse visit, body size (weight and height at nurse visit), sociodemographic factors (adult SEP and education level), and sociodemographic, behavioural and health risk factors (physical activity and vascular risk score at nurse visit), plus a binary indicator of cognitive or neurological impairment at 69-71. Models for brain measures additionally controlled for TIV; models for cognitive measures additionally controlled for childhood cognitive ability; and models for WMHV at 53 were additionally adjusted for weight squared. Values given to 2 d.p.

strength and PACC score, or that increased declines in grip strength score from midlife were associated with either of the cognitive metrics, and no interactions with sex were seen for these measures (Table 2; Fig. 2C-D).

Associations between GTBM group classification (based on grip strength trajectory between 53 and 69) and neuroimaging and cognition at 69–71

A three-group model was chosen as the best compromise between fit, classification ambiguity, and complexity

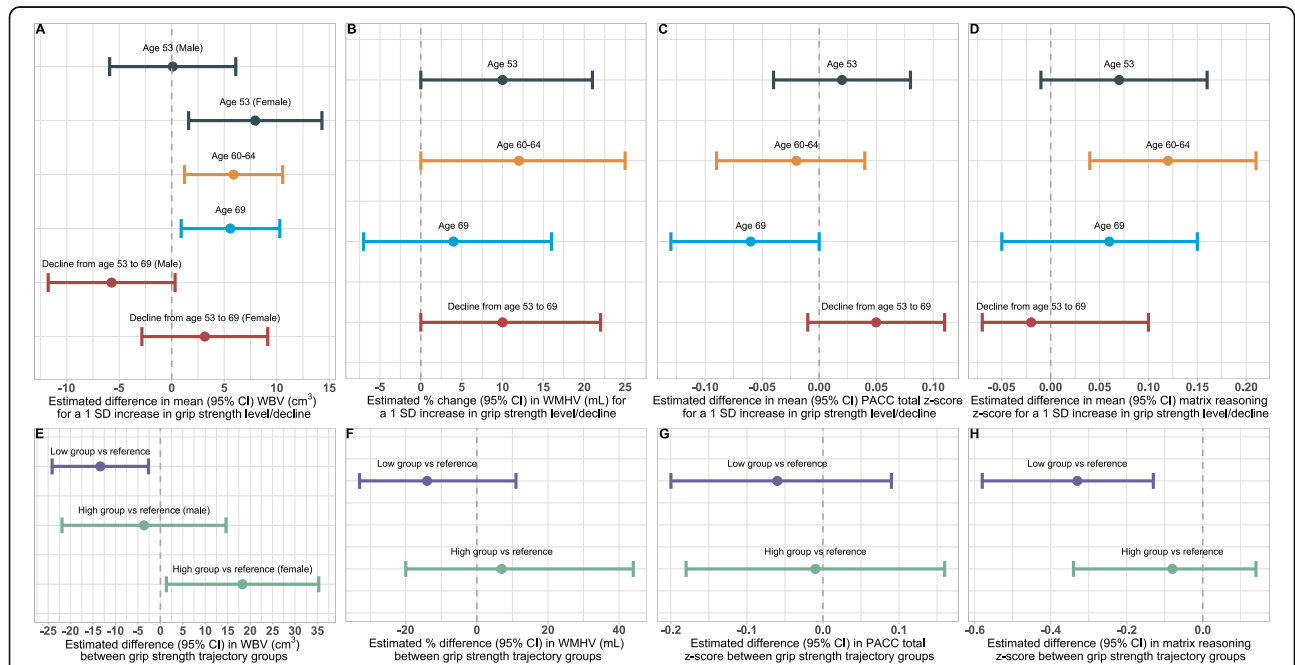


Fig. 2 Associations between grip strength from midlife and brain health and cognitive measures at age 69–71. Estimated change (95% CI) in each of the brain health and cognitive outcomes at age 69–71 for a one z-score increase in levels or declines in maximum grip strength from age 53 to 69 (A–D) or for membership of the low or high grip strength trajectory groups (compared to reference individuals) (E–H), derived from fully adjusted linear regression models or GLMs

(Supplementary Data Sec. 1.3). The groups can be interpreted as a consistent below-average trend ($n = 733$; 23.8%), above-average trend ($n = 283$; 9.2%), and an average trend ($n = 2062$; 67.0%; reference category). Compared to the whole NSHD sample, a slightly lower proportion of the Insight 46 participants were classified with a low trend (21.1%; $n = 94$), and a higher proportion classified with a high trend (13.9%; $n = 62$), with a similar proportion of reference individuals (65.0%; $n = 290$). The trajectories and assignments for these individuals are presented in Fig. 1B. The analysis of the relationship with each of the neuroimaging and cognitive outcomes included 428 participants with complete data on covariates at age 53.

The relationship between grip strength trajectory group and outcomes was largely consistent with earlier results (Table 3; Fig. 2E-H). In particular, there was reasonably strong evidence that below-average group membership was associated with an estimated 13.38cm³ lower WBV at age 69–71 (95% CI=(-24.12, -2.64)) compared to reference group individuals, adjusting for sex, body size, TIV, sociodemographics, and behavioural and health risk factors (Fig. 2E). In addition, there was some evidence of a complementary trend where women in the above-average group had higher whole-brain volume at 69–71, estimated at 18.30cm³ (95% CI=(1.34, 35.26); $n = 34$ high group female participants) compared to the reference group, after adjusting for all covariates, although a similar association was not seen in men (interaction $p = 0.08$).

In line with earlier results, consistently below-average grip strength was also associated with lower non-verbal reasoning: an estimated 0.33 lower matrix reasoning score compared to the reference group (BCa bootstrapped 95% CI=(-0.58, -0.13); Fig. 2H). However, there was no statistical evidence for a positive effect of above-

average grip strength on nonverbal reasoning, nor was there any evidence of any association or trends between PACC score or WMHV and the below- or above-average trajectory groups (Fig. 2F-G). Models relating a unit increase (from 0 to 1) in posterior probability of low or high group membership to the outcomes identified similar trends (Table S3).

Discussion

In a 446 participant sub-sample from the British 1946 birth cohort, we found converging evidence that below-average grip strength from age 53 was modestly associated with lower whole-brain volume (WBV) at age 69–71. Conversely, above-average grip strength was associated with higher WBV, which was more pronounced in females. For white matter hyperintensity volume (WMHV) the findings were less consistent. Lower grip strength from age 53 was associated with lower WMHV but above-average declines in grip strength were associated with increased WMHV. Lastly, lower grip strength was consistently associated with lower nonverbal (matrix) reasoning scores, a measure of fluid cognition. All results were independent of body size, physical activity, and sociodemographic, vascular and health risk factors, plus head size (neuroimaging measures) or childhood cognition (cognitive measures).

Consistent with our findings, previous studies have generally found that higher levels of objective physical function measures, including grip strength, are cross-sectionally associated with higher WBV [20, 47], and fluid reasoning ability [13, 48]. Consistently above-average grip strength was also associated with higher WBV in women, which may reflect sex differences in the rate of age-related cortical atrophy [49], though given that maximum grip strength at age 60–64 and 69 was positively associated with WBV independently of sex, it

Table 3 Associations between grip strength trajectory group membership and brain health and cognitive measures at 69–71

	Group membership (vs reference, $n = 275$)	
	Low ($n = 93$)	High ($n = 60$)
Brain health measures		
WBV (cm ³)	-13.38* (-24.12, -2.64)	M: -3.65 (-21.92, 14.62) F: 18.30* (1.34, 35.29)
Global WMHV (mL)	0.86 (0.67, 1.11)	1.07 (0.80, 1.44)
Cognitive measures		
PACC (z-score)	-0.06 (-0.20, 0.09)	-0.01 (-0.18, 0.16)
Matrix reasoning (z-score)†	-0.33† (-0.58, -0.13)	-0.08 (-0.34, 0.14)

* $p < 0.05$

† BCa bootstrap 95% CI does not contain 0

‡ 95% CIs obtained from BCa bootstrap with 2,000 replicates

Coefficients (95% CIs) are derived from multivariable linear regression models or GLMs and give the estimated mean difference between the low or high group versus the reference group for WBV and the multiplicative difference between low or high group versus the reference group for WMHV. All models included 428 participants with complete baseline covariates (age 53), and were adjusted for sex, age at scan/visit, height, weight, physical activity, and vascular risk score at age 53, adult SEP, education, and a binary indicator of cognitive or neurological impairment at age 69–71. Additional adjustments were for weight squared (WMHV), TIV (brain measures), and childhood cognitive ability (cognitive measures). Values given to 2 d.p.

may be that this effect was more pronounced in women in this sample by chance (see also Supplementary Data Sec. 2.1).

Higher grip strength was weakly associated with increases in global WMHV, which is at odds with previous work [21]. That said, there was no evidence that individuals with below- or above-average grip strength from midlife differed in WMHV compared to those with average trajectories; nor any evidence of a positive association between grip strength at age 69 and WMHV. However, above-average decline in grip strength was weakly associated with higher WMHV, which is consistent with studies reporting longitudinal associations between declines in other physical function measures (e.g., gait speed, chair rises) and increased WMHV [50–52]. Studies are needed in other cohorts across a range of ages to examine this discrepancy.

Maximum grip strength is positively associated with primary motor cortex volumes and cerebellar volume in older adults [53]. Given that changes in cerebellar morphology are associated with age-related motor and cognitive decline [54], differences in WBV may reflect structural changes in regions involved in motor control and coordination [55]. Such changes may result from broader alterations, for example to neuromodulation [56], which may in turn be associated with cellular (e.g., inflammatory) pathways common to both physical and cognitive decline [57]. More work is needed to characterise these pathways and associated biomarkers, in particular to understand age and sex differences in the effect of risk factors on grip strength declines [58] and how this may relate to brain structure and cognitive ageing.

Furthermore, while we lack the baseline imaging metrics to confirm this, lower WBV and higher WMHV may indicate an increased rate of brain atrophy and accelerated white matter lesion accumulation, respectively, given that both occur in healthy ageing [15]. Increased global WMHV and whole-brain atrophy are known markers of cerebral small vessel disease [14, 59], which in turn is predictive of dementia, stroke, and mortality [18]. Future work should monitor the cohort to assess the extent to which associations between indicators of physical function and markers of brain health relate to clinical outcomes such as stroke and dementia.

This study has several strengths, including the large sample of narrow age range, and measures of grip strength up to 17 year prior to cognitive tests and sensitive neuroimaging metrics. We were also able to control for numerous life-course covariates in all models, and analyses with cognitive outcomes additionally adjusted for childhood cognition, which is notable since childhood cognitive ability is highly predictive of scores decades later [32]. In addition, we used a statistical model

to identify groups of individuals with similar grip strength trajectories, rather than the subjective methods that have been used previously to classify objective physical function in this cohort [42, 60].

There are also several limitations to the present work. Firstly, though the NSHD is representative of the British-born population at the time, it is ethnically homogeneous. Secondly, the Insight 46 subsample have a higher SEP, are more educated, active, and generally healthier than the main NSHD sample. This may mean associations in the subsample are underestimates [24]. Though we were able to partially account for this by fitting the GBTM on the whole NSHD sample ($n = 3078$), this method has associated limitations (Supplementary Data Sec. 1.4), and should be considered a tool to describe patterns of trends rather than a means to identify distinct developmental trajectories [44]. Lastly, while we were able to adjust for self-reported physical activity in all models, this measure is unlikely to completely capture variation in cardiorespiratory fitness.

Conclusions

Taken together, we have shown in a sample of individuals from a British birth cohort that below- or above-average trends in maximum grip strength from midlife are relatively consistent predictors of later-life whole-brain volumes and nonverbal reasoning, and that above-average decline in grip strength may also modestly predict increased global white-matter hyperintensity volumes. These results provide preliminary evidence for the potential utility of grip strength in monitoring cognitive and neurological function, as suggested by several recent reviews [4–6]. Given that tests of grip strength are quick, non-invasive, and relatively inexpensive, one could envision their future use in primary care, in combination with normative population measures [61], to provide insights into brain structure [6], and to help assess the risks of associated clinical manifestations such as stroke and dementia [20]. We suggest that current and future longitudinal cohort studies include measures of objective physical function from an earlier age, to better understand their temporal dynamics in younger cohorts, to assess whether there exist groups of individuals following distinct developmental trajectories, and to investigate to what extent such trajectories relate to structural and functional changes in the brain.

Abbreviations

BCa: Bias-Corrected and accelerated; BIC: Bayesian Information Criterion; BMI: Body Mass Index; CI: Confidence Interval; CVD: Cardiovascular Disease; DSST: Digit Symbol Substitution Test; FHS: Framingham Heart Study; FNAME-12: 12-item Face-Name test; GBTM: Group-Based Trajectory Modelling; GLM: Generalised Linear Model; MRC: Medical Research Council; MRI: Magnetic Resonance Imaging; MMSE: Mini-Mental State Exam; NSHD: National Survey of Health and Development; PACCC: Preclinical

Alzheimer Cognitive Composite; PET: Positron Emission Tomography; SD: Standard Deviation; SE: Standard Error; SEP: Socio-Economic Position; SPM: Statistical Parametric Mapping; TIV: Total Intracranial Volume; WASI: Wechsler Abbreviated Scale of Intelligence; WBV: Whole-Brain Volume; WMHV: White Matter Hyperintensity Volume

Supplementary Information

The online version contains supplementary material available at <https://doi.org/10.1186/s12877-021-02411-7>.

Additional file 1. Inclusion flow-chart (Figure S1), additional information on group-based trajectory modelling (GBTM) including rationale (Sec. 1.2), model selection (Sec. 1.3; Table S1–S2), and limitations (Sec. 1.4), plus additional data (Sec. 2) from models relating increases in posterior probability of membership of the low or high trajectory group to each of the outcomes (Table S3), and models relating group assignment from a GBTM fitted only on included participants (Figure S2) to the outcomes (Table S4).

Acknowledgements

The authors thank the NSHD study members for their lifelong participation, and past and present members of the NSHD study team who helped to collect the data. The authors also acknowledge the support of the Insight 46 study team. A version of the abstract was presented at the British Geriatrics Society (BGS) Spring Meeting 2021 as part of the President's Round and published online (<https://doi.org/10.1093/ageing/afab118.04>).

Authors' contributions

JMN and SNJ conceived the study. QD analysed the data with assistance from JMN, prepared the figures, and drafted the initial version of the manuscript. MR, SNJ, JMS, and JMN critically revised and edited the manuscript. All authors reviewed and approved the final version.

Funding

QD is supported by the UK Medical Research Council (MRC; SUAG/043/G101400) and the AXA Research Fund (G102329). MR and SNJ are supported by the UK MRC, which provides core funding for the NSHD, and supports the authors by MC_UU_12019/1 (Enhancing NSHD) and MC_UU_12019/3 (Mental Ageing). SNJ is additionally supported by Alzheimer's Research UK (ARUK-PG2014-1946, ARUK-PG2017-1946). Insight 46 is principally funded by grants from Alzheimer's Research UK (ARUK-PG2014-1946, ARUK-PG2017-1946), the Medical Research Council Dementias Platform UK (CSUB19166), and the Wolfson Foundation (PR/ylr/18575). Flortetapir amyloid tracer used in Insight 46 is kindly provided by Avid Radiopharmaceuticals (a wholly owned subsidiary of Eli Lilly), but they had no role in the design and conduct of the study. JMS acknowledges the support of the National Institute for Health Research University College London Hospitals Biomedical Research Centre and the Alzheimer's Association (SG-666374). The funders had no role in the study or the decision to submit this paper for publication.

Availability of data and materials

Data used in this publication (<https://doi.org/10.5522/NSHD/Q101>; <https://doi.org/10.5522/NSHD/Q102>; <https://doi.org/10.5522/NSHD/Q103>) are available to bona fide researchers upon request to the NSHD Data Sharing Committee via a standard application procedure. Further details can be found at <http://www.nshd.mrc.ac.uk/data>.

Declarations

Ethics approval and consent to participate

Ethics approval was obtained for each of the National Survey of Health and Development (NSHD) study waves and the Insight 46 neuroscience sub-study: 1999 NSHD postal questionnaire and nurse visit (North Thames Multi-Centre Research Ethics Committee (REC)); 2006–2010 NSHD postal questionnaire and nurse visit (Central Manchester REC (07/H1008/168) and the Scottish A REC); 2015 NSHD postal questionnaire and nurse visit (National Research Ethics Service (NRES) Queen Square REC (14/LO/1073) and Scotland A REC (14/SS/1009)); Insight 46 neuroscience sub-study (NRES Committee London (14/LO/1174)). All participants gave written informed consent to

participate in each NSHD study wave [22, 25, 26] and the Insight 46 neuroscience sub-study [24].

Consent for publication

Not applicable.

Competing interests

The authors declare they have no competing interests.

Author details

¹MRC Cognition and Brain Sciences Unit, University of Cambridge, Cambridge, United Kingdom. ²Department of Medical Statistics, London School of Hygiene & Tropical Medicine, London, United Kingdom. ³MRC Unit for Lifelong Health and Ageing at UCL, University College London, London, United Kingdom. ⁴Dementia Research Centre, UCL Queen Square Institute of Neurology, University College London, London, United Kingdom.

Received: 4 June 2021 Accepted: 10 August 2021

Published online: 31 August 2021

References

- Cooper R, Kuh D, Cooper C, Gale CR, Lawlor DA, Matthews F, et al. Objective measures of physical capability and subsequent health: A systematic review. *Age Ageing*. 2011;40:14–23. <https://doi.org/10.1093/ageing/afq117>.
- Nahhas RW, Choh AC, Lee M, Cameron Chumlea WM, Duren DL, Siervogel RM, et al. Bayesian longitudinal plateau model of adult grip strength. *Am J Hum Biol*. 2010;22:648–56. <https://doi.org/10.1002/ajhb.21057>.
- Cooper R, Hardy R, Sayer A, Ben-Shlomo Y, Birnie K, Cooper C, et al. Age and gender differences in physical capability levels from mid-life onwards: The harmonisation and meta-analysis of data from eight UK cohort studies. *PLoS One*. 2011;6. <https://doi.org/10.1371/journal.pone.0027899>.
- Carson RG. Get a grip: individual variations in grip strength are a marker of brain health. *Neurobiol Aging*. 2018;71:189–222.
- Rijk JM, Roos PRKM, Deckx L, Van den Akker M, Buntinx F. Prognostic value of handgrip strength in people aged 60 years and older: A systematic review and meta-analysis. *Geriatr Gerontol Int*. 2016;16:5–20. <https://doi.org/10.1111/ggi.12508>.
- Fritz NE, McCarthy CJ, Adamo DE. Handgrip strength as a means of monitoring progression of cognitive decline – A scoping review. *Ageing Res Rev*. 2017;35:112–23.
- Rantanen T, Guralnik JM, Foley D, Masaki K, Leveille S, Curb JD, et al. Midlife hand grip strength as a predictor of old age disability. *J Am Med Assoc*. 1999;281:558–60. <https://doi.org/10.1001/jama.281.6.558>.
- Cooper R, Strand BH, Hardy R, V Patel K, Kuh D. Physical capability in mid-life and survival over 13 years of follow-up: British birth cohort study. *BMJ*. 2014;348. <https://doi.org/10.1136/bmj.g2219>.
- Cooper R, Kuh D, Hardy R. Objectively measured physical capability levels and mortality: Systematic review and meta-analysis. *BMJ*. 2010;341:639. <https://doi.org/10.1136/bmj.c4467>.
- McGrath R, Robinson-Lane SG, Cook S, Clark BC, Herrmann S, O'connor ML, et al. Handgrip Strength Is Associated with Poorer Cognitive Functioning in Aging Americans. *J Alzheimer's Dis*. 2019;70:1187–96.
- Livingston G, Huntley J, Sommerlad A, Ames D, Ballard C, Banerjee S, et al. Dementia prevention, intervention, and care: 2020 report of the Lancet Commission. *Lancet*. 2020;396:413–46. [https://doi.org/10.1016/S0140-6736\(20\)30367-6](https://doi.org/10.1016/S0140-6736(20)30367-6).
- Zammit AR, Piccinin AM, Duggan EC, Koval A, Clouston S, Robitaille A, et al. A Coordinated Multi-study Analysis of the Longitudinal Association Between Handgrip Strength and Cognitive Function in Older Adults. *J Gerontol Ser B Psychol Sci Soc Sci*. 2021;76:229–41. <https://doi.org/10.1093/geronb/gbz072>.
- Clouston SAP, Brewster P, Kuh D, Richards M, Cooper R, Hardy R, et al. The dynamic relationship between physical function and cognition in longitudinal aging cohorts. *Epidemiol Rev*. 2013;35:33–50. <https://doi.org/10.1093/epirev/mxs004>.
- Gouw AA, Seewann A, Van Der Flier WM, Barkhof F, Rozemuller AM, Scheltens P, et al. Heterogeneity of small vessel disease: A systematic review of MRI and histopathology correlations. *J Neurol Neurosurg Psychiatry*. 2011; 82:126–35. <https://doi.org/10.1136/jnnp.2009.204685>.
- Schmidt R, Ropele S, Enzinger C, Petrovic K, Smith S, Schmidt H, et al. White matter lesion progression, brain atrophy, and cognitive decline: The

- Austrian stroke prevention study. *Ann Neurol*. 2005;58:610–6. <https://doi.org/10.1002/ana.20630>.
16. Scahill RI, Frost C, Jenkins R, Whitwell JL, Rossor MN, Fox NC. A longitudinal study of brain volume changes in normal aging using serial registered magnetic resonance imaging. *Arch Neurol*. 2003;60:989–94. <https://doi.org/10.1001/archneur.60.7.989>.
 17. Vermeer SE, Prins ND, Den Heijer T, Hofman A, Koudstaal PJ, Breteler MMB. Silent brain infarcts and the risk of dementia and cognitive decline. *N Engl J Med*. 2003;348:1215–22. <https://doi.org/10.1056/NEJMoa022066>.
 18. DeBette S, Markus HS. The clinical importance of white matter hyperintensities on brain magnetic resonance imaging: Systematic review and meta-analysis. *BMJ*. 2010;341:288. <https://doi.org/10.1136/bmj.c3666>.
 19. Firth JA, Smith L, Sarris J, Vancampfort D, Schuch F, Carvalho AF, et al. Handgrip strength is associated with hippocampal volume and white matter hyperintensities in major depression and healthy controls: A UK biobank study. *Psychosom Med*. 2020;82:39–46. <https://doi.org/10.1097/PSY.0000000000000753>.
 20. Camargo EC, Weinstein G, Beiser AS, Tan ZS, Decarli C, Kelly-Hayes M, et al. Association of Physical Function with Clinical and Subclinical Brain Disease: The Framingham Offspring Study. *J Alzheimer's Dis*. 2016;53:1597–608. <https://doi.org/10.3233/JAD-160229>.
 21. Kilgour AH, Todd OM, Starr JM. A systematic review of the evidence that brain structure is related to muscle structure and their relationship to brain and muscle function in humans over the lifecourse. *BMC Geriatr*. 2014;14. <https://doi.org/10.1186/1471-2318-14-85>.
 22. Kuh D, Wong A, Shah I, Moore A, Popham M, Curran P, et al. The MRC National Survey of Health and Development reaches age 70: maintaining participation at older ages in a birth cohort study. *Eur J Epidemiol*. 2016;31:1135–47. <https://doi.org/10.1007/s10654-016-0217-8>.
 23. Lane CA, Parker TD, Cash DM, Macpherson K, Donnachie E, Murray-Smith H, et al. Study protocol: Insight 46 - a neuroscience sub-study of the MRC National Survey of Health and Development. *BMC Neurol*. 2017;17:75. <https://doi.org/10.1186/s12883-017-0846-x>.
 24. James SN, Lane CA, Parker TD, Lu K, Collins JD, Murray-Smith H, et al. Using a birth cohort to study brain health and preclinical dementia: Recruitment and participation rates in Insight 46. *BMC Res Notes*. 2018;11. <https://doi.org/10.1186/s13104-018-3995-0>.
 25. Wadsworth M, Kuh D, Richards M, Hardy R. Cohort profile. The 1946 National Birth Cohort (MRC National Survey of Health and Development). *Int J Epidemiol*. 2006;35:49–54.
 26. Kuh D, Pierce M, Adams J, Deanfield J, Ekelund U, Friberg P, et al. Cohort Profile: Updating the cohort profile for the MRC National Survey of Health and Development: A new clinic-based data collection for ageing research. *Int J Epidemiol*. 2011;40:e1–9.
 27. Kuh D, Bassey EJ, Butterworth S, Hardy R, Wadsworth MEJ. Grip strength, postural control, and functional leg power in a representative cohort of British men and women: Associations with physical activity, health status, and socioeconomic conditions. *J Gerontol Ser A Biol Sci Med Sci*. 2005;60:224–31. <https://doi.org/10.1093/gerona/60.2.224>.
 28. Papp KV, Amariglio RE, Dekhtyar M, Roy K, Wigman S, Bamfo R, et al. Development of a psychometrically equivalent short form of the face-name associative memory exam for use along the early alzheimers disease trajectory. *Clin Neuropsychol*. 2014;28:771–85. <https://doi.org/10.1080/13854046.2014.911351>.
 29. Wechsler D. Wechsler Memory Scale, Revised: Manual. San Antonio; 1987.
 30. Wechsler D. Wechsler Adult Intelligence Scale, Revised: Manual. San Antonio; 1981.
 31. Folstein MF, Folstein SE, McHugh PR. "Mini-mental state". A practical method for grading the cognitive state of patients for the clinician. *J Psychiatr Res*. 1975;12:189–98. [https://doi.org/10.1016/0022-3956\(75\)90026-6](https://doi.org/10.1016/0022-3956(75)90026-6).
 32. Lu K, Nicholas JM, Collins JD, James SN, Parker TD, Lane CA, et al. Cognition at age 70: Life course predictors and associations with brain pathologies. *Neurology*. 2019;93:E2144–56.
 33. Donohue MC, Sperling RA, Salmon DP, Rentz DM, Raman R, Thomas RG, et al. The preclinical Alzheimer cognitive composite: Measuring amyloid-related decline. *JAMA Neurol*. 2014;71:961–70. <https://doi.org/10.1001/jama.neurol.2014.803>.
 34. Wechsler D. WASI: Wechsler Abbreviated Scale of Intelligence. San Antonio; 1999.
 35. Leung KK, Barnes J, Modat M, Ridgway GR, Bartlett JW, Fox NC, et al. Brain MAPS: An automated, accurate and robust brain extraction technique using a template library. *Neuroimage*. 2011;55:1091–108. <https://doi.org/10.1016/j.neuroimage.2010.12.067>.
 36. Sudre CH, Cardoso MJ, Bouvy WH, Biessels GJ, Barnes J, Ourselin S. Bayesian Model Selection for Pathological Neuroimaging Data Applied to White Matter Lesion Segmentation. *IEEE Trans Med Imaging*. 2015;34:2079–102. <https://doi.org/10.1109/TMI.2015.2419072>.
 37. Lane CA, Barnes J, Nicholas JM, Sudre CH, Cash DM, Malone IB, et al. Associations between Vascular Risk Across Adulthood and Brain Pathology in Late Life: Evidence from a British Birth Cohort. *JAMA Neurol*. 2020;77:175–83.
 38. D'Agostino RB, Vasan RS, Pencina MJ, Wolf PA, Cobain M, Massaro JM, et al. General cardiovascular risk profile for use in primary care: The Framingham heart study. *Circulation*. 2008;117:743–53. <https://doi.org/10.1161/CIRCULATIONAHA.107.699579>.
 39. Cooper R, Mishra GD, Kuh D. Physical activity across adulthood and physical performance in midlife: Findings from a British birth cohort. *Am J Prev Med*. 2011;41:376–84.
 40. Dodds R, Kuh D, Sayer AA, Cooper R. Physical activity levels across adult life and grip strength in early old age: Updating findings from a British birth cohort. *Age Ageing*. 2013;42:794–8. <https://doi.org/10.1093/ageing/af124>.
 41. Malone IB, Leung KK, Clegg S, Barnes J, Whitwell JL, Ashburner J, et al. Accurate automatic estimation of total intracranial volume: A nuisance variable with less nuisance. *Neuroimage*. 2015;104:366–72. <https://doi.org/10.1016/j.neuroimage.2014.09.034>.
 42. Cooper R, Richards M, Kuh D. Childhood Cognitive Ability and Age-Related Changes in Physical Capability from Midlife: Findings from a British Birth Cohort Study. *Psychosom Med*. 2017;79:785–91. <https://doi.org/10.1097/PSY.0000000000000482>.
 43. Lane CA, Barnes J, Nicholas JM, Sudre CH, Cash DM, Parker TD, et al. Associations between blood pressure across adulthood and late-life brain structure and pathology in the neuroscience substudy of the 1946 British birth cohort (Insight 46): an epidemiological study. *Lancet Neurol*. 2019;18:942–52.
 44. Nagin DS, Odgers CL. Group-based trajectory modeling in clinical research. *Annu Rev Clin Psychol*. 2010;6:109–38. <https://doi.org/10.1146/annurev.clinpsy.121208.131413>.
 45. Andruff H, Carraro N, Thompson A, Gaudreau P, Louvet B. Latent Class Growth Modelling: A Tutorial. *Tutor Quant Methods Psychol*. 2009;5:11–24.
 46. van der Nest G, Lima Passos V, Candel MJJM, van Breukelen GJP. An overview of mixture modelling for latent evolutions in longitudinal data: Modelling approaches, fit statistics and software. *Adv Life Course Res*. 2020;43:100323.
 47. Aribisala BS, Gow AJ, Bastin ME, Valdés Hernández MDC, Murray C, Royle NA, et al. Associations between level and change in physical function and brain volumes. *PLoS One*. 2013;8. <https://doi.org/10.1371/journal.pone.0080386>.
 48. Okely JA, Deary IJ. Associations Between Declining Physical and Cognitive Functions in the Lothian Birth Cohort 1936. *Journals Gerontol - Ser A Biol Sci Med Sci*. 2020;75:1393–402. <https://doi.org/10.1093/gerona/glaa023>.
 49. Jiang J, Sachdev P, Lipnicki DM, Zhang H, Liu T, Zhu W, et al. A longitudinal study of brain atrophy over two years in community-dwelling older individuals. *Neuroimage*. 2014;86:203–11.
 50. Silbert LC, Nelson C, Howieson DB, Moore MM, Kaye JA. Impact of white matter hyperintensity volume progression on rate of cognitive and motor decline. *Neurology*. 2008;71:108–13. <https://doi.org/10.1212/01.wnl.0000316799.86917.37>.
 51. Moscufo N, Wolfson L, Meier D, Liguori M, Hildenbrand PG, Wakefield D, et al. Mobility decline in the elderly relates to lesion accrual in the splenium of the corpus callosum. *Age (Omaha)*. 2012;34:405–14. <https://doi.org/10.1007/s11357-011-9242-4>.
 52. Pinter D, Ritchie SJ, Gatttringer T, Bastin ME, Hernández M, del Corley CV, et al. Predictors of gait speed and its change over three years in community-dwelling older people. *Ageing (Albany NY)*. 2018;10:144–53. <https://doi.org/10.18632/aging.101365>.
 53. Koppelmans V, Hirsiger S, Méritat S, Jäncke L, Seidler RD. Cerebellar gray and white matter volume and their relation with age and manual motor performance in healthy older adults. *Hum Brain Mapp*. 2015;36:2352–63. <https://doi.org/10.1002/hbm.22775>.
 54. Bernard JA, Seidler RD. Moving forward: Age effects on the cerebellum underlie cognitive and motor declines. *Neurosci Biobehav Rev*. 2014;42:193–207.

55. Seidler RD, Bernard JA, Burutolu TB, Fling BW, Gordon MT, Gwin JT, et al. Motor control and aging: Links to age-related brain structural, functional, and biochemical effects. *Neurosci Biobehav Rev*. 2010;34:721–33. <https://doi.org/10.1016/j.neubiorev.2009.10.005>.
56. Bäckman L, Lindenberger U, Li SC, Nyberg L. Linking cognitive aging to alterations in dopamine neurotransmitter functioning: Recent data and future avenues. *Neurosci Biobehav Rev*. 2010;34:670–7. <https://doi.org/10.1016/j.neubiorev.2009.12.008>.
57. MacDonald SWS, DeCarlo CA, Dixon RA. Linking biological and cognitive aging: toward improving characterizations of developmental time. *Journals Gerontol - Ser B Psychol Sci Soc Sci*. 2011;66(Suppl 1). <https://doi.org/10.1093/geronb/gbr039>.
58. Sternäng O, Reynolds CA, Finkel D, Ernsth-bravell M, Pedersen NL, Dahl aslan AK. Factors associated with grip strength decline in older adults. *Age Ageing*. 2015;44:269–74. <https://doi.org/10.1093/ageing/afu170>.
59. Wardlaw JM, Smith EE, Biessels GJ, Cordonnier C, Fazekas F, Frayne R, et al. Neuroimaging standards for research into small vessel disease and its contribution to ageing and neurodegeneration. *Lancet Neurol*. 2013;12:822–38. [https://doi.org/10.1016/S1474-4422\(13\)70124-8](https://doi.org/10.1016/S1474-4422(13)70124-8).
60. Cooper R, Muniz-Terrera G, Kuh D. Associations of behavioural risk factors and health status with changes in physical capability over 10 years of follow-up: The MRC National Survey of Health and Development. *BMJ Open*. 2016;6:e009962.
61. Dodds RM, Syddall HE, Cooper R, Benzeval M, Deary IJ, Dennison EM, et al. Grip strength across the life course: Normative data from twelve British studies. *PLoS One*. 2014;9:e113637. <https://doi.org/10.1371/journal.pone.0113637>.

Publisher's Note

Springer Nature remains neutral with regard to jurisdictional claims in published maps and institutional affiliations.

Ready to submit your research? Choose BMC and benefit from:

- fast, convenient online submission
- thorough peer review by experienced researchers in your field
- rapid publication on acceptance
- support for research data, including large and complex data types
- gold Open Access which fosters wider collaboration and increased citations
- maximum visibility for your research: over 100M website views per year

At BMC, research is always in progress.

Learn more biomedcentral.com/submissions

