


CASE REPORT

Open Access



# Acute surgical-like abdomen as a gastrointestinal manifestation of COVID-19 infection: a case report in Colombia

Fernando Sierra-Arango<sup>1,4\*</sup> , Cathalina Vergara-Cabra<sup>2</sup>, Mariana Vásquez-Roldan<sup>3</sup> and Erika D. Pérez-Riveros<sup>3</sup>

## Abstract

**Background:** The SARS-CoV-2 pandemic is a considerable public health problem, which has caused a burden on health systems in many countries. Despite the existence of multiple studies on the different digestive symptoms and their relationship with this disease, it is still vital to highlight the severity of the different symptoms, the need to diagnose it properly and quickly. Currently in Colombia there are no writings that highlight the above.

**Case presentation:** This article reports the case of a 37-year-old female patient, with no important history, who consulted for 10 h of a generalized intense abdominal pain, of sudden onset, associated with multiple stools of diarrheal consistency, and no respiratory symptoms and no epidemiological exposure. Physical examination with intense pain in the colic frame with tenderness. It was decided to rule out surgical pathology and a CT scan was performed finding no evidence of acute intra-abdominal pathology, but with a peripheral alveolar, and ground-glass opacities at lung bases, classic COVID-19 radiological pattern, confirmed by a positive RT-PCR for SARS-CoV-2, leading to consider that the gastrointestinal symptoms were secondary to this infection. Symptomatic management was given with subsequent improvement.

**Conclusions:** It is extremely important to present this first case report of a young female COVID-19 patient with an acute abdominal pain as the main clinical manifestation, that almost culminates in a surgical procedure; demonstrating the scope of gastrointestinal symptoms secondary to SARS-CoV-2 infection.

**Keywords:** SARS-CoV-2, Acute abdomen, Surgical Procedure, Abdominal pain

## Background

The SARS-CoV-2 pandemic has exponentially increased to more than 121,209,510 confirmed cases worldwide, including 2,680,469 deaths reported to the WHO [1, 2]. Increasing the need to acquire knowledge through research and demanding a rapid response from health systems and medical personnel.

COVID-19 generates a wide spectrum of symptoms, from completely asymptomatic patients to severe manifestations mainly pulmonary such as pneumonia,

respiratory failure, shock, or dysfunction of the multi-organ system. Gastrointestinal (GI) symptoms like diarrhea, nausea and vomiting are also common, even a recent study reported that patients who presented with digestive manifestations had a worse prognosis [3, 4].

The pathophysiology of gastrointestinal manifestations remains unclear. Evidence suggests that the gastrointestinal tract could be a viral target for SARS-CoV-2 infection because this pathogen infects host cells through the angiotensin-converting enzyme 2 (ACE2) receptor that is expressed in various organs, including the lungs, heart, kidneys, and intestine. Most of these receptors are found on the epithelial cells of the esophagus and on the absorbent enterocytes of the ileum and colon. Once the virus

\*Correspondence: fersi17@yahoo.com

<sup>4</sup> Fundación Santa Fe de Bogotá, Calle 119a# 7-49, Bogotá, Colombia  
Full list of author information is available at the end of the article



© The Author(s) 2021. **Open Access** This article is licensed under a Creative Commons Attribution 4.0 International License, which permits use, sharing, adaptation, distribution and reproduction in any medium or format, as long as you give appropriate credit to the original author(s) and the source, provide a link to the Creative Commons licence, and indicate if changes were made. The images or other third party material in this article are included in the article's Creative Commons licence, unless indicated otherwise in a credit line to the material. If material is not included in the article's Creative Commons licence and your intended use is not permitted by statutory regulation or exceeds the permitted use, you will need to obtain permission directly from the copyright holder. To view a copy of this licence, visit <http://creativecommons.org/licenses/by/4.0/>. The Creative Commons Public Domain Dedication waiver (<http://creativecommons.org/publicdomain/zero/1.0/>) applies to the data made available in this article, unless otherwise stated in a credit line to the data.

enters the cell, it has the potential to generate a release of cytokines and chemokines, which triggers an acute intestinal inflammation characterized by infiltration of neutrophils, macrophages and T cells. This would explain the microvascular dysfunction associated with tissue edema and sometimes with pro-coagulant state or bleeding which could explain the clinical presentation of some patients [3, 5].

Below we present the clinical case of a young patient with acute abdominal pain, which almost culminated in a surgical procedure and after an adequate medical approach, she was diagnosed with COVID-19 and given the appropriate management. The foregoing demonstrates the extent of gastrointestinal symptoms secondary to SARS-CoV-2 infection and clarifies the different initial symptoms of this disease for patients, allowing not only to quickly identify and isolate these patients, but also to better understand the disease and make management approaches more consistent with the clinic and pathophysiology of the disease [5, 6].

### Case presentation

A 37-year-old female patient, with no significant history, who consulted for 10 h for severe generalized abdominal pain of sudden onset, associated with multiple diarrheal stools without mucus or blood (6 stools in the last hour), without fever, nausea or vomiting. She had no respiratory symptoms or epidemiological exposure at that time. Upon admission to the physical examination, the patient was stable, moderately dehydrated, and with mild tachycardia. During abdominal palpation, she had only severe crampy pain with tenderness, apparently no peritoneal irritation.

The laboratory results included a slightly normal blood count, normal arterial gases, negative pregnancy test, normal urinalysis and liver profile with mild elevation of transaminase (Table 1). Analgesic management with opioid and antispasmodics were initiated given the intensity of pain. An endoscopy was performed showing chronic gastritis and biopsies confirming this condition so she was discharged with ambulatory management.

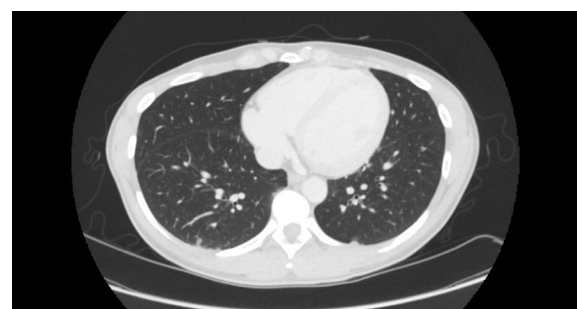
The patient has to consulted again to the emergency room due to the persistence of the symptoms. Therefore, it was decided to rule out surgical pathology and physicians performed a contrasted abdomen CT scan. The report showed no imaging evidence suggesting acute intra-abdominal pathology, but with a peripheral alveolar, and ground-glass opacities at lung bases (Figs. 1 and 2), classic COVID-19 radiological pattern, one week ago a RT-PCR SARS-CoV-2 test was performed and the result was positive.

The patient was diagnosed with COVID-19 because of the images and lab test leading us to consider that

**Table 1** Paraclinics report

	Results	Reference values
Paraclinic		
Amylase	67,00 U/L	29,00- 103,00
Aspartate aminotransferase	58,00 U/L	0,00–35,00
Alanine aminotransferase	72,00 U/L	0,00–35,00
Total bilirubin	0,34 mg/dl	0,30 – 1,00
Direct bilirubin	0,06 mg/dl	0,00–0,20
Leukocytes	5,80 10 <sup>3</sup> /ul	5,00–10,00
Neutrophils	4,30 10 <sup>3</sup> /ul	1,40–6,50
Lymphocytes	0,80 10 <sup>3</sup> /ul	1,20–3,40
Hemoglobin	14,10 g/dl 10 <sup>3</sup> /ul	12,00–16,00
Hematocrit	43,30% 10 <sup>3</sup> /ul	36,00–48,00
Platelets	191,00 10 <sup>3</sup> /ul	150,00–450,00
Human chorionic gonadotropin	0,48 mIU/ml	0–0,6
Arterial gases		
PH	7,51	7,40–7,46
PCO2	31	28,00–32,00
PO2	71	60,00–100,00
HCO3	24,7	--
FIO2	21	--
Lactate	1,1	--
Base excess	1,7	--
SPO2	96%	90–100 %
PAFI	338	--

Paraclinics that were made to the patient with reference values, in international units



**Fig. 1** Contrasted abdomen CT scan: A peripheral alveolar, and ground-glass opacities at lung window

the gastrointestinal symptoms were secondary to this infection. Symptomatic management was given with subsequent improvement so it was decided to discharge the patient after two days, with recommendations.



**Fig. 2** Contrasted abdomen CT scan: A peripheral alveolar, and ground-glass opacities at lung window

## Discussion and conclusion

Throughout this pandemic, emphasis has been placed on respiratory symptoms, having the highest prevalence, however, other clinical manifestations should be considered, including gastrointestinal symptoms [6, 7]. The epithelial cells of the stomach and liver cells express angiotensin converting enzyme 2 (ACE2), the main receptor for SARS-CoV-2 through which it infects humans and through which it induces apoptosis and pyroptosis. Leading to cell damage and dysfunction of the microcirculation resulting in cases of bleeding and inflammation in the intestine that explain the symptoms of pain [8].

Therefore, it is important to highlight two aspects based on the present case. First the needing of a proper diagnosis because some patients can simulate an acute abdomen and be inappropriately taken for surgery, and second the early identification of symptoms related to COVID-19 to avoid contagion. The characteristics of gastrointestinal symptoms are more insidious than respiratory, making them easy to miss. Some patients may have only gastrointestinal manifestations, which makes it confusing for patients who may ignore it and not consult it, and for care personnel who do not suspect the true origin of the disease. Some of the patients even continue to excrete the virus in the stool with negative respiratory samples, further complicating the diagnostic approach and leading to potential problems for themselves and individuals with whom they came into contact becoming them as the major drivers of the pandemic emergency [3, 9].

Thus, patients diagnosed with COVID-19 are more susceptible to developing micro-thrombosis and even ischemia of the vascular bed of the gastrointestinal tract [9, 10] due to the coagulopathy process that is triggered [11–13]. In our case, the patient did not present respiratory symptoms and the approach was made based on abdominal CT imaging findings in which alveolar

opacities were observed in ground glass patterns in the lung bases. Given the above, gastrointestinal infection by COVID-19 should be considered in all patients who come to the emergency room [6, 7, 14]. Multiple studies recommend that the SARS-CoV-2 test be considered a protocol for patients presenting with gastrointestinal symptoms, especially severe acute abdominal pain that suggests surgical pathology as a differential diagnosis. In this way, complications of both the pathology itself and the diagnostic process can be avoided and an epidemiological fence can be made in time.

## Acknowledgements

Not applicable.

## Authors' contributions

FSA contributed the conception, and design; FSA, MVR and EPR contributed in the acquisition of data; FSA, CVC, MVR and EPR contributed analysis and interpretation of data, and writing of the manuscript. FSA made the critical revision of the manuscript. All authors read and approved the final manuscript.

## Funding

The authors did not participate in any open calls or received any financial support from their institution or from any other entity during the development of the study. Therefore, they have not received any research funding, nor are currently receiving any research funding, reason why there are no competing interests.

## Availability of data and materials

Data sharing is not applicable to this article as no datasets were generated or analyzed during the current study.

## Declarations

### Ethics approval and consent to participate

Diagnostic procedures and treatments have been performed according to standard clinical care. The patient signed institutional informed consent to receive of the health care.

### Consent for publication

Written informed consent was obtained from the patient for publication of this case report. A copy of the written consent is available for review by the Editor-in-Chief of this journal.

### Competing interests

The authors declare that they have no competing interests.

### Author details

<sup>1</sup> Clinical Studies and Clinical Epidemiology Division, Digestive Endoscopy Division, Fundación Santa Fe de Bogotá, Bogotá, Colombia. <sup>2</sup> Gastroenterology and Hepatology Department, Fundación Santa Fe de Bogotá, Bogotá, Colombia. <sup>3</sup> Gastroenterology and Hepatology Department and Clinical Studies and Clinical Epidemiology Division, Fundación Santa Fe de Bogotá, Bogotá, Colombia. <sup>4</sup> Fundación Santa Fe de Bogotá, Calle 119a# 7-49, Bogotá, Colombia.

Received: 17 November 2020 Accepted: 12 April 2021

Published online: 22 April 2021

## References

1. WHO Coronavirus (COVID-19) Dashboard [Internet]. [cited 23 of march 2021]. <https://covid19.who.int>.

2. John Hopkins. Coronavirus COVID-19 Global Cases by the Center for Systems Science and Engineering (CSSE) at Johns Hopkins University [Internet]. Available from: <https://coronavirus.jhu.edu/map.html>.
3. Zhang J, Garrett S, Sun J. Gastrointestinal symptoms, pathophysiology, and treatment in COVID-19. *Genes Dis* [Internet]. 2020 Sep 5 [cited 2021 Mar 23]; Available from: <https://www.sciencedirect.com/science/article/pii/S2352304220301185>.
4. Lee I-C, Huo T-I, Huang Y-H. Gastrointestinal and liver manifestations in patients with COVID-19. *J Chin Med Assoc JCMA*. 2020;83(6):521–3.
5. Varga Z, Flammer AJ, Steiger P, Haberecker M, Andermatt R, Zinkernagel AS, et al. Endothelial cell infection and endotheliitis in COVID-19. *Lancet*. 2020 May;395(10234):1417–8.
6. Redd WD, Zhou JC, Hathorn KE, McCarty TR, Bazarbashi AN, Thompson CC, et al. Prevalence and characteristics of gastrointestinal symptoms in patients with SARS-CoV-2 infection in the United States: A multicenter cohort study. *Gastroenterology*. 2020;S0016508520305643.
7. Ashcroft J, Hudson VE, Davies RJ. COVID-19 gastrointestinal symptoms mimicking surgical presentations. *Ann Med Surg*. 2020;56:108–9.
8. Yang L, Tu L. Implications of gastrointestinal manifestations of COVID-19. *Lancet Gastroenterol Hepatol*. 2020;5(7):629–30.
9. Gahide G, Frandon J, Vendrell J-F. COVID-19 patients presenting with afebrile acute abdominal pain. *Clin Med*. 2020;20(3):e4–6.
10. Hadi A, Werge M, Kristiansen KT, Pedersen UG, Karstensen JG, Novovic S, et al. Coronavirus disease-19 (COVID-19) associated with severe acute pancreatitis: case report on three family members. *Pancreatol*. 2020;20(4):665–7.
11. Lovece A, Asti E, Bruni B, Bonavina L. Subtotal laparoscopic cholecystectomy for gangrenous gallbladder during recovery from COVID-19 pneumonia. *Int J Surg Case Rep*. 2020;72:335–8.
12. Asti E, Lovece A, Bonavina L. Gangrenous cholecystitis during hospitalization for SARS-CoV2 infection. *Updat Surg*. 2020 May 26.
13. He L, Zhao W, Zhou W, Pang P, Liao Y, Liu J. An emergency surgery in severe case infected by COVID-19 with perforated duodenal bulb ulcer. *Ann Surg*. 2020;272(1):e35–7.
14. Lima DS, Ribeiro MAF, Gallo G, Di Saverio S. Role of chest CT in patients with acute abdomen during the COVID-19 era: chest-CT in COVID-19 positive patients. *Br J Surg*. 2020 ;107(7):e196–6.

### Publisher's note

Springer Nature remains neutral with regard to jurisdictional claims in published maps and institutional affiliations.

Ready to submit your research? Choose BMC and benefit from:

- fast, convenient online submission
- thorough peer review by experienced researchers in your field
- rapid publication on acceptance
- support for research data, including large and complex data types
- gold Open Access which fosters wider collaboration and increased citations
- maximum visibility for your research: over 100M website views per year

At BMC, research is always in progress.

Learn more [biomedcentral.com/submissions](https://biomedcentral.com/submissions)

