

RESEARCH ARTICLE

Open Access



# Chest pain syndromes are associated with high rates of recidivism and costs in young United States Veterans

Basmah Safdar<sup>1,2\*</sup>, James Dziura<sup>1,2,3</sup>, Harini Bathulapalli<sup>2,5</sup>, Douglas L. Leslie<sup>4</sup>, Melissa Skanderson<sup>2</sup>, Cynthia Brandt<sup>1,2</sup> and Sally G. Haskell<sup>2,5</sup>

## Abstract

**Background:** Recurrent chest pain is common in patients with and without coronary artery disease. The prevalence and burden of these symptoms on healthcare is unknown.

**Objectives:** To compare chest pain return visits (recidivism) in patients with unexplained chest pain (UCP) against reference group of patients with coronary artery disease (CAD) and estimate the annual cost of recurrent chest pain.

**Methods:** In a retrospective cohort study, a Veteran Affairs (VA) administrative and clinical database of Veterans who were deployed to or served in support of the wars in Iraq or Afghanistan was queried for first disease specific ICD-9 code to form two cohorts (UCP or CAD). Patients were followed between 09/2001-09/2010 for the first and cumulative return visits for UCP or cardiac pain (ACS or angina) to clinic, emergency department or admission; or for all-cause death. Time to return was analyzed using Cox regression and negative binomial models and adjusted for age, gender, race, marital status, and risk factors (hypertension, hyperlipidemia, diabetes, smoking and obesity). Direct total costs included inpatient, outpatient and fee basis (non-VA) costs.

**Results:** Of 749,036 patients, 20,521 had UCP and 5303 had CAD. UCP patients were young and had a lower burden of risk factors than CAD cohort ( $p < .01$ ). Yet, these patients were likely to return *earlier* with *any* chest pain (adjusted Hazard Ratio [aHR] = 1.76; 95 % CI 1.65-1.88); or unexplained chest pain than CAD patients (aHR: 1.89; 95 % CI 1.77-2.01). UCP patients were also likely to return *more frequently* for any chest pain (aRate Ratio = 1.54; 95 % CI 1.43-1.64) or UCP than CAD patients (aRR = 2.63; 95 % CI 2.43-2.87). Per 100 patients, the 1-year cumulative returns were 37 visits for reference group and 45 visits for UCP cohort. The annual costs for chest pain averaged \$69,009 for CAD and \$57,336 for UCP patients (log geometric mean ratio=1.25; 95 % CI 1.18-1.32).

**Conclusion:** Chest pain recidivism is common and costly even in patients without known CAD. We need evidence-based guidelines for these patients to minimize returns.

**Keywords:** Chest pain, Recidivism, Costs

## Background

Chest pain is one of the most common conditions seen in the primary care setting. In fact, 20-40 % of the population experiences some chest pain over their lifetime. In the United States, over eight million patients with chest pain are evaluated in the outpatient setting each year, posing a significant health burden [1]. Primary care physicians across

the world face the challenge of distinguishing life threatening cardiac causes of chest pain from non-cardiac etiologies and of doing this in a timely and efficient fashion. The standard of care for chest pain patients is to first rule out acute coronary syndrome (ACS) [2, 3]. However, musculoskeletal causes of chest pain are the most common cause in primary care followed by gastrointestinal, pulmonary, psychological (depression or PTSD) or microvascular disease—all common in young patients [4–7]. Several diagnostic algorithms have been proposed to help the clinician reach a diagnosis in these cases [8]. And yet, a good proportion of cases remain ‘non-

\* Correspondence: Basmah.safdar@yale.edu

<sup>1</sup>Department of Emergency Medicine, 464 Congress Ave, New Haven, CT, USA

<sup>2</sup>VA Connecticut Healthcare System, 950 Campbell Ave, West Haven, CT, USA  
Full list of author information is available at the end of the article

specific' or 'unexplained chest pain' (UCP). This is evident from an upward trend in unexplained chest pain admissions nationwide despite declining ACS trends [9, 10]. In contrast to ACS patients, UCP is more common in young patients and in women corroborating their low-risk pre-test probability for CAD [9, 11, 12]. Deciding the appropriate level of response for such patients is both difficult task and variable, often leading to both over- and under-triage in primary care [13]. While the annual cost burden of heart disease has been estimated at \$312 billion, similar costs of unexplained chest pain that represent majority of primary care visits remain unknown [14, 15].

We evaluated these questions in the Veteran Affairs (VA) health care system using the Women Veteran Cohort Study (WVCS), with its detailed electronic health records providing longitudinal data of service utilization and costs of Veterans of Operation Enduring Freedom (OEF), Operation Iraqi Freedom (OIF) and Operation New Dawn (OND) [16]. Prior reports show that chest pain is common among Veterans [17]. We chose this cohort because it primarily included young patients allowing us to estimate the burden of UCP in low-risk patients, and the single insurance with a well-integrated electronic medical records system allowed us longitudinal follow-ups. VA facilities located throughout the US allow Veterans to continue VA care despite relocation, thus allowing a prospective evaluation of the full burden and cost of unexplained chest pain. The main aim of our study was to document the burden of chest pain recidivism in young patients without CAD. Our hypothesis was the chest pain recidivism would be less in the low-risk UCP group compared to a reference group of patients with known CAD. The secondary outcome was calculating the annual costs associated with unexplained chest pain.

## Methods

### Study population and data sources

The Defense Manpower Data Center provided the VA OEF/OIF/OND roster for personnel discharged from the US military from 09/12/2001 to 09/30/2010 and enrolled for VA care. Data on their services and costs were linked to the VA administrative and clinical encounters to the VA National Patient Care Database, Decision Support Systems (DSS), National Data extracts and the VA Corporate Data Warehouse. Detailed information on services paid for by VA but provided by non-VA facilities or contract providers, including inpatient, outpatient and pharmacy care was obtained from the DSS Fee Basis files. The Human Investigation Committees at West Haven VA Medical Center and Yale University School of Medicine approved this study.

### Inclusion criteria and variable definitions

For diagnostic data, the International Classification of Disease, 9<sup>th</sup> Revision (ICD-9) was used and medical

conditions were included if the specific code was noted at least once for an inpatient stay, observation or ED stay or at least twice for an outpatient visit. This methodology for the use of ICD-9 codes in VA database has been validated elsewhere [18].

For co-morbidities, we used previously validated diagnostic algorithms for diabetes, hypertension, dyslipidemia, obesity, and CAD [19]. We defined dyslipidemia if patient had ICD-9 code for dyslipidemia or was on statins for a year. We included active smokers [20]. Body mass index was calculated using weight and height averaged over a 1-year period.

Study cohort was defined based on the *first* diagnosis after entry into the VA system (end of last deployment). Those with an encounter listed as ICD-9 code '786.50' entered the unexplained chest pain cohort and those with CAD codes (see Additional file 1) formed known CAD cohort. There were 151 (0.007 %) patients in the first cohort that converted to CAD during follow up and we included only their follow-up to CAD conversion in the analysis.

### Outcomes and follow-up

Outcomes included any return visit to the VA or non-VA (fee basis) for either unexplained chest pain or cardiac chest pain (myocardial infarction, stable or unstable angina), or death. Patients were followed until study outcome or exit from the cohort during a ten-year study period. ICD-9 codes included were chest pain (786.50), CAD (414.x and 429.x), acute myocardial infarction (410.x), unstable angina (411.x) or angina (413.x) as primary or secondary diagnosis. Time to return visit as well as the cumulative number of chest pain visits were recorded.

Total health care costs were computed by summing all costs across inpatient, outpatient and pharmacy services after identification of cohort. Costs included both costs of services delivered in VA facilities as well as costs of services delivered by non-VA care (fee-basis) providers. Finally each of these measures were linked to the cardiac ICD-9 codes outlined above to determine the cost of care for both groups of patients.

### Analysis

Continuous variables were expressed as mean  $\pm$  standard deviation and compared by unpaired Student's *t* test. Nominal or dichotomous variables were expressed as proportions and compared by chi-square test. Kaplan Meier curves were estimated to show those without a return visit by cohort and gender for (a) *any* chest pain (i.e., unexplained chest pain or cardiac chest pain) and b) unexplained chest pain only. Time to return visit and incident rate for death was compared using Cox regression with adjustment for age, gender, race, marital status,

education, hypertension, dyslipidemia, smoking, diabetes, obesity (defined as BMI  $\geq 30$ ), cohort and interaction terms with gender.

Cumulative incident return rates were calculated per patient from the point of entry to last follow up. Crude incident rates were calculated by dividing the total number of return visits for chest pain by the total number of patients in each cohort for the duration of observation for each patient. All eligible index visits for chest pain were used as the unit of analysis. This way we captured multiple visits for the same patients. All rates were expressed as the total per 10000 visits. Rate ratios and confidence level for all rates were calculated using a generalized linear model with a negative binomial distribution and an offset of the log years of follow-up given the variable observation period for each patient. Separate adjusted models were constructed using the socio-demographic and cardiac risk factors listed above. The mean number of return visits per subject was calculated using a nonparametric estimator [21].

Total costs were compared across the two cohorts using geometric means and Mann-U-Whitney tests because of extreme right skewness. A generalized linear model with a log link function was developed to identify and adjust for differences in demographic, cardiac risk factors and year of entry (to account for inflation). Because pharmacy costs are not coded by diagnosis, all prescription use was compared for the two cohorts.

All analysis was performed using SAS v.9.0. P-values of  $<0.05$  were considered statistically significant.

## Results

The study cohort followed 749,036 patients prospectively over ten years of which 2592 (2.9 %) females and 18,010 (2.7 %) males reported chest pain. After entering the VA system, 20,521 patients entered the unexplained chest pain (UCP) cohort and 5303 patients constituted the CAD (reference) cohort based on the first diagnosis and were analyzed. As expected, our cohort was young with median age 34 years (IQR 24, 42), 11 % female and 66 % white. Overall cardiac risk factor profile was as follows: 39 % had hypertension, 12 % were diabetic, 45 % had dyslipidemia, 38 % smoked and 31 % were obese. Known CAD patients were more likely to be older, male, white, married and had a higher rate of co-morbidities (see Table 1).

### Primary outcome

Patients were followed over an average of 2.02 years for the following:

#### a) First return visit for chest pain

The 1-month and 1-year probability of a return visit for *any chest pain* was 14.2 % and 26.6 % respectively in the unexplained chest pain cohort versus 8 % and 18.4 % in

**Table 1** Baseline demographic characteristics of patients by gender and cohort

Characteristic	Coronary Artery Disease (n = 5303)			Unexplained Chest Pain (n = 20521)			Difference Between Cohorts P value
	Total 21 %	Female	Male	Total 79 %	Female	Male	
Median Age in years (IQR)	42 (34,49)	38 (26,44)	42 (34,49)	31 (23,40)	29 (23,39)	31 (23,40)	<.001
Race							
White	58 %	41 %	59 %	55 %	42 %	57 %	<.001
Black	19 %	38 %	18 %	21 %	36 %	19 %	
Hispanic	9 %	6 %	9 %	12 %	9 %	13 %	
Others	14 %	15 %	14 %	12 %	13 %	11 %	
Married	69 %	41 %	71 %	51 %	35 %	54 %	<.001
Educated (High School or higher)	99 %	99 %	99 %	99 %	99 %	99 %	0.02*
Cardiac Risk Factors							
Hypertension	50 %	31 %	51 %	29 %	21 %	30 %	<.001
Diabetes	14 %	7 %	14 %	5 %	4 %	6 %	<.001
Hyperlipidemia	57 %	34 %	58 %	33 %	22 %	35 %	<.001
Smoking	37 %	29 %	38 %	39 %	29 %	40 %	0.01
Obesity	33 %	30 %	33 %	28 %	25 %	28 %	<.001

Note: Table percentage are column percentage; \*percentage are rounded off to the nearest decimal; the p is significant at  $>.05$  level using Chi-sq Test

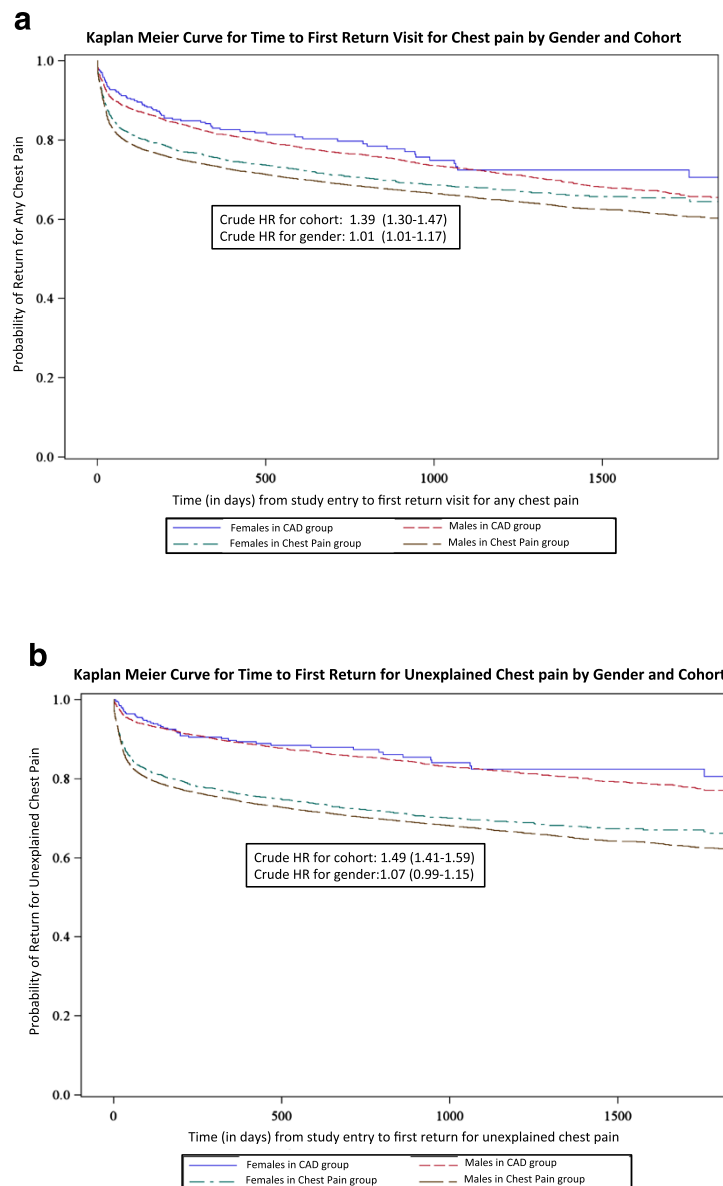
the CAD cohort (Crude HR = 1.39, 95 % CI 1.31-1.47) (Fig. 1a). Adjusted Cox regression showed UCP patients were 76 % more likely to return earlier with chest pain as compared to CAD patients (Adjusted HR = 1.76; 95 % CI 1.65-1.88).

The 1-month and 1-year probability of a return visit for *unexplained chest pain* alone was higher (13.4 % and 25.3 %) in the UCP cohort than the reference group (4 % and 10.8 %) (Crude HR = 1.49; 95 % CI 1.41-1.59) (Fig. 1b). After adjustment, UCP patients were 89 % more likely to return earlier for unexplained chest pain as compared to CAD patients (Adjusted HR: 1.89; 95 % CI 1.77-2.01).

**b) Cumulative returns for chest pain**

Negative binomial regression comparing cumulative return visits for chest pain for the duration of follow up revealed that patients with UCP were 58 % more likely to return for any chest pain (Rate Ratio = 1.58; 95 % CI 1.47-1.71) and 2.6 times more likely to return with unexplained chest pain than the reference group (Rate Ratio = 2.63; 95 % CI 2.43-2.87) (Table 2). Two hundred and nine (0.01 %) patients died in UCP group compared to 106 (0.02 %) CAD patients (HR = 0.61; 95 % CI 0.45-0.83).

Figure 2 shows the cumulative return visits for any chest pain by cohort. The 30-day mean return visits



**Fig. 1** Kaplan-Meier Curves for Time to First return for Chest Pain By Gender and Cohort

**Table 2** Incidence rates for return visits by cohort

Cohort	Incidence Rate (per 10,000 person-years)		Unadjusted Rate Ratio/Hazard Ratio (with 95 % confidence intervals)	P value	Adjusted Rate Ratio/Hazard Ratio <sup>a</sup> (with 95 % confidence intervals)	P value
	Unexplained CP	Known CAD				
Any Return for CP	8.2	7.1	1.25 (1.16-1.35) <sup>b</sup>	<0.0001*	1.54 (1.43-1.66) <sup>b</sup>	<0.0001*
Unexplained CP Return	7.5	3.9	2.23 (2.05-2.40) <sup>b</sup>	<0.0001*	2.63 (2.43-2.87) <sup>b</sup>	<0.0001*
Death	0.1	0.2	0.51 (0.39-0.68) <sup>b,c</sup>	0.0001*	0.61 (0.45-0.83) <sup>b,c</sup>	0.0018*

Notes: Rates are expressed in 10,000 person years; table percentages are column percentages; \*the p is significant at > .05 level

<sup>a</sup>adjusted for age in decades, white race, higher education, marital status, hypertension, diabetes, hyperlipidemia, smoking and obesity; there was no interaction found between gender and cohort

<sup>b</sup>ratio of rates of return visits in Unexplained chest pain cohort/CAD cohort

<sup>c</sup>Cox regression model used to calculate hazard rates

were 11 visits per 100 CAD patients and 17 visits per 100 UCP patients. The rates were consistently 12-15 % higher in the UCP cohort compared to the reference group at 3 months, 6 months and at 1 year from the index visit (Fig. 2).

The adjusted time to first return or cumulative rates of return visits did not differ by gender (Figs. 1 and 2).

**Secondary outcome**

**Cost comparison**

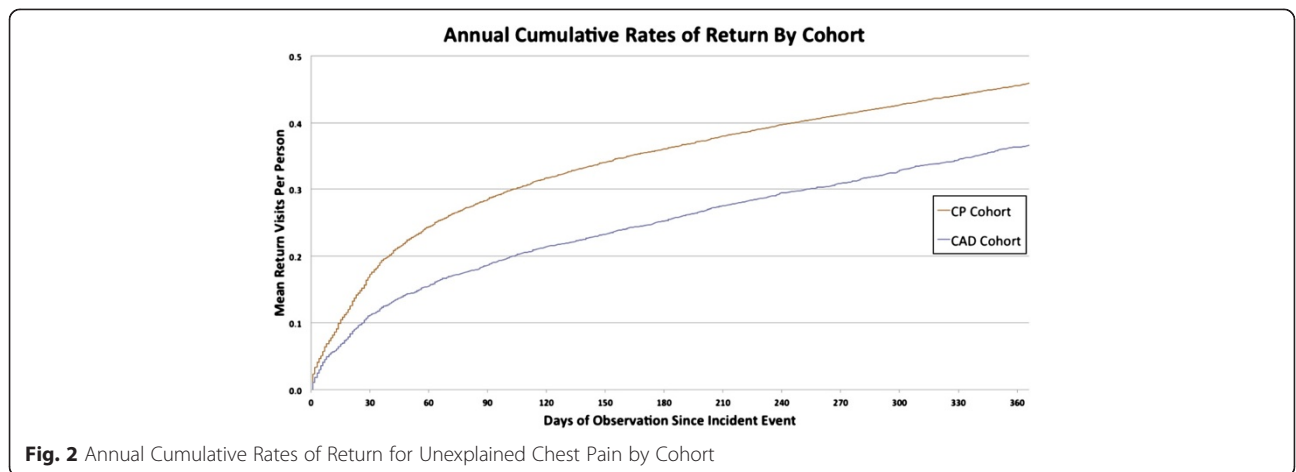
Figure 3 shows mean and median costs for UCP patients that were comparable to those of patients in the CAD cohort. Mean costs were averaged across all follow up years including those with zero costs. The mean per patient total cost was \$11,804 higher in the CAD cohort as compared to the UCP cohort. Given highly skewed data, we compared the cohorts using geometric means as well as winsorized means at 5 % and 10 % cut off values and did not find a difference (results not shown).

After adjustment for socio-demographics and cardiac risk factors using a generalized linear model with a log link function, CAD patients incurred 25 % higher costs than patients with unexplained chest pain (Log

geometric mean ratio=1.25; 95 % CI 1.18-1.32). Costs were heavily skewed, as the median costs as well as distribution of costs were similar between both groups (Fig. 3). Figure 3 shows the percent distribution of total costs across care setting for the two cohorts. Costs for procedures were 16.89 % of the total costs for UCP cohort and 16.18 % for the CAD cohort, while total pharmacy costs were 10.13 % of the total costs for the UCP cohort and 13.89 % for the CAD cohort.

**Discussion**

To our knowledge, this is the first US study that has quantified the recidivism and cost burden of unexplained chest pain in young patients. In a geographically representative national database, we found that young Veterans without coronary disease had recurrent chest pain earlier and 1.5 times more frequently than the reference group with known CAD. Studies from the UK and Norway have shown similar high burden of unexplained chest pain [13, 22]. We also report the cost burden of unexplained chest pain in the VA system. Although the adjusted average cost of chest pain visits was 25 % higher with CAD, median costs and distribution of



**Fig. 2** Annual Cumulative Rates of Return for Unexplained Chest Pain by Cohort

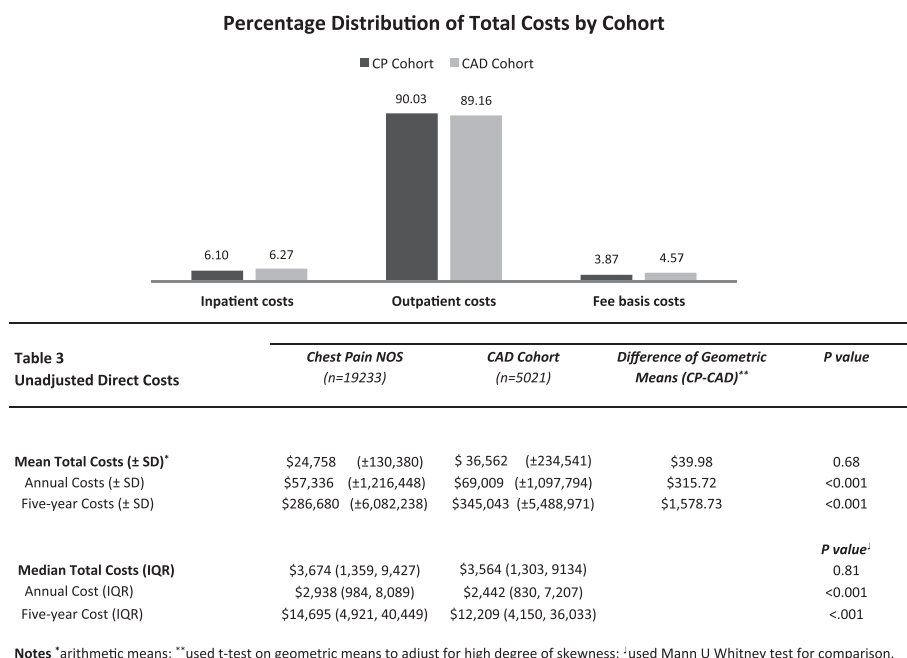


Fig. 3 Unadjusted Direct Costs of Unexplained Chest Pain

inpatient, outpatient and non-VA care (fee basis) costs of chest pain were comparable in both cohorts. With the Affordable Care Act of 2010 linking readmissions to hospital reimbursement and value-based purchasing, we believe this information is of value to hospitals and clinicians.

Our study adds several interesting findings to the existing literature. First, we found prevalence of unexplained chest pain to be high in young Veterans without coronary artery disease. This is consistent with reports from civilian population that show chest pain syndromes are more common in young patients [4, 22–25].

Second, we found chest pain recidivism to be high in young Veterans. The 30-day return rate was twice in our cohort compared to civilian reports [26]. Chest wall syndromes are often associated with high recurrence rates [27]. Patients with unexplained chest pain often view their condition as significantly less controllable and less understandable than those with pain of cardiac origin [28]. The CAD conversion rate was very low in our cohort suggesting non-cardiac cause of recurrent chest pain. Our prior work documented high rates of depression (30 %) and PTSD (17 %) as well as musculo-skeletal conditions in the WVCS cohort that could contribute towards recurrent non-cardiac chest pain [16]. Depression and anxiety has been linked with increased rates of recurrent chest pain, either through increased somatization or by reducing release of nitric oxide and potential decrease in endothelial reactivity [29, 30]. It is also possible that some of these patients returned due to

uncertainty of diagnosis. Prior reports have shown that increased awareness of the possibly dangerous ramifications of chest pain may drive patients back to the hospital for recurrent symptoms despite an initial cardiac work up [31]. In this study, we have quantified the rates of recidivism. We did not collect data on diagnostic work-ups on these patients and it is possible that due to the lower pretest probability these young Veterans did not get a comprehensive ‘rule out ACS’ evaluation prompting early returns. However such approach would not entirely explain the high annual costs incurred by this cohort or the high cumulative rates of return visits.

Finally, the cost implications of recurrent chest pain are important. Prior reports demonstrate escalating costs of unexplained chest pain admissions over the past decade [9]. In this study, we report additional outpatient costs of UCP in comparison with CAD costs in the VA system. We found the cost of recurrent chest pain to be high despite low pre-test probability of CAD in young Veterans. Annual inpatient cost averaged \$3498 per patient for chest pain and \$4327 for CAD. This was similar to the national average cost of unexplained chest pain (\$4014) as paid by Medicare [32]. The primary cost driver in the VA was outpatient visits (clinics, emergency departments and urgent care), where 80 % of chest pain patients are ruled out for ischemia. We recognize the financing mechanisms that are unique to the VA, however these are important hypothesis generating results that should be investigated in the civilian population. If corroborated in the six million annual civilian chest pain

ED visits, at an annual average total cost of \$57,336 for unexplained chest pain per patient, our study projects an annual national health burden of up to \$344 billion due to recurrent chest pain. This would be in addition to the \$312 billion cost of CAD based on prior reports of admission costs [33].

For practicing clinicians, we feel that the large population base investigated in our study, together with evidence from other studies, highlights the need to recognize unexplained chest pain as a heterogeneous syndrome and the relative importance of continuing work up for a definitive diagnosis. Our present system evaluates acute chest pain primarily through an 'ACS lens'—understandable given that missed myocardial infarction is associated with high mortality [34]. However the CAD conversion rates in our young cohort remained low (0.007 % UCP patients converted to CAD) corroborating their low-risk for CAD. This coupled with low mortality in this group underscores the need to look beyond tier one outcome (survival) in young patients with recurrent chest pain. Some authors have proposed diagnostic algorithms to facilitate work ups and even cost saving strategies such as initiation of high dose gastric acid suppressive therapy after ruling out cardiac causes [8, 35]. We need more research to better quantify these causes and develop evidence-based guidelines for managing persistent chest pain that are value-based, patient centered and integrated towards a 'rule in' strategy [36]. Documenting the prevalence and cost of this condition is the first step in this direction.

### Limitations

Our study has several limitations. First, we used an administrative database that relied on ICD-9 codes and did not capture the granularity of diagnostic work ups. The findings are therefore subject to the accuracy and subjectivity of ICD code documentation as well as presumed adequacy of patient work ups. Further work is needed to determine the definitive diagnoses eventually given to these patients. Second, the costs cannot be generalized to all Veterans because the data were limited to those seeking VA care. However our cohort was young (75 % less than 50 years) and unlikely to have alternate insurance such as Medicare. Our results may then actually underestimate the rates of return visits. Third, it is possible that some patients were redeployed during the follow up period, however symptomatic patients with chest pain are unlikely to be deployed. Fourth, it is possible that coding errors occurred. However our findings from previous studies show good reliability [18]. Fourth, this VA cohort is young and unique that could affect the generalizability of our findings. However UCP is also common in younger

cohorts in patients largely free of CAD as reported by Fagring et al. from a population-based study [12]. It is also interesting to see that despite lower pretest probability of CAD, this young cohort incurred high costs of care. Fifth, we only used all cause-mortality in our outcomes and did not compare the reason of death. However, given the low mortality rates in this cohort, it may not influence the interpretation of our findings. Finally our study was based on physician diagnosis rather than patient-reports, and therefore likely represents and underestimate of the burden of disease [7].

### Conclusion

Unexplained chest pain is common and a frequent cause of recidivism in young Veterans without known CAD. With a projected annual cost of over \$300 billion, unexplained chest pain represents an unidentified source of major cost to the health system and warrants further investigation.

### Presentations

Abstract from this study has been accepted for presentation at the American Heart Association Scientific Session 2013 to be held in Dallas, TX.

### Additional file

**Additional file 1: ICD-9 Codes for CAD.**

### Abbreviations

CAD: Coronary artery disease; UCP: Unexplained chest pain; ACS: Acute coronary syndrome; VA: Veteran Affairs; aHR: Adjusted hazard ratio; aRR: Adjusted Rate ratio; PTSD: Post traumatic stress disorder; WWCS: Women Veteran Cohort Study; OEF: Operation Enduring Freedom; OIF: Operation Iraqi Freedom; OND: Operation New Dawn; DSS: Decision support system; ICD-9: International Classification of Diseases -9<sup>th</sup> edition; IQR: Inter-quartile range.

### Competing interests

The authors declare that they have no competing interests.

### Authors' contributions

All authors listed have contributed sufficiently to the project to be included as authors, and all those who are qualified to be authors are listed in the author byline. All authors have participated in the work and have reviewed and agree with the content of the article. All authors meet at least three authorship requirements as listed on icmje.org. BS had full access to all of the data in the study and takes responsibility for the integrity of the data and the accuracy of the data analysis. BS, JD, HB, DLL, CB, and SGH contributed to study concept and design. BS, CB and SGH were responsible for obtaining funding for the project. BS, HB, MS and CB were responsible for data acquisition. BS, JD, HB, and DLL analyzed the data and all authors contributed to interpretation of data. BS, JD, DLL, CB and SGH contributed to initial drafts as well as critical revisions of the manuscript. All authors read and approved the final manuscript.

### Acknowledgment

We are grateful to Earl Francis Cook Jr., Sc.D., for his thoughtful review of the manuscript.

### Funding/Support

Dr. Safdar's research was funded by a grant from the Health Services Research & Development Service of the Department of the Veteran Affairs entitled the Women Veteran Cohort Study (Grant # DHI 07-065; Pls: C. Brandt, S. Haskell). This publication was also made possible by the CTSA (Grant Number UL1 RR024139) from the National Center for Research Resources (NCRR), a component of the National Institutes of Health (NIH), and NIH roadmap for Medical Research.

### Role of the sponsor

None of the funders had a role in the design and conduct of the study; collection, management, analysis, and interpretation of the data; preparation, review, or approval of the manuscript; and decision to submit the manuscript for publication.

### Disclaimer

The views expressed in this article are those of the authors and do not necessarily reflect the position or policy of the Department of Veterans Affairs, NCRR or NIH.

### Author details

<sup>1</sup>Department of Emergency Medicine, 464 Congress Ave, New Haven, CT, USA. <sup>2</sup>VA Connecticut Healthcare System, 950 Campbell Ave, West Haven, CT, USA. <sup>3</sup>Yale Center for Analytical Sciences, 300 George Street, Suite 555, New Haven, CT, USA. <sup>4</sup>Penn State College of Medicine, A210, 600 Centerview Drive, Hershey, PA, USA. <sup>5</sup>Department of Internal Medicine, Yale School of Medicine, 333 Cedar St, New Haven, CT, USA.

Received: 16 February 2015 Accepted: 29 May 2015

Published online: 23 July 2015

### References

- Albert M. National Hospital Ambulatory Medical Care Survey: 2009 Emergency Department Summary Tables. Centers for Disease Control and Prevention;2009. [http://www.cdc.gov/nchs/data/ahcd/nhamcs\\_emergency/2009\\_ed\\_web\\_tables.pdf](http://www.cdc.gov/nchs/data/ahcd/nhamcs_emergency/2009_ed_web_tables.pdf).
- Kontos MC, Diercks DB, Kirk JD. Emergency department and office-based evaluation of patients with chest pain. *Mayo Clin Proc.* 2010;85(3):284–99.
- Udelson JE, Beshansky JR, Ballin DS, et al. Myocardial perfusion imaging for evaluation and triage of patients with suspected acute cardiac ischemia: a randomized controlled trial. *JAMA.* 2002;288(21):2693–700.
- Ruigomez A, Rodriguez LA, Wallander MA, Johansson S, Jones R. Chest pain in general practice: incidence, comorbidity and mortality. *Fam Pract.* 2006;23(2):167–74.
- Reis SE, Holubkov R, Conrad Smith AJ, et al. Coronary microvascular dysfunction is highly prevalent in women with chest pain in the absence of coronary artery disease: results from the NHLBI WISE study. *Am Heart J.* 2001;141(5):735–41.
- Fagring AJ, Gaston-Johansson F, Kjellgren KI, Welin C. Unexplained chest pain in relation to psychosocial factors and health-related quality of life in men and women. *Eur J Cardiovasc Nurs.* 2007;6(4):329–36.
- Eslick GD, Jones MP, Talley NJ. Non-cardiac chest pain: prevalence, risk factors, impact and consulting—a population-based study. *Aliment Pharmacol Ther.* 2003;17(9):1115–24.
- Yelland M, Cayley WE Jr, Vach W. An algorithm for the diagnosis and management of chest pain in primary care. *Med Clin North Am.* 2010;94(2):349–74.
- Levit, K, Stranges, et al. HCUP Facts and Figures 2006: Statistics on Hospital-based Care in the United States. Series Editor: Reuters, Thomson City: Rockville, MD. 2008.
- Nedkoff LJ, Briffa TG, Preen DB, et al. Age- and sex-specific trends in the incidence of hospitalized acute coronary syndromes in Western Australia. *Circ Cardiovasc Qual Outcomes.* 2011;4(5):557–64.
- Wier LM (Thomson Reuters) PATR, Maeda J (Thomson Reuters), Stranges E (Thomson Reuters), Ryan K (Thomson Reuters), Jagadish P (AHRQ), Collins Sharp B (AHRQ), Elixhauser A (AHRQ). HCUP Facts and Figures: Statistics on Hospital-based Care in the United States, 2009. In: Quality AHRQ, ed. Rockville, MD2011.
- Fagring AJ, Lappas G, Kjellgren KI, Welin C, Manhem K, Rosengren A. Twenty-year trends in incidence and 1-year mortality in Swedish patients hospitalised with non-AMI chest pain. Data from 1987–2006 from the Swedish hospital and death registries. *Heart.* 2010;96(13):1043–9.
- Burman RA, Zakariassen E, Hunskaar S. Management of chest pain: a prospective study from Norwegian out-of-hours primary care. *BMC Fam Pract.* 2014;15:51.
- MEMBERS WG, Lloyd-Jones D, Adams R, et al. Heart Disease and Stroke Statistics—2009 Update. *Circulation.* 2009;119(3):e21–181.
- Go AS, Mozaffarian D, Roger VL, et al. Heart disease and stroke statistics—2013 update: a report from the American Heart Association. *Circulation.* 2013;127(1):e6–245.
- Haskell SG, Mattocks K, Goulet JL, et al. The burden of illness in the first year home: do male and female VA users differ in health conditions and healthcare utilization. *Womens Health Issues.* 2011;21(1):92–7.
- Kessler CS, Bhandarkar S, Casey P, Tenner A. Predicting patient patterns in veterans administration emergency departments. *West J Emerg Med.* 2011;12(2):204–7.
- Goulet JL, Fultz SL, Rimland D, et al. Aging and infectious diseases: do patterns of comorbidity vary by HIV status, age, and HIV severity? *Clin Infect Dis.* 2007;45(12):1593–601.
- Goulet JL, Erdos J, Kancir S, et al. Measuring performance directly using the veterans health administration electronic medical record: a comparison with external peer review. *Med Care.* 2007;45(1):73–9.
- McGinnis KA, Brandt CA, Skanderson M, et al. Validating Smoking Data From the Veteran's Affairs Health Factors Dataset, an Electronic Data Source. *Nicotine Tob Res.* 2011;13(12):1233–9.
- WB N. Confidence Limits for Recurrence Data: Applied to Cost or Number of Product Repairs. *Technometrics.* 1995;37:147–157.
- Bosner S, Becker A, Haasenritter J, et al. Chest pain in primary care: epidemiology and pre-work-up probabilities. *Eur J Gen Pract.* 2009;15(3):141–6.
- Vashi AA, Fox JP, Carr BG, et al. Use of hospital-based acute care among patients recently discharged from the hospital. *JAMA.* 2013;309(4):364–71.
- Klinkman MS, Stevens D, Gorenflo DW. Episodes of care for chest pain: a preliminary report from MIRNET. Michigan Research Network. *J Fam Pract.* 1994;38(4):345–52.
- Dumville JC, MacPherson H, Griffith K, Miles JN, Lewin RJ. Non-cardiac chest pain: a retrospective cohort study of patients who attended a Rapid Access Chest Pain Clinic. *Fam Pract.* 2007;24(2):152–7.
- Litt HI, Gatsonis C, Snyder B, et al. CT angiography for safe discharge of patients with possible acute coronary syndromes. *N Engl J Med.* 2012;366(15):1393–403.
- Verdon F, Burnand B, Herzig L, Junod M, Pecoud A, Favrat B. Chest wall syndrome among primary care patients: a cohort study. *BMC Fam Pract.* 2007;8:51.
- Robertson N, Javed N, Samani NJ, Khunti K. Psychological morbidity and illness appraisals of patients with cardiac and non-cardiac chest pain attending a rapid access chest pain clinic: a longitudinal cohort study. *Heart.* 2008;94(3), e12.
- Webster R, Norman P, Goodacre S, Thompson AR, McEachan RR. Illness representations, psychological distress and non-cardiac chest pain in patients attending an emergency department. *Psychol Health.* 2014;29(11):1265–82.
- Safdar B, Foody JM, D'Onofrio G. Depression as Modifiable Coronary Risk factor in the Emergency Department Chest Pain Observation Unit. *Crit Pathw Cardiol.* 2010;9(2):82–7.
- Ockene IS, Shay MJ, Alpert JS, Weiner BH, Dalen JE. Unexplained chest pain in patients with normal coronary arteriograms: a follow-up study of functional status. *N Engl J Med.* 1980;303(22):1249–52.
- Medicare Provider Charge Data. 2013. <http://www.cms.gov/Research-Statistics-Data-and-Systems/Statistics-Trends-and-Reports/Medicare-Provider-Charge-Data/Physician-and-Other-Supplier.html>. Accessed May 14 2013.
- Total expenses and percent distribution for selected conditions by source of payment: United States, 2008. Medical Expenditure Panel Survey Household Component Data; 2008. [http://meps.ahrq.gov/mepsweb/data\\_stats/tables\\_compensia\\_hh\\_interactive.jsp?\\_SERVICE=MEPSocket0&\\_PROGRAM=MEPSGM.ITC.SAS&File=HC2Y2009&Table=HC2Y2009&5FNCNDXP&5FA&\\_Debug=](http://meps.ahrq.gov/mepsweb/data_stats/tables_compensia_hh_interactive.jsp?_SERVICE=MEPSocket0&_PROGRAM=MEPSGM.ITC.SAS&File=HC2Y2009&Table=HC2Y2009&5FNCNDXP&5FA&_Debug=). Accessed 2008.
- Pope JH, Aufderheide TP, Ruthazer R, et al. Missed diagnoses of acute cardiac ischemia in the emergency department. *N Engl J Med.* 2000;342(16):1163–70.
- Fass R, Fennerty MB, Ofman JJ, et al. The clinical and economic value of a short course of omeprazole in patients with noncardiac chest pain. *Gastroenterology.* 1998;115(1):42–9.
- Porter ME. What is value in health care? *N Engl J Med.* 2010;363(26):2477–81.