


CORRECTION

Open Access



Correction: Congenital coronary artery-left ventricular multiple micro-fistulas and hypertrophic cardiomyopathy: a case report and literature review

Yue Liu^{1,2,3}, Zhiyuan Wang⁴, Hong Zeng^{1,2,3}, Sibao Yang^{1,2,3} and Xiangdong Li^{1,2,3*} 

Correction to: BMC Cardiovascular Disorders (2022) 22:483
<https://doi.org/10.1186/s12872-022-02926-w>

Following the publication of the original article [1], the

Fig. 4 has been modified, and the same is shown below:
The original article has been corrected.

Author details

¹Cardiology Department, China-Japan Union Hospital of Jilin University, Changchun 130033, China. ²Jilin Provincial Key Laboratory for Genetic Diagnosis of Cardiovascular Disease, Changchun 130033, China. ³Jilin Provincial Cardiovascular Research Institute, 126 Xiantai Street, Changchun 130033, Jilin Province, China. ⁴Ultrasound Department, China-Japan Union Hospital of Jilin University, Changchun 130033, China.

Accepted: 15 November 2022

Published online: 30 November 2022

Reference

1. Liu Y, Wang Z, Zeng H, et al. Congenital coronary artery-left ventricular multiple micro-fistulas and hypertrophic cardiomyopathy: a case report and literature review. *BMC Cardiovasc Disord.* 2022;22:483. <https://doi.org/10.1186/s12872-022-02926-w>.

Publisher's Note

Springer Nature remains neutral with regard to jurisdictional claims in published maps and institutional affiliations.

The original article can be found online at <https://doi.org/10.1186/s12872-022-02926-w>.

*Correspondence: lxid870112@jlu.edu.cn

³ Jilin Provincial Cardiovascular Research Institute, 126 Xiantai Street, Changchun 130033, Jilin Province, China

Full list of author information is available at the end of the article



© The Author(s) 2022. **Open Access** This article is licensed under a Creative Commons Attribution 4.0 International License, which permits use, sharing, adaptation, distribution and reproduction in any medium or format, as long as you give appropriate credit to the original author(s) and the source, provide a link to the Creative Commons licence, and indicate if changes were made. The images or other third party material in this article are included in the article's Creative Commons licence, unless indicated otherwise in a credit line to the material. If material is not included in the article's Creative Commons licence and your intended use is not permitted by statutory regulation or exceeds the permitted use, you will need to obtain permission directly from the copyright holder. To view a copy of this licence, visit <http://creativecommons.org/licenses/by/4.0/>. The Creative Commons Public Domain Dedication waiver (<http://creativecommons.org/publicdomain/zero/1.0/>) applies to the data made available in this article, unless otherwise stated in a credit line to the data.

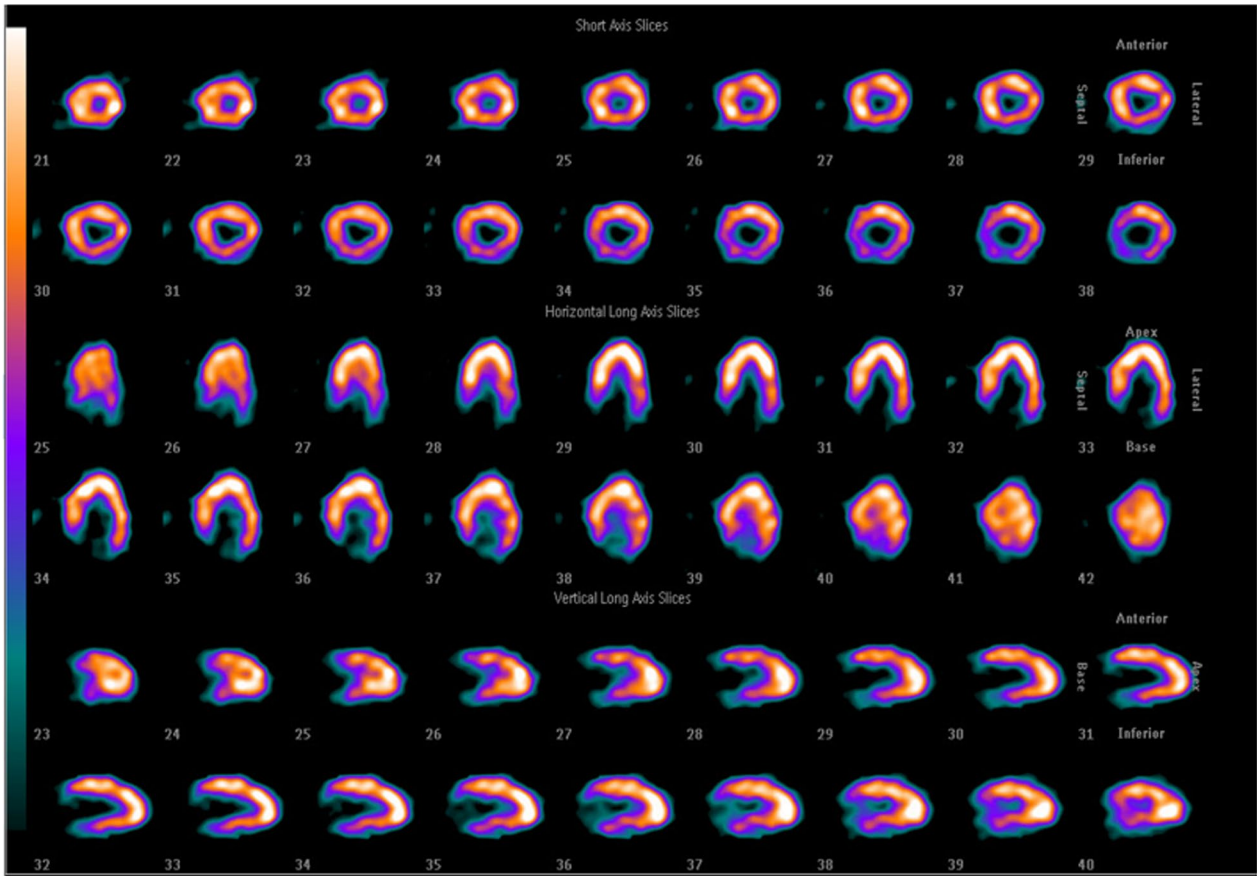


Fig. 4 ECT showed that uneven distribution of 99mTc-MIBI in the myocardium and perfusion defect in the apical myocardium