

CASE REPORT

Open Access



# Extreme ST-segment elevations in seemingly no significant angiographic coronary artery abnormalities: a case report

M. Piels<sup>1,2\*</sup> , T. Faes<sup>1</sup> and J. Vainer<sup>1</sup>

## Abstract

**Background:** Obstructive coronary artery disease is found in approximately 97% of patients presenting with ST-elevation myocardial infarction and 92% of patients with non ST-elevation myocardial infarction (Bailey KR, Welsh RC, Alemayehu W, Westerhout CM, Traboulsi D, Anderson T, et al. *Int J Cardiol* 264: 12–17, 2018). Recent studies showed that myocardial infarction without obstructive coronary atherosclerosis (MINOCA) is also associated with a long-term risk of adverse events (Bailey KR, Welsh RC, Alemayehu W, Westerhout CM, Traboulsi D, Anderson T, et al. *Int J Cardiol* 264: 12–17, 2018).. The following case illustrates that MINOCA may also be associated with short term adverse events (depending on the underlying mechanism).

**Case presentation:** A 49-year old Caucasian male with no significant medical history was referred to our cardiac emergency department with acute chest pain. The ambulance ECG showed extreme ST-segment elevation anterolateral ('tombstone sign'), which had resolved completely at arrival in the hospital. Coronary angiography showed no obstructive coronary artery disease. Conservative (medical) therapy was started and patient was discharged. Two days later he presented with recurrent cardiac ischemia with ventricular fibrillation. Coronary angiography showed no changes compared with earlier presentation. During admission to the ICU his clinical condition gradually deteriorated, eventually leading to his death. Post-mortem studies showed no significant atherosclerotic lesions. Massive myocardial infarction was found, probably caused by temporary occlusion of the left main coronary artery.

**Conclusions:** Several pathophysiological mechanisms are recognized in MINOCA, of which vasospasm is the most probable one in this case. MINOCA is associated with increased over-all mortality and risk of ventricular arrhythmias. Therefore, additional testing should be considered when there is no explanation for the mismatch between ST-elevations (STEMI) and (no significant) coronary abnormalities.

**Keywords:** MINOCA, STEMI, Tombstone ST elevation, Coronary spasm, Case report

## Background

Obstructive coronary artery disease is found in approximately 97% of patients presenting with ST-elevation myocardial infarction and 92% of patients with non ST-elevation myocardial infarction [1]. Recent studies showed that myocardial infarction without obstructive coronary atherosclerosis (MINOCA) is also associated with a long-term risk of adverse events [1]. The following case

illustrates that MINOCA may also be associated with short term adverse events and may warrant further patient investigation regarding the underlying mechanism.

## Case presentation

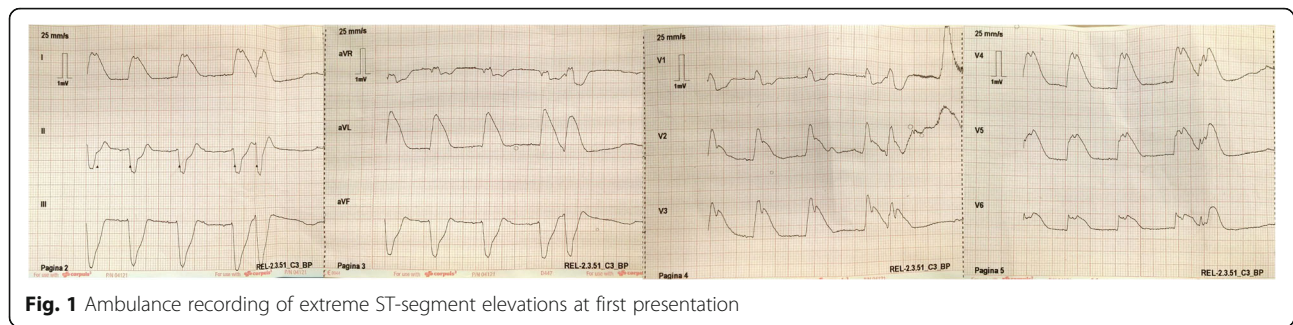
A 49-year old Caucasian male with no significant medical history and no prior complaints of chest pain (smoking was his only known cardiovascular risk factor) was referred to our cardiac emergency department with acute chest pain during exertion. The ambulance ECG showed extreme ST-segment elevation anterolateral ('tombstone elevations'), which had resolved completely at arrival in the hospital (Figs. 1 and 2).

\* Correspondence: [marc.piels@mumc.nl](mailto:marc.piels@mumc.nl)

<sup>1</sup>Maastricht University Medical Center (MUMC+), P. Debyeelaan 25, 6229HX, Maastricht, The Netherlands

<sup>2</sup>Gouverneur G. Ruijs de Beerenbroucklaan 36, 6123 AC, Holtum, The Netherlands



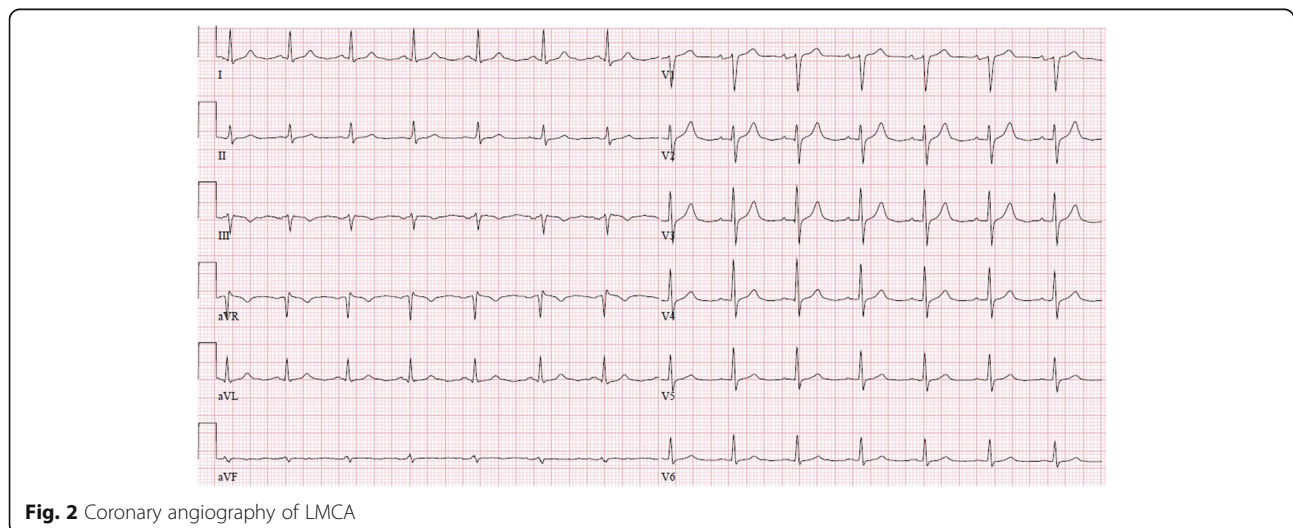


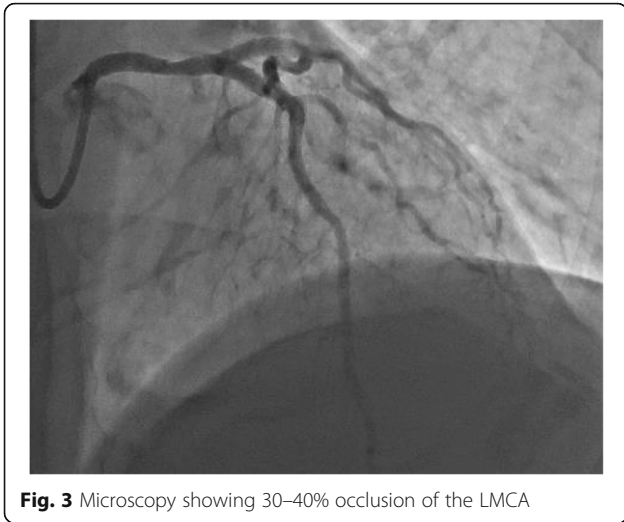
In the hospital the patient immediately went to the catheterization laboratory for an emergency coronary angiography, which showed no significant lesions. At the bifurcation between LMCA and LAD wall irregularities were visible, possibly indicating either a small dissection or a passed thrombus (Fig. 3). Dual antiplatelet therapy was continued afterwards. During the next two days the patient did not have any complaints and no arrhythmias occurred. Ultrasonography showed no regional wall motion abnormalities, LV ejection fraction of 50% and no significant valvular disease. Patient received dual antiplatelet therapy, statins and ACE-inhibition. A beta blocker was also started, but had to be stopped due to symptomatic bradycardia. The patient was discharged 3 days after presentation. The out-patient follow-up visit was scheduled within 2 weeks after discharge. Unfortunately after discharge the patient resumed his smoking habits and refused to take any medication.

Two days later the patient presented at the emergency department after reanimation because of collapse due to ventricular fibrillation. Time of delay from onset until arrival of the ambulance was approximately 8 min. The ambulance ECG once again showed marked ST-elevations, which had resolved completely at hospital arrival. At arrival patient also had complete recovery of spontaneous

circulation. An emergency coronary angiography was performed, which showed no changes compared to several days earlier and no clear cause of the VF. At first a conservative approach was chosen and the patient was admitted to the ICU. Intracoronary imaging (IVUS) of the LMCA was postponed awaiting neurological recovery.

After arriving at the ICU, the patient developed ventricular arrhythmias with loss of cardiac output. Attempts to restore output were not successful, which eventually led to implantation of veno-arterial extra corporal life support (ECLS). Repeated ultrasonography after placement of the ECLS showed worsening of the systolic LV-function (EF 10%), with only some wall movement in the RCA-fueled area. This was attributed to stunning post-reanimation and ECLS-implantation. During the next several days the systolic LV-function gradually improved to a point where the ECLS could be removed. In an attempt to prevent further ventricular arrhythmias and possible spasm, PCI of the angiographically not significant lesion of the LMCA was performed. Unfortunately, no neurological recovery occurred and the patient died 1 month later. The permission to perform an autopsy was granted (Table 1).





**Fig. 3** Microscopy showing 30–40% occlusion of the LMCA

**Post-mortem findings**

The fore mentioned case left us wondering: what caused this man without any significant angiographic coronary lesions to present with such dramatic clinical consequences? Did we miss a significant lesion, did he have coronary spasms or is there another explanation?

Macroscopically the coronary arteries were open and showed no significant sclerotic lesions. The stent placed in the LMCA seemed to be open as well. On the Lactate dehydrogenase macroreaction (LDH) the entire left ventricle wall showed discoloration, with exception of the posterior wall. This finding indicates scarring and atrophy of the septum, anterior and lateral wall, indicating a massive myocardial infarction after occlusion of the LMCA. As the stent was not occluded the infarction

**Table 1** Timeline

Days since admission	Time	Event
0	10:00	Presentation with STEMI
2		Discharge
4	08:35	Out of hospital cardiac arrest due to ventricular fibrillation
4	10:37	Emergency coronary angiography
4		Arrival on ICU: hemodynamically instable refractory ventricular tachycardia. Start extracorporeal life support
8		Stop extracorporeal life support
13		PCI LMCA – LAD
13–36		Long stay at ICU with clinical deterioration and no apparent neurological recovery
36	12:52	Patient died after treatment was stopped

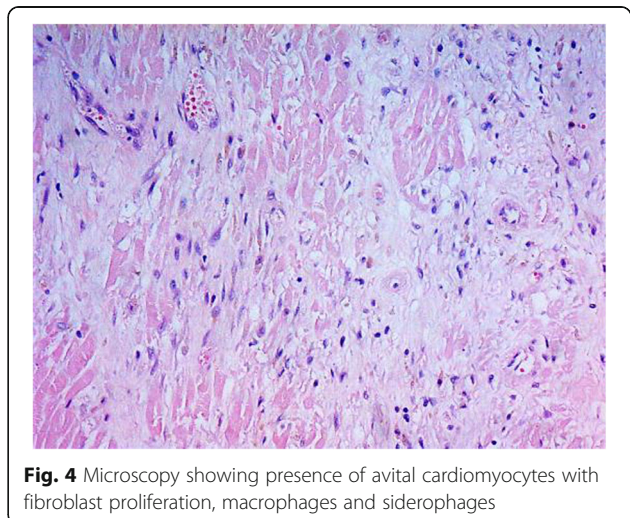
probably occurred beforehand and was most likely the cause of the ventricular fibrillation at presentation.

Microscopical examination of the heart showed extensive transmural infarction throughout the entire left ventricle, with avital cardiomyocytes, macrophages, siderophages, and fibroblast proliferation as a sign of starting fibrosis (Fig. 4). These findings are in agreement with a myocardial infarction which occurred several weeks ago (due to ischemia either during reanimation or before). The right ventricle only showed some focal ischemic changes with zones of vital myocardium. Detailed examination of the LMCA in the stented region showed a stable atheromatous plaque with 30–40% occlusion of the coronary artery and indentations in the wall, attributable to the stent (Fig. 5). The other coronary arteries, aorta and carotid arteries only showed minor atherosclerotic changes without significant occlusions.

**Discussion and conclusions**

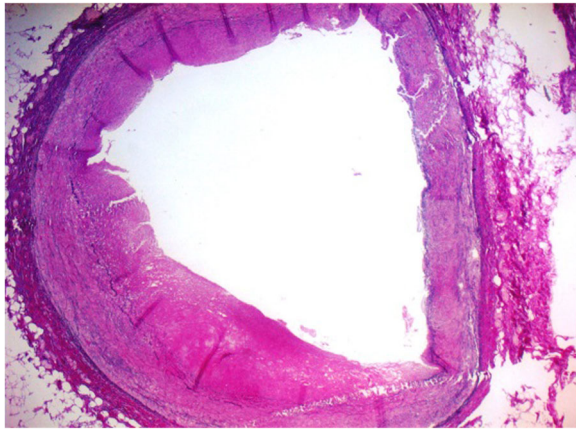
This case is an extreme example of MINOCA (Myocardial Infarction with No Obstructive Coronary Atherosclerosis). Post-mortem findings showed clear signs of atherosclerotic changes in the LMCA and extensive infarction, where no significant angiographic lesions were visible. There were no signs of myocarditis or other explanations found for the rapid deterioration of the patient. Several pathophysiological mechanisms are recognized in MINOCA [2], of which vasospasm is the most probable one in this case.

Coronary spasms might be an explanation for this extreme presentation, as showed by previous case reports showing large infarctions due to spasms of the LMCA [3, 4]. The extreme elevations in our case could well fit spasms of either the LMCA or of both LAD and RCx. Further functional testing (such as spasm provocation testing) might have revealed additional information



**Fig. 4** Microscopy showing presence of avital cardiomyocytes with fibroblast proliferation, macrophages and siderophages





**Fig. 5** In-hospital recording of ECG at first presentation after resolution of ST-segment elevations

earlier on in this case. These tests however are not (and should not be) standardly performed in every patient. In patients presenting with extreme ECG or biochemical abnormalities without clear angiographic abnormalities though, these tests could be considered more readily.

Rupture of an eccentric plaque might be another possible explanation for MINOCA, although post-mortem findings do not support this theory in our patient. While angiographically no significant abnormalities were seen, postmortem findings did show an occlusion of 30–40% of the LMCA after stenting.

While the majority of patients presenting with a myocardial infarction has significant coronary artery disease, a significant proportion of patients shows no significant coronary abnormalities (a prevalence of 8.8% in NSTEMI is reported [2] and approximately 3% in STEMI [5]). One study in patients with MINOCA showed an increased prevalence of ventricular arrhythmia of 13.8% during hospitalization [6], especially in patients presenting with ST-segment elevation and patient who had transmural late gadolinium enhancement on CMR. Furthermore, non-obstructive coronary artery disease is associated with increased overall 1-year mortality (though mostly driven by greater non cardiac mortality) [5].

In conclusion myocardial infarction without obstructive coronary atherosclerosis is associated with increased over-all mortality and risk of ventricular arrhythmias. Therefore, additional testing should be considered when there is no satisfying explanation for the mismatch between ST-elevations (STEMI) and (no significant) coronary abnormalities.

#### Abbreviations

ACE: Angiotensin converting enzyme; CMR: Cardiac magnetic resonance imaging; ECG: Electrocardiogram; ECLS: Extra corporal life support; EF: Ejection fraction; FFR: Fractional flow reserve; ICU: Intensive care unit; IFR: Instantaneous wave-free ratio; IVUS: Intravascular ultrasound; LAD: Left

anterior descending coronary artery; LDH: Lactate dehydrogenase; LMCA: Left main coronary artery; LV: Left ventricle; MINOCA: Myocardial infarction without obstructive coronary atherosclerosis; NSTEMI: Non ST-elevation myocardial infarction; PCI: Percutaneous coronary intervention; RCA: Right coronary artery; STEMI: ST-elevation myocardial infarction; VF: Ventricular fibrillation

#### Acknowledgements

Not applicable.

#### Funding

Not applicable. Reduced publication costs due to BMC membership of Maastricht University Medical Center.

#### Availability of data and materials

Not applicable.

#### Author's contributions

MP main author. TF pathology examination and contributed in writing the post-mortem findings. JV proof reading and manuscript correction. All authors have read and approved the final version of the manuscript.

#### Ethics approval and consent to participate

Not applicable.

#### Consent for publication

written informed consent for publication of their clinical details and/or clinical images was obtained from the relative of the patient. A copy of the consent form is available for review by the Editor of this journal.

#### Competing interests

The authors declare that they have no competing interests.

#### Publisher's Note

Springer Nature remains neutral with regard to jurisdictional claims in published maps and institutional affiliations.

Received: 17 August 2018 Accepted: 23 January 2019

Published online: 29 January 2019

#### References

- Bainey KR, Welsh RC, Alemayehu W, Westerhout CM, Traboulsi D, Anderson T, et al. Population-level incidence and outcomes of myocardial infarction with non-obstructive coronary arteries (MINOCA): insights from the Alberta contemporary acute coronary syndrome patients invasive treatment strategies (COAPT) study. *Int J Cardiol.* 2018;264:12–7.
- Niccoli G, Scalone G, Crea F. Acute myocardial infarction with no obstructive coronary atherosclerosis: mechanisms and management. *Eur Heart J.* 2015; 36(8):475–81.
- Lee CH, Seow SC, Lim YT. Lethal presentations of coronary artery spasm after an event-free period of six years following initial diagnosis. *J Invasive Cardiol.* 2008;20(1):E30–2.
- Jung KY, Kang TS. A case of acute myocardial infarction with ST-segment elevation in a lead augmented right vector caused by a left main coronary artery vasospasm. *Korean Circ J.* 2012;42(1):50–3.
- Planer D, Mehran R, Ohman EM, White HD, Newman JD, Xu K, et al. Prognosis of patients with non-ST-segment-elevation myocardial infarction and nonobstructive coronary artery disease: propensity-matched analysis from the acute catheterisation and urgent intervention trage strategy trial. *Circ Cardiovasc Interv.* 2014;7(3):285–93.
- Bière L, Niro M, Pouliquen H, Gourraud JB, Prunier F, Furber A, et al. Risk of ventricular arrhythmia in patients with myocardial infarction and non-obstructive coronary arteries and normal ejection fraction. *World J Cardiol.* 2017;9(3):268–76.